

統計年報



STATISTICAL TABLES

2003

香港港口

PORT OF HONG KONG

中華人民共和國
香港特別行政區
海事處

Marine Department
Hong Kong Special Administrative Region
People's Republic of China

本處使命是促進卓越的海事服務
Our Mission is to Promote Excellence in Marine Services

香 港 港 口
PORT OF HONG KONG

統 計 年 報 2003
STATISTICAL TABLES

有關本刊物的查詢，請聯絡：

海事處 策劃及發展協調部 統計組

地址：中國香港中環統一碼頭道 38 號海港政府大樓 23 樓 2307 室

電話：(852) 2852 3661 圖文傳真：(852) 2542 4638

電子郵遞：st-sec@mardep.gov.hk

Enquiries about this publication can be directed to :

Statistics Section

Planning & Development Branch

Marine Department

Address: Room 2307, 23/F, Harbour Building,

38 Pier Road, Central , Hong Kong, China.

Tel. No. : (852) 2852 3661 Fax. No. : (852) 2542 4638

E-mail : st-sec@mardep.gov.hk

政府海事處網頁 Home Page of the Marine Department

<http://www.mardep.gov.hk/>

目錄 CONTENTS

如欲進入統計表 / 附錄，請按下有關的藍色項目

To view the statistical tables/appendices, please click
the item in blue

頁數
Page No.

註釋

EXPLANATORY NOTES

iv - v

摘要

SUMMARY

1999 至 2003 年 主要港口統計數字連同每年增長率

Principal Port Statistics for 1999 - 2003 and Annual Growth Rates

vi

第一部 -

港口活動

PART I -

Port Activities

抵港 / 離港的船次

Vessel Arrivals/Departures

表 1 . 2003 年 按主要停泊地點分析抵港遠洋輪船的船次	
TABLE 1 . Ocean Vessel Arrivals by Main Berthing Location, 2003	1
表 2 . 2003 年 按主要停泊地點分析離港遠洋輪船的船次	
TABLE 2 . Ocean Vessel Departures by Main Berthing Location, 2003	1
表 3 . 2003 年 按船舶類型分析抵港船隻的船次	
TABLE 3 . Vessel Arrivals by Ship Type, 2003	2
表 4 . 2003 年 按船旗分析抵港船隻的船次	
TABLE 4 . Vessel Arrivals by Flag, 2003	3 - 4
表 5 . 2003 年 按船旗分析曾停靠香港的船隻數目和淨註冊噸位	
TABLE 5 . Number and NRT of Vessels Calling Hong Kong by Flag, 2003	5 - 6
表 6 . 2003 年 按船舶類型分析離港船隻的平均在港停留時間	
TABLE 6 . Average Time in Port for Vessels Departing Hong Kong by Ship Type, 2003	7
表 7 . 2003 年 靠泊貨櫃碼頭的遠洋輪船統計資料	
TABLE 7 . Statistics on Ocean Vessels Calling Container Terminals, 2003	8
表 8 . 2003 年 按夏季吃水分析抵港遠洋輪船的船次	
TABLE 8 . Ocean Vessel Arrivals by Summer Draft, 2003	9
表 9 . 2003 年 按船隻長度分析抵港遠洋輪船的船次	
TABLE 9 . Ocean Vessel Arrivals by Vessel Length, 2003	9
表 10 . 2003 年 按主要來港原因分析抵港遠洋輪船的船次	
TABLE 10 . Ocean Vessel Arrivals by Main Reason of Call, 2003	10
表 11 . 2003 年 跨境客運碼頭的抵港及離港統計資料	
TABLE 11 . Statistics on Vessel Arrivals and Departures at Cross-Boundary Ferry Terminals, 2003	11 - 12

旅客吞吐量

Passenger Throughput

表 12 . 按跨境客運碼頭分析旅客吞吐量	
TABLE 12 . Passenger Throughput by Cross-Boundary Ferry Terminals	13
表 13 . 2003 年跨境客運碼頭的抵港及離港旅客人次	
TABLE 13 . Passenger Arrivals and Departures by Cross-Boundary Ferry Terminals, 2003	14 - 16

貨櫃 / 貨物吞吐量

Container/Cargo Throughput

表 14 . 2003 年 按主要貨物裝卸地點分析貨櫃吞吐量	
TABLE 14 . Container Throughput by Main Cargo Handling Location, 2003	17
表 15 . 2003 年 按貨櫃碼頭以外的主要貨物裝卸地點分析裝卸的貨櫃	
TABLE 15 . Containers Discharged/Loaded at Main Cargo Handling Locations Other than Container Terminals, 2003	18

第二部 - 港口服務及管理
PART II - Port Services and Control

表 16 . 海港繫泊浮泡統計資料	
TABLE 16 . Harbour Mooring Buoys Statistics	19
表 17 . 2003 年 按分布地點分析香港私用繫泡數目	
TABLE 17 . Number of Private Moorings Laid in Hong Kong by Location, 2003	20 - 21
表 18 . 垃圾收集、油污和檢控個案統計資料	
TABLE 18 . Refuse Collection, Oil Pollution and Prosecution Statistics	22
表 19 . 香港持牌船隻統計資料	
TABLE 19 . Statistics on Hong Kong Licensed Vessels	23
表 20 . 2003 年 按噸位等級分析香港持牌船隻	
TABLE 20 . Hong Kong Licensed Vessels by Tonnage Classification, 2003	24
表 21 . 用作裝卸貨物和海港工程的持牌船隻 (屬第 II 類持牌船隻)	
TABLE 21 . Licences on Cargo Working and Harbour Engineering Crafts (i.e. Class II Vessel Licences)	25

	<u>頁數</u> Page No.
第三部 - 船舶服務 PART III - Shipping Services	
表 22 . 船舶安全監督統計資料 TABLE 22 . Ship Safety Statistics	26 – 28
表 23 . 本地船舶安全統計資料 TABLE 23 . Local Vessels Safety Statistics	29 – 34
表 24 . 海員發證、註冊和僱用統計資料 TABLE 24 . Seafarers' Certification, Registration and Employment Statistics	35 – 39
表 25 . 香港註冊船舶統計資料 TABLE 25 . Statistics on Ships Registered in Hong Kong	40
表 26 . 政府船隊統計資料 TABLE 26 . Government Fleet Statistics	41 – 42
第四部 - 附錄 PART IV - Appendices	
A . 海事處組織架構圖 Marine Department Organization Chart	A1
B . 2003 年 12 月 31 日 海事處編制和實際員額 Marine Department Establishment and Strength as at 31.12.2003	A2 - A5
C . 2003 年海事處訓練組課程 Training Courses Conducted by Training Section, Marine Department in 2003	A6 - A7
D . 2003 年 海事處訪客 Visitors to the Marine Department, 2003	A8
E . 2003 年 新訂海事法例 New Maritime Legislation, 2003	A9
F . 2003 年 在香港註冊的船舶 Ships Registered in Hong Kong, 2003	A10 - A17
G . 2003 年 終止在香港註冊的船舶 Ships De-registered in Hong Kong, 2003	A18 - A21
H . 2003 年 輔航設備 Aids to Navigation, 2003	A22 - A32

註釋

一般

1. 船隻統計數字計算至最接近的十位，而淨註冊噸位、貨物和貨櫃吞吐量是計算至最接近的千位。由於進位關係，因此本報告中所列的個別數字之和可能不等於其總數。變動百分率和比重百分率皆以未經進位的數字計出。
2. 除非另有指明，括號內的數字指與前一年同期比較的變動百分率。
3. 一些常用的字詞、簡寫如下：
NRT = 淨註冊噸位
TEU = 二十呎標準貨櫃單位

資料來源

4. 船隻進出口統計資料乃根據船公司或代理人向海事處申報船舶出／入口資料時所遞交的申報表編製而成。(摘要、表一至十)
5. 河運方面的貨運統計資料過去是由港口及航運局編製。由 1998 年開始，海運和河運貨運統計資料皆由政府統計處根據貨物艙單托運資料抽樣編製而成。(摘要)
6. 1998 年以前，經由遠洋輪船在貨櫃碼頭裝運貨櫃的統計資料，由碼頭經營者直接提供，而經由遠洋輪船在其他地點裝運的貨櫃數字，則根據海事處所收到的船隻一般事項申報表編製而成。至於經由內河船隻裝運貨櫃的統計資料，則主要來自河運貨物艙單。(摘要、表十四和十五)
7. 1998 年起，經由遠洋輪船在貨櫃碼頭裝運的載貨貨櫃統計資料不再為碼頭經營者所提供，而改由政府統計處根據貨物艙單編製。現時，貨櫃吞吐量統計資料，除了經遠洋輪船處理的空貨櫃數據以外，皆由政府統計處編製。(摘要、表十四和十五)
8. 1999 年 10 月開始，有關遠洋輪船的主要貨物裝卸區和主要停泊地點，資料取自海事處船舶交通管理系統所保存的船隻活動報告。(表一至二、表七、表十四和十五)
9. 1993 年開始，遠洋輪船和內河船隻的定義已作修改。新定義是視乎其停靠港口是否在內河航限範圍內。(摘要、表一至十一、表十四和十五)

EXPLANATORY NOTES

General

1. Statistics on the number of vessel are rounded to the nearest ten, while those on net register tonnage, cargo and container throughput are rounded to the nearest thousand. Therefore, figures shown in the tables may not add up to the respective totals due to rounding. Percentage changes and percentage shares are calculated from unrounded figures.
2. Unless otherwise specified, figures in bracket are percentage changes over the same period in the preceding year.
3. Some common terms/abbreviations used are:
NRT = Net Register Tonnage
TEU = Twenty-foot Equivalent Unit

Data Sources

4. Vessel statistics are based on the declaration forms submitted by shipping companies/agents to Marine Department for declaring entry/exit. **(Summary Table, Tables 1 - 10)**
5. Cargo statistics in respect of river trade used to be compiled by the Hong Kong Port and Maritime Board. As from 1998, both seaborne and river cargo statistics are compiled by the Census and Statistics Department (C&SD) based on a sample of consignments on cargo manifests. **(Summary Table)**
6. Before 1998, statistics on container throughput handled by ocean vessels at Container Terminals were directly obtained from the terminal operators, while those handled at other locations were compiled based on the General Declaration Forms submitted to Marine Department. For statistics on container throughput by river vessels, they were principally based on river cargo manifests. **(Summary Table, Tables 14 and 15)**
7. As from 1998, statistics on laden containers handled by ocean vessels at Container Terminals are no longer based on the operators' returns, but compiled by C&SD based on cargo manifests instead. All container throughput statistics, except empty containers handled by ocean vessels, are now compiled by C&SD. **(Summary Table, Tables 14 and 15)**
8. Starting from October 1999, information on the main cargo handling location and main berthing location in respect of ocean vessels are extracted from the trip activity report kept in the Marine Department's Vessel Traffic Management System. **(Tables 1 - 2, 7, 14 and 15)**
9. Starting from 1993, ocean vessels and river vessels have been redefined according to whether or not their ports of call are beyond the river trade limits. **(Summary Table, Tables 1 - 11, 14 and 15)**

資料定義

10. 根據《船舶及港口管制條例》(第 313 章)所訂，內河船隻是指進出香港與內河航限內的港口之間的船隻。(摘要、表一至十一、表十四和十五)
11. 船隻在進入香港水域後可能停泊多過一個停泊地點。若船隻來港的主要原因是裝卸貨物，則主要的貨物裝卸地點和主要的停泊地點均為最昂貴的地點，當中以貨櫃碼頭居首位，隨後是泊位和倉庫碼頭、公眾貨物裝卸區、浮泡和碇泊處。若船隻來港的主要原因不是裝卸貨物，主要停泊地點為停留時間最長的地點。(表一至二、表七、表十四和十五)

資料限制

12. 遠洋客船數字包括在內河航限以外水域行駛的遊樂船隻。但是，有些代理人並無申報這些船隻的淨註冊噸位資料給海事處，導致遠洋客船和遠洋輪船的淨註冊噸位數字在某程度上也許低於實際數字。(摘要、表一至二、表四和五)
13. 1999 年以前，內河貨船統計資料包括一些在內河航限內行駛及有通知海事處的本地持牌遊樂船隻和漁船。由於這個數目微不足道，自 1999 年起，這些船隻類別不再納入內河船隻統計資料內。(摘要、表三至六)
14. 內河客船的抵港次數實際指船隻停泊於港澳客運碼頭、中國客運碼頭和海天客運碼頭的次數。(摘要、表三至五和十一)
抵港次數與停泊這三個碼頭的次數或許不同，原因如下：
 - (i) 船隻可能同一次航程中停泊多於一個客運碼頭；或
 - (ii) 船隻在停泊碼頭前或離開碼頭後，其航道可能未超越香港水域範圍。

策劃及發展協調部

統計組

Data Definitions

10. In accordance with the Shipping and Port Control Ordinance, Cap. 313, Laws of Hong Kong, river vessels refer to those travelling between Hong Kong and ports that are within the river trade limits. (Summary Table, Tables 1 - 11, 14 and 15)
11. A vessel may berth at more than one locations after entering into the Hong Kong waters boundary. If the main reason of call of the vessel is for loading/discharging cargo, both the main cargo handling location and the main berthing location will be the most costly location, with Container Terminals ranking first, followed by Berths and Wharves, Public Cargo Working Areas, Buoys and Anchorages. If the main reason of call is not for loading/discharging cargo, the main berthing location will be the one with the longest stay. (Tables 1 - 2, 7, 14 and 15)

Data Limitations

12. The number of ocean passenger vessels includes pleasure vessels plying beyond the river trade limits. However, as some of them do not report NRT data to Marine Department, the NRT total for ocean passenger vessels and ocean vessels as a whole may be under-estimated to a certain extent. (Summary Table, Tables 1 - 2, 4 and 5)
13. Before 1999, river cargo vessel statistics included some locally licensed pleasure vessels and fishing vessels known to be plying within the river trade limits. As the number is insignificant, river vessel statistics do not cover these categories of vessels as from 1999. (Summary Table, Tables 3 - 6)
14. The figures on arrivals of river passenger vessels in fact refer to the number of berthings at the Macau Ferry Terminal, the China Ferry Terminal and the SkyPier (Summary Table, Tables 3 - 5 and 11)
The number of berthings at these 3 terminals may differ from the number of arrivals because:
 - (i) a ship may berth at more than one terminals in a single trip; or
 - (ii) a ship may not have crossed the Hong Kong waters boundary right before or after a berthing.

Statistics Section,

Planning and Development Branch

摘要
SUMAMRY

1999 至 2003 年主要港口統計數字連同每年增長率
Principal Port Statistics for 1999 – 2003 and Annual Growth Rates

項目 Item	1999	2000	2001	2002	2003	每年增長率	
						Annual Growth Rates	
						2002-2003	1998-2003
1. 抵港、離港船次 Number of Vessel Arrivals and Departures	425 710	433 300	429 640	437 020	436 100	-0.2%	(Average) -1.2%
(a) 遠洋輪船 Ocean Vessel	75 260	74 830	74 280	70 530	70 910	+0.5%	-3.2%
貨船 - 抵港 Cargo Vessel - Arrivals	35 140	34 900	34 650	32 830	32 780	-0.2%	-3.2%
- 離港 - Departures	35 170	34 340	34 180	32 110	32 110	§	-3.7%
客船 - 抵港 Passenger Vessel - Arrivals	2 430	2 780	2 700	2 790	3 010	+7.8%	-0.9%
- 離港 - Departures	2 510	2 810	2 750	2 790	3 010	+7.8%	-1.0%
(b) 內河船隻 River Vessel	350 460	358 470	355 360	366 490	365 190	-0.4%	-0.7%
貨船 - 抵港 Cargo Vessel - Arrivals	115 330	119 180	116 190	119 520	119 480	§	-0.8%
- 離港 - Departures	115 270	119 610	116 730	120 280	120 120	-0.1%	-0.7%
客船 - 抵港 Passenger Vessel - Arrivals	59 930	59 810	61 200	63 340	62 790	-0.9%	-0.7%
- 離港 - Departures	59 930	59 880	61 240	63 340	62 800	-0.9%	-0.7%
2. 抵港、離港船隻的淨註冊噸位(千噸) N.R.T. of Vessel Arrivals and Departures ('000 tons)	534 674	601 128	680 190	744 989	772 515	+3.7%	+8.1%
(a) 遠洋輪船 Ocean Vessel	430 630	484 675	547 226	583 616	591 185	+1.3%	+7.3%
(b) 內河船隻 River Vessel	104 044	116 453	132 964	161 373	181 330	+12.4%	+11.1%
3. 貨櫃吞吐量(千個標準貨櫃單位) Container Throughput ('000 TEUs)	16 211	18 098	17 826	19 144	20 449	+6.8%	+7.0%
(a) 貨櫃碼頭 Container Terminals	10 295	11 603	11 285	11 892	12 070	+1.5%	+4.8%
(b) 貨櫃碼頭以外 Other than Container Terminals							
遠洋 Ocean	2 838	3 033	3 011	3 326	3 904	+17.4%	+8.1%
內河 River	3 077	3 462	3 531	3 926	4 475	+14.0%	+13.4%
4. 貨物吞吐量(千公噸) Cargo Throughput ('000 tonnes)	168 838	174 643	178 210	192 510	207 612	+7.8%	+4.4%
(a) 海運 Seaborne	128 222	130 937	130 676	138 301	148 618	+7.5%	+3.1%
(b) 河運 River	40 616	43 706	47 534	54 210	58 994	+8.8%	+8.3%
5. 遠洋船所裝卸的煤和石油產品(千公噸) Coal and Petroleum Products Loaded and Discharged by Ocean Vessels ('000 tonnes)	23 837	19 540	21 186	22 159	23 916	+7.9%	-3.7%

註釋： §在±0.05%之內

Notes: §Within ±0.05%

統計表
Statistical
Tables

表 1
TABLE 1

2003 年 按主要停泊地點分析抵港遠洋輪船的船次
Ocean Vessel Arrivals by Main Berthing Location, 2003

主要停泊地點 Main Berthing Location	主要船隻類別 Main Category								總計 Total			
	貨船 Cargo Vessels				客船 Passenger Vessels							
	抵港船次 No. of Vessel Arrivals		淨註冊噸位 (千噸) NRT ('000)		抵港船次 No. of Vessel Arrivals		淨註冊噸位 (千噸) NRT ('000)		抵港船次 No. of Vessel Arrivals		淨註冊噸位 (千噸) NRT ('000)	
	%		%		%		%		%		%	
貨櫃碼頭 Container Terminals	9 790	(+0.8)	176 407	(+7.9)	-	(-)	-	(-)	9 790	(+0.8)	176 407	(+7.9)
碇泊處 Anchorages	13 390	(-2.4)	72 124	(-10.5)	100	(+8.5)	14	(-46.3)	13 490	(-2.3)	72 138	(-10.6)
浮泡 Buoys	1 010	(-32.2)	4 743	(-33.8)	1 400	(-0.3)	6 116	(+0.5)	2 400	(-16.7)	10 859	(-18.0)
泊位和倉庫碼頭 Berths and Wharves	8 600	(+8.5)	21 120	(+30.2)	1 510	(+16.5)	19 989	(-8.1)	10 110	(+9.6)	41 109	(+8.3)
總計 Total	32 780	(-0.2)	274 395	(+2.6)	3 010	(+7.8)	26 119	(-6.3)	35 790	(+0.5)	300 514	(+1.8)

表 2
TABLE 2

2003 年 按主要停泊地點分析離港遠洋輪船的船次
Ocean Vessel Departures by Main Berthing Location, 2003

主要停泊地點 Main Berthing Location	主要船隻類別 Main Category								總計 Total			
	貨船 Cargo Vessels				客船 Passenger Vessels							
	離港船次 No. of Vessel Departures		淨註冊噸位 (千噸) NRT ('000)		離港船次 No. of Vessel Departures		淨註冊噸位 (千噸) NRT ('000)		離港船次 No. of Vessel Departures		淨註冊噸位 (千噸) NRT ('000)	
	%		%		%		%		%		%	
貨櫃碼頭 Container Terminals	9 930	(+2.9)	180 627	(+8.6)	-	(-)	-	(-)	9 930	(+2.9)	180 627	(+8.6)
碇泊處 Anchorages	14 150	(-2.6)	61 669	(-15.3)	150	(+36.3)	22	(+29.1)	14 300	(-2.3)	61 690	(-15.3)
浮泡 Buoys	960	(-33.2)	4 560	(-34.9)	1 400	(-0.2)	6 110	(+0.5)	2 350	(-16.9)	10 671	(-18.4)
泊位和倉庫碼頭 Berths and Wharves	7 080	(+8.7)	18 082	(+25.9)	1 460	(+14.1)	19 601	(-9.5)	8 540	(+9.6)	37 683	(+4.6)
總計 Total	32 110	(§)	264 938	(+1.7)	3 010	(+7.8)	25 733	(-7.3)	35 120	(+0.6)	290 671	(+0.8)

註釋 : () % 與去年比較

Notes : () % changes over the preceding year

- 不適用

- Not applicable

§在±0.05%之內

§Within ±0.05%

表 3
TABLE 3

2003 年 按船舶類型分析抵港船隻的船次
Vessel Arrivals by Ship Type, 2003

船舶類型 Ship Type	遠洋輪船 Ocean Vessels		內河船隻 River Vessels		總計 Total	
	抵港船次 No. of Vessel Arrivals	比重百分率 Percentage Share	抵港船次 No. of Vessel Arrivals	比重百分率 Percentage Share	抵港船次 No. of Vessel Arrivals	比重百分率 Percentage Share
	(%)		(%)		(%)	
化學品運載船 Chemical Carrier/Tanker	340 (-2.6)	0.9%	480 (-26.0)	0.3%	820 (-17.9)	0.4%
普通貨船 Conventional Cargo Vessel	5 860 (-15.6)	16.4%	32 440 (-34.0)	17.8%	38 300 (-31.7)	17.6%
郵船 / 渡輪 ⁺ Cruise/Ferry ⁺	2 910 (+7.8)	8.1%	62 790 (-0.9)	34.4%	65 700 (-0.5)	30.1%
散裝乾貨船 Dry Bulk Carrier	1 110 (+23.8)	3.1%	810 (+121.9)	0.4%	1 920 (+52.2)	0.9%
漁船 / 魚類加工船 Fishing/Fish Processing Vessel	390 (+12.9)	1.1%	N.A.	N.A.	N.A.	N.A.
全槽格式貨櫃船 Fully Cellular Container Vessel	22 340 (+17.4)	62.4%	55 350 (+51.8)	30.4%	77 690 (+40.0)	35.6%
液化氣體運載船 Gas Carrier/Tanker	360 (+0.6)	1.0%	50 (-23.1)	@	410 (-3.1)	0.2%
駁船 / 躉船 / 貨艇 [#] Lighter/Barge/Cargo Junk [#]	100 (-95.8)	0.3%	17 430 (-9.3)	9.6%	17 530 (-18.5)	8.0%
油輪 Oil Tanker	1 390 (+0.4)	3.9%	1 310 (-12.0)	0.7%	2 700 (-6.0)	1.2%
遊樂船隻 Pleasure Vessel	100 (+8.8)	0.3%	N.A.	N.A.	N.A.	N.A.
滾裝船 Roll On/Roll Off	380 (+5.9)	1.1%	* (+100.0)	@	380 (+6.4)	0.2%
半貨櫃船 Semi-container Vessel	270 (-50.1)	0.8%	690 (-48.0)	0.4%	960 (-48.6)	0.4%
拖船 Tug	160 (-37.1)	0.4%	10 770 (+1.2)	5.9%	10 930 (+0.3)	5.0%
其他 Others	90 (21.4)	0.3%	140 (-17.0)	0.1%	230 (-18.8)	0.1%
總計 Total	35 790 (+0.5)	100.0%	182 270 (-0.3)	100.0%	218 050 (-0.2)	100.0%

註釋： * 少於 5 @ 少於 0.05% () % 與去年比較 N.A. 沒有數字

+ 數字已包括於二零零三年開始? 用之海天客運碼頭的統計。

二零零三年遠洋"駁船/躉船/貨艇"的抵港數字大減，由於大嶼山竹篙灣填海工程須在內河航限範圍以外地方挖取海沙，有關挖取工程已於 2002 年 6 月完成。

Notes : * Less than 5 @ Less than 0.05% () % change over preceding year N.A. Not available

+ The figures have included the statistics for SkyPier which came into operation in 2003.

The substantial drop in arrivals of "Lighter/Barge/Cargo Junk" in 2003 is due to completion in June 2002 of the dredging of marine sand outside the river trade limits in connection with the reclamation in Penny's Bay, Lantau Island.

表 4
TABLE 4

2003 年按船旗分析抵港船隻的船次
Vessel Arrivals by Flag, 2003

船旗 Flag	遠洋輪船 Ocean Vessels		內河船隻 River Vessels		總計 Total	
	抵港船次 No. of Vessel Arrivals	淨註冊噸位 (千噸) NRT ('000)	抵港船次 No. of Vessel Arrivals	淨註冊噸位 (千噸) NRT ('000)	抵港船次 No. of Vessel Arrivals	淨註冊噸位 (千噸) NRT ('000)
	(%)	(%)	(%)	(%)	(%)	(%)
安提瓜和巴布達 Antigua and Barbuda	740 (+14.7)	7 040 (+18.3)	30 (+40.9)	386 (+72.1)	770 (+15.5)	7 425 (+20.2)
巴哈馬 Bahamas	1 030 (-10.9)	7 787 (-3.2)	20 (+6.3)	222 (+47.1)	1 050 (-10.7)	8 009 (-2.3)
伯利茲 Belize	300 (+97.4)	382 (+86.8)	50 (+22.5)	65 (+54.0)	350 (+81.8)	447 (+81.2)
中國 China	10 830 (+9.7)	11 962 (+48.2)	120 670 (-1.4)	44 031 (+2.5)	131 500 (-0.5)	55 993 (+9.7)
塞浦路斯 Cyprus	720 (+2.1)	7 161 (-1.6)	30 (-34.2)	290 (-31.0)	750 (+0.3)	7 450 (-3.2)
丹麥 Denmark	320 (+26.2)	13 166 (+24.9)	* (-20.0)	29 (-81.4)	330 (+25.3)	13 196 (+23.3)
德國 Germany F R	680 (-3.1)	16 130 (+15.8)	70 (+77.5)	1 761 (+77.5)	750 (+1.2)	17 891 (+19.9)
希臘 Greece	250 (+3.3)	6 160 (+1.6)	10 (-7.7)	254 (-6.8)	260 (+2.7)	6 413 (+1.3)
中國香港 Hong Kong, China	1 460 (-57.9)	13 233 (-61.6)	59 540 (+1.3)	21 573 (+10.4)	61 000 (-2.0)	34 806 (-35.6)
日本 Japan	130 (+7.8)	2 006 (+6.1)	* (0)	18 (0)	130 (+8.6)	2 023 (+7.1)
大韓民國 Korea R	660 (-2.8)	3 893 (-10.0)	120 (+24.0)	338 (+30.0)	780 (+0.5)	4 231 (-7.7)
利比里亞 Liberia	2 140 (+9.8)	34 220 (+12.1)	140 (+37.1)	2 064 (+52.6)	2 280 (+11.2)	36 285 (+13.9)
馬來西亞 Malaysia	460 (+46.8)	3 024 (+20.6)	20 (+66.7)	143 (+115.6)	480 (+47.4)	3 167 (+23.1)
馬耳他 Malta	370 (-9.7)	3 614 (-14.6)	10 (-55.6)	93 (-68.7)	380 (-11.6)	3 707 (-18.1)
荷蘭 Netherlands	160 (+27.3)	3 748 (-0.9)	* (-33.3)	33 (-14.4)	170 (+26.0)	3 781 (-1.1)
挪威 Norway	80 (-32.8)	855 (-34.0)	* (0)	12 (-19.1)	80 (-32.5)	867 (-33.8)

表 4 - 續
TABLE 4 - Cont'd

船旗 Flag	遠洋輪船 Ocean Vessels				內河船隻 River Vessels				總計 Total			
	抵港船次		淨註冊噸位 (千噸)		抵港船次		淨註冊噸位 (千噸)		抵港船次		淨註冊噸位 (千噸)	
	No. of Vessel Arrivals		NRT ('000)		No. of Vessel Arrivals		NRT ('000)		No. of Vessel Arrivals		NRT ('000)	
	(%)	(%)	(%)	(%)	(%)	(%)	(%)	(%)	(%)	(%)	(%)	
巴拿馬 Panama R	9 600	(+4.0)	99 169	(+7.5)	1 060	(+8.6)	8 503	(+47.0)	10 650	(+4.4)	107 673	(+9.8)
菲律賓 Philippines	130	(+3.1)	839	(-21.4)	*	(-57.1)	47	(-42.4)	140	(0)	886	(-22.9)
俄羅斯聯邦 Russian F	140	(-18.2)	1 096	(-18.2)	10	(-25.0)	46	(-40.0)	150	(-18.5)	1 142	(-19.4)
新加坡 Singapore R	1 720	(+8.4)	18 127	(+6.9)	80	(+23.4)	1 196	(+75.9)	1 800	(+8.9)	19 323	(+9.5)
聖文森特和 格林納丁斯 St Vincent and Grenadines	430	(-13.3)	2 085	(-7.0)	100	(-5.5)	835	(-6.5)	540	(-11.9)	2 921	(-6.8)
台灣 Taiwan	800	(-14.9)	5 309	(-24.0)	0	(-)	0	(-)	800	(-14.9)	5 309	(-24.0)
泰國 Thailand	130	(+26.9)	665	(+26.4)	0	(-100.0)	0	(-100.0)	130	(+24.5)	665	(+24.5)
英國 United Kingdom	580	(+68.2)	14 320	(+78.3)	20	(+43.8)	603	(+69.3)	600	(+67.1)	14 923	(+78.0)
美國 USA	180	(-22.8)	4 170	(-17.5)	50	(+4.3)	1 431	(+10.8)	230	(-18.4)	5 601	(-11.7)
大洋洲合眾國 US Oceania	630	(+28.4)	6 510	(+18.4)	20	(+66.7)	275	(+69.9)	640	(+29.1)	6 785	(+19.8)
其他 Others	1 090	(+13.4)	13 843	(+13.3)	230	(+132.7)	1 462	(+44.6)	1 320	(+24.4)	15 305	(+15.7)
總計 Total	35 790	(+0.5)	300 514	(+1.8)	182 270	(-0.3)	85 710	(+11.1)	218 050	(-0.2)	386 224	(+3.7)

註釋: * 少於 5 - 不適用 () % 與去年比較
Notes: * Less than 5 - Not applicable () % changes over the preceding year

表 5
TABLE 5

2003 年 按船旗分析曾停靠香港的船隻數目和淨註冊噸位
Number and NRT of Vessels Calling Hong Kong by Flag, 2003

船旗 Flag	遠洋輪船 Ocean Vessels				內河船隻 River Vessels			
	船隻數目 Number of Vessels		淨註冊噸位 (千噸) NRT ('000)		船隻數目 Number of Vessels		淨註冊噸位 (千噸) NRT ('000)	
		(%)		(%)		(%)		(%)
安提瓜和巴布達 Antigua and Barbuda	70	(+7.6)	735	(+11.8)	20	(+30.8)	240	(+56.2)
巴哈馬 Bahamas	110	(-14.6)	1 366	(-17.2)	10	(+7.7)	150	(+4.2)
伯利茲 Belize	50	(+46.9)	56	(+29.7)	20	(0)	23	(+53.3)
中國 China	640	(-6.7)	1 631	(+48.7)	1 510	(-8.9)	778	(-8.7)
塞浦路斯 Cyprus	120	(-7.9)	1 339	(-18.9)	20	(-16.7)	232	(-6.0)
丹麥 Denmark	50	(+17.4)	2 061	(+21.9)	*	(-20.0)	29	(-81.4)
德國 Germany F R	90	(+1.1)	1 915	(+17.7)	20	(-4.0)	632	(+29.0)
希臘 Greece	60	(-4.9)	1 313	(+2.3)	10	(-10.0)	191	(-6.4)
中國香港 Hong Kong, China	260	(+5.2)	2 077	(+0.8)	670	(-1.0)	820	(-20.8)
日本 Japan	20	(-28.6)	247	(-7.1)	*	(0)	18	(0)
大韓民國 Korea R	130	(+3.1)	560	(-2.8)	50	(+15.6)	134	(-23.7)
利比里亞 Liberia	300	(-3.2)	4 778	(+4.0)	70	(+4.3)	1 136	(+26.9)
馬來西亞 Malaysia	80	(-1.3)	606	(-7.8)	20	(+87.5)	143	(+175.5)
馬耳他 Malta	60	(-16.4)	780	(-27.2)	10	(-55.6)	93	(-68.7)
荷蘭 Netherlands	30	(-9.7)	493	(-6.2)	*	(-33.3)	33	(-14.4)
挪威 Norway	30	(-38.5)	476	(-40.6)	*	(0)	12	(-19.1)

表 5 - 續
TABLE 5 - Cont'd

船旗 Flag	遠洋輪船 Ocean Vessels				內河船隻 River Vessels			
	船隻數目 Number of Vessels		淨註冊噸位 (千噸) NRT ('000)		船隻數目 Number of Vessels		淨註冊噸位 (千噸) NRT ('000)	
	(%)	(%)	(%)	(%)	(%)	(%)	(%)	(%)
巴拿馬 Panama R	1 150	(+3.1)	11 906	(+11.6)	260	(+5.8)	2 345	(+10.9)
菲律賓 Philippines	40	(0)	328	(+34.9)	*	(-50.0)	47	(-41.6)
俄羅斯聯邦 Russian F	20	(-32.0)	111	(-36.0)	10	(0)	46	(-22.4)
新加坡 Singapore R	210	(-1.4)	2 404	(+2.1)	40	(0)	544	(+37.2)
聖文森特和格林納丁斯 St Vincent and Grenadines	70	(0)	359	(+9.3)	10	(-13.3)	57	(-25.3)
台灣 Taiwan	60	(-16.2)	538	(-30.1)	0	(-)	0	(-)
泰國 Thailand	30	(+30.0)	118	(+29.1)	0	(-100.0)	0	(-100.0)
英國 United Kingdom	90	(+26.4)	1 711	(+24.8)	20	(+13.3)	439	(+37.4)
美國 USA	30	(-3.2)	484	(-7.6)	10	(+42.9)	307	(+66.3)
大洋洲合眾國 US Oceania	80	(+44.4)	1 165	(+36.2)	10	(+83.3)	193	(+75.0)
其他 Others	250	(+8.6)	2 466	(+15.4)	60	(+55.3)	538	(+34.1)
總計 Total	4 110	(-0.1)	42 023	(+5.7)	2 850	(-3.8)	9 179	(+7.7)

註釋： * 少於 5 - 不適用 () % 與去年比較
Notes: * Less than 5 - Not applicable () % changes over the preceding year

表 6
TABLE 6

2003 年 按船舶類型分析離港船隻的平均在港停留時間
Average Time in Port for Vessels Departing Hong Kong by Ship Type, 2003

船舶類型 Ship Type	遠洋輪船 Ocean Vessels	內河船隻 River Vessels	小時 Hours 總計 Total
化學品運載船 Chemical Carrier/Tanker	11	21	18
普通貨船 Conventional Cargo Vessel	65	27	32
郵船 / 渡輪 Cruise/Ferry	12	N.A.	N.A.
散裝乾貨船 Dry Bulk Carrier	59	29	46
漁船 / 魚類加工船 Fishing/Fish Processing Vessel	144	N.A.	N.A.
全槽格式貨櫃船 Fully Cellular Container Vessel	23	27	26
液化氣體運載船 Gas Carrier/Tanker	27	11	24
駁船 / 躉船 / 貨艇 Lighter/Barge/Cargo Junk	170	61	62
油輪 Oil Tanker	25	51	38
滾裝船 Roll On/Roll Off	9	10	9
半貨櫃船 Semi-container Vessel	28	19	22
拖船 Tug	209	51	53
其他 Others	81	72	74
總計 Total	33	34	34

註釋： N.A. 沒有數字

Notes: N.A. Not available

表 7
TABLE 7

2003 年靠泊貨櫃碼頭的遠洋輪船統計資料
Statistics on Ocean Vessels Calling Container Terminals, 2003

項目 Item	數目 Number	比重百分率 Percentage Share
抵港遠洋輪船在貨櫃碼頭處理貨櫃的船次 Ocean Vessel Arrivals with Containers handled in Container Terminals	9 560	100.0%
	(%)	
	(+0.1)	
- 按載重噸位分析 - Analysed by DWT		
少於 10 000 載重噸 Under 10 000 DWT	620	6.5%
10 000 - 19 999 載重噸 10 000 - 19 999 DWT	1 640	17.1%
20 000 - 29 999 載重噸 20 000 - 29 999 DWT	1 720	18.0%
30 000 - 39 999 載重噸 30 000 - 39 999 DWT	980	10.2%
40 000 載重噸及以上 40 000 DWT and above	4 600	48.1%
	(-21.7)	
	(-10.9)	
	(-1.0)	
	(+2.1)	
	(+9.1)	
- 按主要貿易地區 / 國家分析 (根據所申報的上一個停靠港口) - Analysed by Principal Trading Region / Country (Based on Reported Previous Port)		
非洲 Africa	20	0.2%
澳洲、新西蘭 Australia and New Zealand	80	0.8%
中美洲、南美洲 Central and South America	120	1.2%
中國 China	1 920	20.1%
日本 Japan	700	7.4%
中東 Middle East	80	0.8%
北美洲 North America	810	8.4%
東南亞 South East Asia	3 090	32.3%
台灣 Taiwan	2 460	25.8%
西歐 Western Europe	210	2.2%
其他 Others	80	0.8%
	(+50.0)	
	(+4.2)	
	(+59.5)	
	(+2.5)	
	(-14.8)	
	(+19.4)	
	(+14.7)	
	(+7.0)	
	(-8.4)	
	(-20.5)	
	(-1.2)	
- 平均在港停留時間 (小時) - Average Time in Port (hours)	13	

註釋： () % 與去年比較

Note: () % changes over the preceding year

表 8

TABLE 8

2003 年 按夏季吃水分析抵港遠洋輪船的船次
Ocean Vessel Arrivals by Summer Draft, 2003

夏季吃水 (米) Summer Draft (m)	抵港船次 No. of Vessel Arrivals	比重百分率 Percentage Share
	(%)	
少於 2.00 Under 2.00	350 (-21.4)	1.0%
2.00 - 3.99	6 540 (+10.1)	18.3%
4.00 - 5.99	6 090 (+6.4)	17.0%
6.00 - 7.99	3 900 (-20.9)	10.9%
8.00 - 9.99	6 590 (-10.2)	18.4%
10.00 - 11.99	5 220 (+4.2)	14.6%
12.00 - 13.99	3 340 (+19.3)	9.3%
14.00 - 15.99	2 510 (+18.8)	7.0%
16.00 - 17.99	840 (-4.6)	2.4%
18.00 及以上 18.00 and above	410 (-8.9)	1.1%
總計 Total	35 790 (+0.5)	100.0%

表 9

TABLE 9

2003 年 按船隻長度分析抵港遠洋輪船的船次
Ocean Vessel Arrivals by Vessel Length, 2003

船隻長度 (米) Vessel Length (m)	抵港船次 No. of Vessel Arrivals	比重百分率 Percentage Share
	(%)	
少於 50.0 Under 50.0	3 110 (-16.2)	8.7%
50.0 - 99.9	9 730 (+14.5)	27.2%
100.0 - 149.9	6 460 (-15.3)	18.0%
150.0 - 199.9	9 160 (-0.4)	25.6%
200.0 - 249.9	2 560 (+12.0)	7.1%
250.0 - 299.9	4 050 (+8.3)	11.3%
300.0 及以上 - 300.0 and above	720 (+26.1)	2.0%
總計 Total	35 790 (+0.5)	100.0%

註釋： ()% 與去年比較

Note: ()% changes over the preceding year

表 10
TABLE 10

2003 年 按主要來港原因分析抵港遠洋輪船的船次
Ocean Vessel Arrivals by Main Reason of Call, 2003

主要來港原因 Main Reason of Call	抵港船次 No. of Vessel Arrivals		比重百分率 Percentage Share
		(%)	
補充燃料 Bunkers	50	(-20.3)	0.2%
人事轉動 (乘客、船員等) Change of Personnel (Passengers, Crew, etc.)	2 930	(+8.0)	8.2%
卸貨 Discharging Cargo	4 530	(+1.1)	12.7%
緊急修理、非例行入乾塢 Emergency Repair, Non-routine Dry Docking	30	(-9.7)	0.1%
裝貨、卸貨 Loading and Discharging Cargo	22 250	(+7.0)	62.2%
裝貨 Loading Cargo	2 940	(+23.5)	8.2%
例行入乾塢 Routine Dry Docking	10	(+25.0)	@
交換文件 Switch Documents	2 100	(+25.4)	5.9%
船上用品補給 (燃料除外) Taking Stores (Except Bunkers)	120	(-18.1)	0.3%
其他 Others	830	(-75.0)	2.3%
總計 Total	35 790	(+0.5)	100.0%

註釋： @ 少於 0.05% () % 與去年比較
Notes： @ Less than 0.05% () % changes over the preceding year

表 11
TABLE 11

2003 年跨境客運碼頭#的抵港 / 離港統計資料
Statistics on Arrivals/Departures at Cross-Boundary Ferry Terminals#, 2003

來往 From/To	運輸工具類別 Type of Carrier	提供服務的 船隻 / 直升機數目 No. of Vessels/ Helicopters in Service		抵港 Arrivals				離港 Departures			
				航次 No. of Trips		淨註冊噸位 (千噸) NRT (‘000)		航次 No. of Trips		淨註冊噸位 (千噸) NRT (‘000)	
澳門 Macau	雙體船 Catamaran	22	(0)	17 810	(+4.3)	3 470	(+8.7)	17 720	(+3.8)	3 456	(+8.3)
	噴射飛翼船 Jetfoil	15	(-6.3)	16 790	(-8.7)	1 645	(-8.6)	16 790	(-8.7)	1 645	(-8.5)
	直升機 Helicopter	5	(0)	8 840	(-1.1)	-	(-)	8 840	(-1.1)	-	(-)
小計 - 澳門 Sub-total - Macau				43 440	(-2.2)	5 115	(+2.5)	43 350	(-2.4)	5 101	(+2.2)
斗門 Doumen	雙體船 Catamaran	1	(0)	280	(+24.2)	26	(+24.2)	280	(+24.2)	26	(+24.2)
高明 Gaoming	雙體船 Catamaran	2	(-33.3)	510	(-29.9)	85	(-29.9)	510	(-29.3)	85	(-29.4)
廣州 Guangzhou	雙體船 Catamaran	10	(+66.7)	580	(-21.6)	95	(-16.2)	570	(-21.6)	95	(-16.3)
	直升機 Helicopter	0	(0)	0	(0)	-	(-)	0	(-100.0)	-	(-)
鶴山 Heshan	雙體船 Catamaran	1	(0)	90	(-13.3)	14	(-13.3)	90	(-16.0)	14	(-16.0)
虎門 Humen	雙體船 Catamaran	6	(0)	1 320	(+22.3)	192	(+15.3)	1 330	(+22.6)	192	(+15.6)
江門 Jiangmen	雙體船 Catamaran	5	(-16.7)	1 150	(-21.2)	156	(-16.5)	1 160	(-20.8)	156	(-16.1)
蓮花山 Lianhuashan	雙體船 Catamaran	4	(-55.6)	1 170	(+5.2)	201	(+4.9)	1 170	(+4.8)	201	(+4.5)
南沙 Nansha	雙體船 Catamaran	5	(0)	2 310	(-4.4)	439	(-3.7)	2 310	(-4.6)	438	(-3.9)
平州 Pingzhou	雙體船 Catamaran	4	(-33.3)	720	(-6.8)	115	(-7.3)	710	(-6.9)	115	(-7.5)
三埠 Sanbu	雙體船 Catamaran	3	(0)	360	(-7.8)	63	(-2.2)	360	(-7.4)	63	(-1.7)
蛇口 Shekou	雙體船 Catamaran	8	(+60.0)	5 500	(+16.8)	810	(+13.6)	5 500	(+16.7)	810	(+13.5)
	大船 Conventional Ferry	1	(0)	40	(+131.3)	313	(+131.3)	50	(+200.0)	406	(+200.0)
深圳 Shenzhen	雙體船 Catamaran	13	(+8.3)	3 570	(+11.4)	633	(+9.5)	3 670	(+14.1)	648	(+12.0)
	直升機 Helicopter	0	(-100.0)	0	(-100.0)	-	(-)	0	(-100.0)	-	(-)

註釋：# 包括港澳碼頭、中港碼頭及海天客運碼頭的統計。

Notes: # Including Macau Ferry Terminal, China Ferry Terminal and SkyPier.

表 11 - 續
TABLE 11 - Cont'd

來往 From/To	運輸工具類別 Type of Carrier	提供服務的 船隻 / 直升機數目 No. of Vessels/ Helicopters in Service	抵港 Arrivals				離港 Departures			
			航次 No. of Trips		淨註冊噸位 (千噸) NRT (‘000)		航次 No. of Trips		淨註冊噸位 (千噸) NRT (‘000)	
順德 Shunde	雙體船 Catamaran	6 (+100.0)	1 740 (+11.1)	308 (+11.9)	1 740 (+11.3)	300 (+12.1)				
新會 Xinhui	雙體船 Catamaran	0 (-100.0)	0 (-100.0)	0 (-100.0)	0 (-100.0)	0 (-100.0)				
新塘 Xintang	雙體船 Catamaran	0 (-100.0)	0 (-100.0)	0 (-100.0)	0 (-100.0)	0 (-100.0)				
肇慶 Zhaoqing	雙體船 Catamaran	2 (-33.3)	360 (-1.1)	70 (-1.6)	360 (-1.1)	70 (-1.6)				
中山 Zhongshan	雙體船 Catamaran	6 (0)	3 300 (-2.6)	559 (-2.8)	3 300 (-2.5)	559 (-2.7)				
珠海 Zhuhai	雙體船 Catamaran	10 (-9.1)	5 180 (+4.8)	850 (+5.0)	5 180 (+4.8)	849 (+5.0)				
小計 - 內河港口 Sub-total - River Trade Ports			28 190 (+0.9)	4 922 (+4.5)	28 290 (+1.2)	5 029 (+6.8)				
桂山島 Guishan	雙體船 Catamaran	3 (-)	30 (-)	2 (-)	30 (-)	2 (-)				
廈門 Xiamen	大船 Conventional Ferry	1 (-50.0)	10 (-90.3)	39 (-94.7)	10 (-90.3)	39 (-94.7)				
小計 - 中國沿岸港口 Sub-total - Mainland Coastal Ports			40 (-66.4)	41 (-94.5)	40 (-66.4)	41 (-94.5)				
夏龍灣 Halong Bay	大船 Conventional Ferry	1 (-)	10 (-)	93 (-)	0 (0)	0 (0)				
小計 - 其他港口 Sub-total - Other Ports			10 (-)	93 (-)	0 (0)	0 (0)				
公海 Open Sea	大船 Conventional Ferry	2 (0)	590 (+35.0)	2 156 (+27.9)	590 (+35.0)	2 156 (+27.9)				
小計 - 公海 Sub-total - Open Sea			590 (+35.0)	2 156 (+27.9)	590 (+35.0)	2 156 (+27.9)				
總計 Total			72 280 (-0.9)	12 326 (+1.6)	72 270 (-0.9)	12 326 (+1.6)				

註釋： - 不適用 ()% 與去年比較
Notes : - Not applicable ()% changes over the preceding year

表 12
TABLE 12

按跨境客運碼頭分析旅客吞吐量 (註釋一)
Passenger Throughput by Cross-Boundary Ferry Terminals (Note 1)

來往 From/To	港澳客運碼頭 (註釋二) Macau Ferry Terminal (Note 2)			中國客運碼頭 (註釋二) China Ferry Terminal (Note 2)			海天碼頭 (註釋三) SkyPier (Note 3)			總計 Total		
	2002	2003	(%)	2002	2003	(%)	2002	2003	(%)	2002	2003	(%)
澳門 (註釋四) Macau (Note 4)	8 593 500	8 127 300	(-5.4%)	2 974 400	2 242 200	(-24.6%)	-	10 900	(-)	11 568 000	10 380 300	(-10.3%)
內地 Mainland	1 487 900	1 390 000	(-6.6%)	5 539 300	4 645 500	(-16.1%)	-	80 100	(-)	7 027 200	6 115 600	(-13.0%)
越南 Vietnam	-	-	(-)	-	1 500	(-)	-	-	(-)	-	1 500	(-)
公海 Open Seas	-	-	(-)	175 200	214 500	(+22.4%)	-	-	(-)	175 200	214 500	(+22.4%)
總計 Total	10 081 400	9 517 200	(-5.6%)	8 688 900	7 103 800	(-18.2%)	-	91 000	(-)	18 770 300	16 711 900	(-11.0%)

() %與去年比較 - 不適用

() % changes over the preceding year - Not applicable

- 註釋：
- (一) 數字計至最接近的百位。
 - (二) 上述的中國客運碼頭和港澳碼頭旅客吞吐量數字源自海事處，可能與入境事務處的統計數字並不符合，原因在於：
 - (i) 有些人仕乘船毋須付船費 [例如不足一歲]，海事處並沒有把這類旅客納入統計之內；
 - (ii) 入境事務處有關中國客運碼頭旅客吞吐量數字已包括在海運碼頭所錄得以公海為目的地的旅客吞吐量。
 - (三) 海天碼頭由二零零三年九月二十八日開始運作。
 - (四) 乘搭直升機經港澳碼頭來往澳門旅客計算在內(96 800人次)。

- Notes:
- (1) Figures are rounded to the nearest hundred.
 - (2) The above passenger throughput figures for China Ferry Terminal and Macau Ferry Terminal originate from the Marine Department and may not tally with the Immigration Department's statistics because:
 - (i) Some persons travelling on board may not be required to pay fares (e.g. those less than 1 year of age) and these are not covered by the Marine Department's statistics,
 - (ii) Immigration Department's statistics for China Ferry Terminal has included Ocean Terminal's passenger throughput for cruises to high seas.
 - (3) The SkyPier started operation with effect from 28 September 2003.
 - (4) The helicopter passengers (96 800) to and from Macau via Macau Ferry Terminal have been included.

資料來源： 香港國際機場客運碼頭服務有限公司及海事處客運碼頭組

Data Source: Hong Kong International Airport Ferry Terminal Services Ltd. and Ferry Terminals Section, Marine Department

表 13
TABLE 13

2003 年跨境客運碼頭的抵港 / 離港旅客人次
Passenger Arrivals/Departures by Cross-Boundary Ferry Terminals, 2003

I. 港澳碼頭及中港碼頭
Macau Ferry Terminal and China Ferry Terminal

來往 From/To	運輸工具類別 Type of Carrier	抵港旅客 Passenger Arrivals		離港旅客 Passenger Departures	
		旅客人次 (千位數) Passengers (‘000)	載客率 Passenger Load Factor	旅客人次 (千位數) Passengers (‘000)	載客率 Passenger Load Factor
		(%)	(%)	(%)	(%)
澳門 Macau	雙體船 Catamaran	2 070 (-11.1)	31.8% (-15.6)	3 035 (-8.3)	46.8% (-12.6)
	噴射飛翼船 Jetfoil	2 560 (-11.5)	62.4% (-3.6)	2 608 (-11.2)	63.6% (-3.4)
	直升機 Helicopter	43 (-4.4)	40.3% (-3.3)	54 (-2.1)	51.0% (-1.0)
小計 - 澳門 Sub-total - Macau		4 673 (-11.3)	43.6% (-11.0)	5 697 (-9.6)	53.3% (-9.1)
斗門 Doumen	雙體船 Catamaran	23 (-11.2)	32.8% (-28.5)	22 (-20.9)	31.2% (-36.3)
高明 Gaoming	雙體船 Catamaran	65 (-11.2)	39.4% (+26.7)	68 (-11.7)	41.2% (+25.0)
廣州 Guangzhou	雙體船 Catamaran	33 (-45.1)	19.4% (-37.7)	29 (-50.9)	17.0% (-44.2)
	直升機 Helicopter	0 (-)	0% (-)	0 (-100.0)	0% (-100.0)
鶴山 Heshan	雙體船 Catamaran	13 (-37.6)	48.3% (-28.0)	14 (-41.2)	50.9% (-30.0)
虎門 Humen	雙體船 Catamaran	90 (-12.8)	30.7% (-6.9)	67 (-19.7)	22.6% (-14.4)
江門 Jiangmen	雙體船 Catamaran	148 (-9.0)	39.3% (+10.1)	141 (-11.0)	37.4% (+7.3)
蓮花山 Lianhuashan	雙體船 Catamaran	127 (-5.2)	30.6% (-10.0)	109 (-18.9)	26.5% (-22.7)
南沙 Nansha	雙體船 Catamaran	375 (-16.3)	42.9% (-12.9)	349 (-17.9)	40.1% (-14.4)
平州 Pingzhou	雙體船 Catamaran	88 (-27.1)	36.6% (-21.8)	63 (-20.6)	26.0% (-14.7)
三埠 Sanbu	雙體船 Catamaran	54 (-14.2)	40.2% (-10.0)	54 (-12.0)	40.6% (-8.2)
蛇口 Shekou	雙體船 Catamaran	333 (-20.4)	22.7% (-20.8)	343 (-10.9)	23.4% (-11.3)
	大船 Conventional Ferry	8 (+290.3)	21.0% (+68.8)	6 (+238.3)	12.8% (+12.8)

表 13 - 續
TABLE 13 - Cont'd

來往 From/To	運輸工具類別 Type of Carrier	抵港旅客 Passenger Arrivals		離港旅客 Passenger Departures	
		旅客人次 (千位數) Passengers ('000)	載客率 Passenger Load Factor	旅客人次 (千位數) Passengers ('000)	載客率 Passenger Load Factor
		(%)	(%)	(%)	(%)
深圳 Shenzhen	雙體船 Catamaran	272 (-15.0)	29.0% (-15.3)	305 (-9.4)	31.7% (-12.1)
	直升機 Helicopter	0 (-100.0)	- (-100.0)	0 (-100.0)	- (-100.0)
順德 Shunde	雙體船 Catamaran	290 (-10.9)	48.2% (-19.0)	252 (-8.8)	41.9% (-17.3)
新會 Xinhui	雙體船 Catamaran	0 (-100.0)	- (-100.0)	0 (-100.0)	- (-100.0)
新塘 Xintang	雙體船 Catamaran	0 (-100.0)	- (-100.0)	0 (-100.0)	- (-100.0)
肇慶 Zhaoqing	雙體船 Catamaran	40 (-20.3)	31.3% (-19.2)	43 (-22.4)	33.8% (-21.3)
中山 Zhongshan	雙體船 Catamaran	459 (-7.3)	39.0% (-4.9)	468 (-6.1)	39.8% (-3.7)
珠海 Zhuhai	雙體船 Catamaran	659 (-3.6)	37.0% (-8.0)	622 (-6.8)	35.0% (-11.0)
小計 - 內河港口 Sub-total - River Trade Ports		3 077 (-13.8)	34.6% (-11.2)	2 955 (-13.6)	33.1% (-11.3)
桂山島 Guishan	雙體船 Catamaran	** (-)	8.6% (-)	** (-)	7.8% (-)
廈門 Xiamen	大船 Conventional Ferry	1 (-92.9)	9.5% (-13.5)	1 (-92.1)	9.7% (-3.3)
小計 - 中國沿岸港口 Sub-total - Mainland Coastal Ports		2 (-90.0)	9.2% (-16.0)	2 (-89.2)	9.1% (-9.2)
夏龍灣 Halong Bay	大船 Conventional Ferry	2 (-)	13.8% (-)	0 (-)	0% (-)
小計 - 其他港口 Sub-total - Other Ports		2 (-)	13.8% (-)	0 (-)	0% (-)
公海 Open Seas	大船 Conventional Ferry	107 (+22.6)	17.2% (-7.8)	107 (+22.3)	17.2% (-8.0)
小計 - 公海 Sub-total - Open Seas		107 (+22.6)	17.2% (-7.8)	107 (+22.3)	17.2% (-8.0)
總計 Total		7 860 (-12.1)	38.8% (-10.9)	8 761 (-10.8)	43.3% (-9.7)

表 13 - 續
TABLE 13 - Cont'd

II. 海天客運碼頭#
SkyPier#

來往 From/To	運輸工具類別 Type of Carrier	抵港旅客 Passenger Arrivals				離港旅客 Passenger Departures			
		旅客人次 (千位數) Passengers (000)		載客率 Passenger Load Factor		旅客人次 (千位數) Passengers (000)		載客率 Passenger Load Factor	
澳門 Macau	雙體船 Catamaran	6	(-)	5.1%	(-)	5	(-)	4.7%	(-)
小計 - 澳門 Sub-total - Macau		6	(-)	5.1%	(-)	5	(-)	4.7%	(-)
虎門 Humen	雙體船 Catamaran	15	(-)	18.2%	(-)	7	(-)	9.1%	(-)
蛇口 Shekou	雙體船 Catamaran	15	(-)	8.0%	(-)	8	(-)	4.2%	(-)
深圳 Shenzhen	雙體船 Catamaran	21	(-)	15.0%	(-)	14	(-)	9.5%	(-)
小計 - 內河港口 Sub-total - River Trade Ports		51	(-)	12.4%	(-)	29	(-)	7.0%	(-)
總計 Total		57	(-)	10.9%	(-)	34	(-)	6.5%	(-)

註釋 : ** 少於 500 - 不適用 () % 與去年比較
Notes : ** Less than 500 - Not applicable () % changes over the preceding year

海天碼頭由二零零三年九月二十八日開始運作。
The SkyPier started operation with effect from 28 September 2003.

表14

TABLE 14

2003年 按主要貨物裝卸地點分析貨櫃吞吐量
Container Throughput by Main Cargo Handling Location, 2003

千個標準貨櫃單位

'000 T.E.U.s

類別 Category	貨櫃碼頭 Container Terminals			貨櫃碼頭以外 Other than Container Terminals			總計 Total
	遠洋 Ocean	內河 River	小計 Sub-total	遠洋 Ocean	內河 River	小計 Sub-total	
離港 Outward	(%)	(%)	(%)	(%)	(%)	(%)	(%)
載貨貨櫃 Laden Container	5 309 (-0.8)	490 (+2.3)	5 799 (-0.6)	1 808 (+26.4)	1 314 (+15.6)	3 122 (+21.6)	8 922 (+6.2)
空貨櫃 Empty Container	240 (+2.0)	120 (+2.5)	361 (+2.2)	109 (-9.3)	872 (+11.9)	981 (+9.1)	1 341 (+7.2)
小計 Sub-total	5 550 (-0.7)	610 (+2.3)	6 160 (-0.4)	1 917 (+23.6)	2 186 (+14.1)	4 103 (+18.4)	10 263 (+6.3)
抵港 Inward							
載貨貨櫃 Laden Container	3 575 (+3.5)	760 (+18.6)	4 335 (+5.8)	1 846 (+10.4)	1 429 (+24.0)	3 275 (+15.9)	7 610 (+9.9)
空貨櫃 Empty Container	1 501 (-2.5)	74 (+5.1)	1 575 (-2.2)	142 (+37.3)	859 (+0.2)	1 001 (+4.2)	2 576 (+0.2)
小計 Sub-total	5 075 (+1.6)	834 (+17.3)	5 910 (+3.6)	1 988 (+11.9)	2 288 (+13.8)	4 276 (+12.9)	10 186 (+7.3)
合計 Overall							
載貨貨櫃 Laden Container	8 884 (+0.9)	1 250 (+11.6)	10 134 (+2.1)	3 654 (+17.8)	2 743 (+19.8)	6 398 (+18.6)	16 532 (+7.9)
空貨櫃 Empty Container	1 741 (-1.9)	195 (+3.5)	1 936 (-1.4)	250 (+12.3)	1 731 (+5.8)	1 982 (+6.6)	3 917 (+2.5)
總計 Total	10 625 (+0.4)	1 445 (+10.5)	12 070 (+1.5)	3 904 (+17.4)	4 475 (+14.0)	8 379 (+15.5)	20 449 (+6.8)

註釋： () % 與去年比較

Note: () % changes over the preceding year

表 15
TABLE 15

2003 年 按貨櫃碼頭以外的主要貨物裝卸地點分析裝卸的貨櫃
Containers Discharged/Loaded at Main Cargo Handling Locations Other than Container Terminals, 2003

千個標準貨櫃單位
'000 T.E.U.s

主要貨物裝卸地點 (貨櫃碼頭以外) Main Cargo Handling Location (Other than Container Terminals)	遠洋 Ocean				內河 River				總計 Total	
	卸下 Discharged		裝上 Loaded		卸下 Discharged		裝上 Loaded			
	載貨貨櫃 Laden	空貨櫃 Empty	載貨貨櫃 Laden	空貨櫃 Empty	載貨貨櫃 Laden	空貨櫃 Empty	載貨貨櫃 Laden	空貨櫃 Empty	載貨貨櫃 Laden	空貨櫃 Empty
碇泊處 Anchorage	(%) 1 246 (+13.3)	(%) 116 (+53.0)	(%) 1 200 (+24.3)	(%) 88 (+7.3)	(%) 215 (+196.8)	(%) 39 (+150.0)	(%) 291 (+47.2)	(%) 130 (+58.4)	(%) 2 952 (+26.4)	(%) 373 (+45.9)
浮泡 Buoys	148 (-37.7)	3 (-46.5)	106 (-40.6)	5 (-27.1)	48 (-37.5)	65 (-9.3)	49 (-52.3)	23 (-25.5)	351 (-41.0)	97 (-16.7)
泊位和倉庫碼頭 Berths and Wharves	452 (+34.9)	22 (+6.0)	502 (+74.7)	16 (-49.6)	1 166 (+16.2)	755 (-2.0)	974 (+16.4)	719 (+8.0)	3 094 (+25.7)	1 511 (+1.6)
總計 Total	1 846 (+10.4)	142 (+37.3)	1 808 (+26.4)	109 (-9.3)	1 429 (+24.0)	859 (+0.2)	1 314 (+15.6)	872 (+11.9)	6 398 (+18.6)	1 982 (+6.6)

註釋： () % 與去年比較

Note: () % changes over the preceding year

表 16
TABLE 16

海港繫泊浮泡統計資料
Harbour Mooring Buoys Statistics

A. 浮泡數目*
Number of Buoys*

	2002	2003
“A 級”繫泊浮泡數目 No. of "A class" mooring buoys	28	19
“B 級”繫泊浮泡數目 No. of "B class" mooring buoys	25	10

備註: * 年終數字
Remark: * Figures as at end of the year

B. 使用情況
Usage

“A 級”浮泡訂用日數 Days booked for "A class" buoys	2 388	1 827
“B 級”浮泡訂用日數 Days booked for "B class" buoys	1 724	1 391
“A 級”浮泡訂用百分率 Percentage of "A class" buoys used based on booking	28.8%	27.5%
“B 級”浮泡訂用百分率 Percentage of "B class " buoys used based on booking	30.1%	29.6%
上述數字只顯示訂用情況，實際使用率則如下： Whilst the above figures are indicative of booking usage, the actual physical occupancy rates are as follows:		
“A 級”浮泡 "A class " Buoys	18.7%	23.7%
“B 級”浮泡 "B class " Buoys	18.3%	24.9%

C. 浮泡保養
Buoys Maintenance

	2002	2003
按期保養的燈浮標 Light Buoys maintained	108	107
按期保養的養魚區浮泡 Mariculture Buoys maintained	182	179
按期保養的小型繫泊浮泡 Minor Mooring maintained	180	177
按期保養的大型繫泊浮泡 Major Mooring maintained	18	18
按期保養的“A 級”海港繫泊浮泡 Harbour mooring maintained "A class"	28	28
按期保養的“B 級”海港繫泊浮泡 Harbour mooring maintained "B class"	25	25

資料來源: (A) & (B) 船隻航行監察中心 (A) & (B) Vessel Traffic Centre
Data Sources: (C) 港口後勤組 (C) Port Logistics Section

表 17
TABLE 17

2003 年 按分布地點分析香港私用繫泡數目
Number of Private Moorings Laid in Hong Kong by Location, 2003

	分布地點	Location	私用繫泡數目 Number of Private Mooring
中部 Central	香港仔南避風塘 (白沙灣)	Aberdeen South Typhoon Shelter (Pak Sha Wan)	1
	香港仔南避風塘 (布廠灣)	Aberdeen South Typhoon Shelter (Po Chong Wan)	362
	香港仔西避風塘	Aberdeen West Typhoon Shelter	4
	香港仔西避風塘 (防波堤外)	Aberdeen West Typhoon Shelter (Outside Breakwater)	19
	長洲避風塘	Cheung Chau Typhoon Shelter	14
	大嶼山愉景灣	Discovery Bay, Lantau Island	6
	熨波洲	Middle Island	96
	南丫島模達灣	Mo Tat Wan, Lamma Island	0
	大嶼山稔樹灣	Nim Shue Wan, Lantau Island	10
	大嶼山(長沙欄)	Cheung Sha Lan, Lantau Island	18
	南丫島波羅嘴	Po Lo Tsui, Lamma Island	10
	皇后碼頭西	Queen's Pier West	1
	赤柱正灣	Stanley Main Beach	4
	大潭	Tai Tam	46
	南丫島榕樹灣	Yung Shue Wan, Lamma Island	1
	堅尼地城新海旁	Kennedy Town New Praya	5
	灣仔龍景街對出海旁	Off Lung King Street (Wan Chai)	0
	坪洲西	Peng Chau West	0
	南丫島鹿洲灣	Luk Chau Wan, Lamma Island	1
	南丫島蘆荻灣	Lo Tik Wan, Lamma Island	1
	小計	Sub-total	599
東部 East	銅鑼灣避風塘	Causeway Bay Typhoon Shelter	356
	銅鑼灣避風塘 (防波堤外)	Causeway Bay Typhoon Shelter (Outside Breakwater)	0
	西貢白沙灣	Hebe Haven	763
	大埔船灣海	Shuen Wan Hoi, Tai Po	1
	大埔大尾篤	Tai Mei Tuk, Tai Po	39
	西貢大網仔	Tai Mong Tsai, Sai Kung	7
	西貢大網仔(阿公灣)	Tai Mong Tsai, Sai Kung (A Kung Wan)	1
	西貢斬竹灣	Tsam Chuk Wan, Sai Kung	10
	西貢早禾坑	Tso Wo Hang, Sai Kung	12
	往灣	Wong Wan (Double Haven)	2
	油塘灣	Yau Tong Wan	2
	三家村避風塘	Sam Ka Tsuen Typhoon Shelter	2
	高塘口灣	Ko Tong Hau Wan	1
	濠西洲	Kau Sai Chau	1
	赤徑口	Chek Keng Hau	2
		小計	Sub-total

表 17 - 續
TABLE 17 – Cont' d

	分布地點	Location	私用繫泡數目 Number of Private Mooring
西部 West	荔枝角	Lai Chi Kok	5
	北大嶼山	North Lantau	3
	大嶼山竹篙灣	Penny's Bay, Lantau Island	0
	藍巴勒海峽 (避風塘外)	Rambler Channel (Outside Typhoon Shelter)	6
	昂船洲東南	Stonecutters Island South East	1
	大欖	Tai Lam	3
	汀九	Ting Kau	62
	土瓜灣	To Kwa Wan	4
	青衣北	Tsing Yi North	4
	青衣西	Tsing Yi West	3
	荃灣	Tsuen Wan	92
	屯門 (渡輪碼頭以西)	Tuen Mun (West of Ferry Pier)	1
	屯門避風塘	Tuen Mun Typhoon Shelter	9
	屯門 (避風塘外)	Tuen Mun (Outside Typhoon Shelter)	8
	油麻地 (新避風塘防波堤外)	Yaumatei (Outside New T.S. Breakwater)	33
	油麻地避風塘	Yaumatei Typhoon Shelter	18
	小計	Sub-total	252
總計		Total	2 050 =====

資料來源： 私用繫泡分組
Data Source: Private Mooring Sub-unit

表 18
TABLE 18

垃圾收集、油污和檢控個案統計資料
Refuse Collection, Oil Pollution and Prosecution Statistics

A. 垃圾收集和油污事故
Refuse Collection and Oil Pollution Incident

項目	Item	2001	2002	2003
從海港收集的垃圾(公噸)	Refuse collected from harbour (tonnes)	9 394	9 277	11 464
從船舶收集的垃圾(公噸)	Refuse collected from vessel (tonnes)	2 660	2 591	2 463
處理的油污事故(宗)	Oil Pollution incidents tackled (cases)	66	79	97

B. 檢控統計數字
Prosecution Statistics

罪行 Offence	陳詞/聆訊個案 No. of cases heard		定罪個案 No. of cases convicted		罰款 Fine (HK\$)	
	2002	2003	2002	2003	2002	2003
違反碰撞規例 Breach of Collision Regulations	84	80	82	79	117 200	86 800
船上沒有合格船長/輪機員 No qualified master/engineer on board	343	356	339	354	250 900	254 900
違反牌照條件 Breach of licence condition	144	117	144	117	157 250	136 560
未經允許進入機場入口區域 Entered into airport approach area without permission	5	15	5	14	6 100	8 500
靠泊於已展示禁止船隻靠泊告示的岸壁/登岸梯級 Lying alongside seawall/landing steps prohibited by Notice	98	54	98	53	104 050	49 500
船隻未有領牌/並無有效牌照 Vessel was not licensed/did not have a valid licence	198	229	198	223	416 150	526 380
未獲允許運載乘客/超額運載乘客 Carrying passenger without permission/excessive passengers	35	75	35	73	14 560	60 050
沒有陳示有效的驗船/保險證明書 Failing to display valid certificate of survey/insurance	4	8	4	7	1 800	3 150
超速行駛 Steaming in excessive speed	35	38	35	38	22 950	27 950
海上拋置廢物 Marine littering	16	4	16	1	4 650	1 500
海上拋置廢物 (定額罰款) Marine Littering (Fixed Penalty Notice)	52	94	52	84	#31 800	#99 600
在公共渡輪上吸煙* Smoking on board public ferry*	2	1	1	1	300	300
其他海事罪行 Other marine offences	1 161	830	1 158	821	2 926 250	1 608 250
總計 Total	2 177	1 901	2 167	1 865	4 053 960	2 863 440

註釋： * 個案由各公共渡輪公司提出再轉交海事處跟進檢控工作。

一個申請法庭命令個案，附加罰款\$600。

* Cases initiated by public ferry companies and referred to Marine Department for follow up prosecution actions.

One Court Order applied and an additional penalty of HK\$600 imposed.

資料來源： (A) 港口後勤組
Data Sources: (B) 檢控小組

(A) Port Logistics Section
(B) Prosecution Unit

表 19
TABLE 19

香港持牌船隻統計資料
Statistics on Hong Kong Licensed Vessels
(領有有效牌照)
(with Valid Licence)

I. 香港持牌船隻 Hong Kong Licensed Vessels	2002	2003
小輪和渡輪 Launches and Ferries	650	623
只限往來指明遮蔽水域 Plying within Specified Shelter Waters	23	21
只限往來內河航限/香港水域 Plying within River Trade Limits/Waters of Hong Kong	627	602
雜類航行器 Miscellaneous Craft	8 011	8 225
機動 Mechanised	6 082	6 187
非機動 Non-mechanised	1 929	2 038
遊樂船隻 Pleasure Vessels	4 515	4 719
小計 – (不包括住家船隻) Sub-total - (excluding Dwelling Vessels)	13 176	13 567
II. 住家船隻(全部在銅鑼灣避風塘) Dwelling Vessels (All in Causeway Bay Typhoon Shelter)	6	6
總數 Total	13 182 =====	13 573 =====

閒置船隻於年底的數字 Vessels laid-up as at year end	23	22
--	----	----

資料來源: 牌照及關務組
Data Source: Licensing and Port Formalities Section

表 20
TABLE 20

2003 年 按噸位等級分析香港持牌船隻
Hong Kong Licensed Vessels by Tonnage Classification, 2003

雜類航行器 Miscellaneous Crafts		60 淨噸及以下 60 net tons and below		61 至 300 淨噸 61 - 300 net tons		300 淨噸以上 Over 300 net tons		總計 Grand Total
		機動 Mechanised	非機動 Non-Mechanised	機動 Mechanised	非機動 Non-Mechanised	機動 Mechanised	非機動 Non-Mechanised	
第 I 類 Class I	載客舢舨 Passenger Sampan	92	22	-	-	-	-	114
第 II 類 Class II	駁船和躉船 Lighters and Barges	129	9	180	48	52	735	1 153
第 III 類 Class III	固定船隻 Stationary Vessels	-	178	-	30	-	7	215
第 IV 類 Class IV	漁船 Fishing	341	796	-	-	-	-	1 137
	鋼殼漁船 Steel Fishing	-	-	24	-	2	-	26
	雜類船隻 Miscellaneous	340	101	4	37	2	67	551
	裝有舷外機的開敞式舢舨 Outboard Open Sampan	2 703	-	-	-	-	-	2 703
第 V 類 Class V	營業船隻 Trading Vessels	35	-	6	-	-	-	41
第 VI 類 Class VI	漁船 Fishing	788	1	1 489	-	-	-	2 278
第 VII 類 Class VII	浮塢/浮置工場 Floating Dock/Workshop	-	-	-	1	-	4	5
第 VIII 類 Class VIII	水上食肆 Floating Restaurant	-	-	-	-	-	2	2
	小輪和渡輪 Launches and Ferries	393	-	219	-	11	-	623
總數 Total		4 821	1 107	1 922	116	67	815	8 848

註釋： 不包括遊樂船及住家船隻
Notes: Excluding Pleasure Vessels and Dwelling Vessels

- 不適用
- Not applicable

資料來源： 牌照及關務組
Data Source: Licensing and Port Formalities Section

表 21
TABLE 21

用作裝卸貨物和海港工程的持牌船隻 (屬第 II 類持牌船隻)
Licences on Cargo Working and Harbour Engineering Crafts (i.e. Class II Vessel Licences)

A. 有效牌照數目(截至年底)
Number of Valid Licences (as at year end)

年份 Year	非自航鋼臺 Dumb Steel Lighter		機動貨艇 Motor Cargo Boats		總數 Total	
		(%)		(%)		(%)
1999	914	(-0.9)	357	(+6.5)	1 271	(+1.0)
2000	909	(-0.5)	371	(+3.9)	1 280	(+0.7)
2001	885	(-2.6)	381	(+2.7)	1 266	(-1.1)
2002	804	(-9.2)	357	(-6.3)	1 161	(-8.3)
2003	792	(-1.5)	361	(-0.2)	1 153	(-0.7)

B. 牌照數目(包括有效牌照及年尾待續牌照)
Number of Licences (including valid licences and those pending renewal as at year end)

年份 Year	非自航鋼臺 Dumb Steel Lighter		機動貨艇 Motor Cargo Boats		總數 Total	
		(%)		(%)		(%)
1999	1 040	(-9.4)	396	(+4.7)	1 436	(-5.9)
2000	1 020	(-1.9)	404	(+2.0)	1 424	(-0.8)
2001	980	(-3.9)	416	(+3.0)	1 396	(-2.0)
2002	928	(-5.3)	404	(-2.9)	1 332	(-4.6)
2003	861	(-7.2)	403	(-0.2)	1 264	(-5.1)

註釋： () % 與去年比較

Notes: () % changes over the preceding year

資料來源： 牌照及關務組
Data Source: Licensing and Port Formalities Section

表 22
TABLE 22

船舶安全監督統計資料
Ship Safety Statistics

A. 貨船安全統計數字
Cargo Ships Safety Statistics

	2002	2003
I. 海事處註冊貨船數目 No. of Cargo Ships in the Hong Kong Register		
a. 所管理公約貨船數目 (截至年底) No. of convention cargo ships under the Register (as at year end)	547	668
b. 所管理公約貨船總噸位 (截至年底) Gross register tonnage of convention cargo ships under the Register (as at year end)	16 127 577	20 576 068
c. 新申請在香港註冊公約貨船數目 No. of convention cargo ships newly registered	161	205
d. 新申請在香港註冊公約貨船總噸位 Gross register tonnage of convention cargo ships newly registered	4 082 276	6 247 636
II. 海事處註冊貨船品質審查 / 檢驗數目 No. of Hong Kong registered cargo ships quality checked/inspected		
a. 品質審查的註冊貨船數目 Quality checks on Hong Kong registered cargo ships	205	668
b. 品質檢驗和稽核貨船數目 No. of Flag State Quality Control ship inspections and company visits	45	47
c. 審核船體、機械和設備圖則數目 No. of plans examined in respect of hull, machinery and equipment	973	1 962
III. 貨船設備安全證明書 Cargo Ship Safety Equipment Certificate		
a. 所簽發的豁免證明書數目 No. of exemption certificates issued	65	71
b. 應其他國家機關要求而檢驗的外來船舶, 以簽發設備安全證明書 Foreign ships surveyed at the request of other national authorities for the issue of SEC	0	0
IV. 貨船無線電安全證明書 Cargo Ship Safety Radio Certificate		
a. 所簽發的豁免證明書數目 No. of exemption certificates issued	71	0
b. 應其他國家機關要求而檢驗的外來船舶, 以簽發無線電安全證明書 Foreign ships surveyed at the request of other national authorities for the issue of SRC	5	4
V. 其他 Others		
a. 所簽發的《海員培訓、發證和值班標準國際公約》最低安全配員證書 STCW Minimum Safe Manning Certificate issued	241	342
b. 對構造安全、設備安全、無線電安全證明書的監察, 包括中期檢驗 Safety Construction, Equipment and Radio Certificates monitored including Intermediate Surveys	1 137	1 419
c. 對國際載重線證明書的監察, 包括定期檢驗 International Load Line Certificate monitored including periodic surveys	237	308
d. 對國際防止油污證書的監察 - 續期、年度 / 中期檢驗 International Oil Pollution Prevention Certificate monitored - renewal, annual / intermediate surveys	307	406
e. 對新船公司所作的國際安全管理稽核 ISM audits of new shipping companies	23	19
f. 其他檢驗 (例如合格證書等) Other surveys (e.g. Certificates of Fitness etc)	5	0

表 22 - 續
TABLE 22 - Cont'd

B. 客船安全統計數字
Passenger Ships Safety Statistics

	2002	2003
I. 所管理公約客船 Convention passenger ships administered		
a. 數目 Number	37	38
b. 總噸位 Gross register tonnage	16 506	16 773
II. 客船安全證明書 Passenger and Safety Certificates		
a. 客船安全證明書 - 國際航線 PSSC - International Voyage	0	0
b. 客船安全證明書 / 高速船安全證明書 - 內河航限 PSSC/HSCSC - River Trade Limits	PSSC - 1 HSCSC - 48	PSSC - 0 HSCSC - 65
c. 延長客船安全證明書有效期 Extensions to Passenger and Safety Certificate	3	0
d. 客船安全證明書檢驗船舶總數 Total number of vessels surveyed for P&S Certificate	52	65
e. 受檢驗的客船無線電裝置 Passenger ship radio installations surveyed	61	75
f. 所簽發的載重線證書數目 No. of Load Line Certificate issued	8	7
g. 所簽發的載重線豁免證書數目 No. of Load Line Exemption Certificate issued	12	6
h. 所簽發的國際防止油污證書及增補數目 No. of IOPP Certificate with Supplement issued	11	8
i. 所簽發的國際防止油污豁免證書數目 No. of IOPP Exemption Certificate issued	6	0
j. 所簽發的最低安全配員證書數目 No. of Minimum Safe Manning Certificate issued	21	29
k. 對船公司所作的安全管理稽核 ISM audits of shipping companies	2	2
l. 對船舶所作的安全管理稽核 ISM audits of ships	11	27
m. 所簽發的 ISM 符合證明數目 No. of ISM Document of Compliance (DOC) issued	0	0
n. 所簽發的 ISM 安全管理證明書數目 No. of ISM Safety Management Certificate (SMC) issued	1	4
o. 所簽發的臨時 ISM 安全管理證明書數目 No. of Interim ISM Safety Management Certificate (SMC) issued	4	2

(待續)

(To be cont' d)

表 22 – 續
TABLE 22 – Cont'd

B (續)
B (Cont'd)

	2002	2003
III. 雜項檢查，圖則審核和設備 Miscellaneous Inspection, plans approval and equipment		
a. 審核客船船體、機械和設備圖則 Plans examined for hull, machinery and equipment of passenger ships	422	176
b. 檢驗船舶以備拖帶或付運 Surveys for vessels clearing under tow or delivery	53	45
c. 驗證航行燈(電、油) Navigation lanterns (electric / oil) certified	0	0
d. 檢驗備有紀錄的充氣救生筏 / 前往檢驗次數 Inflatable liferafts with log sheets surveyed/ No. of survey visits	247/73	300/115
e. 經檢查和蓋章的救生圈 Lifebuoys, inspected and stamped	0	0
f. 經檢查和蓋章的救生衣 Lifejackets, inspected and stamped	0	0
g. 簽發檢查證明書、雜項檢驗 / 檢查 Certificate of Inspection issued, miscellaneous surveys/inspections	159	128

C. 港口國監督統計數字
Port State Control Statistics

	2002	2003
在香港特別行政區港口內進行的港口國監督檢查： Port State Control Inspections in the harbour of Hong Kong Special Administrative Region:		
a. 在履行身為港口國監督委員而對《東京諒解備忘錄》應有的責任下，受港口國監督檢查的個別外來船舶數目 Number of individual foreign ships inspected under the obligation to Tokyo MOU, as a member Port State of the Committee	978	966
b. 對外來船舶進行港口國監督檢查(包括複檢)總數 Total number of Port State Control inspections carried out for foreign ships, including re-inspections	1 043	1 092
c. 被扣留在香港不符合標準船舶的數目 Number of sub-standard ships detained in Hong Kong	116	264

資料來源：

- (A) (I) 船舶註冊及商船海員管理處
(A) (II-V) 貨船安全組
(B) 客船安全組
(C) 港口國監督組

Data Sources:

- (A) (I) Shipping Registry and Mercantile Marine Office
(A) (II-V) Cargo Ships Safety Section
(B) Passenger Ships Safety Section
(C) Port State Control Section

表 23
TABLE 23

本地船舶安全統計資料
Statistics on Local Vessels Safety

A. 檢驗和檢查載客小輪、渡輪、貨船、水上食肆、機動帆船和水艇等
Surveys and Inspections of Passenger Launches, Ferry Vessels, Cargo Vessels, Marine Restaurants, Mechanised Junks and Water Boats, etc.

	2002	2003
a. 簽發/批註乾舷勘定證書數目 No. of the Assignment of Freeboard Certificate Issued / Endorsed	670	671
b. 簽發安全設備 - 檢驗記錄 (驗船表格 183) 數目 No. of Survey Record - Safety Equipment (Survey 183) Issued	22	25
c. 簽發/ 批註載重線證明書數目 No. of Load Line Certificate Issued / Endorsed	59	52
d. 簽發噸位丈量記錄數目 No. of Record of Tonnage Measurement Issued	1	2
e. 船隻傾斜測試及穩性確定數目 No. of Vessels Inclining Tested and Stability Information Assessed	97	120
f. 簽發認可運載散裝石油產品聲明書數目 No. of Declaration of Fitness for Vessel to Carry Petroleum Product in Bulk Issued	157	154
g. 簽發散裝有毒液體物質的防污證書數目 No. of Pollution Prevention Certificates for the Carriage of Noxious Liquid Substances in Bulk Issued	12	23
h. 簽發認可運載危險貨物聲明書數目 No. of Declaration of Fitness for the Carriage of Dangerous Goods Issued	35	40
i. 簽發香港防止油類污染明證書數目 No. of Hong Kong Oil Pollution Prevention Certificates Issued	21	10
j. 簽發驗船證書給載客小輪和渡輪數目 No. of Certificate of Survey Issued for Passenger Launches and Ferry Vessels	591	586
k. 簽發檢驗證明書給西式雜類船隻數目 No. of Certificate of Inspection Issued for Western Type Vessel of Miscellaneous Craft	303	295
l. 簽發檢驗證明書給亞洲式雜類船隻數目 No. of Certificate of Inspection Issued for Asiatic Type Vessel of Miscellaneous Craft	2 722	2 702
m. 執行安全檢驗(加簽 M.O. 70)用於停留不動船及雜類船隻數目 No. of Stationary and Miscellaneous Vessels for Safety Inspection (for Endorsing M.O. 70)	161	193
n. 停留不動船隻安全檢驗次數 No. of Stationary Vessels for Safety Inspection Visits	194	261

(待續)
(To be cont'd)

表 23 - 續
TABLE 23 - Cont'd

A (續)
A (Cont'd)

	2002	2003
o. 執行其他政府部門要求檢查的船隻數目 No. of Inspections of Vessels for other Government Departments	88	133
p. 檢驗碰撞後破損的本地船隻數目 No. of Inspection surveys of Damaged Local Vessels after Collision	14	14
q. 抽查小輪、渡輪、水上食肆等數目 No. of Spot-checks on Launches, Ferry Vessels, Marine Restaurants etc.	21	52
r. 審核領牌船隻的船體，機械和設備圖則數目 No. of Plans of Hull, Machinery and Equipment Examined for Licensed Vessels	8 474	9 077
s. 海外檢驗領牌船隻次數 No. of Overseas visits for Inspection of Licensed Vessels	226	238
t. 完成首次檢驗而新領牌的船隻數目 No. of Newly Licensed Vessels after completed Initial Survey	63	73
u. 領牌船隻在本港首次及定期檢查次數 No. of Initial and Periodical Inspection Visits Made Locally to Licensed Vessels	5 196	5 041
v. 在本港檢驗領牌船隻的數目(不包括停留不動船隻) No. of Licensed Vessels Inspected Locally (excluding Stationary Vessels)	3 616	3 578
w. 出版或已修訂的安全刊物 / 舉辦安全講座及研討會等總數 Total Number of Safety Publications Revised or Issued / Talks and Seminars Conducted etc.	10	4
x. 簽發 / 註檢驗證書/認可聲明書/記錄等給本地領牌船隻的總數目 Total no. of Inspection Certificates/ Declarations/ Records etc Issued/ Endorsed to Licensed Vessels	4 851	4 873
y. 檢驗本地船隻總次數 (包括新船、現有船隻及抽查船隻等) Total no. of Inspection Visits Made to Local Vessels (New, Existing and Spot-check Vessels etc.)	5 739	5 741
z. 檢驗本地船隻總隻數 (包括新船、現有船隻及抽查船隻等) Total no. of Local Vessels Inspected (New, Existing and Spot-check Vessels etc.)	3 840	3 844

註釋： (1) 項目 v 是項目 j 至 l 的總和
(2) 項目 x 是項目 a 至 m 的總和
(3) 項目 y 是項目 n 至 q, s 及 u 的總和
(4) 項目 z 是項目 m, t 及 v 的總和

Notes: (1) Item v is the total of items j to l
(2) Item x is the total of items a to m
(3) Item y is the total of items n to q, s and u
(4) Item z is the total of items m, t and v

表 23 - 續

TABLE 23 - Cont'd

B. 檢查正在修理、拆卸或從事裝卸貨物的船舶、調查海上工業意外事故
 Inspections of Vessels Undergoing Repair or Demolition or Engaged in Cargo Handling, Investigations of Marine Industrial Accidents.

	2002	2003
a. 檢查正在修理的船舶 Inspections of Vessels Undergoing Repair	1 320	1 498
b. 檢查海事工程船舶 Inspections of Vessels Engaged in Marine Construction	374	261
c. 檢查遠洋船裝卸貨物工具 Cargo Gear Inspections on Ocean-going Vessels	405	346
d. 檢查遠洋船裝卸貨物 Stevedoring Inspections on Ocean-going Vessels	3 799	3 665
e. 檢查駁船裝卸貨物工具 Cargo Gear Inspections on Lighters	3 632	3 679
f. 檢查駁船裝卸貨物 Stevedoring Inspections on Lighters	1 341	1 282
g. 檢查貨櫃 Inspections of Containers	8 337	6 621
h. 調查致命的非海事工業意外 Non-marine Industrial Fatal Accidents Investigated	0	0
i. 調查致命的海事工業意外 Marine Industrial Fatal Accidents Investigated	11	3
j. 調查嚴重意外 Serious Accidents Investigated	23	6
k. 調查嚴重意外 (無傷亡) Serious Incidents (No Casualty) Investigated	1	0
l. 查詢非嚴重意外 Non-serious Accidents Inquired	396 (343)	** (249)
m. 修船意外總數 Total Ship Repair Accidents	92 (81)	** (51)
n. 裝卸貨物意外總數 Total Cargo Handling Accidents	357 (316)	** (290)
o. 海事工程意外總數 Total Marine Construction Accidents	23 (18)	** (20)

註釋： ** 未有 2003 年實際數字
 () 年底時的估計數字

Notes: ** Actual figures for 2003 not yet available
 () Estimates as at year end

(待續)

(To be cont'd)

表 23 - 續
TABLE 23 - Cont'd

B (續)
B (Cont'd)

	2002	2003
p. 簽發修船許可證 Letters of Permission to Undertake Repairs Issued	3104	3 518
q. 轉介檢控小組的個案 Cases Referred to Prosecutions Unit	4	4
r. 發出警告信 Warning Letters Issued	56	28
s. 發出安全指令 Safety Directions Issued	104	36
t. 出版或已修訂的安全小冊子/ 單張 / 海報 / 貼紙數目 Number of Safety Pamphlets / Leaflets / Posters / Stickers Published or Revised	10	4
u. 出版或已修訂的安全指南數目 Number of Safety Guides / Codes of Practice Published or Revised	3	2
v. 舉辦安全講座及研討會數目 Number of Safety Talks and Seminars Conducted	12	20
w. 事工業安全檢查總數 (不包括貨海櫃檢查數目) Total Number of Marine Industrial Safety Inspections (excluding number of containers inspected)	10 871	10731
x. 調查及查詢的海事工業意外總數 Total Number of Marine Industrial Accidents Investigated / Inquired	431 (378)	** (258)
y. 海事工業意外發生總數 Total Number of Marine Industrial Accidents Occurred	472 (415)	** (361)
z. 發出安全指令/ 出版或已修訂的安全? 物 / 舉辦安全講座及研討會等總數 Total Number of Safety Directions Issued / Publications Revised or Issued / Talks and Seminars Conducted etc.	129	62

註釋： ** 未有 2003 年實際數字
() 年底時的估計數字
項目 w 是項目 a 至 f 的總和。
項目 x 是項目 h 至 l 的總和。
項目 y 是項目 m 至 o 的總和。
項目 z 是項目 s 至 v 的總和

Notes: ** Actual figures for 2003 not yet available
() Estimates as at year end
Item w is the total of items a to f.
Item x is the total of items h to l.
Item y is the total of items m to o.
Item z is the total of items s to v.

表 23- 續
TABLE 23 - Cont'd

C. 所失的香港註冊和持牌船舶
Loss of Vessels Registered in Hong Kong

船舶類型 Class of Vessel	該類船隻數目 Number of Vessel		失船數目 Number Lost		失船百分率 Percentage Lost	
	2002	2003	2002	2003	2002	2003
IMO 公約船舶 (香港註冊) IMO Convention (HK Registered)	547	668	0	0	0	0

D. 2003 年 海上意外事故
Marine Accidents in 2003

意外事故類別 Type of Accident	本港水域範圍以內 Within Hong Kong Waters				本港水域範圍以外 Outside Hong Kong Waters			
	個案數目 No. of Case	死亡人數 Persons Killed	受傷人數 Persons Injured	失蹤人數 Persons Missing	個案數目 No. of Case	死亡人數 Persons Killed	受傷人數 Persons Injured	失蹤人數 Persons Missing
碰撞 Collision	219	0	32	0	18	2	0	0
擱淺 / 觸礁 Stranding/ Grounding	25	0	2	0	11	0	0	0
沉沒 / 入水 Foundering / Sinking	15	0	0	0	3	0	0	0
火警 / 爆炸 Fire / Explosion	20	2	2	0	2	0	0	2
船隻失蹤 Missing	0	0	0	0	0	0	0	0
翻沉 / 傾斜 Capsized / Listing	11	1	5	1	0	0	0	0
結構故障 Structural Failure	0	0	0	0	0	0	0	0
機械故障 Machinery Failure	8	0	0	0	0	0	0	0
惡劣天氣 損壞 Heavy Weather Failure	1	0	0	0	0	0	0	0
接觸 Contact	44	0	24	0	5	0	0	0
器材損壞 Damage to Equipment	1	0	0	0	0	0	0	0
其他 Others	14	2	0	0	4	0	2	0
總數 Total	358	5	65	1	43	2	2	2

表 23 - 續
TABLE 23 - Cont'd

E. 海上意外事故調查
Marine Accident Investigation

項目	Items	2002	2003
調查意外事故 (《船舶及港口管制條例》)	Accidents Investigated (Shipping and Port Control Ordinance)	11	17
初步研訊 (《商船條例》)	Preliminary Inquiries (Merchant Shipping Ordinance)	1	1
領港研訊 (《領港條例》)	Pilotage Inquiries (Pilotage Ordinance)	1	0
海事法庭	Marine Courts	0	0
調查委員會	Board of Inquiry	0	0
對調查委員會裁決提出上訴	Appeal against the decision by Board of Inquiry	0	0

資料來源: (A) 本地船舶安全組 (A) Local Vessels safety Section
Data Sources: (B) 海事處工業安全組 (B) Marine Industrial Safety Section
(C) 船舶註冊及商船海員管理處 (C) Shipping Registry and Mercantile Marine Office
(D) & (E) 海事意外調查組 (D) & (E) Marine Accident Investigation Section

表 24
TABLE 24

海員發證、註冊和僱用統計資料
Seafarers' Certification, Registration and Employment Statistics

A. 遠洋合格證書考試 Foreign-going Examinations - Certificates of Competency	2002		2003	
	考試人數 Examined	及格人數 Passed	考試人數 Examined	及格人數 Passed
一級甲板高級船員(商船船長) Deck Officer Class 1 (Master Mariner)				
筆試 Written	0	0	0	0
口試 Oral	6	6	15	15
二級甲板高級船員 Deck Officer Class 2				
筆試 Written	1	0	0	0
口試 Oral	0	0	0	0
訊號 Signal	0	0	0	0
三級甲板高級船員 Deck Officer Class 3				
筆試 Written	9	2	7	4
口試 Oral	3	3	3	3
訊號 Signal	1	1	5	3
小計 Sub-total	20	12	30	25
一級輪機師 Marine Engineer Officer - Class 1				
甲部 Part A	0	0	0	0
乙部 Part B	7	5	6	6
二級輪機師 Marine Engineer Officer - Class 2				
甲部 Part A	3	0	2	0
乙部 Part B	1	0	2	2
三級輪機師 Marine Engineer Officer - Class 3				
小計 Sub-total	36	20	12	9
總計 Total	56	32	42	34

B. 內河航行考試 River Trade Examinations	2002		2003	
	考試人數 Examined	及格人數 Passed	考試人數 Examined	及格人數 Passed
一級甲板高級船員 Deck Officer Class 1				
筆試 Written	6	5	3	2
口試 Oral	3	3	5	5
訊號 Signal	0	0	5	5
二級甲板高級船員 Deck Officer Class 2				
筆試 Written	4	3	3	3
口試 Oral	5	4	4	4
訊號 Signal	0	0	6	5
三級甲板高級船員 Deck Officer Class 3				
筆試 Written	21	10	20	5
口試 Oral	13	12	9	6
訊號 Signal	9	8	19	14
小計 Sub-total	61	45	74	49
一級輪機師 Marine Engineer Officer - Class 1				
二級輪機師 Marine Engineer Officer - Class 2				
三級輪機師 Marine Engineer Officer - Class 3				
小計 Sub-total	10	0	15	6
總計 Total	71	45	89	55

表 24 - 續
TABLE 24 - Cont'd

C. 本地合格證書 Local Certificates of Competency	2002		2003	
	考試人數 Examined	及格人數 Passed	考試人數 Examined	及格人數 Passed
船長 - 300 噸或以下船隻 Master - Vessels up to 300 tons	107	49	158	79
船長 - 60 噸或以下船隻 Master - Vessels up to 60 tons	439	127	332	110
船長 - 漁船 Master - Fishing Vessels	59	19	23	5
船長 - 限制 Master - Restricted	60	13	51	19
小計 Sub-total	665	208	564	213
輪機員 - 渡輪船隻 Engineer - Ferry Vessels	3	3	1	1
輪機員 - 150 匹馬力以上船隻 Engineer - Vessels over 150 BHP	316	108	355	162
輪機員 - 150 匹馬力或以下船隻 Engineer - Vessels up to 150 BHP	30	11	11	4
輪機員 - 漁船 Engineer - Fishing Vessels	53	22	22	13
小計 Sub-total	402	144	389	180
總計 Total	1 067	352	953	393

D. 遊樂船隻證書考試 Pleasure Vessel Certificate Examinations	2002		2003	
	考試人數 Examined	及格人數 Passed	考試人數 Examined	及格人數 Passed
船長 - 遊樂船隻 (考試) Master - Pleasure Vessel (Examination)	2 461	1 414	2 507	1 486
船長 - 遊樂船隻 (豁免) Master - Pleasure Vessel (Exemption)	220	206	236	234
輪機員 - 遊樂船隻 (考試) Engineer - Pleasure Vessel (Examination)	3 312	1 434	3 630	1 886
輪機員 - 遊樂船隻 (豁免) Engineer - Pleasure Vessel (Exemption)	153	145	163	162
總計 Total	6 146	3 199	6 536	3 768

表 24 - 續
TABLE 24 - Cont'd

E. 部門考試 Departmental Examinations		2002		2003	
		考試人數 Examined	及格人數 Passed	考試人數 Examined	及格人數 Passed
一級航行證書	1st Class Certificate of Navigation	6	6	13	13
二級航行證書	2nd Class Certificate of Navigation	0	0	0	0
三級航行證書	3rd Class Certificate of Navigation	2	0	2	2
一級本地船長	Coxswain Grade 1	7	7	19	19
二級本地船長	Coxswain Grade 2	94	35	173	50
三級本地船長	Coxswain Grade 3	124	63	66	47
一級小輪大偈	Launch Mechanic Class 1	0	0	7	7
二級小輪大偈	Launch Mechanic Class 2	0	0	0	0
三級小輪大偈	Launch Mechanic Class 3	0	0	0	0
一級輪機操作員	Engine Operator Grade 1	12	12	17	17
二級輪機操作員	Engine Operator Grade 2	68	17	81	28
三級輪機操作員	Engine Operator Grade 3	158	37	134	27
遊樂船隻船長	Pleasure Vessel Master	42	21	54	35
遊樂船隻輪機員	Pleasure Vessel Engineer	55	10	46	30
總計 Total		568	208	612	275

F. 其他考試 / 評定 Other Examinations/Assessments		2002		2003	
		考試人數 Examined	及格人數 Passed	考試人數 Examined	及格人數 Passed
救生艇筏熟練操作證書	Proficiency in Survival Craft Certificate	0	0	0	0
高級水手 / 水手證書	AB/EDH Certificate	0	0	1	1
視力測驗	Eye Sight Test	0	0	0	0
類型級別證書 (考試、重新生效及夜航批准)	Type Rating Certificate (Examination, Revalidation and Night Service Approval)	443	443	627	627
香港執照	Hong Kong Licence	8 356	8 356	6 144	6 144
暫時執照	Temporary Licence	6	6	0	0
本地豁免	Local Exemption	352	352	365	365
總計 Total		9 157	9 157	7 137	7 137

表 24 - 續
TABLE 24 - Cont'd

G. 截至2003年12月31日為止的海員註冊人數
Seafarer's Registration as at 31.12.2003

根據第478章註冊的海員 Seafarers Registered Under Cap.478	第一部 Part I	第二部 Part II	合計 Total
	3 188	723	3 911

H. 2003年所發僱用登記簿數目
Employment Registration Books Issued, 2003

續發簿 Subsequent Books	9
補發簿 Replacement Books	6
新海員簿 New Entrants Books	101
總計 Total	116

I. 2003年 僱用統計數字
Employment Statistics, 2003

期間 Period	僱用海員方式 Seafarers Employed Through			
	核准公司名冊 Permitted C.R.	總名冊 G.R.	緊急僱用 / 重新僱用等 Emergency / Re-employment, etc.	總計 Total
2003年第一季 1st Quarter 2003	70	1	1	72
2003年第二季 2nd Quarter 2003	25	0	93	118
2003年第三季 3rd Quarter 2003	50	1	471	522
2003年第四季 4th Quarter 2003	44	6	0	50
總計 Total	189	8	565	762

J. 船公司及職位統計數字
Companies and Posts Statistics

截至2003年12月31日為止在商船海員管理處登記僱用本港註冊海員的船公司數目 Shipping companies listed with M. M. Office to employ Hong Kong registered seafarers as at 31.12.2003	29
2003年 按船公司所交周年報表而編製的本港海員就業職位 Posts filled by Hong Kong seafarers as compiled from annual returns submitted by shipping companies, 2003	1 151

表 24 - 續
TABLE 24 - Cont'd

K. 2003年 訂立和終結的香港註冊船舶船員協議條款
Crew Agreement of Hong Kong Registered Ships Opened and Closed, 2003

項目 Item	所訂立的協議 Agreements Opened		終結的協議 Agreements Closed	
	在香港境內 In Hong Kong	在香港境外 Outside Hong Kong	在香港境內 In Hong Kong	在香港境外 Outside Hong Kong
船員協議條款數目 No. of agreements	61	620	57	483
總計 Total	681		540	

L. 香港註冊船舶僱用和解職的海員人數**
Number of Seafarers** Employed and Discharged by Hong Kong Registered Ships

年份 Year	2001	2002	2003
所僱用的海員人數 No. of seafarers employed	19 404	24 162	28 641
解職的海員人數 No. of seafarers discharged	18 075	21 306	25 761

註釋： ** 數字包括在香港以外地方註冊的海員。

Note: ** The figures include seafarers registered outside Hong Kong.

資料來源: (A) - (F) 海員發證組 (A) - (F) Seafarers' Certification Section
Data Sources: (G) - (L) 商船海員管理處 (G) - (L) Mercantile Marine Office

表 25
TABLE 25

香港註冊船舶統計資料
Statistics on Ships Registered in Hong Kong

A. 2002 和 2003 年底的船舶數目和噸位

Number of Ships and Tonnage as at end of 2002 and 2003

	船舶數目 <u>No. of ships</u>	淨噸位 <u>Net tonnage</u>	總噸位 <u>Gross tonnage</u>
(i) 2002 年 12 月 31 日船舶註冊概況 On register as at 31.12.2002	758	9 341 601	16 230 270
(ii) 2003 年註冊的船舶 Ships Registered in the year of 2003	221	3 539 569	6 226 804
(iii) 2003 年取消註冊的船舶 Ships De-registered in the year of 2003	100	991 863	1 768 813
(iv) 2003 年 12 月 31 日船舶註冊概況 On register as at 31.12.2003	879	11 889 308	20 688 261

註釋: 淨噸位及總噸位以每單位 100 立方呎計算。

Notes: (i) + (ii) - (iii) ≠ (iv) 因部分註冊船舶
於 2003 年更改噸位所致。
詳情請參閱第四部附錄 F 及 G。

Net and gross tonnages are in units of 100 cubic feet.

(i) + (ii) - (iii) ≠ (iv) due to alteration of tonnages of
some ships already on register in 2003.

For details, please see Appendices F & G in Part IV.

B. 2003 年按總噸位分配分析香港註冊船舶數目

Ships Registered at Hong Kong by Gross Tonnage Distribution, 2003

總噸位分配 (噸) Gross Tonnage Distribution (tons)	船舶數目 No. of Ships
500 以下 Under 500	155
500 - 999	45
1 000 - 1 999	14
2 000 - 2 999	7
3 000 - 3 999	25
4 000 - 4 999	13
5 000 - 9 999	91
10 000 - 14 999	49
15 000 - 19 999	109
20 000 - 24 999	53
25 000 - 29 999	100
30 000 - 34 999	20
35 000 - 39 999	95
40 000 - 44 999	15
45 000 - 49 999	1
50 000 - 54 999	0
55 000 - 59 999	6
60 000 - 64 999	0
65 000 - 69 999	14
70 000 - 84 999	20
85 000 - 114 999	25
115 000 - 144 999	4
145 000 - 174 999	18
總計 Total	879

資料來源: 船舶註冊處

Data Source: Shipping Registry

表 26
TABLE 26

政府船隊統計資料
Government Fleet Statistics

		<u>02/03</u>	<u>03/04</u>
A.	開支預算總額 (百萬元) Total expenditure estimate (\$M)	413 (實際 Actual)	424 (預算 Estimate)
B.	以 12 月 31 日計算的員工總數(包括船員) Total no. of staff (including crew) as at 31 st December	<u>2002</u> 644	<u>2003</u> 624
C.	付運的政府船舶 Government Vessels delivered	24	19
D.	新船招標 / 報價 Tenders/Quotations called for new vessels	12	20
E.	新船合約 Contracts awarded for new vessels	12	25
F.	已完成的合約及購買規格書 Contracts and procurements specifications completed	24	45
G.	船舶總數 Total number of vessels	666	675
	大型機動船舶 Major mechanized vessels	142	135
	充氣式橡皮艇 Inflatable boats	186	179
	快艇 Speed boats	62	71
	駁船 Lighters	25	25
	泳灘船艇 Beach crafts	170	182
	泳灘救生筏 Beach rafts	38	38
	小艇 Dinghies	43	45
H.	大型機動船舶的可用率 Availability of major mechanized vessels	88.0%	87.9%
I.	大型機動船舶保養費總額 (百萬元) Total maintenance cost of major mechanized vessels (\$M)	<u>01/02</u> 129.7	<u>02/03</u> 141.8
J.	大型機動船舶平均保養費 (百萬元) Average maintenance cost of major mechanized vessels (\$M)	0.89	0.94
K.	定期維修合約安排 Maintenance term contract arrangements	<u>2002</u>	<u>2003</u>
	i. 船舶總數 i. Total number of vessels	81	77
	ii. 主機總數 ii. Total number of main engines	148	178
L.	政府船艇肇事個案 Accidents involving Government Craft	<u>2002</u>	<u>2003</u>
	i. 肇事個案數目 i. Number of government vessels involved	35	24
	ii. 工傷意外傷亡數目 ii. Number of casualties in industrial accidents		
	a. 船塢員工 a. Dockyard staff	5	7
	b. 船員 b. Crew	7	14
	iii. 因工傷損失人-日總數 iii. Number of man-days lost		
	a. 船塢員工 a. Dockyard staff	127	225
	b. 船員 b. Crew	174	272

表 26 – 續
TABLE 26 – Cont'd

M. 參加職業安全及健康課程的人數

Number of Attendees to Occupational Safety and Health Training Courses (OSHC)

課程類別	Type of Training Course	2003
1. 職業安全健康局舉辦	Organized by the OSHC	41
2. 政府船隊科工業安全組舉辦	Organized by the Industrial Safety Section, GFD	119
3. 其他	Others	34

N. 以 2003 年 12 月 31 日計算政府船艇調配情況

Deployment of Manned Government Vessels as at 31 December 2003

調配 Deployment	泳灘 船艇 Beach Crafts	泳灘 救生筏 Beach Rafts	小艇 Dinghies	充氣式 橡皮艇 Inflatable Boats	駁船 Lighters	大型機動 船舶 Major Mechaniz ed Vessels	快艇 Speed Boats	總數 Total	大型機動船 平均可用率 Average Availability of Major Mechanized Vessel (%)
漁農自然護理署 AFCD	-	-	10	3	-	2	9	24	93.8
醫療輔助隊 AMS	-	-	-	1	-	-	-	1	-
民眾安全服務處 CAS	-	-	2	8	-	-	-	10	-
土木工程署 CED	-	-	-	-	-	3	-	3	90.8
懲教署 CSD	-	-	-	-	-	2	-	2	92.3
香港海關 C&ED	-	-	-	9	-	8	6	23	87.1
環境保護署 EPD	-	-	-	1	-	1	-	2	95.5
消防處 FSD	-	-	-	17	-	10	8	35	91.1
衛生署 DH	-	-	2	-	-	3	-	5	90.9
香港警務處 HKPF	-	-	2	60	2	55	37	156	87.4
入境事務處 Imm D	-	-	-	-	-	7	-	7	88.3
康樂及文化事務署 LCSD	182	38	14	74	-	-	2	310	-
海事處 MD	-	-	12	3	23	42	8	88	89.2
水務署 WSD	-	-	3	3	-	2	1	9	100
總數 Total	182	38	45	179	25	135	71	675	87.9

註釋: - 不適用

Note: - Not applicable

資料來源: 政府船隊科

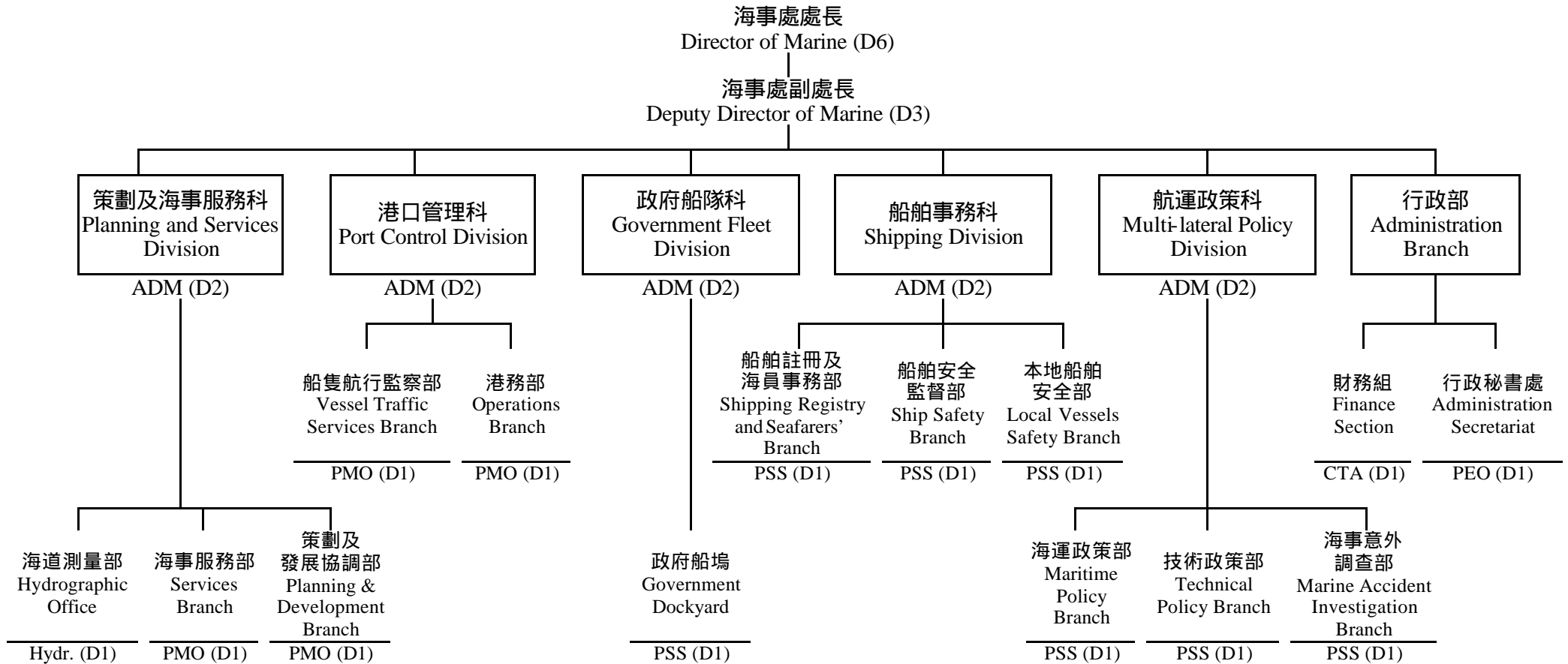
Data Source: Government Fleet Division

附 錄

Appendices

附錄 A
APPENDIX A

海事處組織架構圖
Marine Department Organization Chart



Page A1

- | | | | | |
|---------|---------------|------------------------------|----------------|---------------------------|
| 圖列 | ADM = 海事處助理處長 | Assistant Director of Marine | Hydr. = 海道測量師 | Hydrographer |
| Legend: | PMO = 首席海事主任 | Principal Marine Officer | CTA = 總庫務會計師 | Chief Treasury Accountant |
| | PSS = 首席驗船主任 | Principal Surveyor of Ships | D6 = 首長薪級第 6 點 | Directorate Level 6 |
| | PEO = 首席行政主任 | Principal Executive Officer | D3 = 首長薪級第 3 點 | Directorate Level 3 |
| | | | D2 = 首長薪級第 2 點 | Directorate Level 2 |
| | | | D1 = 首長薪級第 1 點 | Directorate Level 1 |

附錄 B
APPENDIX B

2003 年 12 月 31 日海事處編制和實際員額
Marine Department Establishment and Strength as at 31.12.2003

		編制 Establishment	實際員額 Strength
首長級人員			
<u>Directorate Officers</u>			
海事處處長	Director of Marine (D6)	1	1
海事處副處長	Deputy Director of Marine (D3)	1	1
海事處助理處長	Assistant Director of Marine (D2)	5 + 2*	4
首席海事主任	Principal Marine Officer (D1)	4	4
首席驗船主任	Principal Surveyor of Ships (D1)	7	7
首席行政主任	Principal Executive Officer (D1)	1 + 1*	2
總庫務會計師	Chief Treasury Accountant (D1)	1	1
海道測量師	Hydrographer (D1)	1	1
部門職系			
<u>Departmental Grade</u>			
高級海事主任	Senior Marine Officer	18	18
海事主任	Marine Officer	40	39
海事監督	Marine Controller	13	13
助理海事監督	Assistant Marine Controller	50	49
高級船舶安全主任	Senior Shipping Safety Officer	1	1
船舶安全主任	Shipping Safety Officer	8	7
高級驗船主任	Senior Surveyor of Ships	16	16
驗船主任	Surveyor of Ships	25	24
高級助理船務主任	Senior Assistant Shipping Master	19	19
助理船務主任	Assistant Shipping Master	2	2
一級海事督察	Marine Inspector I	77	77
二級海事督察	Marine Inspector II	111	109
輔航設備監督	Superintendent of Aids to Navigation	1	1
助理輔航設備監督	Assistant Superintendent of Aids to Navigation	2	2

附錄 B - 續
APPENDIX B - Cont'd

		編制 Establishment	實際員額 Strength
總驗船督察	Chief Ship Inspector	2	2
高級驗船督察	Senior Ship Inspector	11	11
驗船督察	Ship Inspector	23	23
助理驗船督察	Assistant Ship Inspector	1	1
小輪船員督導員	Launch Crew Supervisor	4	4
高級小輪船長	Senior Launch Master	78	73
小輪船長	Launch Master	58	56
小輪助理員	Launch Assistant	253	253
高級小輪大偈	Senior Launch Mechanic	3	2
小輪大偈	Launch Mechanic	1	1
海事工業安全督察	Marine Industrial Safety Inspector	8	8
測量服務員	Surveyor Attendant	1	1
一般職系			
<u>General Grade</u>			
高級統計師	Senior Statistician	1	1
一級統計主任	Statistical Officer I	1	1
二級統計主任 / 見習統計主任	Statistical Officer I / Student Statistical Officer	1	1
高級庫務會計師	Senior Treasury Accountant	1	1
庫務會計師	Treasury Accountant	3 +1*	4
高級會計主任	Senior Accounting Officer	1	1
一級會計主任	Accounting Officer I	1	1
二級會計主任	Accounting Officer II	3	3
總行政主任	Chief Executive Officer	1	1
高級行政主任	Senior Executive Officer	2 +1*	2
一級行政主任	Executive Officer I	6	6
二級行政主任	Executive Officer II	2	2
高級法定語文主任	Senior Official Languages Officer	1	1
一級法定語文主任	Official Languages Officer I	2	2
二級法定語文主任	Official Languages Officer II	2	1

附錄 B - 續
APPENDIX B - Cont'd

		編制 Establishment	實際員額 Strength
製圖師 /	Cartographer /	1	1
助理製圖師	Assistant Cartographer		
高級電子工程師	Senior Electronics Engineer	1	1
電子工程師 /	Electronics Engineer /	2	2
助理電子工程師	Assistant Electronics Engineer		
高級土地測量師	Senior Land Surveyor	1	1
土地測量師 /	Land Surveyor /	2	2
助理土地測量師	Assistant Land Surveyor		
電子督察	Electronics Inspector	1	1
助理空氣調節督察	Assistant Air-Conditioning Inspector	1	1
首席技術主任(製圖)	Principal Technical Officer (Cartographic)	1	1
高級技術主任(製圖)	Senior Technical Officer (Cartographic)	3	3
技術主任(製圖) /	Technical Officer (Cartographic) /	6	6
見習技術主任(製圖)	Technical Officer Trainee (Cartographer)		
高級文書主任	Senior Clerical Officer	7	7
文書主任	Clerical Officer	29 +1*	29
助理文書主任	Assistant Clerical Officer	71 +1*	71
文書助理	Clerical Assistant	123	121
辦公室助理員	Office Assistant	13	12
高級物料供應主任	Senior Supplies Officer	1	1
物料供應主任	Supplies Officer	1	1
助理物料供應主任	Assistant Supplies Officer	1	1
高級物料供應員	Senior Supplies Supervisor	1	1
一級物料供應員	Supplies Supervisor I	3	3
二級物料供應員	Supplies Supervisor II	11	11
助理物料供應員	Supplies Assistant	3	3
物料供應服務員	Supplies Attendant	4	4
高級私人秘書	Senior Personal Secretary	1	0
一級私人秘書	Personal Secretary I	6	4
二級私人秘書	Personal Secretary II	21	23

附錄 B - 續
APPENDIX B - Cont'd

		編制 Establishment	實際員額 Strength
打字督導	Supervisor of Typing Services	1	1
機密檔案室助理	Confidential Assistant	1	1
繕校員	Calligraphist	2	2
打字員	Typist	8	8
汽車司機	Motor Driver	4	4
共通職系			
<u>Common Grade</u>			
總技術主任	Chief Technical Officer	3	3
高級電氣督察	Senior Electrical Inspector	2	2
電氣督察	Electrical Inspector	4	4
助理電氣督察	Assistant Electrical Inspector	3	2
高級機械督察	Senior Mechanical Inspector	7	6
機械督察	Mechanical Inspector	12	12
助理機械督察	Assistant Mechanical Inspector	6	4
首席測量主任(輪機)	Principal Survey Officer (Engineering)	1	1
高級測量主任(輪機)	Senior Survey Officer (Engineering)	5	5
測量員(輪機) / 見習測量員(輪機)	Survey Officer (Engineering) / Survey Officer Trainee (Engineering)	13	13
一級監工	Works Supervisor I	14	14
二級監工	Works Supervisor II	7	7
高級技工	Senior Artisan	41	40
技工	Artisan	124	120
丈量員	Chainman	4	4
產業看管長	Head Property Attendant	1	1
產業看管員	Property Attendant	6	6
二級工人	Workman II	37	35
總計	Total	1496 + 7* =====	1467 =====

註釋: * 編外職位

Note: *Supernumerary post

附錄 C
APPENDIX C

2003 年海事處訓練組課程
Training Courses Conducted by Training Section, Marine Department in 2003

	<u>課程名稱</u> Course Title	<u>學期</u> Duration	<u>*參加學員</u> *Target Participants	<u>班級數目</u> Number of Classes	<u>學員數目</u> Number of Participants
1.	電子海圖顯示及資料系統 Electronic Chart Display and Information System ORCA	1 day	MI II, MO, Crew	10	72
2.	海上油污電腦模擬 Oil Spill Model Course	2 days	SMO, MO, SASM, MI II	1	10
3.	漁農自然護理署 – 海上油污訓練課程 Oil Pollution Training Course for AFCD	1 day	AFCD	1	15
4.	油上油污應變-基本課程 Oil Spill Response – Basic Course	3 days	MI I, MI II	1	16
5.	民安隊 – 海上油污訓練課程 CAS - Oil Pollution Training Programme	2 days	CAS	2	35
6.	康文署 – 海上油污訓練 LCSD Oil Pollution Training Course	1 day	LCSD	1	20
7.	全球海上遇險及安全系統 (通用操作員證書 – 縮短課程) GMDSS (General Operators Certificate - Abridged Course)	5 days	MO, SMO	2	10
8.	全球海上遇險及安全系統 (限用操作員證書 - 縮短課程) GMDSS (Restricted Operator's Certificate -Abridged Course)	4 days	MC, AMC	5	29
9.	全球海上遇險及安全系統基本課程 – 海事 處驗船主任 GMDSS Introductory Course for MD Surveyors	2 days	Surveyors	2	12
10.	香港水域雷達操作員課程 Radar Operator Course for Hong Kong Waters	7 days	GD, C&E, SLM, LM, MD, FSD	4	25
11.	海事督察訓練課程 MI Training Course	80 days	MI II	1	4
12.	海事督察增強課程 MI II Enhancement Course	50 days	MI II	3	26
13.	基本海上搜救計劃課程 Basic Maritime SAR Planning Course	5 days	MO	1	4
14.	船隻航行監察模擬課程 VTS Simulator Course	5 days	MC, AMC	7	26
15.	海事主任船隻航行監察基本課程 VTS Introductory Course for MO	2 days	MO	1	4

附錄 C – 續
APPENDIX C – Cont'd

	課程名稱 <u>Course Title</u>	學期 <u>Duration</u>	*參加學員 <u>*Target Participants</u>	班級數目 <u>Number of Classes</u>	學員數目 <u>Number of Participants</u>
16.	船隻交通服務操作員增修課程(中國官員) VTS Operator Enhancement Course for Chinese Officials	10 Days	CHI (VTS)	2	11
17.	船隻航行監察導師課程(中國及澳門官員) VTS Instructor Course for Chinese and Macau Officials	10 Days	CHI (VTS), MAC (VTS)	3	13
18.	船隻航行監察督導員課程 VTS Supervisor Course	2 Days`	MC	4	8
19.	個人品性訓練課程 Personal Attribute	1 day	MC, AMC	7	25
20.	增進執行強制性清潔條例人員訓練課程 Train The Trainers Course on Step Up Enforcement of Cleanliness Offences	2 days	SMO, MO, MC, SASM, AMC, MI I, MI II	1	16
21.	港口設備保安人員課程 Port Facility Security Officer Course	3 days	SMO, MO, PFSO	3	73
22.	港口設備保安人員工作坊 Port Facility Security Officer Workshop	2 days	SMO, MO, PFSO	2	34
23.	管理人員課程 ISPS Administrator Course	5 days	DD, AD, GM, SMO, MO, S, SS	1	24
	總數 Total			<u>65</u>	<u>512</u>

***參加學員*Target Participants**

AD	- 助理海事處處長	Assistant Director of Marine	LM	- 本地船主	Local Master
AFCD	- 漁農自然護理署	Agriculture Fisheries and Conservation Department	MAC(VTS)	- 澳門(船隻航行)官員	Macau (VTS) Personnel
AMC	- 助理海事督察	Assistant Marine Controller	MC	- 海事監督	Marine Controller
CA	- 文書助理	Clerical Assistant	MD	- 海事處	Marine Department
C&E	- 香港海關	Customs and Excise Department	MI I	- 一級海事督察	Marine Inspector I
CAS	- 民眾安全服務處	Civil Aid Service	MI II	- 二級海事督察	Marine Inspector II
CO	- 文書主任	Clerical Officer	MO	- 海事主任	Marine Officer
Crew	- 水手	Crew	PFSO	- 港口設備保安人員	Port Facility Security Officer
CHI (VTS)	- 中國(船隻航行)官員	Chinese (VTS) Personnel	S	- 驗船主任	Surveyor
DD	- 海事處副處長	Dupty Director of Marine	SLM	- 高級本地船主	Senior Local Master
FSD	- 消防處	Fire Service Department	SS	- 高級驗船主任	Senior Surveyor
GD	- 政府船塢	Government Dockyard	SASM	- 高級助理船務主任	Senior Assistant Shipping Master
GM	- 總經理	General Manager	SMO	- 高級海事主任	Senior Marine Officer
LCSD	- 康樂及文化事務署	Leisure and Cultural Services Department			

附錄 D
APPENDIX D

2003 年海事處訪客
Visitors to the Marine Department, 2003

年內，本處曾經接待以下訪客：

During the year under review, the Department hosted the following visitors:-

1. 公務員事務局局長王永平先生，G.B.S.，J.P。
The Hon Joseph W.P. WONG, G.B.S., J.P., Secretary for the Civil Service.
2. 日本福岡市港灣局振興課系長結城康之先生率領的代表團。
A delegation led by Mr. Yasuyuki Yuki, Manager, Port Promotion Section of Hakata Port & Harbour Bureau, Japan.
3. 美利堅合眾國空軍部美國防部空軍戰爭學院 19 人代表團。
A delegation of 19 members from the U.S. Department of Defence Air War College, Department of the Air Force, U.S.A.
4. 烏克蘭總統列昂尼德 達尼洛維奇 庫奇馬先生及其代表團。
Mr. Leonid Danylovyh KUCHMA, President of Ukraine and his delegation.
5. 日本海事協會常務理事兼技師長上田德先生、本部港口國監督和船旗國品質管理主管 Hayashi 先生和香港事務所所長關根隆先生。
Mr. N. Ueda, Managing Director & Chief Surveyor of Class NK; Mr. Hayashi, Manager in charge of Port State Control and FSQC in NK Head Office and Mr. Takashi Sekine, General Manager, NK Hong Kong Office.
6. 荷蘭王國交通、公共工程和水資源大臣 Karla Peijs 女士及其代表團。
Mrs. Karla Peijs, Minister of Transport, Public Works and Water Management and her delegation.
7. 上海市港口管理局副局長李文輝先生率領的 40 人代表團。
A delegation of 40 members led by Mr. LI Wenhui, Deputy Director, Shanghai Municipal Port Administration Bureau.
8. 油尖旺青年社代表團。
A delegation from the Yau Tsim Mong Youths Society.
9. 中國南通市事業管理協會南通市海事、船務等相關單位考察團。
A delegation from marine and shipping related units of Nantong Municipal, Nanton Municipal Institution Management Association, China.
10. 上海市港口管理局副局長顧富根先生率領的八人代表團。
A delegation of 8 members led by Mr. GU Fugen, Deputy Director of Shanghai Municipal Port Administration Bureau.
11. 大韓民國釜山地方海洋水產?? 長 Lee Jae-gyoon 先生率領的代表團。
A delegation led by Mr. Jae Gyoon Lee, Administrator of Busan Regional Maritime Affairs and Fisheries Office, Republic of Korea.

附錄 E
APPENDIX E

2003 年新訂海事法
New Maritime Legislation, 2003

列載二零零三年一月一日至二零零三年十二月三十一日通過有關海處工作及船務法例?

The following legislation affection the work of the Department and Shipping was enacted during the year under review (1.1.2003 – 31.12.2003):

法例名稱	Title	法例編號 L.N. No.
《 2002 年領港(費用)(修訂)令 (2002 年第 234 號法律公告)2003 年(生效日期)公告》	Pilotage (Dues)(Amendment) Order 2002 (L.N.234 of 2002) (Commencement) Notice 2003	41/2003
《 2002 年船舶及港口管制規(修訂附表 3 及 7)公告 (2002 年第 123 號法律公告)2003 年(生效日)公告》	Shipping and Port Control Regulations (Amendment of Third and Seventh Schedules) Notice 2002 (L.N. 123 of 2002)(Commencement) Notice 2003	57/2003
《2003 年港口管制(公眾貨物裝卸區)令》	Port Control (Public Cargo Working Area) Order 2003	169/2003

附錄 F
APPENDIX F

2003 年在香港註冊的船舶
Ships Registered in Hong Kong, 2003

Name of Ship	Ship Type	Gross Tonnage	Join Date	Official No.
TAMAR	BULK CARRIER	18003	2-Jan-2003	HK-0984
CONVENIENCE CONTAINER	CONTAINER CARRIER	17652	3-Jan-2003	HK-0987
OCEAN BENIGNITY	GENERAL CARGO	6655	3-Jan-2003	HK-0969
KOON WOON	SAILING YACHT	31	3-Jan-2003	HK-092003
NORGAS SONOMA	LPG/ETHYLENE/VCM CARRIER	8720	6-Jan-2003	HK-0950
TRADE HOPE	CONTAINER SHIP	4811	6-Jan-2003	HK-0983
BAO AN	GENERAL CARGO	3995	7-Jan-2003	HK-0988
DA LI	CONTAINER	5967	8-Jan-2003	HK-0977
OCEAN AUSPICES	GENERAL CARGO	6653	8-Jan-2003	HK-0968
NORGAS SAILOR	LIQUEFIED GAS TANKER	5696	17-Jan-2003	HK-0957
LUCIE DELMAS	RO-RO CARGO SHIP	35748	18-Jan-2003	HK-0995
LAURA DELMAS	RO-RO CARGO SHIP	35748	18-Jan-2003	HK-0996
J. REAL	GENERAL CARGO	7090	20-Jan-2003	HK-0989
FU CHUN	CONTAINER CARRIER	8078	21-Jan-2003	HK-0966
C. DREAM	OIL CARRIER	159397	21-Jan-2003	HK-0990
TIEN HAU	GENERAL CARGO	11478	22-Jan-2003	HK-0985
PAUL OLDENDORFF	BULK CARRIER	21185	23-Jan-2003	HK-0991
TOP CARRIER	BULK CARRIER	26098	28-Jan-2003	HK-0993
TOP PIONEER	BULK CARRIER	1820036	5-Feb-2003	HK-0970
ATLANTIC TRADER	BULK CARRIER	17377	10-Feb-2003	HK-0992
TRADE WORLDER	CONTAINER SHIP	4811	11-Feb-2003	HK-0982
FEDERAL KUMANO	BULK CARRIER	20661	12-Feb-2003	HK-0994
SEABORNE	OIL TANKER	57529	12-Feb-2003	HK-0954
HAI KANG	BULK CARRIER	38520	14-Feb-2003	HK-0981
STEWART ISLAND	BULK CARRIER	17380	21-Feb-2003	HK-1001
YEUNG CHAU	TUG	295	21-Feb-2003	HK-0953
HAPPY CLOUD	CONTAINER SHIP	3970	21-Feb-2003	HK-1004
J. BETTER	GENERAL CARGO	7989	24-Feb-2003	HK-0986
LING ZHOU	OIL TANKER	3967	1-Mar-2003	HK-1011
DYNA AUK	BULK CARRIER	77336	2-Mar-2003	HK-1000

附錄 F – 續
APPENDIX F – Cont'd

Name of Ship	Ship Type	Gross Tonnage	Join Date	Official No.
NORGAS PETALUMA	LPG/ ETHYLENE/ VCM CARRIER	8720	4-Mar-2003	HK-0975
J. TONG	GENERAL CARGO	7090	8-Mar-2003	HK-1018
ORCHID BAY	BULK CARRIER	16978	11-Mar-2003	HK-0999
FORTUNE BRIGHT	BULK CARRIER	29862	17-Mar-2003	HK-1014
CSK VALIANT	OIL TANKER	58153	18-Mar-2003	HK-0997
SAGA WAVE	GENERAL CARGO	29235	19-Mar-2003	HK-1021
SAGA TIDE	GENERAL CARGO	29235	19-Mar-2003	HK-1022
BOW WAVE	OIL/MOLASSES/ CHEMICAL CARRIER	5342	20-Mar-2003	HK-1002
MARITIME JINGAN	OIL AND CHEMICAL TANKER	29211	20-Mar-2003	HK-0973
SAGA JANDAIA	GENERAL CARGO	29729	21-Mar-2003	HK-1023
BOW WIND	OIL/MOLASSES/ CHEMICAL CARRIER	5342	25-Mar-2003	HK-102003
HARU VERDY	REFRIGERATED/ VEHICLES CARRIER	7316	25-Mar-2003	HK-1005
TRIUMPH	BULK CARRIER	23257	26-Mar-2003	HK-1010
OCEAN GALAXY	BULK CARRIER	27011	28-Mar-2003	HK-1027
VALOR	BULK CARRIER	25190	31-Mar-2003	HK-1009
ATLANTIC HARMONY	BULK CARRIER	19908	31-Mar-2003	HK-1013
CHINESE EAGLE	BULK CARRIER	25907	31-Mar-2003	HK-1029
ANSAC HARMONY	BULK CARRIER	17429	1-Apr-2003	HK-1012
NEW SUN	CONTAINER SHIP	897	3-Apr-2003	HK-0947
VALIANT	BULK CARRIER	25190	7-Apr-2003	HK-1008
TOP TRADER	BULK CARRIER	35890	8-Apr-2003	HK-1047
RED TULIP	BULK CARRIER	39746	10-Apr-2003	HK-1020
STOLT ALLIANCE	OIL/MOLASSES/ CHEMICAL CARRIER	7171	10-Apr-2003	HK-120032
GREAT AMBITION	BULK CARRIER	38426	14-Apr-2003	HK-1043
STARTEC	BULK CARRIER	2720031	15-Apr-2003	HK-1007
ELISA DELMAS	CONTAINER CARRIER	16916	22-Apr-2003	HK-1044
PENG LAI	BULK CARRIER	17061	22-Apr-2003	HK-1050
MCC VANTAGE	CONTAINER & GEN. CARGO	8654	24-Apr-2003	HK-1057
NORGAS ALAMEDA	LPG/ETHYLENE/VCM CARRIER	8720	28-Apr-2003	HK-0976

附錄 F – 續
APPENDIX F – Cont'd

Name of Ship	Ship Type	Gross Tonnage	Join Date	Official No.
BOW DE RICH	CHEMICAL TANKER	6861	29-Apr-2003	HK-1052
FORTUNE GLORY	BULK CARRIER	29862	29-Apr-2003	HK-1056
OOCL SHENZHEN	CONTAINER	89097	29-Apr-2003	HK-1015
SIR IVOR	LPG CARRIER	4508	30-Apr-2003	HK-1053
ERRADALE	BULK CARRIER	82701	30-Apr-2003	HK-1054
LAMMA	TUG	231	5-May-2003	HK-1019
J. LUCKY	BULK/LUMBER CARRIER	16721	6-May-2003	HK-1059
WIN GLORY	GENERAL CARGO	5922	6-May-2003	HK-1058
ARISBE	BULK CARRIER	19602	6-May-2003	HK-1060
RONG FENG	CONTAINER CARRIER	6177	10-May-2003	HK-1072
GREAT CONCORD	BULK CARRIER	15983	14-May-2003	HK-1062
HEBEI COURAGE	ORE/BULK/OIL CARRIER	42009	14-May-2003	HK-1067
TOP LEADER	BULK CARRIER	38646	15-May-2003	HK-1046
NEW MILLENNIUM	PRODUCT CARRIER/ASPHALT TANKER	5072	15-May-2003	HK-1071
HCH MOUNTAIN	GENERAL CARGO SHIP	5540	16-May-2003	HK-1070
CHINESE PHOENIX	BULK CARRIER	35890	16-May-2003	HK-1066
OOCL MONTREAL	CONTAINER SHIP	55994	19-May-2003	HK-1016
CAPE OCEANIA	BULK CARRIER	77132	20-May-2003	HK-120031
GREAT HARMONY	BULK CARRIER	15983	20-May-2003	HK-1063
BATU	BULK/ORE CARRIER	24987	20-May-2003	HK-1078
ATLAS	BULK CARRIER	73116	20-May-2003	HK-1076
TAUROA POINT	BULK / LUMBER CARRIER	17075	21-May-2003	HK-1068
UNI-ACCORD	CONTAINER CARRIER	14807	22-May-2003	HK-1080
TRADE HALI	CONTAINER CARRIER	8628	22-May-2003	HK-1083
OOCL MELBOURNE	CONTAINER CARRIER	34610	26-May-2003	HK-1087
SUNLIGHT VENTURE	OIL TANKER	39272	28-May-2003	HK-1069
SEADUCTION	PLEASURE YACHT	38.1	31-May-2003	HK-1074
ALIANTHOS	BULK CARRIER	36074	2-Jun-2003	HK-1073
SHINYO GUARDIAN	OIL TANKER	147421	5-Jun-2003	HK-1088
OCEAN QUEST	BULK CARRIER	17430	5-Jun-2003	HK-1077

附錄 F – 續
APPENDIX F – Cont'd

Name of Ship	Ship Type	Gross Tonnage	Join Date	Official No.
VENTURE SPIRIT	OIL TANKER	159456	5-Jun-2003	HK-1065
CELESTRIA II	PLEASURE YACHT	55	6-Jun-2003	HK-1095
TONG XIN QUAN	CONTAINER SHIP	4165	6-Jun-2003	HK-1085
TERNAL ATHENA	BULK CARRIER	26395	9-Jun-2003	HK-1028
AMITY	YACHT	67.43	12-Jun-2003	HK-1079
DIAS	BULK CARRIER	73116	13-Jun-2003	HK-1075
SEVERN	BULK / LUMBER CARRIER	17061	17-Jun-2003	HK-1093
NAN SHAN	BULK CARRIER	23536	17-Jun-2003	HK-1084
GREAT PROSPERITY	BULK CARRIER	38426	20-Jun-2003	HK-1061
HCH RIVER	GENERAL CARGO	4195	20-Jun-2003	HK-1081
DERWENT	GENERAL CARGO	17590	23-Jun-2003	HK-1094
KARUBA IV	SAILING & MOTOR YACHT	39.21	25-Jun-2003	HK-1099
MARITIME MAISIE	OIL AND CHEMICAL TANKER	29211	26-Jun-2003	HK-1048
CSK FORTUNE	BULK CARRIER	88856	27-Jun-2003	HK-1049
OOCL LONG BEACH	CONTAINER	89097	30-Jun-2003	HK-1017
SPORTSQUEEN	BULK CARRIER	12666	2-Jul-2003	HK-1102
MISOLA SHINE	LOG / BULK CARRIER	19887	3-Jul-2003	HK-1090
SINO PIONEER	BULK CARRIER	16834	7-Jul-2003	HK-1104
COLUMBIA 108	OIL CARRIER	296	7-Jul-2003	HK-1106
TAP MUN	TUG	231	8-Jul-2003	HK-120030
JOSCO NANJING	BULK CARRIER	27162	8-Jul-2003	HK-1096
ASIAN COMPASS	GENERAL CARGO	4157	9-Jul-2003	HK-1092
NORD SEA	PRODUCT TANKER	28059	10-Jul-2003	HK-1091
YONGXING	GENERAL DRY CARGO SHIP	18207	11-Jul-2003	HK-1107
RONG FENG	CONTAINER CARRIER	6177	14-Jul-2003	HK-1072
FREYA	GENERAL CARGO	5601	14-Jul-2003	HK-1097
SAINTY NO. 1	BARGE	10518	14-Jul-2003	HK-1045
ASTRON SPIRIT	BULK CARRIER	36353	17-Jul-2003	HK-1105
NORGAS SHASTA	LPG/ETHYLENE/VCM CARRIER	9691	22-Jul-2003	HK-1041
TOP SUCCESS	BULK CARRIER	26094	24-Jul-2003	HK-1113

附錄 F – 續
APPENDIX F – Cont'd

Name of Ship	Ship Type	Gross Tonnage	Join Date	Official No.
ORIENT BRAVE	ROLL ON ROLL OFF CARGO SHIP	8649	29-Jul-2003	HK-1112
VICTORIA LOUISE	LPG CARRIER	3508	30-Jul-2003	HK-1055
SHENZHEN SEA	BULK CARRIER	34928	31-Jul-2003	HK-1111
DYVI ADRIATIC	CAR CARRIER	39187	1-Aug-2003	HK-1109
DYVI BALTIC	CAR CARRIER	39043	1-Aug-2003	HK-1110
TRANSIT	BULK CARRIER	7082003	6-Aug-2003	HK-1122
PRIORY BAY	BULK/LUMBER CARRIER	15884	8-Aug-2003	HK-0927
BOTANY TRUST	OIL / CHEMICAL CARRIER	5483	11-Aug-2003	HK-1114
BLUE OCEAN	CONTAINER SHIP	9949	12-Aug-2003	HK-1100
SHINYO INTEGRITY	BULK CARRIER	26070	13-Aug-2003	HK-1116
BLACK FOREST	LOG / BULK CARRIER	19887	18-Aug-2003	HK-1118
MINERAL AZALEA	BULK CARRIER	85386	19-Aug-2003	HK-1117
LAKE CAMELLIA	BULK CARRIER	39126	19-Aug-2003	HK-1006
ISLAND EXPLORER	BULK/LUMBER CARRIER	17130	19-Aug-2003	HK-0434
ANHUI HOPE	GENERAL CARGO	13123	22-Aug-2003	HK-1108
KAEDI	CONTAINER SHIP	26061	29-Aug-2003	HK-1082
HEBEI PRINCE	BULK CARRIER	40483	5-Sep-2003	HK-1128
APOLLON	BULK CARRIER	36559	10-Sep-2003	HK-1126
COLUMBIA 118	OIL CARRIER	296	11-Sep-2003	HK-1135
HEBEI PRINCESS	BULK CARRIER	38606	11-Sep-2003	HK-1129
IWANUMA MARU	CARGO SHIP	39199	16-Sep-2003	HK-1140
HEBEI RAINBOW	BULK CARRIER	48010	22-Sep-2003	HK-1130
PYRAMID LIGHT	BULK CARRIER	13706	22-Sep-2003	HK-0577
GOLDEN CLOUD	CONTAINER CARRIER	5354	26-Sep-2003	HK-1134
PACIFIC RUBY	OIL CARRIER	146455	29-Sep-2003	HK-1142
ACACIA	CONTAINER CARRIER	6094	30-Sep-2003	HK-1125
SOUTHERN BELLE	CHIP CARRIER	34739	30-Sep-2003	HK-0427
SUN SEA	BULK CARRIER	21062	2-Oct-2003	HK-1145
TOP RELIANCE	BULK CARRIER	1820036	3-Oct-2003	HK-1124
HIGHLAND LIGHT	BULK CARRIER	13706	6-Oct-2003	HK-0743
SHAO SHAN 1	BULK CARRIER	23444	8-Oct-2003	HK-0998

附錄 F – 續
APPENDIX F – Cont'd

Name of Ship	Ship Type	Gross Tonnage	Join Date	Official No.
ASANO NO. 18	GENERAL CARGO SHIP (CEMENT CARRIER)	6815	9-Oct-2003	HK-1123
LOWLANDS PATRASCHÉ	BULK CARRIER	28553	9-Oct-2003	HK-1120
BLACK MOLLY II	SAILING YACHT	86	10-Oct-2003	HK-1146
BOTANY TREASURE	OIL/CHEMICAL CARRIER	5483	10-Oct-2003	HK-1149
PRO VICTOR	OIL TANKER	17018	15-Oct-2003	HK-1144
UNIQUE PRIVILEGE	OIL CARRIER	56285	20-Oct-2003	HK-1089
RAFFLES LIGHT	BULK CARRIER	14704	20-Oct-2003	HK-0852
HAI FENG SHAN	DEDICATED CONTAINER CARRIER	3541	20-Oct-2003	HK-1166
OCEAN CRYSTAL	BULK CARRIER	38372	22-Oct-2003	HK-120035
LAKE SEQUOIA	BULK CARRIER	39126	23-Oct-2003	HK-1040
NORGAS NAPA	LPG/ETHYLENE/VCM CARRIER	9691	24-Oct-2003	HK-1042
STOLT AYAME	OIL/MOLASSES/ CHEMICAL TANKER	4987	27-Oct-2003	HK-1172
NORCA	OIL & CHEMICAL CARRIER	28517	28-Oct-2003	HK-1156
ASIAN ROSALIE	GENERAL CARGO	7762	29-Oct-2003	HK-1163
CELOSIA	OIL/MOLASSES/ CHEMICAL	4751	30-Oct-2003	HK-1143
PACIFIC FALCON	RO-RO CARGO/CONTAINER/ VEHICLES	8132	30-Oct-2003	HK-120036
SALAMANCA	BULK CARRIER	26084	30-Oct-2003	HK-1121
ASIAN ROSE	GENERAL CARGO	7633	31-Oct-2003	HK-1164
JI FENG	CONTAINER CARRIER	5601	31-Oct-2003	HK-1174
OLYMPIC	OIL TANKER	36953	1-Nov-2003	HK-1179
BERGE SIGVAL	OIL TANKER	160214	3-Nov-2003	HK-1183
WORLD LUNA	OIL TANKER	158993	4-Nov-2003	HK-1170
NORD OCEAN	BULK CARRIER	30058	4-Nov-2003	HK-1180
FAREAST SUNNY	BULK CARRIER	23270	4-Nov-2003	HK-1150
NILE	OIL TANKER	153407	5-Nov-2003	HK-1168
BOLIVAR LIGHT	BULK CARRIER	13865	5-Nov-2003	HK-0567
FAREAST GLORY	BULK CARRIER	11435	5-Nov-2003	HK-1139
NORD BULKER	BULK CARRIER	29357	7-Nov-2003	HK-1151

附錄 F – 續
APPENDIX F – Cont'd

Name of Ship	Ship Type	Gross Tonnage	Join Date	Official No.
ASIAN ROBIN	GENERAL CARGO	7657	10-Nov-2003	HK-1165
MISTERA	SLOOP RIGGED YACHT	43	10-Nov-2003	HK-120033
NOBLE LIGHT	BULK CARRIER	14743	11-Nov-2003	HK-0562
TONG DE QUAN	CONTAINER SHIP	4165	11-Nov-2003	HK-1186
WORLD LUCK	OIL TANKER	158993	13-Nov-2003	HK-1169
SEA FORTUNE	OIL TANKER	159730	13-Nov-2003	HK-1201
XIANG KUN	CONTAINER CARRIER	8635	13-Nov-2003	HK-1160
XIANG QIAN	CONTAINER CARRIER	8635	13-Nov-2003	HK-1159
FREESIA	CHEMICAL/OIL CARRIER	5384	14-Nov-2003	HK-1127
FREESIA	CHEMICAL/OIL CARRIER	5384	14-Nov-2003	HK-1127
BIG FAIR 327	TUG	22003	15-Nov-2003	HK-1193
BIG FAIR 328	TUG	22003	15-Nov-2003	HK-1194
WORLD EXPRESS	BULK/LUMBER CARRIER	17879	17-Nov-2003	HK-1157
ORIENT SAORI	BULK/LUMBER CARRIER	18866	17-Nov-2003	HK-1154
SKY HOPE	CONTAINER CARRIER	6899	17-Nov-2003	HK-1192
YIN HU	GENERAL CARGO	4409	18-Nov-2003	HK-1148
DE SHAN	BULK CARRIER	22342	20-Nov-2003	HK-1181
HEBEI TIGER	BULK CARRIER	92300	27-Nov-2003	HK-1158
DONGTAI FORTUNE	CONTAINER SHIP	10524	28-Nov-2003	HK-1182
HENG CHANG	BULK CARRIER	24953	2-Dec-2003	HK-1155
STENA VENTURE	OIL TANKER	39272	4-Dec-2003	HK-0938
MARIASPES	BULK CARRIER	22147	8-Dec-2003	HK-1208
POS AUCKLAND	BULK CARRIER	17679	10-Dec-2003	HK-1195
ORIENT CONSTELLATION	BULK CARRIER	36152	10-Dec-2003	HK-1185
WIN HONEY	GENERAL CARGO	6205	11-Dec-2003	HK-1205
PACIFIC CRYSTAL	OIL TANKER	147005	15-Dec-2003	HK-1206
SUNLIGHT VENTURE	OIL TANKER	39272	15-Dec-2003	HK-1069
NAVITEC	BULK CARRIER	19911	15-Dec-2003	HK-1132
APOLLO BAY	BULK CARRIER	17429	16-Dec-2003	HK-1173
KOTA HORMAT	CONTAINER CARRIER	13547	16-Dec-2003	HK-1178
SINHAI	BULK CARRIER	15904	17-Dec-2003	HK-1131

附錄 F – 續
APPENDIX F – Cont'd

Name of Ship	Ship Type	Gross Tonnage	Join Date	Official No.
SEIYO 18	GENERAL CARGO	6641	17-Dec-2003	HK-122003
MAIA	OIL TANKER	157878	19-Dec-2003	HK-1171
THALASSA	BULK CARRIER	39966	19-Dec-2003	HK-1212
AXIOS	BULK CARRIER	25977	22-Dec-2003	HK-1211
GEMINI FOREST	GENERAL CARGO	9340	23-Dec-2003	HK-1226
OCEAN MELODY	BULK / LUMBER CARRIER	19925	24-Dec-2003	HK-1025
PORTLAND BAY	BULK CARRIER	16960	27-Dec-2003	HK-1224
VIRGINIA FOREST	GENERAL CARGO	9340	29-Dec-2003	HK-120038
PORTLAND BAY	BULK CARRIER	16960	29-Dec-2003	HK-1224
OSG ACME	CONTAINER SHIP	7167	29-Dec-2003	HK-1225
GITTA OLDENDORFF	GENERAL CARGO	30150	29-Dec-2003	HK-1220
PAPUDO	TANKER	37290	30-Dec-2003	HK-1228

註： 如有任何查詢，請致電 2852 4421 海事處船舶註冊處。

Note: Enquiries can be directed to the Shipping Registry of the Marine Department at 2852 4421.

附錄 G
APPENDIX G

2003 年終止在香港註冊的船舶
Ships De-registered in Hong Kong, 2003

Name of Ship	Ship Type	Gross Tonnage	Closing Date	Official No.
HARTING	OIL TANKER	17018	10-Jan-03	HK-0581
HASTINGS	OIL TANKER	17018	10-Jan-03	HK-0580
HORSHAM	OIL TANKER	17018	11-Jan-03	HK-0537
OCEAN BRILLIANCY	GENERAL CARGO/CONTAINER CARRIER	13436	16-Jan-03	HK-0329
HENFIELD	OIL TANKER	17018	17-Jan-03	HK-0538
L. STAR	OIL/CHEMICAL TANKER	4509	23-Jan-03	HK-0864
GHANA STAR	CONTAINER SHIP	18145	29-Jan-03	HK-0853
MOOR LAKER	BULK CARRIER	17065	11-Feb-03	HK-0689
WORLD PLACE	BULK CARRIER	77211	19-Feb-03	HK-0216
LING XIAN	BULK CARRIER	31643	20-Feb-03	HK-0475
RHEA	GENERAL CARGO	11036	28-Feb-03	HK-0866
HALIM	GENERAL CARGO	10274	1-Mar-03	HK-0442
TAI TAM	TUG	181.57	1-Mar-03	708787
WAGLAN	TUG	181.57	1-Mar-03	708786
BORCA	BULK CARRIER	14743	3-Mar-03	HK-0779
KAI FA	CARGO SHIP	1598	4-Mar-03	HK-0738
NEW WAY	GENERAL CARGO SHIP	4327	12-Mar-03	HK-0601
STICKS	BULK CARRIER	19728	12-Mar-03	HK-0850
ORCHID BAY	BULK CARRIER	16978	24-Mar-03	HK-0999
HAI LUNG NO.2	CARGO SHIP	1391	28-Mar-03	HK-0595
WAN LUNG	CARGO SHIP	1391	28-Mar-03	HK-0596
DILIGENCE CONTAINER	CONTAINER CARRIER	6942	3-Apr-03	HK-0808
HANG CHEUNG	BULK CARRIER	20265	10-Apr-03	HK-0531
SMOOTH SEA	OIL TANKER	66841	5-May-03	HK-0599
NST CHALLENGE	BULK CARRIER	16985	12-May-03	HK-0833
OGRADY	GENERAL CARGO	6002	13-May-03	HK-0744
TAI HING HONG 8	OIL TANKER	479	15-May-03	HK-0759
XIANG LING	GENERAL CARGO SHIP	5106	15-May-03	HK-0809

附錄 G - 續
APPENDIX G - cont'd

Name of Ship	Ship Type	Gross Tonnage	Closing Date	Official No.
MAERSK TOKYO	CONTAINER SHIP	43325	16-May-03	HK-0637
MORNING LIGHT	PLEASURE CATAMARAN	48.49	19-May-03	HK-0704
MAERSK TOBA	CONTAINER SHIP	43325	23-May-03	HK-0397
MSC ALESSIA	CONTAINER SHIP	75590	24-May-03	HK-0764
SHA TIN	TUG	188.12	27-May-03	711299
TING KAU	TUG	188.12	27-May-03	711300
CONVENIENCE CONTAINER	CONTAINER CARRIER	17652	30-May-03	HK-0987
ASAKASAN	BULK CARRIER	90876	5-Jun-03	HK-0389
BOAVENTURA	CARGO SHIP	495	6-Jun-03	HK-0634
MIN FENG	CONTAINER SHIP	5819	6-Jun-03	HK-0942
ST. KATHARINEN	OIL TANKER	25202	18-Jun-03	HK-0431
SUN SEA	BULK CARRIER	34626	18-Jun-03	HK-0948
CSCL BARCELONA	CONTAINER SHIP	30024	23-Jun-03	HK-0681
CSCL GENOA	CONTAINER SHIP	30024	23-Jun-03	HK-0682
TAI KEE NO.8	WATER TANKER	116	26-Jun-03	HK-0422
OOCL CANADA	CONTAINER CARRIER	33662	4-Jul-03	HK-0309
GERALD	SAILING SLOOP	27.36	5-Jul-03	HK-0618
RONG FENG	CONTAINER CARRIER	6177	14-Jul-03	HK-1072
SHENYANG	TUG	264	28-Jul-03	HK-0791
SANTA ANA	PRODUCT TANKER	24252	29-Jul-03	HK-0775
CHINOOK	OIL TANKER	24252	30-Jul-03	HK-0746
STAR KIM	BULK CARRIER	17126	4-Aug-03	HK-0277
COREY	BULK CARRIER	21734	6-Aug-03	HK-0897
SEA EMERALD	BULK CARRIER	15813	7-Aug-03	HK-0831
TRICHORD SUCCESS	BULK CARRIER	15884	8-Aug-03	HK-0927
HENG FU	GENERAL CARGO SHIP	12501	12-Aug-03	HK-0930
ISLAND EXPLORER	BULK/LUMBER	17130	19-Aug-03	HK-0434
BETIO	BULK CARRIER	23249	22-Aug-03	HK-0839
HARMON	BULK CARRIER	31649	22-Aug-03	HK-0842

附錄 G - 續
APPENDIX G - Cont'd

Name of Ship	Ship Type	Gross Tonnage	Closing Date	Official No.
PENG CHAU	TUG	294	23-Aug-03	HK-0555
TRADE HALI	CONTAINER CARRIER	8628	25-Aug-03	HK-1083
PYRAMID LIGHT	BULK CARRIER	13706	22-Sep-03	HK-0577
DARYA SHUBH	BULK CARRIER	19354	23-Sep-03	HK-0728
UNITED PURPOSE	BULK CARRIER	26756	26-Sep-03	HK-0209
SOUTHERN BELLE	CHIP CARRIER	34739	30-Sep-03	HK-0427
MARIENVOY	BULK CARRIER	34886	2-Oct-03	HK-0488
HIGHLAND LIGHT	BULK CARRIER	13706	6-Oct-03	HK-0743
EN YUAN	GENERAL CARGO SHIP	4403	7-Oct-03	HK-0834
DARYA MA	BULK CARRIER	17770	15-Oct-03	702411
RAFFLES LIGHT	BULK CARRIER	14704	20-Oct-03	HK-0852
CHINA MERCHANT	BULK CARRIER	22145	24-Oct-03	HK-0272
HARSTAD	BULK CARRIER	16798	24-Oct-03	HK-0843
BOLIVAR LIGHT	BULK CARRIER	13865	5-Nov-03	HK-0567
DRAGON FORD 8	CHEMICAL TANKER	469	5-Nov-03	HK-0067
GRAND NOBLE	CARGO SHIP	4802	11-Nov-03	HK-0835
MALABAR LIGHT	BULK CARRIER	14743	11-Nov-03	HK-0562
SHANWEI	TUG	289	11-Nov-03	HK-0643
VES FAIR 8	TUG	174	13-Nov-03	HK-0420
FREESIA	CHEMICAL/OIL CARRIER	5384	14-Nov-03	HK-1127
FU HAI	GENERAL CARGO	5241	18-Nov-03	HK-0904
GULF NO. 12	OIL TANKER	114.81	18-Nov-03	372876
DYNA AQUARIUS	BULK CARRIER	90267	22-Nov-03	HK-0374
TAMAR	BULK CARRIER	18003	25-Nov-03	HK-0984
WEALTHY NO.18	MOTOR OIL BARGE	125	26-Nov-03	HK-0761
DOURO	PASSENGER	198	27-Nov-03	706784
MAN FAI	PASSENGER	1303.53	27-Nov-03	343841
MONDEGO	PASSENGER	198	27-Nov-03	706806
MSC BRUXELLES	CONTAINER SHIP	28892	27-Nov-03	HK-0182
SADO	PASSENGER	198	27-Nov-03	706793

附錄 G - 續
APPENDIX G - Cont'd

Name of Ship	Ship Type	Gross Tonnage	Closing Date	Official No.
TEJO	PASSENGER	198	27-Nov-03	706776
STENA VENTURE	OIL TANKER	39272	4-Dec-03	HK-0938
IONA	TANKER	22988	8-Dec-03	HK-0590
LADY ELENA	LIQUEFIED GAS CARRIER	3465	9-Dec-03	HK-0444
LADY HILDE	GAS TANKER	2998	10-Dec-03	HK-0450
LADY KATHLEEN	LIQUEFIED GAS CARRIER	3465	11-Dec-03	HK-0449
SEALNES	BULK CARRIER	19385	12-Dec-03	HK-0799
SUNLIGHT VENTURE	OIL TANKER	39272	15-Dec-03	HK-1069
GLORY SEA	OIL TANKER	75825	16-Dec-03	HK-0695
LADY MARTINE	GAS CARRIER	2998	18-Dec-03	HK-0451
MSC BEIJING	CONTAINER SHIP	28892	18-Dec-03	HK-0203
PORTLAND BAY	BULK CARRIER	16960	29-Dec-03	HK-1224
VALOR	BULK CARRIER	25190	29-Dec-03	HK-1009

註： 如有任何查詢，請致電 2852 4421 海事處船舶註冊處。

Note: Enquiries can be directed to the Shipping Registry of the Marine Department at 2852 4421.

附錄 H
APPENDIX H

2003年輔航設備
Aids to Navigation, 2003

I. 使用中 IN USE (as at 31.12.2003)	燈浮標	Lighted Buoy	118
	燈航標	Lighted Beacon	379
	雷達信標	Racon	1
	霧角	Fog Horn	7

II. 本年改進的輔航裝置
AIDS REPROVISIONED DURING THE YEAR

1. 汀九橋臺 3
Ting Kau Bridge Pier 3 - 該燈於 1 月期間換上全新現代化器材，用以提高其可靠性。
- The light was replaced with modern equipment for higher reliability in January.
2. 汀九橋臺 4
Ting Kau Bridge Pier 4 - 該燈於 1 月期間換上全新現代化器材，用以提高其可靠性。
- The light was replaced with modern equipment for higher reliability in January.
3. 橫瀾
Waglan - 該燈的後備航標燈於 1 月期間換上全新現代化器材，用以提高光達距離。
- The standby light was upgraded with modern equipment for better luminous range in January.
4. 石崗圍
Shek Kwong Wai - 該燈於 1 月期間換上全新現代化器材，用以提高其可靠性。
- The light was replaced with modern equipment for higher reliability in January.
5. 大利橋南 12
Tai Lei Bridge South 12 - 該燈於 2 月期間換上全新太陽能系統，用以提高航標的可靠性。
- The light was solarized to increase the reliability of the beacon in February.
6. 香港仔南 1
Aberdeen South 1 - 該燈於 2 月期間換上全新現代化器材，用以提高其可靠性。
- The light was replaced with modern equipment for higher reliability in February.
7. 香港仔南 2
Aberdeen South 2 - 該燈於 2 月期間換上全新現代化器材，用以提高其可靠性。
- The light was replaced with modern equipment for higher reliability in February.
8. 南堂村新碼頭
Nam Tong Tsuen New Pier - 該燈於 2 月期間換上全新現代化器材，用以提高其可靠性。
- The light was replaced with modern equipment for higher reliability in February.

附錄 H – 續
APPENDIX H – Cont'd

- | | |
|---|--|
| 9. 青馬橋臺 1
Tsing Ma Bridge Pier 1 | - 該燈於 2 月期間換上全新太陽能系統，用以提高航標的可靠性。
- The light was solarized to increase the reliability of the beacon in February. |
| 10. 青馬橋臺 2
Tsing Ma Bridge Pier 2 | - 該燈於 2 月期間換上全新太陽能系統，用以提高航標的可靠性。
- The light was solarized to increase the reliability of the beacon in February. |
| 11. 沙洲碼頭 1
Sha Chau Jetty 1 | - 該燈於 2 月期間換上全新太陽能系統，用以提高航標的可靠性。
- The light was solarized to increase the reliability of the beacon in February. |
| 12. 沙洲碼頭 2
Sha Chau Jetty 2 | - 該燈於 2 月期間換上全新太陽能系統，用以提高航標的可靠性。
- The light was solarized to increase the reliability of the beacon in February. |
| 13. 青馬橋臺 3
Tsing Ma Bridge Pier 3 | - 該燈於 3 月期間換上全新太陽能系統，用以提高航標的可靠性。
- The light was solarized to increase the reliability of the beacon in March. |
| 14. 青馬橋臺 4
Tsing Ma Bridge Pier 4 | - 該燈於 3 月期間換上全新太陽能系統，用以提高航標的可靠性。
- The light was solarized to increase the reliability of the beacon in March. |
| 15. 青馬橋臺 5
Tsing Ma Bridge Pier 5 | - 該燈於 3 月期間換上全新太陽能系統，用以提高航標的可靠性。
- The light was solarized to increase the reliability of the beacon in March. |
| 16. 汲水門橋臺 1
Kap Shui Mun Bridge Pier 1 | - 該燈於 3 月期間換上全新太陽能系統，用以提高航標的可靠性。
- The light was solarized to increase the reliability of the beacon in March. |
| 17. 汲水門橋臺 2
Kap Shui Mun Bridge Pier 2 | - 該燈於 3 月期間換上全新太陽能系統，用以提高航標的可靠性。
- The light was solarized to increase the reliability of the beacon in March. |
| 18. 汲水門橋臺 3
Kap Shui Mun Bridge Pier 3 | - 該燈於 3 月期間換上全新太陽能系統，用以提高航標的可靠性。
- The light was solarized to increase the reliability of the beacon in March. |
| 19. 汾流西灣碼頭
Fan Lau Sai Wan Pier | - 該燈於 3 月期間換上全新現代化器材，用以提高其可靠性。
- The light was replaced with modern equipment for higher reliability in March. |
| 20. 大利橋北 1
Tai Lei Bridge North 1 | - 該燈於 3 月期間換上全新現代化器材，用以提高其可靠性。
- The light was replaced with modern equipment for higher reliability in March. |

附錄 H – 續
APPENDIX H – Cont'd

- | | |
|--|---|
| 21. 望東灣村碼頭
Mong Tung Wan Tsuen Pier | - 該燈於 3 月期間換上全新現代化器材，用以提高其可靠性。
- The light was replaced with modern equipment for higher reliability in March. |
| 22. 萬角咀碼頭
Man Kok Tsui Pier | - 該燈於 3 月期間換上全新現代化器材，用以提高其可靠性。
- The light was replaced with modern equipment for higher reliability in March. |
| 23. 蒲苔碼頭
Po Toi Pier | - 該燈於 3 月期間換上全新現代化器材，用以提高其可靠性。
- The light was replaced with modern equipment for higher reliability in March. |
| 24. 橫瀾碼頭
Waglan Pier | - 該燈於 3 月期間換上全新現代化器材，用以提高其可靠性。
- The light was replaced with modern equipment for higher reliability in March. |
| 25. 黃竹角
Wong Chuk Kok | - 該燈於 2 月期間更換所有太陽能電池，用以提高航標的可靠性。
- All the solar batteries were renewed in order to increase the reliability of the beacon in February. |
| 26. 鶴咀
Cape D'Aguilar | - 該燈於 3 月期間加設了後備太陽能發電系統，用以提高航標的可靠性。
- The light was backed up with solar-energy with a view of increasing the reliability of the beacon in March. |
| 27. 橋咀洲碼頭
Kiu Tsui Chau Pier | - 為配合燈塔重修安排，整套航標燈系統曾經拆回工場進行檢修和調校。該燈並於 3 月期間換上全新現代化器材，用以提高航標的可靠性。
- The lighting equipment had been returned to workshop for overhaul following the rehabilitation of beacon structure. The light was then upgraded with modern equipment to increase the reliability of beacon in March. |
| 28. 沙洲導引燈
Sha Chau Leading Light | - 該燈於 3 月期間更換所有太陽能電池，用以提高航標的可靠性。
- All the solar batteries were renewed in order to increase the reliability of the beacon in March. |
| 29. 沙螺灣渡輪碼頭
Sha Lo Wan Ferry Pier | - 該燈於 4 月期間換上全新現代化器材，用以提高其可靠性。
- The light was replaced with modern equipment for higher reliability in April. |
| 30. 鶴咀
Cape D'Aguilar | - 該燈於 4 月期間換上全新現代化器材，用以提高光達距離。
- The light was upgraded with modern equipment for better luminous range in April. |

附錄 H – 續
APPENDIX H – Cont'd

- | | |
|--|---|
| 31. 青荃橋北綠
Tsing Tsuen Bridge
North Green | - 該燈於 4 月期間換上全新太陽能系統，用以提高航標的可靠性。
- The light was solarized to increase the reliability of the beacon in April. |
| 32. 青荃橋北紅
Tsing Tsuen Bridge
North Red | - 該燈於 4 月期間換上全新太陽能系統，用以提高航標的可靠性。
- The light was solarized to increase the reliability of the beacon in April. |
| 33. 銀洲
Ngan Chau | - 該燈於 5 月期間換上全新現代化器材，用以提高其可靠性。
- The light was replaced with modern equipment for higher reliability in May. |
| 34. 長洲碼頭

Cheung Chau Pier | - 為配合燈塔重修安排，整套航標燈系統曾經拆回工場進行檢修和調校。該燈並於 5 月期間換上全新現代化器材，用以提高航標的可靠性。
- The lighting equipment had been returned to workshop for overhaul following the rehabilitation of beacon structure. The light was then upgraded with modern equipment to increase the reliability of beacon in May. |
| 35. 長洲 A
Cheung Chau A | - 該燈於 5 月期間換上全新太陽能系統，用以提高航標的可靠性。
- The light was solarized to increase the reliability of the beacon in May. |
| 36. 長洲 B
Cheung Chau B | - 該燈於 5 月期間換上全新太陽能系統，用以提高航標的可靠性。
- The light was solarized to increase the reliability of the beacon in May. |
| 37. 長洲 C
Cheung Chau C | - 該燈於 5 月期間換上全新太陽能系統，用以提高航標的可靠性。
- The light was solarized to increase the reliability of the beacon in May. |
| 38. 長洲 D
Cheung Chau D | - 該燈於 5 月期間換上全新太陽能系統，用以提高航標的可靠性。
- The light was solarized to increase the reliability of the beacon in May. |
| 39. 南鯉魚門
South Lei Yue Mun | - 該燈於 5 月期間換上全新現代化器材，用以提高光達距離。
- The light was upgraded with modern equipment for better luminous range in May. |
| 40. 黃金海岸 2
Gold Coast 2 | - 該燈於 5 月期間更換所有太陽能電池，用以提高航標的可靠性。
- All the solar batteries were renewed in order to increase the reliability of the beacon in May. |
| 41. 黃麻角
Wong Ma Kok | - 該燈的太陽能發電板於 6 月期間加強，用以提高航標的可靠性。
- The nos. of solar panel were increased to enhance the reliability of the beacon in June. |

附錄 H – 續
APPENDIX H – Cont'd

42. 醉酒灣南 1
Rambler Channel South 1
- 該燈於 8 月期間換上全新現代化器材，用以提高光達距離。
- The light was upgraded with modern equipment for better luminous range in August.
43. 醉酒灣南 2
Rambler Channel South 2
- 該燈於 8 月期間換上全新現代化器材，用以提高光達距離。
- The light was upgraded with modern equipment for better luminous range in August.
44. 沙洲
Sha Chau
- 該燈於 8 月期間更換所有太陽能電池，用以提高航標的可靠性。
- All the solar batteries were renewed in order to increase the reliability of the beacon in August.
45. 后海灣 H
Deep Bay H
- 為配合燈塔重修安排，整套航標燈系統曾經拆回工場進行檢修和調校。該燈並於 8 月期間換上全新現代化器材，用以提高航標的可靠性。
- The lighting equipment had been returned to workshop for overhaul following the rehabilitation of beacon structure. The light was then upgraded with modern equipment to increase the reliability of beacon in August.
46. 后海灣 I
Deep Bay I
- 為配合燈塔重修安排，整套航標燈系統曾經拆回工場進行檢修和調校。該燈並於 8 月期間換上全新現代化器材，用以提高航標的可靠性。
- The lighting equipment had been returned to workshop for overhaul following the rehabilitation of beacon structure. The light was then upgraded with modern equipment to increase the reliability of beacon in August.
47. 筲箕灣 B
Shau Kei Wan B
- 該燈於 9 月期間更換所有太陽能電池，用以提高航標的可靠性。
- All the solar batteries were renewed in order to increase the reliability of the beacon in September.
48. 筲箕灣 C
Shau Kei Wan C
- 該燈於 9 月期間更換所有太陽能電池，用以提高航標的可靠性。
- All the solar batteries were renewed in order to increase the reliability of the beacon in September.
49. 筲箕灣 A
Shau Kei Wan A
- 該燈於 9 月期間更換所有太陽能電池，用以提高航標的可靠性。
- All the solar batteries were renewed in order to increase the reliability of the beacon in September.
50. 筲箕灣 D
Shau Kei Wan D
- 該燈於 9 月期間更換所有太陽能電池，用以提高航標的可靠性。
- All the solar batteries were renewed in order to increase the reliability of the beacon in September.
51. 海尾灣(交通燈)
Hoi Mei Wan
(Traffic Light)
- 該燈於 9 月期間更換所有太陽能電池，用以提高航標的可靠性。
- All the solar batteries were renewed in order to increase the reliability of the beacon in September.

附錄 H – 續
APPENDIX H – Cont'd

- | | |
|--|---|
| 52. 大利橋南 29 至 39

Tai Lei Bridge South
29 to 39 | - 該批燈於 11 月期間換上全新太陽能系統，用以提高航標的可靠性。

- These lights were solarized to increase the reliability of the beacon in November. |
| 53. 大利橋北 17 至 28

Tai Lei Bridge North
17 to 28 | - 該批燈於 11 月期間換上全新太陽能系統，用以提高航標的可靠性。

- These lights were solarized to increase the reliability of the beacon in November. |
| 54. 沙洲

Sha Chau | - 該燈於 11 月期間更換所有太陽能電池，用以提高航標的可靠性。

- All the solar batteries were renewed in order to increase the reliability of the beacon in November. |
| 55. 白角

Pak Kok | - 為配合燈塔重修安排，整套航標燈系統曾經拆回工場進行檢修和調校。該燈並於 12 月期間換上全新現代化器材，用以提高航標的可靠性。

- The lighting equipment had been returned to workshop for overhaul following the rehabilitation of beacon structure. The light was then upgraded with modern equipment to increase the reliability of beacon in December. |
| 56. 南堂尾

Tathong Point | - 該燈於 12 月期間換上全新現代化器材，用以提高光達距離。

- The light was upgraded with modern equipment for better luminous range in December. |
| 57. 土瓜坪碼頭

To Kwa Peng Pier | - 該燈於 10 月期間更換所有太陽能電池，用以提高航標的可靠性。

- All the solar batteries were renewed in order to increase the reliability of the beacon in October. |
| 58. 后海灣 J

Deep Bay J | - 為配合燈塔重修安排，整套航標燈系統曾經拆回工場進行檢修和調校。該燈並於 10 月期間換上全新現代化器材，用以提高航標的可靠性。

- The lighting equipment had been returned to workshop for overhaul following the rehabilitation of beacon structure. The light was then upgraded with modern equipment to increase the reliability of beacon in October. |
| 59. 塔門碼頭

Tap Mun Pier | - 該燈於 10 月期間更換所有太陽能電池，用以提高航標的可靠性。

- All the solar batteries were renewed in order to increase the reliability of the beacon in October. |
| 60. 青荃橋南綠

Tsing Tsuen Bridge
South Green | - 該燈於 11 月期間換上全新太陽能系統，用以提高航標的可靠性。

- The light was solarized to increase the reliability of the beacon in November. |

附錄 H – 續
APPENDIX H – Cont'd

- | | |
|--|---|
| 61. 青荃橋南紅
Tsing Tsuen Bridge
South Red | - 該燈於 11 月期間換上全新太陽能系統, 用以提高航標的可靠性。
- The light was solarized to increase the reliability of the beacon in November. |
| 62. 橋咀排

Kiu Tsui Pai | - 為配合燈塔重修安排, 整套航標燈系統曾經拆回工場進行檢修和調校。該燈並於 12 月期間換上全新現代化器材, 用以提高航標的可靠性。
- The lighting equipment had been returned to workshop for overhaul following the rehabilitation of beacon structure. The light was then upgraded with modern equipment to increase the reliability of beacon in December. |
| 63. 香港科技大學
The Hong Kong
University of Science and
Technology | - 該燈於 12 月期間換上全新太陽能系統, 用以提高航標的可靠性。
- The light was solarized to increase the reliability of the beacon in December. |
| 64. 白沙灣碼頭
Pak Sha Wan Pier | - 該燈於 12 月期間換上全新現代化器材, 用以提高其可靠性。
- The light was replaced with modern equipment for higher reliability in December. |

III. 本年新設的輔航裝置
NEW AIDS ESTABLISHED DURING THE YEAR

- | | |
|--|--|
| 1. 氣象 3
Weather 3 | - 一個新的燈浮標於 1 月 28 日設立在香港國際機場以東海面。
- A new lighted buoy was established on 28-1-2003 at a position to the east of the Hong Kong International Airport. |
| 2. 九龍公眾碼頭東面

Kowloon Public Pier E. | - 一個以太陽能操作的新燈航標於 3 月 25 日設立, 用以標示九龍公眾碼頭。
- A solar power operated light was established to mark the Kowloon Public Pier on 25-3-2003. |
| 3. 九龍公眾碼頭西面

Kowloon Public Pier W. | - 一個以太陽能操作的新燈航標於 3 月 25 日設立, 用以標示九龍公眾碼頭。
- A solar power operated light was established to mark the Kowloon Public Pier on 25-3-2003 |
| 4. 馬頭角公眾碼頭東北

Ma Tau Kok Public
Pier N.E. | - 一個以太陽能操作的新燈航標於 7 月 8 日設立, 用以標示馬頭角公眾碼頭。
- A solar power operated light was established to mark the Ma Tau Kok Public Pier on 8-7-2003. |

附錄 H – 續
APPENDIX H – Cont'd

- | | | |
|-----------------------------|---|---|
| 5. 馬頭角公眾碼頭西南 | - | 一個以太陽能操作的新燈航標於 7 月 8 日設立,用以標示馬頭角公眾碼頭。 |
| Ma Tau Kok Public Pier S.W. | - | A solar power operated light was established to mark the Ma Tau Kok Public Pier on 8-7-2003. |
| 6. 觀塘公眾碼頭 | - | 一個以太陽能操作的新燈航標於 7 月 15 日設立,用以標示觀塘公眾碼頭。 |
| Kwun Tong Public Pier | - | A solar power operated light was established to mark the Kwun Tong Public Pier on 15-7-2003. |
| 7. 喜靈洲 8 | - | 一個以太陽能操作的新燈航標於 8 月 20 日設立,用以標示喜靈洲避風塘東南面入口對開海面。 |
| Hei Ling Chau 8 | - | A new lighted beacon was established on 20-8-2003 off the southeast entrance of the Hei Ling Chau Typhoon Shelter. |
| 8. 西貢公眾碼頭 | - | 一個以太陽能操作的新燈航標於 8 月 13 日設立,用以標示西貢公眾碼頭。 |
| Sai Kung Public Pier | - | A solar power operated light was established to mark the Sai Kung Public Pier on 13-8-2003. |
| 9. 早禾坑碼頭 | - | 一個以太陽能操作的新燈航標於 8 月 13 日設立,用以標早禾坑碼頭。 |
| Tso Wo Hang Pier | - | A solar power operated light was established to mark the Tso Wo Hang Pier on 13-8-2003. |
| 10. 皇后碼頭東面 | - | 一個以太陽能操作的新燈航標於 9 月 1 日設立,用以標示皇后碼頭。 |
| Queen's Pier E. | - | A solar power operated light was established to mark the Queen's Pier on 1-9-2003. |
| 11. 皇后碼頭西面 | - | 一個以太陽能操作的新燈航標於 9 月 1 日設立,用以標示皇后碼頭。 |
| Queen's Pier W. | - | A solar power operated light was established to mark the Queen's Pier on 1-9-2003. |
| 12. 柴灣 A | - | 一個以太陽能操作的新燈航標於 10 月 2 日設立在柴灣貨運區,用以劃分小船碇泊區。 |
| Chai Wan A | - | A solar power operated light was established at Chai Wan Cargo Handling Basin for demarcating the small boat anchorage area on 2-10-2003. |
| 13. 柴灣 B | - | 一個以太陽能操作的新燈航標於 10 月 2 日設立在柴灣貨運區,用以劃分小船碇泊區。 |
| Chai Wan B | - | A solar power operated light was established at Chai Wan Cargo Handling Basin for demarcating the small boat anchorage area on 2-10-2003. |

附錄 H – 續
APPENDIX H – Cont'd

- | | | |
|--------------------|---|---|
| 14. 柴灣 C | - | 一個以太陽能操作的新燈航標於 10 月 2 日設立在柴灣貨運區，用以劃分小船碇泊區。 |
| Chai Wan C | - | A solar power operated light was established at Chai Wan Cargo Handling Basin for demarcating the small boat anchorage area on 2-10-2003. |
| 15. 龍鼓洲碼頭 | - | 一個以太陽能操作的新燈航標於 11 月 20 日設立，用以標示龍鼓洲碼頭。 |
| Lung Kwu Chau Pier | - | A solar power operated light was established to mark the Lung Kwu Chau Pier on 20-11-2003. |

IV. 本年拆除的輔航裝置
AIDS DISCONTINUED DURING THE YEAR

- | | | |
|-------------------------------|---|---|
| 1. 皇后碼頭 | - | 這個燈浮標於 5 月 23 日永久終止服務。 |
| Lighted Buoy off Queen's Pier | - | The lighted buoy was permanently withdrawn from service on 23-5-2003. |

V. 本年遭損毀的輔航裝置
AIDS DAMAGED DURING THE YEAR

- | | | |
|------------------|---|--|
| 1. 青衣西 | - | 此燈浮標於 1 月、3 月、9 月及 11 月期間熄滅，其後在現場發現此燈浮標的部分設備被切斷兼失去。 |
| Tsing Yi West | - | The lighted buoy was reported unlit and subsequently found part of the equipment sheared off and lost in January, March, September and November. |
| 2. 繫泊浮泡 A76 | - | 此燈浮標於 2 月及 8 月期間遭損毀，航標燈熄滅。 |
| Mooring Buoy A76 | - | The lighted buoy was reported damaged and unlit in February and August. |
| 3. 油麻地 1 | - | 此燈浮標於 2 月及 10 月期間遭損毀，航標燈熄滅。 |
| Y M T 1 | - | The lighted buoy was reported damaged and unlit in February and October. |
| 4. 藍塘 3 | - | 此燈浮標於 3 月期間熄滅，其後在現場發現此燈浮標的部分設備被切斷兼失去。 |
| TCS3 | - | The lighted buoy was reported unlit and subsequently found part of the equipment sheared off and lost in March. |
| 5. 繫泊浮泡 A17 | - | 此燈浮標於 3 月期間遭損毀，航標燈熄滅。 |
| Mooring Buoy A17 | - | The lighted buoy was reported damaged and unlit in March. |

附錄 H – 續
APPENDIX H – Cont'd

- | | |
|-----------------------------------|--|
| 6. 青山 6
CP 6 | - 此燈浮標於 4 月期間遭損毀，航標燈熄滅。
- The lighted buoy was reported damaged and unlit in April. |
| 7. 西錨區
WA | - 此燈浮標於 4 月期間遭損毀，航標燈熄滅。
- The lighted buoy was reported damaged and unlit in April. |
| 8. 北航 2
Northern 2 | - 此燈浮標於 5 月期間遭損毀，航標燈熄滅。
- The lighted buoy was reported damaged and unlit in May. |
| 9. 沙龍 E
SLMP E | - 此燈浮標於 6 月期間遭損毀，航標燈熄滅。
- The lighted buoy was reported damaged and unlit in June. |
| 10. 北航 3

Northern 3 | - 此燈浮標於 5 月期間熄滅，其後在現場發現此燈浮標的部分設備被切斷兼失去。
- The lighted buoy was reported unlit and subsequently found part of the equipment sheared off and lost in May. |
| 11. 北長洲石東南
Adamasta Rock SE | - 此燈浮標於 7 月期間遭損毀，航標燈熄滅。
- The lighted buoy was reported damaged and unlit in July. |
| 12. 交椅洲北

Kau Yi Chau North | - 此燈浮標於 9 月期間熄滅，其後在現場發現此燈浮標的部分設備被切斷兼失去。
- The lighted buoy was reported unlit and subsequently found part of the equipment sheared off and lost in September. |
| 13. 藍塘 1
TCS1 | - 此燈浮標於 10 月期間遭損毀，航標燈熄滅。
- The lighted buoy was reported damaged and unlit in October. |
| 14. 繫泊浮泡 A74
Mooring Buoy A74 | - 此燈浮標於 11 月期間遭損毀，航標燈熄滅。
- The lighted buoy was reported damaged and unlit in November. |

附錄 H – 續
APPENDIX H – Cont'd

VI. 工場員工與輔航燈比例

RATIO OF WORKSHOP STAFF TO AIDS

年份 Year	員工 Staff		輔航燈 Aids		比例 Ratio
		(%)		(%)	
1989	31	(+10.7)	307	(-2.2)	9.9
1990	34	(+9.7)	319	(+3.9)	9.4
1991	34	(0.0)	326	(+2.2)	9.6
1992	34	(0.0)	327	(+0.3)	9.6
1993	40	(+17.6)	356	(+8.9)	8.9
1994	40	(0.0)	375	(+5.3)	9.4
1995	37	(-7.5)	379	(+1.1)	10.2
1996	36	(-2.7)	380	(+0.3)	10.6
1997	32	(-11.1)	395	(+3.9)	12.3
1998	29	(-9.4)	432	(+9.4)	14.9
1999	27	(-6.9)	463	(+7.2)	17.1
2000	27	(0.0)	468	(+1.1)	17.3
2001	25	(-7.4)	482	(+3.0)	19.3
2002	27	(8.0)	483	(+0.2)	17.9
2003	27	(0.0)	497	(+2.9)	18.4

註釋: () % 與去年比較

Note: () % changes over the preceding year