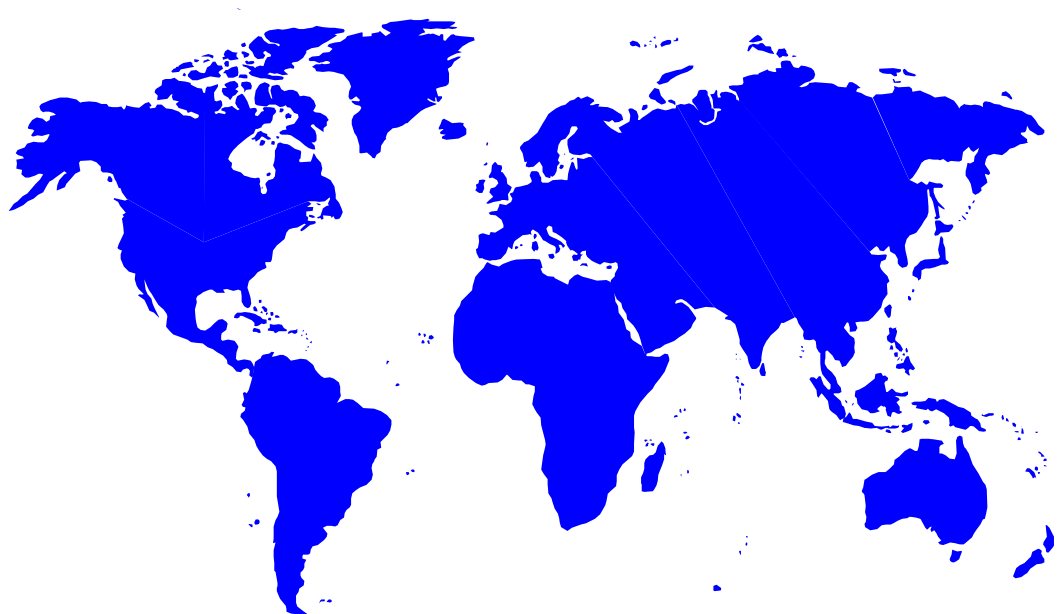




統計年報

STATISTICAL TABLES

2000



中華人民共和國
香港特別行政區
海事處

Marine Department
Hong Kong Special Administrative Region
People's Republic of China

本處使命是促進卓越的海事服務

Our mission is to promote excellence in marine services

海事處統計年報

STATISTICAL TABLES OF MARINE DEPARTMENT

二零零零年版
2000 Edition

有關本刊物的查詢，請聯絡：
海事處 策劃及發展協調部 統計組
地址：中國香港香港仔石排灣道 100A 號 1 樓 103 室
電話：(852) 2873 8371 圖文傳真：(852) 2542 4638
電子郵件：st-sec@mardep.gcn.gov.hk

Enquiries about this publication can be directed to :

Statistics Section
Planning & Development Branch
Marine Department

Address : Room 103, 1/F., 100A Shek Pai Wan Road, Aberdeen, Hong Kong, China.

Tel. No. : (852) 2873 8371 Fax. No. : (852) 2542 4638

E-mail : st-sec@mardep.gcn.gov.hk

政府海事處網頁 Home Page of the Marine Department

<http://www.info.gov.hk/mardep/>

目錄
CONTENTS

	頁數 Page No.
註釋 EXPLANATORY NOTES	iv - v
摘要 SUMMARY	vi
1996 至 2000 年 主要港口統計數字連同每年增長率 Principal Port Statistics for 1996 - 2000 and Annual Growth Rates	
第一部 - 港口活動 PART I - Port Activities	
 <i>抵港 / 離港的船次</i> <i>Vessel Arrivals/Departures</i>	
表 1 . 2000 年 按主要停泊地點分析抵港遠洋輪船 TABLE 1 . Ocean Vessel Arrivals by Main Berthing Location, 2000	1
表 2 . 2000 年 按主要停泊地點分析離港遠洋輪船 TABLE 2 . Ocean Vessel Departures by Main Berthing Location, 2000	1
表 3 . 2000 年 按船舶類型分析抵港船隻的船次 TABLE 3 . Vessel Arrivals by Ship Type, 2000	2
表 4 . 2000 年 按船旗分析抵港船隻 TABLE 4 . Vessel Arrivals by Flag, 2000	3
表 5 . 2000 年 按船旗分析曾停靠香港的船隻數目和淨註冊噸位 TABLE 5 . Number and NRT of Vessels Calling Hong Kong by Flag, 2000	4
表 6 . 2000 年 按船舶類型分析離港船隻的平均在港停留時間 TABLE 6 . Average Time in Port for Vessels Departing Hong Kong by Ship Type, 2000	5
表 7 . 2000 年 經貨櫃碼頭的遠洋輪船統計資料 TABLE 7 . Statistics on Ocean Vessels Calling Container Terminals, 2000	6
表 8 . 2000 年 按夏季吃水分析抵港遠洋輪船 TABLE 8 . Ocean Vessel Arrivals by Summer Draft, 2000	7
表 9 . 2000 年 按船隻長度分析抵港遠洋輪船 TABLE 9 . Ocean Vessel Arrivals by Vessel Length, 2000	7
表 10 . 2000 年 按主要來港原因分析抵港遠洋輪船 TABLE 10 . Ocean Vessel Arrivals by Main Reason of Call, 2000	8
表 11 . 2000 年 港澳客運碼頭和中國客運碼頭的抵港 / 離港統計資料 TABLE 11 . Statistics on Arrivals/Departures at Macau Ferry Terminal and China Ferry Terminal, 2000	9 - 10

旅客吞吐量

Passenger Throughput

表 12 . 按客運碼頭分析旅客吞吐量	11
TABLE 12 . Passenger Throughput by Ferry Terminal	
表 13 . 2000 年 港澳客運碼頭和中國客運碼頭的抵港 / 離港旅客	12 - 13
TABLE 13 . Passenger Arrivals/Departures at Macau Ferry Terminal and China Ferry Terminal, 2000	

貨櫃 / 貨物吞吐量

Container/Cargo Throughput

表 14 . 2000 年 按主要貨物裝卸地點分析貨櫃吞吐量	14
TABLE 14 . Container Throughput by Main Cargo Handling Location, 2000	
表 15 . 2000 年 按貨櫃碼頭以外的主要貨物裝卸地點分析裝卸的貨櫃	15
TABLE 15 . Containers Discharged/Loaded at Main Cargo Handling Locations Other than Container Terminals, 2000	
表 16 . 2000 年 在公眾貨物裝卸區裝卸的貨物	16
TABLE 16 . Cargo Loaded/Discharged at PCWAs, 2000	

第二部 - 港口及船舶服務

PART II - Port and Shipping Services

表 17 . 船舶安全監督統計資料	17 - 19
TABLE 17 . Statistics on Ship Safety	
表 18 . 本地船舶安全統計資料	20 - 24
TABLE 18 . Statistics on Local Vessels Safety	
表 19 . 海員發證、註冊和僱用統計資料	25 - 29
TABLE 19 . Statistics on Seafarers' Certification, Registration and Employment	
表 20 . 香港註冊船舶統計資料	30
TABLE 20 . Statistics on Ships Registered in Hong Kong	
表 21 . 政府船隊統計資料	31 - 32
TABLE 21 . Statistics on Government Fleet	
表 22 . 海港繫泊浮泡統計資料	33
TABLE 22 . Statistics on Harbour Mooring Buoys	
表 23 . 2000 年 按分布地點分析香港私用繫泡數目	34 - 35
TABLE 23 . Number of Private Moorings Laid in Hong Kong by Location, 2000	

	表 24 . 垃圾收集、油污和檢控個案	
	TABLE 24 . Refuse Collection, Oil Pollution and Prosecutions	36 - 37
第三部 -	港口運作	
PART III -	Port Operations	
	表 25 . 香港持牌船隻統計資料	
	TABLE 25 . Statistics on Hong Kong Licensed Vessels	38
	表 26 . 2000 年 按噸位等級分析香港持牌船隻	
	TABLE 26 . Hong Kong Licensed Vessels by Tonnage Classification, 2000	39
	表 27 . 用作裝卸貨物和海港工程的持牌船隻 (屬第 II 類持牌船隻)	
	TABLE 27 . Licences on Cargo Working and Harbour Engineering Crafts (i.e. Class II Vessel Licences)	40
	表 28 . 2000 年 對住家船隻的清除和管制	
	TABLE 28 . Clearance and Control of Dwelling Vessels, 2000	41
第四部 -	附錄	
PART IV -	Appendices	
	A . 海事處組織架構圖	
	Marine Department Organization Chart	A1
	B . 2000 年 12 月 31 日 海事處編制和實際員額	
	Marine Department Establishment and Strength as at 31.12.2000	A2 - A5
	C . 2000 年 海事處訪客	
	Visitors to the Marine Department, 2000	A6 - A7
	D . 2000 年 新訂海事法例	
	New Maritime Legislation, 2000	A8 - A11
	E . 2000 年 在香港註冊的船舶	
	Ships Registered in Hong Kong, 2000	A12 - A19
	F . 2000 年 終止在香港註冊的船舶	
	Ships De-registered in Hong Kong, 2000	A20 - A25
	G . 2000 年 輔航設備	
	Aids to Navigation, 2000	A26 - A35

註釋

EXPLANATORY NOTES

一般

1. 船隻統計數字計算至最接近的十位，而淨註冊噸位、貨物和貨櫃吞吐量是計算至最接近的千位。由於進位關係，因此本報告中所列的個別數字之和可能不等於其總數。變動百分率和比重百分率皆以未經進位的數字計出。
2. 除非另有指明，括號內的數字指與前一年同期比較的變動百分率。
3. 一些常用的字詞、簡寫如下：
NRT = 淨註冊噸位
TEU = 二十呎標準貨櫃單位

資料來源

4. 船隻進出口統計資料乃根據船公司或代理人向海事處申報船舶出／入口資料時所遞交的申報表編製而成。（摘要、表一至十）
5. 河運方面的貨運統計資料過去是由港口及航運局編製。由1998年開始，海運和河運貨運統計資料皆由政府統計處根據貨物艙單托運資料抽樣編製而成。（摘要）
6. 1998年以前，經由遠洋輪船在貨櫃碼頭裝運貨櫃的統計資料，由碼頭經營者直接提供，而經由遠洋輪船在其他地點裝運的貨櫃數字，則根據海事處所收到的船隻一般事項申報表編製而成。至於經由內河船隻裝運貨櫃的統計資料，則主要來自河運貨物艙單。（摘要、表十四和十五）
7. 1998年起，經由遠洋輪船在貨櫃碼頭裝運的載貨貨櫃統計資料不再為碼頭經營者所提供，而改由政府統計處根據貨物艙單編製。現時，貨櫃吞吐量統計資料，除了經遠洋輪船處理的空貨櫃數據以外，皆由政府統計處編製。（摘要、表十四和十五）
8. 1999年10月開始，有關遠洋輪船的主要貨物裝卸區和主要停泊地點，資料取自海事處船舶交通管理系統所保存的船隻活動報告。（表一至二、表七、表十四和十五）

General

1. Statistics on the number of vessel are rounded to the nearest ten, while those on net register tonnage, cargo and container throughput are rounded to the nearest thousand. Therefore, figures shown in the tables may not add up to the respective totals due to rounding. Percentage changes and percentage shares are calculated from unrounded figures.
2. Unless otherwise specified, figures in bracket are percentage changes over the same period in the preceding year.
3. Some common terms/abbreviations used are:
NRT = Net Register Tonnage
TEU = Twenty-foot Equivalent Unit

Data Sources

4. Vessel statistics are based on the declaration forms submitted by shipping companies/agents to Marine Department for declaring entry/exit. **(Summary Table, Tables 1 - 10)**
5. Cargo statistics in respect of river trade used to be compiled by the Hong Kong Port and Maritime Board. As from 1998, both seaborne and river cargo statistics are compiled by the Census and Statistics Department (C&SD) based on a sample of consignments on cargo manifests. **(Summary Table)**
6. Before 1998, statistics on container throughput handled by ocean vessels at Container Terminals were directly obtained from the terminal operators, while those handled at other locations were compiled based on the General Declaration Forms submitted to Marine Department. For statistics on container throughput by river vessels, they were principally based on river cargo manifests. **(Summary Table, Tables 14 and 15)**
7. As from 1998, statistics on laden containers handled by ocean vessels at Container Terminals are no longer based on the operators' returns, but compiled by C&SD based on cargo manifests instead. All container throughput statistics, except empty containers handled by ocean vessels, are now compiled by C&SD. **(Summary Table, Tables 14 and 15)**
8. Starting from October 1999, information on the main cargo handling location and main berthing location in respect of ocean vessels are extracted from the trip activity report kept in the Marine Department's Vessel Traffic Management System. **(Tables 1 - 2, 7, 14 and 15)**

資料定義

9. 1993年開始，遠洋輪船和內河船隻的定義已作修改。新定義是視乎其停靠港口是否在內河航限範圍內。（摘要、表一至十一、表十四和十五）
10. 根據《船舶及港口管制條例》(第313章)所訂，內河船隻是指進出香港與內河航限內的港口之間的船隻。（摘要、表一至十一、表十四和十五）
11. 船隻在進入香港水域後可能停泊多過一個停泊地點。若船隻來港的主要原因是裝卸貨物，則主要的貨物裝卸地點和主要的停泊地點均為最昂貴的地點，當中以貨櫃碼頭居首位，隨後是泊位和倉庫碼頭、公眾貨物裝卸區、浮泡和碇泊處。若船隻來港的主要原因不是裝卸貨物，主要停泊地點為停留時間最長的地點。（表一至二、表七、表十四和十五）

資料限制

12. 遠洋客船數字包括在內河航限以外水域行駛的遊樂船隻。但是，有些代理人並無申報這些船隻的淨註冊噸位資料給海事處，導致遠洋客船和遠洋輪船的淨註冊噸位數字在某程度上也許低於實際數字。（摘要、表一至二、表四和五）
13. 1999年以前，內河貨船統計資料包括一些在內河航限內行駛及有通知海事處的本地持牌遊樂船隻和漁船。由於這個數目微不足道，自1999年起，這些船隻類別不再納入內河船隻統計資料內。（摘要、表三至六）
14. 內河客船的抵港次數實際指船隻停泊於港澳客運碼頭和中國客運碼頭的次數。（摘要、表三至五和十一）

抵港次數與停泊次數或許不同，原因如下：

- (i) 船隻可能在同一次航程中停泊過港澳客運碼頭和中國客運碼頭；或者
- (ii) 船隻在停泊碼頭前或離開碼頭後，其航道可能未超越香港水域範圍。

策劃及發展協調部
統計組

Data Definitions

9. Starting from 1993, ocean vessels and river vessels have been redefined according to whether or not their ports of call are beyond the river trade limits. **(Summary Table, Tables 1 - 11, 14 and 15)**
10. In accordance with the Shipping and Port Control Ordinance, Cap. 313, Laws of Hong Kong, river vessels refer to those travelling between Hong Kong and ports that are within the river trade limits. **(Summary Table, Tables 1 - 11, 14 and 15)**
11. A vessel may berth at more than one locations after entering into the Hong Kong waters boundary. If the main reason of call of the vessel is for loading/discharging cargo, both the main cargo handling location and the main berthing location will be the most costly location, with Container Terminals ranking first, followed by Berths and Wharves, Public Cargo Working Areas, Buoys and Anchorages. If the main reason of call is not for loading/discharging cargo, the main berthing location will be the one with the longest stay. **(Tables 1 - 2, 7, 14 and 15)**

Data Limitations

12. The number of ocean passenger vessel includes pleasure vessels plying beyond the river trade limits. However, as some of them do not report NRT data to Marine Department, the NRT total for ocean passenger vessels and ocean vessels as a whole may be under-estimated to a certain extent. **(Summary Table, Tables 1 - 2, 4 and 5)**
13. Before 1999, river cargo vessel statistics included some locally licensed pleasure vessels and fishing vessels known to be plying within the river trade limits. As the number is insignificant, river vessel statistics do not include these categories of vessels as from 1999. **(Summary Table, Tables 3 - 6)**
14. The figures on arrivals of river passenger vessels in fact refer to the number of berthings at the Macau Ferry Terminal and the China Ferry Terminal. **(Summary Table, Tables 3 - 5 and 11)**

The number of berthings may differ from the number of arrivals because:

- (i) a ship may berth at both the Macau Ferry Terminal and the China Ferry Terminal in a single trip; or
- (ii) a ship may not have crossed the Hong Kong waters boundary right before or after a berthing.

Statistics Section,
Planning and Development Branch

摘要
SUMMARY
1996 至 2000年 主要港口統計數字連同每年增長率
Principal Port Statistics for 1996 - 2000 and Annual Growth Rates

項目 Item	1996	1997	1998	1999	2000	每年增長率 Annual Growth Rates	
						1999 - 2000	1995 - 2000 (Average)
1. 抵港、離港船次 Number of Vessel Arrivals and Departures	438 270	466 830	462 640	425 710	433 300	+1.8%	+0.1%
(a) 遠洋輪船 Ocean Vessel	83 540	88 970	83 610	75 260	74 830	-0.6%	-2.2%
貨船 - 抵港 Cargo Vessel - Arrivals	38 970	41 450	38 540	35 140	34 900	-0.7%	-2.2%
- 離港 - Departures	38 990	41 450	38 750	35 170	34 340	-2.4%	-2.7%
客船 - 抵港 Passenger Vessel - Arrivals	2 790	3 020	3 150	2 430	2 780	+14.3%	+2.1%
- 離港 - Departures	2 800	3 040	3 170	2 510	2 810	+12.0%	+1.7%
(b) 內河船隻 River Vessel	354 730	377 870	379 020	350 460	358 470	+2.3%	+0.7%
貨船 - 抵港 Cargo Vessel - Arrivals	112 190	122 760	124 610	115 330	119 180	+3.3%	+1.8%
- 離港 - Departures	112 010	122 670	124 410	115 270	119 610	+3.8%	+1.9%
客船 - 抵港 Passenger Vessel - Arrivals	65 270	66 220	65 000	59 930	59 810	-0.2%	-1.5%
- 離港 - Departures	65 260	66 220	65 000	59 930	59 880	-0.1%	-1.5%
2. 抵港、離港船隻的淨註冊噸位 (千公噸) N.R.T. of Vessel Arrivals and Departures ('000 tonnes)	458 918	500 702	523 245	534 674	601 128	+12.4%	+6.7%
(a) 遠洋輪船 Ocean Vessel	364 445	397 572	416 223	430 630	484 675	+12.6%	+7.0%
(b) 內河船隻 River Vessel	94 473	103 130	107 023	104 044	116 453	+11.9%	+5.8%
3. 貨櫃吞吐量 (千個標準貨櫃單位) Container Throughput ('000 TEUs)	13 460	14 567 (14 386)	14 582	16 211	18 098	+11.6%	} 不適用 Not Applicable
(a) 貨櫃碼頭 Container Terminals	8 686	9 490 (9 564)	9 555	10 295	11 603	+12.7%	
(b) 貨櫃碼頭以外 Other than Container Terminals							
遠洋 Ocean	3 045	3 156 (2 900)	2 641	2 838	3 033	+6.8%	
內河 River	1 729	1 922 (1 922)	2 386	3 077	3 462	+12.5%	
4. 貨物吞吐量 (千公噸) Cargo Throughput ('000 tonnes)	157 299	169 229	167 170	168 838	174 643	+3.4%	+2.3%
(a) 海運 Seaborne	125 838	133 301	127 482	128 222	130 937	+2.1%	+0.6%
(b) 河運 River	31 461	35 928	39 688	40 616	43 706	+7.6%	+8.8%
5. 遠洋船所裝卸的煤和石油產品 (千公噸) Coal and Petroleum Products Loaded and Discharged by Ocean Vessels ('000 tonnes)	27 428	27 173	28 861	23 837	19 540	-18.0%	-8.2%

註釋：() 由1998年起，一系列新的貨櫃吞吐量數字已經開始編製。為方便比較，按新系列編製的1997年數字於括號內展示。

Note: () Starting from 1998, a new series of container throughputs has been compiled. To facilitate comparison, figures for 1997 under the new series are presented in brackets.

表 1
TABLE 1
2000 年 按主要停泊地點分析抵港遠洋輪船
Ocean Vessel Arrivals by Main Berthing Location, 2000

主要停泊地點 Main Berthing Location	主要船隻類別 Main Category								總計 Total			
	貨船 Cargo Vessels				客船 Passenger Vessels							
	抵港船次 No. of Vessel Arrivals		淨註冊噸位 (千位數) NRT ('000)		抵港船次 No. of Vessel Arrivals		淨註冊噸位 (千位數) NRT ('000)		抵港船次 No. of Vessel Arrivals		淨註冊噸位 (千位數) NRT ('000)	
	(%)		(%)		(%)		(%)		(%)		(%)	
貨櫃碼頭 Container Terminals	11 200	(+8.7)	151 878	(+11.3)	0	(0.0)	0	(0.0)	11 200	(+8.7)	151 878	(+11.3)
碇泊處 Anchorages	12 490	(-0.7)	41 583	(+7.4)	390	(+113.9)	51	(-41.6)	12 880	(+0.9)	41 634	(+7.3)
浮泡 Buoys	2 770	(+10.4)	11 743	(+7.5)	1 410	(+9.0)	5 684	(+5.2)	4 180	(+10.0)	17 427	(+6.7)
公眾貨物裝卸區 Public Cargo Working Areas	5 000	(-28.9)	1 085	(-35.9)	0	(-100.0)	0	(N.A.)	5 000	(-28.9)	1 085	(-35.9)
其他泊位和倉庫碼頭 Other Berths and Wharves	3 440	(+26.2)	11 001	(+2.9)	990	(+2.8)	20 231	(+77.9)	4 420	(+20.1)	31 232	(+41.5)
總計 Total	34 900	(-0.7)	217 290	(+9.4)	2 780	(+14.3)	25 966	(+54.0)	37 680	(+0.3)	243 256	(+12.9)

表 2
TABLE 2
2000 年 按主要停泊地點分析離港遠洋輪船
Ocean Vessel Departures by Main Berthing Location, 2000

主要停泊地點 Main Berthing Location	主要船隻類別 Main Category								總計 Total			
	貨船 Cargo Vessels				客船 Passenger Vessels							
	離港船次 No. of Vessel Departures		淨註冊噸位 (千位數) NRT ('000)		離港船次 No. of Vessel Departures		淨註冊噸位 (千位數) NRT ('000)		離港船次 No. of Vessel Departures		淨註冊噸位 (千位數) NRT ('000)	
	(%)		(%)		(%)		(%)		(%)		(%)	
貨櫃碼頭 Container Terminals	11 140	(+9.9)	152 288	(+10.8)	0	(0.0)	0	(0.0)	11 140	(+9.9)	152 288	(+10.8)
碇泊處 Anchorages	11 930	(-10.0)	40 537	(+11.7)	410	(-0.2)	39	(-43.3)	12 330	(-9.7)	40 575	(+11.6)
浮泡 Buoys	2 690	(-9.5)	11 437	(-7.8)	1 410	(+8.9)	5 681	(+5.2)	4 100	(-4.0)	17 119	(-3.9)
公眾貨物裝卸區 Public Cargo Working Areas	5 180	(-16.5)	1 204	(+15.8)	0	(0.0)	0	(0.0)	5 180	(-16.5)	1 204	(+15.8)
其他泊位和倉庫碼頭 Other Berths and Wharves	3 400	(+31.4)	9 974	(-10.1)	990	(+23.1)	20 259	(+75.7)	4 390	(+29.5)	30 233	(+33.6)
總計 Total	34 340	(-2.4)	215 440	(+8.7)	2 810	(+12.0)	25 979	(+52.8)	37 150	(-1.4)	241 419	(+12.2)

註釋： N.A. 不適用
Note : N.A. Not Applicable

表 3
TABLE 3
2000 年 按船舶類型分析抵港船隻的船次
Vessel Arrivals by Ship Type, 2000

船舶類型 Ship Type	遠洋輪船 Ocean Vessels		內河船隻 River Vessels	
	抵港船次 No. of Vessel Arrivals	比重百分率 Percentage Share	抵港船次 No. of Vessel Arrivals	比重百分率 Percentage Share
	(%)		(%)	
化學品運載船 Chemical Carrier/Tanker	210 (-5.1)	0.5%	700 (-41.4)	0.4%
普通貨船 Conventional Cargo Vessel	10 870 (-5.1)	28.8%	65 620 (+2.5)	36.7%
郵船 / 渡輪 Cruise/Ferry	2 400 (+16.5)	6.4%	59 810 (-0.2)	33.4%
散裝乾貨船 Dry Bulk Carrier	710 (-42.1)	1.9%	210 (-1.4)	0.1%
漁船 / 魚類加工船 Fishing/Fish Processing Vessel	280 (+28.8)	0.7%	N.A. (N.A.)	N.A.
全槽格式貨櫃船 Fully Cellular Container Vessel	19 450 (+5.4)	51.6%	16 130 (+67.6)	9.0%
液化氣體運載船 Gas Carrier/Tanker	100 (-8.5)	0.3%	10 (-88.5)	@
駁船 / 躉船 / 貨艇 Lighter/Barge/Cargo Junk	360 (+312.8)	0.9%	21 180 (-5.9)	11.8%
油輪 Oil Tanker	1 610 (+0.4)	4.3%	1 660 (-43.1)	0.9%
遊樂船隻 Pleasure Vessel	380 (+1.9)	1.0%	N.A. (N.A.)	N.A.
滾裝船 Roll On/Roll Off	340 (+3.3)	0.9%	* (+200.0)	@
半貨櫃船 Semi-container Vessel	490 (-55.3)	1.3%	1 090 (+33.1)	0.6%
拖船 Tug	300 (+83.0)	0.8%	12 110 (-9.7)	6.8%
其他 Others	190 (-5.4)	0.5%	460 (-9.3)	0.3%
總計 Total	37 680 (+0.3)	100.0%	178 980 (+2.1)	100.0%

註釋： * 少於 5
Notes： * Less than 5

@ 少於 0.05%
@ Less than 0.05%

N.A. 不適用
N.A. Not Applicable

表 4
TABLE 4
2000 年 按船旗分析抵港船隻
Vessel Arrivals by Flag, 2000

船旗 Flag		遠洋輪船 Ocean Vessels		內河船隻 River Vessels	
		抵港船次 No. of Vessel Arrivals	淨註冊噸位 (千位數) NRT ('000)	抵港船次 No. of Vessel Arrivals	淨註冊噸位 (千位數) NRT ('000)
		(%)	(%)	(%)	(%)
巴哈馬	Bahamas	1 180 (+22.7)	8 191 (+53.6)	30 (+250.0)	291 (+426.4)
伯利茲	Belize	560 (+20.9)	589 (+42.5)	40 (-80.6)	63 (-31.4)
中國	China	13 260 (-14.2)	13 370 (+7.4)	120 680 (+5.3)	35 619 (+16.1)
塞浦路斯	Cyprus	710 (+15.5)	6 507 (+14.6)	30 (0.0)	235 (+10.0)
丹麥	Denmark	280 (-1.8)	9 945 (+3.4)	10 (+166.7)	132 (+147.2)
德國	Germany F R	850 (-6.5)	14 438 (-6.0)	30 (+127.3)	247 (+27.6)
希臘	Greece	290 (+10.1)	5 304 (+27.4)	10 (+44.4)	251 (+133.1)
中國香港	Hong Kong, China	1 850 (+87.1)	8 144 (+88.1)	56 740 (-3.2)	16 789 (+0.1)
印度尼西亞	Indonesia	70 (-36.5)	158 (-41.3)	0 (-100.0)	0 (-100.0)
日本	Japan	170 (+1.2)	2 886 (+2.9)	* (0.0)	44 (+149.5)
大韓民國	Korea R	520 (-1.1)	3 937 (-5.7)	30 (+277.8)	85 (+836.7)
利比里亞	Liberia	1 540 (+22.6)	18 071 (+23.4)	40 (+9.1)	352 (+39.9)
馬來西亞	Malaysia	350 (+13.7)	3 065 (+19.4)	10 (-14.3)	52 (-17.1)
馬耳他	Malta	350 (+10.3)	3 172 (+46.8)	40 (+129.4)	325 (+141.2)
荷蘭	Netherlands	280 (+9.1)	4 683 (+6.2)	10 (+100.0)	29 (+128.2)
挪威	Norway	160 (+56.4)	1 784 (+14.2)	10 (-25.0)	80 (-24.3)
巴拿馬	Panama R	9 060 (+5.4)	81 894 (+13.7)	1 080 (-17.3)	1 871 (-23.5)
菲律賓	Philippines	130 (-17.0)	828 (-4.7)	* (+200.0)	25 (+646.5)
俄羅斯聯邦	Russian F	160 (+1.9)	1 085 (+11.0)	10 (+16.7)	62 (+16.4)
新加坡	Singapore R	1 640 (+1.0)	14 779 (+6.4)	30 (+7.1)	142 (-3.3)
聖文森特和格林納丁斯	St Vincent and Grenadines	520 (-21.6)	1 446 (-17.4)	50 (-11.3)	105 (+16.8)
台灣	Taiwan	1 260 (-4.8)	8 989 (-3.1)	0 (0.0)	0 (0.0)
英國	United Kingdom	260 (+26.4)	4 950 (+20.0)	10 (+400.0)	178 (+529.0)
美國	USA	240 (+13.9)	5 187 (+9.1)	* (-50.0)	22 (-52.6)
大洋洲合眾國	US Oceania	230 (+26.8)	2 968 (-21.7)	10 (+150.0)	58 (+363.5)
其他	Others	1 770 (+19.6)	16 888 (+20.4)	110 (-50.2)	293 (+11.8)
總計	Total	37 680 (+0.3)	243 256 (+12.9)	178 980 (+2.1)	57 350 (+10.6)

註釋： * 少於 5
Note : * Less than 5

表 5

TABLE 5

2000 年 按船旗分析曾停靠香港的船隻數目和淨註冊噸位
Number and NRT of Vessels Calling Hong Kong by Flag, 2000

船旗 Flag	遠洋輪船 Ocean Vessels		內河船隻 River Vessels	
	船隻數目 Number of Vessels	淨註冊噸位 (千位數) NRT ('000)	船隻數目 Number of Vessels	淨註冊噸位 (千位數) NRT ('000)
	(%)	(%)	(%)	(%)
巴哈馬 Bahamas	130 (+22.3)	1 420 (+27.4)	20 (+61.5)	245 (+167.0)
伯利茲 Belize	70 (-6.8)	82 (-12.7)	20 (-39.3)	34 (+32.2)
中國 China	960 (-15.9)	1 493 (-6.7)	1 830 (-14.9)	662 (-27.7)
塞浦路斯 Cyprus	140 (-3.4)	1 431 (-1.2)	10 (-33.3)	119 (-22.1)
丹麥 Denmark	60 (+1.8)	1 624 (-0.1)	* (+100.0)	79 (+51.6)
德國 Germany F R	100 (-20.0)	1 800 (-11.4)	10 (+140.0)	155 (+126.2)
希臘 Greece	50 (-1.9)	983 (+19.0)	10 (+80.0)	168 (+157.1)
中國香港 Hong Kong, China	230 (+38.8)	1 271 (+34.8)	630 (+3.3)	541 (+12.3)
印度尼西亞 Indonesia	20 (-34.8)	36 (-44.6)	0 (-100.0)	0 (-100.0)
日本 Japan	30 (-3.2)	400 (+3.0)	* (0.0)	22 (+45.7)
大韓民國 Korea R	110 (+9.3)	604 (+8.8)	10 (-38.1)	40 (-21.8)
利比里亞 Liberia	290 (0.0)	3 701 (+6.1)	30 (-11.4)	310 (+21.5)
馬來西亞 Malaysia	70 (-5.2)	646 (+5.6)	10 (-44.4)	40 (+35.3)
馬耳他 Malta	90 (+18.7)	976 (+28.2)	20 (-37.5)	131 (-51.7)
荷蘭 Netherlands	50 (+30.8)	637 (+22.0)	10 (N.A.)	29 (N.A.)
挪威 Norway	60 (+3.4)	818 (-8.7)	10 (-44.4)	69 (-53.8)
巴拿馬 Panama R	1 150 (-8.9)	9 658 (-3.0)	180 (-38.6)	865 (-21.2)
菲律賓 Philippines	60 (-6.8)	357 (+17.2)	* (-57.1)	25 (-42.7)
俄羅斯聯邦 Russian F	40 (+2.4)	231 (+18.0)	10 (-40.0)	54 (-2.7)
新加坡 Singapore R	240 (-4.0)	2 026 (-11.7)	20 (-34.6)	92 (-28.2)
聖文森特和格林納丁斯 St Vincent and Grenadines	80 (+1.3)	270 (-15.7)	20 (+11.1)	74 (+30.8)
台灣 Taiwan	90 (-4.4)	828 (+0.2)	0 (0.0)	0 (0.0)
英國 United Kingdom	60 (+14.0)	1 003 (+33.7)	10 (+66.7)	178 (+199.3)
美國 USA	30 (-37.5)	503 (-25.1)	* (-60.0)	22 (-58.4)
大洋洲合眾國 US Oceania	40 (+55.6)	589 (+4.3)	10 (N.A.)	58 (N.A.)
其他 Others	310 (-1.0)	2 883 (+5.2)	40 (-17.0)	222 (+49.4)
總計 Total	4 550 (-4.9)	36 268 (+1.9)	2 890 (-13.7)	4 233 (-1.3)

註釋： * 少於 5
Notes : * Less than 5

N.A. 不適用
N.A. Not Applicable

表 6

TABLE 6

2000 年 按船舶類型分析離港船隻的平均在港停留時間
Average Time in Port for Vessels Departing Hong Kong by Ship Type, 2000

船舶類型 Ship Type	平均在港停留時間 (小時) Average Time in Port (hours)	
	遠洋輪船 Ocean Vessels	內河船隻 River Vessels
化學品運載船 Chemical Carrier/Tanker	52	28
普通貨船 Conventional Cargo Vessel	66	28
郵船 / 渡輪 Cruise/Ferry	13	N.A.
散裝乾貨船 Dry Bulk Carrier	73	66
漁船 / 魚類加工船 Fishing/Fish Processing Vessel	149	N.A.
全槽格式貨櫃船 Fully Cellular Container Vessel	24	23
液化氣體運載船 Gas Carrier/Tanker	21	9
駁船 / 躉船 / 貨艇 Lighter/Barge/Cargo Junk	57	65
油輪 Oil Tanker	44	40
遊樂船隻 Pleasure Vessel	115	N.A.
滾裝船 Roll On/Roll Off	10	16
半貨櫃船 Semi-container Vessel	50	29
拖船 Tug	115	56
其他 Others	83	57
總計 Total	40	38

註釋： N.A. 不適用

Note : N.A. Not Applicable

表 7
TABLE 7

2000 年 經貨櫃碼頭的遠洋輪船統計資料
Statistics on Ocean Vessels Calling Container Terminals, 2000

項目 Item	數目 Number	比重百分率 Percentage Share
抵港遠洋輪船在貨櫃碼頭處理貨櫃的船次 Ocean Vessel Arrivals with Containers handled in Container Terminals	(%) 11 030 (+10.3)	100.0%
- 按載重噸位分析 - Analysed by DWT		
少於 10 000 載重噸 Under 10 000 DWT	1 690 (+0.2)	15.3%
10 000 - 19 999 載重噸 10 000 - 19 999 DWT	2 240 (+15.7)	20.3%
20 000 - 29 999 載重噸 20 000 - 29 999 DWT	2 070 (+16.6)	18.8%
30 000 - 39 999 載重噸 30 000 - 39 999 DWT	1 020 (+16.6)	9.2%
40 000 載重噸及以上 40 000 DWT and above	4 020 (+7.6)	36.4%
- 按主要貿易地區 / 國家分析 (根據所申報的上一個停靠港口) - Analysed by Principal Trading Region / Country (Based on Reported Previous Port)		
非洲 Africa	20 (+45.5)	0.1%
澳洲、新西蘭 Australia and New Zealand	90 (+709.1)	0.8%
中美洲、南美洲 Central and South America	20 (+53.8)	0.2%
中國 China	2 300 (+14.8)	20.9%
日本 Japan	910 (+0.4)	8.2%
中東 Middle East	* (-88.6)	@
北美洲 North America	510 (+82.3)	4.6%
東南亞 South East Asia	3 310 (+8.3)	30.0%
台灣 Taiwan	3 580 (+5.1)	32.5%
西歐 Western Europe	210 (+38.9)	1.9%
其他 Others	90 (-33.1)	0.8%
- 平均在港停留時間 (小時) - Average Time in Port (hours)	15	

註釋： * 少於 5 @ 少於 0.05%
Notes : * Less than 5 @ Less than 0.05%

表 8

TABLE 8

2000 年 按夏季吃水分析抵港遠洋輪船
Ocean Vessel Arrivals by Summer Draft, 2000

夏季吃水 (米) Summer Draft (m)	抵港船次 No. of Vessel Arrivals	比重百分率 Percentage Share
	(%)	
少於 2.00 Under 2.00	2 040 (+54.8)	5.4%
2.00 - 3.99	7 000 (-25.8)	18.6%
4.00 - 5.99	7 220 (+9.1)	19.2%
6.00 - 7.99	5 460 (-9.9)	14.5%
8.00 - 9.99	7 200 (+11.8)	19.1%
10.00 - 11.99	4 240 (+15.9)	11.3%
12.00 - 13.99	3 450 (+0.3)	9.2%
14.00 - 15.99	880 (+63.6)	2.3%
16.00 - 17.99	160 (+162.9)	0.4%
18.00 及以上 18.00 and above	30 (+277.8)	0.1%
總計 Total	37 680 (+0.3)	100.0%

表 9

TABLE 9

2000 年 按船隻長度分析抵港遠洋輪船
Ocean Vessel Arrivals by Vessel Length, 2000

船隻長度 (米) Vessel Length (m)	抵港船次 No. of Vessel Arrivals	比重百分率 Percentage Share
	(%)	
少於 50.0 Under 50.0	6 120 (-27.7)	16.2%
50.0 - 99.9	10 130 (+8.6)	26.9%
100.0 - 149.9	7 260 (+6.4)	19.3%
150.0 - 199.9	8 300 (+8.7)	22.0%
200.0 - 249.9	2 430 (+2.0)	6.5%
250.0 - 299.9	3 260 (+16.6)	8.7%
300.0 - 349.9	190 (+14.6)	0.5%
總計 Total	37 680 (+0.3)	100.0%

表 10

TABLE 10

2000 年 按主要來港原因分析抵港遠洋輪船
Ocean Vessel Arrivals by Main Reason of Call, 2000

主要來港原因 Main Reason of Call	抵港船次 No. of Vessel Arrivals	比重百分率 Percentage Share
	(%)	
補充燃料 Bunkers	110 (-0.9)	0.3%
人事轉動 (乘客、船員等) Change of Personnel (Passengers, Crew, etc.)	2 420 (+47.4)	6.4%
卸貨 Discharging Cargo	4 710 (+28.2)	12.5%
緊急修理、非例行入乾塢 Emergency Repair, Non-routine Dry Docking	60 (+48.6)	0.1%
裝貨、卸貨 Loading and Discharging Cargo	22 060 (+9.7)	58.5%
裝貨 Loading Cargo	5 800 (-39.2)	15.4%
例行入乾塢 Routine Dry Docking	10 (-7.1)	@
交換文件 Switch Documents	980 (+43.4)	2.6%
船上用品補給 (燃料除外) Taking Stores (Except Bunkers)	200 (-37.4)	0.5%
其他 Others	1 330 (-7.6)	3.5%
總計 Total	37 680 (+0.3)	100.0%

註釋: @ 少於 0.05%

Note: @ Less than 0.05%

表 11

TABLE 11

2000 年 港澳客運碼頭和中國客運碼頭的抵港 / 離港統計資料
 Statistics on Arrivals/Departures at Macau Ferry Terminal and China Ferry Terminal, 2000

來往 From/To	服務種類 Type of Service	提供服務的 船隻 / 直升機數目 No. of Vessels/ Helicopters in Service	抵港統計資料 Statistics on Arrivals				離港統計資料 Statistics on Departures			
			航次 No. of Trips		淨註冊噸位 (千位數) NRT (‘000)		航次 No. of Trips		淨註冊噸位 (千位數) NRT (‘000)	
		(%)	(%)	(%)	(%)	(%)	(%)	(%)	(%)	
澳門 Macau	雙體船 Catamaran	18 (0.0)	14 770 (-3.5)	2 691 (-3.4)	14 780 (-3.5)	2 692 (-3.4)				
	噴射飛翼船 Jetfoil	16 (0.0)	18 940 (+1.2)	1 884 (-0.1)	18 950 (+1.2)	1 885 (-0.1)				
	直升機 Helicopter	4 (0.0)	8 720 (+6.5)	N.A. (N.A.)	8 720 (+6.5)	N.A. (N.A.)				
小計 - 澳門 Sub-total - Macau			42 430 (+0.5)	4 575 (-2.1)	42 440 (+0.5)	4 576 (-2.1)				
澳頭 Aotou	雙體船 Catamaran	3 (+200.0)	10 (-89.6)	1 (-89.6)	10 (-85.4)	1 (-86.3)				
汕頭 Shantou	大船 Conventional Ferry	1 (0.0)	* (-88.2)	9 (-88.2)	* (-88.2)	9 (-88.2)				
汕尾 Shanwei	大船 Conventional Ferry	0 (-100.0)	0 (-100.0)	0 (-100.0)	0 (-100.0)	0 (-100.0)				
廈門 Xiamen	大船 Conventional Ferry	1 (0.0)	30 (-50.0)	102 (-51.0)	30 (-50.0)	102 (-50.8)				
小計 - 中國沿岸港口 Sub-total - Mainland Coastal Ports			40 (-77.8)	112 (-63.1)	40 (-76.6)	112 (-62.9)				
公海 Open Sea	大船 Conventional Ferry	1 (0.0)	300 (+24.4)	1 118 (+15.4)	300 (+24.4)	1 117 (+15.3)				
小計 - 公海 Sub-total - Open Sea			300 (+24.4)	1 118 (+15.4)	300 (+24.4)	1 117 (+15.3)				
斗門 Doumen	雙體船 Catamaran	10 (+100.0)	380 (-0.5)	36 (-2.6)	380 (0.0)	36 (-1.9)				
高明 Gaoming	雙體船 Catamaran	5 (+66.7)	610 (+59.2)	102 (+53.7)	610 (+58.9)	102 (+53.5)				
公益 Gongyi	雙體船 Catamaran	1 (-66.7)	200 (-36.7)	36 (-36.7)	200 (-36.9)	37 (-36.8)				
廣州 Guangzhou	雙體船 Catamaran	13 (0.0)	720 (-4.0)	129 (-4.8)	720 (-1.4)	129 (-2.0)				
	噴射飛翼船 Jetfoil	0 (-100.0)	0 (-100.0)	0 (-100.0)	0 (-100.0)	0 (-100.0)				
鶴山 Heshan	雙體船 Catamaran	4 (+100.0)	150 (-55.0)	24 (-55.0)	150 (-55.0)	24 (-55.1)				
江門 Jiangmen	雙體船 Catamaran	3 (0.0)	1 180 (+3.2)	146 (+2.2)	1 180 (+3.2)	146 (+2.2)				
蓮花山 Lianhuashan	雙體船 Catamaran	7 (-36.4)	1 130 (-0.5)	195 (-1.3)	1 130 (-0.4)	195 (-1.2)				
南沙 Nansha	雙體船 Catamaran	6 (+20.0)	2 410 (+3.2)	457 (+5.9)	2 410 (+3.7)	457 (+6.5)				
平州 Pingzhou	雙體船 Catamaran	6 (-14.3)	830 (-2.9)	138 (-2.7)	830 (-2.6)	137 (-2.3)				

表 11 - 續
TABLE 11 - Cont'd

來往 From/To	服務種類 Type of Service	提供服務的 船隻 / 直升機數目 No. of Vessels/ Helicopters in Service	抵港統計資料 Statistics on Arrivals			離港統計資料 Statistics on Departures		
			航次 No. of Trips	淨註冊噸位 (千位數) NRT (‘000)	(%)	航次 No. of Trips	淨註冊噸位 (千位數) NRT (‘000)	(%)
容奇	雙體船							
Rongqi	Catamaran	0 (-100.0)	0 (-100.0)	0 (-100.0)	0 (-100.0)	0 (-100.0)	0 (-100.0)	
三埠	雙體船							
Sanbu	Catamaran	5 (+25.0)	390 (-7.1)	62 (-6.8)	390 (-6.5)	62 (-6.1)		
蛇口	雙體船							
Shekou	Catamaran	4 (-55.6)	3 570 (+26.4)	596 (+30.8)	3 570 (+26.8)	596 (+31.1)		
	氣墊船							
	Hoverferry	2 (0.0)	60 (-96.1)	3 (-96.1)	60 (-96.1)	3 (-96.1)		
深圳	雙體船							
Shenzhen	Catamaran	7 (-12.5)	2 940 (+25.1)	564 (+36.8)	2 940 (+24.1)	564 (+35.7)		
	噴射飛翼船							
	Jetfoil	0 (-100.0)	0 (-100.0)	0 (-100.0)	0 (-100.0)	0 (-100.0)		
順德	雙體船							
Shunde	Catamaran	4 (0.0)	1 560 (+511.0)	267 (+511.5)	1 560 (+511.0)	267 (+511.5)		
太平	雙體船							
Taiping	Catamaran	4 (0.0)	1 120 (+1.4)	174 (-8.8)	1 120 (+1.6)	175 (-8.6)		
梧州	雙體船							
Wuzhou	Catamaran	1 (0.0)	30 (-78.5)	2 (-78.5)	30 (-77.8)	2 (-77.8)		
新會	雙體船							
Xinhui	Catamaran	7 (+16.7)	760 (+0.4)	118 (+0.9)	760 (+0.3)	118 (+0.7)		
新塘	雙體船							
Xintang	Catamaran	4 (+33.3)	360 (-5.0)	54 (-6.3)	360 (-4.8)	54 (-6.0)		
肇慶	雙體船							
Zhaoqing	Catamaran	6 (+50.0)	380 (-6.4)	74 (-1.3)	380 (-5.0)	74 (-0.2)		
中山	雙體船							
Zhongshan	Catamaran	10 (+11.1)	2 700 (+12.2)	448 (+11.0)	2 760 (+13.5)	457 (+12.5)		
珠海	雙體船							
Zhuhai	Catamaran	11 (0.0)	4 630 (+3.9)	752 (+3.6)	4 620 (+3.8)	752 (+3.6)		
小計 - 內河港口 Sub-total - River Trade Ports			26 090 (+0.7)	4 377 (+6.0)	26 160 (+1.0)	4 388 (+6.3)		
總計 Total			68 860 (+0.5)	10 182 (+1.1)	68 930 (+0.6)	10 194 (+1.2)		

註釋： * 少於 5
Notes : * Less than 5

N.A. 不適用
N.A. Not Applicable

表 12
TABLE 12

按客運碼頭分析旅客吞吐量
Passenger Throughput by Ferry Terminal

	<u>1999</u>	<u>2000</u>	旅客人次 (千位數) Passengers ('000) (%)
中國客運碼頭 China Ferry Terminal			
澳門 Macau	877	1 801	(+105.4)
內地 Mainland	5 099	4 913	(-3.6)
公海 Open Sea	106	110	(+3.8)
小計 Sub-total	6 083	6 823	(+12.2)
港澳客運碼頭 Macau Ferry Terminal			
澳門 ** Macau **	8 818	9 071	(+2.9)
內地 Mainland	1 082	1 186	(+9.6)
小計 Sub-total	9 900	10 257	(+3.6)
總計 Total	15 982	17 080	(+6.9)

註釋： ** 乘搭直升機來往澳門旅客人次計算在內 (94 000 人次)

Note: ** The helicopter passengers (94 000) to and from Macau have been included.

資料來源: 客運碼頭組
Data Source: Ferry Terminals Section

表 13

TABLE 13

2000 年 港澳客運碼頭和中國客運碼頭的抵港 / 離港旅客
 Passenger Arrivals/Departures at Macau Ferry Terminal and China Ferry Terminal, 2000

		抵港旅客 Passenger Arrivals				離港旅客 Passenger Departures			
來往 From/To	服務種類 Type of Service	旅客人次 (千位數)		載客率		旅客人次 (千位數)		載客率	
		Passengers (‘000)	(%)	Passenger Load Factor	(%)	Passengers (‘000)	(%)	Passenger Load Factor	(%)
澳門 Macau	雙體船 Catamaran	2 101	(+13.3)	40.7%	(+16.5)	2 611	(+14.3)	50.5%	(+17.5)
	噴射飛翼船 Jetfoil	3 084	(+10.6)	64.7%	(+13.2)	2 980	(+10.5)	62.5%	(+13.1)
	直升機 Helicopter	43	(+31.1)	40.7%	(+23.1)	52	(+28.8)	49.4%	(+20.9)
小計 - 澳門 Sub-total - Macau		5 228	(+11.8)	52.1%	(+14.6)	5 643	(+12.4)	56.2%	(+15.2)
澳頭 Aotou	雙體船 Catamaran	#	(-96.2)	0.2%	(-63.8)	0	(-100.0)	0.0%	(-100.0)
汕頭 Shantou	大船 Conventional Ferry	#	(-89.7)	1.8%	(-12.1)	#	(-85.2)	6.0%	(+26.0)
汕尾 Shanwei	大船 Conventional Ferry	0	(-100.0)	0.0%	(-100.0)	0	(-100.0)	0.0%	(-100.0)
廈門 Xiamen	大船 Conventional Ferry	2	(-71.6)	7.4%	(-43.2)	2	(-68.2)	8.9%	(-36.5)
小計 - 中國沿岸港口 Sub-total - Mainland Coastal Ports		2	(-74.5)	6.5%	(-18.6)	3	(-72.8)	8.0%	(-15.1)
公海 Open Sea	大船 Conventional Ferry	55	(+3.8)	17.5%	(+4.9)	55	(+3.8)	17.5%	(-16.5)
小計 - 公海 Sub-total - Open Sea		55	(+3.8)	17.5%	(+4.9)	55	(+3.8)	17.5%	(-16.5)
斗門 Doumen	雙體船 Catamaran	39	(+18.8)	40.3%	(+20.6)	47	(+3.7)	47.9%	(+4.6)
高明 Gaoming	雙體船 Catamaran	58	(+80.8)	29.4%	(+17.4)	59	(+69.9)	30.0%	(+10.5)
公益 Gongyi	雙體船 Catamaran	15	(-46.8)	23.1%	(-15.9)	16	(-49.9)	23.0%	(-20.6)
廣州 Guangzhou	雙體船 Catamaran	49	(-17.3)	23.5%	(-13.5)	48	(-15.6)	22.8%	(-14.1)
	噴射飛翼船 Jetfoil	0	(-100.0)	0.0%	(-100.0)	0	(-100.0)	0.0%	(-100.0)
鶴山 Heshan	雙體船 Catamaran	21	(-45.8)	45.5%	(+20.0)	20	(-49.9)	43.5%	(+11.1)
江門 Jiangmen	雙體船 Catamaran	125	(-8.5)	36.0%	(-9.7)	128	(-9.7)	36.7%	(-10.9)
蓮花山 Lianhuashan	雙體船 Catamaran	125	(-12.5)	31.2%	(-11.6)	134	(-4.3)	33.5%	(-3.5)
南沙 Nansha	雙體船 Catamaran	408	(+6.1)	44.9%	(+1.7)	426	(+1.1)	46.8%	(-3.7)
平州 Pingzhou	雙體船 Catamaran	138	(-14.5)	49.3%	(-12.0)	93	(-16.2)	33.3%	(-14.0)

表 13 - 續
TABLE 13 - Cont'd

來往 From/To	服務種類 Type of Service	抵港旅客 Passenger Arrivals				離港旅客 Passenger Departures			
		旅客人次 (千位數) Passengers (‘000)		載客率 Passenger Load Factor		旅客人次 (千位數) Passengers (‘000)		載客率 Passenger Load Factor	
			(%)		(%)		(%)		(%)
容奇 Rongqi	雙體船 Catamaran	0	(-100.0)	0.0%	(-100.0)	0	(-100.0)	0.0%	(-100.0)
三埠 Sanbu	雙體船 Catamaran	53	(-2.4)	38.9%	(+5.0)	56	(-0.9)	41.4%	(+5.9)
蛇口 Shekou	雙體船 Catamaran	342	(+48.3)	28.8%	(+12.4)	271	(+67.6)	22.8%	(+26.7)
	氣墊船 Hoverferry	3	(-97.2)	30.7%	(-26.4)	3	(-97.2)	25.5%	(-28.1)
深圳 Shenzhen	雙體船 Catamaran	213	(+12.2)	24.0%	(-15.2)	248	(+10.3)	27.9%	(-15.9)
	噴射飛翼船 Jetfoil	0	(-100.0)	0.0%	(-100.0)	0	(0.0)	0.0%	(0.0)
順德 Shunde	雙體船 Catamaran	271	(+574.7)	50.1%	(+10.5)	227	(+527.9)	42.0%	(+2.9)
太平 Taiping	雙體船 Catamaran	77	(-18.1)	23.5%	(-9.8)	82	(-17.6)	24.9%	(-9.4)
梧州 Wuzhou	雙體船 Catamaran	1	(-68.7)	14.7%	(+45.3)	1	(-68.2)	18.6%	(+43.0)
新會 Xinhui	雙體船 Catamaran	56	(-17.2)	23.0%	(-17.7)	61	(-12.4)	24.9%	(-12.7)
新塘 Xintang	雙體船 Catamaran	24	(-26.2)	25.2%	(-6.7)	25	(-33.6)	26.1%	(-16.3)
肇慶 Zhaoqing	雙體船 Catamaran	52	(-5.4)	39.0%	(+0.5)	59	(-1.0)	43.7%	(+3.6)
中山 Zhongshan	雙體船 Catamaran	398	(-0.3)	41.6%	(-12.9)	434	(-0.7)	44.4%	(-14.4)
珠海 Zhuhai	雙體船 Catamaran	577	(+5.9)	36.9%	(+2.0)	611	(+1.7)	39.0%	(-2.0)
小計 - 內河港口 Sub-total - River Trade Ports		3 047	(-0.6)	35.2%	(-4.0)	3 047	(-1.7)	35.1%	(-5.4)
總計 Total		8 332	(+6.8)	43.8%	(+6.9)	8 748	(+6.9)	45.9%	(+6.5)

註釋： # 少於 500
Note : # Less than 500

表 14

TABLE 14

2000年 按主要貨物裝卸地點分析貨櫃吞吐量
Container Throughput by Main Cargo Handling Location, 2000

千個標準貨櫃單位

'000 T.E.U.s

類別 Category	貨櫃碼頭 Container Terminals			貨櫃碼頭以外 Other than Container Terminals			總計 Total
	遠洋 Ocean	內河 River	小計 Sub-total	遠洋 Ocean	內河 River	小計 Sub-total	
離港 OUTWARD	(%)	(%)	(%)	(%)	(%)	(%)	(%)
載貨貨櫃 Laden Container	5 434 (+12.4)	313 (+31.3)	5 747 (+13.3)	1 128 (+8.8)	1 121 (+14.1)	2 249 (+11.4)	7 996 (+12.8)
空貨櫃 Empty Container	248 (-3.9)	101 (-22.8)	349 (-10.2)	205 (-20.9)	568 (+27.8)	773 (+9.9)	1 122 (+2.7)
小計 SUB-TOTAL	5 683 (+11.6)	414 (+12.2)	6 096 (+11.6)	1 333 (+2.8)	1 689 (+18.4)	3 022 (+11.0)	9 118 (+11.4)
抵港 INWARD							
載貨貨櫃 Laden Container	3 429 (+6.5)	434 (+19.6)	3 862 (+7.8)	1 528 (+12.4)	861 (+12.5)	2 390 (+12.4)	6 252 (+9.5)
空貨櫃 Empty Container	1 553 (+29.6)	91 (+73.8)	1 644 (+31.5)	171 (-6.0)	912 (+3.1)	1 083 (+1.5)	2 727 (+17.7)
小計 SUB-TOTAL	4 982 (+12.7)	524 (+26.4)	5 506 (+13.9)	1 700 (+10.2)	1 773 (+7.5)	3 473 (+8.8)	8 979 (+11.9)
合計 OVERALL							
載貨貨櫃 Laden Container	8 863 (+10.0)	746 (+24.2)	9 609 (+11.0)	2 656 (+10.8)	1 983 (+13.4)	4 639 (+11.9)	14 248 (+11.3)
空貨櫃 Empty Container	1 802 (+23.7)	192 (+4.8)	1 993 (+21.6)	376 (-14.7)	1 480 (+11.3)	1 856 (+4.8)	3 850 (+12.9)
總計 TOTAL	10 664 (+12.1)	938 (+19.7)	11 603 (+12.7)	3 033 (+6.8)	3 462 (+12.5)	6 495 (+9.8)	18 098 (+11.6)

表 15
TABLE 15

2000 年 按貨櫃碼頭以外的主要貨物裝卸地點分析裝卸的貨櫃
Containers Discharged/Loaded at Main Cargo Handling Locations Other than Container Terminals, 2000

千個標準貨櫃單位

'000 T.E.U.s

主要貨物裝卸地點 (貨櫃碼頭以外) Main Cargo Handling Location (Other than Container Terminals)	遠洋 Ocean				內河 River				總計 Total	
	卸下 Discharged		裝上 Loaded		卸下 Discharged		裝上 Loaded		載貨貨櫃 Laden	空貨櫃 Empty
	載貨貨櫃 Laden	空貨櫃 Empty	載貨貨櫃 Laden	空貨櫃 Empty	載貨貨櫃 Laden	空貨櫃 Empty	載貨貨櫃 Laden	空貨櫃 Empty		
	(%)	(%)	(%)	(%)	(%)	(%)	(%)	(%)	(%)	(%)
碇泊處 Anchorage	1 024 (+12.8)	119 (-9.5)	746 (+7.6)	127 (-9.0)	44 (+34.0)	30 (+37.7)	83 (+46.0)	26 (+187.0)	1 898 (+12.2)	303 (+0.1)
浮泡 Buoys	427 (+21.5)	20 (+19.3)	268 (+14.8)	64 (-39.7)	40 (+28.7)	20 (-9.2)	90 (+43.1)	24 (+600.4)	826 (+21.5)	129 (-13.6)
公眾貨物裝卸區 Public Cargo Working Areas	10 (-84.0)	15 (-17.4)	47 (+40.6)	5 (+5.7)	543 (+16.2)	667 (+4.4)	607 (-0.3)	299 (+23.2)	1 207 (+2.9)	987 (+9.0)
其他泊位和倉庫碼頭 Other Berths and Wharves	66 (+83.1)	17 (+10.5)	66 (-13.0)	8 (+7.5)	233 (§)	194 (-3.2)	342 (+34.1)	219 (+15.5)	708 (+17.8)	438 (+6.1)
總計 Total	1 528 (+12.4)	171 (-6.0)	1 128 (+8.8)	205 (-20.9)	861 (+12.5)	912 (+3.1)	1 121 (+14.1)	568 (+27.8)	4 639 (+11.9)	1 856 (+4.8)

註釋： § 在 ±0.05%之內

Note : § Within ±0.05%

表 16
TABLE 16

2000 年 在公眾貨物裝卸區裝卸的貨物 ##
Cargo Loaded/Discharged at PCWAs, 2000 ##

公眾貨物裝卸地區 PCWA Location	海旁沿岸長度 (米) Seafrontage (Metres)	裝貨重量 (公噸) Cargo Loaded (Tonnes)				卸貨重量 (公噸) Cargo Discharged (Tonnes)				總貨重量 (公噸) Total Cargo (Tonnes)	貨物吞吐量年率 (以每米海旁沿岸 計算的噸數) Throughput Rate (Tonnes Per Metre of Seafrontage)
		中國 China	澳門 Macau	其他 Others	小計 Sub-total	中國 China	澳門 Macau	其他 Others	小計 Sub-total		
屯門 Tuen Mun	662	997 649	-	1 071 827	2 069 476	414 424	-	295 909	710 332	2 779 809	4 199.11
藍巴勒海峽 Rambler Channel	993	-	-	1 908 684	1 908 684	185 047	76 663	788 446	1 050 156	2 958 841	2 979.70
昂船洲 Stonecutters Island	684	450 192	56 053	190 285	696 530	604 434	196 886	397 419	1 198 740	1 895 270	2 770.86
油蔴地 Yaumatei	1 224	496 346	392 332	514 153	1 402 830	1 252 567	25 860	1 247 409	2 525 836	3 928 667	3 209.69
觀塘 Kwun Tong	912	42 842	13 831	456 128	512 801	135 426	6 625	1 250 327	1 392 379	1 905 180	2 089.01
茶果嶺 Cha Kwo Ling	938	219 205	25 069	302 713	546 987	483 686	44 754	616 692	1 145 132	1 692 119	1 803.97
灣仔 Wan Chai	800	19 644	-	28 220	47 864	128 677	-	238 063	366 740	414 604	518.25
西環 Western District	1 543	43 138	118 321	60 700	222 159	97 348	33 990	145 667	277 005	499 163	323.50
總計 TOTAL	7 756	2 269 016	605 606	4 532 710	7 407 332	3 301 609	384 778	4 979 932	8 666 320	16 073 652	2 072.42

註釋：## 2000 年度的公眾貨物裝卸地區貨物吞吐量是根據新的方法估計。因此，2000 年的數字不能與較早年份的數字作直接比較。

Note: ## The cargo throughput of PCWAs in 2000 are estimated based on a new method. Therefore, the figures for 2000 are not directly comparable to those for the earlier years.

表 17
TABLE 17

船舶安全監督統計資料
Statistics on Ship Safety

A. 貨船安全統計數字 Cargo Ships Safety Statistics	1999	2000
I. 註冊貨船數目 No. of Cargo Ships in the Register		
a. 所管理公約貨船數目 (截至年底) No. of convention cargo ships under the Register (as at year end)	276*	349
b. 所管理公約貨船總噸位 (截至年底) Gross register tonnage of convention cargo ships under the Register (as at year end)	8 224 456*	10 294 447
c. 新申請在香港註冊公約貨船數目 No. of convention cargo ships newly registered	122*	123
d. 新申請在香港註冊公約貨船總噸位 Gross register tonnage of convention cargo ships newly registered	3 012 301*	3 633 509
II. 海事處註冊貨船品質審查 / 檢驗數目 No. of Hong Kong registered cargo ships quality checked/inspected by MD		
a. 海事處品質審查的註冊貨船數目 Quality checks on Hong Kong registered cargo ships by MD	53*	100
b. 海事處品質檢驗 / 稽核貨船數目 No. of Flag State Quality Control inspections/audits	13/6	15/6
c. 審核船體、機械和設備圖則數目 No. of plans examined in respect of hull, machinery and equipment	662	751
III. 貨船設備安全證明書 Cargo Ship Safety Equipment Certificate		
a. 所簽發的豁免證明書數目 No. of exemption certificates issued	62	74
b. 應其他國家機關要求而檢驗的外來船舶，以簽發設備安全證明書 Foreign ships surveyed at the request of other national authorities for the issue of SEC	0	0
IV. 貨船無線電安全證明書 Cargo Ship Safety Radio Certificate		
a. 所簽發的豁免證明書數目 No. of exemption certificates issued	129	122
b. 應其他國家機關要求而檢驗的外來船舶，以簽發無線電安全證明書 Foreign ships surveyed at the request of other national authorities for the issue of SRC	3	4
V. 其他 Others		
a. 所簽發的《海員培訓、發證和值班標準國際公約》最低安全配員證書 STCW Minimum Safe Manning Certificate issued	128	152
b. 對構造安全、設備安全、無線電安全證明書的監察，包括中期檢驗 Safety Construction, Equipment and Radio Certificates monitored including intermediate surveys	804	708
c. 對國際載重線證明書的監察，包括定期檢驗 International Load Line Certificate monitored including periodic surveys	268	148
d. 對國際防止油污證書的監察 - 續期、年度 / 中期檢驗 International Oil Pollution Prevention Certificate monitored - renewal, annual/intermediate surveys	268	180
e. 對新船公司所作的國際安全管理稽核 ISM audits of new shipping companies	11	8
f. 其他檢驗(例如合格證書等) Other surveys (e.g. Certificates of Fitness etc)	0	6

註釋 : * 修訂數字
Note : * Revised figure

表 17 - 續
TABLE 17 - Cont'd

B. 客船安全統計數字 Passenger Ships Safety Statistics	1999	2000
所管理公約客船數目 No. of convention passenger ships administered	37	38
所管理公約客船總噸位 Gross register tonnage of convention passenger ships administered	14 619	15 388
I. 客船安全證明書 Passenger and Safety Certificates		
a. 客船安全證明書 - 國際航線 PSSC - International Voyage	0	0
b. 客船安全證明書 - 短程國際航線 (內河航限) PSSC - Short International Voyage (River Trade Limits)	35	35
c. 延長客船安全證明書有效期 Extensions to Passenger and Safety Certificate	7	11
d. 客船安全證明書檢驗船舶總數 Total number of vessels surveyed for P&S Certificate	42	46
e. 受檢驗的客船無線電裝置 Passenger ship radio installations surveyed	42	46
f. 所簽發的載重線證書數目 No. of Load Line Certificate issued	4	0
g. 所簽發的載重線豁免證書數目 No. of Load Line Exemption Certificate issued	31	13
h. 所簽發的國際防止油污證書及增補數目 No. of IOPP Certificate with Supplement issued	3	3
i. 所簽發的國際防止油污豁免證書數目 No. of IOPP Exemption Certificate issued	-	-
j. 所簽發的最低安全配員證書數目 No. of Minimum Safe Manning Certificate issued	0	0
k. 對船公司所作的安全管理稽核 ISM audits of shipping companies	3	2
l. 對船舶所作的安全管理稽核 ISM audits of ships	3	32
m. 所簽發的 ISM 符合證明數目 No. of ISM Document of Compliance (DOC) issued	0	2
n. 所簽發的 ISM 安全管理證明書數目 No. of ISM Safety Management Certificate (SMC) issued	3	17
o. 所簽發的臨時 ISM 安全管理證明書數目 No. of Interim ISM Safety Management Certificate (SMC) issued	0	32
II. 檢查雜項圖則和設備 Inspection of miscellaneous plans and equipment		
a. 審核客船船體、機械和設備圖則 Plans examined for hull, machinery and equipment of passenger ships	167	1 177
b. 檢驗船舶以備拖帶或付運 Surveys for vessels clearing under tow or delivery	60	33
c. 驗證航行燈(電、油) Navigation lanterns (electric / oil) certified	0	0
d. 檢驗備有紀錄的充氣救生筏 / 前往檢驗次數 Inflatable life rafts with log sheets surveyed/ No. of survey visits	391/120	331/97
e. 經檢查和蓋章的救生圈 Life buoys, inspected and stamped	0	0
f. 經檢查和蓋章的救生衣 Life jackets, inspected and stamped	0	0
g. 簽發檢查證明書、客船續驗、雜項檢驗 / 檢查 Certificate of Inspection issued, passenger ships continuous surveys, miscellaneous surveys/inspections	127	200

表 17 - 續
TABLE 17 - Cont'd

C. 港口國監督統計數字 Port State Control Statistics	<u>1999</u>	<u>2000</u>
在香港特別行政區港口內進行的港口國監督檢查：		
Port State Control Inspections in the harbour of Hong Kong Special Administrative Region:		
a. 在履行身為港口國監督委員而對《東京諒解備忘錄》應有的責任下，受港口國監督檢查的個別外來船舶數目 Number of individual foreign ships inspected under the obligation to Tokyo MOU, as a member Port State of the Committee	991	929
b. 對外來船舶進行港口國監督檢查(包括複檢)總數 Total number of Port State Control inspections carried out for foreign ships, including re-inspections	1 056	999
c. 被扣留在香港不符合標準船舶的數目 Number of sub-standard ships detained in Hong Kong	158	97

資料來源:	(A) (I)	船舶註冊及商船海員管理處	(A) (I)	Shipping Registry and Mercantile Marine Office
Data Sources:	(A) (II-V)	貨船安全組	(A) (II-V)	Cargo Ships Safety Section
	(B)	客船安全組	(B)	Passenger Ships Safety Section
	(C)	港口國監督組	(C)	Port State Control Section

表 18
TABLE 18

本地船舶安全統計資料
Statistics on Local Vessels Safety

A. 檢驗和檢查載客小輪、渡輪船隻、貨船、水上食肆、機動帆船和水艇等
Surveys and Inspections of Passenger Launches, Ferry Vessels, Cargo Vessels, Marine Restaurants, Mechanised Junks and Water Boats, etc.

	<u>1999</u>	<u>2000</u>
a. 檢驗載客小輪和渡輪船隻，以簽發驗船證明書(所發證明書數目) Survey for the Issue of Certificate of Survey for Passenger Launches and Ferry Vessels (No. of Certificates Issued)	660	615
b. 檢查水上食肆，以簽發檢查證書(所發證書數目) Inspection for the Issue of Certificate of Inspection for Floating Restaurants (No. of Certificates Issued)	3	N.A.
c. 檢查西式雜類船隻，以簽發檢查證書(所發證書數目) Inspection for the Issue of Certificate of Inspection for Western Type Miscellaneous Craft (No. of Certificates Issued)	279	267
d. 檢查新建非自航駁船，以簽發乾舷勘定證書(所發證書數目) Inspection for the Issue of Certificate of Freeboard Assignment to New Dumb Lighters (No. of Certificates Issued)	7	N.A.
e. 檢查非自航駁船，以簽發/批註乾舷勘定證書(所發證書 / 批註數目) Inspection for the Issue / Endorsement of Freeboard Assignment Certificate for Dumb Lighters (No. of Certificates Issued / Endorsement)	953	637
f. 運載危險貨物的認可聲明書 Declarations of Fitness Issued for Carriage of Dangerous Goods	206	190
g. 噸位丈量，以便註冊 Tonnage Measurement for Purpose of Registration	4	N.A.
h. 調查船舶傾斜度和穩性 Vessels Inclined and Stability Investigated	45	32
i. 渡輪船隻和水上食肆定期安全檢查(抽查) Regular Safety Inspection on Ferry Vessels and Floating Restaurants (Spot Checks)	72	35
j. 安全設備 - 檢查紀錄 (驗船表格 183) Safety Equipment - Records of Inspection (Survey 183)	32	3
k. 安全檢驗停留不動的船隻 Safety Inspection for Stationary Vessels	231	151
l. 檢驗因碰撞而破損的船隻 Inspection for Damaged Local Vessels after Collision	25	18
m. 檢驗其他政府部門的船隻 Inspection of Vessels for other Government Departments	52	157
n. 載重線的續期 / 年度檢驗 Renewal/Annual Surveys for Load Line	27	55

註釋： N.A. 不適用
Note: N.A. Not Applicable

表 18 - 續
TABLE 18 - Cont'd

A. 檢驗和檢查載客小輪、渡輪船隻、貨船、水上食肆、機動帆船和水艇等
Surveys and Inspections of Passenger Launches, Ferry Vessels, Cargo Vessels, Marine Restaurants, Mechanised Junks and Water Boats, etc.

	<u>1999</u>	<u>2000</u>
o. 簽發香港防油污證書前檢驗 Surveys for the Issue of Hong Kong Oil Pollution Prevention Certificates	35	15
p. 海外檢查 (人日/船隻數目) Overseas Inspections (Mandays/Number of Vessels)	401/107	220/79
q. 在本港檢驗船隻的數目 (不包括停留不動的船隻) Number of Vessels Inspected Locally (excluding Stationary Vessels)	4 798	3 882
r. 簽發檢查證書的檢查數目 (亞洲式船隻) Number of Inspections for Issue of Certificate of Inspection (Asiatic Type Vessel)	3 853	3 000
s. 預約檢查數目 Number of Inspections Made by Appointment	5 433	N.A.
t. 審核本地船隻船體、機械和設備圖則 Plans of Hull, Machinery and Equipment Examined for Local Craft	5 793	4 095

B. 檢查正在修理、拆卸或從事裝卸貨物的船舶、調查海上工業意外事故
Inspections of Vessels Undergoing Repair or Demolition or Engaged in Cargo Handling, Investigations of Marine Industrial Accidents

	<u>1998</u>	<u>1999</u>	<u>2000</u>
a. 簽發修船許可證 Letters of Permission to Undertake Repairs Issued	2 961	2 581	2 979
b. 檢查正在修理的船舶 Inspections of Vessels Undergoing Repair	1 597	1 474	1 586
c. 檢查海事工程船舶 Inspections of Vessels Engaged in Marine Construction	N.A.	N.A.	149
d. 檢查遠洋船裝卸貨物工具 Cargo Gear Inspections on Ocean-going Vessels	289	547	446
e. 檢查遠洋船裝卸貨物 Stevedoring Inspections on Ocean-going Vessels	1 753	2 865	4 057
f. 檢查駁船裝卸貨物工具 Cargo Gear Inspections on Lighters	3 111	2 886	2 762
g. 檢查駁船裝卸貨物 Stevedoring Inspections on Lighters	370	712	1 394
h. 調查致命的海事工業意外 Marine Industrial Fatal Accidents Investigated	5	8	6

註釋： N.A. 不適用
Note: N.A. Not Applicable

表 18 - 續
TABLE 18 - Cont'd

B. 檢查正在修理、拆卸或從事裝卸貨物的船舶、調查海上工業意外事故

Inspections of Vessels Undergoing Repair or Demolition or Engaged in Cargo Handling, Investigations of Marine Industrial Accidents

	<u>1998</u>	<u>1999</u>	<u>2000</u>
i. 調查致命的非海事工業意外 Non-marine Industrial Fatal Accidents Investigated	1	0	0
j. 調查嚴重意外 Serious Accidents Investigated	21	32	30
k. 調查嚴重意外 (無傷亡) Serious Incidents (No Casualty) Investigated	1	4	3
l. 查詢非嚴重意外 Non-serious Accidents Enquiry	446	379	375
m. 轉介檢控小組的個案 Cases Referred to Prosecutions Unit	2	2	2
n. 發出警告信 Warning Letters Issued	106	67	58
o. 發出指令 Directions Issued	54	54	84
p. 修船意外總數 Total Ship Repair Accidents	93 (53)	77 (53)	** (38)
q. 裝卸貨物意外總數 Total Cargo Handling Accidents	436 (245)	520 (342)	** (393)
r. 海事工程意外總數 Total Marine Construction Accidents	N.A.	13 (7)	** (15)
s. 出版安全小冊子數目 Number of Safety Pamphlets Published	-	-	2
t. 出版安全單張數目 Number of Safety Leaflets Published	-	-	3
u. 出版安全指南數目 Number of Safety Guides Published	-	-	-
v. 出版安全海報/貼紙數目 Number of Safety Posters/Stickers Published	1	-	-
w. 檢查貨櫃 Containers Inspection	9 032	8 539	4 416

註釋：() 9個月(即1月至9月期間)的統計數字
N.A. 不適用
** 未有2000年全年的數字

Notes: () Figures cover the 9 month period from January-September only
N.A. Not Applicable
** Figures for the whole year of 2000 not yet available

表 18 - 續
TABLE 18 - Cont'd

C. 所失的香港註冊和持牌船舶

Loss of Vessels Registered and Licensed in Hong Kong

船舶類型 Class of Vessel	該類船隻數目 Number of Vessel		失船數目 Number Lost		失船百分率 Percentage Lost	
	1999	2000	1999	2000	1999	2000
a. IMO 公約船舶 (香港註冊) IMO Convention (HK Registered)	276	349	-	1	-	0.3
b. 拖網漁船 Trawlers	-	-	-	N.A.	-	N.A.
c. 小輪和渡輪 (領有牌照) Launches and Ferries (Licensed)	682	707	-	N.A.	-	N.A.
<u>雜類船隻 MISCELLANEOUS CRAFT</u>						
d. 第 1 類 (客船) Class 1 (Passenger)	158	147	-	N.A.	-	N.A.
e. 第 2 類 (駁船和躉船) Class 2 (Lighters and Barges)	1 271	1 280	2	N.A.	0.2	N.A.
f. 第 4 類 (漁船) Class 4 (Fishing)	1 062	1 091	-	N.A.	-	N.A.
g. 第 4 類 (雜類船隻) Class 4 (Miscellaneous)	521	526	3	N.A.	0.6	N.A.
h. 第 5 類 (營業船) Class 5 (Trading)	52	42	-	N.A.	-	N.A.
i. 第 6 類 (漁船) Class 6 (Fishing)	2 352	2 311	10	N.A.	0.4	N.A.
j. 第 3、第 7、第 8 類 (停留不動的船、浮式工場、水上食肆) Class 3, 7 & 8 (Stationary, Floating Workshops, Restaurant)	216	223	-	N.A.	-	N.A.
k. 遊樂船隻 Pleasure Vessels	4 200	4 416	6	N.A.	0.1	N.A.
l. 政府船隻 Government Vessels	-	-	-	N.A.	-	N.A.
m. 其他 Others	2 471	2 595	-	N.A.	-	N.A.
總計 Total	13 261	13 687	21	N.A.	0.2	N.A.

D. 2000 年 海上意外事故

Marine Accidents in 2000

意外事故類別 Type of Accident	本港水域範圍以內 Within Hong Kong Waters				本港水域範圍以外 Outside Hong Kong Waters			
	個案數目 No. of Case	死亡人數 Persons Killed	受傷人數 Persons Injured	失蹤人數 Persons Missing	個案數目 No. of Case	死亡人數 Persons Killed	受傷人數 Persons Injured	失蹤人數 Persons Missing
碰撞 Collision	260	-	33	-	15	8	5	3
接觸 Contact	42	-	15	-	9	4	3	-
擱淺 / 觸礁 Stranding/Grounding	26	-	-	-	8	-	-	-
沉沒 / 入水 Foundering/Sinking	29	-	-	-	5	-	-	-
火警 / 爆炸 Fire/Explosion	24	2	4	-	8	1	13	-
翻沉 / 傾斜 Capsized/Listing	13	-	2	-	1	-	-	-
其他 Others	26	-	1	-	7	-	-	-
總計 Total	420	2	55	-	53	13	21	3

註釋： N.A. 不適用
Note: N.A. Not Applicable

表 18 - 續
TABLE 18 - Cont'd

E. 海上意外事故調查
Marine Accident Investigation

項目	Items	1999	2000
調查意外事故	Accidents Investigated	56	20
本地海事研訊 (《船舶及港口管制條例》)	Local Marine Inquiries (Shipping and Port Control Ordinance)	4	2
初步研訊(《商船條例》)	Preliminary Inquiries (Merchant Shipping Ordinance)	2	1
領港研訊(《領港條例》)	Pilotage Inquiries (Pilotage Ordinance)	-	-
海事法庭	Marine Courts	-	-
調查委員會	Board of Inquiry	-	-
對調查委員會裁決提出上訴	Appeal against the decision by Board of Inquiry	-	-

資料來源: (A) 本地船舶安全組 (A) Local Vessels Safety Section
Data Sources: (B) 海事工業安全組 (B) Marine Industrial Safety Section
(C) (a) 船舶註冊及商船海員管理處 (C) (a) Shipping Registry and Mercantile Marine Office
(b) - (m) 記錄室, 中環海事分處 (b) - (m) Record Centre, Central Marine Office
(D) & (E) 海事意外調查組 (D) & (E) Marine Accident Investigation Section

表 19
TABLE 19

海員發證、註冊和僱用統計資料
Statistics on Seafarers' Certification, Registration and Employment

A. 遠洋合格證書考試 Foreign-going Examinations - Certificates of Competency	1999		2000	
	考試人數 Examined	及格人數 Passed	考試人數 Examined	及格人數 Passed
一級甲板高級船員 (商船船長) Deck Officer Class 1 (Master Mariner)				
筆試 Written	2	2	-	-
口試 Oral	4	3	6	5
二級甲板高級船員 Deck Officer Class 2				
筆試 Written	-	-	-	-
口試 Oral	-	-	-	-
訊號 Signal	-	-	-	-
三級甲板高級船員 Deck Officer Class 3				
筆試 Written	2	0	15	9
口試 Oral	2	0	4	3
訊號 Signal	2	0	9	6
小計 Sub-total	12	5	34	23
一級輪機師 Marine Engineer Officer - Class 1				
甲部 Part A	1	0	-	-
乙部 Part B	1	0	1	1
二級輪機師 Marine Engineer Officer - Class 2				
甲部 Part A	1	0	1	-
乙部 Part B	2	0	1	-
三級輪機師 Marine Engineer Officer - Class 3	90	37	117	45
小計 Sub-total	95	37	120	46
總計 Total	107	42	154	69

B. 內河航行考試 River Trade Examinations	1999		2000	
	考試人數 Examined	及格人數 Passed	考試人數 Examined	及格人數 Passed
一級甲板高級船員 Deck Officer Class 1				
筆試 Written	-	-	-	-
口試 Oral	2	1	1	1
二級甲板高級船員 Deck Officer Class 2				
筆試 Written	-	-	-	-
口試 Oral	-	-	-	-
訊號 Signal	-	-	-	-
三級甲板高級船員 Deck Officer Class 3				
筆試 Written	4	2	2	-
口試 Oral	9	7	2	2
小計 Sub-total	15	10	5	3
一級輪機師 Marine Engineer Officer - Class 1	-	-	2	0
二級輪機師 Marine Engineer Officer - Class 2	-	-	-	-
三級輪機師 Marine Engineer Officer - Class 3	2	0	3	2
小計 Sub-total	2	0	5	2
總計 Total	17	10	10	5

表 19 - 續
TABLE 19 - Cont'd

C. 本地合格證書 Local Certificates of Competency	1999		2000	
	考試人數 Examined	及格人數 Passed	考試人數 Examined	及格人數 Passed
船長 - 300 噸或以下船隻 Master - Vessels up to 300 tons	61	12	141	59
船長 - 60 噸或以下船隻 Master - Vessels up to 60 tons	251	64	482	144
船長 - 漁船 Master - Fishing Vessels	137	21	136	23
船長 - 限制 Master - Restricted	183	50	11	11
小計 Sub-total	632	147	770	237
輪機員 - 渡輪船隻 Engineer - Ferry Vessels	1	0	7	1
輪機員 - 150 匹馬力以上船隻 Engineer - Vessels over 150 BHP	193	67	470	81
輪機員 - 150 匹馬力或以下船隻 Engineer - Vessels up to 150 BHP	28	9	19	6
輪機員 - 漁船 Engineer - Fishing Vessels	242	85	123	57
小計 Sub-total	464	161	619	145
總計 Total	1 096	308	1 389	382

D. 遊樂船隻證書考試 Pleasure Vessel Certificates Examinations	1999		2000	
	考試人數 Examined	及格人數 Passed	考試人數 Examined	及格人數 Passed
船長 - 遊樂船隻 (考試) Master - Pleasure Vessel (Examination)	1 877	827	2 415	989
船長 - 遊樂船隻 (豁免) Master - Pleasure Vessel (Exemption)	439	434	203	199
輪機員 - 遊樂船隻 (考試) Engineer - Pleasure Vessel (Examination)	*5 049 **(2 264)	*2 255 **(997)	2 871	1 420
輪機員 - 遊樂船隻 (豁免) Engineer - Pleasure Vessel (Exemption)	237	192	157	153
總計 Total	4 817	2 450	5 646	2 761

註釋： * 每項科目作個別計算。

** 根據考生人數的修正數據。

Notes: * Each subject attempted by candidates are counted as an individual examination.

** Revised figures based on number of candidates.

表 19 - 續
TABLE 19 - Cont'd

E. 部門考試 Departmental Examinations		1999		2000	
		考試人數 Examined	及格人數 Passed	考試人數 Examined	及格人數 Passed
一級航行證書	1st Class Certificate of Navigation	2	2	4	4
二級航行證書	2nd Class Certificate of Navigation	-	-	-	-
三級航行證書	3rd Class Certificate of Navigation	12	2	3	1
一級本地船長	Coxswain Grade 1	17	17	2	2
二級本地船長	Coxswain Grade 2	29	10	20	10
三級本地船長	Coxswain Grade 3	25	22	48	39
一級小輪大偈	Launch Mechanic Class 1	2	2	7	7
二級小輪大偈	Launch Mechanic Class 2	-	-	-	-
三級小輪大偈	Launch Mechanic Class 3	-	-	-	-
一級輪機操作員	Engine Operator Grade 1	6	6	28	28
二級輪機操作員	Engine Operator Grade 2	19	19	22	22
三級輪機操作員	Engine Operator Grade 3	37	37	55	38
遊樂船隻船長	Pleasure Vessel Master	131	26	92	20
遊樂船隻輪機員	Pleasure Vessel Engineer	173	35	97	12
總計	Total	453	178	378	183

F. 其他考試 / 評定 Other Examinations/Assessments		1999		2000	
		考試人數 Examined	及格人數 Passed	考試人數 Examined	及格人數 Passed
救生艇筏熟練操作證書	Proficiency in Survival Craft Certificate	3	3	3	3
高級水手 / 水手證書	AB/EDH Certificate	-	-	-	-
視力測驗	Eye Sight Test	7	6	-	-
類型級別證書 (考試、重新生效及夜航批准)	Type Rating Certificate (Examination, Revalidation and Night Service Approval)	433	433	310	310
香港執照	Hong Kong Licence	1 645	1 645	2 073	2 073
暫時執照	Temporary Licence	369	369	672	672
本地豁免	Local Exemption	263	263	302	302
總計	Total	2 720	2 719	3 360	3 360

表 19 - 續
TABLE 19 - Cont'd

G. 截至 2000 年 12 月 31 日為止的海員註冊人數

Seafarer's Registration as at 31.12.2000

根據第 478 章註冊的海員 Seafarers Registered Under Cap.478	第一部 Part I	第二部 Part II	合計 Total
	2 996	615	3 611

H. 2000 年 所發僱用登記簿數目

Employment Registration Books Issued, 2000

續發簿 Subsequent Books	5
補發簿 Replacement Books	10
新海員簿 New Entrants Books	106
總計 Total	121

I. 2000 年 僱用統計數字

Employment Statistics, 2000

期間 Period	僱用海員方式 Seafarers Employed Through			
	核准公司名冊 Permitted C.R.	總名冊 G.R.	緊急僱用 / 重新僱用等 Emergency / Re-employment, etc.	總計 Total
2000 年第一季 1st Quarter 2000	102	2	-	104
2000 年第二季 2nd Quarter 2000	81	-	-	81
2000 年第三季 3rd Quarter 2000	96	-	480	576
2000 年第四季 4th Quarter 2000	50	1	1	52
總計 Total	329	3	481	813

J. 船公司及職位統計數字

Companies and Posts Statistics

截至 2000 年 12 月 31 日為止在商船海員管理處登記僱用本港註冊海員的船公司數目 Shipping companies listed with M. M. Office to employ Hong Kong registered seafarers as at 31.12.2000	29
2000 年 按船公司所交周年報表而編製的本港海員就業職位 Posts filled by Hong Kong seafarers as compiled from annual returns submitted by shipping companies, 2000	1 227

表 19 - 續
TABLE 19 - Cont'd

K. 2000 年 訂立和終結的香港註冊船舶船員協議條款

Crew Agreement of Hong Kong Registered Ships Opened and Closed, 2000

項目 Item	所訂立的協議 Agreements Opened		終結的協議 Agreements Closed	
	在海管處監督下 With MMO Superintendency	不在海管處監督下 Without MMO Superintendency	在海管處監督下 With MMO Superintendency	不在海管處監督下 Without MMO Superintendency
船員協議條款數目 No. of agreements	38	316	55	230
總計 Total	354		285	

L. 香港註冊船舶僱用和解職的海員人數**

Number of Seafarers** Employed and Discharged by Hong Kong Registered Ships

年份 Year	1998	1999	2000
所僱用的海員人數 No. of seafarers employed	12 900	14 783	15 958
解職的海員人數 No. of seafarers discharged	13 445	13 322	13 992

註釋： ** 數字包括在香港以外地方註冊的海員。

Note: ** The figures include seafarers registered outside Hong Kong.

資料來源: (A) - (F) 海員發證組 (A) - (F) Seafarers' Certification Section
Data Sources: (G) - (L) 商船海員管理處 (G) - (L) Mercantile Marine Office

表 20
TABLE 20

香港註冊船舶統計資料
Statistics on Ships Registered in Hong Kong

A. 1999 和 2000 年底的船舶數目和噸位

Number of Ships and Tonnage as at end of 1999 and 2000

	船舶數目 No. of ships	淨噸位 Net tonnage	總噸位 Gross tonnage
(i) 1999 年 12 月 31 日船舶註冊概況 On register as at 31.12.1999	521	4 703 001	8 337 884
(ii) 2000 年註冊的船舶 ** Ships Registered in the year of 2000 **	139	2 141 771	3 636 086
(iii) 2000 年取消註冊的船舶 ** Ships De-registered in the year of 2000 **	83	865 979	1 576 889
(iv) 2000 年 12 月 31 日船舶註冊概況 On register as at 31.12.2000	577	## 5 978 729	## 10 397 081

註釋 : 淨噸位及總噸位以每單位 100 立方呎計算。 Net and gross tonnages are in units of 100 cubic feet.
Notes : ## (i) + (ii) - (iii) ≠ (iv) 因部分註冊船舶於 2000 年更改噸位所致。 ## (i) + (ii) - (iii) ≠ (iv) due to alteration of tonnages of some ships already on register in 2000.
** 詳情請參閱第四部附錄 E 及 F. ** For details, please see Appendices E & F in Part IV.

B. 2000 年 按總噸位分配分析香港註冊船舶數目

Ships Registered at Hong Kong by Gross Tonnage Distribution, 2000

總噸位分配 (噸) Gross Tonnage Distribution (tons)	船舶數目 No. of Ships
500 以下 Under 500	173
500 - 999	46
1 000 - 1 999	18
2 000 - 2 999	6
3 000 - 3 999	10
4 000 - 4 999	5
5 000 - 9 999	27
10 000 - 14 999	36
15 000 - 19 999	63
20 000 - 24 999	34
25 000 - 29 999	46
30 000 - 34 999	5
35 000 - 39 999	49
40 000 - 44 999	10
45 000 - 49 999	1
50 000 - 54 999	0
55 000 - 59 999	0
60 000 - 64 999	0
65 000 - 69 999	11
70 000 - 84 999	17
85 000 - 114 999	18
115 000 - 144 999	0
145 000 - 174 999	2
總計 Total	577

資料來源: 船舶註冊處
Data Source: Shipping Registry

表 21
TABLE 21

政府船隊統計資料
Statistics on Government Fleet

開支預算總額 (百萬元)	Total expenditure estimate (\$M)	99/00	00/01
		439 (實際 Actual)	453 (實際 Actual)
以 1 月 1 日計算的員工總數 (包括船員)	Total no. of staff (including crew) as at 1 st January	760	778
付運的政府船舶	Government Vessels delivered	14	16
新船招標 / 報價	Tenders/Quotations called for new vessels	14	14
新船合約	Contracts awarded for new vessels	13	15
已完成的合約及購買規格書	Contracts and procurements specifications completed	27	30
船舶總數	Total number of vessels	595	659
主要機動船舶	Major mechanized vessels	149	152
i. 水警	i. Marine Police	57	59
ii. 其他	ii. Others	92	93
充氣式橡皮艇和快艇	Inflatable boats and speed boats	237	235
其他非機動船舶	Other non-mechanized vessels	209	272
主要機動船舶的可用率	Availability of major mechanized vessels	88%	86%
i. 水警	i. Marine Police	85%	85%
ii. 其他	ii. Others	89%	87%
主要機動船舶保養費總額 (百萬元)	Total maintenance cost of major mechanized vessels (\$M)	142.8	154.1
i. 水警	i. Marine Police	99.3	108.2
ii. 其他	ii. Others	43.5	45.9
主要機動船舶平均保養費 (百萬元)	Average maintenance cost of major mechanized vessels (\$M)	0.89	0.96
i. 水警	i. Marine Police	1.68	1.80
ii. 其他	ii. Others	0.43	0.46
定期合約安排	Term contract arrangements	1999	2000
i. 船舶總數	i. Total number of vessels	62	62
ii. 水警巡邏船主機總數	ii. Total number of main engines for Police Patrol Launches	69	114
政府船艇肇事個案	Accidents involving Government Craft	1999	2000
i. 肇事個案數目	i. Number of Cases of Accidents		
a. 船塢員工	a. Dockyard staff	N.A.	7
b. 船員	b. Crew	N.A.	10
ii. 因工傷損失人-日總數	ii. Number of man-days lost		
a. 船塢員工	a. Dockyard staff	N.A.	126
b. 船員	b. Crew	N.A.	640

註釋： N.A. 不適用
Note: N.A. Not Applicable

表 21 – 續
TABLE 21 – Cont'd

按課程類別分析修習人數

Number of Attendees by Type of Training Courses

課程類別	Type of Training Course	1999	2000
1. 海事督察課程	Marine Inspector Course	5	5
2. 晉升高級助理船務主任專修課程	Promotion Course for SASM	5	4
3. 小艇操作員課程	Small Boat Operator Course	-	-
4. 三級本地船長	Grade 3 - Coxswain	20	24
5. 二級本地船長	Grade 2 - Coxswain	16	12
6. 三級輪機操作員	Grade 3 - Engine Operator	24	36
7. 二級輪機操作員	Grade 2 - Engine Operator	24	22
8. 小輪助理員入職課程	Induction Course for Launch Assistant	32	47
9. 三等駕駛員補習班	Departmental Class III Revision Course	-	-
10. 海上安全講座	Marine Safety Seminar	100	83

修習由職業安全健康局提供的職業安全及健康課程人數

Number of Attendees to Safety and Health Training Courses provided by OSHC

職系	Grade	1999	2000
1. 督察級	Inspector Grade	N.A.	6
2. 監工級	Works Supervisor	N.A.	18
3. 技工級	Artisan	N.A.	98

以 2000 年 12 月 31 日計算政府船艇調配情況

Deployment of Manned Government Craft as at 31 December 2000

調配 Deployment	機動船舶 Mechanized Vessels	充氣式 橡皮艇 Inflatables	快艇 Speed Boats	駁船 Lighters	小艇 Dinghies	所有種類 All Types
政府船塢集調船隊 Government Dockyard Pool	7	-	-	7	6	20
海事處處長 Director of Marine	1	-	-	-	1	2
海港巡邏組 Harbour Patrol Section	17	-	5	2	6	30
繫泡小組 Mooring Unit	1	-	-	-	1	2
輔航設備小組 Aids to Navigation Unit	1	-	-	-	2	3
中國客運碼頭 China Ferry Terminal	-	-	-	2	-	2
船舶事務科 Shipping Division	2	-	-	-	1	3
污染控制小組 Pollution Control Unit	17	2	1	-	2	22
牌照及關務組 Licensing & Port Formalities Section	2	-	-	-	-	2
西貢海事分處 Sai Kung Marine Office	1	-	2	-	1	4
大埔海事分處 Tai Po Marine Office	1	-	-	-	1	2
海道測量部 Hydrographic Office	2	-	1	-	-	3
入境事務處 Immigration Department	7	-	-	-	-	7
懲教署 Correctional Services Department	2	-	-	-	-	2
環境保護署 Environmental Protection Department	1	1	-	-	1	3
漁農自然護理處 Agriculture, Fisheries & Conservation Department	2	2	-	2	-	6
衛生署 Department of Health	3	-	-	-	2	5
土木工程署 Civil Engineering Department	5	-	-	-	4	9
香港海關 Customs & Excise Department	2	-	-	-	-	2
總計 Total	74	5	9	13	28	129

註釋： N.A. 不適用

Note: N.A. Not Applicable

資料來源： 政府船隊科

Data Source: Government Fleet Division

表 22
TABLE 22

海港繫泊浮泡統計資料
Statistics on Harbour Mooring Buoys

A. 浮泡統計資料

Buoys Statistics

	<u>1999</u>	<u>2000</u>
“A 級”繫泊浮泡數目 No. of "A class" mooring buoys	32	31
“B 級”繫泊浮泡數目 No. of "B class" mooring buoys	27	27
“A 級”浮泡訂用日數 Days booked/occupied of "A class" buoys	6 521	5 449
“B 級”浮泡訂用日數 Days booked/occupied of "B class" buoys	5 084	4 915
“A 級”浮泡訂用百分率 Percentage of "A class" buoys used based on booking	47.3%	46.0%
“B 級”浮泡訂用百分率 Percentage of "B class " buoys used based on booking	41.7%	40.3%

上述數字只顯示訂用情況，實際使用率則如下：

Whilst the above figures are indicative of booking usage, the actual physical occupancy rates are as follows:

		<u>1999</u>	<u>2000</u>
“A 級”浮泡	"A class " Buoys	33.8%	29.2%
“B 級”浮泡	"B class " Buoys	30.4%	27.3%

B. 浮泡保養

Buoys Maintenance

		<u>1998</u>	<u>1999</u>	<u>2000</u>
按期保養的燈浮標	Light Buoys maintained	100	112	102
按期保養的養魚區浮泡	Mariculture Buoys maintained	168	172	182
按期保養的小型繫泊浮泡	Minor Mooring maintained	189	182	181
按期保養的大型繫泊浮泡	Major Mooring maintained	N.A.	N.A.	15
按期保養的“A 級”海港繫泊浮泡	Harbour mooring maintained "A class"	34	32	31
按期保養的“B 級”海港繫泊浮泡	Harbour mooring maintained "B class"	25	27	27

註釋： N.A. 不適用

Note: N.A. Not Applicable

資料來源： (A) 船隻航行監察中心
Data Sources: (B) 港口後勤組

(A) Vessel Traffic Centre
(B) Port Logistics Section

表 23
TABLE 23

2000 年 按分布地點分析香港私用繫泡數目
Number of Private Moorings Laid in Hong Kong by Location, 2000

	分布地點 <u>Location</u>	私用繫泡數目 <u>Number of Private Mooring</u>	
中部 Central	香港仔南避風塘 (白沙灣)	Aberdeen South Typhoon Shelter (Pak Sha Wan)	1
	香港仔南避風塘 (布廠灣)	Aberdeen South Typhoon Shelter (Po Chong Wan)	463
	香港仔西避風塘	Aberdeen West Typhoon Shelter	6
	香港仔西避風塘 (防波堤外)	Aberdeen West Typhoon Shelter (Outside Breakwater)	19
	長洲避風塘	Cheung Chau Typhoon Shelter	16
	大嶼山愉景灣	Discovery Bay, Lantau Island	6
	熨波洲	Middle Island	108
	南丫島模達灣	Mo Tat Wan, Lamma Island	2
	大嶼山稔樹灣	Nim Shue Wan, Lantau Island	9
	南丫島波羅嘴	Po Lo Tsui, Lamma Island	10
	皇后碼頭西	Queen's Pier West	1
	赤柱正灣	Stanley Main Beach	4
	大潭	Tai Tam	44
	南丫島榕樹灣	Yung Shue Wan, Lamma Island	1
	堅尼地城新海旁	Kennedy Town New Praya	13
	灣仔龍景街對出海旁	Off Lung King Street (Wan Chai)	5
	坪洲西	Peng Chau West	1
	南丫島鹿洲灣	Luk Chau Wan, Lamma Island	1
	南丫島蘆荻灣	Lo Tik Wan, Lamma Island	1
	小計	Sub-total	711
東部 East	銅鑼灣避風塘	Causeway Bay Typhoon Shelter	418
	銅鑼灣避風塘 (防波堤外)	Causeway Bay Typhoon Shelter (Outside Breakwater)	4
	西貢白沙灣	Hebe Haven	777
	大埔船灣海	Shuen Wan Hoi, Tai Po	3
	大埔大尾篤	Tai Mei Tuk, Tai Po	40
	西貢大網仔	Tai Mong Tsai, Sai Kung	7
	西貢大網仔(阿公灣)	Tai Mong Tsai, Sai Kung (A Kung Wan)	1
	西貢斬竹灣	Tsam Chuk Wan, Sai Kung	8
	西貢早禾坑	Tso Wo Hang, Sai Kung	14
	往灣	Wong Wan (Double Haven)	3
	油塘灣	Yau Tong Wan	2
	三家村避風塘	Sam Ka Tsuen Typhoon Shelter	2
	高塘口灣	Ko Tong Hau Wan	1
	濠西洲	Kau Sai Chau	2
	赤徑口	Chek Keng Hau	2
	小計	Sub-total	1 284

表 23 - 續
TABLE 23 – Cont' d

		分布地點 <u>Location</u>	私用繫泡數目 <u>Number of Private Mooring</u>
西部	荔枝角	Lai Chi Kok	5
West	北大嶼山	North Lantau	3
	大嶼山竹篙灣	Penny's Bay, Lantau Island	1
	藍巴勒海峽 (避風塘外)	Rambler Channel (Outside Typhoon Shelter)	6
	昂船洲東南	Stonecutters Island South East	1
	大欖	Tai Lam	3
	汀九	Ting Kau	75
	土瓜灣	To Kwa Wan	4
	青衣北	Tsing Yi North	4
	青衣西	Tsing Yi West	4
	荃灣	Tsuen Wan	91
	屯門 (渡輪碼頭以西)	Tuen Mun (West of Ferry Pier)	1
	屯門避風塘	Tuen Mun Typhoon Shelter	13
	屯門 (避風塘外)	Tuen Mun (Outside Typhoon Shelter)	8
	油蔴地 (新避風塘防波堤外)	Yaumatei (Outside New T.S. Breakwater)	33
	油蔴地避風塘	Yaumatei Typhoon Shelter	19
	小計	Sub-total	271
總計			2 266
Total			

資料來源: 私用繫泡分組
Data Source: Private Mooring Sub-unit

表 24
TABLE 24

垃圾收集、油污和檢控個案
Refuse Collection, Oil Pollution and Prosecutions

A. 垃圾收集和油污事故

Refuse Collection and Oil Pollution Incident

項目	Item	1998	1999	2000
從海港收集的垃圾(公噸)	Refuse collected from harbour (tonnes)	6 749	8 050	8 713
從船舶收集的垃圾(公噸)	Refuse collected from vessel (tonnes)	2 126	2 440	2 590
處理的油污事故(宗)	Oil Pollution incidents tackled (cases)	94	85	52

B. 檢控統計數字

Prosecution Statistics

罪行 Offence	陳詞/聆訊個案 No. of cases heard		定罪個案 No. of cases convicted		罰款 Fined (HK\$)	
	1999	2000	1999	2000	1999	2000
違反碰撞規例 Breach of Collision Regulations	68	219	68	215	132,900	251,650
船上沒有合格船長/輪機員 No qualified master/engineer on board	1 655	1 660	1 631	1 645	2,601,900	1,964,110
違反牌照條件 Breach of licence condition	166	249	163	248	243,000	263,950
未經允許進入機場入口區域 Entered into airport approach area without permission	40	22	40	21	45,250	25,900
靠泊於已展示禁止船隻靠泊告示的岸壁/ 登岸梯級 Lying alongside seawall/landing steps prohibited by Notice	233	168	232	168	184,050	207,900

表 24 - 續
TABLE 24 – Cont' d

B. 檢控統計數字
Prosecution Statistics

罪行 Offence	陳詞/聆訊個案 No. of cases heard		定罪個案 No. of cases convicted		罰款 Fined (HK\$)	
	1999	2000	1999	2000	1999	2000
船隻未有領牌/並無有效牌照 Vessel was not licensed/did not have a valid licence	320	220	320	217	662,000	303,260
未獲允許運載乘客/超額運載乘客 Carrying passenger without permission/excessive passengers	30	12	29	12	27,650	4,450
沒有陳示有效的驗船/保險證明書 Failing to display valid certificate of survey/insurance	51	62	51	60	33,850	32,700
超速行駛 Steaming in excessive speed	44	66	44	66	48,500	60,500
海上拋置廢物 Marine littering	132	113	131	113	36,770	29,050
在公共渡輪上吸煙 * Smoking on board public ferry *	706	8	570	5	148,490	1,500
其他海事罪行 Other marine offences	331	442	324	429	453,270	684,200
總計 Total	3 776	3 241	3 603	3 199	4,617,630	3,829,170

註釋： * 個案由各公共渡輪公司提出再轉交海事處跟進檢控工作
Note: * Cases initiated by public ferry companies and referred to Marine Department for follow up prosecution actions.

資料來源： (A) 港口後勤組 (A) Port Logistics Section
Data Sources: (B) 檢控小組 (B) Prosecution Unit

表 25
TABLE 25

香港持牌船隻統計資料
Statistics on Hong Kong Licensed Vessels
(領有有效牌照)
(with Valid Licence)

	<u>1999</u>	<u>2000</u>
小輪和渡輪		
Launches and Ferries		
只限往來指明遮蔽水域	21	22
Plying within Specified Shelter Waters		
只限往來內河航限/香港水域	661	685
Plying within River Trade Limits/Waters of Hong Kong		
小計	682	707
Sub-total		
雜類航行器		
Miscellaneous Craft		
機動	6 116	6 174
Mechanised		
非機動	1 987	2 041
Non-mechanised		
小計	8 103	8 215
Sub-total		
遊樂船隻	4 200	4 416
Pleasure Vessels		
小計 - 香港持牌船隻 (不包括住家船隻)	12 985	13 338
Sub-total - Hong Kong Licensed Vessels (excluding Dwelling Vessels)		
住家船隻		
Dwelling Vessels		
長洲避風塘	5	3
Cheung Chau Typhoon Shelter		
船灣避風塘	1	1
Shuen Wan Typhoon Shelter		
銅鑼灣避風塘	10	10
Causeway Bay Typhoon Shelter		
小計	16	14
Sub-total		
總計		
Total	13 001	13 352

2000年12月31日止的閒置船隻

Vessels laid-up during the year ending 31 December 2000

1

資料來源: 牌照及關務組

Data Source: Licensing and Port Formalities Section

表 26
TABLE 26

2000 年 按噸位等級分析香港持牌船隻
Hong Kong Licensed Vessels by Tonnage Classification, 2000
(不包括遊樂船隻和住家船隻)
(Excluding Pleasure Vessels and Dwelling Vessels)

雜類航行器 Miscellaneous Crafts		60 淨噸及以下 60 net tons and below		61 至 300 淨噸 61 - 300 net tons		300 淨噸以上 Over 300 net tons		總計 Total
		機動 Mechanised	非機動 Non-Mechanised	機動 Mechanised	非機動 Non-Mechanised	機動 Mechanised	非機動 Non-Mechanised	
第 I 類 Class I	載客舢舨 Passenger Sampans	109	38	-	-	-	-	147
第 II 類 Class II	駁船和躉船 Lighters and Barges	132	11	178	68	61	830	1 280
第 III 類 Class III	固定船隻 Stationary Vessels	-	176	-	30	-	9	215
第 IV 類 Class IV	漁船 Fishing	395	682	-	-	-	-	1 077
	鋼殼漁船 Steel Fishing Spacing	-	-	14	-	-	-	14
	雜類船隻 Miscellaneous	334	94	2	34	2	60	526
	裝有舷外機的開敞式舢舨 Outboard Open Sampans	2 595	-	-	-	-	-	2 595
第 V 類 Class V	營業船隻 Trading Vessels	35	-	7	-	-	-	42
第 VI 類 Class VI	漁船 Fishing	775	1	1 535	-	-	-	2 311
第 VII 類 Class VII	浮塢/浮置工場 Floating Dock/Workshop	-	-	-	1	-	5	6
第 VIII 類 Class VIII	水上食肆 Floating Restaurant	-	-	-	-	-	2	2
	小輪和渡輪 Launches and Ferries	473	-	224	-	10	-	707
總計 Total		4 848	1 002	1 960	133	73	906	8 922

表 27
TABLE 27

用作裝卸貨物和海港工程的持牌船隻 (屬第 II 類持牌船隻)
Licences on Cargo Working and Harbour Engineering Crafts (i.e. Class II Vessel Licences)

A. 有效牌照和待續牌照

Valid Licences and Pending Renewal Licences

年份 Year	非自航鋼躉 Dumb Steel Lighter		非自航木躉 Dumb Wooden Lighter		機動貨艇 Motor Cargo Boats		總計 Total	
		(%)		(%)		(%)		(%)
1990	1 617	(-3.2)	1	(0.0)	408	(-4.4)	2 026	(-3.4)
1991	1 617	(0.0)	1	(0.0)	398	(-2.5)	2 016	(-0.5)
1992	1 639	(+1.4)	1	(0.0)	414	(+4.0)	2 054	(+1.9)
1993	1 658	(+1.2)	1	(0.0)	424	(+2.4)	2 083	(+1.4)
1994	1 605	(-3.2)	1	(0.0)	405	(-4.5)	2 011	(-3.5)
1995	1 475	(-8.1)	0	(N.A.)	390	(-3.7)	1 865	(-7.3)
1996	1 380	(-6.4)	0	(N.A.)	368	(-5.6)	1 748	(-6.3)
1997	1 276	(-7.5)	0	(N.A.)	363	(-1.4)	1 639	(-6.2)
1998	1 148	(-10.0)	0	(N.A.)	378	(+4.1)	1 526	(-6.9)
1999	1 040	(-9.4)	0	(N.A.)	396	(+4.8)	1 436	(-5.9)
2000	1 020	(-1.9)	0	(N.A.)	404	(+2.0)	1 424	(-0.8)

B. 有效牌照

Valid Licences

年份 Year	非自航鋼躉 Dumb Steel Lighter		非自航木躉 Dumb Wooden Lighter		機動貨艇 Motor Cargo Boats		總計 Total	
		(%)		(%)		(%)		(%)
2000	909	(-0.5)	0	(N.A.)	371	(+3.9)	1 280	(+0.7)

註釋： N.A. 不適用
Note: N.A. Not Applicable

資料來源： 牌照及關務組
Data Source: Licensing and Port Formalities Section

表 28

TABLE 28

2000 年 對住家船隻的清除和管制
Clearance and Control of Dwelling Vessels, 2000

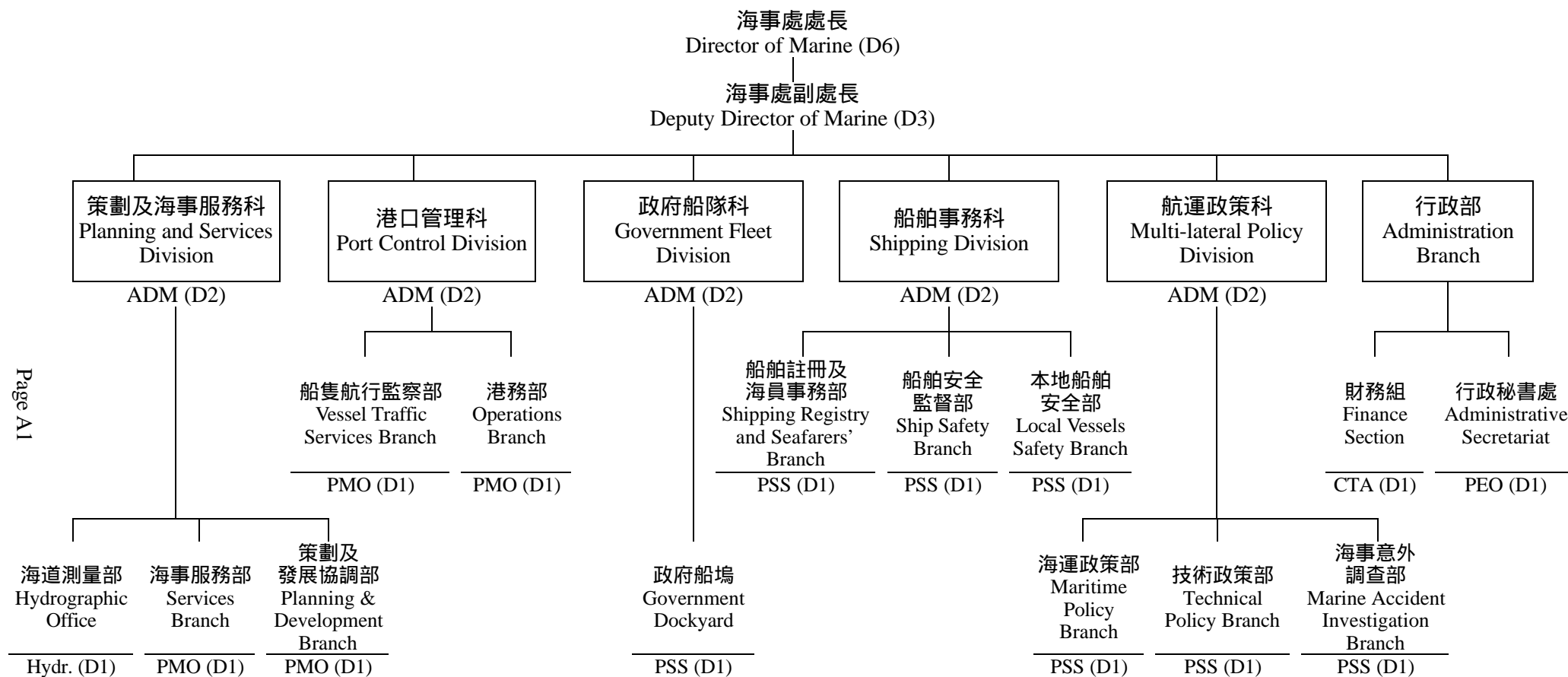
地點 Place	沉沒船隻數目 No. of Craft Sunk	清除船隻數目 No. of Craft Cleared	遷徙人數 No. of Persons Resited
船灣避風塘 Shuen Wan Typhoon Shelter	-	-	-
長洲避風塘 Cheung Chau Typhoon Shelter	-	2	7
銅鑼灣避風塘 Causeway Bay Typhoon Shelter	-	-	-
總計 Total	-	2	7

資料來源: 牌照及關務組

Data Source: Licensing and Port Formalities Section

附錄 A
APPENDIX A

海事處組織架構圖
Marine Department Organization Chart



Page A1

圖列 Legend:

ADM	= 海事處助理處長	Assistant Director of Marine
PMO	= 首席海事主任	Principal Marine Officer
PSS	= 首席驗船主任	Principal Surveyor of Ships
PEO	= 首席行政主任	Principal Executive Officer

Hydr.	= 海道測量師
CTA	= 總庫務會計師
CEO	= 總行政主任
D6	= 首長薪級第6點
D3	= 首長薪級第3點
D2	= 首長薪級第2點
D1	= 首長薪級第1點

Hydrographer
Chief Treasury Accountant
Chief Executive Officer
Directorate Level 6
Directorate Level 3
Directorate Level 2
Directorate Level 1

附錄 B
APPENDIX B

2000年12月31日海事處編制和實際員額
Marine Department Establishment and Strength as at 31.12.2000

		編制 Establishment	實際員額 Strength
<u>首長級人員</u> <u>Directorate Officers</u>			
海事處處長	Director of Marine (D6)	1	1
海事處副處長	Deputy Director of Marine (D3)	1	1
海事處助理處長	Assistant Director of Marine (D2)	5	5
首席海事主任	Principal Marine Officer (D1)	4	3
首席驗船主任	Principal Surveyor of Ships (D1)	7	7
首席行政主任	Principal Executive Officer (D1)	1	1
總庫務會計師	Chief Treasury Accountant (D1)	1	1
海道測量師	Hydrographer (D1)	1	1
<u>部門職系</u> <u>Departmental Grade</u>			
高級海事主任	Senior Marine Officer	18	19
海事主任	Marine Officer	43	42
海事監督	Marine Controller	12	12
助理海事監督	Assistant Marine Controller	57	55
高級船舶安全主任	Senior Shipping Safety Officer	1	1
船舶安全主任	Shipping Safety Officer	9	9
高級驗船主任	Senior Surveyor of Ships	17	17
驗船主任(輪機)	Surveyor of Ships (Engineer & Ship)	10	10
驗船主任(航海)	Surveyor of Ships (Nautical)	7	7
驗船主任(船舶)	Surveyor of Ships (Ship)	6	5
高級助理船務主任	Senior Assistant Shipping Master	18	18
助理船務主任	Assistant Shipping Master	3	3
一級海事督察	Marine Inspector I	78	73
二級海事督察	Marine Inspector II	75	74
輔航設備監督	Superintendent of Aids to Navigation	1	1
助理輔航設備監督	Assistant Superintendent of Aids to Navigation	2	1
總驗船督察	Chief Ship Inspector	2	2
高級驗船督察	Senior Ship Inspector	13	13

附錄 B - 續
APPENDIX B – Cont'd

		編制 Establishment	實際員額 Strength
驗船督察	Ship Inspector	24	24
助理驗船督察	Assistant Ship Inspector	4	3
小輪船員督導員	Launch Crew Supervisor	4	4
高級小輪船長	Senior Launch Master	73	71
小輪船長	Launch Master	92	92
小輪助理員	Launch Assistant	288	286
** 水手	Sailor	0	1
高級小輪大偈	Senior Launch Mechanic	6	6
小輪大偈	Launch Mechanic	4	4
高級本地船長	Senior Coxswain	2	2
本地船長	Coxswain	3	3
海事工業安全督察	Marine Industrial Safety Inspector	8	8
測量服務員	Surveyor Attendant	1	1
<u>一般職系</u>			
<u>General Grade</u>			
高級統計師	Senior Statistician	1	1
一級統計主任	Statistical Officer I	1	1
二級統計主任	Statistical Officer II /	1	1
見習統計主任	Student Statistical Officer		
高級庫務會計師	Senior Treasury Accountant	1	1
庫務會計師	Treasury Accountant	3	3
高級會計主任	Senior Accounting Officer	1	1
一級會計主任	Accounting Officer I	1	1
二級會計主任	Accounting Officer II	3	3
總行政主任	Chief Executive Officer	1	1
高級行政主任	Senior Executive Officer	2	2
一級行政主任	Executive Officer I	7	6
二級行政主任	Executive Officer II	2	2
高級中文主任	Senior Chinese Language Officer	1	1
一級中文主任	Chinese Language Officer I	2	2
二級中文主任	Chinese Language Officer II	2	2

註釋: ** 屬已取消職位，暫時填補其他常額職位。

Note: ** Obsolete post held against other permanent post.

附錄 B - 續
APPENDIX B – Cont'd

		編制 Establishment	實際員額 Strength
製圖師	Cartographer /	1	1
助理製圖師	Assistant Cartographer		
高級電子工程師	Senior Electronics Engineer	1	1
電子工程師	Electronics Engineer /	1	1
助理電子工程師	Assistant Electronics Engineer		
高級土地測量師	Senior Land Surveyor	1	1
土地測量師	Land Surveyor /	2	2
助理土地測量師	Assistant Land Surveyor		
電子督察	Electronics Inspector	1	1
助理空氣調節督察	Assistant Air-Conditioning Inspector	1	1
首席技術主任(製圖)	Principal Technical Officer (Cartographic)	1	1
高級技術主任(製圖)	Senior Technical Officer (Cartographic)	3	3
技術主任(製圖)	Technical Officer (Cartographic) /	6	6
見習技術主任(製圖)	Technical Officer Trainee (Cartographer)		
高級文書主任	Senior Clerical Officer	9	9
文書主任	Clerical Officer	30	31
助理文書主任	Assistant Clerical Officer	75	74
文書助理	Clerical Assistant	127	125
辦公室助理員	Office Assistant	17	17
資料處理員	Data Processor	1	1
高級物料供應主任	Senior Supplies Officer	1	1
物料供應主任	Supplies Officer	1	1
助理物料供應主任	Assistant Supplies Officer	1	1
高級物料供應員	Senior Supplies Supervisor	1	1
一級物料供應員	Supplies Supervisor I	3	3
二級物料供應員	Supplies Supervisor II	11	11
助理物料供應員	Supplies Assistant	3	3
物料供應服務員	Supplies Attendant	4	4
高級私人秘書	Senior Personal Secretary	1	1
一級私人秘書	Personal Secretary I	6	4
二級私人秘書	Personal Secretary II	23	23

附錄 B - 續
APPENDIX B – Cont'd

		編制 Establishment	實際員額 Strength
打字督導	Supervisor of Typing Services	1	1
機密檔案室助理	Confidential Assistant	1	1
繕校員	Calligraphist	2	2
高級打字員	Senior Typist	1	1
打字員	Typist	8	8
汽車司機	Motor Driver	4	4
<u>共通職系</u> <u>Common Grade</u>			
總技術主任	Chief Technical Officer	3	3
高級電氣督察	Senior Electrical Inspector	3	3
電氣督察	Electrical Inspector	4	4
助理電氣督察	Assistant Electrical Inspector	4	4
高級機械督察	Senior Mechanical Inspector	8	7
機械督察	Mechanical Inspector	12	12
助理機械督察	Assistant Mechanical Inspector	8	8
首席測量主任(輪機)	Principal Survey Officer (Engineering)	1	1
高級測量主任(輪機)	Senior Survey Officer (Engineering)	5	5
測量員(輪機)	Survey Officer (Engineering) /	13	13
見習測量員(輪機)	Survey Officer Trainee (Engineering)		
一級監工	Works Supervisor I	18	15
二級監工	Works Supervisor II	10	9
高級技工	Senior Artisan	49	44
技工	Artisan	183	180
丈量員	Chainman	4	4
產業看管長	Head Property Attendant	1	1
產業看管員	Property Attendant	15	15
一級工人	Workman I	1	1
二級工人	Workman II	48	48
<hr/> 總計	<hr/> Total	<hr/> <u>1670</u>	<hr/> <u>1637</u>

附錄 C
APPENDIX C

2000 年海事處訪客
Visitors to the Marine Department, 2000

年內，本處曾經接待以下訪客：—

During the year under review, the Department hosted the following visitors:-

1. 財政司司長曾蔭權先生。
Mr. Donald Tsang, Financial Secretary.
2. A delegation of four members led by Dr. J.F.M. Koppenjan from Delft University of Technology, The Netherlands.
3. Mr. Yoshiaki Hompo, Director of General Affairs Division, Maritime Transport Bureau, Ministry of Transport of Japan and his colleague Mr. Koichiro Kakee.
4. Mr. Christophe Planty, Managing Director of the Port of Nantes St Nazaire, France.
5. 上海市國航辦處長瞿金良先生率領的十人考察團。
6. A delegation of two teachers and 20 students from Erasmus University, Rotterdam.
7. 南京大學代表團，由兩名教授和 13 名學生組成。
A delegation of two professors and 13 students from Nanjing University.
8. Two researchers from the Economic and Social Commission for Asia and the Pacific.
9. 廣州海事法院院長金正佳先生率領的七人代表團。
10. Dr. Georg-Dietrich Jansen, Managing Director of PLANCO Consulting GmbH, Germany.
11. A delegation of eight members led by Mr. Yamaguchi, Chairman of Tomakomai Port Administrative Association.

附錄 C – 續
APPENDIX C – Cont' d

12. A delegation of three members led by Mr. Michael Giari, Executive Director of the Port of Redwood City.
13. A trade development mission of Ishikari Bay New Port Authority, Hokkaido, Japan.
14. 中國港口協會代表團，一行 24 人。
A delegation of 24 members of the China Ports and Harbours Association.
15. A delegation of 10 members of Straightway, a transport business organization in South-Eastern Finland.
16. A delegation of 11 members of the Brisbane Airport Corporation.
17. 西班牙畢爾巴鄂港代表團，一行 17 人。
A delegation of 17 members from the Port of Bilbao, Spain.
18. 廈門市港務管理局代表團，一行五人。
A delegation of five members from Xiamen Harbour Administration.
19. Mr. William Everard and his colleagues of the Shipowners' Protection Limited.

附錄 D
APPENDIX D

2000 年 新訂海事法例
New Maritime Legislation, 2000

列載二零零零年一月一日至二零零零年十二月三十一日通過有關海事處工作及船務的法例：

The following legislation affecting the work of the Department and shipping was enacted during the year under review (1.1.2000 – 31.12.2000):

法例名稱 Title	法例編號 L.N. No.
《 2000 年商船 (安全) (修訂) 條例》 Merchant Shipping (Safety) (Amendment) Ordinance 2000	6/2000
《 2000 年海上傾倒物料 (修訂) 條例》 Dumping at Sea (Amendment) Ordinance 2000	18/2000
《 2000 年商船 (安全) (修訂) 條例 (生效日期) 公告》 Merchant Shipping (Safety) (Amendment) Ordinance (Commencement) Notice 2000	27/2000
《2000 年商船 (安全) (貨船構造及檢驗) (1984 年 9 月 1 日之前建造的船舶) (修訂) 規例》 Merchant Shipping (Safety) (Cargo Ship Construction and Survey) (Ships Built Before 1 September 1984) (Amendment) Regulation 2000	32/2000
Merchant Shipping (Conduct of Inquiries) Rules 1990 (L.N. 449/1990) (Amendment)	32/2000 s.49
Merchant Shipping (Crew Accommodation) Regulations (Exemption) Notice 1990 (L.N. 26/1990) (Amendment)	32/2000 s.49
《2000 年商船 (安全) (貨船構造及檢驗) (1984 年 9 月 1 日或之後建造的船舶) (修訂) 規例》 Merchant Shipping (Safety) (Cargo Ship Construction and Survey) (Ships Built On or After 1 September 1984) (Amendment) Regulation 2000	33/2000
《2000 年商船 (安全) (貨船安全設備檢驗) (修訂) 規例》 Merchant Shipping (Safety) (Cargo Ship Safety Equipment Survey) (Amendment) Regulation 2000	34/2000
《2000 年商船 (安全) (載重線) (修訂) 規例》 Merchant Shipping (Safety) (Load Line) (Amendment) Regulation 2000	35/2000
《2000 年商船 (安全) (載重線) (船舶長度) (修訂) 規例》 Merchant Shipping (Safety) (Load Lines) (Length of Ship) (Amendment) Regulation 2000	36/2000
《2000 年商船 (安全) (客船構造及檢驗) (1984 年 9 月 1 日或之後建造的船舶) (修訂) 規例》 Merchant Shipping (Safety) (Passenger Ship Construction and Survey) (Ships Built On or After 1 September 1984) (Amendment) Regulation 2000	37/2000
《2000 年商船 (安全) (無線電裝設檢驗) (修訂) 規例》 Merchant Shipping (Safety) (Radio Installations Survey) (Amendment) Regulation 2000	38/2000

附錄 D – 續

APPENDIX D – Cont' d

法例名稱 Title	法例編號 L.N. No.
《海上傾倒物料 (豁免) 令》 Dumping at Sea (Exemption) Order	64/2000
《 1999 年港口管制 (貨物裝卸區) (修訂) (第 2 號) 規例 (1999 年第 279 號法律公告) 2000 年 (生效日期) 公告》 Port Control (Cargo Working Areas) (Amendment) (No. 2) Regulation 1999 (L.N. 279 of 1999) (Commencement) Notice 2000	74/2000
《 2000 年海上傾倒物料 (修訂) 條例 (生效日期) 公告》 Dumping at Sea (Amendment) Ordinance (Commencement) Notice 2000	105/2000
《 2000 年海上傾倒物料 (豁免) 令 (生效日期) 公告》 Dumping at Sea (Exemption) Order (Commencement) Notice 2000	106/2000
《2000 年船舶及港口管制 (修訂) 規例》 Shipping and Port Control (Amendment) Regulation 2000	107/2000
《2000 年船舶及港口管制 (避風塘) (修訂) 規例》 Shipping and Port Control (Typhoon Shelters) (Amendment) Regulation 2000	108/2000
《2000 年船舶及港口管制規例 (遊樂船隻航速限制區) (廢除) 公告》 Shipping and Port Control Regulations (Speed Restricted Zones for Pleasure Vessels) (Repeal) Notice 2000	109/2000
《 2000 年商船 (安全) (貨船構造及檢驗) (1984 年 9 月 1 日之前建造的船舶) (修訂) 規例 (生效日期) 公告》 Merchant Shipping (Safety) (Cargo Ship Construction and Survey) (Ships Built Before 1 September 1984) (Amendment) Regulation (Commencement) Notice 2000	122/2000
《 2000 年商船 (安全) (貨船構造及檢驗) (1984 年 9 月 1 日或之後建造的船舶) (修訂) 規例 (生效日期) 公告》 Merchant Shipping (Safety) (Cargo Ship Construction and Survey) (Ships Built On or After 1 September 1984) (Amendment) Regulation (Commencement) Notice 2000	123/2000
《 2000 年商船 (安全) (貨船安全設備檢驗) (修訂) 規例 (生效日期) 公告》 Merchant Shipping (Safety) (Cargo Ship Safety Equipment Survey) (Amendment) Regulation (Commencement) Notice 2000	124/2000
《 2000 年商船 (安全) (載重線) (修訂) 規例 (生效日期) 公告》 Merchant Shipping (Safety) (Load Line) (Amendment) Regulation (Commencement) Notice 2000	125/2000
《 2000 年商船 (安全) (載重線) (船舶長度) (修訂) 規例 (生效日期) 公告》 Merchant Shipping (Safety) (Load Lines) (Length of Ship) (Amendment) Regulation (Commencement) Notice 2000	126/2000
《 2000 年商船 (安全) (客船構造及檢驗) (1984 年 9 月 1 日或之後建造的船舶) (修訂) 規例 (生效日期) 公告》 Merchant Shipping (Safety) (Passenger Ship Construction and Survey) (Ships Built On or After 1 September 1984) (Amendment) Regulation (Commencement) Notice 2000	127/2000

附錄 D – 續
APPENDIX D – Cont' d

法例名稱 Title	法例編號 L.N. No.
《 2000 年商船 (安全) (無線電裝設檢驗) (修訂) 條例 (生效日期) 公告》 Merchant Shipping (Safety) (Radio Installations Survey) (Amendment) Regulation (Commencement) Notice 2000	128/2000
《 2000 年船舶及港口管制 (修訂) 規例 (2000 年第 2 號) 規例》 Shipping and Port Control (Amendment) (No. 2) Regulation 2000	140/2000
《 2000 年船舶及港口管制 (修訂) 規例 (2000 年第 3 號) 規例》 Shipping and Port Control (Amendment) (No. 3) Regulation 2000	141/2000
《 2000 年船舶及港口管制 (修訂) 規例 (生效日期) 公告》 Shipping and Port Control (Amendment) Regulation (Commencement) Notice 2000	195/2000
《2000 年海上傾倒物料 (費用) (修訂) 規例》 Dumping at Sea (Fees) (Amendment) Regulation 2000	312/2000
《2000 年海岸公園及海岸保護區 (修訂) 規例》 Marine Parks and Marine Reserves (Amendment) Regulation 2000	350/2000

附錄 D – 續
APPENDIX D – Cont' d

香港條例
Ordinances of Hong Kong

條例名稱 Title	條例編號 Chapter No.
《港口管制 (貨物裝卸區) 條例》 Port Control (Cargo Working Areas) Ordinance	81
《船舶及港口管制條例》 Shipping and Port Control Ordinance	313
《商船 (安全) 條例》 Merchant Shipping (Safety) Ordinance	369
《海上傾倒物料條例》 Dumping at Sea Ordinance	466
《海岸公園條例》 Marine Parks Ordinance	476

附錄E
APPENDIX E

2000年在香港註冊的船舶
Ships Registered in Hong Kong, 2000

船名 Name of Vessel	註冊編號 Official No.	國際海事組織編號 IMO No.	總噸位 Gross Tonnage	淨噸位 Net Tonnage	備註 Remarks
NATIONAL DIGNITY	HK-0494	7912575	13228	7579	前註冊港：HONG KONG，船名"NATIONAL DIGNITY"。 PREVIOUS PORT: HONG KONG AS " NATIONAL DIGNITY".
CHRISTINA VENTURE	HK-0534	9189770	37831	23801	首次註冊。 FIRST REGISTRY.
DARYA RAAG	HK-0543	9112351	18675	10409	前註冊港：SINGAPORE，船名"SEAHORSE ALPHA"。 PREVIOUS PORT: SINGAPORE AS " SEAHORSE ALPHA ".
NATIONAL PRIDE	HK-0496	7915254	13228	7529	前註冊港：HONG KONG，船名"NATIONAL PRIDE"。 PREVIOUS PORT: HONG KONG AS " NATIONAL PRIDE".
OOCL CALIFORNIA	HK-0499	9102289	66046	30540	前註冊港：HONG KONG，船名"OOCL CALIFORNIA"。 PREVIOUS PORT: HONG KONG AS "OOCL CALIFORNIA".
NATIONAL HONOR	HK-0495	7915242	13228	7529	前註冊港：HONG KONG，船名"NATIONAL HONOR"。 PREVIOUS PORT: HONG KONG AS " NATIONAL HONOR".
FEDERAL ASAHI	HK-0526	9200419	20659	12019	首次註冊。 FIRST REGISTRY.
MARITIME ALLIANCE	HK-0509	8202525	22359	12455	前註冊港：SINGAPORE，船名"MARITIME VISION"。 PREVIOUS PORT: SINGAPORE AS "MARITIME VISION".
OOCL FRIENDSHIP	HK-0502	8420189	42023	21112	前註冊港：HONG KONG，船名"OOCL FRIENDSHIP"。 PREVIOUS PORT: HONG KONG AS "OOCL FRIENDSHIP".
OOCL CHINA	HK-0514	9108178	66046	30540	前註冊港：HONG KONG，船名"OOCL CHINA"。 PREVIOUS PORT: HONG KONG AS "OOCL CHINA".
SEA POWER	HK-0539	8418904	5266	2710	前註冊港：SINGAPORE，船名"NEW NANYANG NO.1"。 PREVIOUS PORT: SINGAPORE AS "NEW NANYANG NO.1".
KOTA JATI 康城	HK-0557	9205665	18502	9413	首次註冊。 FIRST REGISTRY.
FEDERAL RIDEAU	HK-0530	9200445	20659	12019	首次註冊。 FIRST REGISTRY.
DARYA SUR	HK-0554	9118563	18675	10409	前註冊港：SINGAPORE，船名"SEAHORSE BETA"。 PREVIOUS PORT: SINGAPORE AS "SEAHORSE BETA".
OOCL EXPORTER	HK-0516	7526493	41266	16438	前註冊港：HONG KONG，船名"OOCL EXPORTER"。 PREVIOUS PORT: HONG KONG AS "OOCL EXPORTER".
OOCL AMERICA	HK-0515	9102291	66046	30540	前註冊港：HONG KONG，船名"OOCL AMERICA"。 PREVIOUS PORT: HONG KONG AS "OOCL AMERICA".

附錄 E - 續

APPENDIX E - Cont' d

船名 Name of Vessel	註冊編號 Official No.	國際海事組織編號 IMO No.	總噸位 Gross Tonnage	淨噸位 Net Tonnage	備註 Remarks
OOCL FORTUNE	HK-0517	8400335	40978	23885	前註冊港：HONG KONG，船名"OOCL FORTUNE"。 PREVIOUS PORT: HONG KONG AS "OOCL FORTUNE".
GRACEOUS 溫和輪	HK-0561	9169378	85695	54413	前註冊港：PANAMA，船名"GRACEOUS"。 PREVIOUS PORT: PANAMA AS "GRACEOUS".
GREAT WISDOM 大睿	HK-0551	9213545	38910	24435	首次註冊。 FIRST REGISTRY.
SUN TAI ON 8	HK-0532	-	352	173	前註冊港：HONG KONG，船名"SUN TAI ON 8"。 PREVIOUS PORT: HONG KONG AS "SUN TAI ON 8".
SUN TAI ON 3	HK-0533	-	380	185	前註冊港：HONG KONG，船名"SUN TAI ON 3"。 PREVIOUS PORT: HONG KONG AS "SUN TAI ON 3".
MALABAR LIGHT	HK-0562	9146900	14743	7920	前註冊港：PANAMA，船名"HINRICH OLDENDORFF"。 PREVIOUS PORT: PANAMA AS "HINRICH OLDENDORFF".
KWK LEGACY	HK-0565	9035424	77273	47299	前註冊港：PANAMA，船名"KWK LEGACY"。 PREVIOUS PORT: PANAMA AS "KWK LEGACY".
MARINE PIONEER	HK-0549	9175107	5926	3354	前註冊港：MONROVIA，船名"MARINE PIONEER"。 PREVIOUS PORT: MONROVIA AS "MARINE PIONEER".
GREAT RAINBOW 鴻運	HK-0545	9139775	25889	12179	前註冊港：PANAMA，船名"GREAT RAINBOW"。 PREVIOUS PORT: PANAMA AS "GREAT RAINBOW".
HENFIELD	HK-0538	8701533	17018	11898	前註冊港：HONG KONG，船名"HENFIELD"。 PREVIOUS PORT: HONG KONG AS "HENFIELD".
OOCL FIDELITY	HK-0528	8407319	40980	23885	前註冊港：HONG KONG，船名"OOCL FIDELITY"。 PREVIOUS PORT: HONG KONG AS "OOCL FIDELITY".
HORSHAM	HK-0537	8706478	17018	11887	前註冊港：HONG KONG，船名"HORSHAM"。 PREVIOUS PORT: HONG KONG AS "HORSHAM".
OCEAN FORTUNE	HK-0559	8313049	18579	11570	前註冊港：PANAMA，船名"OCEAN FORTUNE"。 PREVIOUS PORT: PANAMA AS "OCEAN FORUTNE".
PRETTY SOURCE 麗源	HK-0548	9138941	27566	15231	前註冊港：PANAMA，船名"PRETTY SOURCE"。 PREVIOUS PORT: PANAMA AS "PRETTY SOURCE".
BOLIVAR LIGHT	HK-0567	9085675	13865	7738	前註冊港：PANAMA，船名"ROYAL HIGHNESS"。 PREVIOUS PORT: PANAMA AS "ROYAL HIGHNESS".
OOCL FAITH	HK-0529	8407307	40980	23885	前註冊港：HONG KONG，船名"OOCL FAITH"。 PREVIOUS PORT: HONG KONG AS "OOCL FAITH".
CAPTAIN CORELLI	HK-0566	9044425	16722	10435	前註冊港：PANAMA，船名"GOLDEN BELL"。 PREVIOUS PORT: PANAMA AS "GOLDEN BELL".

附錄 E - 續

APPENDIX E - Cont' d

船名 Name of Vessel	註冊編號 Official No.	國際海事組織編號 IMO No.	總噸位 Gross Tonnage	淨噸位 Net Tonnage	備註 Remarks
PACIFIC LOGGER	HK-0570	9218301	19717	11391	首次註冊。 FIRST REGISTRY.
JIU FENG 久豐	HK-0513	7929798	3341	1002	前註冊港：INDONESIA，船名"GAS JAYA"。 PREVIOUS PORT: INDONESIA AS "GAS JAYA".
DARYA TAAL	HK-0553	9126429	18675	10409	前註冊港：SINGAPORE，船名"SEAHORSE GAMMA"。 PREVIOUS PORT: SINGAPORE AS "SEAHORSE GAMMA".
PRETTY RUBY 麗寶	HK-0547	9138939	27566	15231	前註冊港：PANAMA，船名"PRETTY RUBY"。 PREVIOUS PORT: PANAMA AS "PRETTY RUBY".
GREAT FORTUNE 金運	HK-0546	9146388	25889	12179	前註冊港：PANAMA，船名"GREAT FORTUNE"。 PREVIOUS PORT: PANAMA AS "GREAT FORTUNE".
TAI CHANG	HK-0564	8015154	37420	22247	前註冊港：PANAMA，船名"TAI CHANG"。 PREVIOUS PORT: PANAMA AS "TAI CHANG".
LOWLANDS GRACE	HK-0574	8911499	77273	47299	前註冊港：PANAMA，船名"LOWLANDS GRACE"。 PREVIOUS PORT: PANAMA AS "LOWLANDS GRACE".
FEDERAL KIVALINA	HK-0563	9205885	20659	12019	首次註冊。 FIRST REGISTRY.
KOTA JAYA 宏城	HK-0576	9205677	18502	9413	首次註冊。 FIRST REGISTRY.
JIN CHANG	HK-0560	7621956	35902	19149	前註冊港：VANUATU，船名"JIN CHANG"。 PREVIOUS PORT: VANUATU AS "JIN CHANG".
FORTUNE LADY	HK-0571	9149366	38898	24517	前註冊港：PANAMA，船名"FORTUNE LADY"。 PREVIOUS PORT: PANAMA AS "FORTUNE LADY".
FEDERAL YUKON	HK-0568	9205897	20659	12019	首次註冊。 FIRST REGISTRY.
PENG CHAU	HK-0555	9221401	294	88	首次註冊。 FIRST REGISTRY.
GREAT MOTION 大運	HK-0480	9175468	18179	9626	前註冊港：SINGAPORE，船名"GREAT MOTION"。 PREVIOUS PORT: SINGAPORE AS "GREAT MOTION".
GREAT INTELLIGENCE 大智	HK-0552	9213557	38910	24435	首次註冊。 FIRST REGISTRY.
PYRAMID LIGHT	HK-0577	9033505	13706	7738	前註冊港：PANAMA，船名"RUBIN IRIS"。 PREVIOUS PORT: PANAMA AS "RUBIN IRIS".
CHEK CHAU	HK-0556	9221413	294	88	首次註冊。 FIRST REGISTRY.
HARTING	HK-0581	8701521	17018	11920	前註冊港：MONROVIA，船名"TRENT"。 PREVIOUS PORT: MONROVIA AS "TRENT".
HASTINGS	HK-0580	8701519	17018	11883	前註冊港：MONROVIA，船名"DANUBE"。 PREVIOUS PORT: MONROVIA AS "DANUBE".

附錄 E - 續

APPENDIX E - Cont' d

船名 Name of Vessel	註冊編號 Official No.	國際海事組織編號 IMO No.	總噸位 Gross Tonnage	淨噸位 Net Tonnage	備註 Remarks
GREAT SUCCESS 大成	HK-0478	9186364	16651	9332	前註冊港：SINGAPORE，船名"GREAT SUCCESS"。 PREVIOUS PORT: SINGAPORE AS "GREAT SUCCESS".
OCEAN PRIDE	HK-0578	9146950	37847	23677	前註冊港：PANAMA，船名"OCEAN PRIDE"。 PREVIOUS PORT: PANAMA AS "OCEAN PRIDE".
ISLAND FLING	HK-0587	-	31	9	前註冊港：GEORGE TOWN, CAYMAN ISLANDS， 船名"HIGHLAND FLING"。 PREVIOUS PORT: GEORGE TOWN, CAYMAN ISLANDS AS "HIGHLAND FLING".
FEDERAL HUDSON	HK-0569	9205902	20659	12019	首次註冊。 FIRST REGISTRY.
KWK LEGACY	HK-0565	9035424	77273	47299	前註冊港：HONG KONG，船名"KWK LEGACY"。 PREVIOUS PORT: HONG KONG AS "KWK LEGACY".
JIN HUI	HK-0582	9214082	28707	17597	首次註冊。 FIRST REGISTRY.
MARINE CHAMPION	HK-0550	9175092	5926	3354	前註冊港：MONROVIA，船名"MARINE CHAMPION"。 PREVIOUS PORT: MONROVIA AS "MARINE CHAMPION".
IONA	HK-0590	7356305	22988	12462	前註冊港：MALTA，船名"IONA"。 PREVIOUS PORT: MALTA AS "IONA".
HANDY RAINBOW	HK-0542	8323862	13881	8411	前註冊港：HONG KONG，船名"HANDY RAINBOW"。 PREVIOUS PORT: HONG KONG AS "HANDY RAINBOW".
BRIGHT VEGA	HK-0591	7513977	14496	8522	前註冊港：PANAMA，船名"BRIGHT VEGA"。 PREVIOUS PORT: PANAMA AS "BRIGHT VEGA".
TAIPAN	HK-0586	-	18.51	8.73	首次註冊。 FIRST REGISTRY.
HANDY LOGGER	HK-0523	8508474	14880	8920	前註冊港：HONG KONG，船名"HANDY LOGGER"。 PREVIOUS PORT: HONG KONG AS "HANDY LOGGER".
HANDY JADE	HK-0540	8223335	15269	9023	前註冊港：HONG KONG，船名"HANDY JADE"。 PREVIOUS PORT: HONG KONG AS "HANDY JADE".
OCEAN FAVOUR	HK-0579	9185798	37847	23677	前註冊港：PANAMA，船名"OCEAN FAVOUR"。 PREVIOUS PORT: PANAMA AS "OCEAN FAVOUR".
LOWLANDS GRACE	HK-0574	8911499	77273	47299	前註冊港：HONG KONG，船名"LOWLANDS GRACE"。 PREVIOUS PORT: HONG KONG AS "LOWLANDS GRACE".
HANDY LIGHT	HK-0541	8123236	20122	11342	前註冊港：HONG KONG，船名"HANDY LIGHT"。 PREVIOUS PORT: HONG KONG AS "HANDY LIGHT".
KIWI TRADER	HK-0592	9218313	19717	11391	首次註冊。 FIRST REGISTRY.

附錄 E - 續

APPENDIX E - Cont' d

船名 Name of Vessel	註冊編號 Official No.	國際海事組織編號 IMO No.	總噸位 Gross Tonnage	淨噸位 Net Tonnage	備註 Remarks
MINERAL SAKURA	HK-0597	9220990	87407	56768	首次註冊。 FIRST REGISTRY.
ARCADIA	HK-0600	-	20.32	0	首次註冊。 FIRST REGISTRY.
JADE WOMAN	HK-0602	-	25.5	25.5	前註冊港：GERMANY，船名"OVERDRAFT II"。 PREVIOUS PORT: GERMANY AS "OVERDRAFT II".
JIN AN	HK-0598	9214094	28707	17597	首次註冊。 FIRST REGISTRY.
BAO CHANG	HK-0588	7531280	23604	12610	前註冊港：PANAMA，船名"BAO CHANG"。 PREVIOUS PORT: PANAMA AS "BAO CHANG".
ISLAND FLING	HK-0587	-	31	9	前註冊港：HONG KONG，船名"ISLAND FLING"。 PREVIOUS PORT: HONG KONG AS "ISLAND FLING".
E TRADER	HK-0603	8103133	35191	21134	前註冊港：ITALY，船名"ASCENSION"。 PREVIOUS PORT: ITALY AS "ASCENSION".
SMOOTH SEA	HK-0599	7388827	66841	51429	前註冊港：HONDURAS，船名"BIG BAY"。 PREVIOUS PORT: HONDURAS AS "BIG BAY".
NEW WAY	HK-0601	8911346	4327	2608	前註冊港：KINGSTOWN，船名"NEW WAY"。 PREVIOUS PORT: KINGSTOWN AS "NEW WAY".
DONG YANG	HK-0607	7628150	13507	7108	前註冊港：NASSAU, BAHAMAS，船名"VINCENT DELMAS"。 PREVIOUS PORT: NASSAU, BAHAMAS AS "VINCENT DELMAS".
NAN YANG	HK-0610	7516618	8598	4381	前註冊港：BELIZE，船名"NAN YANG"。 PREVIOUS PORT: BELIZE AS "NAN YANG".
BEI YANG	HK-0611	7516620	8598	4381	前註冊港：BELIZE，船名"BEI YANG"。 PREVIOUS PORT: BELIZE AS "BEI YANG".
HARTING	HK-0581	8701521	17018	11920	前註冊港：HONG KONG，船名"HARTING"。 PREVIOUS PORT: HONG KONG AS "HARTING".
HASTINGS	HK-0580	8701519	17018	11883	前註冊港：HONG KONG，船名"HASTINGS"。 PREVIOUS PORT: HONG KONG AS "HASTINGS".
NEGO VICTORIA	HK-0606	9076387	16446	9409	前註冊港：PANAMA，船名"VICTORIA BAY"。 PREVIOUS PORT: PANAMA AS "VICTORIA BAY".
TIAN BAI FENG 天柏峰	HK-0609	9218167	39042	25025	首次註冊。 FIRST REGISTRY.
ARCADIA	HK-0600	-	16.18	16.18	前註冊港：HONG KONG，船名"ARCADIA"。 PREVIOUS PORT: HONG KONG AS "ARCADIA".
BILLY	HK-0615	-	38	19	首次註冊。 FIRST REGISTRY.

附錄 E - 續

APPENDIX E - Cont' d

船名 Name of Vessel	註冊編號 Official No.	國際海事組織編號 IMO No.	總噸位 Gross Tonnage	淨噸位 Net Tonnage	備註 Remarks
BIG FAIR 306	HK-0572	9227120	203	61	首次註冊。 FIRST REGISTRY.
BIG FAIR 307	HK-0573	9227132	203	61	首次註冊。 FIRST REGISTRY.
KINTYRE	HK-0612	7610684	10920	6381	前註冊港：REP. OF THE MARSHALL ISLANDS , 船名"RHONA A". PREVIOUS PORT: REP. OF THE MARSHALL ISLANDS AS "RHONA A".
MULL	HK-0613	7610672	10450	6227	前註冊港：LIMASSOL, CYPRUS , 船名"JANICE F". PREVIOUS PORT: LIMASSOL, CYPRUS AS "JANICE F".
E TRADER	HK-0603	8103133	35191	21134	前註冊港：HONG KONG, 船名"E TRADER". PREVIOUS PORT: HONG KONG AS "E TRADER".
JIAN HUA 建華	HK-0617	7419145	11280	6661	前註冊港：MALTA, 船名"RA DIKA". PREVIOUS PORT: MALTA AS "RA DIKA".
GERALD	HK-0618	-	27.36	27.36	前註冊港：FRANCE, 船名"GERALD". PREVIOUS PORT: FRANCE AS "GERALD".
HENG SHUN	HK-0621	7710642	9767	6205	前註冊港：LIMASSOL, CYPRUS , 船名"LARAK". PREVIOUS PORT: LIMASSOL, CYPRUS AS "LARAK".
NEW ASIA NO. 1 新亞壹號	HK-0575	9230397	881	380	首次註冊。 FIRST REGISTRY.
CHOI FUNG	708772	-	42.72	15.5	前註冊港：HONG KONG, 船名"CHOI FUNG". PREVIOUS PORT: HONG KONG AS "CHOI FUNG".
DARYA CHAND	HK-0585	8317019	26014	13673	前註冊港：MONROVIA, 船名"DARYA CHAND". PREVIOUS PORT: MONROVIA AS "DARYA CHAND".
FEDERAL WELLAND	HK-0604	9205926	20659	12019	首次註冊。 FIRST REGISTRY.
STAR LIGHT 星光	HK-0627	8421846	969	394	前註冊港：PANAMA, 船名"STAR LIGHT". PREVIOUS PORT: PANAMA AS "STAR LIGHT".
SAGA CREST	HK-0625	9014066	29381	14155	前註冊港：PANAMA, 船名"SAGA CREST". PREVIOUS PORT: PANAMA AS "SAGA CREST".
OOCL SAN FRANCISCO	HK-0589	9199268	66677	39516	首次註冊。 FIRST REGISTRY.
MAN HONG 8 萬航捌號	HK-0619	7424554	2958	1889	前註冊港：KINGSTOWN, 船名"HALAVILA". PREVIOUS PORT: KINGSTOWN AS "HALAVILA".
SMOOTH SEA	HK-0599	7388827	66841	51429	前註冊港：HONG KONG, 船名"SMOOTH SEA". PREVIOUS PORT: HONG KONG AS "SMOOTH SEA".
TIAN ZHU FENG 天柱峰	HK-0626	9203485	38767	25807	首次註冊。 FIRST REGISTRY.

附錄 E - 續

APPENDIX E - Cont' d

船名 Name of Vessel	註冊編號 Official No.	國際海事組織編號 IMO No.	總噸位 Gross Tonnage	淨噸位 Net Tonnage	備註 Remarks
DE LI 德利	HK-0633	7811197	1389	416	前註冊港：CHINA，船名"DE LI"。 PREVIOUS PORT: CHINA AS "DE LI".
CHEKIANG	HK-0630	9003835	18391	8465	前註冊港：PANAMA，船名"CHEKIANG"。 PREVIOUS PORT: PANAMA AS "CHEKIANG".
AUGUST MOON	HK-0616	-	108.32	59.97	首次註冊。 FIRST REGISTRY.
MILLENNIUM VENTURE	HK-0622	9189782	37831	23801	首次註冊。 FIRST REGISTRY.
HAI LUNG NO.2 海龍二號	HK-0595	8891352	1391	547	前註冊港：KINGSTOWN，船名"HAI LUNG NO.2"。 PREVIOUS PORT: KINGSTOWN AS "HAI LUNG NO.2".
WAN LUNG 運隆	HK-0596	8891340	1391	547	前註冊港：KINGSTOWN，船名"WAN LUNG"。 PREVIOUS PORT: KINGSTOWN AS "WAN LUNG".
RUBIN GRACE	HK-0635	9081150	85407	54621	前註冊港：PANAMA，船名"RUBIN GRACE"。 PREVIOUS PORT: PANAMA AS "RUBIN GRACE".
YONG FENG	HK-0624	9216418	39873	25899	首次註冊。 FIRST REGISTRY.
MAERSK TOKYO	HK-0637	7825411	43325	18638	前註冊港：PANAMA，船名"MAERSK TOKYO"。 PREVIOUS PORT: PANAMA AS "MAERSK TOKYO".
LA SELVA	HK-0639	9189249	87363	57751	前註冊港：PANAMA，船名"LA SELVA"。 PREVIOUS PORT: PANAMA AS "LA SELVA".
XINYUAN HAI	HK-0638	8511990	95291	60236	前註冊港：PANAMA，船名"LOWLANDS SUNRISE"。 PREVIOUS PORT: PANAMA AS "LOWLANDS SUNRISE".
DARYA LAKSHMI	HK-0640	8308898	22531	12548	前註冊港：MONROVIA，船名"DARYA LAKSHMI"。 PREVIOUS PORT: MONROVIA AS "DARYA LAKSHMI".
DARYA TARA	HK-0631	9218387	38392	24724	首次註冊。 FIRST REGISTRY.
BOAVENTURA 鴻運1號	HK-0634	8324476	495	251	前註冊港：PANAMA，船名"BOAVENTURA"。 PREVIOUS PORT: PANAMA AS "BOAVENTURA".
MAERSK RHINE	HK-0620	9167136	22181	7635	前註冊港：DENMARK，船名"RAS MAERSK"。 PREVIOUS PORT: DENMARK AS "RAS MAERSK".
CHANGSHA	HK-0629	9003847	18391	8465	前註冊港：PANAMA，船名"CHANGSHA"。 PREVIOUS PORT: PANAMA AS "CHANGSHA".
SHANWEI 汕尾	HK-0643	7705611	289	87	前註冊港：PANAMA，船名"SHANWEI"。 PREVIOUS PORT: PANAMA AS "SHANWEI".
YONG HUAN	HK-0628	9236169	40437	25855	首次註冊。 FIRST REGISTRY.
OOCL CHICAGO	HK-0614	9199270	66677	39516	首次註冊。 FIRST REGISTRY.

附錄 E - 續

APPENDIX E - Cont' d

船名 Name of Vessel	註冊編號 Official No.	國際海事組織編號 IMO No.	總噸位 Gross Tonnage	淨噸位 Net Tonnage	備註 Remarks
ROMAN BAY	HK-0632	9016674	10381	5253	前註冊港：PANAMA，船名"ROMAN BAY"。 PREVIOUS PORT: PANAMA AS "ROMAN BAY".
MAERSK TACOMA	HK-0642	7909425	37238	15336	前註冊港：PANAMA，船名"MAERSK TACOMA"。 PREVIOUS PORT: PANAMA AS "MAERSK TACOMA".
TIAN YANG FENG 天楊峰	HK-0644	9227699	38860	25448	首次註冊。 FIRST REGISTRY.
HEBEI DILIGENCE	HK-0656	8102610	39634	23828	前註冊港：KINGSTOWN，船名"HEBEI DILIGENCE"。 PREVIOUS PORT: KINGSTOWN AS "HEBEI DILIGENCE".
CANNANORE	HK-0649	8601824	24248	12317	前註冊港：NASSAU, BAHAMAS，船名"TOMIS WEST"。 PREVIOUS PORT: NASSAU, BAHAMAS AS "TOMIS WEST".
MARVELLOUS 超德輪	HK-0641	9213375	86201	56565	首次註冊。 FIRST REGISTRY.
COROMANDEL	HK-0651	8601848	24248	12317	前註冊港：NASSAU, BAHAMAS，船名"TOMIS NORTH"。 PREVIOUS PORT: NASSAU, BAHAMAS AS "TOMIS NORTH".
CAPRICE VENTURE	HK-0636	9237395	16963	10498	首次註冊。 FIRST REGISTRY.
MINERAL SAKURA	HK-0597	9220990	87407	56768	前註冊港：HONG KONG，船名"MINERAL SAKURA"。 PREVIOUS PORT: HONG KONG AS "MINERAL SAKURA".
MANDALAY	HK-0653	9037068	24248	12317	前註冊港：NASSAU, BAHAMAS，船名"TOMIS CLOUD"。 PREVIOUS PORT: NASSAU, BAHAMAS AS "TOMIS CLOUD".
CATHAY	HK-0650	8601812	24248	12317	前註冊港：MALTA，船名"TOMIS SOUTH"。 PREVIOUS PORT: MALTA AS "TOMIS SOUTH".
NITRO	HK-0665	-	17	13	前註冊港：NEW ZEALAND，船名"NITRO"。 PREVIOUS PORT: NEW ZEALAND AS "NITRO".
SAGA SPRAY	HK-0663	9014078	29381	14155	前註冊港：NORWAY，船名"SAGA SPRAY"。 PREVIOUS PORT: NORWAY AS "SAGA SPRAY".
CAPE JERVIS	HK-0258	8220242	16950	9905	前註冊港：HONG KONG，船名"CAPE JERVIS"。 PREVIOUS PORT: HONG KONG AS "CAPE JERVIS".
CAPE HOWE	HK-0297	8213835	17126	9905	前註冊港：HONG KONG，船名"CAPE HOWE"。 PREVIOUS PORT: HONG KONG AS "CAPE HOWE".

附錄F
APPENDIX F

2000年終止在香港註冊的船舶
Ships De-registered in Hong Kong, 2000

船名 Name of Vessel	註冊編號 Official No.	國際海事組織編號 IMO No.	總噸位 Gross Tonnage	淨噸位 Net Tonnage	備註 Remarks
SUNSHINE III	702383	-	39.56	25.23	過渡期船舶經移轉後不再是可註冊船舶。 TRANSITIONAL SHIP CEASES TO BE REGISTRABLE HAVING BEEN TRANSFERRED.
NATIONAL DIGNITY	HK-0494	7912575	13228	7529	船舶由臨時註冊轉為正式註冊。 CHANGE FROM PROVISIONAL TO FULL REGISTRATION.
NATIONAL PRIDE	HK-0496	7915254	13228	7529	船舶由臨時註冊轉為正式註冊。 CHANGE FROM PROVISIONAL TO FULL REGISTRATION.
LADY EMILY	HK-0180	8507298	11996	7197	船東要求終止註冊。 REGISTRY CLOSED ON REQUEST OF OWNER.
OOCL CALIFORNIA	HK-0499	9102289	66046	30540	船舶由臨時註冊轉為正式註冊。 CHANGE FROM PROVISIONAL TO FULL REGISTRATION.
P&O NEDLLOYD TARANAKI	HK-0308	7900041	29259	8778	船東要求終止註冊。 REGISTRY CLOSED ON REQUEST OF OWNER.
NGAN CHAU	HK-0194	9105255	456	136	船東要求終止註冊。 REGISTRY CLOSED ON REQUEST OF OWNER.
NATIONAL HONOR	HK-0495	7915242	13228	7529	船舶由臨時註冊轉為正式註冊。 CHANGE FROM PROVISIONAL TO FULL REGISTRATION.
OOCL FRIENDSHIP	HK-0502	8420189	42023	21112	船舶由臨時註冊轉為正式註冊。 CHANGE FROM PROVISIONAL TO FULL REGISTRATION.
OOCL CHINA	HK-0514	9108178	66046	30540	船舶由臨時註冊轉為正式註冊。 CHANGE FROM PROVISIONAL TO FULL REGISTRATION.
GRIFFIN SUN	HK-0213	8118126	18964	10636	船東要求終止註冊。 REGISTRY CLOSED ON REQUEST OF OWNER.
VES FAIR 12	HK-0414	9198707	192	57	船東要求終止註冊。 REGISTRY CLOSED ON REQUEST OF OWNER.
LARK V	384746	-	71.41	47.84	船東要求終止註冊。 REGISTRY CLOSED ON REQUEST OF OWNER.
OOCL EXPORTER	HK-0516	7526493	41266	16438	船舶由臨時註冊轉為正式註冊。 CHANGE FROM PROVISIONAL TO FULL REGISTRATION.

附錄F - 續

APPENDIX F - Cont'd

船名 Name of Vessel	註冊編號 Official No.	國際海事組織編號 IMO No.	總噸位 Gross Tonnage	淨噸位 Net Tonnage	備註 Remarks
OOCL AMERICA	HK-0515	9102291	66046	30540	船舶由臨時註冊轉為正式註冊。 CHANGE FROM PROVISIONAL TO FULL REGISTRATION.
OOCL FORTUNE	HK-0517	8400335	40978	23885	船舶由臨時註冊轉為正式註冊。 CHANGE FROM PROVISIONAL TO FULL REGISTRATION.
SUN TAI ON 8	HK-0532	-	365	204	船舶由臨時註冊轉為正式註冊。 CHANGE FROM PROVISIONAL TO FULL REGISTRATION.
SUN TAI ON 3	HK-0533	-	380	185	船舶由臨時註冊轉為正式註冊。 CHANGE FROM PROVISIONAL TO FULL REGISTRATION.
P&O NEDLLOYD PIRAEUS	HK-0316	7900065	31207	9363	船東要求終止註冊。 REGISTRY CLOSED ON REQUEST OF OWNER.
MAN CHIU	706803	8222678	1439	592	船東要求終止註冊。 REGISTRY CLOSED ON REQUEST OF OWNER.
MAN KWONG	708323	8222680	1415	567	船東要求終止註冊。 REGISTRY CLOSED ON REQUEST OF OWNER.
MAN FEE	708778	8705905	1510	602	船東要求終止註冊。 REGISTRY CLOSED ON REQUEST OF OWNER.
MAN KWOK	711273	8222707	1510	602	船東要求終止註冊。 REGISTRY CLOSED ON REQUEST OF OWNER.
MAN HING	702375	8225864	777.34	369.04	船東要求終止註冊。 REGISTRY CLOSED ON REQUEST OF OWNER.
MAN FAT	702385	8225852	777.34	369.04	船東要求終止註冊。 REGISTRY CLOSED ON REQUEST OF OWNER.
MAN CHUNG	399904	8214425	233.77	99.2	船東要求終止註冊。 REGISTRY CLOSED ON REQUEST OF OWNER.
MAN YING	399919	8219865	483	193	船東要求終止註冊。 REGISTRY CLOSED ON REQUEST OF OWNER.
MAN HEEN	706792	8328525	232.68	95.98	船東要求終止註冊。 REGISTRY CLOSED ON REQUEST OF OWNER.
MAN KIT	706796	8328537	232.68	95.98	船東要求終止註冊。 REGISTRY CLOSED ON REQUEST OF OWNER.
KA - WAH	702393	-	72.13	48.33	過渡期船舶經移轉後不再是可註冊船舶。 TRANSITIONAL SHIP CEASES TO BE REGISTRABLE HAVING BEEN TRANSFERRED.

附錄F - 續
APPENDIX F - Cont'd

船名 Name of Vessel	註冊編號 Official No.	國際海事組織編號 IMO No.	總噸位 Gross Tonnage	淨噸位 Net Tonnage	備註 Remarks
FAR EAST V	HK-0148	-	92	28	船東要求終止註冊。 REGISTRY CLOSED ON REQUEST OF OWNER.
HORSHAM	HK-0537	8706478	17018	11887	船舶由臨時註冊轉為正式註冊。 CHANGE FROM PROVISIONAL TO FULL REGISTRATION.
HENFIELD	HK-0538	8701533	17018	11898	船舶由臨時註冊轉為正式註冊。 CHANGE FROM PROVISIONAL TO FULL REGISTRATION.
OOCL FIDELITY	HK-0528	8407319	40980	23885	船舶由臨時註冊轉為正式註冊。 CHANGE FROM PROVISIONAL TO FULL REGISTRATION.
OOCL FAITH	HK-0529	8407307	40980	23885	船舶由臨時註冊轉為正式註冊。 CHANGE FROM PROVISIONAL TO FULL REGISTRATION.
FUNG WONG SHAN	196791	5124215	233.74	112.5	未能繳交噸位年費。 FAILURE TO PAY ANNUAL TONNAGE CHARGE.
OOCL ALLIANCE	HK-0302	7418919	16895	5290	船東要求終止註冊。 REGISTRY CLOSED ON REQUEST OF OWNER.
DISCOVERY BAY	HK-0524	8302246	11576	6180	船東要求終止註冊。 REGISTRY CLOSED ON REQUEST OF OWNER.
FAREAST VICTORY 華利	HK-0202	9055620	38267	23975	船東要求終止註冊。 REGISTRY CLOSED ON REQUEST OF OWNER.
SAMANA	711267	-	11.34	11.34	未能繳交噸位年費。 FAILURE TO PAY ANNUAL TONNAGE CHARGE.
TAI FAT	708315	8512140	273	110	船東要求終止註冊。 REGISTRY CLOSED ON REQUEST OF OWNER.
OOCL APPLAUSE	HK-0055	7418907	16544	5294	船東要求終止註冊。 REGISTRY CLOSED ON REQUEST OF OWNER.
ENCOURAGER	HK-0138	7638648	15111	6756	船東要求終止註冊。 REGISTRY CLOSED ON REQUEST OF OWNER.
ARAFURA	HK-0026	8917778	37902	14496	船東要求終止註冊。 REGISTRY CLOSED ON REQUEST OF OWNER.
KWK LEGACY	HK-0565	9035424	77273	47299	船舶由臨時註冊轉為正式註冊。 CHANGE FROM PROVISIONAL TO FULL REGISTRATION.
SHEUNG SHIE	343834	-	21.64	15.47	未能繳交噸位年費。 FAILURE TO PAY ANNUAL TONNAGE CHARGE.

附錄F - 續

APPENDIX F - Cont'd

船名 Name of Vessel	註冊編號 Official No.	國際海事組織編號 IMO No.	總噸位 Gross Tonnage	淨噸位 Net Tonnage	備註 Remarks
FARENCO 華夏	HK-0231	9056260	79694	48904	船東要求終止註冊。 REGISTRY CLOSED ON REQUEST OF OWNER.
HANDY RAINBOW	HK-0542	8323862	13881	8411	船舶由臨時註冊轉為正式註冊。 CHANGE FROM PROVISIONAL TO FULL REGISTRATION.
HANDY LOGGER	HK-0523	8508474	14880	8920	船舶由臨時註冊轉為正式註冊。 CHANGE FROM PROVISIONAL TO FULL REGISTRATION.
HANDY JADE	HK-0540	8223335	15269	9023	船舶由臨時註冊轉為正式註冊。 CHANGE FROM PROVISIONAL TO FULL REGISTRATION.
LOWLANDS GRACE	HK-0574	8911499	77273	47299	船舶由臨時註冊轉為正式註冊。 CHANGE FROM PROVISIONAL TO FULL REGISTRATION.
HANDY LIGHT	HK-0541	8123236	20122	11342	船舶由臨時註冊轉為正式註冊。 CHANGE FROM PROVISIONAL TO FULL REGISTRATION.
UNIVERSUS 1	HK-0014	-	91.04	60.36	船已拆散。 SHIP BROKEN UP.
MING	HK-0312	-	30.79	29.38	船東要求終止註冊。 REGISTRY CLOSED ON REQUEST OF OWNER.
ISLAND FLING	HK-0587	-	31	9	船舶由臨時註冊轉為正式註冊。 CHANGE FROM PROVISIONAL TO FULL REGISTRATION.
BRIAN BORU	HK-0022	-	94.36	67.57	船已沉沒。 VESSEL SUNK.
CAPE MERCURY	HK-0486	9132686	83658	55405	船東要求終止註冊。 REGISTRY CLOSED ON REQUEST OF OWNER.
HASTINGS	HK-0580	8701519	17018	11883	船舶由臨時註冊轉為正式註冊。 CHANGE FROM PROVISIONAL TO FULL REGISTRATION.
HARTING	HK-0581	8701521	17018	11920	船舶由臨時註冊轉為正式註冊。 CHANGE FROM PROVISIONAL TO FULL REGISTRATION.
ARCADIA	HK-0600	-	20.32	0	船舶由臨時註冊轉為正式註冊。 CHANGE FROM PROVISIONAL TO FULL REGISTRATION.
TROPIC BIRD	711268	-	15.64	15.64	未能繳交噸位年費。 FAILURE TO PAY ANNUAL TONNAGE CHARGE.
CHINA MOUNTAIN 中山	HK-0248	8308862	22564	12494	船東要求終止註冊。 REGISTRY CLOSED ON REQUEST OF OWNER.

附錄F - 續
APPENDIX F - Cont'd

船名 Name of Vessel	註冊編號 Official No.	國際海事組織編號 IMO No.	總噸位 Gross Tonnage	淨噸位 Net Tonnage	備註 Remarks
E TRADER	HK-0603	8103133	35191	21134	船舶由臨時註冊轉為正式註冊。 CHANGE FROM PROVISIONAL TO FULL REGISTRATION.
BIG FAIR 306	HK-0572	9227120	203	61	船東要求終止註冊。 REGISTRY CLOSED ON REQUEST OF OWNER.
BIG FAIR 307	HK-0573	9227132	203	61	船東要求終止註冊。 REGISTRY CLOSED ON REQUEST OF OWNER.
CHOI FUNG	708772	-	42.72	15.5	過渡期船舶經移轉後不再是可註冊船舶。 TRANSITIONAL SHIP CEASES TO BE REGISTRABLE HAVING BEEN TRANSFERRED.
NEGO CAROL	HK-0219	8520226	17264	9528	船東要求終止註冊。 REGISTRY CLOSED ON REQUEST OF OWNER.
SMOOTH SEA	HK-0599	7388827	66841	51429	船舶由臨時註冊轉為正式註冊。 CHANGE FROM PROVISIONAL TO FULL REGISTRATION.
P&O NEDLLOYD NAPIER	HK-0025	7020401	25407	9625	船東要求終止註冊。 REGISTRY CLOSED ON REQUEST OF OWNER.
DARYA KAMAL	384795	8010752	17770	10500	船東要求終止註冊。 REGISTRY CLOSED ON REQUEST OF OWNER.
NEGO WES	HK-0257	8307492	19340	12311	船東要求終止註冊。 REGISTRY CLOSED ON REQUEST OF OWNER.
CAPTAIN CORELLI	HK-0566	9044425	16722	10435	船東要求終止註冊。 REGISTRY CLOSED ON REQUEST OF OWNER.
NEW RUBY 6	HK-0301	6600723	201	92	船舶售予非合資格的人。 SHIP SOLD TO UNQUALIFIED PERSON.
HARMONY ACE	HK-0109	9047996	47519	14256	船東要求終止註冊。 REGISTRY CLOSED ON REQUEST OF OWNER.
EASTERN VENTURE	HK-0519	9077305	25725	14472	船東要求終止註冊。 REGISTRY CLOSED ON REQUEST OF OWNER.
CONTESSA	706805	-	18.73	18.73	過渡期船舶經移轉後不再是可註冊船舶。 TRANSITIONAL SHIP CEASES TO BE REGISTRABLE HAVING BEEN TRANSFERRED.
OLYMPIC VENTURE	HK-0484	9113551	25202	11981	船東要求終止註冊。 REGISTRY CLOSED ON REQUEST OF OWNER.

附錄F - 續
APPENDIX F - Cont'd

船名 Name of Vessel	註冊編號 Official No.	國際海事組織編號 IMO No.	總噸位 Gross Tonnage	淨噸位 Net Tonnage	備註 Remarks
MINERAL SAKURA	HK-0597	9220990	87407	56768	船東要求終止註冊。 REGISTRY CLOSED ON REQUEST OF OWNER.
V28	HK-0337	-	1075	322	船東要求終止註冊。 REGISTRY CLOSED ON REQUEST OF OWNER.
V25	HK-0172	8876091	1075	322	船東要求終止註冊。 REGISTRY CLOSED ON REQUEST OF OWNER.
HYF 11	356561	-	48.59	28.24	船東要求終止註冊。 REGISTRY CLOSED ON REQUEST OF OWNER.
CAPE JERVIS	HK-0258	8220242	16950	9905	船東要求終止註冊。 REGISTRY CLOSED ON REQUEST OF OWNER.
CAPE HOWE	HK-0297	8213835	17126	9905	船東要求終止註冊。 REGISTRY CLOSED ON REQUEST OF OWNER.

附錄 G
APPENDIX G

2000年輔航設備
Aids to Navigation, 2000

I. 使用中 IN USE (as at 31.12.2000)	燈浮標 燈航標 雷達信標 霧角	Lighted Buoy Lighted Beacon Racon Fog Horn	113 355 1 7
-------------------------------------	--------------------------	---	----------------------

II. 本年改進的輔航裝置
AIDS REPROVISIONED DURING THE YEAR

- | | | |
|------------------------------------|---|---|
| 1. 碇泊泡 B-20
Mooring Buoy B-20 | - | 該燈於2月期間換上全新太陽能系統，用以提高航標的可靠性。
The light was solarized to increase the reliability of the beacon in February. |
| 2. 碇泊泡 A-39
Mooring Buoy A-39 | - | 該燈於2月期間換上全新太陽能系統，用以提高航標的可靠性。
The light was solarized to increase the reliability of the beacon in February. |
| 3. 小鴉洲村碼頭
Siu A Chau Tsuen Pier | - | 該燈於3月期間換上全新太陽能系統，用以提高航標的可靠性。
The light was solarized to increase the reliability of the beacon in March. |
| 4. 橫瀾
Waglan | - | 該燈於3月期間換上全新現代化器材，用以提高其可靠性。
The light was replaced with modern equipment for higher reliability in March. |
| 5. 大鴉洲
Tai A Chau | - | 該燈於2月期間換上全新現代化器材，用以提高光達距離。
The light was upgraded with modern equipment for better luminous range in February. |
| 6. 長洲 5
Cheung Chau 5 | - | 該燈於1月期間換上全新現代化器材，用以提高其可靠性。
The light was replaced with modern equipment for higher reliability in January. |
| 7. 長洲 6
Cheung Chau 6 | - | 該燈於1月期間換上全新現代化器材，用以提高其可靠性。
The light was replaced with modern equipment for higher reliability in January. |
| 8. 筲箕灣 B
Shau Kei Wan B | - | 該燈於1月期間換上全新現代化器材，用以提高光達距離。
The light was upgraded with modern equipment for better luminous range in January. |
| 9. 筲箕灣 D
Shau Kei Wan D | - | 該燈於1月期間換上全新現代化器材，用以提高光達距離。
The light was upgraded with modern equipment for better luminous range in January. |
| 10. 東龍洲碼頭
Tung Lung Chau Pier | - | 該燈於2月期間換上全新現代化器材，用以提高光達距離。
The light was upgraded with modern equipment for better luminous range in February. |

附錄 G - 續

APPENDIX G - Cont'd

11. 石角咀
Shek Kok Tsui
 - 該燈的後備電池容量於3月期間加強，用以提高航標的可靠性。
 - The capacity of standby battery was enhanced to increase the reliability of the beacon in March.
12. 礮頭碼頭
San Tau Pier
 - 該燈於1月期間換上全新現代化器材，用以提高其可靠性。
 - The light was replaced with modern equipment for higher reliability in January.
13. 黃金海岸 2
Gold Coast 2
 - 該燈於2月期間更換所有太陽能電池，用以提高航標的可靠性。
 - All the solar batteries were renewed in order to increase the reliability of the beacon in February.
14. 下棚(交通燈)
Ha Pang (Traffic Light)
 - 該燈於2月期間換上全新現代化器材，用以提高其可靠性。
 - The light was replaced with modern equipment for higher reliability in February.
15. 鹿頸碼頭
Luk Keng Pier
 - 為配合燈塔重修安排，整套航標燈系統曾經拆回工場進行檢修和調校。該燈並於4月期間換上全新現代化器材，用以提高航標的可靠性。
 - The lighting equipment had been returned to workshop for overhaul following the rehabilitation of beacon structure. The light was then upgraded with modern equipment to increase the reliability of beacon in April.
16. 銀礦灣
Silver Mine Bay
 - 該燈於4月期間換上全新太陽能系統，用以提高航標的可靠性。
 - The light was solarized to increase the reliability of the beacon in April.
17. 白角
Pak Kok
 - 該燈於4月期間換上全新現代化器材，用以提高光達距離。
 - The light was upgraded with modern equipment for better luminous range in April.
18. 海心石
Datum Rock
 - 該燈於4月期間換上全新現代化器材，用以提高其可靠性。
 - The light was replaced with modern equipment for higher reliability in April.
19. 香港仔南 1
Aberdeen South 1
 - 為配合燈塔重修安排，整套航標燈系統曾經拆回工場進行檢修和調校。該燈並於5月期間換上全新現代化器材，用以提高航標的可靠性。
 - The lighting equipment had been returned to workshop for overhaul following the rehabilitation of beacon structure. The light was then upgraded with modern equipment to increase the reliability of beacon in May.
20. 下棚
Ha Pang
 - 為配合燈塔重修安排，整套航標燈系統曾經拆回工場進行檢修和調校。該燈並於6月期間換上全新現代化器材，用以提高航標的可靠性。
 - The lighting equipment had been returned to workshop for overhaul following the rehabilitation of beacon structure. The light was then upgraded with modern equipment to increase the reliability of beacon in June.
21. 三門仔碼頭
Sam Mun Tsai Pier
 - 該燈於4月期間換上全新現代化器材，用以提高光達距離。
 - The light was upgraded with modern equipment for better luminous range in April.
22. 深井碼頭
Sham Tseng Pier
 - 該燈於4月期間換上全新現代化器材，用以提高光達距離。
 - The light was upgraded with modern equipment for better luminous range in April.
23. 葵青橋西石
Kwai Tsing Bridge West Rock
 - 該燈於4月期間換上全新現代化器材，用以提高光達距離。
 - The light was upgraded with modern equipment for better luminous range in April.

附錄 G - 續

APPENDIX G - Cont'd

- | | |
|---|---|
| 24. 葵青橋東石
Kwai Tsing Bridge East Rock | - 該燈於4月期間換上全新現代化器材，用以提高光達距離。
- The light was upgraded with modern equipment for better luminous range in April. |
| 25. 青洲碼頭
Green Island Pier | - 該燈於4月期間換上全新現代化器材，用以提高光達距離。
- The light was upgraded with modern equipment for better luminous range in April. |
| 26. 高流灣碼頭
Ko Lau Wan Pier | - 該燈於5月期間換上全新太陽能系統，用以提高航標的可靠性。
- The light was solarized to increase the reliability of the beacon in May. |
| 27. 黃石碼頭
Wong Shek Pier | - 該燈於6月期間換上全新太陽能系統，用以提高航標的可靠性。
- The light was solarized to increase the reliability of the beacon in June. |
| 28. 鴨洲碼頭
Ap Chau Pier | - 該燈於6月期間換上全新太陽能系統，用以提高航標的可靠性。
- The light was solarized to increase the reliability of the beacon in June. |
| 29. 荔枝窩碼頭
Lai Chi Wo Pier | - 該燈於6月期間換上全新太陽能系統，用以提高航標的可靠性。
- The light was solarized to increase the reliability of the beacon in June. |
| 30. 青荃橋西石
Tsing Tsuen Bridge West Rock | - 該燈於9月期間換上全新現代化器材，用以提高其可靠性。
- The light was replaced with modern equipment for higher reliability in September. |
| 31. 青荃橋東石
Tsing Tsuen Bridge East Rock | - 該燈於9月期間換上全新現代化器材，用以提高其可靠性。
- The light was replaced with modern equipment for higher reliability in September. |
| 32. 龍山排
Lung Shan Pai | - 該燈於9月期間換上全新現代化器材，用以提高光達距離。
- The light was upgraded with modern equipment for better luminous range in September. |
| 33. 燈洲
Tang Chau | - 該燈於7月期間更換所有太陽能電池，用以提高航標的可靠性。
- All the solar batteries were renewed in order to increase the reliability of the beacon in July. |
| 34. 濠西碼頭
Kau Sai Pier | - 該燈於7月期間換上全新現代化器材，用以提高光達距離。
- The light was upgraded with modern equipment for better luminous range in July. |
| 35. 屯門 4
Tuen Mun 4 | - 該燈於7月期間更換所有太陽能電池，用以提高航標的可靠性。
- All the solar batteries were renewed in order to increase the reliability of the beacon in July. |
| 36. 鶴咀
Cape D'Aguilar | - 該燈於8月期間更換所有電池，用以提高航標的可靠性。
- All the batteries were renewed in order to increase the reliability of the beacon in August. |
| 37. 青龍頭碼頭
Tsing Lung Tau Pier | - 為配合燈塔重修安排，整套航標燈系統曾經拆回工場進行檢修和調校。該燈並於9月期間換上全新現代化器材，用以提高航標的可靠性。
- The lighting equipment had been returned to workshop for overhaul following the rehabilitation of beacon structure. The light was then upgraded with modern equipment to increase the reliability of beacon in September. |

附錄 G - 續

APPENDIX G - Cont'd

- | | |
|---|---|
| 38. 海尾灣(交通燈)
Hoi Mei Wan (Traffic Light) | - 該燈於8月期間換上全新現代化器材，用以提高其可靠性。
- The light was replaced with modern equipment for higher reliability in August. |
| 39. 后海灣 F
Deep Bay F | - 該燈於9月期間更換所有太陽能電池，用以提高航標的可靠性。
- All the solar batteries were renewed in order to increase the reliability of the beacon in September. |
| 40. 沙田海
Shatin Hoi | - 該燈於9月期間更換所有太陽能電池，用以提高航標的可靠性。
- All the solar batteries were renewed in order to increase the reliability of the beacon in September. |
| 41. 沙橋頭碼頭
Sha Kiu Tau Pier | - 該燈於7月期間換上全新現代化器材，用以提高光達距離。
- The light was upgraded with modern equipment for better luminous range in July. |
| 42. 赤徑渡輪碼頭
Chek Keng Ferry Pier | - 該燈於7月期間換上全新現代化器材，用以提高光達距離。
- The light was upgraded with modern equipment for better luminous range in July. |
| 43. 大澳碼頭
Tai O Pier | - 該燈於7月期間換上全新現代化器材，用以提高光達距離。
- The light was upgraded with modern equipment for better luminous range in July. |
| 44. 谷埔碼頭
Kuk Po Pier | - 該燈於7月期間換上全新現代化器材，用以提高光達距離。
- The light was upgraded with modern equipment for better luminous range in July. |
| 45. 橋咀洲碼頭
Kiu Tsui Chau Pier | - 該燈於8月期間換上全新現代化器材，用以提高光達距離。
- The light was upgraded with modern equipment for better luminous range in August. |
| 46. 廈門灣碼頭
Hap Mun Wan Pier | - 該燈於8月期間換上全新現代化器材，用以提高光達距離。
- The light was upgraded with modern equipment for better luminous range in August. |
| 47. 鹽田仔碼頭
Yim Tin Tsai Pier | - 為配合燈塔重修安排，整套航標燈系統曾經拆回工場進行檢修和調校。該燈並於8月期間換上全新太陽能系統，用以提高航標的可靠性。
- The lighting equipment had been returned to workshop for overhaul following the rehabilitation of beacon structure. The light was solarized to increase the reliability of the beacon in August. |
| 48. 鳳坑碼頭
Fung Hang Pier | - 該燈於9月期間換上全新太陽能系統，用以提高航標的可靠性。
- The light was solarized to increase the reliability of the beacon in September. |
| 49. 東心淇碼頭
Tung Sam Kei Pier | - 該燈於10月期間換上全新現代化器材，用以提高其可靠性。
- The light was replaced with modern equipment for higher reliability in October. |
| 50. 柴灣 2
Chai Wan 2 | - 為配合燈塔重修安排，整套航標燈系統曾經拆回工場進行檢修和調校。該燈並於11月期間換上全新現代化器材，用以提高航標的可靠性。
- The lighting equipment had been returned to workshop for overhaul following the rehabilitation of beacon structure. The light was then upgraded with modern equipment to increase the reliability of beacon in November. |
| 51. 油街碼頭
Oil Street Pier | - 該燈於10月期間換上全新現代化器材，用以提高光達距離。
- The light was upgraded with modern equipment for better luminous range in October. |

附錄 G - 續

APPENDIX G - Cont'd

- | | |
|------------------------------------|---|
| 52. 油柑頭碼頭
Yau Kam Tau Pier | - 該燈於10月期間換上全新現代化器材，用以提高光達距離。
- The light was upgraded with modern equipment for better luminous range in October. |
| 53. 布袋澳碼頭
Po Toi O Pier | - 該燈於10月期間換上全新太陽能系統，用以提高航標的可靠性。
- The light was solarized to increase the reliability of the beacon in October. |
| 54. 北丫碼頭
Pak A Pier | - 該燈於10月期間換上全新太陽能系統，用以提高航標的可靠性。
- The light was solarized to increase the reliability of the beacon in October. |
| 55. 濶西碼頭
Kau Sai Pier | - 該燈於10月期間換上全新太陽能系統，用以提高航標的可靠性。
- The light was solarized to increase the reliability of the beacon in October. |
| 56. 泥涌碼頭
Nai Chung Pier | - 該燈於10月期間換上全新太陽能系統，用以提高航標的可靠性。
- The light was solarized to increase the reliability of the beacon in October. |
| 57. 深涌碼頭
Sham Chung Pier | - 該燈於11月期間換上全新太陽能系統，用以提高航標的可靠性。
- The light was solarized to increase the reliability of the beacon in November. |
| 58. 企嶺下海碼頭
Kei Ling Ha Hoi Pier | - 該燈於11月期間換上全新太陽能系統，用以提高航標的可靠性。
- The light was solarized to increase the reliability of the beacon in November. |
| 59. 荔枝莊碼頭
Lai Chi Chong Pier | - 該燈於11月期間換上全新太陽能系統，用以提高航標的可靠性。
- The light was solarized to increase the reliability of the beacon in November. |
| 60. 麻南笏碼頭
Ma Nam Wat Pier | - 該燈於12月期間換上全新太陽能系統，用以提高航標的可靠性。
- The light was solarized to increase the reliability of the beacon in December. |
| 61. 海下碼頭
Hoi Ha Pier | - 該燈於12月期間換上全新太陽能系統，用以提高航標的可靠性。
- The light was solarized to increase the reliability of the beacon in December. |
| 62. 筲箕灣 B
Shau Kei Wan B | - 該燈的後備電池容量於12月期間加強，用以提高航標的可靠性。
- The capacity of standby battery was enhanced to increase the reliability of the beacon in December. |
| 63. 汾流西灣碼頭
Fan Lau Sai Wan Pier | - 該燈於12月期間換上全新現代化器材，用以提高其可靠性。
- The light was replaced with modern equipment for higher reliability in December. |
| 64. 牙鷹排
Nga Ying Pai | - 為配合燈塔重修安排，整套航標燈系統曾經拆回工場進行檢修和調校。該燈並於11月期間換上全新現代化器材，用以提高航標的可靠性。
- The lighting equipment had been returned to workshop for overhaul following the rehabilitation of beacon structure. The light was then upgraded with modern equipment to increase the reliability of beacon in November. |

III. 本年新設的輔航裝置

NEW AIDS ESTABLISHED DURING THE YEAR

- | | | |
|--|---|--|
| 1. 一尺石
One Foot Rock | - | 一個新的燈浮標於3月16日設立，用以標示一尺石的範圍。
A new lighted buoy was established to mark the boundary of One Foot Rock on 16-3-00. |
| 2. 屯門特別工業發展第38區
Tuen Mun Area 38 Special Industrial Development | - | 一個以太陽能操作的新燈標於2月15日設立，用以標示屯門特別工業發展第38區。
A solar power operated light was established to mark the Tuen Mun Area 38 Special Industrial Development on 15-2-00. |
| 3. 沙頭角碼頭
Sha Tau Kok Pier | - | 一個以太陽能操作的新燈標於3月29日設立，用以標示沙頭角碼頭。
A solar power operated light was established to mark the Sha Tau Kok Pier on 29-3-00. |
| 4. 葵青橋南紅
Kwai Tsing Bridge South Red | - | 一個新的燈標於6月1日設立，用以引導葵青橋南附近的船隻。
A new light was established to lead the vessels navigating near the Kwai Tsing Bridge South area on 1-6-00. |
| 5. 葵青橋南白
Kwai Tsing Bridge South White | - | 一個新的燈標於6月1日設立，用以引導葵青橋南附近的船隻。
A new light was established to lead the vessels navigating near the Kwai Tsing Bridge South area on 1-6-00. |
| 6. 葵青橋南綠
Kwai Tsing Bridge South Green | - | 一個新的燈標於6月1日設立，用以引導葵青橋南附近的船隻。
A new light was established to lead the vessels navigating near the Kwai Tsing Bridge South area on 1-6-00. |
| 7. 大水坑碼頭
Tai Shui Hang Pier | - | 一個以太陽能操作的新燈標於8月4日設立，用以標示大水坑碼頭。
A solar power operated light was established to mark the Tai Shui Hang Pier on 4-8-00. |
| 8. 東涌碼頭
Tung Chung Pier | - | 一個以太陽能操作的新燈標於9月15日設立，用以標示東涌碼頭。
A solar power operated light was established to mark the Tung Chung Pier on 15-9-00. |
| 9. 香港內河碼頭 2
RTT-2 | - | 一個以太陽能操作的新燈標於3月3日設立，用以標示香港內河碼頭。
A solar power operated light was established to mark the River Trade Terminal on 3-3-00. |
| 10. 香港內河碼頭 1
RTT-1 | - | 一個以太陽能操作的新燈標於3月3日設立，用以標示香港內河碼頭。
A solar power operated light was established to mark the River Trade Terminal on 3-3-00. |
| 11. 香港內河碼頭 4
RTT-4 | - | 一個以太陽能操作的新燈標於3月3日設立，用以標示香港內河碼頭。
A solar power operated light was established to mark the River Trade Terminal on 3-3-00. |
| 12. 布袋澳新碼頭
Po Toi O New Pier | - | 一個以太陽能操作的新燈標於10月13日設立，用以標示布袋澳新碼頭。
A solar power operated light was established to mark the Po Toi O New Pier on 13-10-00. |

附錄 G - 續

APPENDIX G - Cont'd

- | | |
|--|---|
| 13. 烏溪沙碼頭
Wu Kai Sha Pier | - 一個以太陽能操作的新燈標於12月14日設立，用以標示烏溪沙碼頭。
- A solar power operated light was established to mark the Wu Kai Sha Pier on 14-12-00. |
| 14. 大尾篤北碼頭
Tai Mei Tuk North Pier | - 一個以太陽能操作的新燈標於12月14日設立，用以標示大尾篤北碼頭。
- A solar power operated light was established to mark the Tai Mei Tuk North Pier on 14-12-00. |
| 15. 大尾篤南碼頭
Tai Mei Tuk South Pier | - 一個以太陽能操作的新燈標於12月20日設立，用以標示大尾篤南碼頭。
- A solar power operated light was established to mark the Tai Mei Tuk South Pier on 20-12-00. |
| 16. 碇泊泡 A-41
Mooring Buoy A-41 | - 一個以太陽能操作的新燈浮標於11月17日設立。
- A solar power operated light was established on 17-11-00. |
| 17. 碇泊泡 A-45
Mooring Buoy A-45 | - 一個以太陽能操作的新燈浮標於11月14日設立。
- A solar power operated light was established on 14-11-00. |
| 18. 碇泊泡 A-46
Mooring Buoy A-46 | - 一個以太陽能操作的新燈浮標於11月17日設立。
- A solar power operated light was established on 17-11-00. |
| 19. 黃花排(燈航標)
Wong Fa Pai (Lighted Beacon) | - 一個以太陽能操作的新燈標於11月9日設立，用以標示黃花排。
- A solar power operated light was established to mark the Wong Fa Pai on 9-11-00. |
| 20. 大排咀碼頭
Tai Pai Tsui Pier | - 一個以太陽能操作的新燈標於12月21日設立，用以標示大排咀碼頭。
- A solar power operated light was established to mark the Tai Pai Tsui Pier on 21-12-00. |

IV. 本年拆除的輔航裝置

AIDS DISCONTINUED DURING THE YEAR

- | | |
|---|---|
| 1. 沙田 1
Shatin 1 | - 這個燈浮標於6月1日永久終止服務。
- The lighted buoy was permanently withdrawn from service on 1-6-00. |
| 2. 青衣橋南紅
Tsing Yi Bridge South Red | - 這個燈航標於6月7日永久終止服務。
- The light was permanently withdrawn from service on 7-6-00. |
| 3. 青衣橋南白
Tsing Yi Bridge South White | - 這個燈航標於6月7日永久終止服務。
- The light was permanently withdrawn from service on 7-6-00. |
| 4. 青衣橋南綠
Tsing Yi Bridge South Green | - 這個燈航標於6月7日永久終止服務。
- The light was permanently withdrawn from service on 7-6-00. |
| 5. 孤立危險物燈浮標(喜靈洲避
風塘附近)
Isolated Danger Mark Buoy
(near Hei Ling Chau
Typhoon Shelter) | - 這個燈浮標於6月19日永久終止服務。
- The lighted buoy was permanently withdrawn from service on 19-6-00. |

附錄 G - 續

APPENDIX G - Cont'd

- | | |
|---|---|
| 6. 小西灣
Siu Sai Wan | - 這個燈航標於7月24日永久終止服務。
- The light was permanently withdrawn from service on 24-7-00. |
| 7. 油麻地填海區
Yaumatei Reclamation | - 這個燈航標於7月28日永久終止服務。
- The light was permanently withdrawn from service on 28-7-00. |
| 8. 孤立危險物燈浮標(青衣島以南附近)
Isolated Danger Mark Buoy (at south of Tsing Yi Island) | - 這個燈浮標於8月18日永久終止服務。
- The lighted buoy was permanently withdrawn from service on 30-8-00. |
| 9. 碇泊泡 A-49
Mooring Buoy A-49 | - 這個燈浮標於11月13日永久終止服務。
- The lighted buoy was permanently withdrawn from service on 13-11-00. |
| 10. 水泥 2
Cement 2 | - 這個燈浮標於11月20日永久終止服務。
- The lighted buoy was permanently withdrawn from service on 20-11-00. |
| 11. 水泥 4
Cement 4 | - 這個燈浮標於11月20日永久終止服務。
- The lighted buoy was permanently withdrawn from service on 20-11-00. |
| 12. 黃花排(燈浮標)
Wong Fa Pai (Lighted Buoy) | - 這個燈浮標於11月17日永久終止服務。
- The lighted buoy was permanently withdrawn from service on 17-11-00. |
| 13. 倒扣灣 1
To Kau Wan 1 | - 這個燈航標於12月21日永久終止服務。
- The lighted buoy was permanently withdrawn from service on 21-12-00. |
| 14. 倒扣灣 2
To Kau Wan 2 | - 這個燈航標於12月21日永久終止服務。
- The lighted buoy was permanently withdrawn from service on 21-12-00. |
| 15. 北青衣碼頭
North Tsing Yi Island Pier | - 這個燈航標於12月17日永久終止服務。
- The light was permanently withdrawn from service on 17-12-00. |

V. 本年遭損毀的輔航裝置

AIDS DAMAGED DURING THE YEAR

- | | |
|----------------------------|--|
| 1. 東芝麻灣
East Chi Ma Wan | - 此燈航標於2月期間遭損毀，航標燈熄滅。
- The light was reported damaged and unlit in February. |
| 2. 北航 2
Northern 2 | - 此燈浮標的航標燈於1月期間遭損毀。
- The light was reported damaged in January. |
| 3. 青衣西
Tsing Yi West | - 此燈浮標於2月期間遭損毀，航標燈熄滅。
- The light was reported damaged and unlit in February. |
| 4. 下棚
HP | - 此燈浮標於2月期間遭損毀，航標燈熄滅。
- The light was reported damaged and unlit in February. |
| 5. 奇力西
Kellett West | - 此燈浮標的航標燈於3月期間遭損毀。
- The light was reported damaged in March. |

附錄 G - 續

APPENDIX G - Cont'd

- | | |
|--|---|
| 6. 碇泊泡 A-70
Mooring Buoy A-70 | - 此燈浮標於7月期間熄滅，其後在現場發現此燈浮標的部分設備被切斷兼失去。
- The light was reported unlit and subsequently found part of the equipment sheared off and lost in July. |
| 7. 沙龍 D
SLMP D | - 此燈浮標的航標燈於9月期間遭損毀。
- The light was reported damaged in September. |
| 8. 青洲 (燈浮標)
Green Island (Lighted Buoy) | - 此燈於10月期間熄滅，其後在現場發現此燈浮標的部分設備被切斷兼失去。
- The light was reported unlit and subsequently found part of the equipment sheared off and lost in October. |
| 9. 青山 6
C P 6 | - 此燈浮標於10月期間遭損毀，航標燈熄滅。
- The light was reported damaged and unlit in October. |
| 10. 沙龍 C
SLMP C | - 此燈浮標於10月期間遭損毀，航標燈熄滅。
- The light was reported damaged and unlit in October. |
| 11. 青山 8
C P 8 | - 此燈浮標於10月期間遭損毀，航標燈熄滅。
- The light was reported damaged and unlit in October. |
| 12. 奇力西
Kellett West | - 此燈浮標的航標燈於10月期間遭損毀。
- The light was reported damaged in October. |
| 13. 奇力北
Kellett North | - 此燈於11月期間熄滅，其後在現場發現此燈浮標的部分設備被切斷兼失去。
- The light was reported unlit and subsequently found part of the equipment sheared off and lost in November. |
| 14. 黃花排(燈浮標)
Wong Fa Pai (Lighted Buoy) | - 此燈浮標於11月期間熄滅，其後在現場發現此燈浮標的部分設備被切斷兼失去。
- The light was reported unlit and subsequently found part of the equipment sheared off and lost in November. |
| 15. 青衣西
Tsing Yi West | - 此燈浮標於11月期間熄滅，其後在現場發現此燈浮標的部分設備被切斷兼失去。
- The light was reported unlit and subsequently found part of the equipment sheared off and lost in November. |
| 16. 青山 4
C P 4 | - 此燈浮標於11月期間遭損毀，航標燈熄滅。
- The light was reported damaged and unlit in November. |
| 17. 港澳 2
M F T 2 | - 此燈於11月期間遭損毀，航標燈熄滅。
- The light was reported damaged and unlit in November. |
| 18. 南丫排西南
Lamma Patch SW | - 此燈於11月期間熄滅，其後在現場發現此燈浮標的部分設備被切斷兼失去。
- The light was reported unlit and subsequently found part of the equipment sheared off and lost in November. |
| 19. 碇泊泡 A-39
Mooring Buoy A-39 | - 此燈浮標於11月期間遭損毀，航標燈熄滅。
- The light was reported damaged and unlit in November. |

附錄 G - 續

APPENDIX G - Cont'd

VI. 工場員工與輔航燈比例

RATIO OF WORKSHOP STAFF TO AIDS

年份 Year	員工 Staff	輔航燈 Aids	比例 Ratio
	(%)	(%)	
1989	31 (+10.7)	307 (-2.2)	9.9
1990	34 (+9.7)	319 (+3.9)	9.4
1991	34 (0.0)	326 (+2.2)	9.6
1992	34 (0.0)	327 (+0.3)	9.6
1993	40 (+17.6)	356 (+8.9)	8.9
1994	40 (0.0)	375 (+5.3)	9.4
1995	37 (-7.5)	379 (+1.1)	10.2
1996	36 (-2.7)	380 (+0.3)	10.6
1997	32 (-11.1)	395 (+3.9)	12.3
1998	29 (-9.4)	432 (+9.4)	14.9
1999	27 (-6.9)	463 (+7.2)	17.1
2000	27 (0.0)	468 (+1.1)	17.3