

請按此處進入目錄

Please click here for viewing the  
content page

# 統計年報

STATISTICAL TABLES

# 20海2

# 香港港口

PORT OF HONG KONG

中華人民共和國香港特別行政區海事處

Marine Department

Hong Kong Special Administrative Region

People's Republic of China

本處使命是促進卓越的海事服務

Our Mission is to Promote Excellence in Marine Services

香 港 港 口  
PORT OF HONG KONG

統 計 年 報 2002  
STATISTICAL TABLES 2002

有關本刊物的查詢，請聯絡：

海事處 策劃及發展協調部 統計組

電話：(852) 2873 8371 圖文傳真：(852) 2542 4638

電子郵遞：st-sec@mardep.gov.hk

Enquiries about this publication can be directed to：

**Statistics Section**

**Planning & Development Branch**

**Marine Department**

Tel. No. : (852) 2873 8371 Fax. No. : (852) 2542 4638

E-mail : st-sec@mardep.gov.hk

政府海事處網頁 Home Page of the Marine Department

<http://www.info.gov.hk/mardep/>

## 目錄 CONTENTS

如欲進入統計表 / 附錄，請按下有關的藍色項目

To view the statistical tables/appendices, please click  
the item in blue

頁數  
Page No.

### 註釋

### EXPLANATORY NOTES

iv - v

### 摘要

### SUMMARY

1998 至 2002 年 主要港口統計數字連同每年增長率

Principal Port Statistics for 1998 - 2002 and Annual Growth Rates

vi

### 第一部 - 港口活動

### PART I - Port Activities

#### 抵港 / 離港的船次

#### *Vessel Arrivals/Departures*

表 1 . 2002 年 按主要停泊地點分析抵港遠洋輪船的船次	
TABLE 1 . Ocean Vessel Arrivals by Main Berthing Location, 2002	1
表 2 . 2002 年 按主要停泊地點分析離港遠洋輪船的船次	
TABLE 2 . Ocean Vessel Departures by Main Berthing Location, 2002	1
表 3 . 2002 年 按船舶類型分析抵港船隻的船次	
TABLE 3 . Vessel Arrivals by Ship Type, 2002	2
表 4 . 2002 年 按船旗分析抵港船隻的船次	
TABLE 4 . Vessel Arrivals by Flag, 2002	3 - 4
表 5 . 2002 年 按船旗分析曾停靠香港的船隻數目和淨註冊噸位	
TABLE 5 . Number and NRT of Vessels Calling Hong Kong by Flag, 2002	5 - 6
表 6 . 2002 年 按船舶類型分析離港船隻的平均在港停留時間	
TABLE 6 . Average Time in Port for Vessels Departing Hong Kong by Ship Type, 2002	7
表 7 . 2002 年 經貨櫃碼頭的遠洋輪船統計資料	
TABLE 7 . Statistics on Ocean Vessels Calling Container Terminals, 2002	8
表 8 . 2002 年 按夏季吃水分析抵港遠洋輪船的船次	
TABLE 8 . Ocean Vessel Arrivals by Summer Draft, 2002	9
表 9 . 2002 年 按船隻長度分析抵港遠洋輪船的船次	
TABLE 9 . Ocean Vessel Arrivals by Vessel Length, 2002	9
表 10 . 2002 年 按主要來港原因分析抵港遠洋輪船的船次	
TABLE 10 . Ocean Vessel Arrivals by Main Reason of Call, 2002	10
表 11 . 2002 年 港澳客運碼頭和中國客運碼頭的抵港 / 離港統計資料	
TABLE 11 . Statistics on Arrivals/Departures at Macau Ferry Terminal and China Ferry Terminal, 2002	11 - 12

**旅客吞吐量**

*Passenger Throughput*

表 12 . 按客運碼頭分析旅客吞吐量	
TABLE 12 . Passenger Throughput by Ferry Terminal	13
表 13 . 2002 年 港澳客運碼頭和中國客運碼頭的抵港 / 離港旅客人次	
TABLE 13 . Passenger Arrivals/Departures at Macau Ferry Terminal and China Ferry Terminal, 2002	14 - 15

**貨櫃 / 貨物吞吐量**

*Container/Cargo Throughput*

表 14 . 2002 年 按主要貨物裝卸地點分析貨櫃吞吐量	
TABLE 14 . Container Throughput by Main Cargo Handling Location, 2002	16
表 15 . 2002 年 按貨櫃碼頭以外的主要貨物裝卸地點分析裝卸的貨櫃	
TABLE 15 . Containers Discharged/Loaded at Main Cargo Handling Locations Other than Container Terminals, 2002	17
表 16 . 2002 年 在公眾貨物裝卸區裝卸的貨物	
TABLE 16 . Cargo Loaded/Discharged at PCWAs, 2002	18

第二部 - 港口及船舶服務  
PART II - Port and Shipping Services

表 17 . 船舶安全監督統計資料	
TABLE 17 . Statistics on Ship Safety	19 - 21
表 18 . 本地船舶安全統計資料	
TABLE 18 . Statistics on Local Vessels Safety	22 - 27
表 19 . 海員發證、註冊和僱用統計資料	
TABLE 19 . Statistics on Seafarers' Certification, Registration and Employment	28 - 32
表 20 . 香港註冊船舶統計資料	
TABLE 20 . Statistics on Ships Registered in Hong Kong	33
表 21 . 政府船隊統計資料	
TABLE 21 . Statistics on Government Fleet	34 - 35
表 22 . 海港繫泊浮泡統計資料	
TABLE 22 . Statistics on Harbour Mooring Buoys	36
表 23 . 2002 年 按分布地點分析香港私用繫泡數目	
TABLE 23 . Number of Private Moorings Laid in Hong Kong by Location, 2002	37 - 38

	頁數 Page No.
表 24 . 垃圾收集、油污和檢控個案 TABLE 24 . Refuse Collection, Oil Pollution and Prosecutions	39
第三部 - 港口運作 PART III - Port Operations	
表 25 . 香港持牌船隻統計資料 TABLE 25 . Statistics on Hong Kong Licensed Vessels	40
表 26 . 2002 年 按噸位等級分析香港持牌船隻 TABLE 26 . Hong Kong Licensed Vessels by Tonnage Classification, 2002	41
表 27 . 用作裝卸貨物和海港工程的持牌船隻 (屬第 II 類持牌船隻) TABLE 27 . Licences on Cargo Working and Harbour Engineering Crafts (i.e. Class II Vessel Licences)	42
表 28 . 2002 年 對住家船隻的清除和管制 TABLE 28 . Clearance and Control of Dwelling Vessels, 2002	43
第四部 - 附錄 PART IV - Appendices	
A . 海事處組織架構圖 Marine Department Organization Chart	A1
B . 2002 年 12 月 31 日 海事處編制和實際員額 Marine Department Establishment and Strength as at 31.12.2002	A2 - A5
C . 2002 年海事處訓練課程 Training Course Conducted by Marine Department in 2002	A6 - A7
D . 2002 年 海事處訪客 Visitors to the Marine Department, 2002	A8 - A9
E . 2002 年 新訂海事法例 New Maritime Legislation, 2002	A10 - A13
F . 2002 年 在香港註冊的船舶 Ships Registered in Hong Kong, 2002	A14 - A24
G . 2002 年 終止在香港註冊的船舶 Ships De-registered in Hong Kong, 2002	A25 - A29
H . 2002 年 輔航設備 Aids to Navigation, 2002	A30 - A39

一般

1. 船隻統計數字計算至最接近的十位，而淨註冊噸位、貨物和貨櫃吞吐量是計算至最接近的千位。由於進位關係，因此本報告中所列的個別數字之和可能不等於其總數。變動百分率和比重百分率皆以未經進位的數字計出。
2. 除非另有指明，括號內的數字指與前一年同期比較的變動百分率。
3. 一些常用的字詞、簡寫如下：  
NRT = 淨註冊噸位  
TEU = 二十呎標準貨櫃單位

資料來源

4. 船隻進出口統計資料乃根據船公司或代理人向海事處申報船舶出／入口資料時所遞交的申報表編製而成。（摘要、表一至十）
5. 河運方面的貨運統計資料過去是由港口及航運局編製。由1998年開始，海運和河運貨運統計資料皆由政府統計處根據貨物艙單托運資料抽樣編製而成。（摘要）
6. 1998年以前，經由遠洋輪船在貨櫃碼頭裝運貨櫃的統計資料，由碼頭經營者直接提供，而經由遠洋輪船在其他地點裝運的貨櫃數字，則根據海事處所收到的船隻一般事項申報表編製而成。至於經由內河船隻裝運貨櫃的統計資料，則主要來自河運貨物艙單。（摘要、表十四和十五）
7. 1998年起，經由遠洋輪船在貨櫃碼頭裝運的載貨貨櫃統計資料不再為碼頭經營者所提供，而改由政府統計處根據貨物艙單編製。現時，貨櫃吞吐量統計資料，除了經遠洋輪船處理的空貨櫃數據以外，皆由政府統計處編製。（摘要、表十四和十五）
8. 1999年10月開始，有關遠洋輪船的主要貨物裝卸區和主要停泊地點，資料取自海事處船舶交通管理系統所保存的船隻活動報告。（表一至二、表七、表十四和十五）

General

1. Statistics on the number of vessel are rounded to the nearest ten, while those on net register tonnage, cargo and container throughput are rounded to the nearest thousand. Therefore, figures shown in the tables may not add up to the respective totals due to rounding. Percentage changes and percentage shares are calculated from unrounded figures.
2. Unless otherwise specified, figures in bracket are percentage changes over the same period in the preceding year.
3. Some common terms/abbreviations used are:  
NRT = Net Register Tonnage  
TEU = Twenty-foot Equivalent Unit

Data Sources

4. Vessel statistics are based on the declaration forms submitted by shipping companies/agents to Marine Department for declaring entry/exit. **(Summary Table, Tables 1 - 10)**
5. Cargo statistics in respect of river trade used to be compiled by the Hong Kong Port and Maritime Board. As from 1998, both seaborne and river cargo statistics are compiled by the Census and Statistics Department (C&SD) based on a sample of consignments on cargo manifests. **(Summary Table)**
6. Before 1998, statistics on container throughput handled by ocean vessels at Container Terminals were directly obtained from the terminal operators, while those handled at other locations were compiled based on the General Declaration Forms submitted to Marine Department. For statistics on container throughput by river vessels, they were principally based on river cargo manifests. **(Summary Table, Tables 14 and 15)**
7. As from 1998, statistics on laden containers handled by ocean vessels at Container Terminals are no longer based on the operators' returns, but compiled by C&SD based on cargo manifests instead. All container throughput statistics, except empty containers handled by ocean vessels, are now compiled by C&SD. **(Summary Table, Tables 14 and 15)**
8. Starting from October 1999, information on the main cargo handling location and main berthing location in respect of ocean vessels are extracted from the trip activity report kept in the Marine Department's Vessel Traffic Management System. **(Tables 1 - 2, 7, 14 and 15)**

## 資料定義

9. 1993年開始，遠洋輪船和內河船隻的定義已作修改。新定義是視乎其停靠港口是否在內河航限範圍內。（摘要、表一至十一、表十四和十五）
10. 根據《船舶及港口管制條例》(第313章)所訂，內河船隻是指進出香港與內河航限內的港口之間的船隻。（摘要、表一至十一、表十四和十五）
11. 船隻在進入香港水域後可能停泊多過一個停泊地點。若船隻來港的主要原因是裝卸貨物，則主要的貨物裝卸地點和主要的停泊地點均為最昂貴的地點，當中以貨櫃碼頭居首位，隨後是泊位和倉庫碼頭、公眾貨物裝卸區、浮泡和碇泊處。若船隻來港的主要原因不是裝卸貨物，主要停泊地點為停留時間最長的地點。（表一至二、表七、表十四和十五）

## 資料限制

12. 遠洋客船數字包括在內河航限以外水域行駛的遊樂船隻。但是，有些代理人並無申報這些船隻的淨註冊噸位資料給海事處，導致遠洋客船和遠洋輪船的淨註冊噸位數字在某程度上也許低於實際數字。（摘要、表一至二、表四和五）
13. 1999年以前，內河貨船統計資料包括一些在內河航限內行駛及有通知海事處的本地持牌遊樂船隻和漁船。由於這個數目微不足道，自1999年起，這些船隻類別不再納入內河船隻統計資料內。（摘要、表三至六）
14. 內河客船的抵港次數實際指船隻停泊於港澳客運碼頭和中國客運碼頭的次數。（摘要、表三至五和十一）

抵港次數與停泊次數或許不同，原因如下：

- (i) 船隻可能在同一次航程中停泊過港澳客運碼頭和中國客運碼頭；或者
- (ii) 船隻在停泊碼頭前或離開碼頭後，其航道可能未超越香港水域範圍。

策劃及發展協調部

統計組

## Data Definitions

9. Starting from 1993, ocean vessels and river vessels have been redefined according to whether or not their ports of call are beyond the river trade limits. **(Summary Table, Tables 1 - 11, 14 and 15)**
10. In accordance with the Shipping and Port Control Ordinance, Cap. 313, Laws of Hong Kong, river vessels refer to those travelling between Hong Kong and ports that are within the river trade limits. **(Summary Table, Tables 1 - 11, 14 and 15)**
11. A vessel may berth at more than one locations after entering into the Hong Kong waters boundary. If the main reason of call of the vessel is for loading/discharging cargo, both the main cargo handling location and the main berthing location will be the most costly location, with Container Terminals ranking first, followed by Berths and Wharves, Public Cargo Working Areas, Buoys and Anchorages. If the main reason of call is not for loading/discharging cargo, the main berthing location will be the one with the longest stay. **(Tables 1 - 2, 7, 14 and 15)**

## Data Limitations

12. The number of ocean passenger vessel includes pleasure vessels plying beyond the river trade limits. However, as some of them do not report NRT data to Marine Department, the NRT total for ocean passenger vessels and ocean vessels as a whole may be under-estimated to a certain extent. **(Summary Table, Tables 1 - 2, 4 and 5)**
13. Before 1999, river cargo vessel statistics included some locally licensed pleasure vessels and fishing vessels known to be plying within the river trade limits. As the number is insignificant, river vessel statistics do not include these categories of vessels as from 1999. **(Summary Table, Tables 3 - 6)**
14. The figures on arrivals of river passenger vessels in fact refer to the number of berthings at the Macau Ferry Terminal and the China Ferry Terminal. **(Summary Table, Tables 3 - 5 and 11)**

The number of berthings may differ from the number of arrivals because:

- (i) a ship may berth at both the Macau Ferry Terminal and the China Ferry Terminal in a single trip; or
- (ii) a ship may not have crossed the Hong Kong waters boundary right before or after a berthing.

Statistics Section,

Planning and Development Branch

## 摘要

## SUMMARY

1998 至 2002年 主要港口統計數字連同每年增長率  
Principal Port Statistics for 1998 - 2002 and Annual Growth Rates

項目 Item	1998	1999	2000	2001	2002	每年增長率 Annual Growth Rates	
						2001-2002	1997-2002 (Average)
1. 抵港、離港船次 Number of Vessel Arrivals and Departures	462 640	425 710	433 300	429 640	437 020	+1.7%	-1.3%
(a) 遠洋輪船 Ocean Vessel	83 610	75 260	74 830	74 280	70 530	-5.0%	-4.5%
貨船 - 抵港 Cargo Vessel - Arrivals	38 540	35 140	34 900	34 650	32 830	-5.2%	-4.6%
- 離港 - Departures	38 750	35 170	34 340	34 180	32 110	-6.0%	-5.0%
客船 - 抵港 Passenger Vessel - Arrivals	3 150	2 430	2 780	2 700	2 790	+3.1%	-1.6%
- 離港 - Departures	3 170	2 510	2 810	2 750	2 790	+1.7%	-1.7%
(b) 內河船隻 River Vessel	379 020	350 460	358 470	355 360	366 490	+3.1%	-0.6%
貨船 - 抵港 Cargo Vessel - Arrivals	124 610	115 330	119 180	116 190	119 520	+2.9%	-0.5%
- 離港 - Departures	124 410	115 270	119 610	116 730	120 280	+3.0%	-0.4%
客船 - 抵港 Passenger Vessel - Arrivals	65 000	59 930	59 810	61 200	63 340	+3.5%	-0.9%
- 離港 - Departures	65 000	59 930	59 880	61 240	63 340	+3.4%	-0.9%
2. 抵港、離港船隻的淨註冊噸位 (千公噸) N.R.T. of Vessel Arrivals and Departures ('000 tonnes)	523 245	534 674	601 128	680 190	744 989	+9.5%	+8.3%
(a) 遠洋輪船 Ocean Vessel	416 223	430 630	484 675	547 226	583 616	+6.6%	+8.0%
(b) 內河船隻 River Vessel	107 023	104 044	116 453	132 964	161 373	+21.4%	+9.4%
3. 貨櫃吞吐量 (千個標準貨櫃單位) Container Throughput ('000 TEUs)	14 582	16 211	18 098	17 826	19 144	+7.4%	+5.9%
(a) 貨櫃碼頭 Container Terminals	9 555	10 295	11 603	11 285	11 892	+5.4%	+4.5%
(b) 貨櫃碼頭以外 Other than Container Terminals							
遠洋 Ocean	2 641	2 838	3 033	3 011	3 326	+10.5%	+2.8%
內河 River	2 386	3 077	3 462	3 531	3 926	+11.2%	+15.4%
4. 貨物吞吐量 (千公噸) Cargo Throughput ('000 tonnes)	167 170	168 838	174 643	178 210	192 510	+8.0%	+2.6%
(a) 海運 Seaborne	127 482	128 222	130 937	130 676	138 301	+5.8%	+0.7%
(b) 河運 River	39 688	40 616	43 706	47 534	54 210	+14.0%	+8.6%
5. 遠洋船所裝卸的煤和石油產品 (千公噸) Coal and Petroleum Products Loaded and Discharged by Ocean Vessels ('000 tonnes)	28 861	23 837	19 540	21 186	22 159	+4.6%	-4.0%



表 1  
TABLE 1

2002 年 按主要停泊地點分析抵港遠洋輪船的船次  
Ocean Vessel Arrivals by Main Berthing Location, 2002

主要停泊地點 Main Berthing Location	主要船隻類別 Main Category								總計 Total			
	貨船 Cargo Vessels				客船 Passenger Vessels							
	抵港船次 No. of Vessel Arrivals		淨註冊噸位 (千公噸) NRT ('000)		抵港船次 No. of Vessel Arrivals		淨註冊噸位 (千公噸) NRT ('000)		抵港船次 No. of Vessel Arrivals		淨註冊噸位 (千公噸) NRT ('000)	
	%		%		%		%		%		%	
貨櫃碼頭 Container Terminals	9 710	(-7.8)	163 420	(+1.2)	-	-	-	-	9 710	(-7.8)	163 420	(+1.2)
碇泊處 Anchorages	13 710	(-7.6)	80 624	(+25.2)	90	(-57.7)	25	(-83.1)	13 810	(-8.3)	80 649	(+24.9)
浮泡 Buoys	1 490	(-33.9)	7 165	(-30.9)	1 400	(-2.7)	6 083	(-6.7)	2 890	(-21.7)	13 248	(-21.6)
泊位和倉庫碼頭 Berths and Wharves	7 930	(+12.7)	16 216	(+29.4)	1 290	(+24.1)	21 752	(+10.0)	9 220	(+14.2)	37 968	(+17.6)
總計 Total	32 830	(-5.2)	267 425	(+7.5)	2 790	(+3.1)	27 860	(+5.4)	35 620	(-4.6)	295 285	(+7.3)

表 2  
TABLE 2

2002 年 按主要停泊地點分析離港遠洋輪船的船次  
Ocean Vessel Departures by Main Berthing Location, 2002

主要停泊地點 Main Berthing Location	主要船隻類別 Main Category								總計 Total			
	貨船 Cargo Vessels				客船 Passenger Vessels							
	離港船次 No. of Vessel Departures		淨註冊噸位 (千公噸) NRT ('000)		離港船次 No. of Vessel Departures		淨註冊噸位 (千公噸) NRT ('000)		離港船次 No. of Vessel Departures		淨註冊噸位 (千公噸) NRT ('000)	
	%		%		%		%		%		%	
貨櫃碼頭 Container Terminals	9 650	(-7.6)	166 372	(+2.6)	-	-	-	-	9 650	(-7.6)	166 372	(+2.6)
碇泊處 Anchorages	14 530	(+1.4)	72 831	(+19.0)	110	(-60.2)	17	(-88.8)	14 640	(+0.2)	72 848	(+18.7)
浮泡 Buoys	1 430	(-34.7)	7 001	(-31.8)	1 400	(-2.9)	6 079	(-6.9)	2 830	(-22.1)	13 081	(-22.1)
泊位和倉庫碼頭 Berths and Wharves	6 510	(-9.9)	14 367	(+20.8)	1 280	(+25.6)	21 664	(+9.4)	7 790	(-5.5)	36 031	(+13.7)
總計 Total	32 110	(-6.0)	260 572	(+6.1)	2 790	(+1.7)	27 760	(+4.8)	34 910	(-5.5)	288 331	(+6.0)

註釋 : ( ) % 與去年比較 - 不適用  
Notes : ( ) % Changes over the preceding year - Not Applicable

表 3  
TABLE 3

2002 年 按船舶類型分析抵港船隻的船次  
Vessel Arrivals by Ship Type, 2002

船舶類型 Ship Type	遠洋輪船 Ocean Vessels		內河船隻 River Vessels		總計 Total	
	抵港船次 No. of Vessel Arrivals	比重百分率 Percentage Share	抵港船次 No. of Vessel Arrivals	比重百分率 Percentage Share	抵港船次 No. of Vessel Arrivals	比重百分率 Percentage Share
	(%)		(%)		(%)	
化學品運載船 Chemical Carrier/Tanker	340 (+39.5)	1.0%	650 (-16.8)	0.4%	1 000 (-3.2)	0.5%
普通貨船 Conventional Cargo Vessel	6 950 (-23.1)	19.5%	49 130 (-18.4)	26.9%	56 080 (-19.0)	25.7%
郵船 / 渡輪 Cruise/Ferry	2 700 (+9.4)	7.6%	63 340 (+3.5)	34.6%	66 040 (+3.7)	30.2%
散裝乾貨船 Dry Bulk Carrier	890 (+46.6)	2.5%	370 (+69.0)	0.2%	1 260 (+52.5)	0.6%
漁船 / 魚類加工船 Fishing/Fish Processing Vessel	350 (+27.0)	1.0%	- -	-	- -	-
全槽格式貨櫃船 Fully Cellular Container Vessel	19 020 (+0.6)	53.4%	36 470 (+71.3)	19.9%	55 490 (+38.0)	25.4%
液化氣體運載船 Gas Carrier/Tanker	350 (+51.5)	1.0%	70 (+20.4)	@	420 (+45.7)	0.2%
駁船 / 躉船 / 貨艇 <sup>#</sup> Lighter/Barge/Cargo Junk <sup>#</sup>	2 270 (-3.5)	6.4%	19 230 (+0.1)	10.5%	21 500 (-0.3)	9.8%
油輪 Oil Tanker	1 380 (-16.7)	3.9%	1 480 (-10.0)	0.8%	2 870 (-13.4)	1.3%
遊樂船隻 Pleasure Vessel	90 (-61.9)	0.3%	- -	-	- -	-
滾裝船 Roll On/Roll Off	350 (-4.3)	1.0%	* (+100.0)	@	360 (-4.0)	0.2%
半貨櫃船 Semi-container Vessel	550 (+3.6)	1.5%	1 320 (-7.4)	0.7%	1 870 (-4.5)	0.9%
拖船 Tug	250 (+0.4)	0.7%	10 640 (-4.1)	5.8%	10 890 (-4.0)	5.0%
其他 Others	120 (-37.8)	0.3%	170 (-40.0)	0.1%	290 (-39.1)	0.1%
總計 Total	35 620 (-4.6)	100.0%	182 870 <sup>+</sup> (+3.1)	100.0%	218 490 <sup>+</sup> (+1.7)	100.0%

- 註釋：  
 \* 少於 5 @ 少於 0.05% - 不適用 ( ) % 與去年比較  
 # 由於大嶼山竹篙灣填海工程，在 2001 年 8 月至 2002 年 6 月期間的船次數目是包括 "駁船 / 躉船 / 貨艇" 在內河航限範圍以外地方挖取海沙。有關挖取工程已於 2002 年 6 月完成。  
 + 不包括漁船 / 魚類加工船及遊樂船隻
- Notes：  
 \* Less than 5 @ Less than 0.05% - Not Applicable ( ) % Changes over the preceding year  
 # The figures for the period from August 2001 to June 2002 have included the trip records of "Lighter/Barge/Cargo Junk" carrying out dredging of marine sand outside the river trade limits in connection with the Reclamation in Penny's Bay, Lantau Island. The dredging concerned has been completed in June 2002.  
 + Excluding Fishing/Fish Processing Vessel and Pleasure Vessel.

表 4  
TABLE 4

2002 年按船旗分析抵港船隻的船次  
Vessel Arrivals by Flag, 2002

船旗 Flag	遠洋輪船 Ocean Vessels				內河船隻 River Vessels				總計 Total			
	抵港船次 No. of Vessel Arrivals		淨註冊噸位 (千公噸) NRT ('000)		抵港船次 No. of Vessel Arrivals		淨註冊噸位 (千公噸) NRT ('000)		抵港船次 No. of Vessel Arrivals		淨註冊噸位 (千公噸) NRT ('000)	
	(%)	(%)	(%)	(%)	(%)	(%)	(%)	(%)	(%)	(%)	(%)	
安提瓜和巴布達 Antigua and Barbuda	650	(-9.1)	5 953	(-6.1)	20	(-8.3)	224	(+2.5)	670	(-9.1)	6 177	(-5.8)
巴哈馬 Bahamas	1 160	(-2.0)	8 044	(-8.3)	20	(-5.9)	151	(-11.1)	1 170	(-2.1)	8 195	(-8.4)
伯利茲 Belize	150	(-51.1)	205	(-19.2)	40	(+33.3)	42	(+96.6)	190	(-43.7)	247	(-10.2)
中國 China	9 870	(-10.9)	8 073	(-25.1)	122 350	(+2.8)	42 950	(+8.5)	132 220	(+1.7)	51 023	(+1.3)
塞浦路斯 Cyprus	710	(+4.7)	7 275	(+11.6)	40	(+2.7)	420	(+55.2)	740	(+4.6)	7 694	(+13.4)
丹麥 Denmark	260	(-26.4)	10 542	(-5.8)	10	(-28.6)	158	(+129.6)	260	(-26.5)	10 700	(-4.9)
德國 Germany F R	700	(-13.9)	13 925	(+5.3)	40	(+42.9)	992	(+161.0)	740	(-12.1)	14 917	(+9.6)
希臘 Greece	240	(-25.8)	6 060	(-14.2)	10	(+18.2)	272	(+32.5)	260	(-24.4)	6 332	(-12.9)
中國香港 Hong Kong, China	3 470	(-7.3)	34 471	(+29.8)	58 780	(+3.0)	19 548	(+10.6)	62 250	(+2.4)	54 019	(+22.1)
日本 Japan	120	(-33.3)	1 890	(-32.2)	0	(-100.0)	0	(-100.0)	120	(-33.7)	1 890	(-32.6)
大韓民國 Korea R	680	(+12.0)	4 325	(+7.9)	100	(+123.3)	260	(+277.3)	780	(+19.3)	4 585	(+12.5)
利比里亞 Liberia	1 940	(+7.4)	30 515	(+16.5)	110	(+36.4)	1 353	(+48.5)	2 050	(+8.6)	31 868	(+17.6)
馬來西亞 Malaysia	310	(+2.6)	2 507	(-14.1)	10	(-10.0)	66	(-24.7)	320	(+2.2)	2 574	(-14.4)
馬耳他 Malta	410	(-10.8)	4 230	(+8.4)	20	(-25.0)	296	(+19.4)	430	(-11.5)	4 526	(+9.0)
荷蘭 Netherlands	130	(-43.6)	3 783	(-18.6)	*	(-40.0)	39	(+51.7)	130	(-43.5)	3 822	(-18.2)
挪威 Norway	120	(+1.7)	1 295	(+19.0)	*	(0)	15	(+11.5)	120	(+1.7)	1 310	(+18.9)

表 4 - 續  
TABLE 4 - Cont'd

船旗 Flag	遠洋輪船 Ocean Vessels				內河船隻 River Vessels				總計 Total			
	抵港船次 No. of Vessel Arrivals		淨註冊噸位 (千公噸) NRT ('000)		抵港船次 No. of Vessel Arrivals		淨註冊噸位 (千公噸) NRT ('000)		抵港船次 No. of Vessel Arrivals		淨註冊噸位 (千公噸) NRT ('000)	
	(%)	(%)	(%)	(%)	(%)	(%)	(%)	(%)	(%)	(%)	(%)	
巴拿馬 Panama R	9 230	(+2.3)	92 271	(+7.5)	970	(+24.9)	5 784	(+87.9)	10 200	(+4.1)	98 055	(+10.3)
菲律賓 Philippines	130	(+3.2)	1 067	(+40.5)	10	-	81	-	140	(+8.7)	1 148	(+51.2)
俄羅斯聯邦 Russian F	180	(+12.8)	1 339	(+16.9)	10	(-61.9)	76	(-66.0)	180	(+4.0)	1 416	(+3.3)
新加坡 Singapore R	1 590	(-1.0)	16 959	(+4.1)	60	(-7.2)	680	(+59.4)	1 650	(-1.3)	17 639	(+5.5)
聖文森特和 格林納丁斯 St Vincent and Grenadines	500	(+14.7)	2 241	(+54.8)	110	(+395.5)	893	#	610	(+33.1)	3 135	(+108.0)
台灣 Taiwan	940	(-18.8)	6 988	(-15.6)	0	(0)	0	(0)	940	(-18.8)	6 988	(-15.6)
泰國 Thailand	100	(-43.5)	526	(-21.8)	*	(-85.7)	8	(-60.8)	110	(-46.5)	534	(-22.9)
英國 United Kingdom	340	(+32.9)	8 029	(+58.5)	20	(+128.6)	356	(+131.9)	360	(+35.5)	8 386	(+60.6)
美國 USA	240	(-13.2)	5 055	(-9.4)	50	(+318.2)	1 292	(+285.6)	280	(-0.4)	6 347	(+7.3)
大洋洲合眾國 US Oceania	490	(+37.3)	5 500	(+47.8)	10	(+80.0)	162	(+240.7)	500	(+37.8)	5 662	(+50.2)
其他 Others	960	(+9.0)	12 216	(+20.4)	100	(-5.8)	1 011	(+101.9)	1 060	(+7.5)	13 227	(+24.2)
總計 Total	35 620	(-4.6)	295 285	(+7.3)	182 870	(+3.1)	77 130	(+19.0)	218 490	(+1.7)	372 415	(+9.5)

註釋: \* 少於 5                      # 多於 1000%                      - 不適用                      ( ) % 與去年比較  
Notes: \* Less than 5                      # More than 1000%                      - Not Applicable                      ( ) % Changes over the preceding year

表 5  
TABLE 5

2002 年 按船旗分析曾停靠香港的船隻數目和淨註冊噸位  
Number and NRT of Vessels Calling Hong Kong by Flag, 2002

船旗 Flag	遠洋輪船 Ocean Vessels				內河船隻 River Vessels			
	船隻數目 Number of Vessels		淨註冊噸位 (千公噸) NRT ('000)		船隻數目 Number of Vessels		淨註冊噸位 (千公噸) NRT ('000)	
		(%)		(%)		(%)		(%)
安提瓜和巴布達 Antigua and Barbuda	70	(+6.5)	657	(+1.3)	10	(-7.1)	154	(+16.9)
巴哈馬 Bahamas	120	(-7.5)	1 649	(+1.2)	10	(0)	144	(-8.7)
伯利茲 Belize	30	(-42.9)	43	(-35.7)	20	(+28.6)	15	(+24.2)
中國 China	690	(-13.6)	1 097	(-16.7)	1 650	(-4.5)	852	(+9.2)
塞浦路斯 Cyprus	130	(+5.8)	1 650	(+23.8)	20	(-7.7)	247	(+24.6)
丹麥 Denmark	50	(-28.1)	1 691	(+5.1)	10	(+66.7)	158	(+180.3)
德國 Germany F R	90	(-18.7)	1 627	(-9.6)	30	(+38.9)	489	(+82.4)
希臘 Greece	60	(+1.7)	1 284	(+8.9)	10	(+11.1)	204	(+21.2)
中國香港 Hong Kong, China	250	(+17.9)	2 061	(+27.6)	680	(+6.1)	1 036	(+37.0)
日本 Japan	20	(-25.0)	266	(-21.5)	0	(-100.0)	0	(-100.0)
大韓民國 Korea R	130	(+6.7)	576	(-6.7)	50	(+125.0)	175	(+357.3)
利比里亞 Liberia	310	(+2.0)	4 593	(+6.4)	70	(+48.9)	895	(+64.2)
馬來西亞 Malaysia	80	(+19.7)	658	(+11.9)	10	(-11.1)	52	(-39.4)
馬耳他 Malta	70	(0)	1 071	(+15.5)	20	(0)	296	(+54.0)
荷蘭 Netherlands	30	(-31.1)	526	(-20.5)	*	(-40.0)	39	(+51.7)
挪威 Norway	50	(+18.2)	802	(+50.7)	*	(0)	15	(+11.5)

表 5 - 續  
TABLE 5 - Cont'd

船旗 Flag	遠洋輪船 Ocean Vessels				內河船隻 River Vessels			
	船隻數目 Number of Vessels		淨註冊噸位 (千公噸) NRT ('000)		船隻數目 Number of Vessels		淨註冊噸位 (千公噸) NRT ('000)	
	(%)	(%)	(%)	(%)				
巴拿馬 Panama R	1 120	(+1.4)	10 671	(+6.8)	240	(+23.4)	2 115	(+108.5)
菲律賓 Philippines	40	(-9.8)	243	(-22.0)	10	-	80	-
俄羅斯聯邦 Russian F	30	(-28.6)	173	(-30.0)	10	(-14.3)	59	(-10.0)
新加坡 Singapore R	210	(-8.6)	2 355	(+11.4)	40	(+21.9)	396	(+91.0)
聖文森特和格林納丁斯 St Vincent and Grenadines	70	(+1.4)	328	(+8.0)	20	(0)	76	(+55.0)
台灣 Taiwan	70	(-8.6)	770	(-9.7)	0	-	0	-
泰國 Thailand	20	(+5.3)	92	(+26.9)	*	(-66.7)	8	(-44.9)
英國 United Kingdom	70	(+12.5)	1 371	(+44.6)	20	(+150.0)	319	(+154.7)
美國 USA	30	(+14.8)	523	(+7.0)	10	(0)	184	(-13.2)
大洋洲合眾國 US Oceania	50	(+38.5)	855	(+67.9)	10	(+20.0)	110	(+132.3)
其他 Others	230	(-4.9)	2 137	(-10.0)	40	(-19.1)	401	(-4.3)
總計 Total	4 110	(-2.9)	39 773	(+6.3)	2 960	(+2.5)	8 520	(+52.1)

註釋： \* 少於 5 - 不適用 ( ) % 與去年比較  
Notes: \* Less than 5 - Not Applicable ( ) % changes over the preceding year

表 6  
TABLE 6

2002 年 按船舶類型分析離港船隻的平均在港停留時間  
Average Time in Port for Vessels Departing Hong Kong by Ship Type, 2002

船舶類型 Ship Type	遠洋輪船 Ocean Vessels	內河船隻 River Vessels	小時 Hours 總計 Total
化學品運載船 Chemical Carrier/Tanker	12	22	19
普通貨船 Conventional Cargo Vessel	73	28	33
郵船 / 渡輪 Cruise/Ferry	12	N.A.	N.A.
散裝乾貨船 Dry Bulk Carrier	68	56	65
漁船 / 魚類加工船 Fishing/Fish Processing Vessel	146	-	-
全槽格式貨櫃船 Fully Cellular Container Vessel	22	26	25
液化氣體運載船 Gas Carrier/Tanker	28	24	27
駁船 / 躉船 / 貨艇 Lighter/Barge/Cargo Junk	13	62	57
油輪 Oil Tanker	32	53	43
滾裝船 Roll On/Roll Off	9	7	9
半貨櫃船 Semi-container Vessel	29	20	23
拖船 Tug	82	50	51
其他 Others	144	79	106
總計 Total	34	35 <sup>#</sup>	35 <sup>#</sup>

註釋： N.A. 沒有數字 - 不適用

Notes: N.A. Not Available - Not Applicable

# 不包括郵船/渡輪及漁船/魚類加工船

# Excluding Cruise/Ferry and Fishing/Fish Processing Vessels

表 7  
TABLE 7

2002 年 經貨櫃碼頭的遠洋輪船統計資料  
Statistics on Ocean Vessels Calling Container Terminals, 2002

項目 Item	數目 Number	比重百分率 Percentage Share
	(%)	
抵港遠洋輪船在貨櫃碼頭處理貨櫃的船次 Ocean Vessel Arrivals with Containers handled in Container Terminals	9 540 (-7.7)	100.0%
- 按載重噸位分析 - Analysed by DWT		
少於 10 000 載重噸           Under 10 000 DWT	800 (-32.3)	8.4%
10 000 - 19 999 載重噸       10 000 - 19 999 DWT	1 840 (-14.0)	19.2%
20 000 - 29 999 載重噸       20 000 - 29 999 DWT	1 740 (-6.1)	18.2%
30 000 - 39 999 載重噸       30 000 - 39 999 DWT	960 (+1.0)	10.0%
40 000 載重噸及以上       40 000 DWT and above	4 210 (-0.2)	44.1%
- 按主要貿易地區 / 國家分析 (根據所申報的上一個停靠港口) - Analysed by Principal Trading Region / Country (Based on Reported Previous Port)		
非洲                           Africa	10 (+11.1)	0.1%
澳洲、新西蘭               Australia and New Zealand	70 (-28.7)	0.8%
中美洲、南美洲           Central and South America	70 (+85.0)	0.8%
中國                         China	1 880 (-2.1)	19.7%
日本                         Japan	830 (-7.6)	8.6%
中東                         Middle East	70 (+97.1)	0.7%
北美洲                     North America	700 (+29.8)	7.4%
東南亞                     South East Asia	2 890 (-10.0)	30.2%
台灣                         Taiwan	2 690 (-18.2)	28.2%
西歐                         Western Europe	260 (+25.7)	2.7%
其他                         Others	80 (-17.2)	0.9%
- 平均在港停留時間 (小時) - Average Time in Port (hours)	14	

註釋： ( ) % 與去年比較  
Note: ( ) % Changes over the preceding year



表 8  
TABLE 8

2002 年 按夏季吃水分析抵港遠洋輪船的船次  
Ocean Vessel Arrivals by Summer Draft, 2002

夏季吃水 (米) Summer Draft (m)	抵港船次 No. of Vessel Arrivals	比重百分率 Percentage Share
	(%)	
少於 2.00 Under 2.00	450 (-27.7)	1.3%
2.00 - 3.99	5 940 (-12.4)	16.7%
4.00 - 5.99	5 730 (-3.4)	16.1%
6.00 - 7.99	4 920 (-10.8)	13.8%
8.00 - 9.99	7 330 (-8.0)	20.6%
10.00 - 11.99	5 010 (+6.1)	14.1%
12.00 - 13.99	2 800 (-2.0)	7.8%
14.00 - 15.99	2 110 (+17.7)	5.9%
16.00 - 17.99	880 (+9.0)	2.5%
18.00 及以上 18.00 and above	450 (+28.3)	1.3%
總計 Total	35 620 (-4.6)	100.0%

表 9  
TABLE 9

2002 年 按船隻長度分析抵港遠洋輪船的船次  
Ocean Vessel Arrivals by Vessel Length, 2002

船隻長度 (米) Vessel Length (m)	抵港船次 No. of Vessel Arrivals	比重百分率 Percentage Share
	(%)	
少於 50.0 Under 50.0	3 710 (-20.2)	10.4%
50.0 - 99.9	8 500 (-8.2)	23.9%
100.0 - 149.9	7 620 (-3.9)	21.4%
150.0 - 199.9	9 200 (-0.7)	25.8%
200.0 - 249.9	2 280 (-2.6)	6.4%
250.0 - 299.9	3 740 (+4.4)	10.5%
300.0 - 349.9	570 (+74.2)	1.6%
總計 Total	35 620 (-4.6)	100.0%

註釋： ( ) % 與去年比較

Note: ( ) % Changes over the preceding year

表 10  
TABLE 10

2002 年 按主要來港原因分析抵港遠洋輪船的船次  
Ocean Vessel Arrivals by Main Reason of Call, 2002

主要來港原因 Main Reason of Call	抵港船次 No. of Vessel Arrivals		比重百分率 Percentage Share
		(%)	
補充燃料 Bunkers	70	(-22.5)	0.2%
人事轉動 (乘客、船員等) Change of Personnel (Passengers, Crew, etc.)	2 710	(+8.3)	7.6%
卸貨 Discharging Cargo	4 480	(-1.8)	12.6%
緊急修理、非例行入乾塢 Emergency Repair, Non-routine Dry Docking	30	(-20.5)	0.1%
裝貨、卸貨 Loading and Discharging Cargo	20 790	(-2.4)	58.4%
裝貨 Loading Cargo	2 380	(-41.2)	6.7%
例行入乾塢 Routine Dry Docking	*	(-42.9)	@
交換文件 Switch Documents	1 670	(+30.1)	4.7%
船上用品補給 (燃料除外) Taking Stores (Except Bunkers)	150	(-32.3)	0.4%
其他 Others	3 330	(+1.2)	9.4%
總計 Total	35 620	(-4.6)	100.0%

註釋： \* 少於 5                      @ 少於 0.05%                      ( ) % 與去年比較  
Notes: \* Less than 5                      @ Less than 0.05%                      ( ) % Changes over the preceding year

表 11  
TABLE 11

2002 年 港澳客運碼頭和中國客運碼頭的抵港 / 離港統計資料  
Statistics on Arrivals/Departures at Macau Ferry Terminal and China Ferry Terminal, 2002

來往 From/To	服務種類 Type of Service	提供服務的 船隻 / 直升機數目 No. of Vessels/ Helicopters in Service	抵港統計資料 Statistics on Arrivals				離港統計資料 Statistics on Departures			
			航次 No. of Trips		淨註冊噸位 (千公噸) NRT (‘000)		航次 No. of Trips		淨註冊噸位 (千公噸) NRT (‘000)	
澳門 Macau	雙體船 Catamaran	22 (+15.8)	17 080 (+4.8)	3 192 (+7.1)	17 080 (+4.7)	3 191 (+7.1)				
	噴射飛翼船 Jetfoil	16 (+6.7)	18 390 (+2.5)	1 799 (+1.0)	18 390 (+2.4)	1 799 (+1.0)				
	直升機 Helicopter	5 (+25.0)	8 940 (-2.4)	- -	8 940 (-2.4)	- -				
小計 - 澳門 Sub-total - Macau			44 420 (+2.3)	4 991 (+4.9)	44 410 (+2.3)	4 990 (+4.8)				
澳頭 Aotou	雙體船 Catamaran	0 (0)	0 (0)	0 (0)	0 (0)	0 (0)				
汕頭 Shantou	大船 Conventional Ferry	0 (0)	0 (0)	0 (0)	0 (0)	0 (0)				
廈門 Xiamen	大船 Conventional Ferry	2 (+100.0)	110 #	748 #	110 #	748 #				
小計 - 中國沿岸港口 Sub-total - Mainland Coastal Ports			110 #	748 #	110 #	748 #				
公海 Open Sea	大船 Conventional Ferry	2 (+100.0)	440 (+31.7)	1 685 (+40.9)	440 (+31.7)	1 685 (+40.9)				
小計 - 公海 Sub-total - Open Sea			440 (+31.7)	1 685 (+40.9)	440 (+31.7)	1 685 (+40.9)				
斗門 Doumen	雙體船 Catamaran	1 (-66.7)	230 (-19.5)	21 (-19.7)	230 (-19.2)	21 (-19.2)				
高明 Gaoming	雙體船 Catamaran	3 (-40.0)	730 (+9.8)	121 (+9.8)	730 (+9.2)	121 (+9.2)				
公益 Gongyi	雙體船 Catamaran	0 (-100.0)	0 (-100.0)	0 (-100.0)	0 (-100.0)	0 (-100.0)				
廣州 Guangzhou	雙體船 Catamaran	6 (+20.0)	730 (+0.7)	114 (+0.7)	730 (+0.4)	114 (+0.5)				
	直升機 Helicopter	1 -	0 (0)	- -	* -	- -				
鶴山 Heshan	雙體船 Catamaran	1 (-50.0)	110 (+26.5)	16 (+25.8)	110 (+29.3)	17 (+28.6)				
虎門 <sup>+</sup> Humen <sup>+</sup>	雙體船 Catamaran	6 (+100.0)	1 080 (-3.3)	167 (-3.2)	1 080 (-3.2)	166 (-3.0)				
江門 Jiangmen	雙體船 Catamaran	6 (-14.3)	1 460 (-2.0)	186 (-2.4)	1 460 (-2.0)	186 (-2.4)				

表 11 - 續  
TABLE 11 - Cont'd

來往 From/To	服務種類 Type of Service	抵港統計資料 Statistics on Arrivals				離港統計資料 Statistics on Departures					
		提供服務的 船隻 / 直升機數目 No. of Vessels/ Helicopters in Service		航次 No. of Trips		淨註冊噸位 (千公噸) NRT (‘000)		航次 No. of Trips		淨註冊噸位 (千公噸) NRT (‘000)	
		(%)		(%)		(%)		(%)		(%)	
蓮花山 Lianhuashan	雙體船 Catamaran	9	(+28.6)	1 110	(-1.9)	192	(-1.9)	1 110	(-1.6)	192	(-1.7)
南沙 Nansha	雙體船 Catamaran	5	(0)	2 420	(-2.3)	456	(-1.8)	2 420	(-2.3)	456	(-1.8)
平州 Pingzhou	雙體船 Catamaran	6	(+20.0)	770	(-6.2)	124	(-8.9)	770	(-6.1)	124	(-8.7)
三埠 Sanbu	雙體船 Catamaran	3	(+50.0)	400	(+0.8)	65	(+5.6)	390	(-0.3)	65	(+4.6)
蛇口 Shekou	雙體船 Catamaran	5	(-28.6)	4 710	(+3.0)	713	(+2.3)	4 710	(+3.6)	714	(+2.7)
	大船 Conventional Ferry	1	-	20	-	135	-	20	-	135	-
深圳 Shenzhen	雙體船 Catamaran	12	(0)	3 210	(+10.7)	578	(+6.4)	3 210	(+10.9)	579	(+6.7)
	直升機 Helicopter	3	-	70	-	-	-	70	-	-	-
順德 Shunde	雙體船 Catamaran	3	(-25.0)	1 570	(+0.3)	268	(§)	1 570	(+0.3)	267	(§)
新會 Xinhui	雙體船 Catamaran	3	(-25.0)	350	(-44.7)	54	(-45.2)	350	(-44.5)	55	(-44.9)
新塘 Xintang	雙體船 Catamaran	1	(0)	290	(+32.3)	44	(+32.3)	290	(+32.6)	44	(+32.6)
肇慶 Zhaoqing	雙體船 Catamaran	3	(-25.0)	370	(-1.6)	71	(-0.5)	370	(-1.6)	71	(-0.5)
中山 Zhongshan	雙體船 Catamaran	6	(-33.3)	3 390	(+19.4)	575	(+21.5)	3 380	(+17.8)	575	(+19.9)
珠海 Zhuhai	雙體船 Catamaran	11	(+22.2)	4 950	(+6.2)	809	(+6.9)	4 950	(+5.7)	809	(+6.6)
小計 - 內河港口 Sub-total - River Trade Ports				27 940	(+3.7)	4 710	(+6.4)	27 940	(+3.6)	4 710	(+6.3)
總計 Total				72 910	(+3.1)	12 133	(+16.5)	72 900	(+3.0)	12 133	(+16.5)

註釋： \* 少於 5

Notes : \* Less than 5

( ) % 與去年比較

( ) % Changes over the preceding year

+ 往來太平的客輪航線已於二零零二年十二月改名為東莞(虎門)。

+ The Passenger ferry route to/from Taiping has been renamed as Dongguan (Humen) with effect from December, 2002.

§ 在±0.05%之內

§ Within ±0.05%

- 不適用

- Not Applicable

# 多於 1000%

# More than 1000%

表 12  
TABLE 12

按客運碼頭分析旅客吞吐量  
Passenger Throughput by Ferry Terminal

	旅客人次 (千位數) Passengers ('000)		
	2001	2002	(%)
中國客運碼頭 註釋(一) China Ferry Terminal (Note 1)			
澳門 Macau	2 798	2 974	(+6.3)
內地 Mainland	5 078	5 539	(+9.1)
公海 Open Sea	122	175	(+43.4)
小計 Sub-total	7 998	8 689	(+8.6)
港澳客運碼頭 註釋(一) Macau Ferry Terminal (Note 1)			
澳門 註釋(二) Macau (Note 2)	8 436	8 594	(+1.9)
內地 Mainland	1 257	1 488	(+18.3)
小計 Sub-total	9 693	10 081	(+4.0)
總計 Total	17 692	18 770	(+6.1)

( ) % 與去年比較

( ) % Changes over the preceding year

註釋：(一) 上述的中國客運碼頭和港澳客運碼頭旅客吞吐量數字源自海事處，可能與入境事務處的統計數字並不符合，原因在於：

- (i) 有些人乘船毋須付船費 [例如不足一歲]，海事處並沒有把這類旅客納入統計之內，
- (ii) 入境事務處有關中國客運碼頭旅客吞吐量數字已包括在海運碼頭所錄得以公海為目的地的旅客吞吐量。

(二) 乘搭直升機來往澳門旅客人次計算在內 (99 963 人次)。

Notes : 1. The above passenger throughput figures for China Ferry Terminal and Macau Ferry Terminal originate from the Marine Department and may not tally with the Immigration Department's statistics because:

- (i) some persons travelling on board may not be required to pay fares (e.g. those less than 1 year of age) and these are not covered by the Marine Department's statistics,
- (ii) Immigration Department's statistics for China Ferry Terminal has included Ocean Terminal's passenger throughput for cruises to high seas.

2. The helicopter passengers (99 963) to and from Macau have been included.

資料來源：客運碼頭組

Data Source: Ferry Terminals Section

表 13  
TABLE 13

2002 年 港澳客運碼頭和中國客運碼頭的抵港 / 離港旅客人次  
Passenger Arrivals/Departures at Macau Ferry Terminal and China Ferry Terminal, 2002

來往 From/To	服務種類 Type of Service	抵港旅客 Passenger Arrivals				離港旅客 Passenger Departures			
		旅客人次 (千位數) Passengers (‘000)		載客率 Passenger Load Factor		旅客人次 (千位數) Passengers (‘000)		載客率 Passenger Load Factor	
			(%)	(%)		(%)	(%)	(%)	(%)
澳門 Macau	雙體船 Catamaran	2 330	(-5.6)	37.7%	(-11.3)	3 310	(+8.8)	53.6%	(+2.4)
	噴射飛翼船 Jetfoil	2 891	(+1.9)	64.8%	(+3.2)	2 936	(+5.7)	65.8%	(+7.0)
	直升機 Helicopter	45	(-9.1)	41.7%	(-6.8)	55	(-5.2)	51.5%	(-2.8)
小計 - 澳門 Sub-total - Macau		5 266	(-1.7)	49.0%	(-4.5)	6 302	(+7.2)	58.6%	(+4.2)
澳頭 Aotou	雙體船 Catamaran	0	-	-	-	0	-	-	-
汕頭 Shantou	大船 Conventional Ferry	0	-	-	-	0	-	-	-
廈門 Xiamen	大船 Conventional Ferry	15	#	10.9%	(-19.0)	14	#	10.1%	(-34.1)
小計 - 中國沿岸港口 Sub-total - Mainland Coastal Ports		15	#	10.9%	(-19.0)	14	#	10.1%	(-34.1)
公海 Open Sea	大船 Conventional Ferry	88	(+43.4)	18.7%	(+7.2)	88	(+43.3)	18.7%	(+7.2)
小計 - 公海 Sub-total - Open Sea		88	(+43.4)	18.7%	(+7.2)	88	(+43.3)	18.7%	(+7.2)
斗門 Doumen	雙體船 Catamaran	26	(+13.5)	45.9%	(+41.0)	28	(+5.1)	49.0%	(+30.0)
高明 Gaoming	雙體船 Catamaran	73	(+13.7)	31.1%	(+4.0)	77	(+13.3)	33.0%	(+4.2)
公益 Gongyi	雙體船 Catamaran	0	(-100.0)	-	-	0	(-100.0)	-	-
廣州 Guangzhou	雙體船 Catamaran	61	(+40.8)	31.2%	(+39.7)	59	(+39.3)	30.5%	(+38.7)
	直升機 Helicopter	0	-	-	-	**	-	8.3%	-
鶴山 Heshan	雙體船 Catamaran	21	(+61.2)	67.1%	(+28.2)	23	(+70.8)	72.7%	(+32.9)
虎門 + Humén +	雙體船 Catamaran	103	(+17.4)	32.9%	(+21.1)	83	(-3.0)	26.4%	(S)
江門 Jiangmen	雙體船 Catamaran	163	(+24.7)	35.7%	(+26.0)	159	(+16.9)	34.9%	(+18.1)

表 13 - 續  
TABLE 13 - Cont'd

來往 From/To	服務種類 Type of Service	抵港旅客 Passenger Arrivals				離港旅客 Passenger Departures			
		旅客人次 (千位數) Passengers (‘000)		載客率 Passenger Load Factor		旅客人次 (千位數) Passengers (‘000)		載客率 Passenger Load Factor	
		(%)	(%)	(%)	(%)	(%)	(%)	(%)	(%)
蓮花山 Lianhuashan	雙體船 Catamaran	134	(+6.8)	34.1%	(+8.9)	135	(-2.6)	34.3%	(-0.9)
南沙 Nansha	雙體船 Catamaran	448	(+1.4)	49.3%	(+3.5)	426	(-3.7)	46.8%	(-1.7)
平州 Pingzhou	雙體船 Catamaran	121	(-16.1)	46.8%	(-10.4)	79	(-11.8)	30.5%	(-6.0)
三埠 Sanbu	雙體船 Catamaran	62	(+17.9)	44.7%	(+13.8)	61	(+13.5)	44.2%	(+10.6)
蛇口 Shekou	雙體船 Catamaran	418	(+11.7)	28.6%	(+9.8)	385	(+16.3)	26.3%	(+13.9)
	大船 Conventional Ferry	2	-	12.4%	-	2	-	11.4%	-
深圳 Shenzhen	雙體船 Catamaran	320	(+25.3)	34.3%	(+15.9)	337	(+16.8)	36.1%	(+7.8)
	直升機 Helicopter	**	-	4.2%	-	**	-	5.4%	-
順德 Shunde	雙體船 Catamaran	325	(+7.3)	59.5%	(+6.7)	276	(+4.3)	50.7%	(+3.7)
新會 Xinhui	雙體船 Catamaran	44	(-6.0)	39.8%	(+71.1)	51	(+0.7)	45.6%	(+82.4)
新塘 Xintang	雙體船 Catamaran	20	(+1.2)	25.1%	(-23.5)	20	(+0.7)	25.9%	(-24.1)
肇慶 Zhaoqing	雙體船 Catamaran	50	(+7.7)	38.7%	(+9.6)	56	(+6.8)	43.0%	(+8.7)
中山 Zhongshan	雙體船 Catamaran	495	(+22.8)	41.0%	(+2.3)	498	(+17.5)	41.3%	(-0.8)
珠海 Zhuhai	雙體船 Catamaran	683	(+12.3)	40.3%	(+6.0)	667	(+8.0)	39.3%	(+2.3)
小計 - 內河港口 Sub-total - River Trade Ports		3 571	(+12.1)	38.9%	(+8.5)	3 422	(+8.8)	37.3%	(+5.4)
總計 Total		8 940	(+3.9)	43.6%	(-0.4)	9 826	(+8.1)	47.9%	(+3.7)

註釋： \*\* 少於 500 # 多於 1000% - 不適用 § 在 ± 0.05% 之內  
Notes: \*\* Less than 500 # More than 1000% - Not Applicable § within ± 0.05%

( ) % 與去年比較  
( ) % Changes over the preceding year

+ 往來太平的客輪航線已於二零零二年十二月改名東莞(虎門)。  
+ The Passenger ferry route to/from Taiping has been renamed as Dongguan (Humen) with effect from December 2002.

表 14

TABLE 14

2002年 按主要貨物裝卸地點分析貨櫃吞吐量  
Container Throughput by Main Cargo Handling Location, 2002

千個標準貨櫃單位  
'000 T.E.U.s

類別 Category	貨櫃碼頭 Container Terminals			貨櫃碼頭以外 Other than Container Terminals			總計 Total
	遠洋 Ocean	內河 River	小計 Sub-total	遠洋 Ocean	內河 River	小計 Sub-total	
離港 OUTWARD	(%)	(%)	(%)	(%)	(%)	(%)	(%)
載貨貨櫃 Laden Container	5 354 (+3.4)	479 (+15.1)	5 833 (+4.3)	1 431 (+20.7)	1 137 (+4.5)	2 568 (+13.0)	8 400 (+6.8)
空貨櫃 Empty Container	236 (+5.4)	117 (+25.1)	353 (+11.2)	120 (-23.4)	779 (+18.9)	899 (+10.7)	1 252 (+10.8)
小計 SUB-TOTAL	5 589 (+3.5)	597 (+17.0)	6 186 (+4.7)	1 551 (+15.6)	1 916 (+9.9)	3 466 (+12.4)	9 652 (+7.3)
抵港 INWARD							
載貨貨櫃 Laden Container	3 455 (+5.3)	641 (+23.4)	4 096 (+7.7)	1 672 (+8.8)	1 153 (+16.9)	2 825 (+12.0)	6 921 (+9.4)
空貨櫃 Empty Container	1 539 (+4.5)	71 (-30.6)	1 610 (+2.2)	103 (-21.8)	858 (+7.0)	961 (+2.9)	2 571 (+2.5)
小計 SUB-TOTAL	4 994 (+5.0)	711 (+14.5)	5 706 (+6.1)	1 775 (+6.4)	2 011 (+12.5)	3 786 (+9.5)	9 492 (+7.5)
合計 OVERALL							
載貨貨櫃 Laden Container	8 809 (+4.2)	1 120 (+19.7)	9 929 (+5.7)	3 103 (+14.0)	2 290 (+10.4)	5 393 (+12.5)	15 322 (+8.0)
空貨櫃 Empty Container	1 775 (+4.6)	188 (-3.9)	1 963 (+3.7)	223 (-22.7)	1 637 (+12.3)	1 860 (+6.5)	3 822 (+5.1)
總計 TOTAL	10 584 (+4.2)	1 308 (+15.6)	11 892 (+5.4)	3 326 (+10.5)	3 926 (+11.2)	7 252 (+10.9%)	19 144 (+7.4)

註釋： ( ) % 與去年比較  
Note : ( ) % Changes over the preceding year



表 15  
TABLE 15

2002 年 按貨櫃碼頭以外的主要貨物裝卸地點分析裝卸的貨櫃  
Containers Discharged/Loaded at Main Cargo Handling Locations Other than Container Terminals, 2002

千個標準貨櫃單位  
'000 T.E.U.s

主要貨物裝卸地點 (貨櫃碼頭以外) Main Cargo Handling Location (Other than Container Terminals)	遠洋 Ocean				內河 River				總計 Total		
	卸下 Discharged		裝上 Loaded		卸下 Discharged		裝上 Loaded				
	載貨貨櫃 Laden	空貨櫃 Empty	載貨貨櫃 Laden	空貨櫃 Empty	載貨貨櫃 Laden	空貨櫃 Empty	載貨貨櫃 Laden	空貨櫃 Empty	載貨貨櫃 Laden	空貨櫃 Empty	
	(%)	(%)	(%)	(%)	(%)	(%)	(%)	(%)	(%)	(%)	(%)
碇泊處 Anchorage	1 099 (+1.6)	76 (-15.6)	966 (+18.6)	82 (-23.2)	72 (+27.4)	16 (-15.5)	198 (+90.7)	82 (+126.2)	2 335 (+13.5)	256 (+1.5)	
浮泡 Buoys	238 (-35.2)	6 (-68.3)	178 (-27.5)	7 (-79.6)	77 (+61.3)	72 (+88.5)	102 (-1.3)	31 (-1.6)	595 (-22.1)	116 (-5.2)	
泊位和倉庫碼頭 Berths and Wharves	335 (+282.8)	21 (-3.8)	288 (+129.0)	31 (+84.9)	1 003 (+13.9)	770 (+3.3)	837 (-4.9)	666 (+13.4)	2 463 (+24.7)	1 487 (+8.5)	
總計 Total	1 672 (+8.8)	103 (-21.8)	1 431 (+20.7)	120 (-23.4)	1 153 (+16.9)	858 (+7.0)	1 137 (+4.5)	779 (+18.9)	5 393 (+12.5)	1 860 (+6.5)	

註釋： ( ) % 與去年比較  
Note : ( ) % Changes over the preceding year

表 16  
TABLE 16

2002 年 在公眾貨物裝卸區裝卸的貨物  
Cargo Loaded/Discharged at PCWAs, 2002

公眾貨物裝卸地區 PCWA Location	可用海旁沿 岸長度(米) Usable Seafrontage (Metres)	裝貨重量 (公噸) Cargo Loaded (Tonnes)				卸貨重量 (公噸) Cargo Discharged (Tonnes)				總貨重量 (公噸) Total Cargo (Tonnes)	貨物吞吐量年率 (以每米海旁 沿岸計算的噸數) Throughput Rate (Tonnes Per Metre of Seafrontage)
		中國 China	澳門 Macau	其他 Others	小計 Sub-total	中國 China	澳門 Macau	其他 Others	小計 Sub-total		
昂船洲 Stonecutters Island	691	418 207	76 793	183 547	678 547	331 260	59 415	115 898	506 573	1 185 120	1 715.08
藍巴勒海峽 Rambler Channel	1 036	406 539	301 469	1 059 551	1 767 559	91 234	150 735	154 701	396 670	2 164 229	2 089.02
屯門 Tuen Mun	622	404 619	0	695 989	1 100 609	246 999	0	372 507	619 506	1 720 115	2 765.46
新油麻地 New Yaumatei	1 215	466 531	142 301	1 011 251	1 620 083	508 067	246 586	810 567	1 565 220	3 185 303	2 621.65
觀塘 Kwun Tong	912	72 790	3 585	679 336	755 711	46 380	14 082	460 978	521 441	1 277 151	1 400.39
茶果嶺 Cha Kwo Ling	938	342 203	51 235	395 031	788 470	302 468	21 946	479 900	804 314	1 592 784	1 698.06
灣仔 Wan Chai	800	35 530	0	116 974	152 504	16 945	0	49 195	66 140	218 644	273.30
西環 Western District	1 554	70 626	26 613	127 946	225 184	47 084	72 673	64 485	184 242	409 426	263.47
總計 TOTAL	7 768	2 217 045	601 995	4 269 626	7 088 667	1 590 438	565 437	2 508 230	4 664 106	11 752 773	1 512.97

表 17  
TABLE 17

船舶安全監督統計資料  
Statistics on Ship Safety

A. 貨船安全統計數字 Cargo Ships Safety Statistics	<u>2001</u>	<u>2002</u>
I. 註冊貨船數目 No. of Cargo Ships in the Register		
a. 所管理公約貨船數目 (截至年底) No. of convention cargo ships under the Register (as at year end)	433	547
b. 所管理公約貨船總噸位 (截至年底) Gross register tonnage of convention cargo ships under the Register (as at year end)	13 622 501	16 127 577
c. 新申請在香港註冊公約貨船數目 No. of convention cargo ships newly registered	131	161
d. 新申請在香港註冊公約貨船總噸位 Gross register tonnage of convention cargo ships newly registered	4 203 787	4 082 276
II. 海事處註冊貨船品質審查 / 檢驗數目 No. of Hong Kong registered cargo ships quality checked/inspected		
a. 品質審查的註冊貨船數目 Quality checks on Hong Kong registered cargo ships	164	205
b. 品質檢驗和稽核貨船數目 No. of Flag State Quality Control ship inspections and company visits	37	45
c. 審核船體、機械和設備圖則數目 No. of plans examined in respect of hull, machinery and equipment	700	973
III. 貨船設備安全證明書 Cargo Ship Safety Equipment Certificate		
a. 所簽發的豁免證明書數目 No. of exemption certificates issued	73	65
b. 應其他國家機關要求而檢驗的外來船舶, 以簽發設備安全證明書 Foreign ships surveyed at the request of other national authorities for the issue of SEC	0	0
IV. 貨船無線電安全證明書 Cargo Ship Safety Radio Certificate		
a. 所簽發的豁免證明書數目 No. of exemption certificates issued	149	71
b. 應其他國家機關要求而檢驗的外來船舶, 以簽發無線電安全證明書 Foreign ships surveyed at the request of other national authorities for the issue of SRC	5	5
V. 其他 Others		
a. 所簽發的《海員培訓、發證和值班標準國際公約》最低安全配員證書 STCW Minimum Safe Manning Certificate issued	194	241
b. 對構造安全、設備安全、無線電安全證明書的監察, 包括中期檢驗 Safety Construction, Equipment and Radio Certificates monitored including intermediate surveys	573	1137
c. 對國際載重線證明書的監察, 包括定期檢驗 International Load Line Certificate monitored including periodic surveys	191	237
d. 對國際防止油污證書的監察 - 續期、年度 / 中期檢驗 International Oil Pollution Prevention Certificate monitored - renewal, annual/ intermediate surveys	242	307
e. 對新船公司所作的國際安全管理稽核 ISM audits of new shipping companies	9	23
f. 其他檢驗(例如合格證書等) Other surveys (e.g. Certificates of Fitness etc)	4	5

表 17 - 續  
TABLE 17 - Cont'd

B. 客船安全統計數字 Passenger Ships Safety Statistics	2001	2002
所管理公約客船數目 No. of convention passenger ships administered	36	37
所管理公約客船總噸位 Gross register tonnage of convention passenger ships administered	14364	16506
<b>I. 客船安全證明書 Passenger and Safety Certificates</b>		
a. 客船安全證明書 - 國際航線 PSSC - International Voyage	0	0
b. 客船安全證明書/高速船安全證明書 - 內河航限 PSSC/HSCSC - River Trade Limits	PSSC - 15 HSCSC - 28	PSSC - 1 HSCSC - 48
c. 延長客船安全證明書有效期 Extensions to Passenger and Safety Certificate	2	3
d. 客船安全證明書檢驗船舶總數 Total number of vessels surveyed for P&S Certificate	45	52
e. 受檢驗的客船無線電裝置 Passenger ship radio installations surveyed	45	61
f. 所簽發的載重線證書數目 No. of Load Line Certificate issued	8	8
g. 所簽發的載重線豁免證書數目 No. of Load Line Exemption Certificate issued	17	12
h. 所簽發的國際防止油污證書及增補數目 No. of IOPP Certificate with Supplement issued	7	11
i. 所簽發的國際防止油污豁免證書數目 No. of IOPP Exemption Certificate issued	1	6
j. 所簽發的最低安全配員證書數目 No. of Minimum Safe Manning Certificate issued	3	21
k. 對船公司所作的安全管理稽核 ISM audits of shipping companies	2	2
l. 對船舶所作的安全管理稽核 ISM audits of ships	19	11
m. 所簽發的 ISM 符合證明數目 No. of ISM Document of Compliance (DOC) issued	2	0
n. 所簽發的 ISM 安全管理證明書數目 No. of ISM Safety Management Certificate (SMC) issued	17	1
o. 所簽發的臨時 ISM 安全管理證明書數目 No. of Interim ISM Safety Management Certificate (SMC) issued	2	4

表 17 - 續  
TABLE 17 - Cont'd

II. 雜項檢查, 圖則審核和設備	<u>2001</u>	<u>2002</u>
Miscellaneous Inspection, plans approval and equipment		
a. 審核客船船體、機械和設備圖則 Plans examined for hull, machinery and equipment of passenger ships	968	422
b. 檢驗船舶以備拖帶或付運 Surveys for vessels clearing under tow or delivery	40	53
c. 驗證航行燈(電、油) Navigation lanterns (electric / oil) certified	0	0
d. 檢驗備有紀錄的充氣救生筏 / 前往檢驗次數 Inflatable liferafts with log sheets surveyed/ No. of survey visits	300/93	247/73
e. 經檢查和蓋章的救生圈 Lifebuoys, inspected and stamped	0	0
f. 經檢查和蓋章的救生衣 Lifejackets, inspected and stamped	0	0
g. 簽發檢查證明書、雜項檢驗 / 檢查 Certificate of Inspection issued, miscellaneous surveys/inspections	202	159

C. 港口國監督統計數字  
Port State Control Statistics

在香港特別行政區港口內進行的港口國監督檢查：

Port State Control Inspections in the harbour of Hong Kong Special Administrative Region:

a. 在履行身為港口國監督委員而對《東京諒解備忘錄》應有的責任下， 受港口國監督檢查的個別外來船舶數目 Number of individual foreign ships inspected under the obligation to Tokyo MOU, as a member Port State of the Committee	929	966
b. 對外來船舶進行港口國監督檢查(包括複檢)總數 Total number of Port State Control inspections carried out for foreign ships, including re-inspections	999	1 085
c. 被扣留在香港不符合標準船舶的數目 Number of sub-standard ships detained in Hong Kong	97	149

資料來源:	(A) (I)	船舶註冊及商船海員管理處	(A) (I)	Shipping Registry and Mercantile Marine Office
Data Sources:	(A) (II-V)	貨船安全組	(A) (II-V)	Cargo Ships Safety Section
	(B)	客船安全組	(B)	Passenger Ships Safety Section
	(C)	港口國監督組	(C)	Port State Control Section

表 18  
TABLE 18

本地船舶安全統計資料  
Statistics on Local Vessels Safety

A. 檢驗和檢查載客小輪、渡輪、貨船、水上食肆、機動帆船和水艇等 Surveys and Inspections of Passenger Launches, Ferry Vessels, Cargo Vessels, Marine Restaurants, Mechanised Junks and Water Boats, etc.	<u>2001</u>	<u>2002</u>
a. 簽發/批註乾舷勘定證書數目 No. of the Assignment of Freeboard Certificate Issued / Endorsed	736	670
b. 簽發安全設備 - 檢驗記錄 (驗船表格 183) 數目 No. of Survey Record - Safety Equipment ( Survey 183) Issued	16	22
c. 簽發/ 批註載重線證明書數目 No. of Load Line Certificate Issued / Endorsed	57	59
d. 簽發噸位丈量記錄數目 No. of Record of Tonnage Measurement Issued	4	1
e. 船隻傾斜測試及穩性確定數目 No. of Vessels Inclining Tested and Stability Information Assessed	54	97
f. 簽發認可運載散裝石油產品聲明書數目 No. of Declaration of Fitness for Vessel to Carry Petroleum Product in Bulk Issued	170	157
g. 簽發散裝有毒液體物質的防污證書數目 No. of Pollution Prevention Certificates for the Carriage of Noxious Liquid Substances in Bulk Issued	6	12
h. 簽發認可運載危險貨物聲明書數目 No. of Declaration of Fitness for the Carriage of Dangerous Goods Issued	33	35
i. 簽發香港防止油類污染明證書數目 No. of Hong Kong Oil Pollution Prevention Certificates Issued	32	21
j. 簽發驗船證書給載客小輪和渡輪數目 No. of Certificate of Survey Issued for Passenger Launches and Ferry Vessels	637	591
k. 簽發檢驗證明書給西式雜類船隻數目 No. of Certificate of Inspection Issued for Western Type Vessel of Miscellaneous Craft	293	303
l. 簽發檢驗證明書給亞洲式雜類船隻數目 No. of Certificate of Inspection Issued for Asiatic Type Vessel of Miscellaneous Craft	2 790	2 722
m. 執行安全檢驗(加簽 M.O. 70)用於停留不動船及雜類船隻數目 No. of Stationary and Miscellaneous Vessels for Safety Inspection (for Endorsing M.O. 70)	181	161

表 18 - 續  
TABLE 18 - Cont'd

A. 檢驗和檢查載客小輪、渡輪、貨船、水上食肆、機動帆船和水艇等  
Surveys and Inspections of Passenger Launches, Ferry Vessels, Cargo Vessels, Marine Restaurants, Mechanised Junks and Water Boats, etc.

	<u>2001</u>	<u>2002</u>
n. 停留不動船隻安全檢驗次數 No. of Stationary Vessels for Safety Inspection Visits	206	194
o. 執行其他政府部門要求檢查的船隻數目 No. of Inspections of Vessels for other Government Departments	89	88
p. 檢驗碰撞後破損的本地船隻數目 No. of Inspection surveys of Damaged Local Vessels after Collision	19	14
q. 抽查小輪、渡輪、水上食肆等數目 No. of Spot-checks on Launches, Ferry Vessels, Marine Restaurants etc.	17	21
r. 審核領牌船隻的船體，機械和設備圖則數目 No. of Plans of Hull, Machinery and Equipment Examined for Licensed Vessels	5 334	8 474
s. 海外檢驗領牌船隻次數 No. of Overseas visits for Inspection of Licensed Vessels	115	226
t. 完成首次檢驗而新領牌的船隻數目 No. of Newly Licensed Vessels after completed Initial Survey	33	63
u. 領牌船隻在本港首次及定期檢查次數 No. of Initial and Periodical Inspection Visits Made Locally to Licensed Vessels	5 382	5 196
v. 在本港檢驗領牌船隻的數目 (不包括停留不動船隻) No. of Licensed Vessels Inspected Locally (excluding Stationary Vessels)	3 720	3 616
w. 出版或已修訂的安全刊物 / 舉辦安全講座及研討會等總數 Total Number of Safety Publications Revised or Issued / Talks and Seminars Conducted etc.	10	10
x. 簽發 / 註檢驗證書/認可聲明書/記錄等給本地領牌船隻的總數目 Total no. of Inspection Certificates/ Declarations/ Records etc Issued/ Endorsed to Licensed Vessels	5 009	4 851
y. 檢驗本地船隻總次數 (包括新船、現有船隻及抽查船隻等) Total no. of Inspection Visits Made to Local Vessels (New, Existing and Spot-check Vessels etc.)	5 828	5 739
z. 檢驗本地船隻總隻數 (包括新船、現有船隻及抽查船隻等) Total no. of Local Vessels Inspected (New, Existing and Spot-check Vessels etc.)	3 934	3 840

註釋：(1) 項目 v 是項目 j 至 l 的總和

Notes: (1) Item v is the total of items j to l

(2) 項目 x 是項目 a 至 m 的總和

(2) Item x is the total of items a to m

(3) 項目 y 是項目 n 至 q, s 及 u 的總和

(3) Item y is the total of items n to q, s and u

(4) 項目 z 是項目 m, t 及 v 的總和

(4) Item z is the total of items m, t and v

表 18 - 續  
TABLE 18 - Cont'd

B. 檢查正在修理、拆卸或從事裝卸貨物的船舶、調查海上工業意外事故

Inspections of Vessels Undergoing Repair or Demolition or Engaged in Cargo Handling, Investigations of Marine Industrial Accidents.

	<u>2000</u>	<u>2001</u>	<u>2002</u>
a. 檢查正在修理的船舶 Inspections of Vessels Undergoing Repair	1 586	1636	1320
b. 檢查海事工程船舶 Inspections of Vessels Engaged in Marine Construction	149	243	374
c. 檢查遠洋船裝卸貨物工具 Cargo Gear Inspections on Ocean-going Vessels	446	482	405
d. 檢查遠洋船裝卸貨物 Stevedoring Inspections on Ocean-going Vessels	4 057	3876	3799
e. 檢查駁船裝卸貨物工具 Cargo Gear Inspections on Lighters	2 762	3131	3632
f. 檢查駁船裝卸貨物 Stevedoring Inspections on Lighters	1 394	1095	1341
g. 檢查貨櫃 Inspections of Containers	4 416	9042	8337
h. 調查致命的非海事工業意外 Non-marine Industrial Fatal Accidents Investigated	0	0	0
i. 調查致命的海事工業意外 Marine Industrial Fatal Accidents Investigated	6	9	11
j. 調查嚴重意外 Serious Accidents Investigated	30	19	23
k. 調查嚴重意外 (無傷亡) Serious Incidents (No Casualty) Investigated	3	3	1
l. 查詢非嚴重意外 Non-serious Accidents Inquired	375	557	343
m. 修船意外總數 Total Ship Repair Accidents	60 (38)	133 (103)	** (81)
n. 裝卸貨物意外總數 Total Cargo Handling Accidents	532 (393)	477 (331)	** (316)
o. 海事工程意外總數 Total Marine Construction Accidents	21 (15)	44 (37)	** (18)

註釋：( ) 9個月(即1月至9月期間)的統計數字  
\*\* 未有2002年全年的數字

Notes: ( ) Figures cover the 9 month period for January-September  
\*\* Figures for the whole year of 2002 not yet available



表 18 - 續  
TABLE 18 - Cont'd

B. 檢查正在修理、拆卸或從事裝卸貨物的船舶、調查海上工業意外事故  
Inspections of Vessels Undergoing Repair or Demolition or Engaged in Cargo Handling, Investigations of Marine Industrial Accidents

	<u>2000</u>	<u>2001</u>	<u>2002</u>
p. 簽發修船許可證 Letters of Permission to Undertake Repairs Issued	2 979	3 132	3104
q. 轉介檢控小組的個案 Cases Referred to Prosecutions Unit	2	1	4
r. 發出警告信 Warning Letters Issued	58	41	56
s. 發出安全指令 Safety Directions Issued	84	71	104
t. 出版或已修訂的安全小冊子/ 單張 / 海報 / 貼紙數目 Number of Safety Pamphlets / Leaflets / Posters / Stickers Published or Revised	5	3	10
u. 出版或已修訂的安全指南數目 Number of Safety Guides / Codes of Practice Published or Revised	0	0	3
v. 舉辦安全講座及研討會數目 Number of Safety Talks and Seminars Conducted	N.A.	4	12
w. 事工業安全檢查總數 (不包括貨海櫃檢查數目) Total Number of Marine Industrial Safety Inspections (excluding number of containers inspected)	10 394	10 463	10871
x. 調查及查詢的海事工業意外總數 Total Number of Marine Industrial Accidents Investigated / Inquired	414	588	378
y. 海事工業意外發生總數 Total Number of Marine Industrial Accidents Occurred	613 (446)	624 (471)	** (415)
z. 發出安全指令/ 出版或已修訂的安全 物 舉辦安全講座及研討會等總數 Total Number of Safety Directions Issued / Publications Revised or Issued / Talks and Seminars Conducted etc.	89	78	129

註釋： ( ) 9 個月(即 1 月至 9 月期間)的統計數字

N.A. 沒有數字

\*\* 未有 2002 年全年的數字

項目 w 是項目 a 至 f 的總和。

項目 x 是項目 h 至 l 的總和。

項目 y 是項目 m 至 o 的總和。

項目 z 是項目 s 至 v 的總和

Notes: ( ) Figures cover the 9 month period for January-September

N.A. Not Available

\*\* Figures for the whole year of 2002 not yet available

Item w is the total of items a to f.

Item x is the total of items h to l.

Item y is the total of items m to o.

Item z is the total of items s to v.

表 18 - 續  
TABLE 18 - Cont'd

C. 所失的香港註冊和持牌船舶  
Loss of Vessels Registered in Hong Kong

船舶類型 Class of Vessel	該類船隻數目 Number of Vessel		失船數目 Number Lost		失船百分率 Percentage Lost	
	2001	2002	2001	2002	2001	2002
IMO 公約船舶 (香港註冊) IMO Convention (HK Registered)	433	547	0	0	0	0

D. 2002 年 海上意外事故  
Marine Accidents in 2002

意外事故類別 Type of Accident	本港水域範圍以內 Within Hong Kong Waters				本港水域範圍以外 Outside Hong Kong Waters			
	個案數目 No. of Case	死亡人數 Persons Killed	受傷人數 Persons Injured	失蹤人數 Persons Missing	個案數目 No. of Case	死亡人數 Persons Killed	受傷人數 Persons Injured	失蹤人數 Persons Missing
碰撞 Collision	198	9	24	4	6	0	0	0
擱淺 / 觸礁 Stranding/ Grounding	32	0	2	0	5	0	0	0
沉沒 / 入水 Foundering / Sinking	14	2	0	1	5	0	0	25
火警 / 爆炸 Fire / Explosion	25	0	4	0	1	0	0	0
船隻失蹤 Missing	0	0	0	0	0	0	0	0
翻沉 / 傾斜 Capsized / Listing	9	1	0	0	0	0	0	0
結構故障 Structural Failure	0	0	0	0	1	0	40	0
機械故障 Machinery Failure	12	0	4	0	1	0	0	0
惡劣天氣 損壞 Heavy Weather Failure	2	0	0	0	0	0	0	0
接觸 Contact	39	1	3	0	3	0	0	0
器材損壞 Damage to Equipment	0	0	0	0	0	0	0	0
其他 Others	5	0	0	0	1	0	0	0
總數 TOTAL	336	13	37	5	23	0	40	25

表 18 - 續  
TABLE 18 - Cont'd

E. 海上意外事故調查  
Marine Accident Investigation

項目	Items	2001	2002
調查意外事故 (《船舶及港口管制條例》)	Accidents Investigated (Shipping and Port Control Ordinance)	6	11
初步研訊(《商船條例》)	Preliminary Inquiries (Merchant Shipping Ordinance)	1	1
領港研訊(《領港條例》)	Pilotage Inquiries (Pilotage Ordinance)	0	1
海事法庭	Marine Courts	0	0
調查委員會	Board of Inquiry	0	0
對調查委員會裁決提出上訴	Appeal against the decision by Board of Inquiry	0	0

資料來源: (A) 本地船舶安全組 (A) Local Vessels safety Section  
 Data Sources: (B) 海事處工業安全組 (B) Marine Industrial Safety Section  
 (C) (I) 船舶註冊及商船海員管理處 (C) (I) Shipping Registry and Mercantile Marine Office  
 (a) - (k) 記錄室, 中環海事分處 (a) - (k) Record Centre, Central Marine Office  
 (D) & (E) 海事意外調查組 (D) & (E) Marine Accident Investigation Section

表 19  
TABLE 19

海員發證、註冊和僱用統計資料  
Statistics on Seafarers' Certification, Registration and Employment

A. 遠洋合格證書考試 Foreign-going Examinations - Certificates of Competency	2001		2002	
	考試人數 Examined	及格人數 Passed	考試人數 Examined	及格人數 Passed
一級甲板高級船員 (商船船長) Deck Officer Class 1 (Master Mariner)				
筆試 Written	0	0	0	0
口試 Oral	3	3	6	6
二級甲板高級船員 Deck Officer Class 2				
筆試 Written	0	0	1	0
口試 Oral	1	1	0	0
訊號 Signal	0	0	0	0
三級甲板高級船員 Deck Officer Class 3				
筆試 Written	3	2	9	2
口試 Oral	3	2	3	3
訊號 Signal	1	1	1	1
小計 Sub-total	11	9	20	12
一級輪機師 Marine Engineer Officer - Class 1				
甲部 Part A	0	0	0	0
乙部 Part B	9	6	7	5
二級輪機師 Marine Engineer Officer - Class 2				
甲部 Part A	0	0	3	0
乙部 Part B	3	1	1	0
三級輪機師 Marine Engineer Officer - Class 3	135	52	25	15
小計 Sub-total	147	59	36	20
總計 Total	158	68	56	32

B. 內河航行考試 River Trade Examinations	2001		2002	
	考試人數 Examined	及格人數 Passed	考試人數 Examined	及格人數 Passed
一級甲板高級船員 Deck Officer Class 1				
筆試 Written	0	0	6	5
口試 Oral	2	2	3	3
二級甲板高級船員 Deck Officer Class 2				
筆試 Written	0	0	4	3
口試 Oral	0	0	5	4
訊號 Signal	0	0	0	0
三級甲板高級船員 Deck Officer Class 3				
筆試 Written	22	8	21	10
口試 Oral	11	9	13	12
訊號 Signal	7	6	9	8
小計 Sub-total	42	25	61	45
一級輪機師 Marine Engineer Officer - Class 1	0	0	0	0
二級輪機師 Marine Engineer Officer - Class 2	0	0	6	0
三級輪機師 Marine Engineer Officer - Class 3	3	1	4	0
小計 Sub-total	3	1	10	0
總計 Total	45	26	71	45

表 19 - 續  
TABLE 19 - Cont'd

C. 本地合格證書 Local Certificates of Competency	2001		2002	
	考試人數 Examined	及格人數 Passed	考試人數 Examined	及格人數 Passed
船長 - 300 噸或以下船隻 Master - Vessels up to 300 tons	127	66	107	49
船長 - 60 噸或以下船隻 Master - Vessels up to 60 tons	402	121	439	127
船長 - 漁船 Master - Fishing Vessels	39	11	59	19
船長 - 限制 Master - Restricted	8	8	2	2
小計 Sub-total	576	206	607	197
輪機員 - 渡輪船隻 Engineer - Ferry Vessels	5	2	3	3
輪機員 - 150 匹馬力以上船隻 Engineer - Vessels over 150 BHP	371	105	316	108
輪機員 - 150 匹馬力或以下船隻 Engineer - Vessels up to 150 BHP	18	6	30	11
輪機員 - 漁船 Engineer - Fishing Vessels	58	22	53	22
小計 Sub-total	452	135	402	144
總計 Total	1 028	341	1 009	341

D. 遊樂船隻證書考試 Pleasure Vessel Certificates Examinations	2001		2002	
	考試人數 Examined	及格人數 Passed	考試人數 Examined	及格人數 Passed
船長 - 遊樂船隻 (考試) Master - Pleasure Vessel (Examination)	2 922	1 427	2 461	1 414
船長 - 遊樂船隻 (豁免) Master - Pleasure Vessel (Exemption)	186	181	220	206
輪機員 - 遊樂船隻 (考試) Engineer - Pleasure Vessel (Examination)	3 491	2 076	3 312	1 434
輪機員 - 遊樂船隻 (豁免) Engineer - Pleasure Vessel (Exemption)	165	147	153	145
總計 Total	6 764	3 831	6 146	3 199

表 19 - 續  
TABLE 19 - Cont'd

E. 部門考試 Departmental Examinations		2001		2002	
		考試人數 Examined	及格人數 Passed	考試人數 Examined	及格人數 Passed
一級航行證書	1st Class Certificate of Navigation	3	3	0	0
二級航行證書	2nd Class Certificate of Navigation	0	0	0	0
三級航行證書	3rd Class Certificate of Navigation	1	0	2	0
一級本地船長	Coxswain Grade 1	13	13	0	0
二級本地船長	Coxswain Grade 2	98	57	94	35
三級本地船長	Coxswain Grade 3	54	40	124	63
一級小輪大燭	Launch Mechanic Class 1	7	7	0	0
二級小輪大燭	Launch Mechanic Class 2	0	0	0	0
三級小輪大燭	Launch Mechanic Class 3	0	0	0	0
一級輪機操作員	Engine Operator Grade 1	21	21	0	0
二級輪機操作員	Engine Operator Grade 2	7	5	68	17
三級輪機操作員	Engine Operator Grade 3	46	15	158	37
遊樂船隻船長	Pleasure Vessel Master	36	12	42	21
遊樂船隻輪機員	Pleasure Vessel Engineer	46	21	55	10
總計 Total		332	194	543	183

F. 其他考試 / 評定 Other Examinations/Assessments		2001		2002	
		考試人數 Examined	及格人數 Passed	考試人數 Examined	及格人數 Passed
救生艇筏熟練操作證書	Proficiency in Survival Craft Certificate	2	2	0	0
高級水手 / 水手證書	AB/EDH Certificate	1	1	0	0
視力測驗	Eye Sight Test	0	0	0	0
類型級別證書 (考試、重新生效及夜航批准)	Type Rating Certificate (Examination, Revalidation and Night Service Approval)	370	370	443	443
香港執照	Hong Kong Licence	3 144	3 144	8 356	8 356
暫時執照	Temporary Licence	659	659	6	6
本地豁免	Local Exemption	350	350	352	352
總計 Total		4 526	4 526	9 157	9 157

表 19 - 續  
TABLE 19 - Cont'd

G. 截至2002年12月31日為止的海員註冊人數  
Seafarer's Registration as at 31.12.2002

根據第478章註冊的海員 Seafarers Registered Under Cap.478	第一部 Part I	第二部 Part II	合計 Total
	3 104	695	3 799

H. 2002年 所發僱用登記簿數目  
Employment Registration Books Issued, 2002

續發簿	Subsequent Books	6
補發簿	Replacement Books	7
新海員簿	New Entrants Books	77
總計	Total	90

I. 2002年 僱用統計數字  
Employment Statistics, 2002

期間 Period	僱用海員方式 Seafarers Employed Through			總計 Total
	核准公司名冊 Permitted C.R.	總名冊 G.R.	緊急僱用 / 重新僱用等 Emergency / Re-employment, etc.	
2002年第一季 1st Quarter 2002	60	11	0	71
2002年第二季 2nd Quarter 2002	24	0	52	76
2002年第三季 3rd Quarter 2002	44	4	483	531
2002年第四季 4th Quarter 2002	61	0	1	62
總計 Total	189	15	536	740

J. 船公司及職位統計數字  
Companies and Posts Statistics

截至2002年12月31日為止在商船海員管理處登記僱用本港註冊海員的船公司數目 Shipping companies listed with M. M. Office to employ Hong Kong registered seafarers as at 31.12.2002	29
2002年 按船公司所交周年報表而編製的本港海員就業職位 Posts filled by Hong Kong seafarers as compiled from annual returns submitted by shipping companies, 2002	1 157

表 19 - 續  
TABLE 19 - Cont'd

K. 2002年 訂立和終結的香港註冊船舶船員協議條款  
Crew Agreement of Hong Kong Registered Ships Opened and Closed, 2002

項目 Item	所訂立的協議 Agreements Opened		終結的協議 Agreements Closed	
	在香港境內 In Hong Kong	在香港境外 Outside Hong Kong	在香港境內 In Hong Kong	在香港境外 Outside Hong Kong
船員協議條款數目 No. of agreements	72	490	53	386
總計 Total	562		439	

L. 香港註冊船舶僱用和解職的海員人數\*\*  
Number of Seafarers\*\* Employed and Discharged by Hong Kong Registered Ships

年份 Year	2000	2001	2002
所僱用的海員人數 No. of seafarers employed	15 958	19 404	24 162
解職的海員人數 No. of seafarers discharged	13 992	18 075	21 306

註釋： \*\* 數字包括在香港以外地方註冊的海員。  
Note: \*\* The figures include seafarers registered outside Hong Kong.

資料來源: (A) - (F) 海員發證組 (A) - (F) Seafarers' Certification Section  
Data Sources: (G) - (L) 商船海員管理處 (G) - (L) Mercantile Marine Office



表 20

TABLE 20

## 香港註冊船舶統計資料

## Statistics on Ships Registered in Hong Kong

## A. 2001 和 2002 年底的船舶數目和噸位

Number of Ships and Tonnage as at end of 2001 and 2002

	船舶數目 No. of ships	淨噸位 Net tonnage	總噸位 Gross tonnage
(i) 2001 年 12 月 31 日船舶註冊概況 On register as at 31.12.2001	653	7 941 601	13 725 551
(ii) 2002 年註冊的船舶 Ships Registered in the year of 2002	174	2 294 654	4 059 675
(iii) 2002 年取消註冊的船舶 Ships De-registered in the year of 2002	69	894 206	155 495
(iv) 2002 年 12 月 31 日船舶註冊概況 On register as at 31.12.2003	758	9 341 601	16 230 270

註釋: 淨噸位及總噸位以每單位 100 立方呎計算。 Net and gross tonnages are in units of 100 cubic feet.  
Notes: (i) + (ii) - (iii) ≠ (iv) 因部分註冊船舶 (i) + (ii) - (iii) ≠ (iv) due to alteration of tonnages of  
於 2002 年更改噸位所致。 some ships already on register in 2002.  
詳情請參閱第四部附錄 F 及 G。 For details, please see Appendices F & G in Part IV.

## B. 2002 年按總噸位分配分析香港註冊船舶數目

Ships Registered at Hong Kong by Gross Tonnage Distribution, 2002

總噸位分配 (噸) Gross Tonnage Distribution (tons)	船舶數目 No. of Ships
500 以下 Under 500	161
500 - 999	44
1 000 - 1 999	18
2 000 - 2 999	9
3 000 - 3 999	22
4 000 - 4 999	8
5 000 - 9 999	51
10 000 - 14 999	46
15 000 - 19 999	94
20 000 - 24 999	49
25 000 - 29 999	81
30 000 - 34 999	23
35 000 - 39 999	71
40 000 - 44 999	15
45 000 - 49 999	0
50 000 - 54 999	0
55 000 - 59 999	2
60 000 - 64 999	0
65 000 - 69 999	15
70 000 - 84 999	16
85 000 - 114 999	22
115 000 - 144 999	4
145 000 - 174 999	7
總計 Total	758

資料來源: 船舶註冊處  
Data Source: Shipping Registry

表 21  
TABLE 21

政府船隊統計資料  
Statistics on Government Fleet

		<u>01/02</u>	<u>02/03</u>
開支預算總額 (百萬元)	Total expenditure estimate (\$M)	423 (實際 Actual)	432 (預算 Estimate)
以 12 月 31 日計算的員工總數 (包括船員)	Total no. of staff (including crew) as at 31 <sup>st</sup> December	<u>2001</u> 679	<u>2002</u> 644
付運的政府船舶	Government Vessels delivered	10	24
新船招標 / 報價	Tenders/Quotations called for new vessels	18	12
新船合約	Contracts awarded for new vessels	24	12
已完成的合約及購買規格書	Contracts and procurements specifications completed	42	24
船舶總數	Total number of vessels	636	666
大型機動船舶	Major mechanized vessels	143	142
充氣式橡皮艇	Inflatable boats	172	186
快艇	Speed boats	55	62
駁船	Lighters	23	25
泳灘船艇	Beach crafts	168	170
泳灘救生筏	Beach rafts	38	38
小艇	Dinghies	37	43
大型機動船舶的可用率	Availability of major mechanized vessels	87%	88%
		<u>00/01</u>	<u>01/02</u>
大型機動船舶保養費總額 (百萬元)	Total maintenance cost of major mechanized vessels (\$M)	149.0	129.7
大型機動船舶平均保養費(百萬元)	Average maintenance cost of major mechanized vessels (\$M)	0.91	0.89
定期維修合約安排	Maintenance term contract arrangements	2001	2002
i. 船舶總數	i. Total number of vessels	64	81
ii. 主機總數	ii. Total number of main engines	140	148
政府船艇肇事個案	Accidents involving Government Craft	<u>2001</u>	<u>2002</u>
i. 肇事個案數目	i. Number of government vessels involved	31	35
ii. 工傷意外傷亡數目	ii. Number of casualties in industrial accidents		
a. 船塢員工	a. Dockyard staff	4	5
b. 船員	b. Crew	7	7
iii. 因工傷損失人-日總數	iii. Number of man-days lost		
a. 船塢員工	a. Dockyard staff	25	127
b. 船員	b. Crew	162	174

表 21 – 續  
TABLE 21 – Cont' d

參加職業安全及健康課程的人數

Number of Attendees to Occupational Safety and Health Training Courses (OSHC)

課程類別	Type of Training Course	2002
1. 職業安全健康局舉辦	Organized by the OSHC	26
2. 政府船隊科工業安全組舉辦	Organized by the Industrial Safety Section, GFD	210
3. 其他	Others	39

以 2002 年 12 月 31 日計算政府船艇調配情況

Deployment of Manned Government Vessels as at 31 December 2002

調配 Deployment	泳灘 船艇 Beach Crafts	泳灘 救生筏 Beach Rafts	小艇 Dinghies	充氣式 橡皮艇 Inflatable Boats	駁船 Lighters	大型機動 船舶 Major Mechanized Vessel	快艇 Speed Boat	總數 Total	大型機動船 平均可用率 Average Availability of Major Mechanized Vessel (%)
漁農自然護理署 AFCD	-	-	9	3	-	2	9	23	87.6
醫療輔助隊 AMS	-	-	-	1	-	-	-	1	-
民眾安全服務處 CAS	-	-	2	8	-	-	-	10	-
土木工程署 CED	-	-	-	-	-	3	-	3	90.2
懲教署 CSD	-	-	-	-	-	2	-	2	84.6
香港海關 C&ED	-	-	-	9	-	11	2	22	90.7
環境保護署 EPD	-	-	-	1	-	1	-	2	88.3
消防處 FSD	-	-	-	17	-	9	9	35	88.8
衛生署 DH	-	-	2	-	-	3	-	5	91.6
香港警務處 HKPF	-	-	3	65	2	58	31	159	88.3
入境事務處 Imm D	-	-	-	-	-	7	-	7	86.1
康樂及文化事務署 LCSD	170	38	14	76	-	-	2	300	-
海事處 MD	-	-	10	3	23	44	8	88	89.0
水務署 WSD	-	-	3	3	-	2	1	9	90.4
總數 Total	170	38	43	186	25	142	62	666	87.9

註釋： - 不適用  
Note: - Not Applicable

資料來源： 政府船隊科  
Data Source: Government Fleet Division

表 22  
TABLE 22

海港繫泊浮泡統計資料  
Statistics on Harbour Mooring Buoys

A. 浮泡統計資料  
Buoys Statistics

	<u>2001</u>	<u>2002</u>
“A 級”繫泊浮泡數目*	30	28
No. of "A class" mooring buoys*		
“B 級”繫泊浮泡數目*	26	25
No. of "B class" mooring buoys*		
“A 級”浮泡訂用日數	3 513	2 388
Days booked/occupied of "A class" buoys		
“B 級”浮泡訂用日數	2 774	1 724
Days booked/occupied of "B class" buoys		
“A 級”浮泡訂用百分率	37.5%	28.8%
Percentage of "A class" buoys used based on booking		
“B 級”浮泡訂用百分率	36.3%	30.1%
Percentage of "B class" buoys used based on booking		

備註: \* 年終數字  
Remark: \* Figures as at end of the year

上述數字只顯示訂用情況，實際使用率則如下：

Whilst the above figures are indicative of booking usage, the actual physical occupancy rates are as follows:

		<u>2001</u>	<u>2002</u>
“A 級”浮泡	"A class" Buoys	25.8%	18.7%
“B 級”浮泡	"B class" Buoys	27.6%	18.3%

B. 浮泡保養  
Buoys Maintenance

		<u>2000</u>	<u>2001</u>	<u>2002</u>
按期保養的燈浮標	Light Buoys maintained	102	112	108
按期保養的養魚區浮泡	Mariculture Buoys maintained	182	182	182
按期保養的小型繫泊浮泡	Minor Mooring maintained	181	174	180
按期保養的大型繫泊浮泡	Major Mooring maintained	15	18	18
按期保養的“A 級”海港繫泊浮泡	Harbour mooring maintained "A class"	31	31	28
按期保養的“B 級”海港繫泊浮泡	Harbour mooring maintained "B class"	27	27	25

資料來源: (A) 船隻航行監察中心  
Data Sources: (B) 港口後勤組

(A) Vessel Traffic Centre  
(B) Port Logistics Section

表 23  
TABLE 23

2002 年 按分布地點分析香港私用繫泡數目  
Number of Private Moorings Laid in Hong Kong by Location, 2002

	分布地點	Location	私用繫泡數目 Number of Private Mooring
中部 Central	香港仔南避風塘 (白沙灣)	Aberdeen South Typhoon Shelter (Pak Sha Wan)	1
	香港仔南避風塘 (布廠灣)	Aberdeen South Typhoon Shelter (Po Chong Wan)	373
	香港仔西避風塘	Aberdeen West Typhoon Shelter	4
	香港仔西避風塘 (防波堤外)	Aberdeen West Typhoon Shelter (Outside Breakwater)	18
	長洲避風塘	Cheung Chau Typhoon Shelter	15
	大嶼山愉景灣	Discovery Bay, Lantau Island	6
	熨波洲	Middle Island	98
	南丫島模達灣	Mo Tat Wan, Lamma Island	0
	大嶼山稔樹灣	Nim Shue Wan, Lantau Island	9
	南丫島波羅嘴	Po Lo Tsui, Lamma Island	10
	皇后碼頭西	Queen's Pier West	1
	赤柱正灣	Stanley Main Beach	4
	大潭	Tai Tam	45
	南丫島榕樹灣	Yung Shue Wan, Lamma Island	1
	堅尼地城新海旁	Kennedy Town New Praya	5
	灣仔龍景街對出海旁	Off Lung King Street (Wan Chai)	5
	坪洲西	Peng Chau West	2
	南丫島鹿洲灣	Luk Chau Wan, Lamma Island	1
	南丫島蘆荻灣	Lo Tik Wan, Lamma Island	1
		小計	Sub-total
東部 East	銅鑼灣避風塘	Causeway Bay Typhoon Shelter	374
	銅鑼灣避風塘 (防波堤外)	Causeway Bay Typhoon Shelter (Outside Breakwater)	2
	西貢白沙灣	Hebe Haven	769
	大埔船灣海	Shuen Wan Hoi, Tai Po	3
	大埔大尾篤	Tai Mei Tuk, Tai Po	39
	西貢大網仔	Tai Mong Tsai, Sai Kung	7
	西貢大網仔(阿公灣)	Tai Mong Tsai, Sai Kung (A Kung Wan)	1
	西貢斬竹灣	Tsam Chuk Wan, Sai Kung	10
	西貢早禾坑	Tso Wo Hang, Sai Kung	12
	往灣	Wong Wan (Double Haven)	2
	油塘灣	Yau Tong Wan	2
	三家村避風塘	Sam Ka Tsuen Typhoon Shelter	2
	高塘口灣	Ko Tong Hau Wan	1
	濠西洲	Kau Sai Chau	2
	赤徑口	Chek Keng Hau	2
		小計	Sub-total

表 23 - 續  
TABLE 23 – Cont' d

	<u>分布地點</u>	<u>Location</u>	<u>私用繫泡數目</u> Number of <u>Private Mooring</u>
西部 West	荔枝角	Lai Chi Kok	5
	北大嶼山	North Lantau	3
	大嶼山竹篙灣	Penny's Bay, Lantau Island	0
	藍巴勒海峽 (避風塘外)	Rambler Channel (Outside Typhoon Shelter)	6
	昂船洲東南	Stonecutters Island South East	1
	大欖	Tai Lam	3
	汀九	Ting Kau	65
	土瓜灣	To Kwa Wan	4
	青衣北	Tsing Yi North	4
	青衣西	Tsing Yi West	4
	荃灣	Tsuen Wan	87
	屯門 (渡輪碼頭以西)	Tuen Mun (West of Ferry Pier)	1
	屯門避風塘	Tuen Mun Typhoon Shelter	12
	屯門 (避風塘外)	Tuen Mun (Outside Typhoon Shelter)	8
	油麻地 (新避風塘防波堤外)	Yaumatei (Outside New T.S. Breakwater)	33
	油麻地避風塘	Yaumatei Typhoon Shelter	19
	<hr/>	<hr/>	
	小計	Sub-total	255
總計 Total			<hr/> <hr/> 2 082

資料來源: 私用繫泡分組  
Data Source: Private Mooring Sub-unit

表 24  
TABLE 24

垃圾收集、油污和檢控個案  
Refuse Collection, Oil Pollution and Prosecutions

A. 垃圾收集和油污事故

Refuse Collection and Oil Pollution Incident

項目	Item	2000	2001	2002
從海港收集的垃圾(公噸)	Refuse collected from harbour (tonnes)	8 713	9 394	9 277
從船舶收集的垃圾(公噸)	Refuse collected from vessel (tonnes)	2 590	2 660	2 591
處理的油污事故(宗)	Oil Pollution incidents tackled (cases)	52	66	79

B. 檢控統計數字

Prosecution Statistics

罪行 Offence	陳詞/聆訊個案 No. of cases heard		定罪個案 No. of cases convicted		罰款 Fined (HK\$)	
	2001	2002	2001	2002	2001	2002
違反碰撞規例 Breach of Collision Regulations	179	84	167	82	181 050	117 200
船上沒有合格船長/輪機員 No qualified master/engineer on board	718	343	710	339	683 700	250 900
違反牌照條件 Breach of licence condition	157	144	157	144	93 761	157 250
未經允許進入機場入口區域 Entered into airport approach area without permission	25	5	24	5	27 310	6 100
靠泊於已展示禁止船隻靠泊告示的岸壁/登岸梯級 Lying alongside seawall/landing steps prohibited by Notice	100	98	100	98	111 550	104 050
船隻未有領牌/並無有效牌照 Vessel was not licensed/did not have a valid licence	181	198	179	198	445 900	416 150
未獲允許運載乘客/超額運載乘客 Carrying passenger without permission/excessive passengers	7	35	7	35	3 800	14 560
沒有陳示有效的驗船/保險證明書 Failing to display valid certificate of survey/insurance	18	4	18	4	7 350	1 800
超速行駛 Steaming in excessive speed	56	35	56	35	45 900	22 950
海上拋置廢物 Marine littering	65	16	65	16	16 800	4 650
海上拋置廢物 (定額罰款) Marine Littering (Fixed Penalty Notice)	-	52	-	52	-	#31 800
在公共渡輪上吸煙* Smoking on board public ferry*	0	2	0	1	0	300
其他海事罪行 Other marine offences	473	1161	463	1158	870 990	2 926 250
總計 Total	1 979	2177	1 946	2167	2 488 111	4 053 960

註釋： - 不適用  
\* 個案由各公共渡輪公司提出再轉交海事處跟進檢控工作。  
# 一個申請法庭命令個案，附加罰款\$600。

Note: - Not Applicable  
\* Cases initiated by public ferry companies and referred to Marine Department for follow up prosecution actions.  
# One Court Order applied and an additional penalty of HK\$600 imposed.

資料來源： (A) 港口後勤組 (A) Port Logistics Section  
Data Sources: (B) 檢控小組 (B) Prosecution Unit

表 25  
TABLE 25

香港持牌船隻統計資料  
Statistics on Hong Kong Licensed Vessels  
(領有有效牌照)  
(with Valid Licence)

	<u>2001</u>	<u>2002</u>
小輪和渡輪		
Launches and Ferries		
只限往來指明遮蔽水域	23	23
Plying within Specified Shelter Waters		
只限往來內河航限/香港水域	645	627
Plying within River Trade Limits/Waters of Hong Kong		
小計	668	650
Sub-total		
雜類航行器		
Miscellaneous Craft		
機動	6 026	6 082
Mechanised		
非機動	2 067	1 929
Non-mechanised		
小計	8 093	8 011
Sub-total		
遊樂船隻	4 246	4 515
Pleasure Vessels		
小計 - 香港持牌船隻 (不包括住家船隻)	13 007	13 176
Sub-total - Hong Kong Licensed Vessels (excluding Dwelling Vessels)		
住家船隻		
Dwelling Vessels		
長洲避風塘	1	0
Cheung Chau Typhoon Shelter		
船灣避風塘	0	0
Shuen Wan Typhoon Shelter		
銅鑼灣避風塘	8	6
Causeway Bay Typhoon Shelter		
小計	9	6
Sub-total		
總數		
Total	13 016	13 182

2002 年 12 月 31 日止的閒置船隻

Vessels laid-up during the year ending 31 December 2002

23

資料來源: 牌照及關務組

Data Source: Licensing and Port Formalities Section



表 26

TABLE 26

2002 年 按噸位等級分析香港持牌船隻  
Hong Kong Licensed Vessels by Tonnage Classification, 2002

雜類航行器 Miscellaneous Crafts		60 淨噸及以下 60 net tons and below		61 至 300 淨噸 61 - 300 net tons		300 淨噸以上 Over 300 net tons		總計 Grand Total
		機動 Mechanised	非機動 Non-Mechanised	機動 Mechanised	非機動 Non-Mechanised	機動 Mechanised	非機動 Non-Mechanised	
第 I 類 Class I	載客舢舨 Passenger Sampan	96	22	-	-	-	-	118
第 II 類 Class II	駁船和躉船 Lighters and Barges	125	7	179	54	53	743	1 161
第 III 類 Class III	固定船隻 Stationary Vessels	-	182	-	29	-	8	219
第 IV 類 Class IV	漁船 Fishing	365	688	-	-	-	-	1 053
	鋼殼漁船 Steel Fishing	-	-	21	-	-	-	21
	雜類船隻 Miscellaneous	335	87	3	34	2	67	528
	裝有舷外機的開敞式舢舨 Outboard Open Sampan	2 603	-	-	-	-	-	2 603
第 V 類 Class V	營業船隻 Trading Vessels	37	-	5	-	-	-	42
第 VI 類 Class VI	漁船 Fishing	778	1	1 480	-	-	-	2 259
第 VII 類 Class VII	浮塢/浮置工場 Floating Dock/Workshop	-	-	-	1	-	4	5
第 VIII 類 Class VIII	水上食肆 Floating Restaurant	-	-	-	-	-	2	2
小輪和渡輪 Launches and Ferries		429	-	211	-	10	-	650
總數 Total		4 768	987	1 899	118	65	824	8 661

註釋： 不包括遊樂船及住家船隻

Notes: Excluding Pleasure Vessels and Dwelling Vessels

- 不適用

- Not Applicable

資料來源：

Data Source:

牌照及關務組

Licensing and Port Formalities Section

表 27  
TABLE 27

用作裝卸貨物和海港工程的持牌船隻 (屬第 II 類持牌船隻)  
Licenses on Cargo Working and Harbour Engineering Crafts (i.e. Class II Vessel Licenses)

A. 有效牌照和待續牌照  
Valid Licences and Pending Renewal Licences

年份 Year	非自航鋼躉 Dumb Steel Lighter		非自航木躉 Dumb Wooden Lighter		機動貨艇 Motor Cargo Boats		總數 Total	
	(%)		(%)		(%)		(%)	
1992	1 639	(+1.4)	1	(0)	414	(+4.0)	2 054	(+1.9)
1993	1 658	(+1.2)	1	(0)	424	(+2.4)	2 083	(+1.4)
1994	1 605	(-3.2)	1	(0)	405	(-4.5)	2 011	(-3.5)
1995	1 475	(-8.1)	0	-	390	(-3.7)	1 865	(-7.3)
1996	1 380	(-6.4)	0	-	368	(-5.6)	1 748	(-6.3)
1997	1 276	(-7.5)	0	-	363	(-1.4)	1 639	(-6.2)
1998	1 148	(-10.0)	0	-	378	(+4.1)	1 526	(-6.9)
1999	1 040	(-9.4)	0	-	396	(+4.8)	1 436	(-5.9)
2000	1 020	(-1.9)	0	-	404	(+2.0)	1 424	(-0.8)
2001	980	(-3.9)	0	-	416	(+3.0)	1 396	(-2.0)
2002	928	(-5.3)	0	-	404	(-2.9)	1 332	(-4.6)

B. 有效牌照  
Valid Licences

年份 Year	非自航鋼躉 Dumb Steel Lighter		非自航木躉 Dumb Wooden Lighter		機動貨艇 Motor Cargo Boats		總數 Total	
	(%)		(%)		(%)		(%)	
2002	804	(-9.2)	0	-	357	(-6.3)	1 161	(-8.3)

註釋： - 不適用 ( ) % 與去年比較  
Notes: - Not Applicable ( ) % Changes over the preceding year

資料來源： 牌照及關務組  
Data Source: Licensing and Port Formalities Section

表 28  
TABLE 28

2002 年對住家船隻的清除和管制  
Clearance and Control of Dwelling Vessels, 2002

地點 Place	沉沒船隻數目 No. of Craft Sunk	清除船隻數目 No. of Craft Cleared	遷徙人數 No. of Persons Resited
長洲避風塘 Cheung Chau Typhoon Shelter	0	1	3
銅鑼灣避風塘 Causeway Bay Typhoon Shelter	0	2	0
總數 Total	0	3	3

資料來源: 牌照及關務組

Data Source: Licensing and Port Formalities Section

附錄 A

APPENDIX A

海事處組織架構圖

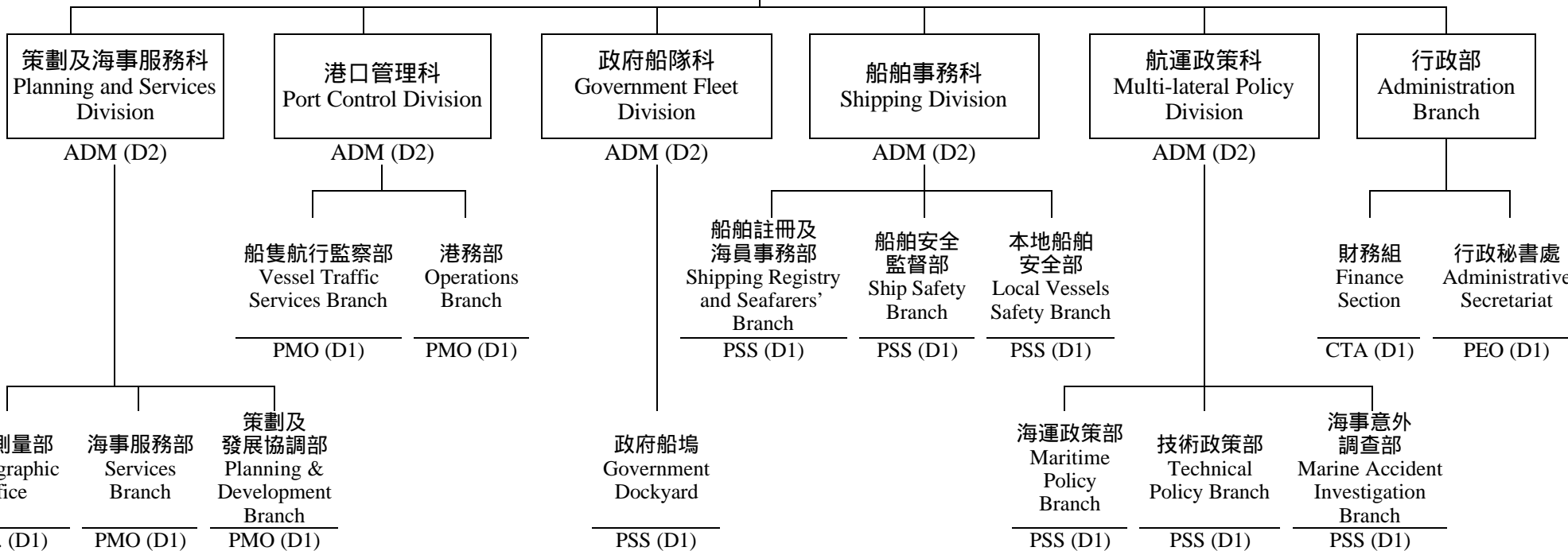
Marine Department Organization Chart

海事處處長

Director of Marine (D6)

海事處副處長

Deputy Director of Marine (D3)



圖列 Legend:

ADM	= 海事處助理處長	Assistant Director of Marine
PMO	= 首席海事主任	Principal Marine Officer
PSS	= 首席驗船主任	Principal Surveyor of Ships
PEO	= 首席行政主任	Principal Executive Officer

Hydr.	= 海道測量師	Hydrographer
CTA	= 總庫務會計師	Chief Treasury Accountant
CEO	= 總行政主任	Chief Executive Officer
D6	= 首長薪級第 6 點	Directorate Level 6
D3	= 首長薪級第 3 點	Directorate Level 3
D2	= 首長薪級第 2 點	Directorate Level 2
D1	= 首長薪級第 1 點	Directorate Level 1

附錄 B  
APPENDIX B

2002 年 12 月 31 日海事處編制和實際員額  
Marine Department Establishment and Strength as at 31.12.2002

		編制 Establishment	實際員額 Strength
<u>首長級人員</u> <u>Directorate Officers</u>			
海事處處長	Director of Marine (D6)	1	1
海事處副處長	Deputy Director of Marine (D3)	1+1*	2
海事處助理處長	Assistant Director of Marine (D2)	5	4
首席海事主任	Principal Marine Officer (D1)	4	4
首席驗船主任	Principal Surveyor of Ships (D1)	7	7
首席行政主任	Principal Executive Officer (D1)	1	1
總庫務會計師	Chief Treasury Accountant (D1)	1	1
海道測量師	Hydrographer (D1)	1	1
<u>部門職系</u> <u>Departmental Grade</u>			
高級海事主任	Senior Marine Officer	18	18
海事主任	Marine Officer	41	40
海事監督	Marine Controller	13	13
助理海事監督	Assistant Marine Controller	52	50
高級船舶安全主任	Senior Shipping Safety Officer	1	1
船舶安全主任	Shipping Safety Officer	9	8
高級驗船主任	Senior Surveyor of Ships	16	16
驗船主任	Surveyor of Ships	25	25
高級助理船務主任	Senior Assistant Shipping Master	19	19
助理船務主任	Assistant Shipping Master	2	2
一級海事督察	Marine Inspector I	77	77
二級海事督察	Marine Inspector II	111	111
輔航設備監督	Superintendent of Aids to Navigation	1	1
助理輔航設備監督	Assistant Superintendent of Aids to Navigation	2	2

附錄 B - 續  
APPENDIX B - Cont'd

		編制 Establishment	實際員額 Strength
總驗船督察	Chief Ship Inspector	2	2
高級驗船督察	Senior Ship Inspector	11	11
驗船督察	Ship Inspector	23	23
助理驗船督察	Assistant Ship Inspector	3	1
小輪船員督導員	Launch Crew Supervisor	4	4
高級小輪船長	Senior Launch Master	79	78
小輪船長	Launch Master	67	60
小輪助理員	Launch Assistant	258	247
高級小輪大偈	Senior Launch Mechanic	3	3
小輪大偈	Launch Mechanic	1	1
海事工業安全督察	Marine Industrial Safety Inspector	8	8
測量服務員	Surveyor Attendant	1	1
<u>一般職系</u> <u>General Grade</u>			
高級統計師	Senior Statistician	1	1
一級統計主任	Statistical Officer I	1	1
二級統計主任	Statistical Officer II /	1	1
見習統計主任	Student Statistical Officer		
高級庫務會計師	Senior Treasury Accountant	1	1
庫務會計師	Treasury Accountant	3	3
高級會計主任	Senior Accounting Officer	1	1
一級會計主任	Accounting Officer I	1	1
二級會計主任	Accounting Officer II	3	3
總行政主任	Chief Executive Officer	1	1
高級行政主任	Senior Executive Officer	2	2
一級行政主任	Executive Officer I	7	7
二級行政主任	Executive Officer II	2	2
高級中文主任	Senior Chinese Language Officer	1	1
一級中文主任	Chinese Language Officer I	2	2
二級中文主任	Chinese Language Officer II	2	1

附錄 B - 續  
APPENDIX B - Cont'd

		編制 Establishment	實際員額 Strength
製圖師	Cartographer /	1	1
助理製圖師	Assistant Cartographer		
高級電子工程師	Senior Electronics Engineer	1	1
電子工程師	Electronics Engineer /	2	2
助理電子工程師	Assistant Electronics Engineer		
高級土地測量師	Senior Land Surveyor	1	1
土地測量師	Land Surveyor /	2	2
助理土地測量師	Assistant Land Surveyor		
電子督察	Electronics Inspector	1	1
助理空氣調節督察	Assistant Air-Conditioning Inspector	1	1
首席技術主任(製圖)	Principal Technical Officer (Cartographic)	1	1
高級技術主任(製圖)	Senior Technical Officer (Cartographic)	3	3
技術主任(製圖)	Technical Officer (Cartographic) /	6	6
見習技術主任(製圖)	Technical Officer Trainee (Cartographer)		
高級文書主任	Senior Clerical Officer	7+1*	8
文書主任	Clerical Officer	29	29
助理文書主任	Assistant Clerical Officer	73	70
文書助理	Clerical Assistant	123	120
辦公室助理員	Office Assistant	15	14
高級物料供應主任	Senior Supplies Officer	1+1*	2
物料供應主任	Supplies Officer	1	1
助理物料供應主任	Assistant Supplies Officer	1	1
高級物料供應員	Senior Supplies Supervisor	1	1
一級物料供應員	Supplies Supervisor I	3	3
二級物料供應員	Supplies Supervisor II	11	11
助理物料供應員	Supplies Assistant	3	3
物料供應服務員	Supplies Attendant	4	4
高級私人秘書	Senior Personal Secretary	1	0
一級私人秘書	Personal Secretary I	6	4
二級私人秘書	Personal Secretary II	23	23

附錄 B - 續  
APPENDIX B - Cont'd

		編制 Establishment	實際員額 Strength
打字督導	Supervisor of Typing Services	1	1
機密檔案室助理	Confidential Assistant	1	1
繕校員	Calligraphist	2	2
高級打字員	Senior Typist	1	1
打字員	Typist	8	8
汽車司機	Motor Driver	4	4
<u>共通職系</u> <u>Common Grade</u>			
總技術主任	Chief Technical Officer	3	2
高級電氣督察	Senior Electrical Inspector	2	2
電氣督察	Electrical Inspector	4	4
助理電氣督察	Assistant Electrical Inspector	3	3
高級機械督察	Senior Mechanical Inspector	7	7
機械督察	Mechanical Inspector	12	12
助理機械督察	Assistant Mechanical Inspector	6	6
首席測量主任(輪機)	Principal Survey Officer (Engineering)	1	1
高級測量主任(輪機)	Senior Survey Officer (Engineering)	5	5
測量員(輪機)	Survey Officer (Engineering) /	13	13
見習測量員(輪機)	Survey Officer Trainee (Engineering)		
一級監工	Works Supervisor I	16	14
二級監工	Works Supervisor II	10	7
高級技工	Senior Artisan	42	40
技工	Artisan	138	127
丈量員	Chainman	4	4
產業看管長	Head Property Attendant	1	1
產業看管員	Property Attendant	7	7
二級工人	Workman II	38	38
<hr/>	<hr/>	<hr/>	<hr/>
總計	Total	<u>1547+3*</u>	<u>1494</u>

註釋: \* 編外職位

Note: \*Supernumerary post



附錄 C  
APPENDIX C

2002 年海事處訓練課程  
Training Courses Conducted by Marine Department in 2002

課程名稱 Course Title	學期 Duration	*參加學員 *Target Participants	班級數目 Number of Class	學員數目 No. of Participants
1. 電子海圖顯示及資料系統 Electronic Chart Display and Information System Basic Course (ECDIS)	1 day	MI II, AMC, MC, SMO, MO, SASM, SM	16	150
2. 電子海圖顯示及資料系統 Electronic Chart Display and Information System ORCA	1 day	MI II, MO, Crew	1	8
3. 定額罰款(公共地方潔淨罪行)條例課程 Fixed Penalty (Public Cleanliness Offences) Ordinance Course	1 day	MI I, MI II, MO, AMC, FDO	7	137
4. 定額罰款(公共地方潔淨罪行)工作坊 Fixed Penalty (Public Cleanliness Offences) Workshop	1/2 day	SASM, MO, MI	2	35
5. 全球海上遇險及安全系統 (通用操作員證書 – 縮短課程) GMDSS (General Operators Certificate - Abridged Course)	14 days	MO, SMO	1	4
6. 全球海上遇險及安全系統 (通用操作員證書) GMDSS (General Operators Certificate Course)	15 days	SMO, MO, MI, S, OFTA	1	6
7. 全球海上遇險及安全系統 (限用操作員證書) GMDSS (Restricted Operator's Certificate Course)	5 days	AMC, MC, MI II, SASM	5	26
8. 全球海上遇險及安全系統 (限用操作員證書 – 縮短課程) GMDSS (Restricted Operator's Certificate -Abridged Course)	4 days	MC, AMC	7	29
9. 民安隊 – 海上油污訓練課程 CAS - Oil Pollution Training Programme	2 - 3 days	CAS	3	60
10. 康文署 – 海上油污訓練 LCSD Oil Pollution Training Course	1 day	LCSD	1	22
11. 基本電腦知識入門課程 Basic Computer Knowledge Introduction course for elementary users	1 day	CA, CO, PS II, MO	1	8

附錄 C - 續  
APPENDIX C - Cont'd

課程名稱 Course Title	學期 Duration	*參加學員 *Target Participants	班級數目 Number of Class	學員數目 No. of Participants
12. 視窗 2000 專業版安裝及網絡工作坊 Windows 2000 Professional Installation and Networking Workshop	1 day	CA, CO, PS II, MO	1	16
13. 海事督察訓練課程 MI Training Course	4 months	MI II	2	28
14. 基本海上搜救計劃課程 Basic Maritime SAR Planning Course	4 days	MO	1	3
15. 船隻航行監察模擬課程 VTS Simulator Course	5 days	MC, AMC	7	28
16. 船隻航行監察導師課程 VTS Instructor Course	10 days	PRC Officials	1	4
17. 船隻航行監察督導員課程 VTS Supervisor Course	2 days	MC	2	4
18. 個人品性訓練課程 Personal Attribute	1 day	MC, AMC	7	29
19. 海事督察增強課程 MI II Enhancement	2.5 months	MI II	1	6

\*參加學員\*Target Participants

AMC - 助理海事督察 Assistant Marine Controller	MI II - 二級海事督察 Marine Inspector II
CA - 文書助理 Clerical Assistant	MO - 海事主任 Marine Officer
CAS - 民眾安全服務處 Civil Aid Service	OFTA - 電訊管理局 Office of the Telecommunication Authority
CO - 文書主任 Clerical Officer	PRC Official - 中華人民共和國 幹部 People's Republic of China Official
Crew - 水手 Crew	PS II - 二級私人秘書 Personal Secretary II
FDO - 船隻調配主任 Fleet Deployment Officer	S - 驗船主任 Surveyor
LCSD - 康樂及文化事務署 Leisure and Cultural Services Department	SASM - 高級助理船務主任 Senior Assistant Shipping Master
MC - 海事監督 Marine Controller	SM - 系統經理 System Manager
MI I - 一級海事督察 Marine Inspector I	SMO - 高級海事主任 Senior Marine Officer

附錄 D  
APPENDIX D

2002 年海事處訪客  
Visitors to the Marine Department, 2002

年內，本處曾經接待以下訪客：

During the year under review, the Department hosted the following visitors:-

1. 經濟發展及勞工局局長葉澍堃先生。  
Mr. IP Shu-kwan, G.B.S., J.P., Secretary for Economic Development and Labour.
2. 財政司司長梁錦松先生。  
Mr. Anthony LEUNG Kam-chung, G.B.S., J.P., the Financial Secretary.
3. 中華人民共和國交通部副部長洪善祥先生。  
Mr. HONG Shanxiang, Vice Minister, Ministry of Communications, PRC.
4. A group of 16 general officers from the U.S. National Defense University CAPSTONE '02 Class, U.S.A.
5. A delegation led by Mr. Vedprakash P GOYAL, Honourable Union Minister of Shipping, from the Government of the Republic of India.
6. A delegation led by Mr. Tsutomu Niki from the Tokushima Prefecture Port Sales Mission.
7. President Leif Terje Loddosol and CEO Rolf Saether of the Norwegian Shipowner's Association.
8. A delegation from the Transport Sub-Committee of the Transport, Local Government and the Regions Committee of the UK House of Commons.
9. A delegation of 10 members from the Thailand Harbour Board.
10. Mr. Angelo MOUZOUROPOULOS, the Director General of Immarbe of the Belize Government.
11. Mr. Peter Bjerregaard, Managing Director and Mr. Jan Fritz, Deputy Managing Director from the Danish Shipowners Association.
12. A delegation of 24 members from the Committee for Finance in the Parliament of Norway.
13. His Excellency Mr. Adrian Nastase, Prime Minister of Romania and his delegation.

附錄 D – 續  
APPENDIX D – Cont' d

14. Mr. Mans Jacobsson, the Director of the Oil Pollution Compensation International Fund.
15. A delegation led by Mr. Wim VAN SLUIS, Akderman and Port Councillor, from the Port of Rotterdam.
16. Mr. Dan Petty, President, North Texas Commission, U.S.A.
17. 中華人民共和國經濟貿易委員會貿易市場局副局長房愛卿先生  
Mr. FANG Aiging, Vice-Director, the Bureau of Trade and Market, State Economic and Trade Commission, PRC.
18. A delegation of 20 persons from the Institute of Sea Transport.
19. A delegation of 10 parliamentarians from the German Federal State of Schleswig-Holstein.
20. A group of 3 legislators from the Commission of Communications of the Chamber of Deputies of Mexico.
21. Mr. Didier REYNDERS, Minister of Finance of Belgium.
22. A delegation from the Chubu Economic Federation (Chukeiren).
23. A delegation from the Confederation of India Industry (CII), Chennai, India.
24. A delegation from Port of Rotterdam.
25. A delegation from the Transport Committee, Kwun Tong District Council.

附錄 E  
APPENDIX E

2002 年 新訂海事法例  
New Maritime Legislation, 2002

列載二零零二一月一日至二零零二年十二月三十一日通過有關海事處工作及船務的法例：

The following legislation affecting the work of the Department and shipping was enacted during the year under review (1.1.2002 – 31.12.2002):

法例名稱	Title	法例編號 L.N. No.
2002 年海岸公園及海岸保護區(修訂)規例	Marine Parks and Marine Reserves (Amendment) Regulation 2002	182/2002
商船(限制船東責任)(利率)令	Merchant Shipping (Limitation of Shipowners Liability) (Rate of Interest) Order	86/2002
2002 年領港(費用)(條訂)令	Pilotage (Dues) (Amendment) Order 2002	234/2002
2002 年船舶及港口管制(修訂)規例	Shipping and Port Control (Amendment) Regulation 2002	117/2002
中國客運碼頭限制區域界線公告	China Ferry Terminal Restricted Area Boundaries Notice	138/2002
2002 年(生效日期)公告	(Commencement) Notice 2002	156/2002
2002 年船舶及港口管制(修訂)規例(2003 年第 117 號法律公告)在 2002 年 11 月 1 日實施	Shipping and Port Control (Amendment) Regulation 2002 in operation on 1 November 2002	156/2002
2002 年船舶及港口管制(水域的封閉)公告	Shipping and Port Control (Closure of Waters) Notice 2002	105/2002
2002 年第 2 號公告	(No.2) Notice 2002	164/2002
2002 年船舶及港口管制規例(修訂附表 3 及 7)公告	Shipping and Port Control Regulations (Amendment of Third and Seventh Schedules) Notice 2002	123/2002
2002 年海岸公園及海岸保護區 規例	Marine Parks and Marine Reserves Regulation	106/2002
2002 年海岸公園及海岸保護區(修訂) 規例	Marine Parks and Marine Reserves (Amendment) Regulation 2002	182/2002
2002 年海岸公園(指定)令	Marine Parks (Designation) Order	20/2002
2002 年海岸保護區(指定)令	Marine Reserve (Designation) Order	20/2002

附錄 E – 續  
APPENDIX E – Cont' d

法例名稱	Title	法例編號 L.N. No.
商船 (散化規則)規例	Merchant Shipping (BCH Code) Regulations	106/2002
商船 (控制散裝有毒液體物質污染) 規例	Merchant Shipping (Control of Pollution by Noxious Liquid Substances in Bulk) Regulations	106/2002
商船 (國際散化規則)規例	Merchant Shipping (IBC Code) Regulations	106/2002
1987 年商船(船東及其他人士責任)(利率) 令 (LN 13/1987)	Merchant Shipping (Liability of Shipowners and Others) (Rate of Interest) (Hong Kong) Order 1987 (LN 13/1987)	86/2002
1987 年商船(船東及其他人士責任)(利率) (第 2 號) 令 (LN 123/1987)	Merchant Shipping (Liability of Shipowners and Others) (Rate of Interest) (Hong Kong) (No.2) Order 1987 (LN 123/1987)	86/2002
1987 年商船(船東及其他人士責任)(利率) (第 3 號) 令 (LN 368/1987)	Merchant Shipping (Liability of Shipowners and Others) (Rate of Interest) (Hong Kong) (No.3) Order 1987 (LN 368/1987)	86/2002
1988 年商船(船東及其他人士責任)(利率) 令 (LN 139/1988)	Merchant Shipping (Liability of Shipowners and Others) (Rate of Interest) (Hong Kong) Order 1988 (LN 139/1988)	86/2002
1989 年商船(船東及其他人士責任)(利率) 令 (LN 331/1990)	Merchant Shipping (Liability of Shipowners and Others) (Rate of Interest) (Hong Kong) Order 1989 (LN 331/1990)	86/2002
1990 年商船(船東及其他人士責任)(利率) 令 (LN 185/1990)	Merchant Shipping (Liability of Shipowners and Others) (Rate of Interest) (Hong Kong) Order 1990 (LN 185/1990)	86/2002
1991 年商船(船東及其他人士責任)(利率) 令 (LN 304/1991)	Merchant Shipping (Liability of Shipowners and Others) (Rate of Interest) (Hong Kong) Order 1991 (LN 304/1991)	86/2002
1992 年商船(船東及其他人士責任)(利率) 令 (LN 115/1992)	Merchant Shipping (Liability of Shipowners and Others) (Rate of Interest) (Hong Kong) Order 1992 (LN 115/1992)	86/2002
1992 年商船(船東及其他人士責任)(利率) (第 2 號) 令 (LN 333/1992)	Merchant Shipping (Liability of Shipowners and Others) (Rate of Interest) (Hong Kong) (No.2) Order 1992 (LN 333/1992)	86/2002
商船 (防止及控制污染) 規例	Merchant Shipping (Prevention of Oil Pollution) Regulations	106/2002
2002 年商船(安全) (貨船安全設備檢驗) 規例	Merchant Shipping (Safety) (Cargo Ship Safety Equipment Survey) Regulations	106/2002

附錄 E – 續  
APPENDIX E – Cont' d

法例名稱	Title	法例編號 L.N. No.
2002 年商船 (安全) (召集及訓練) 規例	Merchant Shipping (Safety) (Musters and Training) Regulations	106/2002
2002 年商船 (安全) (客船構造及檢驗) (1984 年 9 月 1 日或之後建造的船舶) 規例	Merchant Shipping (Safety) (Passenger Ship Construction and Survey) (Ships Built On or After 1 September 1984) Regulations	106/2002
2002 年商船 (安全) (無線電裝設檢驗) 規例	Merchant Shipping (Safety) (Radio Installations Survey) Regulations	106/2002
領港(費用)令	Pilotage (Dues) Order	234/2002
2002 年港口管制(公共貨物裝卸區) (綜合) 令	Port Control (Public Cargo Working Area) (Consolidation) Order	20 of 2002
1998 年港口管制 (公共貨物裝卸區) (第 6 號) 令 (LN 59/1998)	Port Control (Public Cargo Working Area) (No. 6) Order 1998 (LN 59/1998)	20 of 2002
1998 年港口管制(公共貨物裝卸區) (第 8 號) 令 (LN 61/1998)	Port Control (Public Cargo Working Area) (No. 8) Order 1998 (LN 61/1998)	20 of 2002
1999 年港口管制(公共貨物裝卸區) (第 2 號) 令 (LN 268/1999)	Port Control (Public Cargo Working Area) (No. 2) Order 1999 (LN 268/1999)	20 of 2002
船舶及港口管制規例	Shipping and Port Control Regulations	117,123/2002
2000 年船舶及港口管制 (修訂) (第 3 號) 規例 (LN 141/2000)	Shipping and Port Control (Amendment) (No. 3) Regulation 2000 (LN 141/2000)	106/2002

附錄 E – 續  
APPENDIX E – Cont' d

香港條例  
Ordinances of Hong Kong

法例名稱	Title	法例編號 L.N. No.
海上傾倒物料條例	Dumping at Sea Ordinance	466
商船(本地船隻)條例	Merchant Shipping (Local Vessels) Ordinance	548
商船(防止及控制污染)條例	Merchant Shipping (Prevention and Control of Pollution) Ordinance	413
商船(安全)條例	Merchant Shipping (Safety) Ordinance	369
商船(海員)條例	Merchant Shipping (Seafarers) Ordinance	478
海岸公園條例	Marine Parks Ordinance	476
領港條例	Pilotage Ordinance	84
船舶及港口管制條例	Shipping and Port Control Ordinance	313
商船(限制船東責任)條例	Merchant Shipping (Limitation of Shipowners Liability) Ordinance	434
鍋爐及壓力容器	Boilers and Pressure Vessels	56
港口管制(貨物裝卸區)	Port Control (Cargo Working Areas)	81
1999年船舶及港口管制(修訂)規例	Shipping and Port Control (Amendment) Ordinance 1999	70



附錄 F  
APPENDIX F

2002 年在香港註冊的船舶  
Ships Registered in Hong Kong, 2002

Name of Ship	Ship Type	Gross Tonnage	Join Date	Official No.
UNIQUE BRILLIANCE	BULK CARRIER	88 702	02-JAN-2002	HK-0776
OCEAN EXPORTER	BULK CARRIER	16 978	02-JAN-2002	HK-0768
KANG CHANG	BULK CARRIER	30 003	03-JAN-2002	HK-0782
JIN TAI	BULK CARRIER	38 727	03-JAN-2002	HK-0793
GREAT LUCK 大順	BULK CARRIER	37 663	04-JAN-2002	HK-0785
KOTA HALUS 純城	CONTAINER CARRIER	13 491	07-JAN-2002	HK-0781
BOW DE JIN	CHEMICAL TANKER	6 294	07-JAN-2002	HK-0803
BOW DE SILVER	CHEMICAL TANKER	6 294	08-JAN-2002	HK-0806
PROTEC 普天客	BULK CARRIER	26 718	09-JAN-2002	HK-0796
DILIGENCE CONTAINER 勤士貨櫃輪	CONTAINER CARRIER	6 942	15-JAN-2002	HK-0808
ALBANY SOUND	BULK CARRIER	16 963	15-JAN-2002	HK-0792
SAGA VOYAGER	GENERAL CARGO CARRIER	29 867	18-JAN-2002	HK-0788
KANG SHENG	BULK CARRIER	30 003	21-JAN-2002	HK-0783
LOWLANDS GLORY	BULK CARRIER	86 848	21-JAN-2002	HK-0784
XIANG LING 翔嶺	GENERAL CARGO SHIP	5 106	25-JAN-2002	HK-0809
MOUNT FISHER	BULK CARRIER	16 978	28-JAN-2002	HK-0804
FEDERAL PROGRESS	BULK CARRIER	21 469	29-JAN-2002	HK-0786
BOW DE FENG	CHEMICAL TANKER	6 843	01-FEB-2002	HK-0807
FEDERAL VENTURE	BULK CARRIER	21 469	02-FEB-2002	HK-0787

附錄 F - 續  
APPENDIX F - Cont'd

Name of Ship	Ship Type	Gross Tonnage	Join Date	Official No.
AMPLE GLORY	GENERAL CARGO SHIP	3 977	06-FEB-2002	HK-0811
CHINA TRADER	BULK CARRIER	28 164	11-FEB-2002	HK-0817
TU KING	BULK CARRIER	16 749	23-FEB-2002	HK-0821
MOUNT TRAVERS	BULK CARRIER	16 978	25-FEB-2002	HK-0814
SAGA VIKING	GENERAL CARGO CARRIER	29 867	26-FEB-2002	HK-0805
COLUMBIA 18	MOTOR CARGO VESSEL	263	27-FEB-2002	HK-0827
KANG HING	BULK CARRIER	29 935	01-MAR-2002	HK-0816
SAGA VIKING	GENERAL CARGO CARRIER	29 867	11-MAR-2002	HK-0805
JIN KANG	BULK CARRIER	38 727	11-MAR-2002	HK-0826
ODIN R	SUCTION DREDGER	2 081	12-MAR-2002	HK-0810
KOTA HAPAS	CONTAINER CARRIER	13 491	13-MAR-2002	HK-0815
SEA EMERALD	BULK CARRIER	15 813	18-MAR-2002	HK-0831
RAMIN	BULK CARRIER	32 491	21-MAR-2002	HK-0825
OCEAN PRINCE	BULK CARRIER	30 053	22-MAR-2002	HK-0818
HCH OCEAN	GENERAL CARGO	5 106	25-MAR-2002	HK-0824
TORM AMERICA	GENERAL CARGO	13 651	27-MAR-2002	HK-0832
BOW DE FENG	CHEMICAL TANKER	6 843	28-MAR-2002	HK-0807
GRAND NOBLE 帝貴	CARGO SHIP	4 802	02-APR-2002	HK-0835
KANG LONG	BULK CARRIER	29 935	02-APR-2002	HK-0829
KANG FU	BULK CARRIER	28 613	02-APR-2002	HK-0828
BORA	OIL TANKER	24 252	03-APR-2002	HK-0822
NORDANVIND	PRODUCT TANKER	24 252	03-APR-2002	HK-0823

附錄 F - 續  
APPENDIX F - Cont'd

Name of Ship	Ship Type	Gross Tonnage	Join Date	Official No.
PINE TRUST	GENERAL CARGO	13 519	04-APR-2002	HK-0836
KANG ZHONG	BULK CARRIER	29 145	08-APR-2002	HK-0830
BETIO	BULK CARRIER	23 249	09-APR-2002	HK-0839
HARSTAD	BULK CARRIER	16 798	11-APR-2002	HK-0843
GIANT	BULK CARRIER	16 798	13-APR-2002	HK-0841
STOKMARNES	BULK CARRIER	17 822	16-APR-2002	HK-0846
MARITIME SUZANNE	CHEMICAL AND OIL CARRIER	29 211	16-APR-2002	HK-0789
EN YUAN 恩遠	GENERAL CARGO SHIP	4 403	17-APR-2002	HK-0834
NST CHALLENGE 挑戰輪	BULK CARRIER	16 985	17-APR-2002	HK-0833
KENT	BULK CARRIER	17 825	18-APR-2002	HK-0844
CASHIN	BULK CARRIER	17 825	18-APR-2002	HK-0840
HANYUN NO.2	CARGO SHIP	8 598	22-APR-2002	HK-0610
STICKS	BULK CARRIER	19 728	22-APR-2002	HK-0850
HEBEI PHOENIX 河北吉祥	BULK CARRIER	39 634	26-APR-2002	HK-0856
ASIAN PEGASUS	CONTAINER CARRIER	16 731	28-APR-2002	HK-0851
HENG XIN 恆信	BULK CARRIER	14 536	29-APR-2002	HK-0861
YA JIANG 雅江	OIL TANKER	3 951	29-APR-2002	HK-0862
EDSEL	VEHICLES CARRIER	6 525	30-APR-2002	HK-0849

附錄 F - 續  
APPENDIX F - Cont'd

<b>Name of Ship</b>	<b>Ship Type</b>	<b>Gross Tonnage</b>	<b>Join Date</b>	<b>Official No.</b>
GREAT OLYMPIA 大典	BULK CARRIER	27 176	03-MAY-2002	HK-0819
LONG GROW	GENERAL CARGO SHIP	4 337	03-MAY-2002	HK-0854
HARMON	BULK CARRIER	31 649	03-MAY-2002	HK-0842
NOMAR	BULK CARRIER	31 649	06-MAY-2002	HK-0845
GREENOCK	OIL TANKER	24 252	09-MAY-2002	HK-0775
RAFFLES LIGHT	BULK CARRIER	14 704	10-MAY-2002	HK-0852
HONSHU SILVIA	CHIP CARRIER	28 514	12-MAY-2002	HK-0860
ISLA DE CEDROS	BULK CARRIER	34 405	13-MAY-2002	HK-0855
RAFFLES LIGHT	BULK CARRIER	14 704	13-MAY-2002	HK-0852
HEBEI NO.1 河北領先	BULK CARRIER	39 634	15-MAY-2002	HK-0872
HEBEI FRIENDSHIP 河北友誼	GENERAL CARGO SHIP	10 512	15-MAY-2002	HK-0870
HEBEI EXPRESS 河北發展	BULK CARRIER	39 537	15-MAY-2002	HK-0876
HEBEI LION 河北神威	BULK CARRIER	41 010	15-MAY-2002	HK-0878
HEBEI MERCY 河北好運	GENERAL CARGO SHIP	7 317	15-MAY-2002	HK-0868
HEBEI SUNLIGHT 河北美好	GENERAL CARGO SHIP	9 888	15-MAY-2002	HK-0869
HEBEI PEACE 河北祥和	GENERAL CARGO SHIP	10 512	15-MAY-2002	HK-0871

附錄 F - 續  
APPENDIX F - Cont'd

Name of Ship	Ship Type	Gross Tonnage	Join Date	Official No.
HEBEI HOPE 河北希望	BULK CARRIER	39 743	15-MAY-2002	HK-0873
HEBEI TREASURE 河北幸福	BULK CARRIER	33 186	15-MAY-2002	HK-0874
HEBEI PROGRESS 河北進步	BULK CARRIER	39 633	15-MAY-2002	HK-0875
GHANA STAR	CONTAINER SHIP	18 145	15-MAY-2002	HK-0853
SHINYO ALLIANCE	OIL TANKER	137 746	17-MAY-2002	HK-0848
ISLA DE CEDROS	BULK CARRIER	34 405	21-MAY-2002	HK-0855
HAI LE 海力	TUG	365	21-MAY-2002	HK-0867
KANG YUAN	BULK CARRIER	29 145	29-MAY-2002	HK-0858
SHANTOU 汕頭	TUG	291	29-MAY-2002	HK-0883
TOURAINÉ	LIQUEFIED GAS CARRIER	25 337	29-MAY-2002	HK-0865
L. STAR	OIL/CHEMICAL TANKER	4 509	31-MAY-2002	HK-0864
HAN JIANG 涵江	OIL TANKER	3 951	03-JUN-2002	HK-0881
FU TIAN 福田	GENERAL CARGO SHIP	4 843	07-JUN-2002	HK-0884
SUNTEC 陽天客	BULK/LUMBER	15 278	14-JUN-2002	HK-0887
J. PEACE 吉安	BULK CARRIER	16 766	17-JUN-2002	HK-0863
KANG QIANG	BULK CARRIER	28 613	18-JUN-2002	HK-0859
FLORA DELMAS	CONTAINER SHIP	16 916	18-JUN-2002	HK-0888

附錄 F - 續  
APPENDIX F - Cont'd

Name of Ship	Ship Type	Gross Tonnage	Join Date	Official No.
RHEA	GENERAL CARGO	11 036	21-JUN-2002	HK-0866
SANTA ANA	PRODUCT TANKER	24 252	24-JUN-2002	HK-0775
HEBEI PROSPERITY 河北繁榮	BULK CARRIER	39 538	24-JUN-2002	HK-0877
CRIMSON MARS	CHIP CARRIER	40 360	25-JUN-2002	HK-0880
SANKO PRELUDE	BULK CARRIER	14 147	25-JUN-2002	HK-0894
FRIHETEN	PLEASURE YACHT	27	26-JUN-2002	HK-0898
FABRIC SHIP 飛達	GENERAL CARGO	5 934	26-JUN-2002	HK-0886
JOY VICTORY	BULK CARRIER	16 761	26-JUN-2002	HK-0885
BLUE LAKE 曉湖輪	CONTAINER	3 537	03-JUL-2002	HK-0896
COREY	BULK CARRIER	21 734	05-JUL-2002	HK-0897
FU HAI 福海	GENERAL CARGO	5 241	06-JUL-2002	HK-0904
GUO HO 國皓	OIL TANKER	1 297	08-JUL-2002	HK-0899
KOTA GANTENG	CONTAINER SHIP	28 676	15-JUL-2002	HK-0900
CRIMSON MARS	CHIP CARRIER	40 360	18-JUL-2002	HK-0880
ASIAN EAGLE	CONTAINER CARRIER	9 443	19-JUL-2002	HK-0901
XING HUA 興華	BULK CARRIER	16 699	23-JUL-2002	HK-0906
KOTA GANTENG	CONTAINER SHIP	28 676	24-JUL-2002	HK-0900
THANKS TWENTY	GENERAL CARGO	5 144	25-JUL-2002	HK-0879

附錄 F - 續  
APPENDIX F - Cont'd

Name of Ship	Ship Type	Gross Tonnage	Join Date	Official No.
ENTERPRISE	BULK CARRIER	18 964	31-JUL-2002	HK-0905
ASIAN TIGER	TANKER	132 724	02-AUG-2002	HK-0909
MARITIME VANESSA	CHEMICAL AND OIL CARRIER	29 211	05-AUG-2002	HK-0857
POWER STAR	GENERAL CARGO SHIP	5 540	08-AUG-2002	HK-0882
GREAT SCENERY 大輝	BULK CARRIER	27 176	09-AUG-2002	HK-0820
TOP EXPLORER 鵬發輪	BULK CARRIER	18 036	13-AUG-2002	HK-0895
TAIXING	GENERAL CARGO SHIP	18 207	14-AUG-2002	HK-0919
CHEUNG CHAU	TUG	295	14-AUG-2002	HK-0918
NURI	OIL TANKER	153 427	15-AUG-2002	HK-0910
ASIAN TIGER	TANKER	132 724	15-AUG-2002	HK-0909
TOP PROSPERITY 鵬隆輪	BULK CARRIER	26 094	16-AUG-2002	HK-0914
SAGA SKY	BULK CARRIER	29 381	19-AUG-2002	HK-0917
NEON	OIL TANKER	153 347	22-AUG-2002	HK-0912
RAINBOW JOY	GENERAL CARGO	6 213	27-AUG-2002	HK-0911
TRICHORD SUCCESS	BULK CARRIER	15 884	28-AUG-2002	HK-0927
SEATRANSPORT	OIL TANKER	57 529	29-AUG-2002	HK-0916
HENG FU	GENERAL CARGO SHIP	12 501	04-SEP-2002	HK-0930
NESS	OIL TANKER	153 662	05-SEP-2002	HK-0913

附錄 F - 續  
APPENDIX F - Cont'd

Name of Ship	Ship Type	Gross Tonnage	Join Date	Official No.
ARISTON	BULK CARRIER	73 115	05-SEP-2002	HK-0924
KOTA GEMAR	CONTAINER CARRIER	28 676	09-SEP-2002	HK-0921
TOP WISDOM 鵬智輪	BULK CARRIER	26 094	09-SEP-2002	HK-0932
CENTURY LUCK 世紀好運	GENERAL CARGO SHIP	3 240	12-SEP-2002	HK-0928
NEW RICH 新瑞	GENERAL CARGO SHIP	3 953	12-SEP-2002	HK-0908
JIN PING	BULK CARRIER	28 707	16-SEP-2002	HK-0926
PACIFIC FRONTIER	GENERAL CARGO / MULTI-PURPOSE SHIP	15 899	17-SEP-2002	HK-0931
CENTURY TEAM 世紀團隊	GENERAL CARGO SHIP	2 717	19-SEP-2002	HK-0936
OCEAN PRINCESS	BULK CARRIER	30 053	20-SEP-2002	HK-0838
NORGAS ORINDA	LPG / ETHYLENE / VCM CARRIER	8 720	23-SEP-2002	HK-0893
SHA CHAU	TUG	295	25-SEP-2002	HK-0929
ANELLY 安利	OIL TANKER	1 662	27-SEP-2002	HK-0920
KOTA GEMAR	CONTAINER CARRIER	28 676	27-SEP-2002	HK-0921
ALCINOE	BULK CARRIER	19 602	30-SEP-2002	HK-0935
CATWALK	SAIL CATAMARAN	36	03-OCT-2002	HK-0923
NEW FERRY LXXXI 新輪捌拾壹	HIGH SPEED FERRY	714	03-OCT-2002	HK-0890



附錄 F - 續  
APPENDIX F - Cont'd

Name of Ship	Ship Type	Gross Tonnage	Join Date	Official No.
NEW FERRY LXXXII 新輪捌拾貳	HIGH SPEED FERRY	714	03-OCT-2002	HK-0891
NEW FERRY LXXXIII 新輪捌拾叁	HIGH SPEED FERRY	714	03-OCT-2002	HK-0892
HENG YU	BULK CARRIER	11 323	08-OCT-2002	HK-0922
GABY DELMAS	CONTAINER CARRIER	16 916	08-OCT-2002	HK-0933
EBONI	BULK CARRIER	32 491	10-OCT-2002	HK-0937
BRUGGE VENTURE	LPG TANKER	22 352	16-OCT-2002	HK-0941
FRENCH BAY	CARGO/VEHICLES	10 381	19-OCT-2002	HK-0915
NEW LUCKY 新運	GENERAL/LUMBER CARGO	3 905	21-OCT-2002	HK-0939
MIN FENG 閩峰	CONTAINER SHIP	5 819	23-OCT-2002	HK-0942
LADY BARBARA	TANKER	3 478	25-OCT-2002	HK-0946
NORD VIKING	BULK CARRIER	26 040	30-OCT-2002	HK-0940
SONG LIN WAN 松林灣	OIL TANKER	56 358	01-NOV-2002	HK-0934
MARITIME ROSEMARY	OIL AND CHEMICAL TANKER	29 211	04-NOV-2002	HK-0907
SHUNDE 順德	TUG BOAT	298	04-NOV-2002	HK-0902
SKYTEC	BULK CARRIER	16 368	04-NOV-2002	HK-0943
STENA VENTURE	OIL TANKER	39 272	06-NOV-2002	HK-0938
MILESTONE 里程碑	GENERAL CARGO	6 155	07-NOV-2002	HK-0944

附錄 F - 續  
APPENDIX F - Cont'd

Name of Ship	Ship Type	Gross Tonnage	Join Date	Official No.
ZHONG REN 703 重任 703	BARGE	2 856	13-NOV-2002	HK-0949
SUN SEA 太陽海	BULK CARRIER	34 626	14-NOV-2002	HK-0948
ORIENTAL TIGER	OIL CARRIER	103 168	15-NOV-2002	HK-0945
ALIACMON RIVER	BULK CARRIER	22 147	25-NOV-2002	HK-0963
TIAN SONG FENG 天松峰	BULK CARRIER	39 042	26-NOV-2002	HK-0955
SEA GLORY 海景	GENERAL CARGO	2 826	26-NOV-2002	HK-0967
AP CHAU	TUG	295	28-NOV-2002	HK-0952
AVON	BULK CARRIER	16 722	28-NOV-2002	HK-0951
OLYMPIA	BULK CARRIER	73 119	28-NOV-2002	HK-0925
PLEASE PLEASE ME	BULK CARRIER	17 428	02-DEC-2002	HK-0971
SUN SEA 太陽海	BULK CARRIER	34 626	03-DEC-2002	HK-0948
NEW SUNNY 新虹	GENERAL CARGO	2 822	03-DEC-2002	HK-0956
LONG YU	GENERAL CARGO	10 970	06-DEC-2002	HK-0979
HAI JI	BULK CARRIER	38 639	12-DEC-2002	HK-0980
BELKAID	GENERAL CARGO SHIP	5 615	16-DEC-2002	HK-0972
SHINYO CHALLENGE	BULK CARRIER	18 108	17-DEC-2002	HK-0974
NORGAS NAVIGATOR	LIQUEFIED GAS TANKER	6 848	17-DEC-2002	HK-0958

附錄 F - 續  
APPENDIX F - Cont'd

<b>Name of Ship</b>	<b>Ship Type</b>	<b>Gross Tonnage</b>	<b>Join Date</b>	<b>Official No.</b>
WINTEC	WOODCHIP CARRIER	36 623	19-DEC-2002	HK-0978
BELKAID	GENERAL CARGO SHIP	5 615	20-DEC-2002	HK-0972
NORGAS VOYAGER	LIQUEFIED GAS TANKER	7 173	20-DEC-2002	HK-0959
NORGAS CHIEF	LIQUEFIED GAS TANKER	7 791	20-DEC-2002	HK-0961
NORGAS ENERGY	LIQUEFIED GAS TANKER	6 521	20-DEC-2002	HK-0962
NORGAS PILOT	LIQUEFIED GAS TANKER	5 696	23-DEC-2002	HK-0960
TOP PROGRESS 鵬進輪	BULK CARRIER	18 036	26-DEC-2002	HK-0964
CSCL NAPOLI	CONTAINER SHIP	30 024	30-DEC-2002	HK-0965

註： 如有任何查詢，請致電 2852 4421 海事處船舶註冊處。

Note: Enquiries can be directed to the Shipping Registry of the Marine Department at 2852 4421.

附錄 G  
APPENDIX G

2002 年終止在香港註冊的船舶  
Ships De-registered in Hong Kong, 2002

Name of Ship	Ship Type	Gross Tonnage	Closing Date	Official No.
EURASIAN CHERUB 中成	BULK CARRIER	13 736	09-JAN-2002	HK-0505
SAGA VOYAGER	GENERAL CARGO CARRIER	29 867	18-JAN-2002	HK-0788
DELMAS DURVILLE	DRY CARGO / CONTAINER SHIP	17 210	21-JAN-2002	HK-0270
DYNA MERCURY	BULK CARRIER	90 876	22-JAN-2002	HK-0417
HANDYMARINER	BULK CARRIER	17 677	23-JAN-2002	HK-0483
MAN HONG 8 萬航捌號	CONTAINER SHIP	2 958	01-FEB-2002	HK-0619
DYNA GEMINI	BULK CARRIER	77 298	04-FEB-2002	HK-0253
JI-FUNG	YACHT	174	11-FEB-2002	385179
ASAHISAN	BULK CARRIER	83 658	15-FEB-2002	HK-0322
MELLOW OCEAN	BULK CARRIER	85 590	27-FEB-2002	HK-0335
DELMAS TOURVILLE	DRY CARGO / CONTAINER SHIP	17 280	05-MAR-2002	HK-0296
SAGA VIKING	GENERAL CARGO CARRIER	29 867	11-MAR-2002	HK-0805
JIN CHANG	BULK CARRIER	35 902	18-MAR-2002	HK-0560
JIN XIANG 晉祥	DRY CARGO SHIP	1 586	20-MAR-2002	HK-0798
NEGO KIM	BULK CARRIER	15 832	25-MAR-2002	HK-0146

附錄 G – 續  
APPENDIX G – Cont' d

Name of Ship	Ship Type	Gross Tonnage	Closing Date	Official No.
CHANG XIANG 昌祥	DRY CARGO SHIP	1 427	28-MAR-2002	HK-0797
BOW DE FENG	CHEMICAL TANKER	6 843	28-MAR-2002	HK-0807
APTMARINER	BULK CARRIER	17 677	28-MAR-2002	HK-0472
MUN KIM	BULK CARRIER	15 834	04-APR-2002	HK-0137
WORLD ACTION	BULK CARRIER	77 211	12-APR-2002	HK-0198
HANYUN NO.1	CARGO SHIP	13 507	19-APR-2002	HK-0607
HANYUN NO.2	CARGO SHIP	8 598	22-APR-2002	HK-0610
HANYUN NO.3	CARGO SHIP	8 598	30-APR-2002	HK-0611
RAFFLES LIGHT	BULK CARRIER	14 704	13-MAY-2002	HK-0852
P&O NEDLLOYD TAURANGA	CONTAINER CARRIER	25 093	16-MAY-2002	HK-0029
LAM TONG	TUG	214	16-MAY-2002	HK-0261
TUNG LUNG	TUG	214	16-MAY-2002	HK-0262
ISLA DE CEDROS	BULK CARRIER	34 405	21-MAY-2002	HK-0855
PRETTY SOURCE 麗源	BULK CARRIER	27 566	24-MAY-2002	HK-0548
HANYUN NO.2	CARGO SHIP	8 598	31-MAY-2002	HK-0610
MSC FLAMINIA	CONTAINER SHIP	75 590	31-MAY-2002	HK-0753
AMPLE GLORY	GENERAL CARGO SHIP	3 977	04-JUN-2002	HK-0811
MAN HONG	PASSENGER FERRY	756.77	04-JUN-2002	372861
MAN WO	STEEL HULL/GRP SUPERSTRUCTURE FERRY	518.91	04-JUN-2002	384793

附錄 G – 續  
APPENDIX G – Cont' d

Name of Ship	Ship Type	Gross Tonnage	Closing Date	Official No.
PRETTY RUBY 麗寶	BULK CARRIER	27 566	19-JUN-2002	HK-0547
MSC ILONA	CONTAINER SHIP	75 590	21-JUN-2002	HK-0760
GREENOCK	OIL TANKER	24 252	24-JUN-2002	HK-0775
JIN FENG 金豐	BULK CARRIER	23 671	28-JUN-2002	HK-0090
MONA	OIL TANKER	26 450	28-JUN-2002	HK-0727
EASTERN FOREST	BULK/LUMBER CARRIER	16 725	09-JUL-2002	HK-0436
BILLY 彪力	PLEASURE YACHT	38	10-JUL-2002	HK-0615
ST. CLOUD	BULK CARRIER	12 539	16-JUL-2002	708319
CRIMSON MARS	CHIP CARRIER	40 360	18-JUL-2002	HK-0880
KOTA GANTENG	CONTAINER SHIP	28 676	24-JUL-2002	HK-0900
ACORES	HYDROFOIL PASSENGER	267	09-AUG-2002	384766
MANY NO.2	TUG	119	12-AUG-2002	HK-0419
TORM AMERICA	GENERAL CARGO	13 651	12-AUG-2002	HK-0832
ASIAN TIGER	TANKER	132 724	15-AUG-2002	HK-0909
ST. AUBIN	BULK CARRIER	12 539	15-AUG-2002	HK-0498
ASIAN PEGASUS	CONTAINER CARRIER	16 731	27-AUG-2002	HK-0851
TAI KEE NO.6	WATER BOAT	190	29-AUG-2002	154036
GUO WEI 國威	HARBOUR TANKER	452	30-AUG-2002	315072

附錄 G – 續  
APPENDIX G – Cont' d

Name of Ship	Ship Type	Gross Tonnage	Closing Date	Official No.
TAP MUN	TUG	268	16-SEP-2002	706798
PEARL ACE	CAR CARRIER	45 796	20-SEP-2002	HK-0179
KOTA GEMAR	CONTAINER CARRIER	28 676	27-SEP-2002	HK-0921
VIVALDI	PLEASURE YACHT	12	15-OCT-2002	HK-0106
MINERAL SAKURA	BULK CARRIER	87 407	17-OCT-2002	HK-0597
BUTE	CARGO SHIP	12 815	18-OCT-2002	HK-0672
ST. CROIX	BULK CARRIER	12 516	22-OCT-2002	HK-0487
AUSTRALIA CHALLENGE	YACHT	15	23-OCT-2002	HK-0518
NEW FOREST	BULK CARRIER	16 725	24-OCT-2002	HK-0485
NAVIOS BULKER	BULK/ORE CARRIER	37 271	29-OCT-2002	702367
NEGO LOMBOK	BULK CARRIER	19 864	25-NOV-2002	HK-0497
DYNA CAROWAY	BULK CARRIER	79 855	25-NOV-2002	HK-0263
VIRGINIE VENTURE	BULK CARRIER	86 600	29-NOV-2002	HK-0429
SKYSCRAPER NO. 1	DUMB CEMENT BARGE	604	02-DEC-2002	708793
MAN LOONG	STEEL HULL&GRP SUPERSTRUCTURE FERRY	433	02-DEC-2002	372863
MAN KUNG	DOUBLE ENDED PASS. VEH.FERRY	1 170	02-DEC-2002	356526
SUN SEA 太陽海	BULK CARRIER	34 626	03-DEC-2002	HK-0948
CHRISTIANE SCHULTE	CONTAINER SHIP	26 582	09-DEC-2002	HK-0719
NOLOWATI	OIL/CHEMICAL CARRIER	2 534	17-DEC-2002	HK-0443

附錄 G – 續  
APPENDIX G – Cont' d

<b>Name of Ship</b>	<b>Ship Type</b>	<b>Gross Tonnage</b>	<b>Closing Date</b>	<b>Official No.</b>
BELKAID	GENERAL CARGO SHIP	5 615	20-DEC-2002	HK-0972
NITRO	PLEASURE YACHT	17	20-DEC-2002	HK-0665
SEA POWER	CHEMICAL TANKER	5 266	24-DEC-2002	HK-0539
F.E.C.C. 1	CEMENT CARRIER	526	24-DEC-2002	399891

註: 如有任何查詢, 請致電 2852 4421 海事處船舶註冊處。  
Note: Enquiries can be directed to the Shipping Registry of the Marine Department at 2852 4421.



附錄 H  
APPENDIX H

2002年輔航設備  
Aids to Navigation, 2002

I.	使用中 IN USE (as at 31.12.2002)	燈浮標	Lighted Buoy	118
		燈航標	Lighted Beacon	365
		雷達信標	Racon	1
		霧角	Fog Horn	7

II. 本年改進的輔航裝置  
AIDS REPROVISIONED DURING THE YEAR

1. 北丫碼頭  
北丫碼頭 Pak A Pier  
- 為配合燈塔重修安排，整套航標燈系統曾經拆回工場進行檢修和調校。該燈並於1月期間換上全新現代化器材，用以提高航標的可靠性。  
- The lighting equipment had been returned to workshop for overhaul following the rehabilitation of beacon structure. The light was then upgraded with modern equipment to increase the reliability of beacon in January.
2. 土瓜灣 1  
To Kwa Wan 1  
- 該燈於1月期間換上全新現代化器材，用以提高其可靠性。  
- The light was replaced with modern equipment for higher reliability in January.
3. 磡頭碼頭  
San Tau Pier  
- 為配合燈塔重修安排，整套航標燈系統曾經拆回工場進行檢修和調校。該燈並於1月期間換上全新現代化器材，用以提高航標的可靠性。  
- The lighting equipment had been returned to workshop for overhaul following the rehabilitation of beacon structure. The light was then upgraded with modern equipment to increase the reliability of beacon in January.
4. 沙螺灣渡輪碼頭  
Sha Lo Wan Ferry Pier  
- 為配合燈塔重修安排，整套航標燈系統曾經拆回工場進行檢修和調校。該燈並於1月期間換上全新現代化器材，用以提高航標的可靠性。  
- The lighting equipment had been returned to workshop for overhaul following the rehabilitation of beacon structure. The light was then upgraded with modern equipment to increase the reliability of beacon in January.
5. 馬灣碼頭  
Ma Wan Pier  
- 該燈於1月期間換上全新現代化器材，用以提高光達距離。  
- The light was upgraded with modern equipment for better luminous range in January.
6. 南堂尾  
Tathong Point  
- 該燈於1月期間更換所有太陽能電池，用以提高航標的可靠性。  
- All the solar batteries were renewed in order to increase the reliability of the beacon in January.
7. 橫瀾  
Waglan  
- 該燈於1月期間更換所有太陽能電池，用以提高航標的可靠性。  
- All the solar batteries were renewed in order to increase the reliability of the beacon in January.

附錄 H - 續  
APPENDIX H (Cont'd)

- |  |  |
|--|--|
| 8. 燈籠洲<br>Tang Lung Chau                 | - 該燈於 1 月期間更換所有太陽能電池，用以提高航標的可靠性。<br>- All the solar batteries were renewed in order to increase the reliability of the beacon in January.  |
| 9. 筲箕灣 E<br>Shau Kei Wan E               | - 為配合燈塔重修安排，整套航標燈系統曾經拆回工場進行檢修和調校。該燈並於 2 月期間換上全新現代化器材，用以提高航標的可靠性。<br>- The lighting equipment had been returned to workshop for overhaul following the rehabilitation of beacon structure. The light was then upgraded with modern equipment to increase the reliability of beacon in February. |
| 10. 西流港碼頭<br>Sai Lau Kong Pier           | - 為配合燈塔重修安排，整套航標燈系統曾經拆回工場進行檢修和調校。該燈並於 3 月期間換上全新現代化器材，用以提高航標的可靠性。<br>- The lighting equipment had been returned to workshop for overhaul following the rehabilitation of beacon structure. The light was then upgraded with modern equipment to increase the reliability of beacon in March.    |
| 11. 海下碼頭<br>Hoi Ha Pier                  | - 為配合燈塔重修安排，整套航標燈系統曾經拆回工場進行檢修和調校。該燈並於 4 月期間換上全新現代化器材，用以提高航標的可靠性。<br>- The lighting equipment had been returned to workshop for overhaul following the rehabilitation of beacon structure. The light was then upgraded with modern equipment to increase the reliability of beacon in April.    |
| 12. 北小鴉洲<br>North Siu A Chau             | - 該燈於 4 月期間換上全新現代化器材，用以提高其可靠性。<br>- The light was replaced with modern equipment for higher reliability in April.  |
| 13. 南堂尾<br>Tathong Point                 | - 該燈塔的霧號系統於 4 月期間換上全新現代化器材，用以提高霧號的可靠性。<br>- The fog horn system was replaced with modern equipment for higher reliability in April.  |
| 14. 大欖水警碼頭<br>Tai Lam Marine Police Pier | - 為配合燈塔重修安排，整套航標燈系統曾經拆回工場進行檢修和調校。該燈並於 4 月期間換上全新現代化器材，用以提高航標的可靠性。<br>- The lighting equipment had been returned to workshop for overhaul following the rehabilitation of beacon structure. The light was then upgraded with modern equipment to increase the reliability of beacon in April.    |
| 15. 北石鼓洲<br>North Shek Kwu Chau          | - 該燈於 4 月期間更換所有太陽能電池，用以提高航標的可靠性。<br>- All the solar batteries were renewed in order to increase the reliability of the beacon in April.  |
| 16. 鳳坑碼頭<br>Fung Hang Pier               | - 該燈於 5 月期間換上全新現代化器材，用以提高其可靠性。<br>- The light was replaced with modern equipment for higher reliability in May.  |
| 17. 筲箕灣 D<br>Shau Kei Wan D              | - 該燈於 5 月期間換上全新現代化器材，用以提高其可靠性。<br>- The light was replaced with modern equipment for higher reliability in May.  |

附錄 H - 續  
APPENDIX H (Cont'd)

18. 火藥洲  
Magazine Island  
- 該燈於 5 月期間換上全新現代化器材，用以提高其可靠性。  
- The light was replaced with modern equipment for higher reliability in May.
19. 沙螺灣碼頭  
Sha Lo Wan Pier  
- 該燈於 5 月期間換上全新現代化器材，用以提高光達距離。  
- The light was upgraded with modern equipment for better luminous range in May.
20. 大浪灣碼頭  
Tai Long Wan Pier  
- 該燈於 5 月期間換上全新現代化器材，用以提高光達距離。  
- The light was upgraded with modern equipment for better luminous range in May.
21. 大排咀碼頭  
Tai Pai Tsui Pier  
- 該燈於 5 月期間換上全新現代化器材，用以提高光達距離。  
- The light was upgraded with modern equipment for better luminous range in May.
22. 蛋家灣碼頭  
Tan Ka Wan Pier  
- 該燈於 6 月期間換上全新現代化器材，用以提高光達距離。  
- The light was upgraded with modern equipment for better luminous range in June.
23. 布袋澳碼頭  
Po Toi O Pier  
- 該燈於 6 月期間換上全新現代化器材，用以提高光達距離。  
- The light was upgraded with modern equipment for better luminous range in June.
24. 油街碼頭  
Oil Street Pier  
- 該燈於 6 月期間換上全新現代化器材，用以提高其可靠性。  
- The light was replaced with modern equipment for higher reliability in June.
25. 三家村 2  
Sam Ka Tsuen 2  
- 為配合燈塔重修安排，整套航標燈系統曾經拆回工場進行檢修和調校。該燈並於 6 月期間換上全新現代化器材，用以提高航標的可靠性。  
- The lighting equipment had been returned to workshop for overhaul following the rehabilitation of beacon structure. The light was then upgraded with modern equipment to increase the reliability of beacon in June.
26. 長洲碼頭  
Cheung Chau Pier  
- 該燈於 6 月期間換上全新現代化器材，用以提高其可靠性。  
- The light was replaced with modern equipment for higher reliability in June.
27. 土瓜灣 4  
To Kwa Wan 4  
- 該燈於 6 月期間換上全新現代化器材，用以提高其可靠性。  
- The light was replaced with modern equipment for higher reliability in June.
28. 小鴉洲村碼頭  
Siu A Chau Tsuen Pier  
- 該燈於 6 月期間換上全新現代化器材，用以提高光達距離。  
- The light was upgraded with modern equipment for better luminous range in June.
29. 白沙灣碼頭  
Pak Sha Wan Pier  
- 該燈於 6 月期間換上全新現代化器材，用以提高光達距離。  
- The light was upgraded with modern equipment for better luminous range in June.
30. 醉酒灣  
Rambler Channel  
- 該燈於 6 月期間更換所有太陽能電池，用以提高航標的可靠性。  
- All the solar batteries were renewed in order to increase the reliability of the beacon in June.

附錄 H - 續  
APPENDIX H (Cont' d)

- |   |   |
|---|---|
| 31. 平洲碼頭<br>Ping Chau Pier                      | - 該燈於 7 月期間換上全新現代化器材，用以提高光達距離。<br>- The light was upgraded with modern equipment for better luminous range in July.   |
| 32. 北交椅洲<br>North Kau Yi Chau                   | - 該燈於 7 月期間更換所有太陽能電池，用以提高航標的可靠性。<br>- All the solar batteries were renewed in order to increase the reliability of the beacon in July.  |
| 33. 飯甌洲<br>Fan Tsang Chau                       | - 該燈於 7 月期間更換所有太陽能電池，用以提高航標的可靠性。<br>- All the solar batteries were renewed in order to increase the reliability of the beacon in July.  |
| 34. 塔門漁民村碼頭<br>Tap Mun Fisherman's Village Pier | - 該燈於 8 月期間換上全新現代化器材，用以提高光達距離。<br>- The light was upgraded with modern equipment for better luminous range in August.   |
| 35. 爛角咀發電廠<br>Black Point Power Station         | - 該燈於 8 月期間更換所有太陽能電池，用以提高航標的可靠性。<br>- All the solar batteries were renewed in order to increase the reliability of the beacon in August.  |
| 36. 鯉魚門<br>Lei Yue Mun                          | - 為配合燈塔重修安排，整套航標燈系統曾經拆回工場進行檢修和調校。該燈並於 8 月期間換上全新現代化器材，用以提高航標的可靠性。<br>- The lighting equipment had been returned to workshop for overhaul following the rehabilitation of beacon structure. The light was then upgraded with modern equipment to increase the reliability of beacon in August.    |
| 37. 大鴉洲<br>Tai A Chau                           | - 該燈於 8 月期間更換所有太陽能電池，用以提高航標的可靠性。<br>- All the solar batteries were renewed in order to increase the reliability of the beacon in August.  |
| 38. 吉澳碼頭<br>Kat O Pier                          | - 為配合燈塔重修安排，整套航標燈系統曾經拆回工場進行檢修和調校。該燈並於 9 月期間換上全新現代化器材，用以提高航標的可靠性。<br>- The lighting equipment had been returned to workshop for overhaul following the rehabilitation of beacon structure. The light was then upgraded with modern equipment to increase the reliability of beacon in September. |
| 39. 龍鼓洲<br>Lung Kwu Chau                        | - 該燈於 9 月期間換上全新現代化器材，用以提高其可靠性。<br>- The light was replaced with modern equipment for higher reliability in September.   |
| 40. 馬仔排<br>Ma Tsai Pai                          | - 該燈於 9 月期間換上全新現代化器材，用以提高光達距離。<br>- The light was upgraded with modern equipment for better luminous range in September.  |
| 41. 筲箕灣 C<br>Shau Kei Wan C                     | - 該燈於 9 月期間換上全新現代化器材，用以提高其可靠性。<br>- The light was replaced with modern equipment for higher reliability in September.   |

附錄 H - 續  
APPENDIX H (Cont'd)

42. 筲箕灣 D  
Shau Kei Wan D
- 該燈於 9 月期間換上全新現代化器材，用以提高其可靠性。  
- The light was replaced with modern equipment for higher reliability in September.
43. 稔樹灣碼頭  
Nim Shue Wan Pier
- 為配合燈塔重修安排，整套航標燈系統曾經拆回工場進行檢修和調校。該燈並於 10 月期間換上全新現代化器材，用以提高航標的可靠性。  
- The lighting equipment had been returned to workshop for overhaul following the rehabilitation of beacon structure. The light was then upgraded with modern equipment to increase the reliability of beacon in October.
44. 模達灣碼頭  
Mo Tat Wan Pier
- 該燈於 10 月期間換上全新現代化器材，用以提高光達距離。  
- The light was upgraded with modern equipment for better luminous range in October.
45. 模達灣新碼頭  
Mo Tat Wan New Pier
- 該燈於 10 月期間換上全新現代化器材，用以提高光達距離。  
- The light was upgraded with modern equipment for better luminous range in October.
46. 青洲  
Green Island
- 該燈於 10 月期間換上全新太陽能系統，用以提高航標的可靠性。  
- The light was solarized to increase the reliability of the beacon in October.
47. 醉酒灣南 1  
Rambler Channel South 1
- 該燈的太陽能發電板於 10 月期間加強，用以提高航標的可靠性。  
- The nos. of solar panel were increased to enhance the reliability of the beacon in October.
48. 醉酒灣南 2  
Rambler Channel South 2
- 該燈的太陽能發電板於 10 月期間加強，用以提高航標的可靠性。  
- The nos. of solar panel were increased to enhance the reliability of the beacon in October.
49. 散石灣碼頭  
San Shek Wan Pier
- 該燈於 10 月期間換上全新現代化器材，用以提高光達距離。  
- The light was upgraded with modern equipment for better luminous range in October.
50. 筲箕灣 A  
Shau Kei Wan A
- 該燈於 10 月期間換上全新現代化器材，用以提高其可靠性。  
- The light was replaced with modern equipment for higher reliability in October.
51. 筲箕灣 B  
Shau Kei Wan B
- 該燈於 10 月期間換上全新現代化器材，用以提高其可靠性。  
- The light was replaced with modern equipment for higher reliability in October.
52. 半山石  
Pun Shan Shek
- 該燈於 11 月期間更換所有太陽能電池，用以提高航標的可靠性。  
- All the solar batteries were renewed in order to increase the reliability of the beacon in November.
53. 索罟灣碼頭  
Sok Kwu Wan Pier
- 該燈於 11 月期間換上全新現代化器材，用以提高光達距離。  
- The light was upgraded with modern equipment for better luminous range in November.

附錄 H - 續  
APPENDIX H (Cont'd)

54. 汀九橋臺 1  
Ting Kau Bridge Pier 1
- 該燈於 11 月期間換上全新現代化器材，用以提高其可靠性。  
- The light was replaced with modern equipment for higher reliability in November.
55. 三家村 1  
Sam Ka Tsuen 1
- 該燈於 11 月期間換上全新現代化器材，用以提高光達距離。  
- The light was upgraded with modern equipment for better luminous range in November.
56. 哥連臣角  
Cape Collinson
- 該燈於 11 月期間換上全新現代化器材，用以提高光達距離。  
- The light was upgraded with modern equipment for better luminous range in November.
57. 堅尼地城東  
Kennedy Town Dolphin E
- 該燈於 12 月期間換上全新太陽能系統，用以提高航標的可靠性。  
- The light was solarized to increase the reliability of the beacon in December.
58. 堅尼地城西  
Kennedy Town Dolphin W
- 該燈於 12 月期間換上全新太陽能系統，用以提高航標的可靠性。  
- The light was solarized to increase the reliability of the beacon in December.
59. 汀九橋臺 2  
Ting Kau Bridge Pier 2
- 該燈於 12 月期間換上全新太陽能系統，用以提高航標的可靠性。  
- The light was solarized to increase the reliability of the beacon in December.
60. 黃竹角  
Wong Chu Kok
- 該燈於 12 月期間更換所有太陽能電池，用以提高航標的可靠性。  
- All the solar batteries were renewed in order to increase the reliability of the beacon in December.

III. 本年新設的輔航裝置  
NEW AIDS ESTABLISHED DURING THE YEAR

1. 釣魚灣碼頭  
Anglers Beach Pier
- 一個以太陽能操作的新燈航標於 3 月 12 日設立，用以標示釣魚灣碼頭。  
- A solar power operated light was established to mark the Anglers Beach Pier on 12-3-02.
2. 長洲西灣碼頭  
Cheung Chau Sai Wan Pier
- 一個太陽能操作的新燈標於 7 月 17 日設立在長洲西灣碼頭。  
- A solar power operated light was established to mark the Cheung Chau Sai Wan Pier on 17-7-02.
3. 聖士提反灣碼頭  
St. Stephen's Beach Pier
- 一個以太陽能操作的新燈航標於 8 月 16 日設立，用以標示聖士提反灣碼頭。  
- A solar power operated light was established to mark the St. Stephen's Beach Pier on 16-8-02.
4. 氣象 2  
Weather 2
- 一個新的燈浮標於 8 月 16 日設立在香港國際機場南面跑道以西海面。  
- A new lighted buoy was established on 16-8-02 at a position to the west of the Hong Kong International Airport's southern runway.
5. 碇泊泡 A74  
Mooring Buoy A74
- 一個新的燈浮標於 9 月 2 日設立。  
- A new lighted buoy was established on 2-9-02.

附錄 H - 續  
APPENDIX H (Cont'd)

- |                                   |   |
|-----------------------------------|---|
| 6. 碇泊泡 A78<br>Mooring Buoy A78    | - 一個新的燈浮標於 9 月 9 日設立。<br>- A new lighted buoy was established on 9-9-02.  |
| 7. 索罟灣新碼頭<br>Sok Kwu Wan New Pier | - 一個太陽能操作的新燈標於 9 月 6 日設立在索罟灣新碼頭。<br>- A solar power operated light was established to mark the Sok Kwu Wan New Pier on 6-9-02.        |
| 8. 大廟灣碼頭<br>Joss House Bay Pier   | - 一個以太陽能操作的新燈航標於 11 月 1 日設立,用以標示大廟灣碼頭<br>- A solar power operated light was established to mark the Joss House Bay Pier on 1-11-02.   |
| 9. 喜靈洲碼頭<br>Hei Ling Chau Pier    | - 一個以太陽能操作的新燈航標於 11 月 22 日設立,用以標示喜靈洲碼頭。<br>- A solar power operated light was established to mark the Hei Ling Chau Pier on 22-11-02. |

IV. 本年拆除的輔航裝置

AIDS DISCONTINUED DURING THE YEAR

- |                                 |   |
|---------------------------------|---|
| 1. 打水灣碼頭<br>Ta Shui Wan Pier    | - 這個燈航標於 4 月 12 日永久終止服務。<br>- The light was permanently withdrawn from service on 12-4-02.          |
| 2. 葵涌 2<br>KC 2                 | - 這個燈浮標於 6 月 14 日永久終止服務。<br>- The lighted buoy was permanently withdrawn from service on 14-6-02.   |
| 3. 南堂村碼頭<br>Nam Tong Tsuen Pier | - 這個燈航標於 7 月 12 日永久終止服務。<br>- The light was permanently withdrawn from service on 12-7-02.          |
| 4. 碇泊泡 A41<br>Mooring Buoy A41  | - 這個燈浮標於 9 月 2 日永久終止服務。<br>- The lighted buoy was permanently withdrawn from service on 2-9-02.     |
| 5. 碇泊泡 A45<br>Mooring Buoy A45  | - 這個燈浮標於 9 月 9 日永久終止服務。<br>- The lighted buoy was permanently withdrawn from service on 9-9-02.     |
| 6. 水泥<br>Cement                 | - 這個燈浮標於 10 月 11 日永久終止服務。<br>- The lighted buoy was permanently withdrawn from service on 11-10-02. |
| 7. 水泥 1<br>Cement 1             | - 這個燈浮標於 10 月 11 日永久終止服務。<br>- The lighted buoy was permanently withdrawn from service on 11-10-02. |
| 8. 水泥 2<br>Cement 2             | - 這個燈浮標於 10 月 11 日永久終止服務。<br>- The lighted buoy was permanently withdrawn from service on 11-10-02. |

附錄 H - 續  
APPENDIX H (Cont'd)

V. 本年遭損毀的輔航裝置

AIDS DAMAGED DURING THE YEAR

1. 維多利亞  
Victoria  
- 此燈浮標於 1 月期間遭損毀，航標燈熄滅。  
- The lighted buoy was reported damaged and unlit in January.
2. 碇泊泡 A76  
Mooring Buoy A76  
- 此燈浮標於 1 月期間遭損毀，航標燈熄滅。  
- The lighted buoy was reported damaged and unlit in January.
3. 筲箕灣 D  
Shau Kei Wan D  
- 此燈航標於 3 月期間遭損毀，航標燈熄滅。  
- The light was reported damaged and unlit in March.
4. 青山 7  
C P 7  
- 此燈浮標於 3 月期間遭損毀，航標燈熄滅。  
- The lighted buoy was reported damaged and unlit in March.
5. 青衣西  
Tsing Yi West  
- 此燈浮標於 3 月期間熄滅，其後在現場發現此燈浮標的部分設備被切斷兼失去。  
- The lighted buoy was reported unlit and subsequently found part of the equipment sheared off and lost in March.
6. 碇泊泡 A17  
Mooring Buoy A17  
- 此燈浮標於 3 月期間遭損毀，航標燈熄滅。  
- The lighted buoy was reported damaged and unlit in March.
7. 北長洲石西北  
Adamasta Rock NW  
- 此燈浮標於 4 月期間遭損毀，航標燈熄滅。  
- The lighted buoy was reported damaged and unlit in April.
8. 青山 3  
C P 3  
- 此燈浮標於 4 月期間遭損毀，航標燈熄滅。  
- The lighted buoy was reported damaged and unlit in April.
9. 藍塘 1  
TCS1  
- 此燈浮標於 4 月期間遭損毀，航標燈熄滅。  
- The lighted buoy was reported damaged and unlit in April.
10. 北航 4  
Northern 4  
- 此燈浮標於 4 月及 6 月期間遭損毀，航標燈熄滅。  
- The lighted buoy was reported damaged and unlit in April and June.
11. 喜靈  
Hei Ling  
- 此燈浮標於 5 月期間遭損毀，航標燈熄滅。  
- The lighted buoy was reported damaged and unlit in May.
12. 南丫電力 6  
P 6  
- 此燈浮標於 5 月期間遭損毀，航標燈熄滅。  
- The lighted buoy was reported damaged and unlit in May.
13. 碇泊泡 A70  
Mooring Buoy A70  
- 此燈浮標於 6 月期間熄滅，其後在現場發現此燈浮標的部分設備被切斷兼失去。  
- The lighted buoy was reported unlit and subsequently found part of the equipment sheared off and lost in June.



附錄 H - 續  
APPENDIX H (Cont'd)

- |                                 |  |
|---------------------------------|--|
| 14. 藍塘 4<br>TCS 4               | - 此燈浮標於 6 月期間遭損毀，航標燈熄滅。<br>- The lighted buoy was reported damaged and unlit in June.  |
| 15. 平洲 D<br>PC D                | - 此燈浮標於 7 月期間遭損毀，航標燈熄滅。<br>- The lighted buoy was reported damaged and unlit in July.  |
| 16. 油麻地 1<br>Y M T 1            | - 此燈浮標於 7 月期間遭損毀，航標燈熄滅。<br>- The lighted buoy was reported damaged and unlit in July.  |
| 17. 青山 6<br>C P 6               | - 此燈浮標於 7 月期間熄滅，其後在現場發現此燈浮標的部分設備被切斷兼失去。<br>- The lighted buoy was reported unlit and subsequently found part of the equipment sheared off and lost in July.      |
| 18. 北航 3<br>Northern 3          | - 此燈浮標於 8 月及 12 月期間遭損毀，航標燈熄滅。<br>- The lighted buoy was reported damaged and unlit in August and December.   |
| 19. 東博寮 1<br>L C S 1            | - 此燈浮標於 9 月期間熄滅，其後在現場發現此燈浮標的部分設備被切斷兼失去。<br>- The lighted buoy was reported unlit and subsequently found part of the equipment sheared off and lost in September. |
| 20. 青山 8<br>C P 8               | - 此燈浮標於 10 月期間遭損毀，航標燈熄滅。<br>- The lighted buoy was reported damaged and unlit in October.  |
| 21. 碇泊泡 A74<br>Mooring Buoy A74 | - 此燈浮標於 10 月期間遭損毀，航標燈熄滅。<br>- The lighted buoy was reported damaged and unlit in October.  |
| 22. 石鼓洲<br>Shek Kwu Chau        | - 此燈浮標於 10 月期間熄滅，其後在現場發現此燈浮標的部分設備被切斷兼失去。<br>- The lighted buoy was reported unlit and subsequently found part of the equipment sheared off and lost in October.  |
| 23. 碇泊泡 A46<br>Mooring Buoy A46 | - 此燈浮標於 12 月期間遭損毀，航標燈熄滅。<br>- The lighted buoy was reported damaged and unlit in December.   |

附錄 H - 續  
APPENDIX H (Cont'd)

VI. 工場員工與輔航燈比例

RATIO OF WORKSHOP STAFF TO AIDS

年份 Year	員工 Staff		輔航燈 Aids		比例 Ratio
		(%)		(%)	
1989	31	(+10.7)	307	(-2.2)	9.9
1990	34	(+9.7)	319	(+3.9)	9.4
1991	34	(0.0)	326	(+2.2)	9.6
1992	34	(0.0)	327	(+0.3)	9.6
1993	40	(+17.6)	356	(+8.9)	8.9
1994	40	(0.0)	375	(+5.3)	9.4
1995	37	(-7.5)	379	(+1.1)	10.2
1996	36	(-2.7)	380	(+0.3)	10.6
1997	32	(-11.1)	395	(+3.9)	12.3
1998	29	(-9.4)	432	(+9.4)	14.9
1999	27	(-6.9)	463	(+7.2)	17.1
2000	27	(0.0)	468	(+1.1)	17.3
2001	25	(-7.4)	482	(+3.0)	19.3
2002	27	(8.0)	483	(+0.2)	17.9

註釋: ( ) % 與去年比較

Note: ( ) % changes over the preceding year