

## 舉報海上亂拋垃圾 Report Marine Littering

可致電政府熱線：**1823**

Please call the Government hotline:



舉報海上棄置垃圾或作出投訴須提供的資料：

Information required for reporting marine littering and making complaints about marine refuse:

The diagram shows a black boat labeled 'Litter Bug' with a person on deck. Callouts point to various information fields:

- 運作牌照號碼 (Operating Licence Number) - A\*\*\*3
- 日期及時間 (Date & Time)
- 垃圾資料 (如種類、數量等) (Details of Refuse (type, quantity, etc.))
- 船隻名稱 (Name of Vessel)
- 詳細地點 (Details of Location)
- 舉報人資料及聯絡方法 (Details of informant & Contact Information)

## 相關法例 Related Legislation

根據《簡易程序治罪條例》，任何人無合法權限或解釋而在香港水域將廢物棄置，或導致或准許他人將廢物棄置，可處罰款一萬元及監禁六個月。如上述罪行是從任何船隻、地方或處所發生的，則該船隻的船東或船長，或該地方或處所或其中發生罪行的部分的所有人或佔用人，即屬犯罪，可處罰款五萬元及監禁一年。

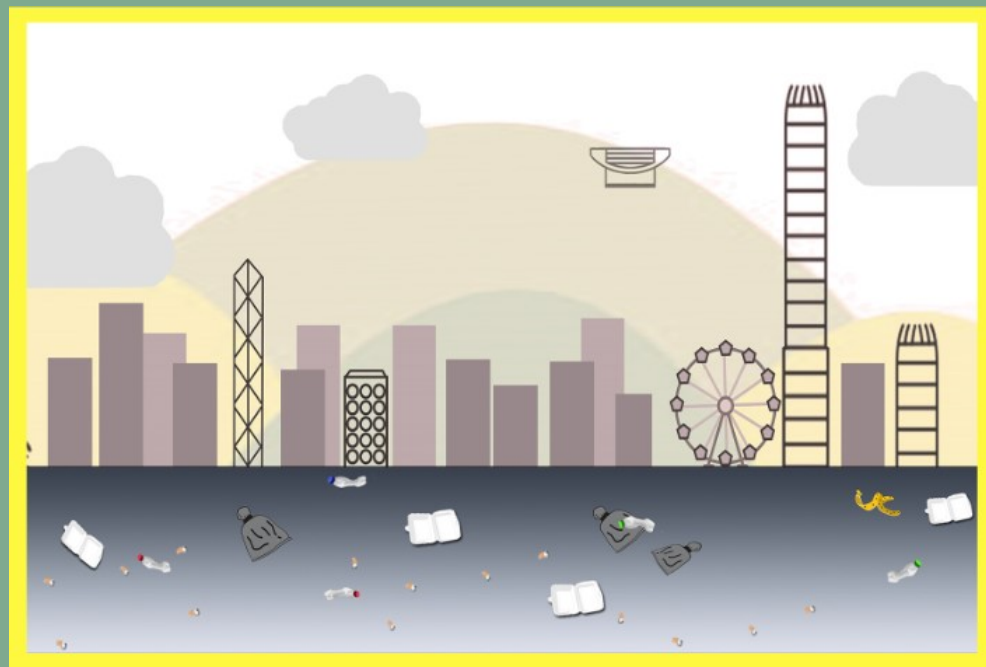
According to the Summary Offences Ordinance, any person who without lawful authority or excuse deposits, or causes or permits to be deposited any litter into the waters of Hong Kong, is liable to a fine of \$10,000 and to imprisonment for 6 months. Where the offence is committed from any vessel, or from any place or premises, the owner or master of the vessel or the proprietor or occupier of the place or premises, or the part thereof from which the offence was committed shall be guilty of an offence and liable to a fine of \$50,000 and to imprisonment for 1 year.

根據《定額罰款(公眾地方潔淨及阻礙)條例》，海上棄置廢物的定額罰款為三千元。

According to the Fixed Penalty (Public Cleanliness and Obstruction) Ordinance, a person who commits marine littering is liable to a fixed penalty of \$3,000.

# 你我同心協力 保持海港潔淨

We are one in keeping our harbour clean



香港特別行政區政府海事處  
Marine Department, HKSARG

2023年10月  
October 2023

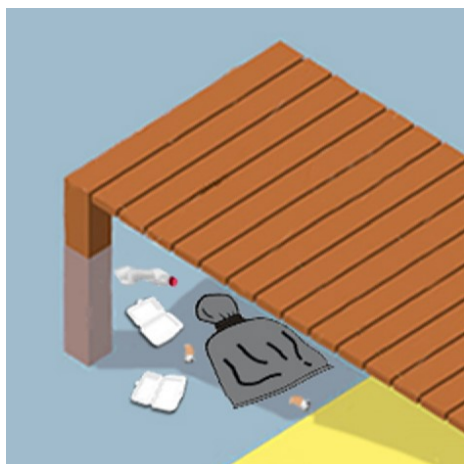
有關最新資訊，請瀏覽海事處網頁

Please visit Marine Department's website for the latest information

## 處理海上垃圾的困難 Difficulties to Tackle Marine Refuse



海上垃圾經常藏在難以察覺的地方，例如前濱石縫之中，因而難以徹底清理。 Marine refuse can easily be trapped in undetectable places, such as rock crevices in the foreshore area, which makes the refuse collection difficult.



海上垃圾會積聚於清理人員難以到達的位置，包括海濱長廊和碼頭底部等。 Marine refuse accumulates in places inaccessible for cleaning workers to clean up, such as areas underneath promenades and piers.



海上垃圾隨海水漂流而擴散或沖到偏遠的沙灘，須動用大量人手來清理。 Floating marine refuse drifts by current and consequently scatters over large areas or be washed up to remote beaches, which requires a lot of manpower to clean up.



清理海上垃圾船隻需要一定水深方可航行，因此未能到達淺水區或岩石的海岸清理。 Refuse cleaning vessels require a certain depth of water for navigation and cannot carry out cleanup operation in shallow waters or rocky foreshore areas.

## 海上垃圾的來源 Sources of Marine Refuse

海上垃圾的陸上源頭大多是來自沿岸地區或內陸，進行康樂活動時產生並留在海濱地區的垃圾，可以被海浪、潮水、風或雨帶入海洋環境。

Land-based sources of marine refuse may originate from coastal areas or further inland. Refuse generated from recreational activities and left behind at waterfront areas may enter the marine environment by waves, tides, wind or rain.

海上垃圾的海上源頭主要來自水上運動、休閒出海、在岸邊垂釣和在海上進行養魚作業人士所拋棄的垃圾。

Marine-based sources of marine refuse are mainly due to littering at sea by people engaging in water sports, leisure boating activities, angling, or fish-farming operations.

約八成海上垃圾源自岸上，其中岸邊及康樂活動產生最多海上垃圾(大多數的垃圾是用完即棄的和與食物有關的物品)。其次是由海洋/水上活動所產生的海上垃圾。另外，與吸煙有關的活動造成的垃圾例如煙蒂、香煙包裝和打火機等，亦會成為海上垃圾的一部份。

About 80% of marine refuse originates from land. Shoreline and Recreational activities generated the largest amount of marine refuse (Most of the refuse was of single-use disposable nature and food-related). Ocean / Water activities contribute to a moderate percentage of marine refuse. In addition, smoking-related activities generate trash like cigarette butts, packages and lighters, which also become marine refuse.

## 妥善處理垃圾小貼士 Tips for Proper Disposal of Refuse

不要把垃圾(例如塑膠袋、煙蒂、飲品罐)棄置於海上或水道中。

Do not dispose refuse (e.g. plastic bags, cigarette butts, drink cans) into the sea or watercourse.

不要把易被風吹走的垃圾或物件放近岸邊或明渠旁。

Do not leave any refuse or object that can be easily blown away by wind near the seafront or alongside nullahs.

船隻負責人應妥善存放垃圾及廢物，家居垃圾可交予海事處的垃圾收集承辦商，或待船隻泊岸時適當處理。

Persons in charge of vessels should properly store their garbage and waste on board. They can hand their domestic refuse to the Marine Department's refuse collection contractors, or dispose it properly after berthing.

