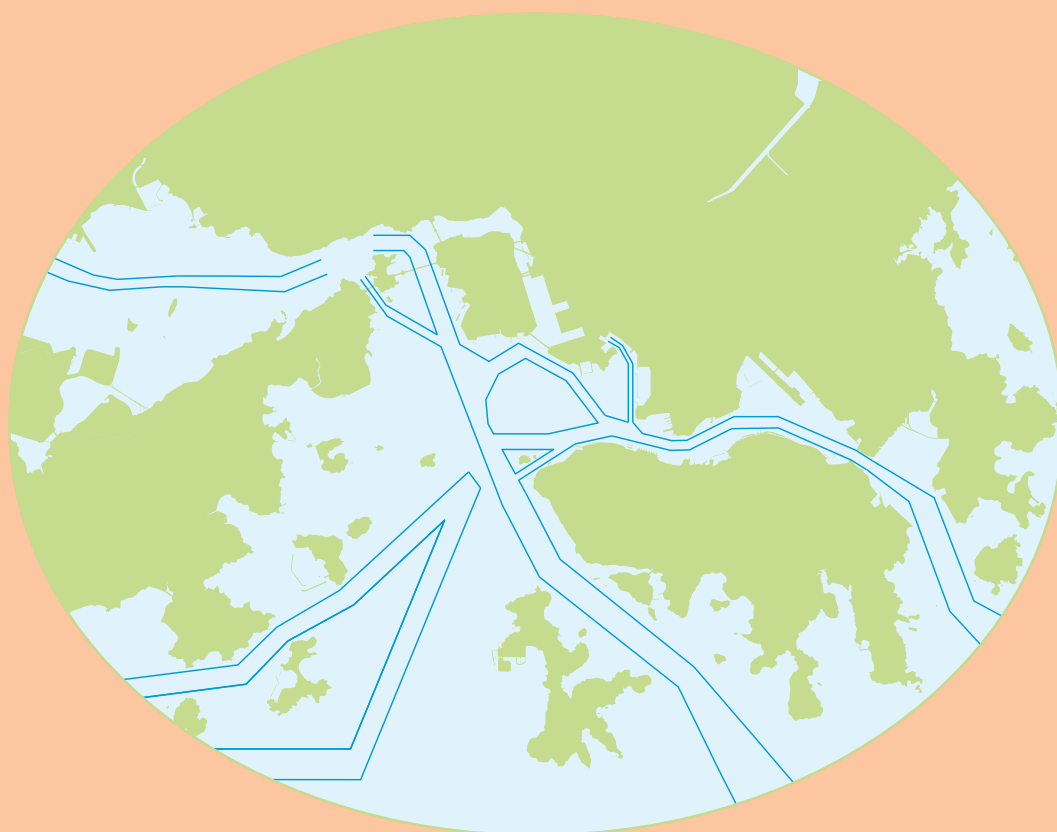


香港港口統計年報

2023

Port of Hong Kong
Statistical Tables



中華人民共和國香港特別行政區海事處
Marine Department
Hong Kong Special Administrative Region
People's Republic of China

香港港口統計年報

PORT OF HONG KONG STATISTICAL TABLES

2023

有關本刊物的查詢，請聯絡：

海事處 策劃、發展協調及港口保安部 統計組

地址：香港中環統一碼頭道 38 號

海港政府大樓 23 樓 2307 室

電話：(852) 2852 3662 圖文傳真：(852) 2542 4638

電郵：st-sec@mardep.gov.hk

Enquiries about this publication can be directed to:

Statistics Section

Planning, Development & Port Security Branch

Marine Department

Address: Room 2307, 23/F, Harbour Building,
38 Pier Road, Central, Hong Kong.

Tel.: (852) 2852 3662 Fax: (852) 2542 4638

E-mail: st-sec@mardep.gov.hk

海事處網站

Website of the Marine Department

<https://www.mardep.gov.hk/>

同心協力，促進卓越海事服務

We are One in Promoting Excellence in Marine Services

目錄
CONTENTS

	頁數 Page No.
註釋 EXPLANATORY NOTES	iv - ix
摘要 SUMMARY	x - xi
第一部 PART I	
港口活動 Port Activities	
<i>抵港／離港的船次</i> <i>Vessel Arrivals/Departures</i>	
表 1 2023 年按主要停泊地點分析抵港遠洋輪船的船次 TABLE 1 Ocean Vessel Arrivals by Main Berthing Location, 2023	1
表 2 2023 年按主要停泊地點分析離港遠洋輪船的船次 TABLE 2 Ocean Vessel Departures by Main Berthing Location, 2023	2
表 3 2023 年按船舶類型分析抵港船舶的船次 TABLE 3 Vessel Arrivals by Ship Type, 2023	3
表 4 2023 年按船旗分析抵港船舶的船次 TABLE 4 Vessel Arrivals by Flag, 2023	4 - 5
表 5 2023 年按船旗分析曾停靠香港的船舶數目和淨噸位 TABLE 5 Number and NT of Vessels Calling Hong Kong by Flag, 2023	6 - 7
表 6 2023 年按選定船舶類型分析離港船舶的平均在港停留時間 TABLE 6 Average Time in Port for Vessels Departing Hong Kong by Selected Ship Type, 2023	8
表 7 2023 年在葵青貨櫃碼頭處理貨物的遠洋輪船統計數字 TABLE 7 Statistics on Ocean Vessels with Cargo Handled at Kwai Tsing Container Terminals, 2023	9
表 8 2023 年按夏季吃水分析抵港遠洋輪船的船次 TABLE 8 Ocean Vessel Arrivals by Summer Draft, 2023	10
表 9 2023 年按船舶總長度分析抵港遠洋輪船的船次 TABLE 9 Ocean Vessel Arrivals by Vessel Length Overall, 2023	10
表 10 2023 年按主要來港原因分析抵港遠洋輪船的船次 TABLE 10 Ocean Vessel Arrivals by Main Reason of Call, 2023	11
表 11 2023 年按停泊地點及有否目的地分析抵港郵輪船次 TABLE 11 Cruise Arrivals by Berthing Location by Whether the Trip with Destination, 2023	12
表 12 2023 年跨境客運碼頭的抵港及離港航次統計數字 TABLE 12 Statistics on Vessel Arrivals and Departures at Cross-Boundary Ferry Terminals, 2023	13
表 13 2023 年按船舶類型分析香港過境船舶的船次 TABLE 13 Number of Vessel Trips Transit Hong Kong by Ship Type, 2023	14

抵港／離港的乘客人次

Passenger Arrivals/Departures

表 14	2023 年按跨境客運碼頭分析抵港及離港乘客人次	
TABLE 14	Passenger Arrivals and Departures by Cross-Boundary Ferry Terminal, 2023	15
表 15	2023 年按航線分析抵港及離港乘客人次	
TABLE 15	Passenger Arrivals and Departures by Route, 2023	16 - 17

港口貨櫃／貨物吞吐量

Port Container/Cargo Throughput

表 16	2023 年按主要貨物裝卸地點分析港口貨櫃吞吐量	
TABLE 16	Port Container Throughput by Main Cargo Handling Location, 2023	18
表 17	2023 年按貨物種類及運輸方式劃分的裝卸港口貨物	
TABLE 17	Port Cargo Discharged/Loaded by Cargo Type and Mode of Transport, 2023	19

第二部

港口服務及管理

PART II

Port Services and Control

表 18	政府繫泊浮泡統計數字	
TABLE 18	Government Mooring Buoys Statistics	20 - 21
表 19	按分布地點分析香港私人繫泊設備數目 (截至 2023 年年底)	
TABLE 19	Number of Private Moorings Laid in Hong Kong by Location (as at end 2023)	22 - 23
表 20	碇泊處一覽 (截至 2023 年年底)	
TABLE 20	List of Anchorages (as at end 2023)	24 - 25
表 21	避風塘一覽 (截至 2023 年年底)	
TABLE 21	List of Typhoon Shelters (as at end 2023)	26
表 22	公眾貨物裝卸區一覽 (截至 2023 年年底)	
TABLE 22	List of Public Cargo Working Areas (as at end 2023)	26
表 23	垃圾收集、油污和檢控個案統計數字	
TABLE 23	Refuse Collection, Oil Pollution and Prosecution Statistics	27 - 28
表 24	按噸位等級分析香港領牌船隻 (截至 2023 年年底)	
TABLE 24	Hong Kong Licensed Vessels by Tonnage Classification (as at end 2023)	29 - 30

		頁數 <u>Page No.</u>
第三部	船舶服務	
PART III	Shipping Services	
表 25	船舶安全統計數字	
TABLE 25	Ship Safety Statistics	31 - 33
表 26	本地船隻安全／海事工業安全／海事意外統計數字	
TABLE 26	Local Vessels Safety/Marine Industrial Safety/Marine Accidents Statistics	34 - 38
表 27	海員發證、註冊和僱用統計數字	
TABLE 27	Seafarers' Certification, Registration and Employment Statistics	39 - 45
表 28	香港註冊船舶統計數字 (截至 2023 年年底)	
TABLE 28	Statistics on Ships Registered in Hong Kong (as at end 2023)	46 - 47
表 29	政府船隊統計數字	
TABLE 29	Government Fleet Statistics	48 - 49
表 30	政府船舶所屬部門及可用率情況 (截至 2023 年年底)	
TABLE 30	Departmental Ownership and Availabilities of Government Vessels (as at end 2023)	50
第四部	附錄	
PART IV	Appendices	
附錄 A	海事處組織架構圖 (截至 2023 年年底)	
APPENDIX A	Organisation Chart of the Marine Department (as at end 2023)	A1
附錄 B	海事處的編制和實際員額 (截至 2023 年年底)	
APPENDIX B	Establishment and Strength of the Marine Department (as at end 2023)	A2 - A6
附錄 C	2023 年海事處訓練組舉辦的課程	
APPENDIX C	Training Courses Conducted by Training Section, Marine Department, 2023	A7 - A8
附錄 D	2023 年海事處訪客	
APPENDIX D	Visitors to the Marine Department, 2023	A9 - A12
附錄 E	2023 年刊憲的海事及航運法例	
APPENDIX E	Maritime and Shipping Legislations Gazetted, 2023	A13 - A14
附錄 F	2023 年輔航設備	
APPENDIX F	Aids to Navigation, 2023	A15 - A19

1. 簡介

《香港港口統計年報》是香港海事處編製的港口及海事統計資料一覽表。這本年報輯錄以下統計數字和資料：

- 抵港／離港的船次
- 抵港／離港的乘客人次
- 港口貨櫃／貨物吞吐量
- 港口服務及管理
- 船舶服務
- 海事處組織架構圖

- 海事處的編制和實際員額

- 海事處舉辦的課程

- 海事處訪客
- 刊憲的海事及航運法例

- 輔航設備

2. 資料來源

船隻統計

船隻統計主要根據船公司、代理人向海事處申報船舶抵達／離開港口的資料時所遞交的申報表 (MD 508 及 MD 510) 編製而成。

(摘要、表 1 – 10)

1. Introduction

The *Port of Hong Kong Statistical Tables* is a collection of Hong Kong Port and Maritime statistical information compiled by the Marine Department. This publication brings together the following statistics and information:

- Vessel Arrivals/Departures
- Passenger Arrivals/Departures
- Port Container/Cargo Throughput
- Port Services and Control
- Shipping Services
- Organisation Chart of the Marine Department
- Establishment and Strength of the Marine Department
- Training Courses Conducted by the Marine Department
- Visitors to the Marine Department
- Gazetted Maritime and Shipping Legislations
- Aids to Navigation

2. Data Sources

Vessel Statistics

Vessel statistics are mainly based on the declaration forms (MD 508 and MD 510) submitted to the Marine Department by shipping companies/agents for declaring arrivals/departures of vessels under their charge. (Summary, Tables 1 – 10)

港口貨櫃吞吐量

在葵青貨櫃碼頭裝運的港口貨櫃統計數字，主要由碼頭經營者提供。在 2019 年以前，葵青貨櫃碼頭以外裝運的遠洋輪船「空」貨櫃統計數字，由海事處根據申報表 MD 508 及 MD 510 編製，所有其他詳細的貨櫃統計數字，皆由政府統計處根據貨物艙單中所列的託運貨物抽取樣本編製而成。自 2019 年開始，葵青貨櫃碼頭以外裝運的遠洋輪船「空」貨櫃統計數字亦由政府統計處根據貨物艙單中所列的託運貨物抽取樣本編製而成。(摘要、表 16)

港口貨物吞吐量

港口貨物吞吐量是由政府統計處根據貨物艙單中所列的託運貨物抽取樣本編製而成。(表 17)

停泊／貨物裝卸地點

有關遠洋輪船的主要貨物裝卸地點和主要停泊地點的資料，取自海事處船隻航行監察服務資訊系統所保存的船舶活動報告。(表 1 – 2、7)

3. 用語及分類

容量

在本報告中，船舶的容量是以淨噸位來表示。計算單位為淨噸。淨噸位是由一艘船的船殼內的容量(以立方呎計)，加上在甲板上用以裝載貨物、貯藏品及乘客的空間，再減去船長、高級船員、船員所住的地方、燃料、導航及推進器所佔用的地方。每一淨噸相等於 100 立方呎的容量。

Port Container Throughput

Statistics on port container throughput handled at Kwai Tsing Container Terminals (KTCT) are mainly obtained from the terminal operators. Prior to 2019, statistics on empty containers (ocean) handled at locations other than KTCT are compiled by the Marine Department based on the declaration forms of MD 508 and MD 510. As for all the other detailed container throughput statistics, they are compiled by the Census and Statistics Department (C&SD) based on a sample of consignments listed in the cargo manifests. Starting from 2019, statistics on empty containers (ocean) handled at locations other than KTCT are also compiled by C&SD based on a sample of consignments listed in the cargo manifests. (Summary, Table 16)

Port Cargo Throughput

Port cargo statistics are compiled by the Census and Statistics Department based on a sample of consignments listed in the cargo manifests. (Table 17)

Berthing/Cargo Handling Location

Information on the main cargo handling location and main berthing location in respect of ocean vessels are extracted from the trip activity report kept in the Marine Department's Vessel Traffic Services Information System. (Tables 1 – 2, 7)

3. Terms and Classifications

Capacity

In this report, the capacity of a vessel is expressed in terms of net tonnage (NT). The unit of measurement is net ton. NT is, broadly, the capacity of a ship in cubic feet of the space within the hull, and of the enclosed space above the deck available for cargo, stores and passengers but excluding space used for the accommodation of the master, officers, crew, fuel, navigation and propelling machinery. One net ton is equivalent to 100 cubic feet of capacity.

停泊／貨物裝卸地點

停泊／貨物裝卸地點可分為四類：葵青貨櫃碼頭、泊位和倉庫碼頭(包括公眾貨物裝卸區、海運碼頭及啟德郵輪碼頭)、碇泊處和浮泡。

港口貨櫃吞吐量

這是指以標準貨櫃單位計算作為搬運貨物之用的貨櫃數目。一個標準貨櫃單位等同一個二十呎貨櫃的容量。

船旗

這是指船舶註冊的地方。香港在 1992 年正式開始船舶註冊制度。1997 年 7 月 1 日起，香港特別行政區經中央人民政府授權繼續進行船舶註冊，並根據香港特別行政區的法律以「中國香港」的名義頒發有關證件。

內河航限

內河航限是指香港鄰近水域，一般指香港與珠江、大鵬灣及澳門，及其他在廣東和廣西與香港鄰近水域相連的內陸水域。內河航限的定義在香港法例第 313 章《船舶及港口管制條例》訂明，其精確定義是指以下範圍內的水域：

- 東至東經 114°30'；
- 南至北緯 22°09'；及
- 西至東經 113°31'。

船舶類型

這是指船舶的特定用途，可分為以下類別：運車船、化學品運載船、普通貨船、其他貨船、郵船／渡輪、散裝乾貨船和礦沙／散貨／油類混用船、漁船／魚類加工船、全槽格式貨櫃船、液化氣體運載船、駁船／躉船／貨艇、油輪、其他液體運載船、遊樂船、滾裝卸式船、半貨櫃船、拖船及其他。

Berthing/Cargo Handling Location

The berthing/cargo handling location can be distinguished into four types: Kwai Tsing Container Terminals, berths and wharves (including public cargo working areas, Ocean Terminal and Kai Tak Cruise Terminal), anchorages, and buoys.

Port Container Throughput

This refers to the number of containers for moving the cargo in TEU terms. A TEU stands for a twenty-foot equivalent unit.

Flag

This refers to the location of where a vessel is registered. In Hong Kong, the official vessel registration system was set up in 1992. As from 1 July 1997, the Hong Kong Special Administrative Region is authorised by the Central People's Government to continue to maintain a shipping register and issue related certificates under its legislation, using the name "Hong Kong, China".

River Trade Limits

River trade limits mean the waters in the vicinity of Hong Kong, which broadly include the Pearl River, Mirs Bay and Macao, and other inland waters in Guangdong and Guangxi which are accessible from waters in the vicinity of Hong Kong. The precise definition of river trade limits under the Shipping and Port Control Ordinance, Cap. 313, Laws of Hong Kong refers to waters within the following boundaries:

- to the East, meridian 114°30' East;
- to the South, parallel 22°09' North; and
- to the West, meridian 113°31' East.

Ship Type

This refers to the known specific function of the ship and can be distinguished into the following types: car carrier, chemical carrier/tanker, conventional cargo vessel, other cargo vessel, cruise/ferry, dry bulk carrier and ore/bulk/oil carrier, fishing/fish processing vessel, fully cellular container vessel, gas carrier/tanker, lighter/barge/cargo junk, oil tanker, other fluid carrier, pleasure vessel, roll on/roll off, semi-container vessel, tug and others.

4. 資料定義

遠洋輪船和內河船隻

遠洋輪船和內河船隻的定義是根據所停靠港口是否已超越內河航限而定。遠洋輪船是指越過內河航限行駛的船隻，而內河船隻則指在內河航限內行駛的船隻。內河航限的定義在香港法例第313章《船舶及港口管制條例》訂明。(摘要、表1-10、16)

停泊/貨物裝卸地點

船舶在進入香港水域後可能停泊超過一個停泊地點。若船舶來港的主要原因是裝卸貨物，則主要的貨物裝卸地點和主要的停泊地點以葵青貨櫃碼頭、泊位和倉庫碼頭(包括公眾貨物裝卸區)、碇泊處和浮泡排列。若船舶來港的主要原因不是裝卸貨物，主要停泊地點為停留時間最長的地點。(表1-2、7、16)

內河客船

內河客船的抵港次數是指船隻停泊於港澳碼頭、中國客運碼頭、屯門客運碼頭和海天客運碼頭的次數。內河客船數字不包括非載客的船次。屯門客運碼頭由2021年6月8日起停止運作。由2017年開始，內河客船包括在內河航限行駛的郵船。(摘要、表3-5)

4. Data Definitions

Ocean Vessels and River Vessels

Ocean vessels and river vessels are defined according to whether or not their ports of call are beyond the river trade limits. Ocean vessels refer to vessels operating beyond the river trade limits while river vessels refer to vessels plying within the river trade limits. The interpretation of river trade limits is defined under the Shipping and Port Control Ordinance, Cap. 313, Laws of Hong Kong. (Summary, Tables 1 – 10, 16)

Berthing/Cargo Handling Location

A vessel may berth at more than one location after entering into Hong Kong waters. If the main reason of call of the vessel is for loading/discharging cargo, both the main cargo handling location and the main berthing location were presented in the order of Kwai Tsing Container Terminals, berths and wharves (including public cargo working areas), anchorages, and buoys. If the main reason of call is not for loading/discharging cargo, the main berthing location refers to the one with the longest stay. (Tables 1 – 2, 7, 16)

River Passenger Vessels

The figures on arrivals of river passenger vessels refer to the number of berthings at the Hong Kong - Macau Ferry Terminal, the China Ferry Terminal, the Tuen Mun Ferry Terminal (TMFT) and SkyPier. Non-passenger carrying trips are excluded from river passenger vessels. The TMFT has ceased operation since 8 June 2021. As from 2017, river passenger vessels include cruises plying within the river trade limits. (Summary, Tables 3 – 5)

5. 資料局限

由於不能準確地統計本地領牌遊樂船和漁船來往香港及內河航限內的船次，故這兩類船隻沒有包括在內河船隻統計範圍內。(摘要、表 3 – 6)

6. 數字的進位

港口貨物和貨櫃吞吐量及淨噸位統計數字是計算至最接近的千位。

項目	單位
港口貨物吞吐量	千公噸
港口貨櫃吞吐量	千個標準貨櫃單位
淨噸位	千噸

由於四捨五入關係，本報告中所列的個別數字加起來可能不等於其總數。另外，變動百分率和比重百分率是以未經進位的數字計算所得。

5. Data Limitations

As accurate number of trips of locally licensed pleasure vessels and fishing vessels plying between Hong Kong and the river trade limits is not available, these two categories of vessels are not included in the river vessel statistics. (Summary, Tables 3 – 6)

6. Rounding of Figures

Statistics on port cargo and container throughput, and net tonnage (NT) are rounded to the nearest thousand.

Items	Units
Port Cargo Throughput	'000 tonnes
Port Container Throughput	'000 TEUs
NT	'000 tons

Figures shown in this report may not add up to the respective totals due to rounding. Furthermore, percentage changes and percentage shares are calculated from unrounded figures.

7. 代號

- () 與去年同期比較的變動百分率
- ^ 變動在 $\pm 0.05\%$ 之間
- § 變動多於 100%
- @ 比重百分率少於 0.05
- † 少於 500 個標準貨櫃單位／人次／公噸

- # 臨時數字
- * 修訂數字
- N.A. 沒有數字
- 不適用

海事處
策劃、發展協調及港口保安部
統計組

2024 年 5 月

7. Symbols

- () % change over the same period of preceding year
- ^ Change within $\pm 0.05\%$
- § Change more than 100%
- @ Percentage share less than 0.05
- † Less than 500 TEUs/passenger journeys/tonnes

- # Provisional figures
- * Revised figures
- N.A. Not available
- Not applicable

Statistics Section
Planning, Development & Port Security Branch
Marine Department

May 2024

摘要
SUMMARY

2018年至2023年主要港口統計數字
Principal Port Statistics for 2018 – 2023

項目 Item	2018	2022	2023	平均每年變動百分率 Average Annual Rate of Change		
				2022-2023	2018-2023	
1. 抵港船次	Vessel Arrivals	174 610	66 790	92 198	+38.0%	-12.0%
(a) 遠洋輪船	Ocean Vessels	25 410	16 735	18 867	+12.7%	-5.8%
遠洋貨船	<i>Ocean Cargo Vessels</i>	24 032	16 658	18 572	+11.5%	-5.0%
遠洋客船	<i>Ocean Passenger Vessels</i>	1 378	77	295	§	-26.5%
(b) 內河船隻	River Vessels	149 200	50 055	73 331	+46.5%	-13.2%
內河貨船	<i>River Cargo Vessels</i>	67 647	48 716	43 467	-10.8%	-8.5%
內河客船	<i>River Passenger Vessels</i>	81 553	1 339	29 864	§	-18.2%
2. 抵港船舶的淨噸位 (千噸)	NT of Vessel Arrivals ('000 tons)	509 417	309 055	376 265	+21.7%	-5.9%
(a) 遠洋輪船	Ocean Vessels	398 747	243 205	301 544	+24.0%	-5.4%
(b) 內河船隻	River Vessels	110 670	65 849	74 720	+13.5%	-7.6%
3. 港口貨櫃吞吐量 (千個標準貨櫃單位)	Port Container Throughput ('000 TEUs)	19 596	16 685	14 401	-13.7%	-6.0%
(a) 按停泊地點分析	By Berthing Location					
葵青貨櫃碼頭	<i>Kwai Tsing Container Terminals</i>	15 473	12 869	11 033	-14.3%	-6.5%
葵青貨櫃碼頭以外	<i>Other than Kwai Tsing Container Terminals</i>	4 123	3 816	3 368	-11.7%	-4.0%
(b) 按運輸方式分析	By Mode of Transport					
海運	<i>Seaborne</i>	13 764	11 588	10 137	-12.5%	-5.9%
河運	<i>River</i>	5 833	5 097	4 264	-16.3%	-6.1%
4. 港口貨物吞吐量 (千公噸)	Port Cargo Throughput ('000 tonnes)	258 541	192 104	174 866	-9.0%	-7.5%
(a) 海運	Seaborne	164 550	129 989	115 139	-11.4%	-6.9%
(b) 河運	River	93 991	62 115	59 727	-3.8%	-8.7%
5. 跨境渡輪⁽¹⁾⁽²⁾⁽³⁾及郵輪⁽⁴⁾乘客人次 (千乘客人次)	Cross-boundary Ferry⁽¹⁾⁽²⁾⁽³⁾ and Cruise⁽⁴⁾ Passenger Journeys (‘000 passenger journeys)	28 058	138	8 478	§	-21.3%

摘要 – 續
SUMMARY – Cont'd

項目 Item	2018	2022	2023	平均每年變動百分率 Average Annual Rate of Change	
				2022-2023	2018-2023
6. 客運碼頭乘客人次⁽²⁾⁽⁵⁾ (千乘客人次)	23 780	0	7 536	-	-20.5%
(a) 澳門 Macao	19 517	0	6 135	-	-20.7%
(b) 中國內地 Mainland China	4 264	0	1 401	-	-20.0%

- 註釋：
Notes:
- (1) 包括海事處轄下的客運碼頭(包括港澳碼頭、中國客運碼頭及屯門客運碼頭)和海天客運碼頭的跨境渡輪。
Including cross-boundary ferries in Marine Ferry Terminals (including Hong Kong - Macau Ferry Terminal, China Ferry Terminal and Tuen Mun Ferry Terminal) under the Marine Department, and SkyPier.
 - (2) 屯門客運碼頭由 2021 年 6 月 8 日起停止運作。中國客運碼頭的跨境渡輪服務自 2020 年 1 月 30 日起暫停，並於 2023 年 1 月 8 日恢復，而港澳碼頭的跨境渡輪服務亦自 2020 年 2 月 4 日起暫停，並於 2023 年 1 月 8 日恢復。
Tuen Mun Ferry Terminal has ceased operation since 8 June 2021. The cross-boundary ferry service at China Ferry Terminal was suspended on 30 January 2020 and has been resumed since 8 January 2023, while that at Hong Kong - Macau Ferry Terminal was suspended on 4 February 2020 and has been resumed since 8 January 2023.
 - (3) 海天客運碼頭除包租快船轉駁服務之外，來往香港國際機場與內地及澳門的定期快船轉駁服務自 2020 年 4 月起經已暫停，有關服務由 2020 年 10 月 28 日起逐步恢復。
Except for the chartered ferry transfer services, the scheduled ferry transfer services at SkyPier between Hong Kong International Airport and the Mainland China and Macao were suspended in April 2020. Related services have been resumed gradually since 28 October 2020.
 - (4) 啟德郵輪碼頭及海運碼頭自 2020 年 2 月 5 日起暫停旅客清關服務。「公海遊」自 2021 年 7 月 30 日起復辦，自 2022 年 1 月 7 日起暫停，並於 2023 年 3 月 10 日起復辦。
Passenger clearance services at Kai Tak Cruise Terminal and Ocean Terminal have been suspended since 5 February 2020. "Cruise-to-nowhere" itineraries were resumed on 30 July 2021, suspended on 7 January 2022, and have been resumed since 10 March 2023.
 - (5) 指海事處轄下客運碼頭的乘客人次，包括乘搭直升機的乘客人次。
They refer to passenger journeys of Marine Ferry Terminals under the Marine Department. Figures include helicopter passenger journeys.

統計表

Statistical
Tables

表 1
TABLE 1

2023 年按主要停泊地點分析抵港遠洋輪船的船次
Ocean Vessel Arrivals by Main Berthing Location, 2023

主要停泊地點 Main Berthing Location	主要船舶類別 Main Vessel Category				總計 Total	
	貨船 Cargo Vessels		客船 Passenger Vessels			
	抵港船次 No. of Vessel Arrivals	淨噸位 (千噸) NT ('000)	抵港船次 No. of Vessel Arrivals	淨噸位 (千噸) NT ('000)	抵港船次 No. of Vessel Arrivals	淨噸位 (千噸) NT ('000)
	(%)	(%)	(%)	(%)	(%)	(%)
葵青貨櫃碼頭 Kwai Tsing Container Terminals	8 807 (+1.5)	185 549 (+9.9)	0 (-)	0 (-)	8 807 (+1.5)	185 549 (+9.9)
泊位和倉庫碼頭 ⁽¹⁾ Berths and Wharves ⁽¹⁾	2 159 (-2.5)	12 867 (+3.3)	239 (§)	7 589 (§)	2 398 (+6.9)	20 456 (+45.3)
碇泊處 Anchorage	7 597 (+32.0)	95 492 (+66.5)	56 (+16.7)	9 (-99.7)	7 653 (+31.9)	95 501 (+58.4)
浮泡 Buoys	9 (-25.0)	38 (-29.6)	0 (-)	0 (-)	9 (-25.0)	38 (-29.6)
總計 Total	18 572 (+11.5)	293 947 (+23.2)	295 (§)	7 597 (+67.4)	18 867 (+12.7)	301 544 (+24.0)

註釋： (1) 包括公眾貨物裝卸區、海運碼頭及啟德郵輪碼頭。
Note: Including public cargo working areas, Ocean Terminal and Kai Tak Cruise Terminal.

表 2
TABLE 2

2023 年按主要停泊地點分析離港遠洋輪船的船次
Ocean Vessel Departures by Main Berthing Location, 2023

主要停泊地點 Main Berthing Location	主要船舶類別 Main Vessel Category				總計 Total	
	貨船 Cargo Vessels		客船 Passenger Vessels			
	離港船次 No. of Vessel Departures	淨噸位 (千噸) NT ('000)	離港船次 No. of Vessel Departures	淨噸位 (千噸) NT ('000)	離港船次 No. of Vessel Departures	淨噸位 (千噸) NT ('000)
	(%)	(%)	(%)	(%)	(%)	(%)
葵青貨櫃碼頭 Kwai Tsing Container Terminals	8 757 (^)	184 229 (+8.7)	0 (-)	0 (-)	8 757 (^)	184 229 (+8.7)
泊位和倉庫碼頭 ⁽¹⁾ Berths and Wharves ⁽¹⁾	2 292 (+15.5)	13 285 (+10.3)	249 (§)	7 452 (§)	2 541 (+25.4)	20 737 (+51.7)
碇泊處 Anchorage	8 150 (+36.3)	105 749 (+70.2)	82 (+49.1)	72 (-97.5)	8 232 (+36.4)	105 821 (+62.7)
浮泡 Buoys	5 (-61.5)	21 (-64.3)	0 (-)	0 (-)	5 (-61.5)	21 (-64.3)
總計 Total	19 204 (+14.8)	303 284(+24.4)	331 (§)	7 524 (+65.7)	19 535 (+16.1)	310 808(+25.2)

註釋： (1) 包括公眾貨物裝卸區、海運碼頭及啟德郵輪碼頭。
Note: Including public cargo working areas, Ocean Terminal and Kai Tak Cruise Terminal.

表 3
TABLE 3

2023 年按船舶類型分析抵港船舶的船次
Vessel Arrivals by Ship Type, 2023

船舶類型 Ship Type	遠洋輪船 Ocean Vessels		內河船隻 River Vessels		總計 Total	
	抵港船次 No. of Vessel Arrivals	比重 百分率 Percentage Share	抵港船次 No. of Vessel Arrivals	比重 百分率 Percentage Share	抵港船次 No. of Vessel Arrivals	比重 百分率 Percentage Share
運車船 Car Carrier	(%) 131 (-4.4)	0.7%	(%) 13 (-55.2)	@	(%) 144 (-13.3)	0.2%
化學品運載船 Chemical Carrier/Tanker	480 (+27.3)	2.5%	114 (+81.0)	0.2%	594 (+35.0)	0.6%
普通貨船 Conventional Cargo Vessel	1 340 (+27.4)	7.1%	2 375 (+10.2)	3.2%	3 715 (+15.8)	4.0%
郵船／渡輪 Cruise/Ferry	164 (\$)	0.9%	29 864 (\$)	40.7%	30 028 (\$)	32.6%
散裝乾貨船／ 礦沙／散貨／油類混用船 Dry Bulk Carrier/ Ore/Bulk/Oil (OBO) Carrier	2 970 (+34.7)	15.7%	5 905 (+25.9)	8.1%	8 875 (+28.7)	9.6%
漁船／魚類加工船 Fishing/Fish Processing Vessel	423 (\$)	2.2%	N.A.	N.A.	423 (\$)	0.5%
全槽格式貨櫃船 Fully Cellular Container Vessel	12 024 (+3.2)	63.7%	23 813 (-13.2)	32.5%	35 837 (-8.4)	38.9%
液化氣體運載船 Gas Carrier/Tanker	292 (+96.0)	1.5%	117 (0)	0.2%	409 (+53.8)	0.4%
駁船／躉船／貨艇 Lighter/Barge/Cargo Junk	0 (-)	0%	281 (0)	0.4%	281 (0)	0.3%
油輪 Oil Tanker	586 (+28.2)	3.1%	235 (+43.3)	0.3%	821 (+32.2)	0.9%
遊樂船 Pleasure Vessel	131 (\$)	0.7%	N.A.	N.A.	131 (\$)	0.1%
滾裝卸式船 Roll On/Roll Off	61 (-29.9)	0.3%	38 (\$)	0.1%	99 (+8.8)	0.1%
半貨櫃船 Semi-container Vessel	113 (+7.6)	0.6%	9 882 (-19.3)	13.5%	9 995 (-19.1)	10.8%
拖船 Tug	64 (+30.6)	0.3%	558 (+10.7)	0.8%	622 (+12.5)	0.7%
其他 Others	88 (-66.5)	0.5%	136 (-86.6)	0.2%	224 (-82.4)	0.2%
總計 Total	18 867 (+12.7)	100.0%	73 331 (+46.5)	100.0%	92 198 (+38.0)	100.0%

註釋： 2023 年沒有「其他貨船」及「其他液體運載船」的抵港船次。
Note: There was no vessel arrival of “other cargo vessel” and “other fluid carrier” in 2023.

表 4
TABLE 4

2023 年按船旗分析抵港船舶的船次
Vessel Arrivals by Flag, 2023

船旗 Flag	遠洋輪船 Ocean Vessels				內河船隻 River Vessels				總計 Total			
	抵港船次 No. of Vessel Arrivals		淨噸位 (千噸) NT ('000)		抵港船次 No. of Vessel Arrivals		淨噸位 (千噸) NT ('000)		抵港船次 No. of Vessel Arrivals		淨噸位 (千噸) NT ('000)	
		(%)		(%)		(%)		(%)		(%)		(%)
安提瓜和巴布達 Antigua and Barbuda	99	(-7.5)	791	(+12.5)	13	(+85.7)	109	(+99.7)	112	(-1.8)	900	(+18.8)
巴哈馬 Bahamas	332	(+77.5)	8 749	(+38.5)	18	(+20.0)	258	(-19.5)	350	(+73.3)	9 007	(+35.7)
伯利茲 Belize	225	(+33.9)	645	(+37.7)	26	(+30.0)	102	(+64.0)	251	(+33.5)	747	(+40.8)
中國 China	3 343	(-6.1)	18 472	(+24.8)	55 662	(+17.8)	50 986	(-1.6)	59 005	(+16.2)	69 458	(+4.3)
塞浦路斯 Cyprus	204	(-3.3)	3 458	(+44.0)	15	(-25.0)	250	(-19.1)	219	(-5.2)	3 708	(+36.8)
丹麥 Denmark	215	(+28.7)	7 935	(+45.1)	10	(§)	227	(§)	225	(+32.4)	8 163	(+46.6)
德國 Germany	52	(+92.6)	3 146	(§)	0	(-)	0	(-)	52	(+92.6)	3 146	(§)
中國香港 Hong Kong, China	2 217	(+10.8)	58 184	(+26.0)	16 307	(§)	6 244	(§)	18 524	(§)	64 429	(+31.4)
印度尼西亞 Indonesia	54	(-27.0)	451	(+8.5)	7	(§)	38	(§)	61	(-18.7)	489	(+17.0)
日本 Japan	79	(+12.9)	3 550	(-8.4)	2	(+100.0)	43	(-11.2)	81	(+14.1)	3 593	(-8.5)
韓國 Republic of Korea	550	(+7.4)	6 379	(+9.8)	14	(+40.0)	176	(§)	564	(+8.0)	65 55	(+12.1)
利比里亞 Liberia	1 981	(+14.4)	47 951	(+28.7)	159	(+29.3)	3 063	(+48.7)	2 140	(+15.4)	51 013	(+29.8)
馬來西亞 Malaysia	106	(-13.8)	351	(-44.1)	3	(-83.3)	13	(-88.9)	109	(-22.7)	364	(-51.2)
馬耳他 Malta	610	(+52.9)	20 311	(+71.6)	63	(§)	1 897	(§)	673	(+58.0)	22 208	(+77.1)
馬紹爾群島 Marshall Islands	1 544	(+32.8)	22 784	(+14.1)	164	(+49.1)	2 681	(+44.2)	1 708	(+34.2)	25 465	(+16.7)
巴拿馬 Panama	3 312	(+14.0)	41 451	(+8.5)	442	(+52.4)	4 374	(+60.6)	3 754	(+17.5)	45 826	(+12.0)
葡萄牙 Portugal	153	(-10.0)	3 510	(-11.5)	13	(+18.2)	276	(+7.0)	166	(-8.3)	3 785	(-10.3)
塞拉利昂 Sierra Leone	194	(+17.6)	450	(+31.9)	26	(+52.9)	90	(§)	220	(+20.9)	540	(+42.9)

表 4 – 續
TABLE 4 – Cont'd

船旗 Flag	遠洋輪船 Ocean Vessels				內河船隻 River Vessels				總計 Total			
	抵港船次 No. of Vessel Arrivals		淨噸位 (千噸) NT ('000)		抵港船次 No. of Vessel Arrivals		淨噸位 (千噸) NT ('000)		抵港船次 No. of Vessel Arrivals		淨噸位 (千噸) NT ('000)	
	(%)	(%)	(%)	(%)	(%)	(%)	(%)	(%)	(%)	(%)	(%)	
新加坡 Singapore	1 851	(+5.2)	33 182	(+17.2)	118	(+8.3)	1 732	(+34.3)	1 969	(+5.4)	34 914	(+18.0)
中國台灣 Taiwan, China	703	(+77.1)	3 937	(+2.9)	57	(§)	575	(§)	760	(+80.1)	4 511	(+10.4)
泰國 Thailand	100	(+22.0)	600	(+35.1)	15	(§)	96	(+91.9)	115	(+30.7)	696	(+40.9)
英國 United Kingdom	193	(+4.9)	7 209	(+9.5)	7	(-22.2)	142	(-28.1)	200	(+3.6)	7 352	(+8.4)
越南 Vietnam	287	(+5.5)	1 877	(+36.8)	93	(+16.3)	323	(§)	380	(+8.0)	2 200	(+43.6)
其他 ⁽¹⁾ Others ⁽¹⁾	463	(+54.3)	6 171	(§)	97	(+47.0)	1 025	(+88.0)	560	(+53.0)	7 196	(§)
總計 Total	18 867	(+12.7)	301 544	(+24.0)	73 331	(+46.5)	74 720	(+13.5)	92 198	(+38.0)	376 265	(+21.7)

註釋： (1) 指該年所有遠洋輪船抵港船次總數少於 50 船次的旗號。

Note: Referring to those flags of which the total number of ocean vessel arrivals being less than 50 during the year.

表 5
TABLE 5

2023 年按船旗分析曾停靠香港的船舶數目和淨噸位
Number and NT of Vessels Calling Hong Kong by Flag, 2023

船旗 Flag	遠洋輪船 ⁽¹⁾ Ocean Vessels ⁽¹⁾				內河船隻 ⁽¹⁾ River Vessels ⁽¹⁾			
	船舶數目 Number of Vessels		淨噸位 (千噸) NT ('000)		船舶數目 Number of Vessels		淨噸位 (千噸) NT ('000)	
	(%)		(%)		(%)		(%)	
安提瓜和巴布達 Antigua and Barbuda	29	(+16.0)	213	(+39.4)	11	(\$)	100	(\$)
巴哈馬 Bahamas	59	(+34.1)	1 359	(+17.9)	16	(+6.7)	240	(-25.0)
伯利茲 Belize	97	(+22.8)	263	(+22.2)	22	(+15.8)	85	(+45.0)
中國 China	481	(+19.7)	6 025	(+21.5)	1 095	(+7.7)	3 328	(+46.9)
塞浦路斯 Cyprus	64	(+36.2)	1 692	(\$)	14	(-12.5)	245	(-4.7)
丹麥 Denmark	57	(+9.6)	2 457	(+12.4)	10	(\$)	227	(\$)
德國 Germany	24	(+84.6)	1 520	(\$)	0	(-)	0	(-)
希臘 Greece	24	(+50.0)	940	(+75.4)	4	(\$)	107	(\$)
中國香港 Hong Kong, China	627	(+20.6)	17 871	(+37.4)	332	(+10.3)	1 558	(-11.9)
日本 Japan	36	(+9.1)	1 308	(-3.6)	2	(+100.0)	43	(-11.2)
韓國 Republic of Korea	129	(+4.0)	1 716	(+19.9)	13	(+30.0)	174	(\$)
利比里亞 Liberia	615	(+16.7)	18 933	(+33.8)	131	(+21.3)	2 633	(+41.8)
馬來西亞 Malaysia	39	(+62.5)	93	(+4.7)	3	(-62.5)	13	(-81.2)
馬耳他 Malta	194	(+34.7)	8 052	(+50.8)	45	(+80.0)	1 354	(\$)
馬紹爾群島 Marshall Islands	451	(+22.9)	9 397	(+9.9)	115	(+38.6)	2 028	(+43.2)
巴拿馬 Panama	1 132	(+15.0)	17 074	(+8.4)	306	(+53.8)	3 584	(+55.9)
菲律賓 Philippines	27	(+58.8)	184	(+69.9)	6	(\$)	77	(\$)
葡萄牙 Portugal	55	(+10.0)	1 483	(-0.4)	11	(+10.0)	202	(-17.3)

表 5 – 續
TABLE 5 – Cont'd

船旗 Flag	遠洋輪船 ⁽¹⁾ Ocean Vessels ⁽¹⁾				內河船隻 ⁽¹⁾ River Vessels ⁽¹⁾			
	船舶數目 Number of Vessels		淨噸位 (千噸) NT ('000)		船舶數目 Number of Vessels		淨噸位 (千噸) NT ('000)	
		(%)		(%)		(%)		(%)
塞拉利昂 Sierra Leone	38	(-7.3)	107	(-9.4)	15	(+15.4)	54	(+94.9)
新加坡 Singapore	410	(+6.8)	10 104	(+16.9)	97	(+14.1)	1 538	(+43.5)
中國台灣 Taiwan, China	44	(-8.3)	629	(-4.9)	4	(-50.0)	78	(-25.7)
泰國 Thailand	25	(+31.6)	149	(+39.6)	7	(+40.0)	49	(+28.0)
英國 United Kingdom	57	(+7.5)	2 159	(+17.7)	7	(-12.5)	142	(-26.3)
越南 Vietnam	109	(+7.9)	770	(+39.2)	45	(+28.6)	130	(+30.3)
其他 ⁽²⁾ Others ⁽²⁾	279	(+80.0)	3 237	(§)	81	(+32.8)	753	(+55.9)
總計 Total	5 102	(+19.5)	107 737	(+26.4)	2 392	(+17.4)	18 743	(+38.9)

註釋： (1) 此表內的遠洋輪船及內河船隻數目不能直接地加在一起，因為同一艘船舶在一年內不同的抵港旅程可能會被歸納於遠洋及內河船舶類別，視乎該抵港旅程是否超越內河航限而定。

Notes: The number of ocean vessels and river vessels in this table cannot be grouped together by simple addition as the same vessel may be classified as ocean and river vessel in different trips during a year depending on whether her trips to Hong Kong were beyond the river trade limits or not.

(2) 指該年所有遠洋輪船抵港船舶總數少於 20 船舶的旗號。

Referring to those flags of which the total number of ocean vessels calling Hong Kong being less than 20 during the year.

表 6
TABLE 6

2023 年按選定船舶類型分析離港船舶的平均在港停留時間
Average Time in Port for Vessels Departing Hong Kong by Selected Ship Type, 2023

小時
Hours

船舶類型 Ship Type	遠洋輪船 Ocean Vessels	內河船隻 River Vessels	總計 Total
所有船舶類型 All Ship Types	23	38⁽¹⁾	33⁽¹⁾
當中 ⁽²⁾ ： Of Which ⁽²⁾ :			
全槽格式貨櫃船 Fully Cellular Container Vessel	17	30	26
散裝乾貨船／ 礦沙／散貨／油類混用船 Dry Bulk Carrier/ Ore/Bulk/Oil (OBO) Carrier	23	74	55
半貨櫃船 Semi-container Vessel	20	33	33
普通貨船 Conventional Cargo Vessel	22	18	20

註釋： (1) 不包括郵船／渡輪、漁船／魚類加工船及遊樂船的內河船隻。
Notes: Excluding cruises/ferries, fishing/fish processing vessels and pleasure vessels under river vessels.

(2) 包括該年所有離港船次總數不少於 1000 船次的船舶類型。
Including those ship types of which the total number of departure trips being not less than 1000 during the year.

表 7
TABLE 7

2023 年在葵青貨櫃碼頭處理貨物的遠洋輪船統計數字
Statistics on Ocean Vessels with Cargo Handled at Kwai Tsing Container Terminals, 2023

項目 Item	抵港船次 No. of Vessel Arrivals	比重百分率 Percentage Share
	(%)	
在葵青貨櫃碼頭處理貨物的遠洋輪船 Ocean Vessels with Cargo Handled at Kwai Tsing Container Terminals	8 702 (+1.8)	100.0%
- 按載重噸分析 Analysed by Deadweight Tonnage (DWT)		
< 10 000	218 (-37.4)	2.5%
10 000 – < 20 000	1 105 (-17.3)	12.7%
20 000 – < 30 000	2 890 (+2.2)	33.2%
30 000 – < 40 000	1 535 (+18.0)	17.6%
40 000 – < 50 000	92 (-17.9)	1.1%
50 000 – < 100 000	1 528 (+7.2)	17.6%
100 000 – < 120 000	527 (-5.9)	6.1%
≥ 120 000	807 (+26.7)	9.3%
- 按主要貿易地區／國家分析 (根據所申報的上一個停靠港口) Analysed by Principal Trading Region/Country (Based on Previous Port Reported)		
亞洲 Asia	7 979 (+3.2)	91.7%
– 中國內地 – Mainland China	2 025 (+19.7)	23.3%
– 中國台灣 – Taiwan, China	1 603 (-8.1)	18.4%
– 越南 – Vietnam	1 220 (-8.8)	14.0%
– 新加坡 – Singapore	746 (+33.7)	8.6%
– 泰國 – Thailand	591 (-7.1)	6.8%
– 韓國 – Republic of Korea	509 (-2.5)	5.8%
– 馬來西亞 – Malaysia	448 (-4.9)	5.1%
– 菲律賓 – Philippines	414 (+26.6)	4.8%
– 日本 – Japan	258 (+8.4)	3.0%
– 印度尼西亞 – Indonesia	121 (-6.9)	1.4%
– 其他 – Others	44 (-39.7)	0.5%
中美洲、南美洲 Central and South America	240 (-11.8)	2.8%
大洋洲 Oceania	211 (-4.1)	2.4%
北美洲 North America	140 (-20.9)	1.6%
西歐 Western Europe	77 (+30.5)	0.9%
其他 Others	55 (-38.9)	0.6%
平均在香港港口停留時間 (包括停留在葵青貨櫃碼頭以外的時間) (小時) Average Time in Hong Kong Port (Including Time outside Kwai Tsing Container Terminals) (Hours)	14.3	

表 8
TABLE 8

2023 年按夏季吃水分析抵港遠洋輪船的船次
Ocean Vessel Arrivals by Summer Draft, 2023

夏季吃水 (米) Summer Draft (metres)	抵港船次 No. of Vessel Arrivals		比重百分率 Percentage Share
		(%)	
< 4	1 669	(+7.1)	8.8%
4 – < 6	1 906	(+0.1)	10.1%
6 – < 8	1 758	(+10.2)	9.3%
8 – < 10	5 361	(+4.8)	28.4%
10 – < 12	3 124	(+24.2)	16.6%
12 – < 14	2 448	(+22.1)	13.0%
14 – < 16	2 147	(+22.3)	11.4%
16 – < 18	110	(+57.1)	0.6%
≥ 18	344	(+60.7)	1.8%
總計 Total	18 867	(+12.7)	100.0%

表 9
TABLE 9

2023 年按船舶總長度分析抵港遠洋輪船的船次
Ocean Vessel Arrivals by Vessel Length Overall, 2023

船舶總長度 (米) Vessel Length Overall (metres)	抵港船次 No. of Vessel Arrivals		比重百分率 Percentage Share
		(%)	
< 50	634	(§)	3.4%
50 – < 100	3 030	(-5.5)	16.1%
100 – < 150	3 209	(-0.6)	17.0%
150 – < 200	5 575	(+10.6)	29.5%
200 – < 250	2 811	(+36.3)	14.9%
250 – < 300	1 968	(+23.4)	10.4%
300 – < 350	896	(+8.5)	4.7%
≥ 350	744	(+38.0)	3.9%
總計 Total	18 867	(+12.7)	100.0%

表 10
TABLE 10

2023 年按主要來港原因分析抵港遠洋輪船的船次
Ocean Vessel Arrivals by Main Reason of Call, 2023

主要來港原因 Main Reason of Call	抵港船次 No. of Vessel Arrivals		比重百分率 Percentage Share
		(%)	
裝貨及卸貨 Loading and Discharging Cargo	11 792	(-0.5)	62.5%
補給燃料 Bunkers	4 244	(+69.1)	22.5%
卸貨 Discharging Cargo	1 323	(-3.9)	7.0%
交換文件 Switch Documents	578	(+63.3)	3.1%
船上用品補給 (燃料除外) Taking Stores (Except Bunkers)	237	(+5.8)	1.3%
裝貨 Loading Cargo	196	(+18.1)	1.0%
旅遊 (郵輪) Tour (Cruise)	162	(\$)	0.9%
船員變動 Change of Crew	79	(\$)	0.4%
消遣 / 運動 (遊艇) Pleasure/Sports (Pleasure Vessels)	62	(\$)	0.3%
遊樂 <i>Pleasure</i>	50	(\$)	0.3%
參與賽事 <i>Participate in racing event</i>	12	(\$)	0.1%
緊急修理或非例行入乾塢 Emergency Repair or Non-routine Dry Docking	17	(\$)	0.1%
例行入乾塢 Routine Dry Docking	2	(+100.0)	@
其他 Others	175	(-10.3)	0.9%
總計 Total	18 867	(+12.7)	100.0%

表 11
TABLE 11

2023 年按停泊地點及有否目的地分析抵港郵輪船次⁽¹⁾
Cruise Arrivals⁽¹⁾ by Berthing Location by Whether the Trip with Destination, 2023

停泊地點 ⁽³⁾ Berthing Location ⁽³⁾	有目的地 With Destination		公海 ⁽²⁾ High Seas ⁽²⁾		總計 Total	
	抵港 郵輪船次 No. of Cruise Arrivals	變動百分率 Percentage Change	抵港 郵輪船次 No. of Cruise Arrivals	變動百分率 Percentage Change	抵港 郵輪船次 No. of Cruise Arrivals	變動百分率 Percentage Change
海運碼頭 Ocean Terminal	27	-	0	-	27	-
啟德郵輪碼頭 Kai Tak Cruise Terminal	81	-	57	§	138	§
浮泡和碇泊處 Buoys and Anchorages	0	-	0	-	0	-
其他 ⁽⁴⁾ Others ⁽⁴⁾	0	-	0	-	0	-
總計 Total	108	-	57	§	165	§

註釋： 啟德郵輪碼頭及海運碼頭自 2020 年 2 月 5 日起暫停旅客清關服務。「公海遊」自 2021 年 7 月 30 日起復辦，自 2022 年 1 月 7 日起暫停，並於 2023 年 3 月 10 日起復辦。

Notes: Passenger clearance services at Kai Tak Cruise Terminal and Ocean Terminal have been suspended since 5 February 2020. "Cruise-to-nowhere" itineraries were resumed on 30 July 2021, suspended on 7 January 2022, and have been resumed since 10 March 2023.

- (1) 不包括非載客的船次，例如緊急修理、補充燃料等。
Excluding non-passenger carrying trips, e.g. emergency repair, bunkers, etc.
- (2) 根據海商法，公海的定義是指不屬於任何國家領海或內水的海域。
According to Maritime Law, High Seas is defined as the waters lying outside the territorial waters of any countries.
- (3) 如郵輪在進入香港水域後於超過一個地點停泊，停泊地點指停留時間最長的地點。
If a cruise berths at more than one location after entering into Hong Kong waters, the berthing location refers to the one with the longest stay.
- (4) 包括私人泊位和倉庫碼頭、船塢及葵青貨櫃碼頭。
Including private berths and wharves, docks, and Kwai Tsing Container Terminals.

表 12
TABLE 12

2023 年跨境客運碼頭⁽¹⁾的抵港及離港航次統計數字⁽²⁾
Statistics on Vessel Arrivals and Departures at Cross-Boundary Ferry Terminals⁽¹⁾⁽²⁾, 2023

來往 ⁽³⁾ From/To ⁽³⁾	運輸工具類別 Type of Carrier	提供服務的船隻 ／直升機數目 No. of Vessels/ Helicopters in Service		抵港 Arrivals			離港 Departures				
				航次 No. of Trips	淨噸位(千噸) NT ('000)	(%)	航次 No. of Trips	淨噸位(千噸) NT ('000)	(%)		
澳門 Macao	雙體船 Catamaran	18	(§)	14 377	(§)	3 086	(§)	14 400	(-)	3 091	(-)
	直升機 Helicopter	2	(-)	49	(-)	-	(-)	56	(-)	-	(-)
小計 – 澳門 Sub-total – Macao				14 426	(§)	3 086	(§)	14 456	(-)	3 091	(-)
虎門 Humén	雙體船 Catamaran	2	(-)	870	(-)	108	(-)	876	(-)	108	(-)
南沙 Nansha	雙體船 Catamaran	4	(-)	841	(-)	142	(-)	841	(-)	142	(-)
琶洲 Pazhou	雙體船 Catamaran	5	(-)	985	(-)	150	(-)	1 092	(-)	167	(-)
蛇口 Shekou	雙體船 Catamaran	17	(§)	4 498	(§)	618	(§)	4 546	(§)	624	(§)
深圳 Shenzhen	雙體船 Catamaran	9	(-)	1 612	(-)	220	(-)	1 616	(-)	221	(-)
	直升機 Helicopter	1	(-)	0	(-)	-	(-)	✕	(-)	-	(-)
順德 Shunde	雙體船 Catamaran	2	(-)	536	(-)	82	(-)	536	(-)	82	(-)
中山 Zhongshan	雙體船 Catamaran	4	(-)	3 440	(-)	560	(-)	3 439	(-)	559	(-)
珠海 Zhuhai	雙體船 Catamaran	7	(-)	2 702	(-)	431	(-)	2 776	(-)	443	(-)
小計 – 內河港口 Sub-total – River Trade Ports				15 484	(§)	2 311	(§)	15 723	(§)	2 346	(§)
總計 Total				29 910	(§)	5 397	(§)	30 179	(§)	5 437	(§)

註釋： (1) 包括港澳碼頭、中國客運碼頭及海天客運碼頭的統計。中國客運碼頭的跨境渡輪服務自 2020 年 1 月 30 日起暫停，並於 2023 年 1 月 8 日恢復，而港澳碼頭的跨境渡輪服務亦自 2020 年 2 月 4 日起暫停，並於 2023 年 1 月 8 日恢復。而海天客運碼頭除包租快船轉駁服務之外，來往香港國際機場與內地及澳門的定期快船轉駁服務自 2020 年 4 月起經已暫停，有關服務由 2020 年 10 月 28 日起逐步恢復。

Including Hong Kong - Macau Ferry Terminal, China Ferry Terminal and SkyPier. The cross-boundary ferry service at China Ferry Terminal was suspended on 30 January 2020 and has been resumed since 8 January 2023, while that at Hong Kong - Macau Ferry Terminal was suspended on 4 February 2020 and has been resumed since 8 January 2023. Except for the chartered ferry transfer services, the scheduled ferry transfer services at SkyPier between Hong Kong International Airport and the Mainland China and Macao were suspended in April 2020. Related services have been resumed gradually since 28 October 2020.

- (2) 數字不包括非載客的跨境渡輪船次。
Non-passenger carrying trips of cross-boundary ferry are excluded.
- (3) 指抵港航程的起點站或離港航程的終點站。
It refers to the origin of arrival trip or the destination of departure trip.
- ✕ 少於 5 程。
Less than 5 trips.

資料來源： 海事處客運碼頭組及香港國際機場客運碼頭服務有限公司

Data Sources: Ferry Terminals Section, Marine Department and Hong Kong International Airport Ferry Terminal Services Ltd.

表 13
TABLE 13

2023 年按船舶類型分析香港過境船舶的船次⁽¹⁾
Number of Vessel Trips Transit Hong Kong⁽¹⁾ by Ship Type, 2023

船舶類型 Ship Type	過境船次 No. of Vessel Trips Transit Hong Kong	
		(%)
全槽格式貨櫃船 Fully Cellular Container Vessel	19 475	(-0.4)
拖船 Tug	12 027	(+5.8)
半貨櫃船 Semi-container Vessel	1 035	(-12.1)
液化氣體運載船 Gas Carrier/Tanker	519	(+7.7)
普通貨船 Conventional Cargo Vessel	252	(-22.5)
散裝乾貨船/ 礦沙/散貨/油類混用船 Dry Bulk Carrier/ Ore/Bulk/Oil (OBO) Carrier	214	(-29.6)
其他 Others	465	(+52.5)
總計 Total	33 987	(+1.4)

註釋： (1) 只包括曾提供到達前通知書的過境香港水域船舶的船次。
Note: Including only those vessel trips transit Hong Kong waters with Pre-arrival Notification.

資料來源： 海事處船隻航行監察中心
Data Source: Vessel Traffic Centre, Marine Department

表 14
TABLE 14

2023 年按跨境客運碼頭分析抵港及離港乘客人次
Passenger Arrivals and Departures by Cross-Boundary Ferry Terminal, 2023

千乘客人次
'000 Passenger Journeys

來往 From/To	澳門 Macao	內河港口 River Trade Ports	總計 Total
	(%)	(%)	(%)
海事處轄下客運碼頭 ⁽¹⁾⁽²⁾ Marine Ferry Terminals ⁽¹⁾⁽²⁾	6 135 (-)	1 401 (-)	7 536 (-)
港澳碼頭 ⁽³⁾ Hong Kong - Macau Ferry Terminal ⁽³⁾	6 120 (-)	329 (-)	6 448 (-)
中國客運碼頭 China Ferry Terminal	15 (-)	1 073 (-)	1 088 (-)
屯門客運碼頭 Tuen Mun Ferry Terminal	0 (-)	0 (-)	0 (-)
海天客運碼頭 ⁽⁴⁾⁽⁵⁾ SkyPier ⁽⁴⁾⁽⁵⁾	6 (§)	461 (§)	467 (§)
總計 Total	6 141 (§)	1 862 (§)	8 003 (§)

- 註釋： (1) 數字與入境事務處發布的統計數字並不相等，原因是入境事務處的數字包括無須付船費的乘客(例如不足一歲者)。
Notes: Figures do not tally with those released by the Immigration Department because figures of the Immigration Department cover passengers who are not required to pay fares (e.g. passengers less than one year of age).
- (2) 中國客運碼頭的跨境渡輪服務自 2020 年 1 月 30 日起暫停，並於 2023 年 1 月 8 日恢復，而港澳碼頭的跨境渡輪服務亦自 2020 年 2 月 4 日起暫停，並於 2023 年 1 月 8 日恢復。屯門客運碼頭的跨境渡輪服務自 2020 年 1 月 30 日起暫停，並於 2021 年 6 月 8 日終止。
The cross-boundary ferry service at China Ferry Terminal has been suspended since 30 January 2020 and has been resumed since 8 January 2023, while that at Hong Kong - Macau Ferry Terminal was suspended on 4 February 2020 and has been resumed since 8 January 2023. The cross-boundary ferry service at Tuen Mun Ferry Terminal was suspended on 30 January 2020 and was ceased on 8 June 2021.
- (3) 數字包括乘搭直升機的乘客人次。
Figures include helicopter passenger journeys.
- (4) 數字包括無須付船費的乘客(例如不足一歲者)。
Figures include passengers who are not required to pay fares (e.g. passengers less than one year of age).
- (5) 海天客運碼頭除包租快船轉駁服務之外，來往香港國際機場與內地及澳門的定期快船轉駁服務自 2020 年 4 月起經已暫停，有關服務由 2020 年 10 月 28 日起逐步恢復。
Except for the chartered ferry transfer services, the scheduled ferry transfer services at SkyPier between Hong Kong International Airport and the Mainland China and Macao have been suspended since April 2020. Related services have been resumed gradually since 28 October 2020.

資料來源： 海事處客運碼頭組及香港國際機場客運碼頭服務有限公司
Data Sources: Ferry Terminals Section, Marine Department and Hong Kong International Airport Ferry Terminal Services Ltd.

表 15
TABLE 15

2023 年按航線分析抵港及離港乘客人次
Passenger Arrivals and Departures by Route, 2023

A. 海事處轄下客運碼頭⁽¹⁾
Marine Ferry Terminals⁽¹⁾

來往 ⁽²⁾ From/To ⁽²⁾	運輸工具類別 Type of Carrier	抵港 Arrivals		離港 Departures	
		乘客人次(千) Passenger Journeys ('000)	載客率 Passenger Load Factor	乘客人次(千) Passenger Journeys ('000)	載客率 Passenger Load Factor
		(%)	(%)	(%)	(%)
澳門 Macao	雙體船 Catamaran	2 957 (-)	53.5% (-)	3 178 (-)	57.4% (-)
	直升機 Helicopter	† (-)	25.7% (-)	† (-)	37.2% (-)
小計 – 澳門 Sub-total – Macao		2 957 (-)	53.5% (-)	3 178 (-)	57.4% (-)
虎門 Humen	雙體船 Catamaran	1 (-)	65.4% (-)	1 (-)	59.1% (-)
南沙 Nansha	雙體船 Catamaran	58 (-)	23.8% (-)	52 (-)	21.4% (-)
琶洲 Pazhou	雙體船 Catamaran	17 (-)	26.4% (-)	10 (-)	10.7% (-)
蛇口 Shekou	雙體船 Catamaran	57 (-)	19.7% (-)	39 (-)	13.3% (-)
深圳 Shenzhen	雙體船 Catamaran	40 (-)	14.2% (-)	34 (-)	12.1% (-)
	直升機 Helicopter	0 (-)	- (-)	† (-)	16.7% (-)
順德 Shunde	雙體船 Catamaran	56 (-)	39.4% (-)	54 (-)	38.0% (-)
中山 Zhongshan	雙體船 Catamaran	296 (-)	43.0% (-)	303 (-)	44.0% (-)
珠海 Zhuhai	雙體船 Catamaran	195 (-)	26.1% (-)	188 (-)	24.4% (-)
小計 – 內河港口 Sub-total – River Trade Ports		720 (-)	29.3% (-)	681 (-)	27.1% (-)
海事處轄下客運碼頭 Marine Ferry Terminals		3 677 (-)	46.0% (-)	3 859 (-)	47.9% (-)

表 15 – 續
TABLE 15 – Cont'd

B. 海天客運碼頭⁽³⁾
SkyPier⁽³⁾

來往 ⁽²⁾ From/To ⁽²⁾	運輸工具類別 Type of Carrier	抵港 Arrivals		離港 Departures	
		乘客人次(千) Passenger Journeys ('000)	載客率 Passenger Load Factor	乘客人次(千) Passenger Journeys ('000)	載客率 Passenger Load Factor
		(%)	(%)	(%)	(%)
澳門 Macao	雙體船 Catamaran	3 (\$)	5.4% (\$)	3 (-)	5.7% (-)
小計 – 澳門 Sub-total – Macao		3 (\$)	5.4% (\$)	3 (-)	5.7% (-)
虎門 Humén	雙體船 Catamaran	26 (-)	14.8% (-)	23 (-)	13.0% (-)
琶洲 Pazhou	雙體船 Catamaran	28 (-)	14.3% (-)	18 (-)	9.6% (-)
蛇口 Shekou	雙體船 Catamaran	178 (+40.7)	21.8% (-46.9)	121 (\$)	14.7% (\$)
深圳 Shenzhen	雙體船 Catamaran	4 (-)	5.2% (-)	4 (-)	4.8% (-)
中山 Zhongshan	雙體船 Catamaran	33 (-)	12.5% (-)	26 (-)	9.7% (-)
小計 – 內河港口 Sub-total – River Trade Ports		269 (\$)	17.5% (-57.3)	192 (\$)	12.5% (\$)
海天客運碼頭 SkyPier		272 (\$)	17.2% (-58.2)	195 (\$)	12.3% (\$)

註釋： (1) 包括港澳碼頭、中國客運碼頭及海天客運碼頭的統計。中國客運碼頭的跨境渡輪服務自2020年1月30日起暫停，並於2023年1月8日恢復，而港澳碼頭的跨境渡輪服務亦自2020年2月4日起暫停，並於2023年1月8日恢復。

Notes: Including Hong Kong - Macau Ferry Terminal, China Ferry Terminal and SkyPier. The cross-boundary ferry service at China Ferry Terminal was suspended on 30 January 2020 and has been resumed since 8 January 2023, while that at Hong Kong - Macau Ferry Terminal was suspended on 4 February 2020 and has been resumed since 8 January 2023.

(2) 指抵港航程的起點站或離港航程的終點站。乘客人次包括在航程中其他站上落的乘客人次。
It refers to the origin of arrival trip or the destination of departure trip. Figures on passenger journeys include those boarding or alighting at other stop(s) of the trip.

(3) 海天客運碼頭除包租快船轉駁服務之外，來往香港國際機場與內地及澳門的定期快船轉駁服務自2020年4月起經已暫停，有關服務由2020年10月28日起逐步恢復。
Except for the chartered ferry transfer services, the scheduled ferry transfer services at SkyPier between Hong Kong International Airport and the Mainland China and Macao were suspended in April 2020. Related services have been resumed gradually since 28 October 2020.

資料來源： (A) 海事處客運碼頭組
Data Sources: Ferry Terminals Section, Marine Department
(B) 香港國際機場客運碼頭服務有限公司
Hong Kong International Airport Ferry Terminal Services Ltd.

表 16
TABLE 16

2023 年按主要貨物裝卸地點分析港口貨櫃吞吐量
Port Container Throughput by Main Cargo Handling Location, 2023

千個標準貨櫃單位
'000 TEUs

類別 Category	葵青貨櫃碼頭 Kwai Tsing Container Terminals			葵青貨櫃碼頭以外 Other than Kwai Tsing Container Terminals			總計 Total
	海運 Seaborne	河運 River	小計 Sub-total	海運 Seaborne	河運 River	小計 Sub-total	
裝上 Loaded	(%)	(%)	(%)	(%)	(%)	(%)	(%)
載貨貨櫃 Laden Container	3 415 (-15.9)	699 (-12.1)	4 113 (-15.3)	264 (+0.2)	889 (-7.0)	1 153 (-5.4)	5 266 (-13.3)
空貨櫃 Empty Container	762 (-16.2)	218 (-9.8)	980 (-14.8)	127 (+44.3)	490 (-26.7)	617 (-18.4)	1 597 (-16.3)
小計 Sub-total	4 177 (-15.9)	917 (-11.6)	5 093 (-15.2)	391 (+11.3)	1 379 (-15.1)	1 770 (-10.4)	6 864 (-14.0)
卸下 Discharged							
載貨貨櫃 Laden Container	4 078 (-14.5)	688 (-23.3)	4 766 (-15.9)	278 (-0.8)	1 007 (-22.6)	1 285 (-18.7)	6 051 (-16.5)
空貨櫃 Empty Container	1 152 (-1.7)	22 (-19.2)	1 174 (-2.1)	62 (+27.5)	251 (+18.9)	313 (+20.5)	1 487 (+2.0)
小計 Sub-total	5 229 (-12.0)	710 (-23.2)	5 940 (-13.5)	340 (+3.4)	1 258 (-16.8)	1 598 (-13.2)	7 538 (-13.4)
合計 Overall							
載貨貨櫃 Laden Container	7 492 (-15.1)	1 387 (-18.1)	8 879 (-15.6)	542 (-0.3)	1 896 (-16.0)	2 438 (-12.9)	11 317 (-15.0)
空貨櫃 Empty Container	1 914 (-8.0)	240 (-10.8)	2 154 (-8.3)	190 (+38.3)	741 (-15.8)	931 (-8.5)	3 084 (-8.4)
總計 Total	9 406 (-13.8)	1 627 (-17.1)	11 033 (-14.3)	731 (+7.5)	2 637 (-15.9)	3 368 (-11.7)	14 401 (-13.7)

資料來源：政府統計處電子貿易服務及貨運統計組

Data Source: Electronic Trading Services and Cargo Statistics Section, Census and Statistics Department

表 17
TABLE 17

2023 年按貨物種類及運輸方式劃分的裝卸港口貨物
Port Cargo Discharged/Loaded by Cargo Type and Mode of Transport, 2023

千公噸
'000 Tonnes

貨物種類 Cargo Type	海運 Seaborne			河運 River			總計 Total		
	卸下 Discharged	裝上 Loaded	小計 Sub-total	卸下 Discharged	裝上 Loaded	小計 Sub-total	卸下 Discharged	裝上 Loaded	小計 Sub-total
	(%)	(%)	(%)	(%)	(%)	(%)	(%)	(%)	(%)
包裝散貨 Break bulk cargo	3 264 (-20.3)	97 (-12.0)	3 361 (-20.0)	1 584 (-20.7)	644 (-21.1)	2 229 (-20.8)	4 849 (-20.4)	741 (-20.1)	5 590 (-20.4)
貨櫃貨物 Containerised cargo	51 056 (-13.6)	38 414 (-13.7)	89 470 (-13.6)	15 924 (-16.2)	20 503 (-8.6)	36 427 (-12.1)	66 980 (-14.2)	58 917 (-12.0)	125 898 (-13.2)
無包裝液態散貨 Unpacked liquid bulk cargo	13 141 (+25.6)	219 (-4.7)	13 360 (+25.0)	547 (+23.9)	63 (+11.1)	611 (+22.5)	13 689 (+25.6)	282 (-1.6)	13 971 (+24.9)
無包裝固態散貨 Unpacked solid bulk cargo	8 589 (-22.2)	359 (-23.9)	8 947 (-22.2)	17 583 (+17.5)	2 878 (+19.4)	20 461 (+17.7)	26 172 (+0.7)	3 237 (+12.4)	29 409 (+1.8)
總計 Total	76 050 (-10.2)	39 088 (-13.8)	115 139 (-11.4)	35 638 (-2.1)	24 089 (-6.3)	59 727 (-3.8)	111 689 (-7.7)	63 177 (-11.1)	174 866 (-9.0)

表 18
TABLE 18
政府繫泊浮泡統計數字
Government Mooring Buoys Statistics

A. 數目 (年底數字) Number (Figures as at end of the year)	2022	2023
"A 級" 政府繫泊浮泡數目 No. of "A Class" Government Mooring Buoys	11	11
"B 級" 政府繫泊浮泡數目 No. of "B Class" Government Mooring Buoys	4	4

B. 使用情況 Usage	2022	2023
"A 級" 政府繫泊浮泡訂用日數 Days booked for "A Class" Government Mooring Buoys	13	14
"B 級" 政府繫泊浮泡訂用日數 Days booked for "B Class" Government Mooring Buoys	28	12
"A 級" 政府繫泊浮泡訂用百分率 Percentage of "A Class" Government Mooring Buoys used based on booking	0.3%	0.35%
"B 級" 政府繫泊浮泡訂用百分率 Percentage of "B Class" Government Mooring Buoys used based on booking	1.9%	0.82%
上述數字只顯示訂用情況，實際使用率則如下： Whilst the above figures are indicative of booking usage, the actual physical occupancy rates are as follows:		
"A 級" 政府繫泊浮泡 "A Class" Government Mooring Buoys	0.3%	0.27%
"B 級" 政府繫泊浮泡 "B Class" Government Mooring Buoys	1.4%	0.62%

表 18 – 續
TABLE 18 – Cont'd

C. 浮泡及側面標記保養 Maintenance of Buoys and Lateral Marks		2022	2023
按期保養的燈浮標	Light Buoys maintained	153	155
按期保養的養魚區浮泡	Mariculture Buoys maintained	178	178
按期保養的側面標記	Lateral Marks maintained	35	41
按期保養的小型繫泊浮泡	Minor Mooring Buoys maintained	132	139
按期保養的大型繫泊浮泡	Major Mooring Buoys maintained	31	31
按期保養的 "A 級" 政府繫泊浮泡	"A Class" Government Mooring Buoys maintained	11	11
按期保養的 "B 級" 政府繫泊浮泡	"B Class" Government Mooring Buoys maintained	4	4

資料來源： (A) & (B) 海事處船隻航行監察中心
Data Sources: Vessel Traffic Centre, Marine Department

(C) 海事處港口後勤組
Port Logistics Section, Marine Department

表 19
TABLE 19

按分布地點分析香港私人繫泊設備數目 (截至 2023 年年底)
Number of Private Moorings Laid in Hong Kong by Location (as at end 2023)

地點	Location	私人繫泊設備 數目 Number of Private Moorings
香港仔南避風塘及銅鑼灣避風塘	Aberdeen South Typhoon Shelter and Causeway Bay Typhoon Shelter	
香港仔南避風塘 (白沙灣)	Aberdeen South Typhoon Shelter (Pak Sha Wan)	1
香港仔南避風塘 (布廠灣)	Aberdeen South Typhoon Shelter (Po Chong Wan)	350
銅鑼灣避風塘	Causeway Bay Typhoon Shelter	296
小計	Sub-total	647
其他避風塘及 維多利亞港口界限以內的其他地方	Other Typhoon Shelters and Elsewhere within the Limits of Victoria Port	
長洲避風塘	Cheung Chau Typhoon Shelter	9
喜靈州避風塘	Hei Ling Chau Typhoon Shelter	18
荔枝角	Lai Chi Kok	3
新油麻地避風塘	New Yau Ma Tei Typhoon Shelter	16
新油麻地避風塘 (防波堤外)	New Yau Ma Tei Typhoon Shelter (Outside Breakwater)	33
油麻地錨地以北	North of Yau Ma Tei Anchorage	1
藍巴勒海峽避風塘 (防波堤外)	Rambler Channel Typhoon Shelter (Outside Breakwater)	6
三家村避風塘	Sam Ka Tsuen Typhoon Shelter	1
汀九	Ting Kau	63
土瓜灣	To Kwa Wan	4
青衣北	Tsing Yi North	4
荃灣	Tsuen Wan	90
屯門避風塘	Tuen Mun Typhoon Shelter	6
小計	Sub-total	254

表 19 – 續
TABLE 19 – Cont'd

地點	Location	私人繫泊設備 數目 Number of Private Moorings
在香港水域內的其他地方	Elsewhere in the Waters of Hong Kong	
香港仔西避風塘 (防波堤外)	Aberdeen West Typhoon Shelter (Outside Breakwater)	13
赤徑口 (大灘海峽)	Chek Keng Hau (Long Harbour)	0
長沙欄	Cheung Sha Lan	33
娥眉灣	Crescent Bay	1
愉景灣	Discovery Bay	6
下尾灣 (南丫島發電廠)	Ha Mei Wan (Lamma Island Power Station)	3
白沙灣	Hebe Haven	671
滘西洲	Kau Sai Chau	4
高塘口 (大灘海峽)	Ko Tong Hau (Long Harbour)	1
鹿洲灣	Luk Chau Wan	1
龍鼓灘	Lung Kwu Tan	1
熨波洲	Middle Island	92
稔樹灣	Nim Shue Wan	10
北大嶼山	North Lantau Island	1
船灣海	Shuen Wan Hoi	37
赤柱正灘	Stanley Main Beach	4
大美督	Tai Mei Tuk	32
大網仔	Tai Mong Tsai	7
大網仔 (阿公灣)	Tai Mong Tsai (A Kung Wan)	3
大潭港	Tai Tam Harbour	48
斬竹灣	Tsam Chuk Wan	10
青衣西	Tsing Yi West	2
早禾坑	Tso Wo Hang	82
屯門避風塘 (防波堤外)	Tuen Mun Typhoon Shelter (Outside Breakwater)	6
往灣 (黃竹角海)	Wong Wan (Wong Chuk Kok Hoi)	1
烏溪沙烏龜沙咀	Wu Kwai Sha Tsui (Wu Kai Sha)	1
榕樹灣	Yung Shue Wan	2
小計	Sub-total	1 072
總計	Total	1 973

資料來源： 海事處私用繫泊分組
Data Source: Private Mooring Sub-unit, Marine Department

表 20
TABLE 20
碇泊處一覽 (截至 2023 年年底)
List of Anchorages (as at end 2023)

碇泊處 Anchorages	面積 (公頃) Area (hectares)
A. 檢疫及入境船隻碇泊處 Quarantine and Immigration Anchorages	
1. 東面檢疫及入境船隻碇泊處 Eastern Quarantine and Immigration Anchorage	35.1
2. 屯門入境船隻碇泊處 Tuen Mun Immigration Anchorage	89.9
3. 西面檢疫及入境船隻碇泊處 Western Quarantine and Immigration Anchorage	121.1
小計 Sub-total	246.1
B. 危險品碇泊處 Dangerous Goods Anchorages	
1. 將軍澳危險品碇泊處 Junk Bay Dangerous Goods Anchorage	28.9
2. 交椅洲危險品碇泊處 Kau Yi Chau Dangerous Goods Anchorage	288.2
3. 大鵬灣危險品碇泊處 Mirs Bay Dangerous Goods Anchorage	316.5
4. 糧船灣海危險品碇泊處 Rocky Harbour Dangerous Goods Anchorage	26.9
5. 南丫島南危險品碇泊處 South Lamma Dangerous Goods Anchorage	228.5
6. 荃灣危險品碇泊處 Tsuen Wan Dangerous Goods Anchorage	61.9
7. 西面危險品碇泊處 Western Dangerous Goods Anchorage	145.6
8. 危險品留用碇泊處 Reserved Dangerous Goods Anchorage	37.3
小計 Sub-total	1 133.8
C. 維修碇泊處 Servicing Anchorages	
1. 奇力 1 號碇泊處 Kellett Anchorage No.1	77.1
2. 奇力 2 號碇泊處 Kellett Anchorage No.2	258.5
3. 奇力 3 號碇泊處 Kellett Anchorage No.3	116.2
4. 馬灣碇泊處 Ma Wan Anchorage	138.4
5. 南丫島北碇泊處 North Lamma Anchorage	375.1
6. 南丫島西北碇泊處 North-west Lamma Anchorage	553.9
7. 半山石碇泊處 Pun Shan Shek Anchorage	352.1
8. 深水角 1 號碇泊處 Sham Shui Kok Anchorage No.1	72.6
9. 深水角 2 號碇泊處 Sham Shui Kok Anchorage No.2	35.6
10. 西面 1 號碇泊處 Western Anchorage No.1	310.6
11. 西面 2 號碇泊處 Western Anchorage No.2	278.7
12. 西面 3 號碇泊處 Western Anchorage No.3	272.4
13. 油麻地碇泊處 Yau Ma Tei Anchorage	105.0
小計 Sub-total	2 946.2

表 20 – 續
TABLE 20 – Cont'd

碇泊處 Anchorages		面積 (公頃) Area (hectares)
D. 領航指明碇泊處⁽¹⁾ Pilotage Specified Anchorages⁽¹⁾		
1. 南丫島東南碇泊處	South-east Lamma Anchorage	285.5
2. 南丫島西南碇泊處	South-west Lamma Anchorage	228.4
3. 龍鼓水道碇泊處	Urmston Road Anchorage	190.0
小計	Sub-total	703.9
E. 多用途碇泊處 Multi-purpose Anchorage		
1. 長洲南碇泊處	South Cheung Chau Anchorage	366.1
F. 避風碇泊處⁽²⁾ Sheltered Anchorages⁽²⁾		
1. 柴灣貨物裝卸灣	Chai Wan Cargo Basin	11.2
2. 長沙欄	Cheung Sha Lan	6.7
3. 吉澳	Kat O	1.6
4. 熨波洲	Middle Island	6.9
5. 稔樹灣	Nim Shue Wan	2.3
6. 白沙灣	Pak Sha Wan (Hebe Haven)	84.0
7. 西貢	Sai Kung	4.3
8. 沙頭角	Sha Tau Kok	0.6
9. 船灣海	Shuen Wan Hoi	26.0
10. 聖士提反灣	St. Stephen's Bay	1.3
11. 大美督	Tai Mei Tuk	12.3
12. 大澳	Tai O	4.0
13. 大潭港	Tai Tam Harbour	5.7
14. 汀九	Ting Kau	0.7
15. 斬竹灣	Tsam Chuk Wan (Jade Bay)	7.5
16. 將軍澳	Tseung Kwan O	3.4
17. 荃灣	Tsuen Wan	3.7
小計	Sub-total	182.2
總計	Total	5 578.3

註釋：(1) 領航指明碇泊處共有六處，其中將軍澳危險品碇泊處、大鵬灣危險品碇泊處及南丫島南危險品碇泊處包括在危險品碇泊處類別內。

Notes: There were six Pilotage Specified Anchorages, of which Junk Bay Dangerous Goods Anchorage, Mirs Bay Dangerous Goods Anchorage and South Lamma Dangerous Goods Anchorage are included in the category of Dangerous Goods Anchorages.

(2) 不包括灣仔貨物裝卸灣。
Excluding Wan Chai Cargo Basin.

資料來源：海事處策劃、發展協調及港口保安部

Data Source: Planning, Development & Port Security Branch, Marine Department

表 21
TABLE 21
避風塘一覽 (截至 2023 年年底)
List of Typhoon Shelters (as at end 2023)

避風塘	Typhoon Shelters	面積 (公頃) Area (hectares)
1. 香港仔南避風塘	Aberdeen South Typhoon Shelter	26.1
2. 香港仔西避風塘	Aberdeen West Typhoon Shelter	34.2
3. 銅鑼灣避風塘	Causeway Bay Typhoon Shelter	14.2
4. 長洲避風塘	Cheung Chau Typhoon Shelter	50.0
5. 喜靈洲避風塘	Hei Ling Chau Typhoon Shelter	75.6
6. 觀塘避風塘	Kwun Tong Typhoon Shelter	33.8
7. 新油麻地避風塘	New Yau Ma Tei Typhoon Shelter	64.6
8. 藍巴勒海峽避風塘	Rambler Channel Typhoon Shelter	12.9
9. 三家村避風塘	Sam Ka Tsuen Typhoon Shelter	1.9
10. 筲箕灣避風塘	Shau Kei Wan Typhoon Shelter	17.2
11. 船灣避風塘	Shuen Wan Typhoon Shelter	10.3
12. 土瓜灣避風塘	To Kwa Wan Typhoon Shelter	14.8
13. 屯門避風塘	Tuen Mun Typhoon Shelter	56.8
14. 鹽田仔避風塘	Yim Tin Tsai Typhoon Shelter	9.2
總計	Total	421.6

資料來源：海事處策劃、發展協調及港口保安部
Data Source: Planning, Development & Port Security Branch, Marine Department

表 22
TABLE 22
公眾貨物裝卸區一覽 (截至 2023 年年底)
List of Public Cargo Working Areas (as at end 2023)

公眾貨物裝卸區	Public Cargo Working Areas	面積 (公頃) Area (hectares)	符合發牌條件之 停泊位長度 (米) Licensable Seafrontage (metres)
1. 柴灣公眾貨物裝卸區	Chai Wan Public Cargo Working Area	2.1	548
2. 新油麻地公眾貨物裝卸區	New Yau Ma Tei Public Cargo Working Area	6.8	1 212
3. 藍巴勒海峽公眾貨物裝卸區	Rambler Channel Public Cargo Working Area	4.1	1 036
4. 昂船洲公眾貨物裝卸區	Stonecutters Island Public Cargo Working Area	2.9	560
5. 屯門公眾貨物裝卸區	Tuen Mun Public Cargo Working Area	3.3	616
6. 西區公眾貨物裝卸區	Western District Public Cargo Working Area	3.3	856
總計	Total	22.5	4 828

資料來源：海事處貨物裝卸組
Data Source: Cargo Handling Section, Marine Department

表 23
TABLE 23

垃圾收集、油污和檢控個案統計數字
Refuse Collection, Oil Pollution and Prosecution Statistics

A. 垃圾收集和油污事故
Refuse Collection and Oil Pollution Incident

		2022	2023
1. 收集海上垃圾 (公噸) ⁽¹⁾	Marine refuse collected (tonnes) ⁽¹⁾	2 662	2 404
2. 接報的疑似油污事故 (宗)	Alleged oil pollution incidents reported (cases)	125	154

B. 檢控個案統計數字
Prosecution Statistics

罪行 Offence	法庭審結案件 No. of Cases Concluded by Courts		定罪案件 No. of Cases Convicted		罰款 Fine (HK\$)	
	2022	2023	2022	2023	2022	2023
1. 違反碰撞規例 Breach of collision regulations	13	16	13	16	25,500	33,000
2. 違反牌照／准許證條件 Breach of licence/permit conditions	130	209	129	205	156,600	232,900
3. 未獲允許運載乘客／超額運載乘客 Carrying passengers without permission/excessive passengers	52	27	52	27	56,500	31,200
4. 不遵從指示 Failing to comply with direction	3	32	3	30	6,200	82,400
5. 沒有確保受僱人在工程進行時戴著適當的安全頭盔 Failing to ensure the person employed to wear an appropriate safety helmet when works are being carried out	28	27	28	27	53,500	69,800
6. 未獲允許讓 (e) 段船隻緊靠船舶而停放 Paragraph (e) vessel lying alongside ship without permission	1	1	1	1	800	800
7. 靠泊於已展示禁止船隻靠泊告示的岸壁／登岸梯級 Lying alongside seawall/landing steps prohibited by notice	23	20	23	20	22,000	19,300
8. 在航船隻上沒有合格船長／輪機員 No qualified master/engineer on board underway vessel	73	186	73	185	65,250	209,900
9. 在沒有有效驗船證明書的情況下操作船隻 Operating a vessel without valid certificate of survey	16	18	16	18	13,800	17,600
10. 沒持有有效證明書的人進行貨物處理 Person carrying out cargo handling without valid certificates	21	20	21	20	41,500	38,800
11. 超速行駛 Steaming in excessive speed	81	78	77	78	79,850	81,300
12. 使用沒有第三者風險保險的船隻 Using a vessel not insured against third party risk	9	23	9	23	10,100	27,200
13. 船隻未有領牌／並無有效牌照 Vessel was not licensed/did not have a valid licence	323	589	312	574	401,900	995,750
14. 其他海事罪行 (不包括定額罰款通知書) ⁽²⁾ Other marine offences (excluding Fixed Penalty Notices) ⁽²⁾	267	462	260	453	339,100	611,610
總計 Total	1 040	1 708	1 017	1 677	1,272,600	2,451,560

表 23 – 續
TABLE 23 – Cont'd

註釋： (1) 因應政府帳目委員會報告書的建議，海事處收集海上垃圾從 2021 年起是根據環境保護署紀錄的實際重(公噸)計算。海上垃圾包括海事處收集到的船舶垃圾、漂浮垃圾，以及本地領牌船隻和內河船隻的垃圾。

In response to the recommendation of the Public Accounts Committee's Report, the actual weight of marine refuse collected by the Marine Department in tonnes is used in accordance with the Environmental Protection Department's records with effective from 2021. Marine refuse collected includes refuse collected from ships, floating refuse and refuse collected from locally licensed vessels and river trade vessels by the Marine Department.

(2) 數字已調整為不包括定額罰款通知書。

The figures have been adjusted for excluding Fixed Penalty Notices.

資料來源： (A) 海事處港口後勤組
Data Sources: Port Logistics Section, Marine Department

(B) 海事處檢控小組
Prosecution Unit, Marine Department

表 24
TABLE 24

按噸位等級分析香港領牌船隻 (截至 2023 年年底)
Hong Kong Licensed Vessels by Tonnage Classification (as at end 2023)

類型 Type	≤60 淨噸位 ≤60 NT	>60 – 300 淨噸位 >60 – 300 NT	>300 淨噸位 >300 NT	總計 ⁽¹⁾⁽²⁾ Total ⁽¹⁾⁽²⁾	
第 I 類	Class I				
(a) 渡輪船隻	Ferry Vessel	8	30	9	47
(b) 水上食肆	Floating Restaurant	0	0	1	1
(c) 小輪	Launch	204	61	2	267
(d) 多用途船隻	Multi-purposes Vessel	10	5	0	15
(e) 原始船隻	Primitive Vessel	62	1	0	63
(f) 固定船隻	Stationary Vessel	0	0	0	0
小計	Sub-total	284	97	12	393
第 II 類	Class II				
(a) 起重機躉船	Crane Barge	0	2	3	5
(b) 危險品運輸船	Dangerous Goods Carrier	0	11	15	26
(c) 挖泥船	Dredger	0	7	0	7
(d) 乾貨貨船	Dry Cargo Vessel	35	51	16	102
(e) 非自航駁船	Dumb Lighter	23	49	432	504
(f) 食油運輸船	Edible Oil Carrier	0	0	10	10
(g) 平面工作躉	Flat-top Work Barge	22	20	16	58
(h) 浮塢	Floating Dock	0	0	2	2
(i) 水上工場	Floating Workshop	0	1	0	1
(ia) 氣體運輸船 ⁽³⁾	Gas Carrier ⁽³⁾	0	0	1	1
(j) 開底躉船	Hopper Barge	0	3	16	19
(k) 登岸平台	Landing Platform	48	0	0	48
(l) 登岸浮躉	Landing Pontoon	33	35	12	80
(m) 有毒液體物質 運輸船	Noxious Liquid Substance Carrier	0	0	0	0
(n) 石油運輸船	Oil Carrier	16	99	48	163
(o) 領港船	Pilot Boat	24	0	0	24
(p) 特別用途船隻	Special Purpose Vessel	21	14	27	62
(q) 固定船隻	Stationary Vessel	103	24	4	131
(r) 交通船	Transportation Boat	27	0	0	27
(s) 交通舢舨	Transportation Sampan	53	0	0	53
(t) 拖船	Tug	103	90	0	193
(u) 供水船	Water Boat	12	5	0	17
(v) 工作船	Work Boat	273	8	0	281
小計	Sub-total	793	419	602	1 814

表 24 – 續
TABLE 24 – Cont'd

類型	Type	≤60 淨噸位 ≤60 NT	>60 – 300 淨噸位 >60 – 300 NT	>300 淨噸位 >300 NT	總計 ⁽¹⁾⁽²⁾ Total ⁽¹⁾⁽²⁾
第 III 類	Class III				
(a) 運魚船	Fish Carrier	13	10	0	23
(b) 漁船舢舨	Fishing Sampan	1 829	0	0	1 829
(c) 漁船	Fishing Vessel	469	1 011	6	1 486
(d) 舷外機開敞式 舢舨	Outboard Open Sampan	2 922	0	0	2 922
小計	Sub-total	5 233	1 021	6	6 260
第 IV 類	Class IV				
(a) 機械輔助帆船	Auxiliary Powered Yacht	N.A.	N.A.	N.A.	807
(b) 遊樂船	Cruiser	N.A.	N.A.	N.A.	2 949
(c) 開敞式遊樂船	Open Cruiser	N.A.	N.A.	N.A.	8 797
小計	Sub-total	N.A.	N.A.	N.A.	12 553
總計	Total	6 310⁽⁴⁾	1 537⁽⁴⁾	620⁽⁴⁾	21 020

註釋： (1) 包括 182 艘閑置船隻。

Notes: Including 182 laid-up vessels.

(2) 不包括根據《商船(本地船隻)(住家船隻)規例》(第 548A 章)領牌的 3 艘住家船隻。

Not including 3 dwelling vessels which are licensed under the Merchant Shipping (Local Vessels) (Dwelling Vessels) Regulation (Cap. 548A).

(3) 自 2023 年 5 月 5 日起，氣體運輸船納入為第 II 類船隻。

A gas carrier was added under Class II vessels w.e.f. 5 May 2023.

(4) 不包括第 IV 類領牌船隻的數字。

Not including Class IV licensed vessels.

資料來源： 海事處牌照及關務組

Data Source: Licensing and Port Formalities Section, Marine Department

表 25
TABLE 25
船舶安全統計數字
Ship Safety Statistics

A. 貨船安全統計數字 Cargo Ships Safety Statistics	2022	2023
香港註冊貨船品質審查／檢驗 Hong Kong Registered Cargo Ships Quality Checked/Inspected		
1. 品質審查的香港註冊貨船數目 No. of quality checks on Hong Kong registered cargo ships	2 197	2 156
2. 品質檢驗和稽核貨船數目 No. of quality assurance inspections and audits (i.e. Flag State Quality Control Audit) and company visits	283	244
3. 審核船體、機械和設備圖則數目 No. of plans examined in respect of hull, machinery and equipment	109	132
貨船設備安全證明書 Cargo Ship Safety Equipment Certificate (SEC)		
1. 所簽發的豁免證明書數目 No. of exemption certificates issued	1 878	1 190
2. 應其他國家機關要求而檢驗的外來船舶，以簽發設備安全證明書 Foreign ships surveyed at the request of other national authorities for the issue of SEC	0	0
貨船無線電安全證明書 Cargo Ship Safety Radio Certificate (SRC)		
1. 所簽發的豁免證明書數目 No. of exemption certificates issued	451	217
2. 應其他國家機關要求而檢驗的外來船舶，以簽發無線電安全證明書 Foreign ships surveyed at the request of other national authorities for the issue of SRC	0	0
其他 Others		
1. 所簽發的《海員培訓、發證和值班標準國際公約》最低安全配員證明書 Standards of Training, Certification and Watchkeeping Minimum Safe Manning Certificate issued	336	485
2. 對構造安全、設備安全、無線電安全證明書的監察，包括中期檢驗 Safety Construction, Equipment and Radio Certificates monitored (including intermediate surveys)	1 174	1 250
3. 對國際載重線證明書的監察，包括定期檢驗 International Load Line Certificate monitored (including periodic surveys)	386	352
4. 對國際防止油污證明書、油污損害民事責任保險證明書或其他保證證明書及燃油污染損害民事責任保險證明書或其他經濟擔保證明書的監察 – 續期、年度／中期檢驗 International Oil Pollution Prevention (IOPP) Certificate, Certificate of Insurance or Other Financial Security in Respect of Civil Liability for Oil Pollution Damage and Certificate of Insurance or Other Financial Security in Respect of Civil Liability for Bunker Oil Pollution Damage monitored (including renewal, annual/intermediate surveys)	3 630	3 111
5. 對新船公司所作的國際安全管理稽核 International Safety Management (ISM) audits of new shipping companies	19	5
6. 其他檢驗 (例如合格證明書) Other surveys (e.g. Certificates of Fitness)	0	0

表 25 – 續
TABLE 25 – Cont'd

B. 客船安全統計數字 Passenger Ships Safety Statistics	2022	2023
乘客定額及船舶安全證明書 Passenger and Ship Safety Certificates		
1. 客船安全證明書 – 國際航線 Passenger Ship Safety Certificate (PSSC) – International Voyage	0	0
2. 客船安全證明書 – 短途國際航線 Passenger Ship Safety Certificate (PSSC) – Short International Voyage	3	2
3. 高速船安全證明書 – 內河航限 High Speed Craft Safety Certificate (HSCSC) – River Trade Limits	8	21
4. 延長客船安全證明書有效期 Extensions to PSSC	0	0
5. 高速船安全證明書檢驗船舶總數 Total no. of vessels surveyed for HSCSC	6	21
6. 受檢驗的客船無線電裝置 Passenger ship radio installations surveyed	4	21
7. 所簽發的載重線證明書數目 No. of Load Line Certificates issued	0	6
8. 所簽發的載重線豁免證明書數目 No. of Load Line Exemption Certificates issued	1	15
9. 所簽發的國際防止油污證明書及增補數目 No. of IOPP Certificates with Supplement issued	1	8
10. 所簽發的國際防止油污豁免證明書數目 No. of IOPP Exemption Certificates issued	0	0
11. 所簽發的最低安全配員證明書數目 No. of Minimum Safe Manning Certificates issued	0	0
12. 對船公司所作的國際安全管理稽核 ISM audits of shipping companies	3	2
13. 對船舶所作的國際安全管理稽核 ISM audits of ships	1	25
14. 所簽發的國際安全管理稽核符合證明數目 No. of ISM Document of Compliance issued	1	1
15. 所簽發的國際安全管理稽核安全管理證明書數目 No. of ISM Safety Management Certificates issued	0	10
16. 所簽發的臨時國際安全管理稽核安全管理證明書數目 No. of Interim ISM Safety Management Certificates issued	1	10
雜項檢查、圖則審核和設備 Miscellaneous Inspection, Plans Approval and Equipment		
1. 審核客船船體、機械和設備圖則數目 No. of plans examined for hull, machinery and equipment of passenger ships	20	45
2. 簽發檢查證明書、雜項檢驗／檢查數目 No. of certificates of inspection issued, miscellaneous surveys/inspections	12	33

表 25 – 續
TABLE 25 – Cont'd

C. 港口國監督統計數字 Port State Control Statistics	2022	2023
在香港特別行政區港口內進行的港口國監督檢查／安全檢查⁽¹⁾⁽²⁾⁽³⁾： Port State Control Inspections/Safety Inspections⁽¹⁾⁽²⁾⁽³⁾ in the Harbour of the Hong Kong Special Administrative Region:		
1. 在履行身為港口國監督委員而對《東京諒解備忘錄》應有的責任下，受港口國監督檢查的個別外來船舶數目 (遠洋船舶) No. of individual foreign ships inspected under the obligation to Tokyo Memorandum of Understanding (MOU), as a member Port State of the Committee (ocean-going vessels)	240	475
2. 受安全檢查的個別內地註冊／領牌船舶數目 (沿岸船舶) No. of individual Mainland registered/licensed vessels inspected (coastal vessels)	0	0
3. 對遠洋及沿岸船舶進行港口國監督檢查／安全檢查(包括複檢) 總次數 Total no. of Port State Control Inspections/Safety Inspections (including re-inspections) carried out on ocean-going and coastal vessels	257	519
4. 因低於安全標準而被扣留在港的遠洋及沿岸船舶總次數 Total no. of detentions of sub-standard ocean-going and coastal vessels in Hong Kong	6	17

註釋：(1) 就港口國監督檢查／安全檢查方面而言，遠洋船舶是指懸掛中國（不包括香港註冊）或外國旗的公約船舶和懸掛外國旗的非公約船舶，而沿岸船舶是指中國內地註冊／領牌的非公約船舶。

For Port State Control Inspection/Safety Inspections, ocean-going vessels refer to those convention ships flying flags of China (excluding Hong Kong registered) or foreign countries, and non-convention ships registered with foreign countries. Coastal vessels are those non-convention ships registered with/licensed by the Mainland of China.

(2) 由於 2019 冠狀病毒病疫情，以致 2022 年和 2023 年的船隻檢查數字與往年比較大幅減少。
The drastic decreases in the number of vessels inspected in 2022 and 2023 were due to the COVID-19 pandemic.

(3) 在東京諒解備忘錄秘書處宣布停止 2019 冠狀病毒病疫情相關的臨時措施後，對遠洋船舶的檢查於 2023 年 5 月才全面恢復。
Inspection on Ocean-going vessels only fully resumed in May 2023 after Tokyo MOU Secretariat had announced the ceasing/deactivation of temporary measures relating to COVID-19 pandemic.

資料來源：(A) 海事處貨船安全組
Data Sources: Cargo Ships Safety Section, Marine Department

(B) 海事處客船安全組
Passenger Ships Safety Section, Marine Department

(C) 海事處港口國監督組
Port State Control Section, Marine Department

表 26
TABLE 26

本地船隻安全／海事工業安全／海事意外統計數字
Local Vessels Safety/Marine Industrial Safety/Marine Accidents Statistics

A. 本地船隻的檢驗和檢查統計數字 Statistics on Surveys and Inspections of Local Vessels	2022	2023
I. 給本地船隻簽發／批註的證明書／法定文書 Certificates/Statutory Instrument Issued/Endorsed to Local Vessels <ol style="list-style-type: none"> 1. 簽發乾舷勘定證明書數目 No. of Freeboard Assignment Certificates issued 2. 簽發安全設備檢驗紀錄數目 No. of Survey Records of Safety Equipment issued 3. 簽發香港載重線證明書數目 No. of Hong Kong Load Line Certificates issued 4. 簽發／批註 HKNLS 證書數目 No. of HKNLS Certificate issued/endorsed 5. 簽發適合運載危險品聲明數目 No. of Declarations of Fitness for the Carriage of Dangerous Goods issued 6. 簽發 HKOPP 證書數目 No. of HKOPP Certificates issued 7. 簽發／批註 HKAPP 證書數目 No. of HKAPP Certificates issued/endorsed 8. 簽發驗船證明書數目 No. of Certificates of Survey issued <ul style="list-style-type: none"> – 第 I 類 Class I – 第 II 類 Class II – 第 III 類 Class III – 第 IV 類 Class IV 		
總計 Total	4 820*	4 809
II. 審批圖則 Plan Examination <ol style="list-style-type: none"> 1. 審批圖則數目 No. of Plans approved <ul style="list-style-type: none"> – 審批新建本地船隻圖則 Approval of Plans for New Building of Local Vessels – 審批改裝本地船隻圖則 Approval of Plans for Alteration of Local Vessels 2. 複驗由合資格驗船師驗核准的圖則數目 No. of Audit Check of Plans Approved by Competent Surveyor 		
總計 Total	3 124*	2 217

表 26 – 續
TABLE 26 – Cont'd

A. 本地船隻的檢驗和檢查統計數字 (續) Statistics on Surveys and Inspections of Local Vessels (Cont'd)	2022	2023
III. 檢驗本地船隻次數 Inspection Visits Made to Local Vessels		
1. 執行其他政府部門要求檢查的船隻數目 No. of Inspections of Vessels for Other Government Departments	125	95
2. 檢驗碰撞後破損的本地船隻次數 No. of Inspection Surveys of Damaged Local Vessels after Collision	31	24
3. 抽查及複驗本地船隻次數 No. of Spot Checks and Audit Checks on Local Vessels	190	185
4. 在香港境外檢驗本地船隻次數 No. of Local Vessel Surveys outside Hong Kong	0	42
5. 在香港境內檢驗或檢查本地船隻次數 No. of Local Vessel Surveys within Hong Kong	2 052*	2 089
總計 Total	2 398*	2 435
IV. 舉辦安全講座及研討會 Talks and Seminars Conducted	0	1
B. 檢查正在進行工程的船舶及調查海上工業意外事故等 Inspections of Vessels Engaged in Works and Investigations of Marine Industrial Accidents etc.	2022	2023
I. 貨櫃檢查數目 No. of Containers Inspected	6 494	8 212
II. 海事工業安全檢查 (不包括貨櫃檢查) Marine Industrial Safety Inspections (not including inspection of containers)		
1. 檢查正在修理的船舶 Inspections of Vessels Undergoing Repair	472	541
2. 檢查海事工程船舶 Inspections of Vessels Engaged in Marine Construction	170	149
3. 檢查船舶裝卸貨物工具 (不包括駁船) Cargo Gear Inspections on Vessels (not including lighters)	60	88
4. 檢查船舶裝卸貨物 (不包括駁船) Stevedoring Inspections on Vessels (not including lighters)	982	1 117
5. 檢查駁船裝卸貨物工具 Cargo Gear Inspections on Lighters	268	250
6. 檢查駁船裝卸貨物 Stevedoring Inspections on Lighters	288	278
總計 Total	2 240	2 423

表 26 – 續
TABLE 26 – Cont'd

B. 檢查正在進行工程的船舶及調查海上工業意外事故等 (續) Inspections of Vessels Engaged in Works and Investigations of Marine Industrial Accidents etc. (Cont'd)	2022	2023
III. 海事工業意外的調查及查詢數目 Marine Industrial Accidents Investigated/Inquired <ol style="list-style-type: none"> 1. 調查致命的非海事工業意外 Non-marine Industrial Fatal Accidents investigated 2. 調查致命的海事工業意外 Marine Industrial Fatal Accidents investigated 3. 調查嚴重意外⁽¹⁾ Serious Accidents investigated⁽¹⁾ 4. 調查嚴重意外(無傷亡) Serious Accidents (No Casualty) investigated 5. 查詢非嚴重意外 Non-serious Accidents inquired 		
總計 Total	53	45
IV. 發生海事工業意外的數目 Marine Industrial Accidents Occurred <ol style="list-style-type: none"> 1. 修船意外總數 Total Ship Repair Accidents 2. 裝卸貨物意外總數 Total Cargo Handling Accidents 3. 海事工程意外總數 Total Marine Construction Accidents 		
總計 Total	53	45
V. 簽發修船許可證／轉介檢控小組的個案／發出警告信的數目 Letters of Permission to Undertake Repairs Issued/Cases Referred to Prosecutions Unit/Warning Letters Issued <ol style="list-style-type: none"> 1. 簽發修船許可證 Letters of Permission to Undertake Repairs issued 2. 轉介檢控小組的個案 Cases referred to Prosecutions Unit 3. 發出警告信 Warning Letters issued 		
總計 Total	1 435	1 480

表 26 – 續
TABLE 26 – Cont'd

B. 檢查正在進行工程的船舶及調查海上工業意外事故等 (續) Inspections of Vessels Engaged in Works and Investigations of Marine Industrial Accidents etc. (Cont'd)	2022	2023
VI. 海事工業安全的宣傳及教育 Promotion and Education on Marine Industrial Safety		
1. 發出安全指令 Safety Directions issued	11	18
2. 出版或修訂的安全小冊子／單張／海報／貼紙等 Safety Pamphlets/Leaflets/Posters/Stickers, etc., published or revised	5	4
3. 出版或修訂的安全指南／工作守則數目 No. of Safety Guides/Codes of Practice published or revised	0	0
4. 安全講座及研討會的舉辦數目 No. of Safety Talks and Seminars conducted	2	2
5. 到訪船舶推廣安全 Safety Promotion Visits to Vessels	1 364	1 979
總計 Total	1 382	2 003

C. 香港註冊船舶的損失數目⁽²⁾ Loss of Vessels Registered in Hong Kong⁽²⁾	2022	2023
損失船舶數目 Number Lost	0	1

D. 2023 年海上意外事故統計數字 Marine Accidents Statistics in 2023								
意外事故類別 Type of Accident	香港水域範圍以內 ⁽³⁾ Within Hong Kong Waters ⁽³⁾				香港水域範圍以外 ⁽⁴⁾ Outside Hong Kong Waters ⁽⁴⁾			
	宗數 No. of Cases	死亡人數 Persons Killed	受傷人數 Persons Injured	失蹤人數 Persons Missing	宗數 No. of Cases	死亡人數 Persons Killed	受傷人數 Persons Injured	失蹤人數 Persons Missing
相撞 Collision	32	2	8	0	13	1	0	0
接觸 Contact	66	0	4	0	11	0	0	0
沉沒／入水 Sinking/Foundering	71	1	5	0	2	8	0	9
火警／爆炸 Fire/Explosion	20	3	3	0	11	0	0	0
擱淺／觸礁 Grounding/Stranding	30	0	0	0	11	0	0	0
翻沉／傾斜 Capsized/Listing	30	0	4	0	0	0	0	0
其他 Others	155	3	73	0	102	8	64	0
總計 Total	404	9	97	0	150	17	64	9

表 26 – 續
TABLE 26 – Cont'd

E. 海上意外事故調查 Marine Accident Investigation	2022	2023
調查意外事故 《船舶及港口管制條例》、《商船(本地船隻)條例》及《商船條例》 Accidents Investigated Shipping and Port Control Ordinance, Merchant Shipping (Local Vessel) Ordinance and Merchant Shipping Ordinance	18	20
初步研訊 《商船條例》 Preliminary Inquiries Merchant Shipping Ordinance	0	0
領港研訊 《領港條例》 Pilotage Inquiries Pilotage Ordinance	0	0
海事法庭 Marine Courts	0	0
調查委員會 Board of Inquiry	0	0
對調查委員會裁決提出上訴 Appeal against the Decision of Board of Inquiry	0	0

註釋：(1) 指導致一位或以上的人留院超過 72 小時的意外。

Notes: Refers to accidents resulted in hospitalisation of one or more persons for more than 72 hours.

(2) 指因遇險而導致損失的船舶。

Refers to loss of vessels due to casualty or accident.

(3) 包括所有船舶(如香港註冊及外國註冊船舶、本地領牌船隻、內河船隻、沿海船隻、政府船舶)的意外及傷亡數字。

Including accidents and casualties figures of all vessels (such as Hong Kong registered and foreign registered vessels, locally licensed vessels, river trade vessels, coastal vessels, government launches).

(4) 只包括在香港註冊或領牌的船舶的意外及傷亡數字。

Including accidents and casualties figures of Hong Kong registered vessels or locally licensed vessels only.

資料來源：(A) 海事處本地船舶安全組

Data Sources: Local Vessels Safety Section, Marine Department

(B) 海事處海事工業安全組

Marine Industrial Safety Section, Marine Department

(C) 海事處船舶註冊服務組

Ship Registration Services Section, Marine Department

(D) & (E) 海事處海事意外調查組

Marine Accident Investigation Section, Marine Department

表 27
TABLE 27

海員發證、註冊和僱用統計數字
Seafarers' Certification, Registration and Employment Statistics

A. 遠洋合格證明書 Seagoing Certificates of Competency		2022		2023	
		申請人數 Number of Applications	及格人數 Number of Successes	申請人數 Number of Applications	及格人數 Number of Successes
1. 商船船長及 甲板高級船員	Master Mariner and Deck Officer				
一級甲板高級船員 (商船船長)	Deck Officer Class 1 (Master Mariner)				
筆試	Written Examination	0	0	5	4
口試	Oral Examination	21	9	21	7
其他 ⁽¹⁾	Other Services ⁽¹⁾	15	14	10	10
二級甲板高級船員	Deck Officer Class 2				
筆試	Written Examination	32	23	24	21
口試	Oral Examination	11	3	17	6
其他 ⁽¹⁾	Other Services ⁽¹⁾	8	8	8	6
三級甲板高級船員	Deck Officer Class 3				
筆試	Written Examination	20	9	3	1
口試	Oral Examination	45	13	66	16
訊號	Signal	27	6	24	8
其他 ⁽¹⁾	Other Services ⁽¹⁾	34	32	17	17
小計	Sub-total	213	117	195	96
2. 輪機師	Marine Engineer Officer				
一級輪機師	Marine Engineer Officer – Class 1				
筆試	Written Examination	6	1	4	2
口試	Oral Examination	1	0	1	1
其他 ⁽¹⁾	Other Services ⁽¹⁾	7	7	2	2
二級輪機師	Marine Engineer Officer – Class 2				
筆試	Written Examination	15	7	8	4
口試	Oral Examination	14	3	3	0
其他 ⁽¹⁾	Other Services ⁽¹⁾	9	9	3	2
三級輪機師	Marine Engineer Officer – Class 3				
口試	Oral Examination	7	3	2	2
其他 ⁽¹⁾	Other Services ⁽¹⁾	17	16	6	5
電子技術高級船員	Electro-Technical Officer				
口試	Oral Examination	0	0	0	0
其他 ⁽¹⁾	Other Services ⁽¹⁾	0	0	0	0
小計	Sub-total	76	46	29	18
總計	Total	289	163	224	114

表 27 – 續
TABLE 27 – Cont'd

B. 內河航行合格證明書 River Trade Certificates of Competency		2022		2023	
		申請人數 Number of Applications	及格人數 Number of Successes	申請人數 Number of Applications	及格人數 Number of Successes
1. 甲板高級船員	Deck Officer				
一級甲板高級船員	Deck Officer Class 1				
筆試	Written Examination	0	0	0	0
口試	Oral Examination	5	1	9	2
其他 ⁽¹⁾	Other Services ⁽¹⁾	13	13	7	6
二級甲板高級船員	Deck Officer Class 2				
筆試	Written Examination	0	0	8	4
口試	Oral Examination	0	0	7	3
其他 ⁽¹⁾	Other Services ⁽¹⁾	3	3	3	3
三級甲板高級船員	Deck Officer Class 3				
筆試	Written Examination	2	1	16	12
口試	Oral Examination	0	0	0	0
訊號	Signal	5	0	8	2
其他 ⁽¹⁾	Other Services ⁽¹⁾	4	4	21	21
小計	Sub-total	32	22	79	53
2. 輪機師	Marine Engineer Officer				
一級輪機師	Marine Engineer Officer – Class 1				
筆試	Written Examination	0	0	0	0
口試	Oral Examination	0	0	0	0
其他 ⁽¹⁾	Other Services ⁽¹⁾	1	1	0	0
二級輪機師	Marine Engineer Officer – Class 2				
筆試	Written Examination	1	1	0	0
口試	Oral Examination	2	2	0	0
其他 ⁽¹⁾	Other Services ⁽¹⁾	6	6	11	11
三級輪機師	Marine Engineer Officer – Class 3				
口試	Oral Examination	0	0	0	0
其他 ⁽¹⁾	Other Services ⁽¹⁾	4	4	2	2
小計	Sub-total	14	14	13	13
總計	Total	46	36	92	66

表 27 – 續
TABLE 27 – Cont'd

C.1 本地合格證明書 Local Certificates of Competency		2022		2023	
		申請人數 Number of Applications	及格人數 Number of Successes	申請人數 Number of Applications	及格人數 Number of Successes
1. 船長	Coxswain				
一級船長	Coxswain Grade 1				
筆試	Written Examination	32	22	22	12
其他 ⁽¹⁾	Other Services ⁽¹⁾	299	297	402	392
二級船長	Coxswain Grade 2				
筆試	Written Examination	126	72	103	52
口試	Oral Examination	236	61	236	62
其他 ⁽¹⁾	Other Services ⁽¹⁾	875	861	940	928
三級船長	Coxswain Grade 3				
筆試	Written Examination	311	178	396	189
口試	Oral Examination	0	0	0	0
其他 ⁽¹⁾	Other Services ⁽¹⁾	865	847	773	763
小計	Sub-total	2 744	2 338	2 872	2 398
2. 輪機操作員	Engine Operator				
一級輪機操作員	Engine Operator Grade 1				
其他 ⁽¹⁾	Other Services ⁽¹⁾	571	561	679	670
二級輪機操作員	Engine Operator Grade 2				
筆試	Written Examination	172	34	162	41
其他 ⁽¹⁾	Other Services ⁽¹⁾	11	11	31	30
三級輪機操作員	Engine Operator Grade 3				
筆試	Written Examination	581	144	462	90
其他 ⁽¹⁾	Other Services ⁽¹⁾	533	520	499	491
小計	Sub-total	1 868	1 270	1 833	1 322
總計	Total	4 612	3 608	4 705	3 720

表 27 – 續
TABLE 27 – Cont'd

C.2 遊樂船隻操作人合格證明書 Pleasure Vessel Operator Certificate of Competency		2022		2023	
		申請人數 Number of Applications	及格人數 Number of Successes	申請人數 Number of Applications	及格人數 Number of Successes
遊樂船隻 一級操作人	Pleasure Vessel Operator Grade 1				
筆試	Written Examination	170	87	208	111
口試	Oral Examination	226	68	218	89
其他 ⁽¹⁾	Other Services ⁽¹⁾	999	983	1 155	1 146
遊樂船隻 二級操作人	Pleasure Vessel Operator Grade 2				
筆試	Written Examination	15 077	8 223	15 295	7 865
口試	Oral Examination	0	0	0	0
其他 ⁽¹⁾	Other Services ⁽¹⁾	1 536	1 525	1 614	1 605
總計	Total	18 008	10 886	18 490	10 816

D. 部門考試 Departmental Examinations		2022		2023	
		考試人數 Examined	及格人數 Passed	考試人數 Examined	及格人數 Passed
一級本地船長	Coxswain Grade 1	0	0	0	0
二級本地船長	Coxswain Grade 2	31	16	74	46
三級本地船長	Coxswain Grade 3	84	57	134	76
一級輪機操作員	Engine Operator Grade 1	0	0	0	0
二級輪機操作員	Engine Operator Grade 2	42	13	63	26
三級輪機操作員	Engine Operator Grade 3	63	30	219	60
總計	Total	220	116	490	208

表 27 – 續
TABLE 27 – Cont'd

E. 其他考試/評定 Other Examinations/Assessments		2022		2023	
		申請人數 Number of Applications	及格人數 Number of Successes	申請人數 Number of Applications	及格人數 Number of Successes
培訓合格證書	Certificate of Proficiency (CoP)				
甲板高級海員	Able Seafarer Deck	0	0	0	0
導航值班普通船員	Navigational Watch Rating	0	0	0	0
機房高級海員	Able Seafarer Engine	0	0	2	1
機房值班普通船員	Engine Room Watch Rating	0	0	0	0
電子技術普通船員	Electro-Technical Rating	0	0	0	0
其他	Others	177	175	160	159
類型級別證明書 (考試、重新生效及 夜航批准)	Type Rating Certificate (Examination, Revalidation and Night Service Approval)	248	215	432	312
香港執照	Hong Kong Licence	22 782	20 689	21 915	20 041
本地豁免	Local Exemption	53	52	32	30
總計	Total	23 260	21 131	22 541	20 543

F. 截至 2023 年 12 月 31 日為止的海員註冊人數 Seafarer's Registration as at 31.12.2023			
根據第 478 章註冊的海員 Seafarers Registered Under Cap. 478	第一部 Part I	第二部 Part II	總計 Total
		5 007	1 702

表 27 – 續
TABLE 27 – Cont'd

G. 2023 年所簽發的僱用登記簿數目 Employment Registration Books Issued, 2023			
續發簿 Subsequent Books	補發簿 Replacement Books	新海員簿 New Entrants Books	總計 Total
0	2	70	72

H. 2023 年海員就業統計數字 ⁽²⁾ Seafarers Employment Statistics, 2023 ⁽²⁾			
僱用海員方式 Seafarers Employed Through			
核准公司名冊 Permitted Company Roster	總名冊 General Roster	緊急僱用／重新僱用等 Emergency/ Re-employment, etc.	總計 Total
394	3	399	796

I. 船公司及職位統計數字 Companies and Posts Statistics	
截至 2023 年 12 月 31 日為止在商船海員管理處登記僱用本港註冊海員的船公司數目 Shipping companies listed with Mercantile Marine Office to employ Hong Kong registered seafarers as at 31.12.2023	23
2023 年按船公司所交周年報表而編製的本港海員就業職位 Posts filled by Hong Kong seafarers as compiled from annual returns submitted by shipping companies, 2023	466

表 27 – 續
TABLE 27 – Cont'd

J. 香港註冊船舶僱用和解職的海員人次 ⁽³⁾ Number of Employment and Discharge of Seafarers ⁽³⁾ by Hong Kong Registered Ships	2022	2023
僱用的海員人次 No. of employment of seafarers	92 628	90 599
解職的海員人次 No. of discharge of seafarers	51 128	91 640

註釋： (1) 包括有關證明書批註、豁免、重新生效等事宜的申請。
Notes: Including applications for endorsement, exemption and revalidation etc.

(2) 數字指年內本港註冊海員的僱用協議數目。
Figures refer to number of employment agreements of Hong Kong registered seafarers during the year.

(3) 數字包括在香港以外地方註冊的海員。
Figures include seafarers registered outside Hong Kong.

資料來源： (A) – (E) 海事處內河航行及本地考試組
Data Sources: River Trade and Local Examination Section, Marine Department

(F) – (J) 海事處遠洋航行考試及商船海員管理處
Seagoing Examination and Mercantile Marine Office, Marine Department

表 28
TABLE 28

香港註冊船舶統計數字 (截至 2023 年年底)
Statistics on Ships Registered in Hong Kong (as at end 2023)

A. 船舶數目和噸位
Number of Ships and Tonnage

	船舶註冊概況 On register
船舶數目 No. of Ships	2 329
淨噸位 ⁽¹⁾ (千噸) Net Tonnage ⁽¹⁾ ('000 tons)	68 237
總噸位 ⁽¹⁾ (千噸) Gross Tonnage ⁽¹⁾ ('000 tons)	128 119

B. 按總噸位分析在香港註冊的船舶數目
Ships Registered in Hong Kong by Gross Tonnage

總噸位 ⁽¹⁾ Gross Tonnage ⁽¹⁾	船舶數目 No. of Ships
< 500	119
500 – < 1 000	46
1 000 – < 5 000	58
5 000 – < 10 000	191
10 000 – < 15 000	42
15 000 – < 20 000	128
20 000 – < 25 000	163
25 000 – < 30 000	216
30 000 – < 35 000	205
35 000 – < 40 000	165
40 000 – < 45 000	208
45 000 – < 50 000	33
50 000 – < 55 000	57
55 000 – < 60 000	11
60 000 – < 65 000	35
65 000 – < 85 000	32
85 000 – < 115 000	293
115 000 – < 145 000	73
145 000 – < 175 000	185
175 000 – < 200 000	23
≥ 200 000	46
總計 Total	2 329

表 28 – 續
TABLE 28 – Cont'd

C. 按船舶類型分析在香港註冊的船舶數目
Ships Registered in Hong Kong by Ship Type

船舶類型	Ship Type	船舶數目 No. of Ships	總噸位 ⁽¹⁾ (千噸) Gross Tonnage ⁽¹⁾ ('000 tons)
貨船	Cargo Ship	1 753	100 904
散裝貨船	Bulk Carrier	877	41 958
集裝箱船	Container Vessel	597	39 842
一般貨船	General Cargo Ship	149	3 207
礦沙／散貨／ 油類混用船	Ore/Bulk/Oil (OBO) Carrier	107	15 274
其他貨船	Other Cargo Ship	23	621
液貨船	Tanker	436	27 164
油輪	Oil Tanker	248	19 893
化學品運載船	Chemical Tanker	116	2 390
液化氣體運載船	Gas Carrier	66	4 409
其他液貨船	Other Tanker	6	471
拖船	Tug	34	14
客船	Passenger Ship	56	30
高速客船	High Speed Craft	40	23
其他客船	Other Passenger Ship	16	8
遊艇	Yacht	50	6
總計	Total	2 329	128 119

註釋： (1) 淨噸位及總噸位以每單位 100 立方呎計算。

Note: Net and gross tonnages are in units of 100 cubic feet.

資料來源： 海事處船舶註冊處

Data Source: Shipping Registry, Marine Department

表 29
TABLE 29
政府船隊統計數字
Government Fleet Statistics

項目	Item	2022	2023
1. 開支預算總額 ⁽¹⁾ (百萬元)	Total expenditure estimate ⁽¹⁾ (\$M)	671.2	680.4
2. 政府船隊科實際員額總數(包括船員) ⁽²⁾	Total strength in Government Fleet Division (GFD) (including crew) ⁽²⁾	469	466
3. (i) 建成及交收的政府新船	(i) Government new vessels built and delivered	12	31
(ii) 建造中的政府新船	(ii) Government new vessels under construction	36	54
(iii) 已完成的政府新船計劃	(iii) Government new vessel projects completed	7	3
(iv) 正進行中的政府新船計劃	(iv) Government new vessel projects in progress	35	39
4. 新船招標／報價	Tenders/Quotations called for new vessels	14	11
5. 新船合約	Contracts awarded for new vessels	7	7
6. 已完成的合約及購買規格書	Contracts and procurement specifications completed	15	3
7. (i) 政府船舶總數 ⁽²⁾	(i) Total number of Government vessels ⁽²⁾	1 002	987
a. 大型機動船	a. Major mechanised vessels	98	100
b. 小型機動船／小快艇	b. Minor mechanised vessels/small speed boats	22	22
c. 大型高速船	c. High speed craft (large type)	23	24
d. 中型高速船	d. High speed craft (medium type)	57	55
e. 其他雜項類型船舶	e. Other miscellaneous class vessels	802	786
(ii) 由海事處人員操作的政府船舶 ⁽²⁾	(ii) Government vessels operated by the Marine Department (MD) ⁽²⁾	50	51
(iii) 海事處可供調配船員的時數比率	(iii) MD crew staff time available for deployment	87.7%	83.0%
(iv) 已處理報廢的政府船舶	(iv) Government vessels disposed of	33	18
8. (i) 可使用機動船的可提供使用率 ⁽³⁾⁽⁴⁾	(i) Availability of mechanised vessels in use ⁽³⁾⁽⁴⁾	88.5%	88.2%
(ii) 可使用機動船的數目 ⁽²⁾⁽³⁾	(ii) Number of mechanised vessels in use ⁽²⁾⁽³⁾	200	201
(iii) 船隻維修後首次試航成功率	(iii) Successful first sea trails after vessel maintenance	98.4%	99.4%
(iv) 政府船塢服務使用者滿意程度	(iv) User satisfaction with Government Dockyard's services	99.8%	100.0%
9. 可使用機動船(包括他們的機動子艇)保養費總額(百萬元) ⁽³⁾	Total maintenance cost of mechanised vessels in use (including their mechanised daughter boats) (\$M) ⁽³⁾	263.4	282.2
10. 可使用機動船(包括他們的機動子艇)平均保養費(百萬元) ⁽³⁾	Average maintenance cost of mechanised vessels in use (including their mechanised daughter boats) (\$M) ⁽³⁾	1.3	1.4

表 29 – 續
TABLE 29 – Cont'd

項目	Item	2022	2023
11. (i) 船舶維修定期保養合約安排總數	(i) Total number of vessel maintenance term contract (TC) arrangements	53	47
a. 根據合約保養的船舶數目	a. Number of vessels maintained under TC	464	549
b. 根據合約保養的主機數目	b. Number of main engines repaired under TC	231	238
(ii) 採購機械零件的定期合約數目	(ii) Number of TC for procurement of machinery spare parts	26	24
12. 由海事處人員操作的政府船舶肇事個案	Accidents involving Government vessels operated by MD		
(i) 肇事政府船舶數目	(i) Number of Government vessels involved	6	5
(ii) 工傷意外傷亡數目	(ii) Number of casualties in industrial accidents		
a. 船塢員工	a. Dockyard staff	2	1
b. 船員	b. Crew	6	4
13. 參加職業安全及健康 (職安健) 課程的政府船塢人員人數	Number of attendees of Government Dockyard to Occupational Safety and Health (OSH) training courses		
(i) 職業安全健康局舉辦課程	(i) Organised by the OSH Council	37	5
(ii) 政府船隊科工業安全組舉辦的課程	(ii) Organised by the Industrial Safety Section, GFD	49	61
(iii) 其他職安健課程	(iii) Other OSH courses	45	36

- 註釋： (1) 指財政年度內的數字 (由當年 4 月 1 日至下年 3 月 31 日)。
Notes: Figures refer to those in financial year (i.e. from 1 April of current year to 31 March of next year).
- (2) 指該年年底的數字。
Figures refer to the position as at end of the year.
- (3) 可使用機動船涵蓋四類機動船，即大型機動船、小型機動船／小快艇、大型高速船及中型高速船。
Mechanised vessels in use include four types of mechanised vessels, i.e. major mechanised vessels, minor mechanised vessels/small speed boats, high speed craft (large type) and high speed craft (medium type).
- (4) 數字包括在政府船塢以內及以外因維修而停船的時間。
Figures include downtime due to repair conducted inside and outside the Government Dockyard.

資料來源： 海事處政府船隊科
Data Source: Government Fleet Division, Marine Department

表 30
TABLE 30

政府船舶所屬部門及可用率情況 (截至 2023 年年底)
Departmental Ownership and Availabilities of Government Vessels (as at end 2023)

船舶類型 Vessel Type	所屬部門 Departmental Ownership													總計 Total
	漁農 自然 護理署 AFCD	民眾 安全 服務隊 CAS	土木 工程 拓展署 CEDD	懲教署 CSD	香港 海關 C&ED	環境 保護署 EPD	消防處 FSD	衛生署 DH	香港 警務處 HKPF	入境 事務處 ImmD	康樂及 文化 事務署 LCSD	海事處 MD	水務署 WSD	
機動子艇及泳灘艇 Mechanised Daughter Boats & Beach Craft	0	0	0	0	8	0	7	0	15	0	148	1	0	179
浮橋物／泳灘浮台及浮筏 Floating Structures/Beach Platforms & Rafts	0	0	0	0	0	0	0	0	0	301	212	0	0	513
機動及非機動充氣式橡皮艇 Mechanised and Non-mechanised Inflatable Boats	2	11	0	0	1	1	12	0	5	0	0	2	4	38
駁船 Lighters	0	0	0	0	0	0	1	0	6	0	0	21	0	28
小艇 Dinghies	9	0	0	0	0	0	5	0	3	0	0	10	1	28
大型機動船 Major Mechanised Vessels	4	0	3	1	7	1	13	1	36	7	0	27	0	100
小型機動船／小快艇 Minor Mechanised Vessels/Small Speed Boat	5	0	0	0	0	0	9	0	3	0	0	2	3	22
大型高速船 High Speed Craft (large type)	0	0	0	0	4	0	0	0	20	0	0	0	0	24
中型高速船 High Speed Craft (medium type)	11	0	0	0	2	0	2	0	35	0	0	5	0	55
總計 Total	31	11	3	1	22	2	49	1	123	308	360	68	8	987
可使用機動船的平均可提供使用率 ⁽¹⁾ Average Availability of Mechanised Vessels in use ⁽¹⁾	81.3%	-	84.7%	87.6%	85.0%	80.7%	86.3%	91.6%	91.7%	84.0%	-	86.0%	94.1%	88.2%

註釋： (1) 可使用機動船涵蓋四類機動船，即大型機動船、小型機動船／小快艇、大型高速船及中型高速船。使用率數字包括在政府船塢以內及以外因維修而停船的時間。

Note: Mechanised vessels in use include four types of mechanised vessels, i.e. major mechanised vessels, minor mechanised vessels/small speed boats, high speed craft (large type) and high speed craft (medium type). Figures on average availability include downtime due to repair conducted inside and outside the Government Dockyard.

資料來源： 海事處政府船隊科

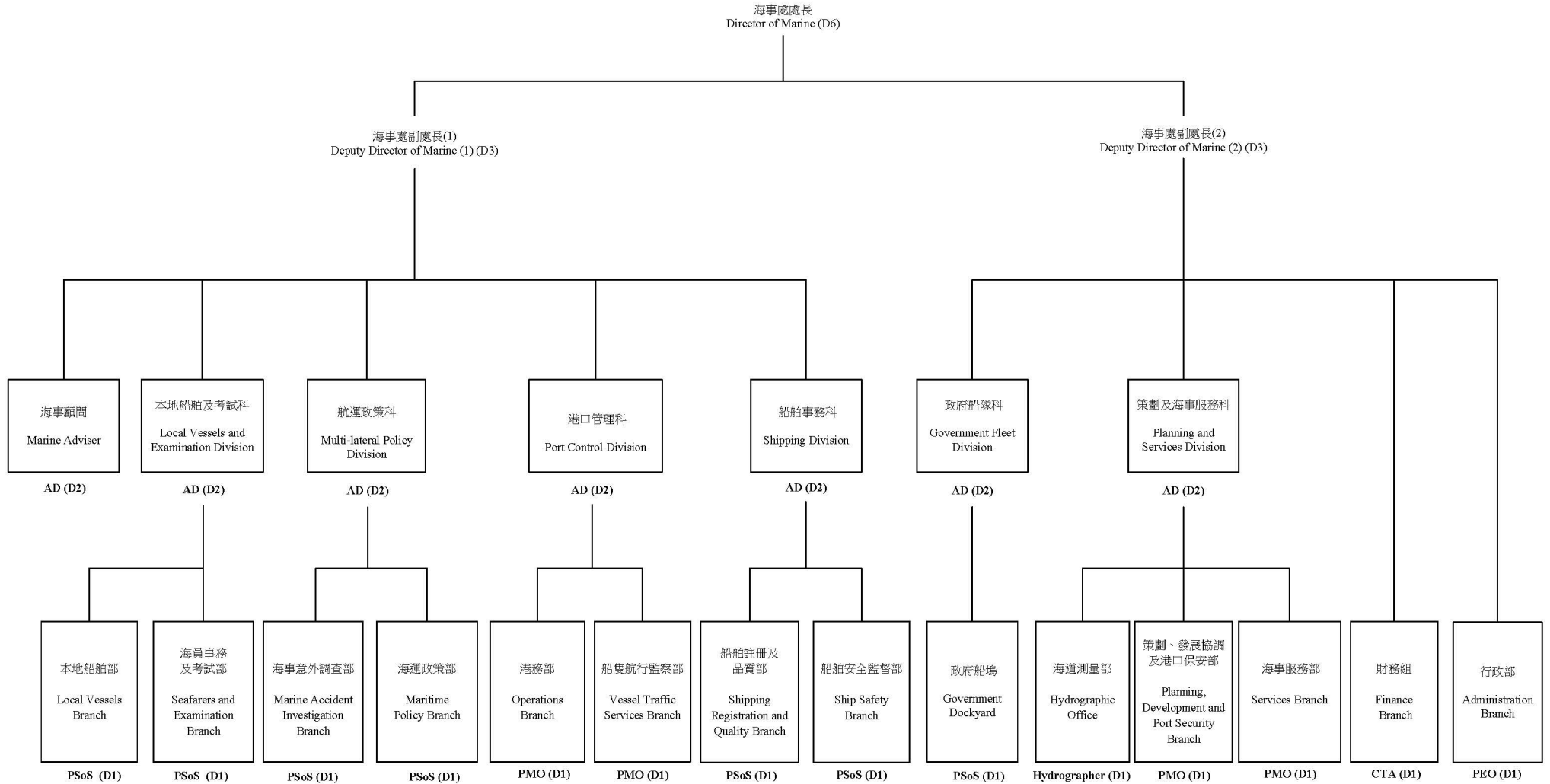
Data Source: Government Fleet Division, Marine Department

附 錄

Appendices

附錄 A
APPENDIX A

海事處組織架構圖 (截至 2023 年年底)
Organisation Chart of the Marine Department (as at end 2023)



Page A 1

Deputy Director (2) also oversees Information and Public Relations Section and Senior Administrative Officer (Policy Support)
副處長(2)亦負責管理新聞及公共關係組及高級政務主任(政策支援)

圖例：	AD	= 海事處助理處長	Assistant Director of Marine	PEO	= 首席行政主任	Principal Executive Officer
Legend:	PMO	= 首席海事主任	Principal Marine Officer	CTA	= 總庫務會計師	Chief Treasury Accountant
	PSoS	= 首席驗船主任	Principal Surveyor of Ships	D6	= 首長薪級第六點 (如此類推)	Directorate Level 6 (and so on)
	Hydrographer	= 海道測量師	Hydrographer			

附錄 B
APPENDIX B

海事處的編制和實際員額 (截至 2023 年年底)
Establishment and Strength of the Marine Department (as at end 2023)

		編制 Establishment	實際員額 Strength
首長級人員			
Directorate Officers			
海事處處長	Director of Marine (D6)	1	0
首長級甲級政務官	Administrative Officer Staff Grade A (D6)	1♦	1
海事處副處長	Deputy Director of Marine (D3)	1	1
首長級乙級政務官	Administrative Officer Staff Grade B (D3)	1	0
首長級丙級政務官	Administrative Officer Staff Grade C (D2)	0	1
海事處助理處長	Assistant Director of Marine (D2)	7 + 3♦	2
首席驗船主任	Principal Surveyor of Ships (D1)	7 + 1♦	6
首席海事主任	Principal Marine Officer (D1)	4	2
海道測量師	Hydrographer (D1)	1	1
首席行政主任	Principal Executive Officer (D1)	1	1
總庫務會計師	Chief Treasury Accountant (D1)	1	1
部門職系			
Departmental Grade			
高級驗船主任	Senior Surveyor of Ships	22	17
驗船主任／ 助理驗船主任	Surveyor of Ships/ Assistant Surveyor of Ships	41	30
高級海事主任	Senior Marine Officer	20	14
海事主任／ 助理海事主任	Marine Officer/ Assistant Marine Officer	39	32
高級船舶安全主任	Senior Shipping Safety Officer	1	1
船舶安全主任	Shipping Safety Officer	5	3
海事監督	Marine Controller	15 + 1♦	7
助理海事監督	Assistant Marine Controller	52	54
輔航設備監督	Superintendent of Aids to Navigation	1	0
助理輔航設備監督	Assistant Superintendent of Aids to Navigation	2	2
總驗船督察	Chief Ship Inspector	2 + 2♦	0
高級驗船督察	Senior Ship Inspector	13 + 1♦	11
驗船督察	Ship Inspector	38	32
助理驗船督察	Assistant Ship Inspector	24	30
高級助理船務主任	Senior Assistant Shipping Master	30	28
一級海事督察	Marine Inspector I	104 + 1♦	91
二級海事督察	Marine Inspector II	132	128
小輪大偈	Launch Mechanic	1	0

附錄 B – 續
APPENDIX B – Cont'd

		編制 Establishment	實際員額 Strength
一般職系 General Grade			
高級政務主任	Senior Administrative Officer	1	1
總行政主任	Chief Executive Officer	2	1
高級行政主任	Senior Executive Officer	4	5
一級行政主任	Executive Officer I	9	8
二級行政主任	Executive Officer II	9	8
高級庫務會計師	Senior Treasury Accountant	1	1
庫務會計師	Treasury Accountant	3 + 1♦	3
高級會計主任	Senior Accounting Officer	1	1
一級會計主任	Accounting Officer I	1	1
二級會計主任	Accounting Officer II	4	4
高級管理參議主任	Senior Management Services Officer	1	1
二級管理參議主任	Management Services Officer II	2	2
高級法定語文主任	Senior Official Languages Officer	1	1
一級法定語文主任	Official Languages Officer I	2	1
二級法定語文主任	Official Languages Officer II	2	3
高級系統經理	Senior Systems Manager	0	0
系統經理	Systems Manager	3	3
一級系統分析／ 程序編製主任	Analyst/Programmer I	6	4
二級系統分析／ 程序編製主任	Analyst/Programmer II	6	9
高級統計師	Senior Statistician	1	1
一級統計主任	Statistical Officer I	1	1
二級統計主任	Statistical Officer II	3	3

附錄 B – 續
APPENDIX B – Cont'd

		編制 Establishment	實際員額 Strength
一般職系 (續) General Grade (Cont'd)			
高級土地測量師	Senior Land Surveyor	2 + 1♦	1
土地測量師/ 助理土地測量師	Land Surveyor/ Assistant Land Surveyor	6	7
首席測量主任 (工程)	Principal Survey Officer (Engineering)	1	1
高級測量主任 (工程)	Senior Survey Officer (Engineering)	4	4
測量主任 (工程)/ 見習測量主任 (工程)	Survey Officer (Engineering)/ Survey Officer Trainee (Engineering)	12	10
首席技術主任 (製圖)	Principal Technical Officer (Cartographic)	2	2
高級技術主任 (製圖)	Senior Technical Officer (Cartographic)	6	6
技術主任 (製圖) / 見習技術主任 (製圖)	Technical Officer (Cartographic)/ Technical Officer Trainee (Cartographic)	10	6
高級電子工程師	Senior Electronics Engineer	1	1
電子工程師/ 助理電子工程師	Electronics Engineer/ Assistant Electronics Engineer	2	2
電子督察	Electronics Inspector	1	1
高級私人秘書	Senior Personal Secretary	1	1
一級私人秘書	Personal Secretary I	8	5
二級私人秘書	Personal Secretary II	16 + 1♦	12
打字員	Typist	2	0
機密檔案室助理	Confidential Assistant	1	1
高級文書主任	Senior Clerical Officer	6	6
文書主任	Clerical Officer	32 + 2♦	30
助理文書主任	Assistant Clerical Officer	87	85
文書助理	Clerical Assistant	121 + 1♦	100
辦公室助理員	Office Assistant	2	2

附錄 B – 續
APPENDIX B – Cont'd

		編制 Establishment	實際員額 Strength
一般職系 (續) General Grade (Cont'd)			
總物料供應主任	Chief Supplies Officer	1	0
高級物料供應主任	Senior Supplies Officer	1	1
物料供應主任	Supplies Officer	2	1
助理物料供應主任	Assistant Supplies Officer	1	3
高級物料供應員	Senior Supplies Supervisor	1	0
一級物料供應員	Supplies Supervisor I	3	4
二級物料供應員	Supplies Supervisor II	11	11
助理物料供應員	Supplies Assistant	6	6
物料供應服務員	Supplies Attendant	2	2
助理空氣調節督察	Assistant Air-Conditioning Inspector	1	1
汽車司機	Motor Driver	4	4
共通職系 Common Grade			
總技術主任	Chief Technical Officer	2	2
高級電氣督察	Senior Electrical Inspector	2	2
電氣督察	Electrical Inspector	1	0
助理電氣督察	Assistant Electrical Inspector	1	1
高級機械督察	Senior Mechanical Inspector	7 + 1♦	7
機械督察	Mechanical Inspector	2	2
小輪船員督導員	Launch Crew Supervisor	3	3
高級小輪船長	Senior Launch Master	56 + 2♦	53
小輪船長	Launch Master	49 + 1♦	41
小輪助理員	Launch Assistant	208	197

附錄 B – 續
APPENDIX B – Cont'd

		編制 Establishment	實際員額 Strength
共通職系 (續) Common Grade (Cont'd)			
一級監工	Works Supervisor I	12	11
二級監工	Works Supervisor II	8	7
高級技工	Senior Artisan	39	35
技工	Artisan	67 + 1♦	36
丈量員	Chainman	2	0
二級工人	Workman II	40	36
總計	Total	1 484 + 21♦	1 307

註釋： ♦ 編外職位

Note: Supernumerary post

附錄 C
APPENDIX C

2023 年海事處訓練組舉辦的課程
Training Courses Conducted by Training Section, Marine Department, 2023

課程名稱 Course Title	學期(天) Duration (days)	參加學員 ⁽¹⁾ Target Participants ⁽¹⁾	班級數目 Number of Classes	學員數目 Number of Participants
1. 全球海上遇險和安全系統(限用操作員證書課程) Global Maritime Distress and Safety System (GMDSS) (Restricted Operator's Certificate Course)	5	MI II	2	12
2. IAMSAR 海事搜索及拯救課程 IAMSAR Maritime Search and Rescue Course	5	AMO, MO	1	5
3. 新招聘海事主任, 助理海事主任及助理海事監督導引 訓練課程 Induction Training Programme for Newly Recruited Marine Officer, Assistant Marine Officer & Assistant Marine Controller	2	MO, AMO, AMC	1	12
4. 海道測量與製圖簡介課程 Introduction to Hydrographic Surveying and Charting Course	5	SMO, MO, AMO	2	9
5. 本地船舶模擬駕駛操作訓練課程 Local Craft Simulation Training Course	4	LM	1	5
6. 海事督察訓練課程 - 甲部 Marine Inspector Training Course - Part A	30	MI II	2	12
7. 海事研討會/工作坊 Maritime Seminar/Workshop	0.5 - 2	PMO, SMO, MM, MO, AMO	3	52
8. 民安隊海上油污訓練課程 Oil Pollution Course for CAS Staff	2	CAS	1	12
9. 香港水域雷達操作員 7 天課程 7-day Radar Operator Course for Hong Kong Waters	7	LM	2	12
10. 船舶排放黑煙 (Ringelmann Chart) 應用課程 Ringelmann Chart Application Course on Dark Smoke Emission	0.5	MI II	2	23
11. 船隻航行監察服務在職訓練導師課程 Vessel Traffic Service On-the-Job Training Instructor Course	5	AMC	1	5
12. 船隻航行監察服務在職培訓課程 Vessel Traffic Service Operator On-the-Job Training Course	30	AMC	2	11
13. 船隻航行監察服務操作員訓練課程(助理海事監督) Vessel Traffic Service Operator Training Course for AMC	63	AMC	1	6
14. 船隻航行監察服務重新生效- 經常性訓練 Vessel Traffic Service Revalidation - Recurrent Training	3	MC, AMC	2	9
15. 船隻航行監察服務重新生效- 更新訓練 Vessel Traffic Service Revalidation - Updating Training	3	AMC	1	1
16. 船隻航行監察服務監督員課程 Vessel Traffic Service Supervisor Training Course	3	AMC	2	7
總計 Total			26	193

附錄 C – 續
APPENDIX C – Cont'd

註釋： (1) 參加課程的機構或海事處職員職位詳列於下表：

Note: Organisations or posts in Marine Department participating in the training courses are listed below:

機構	Organisation	縮寫 Abbreviation
民眾安全服務隊	Civil Aid Service	CAS

海事處職員職位	Post in Marine Department	縮寫 (以斜體表示) Abbreviation (showed in italics)
助理海事監督	Assistant Marine Controller	<i>AMC</i>
助理海事主任	Assistant Marine Officer	<i>AMO</i>
小輪船長	Launch Master	<i>LM</i>
二級海事督察	Marine Inspector II	<i>MI II</i>
海事經理	Marine Manager	<i>MM</i>
海事主任	Marine Officer	<i>MO</i>
首席海事主任	Principal Marine Officer	<i>PMO</i>
高級海事主任	Senior Marine Officer	<i>SMO</i>

附錄 D
APPENDIX D
2023 年海事處訪客
Visitors to the Marine Department, 2023

海事處於 2023 年接待了以下訪客：

During the year of 2023, the Marine Department hosted the following visitors:

編號 No.	訪問日期 Date of Visit	機構／代表 Organisation/Representative
1.	17.1.2023	Saab Technologies (Hong Kong) Limited
2.	19.1.2023, 23.3.2023, 23.5.2023, 10.8.2023, 18.9.2023	香港警務處 Hong Kong Police Force
3.	13.2.2023	香港天文台 Hong Kong Observatory
4.	16.2.2023, 3.3.2023, 17.3.2023, 31.3.2023, 17.10.2023	香港航海學校 Hong Kong Sea School
5.	18.2.2023	香港童軍總會 Scout Association of Hong Kong
6.	22.2.2023	慈幼英文學校 Salesian English School
7.	10.3.2023	土木工程拓展署 Civil Engineering and Development Department
8.	10.3.2023, 7.9.2023	發展局海港辦事處 Harbour Office, Development Bureau
9.	10.3.2023	西九文化區管理局 West Kowloon Cultural District Authority
10.	31.3.2023, 31.10.2023	余振強紀念中學 Yu Chun Keung Memorial College
11.	3.4.2023	民生書院 MunSang College
12.	12.4.2023	PSA 國際港務集團 PSA Marine (Pte) Limited
13.	14.4.2023	海事專才推廣聯盟 Maritime Professional Promotion Federation (MPPF)
14.	21.4.2023, 19.7.2023	勞工處 Labour Department
15.	23.4.2023	新加坡海事與港務管理局 Maritime and Port Authority of Singapore
16.	2.5.2023	中英船舶管理有限公司 Anglo-Eastern Ship Management Limited
17.	2.5.2023	中國遠洋海運集團有限公司 China COSCO SHIPPING Corporation Limited

附錄 D – 續
APPENDIX D – Cont'd

編號 No.	訪問日期 Date of Visit	機構／代表 Organisation/Representative
18.	2.5.2023	中遠海運散貨運輸有限公司 COSCO Shipping Bulk Company Limited
19.	2.5.2023	Fleet Management Limited
20.	2.5.2023	香港明華船務有限公司 Hong Kong Ming Wah Shipping Company Limited
21.	2.5.2023	香港船東會 Hong Kong Shipowners Association
22.	2.5.2023	馬士基 Maersk A/S
23.	2.5.2023	東方海外貨櫃航運公司 Orient Overseas Container Line Limited
24.	2.5.2023	太平洋航運（香港）有限公司 Pacific Basin Shipping (HK) Limited
25.	2.5.2023	Raffles Technical Services Pte. Limited
26.	2.5.2023	Seaspan Corporation
27.	2.5.2023	Seaspan Ship Management Limited
28.	2.5.2023	上海遠洋運輸有限公司 Shanghai Ocean Shipping Company Limited
29.	2.5.2023	上海海豐船舶管理有限公司 SITC Shipping Management (Shanghai) Company Limited
30.	2.5.2023	華光船務管理（香港）有限公司 Wah Kwong Ship Management (HK) Limited
31.	12.5.2023	浙江海洋大學 Zhejiang Ocean University
32.	17.5.2023	伯特利中學 Bethel High School
33.	31.5.2023	工聯會物流及交通行業委員會 HKFTU Logistics and Transport Industry Committee
34.	8.6.2023	華洋海事中心有限公司 Huayang Maritime Center
35.	28.6.2023	政府飛行服務隊 Government Flying Service
36.	7.7.2023	香島中學 Heung To Middle School
37.	19.7.2023	珠江中轉物流有限公司 Chu Kong Transhipment & Logistics Company Limited

附錄 D – 續
APPENDIX D – Cont'd

編號 No.	訪問日期 Date of Visit	機構／代表 Organisation/Representative
38.	19.7.2023	海港運輸業總工會 Harbour Transportation Workers General Union
39.	19.7.2023	工聯職安健協會 Hong Kong Federation of Trade Unions Occupational Safety and Health Association
40.	19.7.2023	職業安全健康局 Occupational Safety and Health Council
41.	21.7.2023	公務員事務局 - 專上學生暑期實習計劃 Civil Service Bureau - Student Summer Internship Programme
42.	12.8.2023	民眾安全服務隊(少年團) Civil Aids Service (Cadet Corps)
43.	18.8.2023	香港海事青年團 Hong Kong Sea Cadet Corps
44.	18.8.2023	海運和航空業實習計劃(海運) Maritime and Aviation Internship Scheme (Maritime)
45.	24.8.2023	公務員事務局局長 Secretary for the Civil Service
46.	7.9.2023	民建聯立法會議員及區議員 LegCo and District Councillors from Democratic Alliance for the Betterment and Progress of Hong Kong
47.	4.10.2023	韓國海員工會 Federation of Korean Seafarers' Union (FKSU)
48.	4.10.2023, 5.10.2023	香港海員工會 Hong Kong Seamen's Union
49.	10.10.2023	香港消防處 Hong Kong Fire Services Department
50.	13.10.2023	中華人民共和國外交部駐香港特別行政區特派員公署 Office of the Commissioner of the Ministry of Foreign Affairs of PRC in HKSAR
51.	20.10.2023	澳門航海學校 Macau Maritime Training School
52.	26.10.2023	民眾安全服務隊 Civil Aid Service
53.	6.11.2023	香港公共行政學院 Hong Kong Institute for Public Administration
54.	6.11.2023	深圳市前海管理局 Shenzhen Qianhai Authority
55.	10.11.2023	香港海事科技學會 Hong Kong Institute of Marine Technology (HKIMT)

附錄 D – 續
APPENDIX D – Cont'd

編號 No.	訪問日期 Date of Visit	機構／代表 Organisation/Representative
56.	12.11.2023, 24.11.2023	香港海運週 2023 (公眾) Hong Kong Maritime Week 2023 (Public)
57.	21.11.2023, 23.11.2023	大連海事大學 Dalian Maritime University
58.	22.11.2023	中華人民共和國海事局 Maritime Safety Administration of the People's Republic of China
59.	23.11.2023	香港物流管理人員協會 Hong Kong Logistics Management Staff Association
60.	23.11.2023	香港物流協會 Hong Kong Logistics Association
61.	23.11.2023	香港領港會 Hong Kong Pilots Association Limited
62.	24.11.2023	海事處青年小組 Marine Department Youth Group
63.	25.11.2023	香港航運物流協會 Hong Kong Sea Transport And Logistics Association
64.	5.12.2023	日本協調控制中心 Japan Mission Control Center
65.	19.12.2023	青松侯寶垣中學 Ching Chung Hau Po Woon Secondary School
66.	21.12.2023	中國海洋石油集團有限公司 China National Offshore Oil Corporation

附錄 E
APPENDIX E

2023 年刊憲的海事及航運法例
Maritime and Shipping Legislations Gazetted, 2023

2023 年在憲報刊登的海事及航運法例：
The maritime and shipping legislation published in the Gazette in 2023:

法例名稱 Title	參考編號 Reference No.
2023 年商船(本地船隻) (證明書及牌照事宜) (修訂)規例 Merchant Shipping (Local Vessels) (Certification and Licensing) (Amendment) Regulation 2023	2023 年第 23 號法律公告 L.N. 23 of 2023
2023 年商船(本地船隻) (一般) (修訂)規例 Merchant Shipping (Local Vessels) (General) (Amendment) Regulation 2023	2023 年第 24 號法律公告 L.N. 24 of 2023
2023 年船舶法例(電子證書和電子航海日誌) (修訂)條例 Shipping Legislation (Electronic Certificates and Electronic Log-books) (Amendment) Ordinance 2023	2023 年第 24 號條例 Ord. No. 24 of 2023
2023 年商船(本地船隻) (安全及檢驗) (修訂)規例 Merchant Shipping (Local Vessels) (Safety and Survey) (Amendment) Regulation 2023	2023 年第 25 號法律公告 L.N. 25 of 2023
2023 年〈2012 年危險品(船運)規例〉(修訂附表 1)公告 Dangerous Goods (Shipping) Regulation 2012 (Amendment of Schedule 1) Notice 2023	2023 年第 26 號法律公告 L.N. 26 of 2023
2023 年領港條例(修訂附表 2 及 3)公告 Pilotage Ordinance (Amendment of Schedules 2 and 3) Notice 2023	2023 年第 27 號法律公告 L.N. 27 of 2023
2023 年船舶及港口管制規例 (修訂附表 3 及 7)公告 Shipping and Port Control Regulations (Amendment of Third and Seventh Schedules) Notice 2023	2023 年第 28 號法律公告 L.N. 28 of 2023
2023 年商船(安全) (載重線) (修訂)規例 Merchant Shipping (Safety) (Load Line) (Amendment) Regulation 2023	2023 年第 101 號法律公告 L.N. 101 of 2023
2023 年商船(安全) (救生設備及布置、召集及訓練) (修訂)規例 Merchant Shipping (Safety) (Life-Saving Appliances and Arrangements, Musters and Training) (Amendment) Regulation 2023	2023 年第 102 號法律公告 L.N. 102 of 2023
2023 年商船(安全) (〈國際海運固體散裝貨物規則〉) (修訂)規例 Merchant Shipping (Safety) (IMSBC Code) (Amendment) Regulation 2023	2023 年第 103 號法律公告 L.N. 103 of 2023
2023 年商船(安全) (無線電通訊) (修訂)規例 Merchant Shipping (Safety) (Radiocommunications) (Amendment) Regulation 2023	2023 年第 104 號法律公告 L.N. 104 of 2023

附錄 E – 續
APPENDIX E – Cont'd

法例名稱 Title	參考編號 Reference No.
2023 年商船(安全)(構造及檢驗)(修訂)規例 Merchant Shipping (Safety) (Construction and Survey) (Amendment) Regulation 2023	2023 年第 105 號法律公告 L.N. 105 of 2023
2023 年商船(防止油類污染)(修訂)規例 Merchant Shipping (Prevention of Oil Pollution) (Amendment) Regulation 2023	2023 年第 106 號法律公告 L.N. 106 of 2023
2023 年商船(本地船隻)(一般)(修訂)(第 2 號)規例 Merchant Shipping (Local Vessels) (General) (Amendment) (No. 2) Regulation 2023	2023 年第 107 號法律公告 L.N. 107 of 2023
2023 年船舶及港口管制(範圍指明)(修訂)公告 Shipping and Port Control (Specification of Areas) (Amendment) Notice 2023	2023 年第 141 號法律公告 L.N. 141 of 2023
海上安全(酒精及藥物)條例草案 Marine Safety (Alcohol and Drugs) Bill	第 27 卷第 51 期 - 第 3 號法律副刊 No. 51 Vol. 27 - Legal Supplement No. 3

附錄 F
APPENDIX F
2023 年輔航設備
Aids to Navigation, 2023

A. 使用中的輔航設備
Aids to Navigation in Use

輔航設備	Aids to Navigation	截至 2023 年 12 月 31 日 As at 31.12.2023
1. 燈浮標	Light Buoy	164
2. 燈航標	Light Beacon	444
3. 雷達應答標	Racon	3
4. 霧角	Fog Horn	7

B. 本年新設的輔航裝置
New Aids Established during the Year

1. 長洲 Cheung Chau	於 2023 年 3 月 31 日設置 3 個名為「長洲」、「石鼓洲東南」和「石鼓洲西南」的方位浮標。 Three cardinal marks namely “Cheung Chau”, “Shek Kwu Chau SE” and “Shek Kwu Chau SW” have been effective on 31 March 2023.
2. 石鼓洲東南 Shek Kwu Chau SE	
3. 石鼓洲西南 Shek Kwu Chau SW	
4. 喜靈洲-A Hei Ling Chau-A	於 2023 年 7 月 21 日設置 10 個名為「喜靈洲-A」至「喜靈洲-J」的閃燈，分別標示喜靈洲避風塘的三合個浮式防波堤。 Ten flashing lights namely “Hei Ling Chau-A” to “Hei Ling Chau-J” have been installed on the 3 Pontoon Floating Barriers at Hei Ling Chau Typhoon Shelter respectively, and have been effective on 21 July 2023.
5. 喜靈洲-B Hei Ling Chau-B	
6. 喜靈洲-C Hei Ling Chau-C	
7. 喜靈洲-D Hei Ling Chau-D	
8. 喜靈洲-E Hei Ling Chau-E	
9. 喜靈洲-F Hei Ling Chau-F	
10. 喜靈洲-G Hei Ling Chau-G	
11. 喜靈洲-H Hei Ling Chau-H	
12. 喜靈洲-I Hei Ling Chau-I	
13. 喜靈洲-J Hei Ling Chau-J	

附錄 F – 續
APPENDIX F – Cont'd

B. 本年新設的輔航裝置 (續)

New Aids Established during the Year (Cont'd)

14.	氣象 13 Weather 13	於 2023 年 10 月 4 日設置 1 個名為「氣象 13」的氣象浮標。 One weather buoy namely “Weather 13” has been effective on 4 October 2023.
15.	氣象 12 Weather 12	於 2023 年 12 月 20 日設置 1 個名為「氣象 12」的氣象浮標。 One weather buoy namely “Weather 12” has been effective on 20 December 2023.

C. 本年拆除的輔航裝置

Aids Discontinued during the Year

1.	長洲 Cheung Chau	於 2023 年 3 月 31 日，2 個名為「長洲」和「石鼓洲」的安全水域浮標已被移走。 Two safe water marks namely “Cheung Chau” and “Shek Kwu Chau” have been removed on 31 March 2023.
2.	石鼓洲 Shek Kwu Chau	
3.	氣象 4 Weather 4	於 2023 年 10 月 4 日，1 個名為「氣象 4」的氣象浮標已被移走。 One weather buoy namely “Weather 4” have been removed on 4 October 2023.

D. 本年遭損毀的輔航裝置

Aids Damaged during the Year

下列燈浮標及燈航標遭損毀，航標燈熄滅。

The light buoys and light beacons listed below were damaged and unlit.

月份	Month	名稱	Name
6	June	奇力北	Kellett North

附錄 F – 續
APPENDIX F – Cont'd

E. 本年改進的輔航裝置
Aids Requisitioned during the Year

1. 下列燈航標已換上全新現代化器材，用以提高光達距離。
The light beacons listed below were upgraded with modern equipment for better luminous range.

月份	Month	名稱	Name
1	January	屯門赤鱸角連接路 南部填海域	TMCLK Southern Landfill
2	February	赤角頭	Chek Kok Tau
		吉澳碼頭	Kat O Pier
8	August	灣仔貨運站 4	Wan Chai PCWA 4
9	September	北丫碼頭	Pak A Pier
		沙橋頭碼頭	Sha Kiu Tau Pier
10	October	早禾坑碼頭	Tso Wo Hang Pier
11	November	鹽田仔碼頭	Yim Tin Tsai Pier

2. 下列燈浮標及燈航標已由全新現代化器材取代，用以提高其可靠性。
The light buoys and light beacons listed below were replaced with modern equipment for higher reliability.

月份	Month	名稱	Name
1	January	北角消防局西碼頭	North Point FSD West Pier
2	February	長排頭	Cheung Pai Tau
		三桠村碼頭	Sam A Tsuen Pier
		西流港碼頭	Sai Lau Kong Pier
3	March	爛角咀	Black Point
		柴灣 1	Chai Wan 1
		北角消防局西碼頭	North Point FSD West Pier
5	May	長洲海傍北	Cheung Chau Praya N
		喜靈洲碼頭	Hei Ling Chau Pier
		啟德發展碼頭 1	Kai Tak Development Pier 1
		啟德發展碼頭 2	Kai Tak Development Pier 2
7	July	鶴咀	Cape D'Aguilar
		啟德前消防碼頭	Kai Tak Ex-Fireboat Pier
		大澳碼頭	Tai O Pier

附錄 F – 續
APPENDIX F – Cont'd

E. 本年改進的輔航裝置 (續)

Aids Requisitioned during the Year (Cont'd)

2. 下列燈浮標及燈航標已由全新現代化器材取代，用以提高其可靠性。(續)
The light buoys and light beacons listed below were replaced with modern equipment for higher reliability.
(Cont'd)

月份	Month	名稱	Name
10	October	香港仔西	Aberdeen West
		船灣 1	Shuen Wan 1
11	November	醉酒灣 2	Rambler Channel 2
		大頭洲碼頭	Tai Tau Chau Pier

3. 下列燈浮標及燈航標已更換太陽能電池，用以提高航標的可靠性。
The solar batteries of the light buoys and light beacons listed below were renewed in order to increase reliability.

月份	Month	名稱	Name
9	September	沙洲導引燈	Sha Chau Leading Light
10	October	黃金海岸 4	Gold Coast 4

附錄 F – 續
APPENDIX F – Cont'd

F. 輔航燈與輔航設備工場員工比例

Ratio of Aids to Staff of Aids to Navigation Unit Workshop

年份 Year	輔航燈 Aids		輔航設備工場員工 ⁽¹⁾ Staff of Aids to Navigation Unit Workshop ⁽¹⁾		比例 Ratio (c) = (a)/(b)
	數目 Number (a)	變動百分率 Percentage Change	數目 Number (b)	變動百分率 Percentage Change	
2014	546	+0.7%	20	0%	27.3
2015	544	-0.4%	19	-5.0%	28.6
2016	554	+1.8%	19	0%	29.2
2017	561	+1.3%	21	+10.5%	26.7
2018	556	-0.9%	23	+9.5%	24.2
2019	558	+0.4%	22	-4.3%	25.2
2020	571	+2.3%	23	+4.5%	24.8
2021	578	+1.2%	19	-17.4%	30.4
2022	596	+3.1%	18	-5.3%	33.1
2023	608	+2.0%	16	-11.1%	38.0

註釋： (1) 不包括負責在香港水域範圍內看管繫船設備／檢修浮泡的 5 位員工。

Note: Excluding five staff who are responsible for looking after the mooring facilities/overhaul of buoys within Hong Kong waters.