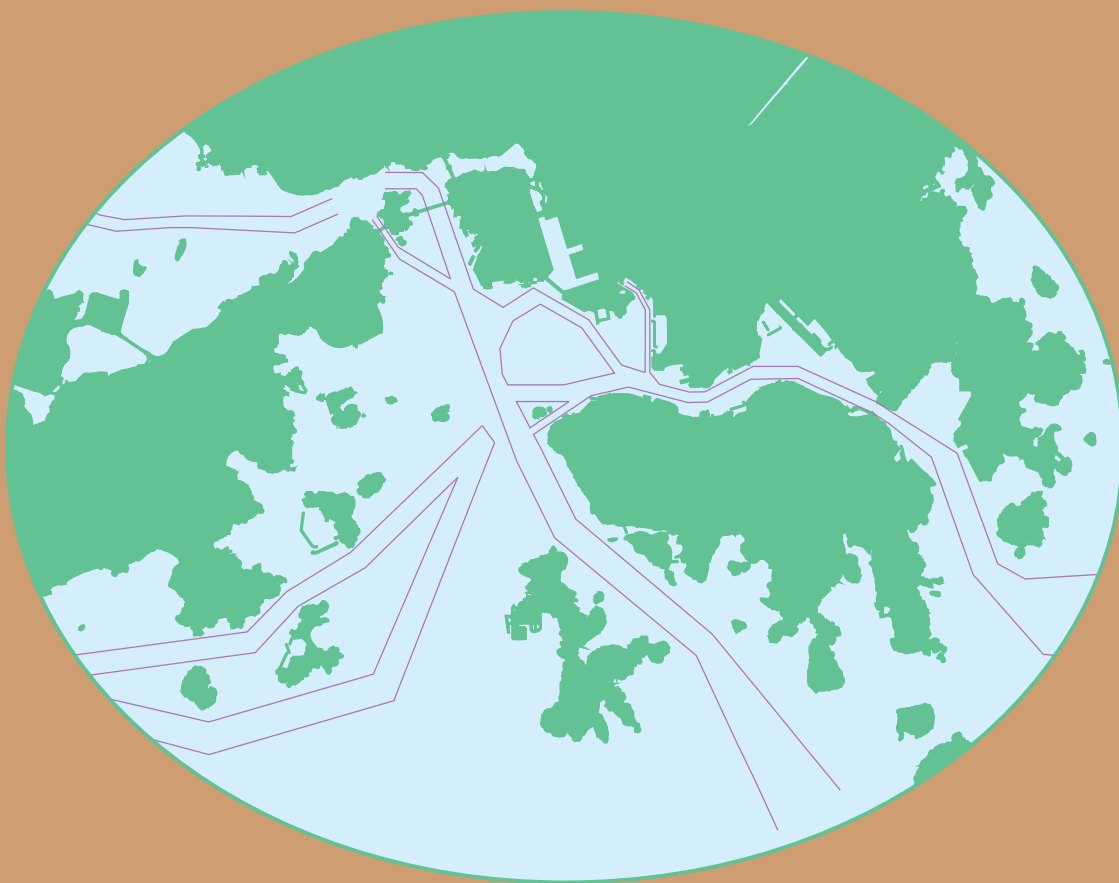


香港港口統計年報

2019

Port of Hong Kong
Statistical Tables



中華人民共和國香港特別行政區海事處
Marine Department
Hong Kong Special Administrative Region
People's Republic of China

香港港口統計年報

PORT OF HONG KONG STATISTICAL TABLES

2019

有關本刊物的查詢，請聯絡：

海事處 策劃、發展協調及港口保安部 統計組

地址：香港中環統一碼頭道 38 號

海港政府大樓 23 樓 2307 室

電話：(852) 2852 3659 圖文傳真：(852) 2542 4638

電郵：st-sec@mardep.gov.hk

Enquiries about this publication can be directed to:

Statistics Section

Planning, Development & Port Security Branch

Marine Department

Address: Room 2307, 23/F, Harbour Building,
38 Pier Road, Central, Hong Kong.

Tel.: (852) 2852 3659 Fax: (852) 2542 4638

E-mail: st-sec@mardep.gov.hk

海事處網站

Website of the Marine Department

<https://www.mardep.gov.hk/>

同心協力，促進卓越海事服務

We are One in Promoting Excellence in Marine Services

目錄 CONTENTS

		頁數 Page No.
註釋		
EXPLANATORY NOTES		iv - viii
摘要	2014 年至 2019 年主要港口統計數字	
SUMMARY	Principal Port Statistics for 2014 - 2019	ix
第一部	港口活動	
PART I	Port Activities	
	<i>抵港／離港的船次</i>	
	<i>Vessel Arrivals/Departures</i>	
表 1	2019 年按主要停泊地點分析抵港遠洋輪船的船次	
TABLE 1	Ocean Vessel Arrivals by Main Berthing Location, 2019	1
表 2	2019 年按主要停泊地點分析離港遠洋輪船的船次	
TABLE 2	Ocean Vessel Departures by Main Berthing Location, 2019	2
表 3	2019 年按船舶類型分析抵港船舶的船次	
TABLE 3	Vessel Arrivals by Ship Type, 2019	3
表 4	2019 年按船旗分析抵港船舶的船次	
TABLE 4	Vessel Arrivals by Flag, 2019	4 - 5
表 5	2019 年按船旗分析曾停靠香港的船舶數目和淨噸位	
TABLE 5	Number and NT of Vessels Calling Hong Kong by Flag, 2019	6 - 7
表 6	2019 年按選定船舶類型分析離港船舶的平均在港停留時間	
TABLE 6	Average Time in Port for Vessels Departing Hong Kong by Selected Ship Type, 2019	8
表 7	2019 年在葵青貨櫃碼頭處理貨物的遠洋輪船統計數字	
TABLE 7	Statistics on Ocean Vessels with Cargo Handled at Kwai Tsing Container Terminals, 2019	9
表 8	2019 年按夏季吃水分析抵港遠洋輪船的船次	
TABLE 8	Ocean Vessel Arrivals by Summer Draft, 2019	10
表 9	2019 年按船舶總長度分析抵港遠洋輪船的船次	
TABLE 9	Ocean Vessel Arrivals by Vessel Length Overall, 2019	10
表 10	2019 年按主要來港原因分析抵港遠洋輪船的船次	
TABLE 10	Ocean Vessel Arrivals by Main Reason of Call, 2019	11
表 11	2019 年按停泊地點及有否目的地分析抵港郵輪船次	
TABLE 11	Cruise Arrivals by Berthing Location by Whether the Trip with Destination, 2019	12
表 12	2019 年跨境客運碼頭的抵港及離港航次統計數字	
TABLE 12	Statistics on Vessel Arrivals and Departures at Cross-Boundary Ferry Terminals, 2019	13
表 13	2019 年按船舶類型分析香港過境船舶的船次	
TABLE 13	Number of Vessel Trips Transit Hong Kong by Ship Type, 2019	14

客運量

Passenger Throughput

表 14	2019 年按跨境客運碼頭分析客運量	
TABLE 14	Passenger Throughput by Cross-Boundary Ferry Terminal, 2019	15
表 15	2019 年按航線分析抵港及離港乘客人次	
TABLE 15	Passenger Arrivals and Departures by Route, 2019	16 - 17

港口貨櫃／貨物吞吐量

Port Container/Cargo Throughput

表 16	2019 年按主要貨物裝卸地點分析港口貨櫃吞吐量	
TABLE 16	Port Container Throughput by Main Cargo Handling Location, 2019	18
表 17	2019 年按貨物種類及運輸方式劃分的裝卸港口貨物	
TABLE 17	Port Cargo Discharged/Loaded by Cargo Type and Mode of Transport, 2019	19

第二部
PART II

港口服務及管理
Port Services and Control

表 18	政府繫泊浮泡統計數字	
TABLE 18	Government Mooring Buoys Statistics	20 - 21
表 19	按分布地點分析香港私人繫泊設備數目 (截至 2019 年年底)	
TABLE 19	Number of Private Moorings Laid in Hong Kong by Location (as at end 2019)	22 - 23
表 20	碇泊處一覽 (截至 2019 年年底)	
TABLE 20	List of Anchorages (as at end 2019)	24 - 25
表 21	避風塘一覽 (截至 2019 年年底)	
TABLE 21	List of Typhoon Shelters (as at end 2019)	26
表 22	公眾貨物裝卸區一覽 (截至 2019 年年底)	
TABLE 22	List of Public Cargo Working Areas (as at end 2019)	26
表 23	垃圾收集、油污和檢控個案統計數字	
TABLE 23	Refuse Collection, Oil Pollution and Prosecution Statistics	27
表 24	按噸位等級分析香港領牌船隻 (截至 2019 年年底)	
TABLE 24	Hong Kong Licensed Vessels by Tonnage Classification (as at end 2019)	28 - 29

		頁數 Page No.
第三部	船舶服務	
PART III	Shipping Services	
表 25	船舶安全監督統計數字	
TABLE 25	Ship Safety Statistics	30 - 32
表 26	本地船隻安全／海事工業安全／海事意外統計數字	
TABLE 26	Local Vessels Safety/Marine Industrial Safety/Marine Accidents Statistics	33 - 38
表 27	海員發證、註冊和僱用統計數字	
TABLE 27	Seafarers' Certification, Registration and Employment Statistics	39 - 45
表 28	香港註冊船舶統計數字 (截至 2019 年年底)	
TABLE 28	Statistics on Ships Registered in Hong Kong (as at end 2019)	46 - 47
表 29	政府船隊統計數字	
TABLE 29	Government Fleet Statistics	48 - 49
表 30	政府船舶所屬部門及可用率情況 (截至 2019 年年底)	
TABLE 30	Departmental Ownership and Availabilities of Government Vessels (as at end 2019)	50
第四部	附錄	
PART IV	Appendices	
附錄 A	海事處組織架構圖 (截至 2019 年年底)	
APPENDIX A	Organisation Chart of the Marine Department (as at end 2019)	A1
附錄 B	海事處的編制和實際員額 (截至 2019 年年底)	
APPENDIX B	Establishment and Strength of the Marine Department (as at end 2019)	A2 - A6
附錄 C	2019 年海事處訓練組舉辦的課程	
APPENDIX C	Training Courses Conducted by Training Section, Marine Department, 2019	A7 - A8
附錄 D	2019 年海事處訪客	
APPENDIX D	Visitors to the Marine Department, 2019	A9 - A11
附錄 E	2019 年刊憲的海事及航運法例	
APPENDIX E	Maritime and Shipping Legislations Gazetted, 2019	A12 - A14
附錄 F	2019 年輔航設備	
APPENDIX F	Aids to Navigation, 2019	A15 - A21

1. 簡介

《香港港口統計年報》是香港海事處編製的港口及海事統計資料一覽表。這本年報輯錄以下統計數字和資料：

- 抵港／離港的船次
- 客運量
- 港口貨櫃／貨物吞吐量
- 港口服務及管理
- 船舶服務
- 海事處組織架構圖
- 海事處的編制和實際員額
- 海事處舉辦的課程
- 海事處訪客
- 刊憲的海事及航運法例
- 輔航設備

2. 資料來源

船舶進出口統計數字

船舶進出口統計數字乃根據船公司、代理人向海事處申報船舶抵達／離開港口的資料時所遞交的申報表 (MD 508 及 MD 510) 編製而成。
(摘要、表 1 – 10)

港口貨櫃吞吐量

在葵青貨櫃碼頭裝運的港口貨櫃統計數字，主要由碼頭經營者提供。在 2019 年以前，葵青貨櫃碼頭以外裝運的遠洋輪船「空」貨櫃統計數字，由海事處根據申報表 MD 508 及 MD 510 編製，所有其他詳細的貨櫃統計數字，皆由政府統計處根據貨物艙單中所列的託運貨物抽取樣本編製而成。自 2019 年開始，葵青貨櫃碼頭以外裝運的遠洋輪船「空」貨櫃統計數字亦由政府統計處根據貨物艙單中所列的託運貨物抽取樣本編製而成。(摘要、表 16)

1. Introduction

The *Port of Hong Kong Statistical Tables* is a collection of Hong Kong Port and Maritime statistical information compiled by the Marine Department. This publication brings together the following statistics and information:

- Vessel Arrivals/Departures
- Passenger Throughput
- Port Container/Cargo Throughput
- Port Services and Control
- Shipping Services
- Organisation Chart of the Marine Department
- Establishment and Strength of the Marine Department
- Training Courses Conducted by the Marine Department
- Visitors to the Marine Department
- Gazetted Maritime and Shipping Legislations
- Aids to Navigation

2. Data Sources

Vessel Statistics

Vessel statistics are based on the declaration forms (MD 508 and MD 510) submitted to the Marine Department by shipping companies/agents for declaring arrivals/departures of vessels under their charge. (Summary Table, Tables 1 – 10)

Port Container Throughput

Statistics on port container throughput handled at Kwai Tsing Container Terminals (KTCT) are mainly obtained from the terminal operators. Prior to 2019, statistics on empty containers (ocean) handled at locations other than KTCT are compiled by the Marine Department based on the declaration forms of MD 508 and MD 510. As for all the other detailed container throughput statistics, they are compiled by the Census and Statistics Department (C&SD) based on a sample of consignments listed in the cargo manifests. Starting from 2019, statistics on empty containers (ocean) handled at locations other than KTCT are also compiled by C&SD based on a sample of consignments listed in the cargo manifests. (Summary Table, Table 16)

港口貨物吞吐量

港口貨物吞吐量是由政府統計處根據貨物艙單中所列的託運貨物抽取樣本編製而成。
(表 17)

停泊／貨物裝卸地點

有關遠洋輪船的主要貨物裝卸地點和主要停泊地點的資料，取自海事處船隻航行監察服務資訊系統所保存的船舶活動報告。(表 1 – 2、7)

3. 用語及分類

容量

在本報告中，船舶的容量是以淨噸位來表示。計算單位為淨噸。淨噸位是由一艘船的船殼內的容量(以立方呎計)，加上在甲板上用以裝載貨物、貯藏品及乘客的空間，再減去船長、高級船員、船員所住的地方、燃料、導航及推進器所佔用的地方。每一淨噸相等於 100 立方呎的容量。

停泊／貨物裝卸地點

停泊／貨物裝卸地點可分為四類：葵青貨櫃碼頭、泊位和倉庫碼頭(包括公眾貨物裝卸區、海運碼頭及啟德郵輪碼頭)、碇泊處和浮泡。

港口貨櫃吞吐量

這是指以標準貨櫃單位計算作為搬運貨物之用的貨櫃數目。一個標準貨櫃單位等同一個二十呎貨櫃的容量。

Port Cargo Throughput

Port cargo statistics are compiled by the Census and Statistics Department based on a sample of consignments listed in the cargo manifests.
(Table 17)

Berthing/Cargo Handling Location

Information on the main cargo handling location and main berthing location in respect of ocean vessels are extracted from the trip activity report kept in the Marine Department's Vessel Traffic Services Information System. (Tables 1 – 2, 7)

3. Terms and Classifications

Capacity

In this report, the capacity of a vessel is expressed in terms of net tonnage (NT). The unit of measurement is net ton. NT is, broadly, the capacity of a ship in cubic feet of the space within the hull, and of the enclosed space above the deck available for cargo, stores and passengers but excluding space used for the accommodation of the master, officers, crew, fuel, navigation and propelling machinery. One net ton is equivalent to 100 cubic feet of capacity.

Berthing/Cargo Handling Location

The berthing/cargo handling location can be distinguished into four types: Kwai Tsing Container Terminals, berths and wharves (including public cargo working areas, Ocean Terminal and Kai Tak Cruise Terminal), anchorages, and buoys.

Port Container Throughput

This refers to the number of containers for moving the cargo in TEU terms. A TEU stands for a twenty-foot equivalent unit.

船旗

這是指船舶的國籍，表明其正式註冊的地方。香港在 1992 年正式開始船舶註冊制度。1997 年 7 月 1 日起，香港特別行政區經中央人民政府授權繼續進行船舶註冊，並根據香港特別行政區的法律以「中國香港」的名義頒發有關證件。

內河航限

內河航限是指香港鄰近水域，一般指香港與珠江、大鵬灣及澳門，及其他在廣東和廣西與香港鄰近水域相連的內陸水域。內河航限的精確定義是指以下範圍內的水域：

- 東至東經 114°30'；
- 南至北緯 22°09'；及
- 西至東經 113°31'。

船舶類型

這是指船舶的特定用途，可分為 18 類：運車船、化學品運載船、普通貨船、其他貨船、郵船／渡輪、散裝乾貨船、漁船／魚類加工船、全槽格式貨櫃船、液化氣體運載船、駁船／躉船／貨艇、油輪、礦沙／散貨／油類混用船、其他液體運載船、遊樂船、滾裝卸式船、半貨櫃船、拖船及其他。

4. 資料定義

遠洋輪船和內河船隻

遠洋輪船和內河船隻的定義是根據所停靠港口是否已超越內河航限而定。遠洋輪船是指越過內河航限行駛的船隻，而內河船隻則指在內河航限內行駛的船隻。內河航限的定義在香港法例第313章《船舶及港口管制條例》訂明。(摘要、表1 – 10、16)

Flag

This is the nationality of the vessel, indicating where she is officially registered. In Hong Kong, the official vessel registration system was set up in 1992. As from 1 July 1997, the Hong Kong Special Administrative Region is authorised by the Central People's Government to continue to maintain a shipping register and issue related certificates under its legislation, using the name "Hong Kong, China".

River Trade Limits

River trade limits mean the waters in the vicinity of Hong Kong, which broadly include the Pearl River, Mirs Bay and Macao, and other inland waters in Guangdong and Guangxi which are accessible from waters in the vicinity of Hong Kong. The precise definition of river trade limits refers to waters within the following boundaries:

- to the East, meridian 114°30' East;
- to the South, parallel 22°09' North; and
- to the West, meridian 113°31' East.

Ship Type

This refers to the known specific function of the ship and can be distinguished into 18 types: car carrier, chemical carrier/tanker, conventional cargo vessel, other cargo vessel, cruise/ferry, dry bulk carrier, fishing/fish processing vessel, fully cellular container vessel, gas carrier/tanker, lighter/barge/cargo junk, oil tanker, ore/bulk/oil carrier, other fluid carrier, pleasure vessel, roll on/roll off, semi-container vessel, tug and others.

4. Data Definitions

Ocean Vessels and River Vessels

Ocean vessels and river vessels are defined according to whether or not their ports of call are beyond the river trade limits. Ocean vessels refer to vessels operating beyond the river trade limits while river vessels refer to vessels plying within the river trade limits. The interpretation of river trade limits is defined under the Shipping and Port Control Ordinance, Cap. 313, Laws of Hong Kong. (Summary Table, Tables 1 – 10, 16)

停泊／貨物裝卸地點

船舶在進入香港水域後可能停泊超過一個停泊地點。若船舶來港的主要原因是裝卸貨物，則主要的貨物裝卸地點和主要的停泊地點以葵青貨櫃碼頭、泊位和倉庫碼頭(包括公眾貨物裝卸區)、碇泊處和浮泡排列。若船舶來港的主要原因不是裝卸貨物，主要停泊地點為停留時間最長的地點。(表 1 – 2、7、16)

內河客船

內河客船的抵港次數是指船隻停泊於港澳碼頭、中國客運碼頭、屯門客運碼頭和海天客運碼頭的次數。屯門客運碼頭於 2012 年 7 月 1 日停止運作及於 2016 年 1 月 28 日復航。由 2017 年開始，內河客船包括在內河航限行駛的郵船。(摘要、表 3 – 5)

Berthing/Cargo Handling Location

A vessel may berth at more than one location after entering into Hong Kong waters. If the main reason of call of the vessel is for loading/discharging cargo, both the main cargo handling location and the main berthing location were presented in the order of KTCT, berths and wharves (including public cargo working areas), anchorages, and buoys. If the main reason of call is not for loading/discharging cargo, the main berthing location refers to the one with the longest stay. (Tables 1 – 2, 7, 16)

River Passenger Vessels

The figures on arrivals of river passenger vessels refer to the number of berthings at the Macau Ferry Terminal (MFT), the China Ferry Terminal (CFT), the Tuen Mun Ferry Terminal (TMFT) and SkyPier. The Tuen Mun Ferry Terminal ceased operation on 1 July 2012 and resumed operation on 28 January 2016. As from 2017, river passenger vessels include cruises plying within the river trade limits. (Summary Table, Tables 3 – 5)

5. 資料局限

遠洋客船數字包括在內河航限以外水域行駛的遊樂船。但是，由於有些船主／代理人沒有申報這些船舶的淨噸位資料給海事處，故遠洋客船的淨噸位數字可能輕微低於實際的數字。(摘要、表 1 – 5)

由於不能準確地統計本地領牌遊樂船和漁船來往香港及內河航限內的船次，故這兩類船隻沒有包括在內河船隻統計範圍內。(摘要、表 3 – 6)

5. Data Limitations

The number of ocean passenger vessels includes pleasure vessels plying beyond the river trade limits. However, as some of their owners/agents do not report NT information to the Marine Department, the total NT for ocean passenger vessels may be slightly under-reported. (Summary Table, Tables 1 – 5)

As accurate number of trips of locally licensed pleasure vessels and fishing vessels plying between Hong Kong and the river trade limits is not available, these two categories of vessels are not included in the river vessel statistics. (Summary Table, Tables 3 – 6)

6. 數字的進位

客運量、港口貨物和貨櫃吞吐量及淨噸位統計數字是計算至最接近的千位。

項目	單位
客運量	千位
港口貨物吞吐量	千公噸
港口貨櫃吞吐量	千個標準貨櫃單位
淨噸位	千噸

由於四捨五入關係，本報告中所列的個別數字加起來可能不等於其總數。另外，變動百分率和比重百分率是以未經進位的數字計算所得。

7. 代號

() 與去年同期比較的變動百分率

^ 變動在 $\pm 0.05\%$ 之間

§ 變動多於 100%

@ 比重百分率少於 0.05

† 少於 500 個標準貨櫃單位／人次／公噸

臨時數字

* 修訂數字

N.A. 沒有數字

- 不適用

海事處

策劃、發展協調及港口保安部

統計組

2020 年 5 月

6. Rounding of Figures

Statistics on passenger throughput, port cargo and container throughput and NT are rounded to the nearest thousand.

Items	Units
Passenger Throughput	thousand units
Port Cargo Throughput	'000 tonnes
Port Container Throughput	'000 TEUs
NT	'000 tons

Figures shown in this report may not add up to the respective totals due to rounding. Furthermore, percentage changes and percentage shares are calculated from unrounded figures.

7. Symbols

() % change over the same period of preceding year

^ Change within $\pm 0.05\%$

§ Change more than 100%

@ Percentage share less than 0.05

† Less than 500 TEUs/passenger journeys/tonnes

Provisional figures

* Revised figures

N.A. Not available

- Not applicable

Statistics Section

Planning, Development & Port Security Branch

Marine Department

May 2020

摘要
SUMMARY
2014 年至 2019 年主要港口統計數字
Principal Port Statistics for 2014 – 2019

	項目 Item	2014	2018	2019	平均每年變動百分率 Average Annual Rate of Change	
					2018-2019	2014-2019
1. 抵港船次	Vessel Arrivals	189 451	174 610	161 252	-7.7%	-3.2%
(a) 遠洋輪船	Ocean Vessels	30 176	25 410	25 388	-0.1%	-3.4%
遠洋貨船	Ocean Cargo Vessels	27 402	24 032	24 407	+1.6%	-2.3%
遠洋客船	Ocean Passenger Vessels	2 774	1 378	981	-28.8%	-18.8%
(b) 內河船隻	River Vessels	159 275	149 200	135 864	-8.9%	-3.1%
內河貨船	River Cargo Vessels	79 316	67 647	64 669	-4.4%	-4.0%
內河客船	River Passenger Vessels	79 959	81 553	71 195	-12.7%	-2.3%
2. 抵港船舶的淨噸位 (千噸)	NT of Vessel Arrivals ('000 tons)	515 854	509 417	513 927	+0.9%	-0.1%
(a) 遠洋輪船	Ocean Vessels	404 657	398 747	398 410	-0.1%	-0.3%
(b) 內河船隻	River Vessels	111 197	110 670	115 517	+4.4%	+0.8%
3. 港口貨櫃吞吐量 (千個標準貨櫃單位)	Port Container Throughput ('000 TEUs)	22 226	19 596	18 303	-6.6%	-3.8%
(i) 按停泊地點分析	By Berthing Location					
葵青貨櫃碼頭	Kwai Tsing Container Terminals	17 587	15 473	14 220	-8.1%	-4.2%
葵青貨櫃碼頭以外	Other than Kwai Tsing Container Terminals	4 639	4 123	4 083	-1.0%	-2.5%
(ii) 按運輸方式分析	By Mode of Transport					
海運	Seaborne	15 591	13 764	12 751	-7.4%	-3.9%
河運	River	6 635	5 833	5 552	-4.8%	-3.5%
4. 港口貨物吞吐量 (千公噸)	Port Cargo Throughput ('000 tonnes)	297 737	258 541	263 315	+1.8%	-2.4%
(a) 海運	Seaborne	197 321	164 550	161 324	-2.0%	-3.9%
(b) 河運	River	100 416	93 991	101 992	+8.5%	+0.3%
5. 跨境渡輪⁽¹⁾及郵輪乘客人次 (千乘客人次)	Cross-boundary Ferry⁽¹⁾ and Cruise Passenger Journeys (‘000 passenger journeys)	30 820	28 058	18 165	-35.3%	-10.0%
6. 客運碼頭乘客人次⁽²⁾ (千乘客人次)	Passenger Journeys at Marine Ferry Terminals⁽²⁾ (‘000 passenger journeys)	26 628	23 780	14 412	-39.4%	-11.6%
(a) 澳門	Macao	21 631	19 517	12 074	-38.1%	-11.0%
(b) 中國內地	Mainland China	4 877	4 264	2 338	-45.2%	-13.7%
(c) 其他	Others	121	-	-	-	-

註釋： (1) 包括海事處轄下的客運碼頭(包括港澳碼頭、中國客運碼頭及屯門客運碼頭)和海天客運碼頭的跨境渡輪。
Notes: Including cross-boundary ferries in Marine Ferry Terminals (including Macau Ferry Terminal, China Ferry Terminal and Tuen Mun Ferry Terminal) under the Marine Department and SkyPier.

(2) 指海事處轄下客運碼頭的乘客人次，包括搭乘直升機的乘客人次。屯門客運碼頭於 2012 年 7 月 1 日停止運作及於 2016 年 1 月 28 日復航。其他航線於 2015 年 1 月 27 日停止運作。
They refer to passenger journeys of Marine Ferry Terminals under the Marine Department. Figures include helicopter passenger journeys. The Tuen Mun Ferry Terminal ceased operation on 1.7.2012 and resumed operation on 28.1.2016. Ferry service to or from other places ceased operation on 27.1.2015.

統計表

Statistical
Tables

表 1
TABLE 1

2019 年按主要停泊地點分析抵港遠洋輪船的船次
Ocean Vessel Arrivals by Main Berthing Location, 2019

主要停泊地點 Main Berthing Location	主要船舶類別 Main Vessel Category								總計 Total			
	貨船 Cargo Vessels				客船 Passenger Vessels							
	抵港船次 No. of Vessel Arrivals		淨噸位 (千噸) NT ('000)		抵港船次 No. of Vessel Arrivals		淨噸位 (千噸) NT ('000)		抵港船次 No. of Vessel Arrivals		淨噸位 (千噸) NT ('000)	
葵青貨櫃碼頭 Kwai Tsing Container Terminals 泊位和倉庫碼頭 ⁽¹⁾ Berths and Wharves ⁽¹⁾ 碇泊處 Anchorage 浮泡 Buoys	(%)		(%)		(%)		(%)		(%)		(%)	
	10 217	(-3.1)	239 935	(-5.7)	0	(-)	0	(-)	10 217	(-3.1)	239 935	(-5.7)
	2 049	(-7.9)	16 503	(-1.0)	618	(-13.0)	20 252	(-2.6)	2 667	(-9.1)	36 755	(-1.9)
	12 120	(+7.9)	118 984	(+16.1)	38	(-28.3)	56	(-16.0)	12 158	(+7.7)	119 039	(+16.1)
	21	(-41.7)	86	(-41.3)	325	(-47.2)	2 594	(-36.7)	346	(-46.9)	2 681	(-36.9)
總計 Total	24 407	(+1.6)	375 508	(+0.5)	981	(-28.8)	22 903	(-8.2)	25 388	(-0.1)	398 410	(-0.1)

註釋： (1) 包括公眾貨物裝卸區、海運碼頭及啟德郵輪碼頭。
Note: Including public cargo working areas, Ocean Terminal and Kai Tak Cruise Terminal.

表 2
TABLE 2

2019 年按主要停泊地點分析離港遠洋輪船的船次
Ocean Vessel Departures by Main Berthing Location, 2019

主要停泊地點 Main Berthing Location	主要船舶類別 Main Vessel Category				總計 Total			
	貨船 Cargo Vessels		客船 Passenger Vessels					
	離港船次 No. of Vessel Departures	淨噸位 (千噸) NT ('000)	離港船次 No. of Vessel Departures	淨噸位 (千噸) NT ('000)	離港船次 No. of Vessel Departures	淨噸位 (千噸) NT ('000)		
葵青貨櫃碼頭 Kwai Tsing Container Terminals	(%)	(%)	(%)	(%)	(%)	(%)		
	10 283 (-2.5)	239 425 (-5.7)	0 (-100.0)	0 (-100.0)	10 283 (-2.5)	239 425 (-5.8)		
泊位和倉庫碼頭 ⁽¹⁾ Berths and Wharves ⁽¹⁾	2 136 (-7.3)	16 859 (-3.1)	660 (-5.7)	20 309 (+0.4)	2 796 (-6.9)	37 168 (-1.2)		
碇泊處 Anchorages	11 673 (+7.9)	122 783 (+18.7)	33 (-58.8)	73 (-63.6)	11 706 (+7.4)	122 856 (+18.5)		
浮泡 Buoys	9 (-66.7)	36 (-68.1)	325 (-47.1)	2 592 (-36.7)	334 (-47.9)	2 628 (-37.5)		
總計 Total	24 101 (+1.7)	379 104 (+1.1)	1 018 (-27.0)	22 974 (-6.9)	25 119 (+0.1)	402 078 (+0.6)		

註釋： (1) 包括公眾貨物裝卸區、海運碼頭及啟德郵輪碼頭。
Note: Including public cargo working areas, Ocean Terminal and Kai Tak Cruise Terminal.

表 3
TABLE 3

2019 年按船舶類型分析抵港船舶的船次
Vessel Arrivals by Ship Type, 2019

船舶類型 Ship Type	遠洋輪船 Ocean Vessels		內河船隻 River Vessels		總計 Total	
	抵港船次 No. of Vessel Arrivals	比重 百分率 Percentage Share	抵港船次 No. of Vessel Arrivals	比重 百分率 Percentage Share	抵港船次 No. of Vessel Arrivals	比重 百分率 Percentage Share
運車船 Car Carrier	(%) 183 (-13.7)	0.7%	(%) 7 (-30.0)	@	(%) 190 (-14.4)	0.1%
化學品運載船 Chemical Carrier/Tanker	600 (+8.1)	2.4%	247 (+50.6)	0.2%	847 (+17.8)	0.5%
普通貨船 Conventional Cargo Vessel	1 737 (-9.9)	6.8%	4 297 (-18.8)	3.2%	6 034 (-16.4)	3.7%
郵船／渡輪 Cruise/Ferry	829 (-28.1)	3.3%	71 195 (-12.7)	52.4%	72 024 (-12.9)	44.7%
散裝乾貨船 Dry Bulk Carrier	4 382 (+31.7)	17.3%	12 405 (+16.4)	9.1%	16 787 (+20.1)	10.4%
漁船／魚類加工船 Fishing/Fish Processing Vessel	303 (-13.7)	1.2%	N.A.	N.A.	303 (-13.7)	0.2%
全槽格式貨櫃船 Fully Cellular Container Vessel	15 212 (-4.0)	59.9%	34 718 (-9.0)	25.6%	49 930 (-7.6)	31.0%
液化氣體運載船 Gas Carrier/Tanker	382 (+4.4)	1.5%	134 (-21.2)	0.1%	516 (-3.7)	0.3%
駁船／躉船／貨艇 Lighter/Barge/Cargo Junk	3 (-89.7)	@	918 (-28.2)	0.7%	921 (-29.5)	0.6%
油輪 Oil Tanker	930 (+7.8)	3.7%	419 (-3.2)	0.3%	1 349 (+4.1)	0.8%
礦沙／散貨／油類混用船 Ore/Bulk/Oil (OBO) Carrier	29 (+26.1)	0.1%	3 (+50.0)	@	32 (+28.0)	@
遊樂船 Pleasure Vessel	152 (-32.4)	0.6%	N.A.	N.A.	152 (-32.4)	0.1%
滾裝卸式船 Roll On/Roll Off	134 (+10.7)	0.5%	35 (+25.0)	@	169 (+13.4)	0.1%
半貨櫃船 Semi-container Vessel	109 (+36.3)	0.4%	9 943 (+3.3)	7.3%	10 052 (+3.6)	6.2%
拖船 Tug	82 (-31.7)	0.3%	1 283 (-19.7)	0.9%	1 365 (-20.5)	0.8%
其他 Others	321 (+55.8)	1.3%	260 (+17.1)	0.2%	581 (+35.7)	0.4%
總計 Total	25 388 (-0.1)	100.0%	135 864 (-8.9)	100.0%	161 252 (-7.7)	100.0%

註釋： 2019 年沒有「其他貨船」及「其他液體運載船」的抵港船次。

Note: There was no vessel arrival of “other cargo vessel” and “other fluid carrier” in 2019.

表 4
TABLE 4

2019 年按船旗分析抵港船舶的船次
Vessel Arrivals by Flag, 2019

船旗 Flag	遠洋輪船 Ocean Vessels				內河船隻 River Vessels				總計 Total			
	抵港船次 No. of Vessel Arrivals		淨噸位 (千噸) NT ('000)		抵港船次 No. of Vessel Arrivals		淨噸位 (千噸) NT ('000)		抵港船次 No. of Vessel Arrivals		淨噸位 (千噸) NT ('000)	
	(%)		(%)		(%)		(%)		(%)		(%)	
安提瓜和巴布達 Antigua and Barbuda	286	(-18.5)	1 726	(-22.2)	49	(+2.1)	240	(-12.7)	335	(-16.0)	1 966	(-21.1)
巴哈馬 Bahamas	717	(+4.7)	21 360	(+0.9)	99	(+28.6)	7 045	(-1.1)	816	(+7.1)	28 406	(+0.4)
伯利茲 Belize	213	(+35.7)	592	(+20.9)	27	(+12.5)	78	(+44.8)	240	(+32.6)	670	(+23.3)
中國 China	5 199	(+7.3)	21 317	(+33.4)	86 503	(-2.6)	69 298	(+6.6)	91 702	(-2.1)	90 615	(+11.9)
塞浦路斯 Cyprus	409	(-20.3)	5 733	(-32.0)	36	(-5.3)	701	(+5.5)	445	(-19.2)	6 435	(-29.2)
丹麥 Denmark	193	(-16.5)	9 731	(-17.4)	11	(+37.5)	310	(-6.8)	204	(-14.6)	10 041	(-17.1)
德國 Germany	103	(-45.5)	3 816	(-47.3)	3	(-70.0)	109	(-71.7)	106	(-46.7)	3 925	(-48.5)
希臘 Greece	79	(+12.9)	3 028	(+11.3)	11	(+22.2)	314	(-1.3)	90	(+13.9)	3 342	(+10.0)
中國香港 Hong Kong, China	3 172	(-1.9)	76 893	(+6.8)	47 517	(-19.0)	14 516	(-13.7)	50 689	(-18.1)	91 410	(+2.9)
意大利 Italy	78	(+21.9)	2 351	(+27.9)	7	(0)	549	(§)	85	(+19.7)	2 900	(+44.5)
牙買加 Jamaica	60	(-78.6)	319	(-78.6)	0	(-)	0	(-)	60	(-78.6)	319	(-78.6)
日本 Japan	75	(-14.8)	4 005	(+3.7)	3	(-)	95	(-)	78	(-11.4)	4 100	(+6.2)
韓國 Republic of Korea	695	(-2.3)	6 078	(-0.3)	62	(+31.9)	409	(+60.1)	757	(-0.1)	6 487	(+2.2)
利比里亞 Liberia	2 408	(+11.8)	47 772	(-0.3)	234	(+23.8)	4 865	(+42.9)	2 642	(+12.8)	52 636	(+2.6)
馬來西亞 Malaysia	78	(§)	631	(§)	3	(-40.0)	14	(-49.0)	81	(§)	644	(§)
馬耳他 Malta	798	(+5.0)	29 491	(+10.7)	60	(+15.4)	1 593	(+26.2)	858	(+5.7)	31 083	(+11.4)
馬紹爾群島 Marshall Islands	1 439	(-9.5)	28 437	(-9.9)	191	(+18.6)	3 267	(+9.5)	1 630	(-6.9)	31 704	(-8.3)

表 4 – 續
TABLE 4 – Cont'd

船旗 Flag	遠洋輪船 Ocean Vessels				內河船隻 River Vessels				總計 Total			
	抵港船次 No. of Vessel Arrivals		淨噸位 (千噸) NT ('000)		抵港船次 No. of Vessel Arrivals		淨噸位 (千噸) NT ('000)		抵港船次 No. of Vessel Arrivals		淨噸位 (千噸) NT ('000)	
	(%)		(%)		(%)		(%)		(%)		(%)	
挪威 Norway	75	(+33.9)	998	(+21.8)	14	(-22.2)	210	(-24.4)	89	(+20.3)	1 208	(+10.1)
巴拿馬 Panama	4 243	(+3.1)	62 401	(+4.6)	490	(+5.6)	5 591	(+23.1)	4 733	(+3.3)	67 992	(+5.9)
葡萄牙 Portugal	392	(-19.7)	6 952	(-26.1)	43	(+38.7)	751	(+55.4)	435	(-16.2)	7 704	(-22.2)
塞拉利昂 Sierra Leone	134	(-34.0)	247	(-14.1)	5	(-16.7)	12	(-13.9)	139	(-33.5)	260	(-14.1)
新加坡 Singapore	2 539	(+4.6)	42 231	(+3.9)	213	(+2.9)	2 785	(-10.8)	2 752	(+4.5)	45 016	(+2.9)
台灣 Taiwan	634	(+9.9)	4 905	(+34.7)	43	(+2.4)	443	(-6.1)	677	(+9.4)	5 348	(+30.1)
泰國 Thailand	189	(-6.0)	1 154	(-2.9)	36	(0)	341	(+18.3)	225	(-5.1)	1 494	(+1.2)
多哥 Togo	66	(-5.7)	121	(-11.4)	4	(0)	6	(-44.5)	70	(-5.4)	127	(-14.0)
英國 United Kingdom	308	(-32.9)	8 411	(-43.4)	32	(-15.8)	672	(-43.1)	340	(-31.6)	9 083	(-43.4)
越南 Vietnam	364	(-1.6)	1 867	(+3.7)	62	(+29.2)	225	(+7.3)	426	(+1.9)	2 092	(+4.1)
其他 ⁽¹⁾ Others ⁽¹⁾	442	(-9.2)	5 843	(+23.1)	106	(+26.2)	1 076	(+7.7)	548	(-4.0)	6 919	(+20.4)
總計 Total	25 388	(-0.1)	398 410	(-0.1)	135 864	(-8.9)	115 517	(+4.4)	161 252	(-7.7)	513 927	(+0.9)

註釋： (1) 指該年所有遠洋輪船抵港船次總數少於 50 船次的旗號。

Note: Referring to those flags of which the total number of ocean vessel arrivals being less than 50 during the year.

表 5
TABLE 5

2019 年按船旗分析曾停靠香港的船舶數目和淨噸位
Number and NT of Vessels Calling Hong Kong by Flag, 2019

船旗 Flag	遠洋輪船 ⁽¹⁾ Ocean Vessels ⁽¹⁾				內河船隻 ⁽¹⁾ River Vessels ⁽¹⁾			
	船舶數目 Number of Vessels		淨噸位 (千噸) NT ('000)		船舶數目 Number of Vessels		淨噸位 (千噸) NT ('000)	
	(%)		(%)		(%)		(%)	
安提瓜和巴布達 Antigua and Barbuda	49	(+11.4)	273	(-19.8)	10	(-23.1)	55	(-49.4)
巴哈馬 Bahamas	98	(-1.0)	2 269	(-4.1)	28	(+21.7)	434	(-20.0)
伯利茲 Belize	70	(-6.7)	191	(-8.8)	25	(+19.0)	74	(+55.7)
中國 China	503	(-3.3)	5 693	(+13.2)	1 513	(-0.1)	4 823	(+38.7)
塞浦路斯 Cyprus	91	(-13.3)	1 941	(-20.9)	32	(+18.5)	638	(+19.8)
丹麥 Denmark	64	(-20.0)	3 195	(-19.5)	10	(+25.0)	253	(-24.0)
德國 Germany	38	(-5.0)	1 382	(-12.3)	2	(-75.0)	85	(-74.8)
希臘 Greece	43	(+4.9)	1 685	(+5.7)	11	(+22.2)	314	(-1.3)
中國香港 Hong Kong, China	916	(+3.5)	22 046	(+13.2)	525	(+0.6)	3 516	(+5.2)
意大利 Italy	26	(+8.3)	812	(+16.0)	4	(-20.0)	237	(+68.9)
日本 Japan	35	(-10.3)	1 461	(+16.1)	3	(-)	95	(-)
韓國 Republic of Korea	133	(+7.3)	1 219	(+25.4)	43	(+30.3)	298	(+52.3)
利比里亞 Liberia	589	(+5.7)	15 947	(+5.6)	149	(+20.2)	3 407	(+35.5)
馬來西亞 Malaysia	35	(+59.1)	340	(\$)	3	(-40.0)	14	(-49.0)
馬耳他 Malta	235	(+8.3)	8 430	(+15.8)	55	(+14.6)	1 464	(+18.7)
馬紹爾群島 Marshall Islands	537	(+7.8)	12 191	(+8.6)	155	(+26.0)	2 762	(+15.4)
挪威 Norway	36	(+24.1)	695	(+17.9)	12	(-29.4)	183	(-27.3)
巴拿馬 Panama	1 267	(+11.9)	22 364	(+14.0)	315	(+23.0)	4 258	(+31.7)

表 5 – 續
TABLE 5 – Cont'd

船旗 Flag	遠洋輪船 ⁽¹⁾ Ocean Vessels ⁽¹⁾				內河船隻 ⁽¹⁾ River Vessels ⁽¹⁾			
	船舶數目 Number of Vessels		淨噸位 (千噸) NT ('000)		船舶數目 Number of Vessels		淨噸位 (千噸) NT ('000)	
	(%)		(%)		(%)		(%)	
菲律賓 Philippines	23	(-11.5)	191	(+8.4)	9	(§)	105	(§)
葡萄牙 Portugal	79	(0)	2 184	(-4.6)	29	(+52.6)	522	(+58.4)
塞拉利昂 Sierra Leone	33	(-8.3)	79	(-31.6)	3	(-40.0)	9	(-17.7)
新加坡 Singapore	450	(-9.3)	9 718	(-8.3)	127	(-0.8)	2 017	(-12.2)
台灣 Taiwan	50	(+13.6)	767	(+37.3)	8	(-11.1)	120	(-28.3)
泰國 Thailand	34	(-5.6)	264	(+14.3)	8	(0)	87	(+72.7)
多哥 Togo	20	(-13.0)	36	(-27.9)	4	(+33.3)	6	(-16.9)
英國 United Kingdom	69	(-40.0)	2 062	(-54.1)	22	(-21.4)	495	(-46.8)
越南 Vietnam	114	(-5.0)	614	(-6.4)	32	(-5.9)	129	(+4.3)
其他 ⁽²⁾ Others ⁽²⁾	237	(+0.9)	3 350	(+20.9)	75	(+21.0)	882	(+12.2)
總計 Total	5 874	(+2.3)	121 396	(+4.9)	3 212	(+5.1)	27 282	(+14.8)

註釋： (1) 此表內的遠洋輪船及內河船隻數目不能直接地加在一起，因為同一艘船舶在一年內不同的抵港旅程可能會被歸納於遠洋及內河船舶類別，視乎該抵港旅程是否超越內河航限而定。

Notes:

The number of ocean vessels and river vessels in this table cannot be grouped together by simple addition as the same vessel may be classified as ocean and river vessel in different trips during a year depending on whether her trips to Hong Kong were beyond the river trade limits or not.

(2) 指該年所有遠洋輪船抵港船舶總數少於 20 船舶的旗號。

Referring to those flags of which the total number of ocean vessels calling Hong Kong being less than 20 during the year.

表 6
TABLE 6

2019 年按選定船舶類型分析離港船舶的平均在港停留時間
Average Time in Port for Vessels Departing Hong Kong by Selected Ship Type, 2019

小時
Hours

船舶類型 Ship Type	遠洋輪船 Ocean Vessels	內河船隻 River Vessels	總計 Total
所有船舶類型 All Ship Types	23	37⁽¹⁾	33⁽¹⁾
當中： Of Which:			
全槽格式貨櫃船 Fully Cellular Container Vessel	18	34	29
散裝乾貨船 Dry Bulk Carrier	27	34	32
半貨櫃船 Semi-container Vessel	21	39	39
普通貨船 Conventional Cargo Vessel	30	26	27
拖船 Tug	201	133	138
油輪 Oil Tanker	35	74	42

註釋： (1) 不包括郵船／渡輪、漁船／魚類加工船及遊樂船的内河船隻。

Note: Excluding cruises/ferries, fishing/fish processing vessels and pleasure vessels under river vessels.

表 7
TABLE 7

2019 年在葵青貨櫃碼頭處理貨物的遠洋輪船統計數字
Statistics on Ocean Vessels with Cargo Handled at Kwai Tsing Container Terminals, 2019

項目 Item	抵港船次 No. of Vessel Arrivals	比重百分率 Percentage Share
在葵青貨櫃碼頭處理貨物的遠洋輪船 Ocean Vessels with Cargo Handled at Kwai Tsing Container Terminals	(%) 10 178 (-3.1)	100.0%
- 按載重噸分析 Analysed by Deadweight Tonnage (DWT)		
< 10 000	276 (-12.9)	2.7%
10 000 - < 20 000	1 505 (-9.8)	14.8%
20 000 - < 30 000	2 625 (+6.2)	25.8%
30 000 - < 40 000	1 528 (+6.5)	15.0%
40 000 - < 50 000	188 (-25.7)	1.8%
50 000 - < 100 000	2 219 (-7.5)	21.8%
100 000 - < 120 000	949 (-6.0)	9.3%
≥ 120 000	888 (-6.0)	8.7%
- 按主要貿易地區／國家分析 (根據所申報的上一個停靠港口) Analysed by Principal Trading Region/Country (Based on Previous Port Reported)		
亞洲 Asia	9 469 (-1.2)	93.0%
– 台灣 – Taiwan	2 035 (+4.3)	20.0%
– 中國內地 – Mainland China	1 935 (-7.2)	19.0%
– 越南 – Vietnam	1 388 (+7.8)	13.6%
– 新加坡 – Singapore	1 144 (+0.7)	11.2%
– 泰國 – Thailand	778 (-11.3)	7.6%
– 韓國 – Republic of Korea	611 (-14.9)	6.0%
– 馬來西亞 – Malaysia	477 (-6.8)	4.7%
– 日本 – Japan	458 (+14.2)	4.5%
– 菲律賓 – Philippines	423 (+8.5)	4.2%
– 印度尼西亞 – Indonesia	107 (-25.7)	1.1%
– 其他 – Others	113 (+36.1)	1.1%
北美洲 North America	174 (-46.6)	1.7%
中美洲、南美洲 Central and South America	173 (-17.2)	1.7%
大洋洲 Oceania	164 (+0.6)	1.6%
西歐 Western Europe	43 (-32.8)	0.4%
其他 Others	155 (+2.6)	1.5%
平均在香港港口停留時間 (包括停留在葵青貨櫃碼頭以外的時間) (小時) Average Time in Hong Kong Port (Including Time Outside Kwai Tsing Container Terminals) (Hours)	13.6	

表 8
TABLE 8

2019 年按夏季吃水分析抵港遠洋輪船的船次
Ocean Vessel Arrivals by Summer Draft, 2019

夏季吃水 (米) Summer Draft (m)	抵港船次 No. of Vessel Arrivals	比重百分率 Percentage Share
	(%)	
< 4	2 460 (-17.1)	9.7%
4 – < 6	2 609 (+19.6)	10.3%
6 – < 8	2 776 (+6.7)	10.9%
8 – < 10	6 348 (-3.3)	25.0%
10 – < 12	3 810 (+14.4)	15.0%
12 – < 14	3 774 (+4.5)	14.9%
14 – < 16	3 166 (-13.7)	12.5%
16 – < 18	118 (-20.8)	0.5%
≥ 18	327 (-2.1)	1.3%
總計 Total	25 388 (-0.1)	100.0%

表 9
TABLE 9

2019 年按船舶總長度分析抵港遠洋輪船的船次
Ocean Vessel Arrivals by Vessel Length Overall, 2019

船舶總長度 (米) Vessel Length Overall (m)	抵港船次 No. of Vessel Arrivals	比重百分率 Percentage Share
	(%)	
< 30	254 (-26.8)	1.0%
30 – < 50	331 (-20.4)	1.3%
50 – < 100	4 533 (-2.1)	17.9%
100 – < 150	4 441 (+1.8)	17.5%
150 – < 200	7 793 (+2.5)	30.7%
200 – < 250	3 038 (+3.4)	12.0%
250 – < 300	2 835 (+4.1)	11.2%
300 – < 350	1 328 (-8.6)	5.2%
≥ 350	835 (-10.9)	3.3%
總計 Total	25 388 (-0.1)	100.0%

表 10
TABLE 10

2019 年按主要來港原因分析抵港遠洋輪船的船次
Ocean Vessel Arrivals by Main Reason of Call, 2019

主要來港原因 Main Reason of Call	抵港船次 No. of Vessel Arrivals		比重百分率 Percentage Share
	(%)		
裝貨、卸貨 Loading and Discharging Cargo	15 079	(-5.5)	59.4%
補充燃料 Bunkers	3 482	(+12.0)	13.7%
卸貨 Discharging Cargo	1 895	(+7.8)	7.5%
交換文件 Switch Documents	1 641	(+28.9)	6.5%
船上用品補給 (燃料除外) Taking Stores (Except Bunkers)	1 089	(+22.4)	4.3%
旅遊 (郵輪) Tour (Cruise)	824	(-28.0)	3.2%
裝貨 Loading Cargo	308	(-23.4)	1.2%
消遣／運動 (遊艇) Pleasure/Sports (Pleasure Vessels)	149	(-32.9)	0.6%
緊急修理、非例行入乾塢 Emergency Repair, Non-routine Dry Docking	31	(-20.5)	0.1%
船員變動 Change of Crew	27	(-28.9)	0.1%
例行入乾塢 Routine Dry Docking	12	(+50.0)	@
其他 Others	851	(+50.1)	3.4%
總計 Total	25 388	(-0.1)	100.0%

表 11
TABLE 11

2019 年按停泊地點及有否目的地分析抵港郵輪船次⁽¹⁾
Cruise Arrivals⁽¹⁾ by Berthing Location by Whether the Trip with Destination, 2019

停泊地點 ⁽³⁾ Berthing Location ⁽³⁾	有目的地 With Destination		公海 ⁽²⁾ High Seas ⁽²⁾		總計 Total	
	抵港 郵輪船次 No. of Cruise Arrivals	變動百分率 Percentage Change	抵港 郵輪船次 No. of Cruise Arrivals	變動百分率 Percentage Change	抵港 郵輪船次 No. of Cruise Arrivals	變動百分率 Percentage Change
海運大廈 Ocean Terminal	40	+8.1%	332	-8.0%	372	-6.5%
啟德郵輪碼頭 Kai Tak Cruise Terminal	122	+3.4%	54	+1.9%	176	+2.9%
浮泡和碇泊處 Buoys and Anchorages	0	-100.0%	328	-47.4%	328	-47.5%
其他 ⁽⁴⁾ Others ⁽⁴⁾	0	-100.0%	2	-33.3%	2	-50.0%
總計 Total	162	+3.2%	716	-31.2%	878	-26.7%

註釋： (1) 不包括非載客的船次，例如緊急修理、補充燃料等。

Notes: Excluding non-passenger carrying trips, e.g. emergency repair, bunkers, etc.

(2) 根據海商法，公海的定義是指不屬於任何國家領海或內水的海域。

According to Maritime Law, High Seas is defined as the waters lying outside the territorial waters of any countries.

(3) 如郵輪在進入香港水域後於超過一個地點停泊，停泊地點指停留時間最長的地點。

If a cruise berths at more than one location after entering into Hong Kong waters, the berthing location refers to the one with the longest stay.

(4) 包括私人泊位和倉庫碼頭、船塢及葵青貨櫃碼頭。

Including private berths and wharves, docks, and Kwai Tsing Container Terminals.

表 12
TABLE 12

2019 年跨境客運碼頭⁽¹⁾的抵港及離港航次統計數字⁽²⁾
Statistics on Vessel Arrivals and Departures at Cross-Boundary Ferry Terminals^{(1) (2)}, 2019

來往 ⁽³⁾ From/To ⁽³⁾	運輸工具類別 Type of Carrier	提供服務的船隻 ／直升機數目 No. of Vessels/ Helicopters in Service	抵港 Arrivals				離港 Departures			
			航次 No. of Trips		淨噸位(千噸) NT ('000)		航次 No. of Trips		淨噸位(千噸) NT ('000)	
澳門 Macao	雙體船 Catamaran	(%) 36 (0)	(%) 33 014	(-19.3)	(%) 7 151	(-19.3)	(%) 33 077	(-20.7)	(%) 7 163	(-20.8)
	噴射飛翼船 Jetfoil	8 (-27.3)	10 913	(-20.0)	1 019	(-20.5)	10 918	(-20.5)	1 019	(-21.0)
	直升機 Helicopter	6 (0)	4 787	(-22.7)	-	(-)	4 787	(-22.7)	-	(-)
小計 – 澳門 Sub-total - Macao			48 714	(-19.8)	8 170	(-19.5)	48 782	(-20.9)	8 182	(-20.8)
高明 Gaoming	雙體船 Catamaran	2 (0)	339	(+43.6)	54	(+32.1)	340	(+44.7)	54	(+33.1)
廣州 Guangzhou	直升機 Helicopter	1 (-)	✕	(-)	-	(-)	0	(-)	-	(-)
虎門 Humen	雙體船 Catamaran	5 (+25.0)	1 814	(+0.2)	220	(-10.6)	1 804	(-0.1)	219	(-10.8)
江門 Jiangmen	雙體船 Catamaran	1 (0)	386	(\$)	47	(\$)	385	(\$)	47	(\$)
蓮花山 ⁽⁴⁾ Lianhuashan ⁽⁴⁾	雙體船 Catamaran	11 (+37.5)	1 980	(-17.6)	322	(-18.3)	2 094	(-15.7)	341	(-16.5)
南沙 Nansha	雙體船 Catamaran	11 (+57.1)	916	(\$)	152	(\$)	920	(\$)	152	(\$)
蛇口 Shekou	雙體船 Catamaran	24 (+26.3)	8 072	(+0.6)	1 078	(+2.4)	8 001	(+0.6)	1 067	(+2.4)
深圳 Shenzhen	雙體船 Catamaran	6 (+20.0)	1 463	(-0.5)	253	(+11.1)	1 453	(+0.6)	252	(+12.2)
	直升機 Helicopter	1 (-)	✕	(-)	-	(-)	5	(-)	-	(-)
順德 Shunde	雙體船 Catamaran	4 (+33.3)	1 334	(-22.1)	230	(-21.2)	1 332	(-23.0)	229	(-22.0)
中山 Zhongshan	雙體船 Catamaran	8 (-11.1)	4 367	(+3.9)	728	(+2.5)	4 282	(+3.5)	713	(+2.0)
珠海 Zhuhai	雙體船 Catamaran	10 (-16.7)	6 543	(-0.9)	978	(-6.3)	6 633	(-4.7)	985	(-9.0)
小計 – 內河港口 Sub-total - River Trade Ports			27 219	(+0.9)	4 062	(-0.6)	27 249	(^)	4 060	(-1.4)
總計 Total			75 933	(-13.4)	12 231	(-14.1)	76 031	(-14.5)	12 242	(-15.3)

註釋： (1) 指海事處轄下的客運碼頭(包括港澳碼頭、中國客運碼頭及屯門客運碼頭)和海天客運碼頭。

Notes: It refers to Marine Ferry Terminals (including Macau Ferry Terminal, China Ferry Terminal and Tuen Mun Ferry Terminal) under the Marine Department and SkyPier.

(2) 數字不包括非載客的跨境渡輪航次。

Non-passenger carrying trips of cross-boundary ferry are excluded.

(3) 指抵港航程的起點站或離港航程的終點站。年內沒有來往斗門的航次。

It refers to the origin of arrival trip or the destination of departure trip. There was no vessel trip from/to Doumen during the year.

(4) 包括海天客運碼頭經南沙來往蓮花山的航次及以南沙為起點站或終點站的航次。

Including trips between SkyPier from/to Lianhuashan via Nansha as well as arrival and departure trips from/to Nansha as origin/destination.

✕ 少於 5 程。

Less than 5 trips.

資料來源： 海事處客運碼頭組及香港國際機場客運碼頭服務有限公司

Data Sources: Ferry Terminals Section, Marine Department and Hong Kong International Airport Ferry Terminal Services Ltd.

表 13
TABLE 13

2019 年按船舶類型分析香港過境船舶的船次⁽¹⁾
Number of Vessel Trips Transit Hong Kong⁽¹⁾ by Ship Type, 2019

船舶類型 Ship Type	過境船次 No. of Vessel Trips Transit Hong Kong	
		(%)
全槽格式貨櫃船 Fully Cellular Container Vessel	15 097	(-7.6)
拖船 Tug	5 980	(§)
散裝乾貨船 Dry Bulk Carrier	409	(+48.2)
液化氣體運載船 Gas Carrier/Tanker	260	(+5.3)
普通貨船 Conventional Cargo Vessel	182	(0)
油輪 Oil Tanker	127	(+33.7)
其他 ⁽²⁾ Others ⁽²⁾	218	(-44.8)
總計 Total	22 273	(+27.1)

註釋： (1) 只包括曾提供到達前通知書的過境香港水域船舶的船次。
Notes: Including only those vessel trips transit Hong Kong waters with Pre-arrival Notification.

(2) 包括化學品運載船。
Including chemical carriers/tankers.

資料來源： 海事處船隻航行監察中心
Data Source: Vessel Traffic Centre, Marine Department

表 14
TABLE 14

2019 年按跨境客運碼頭分析客運量
Passenger Throughput by Cross-Boundary Ferry Terminal, 2019

千 ('000)

來往 From/To	澳門 Macao	內河港口 River Trade Ports	總計 Total
	(%)	(%)	(%)
海事處轄下客運碼頭 ⁽¹⁾ Marine Ferry Terminals ⁽¹⁾	12 074 (-38.1)	2 338 (-45.2)	14 412 (-39.4)
港澳碼頭 ⁽²⁾ Macau Ferry Terminal ⁽²⁾	9 550 (-36.2)	600 (-53.2)	10 150 (-37.5)
中國客運碼頭 China Ferry Terminal	2 007 (-47.6)	1 737 (-41.7)	3 744 (-45.0)
屯門客運碼頭 Tuen Mun Ferry Terminal	517 (-28.8)	1 (-86.6)	518 (-29.2)
海天客運碼頭 ⁽³⁾ SkyPier ⁽³⁾	442 (-41.3)	1 749 (-5.1)	2 191 (-15.6)
總計 Total	12 517 (-38.3)	4 086 (-33.1)	16 603 (-37.1)

註釋： (1) 數字與入境事務處發布的統計數字並不相等，原因是入境事務處的數字包括無須付船費的乘客(例如不足一歲者)。

Notes: Figures do not tally with those released by the Immigration Department because figures of the Immigration Department cover passengers who are not required to pay fares (e.g. passengers less than one year of age).

(2) 數字包括乘搭直升機來往澳門及中國內地的乘客人次。

Figures include helicopter passenger journeys to and from Macao and Mainland China.

(3) 數字包括無須付船費的乘客(例如不足一歲者)。

Figures include passengers who are not required to pay fares (e.g. passengers less than one year of age).

資料來源： 海事處客運碼頭組及香港國際機場客運碼頭服務有限公司

Data Sources: Ferry Terminals Section, Marine Department and Hong Kong International Airport Ferry Terminal Services Ltd.

表 15
TABLE 15

2019 年按航線分析抵港及離港乘客人次
Passenger Arrivals and Departures by Route, 2019

A. 海事處轄下客運碼頭⁽¹⁾
Marine Ferry Terminals⁽¹⁾

來往 ⁽²⁾ From/To ⁽²⁾	運輸工具類別 Type of Carrier	抵港 Arrivals		離港 Departures	
		乘客人次 (千) Passenger Journeys ('000)	載客率 Passenger Load Factor	乘客人次 (千) Passenger Journeys ('000)	載客率 Passenger Load Factor
		(%)	(%)	(%)	(%)
澳門 Macao	雙體船 Catamaran	4 689 (-32.0)	40.0% (-16.1)	4 883 (-45.5)	40.0% (-33.2)
	噴射飛翼船 Jetfoil	1 305 (-27.8)	55.6% (-8.2)	1 173 (-35.2)	50.0% (-17.0)
	直升機 Helicopter	12 (-52.0)	20.7% (-36.3)	13 (-55.1)	22.5% (-40.4)
小計 – 澳門 Sub-total – Macao		6 005 (-31.2)	42.5% (-14.6)	6 069 (-43.8)	41.6% (-30.6)
高明 Gaoming	雙體船 Catamaran	25 (-51.3)	27.0% (-58.1)	25 (-48.4)	27.4% (-56.0)
廣州 Guangzhou	直升機 Helicopter	† (-)	66.7% (-)	0 (-)	- (-)
江門 Jiangmen	雙體船 Catamaran	21 (+91.8)	27.8% (-34.9)	23 (§)	29.7% (-32.8)
蓮花山 Lianhuashan	雙體船 Catamaran	75 (-58.8)	30.6% (-34.1)	66 (-59.7)	21.9% (-38.9)
南沙 Nansha	雙體船 Catamaran	29 (+46.0)	10.2% (-39.7)	42 (-4.8)	15.1% (-60.7)
蛇口 Shekou	雙體船 Catamaran	82 (-26.6)	12.0% (-21.4)	80 (-22.9)	11.7% (-17.4)
深圳 Shenzhen	直升機 Helicopter	† (-)	58.3% (-)	† (-)	16.7% (-)
順德 Shunde	雙體船 Catamaran	136 (-51.4)	30.2% (-36.9)	130 (-51.9)	29.0% (-36.8)
中山 Zhongshan	雙體船 Catamaran	367 (-23.9)	46.7% (-23.8)	381 (-23.8)	44.7% (-22.4)
珠海 Zhuhai	雙體船 Catamaran	420 (-57.4)	27.3% (-55.3)	436 (-56.2)	28.0% (-52.2)
小計 – 內河港口 Sub-total – River Trade Ports		1 154 (-45.7)	27.8% (-43.2)	1 183 (-44.7)	27.6% (-41.1)
海事處轄下客運碼頭 Marine Ferry Terminals		7 159 (-34.0)	39.2% (-21.1)	7 253 (-43.9)	38.4% (-32.9)

表 15 - 續
TABLE 15 - Cont'd

B. 海天客運碼頭
SkyPier

來往 ⁽²⁾ From/To ⁽²⁾	運輸工具類別 Type of Carrier	抵港 Arrivals		離港 Departures	
		乘客人次 (千) Passenger Journeys ('000)	載客率 Passenger Load Factor	乘客人次 (千) Passenger Journeys ('000)	載客率 Passenger Load Factor
		(%)	(%)	(%)	(%)
澳門 Macao	雙體船 Catamaran	288 (-36.1)	25.2% (-16.8)	154 (-49.0)	22.3% (-1.3)
小計 – 澳門 Sub-total – Macao		288 (-36.1)	25.2% (-16.8)	154 (-49.0)	22.3% (-1.3)
虎門 Humen	雙體船 Catamaran	132 (-14.9)	36.3% (-0.4)	81 (-1.2)	22.6% (+15.8)
蓮花山 ⁽³⁾ Lianhuashan ⁽³⁾	雙體船 Catamaran	73 (-10.3)	21.8% (-3.0)	42 (+6.8)	13.5% (+11.4)
蛇口 Shekou	雙體船 Catamaran	608 (+0.3)	43.0% (-5.2)	338 (+28.9)	24.2% (+21.8)
深圳 Shenzhen	雙體船 Catamaran	113 (-12.9)	22.2% (-16.2)	56 (+17.6)	11.0% (+12.1)
中山 Zhongshan	雙體船 Catamaran	125 (-18.5)	24.6% (-9.0)	88 (-20.3)	21.3% (-10.6)
珠海 Zhuhai	雙體船 Catamaran	55 (-40.7)	18.9% (-27.3)	38 (-54.3)	13.0% (-44.2)
小計 – 內河港口 Sub-total – River Trade Ports		1 105 (-9.3)	32.3% (-6.1)	643 (+2.9)	19.6% (+5.8)
海天客運碼頭 SkyPier		1 393 (-16.5)	30.5% (-8.0)	798 (-14.0)	20.1% (+1.9)

註釋： (1) 指海事處轄下的客運碼頭(即港澳碼頭、中國客運碼頭及屯門客運碼頭)。

Notes: It refers to Marine Ferry Terminals (i.e. Macau Ferry Terminal, China Ferry Terminal and Tuen Mun Ferry Terminal) under the Marine Department.

(2) 指抵港航程的起點站或離港航程的終點站。乘客人次包括在航程中其他站上落的乘客人次。年內沒有來往斗門的航次。

It refers to the origin of arrival trip or the destination of departure trip. Figures on passenger journeys include those boarding or alighting at other stop(s) of the trip. There was no vessel trip from/to Doumen during the year.

(3) 包括海天客運碼頭經南沙來往蓮花山的航次及以南沙為起點站或終點站的航次。

Including trips between SkyPier from/to Lianhuashan via Nansha as well as arrival and departure trips from/to Nansha as origin/destination.

資料來源： (A) 海事處客運碼頭組
Data Sources: Ferry Terminals Section, Marine Department

(B) 香港國際機場客運碼頭服務有限公司
Hong Kong International Airport Ferry Terminal Services Ltd.

表16
TABLE 16
2019 年按主要貨物裝卸地點分析港口貨櫃吞吐量
Port Container Throughput by Main Cargo Handling Location, 2019

千個標準貨櫃單位
'000 TEUs

類別 Category		葵青貨櫃碼頭 Kwai Tsing Container Terminals			葵青貨櫃碼頭以外 Other than Kwai Tsing Container Terminals			總計 Total
		海運 Seaborne	河運 River	小計 Sub-total	海運 Seaborne	河運 River	小計 Sub-total	
裝上	Loaded	(%)	(%)	(%)	(%)	(%)	(%)	(%)
載貨貨櫃	Laden Container	4 792 (-9.0)	1 252 (-11.8)	6 045 (-9.6)	374 (-8.5)	1 077 (+10.6)	1 451 (+4.9)	7 495 (-7.1)
空貨櫃	Empty Container	550 (-10.0)	152 (-11.3)	702 (-10.3)	89 (+46.1)	488 (-9.3)	578 (-3.6)	1 280 (-7.4)
小計	Sub-total	5 342 (-9.1)	1 405 (-11.7)	6 747 (-9.7)	463 (-1.4)	1 565 (+3.5)	2 028 (+2.3)	8 775 (-7.2)
卸下	Discharged							
載貨貨櫃	Laden Container	5 324 (-5.5)	1 069 (-8.5)	6 393 (-6.0)	495 (-13.0)	1 272 (+0.9)	1 766 (-3.4)	8 159 (-5.4)
空貨櫃	Empty Container	1 058 (-10.0)	22 (-18.1)	1 080 (-10.2)	69 (+74.1)	220 (-19.6)	289 (-7.8)	1 369 (-9.7)
小計	Sub-total	6 382 (-6.2)	1 091 (-8.8)	7 473 (-6.6)	563 (-7.4)	1 492 (-2.7)	2 055 (-4.0)	9 528 (-6.1)
合計	Overall							
載貨貨櫃	Laden Container	10 116 (-7.2)	2 322 (-10.3)	12 437 (-7.8)	868 (-11.1)	2 348 (+5.1)	3 217 (+0.2)	15 654 (-6.3)
空貨櫃	Empty Container	1 608 (-10.0)	174 (-12.2)	1 782 (-10.2)	158 (+57.1)	708 (-12.7)	866 (-5.1)	2 648 (-8.6)
總計	Total	11 724 (-7.6)	2 495 (-10.5)	14 220 (-8.1)	1 026 (-4.8)	3 057 (+0.4)	4 083 (-1.0)	18 303 (-6.6)

資料來源：政府統計處外發加工貿易及船務統計組

Data Source: Outward Processing and Shipping Statistics Section, Census and Statistics Department

表 17
TABLE 17
2019 年按貨物種類及運輸方式劃分的裝卸港口貨物
Port Cargo Discharged/Loaded by Cargo Type and Mode of Transport, 2019

千公噸
'000 Tonnes

貨物種類 Cargo Type	海運 Seaborne			河運 River			總計 Total
	卸下 Discharged	裝上 Loaded	小計 Sub-total	卸下 Discharged	裝上 Loaded	小計 Sub-total	
	(%)	(%)	(%)	(%)	(%)	(%)	(%)
包裝散貨 Break bulk cargo	4 619 (-13.6)	173 (-45.8)	4 793 (-15.5)	1 212 (-32.6)	1 365 (-16.7)	2 577 (-25.0)	7 370 (-19.1)
貨櫃貨物 Containerised cargo	66 082 (-4.9)	49 244 (-8.2)	115 325 (-6.3)	20 780 (-8.3)	28 840 (-2.5)	49 619 (-5.0)	164 945 (-5.9)
無包裝液態散貨 Unpacked liquid bulk cargo	18 836 (-5.5)	262 (+11.0)	19 098 (-5.3)	2 236 (+97.4)	223 (+43.3)	2 459 (+90.9)	21 557 (+0.4)
無包裝固態散貨 Unpacked solid bulk cargo	21 615 (+43.2)	493 (-1.0)	22 108 (+41.8)	35 554 (+47.9)	11 782 (-9.2)	47 336 (+27.9)	69 444 (+32.0)
總計 Total	111 152 (+1.2)	50 172 (-8.2)	161 324 (-2.0)	59 781 (+20.5)	42 210 (-4.8)	101 992 (+8.5)	263 315 (+1.8)

資料來源：政府統計處外發加工貿易及船務統計組
Data Source: Outward Processing and Shipping Statistics Section, Census and Statistics Department

表 18
TABLE 18
政府繫泊浮泡統計數字
Government Mooring Buoys Statistics

A. 數目 (年底數字) Number (Figures as at end of the year)	2018	2019
"A 級" 政府繫泊浮泡數目 No. of "A Class" Government Mooring Buoys	10	11
"B 級" 政府繫泊浮泡數目 No. of "B Class" Government Mooring Buoys	4	4

B. 使用情況 Usage	2018	2019
"A 級" 政府繫泊浮泡訂用日數 Days booked for "A Class" Government Mooring Buoys	787	677
"B 級" 政府繫泊浮泡訂用日數 Days booked for "B Class" Government Mooring Buoys	68	43
"A 級" 政府繫泊浮泡訂用百分率 Percentage of "A Class" Government Mooring Buoys used based on booking	21.7%	16.9%
"B 級" 政府繫泊浮泡訂用百分率 Percentage of "B Class" Government Mooring Buoys used based on booking	4.7%	3.0%
上述數字只顯示訂用情況，實際使用率則如下： Whilst the above figures are indicative of booking usage, the actual physical occupancy rates are as follows:		
"A 級" 政府繫泊浮泡 "A Class" Government Mooring Buoys	21.2%	16.4%
"B 級" 政府繫泊浮泡 "B Class" Government Mooring Buoys	3.6%	2.0%

表 18 – 續
TABLE 18 – Cont'd

C. 浮泡及側面標記保養 Maintenance of Buoys and Lateral Marks		2018	2019
按期保養的燈浮標	Light Buoys maintained	127	128
按期保養的養魚區浮泡	Mariculture Buoys maintained	178	178
按期保養的側面標記	Lateral Marks maintained	33	33
按期保養的小型繫泊浮泡	Minor Mooring Buoys maintained	130	127
按期保養的大型繫泊浮泡	Major Mooring Buoys maintained	40	40
按期保養的 "A 級" 政府繫泊浮泡	"A Class" Government Mooring Buoys maintained	10	11
按期保養的 "B 級" 政府繫泊浮泡	"B Class" Government Mooring Buoys maintained	4	4

資料來源： (A) & (B) 海事處船隻航行監察中心
Sources: Vessel Traffic Centre, Marine Department

(C) 海事處港口後勤組
Port Logistics Section, Marine Department

表 19
TABLE 19

按分布地點分析香港私人繫泊設備數目 (截至 2019 年年底)
Number of Private Moorings Laid in Hong Kong by Location (as at end 2019)

地點	Location	私人繫泊設備 數目 Number of Private Moorings
香港仔南避風塘及銅鑼灣避風塘	Aberdeen South Typhoon Shelter and Causeway Bay Typhoon Shelter	
香港仔南避風塘 (白沙灣)	Aberdeen South Typhoon Shelter (Pak Sha Wan)	1
香港仔南避風塘 (布廠灣)	Aberdeen South Typhoon Shelter (Po Chong Wan)	449
銅鑼灣避風塘	Causeway Bay Typhoon Shelter	186
小計	Sub-total	636
其他避風塘及 維多利亞港口界限以內的其他地方	Other Typhoon Shelters and Elsewhere within the Limits of Victoria Port	
長洲避風塘	Cheung Chau Typhoon Shelter	9
喜靈州避風塘	Hei Ling Chau Typhoon Shelter	18
荔枝角	Lai Chi Kok	3
新油麻地避風塘	New Yau Ma Tei Typhoon Shelter	16
新油麻地避風塘 (防波堤外)	New Yau Ma Tei Typhoon Shelter (Outside Breakwater)	28
油麻地錨地以北	North of Yau Ma Tei Anchorage	1
藍巴勒海峽避風塘 (防波堤外)	Rambler Channel Typhoon Shelter (Outside Breakwater)	6
三家村避風塘	Sam Ka Tsuen Typhoon Shelter	1
汀九	Ting Kau	63
土瓜灣	To Kwa Wan	4
青衣北	Tsing Yi North	4
荃灣	Tsuen Wan	90
屯門避風塘	Tuen Mun Typhoon Shelter	7
小計	Sub-total	250

表 19 – 續
TABLE 19 – Cont'd

地點	Location	私人繫泊設備 數目 Number of Private Moorings
在香港水域內的其他地方	Elsewhere in the Waters of Hong Kong	
香港仔西避風塘 (防波堤外)	Aberdeen West Typhoon Shelter (Outside Breakwater)	14
赤徑口 (大灘海峽)	Chek Keng Hau (Long Harbour)	0
長沙欄	Cheung Sha Lan	33
愉景灣	Discovery Bay	6
下尾灣 (南丫島發電廠)	Ha Mei Wan (Lamma Island Power Station)	3
白沙灣	Hebe Haven	670
涠洲洲	Kau Sai Chau	4
高塘口 (大灘海峽)	Ko Tong Hau (Long Harbour)	1
鹿洲灣	Luk Chau Wan	1
龍鼓灘	Lung Kwu Tan	1
熨波洲	Middle Island	100
稔樹灣	Nim Shue Wan	13
北大嶼山	North Lantau Island	1
船灣海	Shuen Wan Hoi	37
赤柱正灘	Stanley Main Beach	4
大欖	Tai Lam	0
大美督	Tai Mei Tuk	32
大網仔	Tai Mong Tsai	7
大網仔 (阿公灣)	Tai Mong Tsai (A Kung Wan)	2
大潭港	Tai Tam Harbour	49
斬竹灣	Tsam Chuk Wan	10
青衣西	Tsing Yi West	2
早禾坑	Tso Wo Hang	18
屯門避風塘 (防波堤外)	Tuen Mun Typhoon Shelter (Outside Breakwater)	6
往灣 (黃竹角海)	Wong Wan (Wong Chuk Kok Hoi)	1
榕樹灣	Yung Shue Wan	2
小計	Sub-total	1 017
總計	Total	1 903

資料來源： 海事處私用繫泊分組
Data Source: Private Mooring Sub-unit, Marine Department

表 20
TABLE 20
碇泊處一覽 (截至 2019 年年底)
List of Anchorages (as at end 2019)

碇泊處 Anchorages		面積 (公頃) Area (hectares)
A. 檢疫及入境船隻碇泊處 Quarantine and Immigration Anchorages		
1. 東面檢疫及入境船隻碇泊處	Eastern Quarantine and Immigration Anchorage	35.1
2. 屯門入境船隻碇泊處	Tuen Mun Immigration Anchorage	89.9
3. 西面檢疫及入境船隻碇泊處	Western Quarantine and Immigration Anchorage	121.1
小計	Sub-total	246.1
B. 危險品碇泊處 Dangerous Goods Anchorages		
1. 將軍澳危險品碇泊處	Junk Bay Dangerous Goods Anchorage	28.9
2. 交椅洲危險品碇泊處	Kau Yi Chau Dangerous Goods Anchorage	288.2
3. 大鵬灣危險品碇泊處	Mirs Bay Dangerous Goods Anchorage	316.5
4. 糧船灣海危險品碇泊處	Rocky Harbour Dangerous Goods Anchorage	26.9
5. 南丫島南危險品碇泊處	South Lamma Dangerous Goods Anchorage	228.5
6. 荃灣危險品碇泊處	Tsuen Wan Dangerous Goods Anchorage	61.9
7. 西面危險品碇泊處	Western Dangerous Goods Anchorage	145.6
8. 危險品留用碇泊處	Reserved Dangerous Goods Anchorage	37.3
小計	Sub-total	1 133.8
C. 維修碇泊處 Servicing Anchorages		
1. 奇力 1 號碇泊處	Kellett Anchorage No.1	77.1
2. 奇力 2 號碇泊處	Kellett Anchorage No.2	258.5
3. 奇力 3 號碇泊處	Kellett Anchorage No.3	116.2
4. 馬灣碇泊處	Ma Wan Anchorage	138.4
5. 南丫島北碇泊處	North Lamma Anchorage	375.1
6. 南丫島西北碇泊處	North-west Lamma Anchorage	553.9
7. 半山石碇泊處	Pun Shan Shek Anchorage	352.1
8. 深水角 1 號碇泊處	Sham Shui Kok Anchorage No.1	72.6
9. 深水角 2 號碇泊處	Sham Shui Kok Anchorage No.2	35.6
10. 西面 1 號碇泊處	Western Anchorage No.1	310.6
11. 西面 2 號碇泊處	Western Anchorage No.2	278.7
12. 西面 3 號碇泊處	Western Anchorage No.3	272.4
13. 油麻地碇泊處	Yau Ma Tei Anchorage	105.0
小計	Sub-total	2 946.2

表 20 – 續
TABLE 20 – Cont'd

碇泊處 Anchorages		面積 (公頃) Area (hectares)
D. 領航特別碇泊處 Pilotage Special Anchorages		
1. 南丫島東南碇泊處	South-east Lamma Anchorage	285.5
2. 南丫島西南碇泊處	South-west Lamma Anchorage	228.4
3. 龍鼓水道碇泊處	Urmston Road Anchorage	190.0
小計	Sub-total	703.9
E. 避風碇泊處 Sheltered Anchorages		
1. 柴灣貨物裝卸灣	Chai Wan Cargo Basin	11.2
2. 長沙欄	Cheung Sha Lan	6.7
3. 吉澳	Kat O	1.6
4. 熨波洲	Middle Island	6.9
5. 稔樹灣	Nim Shue Wan	2.3
6. 白沙灣	Pak Sha Wan (Hebe Haven)	84.0
7. 西貢	Sai Kung	4.3
8. 沙頭角	Sha Tau Kok	0.6
9. 船灣海	Shuen Wan Hoi	26.0
10. 聖士提反灣	St. Stephen's Bay	1.3
11. 大美督	Tai Mei Tuk	12.3
12. 大澳	Tai O	4.0
13. 大潭港	Tai Tam Harbour	5.7
14. 汀九	Ting Kau	0.7
15. 斬竹灣	Tsam Chuk Wan	7.5
16. 荃灣	Tsuen Wan	3.7
小計	Sub-total	178.8
總計	Total	5 208.8

資料來源： 海事處策劃、發展協調及港口保安部

Data Source: Planning, Development & Port Security Branch, Marine Department

表 21
TABLE 21
避風塘一覽 (截至 2019 年年底)
List of Typhoon Shelters (as at end 2019)

避風塘	Typhoon Shelters	面積 (公頃) Area (hectares)
1. 香港仔南避風塘	Aberdeen South Typhoon Shelter	26.1
2. 香港仔西避風塘	Aberdeen West Typhoon Shelter	34.2
3. 銅鑼灣避風塘	Causeway Bay Typhoon Shelter	10.6
4. 長洲避風塘	Cheung Chau Typhoon Shelter	50.0
5. 喜靈洲避風塘	Hei Ling Chau Typhoon Shelter	76.6
6. 觀塘避風塘	Kwun Tong Typhoon Shelter	33.8
7. 新油麻地避風塘	New Yau Ma Tei Typhoon Shelter	64.6
8. 藍巴勒海峽避風塘	Rambler Channel Typhoon Shelter	12.9
9. 三家村避風塘	Sam Ka Tsuen Typhoon Shelter	1.9
10. 筲箕灣避風塘	Shau Kei Wan Typhoon Shelter	17.2
11. 船灣避風塘	Shuen Wan Typhoon Shelter	10.3
12. 土瓜灣避風塘	To Kwa Wan Typhoon Shelter	14.8
13. 屯門避風塘	Tuen Mun Typhoon Shelter	56.8
14. 鹽田仔避風塘	Yim Tin Tsai Typhoon Shelter	9.2
總計	Total	419.0

資料來源： 海事處策劃、發展協調及港口保安部

Data Source: Planning, Development & Port Security Branch, Marine Department

表 22
TABLE 22
公眾貨物裝卸區一覽 (截至 2019 年年底)
List of Public Cargo Working Areas (as at end 2019)

公眾貨物裝卸區	Public Cargo Working Area	面積 (公頃) Area (hectares)	符合發牌條件之 停泊位長度 (米) Licensable Seafrontage (metres)
1. 柴灣公眾貨物裝卸區	Chai Wan Public Cargo Working Area	2.1	548
2. 新油麻地公眾貨物裝卸區	New Yau Ma Tei Public Cargo Working Area	6.8	1 212
3. 藍巴勒海峽公眾貨物裝卸區	Rambler Channel Public Cargo Working Area	4.1	1 036
4. 昂船洲公眾貨物裝卸區	Stonecutters Island Public Cargo Working Area	2.9	560
5. 屯門公眾貨物裝卸區	Tuen Mun Public Cargo Working Area	3.3	616
6. 西區公眾貨物裝卸區	Western District Public Cargo Working Area	3.3	880
總計	Total	22.5	4 852

資料來源： 海事處貨物裝卸組

Data Source: Cargo Handling Section, Marine Department

表 23
TABLE 23

垃圾收集、油污和檢控個案統計數字
Refuse Collection, Oil Pollution and Prosecution Statistics

A. 垃圾收集和油污事故
Refuse Collection and Oil Pollution Incident

		2018	2019
1. 從海港收集的垃圾 (公噸)	Refuse collected from harbour (tonnes)	11 534	11 006
2. 從船舶收集的垃圾 (公噸)	Refuse collected from vessels (tonnes)	4 550	4 572
3. 接報的疑似油污事故 (宗)	Alleged oil pollution incidents reported (cases)	136	126

B. 檢控統計數字
Prosecution Statistics

罪行 Offence	陳詞／聆訊個案 No. of Cases Heard		定罪個案 No. of Cases Convicted		罰款 Fine (HK\$)	
	2018	2019	2018	2019	2018	2019
1. 違反碰撞規例 Breach of collision regulations	25	14	23	14	66,500	49,850
2. 違反牌照／准許證條件 Breach of licence/permit conditions	71	70	71	69	88,100	73,200
3. 未獲允許運載乘客／超額運載乘客 Carrying passengers without permission/excessive passengers	19	27	17	27	16,700	36,200
4. 不遵從指示 Failing to comply with direction	27	44	27	41	170,600	319,400
5. 沒有採取合理措施以確保受僱人在工程進行時戴著適當的安全頭盔 Failing to ensure the person employed to wear an appropriate safety helmet	46	41	45	41	79,400	77,700
6. 未獲允許讓該船隻緊靠著另一船舶而停放 Lying alongside another vessel without permission	28	26	28	26	25,250	28,200
7. 靠泊於已展示禁止船隻靠泊告示的岸壁／登岸梯級 Lying alongside seawall/landing steps prohibited by notice	4	40	4	40	3,600	21,150
8. 船上沒有合格船長／輪機員 No qualified master/engineer on board	115	106	115	104	121,050	120,850
9. 在沒有有效驗船證明書的情況下操作 Operating a vessel without valid certificate of survey	22	14	22	14	26,400	22,200
10. 沒持有效證明書的人進行貨物處理 Person carrying out cargo handling without certificates	42	35	41	35	95,900	66,900
11. 超速行駛 Steaming in excessive speed	26	31	26	31	48,360	39,700
12. 使用沒有第三者風險保險的船隻 Using a vessel not insured against third party risk	13	13	13	13	26,500	18,300
13. 船隻未有領牌／並無有效牌照 Vessel was not licensed/did not have a valid licence	155	134	153	130	749,750	631,250
14. 其他海事罪行 Other marine offences	323	281	313	277	772,700	512,950
總計 Total	916	876	898	862	2,290,810	2,017,850

資料來源： (A) 海事處港口後勤組
Data Sources: Port Logistics Section, Marine Department
(B) 海事處檢控小組
Prosecution Unit, Marine Department

表 24
TABLE 24

按噸位等級分析香港領牌船隻 (截至 2019 年年底)
Hong Kong Licensed Vessels by Tonnage Classification (as at end 2019)

船隻類型	Vessel Type	<=60 淨噸位 <=60 NT	>60 – 300 淨噸位 >60 - 300 NT	>300 淨噸位 >300 NT	總計 ⁽²⁾⁽³⁾ Total ⁽²⁾⁽³⁾
第 I 類	Class I				
(a) 渡輪船隻	Ferry Vessel	9	29	8	46
(b) 水上食肆	Floating Restaurant	0	0	2	2
(c) 小輪	Launch	203	52	0	255
(d) 多用途船隻	Multi-purposes Vessel	10	6	0	16
(e) 原始船隻	Primitive Vessel	61	1	0	62
(f) 固定船隻	Stationary Vessel	0	0	0	0
小計	Sub-total	283	88	10	381
第 II 類	Class II				
(a) 起重機躉船	Crane Barge	0	3	6	9
(b) 危險品運輸船	Dangerous Goods Carrier	1	11	15	27
(c) 挖泥船	Dredger	0	14	0	14
(d) 乾貨貨船	Dry Cargo Vessel	38	51	22	111
(e) 非自航駁船	Dumb Lighter	9	53	467	529
(f) 食油運輸船	Edible Oil Carrier	0	0	11	11
(g) 平面工作躉	Flat-top Work Barge	22	23	21	66
(h) 浮塢	Floating Dock	0	0	3	3
(i) 水上工場	Floating Workshop	0	1	0	1
(j) 開底躉船	Hopper Barge	0	3	29	32
(k) 登岸平台	Landing Platform	42	0	1	43
(l) 登岸浮躉	Landing Pontoon	26	30	13	69
(m) 有毒液體物質 運輸船	Noxious Liquid Substance Carrier	0	0	0	0
(n) 石油運輸船	Oil Carrier	16	100	51	167
(o) 領港船	Pilot Boat	22	0	0	22
(p) 特別用途船隻	Special Purpose Vessel	23	14	41	78
(q) 固定船隻	Stationary Vessel	94	22	5	121
(r) 交通船	Transportation Boat	25	0	0	25
(s) 交通舢舨	Transportation Sampan	60	0	0	60
(t) 拖船	Tug	85	108	0	193
(u) 供水船	Water Boat	11	7	0	18
(v) 工作船	Work Boat	286	8	4	298
小計	Sub-total	760	448	689	1 897

表 24 – 續
TABLE 24 – Cont'd

船隻類型	Vessel Type	<=60 淨噸位 <=60 NT	>60 – 300 淨噸位 >60 - 300 NT	>300 淨噸位 >300 NT	總計 ⁽²⁾⁽³⁾ Total ⁽²⁾⁽³⁾
第 III 類	Class III				
(a) 運魚船	Fish Carrier	16	13	0	29
(b) 漁船舢舨	Fishing Sampan	1 892	0	0	1 892
(c) 漁船	Fishing Vessel	584	1 290	0	1 874
(d) 舷外機開敞式舢舨	Outboard Open Sampan	2 599	0	0	2 599
小計	Sub-total	5 091	1 303	0	6 394
第 IV 類	Class IV				
(a) 機械輔助帆船	Auxiliary Powered Yacht	N.A.	N.A.	N.A.	756
(b) 遊樂船	Cruiser	N.A.	N.A.	N.A.	2 711
(c) 開敞式遊樂船	Open Cruiser	N.A.	N.A.	N.A.	6 829
小計	Sub-total	N.A.	N.A.	N.A.	10 296
總計	Total	6 134⁽¹⁾	1 839⁽¹⁾	699⁽¹⁾	18 968

註釋： (1) 不包括第 IV 類領牌船隻的數字。

Notes: Not including Class IV licensed vessels.

(2) 包括 69 艘閑置船隻。

Figure includes 69 laid-up vessels.

(3) 不包括根據《商船(本地船隻)(住家船隻)規例》(第 548A 章) 領牌的 4 艘住家船隻。

Figure excludes 4 dwelling vessels which are licensed under the Merchant Shipping (Local Vessels) (Dwelling Vessels) Regulation (Cap. 548A).

資料來源： 海事處牌照及關務組

Data Source: Licensing and Port Formalities Section, Marine Department

表 25
TABLE 25

船舶安全監督統計數字
Ship Safety Statistics

A. 貨船安全統計數字 Cargo Ships Safety Statistics	2018	2019
香港註冊貨船品質審查／檢驗 Hong Kong Registered Cargo Ships Quality Checked/Inspected <ol style="list-style-type: none"> 品質審查的註冊貨船數目 No. of quality checks on Hong Kong registered cargo ships 品質檢驗和稽核貨船數目 No. of flag state quality control ship inspections and company visits 審核船體、機械和設備圖則數目 No. of plans examined in respect of hull, machinery and equipment 	2 411 124 253	2 387 122 129
貨船設備安全證明書 Cargo Ship Safety Equipment Certificate (SEC) <ol style="list-style-type: none"> 所簽發的豁免證明書數目 No. of exemption certificates issued 應其他國家機關要求而檢驗的外來船舶，以簽發設備安全證明書 Foreign ships surveyed at the request of other national authorities for the issue of SEC 	834 0	808 0
貨船無線電安全證明書 Cargo Ship Safety Radio Certificate (SRC) <ol style="list-style-type: none"> 所簽發的豁免證明書數目 No. of exemption certificates issued 應其他國家機關要求而檢驗的外來船舶，以簽發無線電安全證明書 Foreign ships surveyed at the request of other national authorities for the issue of SRC 	292 0	232 0
其他 Others <ol style="list-style-type: none"> 所簽發的《海員培訓、發證和值班標準國際公約》最低安全配員證明書 Standards of Training, Certification and Watchkeeping Minimum Safe Manning Certificate issued 對構造安全、設備安全、無線電安全證明書的監察，包括中期檢驗 Safety Construction, Equipment and Radio Certificates monitored (including intermediate surveys) 對國際載重線證明書的監察，包括定期檢驗 International Load Line Certificate monitored (including periodic surveys) 對國際防止油污證明書、油污損害民事責任保險證明書或其他保證證明書及燃油污染損害民事責任保險證明書或其他經濟擔保證明書的監察 – 續期、年度／中期檢驗 International Oil Pollution Prevention (IOPP) Certificate, Certificate of Insurance or Other Financial Security in Respect of Civil Liability for Oil Pollution Damage and Certificate of Insurance or Other Financial Security in Respect of Civil Liability for Bunker Oil Pollution Damage monitored (including renewal, annual/intermediate surveys) 對新船公司所作的國際安全管理稽核 International Safety Management (ISM) audits of new shipping companies 其他檢驗 (例如合格證明書等) Other surveys (e.g. Certificates of Fitness etc.) 	451 1 983 661 4 250 15 0	710 1 734 578 3 870 10 0

表 25 – 續
TABLE 25 – Cont'd

B. 客船安全統計數字 Passenger Ships Safety Statistics	2018	2019
乘客定額及船舶安全證明書 Passenger and Ship Safety Certificates <ol style="list-style-type: none"> 1. 客船安全證明書 – 國際航線 Passenger Ship Safety Certificate (PSSC) – International Voyage 2. 客船安全證明書 – 短途國際航線 Passenger Ship Safety Certificate (PSSC) – Short International Voyage 3. 高速船安全證明書 – 內河航限 High Speed Craft Safety Certificate (HSCSC) – River Trade Limits 4. 延長客船安全證明書有效期 Extensions to PSSC 5. 高速船安全證明書檢驗船舶總數 Total no. of vessels surveyed for HSCSC 6. 受檢驗的客船無線電裝置 Passenger ship radio installations surveyed 7. 所簽發的載重線證明書數目 No. of Load Line Certificates issued 8. 所簽發的載重線豁免證明書數目 No. of Load Line Exemption Certificates issued 9. 所簽發的國際防止油污證明書及增補數目 No. of IOPP Certificates with Supplement issued 10. 所簽發的國際防止油污豁免證明書數目 No. of IOPP Exemption Certificates issued 11. 所簽發的最低安全配員證明書數目 No. of Minimum Safe Manning Certificates issued 12. 對船公司所作的國際安全管理稽核 ISM audits of shipping companies 13. 對船舶所作的國際安全管理稽核 ISM audits of ships 14. 所簽發的國際安全管理稽核符合證明數目 No. of ISM Document of Compliance issued 15. 所簽發的國際安全管理稽核安全管理證明書數目 No. of ISM Safety Management Certificates issued 16. 所簽發的臨時國際安全管理稽核安全管理證明書數目 No. of Interim ISM Safety Management Certificates issued 		
雜項檢查，圖則審核和設備 Miscellaneous Inspection, Plans Approval and Equipment <ol style="list-style-type: none"> 1. 審核客船船體、機械和設備圖則數目 No. of plans examined for hull, machinery and equipment of passenger ships 2. 簽發檢查證明書、雜項檢驗／檢查數目 No. of certificates of inspection issued, miscellaneous surveys/inspections 		

表 25 – 續
TABLE 25 – Cont'd

C. 港口國監督統計數字 Port State Control Statistics	2018	2019
在香港特別行政區港口內進行的港口國監督檢查⁽¹⁾： Port State Control Inspections⁽¹⁾ in the Harbour of the Hong Kong Special Administrative Region:		
1. 在履行身為港口國監督委員而對《東京諒解備忘錄》應有的責任下，受港口國監督檢查的個別外來船舶數目 (遠洋船舶) No. of individual foreign ships inspected under the obligation to Tokyo Memorandum of Understanding (MOU), as a member Port State of the Committee (Ocean ships)	708	705
2. 受港口國監督檢查的個別內地註冊／領牌船舶數目 (沿岸船舶) No. of individual Mainland registered/licensed ships inspected (Coastal ships)	57	54
3. 對遠洋及沿岸船舶進行港口國監督檢查 (包括複檢) 總次數 Total no. of Port State Control inspections (including re-inspections) carried out on ocean and coastal ships	807	795
4. 因低於安全標準而被扣留在港的遠洋及沿岸船舶總次數 Total no. of detentions of sub-standard ocean and coastal ships in Hong Kong	27	31

註釋：(1) 就港口國監督檢查方面而言，遠洋船舶是指懸掛中國（不包括香港註冊）或外國旗的公約船舶和懸掛外國旗的非公約船舶，而沿岸船舶是指中國內地註冊／領牌的非公約船舶。

Note: For Port State Control inspection, ocean ships refer to those convention ships hoisting flags of China (excluding Hong Kong registered) or foreign countries, and non-convention ships registered with foreign countries. Coastal ships are those non-convention ships registered with/licensed by the Mainland of China.

資料來源： (A) 海事處貨船安全組
Data Sources: Cargo Ships Safety Section, Marine Department

(B) 海事處客船安全組
Passenger Ships Safety Section, Marine Department

(C) 海事處港口國監督組
Port State Control Section, Marine Department

表 26
TABLE 26

本地船隻安全／海事工業安全／海事意外統計數字
Local Vessels Safety/Marine Industrial Safety/Marine Accidents Statistics

A. 船舶的檢驗和檢查統計 Statistics on Surveys and Inspections of Vessels	2018	2019 [#]
I. 給本地船隻簽發／批註的證明書／適合聲明／紀錄等 Certificates/Declarations/Records etc. Issued/Endorsed to Local Vessels <ol style="list-style-type: none"> 1. 簽發／批註乾舷勘定證明書數目 No. of Freeboard Assignment Certificates issued/endorsed 2. 簽發安全設備檢驗紀錄數目 No. of Survey Records of Safety Equipment issued 3. 簽發／批註載重線證明書數目 No. of Load Line Certificates issued/endorsed 4. 簽發噸位丈量記錄數目 No. of Records of Tonnage Measurement issued 5. 簽發／批註散裝有毒液體物質的防污證明書數目 No. of Pollution Prevention Certificates for the Carriage of Noxious Liquid Substances in Bulk issued/endorsed 6. 簽發適合運載危險品聲明數目 No. of Declarations of Fitness for the Carriage of Dangerous Goods issued 7. 簽發香港防止油類污染證明書數目 No. of Hong Kong Oil Pollution Prevention Certificates issued 8. 簽發／批註香港防止空氣污染證明書數目 No. of Hong Kong Air Pollution Prevention Certificates issued/endorsed 9. 給本地船隻簽發驗船證明書數目 No. of Certificates of Survey issued to Local Vessels <ul style="list-style-type: none"> – 第 I 類 Class I – 第 II 類 Class II – 第 III 類 Class III – 第 IV 類 Class IV 		
總計 Total	2 729*	2 832
II. 審批圖則／文件 Plans/Documents Examined <ol style="list-style-type: none"> 1. 船隻傾斜測試及穩性確定數目 No. of Vessels Inclining tested and Stability Information assessed 2. 審核本地船隻的船體、機械和設備圖則數目 No. of Plans of Hull, Machinery and Equipment examined for Local Vessels 		
總計 Total	2 674*	2 156

表 26 – 續
TABLE 26 – Cont'd

A. 船舶的檢驗和檢查統計 (續) Statistics on Surveys and Inspections of Vessels (Cont'd)	2018	2019 [#]
III. 檢驗本地船隻數目 (包括新船、現有船隻、抽查船隻及被扣留的船隻) Local Vessels Inspected (New, Existing, Spot-check Vessels and Detained Vessels) <ol style="list-style-type: none"> 1. 執行其他政府部門要求檢查的船隻數目 No. of Inspections of Vessels for Other Government Departments 2. 為簽發證明書而接受檢驗的本地船隻數目 No. of local vessels inspected for issuing certificates <ul style="list-style-type: none"> 完成首次檢驗而新領牌的船隻數目 No. of Newly Licensed Vessels after Completing Initial Survey 在本港檢驗本地船隻的數目 No. of Local Vessels Inspected Locally 	 	
總計 Total	1 691	1 860
IV. 檢驗本地船隻次數 (包括新船、現有船隻、抽查船隻及被扣留的船隻) Inspection Visits Made to Local Vessels (New, Existing, Spot-check Vessels and Detained Vessels) <ol style="list-style-type: none"> 1. 檢驗碰撞後破損的本地船隻次數 No. of Inspection Surveys of Damaged Local Vessels after Collision 2. 抽查及複驗本地船隻次數 No. of Spot Checks and Audit Checks on Local Vessels 3. 海外檢驗本地船隻次數 No. of Overseas Visits for Inspection of Local Vessels 4. 本地船隻在本港首次及定期檢查次數 No. of Initial and Periodical Inspection Visits Made Locally to Local Vessels 	 	
總計 Total	2 958*	3 053
V. 舉辦安全講座及研討會 Talks and Seminars Conducted	0	0

表 26 – 續
TABLE 26 – Cont'd

B. 檢查正在進行工程的船舶及調查海上工業意外事故等 Inspections of Vessels Engaged in Works and Investigations of Marine Industrial Accidents etc.	2018	2019
I. 貨櫃檢查數目 No. of Containers Inspected	8 931	8 447
II. 海事工業安全檢查 (不包括貨櫃檢查) Marine Industrial Safety Inspections (not including inspection of containers) <ol style="list-style-type: none"> 1. 檢查正在修理的船舶 Inspections of Vessels Undergoing Repair 2. 檢查海事工程船舶 Inspections of Vessels Engaged in Marine Construction 3. 檢查遠洋船裝卸貨物工具 Cargo Gear Inspections on Ocean-going Vessels 4. 檢查遠洋船裝卸貨物 Stevedoring Inspections on Ocean-going Vessels 5. 檢查駁船裝卸貨物工具 Cargo Gear Inspections on Lighters 6. 檢查駁船裝卸貨物 Stevedoring Inspections on Lighters 		
總計 Total	4 913	4 714
III. 海事工業意外的調查及查詢數目 Marine Industrial Accidents Investigated/Inquired <ol style="list-style-type: none"> 1. 調查致命的非海事工業意外 Non-marine Industrial Fatal Accidents investigated 2. 調查致命的海事工業意外 Marine Industrial Fatal Accidents investigated 3. 調查嚴重意外 Serious Accidents investigated 4. 調查嚴重意外 (無傷亡) Serious Accidents (No Casualty) investigated 5. 查詢非嚴重意外 Non-serious Accidents inquired 		
總計 Total	78*	53

表 26 – 續
TABLE 26 – Cont'd

B. 檢查正在進行工程的船舶及調查海上工業意外事故等 (續) Inspections of Vessels Engaged in Works and Investigations of Marine Industrial Accidents etc. (Cont'd)	2018	2019
IV. 發生海事工業意外的數目 Marine Industrial Accidents Occurred <ol style="list-style-type: none"> 1. 修船意外總數 Total Ship Repair Accidents 2. 裝卸貨物意外總數 Total Cargo Handling Accidents 3. 海事工程意外總數 Total Marine Construction Accidents 		
總計 Total	86*	67
V. 簽發修船許可證／轉介檢控小組的個案／發出警告信的數目 Letters of Permission to Undertake Repairs Issued/Cases Referred to Prosecutions Unit/Warning Letters Issued <ol style="list-style-type: none"> 1. 簽發修船許可證 Letters of Permission to Undertake Repairs issued 2. 轉介檢控小組的個案 Cases referred to Prosecutions Unit 3. 發出警告信 Warning Letters issued 		
總計 Total	3 510	3 292
VI. 海事工業安全的宣傳及教育 Promotion and Education on Marine Industrial Safety <ol style="list-style-type: none"> 1. 發出安全指令 Safety Directions issued 2. 出版或修訂的安全小冊子／單張／海報／貼紙數目 No. of Safety Pamphlets/Leaflets/Posters/Stickers published or revised 3. 出版或修訂的安全指南／工作守則數目 No. of Safety Guides/Codes of Practice published or revised 4. 安全講座及研討會的舉辦數目 No. of Safety Talks and Seminars conducted 5. 到訪船舶推廣安全 Safety Promotion Visits to Vessels 		
總計 Total	1 883	1 666

表 26 – 續
TABLE 26 – Cont'd

C. 香港註冊船舶的損失數目⁽¹⁾ Loss of Vessels Registered in Hong Kong⁽¹⁾	2018	2019
損失船舶數目 Number Lost	0	1

D. 2019 年海上意外事故統計 Marine Accidents Statistics in 2019								
意外事故類別 Type of Accident	香港水域範圍以內 ⁽²⁾ Within Hong Kong Waters ⁽²⁾				香港水域範圍以外 ⁽³⁾ Outside Hong Kong Waters ⁽³⁾			
	宗數 No. of Cases	死亡人數 Persons Killed	受傷人數 Persons Injured	失蹤人數 Persons Missing	宗數 No. of Cases	死亡人數 Persons Killed	受傷人數 Persons Injured	失蹤人數 Persons Missing
相撞 Collision	124	1	5	0	48	2	5	23
接觸 Contact	66	0	13	0	24	0	0	0
沉沒／入水 Sinking/Foundering	35	0	3	0	2	0	0	0
火警／爆炸 Fire/Explosion	19	3	3	0	13	1	0	0
擱淺／觸礁 Grounding/Stranding	18	0	0	0	16	0	0	0
翻沉／傾斜 Capsized/Listing	12	2	3	0	1	0	0	8
其他 Others	47	0	1	0	34	0	1	0
總計 Total	321	6	28	0	138	3	6	31

表 26 – 續
TABLE 26 – Cont'd

E. 海上意外事故調查 Marine Accident Investigation	2018	2019
調查意外事故 《船舶及港口管制條例》、《商船 (本地船隻) 條例》及《商船條例》 Accidents Investigated Shipping and Port Control Ordinance, Merchant Shipping (Local Vessel) Ordinance and Merchant Shipping Ordinance	14	24
初步研訊 《商船條例》 Preliminary Inquiries Merchant Shipping Ordinance	0	0
領港研訊 《領港條例》 Pilotage Inquiries Pilotage Ordinance	0	0
海事法庭 Marine Courts	0	0
調查委員會 Board of Inquiry	0	0
對調查委員會裁決提出上訴 Appeal against the Decision of Board of Inquiry	0	0

註釋： (1) 指因遇險而導致損失的船舶。

Notes: Refers to loss of vessels due to casualty or accident.

(2) 包括所有船舶 (如香港註冊及外國註冊船舶、本地領牌船隻、內河船隻、沿海船隻、政府船舶等等) 的意外及傷亡數字。

Including accidents and casualties figures of all vessels (such as Hong Kong registered and foreign registered vessels, local licensed vessels, river trade vessels, coastal vessels, government launches, etc.).

(3) 只包括在香港註冊或領牌的船舶的意外及傷亡數字。

Including accidents and casualties figures of Hong Kong registered vessels or local licensed vessels only.

資料來源： (A) 海事處本地船舶安全組

Data Sources: Local Vessels Safety Section, Marine Department

(B) 海事處海事工業安全組

Marine Industrial Safety Section, Marine Department

(C) 海事處船舶註冊及商船海員管理處

Shipping Registry and Mercantile Marine Office, Marine Department

(D) & (E) 海事處海事意外調查組

Marine Accident Investigation Section, Marine Department

表 27
TABLE 27

海員發證、註冊和僱用統計數字
Seafarers' Certification, Registration and Employment Statistics

A. 遠洋合格證明書 Seagoing Certificates of Competency		2018		2019	
		申請人數 Number of Applications	及格人數 Number of Successes	申請人數 Number of Applications	及格人數 Number of Successes
1. 商船船長及 甲板高級船員	Master Mariner and Deck Officer				
一級甲板高級船員 (商船船長)	Deck Officer Class 1 (Master Mariner)				
筆試	Written Examination	27	3	15	3
口試	Oral Examination	6	2	20	4
其他 ⁽¹⁾	Other Services ⁽¹⁾	25	25	3	3
二級甲板高級船員	Deck Officer Class 2				
筆試	Written Examination	99	28	79	22
口試	Oral Examination	21	5	69	19
其他 ⁽¹⁾	Other Services ⁽¹⁾	15	15	4	4
三級甲板高級船員	Deck Officer Class 3				
筆試	Written Examination	65	16	32	7
口試	Oral Examination	72	22	67	20
訊號	Signal	24	7	36	14
其他 ⁽¹⁾	Other Services ⁽¹⁾	16	15	17	17
小計	Sub-total	370	138	342	113
2. 輪機師	Marine Engineer Officer				
一級輪機師	Marine Engineer Officer – Class 1				
筆試	Written Examination	39	16	34	16
口試	Oral Examination	15	5	8	2
其他 ⁽¹⁾	Other Services ⁽¹⁾	7	7	9	8
二級輪機師	Marine Engineer Officer – Class 2				
筆試	Written Examination	40	10	43	13
口試	Oral Examination	19	1	23	5
其他 ⁽¹⁾	Other Services ⁽¹⁾	10	10	6	6
三級輪機師	Marine Engineer Officer – Class 3				
口試	Oral Examination	24	13	2	1
其他 ⁽¹⁾	Other Services ⁽¹⁾	16	16	9	9
電子技術高級船員	Electro-Technical Officer				
口試	Oral Examination	0	0	0	0
其他 ⁽¹⁾	Other Services ⁽¹⁾	0	0	0	0
小計	Sub-total	170	78	134	60
總計	Total	540	216	476	173

表 27 – 續
TABLE 27 – Cont'd

B. 內河航行合格證明書 River Trade Certificates of Competency		2018		2019	
		申請人數 Number of Applications	及格人數 Number of Successes	申請人數 Number of Applications	及格人數 Number of Successes
1. 甲板高級船員	Deck Officer				
一級甲板高級船員	Deck Officer Class 1				
筆試	Written Examination	4	2	2	0
口試	Oral Examination	12	1	2	0
其他 ⁽¹⁾	Other Services ⁽¹⁾	0	0	2	2
二級甲板高級船員	Deck Officer Class 2				
筆試	Written Examination	49	15	70	19
口試	Oral Examination	16	1	15	3
其他 ⁽¹⁾	Other Services ⁽¹⁾	1	0	0	0
三級甲板高級船員	Deck Officer Class 3				
筆試	Written Examination	91	29	55	19
口試	Oral Examination	0	0	0	0
訊號	Signal	37	8	17	4
其他 ⁽¹⁾	Other Services ⁽¹⁾	7	6	0	0
小計	Sub-total	217	62	163	47
2. 輪機師	Marine Engineer Officer				
一級輪機師	Marine Engineer Officer – Class 1				
筆試	Written Examination	2	0	0	0
口試	Oral Examination	1	0	0	0
其他 ⁽¹⁾	Other Services ⁽¹⁾	0	0	0	0
二級輪機師	Marine Engineer Officer – Class 2				
筆試	Written Examination	37	11	25	8
口試	Oral Examination	24	4	11	5
其他 ⁽¹⁾	Other Services ⁽¹⁾	1	1	0	0
三級輪機師	Marine Engineer Officer – Class 3				
口試	Oral Examination	12	9	11	2
其他 ⁽¹⁾	Other Services ⁽¹⁾	0	0	0	0
小計	Sub-total	77	25	47	15
總計	Total	294	87	210	62

表 27 – 續
TABLE 27 – Cont'd

C.1 本地合格證明書 Local Certificates of Competency		2018		2019	
		申請人數 Number of Applications	及格人數 Number of Successes	申請人數 Number of Applications	及格人數 Number of Successes
1. 船長	Coxswain				
一級船長	Coxswain Grade 1				
筆試	Written Examination	60	16	106	41
其他 ⁽¹⁾	Other Services ⁽¹⁾	605	582	328	326
二級船長	Coxswain Grade 2				
筆試	Written Examination	238	91	273	111
口試	Oral Examination	186	24	237	37
其他 ⁽¹⁾	Other Services ⁽¹⁾	866	859	774	770
三級船長	Coxswain Grade 3				
筆試	Written Examination	502	147	680	212
口試	Oral Examination	2	0	0	0
其他 ⁽¹⁾	Other Services ⁽¹⁾	840	829	959	951
小計	Sub-total	3 299	2 548	3 357	2 448
2. 輪機操作員	Engine Operator				
一級輪機操作員	Engine Operator Grade 1				
其他 ⁽¹⁾	Other Services ⁽¹⁾	424	424	487	487
二級輪機操作員	Engine Operator Grade 2				
筆試	Written Examination	152	45	164	59
其他 ⁽¹⁾	Other Services ⁽¹⁾	28	28	15	15
三級輪機操作員	Engine Operator Grade 3				
筆試	Written Examination	495	150	659	179
其他 ⁽¹⁾	Other Services ⁽¹⁾	439	436	515	513
小計	Sub-total	1 538	1 083	1 840	1 253
總計	Total	4 837	3 631	5 197	3 701

表 27 – 續
TABLE 27 – Cont'd

C.2 遊樂船隻操作人合格證明書 Pleasure Vessel Operator Certificate of Competency		2018		2019	
		申請人數 Number of Applications	及格人數 Number of Successes	申請人數 Number of Applications	及格人數 Number of Successes
遊樂船隻 一級操作人	Pleasure Vessel Operator Grade 1				
筆試	Written Examination	288	118	201	62
口試	Oral Examination	224	46	308	78
其他 ⁽¹⁾	Other Services ⁽¹⁾	656	652	806	803
遊樂船隻 二級操作人	Pleasure Vessel Operator Grade 2				
筆試	Written Examination	8 788	3 547	10 658	4 074
口試	Oral Examination	0	0	0	0
其他 ⁽¹⁾	Other Services ⁽¹⁾	833	831	1 013	1 012
總計	Total	10 789	5 194	12 986	6 029

D. 部門考試 Departmental Examinations		2018		2019	
		考試人數 Examined	及格人數 Passed	考試人數 Examined	及格人數 Passed
一級本地船長	Coxswain Grade 1	0	0	0	0
二級本地船長	Coxswain Grade 2	116	39	62	25
三級本地船長	Coxswain Grade 3	30	24	16	7
一級輪機操作員	Engine Operator Grade 1	0	0	0	0
二級輪機操作員	Engine Operator Grade 2	25	14	24	15
三級輪機操作員	Engine Operator Grade 3	34	25	48	20
總計	Total	205	102	150	67

表 27 – 續
TABLE 27 – Cont'd

E. 其他考試／評定 Other Examinations/Assessments		2018		2019	
		申請人數 Number of Applications	及格人數 Number of Successes	申請人數 Number of Applications	及格人數 Number of Successes
培訓合格證書	Certificate of Proficiency (CoP)				
甲板高級海員	Able Seafarer Deck	1	0	1	1
導航值班普通船員	Navigational Watch Rating	0	0	0	0
機房高級海員	Able Seafarer Engine	5	2	2	2
機房值班普通船員	Engine Room Watch Rating	2	2	0	0
電子技術普通船員	Electro-Technical Rating	0	0	0	0
其他	Others	244	239	146	143
類型級別證明書 (考試、重新生效及 夜航批准)	Type Rating Certificate (Examination, Revalidation and Night Service Approval)	446	414	377	359
香港執照	Hong Kong Licence	20 905	19 353	21 430	19 611
本地豁免	Local Exemption	18	18	77	73
總計	Total	21 621	20 028	22 033	20 189

F. 截至 2019 年 12 月 31 日為止的海員註冊人數 Seafarer's Registration as at 31.12.2019			
根據第 478 章註冊的海員 Seafarers Registered Under Cap. 478	第一部 Part I	第二部 Part II	總計 Total
	5 085	1 704	6 789

表 27 - 續
TABLE 27 - Cont'd

G. 2019 年所簽發的僱用登記簿數目 Employment Registration Books Issued, 2019			
續發簿 Subsequent Books	補發簿 Replacement Books	新海員簿 New Entrants Books	總計 Total
2	1	101	104

H. 2019 年海員就業統計數字⁽²⁾ Seafarers Employment Statistics, 2019⁽²⁾			
僱用海員方式 Seafarers Employed Through			
核准公司名冊 Permitted Company Roster	總名冊 General Roster	緊急僱用／重新僱用等 Emergency/ Re-employment, etc.	總計 Total
300	34	1 005	1 339

I. 船公司及職位統計數字 Companies and Posts Statistics	
截至 2019 年12月31日為止在商船海員管理處登記僱用本港註冊海員的船公司數目 Shipping companies listed with Mercantile Marine Office to employ Hong Kong registered seafarers as at 31.12.2019	23
2019 年按船公司所交周年報表而編製的本港海員就業職位 Posts filled by Hong Kong seafarers as compiled from annual returns submitted by shipping companies, 2019	1 040

表27 – 續
TABLE 27 – Cont'd

J. 2019 年訂立和終結的香港註冊船舶船員協議條款 Crew Agreements of Hong Kong Registered Ships Opened and Closed, 2019				
	訂立的協議 Agreements Opened		終結的協議 Agreements Closed	
	在香港境內 In Hong Kong	在香港境外 Outside Hong Kong	在香港境內 In Hong Kong	在香港境外 Outside Hong Kong
船員協議條款數目 No. of agreements	66	1 254	81	1 547
總計 Total	1 320		1 628	

K. 香港註冊船舶僱用和解職的海員人次⁽³⁾ Number of Employment and Discharge of Seafarers⁽³⁾ by Hong Kong Registered Ships	2018	2019
僱用的海員人次 No. of employment of seafarers	57 180	79 200
解職的海員人次 No. of discharge of seafarers	84 780	97 680

- 註釋：
Notes:
- (1) 包括有關證明書批註、豁免、重新生效等事宜的申請。
Including applications for endorsement, exemption and revalidation etc.
- (2) 數字指年內本港註冊海員的僱用協議數目。
Figures refer to number of employment agreements of Hong Kong registered seafarers during the year.
- (3) 數字包括在香港以外地方註冊的海員。
Figures include seafarers registered outside Hong Kong.
- 資料來源：
Data Sources:
- (A) – (E) 海事處海員發證組
Seafarers' Certification Section, Marine Department
- (F) – (K) 海事處船舶註冊及商船海員管理處
Shipping Registry and Mercantile Marine Office, Marine Department

表 28
TABLE 28

香港註冊船舶統計數字 (截至 2019 年年底)
Statistics on Ships Registered in Hong Kong (as at end 2019)

A. 船舶數目和噸位
Number of Ships and Tonnage

	船舶註冊概況 On register
船舶數目 No. of Ships	2 596
淨噸位 ⁽¹⁾ (千噸) Net Tonnage ⁽¹⁾ ('000 tons)	68 536
總噸位 ⁽¹⁾ (千噸) Gross Tonnage ⁽¹⁾ ('000 tons)	127 448

B. 按總噸位分析在香港註冊的船舶數目
Ships Registered in Hong Kong by Gross Tonnage

總噸位 ⁽¹⁾ Gross Tonnage ⁽¹⁾	船舶數目 No. of Ships
< 500	140
500 - < 1 000	48
1 000 - < 5 000	80
5 000 - < 10 000	258
10 000 - < 15 000	81
15 000 - < 20 000	172
20 000 - < 25 000	211
25 000 - < 30 000	203
30 000 - < 35 000	207
35 000 - < 40 000	163
40 000 - < 45 000	241
45 000 - < 50 000	47
50 000 - < 55 000	77
55 000 - < 60 000	19
60 000 - < 65 000	41
65 000 - < 85 000	25
85 000 - < 115 000	282
115 000 - < 145 000	83
145 000 - < 175 000	155
175 000 - < 200 000	23
≥ 200 000	40
總計 Total	2 596

表 28 – 續
TABLE 28 – Cont'd

C. 按船舶種類分析在香港註冊的船舶數目
Ship Registered in Hong Kong by Ship Type

船舶類型	Type of Ship	船舶數目 No. of Ships	總噸位 ⁽¹⁾ (千噸) Gross Tonnage ⁽¹⁾ ('000 tons)
貨船	Cargo Ship	1 946	101 082
散裝貨船	Bulk Carrier	1 034	45 645
集裝箱船	Container Vessel	555	35 753
一般貨船	General Cargo Ship	216	3 732
礦沙／散貨／ 油類混用船	Ore/Bulk/Oil (OBO) Carrier	109	14 983
其他貨船	Other Cargo Ship	32	969
液貨船	Tanker	488	26 285
油輪	Oil Tanker	242	18 599
化學品運載船	Chemical Tanker	167	3 175
液化氣體運載船	Gas Carrier	67	4 130
其他液貨船	Other Tanker	12	381
拖船	Tug	33	13
客船	Passenger Ship	67	62
高速客船	High Speed Craft	50	27
其他客船	Other Passenger Ship	17	35
遊艇	Yacht	62	7
總計	Total	2 596	127 448

註釋： (1) 淨噸位及總噸位以每單位 100 立方呎計算。
Note: Net and gross tonnages are in units of 100 cubic feet.

資料來源： 海事處船舶註冊處
Data Source: Shipping Registry, Marine Department

表 29
TABLE 29
政府船隊統計數字
Government Fleet Statistics

項目	Item	2018	2019
1. 開支預算總額 ⁽¹⁾ (百萬元)	Total expenditure estimate ⁽¹⁾ (\$M)	629.5	644.2
2. 政府船隊科實際員額總數(包括船員) ⁽²⁾	Total strength in Government Fleet Division (GFD) (including crew) ⁽²⁾	437	461
3. (i) 建成及交收的政府新船	(i) Government new vessels built and delivered	19	66
(ii) 建造中的政府新船	(ii) Government new vessels under construction	213	118
(iii) 已完成的政府新船計劃	(iii) Government new vessel projects completed	6	8
(iv) 正進行中的政府新船計劃	(iv) Government new vessel projects in progress	25	27
4. 新船招標／報價	Tenders/Quotations called for new vessels	10	16
5. 新船合約	Contracts awarded for new vessels	6	14
6. 已完成的合約及購買規格書	Contracts and procurement specifications completed	31	29
7. (i) 政府船舶總數 ⁽²⁾	(i) Total number of vessels ⁽²⁾	905	924
a. 大型機動船舶	a. Major mechanised vessels	97	98
b. 小型機動船／小快艇	b. Minor mechanised vessels/small speed boats	25*	24
c. 大型高速船	c. High speed craft (large type)	13	15
d. 中型高速船	d. High speed craft (medium type)	59*	58
e. 其他雜類型船舶	e. Other miscellaneous class vessels	711*	729
(ii) 配備海事處人員的政府船舶 ⁽²⁾	(ii) Government craft manned by the Marine Department (MD) ⁽²⁾	48	51
(iii) 海事處可供調配船員的時數率	(iii) MD crew staff time available for deployment	85.9%	86.6%
(iv) 已處理報廢的政府船舶	(iv) Government craft disposed	14	29
8. (i) 可使用機動船的可提供使用率 ^{(3) (4)}	(i) Availability of mechanised vessels in use ^{(3) (4)}	87.8%	87.3%
(ii) 可使用機動船的平均數目 ⁽³⁾	(ii) Average number of mechanised vessels in use ⁽³⁾	110	195
(iii) 船舶維修後首次試航成功率	(iii) Vessel seatrial successful rate in first attempt after repair maintenance service	96.4%	96.0%
(iv) 政府船隊維修保養服務使用者滿意率	(iv) User satisfaction level on Government fleet repair maintenance service	99.8%	99.5%
9. 可使用機動船(包括他們的機動子艇) 保養費總額 (百萬元) ⁽³⁾	Total maintenance cost of mechanised vessels in use (including their mechanised daughter boats) (\$M) ⁽³⁾	218.8	254.7
10. 可使用機動船 (包括他們的機動子艇) 平均保養費 (百萬元) ⁽³⁾	Average maintenance cost of mechanised vessels in use (including their mechanised daughter boats) (\$M) ⁽³⁾	2.0	1.3

表 29 – 續
TABLE 29 – Cont'd

項目	Item	2018	2019
11. (i) 船舶維修定期保養合約安排總數	(i) Total number of vessel maintenance term contract (TC) arrangements	51	55
a. 根據合約保養的船舶數目	a. Number of vessels maintained under TC	501	513
b. 根據合約保養的主機數目	b. Number of main engines repaired under TC	236	298
(ii) 採購機械零件的定期合約數目	(ii) Number of TC for procurement of machinery spare parts	24	21
12. 配備海事處人員的政府船舶肇事個案	Accidents involving Government craft manned by MD		
(i) 肇事政府船舶數目	(i) Number of Government vessels involved	10	5
(ii) 工傷意外傷亡數目	(ii) Number of casualties in industrial accidents		
a. 船塢員工	a. Dockyard staff	2	0
b. 船員	b. Crew	8	5
13. 參加職業安全及健康 (職安健) 課程的政府船塢人員人數	Number of attendees of Government Dockyard to Occupational Safety and Health (OSH) training courses		
(i) 職業安全健康局舉辦課程	(i) Organised by the OSH Council	9	2
(ii) 政府船隊科工業安全組舉辦的課程	(ii) Organised by the Industrial Safety Section, GFD	117	122
(iii) 其他職安健課程	(iii) Other OSH courses	91	149

- 註釋： (1) 指財政年度內的數字 (由當年 4 月 1 日至下年 3 月 31 日)。
Notes: Figures refer to those in financial year (i.e. from 1 April of current year to 31 March of next year).
- (2) 指該年年底的數字。
Figures refer to the position as at end of the year.
- (3) 在 2018 年，可使用機動船涵蓋大型機動船及大型高速船。由 2019 年起，小型機動船／小快艇及中型高速船亦涵蓋在可使用機動船內。
In 2018, mechanised vessels in use include major mechanised vessels and high speed craft (large type). From 2019 onwards, mechanised vessels in use also include minor mechanised vessels/small speed boats and high speed craft (medium type).
- (4) 數字包括在政府船塢以內及以外因維修而停船的時間。
Figures include downtime due to repair conducted inside and outside the Government Dockyard.

資料來源： 海事處政府船隊科
Data Source: Government Fleet Division, Marine Department

表 30
TABLE 30

政府船舶所屬部門及可用率情況 (截至 2019 年年底)
Departmental Ownership and Availabilities of Government Vessels (as at end 2019)

船舶類型 Vessel Type	所屬部門 Departmental Ownership														
	漁農 自然 護理署 AFCD	醫療 輔助隊 AMS	民眾 安全 服務隊 CAS	土木 工程 拓展署 CEDD	懲教署 CSD	香港 海關 C&ED	環境 保護署 EPD	消防處 FSD	衛生署 DH	香港 警務處 HKPF	入境 事務處 Imm D	康樂及 文化 事務署 LCSD	海事處 MD	水務署 WSD	總計 Total
機動子艇及泳灘艇 Mechanised Daughter Boats & Beach Craft	0	0	0	0	0	7	0	9	0	16	0	128	1	0	161
浮橋物／泳灘浮台及浮筏 Floating Bridge Structures/Beach Platforms & Rafts	0	0	0	0	0	0	0	0	0	0	0	473	0	0	473
機動及非機動充氣式橡皮艇 Mechanised and Non-mechanised Inflatable Boats	1	1	11	0	0	2	1	12	0	6	0	0	2	2	38
駁船 Lighters	0	0	0	0	0	0	0	1	0	6	0	0	21	0	28
小艇 Dinghies	9	0	0	0	0	0	0	5	0	3	0	0	10	2	29
大型機動船 Major Mechanised Vessels	4	0	0	3	2	7	1	11	1	36	7	0	26	0	98
小型機動船／小快艇 Minor Mechanised Vessels/Small Speed Boat	5	0	0	0	0	0	0	8	0	6	0	0	2	3	24
大型高速船 High Speed Craft (large type)	0	0	0	0	0	4	0	0	0	11	0	0	0	0	15
中型高速船 High Speed Craft (medium type)	6	0	0	0	0	2	0	2	0	43	0	0	5	0	58
總計 Total	25	1	11	3	2	22	2	48	1	127	7	601	67	7	924
可使用機動船的平均可提供使用率 ⁽¹⁾ Average Availability of Mechanised Vessels in use ⁽¹⁾	89.1%	-	-	87.0%	96.2%	86.7%	95.6%	86.0%	85.9%	86.8%	85.4%	-	87.8%	96.0%	87.3%

註釋： (1) 由 2019 年起，可使用機動船涵蓋 4 類機動船，即大型機動船、小型機動船／小快艇、大型高速船及中型高速船。使用率數字包括在政府船塢以內及以外因維修而停船的時間。

Note: From 2019 onwards, mechanised vessels in use include four types of mechanised vessels, i.e. major mechanised vessels, minor mechanised vessels/small speed boats, high speed craft (large type) and high speed craft (medium type). Figures on average availability include downtime due to repair conducted inside and outside the Government Dockyard.

資料來源： 海事處政府船隊科

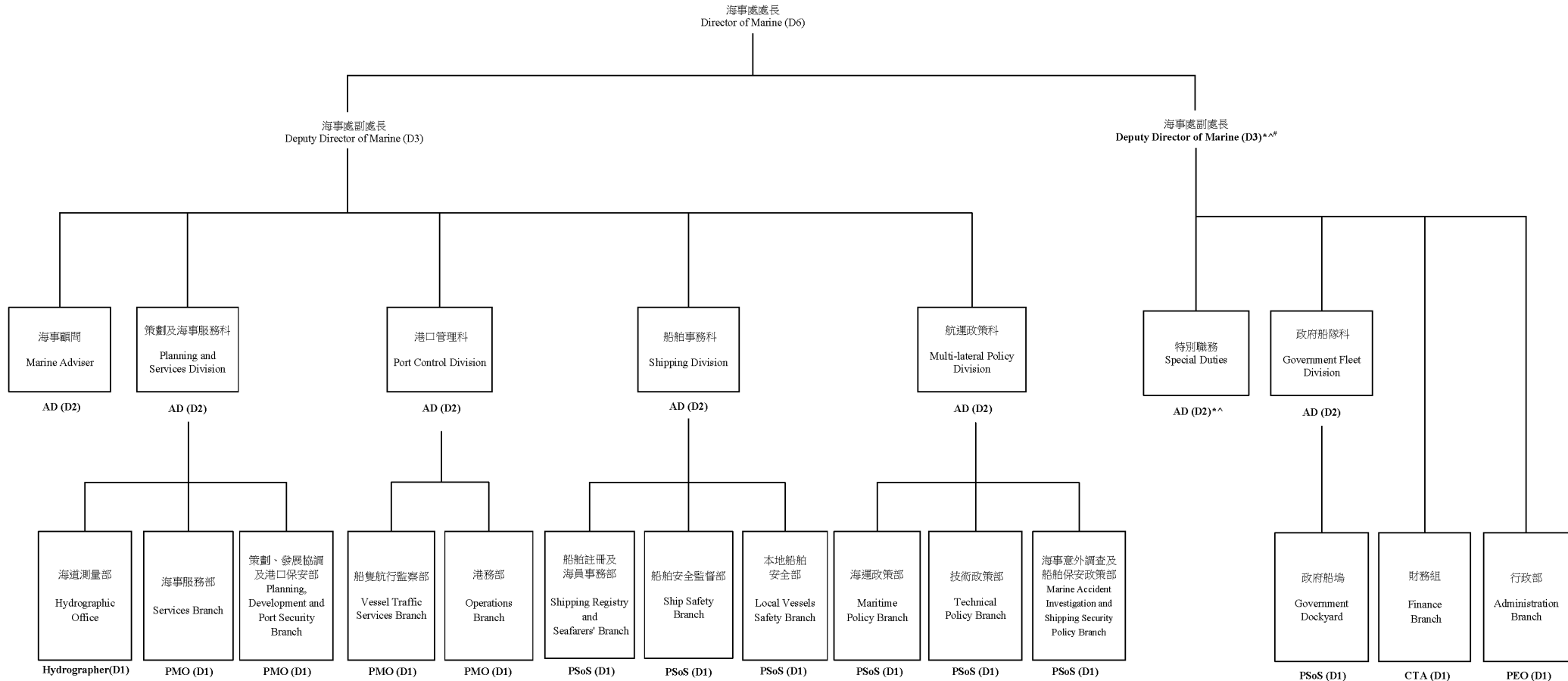
Data Source: Government Fleet Division, Marine Department

附 錄

Appendices

附錄 A APPENDIX A

海事處組織架構圖 (截至 2019 年年底) Organisation Chart of the Marine Department (as at end 2019)



* Supernumerary post 編外職位

^ Deputy Director (Special Duties) and Assistant Director (Special Duties) also oversees Local Vessels Safety Section and Quality Management Section

副處長(特別職務)及助理處長(特別職務)亦負責管理本地船舶安全組及質量管理組

Deputy Director (Special Duties) also oversees Information and Public Relations Section and Senior Administrative Officer (Policy Support)

副處長(特別職務)亦負責管理新聞及公共關係組及高級政務主任(政策支援)

圖例： AD = 海事處助理處長 Assistant Director of Marine
PMO = 首席海事主任 Principal Marine Officer
PSoS = 首席驗船主任 Principal Surveyor of Ships
Hydrographer = 海道測量師 Hydrographer

PEO = 首席行政主任 Principal Executive Officer
CTA = 總庫務會計師 Chief Treasury Accountant
D6 = 首長薪級第六點 (如此類推) Directorate Level 6 (and so on)

附錄 B
APPENDIX B

海事處的編制和實際員額 (截至 2019 年年底)
Establishment and Strength of the Marine Department (as at end 2019)

		編制 Establishment	實際員額 Strength
首長級人員 Directorate Officers			
海事處處長	Director of Marine (D6)	1	0
首長級甲級政務官	Administrative Officer Staff Grade A (D6)	0	1
海事處副處長	Deputy Director of Marine (D3)	1	1
首長級乙級政務官	Administrative Officer Staff Grade B (D3)	1♦	1
海事處助理處長	Assistant Director of Marine (D2)	6 + 2♦	7
首席驗船主任	Principal Surveyor of Ships (D1)	7 + 1♦	6
首席海事主任	Principal Marine Officer (D1)	4 + 1♦	4
海道測量師	Hydrographer (D1)	1	1
首席行政主任	Principal Executive Officer (D1)	1	1
總庫務會計師	Chief Treasury Accountant (D1)	1	0
部門職系 Departmental Grade			
高級驗船主任	Senior Surveyor of Ships	21	15
驗船主任／ 助理驗船主任	Surveyor of Ships/ Assistant Surveyor of Ships	38	30
高級海事主任	Senior Marine Officer	19	9
海事主任／ 助理海事主任	Marine Officer/ Assistant Marine Officer	39	27
高級船舶安全主任	Senior Shipping Safety Officer	1	1
船舶安全主任	Shipping Safety Officer	7	6
海事監督	Marine Controller	15 + 1♦	8
助理海事監督	Assistant Marine Controller	51	55
輔航設備監督	Superintendent of Aids to Navigation	1	1
助理輔航設備監督	Assistant Superintendent of Aids to Navigation	2 + 1♦	2
總驗船督察	Chief Ship Inspector	2	1
高級驗船督察	Senior Ship Inspector	13 + 2♦	12
驗船督察	Ship Inspector	30	15
助理驗船督察	Assistant Ship Inspector	24	43
高級助理船務主任	Senior Assistant Shipping Master	28 + 2♦	23
一級海事督察	Marine Inspector I	103 + 3♦	95
二級海事督察	Marine Inspector II	131	136
小輪大偈	Launch Mechanic	1	1

附錄 B – 續
APPENDIX B – Cont'd

		編制 Establishment	實際員額 Strength
一般職系 General Grade			
高級政務主任	Senior Administrative Officer	1	0
政務主任	Administrative Officer	0	1
總行政主任	Chief Executive Officer	2	2
高級行政主任	Senior Executive Officer	4	3
一級行政主任	Executive Officer I	7	7
二級行政主任	Executive Officer II	10	12
高級庫務會計師	Senior Treasury Accountant	1	2
庫務會計師	Treasury Accountant	3	3
高級會計主任	Senior Accounting Officer	1	1
一級會計主任	Accounting Officer I	1	1
二級會計主任	Accounting Officer II	3	3
總管理參議主任	Chief Management Services Officer	1	1
高級管理參議主任	Senior Management Services Officer	1	1
二級管理參議主任	Management Services Officer II	2	2
高級法定語文主任	Senior Official Languages Officer	1	1
一級法定語文主任	Official Languages Officer I	2	1
二級法定語文主任	Official Languages Officer II	2	3
高級系統經理	Senior Systems Manager	0	1
系統經理	Systems Manager	3	2
一級系統分析／ 程序編製主任	Analyst/Programmer I	6	6
二級系統分析／ 程序編製主任	Analyst/Programmer II	6	6
高級統計師	Senior Statistician	1	1
一級統計主任	Statistical Officer I	1	1
二級統計主任	Statistical Officer II	3	4

附錄 B – 續
APPENDIX B – Cont'd

		編制 Establishment	實際員額 Strength
一般職系 (續) General Grade (Cont'd)			
高級土地測量師	Senior Land Surveyor	2 + 1 [◆]	3
土地測量師／ 助理土地測量師	Land Surveyor/ Assistant Land Surveyor	6	6
首席測量主任 (工程)	Principal Survey Officer (Engineering)	1	1
高級測量主任 (工程)	Senior Survey Officer (Engineering)	4	4
測量主任 (工程)／ 見習測量主任 (工程)	Survey Officer (Engineering)/ Survey Officer Trainee (Engineering)	12	11
總技術主任 (製圖)	Chief Technical Officer (Cartographic)	1	1
首席技術主任 (製圖)	Principal Technical Officer (Cartographic)	1	0
高級技術主任 (製圖)	Senior Technical Officer (Cartographic)	6	7
技術主任 (製圖)／ 見習技術主任 (製圖)	Technical Officer (Cartographic)/ Technical Officer Trainee (Cartographic)	9	9
高級電子工程師	Senior Electronics Engineer	1	0
電子工程師／ 助理電子工程師	Electronics Engineer/ Assistant Electronics Engineer	2	2
電子督察	Electronics Inspector	1	1
高級私人秘書	Senior Personal Secretary	1	1
一級私人秘書	Personal Secretary I	8	8
二級私人秘書	Personal Secretary II	16	14
打字員	Typist	2	1
機密檔案室助理	Confidential Assistant	1	1
高級文書主任	Senior Clerical Officer	6 + 1 [◆]	6
文書主任	Clerical Officer	31 + 2 [◆]	26
助理文書主任	Assistant Clerical Officer	81	84
文書助理	Clerical Assistant	120 + 2 [◆]	118
辦公室助理員	Office Assistant	4	4

附錄 B – 續
APPENDIX B – Cont'd

		編制 Establishment	實際員額 Strength
一般職系 (續) General Grade (Cont'd)			
總物料供應主任	Chief Supplies Officer	1	1
高級物料供應主任	Senior Supplies Officer	1	0
物料供應主任	Supplies Officer	2	1
助理物料供應主任	Assistant Supplies Officer	1	3
高級物料供應員	Senior Supplies Supervisor	1	0
一級物料供應員	Supplies Supervisor I	3	2
二級物料供應員	Supplies Supervisor II	11 + 1♦	14
助理物料供應員	Supplies Assistant	3	3
物料供應服務員	Supplies Attendant	2	2
繕校員	Calligraphist	1	0
助理空氣調節督察	Assistant Air-Conditioning Inspector	1	1
汽車司機	Motor Driver	4	4
共通職系 Common Grade			
總技術主任	Chief Technical Officer	2	1
高級電氣督察	Senior Electrical Inspector	2	2
電氣督察	Electrical Inspector	3	2
助理電氣督察	Assistant Electrical Inspector	1	1
高級機械督察	Senior Mechanical Inspector	7	7
機械督察	Mechanical Inspector	8	8
小輪船員督導員	Launch Crew Supervisor	3	3
高級小輪船長	Senior Launch Master	56 + 5♦	51
小輪船長	Launch Master	50 + 4♦	55
小輪助理員	Launch Assistant	211 + 1♦	198

附錄 B – 續
APPENDIX B – Cont'd

		編制 Establishment	實際員額 Strength
共通職系（續） Common Grade (Cont'd)			
一級監工	Works Supervisor I	12	8
二級監工	Works Supervisor II	8 + 1 [◆]	10
高級技工	Senior Artisan	38	34
技工	Artisan	68	35
丈量員	Chainman	2 + 1 [◆]	2
二級工人	Workman II	38	34
總計	Total	1 466 + 33[◆]	1 357

註釋： ◆ 編外職位

Note: Supernumerary post

附錄 C
APPENDIX C

2019 年海事處訓練組舉辦的課程
Training Courses Conducted by Training Section, Marine Department, 2019

課程名稱 Course Title	學期(天) Duration (days)	參加學員 ⁽¹⁾ Target Participants ⁽¹⁾	班級數目 Number of Classes	學員數目 Number of Participants
1. 搜救衛星任務控制中心操作員課程 Cospas-Sarsat Mission Control Centre Operator Course	5	<i>MI I, MI II</i>	1	4
2. 全球海事遇險及安全系統(海岸電台操作員證書)課程 Global Maritime Distress and Safety System (GMDSS) (Coast Station Operator Certificate) Course	11	<i>MI I, MI II</i>	1	4
3. 海上救援協調中心全球海上遇險及安全系統課程 Global Maritime Distress and Safety System (GMDSS) in Maritime Rescue Co-ordination Centre (MRCC) Course	11	<i>MI I, MI II</i>	1	4
4. 海上救援協調中心全球海上遇險及安全在職訓練課程 Global Maritime Distress and Safety System (GMDSS) On-the-Job Training Course	30	<i>MI I, MI II</i>	2	5
5. 全球海上遇險及安全系統(限用操作員證書課程) Global Maritime Distress and Safety System (GMDSS) (Restricted Operator's Certificate Course)	5	<i>MI II</i>	3	17
6. 國際海空海上搜尋救助課程 International Aeronautical and Maritime Search and Rescue (IAMSAR) Course	5	<i>AMO, MO</i>	1	10
7. 新招聘海事主任、助理海事主任及助理海事監督導引 課程 Induction Training Programme for the Grade of Newly Recruited Marine Officer, Assistant Marine Officer & Assistant Marine Controller	2	<i>AMO, MO</i>	2	6
8. 本地船舶模擬駕駛操作訓練課程 Local Craft Simulation Training	4	<i>C&E, FSD, LM</i>	1	10
9. 海事督察訓練課程 – 甲部 Marine Inspector Training Course – Part A	30	<i>MI II</i>	2	19
10. 海事督察訓練課程 - 乙部 Marine Inspector Training Course – Part B	50	<i>MI II</i>	2	16
11. 民安隊海上油污訓練課程 Oil Pollution Course for CAS Staff	2	<i>CAS</i>	1	20
12. 現場協調員課程 On Scene Co-ordinator Course	4	<i>FSD, HKPF, MI I, MO</i>	1	13
13. 香港水域雷達操作員課程 Radar Operator Course for Hong Kong Waters	7	<i>C&E, HKPF, OFCA, LM</i>	1	11
14. 船舶排放黑煙 (Ringelmann Chart) 應用課程 Ringelmann Chart Application Course on Dark Smoke Emission	0.5	<i>MI I, MI II</i>	1	13
15. 船舶交通服務重新生效課程 VTS Revalidation Course	2	<i>MC</i>	1	2
總計 Total			21	154

附錄 C – 續 APPENDIX C - Cont'd

註釋： (1) 參加課程的機構或海事處職員職位詳列於下表：

Note: Organisations or posts in Marine Department participated in the training courses are listed below:

機構	Organisation	縮寫 Abbreviation
香港海關	Customs and Excise Department	C&E
民眾安全服務隊	Civil Aid Service	CAS
香港消防處	Hong Kong Fire Services Department	FSD
香港警務處	Hong Kong Police Force	HKPF
通訊事務管理局辦公室	Office of the Communications Authority	OFCA

海事處職員職位	Post in Marine Department	縮寫 (以斜體表示) Abbreviation (showed in italics)
助理海事主任	Assistant Marine Officer	<i>AMO</i>
小輪船長	Launch Master	<i>LM</i>
海事監督	Marine Controller	<i>MC</i>
一級海事督察	Marine Inspector I	<i>MI I</i>
二級海事督察	Marine Inspector II	<i>MI II</i>
海事主任	Marine Officer	<i>MO</i>

附錄 D
APPENDIX D
2019 年海事處訪客
Visitors to the Marine Department, 2019

海事處於 2019 年接待了以下訪客：

During the year of 2019, the Marine Department hosted the following visitors:

編號 No.	訪問日期 Date of Visit	機構／代表 Organisation/Representative
1.	11.1.2019	民航處 Civil Aviation Department
2.	23.1.2019	越南駐香港領事館 Consulate General of Vietnam in Hong Kong
3.	26.1.2019	商校合作計劃（香港海事專才聯盟） Business-School Partnership Programme (Maritime Professional Promotion Federation)
4.	26.1.2019	海事專才推廣聯盟及香港海事科技學會 Maritime Professional Promotion Federation & The Hong Kong Institute of Marine Technology
5.	19.2.2019	美國駐港澳總領事館 U.S. Consulate General in Hong Kong & Macau
6.	14.3.2019	商校合作計劃（拔萃男書院） Business-School Partnership Programme (Diocesan Boys' School)
7.	25.3.2019, 29.5.2019, 22.7.2019, 18.9.2019, 26.9.2019 and 10.12.2019	香港警務處 Hong Kong Police Force
8.	4.4.2019	俄羅斯聯邦駐中華人民共和國商務代表處 Russian Trade Representation in People's Republic of China
9.	13.4.2019	校園推廣計劃（仁濟醫院第二中學） School Promotion Programme (Yan Chai Hospital No.2 Secondary School)
10.	25.4.2019	校園推廣計劃（培僑中學） School Promotion Programme (Piu Kiu Middle School)
11.	29.4.2019	阿姆斯特丹港的可再生產業部門主管 Head of Department Circular & Renewable Industry at Port of Amsterdam
12.	1.5.2019	蘇浙公學校友會 Kiangsu-Chekiang College Alumni Association
13.	3.5.2019	校園推廣計劃（救世軍卜維廉中學） School Promotion Programme (The Salvation Army William Booth Secondary School)
14.	7.5.2019	校園推廣計劃（中華基督教會方潤華中學） School Promotion Programme (The Church of Christ in China Fong Yun Wah Secondary School)
15.	7.5.2019	校園推廣計劃（中華基督教青年會中學（天水圍）） School Promotion Programme (Chinese YMCA Secondary School)
16.	7.5.2019	商校合作計劃（中華基督教青年會中學（天水圍）） Business-School Partnership Programme (Chinese YMCA Secondary School)

附錄 D - 續
APPENDIX D - Cont'd

編號 No.	訪問日期 Date of Visit	機構／代表 Organisation/Representative
17.	8.5.2019 to 10.5.2019	中華船員外僱輔導會 Taiwan Seafarer Association
18.	9.5.2019	DNV GL AS, 香港辦事處 DNV GL AS, Hong Kong Branch
19.	14.5.2019	湛江海事局（寧文娟小姐） Zhanjiang Maritime Safety Administration (Ms. Ning Wenjuan)
20.	14.6.2019	香港天文台 Hong Kong Observatory
21.	22.6.2019, 22.7.2019 and 11.12.2019	水警訓練學校 Marine Police Training School
22.	5.7.2019	校園推廣計劃（孔聖堂中學） School Promotion Programme (Confucius Hall Secondary School)
23.	9.7.2019	香港大學學生會（機械工程學會及工程學會） Hong Kong University Students' Union (Mechanical Engineering Society and Engineering Society)
24.	12.7.2019	「友、導向」師友計劃－職場體驗 2019（聖公會林護紀念中學） "Life Buddies" Mentoring Scheme - Job Tasting Programmes 2019 (SKH Lam Woo Memorial Secondary School)
25.	24.7.2019	廣東海事局 Guangdong Maritime Safety Administration
26.	23.8.2019	海運和航空業實習計劃（海運）（嘉宏航運有限公司、敦豪全球貨運物流（香港）有限公司、香港船廠有限公司、香港聯合船塢、近鉄國際貨運（香港）有限公司） Maritime and Aviation Internship Scheme (Maritime) – (Cargo Services Fast East Limited, DHL Global Forwarding (Hong Kong) Limited, Hong Kong Shipyard Limited, Hong Kong United Dockyards Limited, Kintetsu World Express (HK) Limited)
27.	15.10.2019	巴西駐港總領事館（巴西旅遊部部長） Consulate General of Brazil in Hong Kong (Minister of Tourism of Brazil)
28.	18.10.2019	香港工程師學會 The Hong Kong Institution of Engineers
29.	25.10.2019	政府飛行服務隊 Government Flying Service
30.	5.11.2019 to 7.11.2019	香港航海學校 Hong Kong Sea School
31.	12.11.2019	勞埃德海事學院 Lloyd's Maritime Academy
32.	13.11.2019	紐約市立大學博士生（Mr. Liang WU） The Graduate Center of the City University of New York (Mr. Liang Wu, Doctoral Candidate)
33.	17.11.2019 to 23.11.2019	東京諒解備忘錄（久保田秀夫先生秘書長） Tokyo Memorandum of Understanding (Mr. Hideo KUBOTA Secretary)
34.	19.11.2019	丹麥海事局 Danish Maritime Authority

附錄 D - 續
APPENDIX D - Cont'd

編號 No.	訪問日期 Date of Visit	機構／代表 Organisation/Representative
35.	21.11.2019	香港理工大學（物流及航運學系） Hong Kong Polytechnic University (Department of Logistics and Maritime Studies)
36.	21.11.2019	香港海運週 2019 Hong Kong Maritime Week 2019
37.	7.12.2019	政府飛行服務隊（飛行醫生） Government Flying Service (Air Medical Officer)
38.	18.12.2019	韓國駐香港總領事館 The Consulate General of the Republic of Korea in Hong Kong

附錄 E
APPENDIX E

2019 年刊憲的海事及航運法例
Maritime and Shipping Legislations Gazetted, 2019

2019 年在憲報刊登的海事及航運法例：
The maritime and shipping legislation published in the Gazette in 2019:

法例名稱 Title	參考編號 Reference No.
2019 年〈2018 年商船(安全)(客船構造)(1984 年 9 月 1 日之前建造的船舶)(修訂)(第 2 號)規例〉(修訂)規例 Merchant Shipping (Safety) (Passenger Ship Construction) (Ships Built Before 1 September 1984) (Amendment) (No. 2) Regulation 2018 (Amendment) Regulation 2019	2019 年第 2 號法律公告 L.N. 2 of 2019
商船(海員)(使用低閃點燃料船舶)規例 Merchant Shipping (Seafarers) (Ships Using Low-flashpoint Fuels) Regulation	2019 年第 15 號法律公告 L.N. 15 of 2019
2019 年商船(海員)(客船 - 訓練)(修訂)規例 Merchant Shipping (Seafarers) (Passenger Ships-Training) (Amendment) Regulation 2019	2019 年第 16 號法律公告 L.N. 16 of 2019
商船(海員)(極地水域操作船舶)規例 Merchant Shipping (Seafarers) (Ships Operating in Polar Waters) Regulation	2019 年第 17 號法律公告 L.N. 17 of 2019
2019 年行政上訴委員會條例(修訂附表)令 Administrative Appeals Board Ordinance (Amendment of Schedule) Order 2019	2019 年第 18 號法律公告 L.N. 18 of 2019
2019 年商船(海員)(費用)(修訂)規例 Merchant Shipping (Seafarers) (Fees) (Amendment) Regulation 2019	2019 年第 19 號法律公告 L.N. 19 of 2019
2019 年商船(海員)(資格證明及值班)(修訂)規例 Merchant Shipping (Seafarers) (Certification and Watchkeeping) (Amendment) Regulation 2019	2019 年第 20 號法律公告 L.N. 20 of 2019
2019 年商船(防止空氣污染)(修訂)規例 Merchant Shipping (Prevention of Air Pollution) (Amendment) Regulation 2019	2019 年第 21 號法律公告 L.N. 21 of 2019
2019 年商船(防止及控制污染)(費用)(修訂)規例 Merchant Shipping (Prevention and Control of Pollution) (Fees) (Amendment) Regulation 2019	2019 年第 22 號法律公告 L.N. 22 of 2019
2019 年商船(安全)(〈國際海運固體散裝貨物規則〉)(修訂)規例 Merchant Shipping (Safety) (IMSBC Code) (Amendment) Regulation 2019	2019 年第 36 號法律公告 L.N. 36 of 2019
商船(安全)(極地水域操作船舶)規例 Merchant Shipping (Safety) (Ships Operating in Polar Waters) Regulation	2019 年第 44 號法律公告 L.N. 44 of 2019
2019 年商船(防止油類污染)(修訂)規例 Merchant Shipping (Prevention of Oil Pollution) (Amendment) Regulation 2019	2019 年第 45 號法律公告 L.N. 45 of 2019
2019 年商船(控制散裝有毒液體物質污染)(修訂)規例 Merchant Shipping (Control of Pollution by Noxious Liquid Substances in Bulk) (Amendment) Regulation 2019	2019 年第 46 號法律公告 L.N. 46 of 2019

附錄 E – 續
APPENDIX E – Cont'd

法例名稱 Title	參考編號 Reference No.
2019 年商船(防止污水污染)(修訂)規例 Merchant Shipping (Prevention of Pollution by Sewage) (Amendment) Regulation 2019	2019 年第 47 號法律公告 L.N. 47 of 2019
2019 年商船(防止廢物污染)(修訂)規例 Merchant Shipping (Prevention of Pollution by Garbage) (Amendment) Regulation 2019	2019 年第 48 號法律公告 L.N. 48 of 2019
2019 年船舶及港口管制(修訂)規例 Shipping and Port Control (Amendment) Regulation 2019	2019 年第 69 號法律公告 L.N. 69 of 2019
2019 年商船(本地船隻)(一般)(修訂)規例 Merchant Shipping (Local Vessels) (General) (Amendment) Regulation 2019	2019 年第 70 號法律公告 L.N. 70 of 2019
2019 年船舶及港口管制(修訂)(寬免港口設施及燈標費)規例 Shipping and Port Control (Amendment) (Port Facilities and Light Dues Concessions) Regulation 2019	2019 年第 99 號法律公告 L.N. 99 of 2019
2019 年港口管制(貨物裝卸區)(修訂)(寬免費用)規例 Port Control (Cargo Working Areas) (Amendment) (Fee Concessions) Regulation 2019	2019 年第 100 號法律公告 L.N. 100 of 2019
2019 年商船(本地船隻)(費用)(修訂)(寬免費用)規例 Merchant Shipping (Local Vessels) (Fees) (Amendment) (Fee Concessions) Regulation 2019	2019 年第 112 號法律公告 L.N. 112 of 2019
2019 年商船(防止油類污染)(修訂)(第 2 號)規例 Merchant Shipping (Prevention of Oil Pollution) (Amendment) (No. 2) Regulation 2019	2019 年第 127 號法律公告 L.N. 127 of 2019
2019 年商船(防止廢物污染)(修訂)(第 2 號)規例 Merchant Shipping (Prevention of Pollution by Garbage) (Amendment) (No. 2) Regulation 2019	2019 年第 128 號法律公告 L.N. 128 of 2019
〈2016 年商船(本地船隻)(一般)(修訂)規例〉(生效日期)公告 Merchant Shipping (Local Vessels) (General) (Amendment) Regulation 2016 (Commencement) Notice	2019 年第 136 號法律公告 L.N. 136 of 2019
〈2016 年商船(本地船隻)(安全及檢驗)(修訂)規例〉(生效日期)公告 Merchant Shipping (Local Vessels) (Safety and Survey) (Amendment) Regulation 2016 (Commencement) Notice	2019 年第 137 號法律公告 L.N. 137 of 2019
2019 年船舶及港口管制(修訂)(第 2 號)規例 Shipping and Port Control (Amendment) (No.2) Regulation 2019	2019 年第 140 號法律公告 L.N. 140 of 2019
2019 年商船(本地船隻)(一般)(修訂)(第 2 號)規例 Merchant Shipping (Local Vessels) (General) (Amendment) (No.2) Regulation 2019	2019 年第 141 號法律公告 L.N. 141 of 2019
2019 年領港(費用)(修訂)令 Pilotage (Dues) (Amendment) Order 2019	2019 年第 146 號法律公告 L.N. 146 of 2019

附錄 E – 續
APPENDIX E – Cont'd

法例名稱 Title	參考編號 Reference No.
〈 2019 年領港條例(修訂附表 2) 〉 公告 Pilotage Ordinance (Amendment of Schedule 2) Notice 2019	2019 年第 147 號法律公告 L.N. 147 of 2019
2019 年商船(本地船隻)(安全及檢驗)(修訂)規例 Merchant Shipping (Local Vessels) (Safety and Survey) (Amendment) Regulation 2019	2019 年第 154 號法律公告 L.N. 154 of 2019
2019 年商船(本地船隻)(一般)(修訂)(第 3 號)規例 Merchant Shipping (Local Vessels) (General) (Amendment) (No.3) Regulation 2019	2019 年第 155 號法律公告 L.N. 155 of 2019
2019 年商船(海員)(工作及生活條件)(修訂)規例 [§] Merchant Shipping (Seafarers) (Working and Living Conditions) (Amendment) Regulation 2019 [§]	2019 年第 173 號法律公告 L.N. 173 of 2019
2019 年商船(海員)(家屬糧)(修訂)規例 [§] Merchant Shipping (Seafarers) (Allotments) (Amendment) Regulation 2019 [§]	2019 年第 174 號法律公告 L.N. 174 of 2019
2019 年商船(防止空氣污染)(修訂)(第 2 號)規例 Merchant Shipping (Prevention of Air Pollution) (Amendment) (No. 2) Regulation 2019	2019 年第 192 號法律公告 L.N. 192 of 2019

註釋： § 該法例自運輸及房屋局局長另以憲報公告指定的日期起實施。

Note: The legislation is to come into operation on a date to be appointed by the Secretary for Transport and Housing by separate notice published in the Gazette.

附錄 F
APPENDIX F
2019 年輔航設備
Aids to Navigation, 2019

A. 使用中的輔航設備
Aids to Navigation in Use

輔航設備	Aids to Navigation	截至 2019 年 12 月 31 日 As at 31.12.2019
1. 燈浮標	Light Buoy	135
2. 燈航標	Light Beacon	420
4. 雷達應答標	Racon	3
5. 霧角	Fog Horn	7

B. 本年新設的輔航裝置
New Aids Established during the Year

1. 中區軍用碼頭 1 CMD 1	於 2019 年 6 月 29 日設置 2 個燈浮標，以標示中區軍用碼頭內圍區域的限制區域。 Two light buoys were established on 29.6.2019 to mark the restricted area of the Central Military Dock Inner Area.
2. 中區軍用碼頭 2 CMD 2	

C. 本年拆除的輔航裝置
Aids Discontinued during the Year

1. 氣象 9 Weather 9	這 2 個燈浮標已於 2018 年 8 月 24 日暫時移走，並因超過 6 個月未被使用而從本年的名單中刪除。 Two light buoys were temporarily withdrawn on 24.8.2018. Owing to their suspension from service for over 6 months, they were deleted from the list in the year.
2. 氣象 10 Weather 10	
3. 氣象 11 Weather 11	這個燈浮標已於 2019 年 2 月 20 日暫時移走，並因超過 6 個月未被使用而從本年的名單中刪除。 The light buoy was temporarily withdrawn on 20.2.2019. Owing to its suspension from service for over 6 months, it was deleted from the list in the year.

附錄 F – 續
APPENDIX F – Cont'd

D. 本年遭損毀的輔航裝置
Aids Damaged during the Year

下列燈浮標及燈航標遭損毀，航標燈熄滅。

The light buoys and light beacons listed below were damaged and unlit.

月份	Month	名稱	Name
1 月	January	后海灣 G	Deep Bay G
		平洲-B	PC-B
3 月	March	青山 11	CP11
4 月	April	青山 3	CP 3
5 月	May	北航 2	Northern 2
6 月	June	青山 7	CP 7
		青山 9	CP 9
9 月	September	飯甌洲	Fan Tsang Chau
12 月	December	青山 5	CP 5
		沙龍 D	SLMP D
		龍鼓	Urmston

E. 本年改進的輔航裝置
Aids Reprovisioned during the Year

1. 下列燈航標已換上全新現代化器材，用以提高光達距離。

The light beacons listed below were upgraded with modern equipment for better luminous range.

月份	Month	名稱	Name
3 月	March	飯甌洲	Fan Tsang Chau
		喜靈洲 4	Hei Ling Chau 4
		喜靈洲 6	Hei Ling Chau 6
		企人石	Kei Yan Shek
		鹿頸碼頭	Luk Keng Pier
		大浪石	Wave Rock
4 月	April	伙頭墳洲碼頭	Fo Tau Fan Chau Pier
5 月	May	花坪碼頭	Fa Ping Pier
6 月	June	半山石	Pun Shan Shek
		大浪排	Tai Long Pai

附錄 F – 續
APPENDIX F – Cont'd

E. 本年改進的輔航裝置 (續)
Aids Reprovisioned during the Year (Cont'd)

1. 下列燈航標已換上全新現代化器材，用以提高光達距離。(續)
The light beacons listed below were upgraded with modern equipment for better luminous range. (Cont'd)

月份	Month	名稱	Name
7 月	July	長洲 3	Cheung Chau 3
		東芝麻灣	East Chi Ma Wan
		港珠澳大橋墩 3	HKLR Pier 3
		草灣碼頭	Tso Wan Pier
9 月	September	南堂尾	Tathong Point
10 月	October	銀礦灣	Silver Mine Bay
		汀九橋墩 1	Ting Kau Bridge Pier 1
11 月	November	喜靈洲 5	Hei Ling Chau 5
		東龍洲碼頭	Tung Lung Chau Pier

2. 下列燈浮標及燈航標已由全新現代化器材取代，用以提高其可靠性。
The light buoys and light beacons listed below were replaced with modern equipment for higher reliability.

月份	Month	名稱	Name
1 月	January	后海灣 E	Deep Bay E
2 月	February	哥連臣角	Cape Collinson
		鶴咀	Cape D'Aguilar
		汲水門橋墩 2	Kap Shui Mun Bridge Pier 2
3 月	March	青山 11	CP 11
		白沙灣	Hebe Haven
		奇力西	Kellett West
		橋咀洲碼頭	Kiu Tsui Chau Pier
		荔枝莊碼頭	Lai Chi Chong Pier
		鯉魚門	Lei Yue Mun
		龍山排	Lung Shan Pai
		火藥洲	Magazine Island
		北角	Pak Kok
		黃泥排	Wong Nei Pai

附錄 F – 續
APPENDIX F – Cont'd

E. 本年改進的輔航裝置 (續)

Aids Reprovisioned during the Year (Cont'd)

2. 下列燈浮標及燈航標已由全新現代化器材取代，用以提高其可靠性。(續)
The light buoys and light beacons listed below were replaced with modern equipment for higher reliability.
(Cont'd)

月份	Month	名稱	Name
4 月	April	糧船灣碼頭	Leung Shuen Wan Pier
		藍塘 2	TCS 2
5 月	May	后海灣 F	Deep Bay F
		南沙甫	Nam Shan Po
		塔門碼頭	Tap Mun Pier
7 月	July	鴨洲碼頭	Ap Chau Pier
8 月	August	長洲 D	Cheung Chau D
		屯門入境	IMM TM
9 月	September	飯甌洲	Fan Tsang Chau
		北角消防局東碼頭	North Point FSD East Pier
		海洋公園 1	Ocean Park 1
		三門仔碼頭	Sam Mun Tsai Pier
10 月	October	廈門灣碼頭	Hap Mun Wan Pier
11 月	November	佛堂門	Fat Tong Mun
		九龍灣 2	Kowloon Bay 2
		北航 2	Northern 2
12 月	December	中港 2	CFT 2
		周公島	Sunshine Island
		大澳碼頭	Tai O Pier
		燈洲	Tang Chau

附錄 F – 續
APPENDIX F – Cont'd

E. 本年改進的輔航裝置 (續)

Aids Reprovisioned during the Year (Cont'd)

3. 下列燈浮標及燈航標已更換太陽能電池，用以提高航標的可靠性。
The solar batteries of the light buoys and light beacons listed below were renewed in order to increase reliability.

月份	Month	名稱	Name
1 月	January	爛角咀	Black Point
		黃金海岸 4	Gold Coast 4
		喜靈洲 1	Hei Ling Chau 1
		橋咀排	Kiu Tsui Pai
		九龍灣 4	Kowloon Bay 4
		白芒碼頭	Pak Mong Pier
		白石角碼頭北	Pak Shek Kok Pier N.
		白石角碼頭南	Pak Shek Kok Pier S.
		坪洲碼頭	Peng Chau Pier
		沙龍 E	SLMP E
		南堂尾	Tathong Point
		青衣南 2	Tsing Yi South 2
		屯門	Tuen Mun
		灣仔貨運站 2	Wan Chai PCWA 2
2 月	February	柴灣 B	Chai Wan B
		孤立危險泡	Isolated Danger buoy
		鯉魚門	Lei Yue Mun
		筲箕灣 2	Shau Kei Wan 2
		灣仔貨運站 4	Wan Chai PCWA 4
3 月	March	汾流	Fan Lau
		青龍頭碼頭	Tsing Lung Tau Pier
		東龍洲碼頭	Tung Lung Chau Pier
4 月	April	龍麟咀	Lung Lun Tsui
		燈籠洲	Tang Lung Chau
5 月	May	黃金海岸 1	Gold Coast 1
		嘉道理灣碼頭	Kadoorie Bay Pier
		大尾篤北碼頭	Tai Mei Tuk North Pier
		汀九橋墩 1	Ting Kau Bridge Pier 1
6 月	June	深港西部通道橋墩 4	Hong Kong-Shenzhen Western Corridor Bridge Pier 4
7 月	July	扯輦排	Che Lei Pai

附錄 F – 續
APPENDIX F – Cont'd

E. 本年改進的輔航裝置 (續)

Aids Reprovisioned during the Year (Cont'd)

3. 下列燈浮標及燈航標已更換太陽能電池，用以提高航標的可靠性。(續)
The solar batteries of the light buoys and light beacons listed below were renewed in order to increase reliability. (Cont'd)

月份	Month	名稱	Name
8 月	August	土瓜灣 4	To Kwa Wan 4
		屯門 3	Tuen Mun 3
		機場 1	Airport 1
9 月	September	柴灣 A	Chai Wan A
		青洲	Green Island
		啓德發展碼頭 2	Kai Tak Development Pier 2
		船灣 2	Shuen Wan 2
10 月	October	機場 4	Airport 4
		機場 5	Airport 5
		哥連臣角	Cape Collinson
		石鼓洲	Shek Kwu Chau
11 月	November	中環 10 號碼頭	Central Pier 10
		油麻地 3	Yau Ma Tei 3
12 月	December	中港 4	CFT 4
		啓德發展碼頭 1	Kai Tak Development Pier 1
		青馬橋墩 1	Tsing Ma Bridge Pier 1

4. 下列燈浮標及燈航標的太陽能發電板數目已增加／更換，用以提高航標的可靠性。
The numbers of solar panel of the light buoys and light beacons listed below were increased/replaced to enhance reliability.

月份	Month	名稱	Name
1 月	January	博寮 1	LCS 1
		龍鼓洲	Lung Kwu Chau
3 月	March	東龍洲碼頭	Tung Lung Chau Pier
5 月	May	青衣西	Tsing Yi West
9 月	September	柴灣 A	Chai Wan A

附錄 F – 續
APPENDIX F – Cont'd

F. 輔航燈與輔航設備工場員工比例

Ratio of Aids to Staff of Aids to Navigation Unit Workshop

年份 Year	輔航燈 Aids		輔航設備工場員工 ⁽¹⁾ Staff of Aids to Navigation Unit Workshop ⁽¹⁾		比例 Ratio (c) = (a)/(b)
	數目 Number (a)	變動百分率 Percentage Change	數目 Number (b)	變動百分率 Percentage Change	
2000	468	+1.1%	27	0%	17.3
2001	482	+3.0%	25	-7.4%	19.3
2002	483	+0.2%	27	+8.0%	17.9
2003	497	+2.9%	27	0%	18.4
2004	509	+2.4%	27	0%	18.9
2005	518	+1.8%	25	-7.4%	20.7
2006	529	+2.1%	23	-8.0%	23.0
2007	533	+0.8%	23	0%	23.2
2008	536	+0.6%	24	+4.3%	22.3
2009	540	+0.7%	23	-4.2%	23.5
2010	543	+0.6%	24	+4.3%	22.6
2011	541	-0.4%	23	-4.2%	23.5
2012	539	-0.4%	22	-4.3%	24.5
2013	542	+0.6%	20	-9.1%	27.1
2014	546	+0.7%	20	0%	27.3
2015	544	-0.4%	19	-5.0%	28.6
2016	554	+1.8 %	19	0%	29.2
2017	561	+1.3 %	21	+10.5%	26.7
2018	556	-0.9%	23	+9.5%	24.2
2019	555	-0.2%	22	-4.3%	25.2

註釋： (1) 不包括負責在香港水域範圍內看管繫船設備／檢修浮泡的 5 位員工。

Note: Excluding five staff who are responsible for looking after the mooring facilities/overhaul of buoys within Hong Kong waters.