

香港港口統計年報

2018

Port of Hong Kong  
Statistical Tables



中華人民共和國香港特別行政區海事處  
Marine Department  
Hong Kong Special Administrative Region  
People's Republic of China

# 香港港口統計年報

## PORT OF HONG KONG STATISTICAL TABLES

# 2018

有關本刊物的查詢，請聯絡：

海事處 策劃、發展協調及港口保安部 統計組

地址：香港中環統一碼頭道 38 號

海港政府大樓 23 樓 2307 室

電話：(852) 2852 3659 圖文傳真：(852) 2542 4638

電郵：st-sec@mardep.gov.hk

Enquiries about this publication can be directed to:

**Statistics Section**

**Planning, Development & Port Security Branch**

**Marine Department**

Address: Room 2307, 23/F, Harbour Building,  
38 Pier Road, Central, Hong Kong.

Tel.: (852) 2852 3659 Fax: (852) 2542 4638

E-mail: st-sec@mardep.gov.hk

海事處網站

Website of the Marine Department

<https://www.mardep.gov.hk/>

同心協力，促進卓越海事服務

**We are One in Promoting Excellence in Marine Services**

目錄  
CONTENTS

	頁數 Page No.
<b>註釋</b> <b>EXPLANATORY NOTES</b>	iv - viii
<b>摘要</b> <b>SUMMARY</b>	
<b>2013 年至 2018 年主要港口統計數字</b> <b>Principal Port Statistics for 2013 - 2018</b>	ix
<b>第一部</b> <b>PART I</b>	
<b>港口活動</b> <b>Port Activities</b>	
<i>抵港／離港的船次</i> <i>Vessel Arrivals/Departures</i>	
表 1 2018 年按主要停泊地點分析抵港遠洋輪船的船次 TABLE 1 Ocean Vessel Arrivals by Main Berthing Location, 2018	1
表 2 2018 年按主要停泊地點分析離港遠洋輪船的船次 TABLE 2 Ocean Vessel Departures by Main Berthing Location, 2018	2
表 3 2018 年按船舶類型分析抵港船舶的船次 TABLE 3 Vessel Arrivals by Ship Type, 2018	3
表 4 2018 年按船旗分析抵港船舶的船次 TABLE 4 Vessel Arrivals by Flag, 2018	4 - 5
表 5 2018 年按船旗分析曾停靠香港的船舶數目和淨註冊噸位 TABLE 5 Number and NRT of Vessels Calling Hong Kong by Flag, 2018	6 - 7
表 6 2018 年按選定船舶類型分析離港船舶的平均在港停留時間 TABLE 6 Average Time in Port for Vessels Departing Hong Kong by Selected Ship Type, 2018	8
表 7 2018 年在葵青貨櫃碼頭處理貨櫃的遠洋輪船統計數字 TABLE 7 Statistics on Ocean Vessels with Containers Handled at Kwai Tsing Container Terminals, 2018	9
表 8 2018 年按夏季吃水分析抵港遠洋輪船的船次 TABLE 8 Ocean Vessel Arrivals by Summer Draft, 2018	10
表 9 2018 年按船舶總長度分析抵港遠洋輪船的船次 TABLE 9 Ocean Vessel Arrivals by Vessel Length Overall, 2018	10
表 10 2018 年按主要來港原因分析抵港遠洋輪船的船次 TABLE 10 Ocean Vessel Arrivals by Main Reason of Call, 2018	11
表 11 2018 年按停泊地點及有否目的地分析抵港郵輪船次 TABLE 11 Cruise Arrivals by Berthing Location by Whether the Trip with Destination, 2018	12
表 12 2018 年跨境客運碼頭的抵港及離港航次統計數字 TABLE 12 Statistics on Vessel Arrivals and Departures at Cross-Boundary Ferry Terminals, 2018	13
表 13 2018 年按船舶類型分析香港過境船舶的船次 TABLE 13 Number of Vessel Trips Transit Hong Kong by Ship Type, 2018	14

客運量

*Passenger Throughput*

表 14	2018 年按跨境客運碼頭分析客運量	
TABLE 14	Passenger Throughput by Cross-Boundary Ferry Terminal, 2018	15
表 15	2018 年按航線分析抵港及離港乘客人次	
TABLE 15	Passenger Arrivals and Departures by Route, 2018	16 - 17

港口貨櫃／貨物吞吐量

*Port Container/Cargo Throughput*

表 16	2018 年按主要貨物裝卸地點分析港口貨櫃吞吐量	
TABLE 16	Port Container Throughput by Main Cargo Handling Location, 2018	18
表 17	2018 年按葵青貨櫃碼頭以外的主要貨物裝卸地點分析港口貨櫃吞吐量	
TABLE 17	Port Container Throughput by Main Cargo Handling Location Other than Kwai Tsing Container Terminals, 2018	19
表 18	2018 年按貨物種類及運輸方式劃分的裝卸港口貨物	
TABLE 18	Port Cargo Discharged/Loaded by Cargo Type and Mode of Transport, 2018	20

第二部

港口服務及管理

**PART II**

**Port Services and Control**

表 19	政府繫泊浮泡統計數字	
TABLE 19	Government Mooring Buoys Statistics	21
表 20	按分布地點分析香港私人繫泊設備數目 (截至 2018 年年底)	
TABLE 20	Number of Private Moorings Laid in Hong Kong by Location (as at end 2018)	22 - 23
表 21	碇泊處一覽 (截至 2018 年年底)	
TABLE 21	List of Anchorages (as at end 2018)	24 - 25
表 22	避風塘一覽 (截至 2018 年年底)	
TABLE 22	List of Typhoon Shelters (as at end 2018)	26
表 23	公眾貨物裝卸區一覽 (截至 2018 年年底)	
TABLE 23	List of Public Cargo Working Areas (as at end 2018)	26
表 24	垃圾收集、油污和檢控個案統計數字	
TABLE 24	Refuse Collection, Oil Pollution and Prosecution Statistics	27
表 25	按噸位等級分析香港領牌船隻 (截至 2018 年年底)	
TABLE 25	Hong Kong Licensed Vessels by Tonnage Classification (as at end 2018)	28 - 29

	<u>頁數</u> <u>Page No.</u>
<b>第三部</b>	
<b>PART III</b>	
<b>船舶服務</b>	
<b>Shipping Services</b>	
表 26 船舶安全監督統計數字	
TABLE 26 Ship Safety Statistics	30 - 32
表 27 本地船隻安全／海事工業安全／海事意外統計數字	
TABLE 27 Local Vessels Safety/Marine Industrial Safety/Marine Accidents Statistics	33 - 38
表 28 海員發證、註冊和僱用統計數字	
TABLE 28 Seafarers' Certification, Registration and Employment Statistics	39 - 45
表 29 香港註冊船舶統計數字 (截至 2018 年年底)	
TABLE 29 Statistics on Ships Registered in Hong Kong (as at end 2018)	46 - 47
表 30 政府船隊統計數字	
TABLE 30 Government Fleet Statistics	48
表 31 政府船舶所屬部門及可用率情況 (截至 2018 年年底)	
TABLE 31 Departmental Ownership and Availabilities of Government Vessels (as at end 2018)	49
<b>第四部</b>	
<b>PART IV</b>	
<b>附錄</b>	
<b>Appendices</b>	
附錄 A 海事處組織架構圖 (截至 2018 年年底)	
APPENDIX A Organisation Chart of the Marine Department (as at end 2018)	A1
附錄 B 海事處的編制和實際員額 (截至 2018 年年底)	
APPENDIX B Establishment and Strength of the Marine Department (as at end 2018)	A2 - A6
附錄 C 2018 年海事處訓練組舉辦的課程	
APPENDIX C Training Courses Conducted by Training Section, Marine Department in 2018	A7 - A8
附錄 D 2018 年海事處訪客	
APPENDIX D Visitors to the Marine Department, 2018	A9 - A11
附錄 E 2018 年刊憲的海事及航運法例	
APPENDIX E Maritime and Shipping Legislation Gazetted in 2018	A12 - A15
附錄 F 2018 年輔航設備	
APPENDIX F Aids to Navigation, 2018	A16 - A28

## 1. 簡介

《香港港口統計年報》是香港海事處編製的港口及海事統計資料一覽表。這本年報輯錄以下統計數字和資料：

- 抵港／離港的船次
- 客運量
- 港口貨櫃／貨物吞吐量
- 港口服務及管理
- 船舶服務
- 海事處組織架構圖
  
- 海事處的編制和實際員額
  
- 海事處舉辦的課程
  
- 海事處訪客
- 刊憲的海事及航運法例
  
- 輔航設備

## 2. 資料來源

### *船舶進出口統計數字*

船舶進出口統計數字乃根據船公司、代理人向海事處申報船舶抵達／離開港口的資料時所遞交的申報表 (MD 508 及 MD 510) 編製而成。  
(摘要、表一至十)

### *港口貨櫃吞吐量*

在葵青貨櫃碼頭裝運的貨櫃統計數字，主要由碼頭經營者提供。在葵青貨櫃碼頭以外裝運的遠洋輪船「空」貨櫃統計數字，由海事處根據申報表 MD 508 及 MD 510 編製。所有其他詳細的貨櫃統計數字，皆由政府統計處根據貨物艙單中所列的託運貨物抽取樣本編製而成。  
(摘要、表十六至十七)

## 1. Introduction

The *Port of Hong Kong Statistical Tables* is a collection of Hong Kong Port and Maritime statistical information compiled by the Marine Department. This publication brings together the following statistics and information:

- Vessel Arrivals/Departures
- Passenger Throughput
- Port Container/Cargo Throughput
- Port Services and Control
- Shipping Services
- Organisation Chart of the Marine Department
- Establishment and Strength of the Marine Department
- Training Courses Conducted by the Marine Department
- Visitors to the Marine Department
- Gazetted Maritime and Shipping Legislations
- Aids to Navigation

## 2. Data Sources

### *Vessel Statistics*

Vessel statistics are based on the declaration forms (MD 508 and MD 510) submitted to the Marine Department by shipping companies/agents for declaring arrivals/departures of vessels under their charge. **(Summary Table, Tables 1 – 10)**

### *Port Container Throughput*

Statistics on container throughput handled at Kwai Tsing Container Terminals are mainly obtained from the terminal operators. Statistics on empty containers (ocean) handled at locations other than Kwai Tsing Container Terminals are compiled by the Marine Department based on the declaration forms of MD 508 and MD 510. As for all the other detailed container throughput statistics, they are compiled by the Census and Statistics Department based on a sample of consignments listed in the cargo manifests. **(Summary Table, Tables 16 – 17)**

### **港口貨物吞吐量**

港口貨物吞吐量是由政府統計處根據貨物艙單中所列的託運貨物抽取樣本編製而成。  
(表十八)

### **停泊／貨物裝卸地點**

有關遠洋輪船的主要貨物裝卸地點和主要停泊地點的資料，取自海事處船隻航行監察服務資訊系統所保存的船舶活動報告。(表一至二、七、十六至十七)

## **3. 用語及分類**

### **容量**

在本報告中，船舶的容量是以淨註冊噸位來表示。計算單位為淨註冊噸。淨註冊噸位是由一艘船的船殼內的容量(以立方呎計)，加上在甲板上用以裝載貨物、貯藏品及乘客的空間，再減去船長、高級船員、船員所住的地方、燃料、導航及推進器所佔用的地方。每一淨註冊噸相等於 100 立方呎的容量。

### **停泊／貨物裝卸地點**

停泊／貨物裝卸地點可分為四類：葵青貨櫃碼頭、泊位和倉庫碼頭(包括公眾貨物裝卸區、海運碼頭及啟德郵輪碼頭)、碇泊處和浮泡。

### **港口貨櫃吞吐量**

這是指以標準貨櫃單位計算作為搬運貨物之用的貨櫃數目。一個標準貨櫃單位等同一個二十呎貨櫃的容量。

### **Port Cargo Throughput**

Port cargo statistics are compiled by the Census and Statistics Department based on a sample of consignments listed in the cargo manifests. (Table 18)

### **Berthing/Cargo Handling Location**

Information on the main cargo handling location and main berthing location in respect of ocean vessels are extracted from the trip activity report kept in the Marine Department's Vessel Traffic Services Information System. (Tables 1 – 2, 7, 16 – 17)

## **3. Terms and Classifications**

### **Capacity**

In this report, the capacity of a vessel is expressed in terms of net registered tonnage (NRT). The unit of measurement is net registered ton. NRT is, broadly, the capacity of a ship in cubic feet of the space within the hull, and of the enclosed space above the deck available for cargo, stores and passengers but excluding space used for the accommodation of the master, officers, crew, fuel, navigation and propelling machinery. One net registered ton is equivalent to 100 cubic feet of capacity.

### **Berthing/Cargo Handling Location**

The berthing/cargo handling location can be distinguished into four types: Kwai Tsing Container Terminals, berths and wharves (including public cargo working areas, Ocean Terminal and Kai Tak Cruise Terminal), anchorages, and buoys.

### **Port Container Throughput**

This refers to the number of containers for moving the cargo in TEU terms. A TEU stands for a twenty-foot equivalent unit.

## **船旗**

這是指船舶的國籍，表明其正式註冊的地方。香港在 1992 年正式開始船舶註冊制度。1997 年 7 月 1 日起，香港特別行政區經中央人民政府授權繼續進行船舶註冊，並根據香港特別行政區的法律以「中國香港」的名義頒發有關證件。

## **內河航限**

內河航限是指香港鄰近水域，一般指香港與珠江、大鵬灣及澳門，及其他在廣東和廣西與香港鄰近水域相連的內陸水域。內河航限的精確定義是指以下範圍內的水域：

- 東至東經 114°30'；
- 南至北緯 22°09'；及
- 西至東經 113°31'。

## **船舶類型**

這是指船舶的特定用途，可分為 18 類：運車船、化學品運載船、普通貨船、其他貨船、郵船／渡輪、散裝乾貨船、漁船／魚類加工船、全槽格式貨櫃船、液化氣體運載船、駁船／躉船／貨艇、油輪、礦沙／散貨／油類混用船、其他液體運載船、遊樂船、滾裝卸式船、半貨櫃船、拖船及其他。

## **4. 資料定義**

### **遠洋輪船和內河船隻**

遠洋輪船和內河船隻的定義是根據所停靠港口是否已超越內河航限而定。遠洋輪船是指越過內河航限行駛的船隻，而內河船隻則指在內河航限內行駛的船隻。內河航限的定義在香港法例第313章《船舶及港口管制條例》訂明。(摘要、表一至十、十六至十八)

## **Flag**

This is the nationality of the vessel, indicating where she is officially registered. In Hong Kong, the official vessel registration system was set up in 1992. As from 1 July 1997, the Hong Kong Special Administrative Region is authorised by the Central People's Government to continue to maintain a shipping register and issue related certificates under its legislation, using the name "Hong Kong, China".

## **River Trade Limits**

River trade limits mean the waters in the vicinity of Hong Kong, which broadly include the Pearl River, Mirs Bay and Macao, and other inland waters in Guangdong and Guangxi which are accessible from waters in the vicinity of Hong Kong. The precise definition of river trade limits refers to waters within the following boundaries:

- to the East, meridian 114°30' East;
- to the South, parallel 22°09' North; and
- to the West, meridian 113°31' East.

## **Ship Type**

This refers to the known specific function of the ship and can be distinguished into 18 types: car carrier, chemical carrier/tanker, conventional cargo vessel, other cargo vessel, cruise/ferry, dry bulk carrier, fishing/fish processing vessel, fully cellular container vessel, gas carrier/tanker, lighter/barge/cargo junk, oil tanker, ore/bulk/oil carrier, other fluid carrier, pleasure vessel, roll on/roll off, semi-container vessel, tug and others.

## **4. Data Definitions**

### **Ocean Vessels and River Vessels**

Ocean vessels and river vessels are defined according to whether or not their ports of call are beyond the river trade limits. Ocean vessels refer to vessels operating beyond the river trade limits while river vessels refer to vessels plying within the river trade limits. The interpretation of river trade limits is defined under the Shipping and Port Control Ordinance, Cap. 313, Laws of Hong Kong. (Summary Table, Tables 1 – 10, 16 – 18)



### **停泊／貨物裝卸地點**

船舶在進入香港水域後可能停泊超過一個停泊地點。若船舶來港的主要原因是裝卸貨物，則主要的貨物裝卸地點和主要的停泊地點以葵青貨櫃碼頭、泊位和倉庫碼頭(包括公眾貨物裝卸區)、碇泊處和浮泡排列。若船舶來港的主要原因不是裝卸貨物，主要停泊地點為停留時間最長的地點。(表一至二、七、十六至十七)

### **內河客船**

內河客船的抵港次數是指船隻停泊於港澳碼頭、中國客運碼頭、屯門客運碼頭和海天客運碼頭的次數。屯門客運碼頭於 2012 年 7 月 1 日停止運作及於 2016 年 1 月 28 日復航。由 2017 年開始，內河客船包括在內河航限行駛的郵船。(摘要、表三至五)

## **5. 資料局限**

遠洋客船數字包括在內河航限以外水域行駛的遊樂船。但是，由於有些船主／代理人沒有申報這些船舶的淨註冊噸位資料給海事處，故遠洋客船的淨註冊噸位數字可能輕微低於實際的數字。(摘要、表一至五)

由於不能準確地統計本地領牌遊樂船和漁船來往香港及內河航限內的船次，故這兩類船隻沒有包括在內河船隻統計範圍內。(摘要、表三至六)

### **Berthing/Cargo Handling Location**

A vessel may berth at more than one location after entering into Hong Kong waters. If the main reason of call of the vessel is for loading/discharging cargo, both the main cargo handling location and the main berthing location were presented in the order of Kwai Tsing Container Terminals, berths and wharves (including public cargo working areas), anchorages, and buoys. If the main reason of call is not for loading/discharging cargo, the main berthing location refers to the one with the longest stay. (Tables 1 – 2, 7, 16 – 17)

### **River Passenger Vessels**

The figures on arrivals of river passenger vessels refer to the number of berthings at the Macau Ferry Terminal (MFT), the China Ferry Terminal (CFT), the Tuen Mun Ferry Terminal (TMFT) and SkyPier. The Tuen Mun Ferry Terminal ceased operation on 1 July 2012 and resumed operation on 28 January 2016. As from 2017, river passenger vessels include cruises plying within the river trade limits. (Summary Table, Tables 3 – 5)

## **5. Data Limitations**

The number of ocean passenger vessels includes pleasure vessels plying beyond the river trade limits. However, as some of their owners/agents do not report NRT information to the Marine Department, the total NRT for ocean passenger vessels may be slightly under-reported. (Summary Table, Tables 1 – 5)

As accurate number of trips of locally licensed pleasure vessels and fishing vessels plying between Hong Kong and the river trade limits is not available, these two categories of vessels are not included in the river vessel statistics. (Summary Table, Tables 3 – 6)

## 6. 數字的進位

客運量、港口貨物和貨櫃吞吐量及淨註冊噸位統計數字是計算至最接近的千位。

項目	單位
客運量	千位
港口貨物吞吐量	千公噸
港口貨櫃吞吐量	千個標準貨櫃單位
淨註冊噸位	千噸

由於四捨五入關係，本報告中所列的個別數字加起來可能不等於其總數。另外，變動百分率和比重百分率是以未經進位的數字計算所得。

## 7. 代號

- ( ) 與去年同期比較的變動百分率
- ^ 變動在  $\pm 0.05\%$  之間
- ※ 變動多於 1000%
- @ 比重百分率少於 0.05
- † 少於 500 個標準貨櫃單位／人次／公噸
- # 臨時數字
- \* 修訂數字
- N.A. 沒有數字
- 不適用

海事處  
策劃、發展協調及港口保安部  
統計組

2019 年 5 月

## 6. Rounding of Figures

Statistics on passenger throughput, port cargo and container throughput and NRT are rounded to the nearest thousand.

Items	Units
Passenger Throughput	thousand units
Port Cargo Throughput	'000 tonnes
Port Container Throughput	'000 TEUs
NRT	'000 tons

Figures shown in this report may not add up to the respective totals due to rounding. Furthermore, percentage changes and percentage shares are calculated from unrounded figures.

## 7. Symbols

- ( ) % change over the same period of preceding year
- ^ Change within  $\pm 0.05\%$
- ※ Change more than 1000%
- @ Percentage share less than 0.05
- † Less than 500 TEUs/passenger journeys/tonnes
- # Provisional figures
- \* Revised figures
- N.A. Not available
- Not applicable

Statistics Section  
Planning, Development & Port Security Branch  
Marine Department

May 2019

摘要  
SUMMARY

2013年至2018年主要港口統計數字  
Principal Port Statistics for 2013 – 2018

項目 Item	2013	2017	2018	平均每年變動百分率 Average Annual Rate of Change		
				2017-2018	2013-2018	
<b>1. 抵港船次</b>	<b>Vessel Arrivals</b>	<b>187 540</b>	<b>185 420</b>	<b>174 610</b>	<b>-5.8%</b>	<b>-1.4%</b>
(a) 遠洋輪船	Ocean Vessels	29 915	26 793	25 410	-5.2%	-3.2%
遠洋貨船	Ocean Cargo Vessels	27 076	25 261	24 032	-4.9%	-2.4%
遠洋客船	Ocean Passenger Vessels	2 839	1 532	1 378	-10.1%	-13.5%
(b) 內河船隻	River Vessels	157 625	158 627	149 200	-5.9%	-1.1%
內河貨船	River Cargo Vessels	77 374	76 510	67 647	-11.6%	-2.7%
內河客船	River Passenger Vessels	80 251	82 117	81 553	-0.7%	+0.3%
<b>2. 抵港船舶的淨註冊噸位(千噸)</b>	<b>NRT of Vessel Arrivals ('000 tons)</b>	<b>524 198</b>	<b>540 070</b>	<b>509 417</b>	<b>-5.7%</b>	<b>-0.6%</b>
(a) 遠洋輪船	Ocean Vessels	414 491	420 402	398 747	-5.2%	-0.8%
(b) 內河船隻	River Vessels	109 707	119 668	110 670	-7.5%	+0.2%
<b>3. 港口貨櫃吞吐量(千個標準貨櫃單位)</b>	<b>Port Container Throughput ('000 TEUs)</b>	<b>22 352</b>	<b>20 770</b>	<b>19 596</b>	<b>-5.7%</b>	<b>-2.6%</b>
(i) 按停泊地點分析	By Berthing Location					
葵青貨櫃碼頭	Kwai Tsing Container Terminals	17 118	16 236	15 473	-4.7%	-2.0%
葵青貨櫃碼頭以外	Other than Kwai Tsing Container Terminals	5 234	4 534	4 123	-9.1%	-4.7%
(ii) 按運輸方式分析	By Mode of Transport					
海運	Seaborne	16 009	14 622	13 764	-5.9%	-3.0%
內河	River	6 344	6 149	5 833	-5.1%	-1.7%
<b>4. 港口貨物吞吐量(千公噸)</b>	<b>Port Cargo Throughput ('000 tonnes)</b>	<b>276 055</b>	<b>281 545</b>	<b>258 541</b>	<b>-8.2%</b>	<b>-1.3%</b>
(a) 海運	Seaborne	184 238	176 889	164 550	-7.0%	-2.2%
(b) 河運	River	91 817	104 656	93 991	-10.2%	+0.5%
<b>5. 跨境渡輪<sup>(1)</sup>及郵輪乘客人次 (千乘客人次)</b>	<b>Cross-boundary Ferry<sup>(1)</sup> and Cruise Passenger Journeys (‘000 passenger journeys)</b>	<b>30 131</b>	<b>29 150</b>	<b>28 058</b>	<b>-3.7%</b>	<b>-1.4%</b>
<b>6. 客運碼頭乘客人次<sup>(2)</sup> (千乘客人次)</b>	<b>Passenger Journeys at Marine Ferry Terminals<sup>(2)</sup> (‘000 passenger journeys)</b>	<b>26 215</b>	<b>24 987</b>	<b>23 780</b>	<b>-4.8%</b>	<b>-1.9%</b>
(a) 澳門	Macao	21 067	20 832	19 517	-6.3%	-1.5%
(b) 中國內地	Mainland China	4 965	4 155	4 264	+2.6%	-3.0%
(c) 其他	Others	183	-	-	-	-

註釋： (1) 包括海事處轄下的客運碼頭(包括港澳碼頭、中國客運碼頭及屯門客運碼頭)和海天客運碼頭的跨境渡輪。  
Notes: Including cross-boundary ferries in Marine Ferry Terminals (including Macau Ferry Terminal, China Ferry Terminal and Tuen Mun Ferry Terminal) under the Marine Department and SkyPier.

(2) 指海事處轄下客運碼頭的乘客人次，包括乘搭直升機的乘客人次。屯門客運碼頭於2012年7月1日停止運作及於2016年1月28日復航。其他航線於2015年1月27日停止運作。  
They refer to passenger journeys of Marine Ferry Terminals under the Marine Department. Figures include helicopter passenger journeys. The Tuen Mun Ferry Terminal ceased operation on 1.7.2012 and resumed operation on 28.1.2016. Ferry service to or from other places ceased operation on 27.1.2015.

統計表

Statistical  
Tables

表 1  
TABLE 1

2018 年按主要停泊地點分析抵港遠洋輪船的船次  
Ocean Vessel Arrivals by Main Berthing Location, 2018

主要停泊地點 Main Berthing Location	主要船舶類別 Main Vessel Category								總計 Total			
	貨船 Cargo Vessels				客船 Passenger Vessels							
	抵港船次 No. of Vessel Arrivals		淨註冊噸位 (千噸) NRT ('000)		抵港船次 No. of Vessel Arrivals		淨註冊噸位 (千噸) NRT ('000)		抵港船次 No. of Vessel Arrivals		淨註冊噸位 (千噸) NRT ('000)	
	(%)		(%)		(%)		(%)		(%)		(%)	
葵青貨櫃碼頭 Kwai Tsing Container Terminals	10 540	(-1.3)	254 485	(-0.6)	0	(-)	0	(-)	10 540	(-1.3)	254 485	(-0.6)
泊位和倉庫碼頭 <sup>(1)</sup> Berths and Wharves <sup>(1)</sup>	2 225	(+15.0)	16 676	(-2.7)	710	(+13.1)	20 789	(-7.9)	2 935	(+14.6)	37 465	(-5.7)
碇泊處 Anchorage	11 231	(-10.9)	102 485	(-14.1)	53	(-59.2)	66	(-82.0)	11 284	(-11.4)	102 552	(-14.3)
浮泡 Buoys	36	(-29.4)	147	(-27.4)	615	(-20.5)	4 099	(-17.0)	651	(-21.1)	4 246	(-17.4)
<b>總計 Total</b>	<b>24 032</b>	<b>(-4.9)</b>	<b>373 793</b>	<b>(-4.8)</b>	<b>1 378</b>	<b>(-10.1)</b>	<b>24 954</b>	<b>(-10.5)</b>	<b>25 410</b>	<b>(-5.2)</b>	<b>398 747</b>	<b>(-5.2)</b>

註釋： (1) 包括公眾貨物裝卸區、海運碼頭及啟德郵輪碼頭。  
Note: Including public cargo working areas, Ocean Terminal and Kai Tak Cruise Terminal.

表 2  
TABLE 2

2018 年按主要停泊地點分析離港遠洋輪船的船次  
Ocean Vessel Departures by Main Berthing Location, 2018

主要停泊地點 Main Berthing Location	主要船舶類別 Main Vessel Category								總計 Total			
	貨船 Cargo Vessels				客船 Passenger Vessels							
	離港船次 No. of Vessel Departures		淨註冊噸位 (千噸) NRT ('000)		離港船次 No. of Vessel Departures		淨註冊噸位 (千噸) NRT ('000)		離港船次 No. of Vessel Departures		淨註冊噸位 (千噸) NRT ('000)	
	(%)		(%)		(%)		(%)		(%)		(%)	
葵青貨櫃碼頭 Kwai Tsing Container Terminals	10 549	(-1.3)	253 911	(-1.2)	1	(-)	133	(-)	10 550	(-1.3)	254 044	(-1.1)
泊位和倉庫碼頭 <sup>(1)</sup> Berths and Wharves <sup>(1)</sup>	2 304	(+17.0)	17 401	(+1.0)	700	(+11.3)	20 238	(-8.7)	3 004	(+15.6)	37 639	(-4.4)
碇泊處 Anchorage	10 821	(-8.4)	103 447	(-8.4)	80	(-48.7)	200	(-18.0)	10 901	(-8.9)	103 647	(-8.4)
浮泡 Buoys	27	(-28.9)	114	(-25.8)	614	(-20.6)	4 094	(-17.0)	641	(-21.0)	4 207	(-17.3)
<b>總計 Total</b>	<b>23 701</b>	<b>(-3.3)</b>	<b>374 872</b>	<b>(-3.2)</b>	<b>1 395</b>	<b>(-10.5)</b>	<b>24 664</b>	<b>(-9.8)</b>	<b>25 096</b>	<b>(-3.7)</b>	<b>399 537</b>	<b>(-3.6)</b>

註釋： (1) 包括公眾貨物裝卸區、海運碼頭及啟德郵輪碼頭。  
Note: Including public cargo working areas, Ocean Terminal and Kai Tak Cruise Terminal.

表3  
TABLE 3

2018年按船舶類型分析抵港船舶的船次  
Vessel Arrivals by Ship Type, 2018

船舶類型 Ship Type	遠洋輪船 Ocean Vessels		內河船隻 River Vessels		總計 Total	
	抵港船次 No. of Vessel Arrivals	比重 百分率 Percentage Share	抵港船次 No. of Vessel Arrivals	比重 百分率 Percentage Share	抵港船次 No. of Vessel Arrivals	比重 百分率 Percentage Share
	(%)		(%)		(%)	
運車船 Car Carrier	212 (+3.9)	0.8%	10 (-44.4)	@	222 (0)	0.1%
化學品運載船 Chemical Carrier/Tanker	555 (+26.1)	2.2%	164 (-1.2)	0.1%	719 (+18.6)	0.4%
普通貨船 Conventional Cargo Vessel	1 927 (-3.7)	7.6%	5 292 (-16.7)	3.5%	7 219 (-13.6)	4.1%
郵船／渡輪 Cruise/Ferry	1 153 (-13.2)	4.5%	81 553 (-0.7)	54.7%	82 706 (-0.9)	47.4%
散裝乾貨船 Dry Bulk Carrier	3 326 (-7.8)	13.1%	10 655 (-12.3)	7.1%	13 981 (-11.3)	8.0%
漁船／魚類加工船 Fishing/Fish Processing Vessel	351 (+5.1)	1.4%	N.A.	N.A.	351 (+5.1)	0.2%
全槽格式貨櫃船 Fully Cellular Container Vessel	15 853 (-5.8)	62.4%	38 169 (-10.9)	25.6%	54 022 (-9.4)	30.9%
液化氣體運載船 Gas Carrier/Tanker	366 (+10.2)	1.4%	170 (+13.3)	0.1%	536 (+11.2)	0.3%
駁船／躉船／貨艇 Lighter/Barge/Cargo Junk	29 (+3.6)	0.1%	1 278 (-29.0)	0.9%	1 307 (-28.5)	0.7%
油輪 Oil Tanker	863 (+5.2)	3.4%	433 (-21.1)	0.3%	1 296 (-5.3)	0.7%
礦沙／散貨／油類混用船 Ore/Bulk/Oil (OBO) Carrier	23 (-20.7)	0.1%	2 (-77.8)	@	25 (-34.2)	@
遊樂船 Pleasure Vessel	225 (+10.8)	0.9%	N.A.	N.A.	225 (+10.8)	0.1%
滾裝卸式船 Roll On/Roll Off	121 (-17.7)	0.5%	28 (+75.0)	@	149 (-8.6)	0.1%
半貨櫃船 Semi-container Vessel	80 (-41.2)	0.3%	9 626 (-7.7)	6.5%	9 706 (-8.1)	5.6%
拖船 Tug	120 (-4.8)	0.5%	1 598 (-13.9)	1.1%	1 718 (-13.3)	1.0%
其他 Others	206 (-9.6)	0.8%	222 (+23.3)	0.1%	428 (+4.9)	0.2%
<b>總計 Total</b>	<b>25 410 (-5.2)</b>	<b>100.0%</b>	<b>149 200 (-5.9)</b>	<b>100.0%</b>	<b>174 610 (-5.8)</b>	<b>100.0%</b>

註釋： 2018年沒有「其他貨船」及「其他液體運載船」的抵港船次。

Note: There was no vessel arrival of "other cargo vessel" and "other fluid carrier" in 2018.

表 4  
TABLE 4

2018 年按船旗分析抵港船舶的船次  
Vessel Arrivals by Flag, 2018

船旗 Flag	遠洋輪船 Ocean Vessels				內河船隻 River Vessels				總計 Total			
	抵港船次 No. of Vessel Arrivals		淨註冊噸位 (千噸) NRT ('000)		抵港船次 No. of Vessel Arrivals		淨註冊噸位 (千噸) NRT ('000)		抵港船次 No. of Vessel Arrivals		淨註冊噸位 (千噸) NRT ('000)	
		(%)		(%)		(%)		(%)		(%)		(%)
安提瓜和巴布達 Antigua and Barbuda	351	(-31.3)	2 217	(-35.5)	48	(+20.0)	275	(+11.4)	399	(-27.6)	2 493	(-32.4)
巴哈馬 Bahamas	685	(-16.4)	21 177	(-16.6)	77	(+6.9)	7 121	(+6.8)	762	(-14.5)	28 298	(-11.7)
伯利茲 Belize	157	(+8.3)	489	(+25.2)	24	(+4.3)	54	(-12.1)	181	(+7.7)	543	(+20.1)
中國 China	4 846	(-9.2)	15 981	(+15.1)	88 853	(-8.7)	65 005	(-7.7)	93 699	(-8.7)	80 986	(-4.0)
塞浦路斯 Cyprus	513	(-20.0)	8 429	(-17.6)	38	(+31.0)	665	(+7.3)	551	(-17.8)	9 094	(-16.2)
丹麥 Denmark	231	(+115.9)	11 780	(+113.1)	8	(-11.1)	332	(-0.5)	239	(+106.0)	12 112	(+106.7)
德國 Germany	189	(-1.0)	7 244	(-2.9)	10	(-23.1)	384	(-1.8)	199	(-2.5)	7 627	(-2.9)
希臘 Greece	70	(+18.6)	2 719	(+27.4)	9	(+28.6)	318	(+13.5)	79	(+19.7)	3 038	(+25.8)
中國香港 Hong Kong, China	3 234	(-6.0)	71 981	(-2.2)	58 694	(-1.7)	16 815	(-3.6)	61 928	(-1.9)	88 797	(-2.5)
意大利 Italy	64	(-26.4)	1 838	(-34.5)	7	(-69.6)	168	(-82.0)	71	(-35.5)	2 006	(-46.4)
牙買加 Jamaica	281	(-17.8)	1 490	(-7.9)	0	(-100.0)	0	(-100.0)	281	(-18.1)	1 490	(-7.9)
日本 Japan	88	(-17.8)	3 862	(-0.7)	0	(-100.0)	0	(-100.0)	88	(-19.3)	3 862	(-1.1)
韓國 Republic of Korea	711	(-5.8)	6 094	(-13.6)	47	(-13.0)	255	(+5.1)	758	(-6.3)	6 350	(-13.0)
利比里亞 Liberia	2 153	(-10.7)	47 897	(-15.4)	189	(-11.3)	3 405	(-27.5)	2 342	(-10.7)	51 302	(-16.3)
馬耳他 Malta	760	(-3.8)	26 651	(+6.2)	52	(-3.7)	1 262	(+4.6)	812	(-3.8)	27 914	(+6.1)
馬紹爾群島 Marshall Islands	1 590	(+1.9)	31 571	(-2.0)	161	(+21.1)	2 984	(+27.8)	1 751	(+3.4)	34 556	( ^ )
挪威 Norway	56	(+40.0)	820	(+49.1)	18	(-5.3)	278	(-6.3)	74	(+25.4)	1 097	(+29.7)
巴拿馬 Panama	4 116	(-2.3)	59 682	(-5.5)	464	(+0.7)	4 541	(-7.4)	4 580	(-2.0)	64 222	(-5.6)



表 4 – 續  
TABLE 4 – Cont'd

船旗 Flag	遠洋輪船 Ocean Vessels				內河船隻 River Vessels				總計 Total			
	抵港船次 No. of Vessel Arrivals		淨註冊噸位 (千噸) NRT ('000)		抵港船次 No. of Vessel Arrivals		淨註冊噸位 (千噸) NRT ('000)		抵港船次 No. of Vessel Arrivals		淨註冊噸位 (千噸) NRT ('000)	
	(%)	(%)	(%)	(%)	(%)	(%)	(%)	(%)	(%)	(%)	(%)	
菲律賓 Phillippine	54	(-25.0)	418	(-15.2)	3	(-50.0)	29	(-48.5)	57	(-26.9)	447	(-18.6)
葡萄牙 Portugal	488	(+50.6)	9 413	(+3.9)	31	(+55.0)	484	(-39.6)	519	(+50.9)	9 896	(+0.3)
塞拉利昂 Sierra Leone	203	(+58.6)	288	(+75.9)	6	(-14.3)	14	(+19.9)	209	(+54.8)	302	(+72.1)
新加坡 Singapore	2 427	(+3.4)	40 633	(-7.8)	207	(+4.5)	3 122	(-7.7)	2 634	(+3.5)	43 755	(-7.8)
台灣 Taiwan	577	(-2.2)	3 640	(-2.1)	42	(-14.3)	472	(-10.2)	619	(-3.1)	4 112	(-3.1)
泰國 Thailand	201	(-19.9)	1 189	(-24.6)	36	(+89.5)	288	(+131.3)	237	(-12.2)	1 476	(-13.2)
多哥 Togo	70	(+16.7)	137	(+15.1)	4	(0)	11	(-5.8)	74	(+15.6)	148	(+13.1)
英國 United Kingdom	459	(-3.2)	14 870	(-6.1)	38	(-46.5)	1 180	(-53.3)	497	(-8.8)	16 050	(-12.6)
越南 Vietnam	370	(+3.6)	1 800	(+3.4)	48	(+140.0)	210	(+180.5)	418	(+10.9)	2 010	(+10.7)
其他 <sup>(1)</sup> Others <sup>(1)</sup>	466	(-26.8)	4 436	(-48.4)	86	(-26.5)	997	(-0.3)	552	(-26.8)	5 433	(-43.3)
<b>總計 Total</b>	<b>25 410</b>	<b>(-5.2)</b>	<b>398 747</b>	<b>(-5.2)</b>	<b>149 200</b>	<b>(-5.9)</b>	<b>110 670</b>	<b>(-7.5)</b>	<b>174 610</b>	<b>(-5.8)</b>	<b>509 417</b>	<b>(-5.7)</b>

註釋： (1) 指該年所有遠洋輪船抵港船次總數少於 50 船次的旗號。

Note: Referring to those flags of which the total number of ocean vessel arrivals being less than 50 during the year.

表 5  
TABLE 5

2018 年按船旗分析曾停靠香港的船舶數目和淨註冊噸位  
Number and NRT of Vessels Calling Hong Kong by Flag, 2018

船旗 Flag	遠洋輪船 <sup>(1)</sup> Ocean Vessels <sup>(1)</sup>				內河船隻 <sup>(1)</sup> River Vessels <sup>(1)</sup>			
	船舶數目 Number of Vessels		淨註冊噸位 (千噸) NRT ('000)		船舶數目 Number of Vessels		淨註冊噸位 (千噸) NRT ('000)	
		(%)		(%)		(%)		(%)
安提瓜和巴布達 Antigua and Barbuda	44	(-30.2)	340	(-26.2)	13	(-40.9)	109	(-21.2)
巴哈馬 Bahamas	99	(-22.7)	2 365	(-24.6)	23	(-8.0)	543	(-36.1)
伯利茲 Belize	75	(+19.0)	210	(+54.8)	21	(+23.5)	48	(+8.8)
中國 China	520	(+10.2)	5 031	(+17.9)	1 514	(-3.8)	3 477	(+8.1)
塞浦路斯 Cyprus	105	(+5.0)	2 454	(+2.9)	27	(+17.4)	533	(+20.0)
丹麥 Denmark	80	(+110.5)	3 968	(+110.1)	8	(-11.1)	332	(-0.5)
德國 Germany	40	(-13.0)	1 575	(-19.7)	8	(-20.0)	335	(-6.7)
希臘 Greece	41	(+7.9)	1 594	(+14.8)	9	(+28.6)	318	(+13.5)
中國香港 Hong Kong, China	885	(-2.2)	19 475	(-2.0)	522	(-4.6)	3 343	(-6.2)
意大利 Italy	24	(0)	700	(-6.7)	5	(-28.6)	140	(-49.8)
日本 Japan	39	(+11.4)	1 258	(+69.0)	0	(-100.0)	0	(-100.0)
韓國 Republic of Korea	124	(+12.7)	972	(-3.4)	33	(-10.8)	196	(+7.7)
利比里亞 Liberia	557	(-0.7)	15 094	(-7.6)	124	(-1.6)	2 514	(-24.8)
馬來西亞 Malaysia	22	(-4.3)	65	(-76.9)	5	(-16.7)	27	(-76.8)
馬耳他 Malta	217	(-7.7)	7 277	(-6.2)	48	(+14.3)	1 233	(+31.0)
馬紹爾群島 Marshall Islands	498	(+0.6)	11 229	(-2.4)	123	(+18.3)	2 393	(+27.2)
挪威 Norway	29	(+11.5)	590	(+34.9)	17	(0)	252	(-6.4)
巴拿馬 Panama	1 132	(-7.5)	19 625	(-13.0)	256	(-3.4)	3 233	(-12.0)

表 5 – 續  
TABLE 5 – Cont'd

船旗 Flag	遠洋輪船 <sup>(1)</sup> Ocean Vessels <sup>(1)</sup>				內河船隻 <sup>(1)</sup> River Vessels <sup>(1)</sup>			
	船舶數目 Number of Vessels		淨註冊噸位 (千噸) NRT ('000)		船舶數目 Number of Vessels		淨註冊噸位 (千噸) NRT ('000)	
		(%)		(%)		(%)		(%)
菲律賓 Philippines	26	(+4.0)	176	(-0.4)	3	(-50.0)	29	(-48.5)
葡萄牙 Portugal	79	(+25.4)	2 290	(+21.5)	19	(-5.0)	330	(-58.9)
塞拉利昂 Sierra Leone	36	(+38.5)	115	(+146.4)	5	(+25.0)	11	(+29.9)
新加坡 Singapore	496	(-5.0)	10 594	(-14.2)	128	(+28.0)	2 296	(+23.4)
台灣 Taiwan	44	(-8.3)	559	(-18.0)	9	(0)	168	(+45.8)
泰國 Thailand	36	(+2.9)	231	(-1.7)	8	(+14.3)	50	(+65.7)
多哥 Togo	23	(+21.1)	50	(+32.6)	3	(-25.0)	8	(-37.0)
英國 United Kingdom	115	(-8.7)	4 491	(-8.5)	28	(0)	931	(-11.5)
越南 Vietnam	120	(+14.3)	656	(+16.3)	34	(+88.9)	123	(+70.7)
其他 <sup>(2)</sup> Others <sup>(2)</sup>	235	(-9.3)	2 772	(-20.5)	62	(-4.6)	786	(+5.7)
<b>總計 Total</b>	<b>5 741</b>	<b>(-1.3)</b>	<b>115 754</b>	<b>(-4.5)</b>	<b>3 055</b>	<b>(-1.5)</b>	<b>23 758</b>	<b>(-3.7)</b>

註釋： (1) 此表內的遠洋輪船及內河船隻數目不能直接地加在一起，因為同一艘船舶在一年內不同的抵港旅程可能會被歸納於遠洋及內河船舶類別，視乎該抵港旅程是否超越內河航限而定。

Notes: The number of ocean vessels and river vessels in this table cannot be grouped together by simple addition as the same vessel may be classified as ocean and river vessel in different trips during a year depending on whether her trips to Hong Kong were beyond the river trade limits or not.

(2) 指該年所有遠洋輪船抵港船舶總數少於 20 船舶的旗號。

Referring to those flags of which the total number of ocean vessels calling Hong Kong being less than 20 during the year.

表 6  
TABLE 6

2018 年按選定船舶類型分析離港船舶的平均在港停留時間  
Average Time in Port for Vessels Departing Hong Kong by Selected Ship Type, 2018

小時  
Hours

船舶類型 Ship Type	遠洋輪船 Ocean Vessels	內河船隻 River Vessels	總計 Total
<b>所有船舶類型 All Ship Types</b>	<b>24</b>	<b>41<sup>(1)</sup></b>	<b>37<sup>(1)</sup></b>
當中： Of Which:			
全槽格式貨櫃船 Fully Cellular Container Vessel	18	35	30
散裝乾貨船 Dry Bulk Carrier	26	49	44
半貨櫃船 Semi-container Vessel	47	41	41
普通貨船 Conventional Cargo Vessel	32	31	31
拖船 Tug	179	126	130
駁船／躉船／貨艇 Lighter/Barge/Cargo Junk	117	92	92
油輪 Oil Tanker	36	65	42

註釋： (1) 不包括郵船／渡輪、漁船／魚類加工船及遊樂船的內河船隻。

Note: Excluding cruises/ferries, fishing/fish processing vessels and pleasure vessels under river vessels.

表 7  
TABLE 7

2018 年在葵青貨櫃碼頭處理貨櫃的遠洋輪船統計數字  
Statistics on Ocean Vessels with Containers Handled at Kwai Tsing Container Terminals, 2018

項目 Item	抵港船次 No. of Vessel Arrivals	比重百分率 Percentage Share
在葵青貨櫃碼頭處理貨櫃的遠洋輪船 Ocean Vessels with Containers Handled at Kwai Tsing Container Terminals	10 499 (-1.3)	100.0%
- 按載重噸分析 Analysed by Deadweight Tonnage (DWT)		
< 10 000	317 (-7.3)	3.0%
10 000 - < 20 000	1 669 (-2.4)	15.9%
20 000 - < 30 000	2 471 (+7.8)	23.5%
30 000 - < 40 000	1 435 (+1.8)	13.7%
40 000 - < 50 000	253 (-16.8)	2.4%
50 000 - < 100 000	2 399 (-14.4)	22.8%
100 000 - < 120 000	1 010 (-0.8)	9.6%
≥ 120 000	945 (+25.7)	9.0%
- 按主要貿易地區／國家分析(根據所申報的上一個停靠港口) Analysed by Principal Trading Region/Country (Based on Previous Port Reported)		
亞洲 Asia	9 586 (-0.7)	91.3%
- 中國內地 - Mainland China	2 085 (-0.9)	19.9%
- 台灣 - Taiwan	1 952 (-1.8)	18.6%
- 越南 - Vietnam	1 288 (-9.3)	12.3%
- 新加坡 - Singapore	1 136 (-9.6)	10.8%
- 泰國 - Thailand	877 (+10.0)	8.4%
- 韓國 - Republic of Korea	718 (+6.1)	6.8%
- 馬來西亞 - Malaysia	512 (+15.3)	4.9%
- 日本 - Japan	401 (+7.5)	3.8%
- 菲律賓 - Philippines	390 (-2.0)	3.7%
- 印度尼西亞 - Indonesia	144 (+27.4)	1.4%
- 其他 - Others	83 (+1.2)	0.8%
北美洲 North America	326 (+3.2)	3.1%
中美洲、南美洲 Central and South America	209 (+3.5)	2.0%
大洋洲 Oceania	163 (-11.4)	1.6%
西歐 Western Europe	64 (-34.0)	0.6%
其他 Others	151 (-17.9)	1.4%
平均在香港港口停留時間 (包括停留在葵青貨櫃碼頭以外的時間)(小時) Average Time in Hong Kong Port (Including Time Outside Kwai Tsing Container Terminals) (Hours)	14.2	

表 8  
TABLE 8

2018 年按夏季吃水分析抵港遠洋輪船的船次  
Ocean Vessel Arrivals by Summer Draft, 2018

夏季吃水 (米) Summer Draft (m)	抵港船次 No. of Vessel Arrivals		比重百分率 Percentage Share
		(%)	
< 4	2 967	(-7.2)	11.7%
4 – < 6	2 182	(-10.1)	8.6%
6 – < 8	2 601	(+1.6)	10.2%
8 – < 10	6 564	(-2.1)	25.8%
10 – < 12	3 331	(-5.4)	13.1%
12 – < 14	3 613	(-5.5)	14.2%
14 – < 16	3 669	(-8.8)	14.4%
16 – < 18	149	(-23.6)	0.6%
≥ 18	334	(-0.6)	1.3%
<b>總計 Total</b>	<b>25 410</b>	<b>(-5.2)</b>	<b>100.0%</b>

表 9  
TABLE 9

2018 年按船舶總長度分析抵港遠洋輪船的船次  
Ocean Vessel Arrivals by Vessel Length Overall, 2018

船舶總長度 (米) Vessel Length Overall (m)	抵港船次 No. of Vessel Arrivals		比重百分率 Percentage Share
		(%)	
< 30	347	(+13.0)	1.4%
30 – < 50	416	(+4.3)	1.6%
50 – < 100	4 632	(-11.9)	18.2%
100 – < 150	4 364	(-4.5)	17.2%
150 – < 200	7 601	(-1.3)	29.9%
200 – < 250	2 937	(+0.1)	11.6%
250 – < 300	2 723	(-9.9)	10.7%
300 – < 350	1 453	(-19.1)	5.7%
≥ 350	937	(+16.5)	3.7%
<b>總計 Total</b>	<b>25 410</b>	<b>(-5.2)</b>	<b>100.0%</b>

表 10  
TABLE 10

2018 年按主要來港原因分析抵港遠洋輪船的船次  
Ocean Vessel Arrivals by Main Reason of Call, 2018

主要來港原因 Main Reason of Call	抵港船次 No. of Vessel Arrivals		比重百分率 Percentage Share
		(%)	
裝貨、卸貨 Loading and Discharging Cargo	15 958	(-6.2)	62.8%
補充燃料 Bunkers	3 110	(+6.6)	12.2%
卸貨 Discharging Cargo	1 758	(+32.4)	6.9%
交換文件 Switch Documents	1 273	(-20.5)	5.0%
旅遊 (郵輪) Tour (Cruise)	1 145	(-13.5)	4.5%
船上用品補給 (燃料除外) Taking Stores (Except Bunkers)	890	(-0.9)	3.5%
裝貨 Loading Cargo	402	(+3.3)	1.6%
消遣／運動 (遊艇) Pleasure/Sports (Pleasure Vessels)	222	(+10.4)	0.9%
緊急修理、非例行入乾塢 Emergency Repair, Non-routine Dry Docking	39	(+77.3)	0.2%
船員變動 Change of Crew	38	(-2.6)	0.1%
例行入乾塢 Routine Dry Docking	8	(-61.9)	@
其他 Others	567	(-45.1)	2.2%
<b>總計 Total</b>	<b>25 410</b>	<b>(-5.2)</b>	<b>100.0%</b>

**表 11**  
**TABLE 11**

**2018 年按停泊地點及有否目的地分析抵港郵輪船次<sup>(1)</sup>**  
**Cruise Arrivals<sup>(1)</sup> by Berthing Location by Whether the Trip with Destination, 2018**

停泊地點 Berthing Location	有目的地 With Destination		公海 <sup>(2)</sup> High Seas <sup>(2)</sup>		總計 Total	
	抵港 郵輪船次 No. of Cruise Arrivals	變動百分率 Percentage Change	抵港 郵輪船次 No. of Cruise Arrivals	變動百分率 Percentage Change	抵港 郵輪船次 No. of Cruise Arrivals	變動百分率 Percentage Change
海運大廈 Ocean Terminal	37	-36.2%	361	+1.7%	398	-3.6%
啟德郵輪碼頭 Kai Tak Cruise Terminal	118	-9.9%	53	-7.0%	171	-9.0%
浮泡和碇泊處 Buoys and Anchorages	1	-	624	-20.4%	625	-20.3%
其他 <sup>(3)</sup> Others <sup>(3)</sup>	1	-	3	-50.0%	4	-33.3%
<b>總計 Total</b>	<b>157</b>	<b>-16.9%</b>	<b>1 041</b>	<b>-13.4%</b>	<b>1 198</b>	<b>-13.9%</b>

註釋： (1) 不包括非載客的船次，例如緊急修理、補充燃料等。

Notes: Excluding non-passenger carrying trips, e.g. emergency repair, bunkers, etc.

(2) 根據海商法，公海的定義是指不屬於任何國家領海或內水的海域。

According to Maritime Law, High Seas is defined as the waters lying outside the territorial waters of any countries.

(3) 包括私人泊位和倉庫碼頭、船塢及葵青貨櫃碼頭。

Including private berths and wharves, docks, and Kwai Tsing Container Terminals.



表 12  
TABLE 12

2018 年跨境客運碼頭<sup>(1)</sup>的抵港及離港航次統計數字<sup>(2)</sup>  
Statistics on Vessel Arrivals and Departures at Cross-Boundary Ferry Terminals<sup>(1) (2)</sup>, 2018

來往 <sup>(3)</sup> From/To <sup>(3)</sup>	運輸工具類別 Type of Carrier	提供服務的船隻/ 直升機數目 No. of Vessels/ Helicopters in Service		抵港 Arrivals				離港 Departures			
				航次 No. of Trips		淨註冊噸位 (千噸) NRT ('000)		航次 No. of Trips		淨註冊噸位(千噸) NRT ('000)	
			(%)	(%)		(%)		(%)		(%)	
澳門 Macao	雙體船 Catamaran	36	(0)	40 889	(+1.7)	8 863	(+2.0)	41 716	(-0.1)	9 040	(+0.1)
	噴射飛翼船 Jetfoil	11	(0)	13 644	(-7.0)	1 281	(-7.5)	13 735	(-7.4)	1 290	(-7.9)
	直升機 Helicopter	6	(0)	6 195	(+3.7)	-	(-)	6 195	(+3.7)	-	(-)
<b>小計 - 澳門 Sub-total - Macao</b>				<b>60 728</b>	<b>(-0.2)</b>	<b>10 144</b>	<b>(+0.7)</b>	<b>61 646</b>	<b>(-1.5)</b>	<b>10 330</b>	<b>(-1.0)</b>
斗門 Doumen	雙體船 Catamaran	1	(-)	20	(-)	3	(-)	20	(-)	3	(-)
高明 Gaoming	雙體船 Catamaran	2	(+100.0)	236	(-30.2)	41	(-30.6)	235	(-30.1)	41	(-30.5)
虎門 Humen	雙體船 Catamaran	4	(+33.3)	1 811	(+0.2)	246	(-6.7)	1 805	(+0.8)	245	(-6.2)
江門 Jiangmen	雙體船 Catamaran	1	(0)	131	(-67.1)	16	(-70.7)	129	(-67.3)	16	(-70.9)
蓮花山 Lianhuashan	雙體船 Catamaran	8	(-20.0)	2 402	(-4.7)	394	(-6.1)	2 485	(-1.3)	408	(-2.7)
南沙 Nansha	雙體船 Catamaran	7	(0)	358	(-25.4)	60	(-31.3)	360	(-24.7)	60	(-30.7)
蛇口 Shekou	雙體船 Catamaran	19	(+26.7)	8 022	(+2.2)	1 052	(+5.2)	7 952	(+1.7)	1 042	(+4.7)
深圳 Shenzhen	雙體船 Catamaran	5	(-16.7)	1 470	(-15.0)	228	(-17.9)	1 445	(-12.5)	224	(-15.4)
順德 Shunde	雙體船 Catamaran	3	(-25.0)	1 712	(-3.0)	291	(-2.8)	1 730	(-2.3)	294	(-2.1)
中山 Zhongshan	雙體船 Catamaran	9	(-10.0)	4 202	(-4.2)	710	(-5.8)	4 136	(-4.1)	699	(-5.7)
珠海 Zhuhai	雙體船 Catamaran	12	(-7.7)	6 603	(+11.7)	1 044	(+14.2)	6 957	(+11.5)	1 083	(+14.0)
<b>小計 - 內河港口 Sub-total - River Trade Ports</b>				<b>26 967</b>	<b>(-0.8)</b>	<b>4 087</b>	<b>(-1.1)</b>	<b>27 254</b>	<b>(-0.2)</b>	<b>4 117</b>	<b>(-0.4)</b>
<b>總計 Total</b>				<b>87 695</b>	<b>(-0.4)</b>	<b>14 231</b>	<b>(+0.2)</b>	<b>88 900</b>	<b>(-1.1)</b>	<b>14 447</b>	<b>(-0.8)</b>

註釋： (1) 指海事處轄下的客運碼頭(包括港澳碼頭、中國客運碼頭及屯門客運碼頭)和海天客運碼頭。

Notes: It refers to Marine Ferry Terminals (including Macau Ferry Terminal, China Ferry Terminal and Tuen Mun Ferry Terminal) under the Marine Department and SkyPier.

(2) 數字不包括非載客的跨境渡輪船次。  
Non-passenger carrying trips of cross-boundary ferry are excluded.

(3) 指抵港航程的起點站或離港航程的終點站。  
It refers to the origin of arrival trip or the destination of departure trip.

資料來源： 海事處客運碼頭組及香港國際機場客運碼頭服務有限公司

Data Sources: Ferry Terminals Section, Marine Department and Hong Kong International Airport Ferry Terminal Services Ltd.

表 13  
TABLE 13

2018 年按船舶類型分析香港過境船舶的船次<sup>(1)</sup>  
Number of Vessel Trips Transit Hong Kong<sup>(1)</sup> by Ship Type, 2018

船舶類型 Ship Type	過境船次 Vessel Trips Transit Hong Kong	變動百分率 Percentage Change	淨註冊噸位 (千噸) NRT ('000)	變動百分率 Percentage Change
全槽格式貨櫃船 Fully Cellular Container Vessel	16 338	+0.4%	565 743	-1.3%
散裝乾貨船 Dry Bulk Carrier	276	+19.5%	4 101	-18.9%
普通貨船 Conventional Cargo Vessel	182	-13.7%	790	-20.2%
拖船 Tug	145	+21.8%	100	+22.8%
油輪 Oil Tanker	95	-12.8%	652	-57.5%
化學品運載船 Chemical Carrier/Tanker	87	-23.0%	421	-23.4%
其他 <sup>(2)</sup> Others <sup>(2)</sup>	395	+35.3%	7 398	-8.3%
<b>總計 Total</b>	<b>17 518</b>	<b>+0.9%</b>	<b>579 204</b>	<b>-1.7%</b>

註釋： (1) 只包括曾提供到達前通知書的過境香港水域船舶的船次。

Notes: Including only those vessel trips transit Hong Kong waters with Pre-arrival Notification.

(2) 包括液化氣體運載船。

Including gas carriers/tankers.

資料來源： 海事處船隻航行監察中心

Data Source: Vessel Traffic Centre, Marine Department

表 14  
TABLE 14

2018 年按跨境客運碼頭分析客運量  
Passenger Throughput by Cross-Boundary Ferry Terminal, 2018

千 ('000)

來往 From/To	澳門 Macao	內河港口 River Trade Ports	總計 Total
	(%)	(%)	(%)
海事處轄下客運碼頭 <sup>(1)</sup> Marine Ferry Terminals <sup>(1)</sup>	19 517 (-6.3)	4 264 (+2.6)	23 780 (-4.8)
港澳碼頭 <sup>(2)</sup> Macau Ferry Terminal <sup>(2)</sup>	14 960 (-6.8)	1 281 (+6.8)	16 241 (-5.9)
中國客運碼頭 China Ferry Terminal	3 831 (-6.4)	2 977 (+0.9)	6 808 (-3.3)
屯門客運碼頭 Tuen Mun Ferry Terminal	726 (+5.5)	5 (+30.1) <sup>(3)</sup>	732 (+5.7)
海天客運碼頭 <sup>(4)</sup> SkyPier <sup>(4)</sup>	754 (-7.0)	1 843 (+6.6)	2 597 (+2.3)
<b>總計 Total</b>	<b>20 270 (-6.3)</b>	<b>6 107 (+3.8)</b>	<b>26 377 (-4.2)</b>

註釋： (1) 數字與入境事務處發布的統計數字並不相等，原因是入境事務處的數字包括無須付船費的乘客(例如不足一歲者)。

Notes:

Figures do not tally with those released by the Immigration Department because figures of the Immigration Department cover passengers who are not required to pay fares (e.g. passengers less than one year of age).

(2) 數字包括乘搭直升機來往澳門的乘客人次。

Figures include helicopter passenger journeys to and from Macao.

(3) 按年客運量大增，是由於往來珠海的跨境渡輪服務在 2017 年 8 月 24 日至 10 月 4 日期間因強颱風「天鴿」導致珠海九州港碼頭設施嚴重損毀而暫停。

The large annual increase in passenger throughput is due to the suspension of cross-boundary ferry service to/from Zhu Hai during 24 August to 4 October 2017 as a result of the serious damage to the piers at Zhu Hai Jiu Zhou Port due to Severe Typhoon "Hato".

(4) 數字包括無須付船費的乘客(例如不足一歲者)。

Figures include passengers who are not required to pay fares (e.g. passengers less than one year of age).

資料來源： 海事處客運碼頭組及香港國際機場客運碼頭服務有限公司

Data Sources: Ferry Terminals Section, Marine Department and Hong Kong International Airport Ferry Terminal Services Ltd.

表 15  
TABLE 15

2018 年按航線分析抵港及離港乘客人次  
Passenger Arrivals and Departures by Route, 2018

A. 海事處轄下客運碼頭<sup>(1)</sup>  
Marine Ferry Terminals<sup>(1)</sup>

來往 <sup>(2)</sup> From/To <sup>(2)</sup>	運輸工具類別 Type of Carrier	抵港 Arrivals		離港 Departures	
		乘客人次 (千) Passenger Journeys ('000)	載客率 Passenger Load Factor	乘客人次 (千) Passenger Journeys ('000)	載客率 Passenger Load Factor
		(%)	(%)	(%)	(%)
澳門 Macao	雙體船 Catamaran	6 893 (-1.1)	47.6% (-4.0)	8 954 (-7.0)	59.9% (-6.9)
	噴射飛翼船 Jetfoil	1 807 (-11.6)	60.6% (-3.8)	1 810 (-15.3)	60.3% (-7.5)
	直升機 Helicopter	24 (-1.7)	32.5% (-5.2)	28 (-0.4)	37.7% (-3.9)
<b>小計 – 澳門</b> <b>Sub-total – Macao</b>		<b>8 725 (-3.5)</b>	<b>49.8% (-4.4)</b>	<b>10 792 (-8.5)</b>	<b>59.9% (-7.0)</b>
斗門 Doumen	雙體船 Catamaran	1 (-)	8.1% (-)	1 (-)	10.2% (-)
高明 Gaoming	雙體船 Catamaran	51 (+9.8)	64.6% (+59.6)	49 (+10.3)	62.2% (+59.9)
江門 Jiangmen	雙體船 Catamaran	11 (-72.6)	42.7% (+48.1)	11 (-73.8)	44.2% (+42.7)
蓮花山 Lianhuashan	雙體船 Catamaran	183 (+1.0)	46.5% (+22.1)	164 (-3.0)	35.7% (+0.5)
南沙 Nansha	雙體船 Catamaran	20 (-38.2)	16.9% (-10.7)	44 (-5.3)	38.3% (+36.6)
蛇口 Shekou	雙體船 Catamaran	111 (-1.0)	15.3% (-3.4)	103 (+2.4)	14.2% (+0.1)
深圳 Shenzhen	雙體船 Catamaran	0 (-100.0)	- (-)	0 (-100.0)	- (-)
順德 Shunde	雙體船 Catamaran	280 (+2.5)	47.8% (+5.5)	271 (+0.9)	45.9% (+3.0)
中山 Zhongshan	雙體船 Catamaran	481 (-0.1)	61.2% (+10.0)	500 (-0.3)	57.6% (+10.6)
珠海 Zhuhai	雙體船 Catamaran	987 (+10.6)	61.1% (+0.6)	996 (+8.2)	58.6% (-1.3)
<b>小計 – 內河港口</b> <b>Sub-total – River Trade Ports</b>		<b>2 124 (+3.2)</b>	<b>49.0% (+8.2)</b>	<b>2 139 (+2.1)</b>	<b>46.8% (+5.6)</b>
<b>海事處轄下客運碼頭</b> <b>Marine Ferry Terminals</b>		<b>10 849 (-2.2)</b>	<b>49.6% (-2.0)</b>	<b>12 931 (-6.9)</b>	<b>57.2% (-5.1)</b>

表 15 - 續  
TABLE 15 - Cont'd

B. 海天客運碼頭  
SkyPier

來往 <sup>(2)</sup> From/To <sup>(2)</sup>	運輸工具類別 Type of Carrier	抵港 Arrivals				離港 Departures			
		乘客人次(千) Passenger Journeys ('000)		載客率 Passenger Load Factor		乘客人次(千) Passenger Journeys ('000)		載客率 Passenger Load Factor	
			(%)		(%)		(%)		(%)
澳門 Macao	雙體船 Catamaran	451	(-6.2)	30.3%	(-6.4)	302	(-8.1)	22.6%	(-18.2)
<b>小計 - 澳門</b> <b>Sub-total - Macao</b>		<b>451</b>	<b>(-6.2)</b>	<b>30.3%</b>	<b>(-6.4)</b>	<b>302</b>	<b>(-8.1)</b>	<b>22.6%</b>	<b>(-18.2)</b>
虎門 Humen	雙體船 Catamaran	155	(-3.5)	36.4%	(+9.8)	82	(+8.7)	19.5%	(+23.0)
蓮花山 Lianhuashan	雙體船 Catamaran	81	(+43.4)	22.5%	(+41.7)	39	(+31.9)	12.1%	(+46.1)
南沙 Nansha	雙體船 Catamaran	0	(-100.0)	-	(-)	0	(-100.0)	-	(-)
蛇口 Shekou	雙體船 Catamaran	607	(+3.3)	45.3%	(+1.6)	262	(+17.6)	19.9%	(+16.2)
深圳 Shenzhen	雙體船 Catamaran	129	(-1.9)	26.5%	(+15.5)	47	(-4.9)	9.8%	(+8.8)
中山 Zhongshan	雙體船 Catamaran	153	(+1.6)	27.0%	(+8.9)	111	(+3.1)	23.8%	(+7.6)
珠海 Zhuhai	雙體船 Catamaran	93	(+13.2)	26.0%	(-5.0)	83	(+13.2)	23.3%	(-4.8)
<b>小計 - 內河港口</b> <b>Sub-total - River Trade Ports</b>		<b>1 218</b>	<b>(+4.2)</b>	<b>34.4%</b>	<b>(+7.3)</b>	<b>625</b>	<b>(+11.8)</b>	<b>18.6%</b>	<b>(+15.4)</b>
<b>海天客運碼頭</b> <b>SkyPier</b>		<b>1 669</b>	<b>(+1.2)</b>	<b>33.2%</b>	<b>(+3.2)</b>	<b>928</b>	<b>(+4.4)</b>	<b>19.7%</b>	<b>(+3.6)</b>

註釋：(1) 指海事處轄下的客運碼頭(即港澳碼頭、中國客運碼頭及屯門客運碼頭)。

Notes: It refers to Marine Ferry Terminals (i.e. Macau Ferry Terminal, China Ferry Terminal and Tuen Mun Ferry Terminal) under the Marine Department.

(2) 指抵港航程的起點站或離港航程的終點站。乘客人次包括在航程中其他站上落的乘客人次。

It refers to the origin of arrival trip or the destination of departure trip. Figures on passenger journeys include those boarding or alighting at other stop(s) of the trip.

資料來源：(A) 海事處客運碼頭組  
Data Sources: Ferry Terminals Section, Marine Department

(B) 香港國際機場客運碼頭服務有限公司  
Hong Kong International Airport Ferry Terminal Services Ltd.

表16  
TABLE 16

2018年按主要貨物裝卸地點分析港口貨櫃吞吐量  
Port Container Throughput by Main Cargo Handling Location, 2018

千個標準貨櫃單位  
'000 TEUs

類別 Category	葵青貨櫃碼頭 Kwai Tsing Container Terminals			葵青貨櫃碼頭以外 Other than Kwai Tsing Container Terminals			總計 Total
	海運 Seaborne	河運 River	小計 Sub-total	海運 Seaborne	河運 River	小計 Sub-total	
裝上 Loaded	(%)	(%)	(%)	(%)	(%)	(%)	(%)
載貨貨櫃 Laden Container	5 268 (-5.5)	1 420 (-1.3)	6 688 (-4.6)	409 (-8.7)	974 (-10.2)	1 383 (-9.8)	8 071 (-5.5)
空貨櫃 Empty Container	611 (+2.9)	172 (-1.1)	783 (+2.0)	61 (-17.9)	538 (-12.7)	599 (-13.2)	1 382 (-5.2)
<b>小計 Sub-total</b>	<b>5 879 (-4.7)</b>	<b>1 592 (-1.3)</b>	<b>7 471 (-4.0)</b>	<b>470 (-10.0)</b>	<b>1 512 (-11.1)</b>	<b>1 982 (-10.8)</b>	<b>9 452 (-5.5)</b>
卸下 Discharged							
載貨貨櫃 Laden Container	5 631 (-8.4)	1 169 (-7.2)	6 800 (-8.2)	569 (-18.3)	1 260 (+14.0)	1 828 (+1.5)	8 628 (-6.3)
空貨櫃 Empty Container	1 176 (+14.4)	26 (+20.4)	1 202 (+14.5)	39 (-35.7)	274 (-39.1)	313 (-38.7)	1 515 (-2.9)
<b>小計 Sub-total</b>	<b>6 807 (-5.1)</b>	<b>1 195 (-6.7)</b>	<b>8 002 (-5.4)</b>	<b>608 (-19.7)</b>	<b>1 534 (-1.4)</b>	<b>2 142 (-7.4)</b>	<b>10 144 (-5.8)</b>
合計 Overall							
載貨貨櫃 Laden Container	10 899 (-7.0)	2 589 (-4.0)	13 488 (-6.5)	977 (-14.5)	2 234 (+2.0)	3 211 (-3.7)	16 699 (-5.9)
空貨櫃 Empty Container	1 787 (+10.2)	198 (+1.3)	1 985 (+9.2)	101 (-26.0)	812 (-23.8)	912 (-24.1)	2 897 (-4.0)
<b>總計 Total</b>	<b>12 686 (-4.9)</b>	<b>2 787 (-3.7)</b>	<b>15 473 (-4.7)</b>	<b>1 078 (-15.7)</b>	<b>3 046 (-6.4)</b>	<b>4 123 (-9.1)</b>	<b>19 596 (-5.7)</b>

資料來源：政府統計處外發加工貿易及船務統計組及海事處統計組

Data Sources: Outward Processing and Shipping Statistics Section, Census and Statistics Department and Statistics Section, Marine Department

表17  
TABLE 17

2018年按葵青貨櫃碼頭以外的主要貨物裝卸地點分析港口貨櫃吞吐量  
Port Container Throughput by Main Cargo Handling Location Other than Kwai Tsing Container Terminals, 2018

千個標準貨櫃單位  
'000 TEUs

主要貨物裝卸地點 (葵青貨櫃碼頭以外) Main Cargo Handling Location (Other than Kwai Tsing Container Terminals)	泊位和倉庫碼頭 Berths and Wharves			碇泊處和浮泡 Anchorages and buoys			總計 Total
	海運 Seaborne	河運 River	小計 Sub-total	海運 Seaborne	河運 River	小計 Sub-total	
裝上 Loaded	(%)	(%)	(%)	(%)	(%)	(%)	(%)
載貨貨櫃 Laden Container	105 (+30.6)	867 (-9.0)	972 (-6.0)	304 (-17.3)	107 (-18.6)	411 (-17.6)	1 383 (-9.8)
空貨櫃 Empty Container	14 (-28.4)	428 (-9.0)	442 (-9.8)	47 (-14.3)	110 (-24.5)	157 (-21.7)	599 (-13.2)
<b>小計 Sub-total</b>	<b>118 (+19.2)</b>	<b>1 295 (-9.0)</b>	<b>1 414 (-7.2)</b>	<b>351 (-16.9)</b>	<b>217 (-21.7)</b>	<b>568 (-18.8)</b>	<b>1 982 (-10.8)</b>
卸下 Discharged							
載貨貨櫃 Laden Container	98 (-14.8)	1 060 (+18.9)	1 158 (+15.1)	471 (-19.0)	200 (-6.6)	670 (-15.7)	1 828 (+1.5)
空貨櫃 Empty Container	27 (+16.7)	246 (-41.7)	273 (-38.7)	13 (-66.9)	28 (+0.6)	40 (-38.7)	313 (-38.7)
<b>小計 Sub-total</b>	<b>125 (-9.6)</b>	<b>1 306 (-0.5)</b>	<b>1 431 (-1.4)</b>	<b>483 (-21.9)</b>	<b>227 (-5.8)</b>	<b>711 (-17.4)</b>	<b>2 142 (-7.4)</b>
合計 Overall							
載貨貨櫃 Laden Container	203 (+3.8)	1 927 (+4.5)	2 130 (+4.4)	774 (-18.3)	306 (-11.2)	1 081 (-16.4)	3 211 (-3.7)
空貨櫃 Empty Container	40 (-3.9)	675 (-24.5)	715 (-23.5)	60 (-35.9)	137 (-20.5)	197 (-25.9)	912 (-24.1)
<b>總計 Total</b>	<b>243 (+2.4)</b>	<b>2 602 (-5.0)</b>	<b>2 845 (-4.4)</b>	<b>835 (-19.9)</b>	<b>444 (-14.3)</b>	<b>1 278 (-18.0)</b>	<b>4 123 (-9.1)</b>

資料來源：政府統計處外發加工貿易及船務統計組及海事處統計組

Data Sources: Outward Processing and Shipping Statistics Section, Census and Statistics Department and Statistics Section, Marine Department

表 18  
TABLE 18

2018 年按貨物種類及運輸方式劃分的裝卸港口貨物  
Port Cargo Discharged/Loaded by Cargo Type and Mode of Transport, 2018

千公噸  
'000 Tonnes

貨物種類 Cargo Type	海運 Seaborne		河運 River		總計 Total	
	卸下 Discharged	裝上 Loaded	卸下 Discharged	裝上 Loaded	卸下 Discharged	裝上 Loaded
	(%)	(%)	(%)	(%)	(%)	(%)
包裝散貨 Break bulk cargo	5 349 (-6.6)	320 (+10.1)	1 799 (-13.2)	1 639 (-20.3)	7 148 (-8.4)	1 959 (-16.5)
貨櫃貨物 Containerised cargo	69 494 (-9.5)	53 618 (-5.9)	22 664 (+0.9)	29 588 (-3.3)	92 158 (-7.1)	83 206 (-5.0)
無包裝液態散貨 Unpacked liquid bulk cargo	19 940 (-2.5)	236 (+25.0)	1 133 (-11.5)	156 (-29.8)	21 073 (-3.1)	392 (-4.6)
無包裝固態散貨 Unpacked solid bulk cargo	15 094 (-5.3)	498 (-7.7)	24 036 (-19.6)	12 977 (-19.3)	39 130 (-14.6)	13 475 (-18.9)
<b>總計 Total</b>	<b>109 878 (-7.6)</b>	<b>54 672 (-5.8)</b>	<b>49 631 (-10.9)</b>	<b>44 360 (-9.4)</b>	<b>159 509 (-8.6)</b>	<b>99 032 (-7.4)</b>

資料來源： 政府統計處外發加工貿易及船務統計組  
Data Source: Outward Processing and Shipping Statistics Section, Census and Statistics Department



表 19  
TABLE 19

政府繫泊浮泡統計數字  
Government Mooring Buoys Statistics

A. 數目 (年底數字) Number (Figures as at end of the year)	2017	2018
"A 級" 政府繫泊浮泡數目 No. of "A Class" Government Mooring Buoys	12	10
"B 級" 政府繫泊浮泡數目 No. of "B Class" Government Mooring Buoys	4	4

B. 使用情況 Usage	2017	2018
"A 級" 政府繫泊浮泡訂用日數 Days booked for "A Class" Government Mooring Buoys	1 007	787
"B 級" 政府繫泊浮泡訂用日數 Days booked for "B Class" Government Mooring Buoys	168	68
"A 級" 政府繫泊浮泡訂用百分率 Percentage of "A Class" Government Mooring Buoys used based on booking	23.1%	21.7%
"B 級" 政府繫泊浮泡訂用百分率 Percentage of "B Class" Government Mooring Buoys used based on booking	11.5%	4.7%
上述數字只顯示訂用情況，實際使用率則如下： Whilst the above figures are indicative of booking usage, the actual physical occupancy rates are as follows:		
"A 級" 政府繫泊浮泡 "A Class" Government Mooring Buoys	22.2%	21.2%
"B 級" 政府繫泊浮泡 "B Class" Government Mooring Buoys	11.3%	3.6%

C. 浮泡及側面標記保養 Maintenance of Buoys and Lateral Marks	2017	2018
按期保養的燈浮標 Light Buoys maintained	126	127
按期保養的養魚區浮泡 Mariculture Buoys maintained	178	178
按期保養的側面標記 Lateral Marks maintained	31	33
按期保養的小型繫泊浮泡 Minor Mooring Buoys maintained	130*	130
按期保養的大型繫泊浮泡 Major Mooring Buoys maintained	40	40
按期保養的 "A 級" 政府繫泊浮泡 "A Class" Government Mooring Buoys maintained	12	10
按期保養的 "B 級" 政府繫泊浮泡 "B Class" Government Mooring Buoys maintained	4	4

資料來源： (A) & (B) 海事處船隻航行監察中心  
Data Sources: Vessel Traffic Centre, Marine Department

(C) 海事處港口後勤組  
Port Logistics Section, Marine Department

表 20  
TABLE 20

按分布地點分析香港私人繫泊設備數目 (截至 2018 年年底)  
Number of Private Moorings Laid in Hong Kong by Location (as at end 2018)

地點	Location	私人繫泊設備 數目 Number of Private Moorings
香港仔南避風塘及銅鑼灣避風塘	<b>Aberdeen South Typhoon Shelter and Causeway Bay Typhoon Shelter</b>	
香港仔南避風塘 (白沙灣)	Aberdeen South Typhoon Shelter (Pak Sha Wan)	1
香港仔南避風塘 (布廠灣)	Aberdeen South Typhoon Shelter (Po Chong Wan)	449
銅鑼灣避風塘	Causeway Bay Typhoon Shelter	186
小計	<b>Sub-total</b>	<b>636</b>
其他避風塘及 維多利亞港口界限以內的其他地方	<b>Other Typhoon Shelters and Elsewhere within the Limits of Victoria Port</b>	
長洲避風塘	Cheung Chau Typhoon Shelter	9
喜靈州避風塘	Hei Ling Chau Typhoon Shelter	7
荔枝角	Lai Chi Kok	3
新油麻地避風塘	New Yau Ma Tei Typhoon Shelter	16
新油麻地避風塘 (防波堤外)	New Yau Ma Tei Typhoon Shelter (Outside Breakwater)	28
油麻地錨地以北	North of Yau Ma Tei Anchorage	1
藍巴勒海峽避風塘 (防波堤外)	Rambler Channel Typhoon Shelter (Outside Breakwater)	6
三家村避風塘	Sam Ka Tsuen Typhoon Shelter	1
汀九	Ting Kau	63
土瓜灣	To Kwa Wan	4
青衣北	Tsing Yi North	4
荃灣	Tsuen Wan	89
屯門避風塘	Tuen Mun Typhoon Shelter	7
小計	<b>Sub-total</b>	<b>238</b>

表 20 – 續  
TABLE 20 – Cont'd

地點	Location	私人繫泊設備 數目 Number of Private Moorings
在香港水域內的其他地方	Elsewhere in the Waters of Hong Kong	
香港仔西避風塘 (防波堤外)	Aberdeen West Typhoon Shelter (Outside Breakwater)	14
赤徑口 (大灘海峽)	Chek Keng Hau (Long Harbour)	0
長沙欄	Cheung Sha Lan	33
愉景灣	Discovery Bay	6
下尾灣 (南丫島發電廠)	Ha Mei Wan (Lamma Island Power Station)	3
白沙灣	Hebe Haven	670
滘西洲	Kau Sai Chau	4
高塘口 (大灘海峽)	Ko Tong Hau (Long Harbour)	1
鹿洲灣	Luk Chau Wan	1
鹿頸	Luk Keng	3
龍鼓灘	Lung Kwu Tan	1
熨波洲	Middle Island	100
稔樹灣	Nim Shue Wan	13
北大嶼山	North Lantau Island	1
船灣海	Shuen Wan Hoi	34
赤柱正灘	Stanley Main Beach	4
大欖	Tai Lam	0
大美督	Tai Mei Tuk	32
大網仔	Tai Mong Tsai	7
大網仔 (阿公灣)	Tai Mong Tsai (A Kung Wan)	3
大潭港	Tai Tam Harbour	49
斬竹灣	Tsam Chuk Wan	10
青衣西	Tsing Yi West	2
早禾坑	Tso Wo Hang	18
屯門避風塘 (防波堤外)	Tuen Mun Typhoon Shelter (Outside Breakwater)	6
往灣 (黃竹角海)	Wong Wan (Wong Chuk Kok Hoi)	1
榕樹灣	Yung Shue Wan	2
<b>小計</b>	<b>Sub-total</b>	<b>1 018</b>
<b>總計</b>	<b>Total</b>	<b>1 892</b>

資料來源： 海事處私用繫泊分組  
Data Source: Private Mooring Sub-unit, Marine Department

表 21  
TABLE 21

碇泊處一覽 (截至 2018 年年底)  
List of Anchorages (as at end 2018)

碇泊處 Anchorages		面積 (公頃) Area (hectares)
<b>A. 檢疫及入境船隻碇泊處</b> <b>Quarantine and Immigration Anchorages</b>		
1. 東面檢疫及入境船隻碇泊處	Eastern Quarantine and Immigration Anchorage	35.1
2. 屯門入境船隻碇泊處	Tuen Mun Immigration Anchorage	89.9
3. 西面檢疫及入境船隻碇泊處	Western Quarantine and Immigration Anchorage	121.1
小計	<b>Sub-total</b>	<b>246.1</b>
<b>B. 危險品碇泊處</b> <b>Dangerous Goods Anchorages</b>		
1. 將軍澳危險品碇泊處	Junk Bay Dangerous Goods Anchorage	28.9
2. 交椅洲危險品碇泊處	Kau Yi Chau Dangerous Goods Anchorage	288.2
3. 大鵬灣危險品碇泊處	Mirs Bay Dangerous Goods Anchorage	316.5
4. 糧船灣海危險品碇泊處	Rocky Harbour Dangerous Goods Anchorage	26.9
5. 南丫島南危險品碇泊處	South Lamma Dangerous Goods Anchorage	228.5
6. 荃灣危險品碇泊處	Tsuen Wan Dangerous Goods Anchorage	61.9
7. 西面危險品碇泊處	Western Dangerous Goods Anchorage	145.6
8. 危險品留用碇泊處	Reserved Dangerous Goods Anchorage	37.3
小計	<b>Sub-total</b>	<b>1 133.8</b>
<b>C. 維修碇泊處</b> <b>Servicing Anchorages</b>		
1. 奇力 1 號碇泊處	Kellett Anchorage No.1	77.1
2. 奇力 2 號碇泊處	Kellett Anchorage No.2	258.5
3. 奇力 3 號碇泊處	Kellett Anchorage No.3	116.2
4. 馬灣碇泊處	Ma Wan Anchorage	138.4
5. 南丫島北碇泊處	North Lamma Anchorage	375.1
6. 南丫島西北碇泊處	North-west Lamma Anchorage	553.9
7. 半山石碇泊處	Pun Shan Shek Anchorage	352.1
8. 深水角 1 號碇泊處	Sham Shui Kok Anchorage No.1	72.6
9. 深水角 2 號碇泊處	Sham Shui Kok Anchorage No.2	35.6
10. 西面 1 號碇泊處	Western Anchorage No.1	310.6
11. 西面 2 號碇泊處	Western Anchorage No.2	278.7
12. 西面 3 號碇泊處	Western Anchorage No.3	272.4
13. 油麻地碇泊處	Yau Ma Tei Anchorage	105.0
小計	<b>Sub-total</b>	<b>2 946.2</b>

表 21 – 續  
TABLE 21 – Cont'd

碇泊處 Anchorages		面積 (公頃) Area (hectares)
<b>D. 領航特別碇泊處</b> <b>Pilotage Special Anchorages</b>		
1. 南丫島東南碇泊處	South-east Lamma Anchorage	285.5
2. 南丫島西南碇泊處	South-west Lamma Anchorage	228.4
3. 龍鼓水道碇泊處	Urmston Road Anchorage	190.0
小計	<b>Sub-total</b>	<b>703.9</b>
<b>E. 避風碇泊處</b> <b>Sheltered Anchorages</b>		
1. 柴灣貨物裝卸灣	Chai Wan Cargo Basin	11.2
2. 長沙欄	Cheung Sha Lan	6.7
3. 吉澳	Kat O	1.6
4. 熨波洲	Middle Island	6.9
5. 稔樹灣	Nim Shue Wan	2.3
6. 白沙灣	Pak Sha Wan (Hebe Haven)	84.0
7. 西貢	Sai Kung	4.3
8. 沙頭角	Sha Tau Kok	0.6
9. 船灣海	Shuen Wan Hoi	26.0
10. 聖士提反灣	St. Stephen's Bay	1.3
11. 大美督	Tai Mei Tuk	12.3
12. 大澳	Tai O	4.0
13. 大潭港	Tai Tam Harbour	5.7
14. 汀九	Ting Kau	0.7
15. 斬竹灣	Tsam Chuk Wan	7.5
16. 荃灣	Tsuen Wan	3.7
小計	<b>Sub-total</b>	<b>178.8</b>
<b>總計</b>	<b>Total</b>	<b>5 208.8</b>

資料來源： 海事處策劃、發展協調及港口保安部

Data Source: Planning, Development & Port Security Branch, Marine Department

表 22  
TABLE 22

避風塘一覽 (截至 2018 年年底)  
List of Typhoon Shelters (as at end 2018)

避風塘	Typhoon Shelters	面積 (公頃) Area (hectares)
1. 香港仔南避風塘	Aberdeen South Typhoon Shelter	26.1
2. 香港仔西避風塘	Aberdeen West Typhoon Shelter	34.2
3. 銅鑼灣避風塘	Causeway Bay Typhoon Shelter	10.6
4. 長洲避風塘	Cheung Chau Typhoon Shelter	50.0
5. 喜靈洲避風塘	Hei Ling Chau Typhoon Shelter	76.6
6. 觀塘避風塘	Kwun Tong Typhoon Shelter	33.8
7. 新油麻地避風塘	New Yau Ma Tei Typhoon Shelter	64.6
8. 藍巴勒海峽避風塘	Rambler Channel Typhoon Shelter	12.9
9. 三家村避風塘	Sam Ka Tsuen Typhoon Shelter	1.9
10. 筲箕灣避風塘	Shau Kei Wan Typhoon Shelter	17.2
11. 船灣避風塘	Shuen Wan Typhoon Shelter	10.3
12. 土瓜灣避風塘	To Kwa Wan Typhoon Shelter	14.8
13. 屯門避風塘	Tuen Mun Typhoon Shelter	56.8
14. 鹽田仔避風塘	Yim Tin Tsai Typhoon Shelter	9.2
<b>總計</b>	<b>Total</b>	<b>419.0</b>

資料來源：海事處策劃、發展協調及港口保安部

Data Source: Planning, Development & Port Security Branch, Marine Department

表 23  
TABLE 23

公眾貨物裝卸區一覽 (截至 2018 年年底)  
List of Public Cargo Working Areas (as at end 2018)

公眾貨物裝卸區	Public Cargo Working Area	面積 (公頃) Area (hectares)	符合發牌條件之 停泊位長度 (米) Licensable Seafrontage (metres)
1. 柴灣公眾貨物裝卸區	Chai Wan Public Cargo Working Area	2.1	548
2. 新油麻地公眾貨物裝卸區	New Yau Ma Tei Public Cargo Working Area	6.8	1 212
3. 藍巴勒海峽公眾貨物裝卸區	Rambler Channel Public Cargo Working Area	4.1	1 036
4. 昂船洲公眾貨物裝卸區	Stonecutters Island Public Cargo Working Area	2.9	560
5. 屯門公眾貨物裝卸區	Tuen Mun Public Cargo Working Area	3.3	616
6. 西區公眾貨物裝卸區	Western District Public Cargo Working Area	3.3	880
<b>總計</b>	<b>Total</b>	<b>22.5</b>	<b>4 852</b>

資料來源：海事處貨物裝卸組

Data Source: Cargo Handling Section, Marine Department

表 24  
TABLE 24

垃圾收集、油污和檢控個案統計數字  
Refuse Collection, Oil Pollution and Prosecution Statistics

A. 垃圾收集和油污事故  
Refuse Collection and Oil Pollution Incident

		2017	2018
1. 從海港收集的垃圾 (公噸)	Refuse collected from harbour (tonnes)	11 642	11 534
2. 從船舶收集的垃圾 (公噸)	Refuse collected from vessels (tonnes)	4 402	4 550
3. 接報的疑似油污事故 (宗)	Alleged oil pollution incidents reported (cases)	169	136

B. 檢控統計數字  
Prosecution Statistics

罪行 Offence	陳詞／聆訊個案 No. of Cases Heard		定罪個案 No. of Cases Convicted		罰款 Fine (HK\$)	
	2017	2018	2017	2018	2017	2018
1. 違反碰撞規例 Breach of collision regulations	22	25	22	23	56,500	66,500
2. 違反牌照／准許證條件 Breach of licence/permit conditions	84	71	84	71	108,100	88,100
3. 未獲允許運載乘客／超額運載乘客 Carrying passengers without permission/excessive passengers	31	19	31	17	35,400	16,700
4. 不遵從指示 Failing to comply with direction	32	27	31	27	116,500	170,600
5. 沒有採取合理措施以確保受僱人在工程進行時戴著適當的安全頭盔 Failing to ensure the person employed to wear an appropriate safety helmet	30	46	30	45	47,150	79,400
6. 未獲允許讓該船隻緊靠著另一船舶而停放 Lying alongside another vessel without permission	62	28	62	28	60,900	25,250
7. 靠泊於已展示禁止船隻靠泊告示的岸壁／登岸梯級 Lying alongside seawall/landing steps prohibited by notice	5	4	5	4	4,050	3,600
8. 船上沒有合格船長／輪機員 No qualified master/engineer on board	191	115	188	115	196,850	121,050
9. 在沒有有效驗船證明書的情況下操作 Operating a vessel without valid certificate of survey	44	22	44	22	50,150	26,400
10. 沒持有有效證明書的人進行貨物處理 Person carrying out cargo handling without certificates	54	42	54	41	101,700	95,900
11. 超速行駛 Steaming in excessive speed	24	26	24	26	39,700	48,360
12. 使用沒有第三者風險保險的船隻 Using a vessel not insured against third party risk	36	13	36	13	64,700	26,500
13. 船隻未有領牌／並無有效牌照 Vessel was not licensed/did not have a valid licence	236	155	224	153	452,400	749,750
14. 其他海事罪行 Other marine offences	526	323	510	313	702,550	772,700
<b>總計 Total</b>	<b>1 377</b>	<b>916</b>	<b>1 345</b>	<b>898</b>	<b>2,036,650</b>	<b>2,290,810</b>

資料來源： (A) 海事處港口後勤組  
Data Sources: Port Logistics Section, Marine Department

(B) 海事處檢控小組  
Prosecution Unit, Marine Department

**表 25**  
**TABLE 25**

**按噸位等級分析香港領牌船隻 (截至 2018 年年底)**  
**Hong Kong Licensed Vessels by Tonnage Classification (as at end 2018)**

船隻類型	Vessel Type	<=60 淨註冊噸位 <=60 NRT	>60 – 300 淨註冊噸位 >60 - 300 NRT	>300 淨註冊噸位 >300 NRT	總計 <sup>(2)(3)</sup> Total <sup>(2)(3)</sup>
<b>第 I 類</b>	<b>Class I</b>				
(a) 渡輪船隻	Ferry Vessel	10	30	9	49
(b) 水上食肆	Floating Restaurant	0	0	1	1
(c) 小輪	Launch	187	54	1	242
(d) 多用途船隻	Multi-purposes Vessel	9	6	0	15
(e) 原始船隻	Primitive Vessel	65	1	0	66
(f) 固定船隻	Stationary Vessel	0	0	0	0
<b>小計</b>	<b>Sub-total</b>	<b>271</b>	<b>91</b>	<b>11</b>	<b>373</b>
<b>第 II 類</b>	<b>Class II</b>				
(a) 起重機躉船	Crane Barge	0	2	3	5
(b) 危險品運輸船	Dangerous Goods Carrier	1	11	15	27
(c) 挖泥船	Dredger	0	15	1	16
(d) 乾貨貨船	Dry Cargo Vessel	41	50	14	105
(e) 非自航駁船	Dumb Lighter	24	48	453	525
(f) 食油運輸船	Edible Oil Carrier	0	0	12	12
(g) 平面工作躉	Flat-top Work Barge	16	21	25	62
(h) 浮塢	Floating Dock	0	0	3	3
(i) 水上工場	Floating Workshop	0	1	0	1
(j) 開底躉船	Hopper Barge	0	2	26	28
(k) 登岸平台	Landing Platform	43	0	1	44
(l) 登岸浮躉	Landing Pontoon	33	28	13	74
(m) 有毒液體物質 運輸船	Noxious Liquid Substance Carrier	0	0	0	0
(n) 石油運輸船	Oil Carrier	17	104	49	170
(o) 領港船	Pilot Boat	22	0	0	22
(p) 特別用途船隻	Special Purpose Vessel	25	14	50	89
(q) 固定船隻	Stationary Vessel	93	23	5	121
(r) 交通船	Transportation Boat	28	0	0	28
(s) 交通舢舨	Transportation Sampan	64	0	0	64
(t) 拖船	Tug	83	109	0	192
(u) 供水船	Water Boat	11	7	0	18
(v) 工作船	Work Boat	295	10	4	309
<b>小計</b>	<b>Sub-total</b>	<b>796</b>	<b>445</b>	<b>674</b>	<b>1 915</b>



表 25 – 續  
TABLE 25 – Cont'd

船隻類型	Vessel Type	<=60 淨註冊噸位 <=60 NRT	>60 – 300 淨註冊噸位 >60 - 300 NRT	>300 淨註冊噸位 >300 NRT	總計 <sup>(2)(3)</sup> Total <sup>(2)(3)</sup>
<b>第 III 類</b>	<b>Class III</b>				
(a) 運魚船	Fish Carrier	15	11	0	26
(b) 漁船舢舨	Fishing Sampan	1 961	0	0	1 961
(c) 漁船	Fishing Vessel	568	1 331	0	1 899
(d) 舷外機開敞式 舢舨	Outboard Open Sampan	2 619	0	0	2 619
小計	<b>Sub-total</b>	<b>5 163</b>	<b>1 342</b>	<b>0</b>	<b>6 505</b>
<b>第 IV 類</b>	<b>Class IV</b>				
(a) 機械輔助帆船	Auxiliary Powered Yacht	N.A.	N.A.	N.A.	769
(b) 遊樂船	Cruiser	N.A.	N.A.	N.A.	2 767
(c) 開敞式遊樂船	Open Cruiser	N.A.	N.A.	N.A.	6 624
小計	<b>Sub-total</b>	<b>N.A.</b>	<b>N.A.</b>	<b>N.A.</b>	<b>10 160</b>
<b>總計</b>	<b>Total</b>	<b>6 230<sup>(1)</sup></b>	<b>1 878<sup>(1)</sup></b>	<b>685<sup>(1)</sup></b>	<b>18 953</b>

註釋： (1) 不包括第 IV 類領牌船隻的數字。

Notes: Not including Class IV licensed vessels.

(2) 包括 58 艘閑置船隻。

Figures include 58 laid-up vessels.

(3) 不包括根據《商船(本地船隻)(住家船隻)規例》(第 548A 章)領牌的 4 艘住家船隻。

Figures exclude 4 dwelling vessels which are licensed under the Merchant Shipping (Local Vessels) (Dwelling Vessels) Regulation (Cap. 548A).

資料來源： 海事處牌照及關務組

Data Source: Licensing and Port Formalities Section, Marine Department

表 26  
TABLE 26

船舶安全監督統計數字  
Ship Safety Statistics

A. 貨船安全統計數字 Cargo Ships Safety Statistics	2017	2018
<b>香港註冊貨船品質審查／檢驗</b> <b>Hong Kong Registered Cargo Ships Quality Checked/Inspected</b> <ol style="list-style-type: none"> <li>1. 品質審查的註冊貨船數目 No. of quality checks on Hong Kong registered cargo ships</li> <li>2. 品質檢驗和稽核貨船數目 No. of flag state quality control ship inspections and company visits</li> <li>3. 審核船體、機械和設備圖則數目 No. of plans examined in respect of hull, machinery and equipment</li> </ol>	<p>2 333</p> <p>86</p> <p>189</p>	<p>2 411</p> <p>124</p> <p>253</p>
<b>貨船設備安全證明書</b> <b>Cargo Ship Safety Equipment Certificate (SEC)</b> <ol style="list-style-type: none"> <li>1. 所簽發的豁免證明書數目 No. of exemption certificates issued</li> <li>2. 應其他國家機關要求而檢驗的外來船舶，以簽發設備安全證明書 Foreign ships surveyed at the request of other national authorities for the issue of SEC</li> </ol>	<p>731</p> <p>0</p>	<p>834</p> <p>0</p>
<b>貨船無線電安全證明書</b> <b>Cargo Ship Safety Radio Certificate (SRC)</b> <ol style="list-style-type: none"> <li>1. 所簽發的豁免證明書數目 No. of exemption certificates issued</li> <li>2. 應其他國家機關要求而檢驗的外來船舶，以簽發無線電安全證明書 Foreign ships surveyed at the request of other national authorities for the issue of SRC</li> </ol>	<p>93</p> <p>0</p>	<p>292</p> <p>0</p>
<b>其他</b> <b>Others</b> <ol style="list-style-type: none"> <li>1. 所簽發的《海員培訓、發證和值班標準國際公約》最低安全配員證明書 Standards of Training, Certification and Watchkeeping Minimum Safe Manning Certificate issued</li> <li>2. 對構造安全、設備安全、無線電安全證明書的監察，包括中期檢驗 Safety Construction, Equipment and Radio Certificates monitored (including intermediate surveys)</li> <li>3. 對國際載重線證明書的監察，包括定期檢驗 International Load Line Certificate monitored (including periodic surveys)</li> <li>4. 對國際防止油污證明書、油污損害民事責任保險證明書或其他保證證明書及燃油污染損害民事責任保險證明書或其他經濟擔保證明書的監察 – 續期、年度／中期檢驗 International Oil Pollution Prevention (IOPP) Certificate, Certificate of Insurance or Other Financial Security in Respect of Civil Liability for Oil Pollution Damage and Certificate of Insurance or Other Financial Security in Respect of Civil Liability for Bunker Oil Pollution Damage monitored (including renewal, annual/intermediate surveys)</li> <li>5. 對新船公司所作的國際安全管理稽核 International Safety Management (ISM) audits of new shipping companies</li> <li>6. 其他檢驗 (例如合格證明書等) Other surveys (e.g. Certificates of Fitness etc.)</li> </ol>	<p>1 068</p> <p>1 851</p> <p>617</p> <p>3 787*</p> <p>22</p> <p>0</p>	<p>451</p> <p>1 983</p> <p>661</p> <p>4 250</p> <p>15</p> <p>0</p>

表 26 – 續  
TABLE 26 – Cont'd

B. 客船安全統計數字 Passenger Ships Safety Statistics	2017	2018
<b>乘客定額及船舶安全證明書</b> <b>Passenger and Ship Safety Certificates</b>		
1. 客船安全證明書 – 國際航線 Passenger Ship Safety Certificate (PSSC) – International Voyage	0	0
2. 客船安全證明書 – 短途國際航線 Passenger Ship Safety Certificate (PSSC) – Short International Voyage	1	1
3. 高速船安全證明書 – 內河航限 High Speed Craft Safety Certificate (HSCSC) – River Trade Limits	68	63
4. 延長客船安全證明書有效期 Extensions to PSSC	0	0
5. 高速船安全證明書檢驗船舶總數 Total no. of vessels surveyed for HSCSC	68	63
6. 受檢驗的客船無線電裝置 Passenger ship radio installations surveyed	68	63
7. 所簽發的載重線證明書數目 No. of Load Line Certificates issued	7	3
8. 所簽發的載重線豁免證明書數目 No. of Load Line Exemption Certificates issued	8	9
9. 所簽發的國際防止油污證明書及增補數目 No. of IOPP Certificates with Supplement issued	13	4
10. 所簽發的國際防止油污豁免證明書數目 No. of IOPP Exemption Certificates issued	0	0
11. 所簽發的最低安全配員證明書數目 No. of Minimum Safe Manning Certificates issued	1	0
12. 對船公司所作的國際安全管理稽核 ISM audits of shipping companies	5	4
13. 對船舶所作的國際安全管理稽核 ISM audits of ships	17	31
14. 所簽發的國際安全管理稽核符合證明數目 No. of ISM Document of Compliance issued	1	1
15. 所簽發的國際安全管理稽核安全管理證明書數目 No. of ISM Safety Management Certificates issued	6	13
16. 所簽發的臨時國際安全管理稽核安全管理證明書數目 No. of Interim ISM Safety Management Certificates issued	1	0
<b>雜項檢查，圖則審核和設備</b> <b>Miscellaneous Inspection, Plans Approval and Equipment</b>		
1. 審核客船船體、機械和設備圖則數目 No. of plans examined for hull, machinery and equipment of passenger ships	45	61
2. 簽發檢查證明書、雜項檢驗／檢查數目 No. of certificates of inspection issued, miscellaneous surveys/inspections	155	133

表 26 – 續  
TABLE 26 – Cont'd

C. 港口國監督統計數字 Port State Control Statistics	2017	2018
<b>在香港特別行政區港口內進行的港口國監督檢查<sup>(1)</sup>：</b> <b>Port State Control Inspections<sup>(1)</sup> in the Harbour of the Hong Kong Special Administrative Region:</b>		
1. 在履行身為港口國監督委員而對《東京諒解備忘錄》應有的責任下，受港口國監督檢查的個別外來船舶數目 (遠洋船舶) No. of individual foreign ships inspected under the obligation to Tokyo Memorandum of Understanding (MOU), as a member Port State of the Committee (Ocean ships)	632	708
2. 受港口國監督檢查的個別內地註冊／領牌船舶數目 (沿岸船舶) No. of individual Mainland registered/licensed ships inspected (Coastal ships)	72	57
3. 對遠洋及沿岸船舶進行港口國監督檢查 (包括複檢) 總次數 Total no. of Port State Control inspections (including re-inspections) carried out on ocean and coastal ships	786	807
4. 因低於安全標準而被扣留在港的遠洋及沿岸船舶總次數 Total no. of detentions of sub-standard ocean and coastal ships in Hong Kong	37	27

註釋：(1) 就港口國監督檢查方面而言，遠洋船舶是指懸掛中國（不包括香港註冊）或外國旗的公約船舶和懸掛外國旗的非公約船舶，而沿岸船舶是指中國內地註冊／領牌的非公約船舶。

Note: For Port State Control inspection, ocean ships refer to those convention ships hoisting flags of China (excluding Hong Kong registered) or foreign countries, and non-convention ships registered with foreign countries. Coastal ships are those non-convention ships registered with/licensed by the Mainland of China.

資料來源：(A) 海事處貨船安全組  
Data Sources: Cargo Ships Safety Section, Marine Department

(B) 海事處客船安全組  
Passenger Ships Safety Section, Marine Department

(C) 海事處港口國監督組  
Port State Control Section, Marine Department

表 27  
TABLE 27

本地船隻安全／海事工業安全／海事意外統計數字  
Local Vessels Safety/Marine Industrial Safety/Marine Accidents Statistics

A. 船舶的檢驗和檢查統計 Statistics on Surveys and Inspections of Vessels	2017	2018
<b>I. 給本地船隻簽發／批註的證明書／適合聲明／紀錄等 Certificates/Declarations/Records etc. Issued/Endorsed to Local Vessels</b> <ol style="list-style-type: none"> <li>1. 簽發／批註乾舷勘定證明書數目 No. of Freeboard Assignment Certificates issued/endorsed</li> <li>2. 簽發安全設備檢驗紀錄數目 No. of Survey Records of Safety Equipment issued</li> <li>3. 簽發／批註載重線證明書數目 No. of Load Line Certificates issued/endorsed</li> <li>4. 簽發噸位丈量記錄數目 No. of Records of Tonnage Measurement issued</li> <li>5. 簽發／批註散裝有毒液體物質的防污證明書數目 No. of Pollution Prevention Certificates for the Carriage of Noxious Liquid Substances in Bulk issued/endorsed</li> <li>6. 簽發適合運載危險品聲明數目 No. of Declarations of Fitness for the Carriage of Dangerous Goods issued</li> <li>7. 簽發香港防止油類污染證明書數目 No. of Hong Kong Oil Pollution Prevention Certificates issued</li> <li>8. 簽發／批註香港防止空氣污染證明書數目 No. of Hong Kong Air Pollution Prevention Certificates issued/endorsed</li> <li>9. 給本地船隻簽發驗船證明書數目 No. of Certificates of Survey issued to Local Vessels               <ul style="list-style-type: none"> <li>– 第 I 類 Class I</li> <li>– 第 II 類 Class II</li> <li>– 第 III 類 Class III</li> <li>– 第 IV 類 Class IV</li> </ul> </li> </ol>		
<b>總計 Total</b>	<b>3 130</b>	<b>2 702</b>
<b>II. 審批圖則／文件 Plans/Documents Examined</b> <ol style="list-style-type: none"> <li>1. 船隻傾斜測試及穩性確定數目 No. of Vessels Inclining tested and Stability Information assessed</li> <li>2. 審核本地船隻的船體、機械和設備圖則數目 No. of Plans of Hull, Machinery and Equipment examined for Local Vessels</li> </ol>		
<b>總計 Total</b>	<b>3 242</b>	<b>2 668</b>

表 27 – 續  
TABLE 27 – Cont'd

A. 船舶的檢驗和檢查統計 (續) Statistics on Surveys and Inspections of Vessels (Cont'd)	2017	2018
<b>III. 檢驗本地船隻數目 (包括新船、現有船隻、抽查船隻及被扣留的船隻)</b> <b>Local Vessels Inspected (New, Existing, Spot-check Vessels and Detained Vessels)</b> <ol style="list-style-type: none"> <li>1. 執行其他政府部門要求檢查的船隻數目 No. of Inspections of Vessels for Other Government Departments</li> <li>2. 為簽發證明書而接受檢驗的本地船隻數目 No. of local vessels inspected for issuing certificates <ul style="list-style-type: none"> <li>完成首次檢驗而新領牌的船隻數目 No. of Newly Licensed Vessels after Completing Initial Survey</li> <li>在本港檢驗本地船隻的數目 No. of Local Vessels Inspected Locally</li> </ul> </li> </ol>	<p style="text-align: center;">39</p> <p style="text-align: center;">2 139</p> <p style="text-align: center;">216</p> <p style="text-align: center;">1 923</p>	<p style="text-align: center;">52</p> <p style="text-align: center;">1 639</p> <p style="text-align: center;">142</p> <p style="text-align: center;">1 497</p>
<b>總計</b> <b>Total</b>	<p style="text-align: center;"><b>2 178</b></p>	<p style="text-align: center;"><b>1 691</b></p>
<b>IV. 檢驗本地船隻次數 (包括新船、現有船隻、抽查船隻及被扣留的船隻)</b> <b>Inspection Visits Made to Local Vessels (New, Existing, Spot-check Vessels and Detained Vessels)</b> <ol style="list-style-type: none"> <li>1. 檢驗碰撞後破損的本地船隻次數 No. of Inspection Surveys of Damaged Local Vessels after Collision</li> <li>2. 抽查及複驗本地船隻次數 No. of Spot Checks and Audit Checks on Local Vessels</li> <li>3. 海外檢驗本地船隻次數 No. of Overseas Visits for Inspection of Local Vessels</li> <li>4. 本地船隻在本港首次及定期檢查次數 No. of Initial and Periodical Inspection Visits Made Locally to Local Vessels</li> </ol>	<p style="text-align: center;">5</p> <p style="text-align: center;">154</p> <p style="text-align: center;">105</p> <p style="text-align: center;">3 130</p>	<p style="text-align: center;">14</p> <p style="text-align: center;">173</p> <p style="text-align: center;">120</p> <p style="text-align: center;">2 660</p>
<b>總計</b> <b>Total</b>	<p style="text-align: center;"><b>3 394</b></p>	<p style="text-align: center;"><b>2 967</b></p>
<b>V. 舉辦安全講座及研討會</b> <b>Talks and Seminars Conducted</b>	<p style="text-align: center;"><b>0</b></p>	<p style="text-align: center;"><b>0</b></p>

表 27 – 續  
TABLE 27 – Cont'd

B. 檢查正在進行工程的船舶及調查海上工業意外事故等 Inspections of Vessels Engaged in Works and Investigations of Marine Industrial Accidents etc.	2017	2018
I. 貨櫃檢查數目 No. of Containers Inspected	7 962	8 931
<b>II. 海事工業安全檢查 (不包括貨櫃檢查)</b> <b>Marine Industrial Safety Inspections (not including inspection of containers)</b> <ol style="list-style-type: none"> <li>1. 檢查正在修理的船舶 Inspections of Vessels Undergoing Repair</li> <li>2. 檢查海事工程船舶 Inspections of Vessels Engaged in Marine Construction</li> <li>3. 檢查遠洋船裝卸貨物工具 Cargo Gear Inspections on Ocean-going Vessels</li> <li>4. 檢查遠洋船裝卸貨物 Stevedoring Inspections on Ocean-going Vessels</li> <li>5. 檢查駁船裝卸貨物工具 Cargo Gear Inspections on Lighters</li> <li>6. 檢查駁船裝卸貨物 Stevedoring Inspections on Lighters</li> </ol>		
<b>總計</b> <b>Total</b>	4 960	4 913
<b>III. 海事工業意外的調查及查詢數目</b> <b>Marine Industrial Accidents Investigated/Inquired</b> <ol style="list-style-type: none"> <li>1. 調查致命的非海事工業意外 Non-marine Industrial Fatal Accidents investigated</li> <li>2. 調查致命的海事工業意外 Marine Industrial Fatal Accidents investigated</li> <li>3. 調查嚴重意外 Serious Accidents investigated</li> <li>4. 調查嚴重意外 (無傷亡) Serious Accidents (No Casualty) investigated</li> <li>5. 查詢非嚴重意外 Non-serious Accidents inquired</li> </ol>		
<b>總計</b> <b>Total</b>	71	71

表 27 – 續  
TABLE 27 – Cont'd

B. 檢查正在進行工程的船舶及調查海上工業意外事故等 (續) Inspections of Vessels Engaged in Works and Investigations of Marine Industrial Accidents etc. (Cont'd)	2017	2018
<b>IV. 發生海事工業意外的數目</b> <b>Marine Industrial Accidents Occurred</b> <ol style="list-style-type: none"> <li>1. 修船意外總數 Total Ship Repair Accidents</li> <li>2. 裝卸貨物意外總數 Total Cargo Handling Accidents</li> <li>3. 海事工程意外總數 Total Marine Construction Accidents</li> </ol>		
<b>總計</b> <b>Total</b>	<b>88</b>	<b>83</b>
<b>V. 簽發修船許可證／轉介檢控小組的個案／發出警告信的數目</b> <b>Letters of Permission to Undertake Repairs Issued/Cases Referred to Prosecutions Unit/Warning Letters Issued</b> <ol style="list-style-type: none"> <li>1. 簽發修船許可證 Letters of Permission to Undertake Repairs issued</li> <li>2. 轉介檢控小組的個案 Cases referred to Prosecutions Unit</li> <li>3. 發出警告信 Warning Letters issued</li> </ol>		
<b>總計</b> <b>Total</b>	<b>3 603</b>	<b>3 510</b>
<b>VI. 海事工業安全的宣傳及教育</b> <b>Promotion and Education on Marine Industrial Safety</b> <ol style="list-style-type: none"> <li>1. 發出安全指令 Safety Directions issued</li> <li>2. 出版或修訂的安全小冊子／單張／海報／貼紙數目 No. of Safety Pamphlets/Leaflets/Posters/Stickers published or revised</li> <li>3. 出版或修訂的安全指南／工作守則數目 No. of Safety Guides/Codes of Practice published or revised</li> <li>4. 安全講座及研討會的舉辦數目 No. of Safety Talks and Seminars conducted</li> <li>5. 到訪船舶推廣安全 Safety Promotion Visits to Vessels</li> </ol>		
<b>總計</b> <b>Total</b>	<b>1 505</b>	<b>1 883</b>



表 27 – 續  
TABLE 27 – Cont'd

C. 香港註冊船舶的損失數目 <sup>(1)</sup> Loss of Vessels Registered in Hong Kong <sup>(1)</sup>	2017	2018
損失船舶數目 Number Lost	2	0

D. 2018 年海上意外事故統計 Marine Accidents Statistics in 2018								
意外事故類別 Type of Accident	香港水域範圍以內 <sup>(2)</sup> Within Hong Kong Waters <sup>(2)</sup>				香港水域範圍以外 <sup>(3)</sup> Outside Hong Kong Waters <sup>(3)</sup>			
	宗數 No. of Cases	死亡人數 Persons Killed	受傷人數 Persons Injured	失蹤人數 Persons Missing	宗數 No. of Cases	死亡人數 Persons Killed	受傷人數 Persons Injured	失蹤人數 Persons Missing
相撞 Collision	130	0	5	0	35	3	0	31
擱淺／觸礁 Grounding/Stranding	15	0	1	0	17	0	0	0
沉沒／入水 Sinking/Foundering	27	0	0	0	2	0	0	0
火警／爆炸 Fire/Explosion	18	0	4	0	19	0	0	0
翻沉／傾斜 Capsized/Listing	15	2	0	0	0	0	0	0
接觸 Contact	45	0	4	0	13	0	1	0
其他 Others	85	0	4	0	43	0	0	0
<b>總計 Total</b>	<b>335</b>	<b>2</b>	<b>18</b>	<b>0</b>	<b>129</b>	<b>3</b>	<b>1</b>	<b>31</b>

表 27 – 續  
TABLE 27 – Cont'd

E. 海上意外事故調查 Marine Accident Investigation	2017	2018
調查意外事故 《船舶及港口管制條例》、《商船(本地船隻)條例》及《商船條例》 Accidents Investigated Shipping and Port Control Ordinance, Merchant Shipping (Local Vessel) Ordinance and Merchant Shipping Ordinance	18	14
初步研訊 《商船條例》 Preliminary Inquiries Merchant Shipping Ordinance	0	0
領港研訊 《領港條例》 Pilotage Inquiries Pilotage Ordinance	0	0
海事法庭 Marine Courts	0	0
調查委員會 Board of Inquiry	0	0
對調查委員會裁決提出上訴 Appeal against the Decision of Board of Inquiry	0	0

註釋：(1) 指因遇險而導致損失的船舶。

Notes: Refers to loss of vessels due to casualty or accident.

(2) 包括所有船舶(如香港註冊及外國註冊船舶、本地領牌船隻、內河船隻、沿海船隻、政府船舶等等)的意外及傷亡數字。

Including accidents and casualties figures of all vessels (such as Hong Kong registered and foreign registered vessels, local licensed vessels, river trade vessels, coastal vessels, government launches, etc.).

(3) 只包括在香港註冊或領牌的船舶的意外及傷亡數字。

Including accidents and casualties figures of Hong Kong registered vessels or local licensed vessels only.

資料來源：(A) 海事處本地船舶安全組

Data Sources: Local Vessels Safety Section, Marine Department

(B) 海事處海事工業安全組

Marine Industrial Safety Section, Marine Department

(C) 海事處船舶註冊及商船海員管理處

Shipping Registry and Mercantile Marine Office, Marine Department

(D) & (E) 海事處海事意外調查組

Marine Accident Investigation Section, Marine Department

表 28  
TABLE 28

海員發證、註冊和僱用統計數字  
Seafarers' Certification, Registration and Employment Statistics

A. 遠洋合格證明書 Seagoing Certificates of Competency		2017		2018	
		申請人數 Number of Applications	及格人數 Number of Successes	申請人數 Number of Applications	及格人數 Number of Successes
<b>1. 商船船長及 甲板高級船員</b>	<b>Master Mariner and Deck Officer</b>				
一級甲板高級船員 (商船船長)	Deck Officer Class 1 (Master Mariner)				
筆試	Written Examination	17	2	27	3
口試	Oral Examination	37	7	6	2
其他 <sup>(1)</sup>	Other Services <sup>(1)</sup>	73	72	25	25
二級甲板高級船員	Deck Officer Class 2				
筆試	Written Examination	85	26	99	28
口試	Oral Examination	14	2	21	5
其他 <sup>(1)</sup>	Other Services <sup>(1)</sup>	14	14	15	15
三級甲板高級船員	Deck Officer Class 3				
筆試	Written Examination	116	43	65	16
口試	Oral Examination	79	31	72	22
訊號	Signal	39	19	24	7
其他 <sup>(1)</sup>	Other Services <sup>(1)</sup>	47	47	16	15
<b>小計</b>	<b>Sub-total</b>	<b>521</b>	<b>263</b>	<b>370</b>	<b>138</b>
<b>2. 輪機師</b>	<b>Marine Engineer Officer</b>				
一級輪機師	Marine Engineer Officer – Class 1				
筆試	Written Examination	27	6	39	16
口試	Oral Examination	2	1	15	5
其他 <sup>(1)</sup>	Other Services <sup>(1)</sup>	35	35	7	7
二級輪機師	Marine Engineer Officer – Class 2				
筆試	Written Examination	27	8	40	10
口試	Oral Examination	15	4	19	1
其他 <sup>(1)</sup>	Other Services <sup>(1)</sup>	42	41	10	10
三級輪機師	Marine Engineer Officer – Class 3				
口試	Oral Examination	2	2	24	13
其他 <sup>(1)</sup>	Other Services <sup>(1)</sup>	93	89	16	16
電子技術高級船員	Electro-Technical Officer				
口試	Oral Examination	0	0	0	0
其他 <sup>(1)</sup>	Other Services <sup>(1)</sup>	0	0	0	0
<b>小計</b>	<b>Sub-total</b>	<b>243</b>	<b>186</b>	<b>170</b>	<b>78</b>
<b>總計</b>	<b>Total</b>	<b>764</b>	<b>449</b>	<b>540</b>	<b>216</b>

表 28 – 續  
TABLE 28 – Cont'd

B. 內河航行合格證明書 River Trade Certificates of Competency		2017		2018	
		申請人數 Number of Applications	及格人數 Number of Successes	申請人數 Number of Applications	及格人數 Number of Successes
<b>1. 甲板高級船員</b>	<b>Deck Officer</b>				
一級甲板高級船員	Deck Officer Class 1				
筆試	Written Examination	8	2	4	2
口試	Oral Examination	18	4	12	1
其他 <sup>(1)</sup>	Other Services <sup>(1)</sup>	6	6	0	0
二級甲板高級船員	Deck Officer Class 2				
筆試	Written Examination	64	7	49	15
口試	Oral Examination	0	0	16	1
其他 <sup>(1)</sup>	Other Services <sup>(1)</sup>	6	6	1	0
三級甲板高級船員	Deck Officer Class 3				
筆試	Written Examination	112	35	91	29
口試	Oral Examination	0	0	0	0
訊號	Signal	34	8	37	8
其他 <sup>(1)</sup>	Other Services <sup>(1)</sup>	15	15	7	6
<b>小計</b>	<b>Sub-total</b>	<b>263</b>	<b>83</b>	<b>217</b>	<b>62</b>
<b>2. 輪機師</b>	<b>Marine Engineer Officer</b>				
一級輪機師	Marine Engineer Officer – Class 1				
筆試	Written Examination	0	0	2	0
口試	Oral Examination	0	0	1	0
其他 <sup>(1)</sup>	Other Services <sup>(1)</sup>	2	2	0	0
二級輪機師	Marine Engineer Officer – Class 2				
筆試	Written Examination	37	5	37	11
口試	Oral Examination	17	1	24	4
其他 <sup>(1)</sup>	Other Services <sup>(1)</sup>	6	6	1	1
三級輪機師	Marine Engineer Officer – Class 3				
口試	Oral Examination	13	9	12	9
其他 <sup>(1)</sup>	Other Services <sup>(1)</sup>	5	4	0	0
<b>小計</b>	<b>Sub-total</b>	<b>80</b>	<b>27</b>	<b>77</b>	<b>25</b>
<b>總計</b>	<b>Total</b>	<b>343</b>	<b>110</b>	<b>294</b>	<b>87</b>

表 28 – 續  
TABLE 28 – Cont'd

C.1 本地合格證明書 Local Certificates of Competency		2017		2018	
		申請人數 Number of Applications	及格人數 Number of Successes	申請人數 Number of Applications	及格人數 Number of Successes
<b>1. 船長</b>	<b>Coxswain</b>				
一級船長	Coxswain Grade 1				
筆試	Written Examination	48	15	60	16
其他 <sup>(1)</sup>	Other Services <sup>(1)</sup>	183	177	605	582
二級船長	Coxswain Grade 2				
筆試	Written Examination	215	67	238	91
口試	Oral Examination	164	22	186	24
其他 <sup>(1)</sup>	Other Services <sup>(1)</sup>	587	578	866	859
三級船長	Coxswain Grade 3				
筆試	Written Examination	458	134	502	147
口試	Oral Examination	0	0	2	0
其他 <sup>(1)</sup>	Other Services <sup>(1)</sup>	812	800	840	829
<b>小計</b>	<b>Sub-total</b>	<b>2 467</b>	<b>1 793</b>	<b>3 299</b>	<b>2 548</b>
<b>2. 輪機操作員</b>	<b>Engine Operator</b>				
一級輪機操作員	Engine Operator Grade 1				
其他 <sup>(1)</sup>	Other Services <sup>(1)</sup>	371	369	424	424
二級輪機操作員	Engine Operator Grade 2				
筆試	Written Examination	93	32	152	45
其他 <sup>(1)</sup>	Other Services <sup>(1)</sup>	14	14	28	28
三級輪機操作員	Engine Operator Grade 3				
筆試	Written Examination	411	115	495	150
其他 <sup>(1)</sup>	Other Services <sup>(1)</sup>	399	398	439	436
<b>小計</b>	<b>Sub-total</b>	<b>1 288</b>	<b>928</b>	<b>1 538</b>	<b>1 083</b>
<b>總計</b>	<b>Total</b>	<b>3 755</b>	<b>2 721</b>	<b>4 837</b>	<b>3 631</b>

表 28 – 續  
TABLE 28 – Cont'd

C.2 遊樂船隻操作人合格證明書 Pleasure Vessel Operator Certificate of Competency		2017		2018	
		申請人數 Number of Applications	及格人數 Number of Successes	申請人數 Number of Applications	及格人數 Number of Successes
遊樂船隻 一級操作人	Pleasure Vessel Operator Grade 1				
筆試	Written Examination	276	110	288	118
口試	Oral Examination	230	36	224	46
其他 <sup>(1)</sup>	Other Services <sup>(1)</sup>	595	589	656	652
遊樂船隻 二級操作人	Pleasure Vessel Operator Grade 2				
筆試	Written Examination	8 170	3 092	8 788	3 547
口試	Oral Examination	0	0	0	0
其他 <sup>(1)</sup>	Other Services <sup>(1)</sup>	773	768	833	831
<b>總計</b>	<b>Total</b>	<b>10 044</b>	<b>4 595</b>	<b>10 789</b>	<b>5 194</b>

D. 部門考試 Departmental Examinations		2017		2018	
		考試人數 Examined	及格人數 Passed	考試人數 Examined	及格人數 Passed
一級本地船長	Coxswain Grade 1	1	1	0	0
二級本地船長	Coxswain Grade 2	80	24	116	39
三級本地船長	Coxswain Grade 3	13	12	30	24
一級輪機操作員	Engine Operator Grade 1	0	0	0	0
二級輪機操作員	Engine Operator Grade 2	26	13	25	14
三級輪機操作員	Engine Operator Grade 3	44	28	34	25
<b>總計</b>	<b>Total</b>	<b>164</b>	<b>78</b>	<b>205</b>	<b>102</b>

表 28 – 續  
TABLE 28 – Cont'd

E. 其他考試／評定 Other Examinations/Assessments		2017		2018	
		申請人數 Number of Applications	及格人數 Number of Successes	申請人數 Number of Applications	及格人數 Number of Successes
培訓合格證書	Certificate of Proficiency (CoP)				
甲板高級海員	Able Seafarer Deck	58	37	1	0
導航值班普通船員	Navigational Watch Rating	8	3	0	0
機房高級海員	Able Seafarer Engine	11	6	5	2
機房值班普通船員	Engine Room Watch Rating	9	5	2	2
電子技術普通船員	Electro-Technical Rating	0	0	0	0
其他	Others	1 114	1 015	244	239
類型級別證明書 (考試、重新生效及 夜航批准)	Type Rating Certificate (Examination, Revalidation and Night Service Approval)	489	442	446	414
香港執照	Hong Kong Licence	23 129	21 764	20 905	19 353
本地豁免	Local Exemption	11	11	18	18
<b>總計</b>	<b>Total</b>	<b>24 829</b>	<b>23 283</b>	<b>21 621</b>	<b>20 028</b>

F. 截至 2018 年 12 月 31 日為止的海員註冊人數 Seafarer's Registration as at 31.12.2018			
根據第 478 章註冊的海員 Seafarers Registered Under Cap. 478	第一部 Part I	第二部 Part II	總計 Total
		4 987	1 702

表 28 - 續  
TABLE 28 - Cont'd

<b>G. 2018 年所簽發的僱用登記簿數目</b> <b>Employment Registration Books Issued, 2018</b>		
續發簿	Subsequent Books	0
補發簿	Replacement Books	1
新海員簿	New Entrants Books	185
<b>總計</b>	<b>Total</b>	<b>186</b>

<b>H. 2018 年海員就業統計數字<sup>(2)</sup></b> <b>Seafarers Employment Statistics, 2018<sup>(2)</sup></b>			
僱用海員方式 Seafarers Employed Through			
核准公司名冊 Permitted Company Roster	總名冊 General Roster	緊急僱用／重新僱用等 Emergency/ Re-employment, etc.	總計 Total
495	36	1 227	1 758

<b>I. 船公司及職位統計數字</b> <b>Companies and Posts Statistics</b>	
截至 2018 年 12 月 31 日為止在商船海員管理處登記僱用本港註冊海員的船公司數目 Shipping companies listed with Mercantile Marine Office to employ Hong Kong registered seafarers as at 31.12.2018	23
2018 年按船公司所交周年報表而編製的本港海員就業職位 Posts filled by Hong Kong seafarers as compiled from annual returns submitted by shipping companies, 2018	1 343



表28 – 續  
TABLE 28 – Cont'd

<b>J. 2018年訂立和終結的香港註冊船舶船員協議條款</b> <b>Crew Agreements of Hong Kong Registered Ships Opened and Closed, 2018</b>				
	訂立的協議 Agreements Opened		終結的協議 Agreements Closed	
	在香港境內 In Hong Kong	在香港境外 Outside Hong Kong	在香港境內 In Hong Kong	在香港境外 Outside Hong Kong
船員協議條款數目 No. of agreements	48	905	71	1 342
<b>總計</b> <b>Total</b>	<b>953</b>		<b>1 413</b>	

<b>K. 香港註冊船舶僱用和解職的海員人次<sup>(3)</sup></b> <b>Number of Employment and Discharge of Seafarers<sup>(3)</sup> by Hong Kong Registered Ships</b>	<b>2017</b>	<b>2018</b>
僱用的海員人次 No. of employment of seafarers	73 320	57 180
解職的海員人次 No. of discharge of seafarers	78 840	84 780

註釋： (1) 包括有關證明書批註、豁免、重新生效等事宜的申請。  
Notes: Including applications for endorsement, exemption and revalidation etc.

(2) 數字指年內本港註冊海員的僱用協議數目。  
Figures refer to number of employment agreements of Hong Kong registered seafarers during the year.

(3) 數字包括在香港以外地方註冊的海員。  
Figures include seafarers registered outside Hong Kong.

資料來源： (A) – (E) 海事處海員發證組  
Data Sources: Seafarers' Certification Section, Marine Department

(F) – (K) 海事處船舶註冊及商船海員管理處  
Shipping Registry and Mercantile Marine Office, Marine Department

表 29  
TABLE 29

香港註冊船舶統計數字 (截至 2018 年年底)  
Statistics on Ships Registered in Hong Kong (as at end 2018)

A. 船舶數目和噸位  
Number of Ships and Tonnage

	船舶註冊概況 On register
船舶數目 No. of Ships	2 622
淨噸位 <sup>(1)</sup> (千噸) Net Tonnage <sup>(1)</sup> ('000 tons)	67 608
總噸位 <sup>(1)</sup> (千噸) Gross Tonnage <sup>(1)</sup> ('000 tons)	125 223

B. 按總噸位分析在香港註冊的船舶數目  
Ships Registered in Hong Kong by Gross Tonnage

總噸位 <sup>(1)</sup> Gross Tonnage <sup>(1)</sup>	船舶數目 No. of Ships
< 500	143
500 - < 1 000	48
1 000 - < 2 000	40
2 000 - < 3 000	10
3 000 - < 4 000	16
4 000 - < 5 000	22
5 000 - < 10 000	262
10 000 - < 15 000	86
15 000 - < 20 000	179
20 000 - < 25 000	219
25 000 - < 30 000	212
30 000 - < 35 000	208
35 000 - < 40 000	160
40 000 - < 45 000	232
45 000 - < 50 000	47
50 000 - < 55 000	81
55 000 - < 60 000	18
60 000 - < 65 000	44
65 000 - < 85 000	18
85 000 - < 115 000	288
115 000 - < 145 000	82
145 000 - < 175 000	155
175 000 - < 200 000	21
≥ 200 000	31
<b>總計 Total</b>	<b>2 622</b>

表 29 – 續  
TABLE 29 – Cont'd

C. 按船舶種類分析在香港註冊的船舶數目  
Ship Registered in Hong Kong by Ship Type

船舶類型	Type of Ship	船舶數目 No. of Ships	總噸位 <sup>(1)</sup> (千噸) Gross Tonnage <sup>(1)</sup> ('000 tons)
貨船	Cargo Ship	1 957	98 710
散裝貨船	<i>Bulk Carrier</i>	1 048	45 972
集裝箱船	<i>Container Vessel</i>	545	34 189
一般貨船	<i>General Cargo Ship</i>	231	3 869
礦沙／散貨／ 油類混用船	<i>Ore/Bulk/Oil (OBO)   Carrier</i>	101	13 747
其他貨船	<i>Other Cargo Ship</i>	32	934
液貨船	Tanker	500	26 431
油輪	<i>Oil Tanker</i>	250	19 066
化學品運載船	<i>Chemical Tanker</i>	172	3 253
液化氣體運載船	<i>Gas Carrier</i>	65	3 728
其他液貨船	<i>Other Tanker</i>	13	384
拖船	Tug	34	13
客船	Passenger Ship	67	62
高速客船	<i>High Speed Craft</i>	50	27
其他客船	<i>Other Passenger Ship</i>	17	35
遊艇	Yacht	64	7
<b>總計</b>	<b>Total</b>	<b>2 622</b>	<b>125 223</b>

註釋： (1) 淨噸位及總噸位以每單位 100 立方呎計算。  
Note: Net and gross tonnages are in units of 100 cubic feet.

資料來源： 海事處船舶註冊處  
Data Source: Shipping Registry, Marine Department

表 30  
TABLE 30

政府船隊統計數字  
Government Fleet Statistics

項目	Item	2017	2018
1. 開支預算總額 <sup>(1)</sup> (百萬元)	Total expenditure estimate <sup>(1)</sup> (\$M)	579.5	629.5
2. 政府船隊科實際員額總數(包括船員) <sup>(2)</sup>	Total strength in Government Fleet Division (GFD) (including crew) <sup>(2)</sup>	445	437
3. (i) 建成及交收的政府新船 (ii) 建造中的政府新船 (iii) 已完成的政府新船計劃 (iv) 正進行中的政府新船計劃	(i) Government new vessels built and delivered (ii) Government new vessels under construction (iii) Government new vessel projects completed (iv) Government new vessel projects in progress	15 206 6 20	19 213 6 25
4. 新船招標／報價	Tenders/Quotations called for new vessels	15	10
5. 新船合約	Contracts awarded for new vessels	11	6
6. 已完成的合約及購買規格書	Contracts and procurement specifications completed	26	31
7. (i) 政府船舶總數 <sup>(2)</sup> a. 大型機動船舶 b. 大型高速船 c. 其他雜類型船舶 (ii) 配備海事處人員的政府船舶 <sup>(2)</sup> (iii) 海事處可供調配船員的時數率(%) (iv) 已處理報廢的政府船舶	(i) Total number of vessels <sup>(2)</sup> a. Major mechanised vessels b. High speed craft (large type) c. Other miscellaneous class vessels (ii) Government craft manned by the Marine Department (MD) <sup>(2)</sup> (iii) MD crew staff time available for deployment (%) (iv) Government craft disposed	850 94 13 743 43 87.5 22	905 97 13 795 48 85.9 14
8. (i) 大型機動船舶及大型高速船的可提供使用率(%) (ii) 大型機動船舶及大型高速船的平均數目 (iii) 船舶維修後首次試航成功率(%) (iv) 政府船隊維修保養服務使用者滿意率(%)	(i) Availability of major mechanised vessels and high speed craft (large type) (%) (ii) Average number of major mechanised vessels and high speed craft (large type) (iii) Vessel sea trial successful rate in first attempt after repair maintenance service (%) (iv) User satisfaction level on Government fleet repair maintenance service (%)	87.1 107 97.2 98.6	87.8 110 96.4 99.8
9. 大型機動船舶及大型高速船(包括他們的機動子艇)保養費總額(百萬元)	Total maintenance cost of major mechanised vessels and high speed craft (large type) (including their mechanised daughter boats) (\$M)	201.2	218.8
10. 大型機動船舶及大型高速船(包括他們的機動子艇)平均保養費(百萬元)	Average maintenance cost of major mechanised vessels and high speed craft (large type) (including their mechanised daughter boats) (\$M)	1.9	2.0
11. (i) 船舶維修定期保養合約安排總數 a. 根據合約保養的船舶數目 b. 根據合約保養的主機數目 (ii) 採購機械零件的定期合約數目	(i) Total number of vessel maintenance term contract (TC) arrangements a. Number of vessels maintained under TC b. Number of main engines repaired under TC (ii) Number of TC for procurement of machinery spare parts	55 519 343 17	51 501 236 24
12. 配備海事處人員的政府船舶肇事個案 (i) 肇事政府船舶數目 (ii) 工傷意外傷亡數目 a. 船塢員工 b. 船員	Accidents involving Government craft manned by MD (i) Number of Government vessels involved (ii) Number of casualties in industrial accidents a. Dockyard staff b. Crew	2 0 4	10 2 8
13. 參加職業安全及健康(職安健)課程的政府船塢人員人數 (i) 職業安全健康局舉辦課程 (ii) 政府船隊科工業安全組舉辦的課程 (iii) 其他職安健課程	Number of attendees of Government Dockyard to Occupational Safety and Health (OSH) training courses (i) Organised by the OSH Council (ii) Organised by the Industrial Safety Section, GFD (iii) Other OSH courses	42 133 113	9 117 91

註釋：(1) 指財政年度內的數字(由當年4月1日至下年3月31日)。

Notes: Figures refer to those in financial year (i.e. from 1 April of current year to 31 March of next year).

(2) 指該年年底的數字。

Figures refer to the position as at end of the year.

資料來源：海事處政府船隊科

Data Source: Government Fleet Division, Marine Department

表 31  
TABLE 31

政府船舶所屬部門及可用率情況 (截至 2018 年年底)  
Departmental Ownership and Availabilities of Government Vessels (as at end 2018)

船舶類型 Vessel Type	所屬部門 Ownership														
	漁農 自然 護理署 AFCD	醫療 輔助隊 AMS	民眾 安全 服務隊 CAS	土木 工程 拓展署 CEDD	懲教署 CSD	香港 海關 C&ED	環境 保護署 EPD	消防處 FSD	衛生署 DH	香港 警務處 HKPF	入境 事務處 Imm D	康樂及 文化 事務署 LCSD	海事處 MD	水務署 WSD	總計 Total
機動子艇及泳灘艇 Mechanised Daughter Boats & Beach Craft	0	0	0	0	0	7	0	9	0	17	0	135	1	0	169
浮橋物／泳灘浮台及浮筏 Floating Bridge Structures/Beach Platforms & Rafts	0	0	0	0	0	0	0	0	0	0	0	452	0	0	452
機動及非機動充氣式橡皮艇 Mechanised and Non-mechanised Inflatable Boats	1	1	11	0	0	2	1	12	0	6	0	1	2	2	39
駁船 Lighters	0	0	0	0	0	0	0	1	0	6	0	0	21	0	28
小型機動船及小艇 Minor Mechanised Vessels & Dinghies	15	0	0	0	0	0	0	13	0	9	0	0	6	5	48
大型機動船舶 Major Mechanised Vessels	4	0	0	3	2	7	1	11	1	36	7	0	25	0	97
大型高速船 High Speed Craft (large type)	0	0	0	0	0	3	0	0	0	10	0	0	0	0	13
中型高速船 High Speed Craft (medium type)	7	0	0	0	0	2	0	2	0	43	0	0	5	0	59
<b>總計 Total</b>	<b>27</b>	<b>1</b>	<b>11</b>	<b>3</b>	<b>2</b>	<b>21</b>	<b>2</b>	<b>48</b>	<b>1</b>	<b>127</b>	<b>7</b>	<b>588</b>	<b>60</b>	<b>7</b>	<b>905</b>
大型機動船及大型高速船平均可提供使用率 <sup>(1)</sup> Average Availability of Major Mechanised Vessels & High Speed Craft (large type) <sup>(1)</sup>	89.6%	-	-	87.0%	87.4%	86.8%	81.7%	86.8%	97.5%	86.7%	84.8%	-	90.0%	-	87.8%

註釋： (1) 數字不包括在政府船塢以外因維修而停機的時間。

Note: Figures exclude downtime due to repair conducted outside the Government Dockyard.

資料來源： 海事處政府船隊科

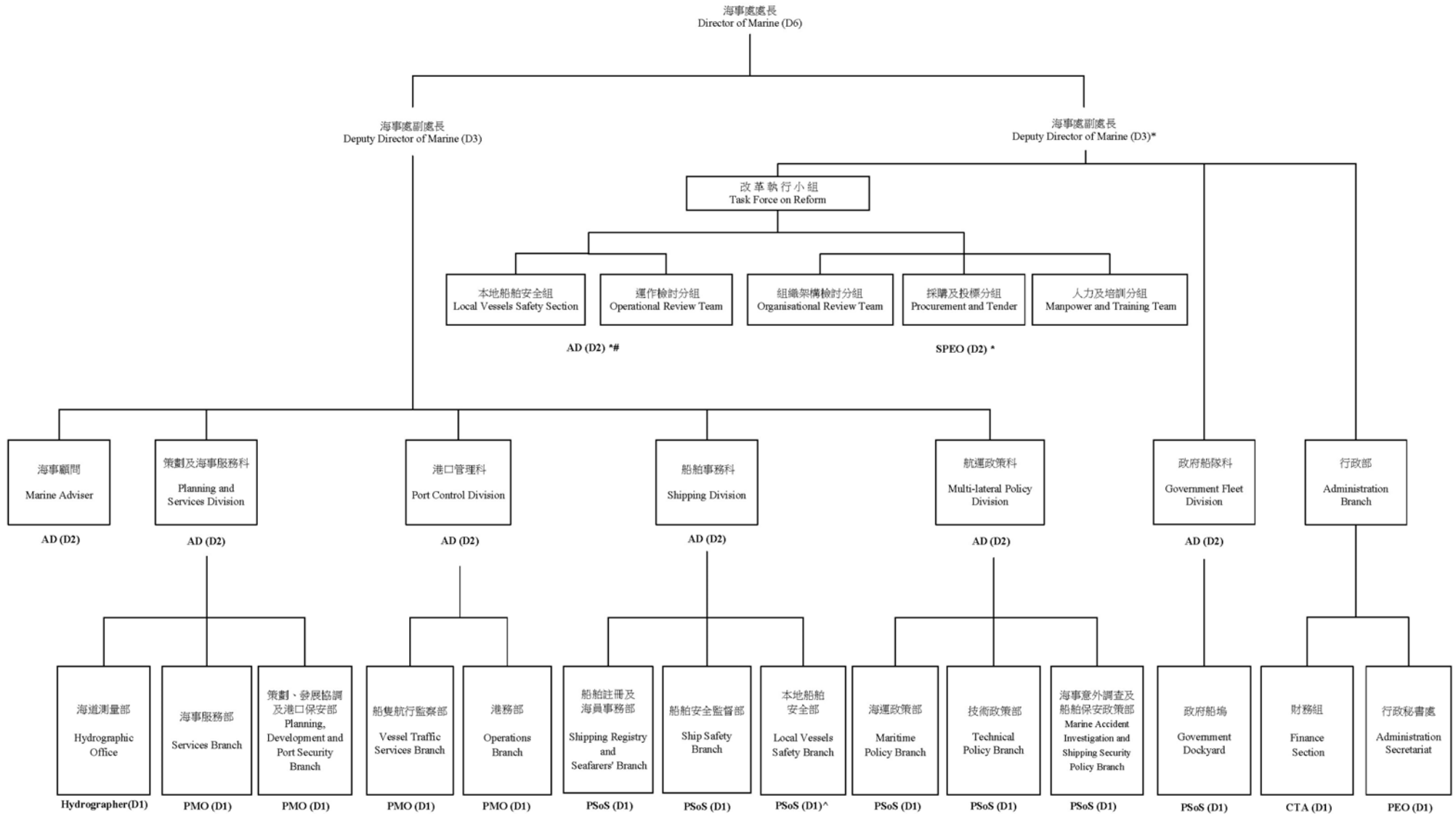
Data Source: Government Fleet Division, Marine Department

附 錄

Appendices

附錄 A  
APPENDIX A

海事處組織架構圖 (截至 2018 年年底)  
Organisation Chart of the Marine Department (as at end 2018)



\* Supernumerary post 編外職位

# Assistant Director (Special Duties) reports to Deputy Director on operation and technical matters of Local Vessels Safety Section. 助理處長 (特別職務) 負責向副處長匯報本地船舶安全組的運作和技術事宜

^ General Manager/Local Vessels Safety Branch also oversees the operation of Local Vessels Safety Section and reports to Assistant Director (Special Duties) in this context. 本地船舶安全部總經理亦負責監督本地船舶安全組的運作，並向助理處長 (特別職務) 匯報這方面的工作。

圖例:  
Legend:  
AD = 海事處助理處長 Assistant Director of Marine  
PMO = 首席海事主任 Principal Marine Officer  
PSoS = 首席驗船主任 Principal Surveyor or of Ships  
Hydrographer = 海道測量師 Hydrographer

SPEO = 高級首席行政主任 Senior Principal Executive Officer  
PEO = 首席行政主任 Principal Executive Officer  
CTA = 總庫務會計師 Chief Treasury Accountant  
D6 = 首長薪級第六點 (如此類推) Directorate Level 6 (and so on)

**附錄 B**  
**APPENDIX B**

**海事處的編制和實際員額 (截至 2018 年年底)**  
**Establishment and Strength of the Marine Department (as at end 2018)**

		編制 Establishment	實際員額 Strength
<b>首長級人員</b>			
<b>Directorate Officers</b>			
海事處處長	Director of Marine (D6)	1	0
首長級甲級政務官	Administrative Officer Staff Grade A (D6)	0	1
海事處副處長	Deputy Director of Marine (D3)	1	1
首長級乙級政務官	Administrative Officer Staff Grade B (D3)	1♦	1
海事處助理處長	Assistant Director of Marine (D2)	6 + 1♦	6
高級首席行政主任	Senior Principal Executive Officer (D2)	1♦	1
首席驗船主任	Principal Surveyor of Ships (D1)	7	6
首席海事主任	Principal Marine Officer (D1)	4	4
海道測量師	Hydrographer (D1)	1	1
首席行政主任	Principal Executive Officer (D1)	1	1
總庫務會計師	Chief Treasury Accountant (D1)	1	0
<b>部門職系</b>			
<b>Departmental Grade</b>			
高級驗船主任	Senior Surveyor of Ships	18 + 1♦	13
驗船主任／ 助理驗船主任	Surveyor of Ships/ Assistant Surveyor of Ships	34	21
高級海事主任	Senior Marine Officer	18 + 2♦	10
海事主任／ 助理海事主任	Marine Officer/ Assistant Marine Officer	36	22
高級船舶安全主任	Senior Shipping Safety Officer	1	1
船舶安全主任	Shipping Safety Officer	7	6
海事監督	Marine Controller	15 + 1♦	8
助理海事監督	Assistant Marine Controller	51	56
輔航設備監督	Superintendent of Aids to Navigation	1	1
助理輔航設備監督	Assistant Superintendent of Aids to Navigation	2	2
總驗船督察	Chief Ship Inspector	2	2
高級驗船督察	Senior Ship Inspector	13 + 1♦	13
驗船督察	Ship Inspector	26 + 2♦	14
助理驗船督察	Assistant Ship Inspector	23	32
高級助理船務主任	Senior Assistant Shipping Master	28	25
一級海事督察	Marine Inspector I	103 + 1♦	93
二級海事督察	Marine Inspector II	131	131
小輪大偈	Launch Mechanic	1	1



附錄 B – 續  
APPENDIX B – Cont'd

		編制 Establishment	實際員額 Strength
<b>一般職系</b> <b>General Grade</b>			
高級政務主任	Senior Administrative Officer	1	0
政務主任	Administrative Officer	0	1
總行政主任	Chief Executive Officer	2	2
高級行政主任	Senior Executive Officer	4	3
一級行政主任	Executive Officer I	7	8
二級行政主任	Executive Officer II	11	12
高級庫務會計師	Senior Treasury Accountant	1	2
庫務會計師	Treasury Accountant	3	3
高級會計主任	Senior Accounting Officer	1	1
一級會計主任	Accounting Officer I	1	1
二級會計主任	Accounting Officer II	3	3
總管理參議主任	Chief Management Services Officer	1	1
高級管理參議主任	Senior Management Services Officer	2	2
二級管理參議主任	Management Services Officer II	2	2
高級法定語文主任	Senior Official Languages Officer	1	1
一級法定語文主任	Official Languages Officer I	2	2
二級法定語文主任	Official Languages Officer II	2	2
高級系統經理	Senior Systems Manager	0	1
系統經理	Systems Manager	3	3
一級系統分析／ 程序編製主任	Analyst/Programmer I	6	4
二級系統分析／ 程序編製主任	Analyst/Programmer II	6	7
高級統計師	Senior Statistician	1	1
一級統計主任	Statistical Officer I	1	1
二級統計主任	Statistical Officer II	3	3

附錄 B – 續  
APPENDIX B – Cont'd

		編制 Establishment	實際員額 Strength
<b>一般職系</b> <b>General Grade</b>			
高級土地測量師	Senior Land Surveyor	2	2
土地測量師/ 助理土地測量師	Land Surveyor/ Assistant Land Surveyor	6	5
首席測量主任 (工程)	Principal Survey Officer (Engineering)	1	1
高級測量主任 (工程)	Senior Survey Officer (Engineering)	4	4
測量主任 (工程)/ 見習測量主任 (工程)	Survey Officer (Engineering)/ Survey Officer Trainee (Engineering)	12	11
總技術主任 (製圖)	Chief Technical Officer (Cartographic)	1	1
首席技術主任 (製圖)	Principal Technical Officer (Cartographic)	1	1
高級技術主任 (製圖)	Senior Technical Officer (Cartographic)	6	6
技術主任 (製圖)/ 見習技術主任 (製圖)	Technical Officer (Cartographic)/ Technical Officer Trainee (Cartographic)	9	9
高級電子工程師	Senior Electronics Engineer	1	1
電子工程師/ 助理電子工程師	Electronics Engineer/ Assistant Electronics Engineer	2	2
電子督察	Electronics Inspector	1	1
高級私人秘書	Senior Personal Secretary	1	1
一級私人秘書	Personal Secretary I	9	8
二級私人秘書	Personal Secretary II	16	15
打字員	Typist	2	1
機密檔案室助理	Confidential Assistant	1	1
高級文書主任	Senior Clerical Officer	6	5
文書主任	Clerical Officer	31 + 3 <sup>◆</sup>	26
助理文書主任	Assistant Clerical Officer	80	80
文書助理	Clerical Assistant	120 + 1 <sup>◆</sup>	113
辦公室助理員	Office Assistant	5 + 1 <sup>◆</sup>	4

附錄 B – 續  
APPENDIX B – Cont'd

		編制 Establishment	實際員額 Strength
<b>一般職系</b> <b>General Grade</b>			
總物料供應主任	Chief Supplies Officer	1	1
高級物料供應主任	Senior Supplies Officer	1	0
物料供應主任	Supplies Officer	2	3
助理物料供應主任	Assistant Supplies Officer	1	1
高級物料供應員	Senior Supplies Supervisor	1	1
一級物料供應員	Supplies Supervisor I	2	1
二級物料供應員	Supplies Supervisor II	11	12
助理物料供應員	Supplies Assistant	3	3
物料供應服務員	Supplies Attendant	2	1
繕校員	Calligraphist	2	1
助理空氣調節督察	Assistant Air-Conditioning Inspector	1	1
汽車司機	Motor Driver	4	4
<b>共通職系</b> <b>Common Grade</b>			
總技術主任	Chief Technical Officer	2 + 1 <sup>◆</sup>	1
高級電氣督察	Senior Electrical Inspector	2	2
電氣督察	Electrical Inspector	4	2
助理電氣督察	Assistant Electrical Inspector	1	1
高級機械督察	Senior Mechanical Inspector	7	7
機械督察	Mechanical Inspector	10	9
助理機械督察	Assistant Mechanical Inspector	1	0
小輪船員督導員	Launch Crew Supervisor	3	3
高級小輪船長	Senior Launch Master	56 + 4 <sup>◆</sup>	43
小輪船長	Launch Master	46 + 2 <sup>◆</sup>	55
小輪助理員	Launch Assistant	209 + 1 <sup>◆</sup>	182

附錄 B – 續  
APPENDIX B – Cont'd

		編制 Establishment	實際員額 Strength
<b>共通職系</b> <b>Common Grade</b>			
一級監工	Works Supervisor I	12 + 1 <sup>◆</sup>	6
二級監工	Works Supervisor II	8	11
高級技工	Senior Artisan	38 + 2 <sup>◆</sup>	35
技工	Artisan	68 + 1 <sup>◆</sup>	36
丈量員	Chainman	2 + 1 <sup>◆</sup>	1
二級工人	Workman II	37	36
<b>總計</b>	<b>Total</b>	<b>1 450 + 29<sup>◆</sup></b>	<b>1 296</b>

註釋： ◆ 編外職位  
Note: Supernumerary post

附錄 C  
APPENDIX C

**2018 年海事處訓練組舉辦的課程**  
**Training Courses Conducted by Training Section, Marine Department in 2018**

課程名稱 Course Title	學期(天) Duration (days)	參加學員 <sup>(1)</sup> Target Participants <sup>(1)</sup>	班級數目 Number of Classes	學員數目 Number of Participants
1. 基本小型船舶操縱技術課程 Basic Boat Handling Skills Course	5	SLM, LM	1	6
2. 搜救衛星任務控制中心操作員課程 Cospas-Sarsat Mission Control Centre Operator Course	5	MI I, MI II	1	3
3. 基本航海知識 – 海道測量部主任 Elementary Nautical Knowledge for HO Officers	1	HO Officers	3	34
4. 教育講座(模擬導航實習工作坊) Education Seminar (Workshop on Navigation Simulation)	1	FSD	1	4
5. 全球海事遇險及安全系統(海岸電台操作員證書)課程 Global Maritime Distress and Safety System (GMDSS) (Coast Station Operator Certificate) Course	14	MI I, MI II	1	5
6. 海上救援協調中心全球海上遇險及安全系統課程 Global Maritime Distress and Safety System (GMDSS) in Maritime Rescue Co-ordination Centre (MRCC) Course	11	MI I, MI II	1	3
7. 海上救援協調中心全球海上遇險及安全職訓練課程 Global Maritime Distress and Safety System (GMDSS) On-the-Job Training Course	30	MI I, MI II	1	3
8. 全球海上遇險及安全系統(限用操作員證書課程) Global Maritime Distress and Safety System (GMDSS) (Restricted Operator's Certificate Course)	5	OFCA, MI II	5	30
9. 國際海空海上搜尋救助課程 International Aeronautical and Maritime Search and Rescue (IAMSAR) Course	5	AMC, MO	1	9
10. 新招聘海事主任及助理海事監督導引訓練課程 Induction Training Programme for the Grade of Newly Recruited Marine Officer & Assistant Marine Controller	4	AMC, MO	1	17
11. 本地船舶模擬駕駛操作訓練課程 Local Craft Simulation Training	4	C&E, LM, SLM	3	20
12. 海事督察訓練課程 – 甲部 Marine Inspector Training Course – Part A	30	MI II	2	17
13. 一級海事督察深造課程 Marine Inspector I Enhancement Course	25	MI I	1	6
14. 民安隊海上油污訓練課程 Oil Pollution Course for CAS Staff	2	CAS	2	34
15. 康樂及文化事務署海上油污訓練課程 Oil Pollution Course for LCSD	1	LCSD	1	20
16. 領港員模擬船操縱課程 Pilotage Simulation Course	1	HKPA	4	7
17. 香港水域雷達操作員課程 Radar Operator Course for Hong Kong Waters	7	C&E, FSD, LA, LM, SLM	3	19
18. 船舶排放黑煙(Ringelmann Chart)應用課程 Ringelmann Chart Application Course on Dark Smoke Emission	0.5	MI I, MI II	2	23

附錄 C – 續  
APPENDIX C - Cont'd

課程名稱 Course Title	學期(天) Duration (days)	參加學員 <sup>(1)</sup> Target Participants <sup>(1)</sup>	班級數目 Number of Classes	學員數目 Number of Participants
19. 船舶模擬器導師課程 Ship Simulator Instructor Course	2	MC, MO, SMO	1	4
20. 船隻航行監察服務操作員訓練課程 VTS Operator Training Course for AMC	63	AMC	2	9
21. 船隻航行監察服務在職培訓課程 VTS On-the-Job Training Course	32	AMC	2	9
22. 船隻航行監察服務監督員訓練課程 VTS Supervisor Training Course	3	AMC	1	5
<b>總計 Total</b>			<b>40</b>	<b>287</b>

註釋： (1) 參加課程的機構或海事處職員職位詳列於下表：

Note: Organisations or posts in Marine Department participated in the training courses are listed below:

機構	Organisation	縮寫 Abbreviation
民眾安全服務隊	Civil Aid Service	CAS
香港海關	Customs and Excise Department	C&E
香港消防處	Fire Services Department	FSD
香港領港會	Hong Kong Pilots Association	HKPA
康樂及文化事務署	Leisure and Cultural Services Department	LCSD
香港通訊事務管理局	Office of the Communications Authority	OFCA

海事處職員職位	Post in Marine Department	縮寫 (以斜體表示) Abbreviation (showed in italics)
助理海事監督	Assistant Marine Controller	AMC
海道測量部主任	Hydrographic Office Officers	HO Officers
小輪助理員	Launch Assistant	LA
小輪船長	Launch Master	LM
海事監督	Marine Controller	MC
一級海事督察	Marine Inspector I	MI I
二級海事督察	Marine Inspector II	MI II
海事主任	Marine Officer	MO
高級小輪船長	Senior Launch Master	SLM
高級海事主任	Senior Marine Officer	SMO

**附錄 D**  
**APPENDIX D**

**2018 年海事處訪客**  
**Visitors to the Marine Department, 2018**

海事處於 2018 年接待了以下訪客：

During the year of 2018, the Marine Department hosted the following visitors:

編號 No.	訪問日期 Date of Visit	機構／代表 Organisation/Representative
1.	9.1.2018	機電工程署 Electrical and Mechanical Services Department
2.	18.1.2018	大連海事大學 Dalian Maritime University
3.	28.2.2018	運輸及房屋局局長 Secretary for Transport and Housing
4.	2.3.2018	新加坡民防部隊 Singapore Civil Defense Force
5.	2.3.2018	香港消防處 Hong Kong Fire Services Department
6.	5.3.2018, 9.10.2018, 9.11.2018 and 18.12.2018	水警訓練學校 Marine Police Training School
7.	10.3.2018 and 29.5.2018	民眾安全服務隊 Civil Aid Service
8.	12.3.2018	意大利里雅斯特港口管理局局長 President of the Autorita Portuale del Porto di Trieste, Italy
9.	15.3.2018	校園推廣計劃（蘇浙公學） School Promotion Programme (Kiangsu-Chekiang College)
10.	26.3.2018	校園推廣計劃（羅定邦中學） School Promotion Programme (Law Ting Pong Secondary School)
11.	27.3.2018	公安海警學院 China Maritime Police Academy
12.	28.3.2018	「賽馬會鼓掌·創你程計劃」@ 香港賽馬會（寧波公學及基督教香港信義會） CLAP Programme for Youth @ Jockey Club (Ning Po College and the Evangelical Lutheran Church of Hong Kong)
13.	28.3.2018	Directorate of Public Transportation Services, Istanbul Metropolitan Municipality
14.	18.4.2018 and 30.10.2018	美國駐港澳總領事館 U.S. Consulate General in Hong Kong & Macau
15.	4.5.2018	校園推廣計劃（救世軍卜維廉中學） School Promotion Programme (Salvation Army William Booth Secondary School)
16.	8.5.2018	中國人民解放軍駐港部隊 The People's Liberation Army Hong Kong Garrison
17.	10.5.2018	律政司 Department of Justice
18.	25.5.2018, 25.10.2018 to 26.10.2018	深圳海事局 Shenzhen Maritime Safety Administration

附錄 D - 續  
APPENDIX D - Cont'd

編號 No.	訪問日期 Date of Visit	機構／代表 Organisation/Representative
19.	11.6.2018	韓國駐香港總領事館 The Consulate General of the Republic of Korea in Hong Kong
20.	13.6.2018	校園推廣計劃（香港航海學校） School Promotion Programme (Hong Kong Sea School)
21.	19.6.2018	中華人民共和國交通運輸部（周巍小姐） Ministry of Transport of the People's Republic of China (Ms. ZHOU Wei)
22.	26.6.2018 to 27.6.2018	廣東海事局 Guangdong Maritime Safety Administration
23.	27.6.2018	「友、導向」師友計劃（紡織學會美國商會胡漢輝中學及德雅中學） "Life Buddies" Mentoring Scheme (TIACC Woo Hon Fai Secondary School and Tak Nga Secondary School)
24.	6.7.2018	香港工程師學會 The Hong Kong Institution of Engineers
25.	9.7.2018	校園推廣計劃（將軍澳官立中學） School Promotion Programme (Tseung Kwan O Government Secondary School)
26.	27.8.2018	韓國京畿平澤港灣公社 Gyeonggi Pyeongtaek Port Corporation, Republic of Korea
27.	31.8.2018	香港工程師學會物流及運輸分部 Logistics and Transportation Division of The Hong Kong Institution of Engineers
28.	20.9.2018	中國杯賽事組委會 Organisation Committee of the China Cup
29.	10.10.2018	深圳市人民政府應急管理辦公室 Emergency Management Office of Shenzhen Municipal People's Government
30.	30.10.2018, 23.11.2018 and 12.12.2018	香港領港會有限公司 Hong Kong Pilots Association Limited
31.	5.11.2018	香港航海學校 Hong Kong Sea School
32.	15.11.2018	重慶海事局 Chongqing Maritime Safety Administration
33.	15.11.2018	武漢新港管理委員會 Wuhan New Port Administration Committee
34.	21.11.2018	香港海運週 2018（香港航海學校） Hong Kong Maritime Industry Week 2018 (Hong Kong Sea School)
35.	22.11.2018	小輪業職工會 Small Craft Workers Union
36.	22.11.2018	環境保護署 Environmental Protection Department
37.	23.11.2018	香港海運週 2018（香港物流管理人員協會、香港領港會有限公司及華南拖船有限公司） Hong Kong Maritime Industry Week 2018 (Hong Kong Logistics Management Staff Association, Hong Kong Pilots Association Limited and South China Towing Company Limited)



附錄 D - 續  
APPENDIX D - Cont'd

編號 No.	訪問日期 Date of Visit	機構／代表 Organisation/Representative
38.	27.11.2018	內地與香港公務員交流計劃 Civil Service Exchange Programme with Mainland
39.	5.12.2018	海事訓練學院（海事科技高級文憑） Maritime Services Training Institute (Higher Diploma in Maritime Studies)
40.	11.12.2018	海事訓練學院 Maritime Services Training Institute
41.	14.12.2018	民航處 Civil Aviation Department
42.	18.12.2018	香港城市大學（景祥祜教授 - 燈塔古蹟保護研究項目組） City University of Hong Kong (Prof. Steve Ching - Lighthouse Heritage Research Connections)

**附錄 E**  
**APPENDIX E**

**2018 年刊憲的海事及航運法例**  
**Maritime and Shipping Legislation Gazetted in 2018**

2018 年在憲報刊登的海事及航運法例：  
The maritime and shipping legislation published in the Gazette in 2018:

法例名稱 Title	參考編號 Reference No.
2018 年〈2009 年商船(安全)(修訂)條例〉(生效日期)公告 Merchant Shipping (Safety) (Amendment) Ordinance 2009 (Commencement) Notice 2018	2018 年第 43 號法律公告 L.N. 43 of 2018
2018 年商船(本地船隻)(安全及檢驗)(修訂)規例 Merchant Shipping (Local Vessels) (Safety and Survey) (Amendment) Regulation 2018	2018 年第 44 號法律公告 L.N. 44 of 2018
2018 年商船(安全)(貨船構造及檢驗)(1984 年 9 月 1 日或之後建造的船舶)(修訂)規例 Merchant Shipping (Safety) (Cargo Ship Construction and Survey) (Ships Built On or After 1 September 1984) (Amendment) Regulation 2018	2018 年第 45 號法律公告 L.N. 45 of 2018
2018 年商船(安全)(運載貨物及油類燃料)(修訂)規例 Merchant Shipping (Safety) (Carriage of Cargoes and Oil Fuel) (Amendment) Regulation 2018	2018 年第 46 號法律公告 L.N. 46 of 2018
2018 年商船(安全)(載重線)(修訂)規例 Merchant Shipping (Safety) (Load Line) (Amendment) Regulation 2018	2018 年第 47 號法律公告 L.N. 47 of 2018
2018 年商船(安全)(載重線)(艙面貨物)(修訂)規例 Merchant Shipping (Safety) (Load Lines) (Deck Cargo) (Amendment) Regulation 2018	2018 年第 48 號法律公告 L.N. 48 of 2018
〈商船(安全)(載重線)(船舶長度)規例〉(廢除)規例 Merchant Shipping (Safety) (Load Lines) (Length of Ship) Regulations (Repeal) Regulation	2018 年第 49 號法律公告 L.N. 49 of 2018
2018 年商船(安全)(客船構造)(1984 年 9 月 1 日之前建造的船舶)(修訂)規例 Merchant Shipping (Safety) (Passenger Ship Construction) (Ships Built Before 1 September 1984) (Amendment) Regulation 2018	2018 年第 50 號法律公告 L.N. 50 of 2018
2018 年商船(安全)(客船構造及檢驗)(1984 年 9 月 1 日或之後建造的船舶)(修訂)規例 Merchant Shipping (Safety) (Passenger Ship Construction and Survey) (Ships Built On or After 1 September 1984) (Amendment) Regulation 2018	2018 年第 51 號法律公告 L.N. 51 of 2018
2018 年商船(安全)(貨船的分艙及破艙穩定性)(修訂)規例 Merchant Shipping (Safety) (Subdivision and Damage Stability of Cargo Ships) (Amendment) Regulation 2018	2018 年第 52 號法律公告 L.N. 52 of 2018
2018 年商船(安全)(氣體運輸船)(修訂)規例 Merchant Shipping (Safety) (Gas Carriers) (Amendment) Regulation 2018	2018 年第 74 號法律公告 L.N. 74 of 2018
2018 年商船(防止及控制污染)(費用)(修訂)規例 Merchant Shipping (Prevention and Control of Pollution) (Fees) (Amendment) Regulation 2018	2018 年第 90 號法律公告 L.N. 90 of 2018

**附錄 E - 續**  
**APPENDIX E - Cont'd**

法例名稱 Title	參考編號 Reference No.
商船(控制壓載水及沉積物)規例 <sup>s</sup> Merchant Shipping (Control of Ballast Water and Sediments) Regulation <sup>s</sup>	2018 年第 91 號法律公告 L.N. 91 of 2018
2018 年商船(控制散裝有毒液體物質污染)(修訂)規例 Merchant Shipping (Control of Pollution by Noxious Liquid Substances in Bulk) (Amendment) Regulation 2018	2018 年第 92 號法律公告 L.N. 92 of 2018
2018 年商船(散化規則)(修訂)規例 Merchant Shipping (BCH Code) (Amendment) Regulation 2018	2018 年第 93 號法律公告 L.N. 93 of 2018
2018 年商船(國際散化規則)(修訂)規例 Merchant Shipping (IBC Code) (Amendment) Regulation 2018	2018 年第 94 號法律公告 L.N. 94 of 2018
2018 年商船(海員)(工作及生活條件)(修訂)規例 Merchant Shipping (Seafarers) (Working and Living Conditions) (Amendment) Regulation 2018	2018 年第 174 號法律公告 L.N. 174 of 2018
2018 年〈2016 年商船(海員)(正式航海日誌)(修訂)規例〉(修訂)規例 Merchant Shipping (Seafarers) (Official Log Books) (Amendment) Regulation 2016 (Amendment) Regulation 2018	2018 年第 175 號法律公告 L.N. 175 of 2018
2018 年〈2013 年商船(海員)(修訂)條例〉(生效日期)公告 Merchant Shipping (Seafarers) (Amendment) Ordinance 2013 (Commencement) Notice 2018	2018 年第 176 號法律公告 L.N. 176 of 2018
〈商船(海員)(工作及生活條件)規例〉(生效日期)公告 Merchant Shipping (Seafarers) (Working and Living Conditions) Regulation (Commencement) Notice	2018 年第 177 號法律公告 L.N. 177 of 2018
〈2016 年商船(海員)(家屬糧)(修訂)規例〉(生效日期)公告 Merchant Shipping (Seafarers) (Allotments) (Amendment) Regulation 2016 (Commencement) Notice	2018 年第 178 號法律公告 L.N. 178 of 2018
2018 年〈2016 年商船(海員)(健康及安全：一般責任)(修訂)規例〉(生效日期)公告 Merchant Shipping (Seafarers) (Health and Safety: General Duties) (Amendment) Regulation 2016 (Commencement) Notice 2018	2018 年第 179 號法律公告 L.N. 179 of 2018
〈2016 年商船(海員)(工作時數)(修訂)規例〉(生效日期)公告 Merchant Shipping (Seafarers) (Hours of Work) (Amendment) Regulation 2016 (Commencement) Notice	2018 年第 180 號法律公告 L.N. 180 of 2018
〈2016 年商船(海員)(船員艙房)(修訂)規例〉(生效日期)公告 Merchant Shipping (Seafarers) (Crew Accommodation) (Amendment) Regulation 2016 (Commencement) Notice	2018 年第 181 號法律公告 L.N. 181 of 2018
〈2016 年商船(海員)(正式航海日誌)(修訂)規例〉(生效日期)公告 Merchant Shipping (Seafarers) (Official Log Books) (Amendment) Regulation 2016 (Commencement) Notice	2018 年第 182 號法律公告 L.N. 182 of 2018

附錄 E - 續  
APPENDIX E - Cont'd

法例名稱 Title	參考編號 Reference No.
〈2016年商船(海員)(遣返)(修訂)規例〉(生效日期)公告 Merchant Shipping (Seafarers) (Repatriation) (Amendment) Regulation 2016 (Commencement) Notice	2018 年第 183 號法律公告 L.N. 183 of 2018
〈2016年商船(海員)(安全人員和意外及危險事故報告)(修訂)規例〉(生效日期)公告 Merchant Shipping (Seafarers) (Safety Officials and Reporting of Accidents and Dangerous Occurrences) (Amendment) Regulation 2016 (Commencement) Notice	2018 年第 184 號法律公告 L.N. 184 of 2018
〈2016年商船(海員)(醫療物品)(修訂)規例〉(生效日期)公告 Merchant Shipping (Seafarers) (Medical Stores) (Amendment) Regulation 2016 (Commencement) Notice	2018 年第 185 號法律公告 L.N. 185 of 2018
〈2016年商船(海員)(安全工作守則)(修訂)規例〉(生效日期)公告 Merchant Shipping (Seafarers) (Code of Safe Working Practices) (Amendment) Regulation 2016 (Commencement) Notice	2018 年第 186 號法律公告 L.N. 186 of 2018
〈《商船(海員)(糧食和水)規例》(廢除)規例〉(生效日期)公告 Merchant Shipping (Seafarers) (Provisions and Water) Regulation (Repeal) Regulation (Commencement) Notice	2018 年第 187 號法律公告 L.N. 187 of 2018
〈《商船(海員)(駐船醫生)規例》(廢除)規例〉(生效日期)公告 Merchant Shipping (Seafarers) (Ships' Doctors) Regulation (Repeal) Regulation (Commencement) Notice	2018 年第 188 號法律公告 L.N. 188 of 2018
〈2016年商船(海員)(費用)(修訂)規例〉(生效日期)公告 Merchant Shipping (Seafarers) (Fees) (Amendment) Regulation 2016 (Commencement) Notice	2018 年第 189 號法律公告 L.N. 189 of 2018
商船(安全)(輻照核燃料貨物)規例 Merchant Shipping (Safety) (INF Cargo) Regulation	2018 年第 214 號法律公告 L.N. 214 of 2018
2018年商船(安全)(危險貨物及海洋污染物)(修訂)規例 Merchant Shipping (Safety) (Dangerous Goods and Marine Pollutants) (Amendment) Regulation 2018	2018 年第 246 號法律公告 L.N. 246 of 2018
2018年商船(本地船隻)(一般)(修訂)規例 Merchant Shipping (Local Vessels) (General) (Amendment) Regulation 2018	2018 年第 247 號法律公告 L.N. 247 of 2018
商船(安全)(構造及檢驗)規例 Merchant Shipping (Safety) (Construction and Survey) Regulation	2018 年第 248 號法律公告 L.N. 248 of 2018
商船(安全)(消防裝置及防火)規例 Merchant Shipping (Safety) (Fire-fighting Appliances and Fire Protection) Regulation	2018 年第 249 號法律公告 L.N. 249 of 2018
2018年商船(安全)(貨船構造及檢驗)(1984年9月1日之前建造的船舶)(修訂)規例 Merchant Shipping (Safety) (Cargo Ship Construction and Survey) (Ships Built Before 1 September 1984) (Amendment) Regulation 2018	2018 年第 250 號法律公告 L.N. 250 of 2018

**附錄 E - 續**  
**APPENDIX E - Cont'd**

<b>法例名稱 Title</b>	<b>參考編號 Reference No.</b>
2018 年商船(安全)(貨船構造及檢驗)(1984 年 9 月 1 日或之後建造的船舶)(修訂)(第 2 號)規例 Merchant Shipping (Safety) (Cargo Ship Construction and Survey) (Ships Built On or After 1 September 1984) (Amendment) (No. 2) Regulation 2018	2018 年第 251 號法律公告 L.N. 251 of 2018
2018 年商船(安全)(防火)(1980 年 5 月 25 日之前建造的船舶)(修訂)規例 Merchant Shipping (Safety) (Fire Protection) (Ships Built Before 25 May 1980) (Amendment) Regulation 2018	2018 年第 252 號法律公告 L.N. 252 of 2018
2018 年商船(安全)(消防裝置)(1980 年 5 月 25 日或之後但 1984 年 9 月 1 日之前建造的船舶)(修訂)規例 Merchant Shipping (Safety) (Fire Appliances) (Ships Built On or After 25 May 1980 but Before 1 September 1984) (Amendment) Regulation 2018	2018 年第 253 號法律公告 L.N. 253 of 2018
2018 年商船(安全)(防火)(1984 年 9 月 1 日或之後建造的船舶)(修訂)規例 Merchant Shipping (Safety) (Fire Protection) (Ships Built On or After 1 September 1984) (Amendment) Regulation 2018	2018 年第 254 號法律公告 L.N. 254 of 2018
2018 年商船(安全)(客船構造)(1984 年 9 月 1 日之前建造的船舶)(修訂)(第 2 號)規例 Merchant Shipping (Safety) (Passenger Ship Construction) (Ships Built Before 1 September 1984) (Amendment) (No. 2) Regulation 2018	2018 年第 255 號法律公告 L.N. 255 of 2018
2018 年商船(安全)(客船構造及檢驗)(1984 年 9 月 1 日或之後建造的船舶)(修訂)(第 2 號)規例 Merchant Shipping (Safety) (Passenger Ship Construction and Survey) (Ships Built On or After 1 September 1984) (Amendment) (No. 2) Regulation 2018	2018 年第 256 號法律公告 L.N. 256 of 2018
2018 年商船(安全)(貨船安全設備檢驗)(修訂)規例 Merchant Shipping (Safety) (Cargo Ship Safety Equipment Survey) (Amendment) Regulation 2018	2018 年第 257 號法律公告 L.N. 257 of 2018
2018 年商船(安全)(貨船的分艙及破艙穩定性)(修訂)(第 2 號)規例 Merchant Shipping (Safety) (Subdivision and Damage Stability of Cargo Ships) (Amendment) (No. 2) Regulation 2018	2018 年第 258 號法律公告 L.N. 258 of 2018

註釋： § 該法例自運輸及房屋局局長另以憲報公告指定的日期起實施。

Note: The legislation is to come into operation on a date to be appointed by the Secretary for Transport and Housing by separate notice published in the Gazette.

附錄 F  
APPENDIX F

2018 年輔航設備  
Aids to Navigation, 2018

A. 使用中的輔航設備  
Aids to Navigation in Use

輔航設備	Aids to Navigation	截至 2018 年 12 月 31 日 As at 31.12.2018
1. 燈浮標	Light Buoy	136
2. 燈航標	Light Beacon	420
3. 雷達應答標	Racon	3
4. 霧角	Fog Horn	7

B. 本年新設的輔航裝置  
New Aids Established during the Year

1. 南航 1 Southern 1	一個以太陽能操作的燈浮標於 2018 年 2 月 1 日設立，用以標示南航道的界線。 A solar power operated light buoy was established to mark the Southern Fairway on 1.2.2018.
2. 6 (大鵬灣) 6 (at Mirs Bay)	一個以太陽能操作的燈浮標於 2018 年 6 月 5 日設立，用以標示大鵬灣的界線。 A solar power operated light buoy was established to mark the boundary of Mirs Bay on 5.6.2018.
3. 2 (大鵬灣) 2 (at Mirs Bay)	兩個以太陽能操作的燈浮標於 2018 年 6 月 6 日設立，用以標示大鵬灣的界線。 Two solar power operated light buoys were established to mark the boundary of Mirs Bay on 6.6.2018.
4. 4 (大鵬灣) 4 (at Mirs Bay)	
5. 雷達應答標 Racon	於 2018 年 11 月 27 日，香港接線的主跨部分設置 2 個雷達應答標，以標示其範圍。 On 27.11.2018, two racons were established to mark the main span of the Hong Kong Link Road.

附錄 F – 續  
APPENDIX F – Cont'd

**B. 本年新設的輔航裝置 (續)**  
**New Aids Established during the Year (Cont'd)**

6. 港珠澳大橋墩 1 HKLR Pier 1	<p>於 2018 年 11 月 27 日，香港接線的主跨部分設置 16 個燈航標，以標示其範圍。</p> <p>On 27.11.2018, 16 light beacons were established to demarcate the main span of the Hong Kong Link Road.</p>
7. 港珠澳大橋墩 2 HKLR Pier 2	
8. 港珠澳大橋墩 3 HKLR Pier 3	
9. 港珠澳大橋墩 4 HKLR Pier 4	
10. 港珠澳大橋東北 1 綠 HKLR N.E. 1 Green	
11. 港珠澳大橋東北 1 白 HKLR N.E. 1 White	
12. 港珠澳大橋東北 1 紅 HKLR N.E. 1 Red	
13. 港珠澳大橋西南 1 綠 HKLR S.W. 1 Green	
14. 港珠澳大橋西南 1 白 HKLR S.W. 1 White	
15. 港珠澳大橋西南 1 紅 HKLR S.W. 1 Red	
16. 港珠澳大橋西南 2 紅 HKLR S.W. 2 Red	
17. 港珠澳大橋西南 2 白 HKLR S.W. 2 White	
18. 港珠澳大橋西南 2 綠 HKLR S.W. 2 Green	
19. 港珠澳大橋東北 2 紅 HKLR N.E. 2 Red	
20. 港珠澳大橋東北 2 白 HKLR N.E. 2 White	
21. 港珠澳大橋東北 2 綠 HKLR N.E. 2 Green	

附錄 F – 續  
APPENDIX F – Cont'd

C. 本年拆除的輔航裝置  
Aids Discontinued during the Year

1.	機場 3 Airport 3	這個燈浮標於 2018 年 2 月 5 日永久終止服務。 The light buoy was permanently withdrawn from service on 5.2.2018.
2.	大利橋北 1 Tai Lei Bridge North 1	24 個燈航標於 2018 年 8 月 1 日永久終止服務。 24 light beacons were permanently withdrawn from service on 1.8.2018.
3.	大利橋北 2 Tai Lei Bridge North 2	
4.	大利橋北 3 Tai Lei Bridge North 3	
5.	大利橋北 4 Tai Lei Bridge North 4	
6.	大利橋北 5 Tai Lei Bridge North 5	
7.	大利橋北 6 Tai Lei Bridge North 6	
8.	大利橋北 7 Tai Lei Bridge North 7	
9.	大利橋北 8 Tai Lei Bridge North 8	
10.	大利橋北 9 Tai Lei Bridge North 9	
11.	大利橋北 10 Tai Lei Bridge North 10	
12.	大利橋北 11 Tai Lei Bridge North 11	
13.	大利橋北 12 Tai Lei Bridge North 12	
14.	大利橋南 1 Tai Lei Bridge South 1	
15.	大利橋南 2 Tai Lei Bridge South 2	
16.	大利橋南 3 Tai Lei Bridge South 3	
17.	大利橋南 4 Tai Lei Bridge South 4	
18.	大利橋南 5 Tai Lei Bridge South 5	



**附錄 F – 續**  
**APPENDIX F – Cont'd**

**C. 本年拆除的輔航裝置 (續)**

**Aids Discontinued during the Year (Cont'd)**

19. 大利橋南 6 Tai Lei Bridge South 6	24 個燈航標於 2018 年 8 月 1 日永久終止服務。 24 light beacons were permanently withdrawn from service on 1.8.2018.
20. 大利橋南 7 Tai Lei Bridge South 7	
21. 大利橋南 8 Tai Lei Bridge South 8	
22. 大利橋南 9 Tai Lei Bridge South 9	
23. 大利橋南 10 Tai Lei Bridge South 10	
24. 大利橋南 11 Tai Lei Bridge South 11	
25. 大利橋南 12 Tai Lei Bridge South 12	

**D. 本年遭損毀的輔航裝置**

**Aids Damaged during the Year**

下列燈浮標及燈航標遭損毀，航標燈熄滅。

The light buoys and light beacons listed below were damaged and unlit.

月份	Month	名稱	Name
1 月	January	北航 2	Northern 2
		屯門	Tuen Mun
		西檢	W Q
4 月	April	釣魚灣碼頭	Angler's Beach Pier
5 月	May	海下灣 B	HHW-B
6 月	June	查氏文	Chesterman
		稔灣	Nim Wan
7 月	July	奇力西	Kellett West
		藍塘 1	TCS 1
		藍塘 3	TCS 3
		氣象 10	Weather 10
		油麻地 1	Yau Ma Tei 1

**附錄 F – 續**  
**APPENDIX F – Cont'd**

**D. 本年遭損毀的輔航裝置 (續)**  
**Aids Damaged during the Year (Cont'd)**

下列燈浮標及燈航標遭損毀，航標燈熄滅。(續)  
The light buoys and light beacons listed below were damaged and unlit. (Cont'd)

月份	Month	名稱	Name
9 月	September	香港仔南 1	Aberdeen South 1
		香港仔南 2	Aberdeen South 2
		柴灣 1	Chai Wan 1
		柴灣 2	Chai Wan 2
		杉排	Cham Pai
		飯甌洲	Fan Tsang Chau
		喜靈洲 6	Hei Ling Chau 6
		南丫排西南	Lamma Patch SW
		博寮 2	LCS 2
		仔仔排	Ma Tsai Pai
		澳仔	O Tsai
		南丫電力 4	P 4
		龍珠島	Pearl Island
		醉酒灣	Rambler Channel
		沙螺灣	Sha Lo Wan
		石鼓洲	Shek Kwu Chau
		銀礦灣	Silver Mine Bay
氣象 5	Weather 5		
黃茅洲	Wong Mau Chau		
鹽田仔 1	Yim Tin Tsai 1		
10 月	October	大澳 3	Tai O 3
		鹽田仔 2	Yim Tin Tsai 2
11 月	November	南丫電力 1	P 1

**附錄 F – 續**  
**APPENDIX F – Cont'd**

**E. 本年改進的輔航裝置**  
**Aids Reprovisioned during the Year**

1. 下列燈航標已換上全新現代化器材，用以提高光達距離。  
The light beacons listed below were upgraded with modern equipment for better luminous range.

月份	Month	名稱	Name
1 月	January	下徑碼頭	Ha Keng Pier
2 月	February	石鼓洲碼頭	Shek Kwu Chau Pier
3 月	March	牙鷹排	Nga Ying Pai
4 月	April	大澳 2	Tai O 2
7 月	July	東涌橋 3	Tung Chung Bridge 3
		東涌橋 6	Tung Chung Bridge 6
11 月	November	青馬橋北紅	Tsing Ma Bridge North Red
12 月	December	沙螺灣渡輪碼頭	Sha Lo Wan Ferry Pier

2. 下列燈浮標及燈航標已由全新現代化器材取代，用以提高其可靠性。  
The light buoys and light beacons listed below were replaced with modern equipment for higher reliability.

月份	Month	名稱	Name
1 月	January	赤徑碼頭	Chek Keng Pier
		高流灣碼頭	Ko Lau Wan Pier
		東涌橋 1	Tung Chung Bridge 1
		東涌橋 2	Tung Chung Bridge 2
		東涌橋 8	Tung Chung Bridge 8
		東涌橋 10	Tung Chung Bridge 10
3 月	March	伙頭墳洲碼頭	Fo Tau Fan Chau Pier
4 月	April	鷓鴣排	Lo Chi Pai
		孖仔排	Ma Tsai Pai
		斬竹灣	Tsam Chuk Wan
5 月	May	長洲 A	Cheung Chau A
		塔門新碼頭	Tap Mun New Pier
6 月	June	博寮 1	LCS 1
		老虎吊排	Lo Fu Tiu Pai
		港澳 2	MFT 2
9 月	September	藍塘 1	TCS 1
		東涌橋 4	Tung Chung Bridge 4

附錄 F – 續  
APPENDIX F – Cont'd

E. 本年改進的輔航裝置 (續)  
Aids Reprovisioned during the Year (Cont'd)

2. 下列燈浮標及燈航標已由全新現代化器材取代，用以提高其可靠性。(續)  
The light buoys and light beacons listed below were replaced with modern equipment for higher reliability. (Cont'd)

月份	Month	名稱	Name
10月	October	龍珠島	Pearl Island
		土瓜灣 3	To Kwa Wan 3
		科大	U.S.T.
12月	December	大廟灣碼頭	Joss House Bay Pier
		北角消防局東碼頭	North Point FSD East Pier
		北角消防局西碼頭	North Point FSD West Pier
		大排咀碼頭	Tai Pai Tsui Pier
		汀九橋東綠	Ting Kau Bridge East Green
		龍鼓	Urmston

3. 下列燈浮標及燈航標已更換太陽能電池，用以提高航標的可靠性。  
The solar batteries of the light buoys and light beacons listed below were renewed in order to increase reliability.

月份	Month	名稱	Name
1月	January	青衣舊碼頭西北面	Ex Tsing Yi Ferry Pier NW End
		佛堂門	Fat Tong Mun
		廈門灣碼頭	Hap Mun Wan Pier
		喜靈洲 1	Hei Ling Chau 1
		龍山排	Lung Shan Pai
		萬角咀碼頭	Man Kok Tsui Pier
		大利碼頭	Tai Lei Pier
		大頭洲碼頭	Tai Tau Chau Pier
		青馬橋墩 2	Tsing Ma Bridge Pier 2
		黃花排	Wong Fa Pai
2月	February	鶴咀	Cape D'Aguilar
		青洲	Green Island
		石角咀	Shek Kok Tsui
		大欖水警碼頭	Tai Lam Marine Police Pier
		油麻地 1	Yau Ma Tei 1

**附錄 F – 續**  
**APPENDIX F – Cont'd**

**E. 本年改進的輔航裝置 (續)**

**Aids Reprovisioned during the Year (Cont'd)**

3. 下列燈浮標及燈航標已更換太陽能電池，用以提高航標的可靠性。(續)

The solar batteries of the light buoys and light beacons listed below were renewed in order to increase reliability. (Cont'd)

月份	Month	名稱	Name
3 月	March	聖士提反灣碼頭	ST. Stephen's Beach Pier
		黃竹角	Wong Chuk Kok
4 月	April	飯甌洲	Fan Tsang Chau
		龍鼓洲	Lung Kwu Chau
		大澳 2	Tai O 2
5 月	May	鶴咀 A	CD-A
		長洲	Cheung Chau
		長洲 2	Cheung Chau 2
		海下灣 B	HHW-B
		麻南笏碼頭	Ma Lam Wat Pier
		龍珠島	Pearl Island
		海上救援西局 1	Sea Rescue West Station 1
		沙洲	Sha Chau
6 月	June	燈籠洲	Tang Lung Chau
		北長洲石北	Adamasta Rock N
		磨刀-E	BMP-E
		中航	Central
		基準石	Datum Rock
		喜靈洲 2	Hei Ling Chau 2
		喜靈洲 8	Hei Ling Chau 8
		啓德 1	KT 1
		博寮 1	LCS 1
青馬橋墩 4	Tsing Ma Bridge Pier 4		
		踏石角	TSK

附錄 F – 續  
APPENDIX F – Cont'd

E. 本年改進的輔航裝置 (續)

**Aids Requisitioned during the Year (Cont'd)**

3. 下列燈浮標及燈航標已更換太陽能電池，用以提高航標的可靠性。(續)  
The solar batteries of the light buoys and light beacons listed below were renewed in order to increase reliability. (Cont'd)

月份	Month	名稱	Name
7月	July	青山 9	CP 9
		蜆排	Hin Pai
		南丫排東北	Lamma Patch NE
		火藥洲	Magazine Island
		望東灣村碼頭	Mong Tung Wan Tsuen Pier
		沙田海	Shatin Hoi
		黃麻角	Wong Ma Kok
		烏溪沙碼頭	Wu Kai Sha Pier
8月	August	機場 1	Airport 1
		爛角咀	Black Point
		柴灣 1	Chai Wan 1
		長洲碼頭	Cheung Chau Pier
		青山 4	CP 4
		狗虱灣 1	K S W 1
		狗虱灣 5	K S W 5
		狗虱灣 6	K S W 6
		鹿頸碼頭	Luk Keng Pier
		南堂村新碼頭	Nam Tong Tsuen New Pier
		醉酒灣 2	Rambler Channel 2
		深井碼頭	Sham Tseng Pier
		石鼓洲	Shek Kwu Chau
沙龍 E	SLMP E		
9月	September	下棚	Ha Pang
		北角新村碼頭	Pak Kok San Tsuen Pier
		三家村 2	Sam Ka Tsuen 2

**附錄 F – 續**  
**APPENDIX F – Cont'd**

**E. 本年改進的輔航裝置 (續)**  
**Aids Reprovisioned during the Year (Cont'd)**

3. 下列燈浮標及燈航標已更換太陽能電池，用以提高航標的可靠性。(續)  
The solar batteries of the light buoys and light beacons listed below were renewed in order to increase reliability. (Cont'd)

月份	Month	名稱	Name
10 月	October	北長洲石	Adamasta Rock
		銅鑼灣 4	Causeway Bay 4
		長洲 B	Cheung Chau B
		東芝麻灣	East Chi Ma Wan
		大嶼山東南	Lantau SE
		稔樹灣碼頭	Nim Shue Wan Pier
		布袋澳新碼頭	Po Toi O New Pier
		筲箕灣 1	Shau Kei Wan 1
		藍塘 1	TCS 1
		土瓜灣 2	To Kwa Wan 2
		土瓜灣 3	To Kwa Wan 3
11 月	November	香港仔西	Aberdeen West
		銅鑼灣 2	Causeway Bay 2
		中港 2	CFT 2
		長洲 1	Cheung Chau 1
		佛堂洲	Fat Tong Chau
		喜靈洲 5	Hei Ling Chau 5
		九龍灣 4	Kowloon Bay 4
		交椅洲 B	KYC-B
		一尺石	One Foot Rock
		白沙頭洲	Pak Sha Tau Chau
		香港內河碼頭 4	RTT 4
		海上救援東局 1	Sea Rescue East Station 1
		沙龍 C	SLMP C
大埔滘碼頭	Tai Po Kau Pier		
黃石碼頭	Wong Shek Pier		

**附錄 F – 續**  
**APPENDIX F – Cont'd**

**E. 本年改進的輔航裝置 (續)**  
**Aids Requisitioned during the Year (Cont'd)**

3. 下列燈浮標及燈航標已更換太陽能電池，用以提高航標的可靠性。(續)  
The solar batteries of the light buoys and light beacons listed below were renewed in order to increase reliability. (Cont'd)

月份	Month	名稱	Name
12 月	December	伙頭墳洲	Fo Tau Fan Chau
		觀塘公眾碼頭	Kwun Tong Public Pier
		海軍基地	Naval Base
		北交椅洲	North Kau Yi Chau
		平洲-B	PC-B
		平洲-C	PC-C
		散石灣碼頭	San Shek Wan Pier
		筲箕灣 5	Shau Kei Wan 5
		小鴉洲村碼頭	Siu A Chau Tsuen Pier
		大排咀碼頭	Tai Pai Tsui Pier
		龍鼓	Urmston
		西檢	W Q



**附錄 F – 續**  
**APPENDIX F – Cont'd**

**E. 本年改進的輔航裝置 (續)**

**Aids Reprovided during the Year (Cont'd)**

4. 下列燈浮標及燈航標的太陽能發電板數目已增加／更換，用以提高航標的可靠性。  
The numbers of solar panel of the light buoys and light beacons listed below were increased/replaced to enhance reliability.

月份	Month	名稱	Name
3 月	March	鴨脷排	Ap Lei Pai
		爛角咀	Black Point
4 月	April	大浪排	Tai Long Pai
		大澳 2	Tai O 2
5 月	May	南丫電力 4	P 4
6 月	June	喜靈洲 2	Hei Ling Chau 2
		踏石角	TSK
8 月	August	狗虱灣 1	K S W 1
9 月	September	馬灣碼頭	Ma Wan Pier
10 月	October	機場 6	Airport 6
		青衣舊碼頭西北面	Ex Tsing Yi Ferry Pier NW End
		布袋澳碼頭	Po Toi O Pier
		筲箕灣 1	Shau Kei Wan 1
		藍塘 1	TCS 1
11 月	November	長洲 5	Cheung Chau 5
		喜靈洲 3	Hei Ling Chau 3
		一尺石	One Foot Rock
		西貢公眾碼頭西南	Sai Kung Public Pier SW
		將軍澳 1	Tseung Kwan O 1
12 月	December	沙螺灣碼頭	Sha Lo Wan Pier
		筲箕灣 5	Shau Kei Wan 5
		大排咀碼頭	Tai Pai Tsui Pier

附錄 F – 續  
APPENDIX F – Cont'd

F. 輔航燈與輔航設備工場員工比例

Ratio of Aids to Staff of Aids to Navigation Unit Workshop

年份 Year	輔航燈 Aids		輔航設備工場員工 <sup>(1)</sup> Staff of Aids to Navigation Unit Workshop <sup>(1)</sup>		比例 Ratio  (c) = (a)/(b)
	數目 Number (a)	變動百分率 Percentage Change	數目 Number (b)	變動百分率 Percentage Change	
1999	463	+7.2%	27	-6.9%	17.1
2000	468	+1.1%	27	0%	17.3
2001	482	+3.0%	25	-7.4%	19.3
2002	483	+0.2%	27	+8.0%	17.9
2003	497	+2.9%	27	0%	18.4
2004	509	+2.4%	27	0%	18.9
2005	518	+1.8%	25	-7.4%	20.7
2006	529	+2.1%	23	-8.0%	23.0
2007	533	+0.8%	23	0%	23.2
2008	536	+0.6%	24	+4.3%	22.3
2009	540	+0.7%	23	-4.2%	23.5
2010	543	+0.6%	24	+4.3%	22.6
2011	541	-0.4%	23	-4.2%	23.5
2012	539	-0.4%	22	-4.3%	24.5
2013	542	+0.6%	20	-9.1%	27.1
2014	546	+0.7%	20	0%	27.3
2015	544	-0.4%	19	-5.0%	28.6
2016	554	+1.8 %	19	0%	29.2
2017	561	+1.3 %	21	+10.5%	26.7
2018	556	-0.9%	23	+9.5%	24.2

註釋： (1) 不包括負責在香港水域範圍內看管繫船設備／檢修浮泡的 5 位員工。

Note: Excluding five staff who are responsible for looking after the mooring facilities/overhaul of buoys within Hong Kong waters.