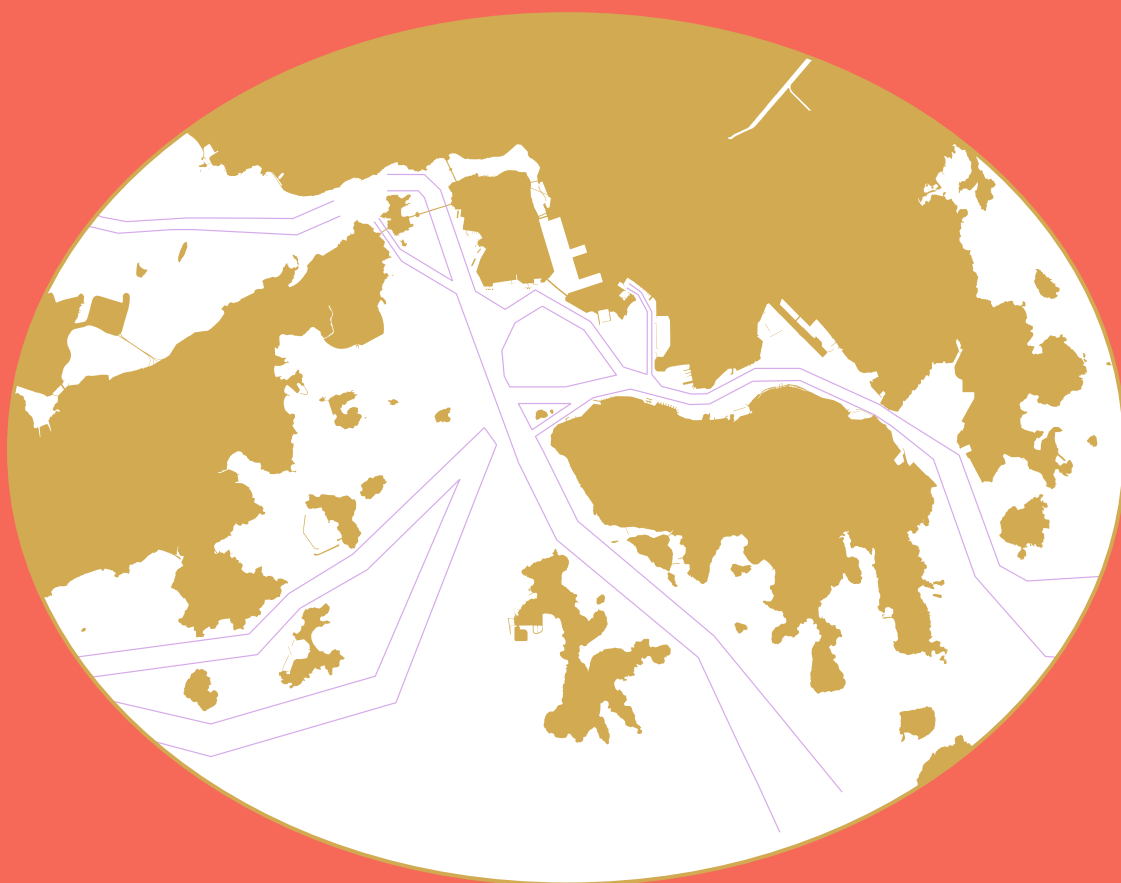


香港港口統計年報

2017

Port of Hong Kong
Statistical Tables



中華人民共和國香港特別行政區海事處
Marine Department
Hong Kong Special Administrative Region
People's Republic of China

香港港口統計年報

PORT OF HONG KONG STATISTICAL TABLES

2017

有關本刊物的查詢，請聯絡：

海事處 策劃、發展協調及港口保安部 統計組

地址：香港中環統一碼頭道 38 號

海港政府大樓 23 樓 2307 室

電話：(852) 2852 3659 圖文傳真：(852) 2542 4638

電郵：st-sec@mardep.gov.hk

Enquiries about this publication can be directed to:

Statistics Section

Planning, Development & Port Security Branch

Marine Department

Address: Room 2307, 23/F, Harbour Building,
38 Pier Road, Central, Hong Kong.

Tel.: (852) 2852 3659 Fax: (852) 2542 4638

E-mail: st-sec@mardep.gov.hk

海事處網站

Website of the Marine Department

<https://www.mardep.gov.hk/>

同心協力，促進卓越海事服務

We are One in Promoting Excellence in Marine Services

目錄
CONTENTS

	頁數 Page No.
註釋 EXPLANATORY NOTES	iv - viii
摘要 SUMMARY	
2012 年至 2017 年主要港口統計數字 Principal Port Statistics for 2012 - 2017	ix
第一部 PART I	
港口活動 Port Activities	
<i>抵港／離港的船次</i> <i>Vessel Arrivals/Departures</i>	
表 1 2017 年 按主要停泊地點分析抵港遠洋輪船的船次 TABLE 1 Ocean Vessel Arrivals by Main Berthing Location, 2017	1
表 2 2017 年 按主要停泊地點分析離港遠洋輪船的船次 TABLE 2 Ocean Vessel Departures by Main Berthing Location, 2017	2
表 3 2017 年 按船舶類型分析抵港船舶的船次 TABLE 3 Vessel Arrivals by Ship Type, 2017	3
表 4 2017 年 按船旗分析抵港船舶的船次 TABLE 4 Vessel Arrivals by Flag, 2017	4 - 5
表 5 2017 年 按船旗分析曾停靠香港的船舶數目和淨註冊噸位 TABLE 5 Number and NRT of Vessels Calling Hong Kong by Flag, 2017	6 - 7
表 6 2017 年 按選定船舶類型分析離港船舶的平均在港停留時間 TABLE 6 Average Time in Port for Vessels Departing Hong Kong by Selected Ship Type, 2017	8
表 7 2017 年 在葵青貨櫃碼頭處理貨櫃的遠洋輪船統計數字 TABLE 7 Statistics on Ocean Vessels with Containers Handled at Kwai Tsing Container Terminals, 2017	9
表 8 2017 年 按夏季吃水分析抵港遠洋輪船的船次 TABLE 8 Ocean Vessel Arrivals by Summer Draft, 2017	10
表 9 2017 年 按船舶總長度分析抵港遠洋輪船的船次 TABLE 9 Ocean Vessel Arrivals by Vessel Length Overall, 2017	10
表 10 2017 年 按主要來港原因分析抵港遠洋輪船的船次 TABLE 10 Ocean Vessel Arrivals by Main Reason of Call, 2017	11
表 11 2017 年 按停泊地點及有否目的地分析抵港郵輪船次 TABLE 11 Cruise Arrivals by Berthing Location by Whether the Trip with Destination, 2017	12
表 12 2017 年 跨境客運碼頭的抵港及離港航次統計數字 TABLE 12 Statistics on Vessel Arrivals and Departures at Cross-boundary Ferry Terminals, 2017	13
表 13 2017 年 按船舶類型分析香港過境船舶的船次 TABLE 13 Number of Vessel Trips Transit Hong Kong by Ship Type, 2017	14

客運量

Passenger Throughput

	<p>表 14 2017 年 按跨境客運碼頭分析客運量</p> <p>TABLE 14 Passenger Throughput by Cross-boundary Ferry Terminal, 2017</p>	15
	<p>表 15 2017 年 按航線分析抵港及離港乘客人次</p> <p>TABLE 15 Passenger Arrivals and Departures by Route, 2017</p>	16 - 17

港口貨櫃／貨物吞吐量

Port Container/Cargo Throughput

	<p>表 16 2017 年 按主要貨物裝卸地點分析貨櫃吞吐量</p> <p>TABLE 16 Container Throughput by Main Cargo Handling Location, 2017</p>	18
	<p>表 17 2017 年 按葵青貨櫃碼頭以外的主要貨物裝卸地點分析貨櫃吞吐量</p> <p>TABLE 17 Container Throughput by Main Cargo Handling Location Other than Kwai Tsing Container Terminals, 2017</p>	19
	<p>表 18 2017 年 按貨物種類及運輸方式劃分的裝卸港口貨物</p> <p>TABLE 18 Port Cargo Discharged/Loaded by Cargo Type and Mode of Transport, 2017</p>	20

第二部
PART II

港口服務及管理
Port Services and Control

	<p>表 19 海港繫泊浮泡統計數字</p> <p>TABLE 19 Harbour Mooring Buoys Statistics</p>	21
	<p>表 20 2017 年 按分布地點分析香港私人繫泊設備數目</p> <p>TABLE 20 Number of Private Moorings Laid in Hong Kong by Location, 2017</p>	22 – 23
	<p>表 21 碇泊處一覽 (截至 2017 年年底)</p> <p>TABLE 21 List of Anchorages (as at end 2017)</p>	24 – 25
	<p>表 22 避風塘一覽 (截至 2017 年年底)</p> <p>TABLE 22 List of Typhoon Shelters (as at end 2017)</p>	26
	<p>表 23 公眾貨物裝卸區一覽 (截至 2017 年年底)</p> <p>TABLE 23 List of Public Cargo Working Areas (as at end 2017)</p>	26
	<p>表 24 垃圾收集、油污和檢控個案統計數字</p> <p>TABLE 24 Refuse Collection, Oil Pollution and Prosecution Statistics</p>	27
	<p>表 25 按噸位等級分析香港領牌船隻 (截至 2017 年年底)</p> <p>TABLE 25 Hong Kong Licensed Vessels by Tonnage Classification (as at end 2017)</p>	28 - 29

		頁數 Page No.
第三部	船舶服務	
PART III	Shipping Services	
表 26	船舶安全監督統計數字	
TABLE 26	Ship Safety Statistics	30 - 32
表 27	本地船隻安全／海事工業安全／海事意外統計數字	
TABLE 27	Local Vessels Safety/Marine Industrial Safety/Marine Accidents Statistics	33 - 38
表 28	海員發證、註冊和僱用統計數字	
TABLE 28	Seafarers' Certification, Registration and Employment Statistics	39 - 45
表 29	香港註冊船舶統計數字	
TABLE 29	Statistics on Ships Registered in Hong Kong	46 - 47
表 30	政府船隊統計數字	
TABLE 30	Government Fleet Statistics	48
表 31	政府船舶所屬部門及可用率情況 (截至 2017 年年底)	
TABLE 31	Departmental Ownership and Availabilities of Government Vessels (as at end 2017)	49
第四部	附錄	
PART IV	Appendices	
附錄 A	海事處組織架構圖 (截至 2017 年年底)	
APPENDIX A	Organisation Chart of the Marine Department (as at end 2017)	A1
附錄 B	海事處的編制和實際員額 (截至 2017 年年底)	
APPENDIX B	Establishment and Strength of the Marine Department (as at end 2017)	A2 – A6
附錄 C	2017 年 海事處訓練組舉辦的課程	
APPENDIX C	Training Courses Conducted by Training Section, Marine Department in 2017	A7 – A8
附錄 D	2017 年 海事處訪客	
APPENDIX D	Visitors to the Marine Department, 2017	A9 – A11
附錄 E	2017 年 刊憲的海事及航運法例	
APPENDIX E	Maritime and Shipping Legislation Gazetted in 2017	A12 – A13
附錄 F	2017 年 輔航設備	
APPENDIX F	Aids to Navigation, 2017	A14 – A22

1. 簡介

《香港港口統計年報》是香港海事處編製的港口及海事統計資料一覽表。這本年報輯錄以下統計數字和資料：

- 抵港／離港的船次
- 客運量
- 港口貨櫃／貨物吞吐量
- 港口服務及管理
- 船舶服務
- 海事處組織架構圖

- 海事處的編制和實際員額

- 海事處舉辦的課程

- 海事處訪客
- 刊憲的海事及航運法例

- 輔航設備

2. 資料來源

船舶進出口統計數字

船舶進出口統計數字乃根據船公司、代理人向海事處申報船舶抵達／離開港口的資料時所遞交的申報表 (MD 508 及 MD 510) 編製而成。
(摘要、表一至十)

港口貨櫃吞吐量

在葵青貨櫃碼頭裝運的貨櫃統計數字，主要由碼頭經營者提供。在葵青貨櫃碼頭以外裝運的遠洋輪船「空」貨櫃統計數字，由海事處根據申報表 MD 508 及 MD 510 編製。所有其他詳細的貨櫃統計數字，皆由政府統計處根據貨物艙單中所列的託運貨物抽取樣本編製而成。
(摘要、表十六至十七)

1. Introduction

The *Port of Hong Kong Statistical Tables* is a collection of Hong Kong Port and Maritime statistical information compiled by the Marine Department. This publication brings together the following statistics and information:

- Vessel Arrivals/Departures
- Passenger Throughput
- Port Container/Cargo Throughput
- Port Services and Control
- Shipping Services
- Organisation Chart of the Marine Department
- Establishment and Strength of the Marine Department
- Training Courses Conducted by the Marine Department
- Visitors to the Marine Department
- Gazetted Maritime and Shipping Legislation
- Aids to Navigation

2. Data Sources

Vessel Statistics

Vessel statistics are based on the declaration forms (MD 508 and MD 510) submitted to the Marine Department by shipping companies/agents for declaring arrivals/departures of vessels under their charge. **(Summary Table, Tables 1 – 10)**

Port Container Throughput

Statistics on container throughput handled at Kwai Tsing Container Terminals are mainly obtained from the terminal operators. Statistics on empty containers (ocean) handled at locations other than Kwai Tsing Container Terminals are compiled by the Marine Department based on the declaration forms of MD 508 and MD 510. As for all the other detailed container throughput statistics, they are compiled by the Census and Statistics Department based on a sample of consignments listed in the cargo manifests. **(Summary Table, Tables 16 – 17)**

港口貨物吞吐量

港口貨運吞吐量是由政府統計處根據貨物艙單中所列的託運貨物抽取樣本編製而成。
(表十八)

停泊／貨物裝卸地點

有關遠洋輪船的主要貨物裝卸地點和主要停泊地點的資料，均取自海事處船隻航行監察服務資訊系統所保存的船舶活動報告。(表一至二、七、十六至十七)

3. 用語及分類

容量

在本報告中，船舶的容量是以淨註冊噸位來表示。計算單位為淨註冊噸。淨註冊噸位是由一艘船的船殼內的容量(以立方呎計)，加上在甲板上用以裝載貨物、貯藏品及乘客的空間，再減去船長、高級船員、船員所住的地方、燃料、導航及推進器所佔用的地方。每一淨註冊噸相等於 100 立方呎的容量。

停泊／貨物裝卸地點

停泊／貨物裝卸地點可分為四類：葵青貨櫃碼頭、泊位和倉庫碼頭(包括公眾貨物裝卸區、海運碼頭及啟德郵輪碼頭)、碇泊處和浮泡。

貨櫃吞吐量

這是指以標準貨櫃單位計算作為搬運貨物之用的貨櫃數目。一個標準貨櫃單位等同一個二十呎貨櫃的容量。

Port Cargo Throughput

Port cargo statistics are compiled by the Census and Statistics Department based on a sample of consignments listed in the cargo manifests. (Table 18)

Berthing/Cargo Handling Location

Information on the main cargo handling location and main berthing location in respect of ocean vessels are extracted from the trip activity report kept in the Marine Department's Vessel Traffic Services Information System. (Tables 1 – 2, 7, 16 – 17)

3. Terms and Classifications

Capacity

In this report, the capacity of a vessel is expressed in terms of net registered tonnage (NRT). The unit of measurement is net registered ton. NRT is, broadly, the capacity of a ship in cubic feet of the space within the hull, and of the enclosed space above the deck available for cargo, stores and passengers but excluding space used for the accommodation of the master, officers, crew, fuel, navigation and propelling machinery. One net registered ton is equivalent to 100 cubic feet of capacity.

Berthing/Cargo Handling Location

The berthing/cargo handling location can be distinguished into four types: Kwai Tsing Container Terminals, berths and wharves (including public cargo working areas, Ocean Terminal and Kai Tak Cruise Terminal), anchorages, and buoys.

Container Throughput

This refers to the number of containers for moving the cargo in TEU terms. A TEU stands for a twenty-foot equivalent unit.

船旗

這是指船舶的國籍，表明其正式註冊的地方。香港在 1992 年正式開始船舶註冊制度。1997 年 7 月 1 日起，香港特別行政區經中央人民政府授權繼續進行船舶註冊，並根據香港特別行政區的法律以「中國香港」的名義頒發有關證件。

內河航限

內河航限是指香港鄰近水域，一般指香港與珠江、大鵬灣及澳門，及其他在廣東和廣西與香港鄰近水域相連的內陸水域。內河航限的精確定義是指以下範圍內的水域：

- 東至東經 114°30'；
- 南至北緯 22°09'；及
- 西至東經 113°31'。

船舶類型

這是指船舶的特定用途，可分為 18 類：運車船、化學品運載船、普通貨船、其他貨船、郵船／渡輪、散裝乾貨船、漁船／魚類加工船、全槽格式貨櫃船、液化氣體運載船、駁船／躉船／貨艇、油輪、礦沙／散貨／油類混用船、其他液體運載船、遊樂船、滾裝卸式船、半貨櫃船、拖船及其他。

Flag

This is the nationality of the vessel, indicating where she is officially registered. In Hong Kong, the official vessel registration system was set up in 1992. As from 1 July 1997, the Hong Kong Special Administrative Region is authorised by the Central People's Government to continue to maintain a shipping register and issue related certificates under its legislation, using the name "Hong Kong, China".

River Trade Limits

River trade limits mean the waters in the vicinity of Hong Kong, which broadly include the Pearl River, Mirs Bay and Macao, and other inland waters in Guangdong and Guangxi which are accessible from waters in the vicinity of Hong Kong. The precise definition of river trade limits refers to waters within the following boundaries:

- to the East, meridian 114°30' East;
- to the South, parallel 22°09' North; and
- to the West, meridian 113°31' East.

Ship Type

This refers to the known specific function of the ship and can be distinguished into 18 types: car carrier, chemical carrier/tanker, conventional cargo vessel, other cargo vessel, cruise/ferry, dry bulk carrier, fishing/fish processing vessel, fully cellular container vessel, gas carrier/tanker, lighter/barge/cargo junk, oil tanker, ore/bulk/oil carrier, other fluid carrier, pleasure vessel, roll on/roll off, semi-container vessel, tug and others.

4. 資料定義

遠洋輪船和內河船隻

遠洋輪船和內河船隻的定義是根據所停靠港口是否已超越內河航限而定。遠洋輪船是指越過內河航限行駛的船隻，而內河船隻則指在內河航限內行駛的船隻。內河航限的定義在香港法例第313章《船舶及港口管制條例》訂明。(摘要、表一至十、十六至十八)

4. Data Definitions

Ocean Vessels and River Vessels

Ocean vessels and river vessels are defined according to whether or not their ports of call are beyond the river trade limits. Ocean vessels refer to vessels operating beyond the river trade limits while river vessels refer to vessels plying within the river trade limits. The interpretation of river trade limits is defined under the Shipping and Port Control Ordinance, Cap. 313, Laws of Hong Kong. (Summary Table, Tables 1 – 10, 16 – 18)

停泊／貨物裝卸地點

船舶在進入香港水域後可能停泊超過一個停泊地點。若船舶來港的主要原因是裝卸貨物，則主要的貨物裝卸地點和主要的停泊地點以葵青貨櫃碼頭、泊位和倉庫碼頭(包括公眾貨物裝卸區)、碇泊處和浮泡排列。若船舶來港的主要原因不是裝卸貨物，主要停泊地點為停留時間最長的地點。(表一至二、七、十六至十七)

內河客船

內河客船的抵港次數是指船隻停泊於港澳碼頭、中國客運碼頭、屯門客運碼頭和海天客運碼頭的次數。屯門客運碼頭於 2012 年 7 月 1 日停止運作及於 2016 年 1 月 28 日復航。由 2017 年開始，內河客船包括在內河航限行駛的郵船。(摘要、表三至五)

5. 資料局限

遠洋客船數字包括在內河航限以外水域行駛的遊樂船。但是，由於有些船主／代理人沒有申報這些船舶的淨註冊噸位資料給海事處，故遠洋客船的淨註冊噸位數字可能輕微低於實際的數字。(摘要、表一至五)

由於不能準確地統計本地領牌遊樂船和漁船來往香港及內河航限內的船次，故這兩類船隻沒有包括在內河船隻統計範圍內。(摘要、表三至六)

Berthing/Cargo Handling Location

A vessel may berth at more than one location after entering into Hong Kong waters. If the main reason of call of the vessel is for loading/discharging cargo, both the main cargo handling location and the main berthing location were presented in the order of Kwai Tsing Container Terminals, berths and wharves (including public cargo working areas), anchorages, and buoys. If the main reason of call is not for loading/discharging cargo, the main berthing location refers to the one with the longest stay. (Tables 1 – 2, 7, 16 – 17)

River Passenger Vessels

The figures on arrivals of river passenger vessels refer to the number of berthings at the Macau Ferry Terminal (MFT), the China Ferry Terminal (CFT), the Tuen Mun Ferry Terminal (TMFT) and SkyPier. The Tuen Mun Ferry Terminal ceased operation on 1 July 2012 and resumed operation on 28 January 2016. As from 2017, river passenger vessels include cruises plying within the river trade limits. (Summary Table, Tables 3 – 5)

5. Data Limitations

The number of ocean passenger vessels includes pleasure vessels plying beyond the river trade limits. However, as some of their owners/agents do not report NRT information to the Marine Department, the total NRT for ocean passenger vessels may be slightly under-reported. (Summary Table, Tables 1 – 5)

As accurate number of trips of locally licensed pleasure vessels and fishing vessels plying between Hong Kong and the river trade limits is not available, these two categories of vessels are not included in the river vessel statistics. (Summary Table, Tables 3 – 6)

6. 數字的進位

客運量、港口貨物和貨櫃吞吐量及淨註冊噸位統計數字是計算至最接近的千位。

項目	單位
客運量	千位
貨物吞吐量	千公噸
貨櫃吞吐量	千個標準貨櫃單位
淨註冊噸位	千噸

由於四捨五入關係，本報告中所列的個別數字加起來可能不等於其總數。另外，變動百分率和比重百分率是以未經進位的數字計算所得。

7. 代號

- () 與去年同期比較的變動百分率
- ^ 變動在 $\pm 0.05\%$ 之間
- ※ 變動多於 1000%
- @ 比重百分率少於 0.05
- † 少於 500 個標準貨櫃單位／人次／公噸

- # 臨時數字
- * 修訂數字
- N.A. 沒有數字
- 不適用

海事處
策劃、發展協調及港口保安部
統計組

2018 年 5 月

6. Rounding of Figures

Statistics on passenger throughput, port cargo and container throughput and NRT are rounded to the nearest thousand.

Items	Units
Passenger Throughput	thousand units
Cargo Throughput	'000 tonnes
Container Throughput	'000 TEUs
NRT	'000 tons

Figures shown in this report may not add up to the respective totals due to rounding. Furthermore, percentage changes and percentage shares are calculated from unrounded figures.

7. Symbols

- () % change over the same period of preceding year
- ^ Change within $\pm 0.05\%$
- ※ Change more than 1000%
- @ Percentage share less than 0.05
- † Less than 500 TEUs/passenger journeys/tonnes

- # Provisional figures
- * Revised figures
- N.A. Not available
- Not applicable

Statistics Section
Planning, Development & Port Security Branch
Marine Department

May 2018

摘要
SUMMARY

2012年至2017年主要港口統計數字
Principal Port Statistics for 2012 – 2017

項目 Item	2012	2016	2017	平均每年變動百分率 Average Annual Rate of Change	
				2016-2017	2012-2017
1. 抵港船次 Vessel Arrivals	190 859	185 011	185 420	+0.2%	-0.6%
(a) 遠洋輪船 Ocean Vessels	30 703	27 642	26 793	-3.1%	-2.7%
遠洋貨船 <i>Ocean Cargo Vessels</i>	28 286	25 869	25 261	-2.4%	-2.2%
遠洋客船 <i>Ocean Passenger Vessels</i>	2 417	1 773	1 532	-13.6%	-8.7%
(b) 內河船隻 River Vessels	160 156	157 369	158 627	+0.8%	-0.2%
內河貨船 <i>River Cargo Vessels</i>	78 094	72 810	76 510	+5.2%	-0.4%
內河客船 <i>River Passenger Vessels</i>	82 062	84 559	82 117	-2.9%	^
2. 抵港船舶的淨註冊噸位 (千噸) NRT of Vessel Arrivals ('000 tons)	518 985	521 638	540 070	+3.5%	+0.8%
(a) 遠洋輪船 Ocean Vessels	412 063	409 453	420 402	+2.7%	+0.4%
(b) 內河船隻 River Vessels	106 923	112 186	119 668	+6.7%	+2.3%
3. 港口貨櫃吞吐量 (千個標準貨櫃單位) Port Container Throughput ('000 TEUs)	23 117	19 813	20 770	+4.8%	-2.1%
(i) 按停泊地點分析 By Berthing Location					
葵青貨櫃碼頭 <i>Kwai Tsing Container Terminals</i>	17 475	15 203	16 236	+6.8%	-1.5%
葵青貨櫃碼頭以外 <i>Other than Kwai Tsing Container Terminals</i>	5 642	4 609	4 534	-1.6%	-4.3%
(ii) 按運輸方式分析 By Mode of Transport					
海運 <i>Seaborne</i>	16 689	13 565	14 622	+7.8%	-2.6%
內河 <i>River</i>	6 428	6 248	6 149	-1.6%	-0.9%
4. 港口貨物吞吐量 (千公噸) Port Cargo Throughput ('000 tonnes)	269 282	256 730	281 545	+9.7%	+0.9%
(a) 海運 Seaborne	188 860	164 084	176 889	+7.8%	-1.3%
(b) 河運 River	80 423	92 646	104 656	+13.0%	+5.4%
5. 跨境渡輪⁽¹⁾及郵輪乘客人次 (千乘客人次) Cross-boundary Ferry⁽¹⁾ and Cruise Passenger Journeys ('000 passenger journeys)	29 660	29 113	29 150	+0.1%	-0.3%
6. 客運碼頭乘客人次⁽²⁾ (千乘客人次) Passenger Journeys at Marine Ferry Terminals⁽²⁾ ('000 passenger journeys)	26 000	24 952	24 987	+0.1%	-0.8%
(a) 澳門 Macao	21 017	20 704	20 832	+0.6%	-0.2%
(b) 中國內地 Mainland China	4 743	4 248	4 155	-2.2%	-2.6%
(c) 其他 Others	240	-	-	-	-

註釋： (1) 包括海事處轄下的客運碼頭(包括港澳碼頭、中國客運碼頭及屯門客運碼頭)和海天客運碼頭的跨境渡輪。
Notes: Including cross-boundary ferries in Marine Ferry Terminals (including Macau Ferry Terminal, China Ferry Terminal and Tuen Mun Ferry Terminal) under the Marine Department and SkyPier.

(2) 指海事處轄下客運碼頭的乘客人次，包括乘搭直升機的乘客人次。屯門客運碼頭於2012年7月1日停止運作及於2016年1月28日復航。其他航線於2015年1月27日停止運作。
They refer to passenger journeys of Marine Ferry Terminals under the Marine Department. Figures include helicopter passenger journeys. The Tuen Mun Ferry Terminal ceased operation on 1.7.2012 and resumed operation on 28.1.2016. Ferry service to or from other places ceased operation on 27.1.2015.

統計表

Statistical
Tables

表 1
TABLE 1

2017 年按主要停泊地點分析抵港遠洋輪船的船次
Ocean Vessel Arrivals by Main Berthing Location, 2017

主要停泊地點 Main Berthing Location	主要船舶類別 Main Vessel Category				總計 Total	
	貨船 Cargo Vessels		客船 Passenger Vessels			
	抵港船次 No. of Vessel Arrivals	淨註冊噸位 (千噸) NRT ('000)	抵港船次 No. of Vessel Arrivals	淨註冊噸位 (千噸) NRT ('000)	抵港船次 No. of Vessel Arrivals	淨註冊噸位 (千噸) NRT ('000)
	(%)	(%)	(%)	(%)	(%)	(%)
葵青貨櫃碼頭 Kwai Tsing Container Terminals	10 675 (-3.0)	255 929 (+2.9)	0 (-100.0)	0 (-100.0)	10 675 (-3.0)	255 929 (+2.9)
泊位和倉庫碼頭 ⁽¹⁾ Berths and Wharves ⁽¹⁾	1 934 (+15.7)	17 139 (+31.6)	628 (+24.9)	22 573 (+39.7)	2 562 (+17.8)	39 713 (+36.1)
碇泊處 Anchorage	12 601 (-4.2)	119 251 (-4.6)	130 (-44.9)	369 (+288.5)	12 731 (-4.9)	119 620 (-4.4)
浮泡 Buoys	51 (+37.8)	203 (+40.4)	774 (-25.1)	4 938 (-20.5)	825 (-22.9)	5 141 (-19.2)
總計 Total	25 261 (-2.4)	392 522 (+1.5)	1 532 (-13.6)	27 880 (+23.4)	26 793 (-3.1)	420 402 (+2.7)

註釋： (1) 包括公眾貨物裝卸區、海運碼頭及啟德郵輪碼頭。
Note: Including public cargo working areas, Ocean Terminal and Kai Tak Cruise Terminal.

表 2
TABLE 2

2017 年按主要停泊地點分析離港遠洋輪船的船次
Ocean Vessel Departures by Main Berthing Location, 2017

主要停泊地點 Main Berthing Location	主要船舶類別 Main Vessel Category				總計 Total	
	貨船 Cargo Vessels		客船 Passenger Vessels			
	離港船次 No. of Vessel Departures	淨註冊噸位 (千噸) NRT ('000)	離港船次 No. of Vessel Departures	淨註冊噸位 (千噸) NRT ('000)	離港船次 No. of Vessel Departures	淨註冊噸位 (千噸) NRT ('000)
	(%)	(%)	(%)	(%)	(%)	(%)
葵青貨櫃碼頭 Kwai Tsing Container Terminals	10 689 (-1.9)	256 903 (+3.5)	0 (-100.0)	0 (-100.0)	10 689 (-1.9)	256 903 (+3.4)
泊位和倉庫碼頭 ⁽¹⁾ Berths and Wharves ⁽¹⁾	1 969 (+9.0)	17 228 (+24.8)	629 (+28.1)	22 158 (+39.4)	2 598 (+13.1)	39 386 (+32.6)
碇泊處 Anchorage	11 814 (-6.8)	112 893 (-2.8)	156 (-40.2)	244 (+16.1)	11 970 (-7.4)	113 137 (-2.7)
浮泡 Buoys	38 (+58.3)	153 (+61.4)	773 (-25.0)	4 933 (-20.4)	811 (-23.1)	5 086 (-19.1)
總計 Total	24 510 (-3.5)	387 177 (+2.4)	1 558 (-12.6)	27 336 (+22.1)	26 068 (-4.1)	414 513 (+3.5)

註釋： (1) 包括公眾貨物裝卸區、海運碼頭及啟德郵輪碼頭。
Note: Including public cargo working areas, Ocean Terminal and Kai Tak Cruise Terminal.

表3
TABLE 3

2017年按船舶類型分析抵港船舶的船次
Vessel Arrivals by Ship Type, 2017

船舶類型 Ship Type	遠洋輪船 Ocean Vessels		內河船隻 River Vessels		總計 Total	
	抵港船次 No. of Vessel Arrivals	比重 百分率 Percentage Share	抵港船次 No. of Vessel Arrivals	比重 百分率 Percentage Share	抵港船次 No. of Vessel Arrivals	比重 百分率 Percentage Share
	(%)		(%)		(%)	
運車船 Car Carrier	204 (+16.6)	0.8%	18 (+157.1)	@	222 (+22.0)	0.1%
化學品運載船 Chemical Carrier/Tanker	440 (+4.0)	1.6%	166 (+12.9)	0.1%	606 (+6.3)	0.3%
普通貨船 Conventional Cargo Vessel	2 001 (-14.9)	7.5%	6 354 (-10.6)	4.0%	8 355 (-11.7)	4.5%
郵船／渡輪 Cruise/Ferry	1 329 (-14.1)	5.0%	82 117 (-2.9)	51.8%	83 446 (-3.1)	45.0%
散裝乾貨船 Dry Bulk Carrier	3 609 (+4.8)	13.5%	12 156 (+75.6)	7.7%	15 765 (+52.1)	8.5%
漁船／魚類加工船 Fishing/Fish Processing Vessel	334 (+4.7)	1.2%	N.A.	N.A.	334 (+4.7)	0.2%
全槽格式貨櫃船 Fully Cellular Container Vessel	16 827 (-2.5)	62.8%	42 826 (-4.8)	27.0%	59 653 (-4.1)	32.2%
液化氣體運載船 Gas Carrier/Tanker	332 (+15.3)	1.2%	150 (-1.3)	0.1%	482 (+9.5)	0.3%
駁船／躉船／貨艇 Lighter/Barge/Cargo Junk	28 (-67.8)	0.1%	1 799 (+9.1)	1.1%	1 827 (+5.2)	1.0%
油輪 Oil Tanker	820 (+11.3)	3.1%	549 (-6.0)	0.3%	1 369 (+3.6)	0.7%
礦沙／散貨／油類混用船 Ore/Bulk/Oil (OBO) Carrier	29 (-32.6)	0.1%	9 (+800.0)	@	38 (-13.6)	@
遊樂船 Pleasure Vessel	203 (-10.2)	0.8%	N.A.	N.A.	203 (-10.2)	0.1%
滾裝卸式船 Roll On/Roll Off	147 (-18.8)	0.5%	16 (-20.0)	@	163 (-18.9)	0.1%
半貨櫃船 Semi-container Vessel	136 (-26.5)	0.5%	10 431 (+11.9)	6.6%	10 567 (+11.2)	5.7%
拖船 Tug	126 (-25.0)	0.5%	1 856 (+7.8)	1.2%	1 982 (+4.9)	1.1%
其他 Others	228 (+8.1)	0.9%	180 (+11.1)	0.1%	408 (+9.4)	0.2%
總計 Total	26 793 (-3.1)	100.0%	158 627 (+0.8)	100.0%	185 420 (+0.2)	100.0%

註釋： 2017年沒有「其他貨船」及「其他液體運載船」的抵港船次。

Note: There was no vessel arrival of "other cargo vessel" and "other fluid carrier" in 2017.

表 4
TABLE 4

2017 年按船旗分析抵港船舶的船次
Vessel Arrivals by Flag, 2017

船旗 Flag	遠洋輪船 Ocean Vessels				內河船隻 River Vessels				總計 Total			
	抵港船次 No. of Vessel Arrivals		淨註冊噸位 (千噸) NRT ('000)		抵港船次 No. of Vessel Arrivals		淨註冊噸位 (千噸) NRT ('000)		抵港船次 No. of Vessel Arrivals		淨註冊噸位 (千噸) NRT ('000)	
		(%)		(%)		(%)		(%)		(%)		(%)
安提瓜和巴布達 Antigua and Barbuda	511	(-21.5)	3 438	(-22.5)	40	(-68.5)	247	(-63.6)	551	(-29.2)	3 685	(-27.9)
巴哈馬 Bahamas	819	(-18.7)	25 378	(+24.1)	72	(-1.4)	6 671	(+94.1)	891	(-17.5)	32 049	(+34.2)
伯利茲 Belize	145	(+4.3)	391	(+20.3)	23	(+64.3)	61	(+52.1)	168	(+9.8)	452	(+23.8)
中國 China	5 336	(-0.2)	13 884	(-22.9)	97 276	(+3.1)	70 466	(+8.7)	102 612	(+2.9)	84 350	(+1.8)
塞浦路斯 Cyprus	641	(-10.3)	10 228	(+5.0)	29	(-47.3)	619	(-31.6)	670	(-13.0)	10 847	(+1.9)
丹麥 Denmark	107	(-13.7)	5 527	(-9.5)	9	(+125.0)	334	(+110.8)	116	(-9.4)	5 861	(-6.5)
德國 Germany	191	(+7.3)	7 461	(-1.1)	13	(-27.8)	390	(-54.4)	204	(+4.1)	7 851	(-6.5)
直布羅陀 Gibraltar	56	(+43.6)	1 109	(+104.7)	2	(0)	32	(+174.4)	58	(+41.5)	1 141	(+106.2)
希臘 Greece	59	(-22.4)	2 135	(-28.5)	7	(+40.0)	280	(+81.2)	66	(-18.5)	2 415	(-23.1)
中國香港 Hong Kong, China	3 439	(+3.2)	73 606	(+9.0)	59 687	(-2.7)	17 441	(-11.3)	63 126	(-2.4)	91 047	(+4.4)
意大利 Italy	87	(-8.4)	2 807	(-8.1)	23	(+475.0)	936	(+651.4)	110	(+11.1)	3 743	(+17.7)
牙買加 Jamaica	342	(-4.5)	1 617	(+23.8)	1	(-)	2	(-)	343	(-4.2)	1 618	(+23.9)
日本 Japan	107	(-4.5)	3 888	(-6.8)	2	(0)	17	(0)	109	(-4.4)	3 905	(-6.7)
南韓 Republic of Korea	755	(-0.4)	7 057	(+7.0)	54	(+31.7)	243	(+15.2)	809	(+1.3)	7 300	(+7.2)
利比里亞 Liberia	2 410	(-4.9)	56 611	(+1.3)	213	(-2.3)	4 698	(+12.9)	2 623	(-4.7)	61 308	(+2.1)
盧森堡 Luxembourg	74	(+208.3)	796	(+43.3)	5	(0)	29	(-86.9)	79	(+172.4)	826	(+5.8)
馬耳他 Malta	790	(-0.3)	25 099	(+33.4)	54	(-11.5)	1 207	(-28.0)	844	(-1.1)	26 306	(+28.4)
馬紹爾群島 Marshall Islands	1 561	(+16.2)	32 215	(+28.8)	133	(+40.0)	2 336	(+6.9)	1 694	(+17.8)	34 551	(+27.1)

表 4 – 續
TABLE 4 – Cont'd

船旗 Flag	遠洋輪船 Ocean Vessels				內河船隻 River Vessels				總計 Total			
	抵港船次 No. of Vessel Arrivals		淨註冊噸位 (千噸) NRT ('000)		抵港船次 No. of Vessel Arrivals		淨註冊噸位 (千噸) NRT ('000)		抵港船次 No. of Vessel Arrivals		淨註冊噸位 (千噸) NRT ('000)	
	(%)		(%)		(%)		(%)		(%)		(%)	
帕勞共和國 Republic of Palau	52	(+100.0)	229	(-5.7)	1	(0)	2	(※)	53	(+96.3)	231	(-4.8)
巴拿馬 Panama	4 213	(-2.3)	63 143	(-6.9)	461	(-7.1)	4 906	(-17.5)	4 674	(-2.8)	68 049	(-7.8)
菲律賓 Phillippine	72	(+100.0)	493	(+58.2)	6	(-25.0)	57	(-47.8)	78	(+77.3)	549	(+30.7)
葡萄牙 Portugal	324	(+9.1)	9 062	(+27.9)	20	(-4.8)	801	(-3.9)	344	(+8.2)	9 863	(+24.5)
塞拉利昂 Sierra Leone	128	(+12.3)	164	(-4.4)	7	(-12.5)	12	(-59.1)	135	(+10.7)	176	(-12.5)
新加坡 Singapore	2 347	(-6.2)	44 069	(-6.0)	198	(+5.3)	3 383	(+51.6)	2 545	(-5.4)	47 452	(-3.4)
台灣 Taiwan	590	(-42.2)	3 718	(-33.1)	49	(-3.9)	526	(+33.1)	639	(-40.4)	4 244	(-28.8)
泰國 Thailand	251	(+2.9)	1 577	(+12.3)	19	(-20.8)	124	(-14.9)	270	(+0.7)	1 701	(+9.7)
多哥 Togo	60	(+87.5)	119	(+58.0)	4	(-20.0)	12	(+39.3)	64	(+73.0)	131	(+56.1)
英國 United Kingdom	474	(-8.1)	15 837	(-5.7)	71	(+24.6)	2 527	(+12.8)	545	(-4.9)	18 365	(-3.5)
越南 Vietnam	357	(+13.7)	1 741	(-1.0)	20	(+5.3)	75	(-11.3)	377	(+13.2)	1 816	(-1.5)
其他 ⁽¹⁾ Others ⁽¹⁾	495	(-18.5)	7 006	(-14.9)	128	(+40.7)	1 233	(+54.4)	623	(-10.7)	8 239	(-8.8)
總計 Total	26 793	(-3.1)	420 402	(+2.7)	158 627	(+0.8)	119 668	(+6.7)	185 420	(+0.2)	540 070	(+3.5)

註釋： (1) 指該年所有遠洋輪船抵港船次總數少於 50 船次的旗號。

Note: Referring to those flags of which the total number of ocean vessel arrivals being less than 50 during the year.

表 5
TABLE 5

2017 年按船旗分析曾停靠香港的船舶數目和淨註冊噸位
Number and NRT of Vessels Calling Hong Kong by Flag, 2017

船旗 Flag	遠洋輪船 ⁽¹⁾ Ocean Vessels ⁽¹⁾				內河船隻 ⁽¹⁾ River Vessels ⁽¹⁾			
	船舶數目 Number of Vessels		淨註冊噸位 (千噸) NRT ('000)		船舶數目 Number of Vessels		淨註冊噸位 (千噸) NRT ('000)	
	(%)		(%)		(%)		(%)	
安提瓜和巴布達 Antigua and Barbuda	63	(-1.6)	460	(-5.3)	22	(-8.3)	139	(-24.6)
巴哈馬 Bahamas	128	(+14.3)	3 136	(+10.5)	25	(+25.0)	849	(+54.9)
伯利茲 Belize	63	(+23.5)	135	(+25.1)	17	(+54.5)	44	(+35.7)
中國 China	472	(-11.8)	4 267	(-20.3)	1 574	(+4.0)	3 217	(-7.8)
塞浦路斯 Cyprus	100	(-12.3)	2 385	(-5.2)	23	(+15.0)	444	(+42.0)
丹麥 Denmark	38	(-15.6)	1 888	(-11.6)	9	(+125.0)	334	(+110.8)
法國 France	21	(+10.5)	1 021	(+44.5)	1	(-)	38	(-)
德國 Germany	46	(-4.2)	1 961	(-11.2)	10	(-28.6)	359	(-47.0)
希臘 Greece	38	(-13.6)	1 389	(-18.3)	7	(+40.0)	280	(+81.2)
中國香港 Hong Kong, China	905	(+1.9)	19 879	(+8.0)	547	(-9.0)	3 565	(-11.3)
意大利 Italy	24	(+4.3)	750	(+6.9)	7	(+75.0)	279	(+124.0)
日本 Japan	35	(-10.3)	745	(-12.2)	1	(0)	9	(0)
南韓 Republic of Korea	110	(-1.8)	1 006	(+9.2)	37	(+42.3)	181	(+7.7)
利比里亞 Liberia	561	(+2.7)	16 339	(+6.5)	126	(+4.1)	3 343	(+19.0)
馬來西亞 Malaysia	23	(-4.2)	280	(+51.0)	6	(+20.0)	116	(+6.8)
馬耳他 Malta	235	(+14.1)	7 760	(+30.7)	42	(-2.3)	942	(-10.9)
馬紹爾群島 Marshall Islands	495	(+20.4)	11 508	(+21.6)	104	(+19.5)	1 882	(-8.5)

表 5 – 續
TABLE 5 – Cont'd

船旗 Flag	遠洋輪船 ⁽¹⁾ Ocean Vessels ⁽¹⁾				內河船隻 ⁽¹⁾ River Vessels ⁽¹⁾			
	船舶數目 Number of Vessels		淨註冊噸位 (千噸) NRT ('000)		船舶數目 Number of Vessels		淨註冊噸位 (千噸) NRT ('000)	
	(%)		(%)		(%)		(%)	
紐埃 Niue	21	(+61.5)	24	(-3.3)	1	(0)	†	(-97.6)
挪威 Norway	26	(-10.3)	437	(-22.4)	17	(+54.5)	269	(+63.9)
巴拿馬 Panama	1 224	(+0.4)	22 553	(+1.1)	265	(-6.4)	3 675	(-19.1)
菲律賓 Philippines	25	(+25.0)	177	(-24.8)	6	(-25.0)	57	(-47.8)
葡萄牙 Portugal	63	(+21.2)	1 885	(+21.6)	20	(+42.9)	801	(+64.1)
塞拉利昂 Sierra Leone	26	(-23.5)	47	(-24.7)	4	(-50.0)	8	(-71.3)
新加坡 Singapore	522	(+7.4)	12 354	(+13.9)	100	(+1.0)	1 860	(+14.2)
台灣 Taiwan	48	(-63.1)	681	(+6.3)	9	(+28.6)	115	(+175.0)
泰國 Thailand	35	(+12.9)	235	(+29.0)	7	(0)	30	(+1.0)
英國 United Kingdom	126	(-11.9)	4 910	(+2.9)	28	(-9.7)	1 052	(+5.6)
越南 Vietnam	105	(+25.0)	564	(+14.8)	18	(+5.9)	72	(-2.8)
其他 ⁽²⁾ Others ⁽²⁾	236	(-12.3)	2 479	(-13.2)	67	(+4.7)	718	(+37.9)
總計 Total	5 814	(+0.4)	121 255	(+6.0)	3 100	(+1.6)	24 679	(+0.6)

註釋： (1) 此表內的遠洋輪船及內河船隻數目不能直接地加在一起，因為同一艘船舶在一年內不同的抵港旅程可能會被歸納於遠洋及內河船舶類別，視乎該抵港旅程是否超越內河航限而定。

Notes: The number of ocean vessels and river vessels in this table cannot be grouped together by simple addition as the same vessel may be classified as ocean and river vessel in different trips during a year depending on whether her trips to Hong Kong were beyond the river trade limits or not.

(2) 指該年所有遠洋輪船抵港船舶總數少於 20 船舶的旗號。

Referring to those flags of which the total number of ocean vessels calling Hong Kong being less than 20 during the year.

表 6
TABLE 6

2017 年按選定船舶類型分析離港船舶的平均在港停留時間
Average Time in Port for Vessels Departing Hong Kong by Selected Ship Type, 2017

小時
Hours

船舶類型 Ship Type	遠洋輪船 Ocean Vessels	內河船隻 River Vessels	總計 Total
所有船舶類型 All Ship Types	26	41⁽¹⁾	37⁽¹⁾
當中： Of Which:			
全槽格式貨櫃船 Fully Cellular Container Vessel	20	37	32
散裝乾貨船 Dry Bulk Carrier	28	44	41
半貨櫃船 Semi-container Vessel	52	41	41
普通貨船 Conventional Cargo Vessel	32	30	31
拖船 Tug	220	108	116
駁船／躉船／貨艇 Lighter/Barge/Cargo Junk	250	91	94
油輪 Oil Tanker	37	88	53

註釋： (1) 不包括郵船／渡輪、漁船／魚類加工船及遊樂船的內河船隻。

Note: Excluding cruises/ferries, fishing/fish processing vessels and pleasure vessels under river vessels.

表 7
TABLE 7

2017 年在葵青貨櫃碼頭處理貨櫃的遠洋輪船統計數字
Statistics on Ocean Vessels with Containers Handled at Kwai Tsing Container Terminals, 2017

項目 Item	抵港船次 No. of Vessel Arrivals	比重百分率 Percentage Share
在葵青貨櫃碼頭處理貨櫃的遠洋輪船 Ocean Vessels with Containers Handled at Kwai Tsing Container Terminals	10 633 (-3.2)	100.0%
- 按載重噸分析 Analysed by Deadweight Tonnage (DWT)		
< 10 000	342 (-0.6)	3.2%
10 000 - < 20 000	1 710 (-11.5)	16.1%
20 000 - < 30 000	2 293 (+2.8)	21.6%
30 000 - < 40 000	1 410 (-6.6)	13.3%
40 000 - < 50 000	304 (-2.6)	2.9%
50 000 - < 100 000	2 804 (-9.8)	26.4%
100 000 - < 120 000	1 018 (+2.4)	9.6%
≥ 120 000	752 (+36.2)	7.1%
- 按主要貿易地區／國家分析 (根據所申報的上一個停靠港口) Analysed by Principal Trading Region/Country (Based on Previous Port Reported)		
亞洲 Asia	9 650 (-5.4)	90.8%
- 中國內地 - Mainland China	2 103 (-10.4)	19.8%
- 台灣 - Taiwan	1 987 (-4.0)	18.7%
- 越南 - Vietnam	1 420 (+2.9)	13.4%
- 新加坡 - Singapore	1 256 (-10.6)	11.8%
- 泰國 - Thailand	797 (-8.4)	7.5%
- 韓國 - Korea	677 (-0.7)	6.4%
- 馬來西亞 - Malaysia	444 (+32.1)	4.2%
- 菲律賓 - Philippines	398 (-9.1)	3.7%
- 日本 - Japan	373 (-7.0)	3.5%
- 印度尼西亞 - Indonesia	113 (-36.2)	1.1%
- 其他 - Others	82 (-17.2)	0.8%
北美洲 North America	316 (+49.1)	3.0%
中美洲、南美洲 Central and South America	202 (+15.4)	1.9%
大洋洲 Oceania	184 (+29.6)	1.7%
西歐 Western Europe	97 (+38.6)	0.9%
其他 Others	184 (+2.8)	1.7%
平均在香港港口停留時間 (包括停留在葵青貨櫃碼頭以外的時間) (小時) Average Time in Hong Kong Port (Including Time Outside Kwai Tsing Container Terminals) (Hours)	14.1	

表 8
TABLE 8

2017 年按夏季吃水分析抵港遠洋輪船的船次
Ocean Vessel Arrivals by Summer Draft, 2017

夏季吃水 (米) Summer Draft (m)	抵港船次 No. of Vessel Arrivals		比重百分率 Percentage Share
		(%)	
< 2	55	(-17.9)	0.2%
2 – < 4	3 142	(-5.2)	11.7%
4 – < 6	2 428	(-7.2)	9.1%
6 – < 8	2 559	(-7.6)	9.6%
8 – < 10	6 708	(-0.1)	25.0%
10 – < 12	3 523	(-8.4)	13.1%
12 – < 14	3 822	(-3.0)	14.3%
14 – < 16	4 025	(+0.2)	15.0%
16 – < 18	195	(+35.4)	0.7%
≥ 18	336	(+58.5)	1.3%
總計 Total	26 793	(-3.1)	100.0%

表 9
TABLE 9

2017 年按船舶總長度分析抵港遠洋輪船的船次
Ocean Vessel Arrivals by Vessel Length Overall, 2017

船舶總長度 (米) Vessel Length Overall (m)	抵港船次 No. of Vessel Arrivals		比重百分率 Percentage Share
		(%)	
< 30	307	(-18.4)	1.1%
30 – < 50	399	(-26.0)	1.5%
50 – < 100	5 256	(-4.0)	19.6%
100 – < 150	4 572	(-13.1)	17.1%
150 – < 200	7 702	(+6.6)	28.7%
200 – < 250	2 935	(-0.8)	11.0%
250 – < 300	3 022	(-9.2)	11.3%
300 – < 350	1 796	(-6.5)	6.7%
≥ 350	804	(+43.6)	3.0%
總計 Total	26 793	(-3.1)	100.0%

表 10
TABLE 10

2017 年按主要來港原因分析抵港遠洋輪船的船次
Ocean Vessel Arrivals by Main Reason of Call, 2017

主要來港原因 Main Reason of Call	抵港船次 No. of Vessel Arrivals		比重百分率 Percentage Share
		(%)	
裝貨、卸貨 Loading and Discharging Cargo	17 020	(-5.9)	63.5%
補充燃料 Bunkers	2 918	(+59.1)	10.9%
交換文件 Switch Documents	1 602	(-3.1)	6.0%
卸貨 Discharging Cargo	1 328	(+20.4)	5.0%
旅遊 (郵輪) Tour (Cruise)	1 323	(-14.1)	4.9%
船上用品補給 (燃料除外) Taking Stores (Except Bunkers)	898	(-50.7)	3.4%
裝貨 Loading Cargo	389	(+20.4)	1.5%
消遣／運動 (遊艇) Pleasure/Sports (Pleasure Vessels)	201	(-10.7)	0.8%
船員變動 Change of Crew	39	(-30.4)	0.1%
緊急修理、非例行入乾塢 Emergency Repair, Non-routine Dry Docking	22	(-21.4)	0.1%
例行入乾塢 Routine Dry Docking	21	(+23.5)	0.1%
其他 Others	1 032	(+8.9)	3.9%
總計 Total	26 793	(-3.1)	100.0%

表 11
TABLE 11

2017 年按停泊地點及有否目的地分析抵港郵輪船次⁽¹⁾
Cruise Arrivals⁽¹⁾ by Berthing Location by Whether the Trip with Destination, 2017

停泊地點 Berthing Location	有目的地 With Destination		公海 ⁽²⁾ High Seas ⁽²⁾		總計 Total	
	抵港 郵輪船次 No. of Cruise Arrivals	變動百分率 Percentage Change	抵港 郵輪船次 No. of Cruise Arrivals	變動百分率 Percentage Change	抵港 郵輪船次 No. of Cruise Arrivals	變動百分率 Percentage Change
海運大廈 Ocean Terminal	58	-38.3%	355	-1.4%	413	-9.0%
啟德郵輪碼頭 Kai Tak Cruise Terminal	131	+54.1%	57	+470.0%	188	+97.9%
浮泡和碇泊處 Buoys and Anchorages	0	-100.0%	784	-24.5%	784	-24.6%
其他 ⁽³⁾ Others ⁽³⁾	0	-	6	+100.0%	6	+100.0%
總計 Total	189	+5.0%	1 202	-14.9%	1 391	-12.6%

註釋： (1) 不包括非載客的船次，例如緊急修理、補充燃料等。
Notes: Excluding non-passenger carrying trips, e.g. emergency repair, bunkers, etc.

(2) 根據海商法，公海的定義是指不屬於任何國家領海或內水的海域。
According to Maritime Law, High Seas is defined as the waters lying outside the territorial waters of any countries.

(3) 包括私人泊位和倉庫碼頭、船塢及葵青貨櫃碼頭。
Including private berths and wharves, docks, and Kwai Tsing Container Terminals.

表 12
TABLE 12

2017 年跨境客運碼頭⁽¹⁾的抵港及離港航次統計數字⁽²⁾
Statistics on Vessel Arrivals and Departures at Cross-Boundary Ferry Terminals^{(1) (2)}, 2017

來往 ⁽³⁾ From/To ⁽³⁾	運輸工具類別 Type of Carrier	提供服務的船隻/ 直升機數目 No. of Vessels/ Helicopters in Service		抵港 Arrivals		離港 Departures					
				航次 No. of Trips		淨註冊噸位(千噸) NRT ('000)		航次 No. of Trips		淨註冊噸位(千噸) NRT ('000)	
			(%)	(%)	(%)	(%)	(%)	(%)	(%)	(%)	
澳門 Macao	雙體船 Catamaran	36	(+2.9)	40 198	(-4.1)	8 685	(-4.2)	41 759	(-2.6)	9 033	(-2.6)
	噴射飛翼船 Jetfoil	11	(0)	14 664	(+2.5)	1 385	(+2.3)	14 826	(+2.7)	1 401	(+2.6)
	直升機 Helicopter	6	(0)	5 975	(+11.8)	-	(-)	5 975	(+11.7)	-	(-)
小計 - 澳門 Sub-total - Macao				60 837	(-1.2)	10 071	(-3.3)	62 560	(-0.2)	10 434	(-2.0)
高明 Gaoming	雙體船 Catamaran	1	(0)	338	(-4.5)	59	(-4.5)	336	(-4.5)	59	(-4.5)
虎門 Humen	雙體船 Catamaran	3	(0)	1 807	(-1.9)	264	(-8.4)	1 790	(-1.5)	262	(-8.0)
江門 Jiangmen	雙體船 Catamaran	1	(0)	398	(-5.7)	55	(-5.7)	395	(-5.7)	54	(-5.7)
蓮花山 Lianhuashan	雙體船 Catamaran	10	(+66.7)	2 520	(-0.2)	420	(+1.1)	2 518	(-0.4)	420	(+0.9)
南沙 Nansha	雙體船 Catamaran	7	(+75.0)	480	(-66.1)	87	(-67.7)	478	(-65.1)	87	(-67.0)
蛇口 Shekou	雙體船 Catamaran	15	(0)	7 853	(+12.2)	1 000	(+4.4)	7 819	(+12.5)	995	(+4.7)
深圳 Shenzhen	雙體船 Catamaran	6	(-40.0)	1 729	(-19.5)	278	(-18.7)	1 651	(-25.7)	265	(-24.9)
順德 Shunde	雙體船 Catamaran	4	(+33.3)	1 765	(-2.2)	300	(-1.6)	1 770	(-2.3)	300	(-1.7)
中山 Zhongshan	雙體船 Catamaran	10	(+66.7)	4 386	(+3.4)	754	(+4.7)	4 312	(+2.2)	741	(+3.5)
珠海 Zhuhai	雙體船 Catamaran	13	(+8.3)	5 911	(-10.1)	914	(-12.9)	6 238	(-6.6)	950	(-10.7)
	直升機 Helicopter	0	(-100.0)	0	(-100.0)	-	(-)	0	(-100.0)	-	(-)
小計 - 內河港口 Sub-total - River Trade Ports				27 187	(-4.0)	4 131	(-7.5)	27 307	(-3.8)	4 133	(-7.6)
總計 Total				88 024	(-2.1)	14 201	(-4.6)	89 867	(-1.3)	14 567	(-3.6)

註釋：(1) 指海事處轄下的客運碼頭(包括港澳碼頭、中國客運碼頭及屯門客運碼頭)和海天客運碼頭。

Notes: It refers to Marine Ferry Terminals (including Macau Ferry Terminal, China Ferry Terminal and Tuen Mun Ferry Terminal) under the Marine Department and SkyPier.

(2) 數字不包括非載客的跨境渡輪航次。
Non-passenger carrying trips of cross-boundary ferry are excluded.

(3) 指抵港航程的起點站或離港航程的終點站。
It refers to the origin of arrival trip or the destination of departure trip.

資料來源：海事處客運碼頭組及香港國際機場客運碼頭服務有限公司

Data Sources: Ferry Terminals Section, Marine Department and Hong Kong International Airport Ferry Terminal Services Ltd.

表 13
TABLE 13

2017 年按船舶類型分析香港過境船舶的船次⁽¹⁾
Number of Vessel Trips Transit Hong Kong⁽¹⁾ by Ship Type, 2017

船舶類型 Ship Type	過境船次 Vessel Trips Transit Hong Kong	變動百分率 Percentage Change	淨註冊噸位 (千噸) NRT ('000)	變動百分率 Percentage Change
全槽格式貨櫃船 Fully Cellular Container Vessel	16 279	-1.1%	573 037	+4.6%
散裝乾貨船 Dry Bulk Carrier	231	+1.8%	5 056	+7.1%
液化氣體運載船 Gas Carrier/Tanker	220	+8.9%	7 310	+6.4%
普通貨船 Conventional Cargo Vessel	211	-47.8%	990	-55.9%
拖船 Tug	119	-7.8%	81	-21.6%
化學品運載船 Chemical Carrier/Tanker	113	-5.0%	549	+7.4%
油輪 Oil Tanker	109	-12.1%	1 534	-11.7%
其他 Others	72	-69.9%	759	-40.9%
總計 Total	17 354	-2.9%	589 317	+4.2%

註釋： (1) 只包括曾提供到達前通知書的過境香港水域船舶的船次。

Note: Including only those vessel trips transit Hong Kong waters with Pre-arrival Notification.

資料來源： 海事處船隻航行監察中心

Data Source: Vessel Traffic Centre, Marine Department

表 14
TABLE 14

2017 年按跨境客運碼頭分析客運量
Passenger Throughput by Cross-Boundary Ferry Terminal, 2017

千位 ('000)

來往 From/To	澳門 Macao	內河港口 River Trade Ports	總計 Total
	(%)	(%)	(%)
海事處轄下客運碼頭 ⁽¹⁾ Marine Ferry Terminals ⁽¹⁾	20 832 (+0.6)	4 155 (-2.2)	24 987 (+0.1)
港澳碼頭 ⁽²⁾ Macau Ferry Terminal ⁽²⁾	16 053 (+1.9)	1 200 (-1.9)	17 253 (+1.6)
中國客運碼頭 China Ferry Terminal	4 091 (-6.1)	2 951 (-2.4)	7 042 (-4.6)
屯門客運碼頭 Tuen Mun Ferry Terminal	688 (-) ⁽⁴⁾	4 (-) ⁽⁴⁾	692 (-) ⁽⁴⁾
海天客運碼頭 ⁽³⁾ SkyPier ⁽³⁾	810 (+5.5)	1 728 (-5.6)	2 539 (-2.3)
總計 Total	21 643 (+0.8)	5 883 (-3.2)	27 526 (-0.1)

註釋： (1) 數字與入境事務處發布的統計數字並不相等，原因是入境事務處的數字包括無須付船費的乘客(例如不足一歲者)。

Notes: Figures do not tally with those released by the Immigration Department because figures of the Immigration Department cover passengers who are not required to pay fares (e.g. passengers less than one year of age).

(2) 數字包括乘搭直升機來往澳門及中國內地的乘客人次。

Figures include helicopter passenger journeys to and from Macao and Mainland China.

(3) 數字包括無須付船費的乘客(例如不足一歲者)。

Figures include passengers who are not required to pay fares (e.g. passengers less than one year of age).

(4) 屯門客運碼頭於 2016 年 1 月 28 日復航。

The Tuen Mun Ferry Terminal resumed operation on 28.1.2016.

資料來源： 海事處客運碼頭組及香港國際機場客運碼頭服務有限公司

Data Sources: Ferry Terminals Section, Marine Department and Hong Kong International Airport Ferry Terminal Services Ltd.

表 15
TABLE 15

2017 年按航線分析抵港及離港乘客人次
Passenger Arrivals and Departures by Route, 2017

A. 海事處轄下客運碼頭⁽¹⁾
Marine Ferry Terminals⁽¹⁾

來往 ⁽²⁾ From/To ⁽²⁾	運輸工具類別 Type of Carrier	抵港乘客 Passenger Arrivals		離港乘客 Passenger Departures	
		乘客人次 (千位) Passenger Journeys ('000)	載客率 Passenger Load Factor	乘客人次 (千位) Passenger Journeys ('000)	載客率 Passenger Load Factor
		(%)	(%)	(%)	(%)
澳門 Macao	雙體船 Catamaran	6 970 (-3.8)	49.6% (+0.1)	9 630 (+1.5)	64.4% (+5.5)
	噴射飛翼船 Jetfoil	2 043 (+4.3)	63.0% (+1.1)	2 137 (+8.5)	65.1% (+4.9)
	直升機 Helicopter	25 (+17.8)	34.3% (+5.4)	28 (+23.9)	39.2% (+10.8)
小計 – 澳門 Sub-total – Macao		9 038 (-2.0)	52.1% (+0.6)	11 795 (+2.8)	64.4% (+5.4)
高明 Gaoming	雙體船 Catamaran	46 (+17.5)	40.5% (+23.0)	44 (+16.2)	38.9% (+21.7)
江門 Jiangmen	雙體船 Catamaran	41 (-2.1)	28.9% (+3.8)	43 (-1.4)	31.0% (+4.6)
蓮花山 Lianhuashan	雙體船 Catamaran	181 (+30.0)	38.1% (+36.5)	169 (+27.9)	35.6% (+34.9)
南沙 Nansha	雙體船 Catamaran	32 (-68.4)	19.0% (-4.1)	47 (-56.8)	28.0% (+30.9)
蛇口 Shekou	雙體船 Catamaran	112 (-2.9)	15.8% (-21.3)	101 (-2.5)	14.2% (-21.1)
深圳 Shenzhen	雙體船 Catamaran	† (-94.7)	0.6% (-37.3)	† (-75.5)	0.4% (-45.1)
順德 Shunde	雙體船 Catamaran	273 (+1.1)	45.3% (+3.2)	269 (+0.7)	44.6% (+2.8)
中山 Zhongshan	雙體船 Catamaran	482 (+4.7)	55.7% (+9.3)	502 (+6.3)	52.1% (+13.6)
珠海 Zhuhai	雙體船 Catamaran	893 (-5.9)	60.7% (+8.7)	920 (-5.0)	59.4% (+6.2)
	直升機 Helicopter	0 (-100.0)	- (-)	0 (-100.0)	- (-)
小計 – 內河港口 Sub-total – River Trade Ports		2 059 (-2.6)	45.3% (+9.1)	2 095 (-1.8)	44.3% (+8.7)
海事處轄下客運碼頭 Marine Ferry Terminals		11 097 (-2.1)	50.7% (+2.4)	13 890 (+2.0)	60.3% (+6.4)

表 15 - 續
TABLE 15 - Cont'd

B. 海天客運碼頭
SkyPier

來往 ⁽²⁾ From/To ⁽²⁾	運輸工具類別 Type of Carrier	抵港乘客 Passenger Arrivals				離港乘客 Passenger Departures			
		乘客人次 (千位) Passenger Journeys ('000)		載客率 Passenger Load Factor		乘客人次 (千位) Passenger Journeys ('000)		載客率 Passenger Load Factor	
		(%)		(%)		(%)		(%)	
澳門 Macao	雙體船 Catamaran	481	(+1.1)	32.4%	(+8.3)	329	(+12.7)	27.7%	(-1.2)
小計 - 澳門 Sub-total - Macao		481	(+1.1)	32.4%	(+8.3)	329	(+12.7)	27.7%	(-1.2)
虎門 Humen	雙體船 Catamaran	160	(-15.2)	33.1%	(-0.8)	76	(-2.7)	15.8%	(+13.2)
蓮花山 Lianhuashan	雙體船 Catamaran	57	(+31.3)	15.9%	(+38.8)	30	(+40.6)	8.3%	(+48.5)
南沙 Nansha	雙體船 Catamaran	†	(-96.7)	2.3%	(-54.1)	†	(-89.6)	1.8%	(+82.6)
蛇口 Shekou	雙體船 Catamaran	587	(-8.4)	44.6%	(-6.3)	223	(-3.3)	17.1%	(-1.3)
深圳 Shenzhen	雙體船 Catamaran	132	(-16.3)	23.0%	(-0.2)	50	(-5.2)	9.0%	(+26.3)
中山 Zhongshan	雙體船 Catamaran	150	(+8.5)	24.8%	(+3.8)	107	(+20.8)	22.2%	(+11.7)
珠海 Zhuhai	雙體船 Catamaran	82	(-17.6)	27.4%	(+5.5)	74	(-17.7)	24.5%	(+5.1)
小計 - 內河港口 Sub-total - River Trade Ports		1 169	(-8.0)	32.1%	(+0.3)	559	(-0.2)	16.1%	(+10.4)
海天客運碼頭 SkyPier		1 650	(-5.5)	32.2%	(+2.5)	889	(+4.2)	19.0%	(+9.2)

註釋：(1) 指海事處轄下的客運碼頭(即港澳碼頭、中國客運碼頭及屯門客運碼頭)。

Notes: It refers to Marine Ferry Terminals (i.e. Macau Ferry Terminal, China Ferry Terminal and Tuen Mun Ferry Terminal) under the Marine Department.

(2) 指抵港航程的起點站或離港航程的終點站。乘客人次包括在航程中其他站上落的乘客人次。

It refers to the origin of arrival trip or the destination of departure trip. Figures on passenger journeys include those boarding or alighting at other stop(s) of the trip.

資料來源：(A) 海事處客運碼頭組
Data Sources: Ferry Terminals Section, Marine Department

(B) 香港國際機場客運碼頭服務有限公司
Hong Kong International Airport Ferry Terminal Services Ltd.

表16
TABLE 16

2017年按主要貨物裝卸地點分析貨櫃吞吐量
Container Throughput by Main Cargo Handling Location, 2017

千個標準貨櫃單位
'000 TEUs

類別 Category	葵青貨櫃碼頭 Kwai Tsing Container Terminals			葵青貨櫃碼頭以外 Other than Kwai Tsing Container Terminals			總計 Total
	海運 Seaborne	河運 River	小計 Sub-total	海運 Seaborne	河運 River	小計 Sub-total	
裝上 Loaded	(%)	(%)	(%)	(%)	(%)	(%)	(%)
載貨貨櫃 Laden Container	5 574 (+8.0)	1 438 (-1.4)	7 013 (+5.9)	447 (-9.3)	1 084 (+3.0)	1 532 (-0.9)	8 545 (+4.6)
空貨櫃 Empty Container	594 (+17.2)	174 (+2.3)	767 (+13.4)	74 (+130.2)	616 (-2.6)	691 (+3.9)	1 458 (+8.7)
小計 Sub-total	6 168 (+8.8)	1 612 (-1.0)	7 780 (+6.6)	522 (-0.7)	1 701 (+0.9)	2 223 (+0.5)	10 003 (+5.2)
卸下 Discharged							
載貨貨櫃 Laden Container	6 147 (+7.7)	1 260 (-3.8)	7 406 (+5.6)	696 (-8.1)	1 105 (+6.2)	1 801 (+0.2)	9 207 (+4.5)
空貨櫃 Empty Container	1 028 (+18.6)	22 (-12.2)	1 049 (+17.7)	61 (+49.3)	450 (-19.7)	511 (-15.0)	1 560 (+4.5)
小計 Sub-total	7 174 (+9.1)	1 281 (-3.9)	8 456 (+6.9)	757 (-5.1)	1 555 (-2.9)	2 312 (-3.6)	10 768 (+4.5)
合計 Overall							
載貨貨櫃 Laden Container	11 721 (+7.9)	2 698 (-2.5)	14 419 (+5.7)	1 143 (-8.6)	2 190 (+4.6)	3 333 (-0.3)	17 752 (+4.6)
空貨櫃 Empty Container	1 621 (+18.1)	195 (+0.4)	1 817 (+15.9)	136 (+84.9)	1 066 (-10.6)	1 202 (-5.1)	3 018 (+6.5)
總計 Total	13 342 (+9.0)	2 893 (-2.3)	16 236 (+6.8)	1 279 (-3.4)	3 255 (-0.9)	4 534 (-1.6)	20 770 (+4.8)

資料來源：政府統計處外發加工貿易及船務統計組及海事處統計組

Data Sources: Outward Processing and Shipping Statistics Section, Census and Statistics Department and Statistics Section, Marine Department

表 17
TABLE 17

2017 年按葵青貨櫃碼頭以外的主要貨物裝卸地點分析貨櫃吞吐量
Container Throughput by Main Cargo Handling Location Other than Kwai Tsing Container Terminals, 2017

千個標準貨櫃單位
'000 TEUs

主要貨物裝卸地點 (葵青貨櫃碼頭以外) Main Cargo Handling Location (Other than Kwai Tsing Container Terminals)	海運 Seaborne				河運 River				總計 Total	
	卸下 Discharged		裝上 Loaded		卸下 Discharged		裝上 Loaded			
	載貨貨櫃 Laden	空貨櫃 Empty	載貨貨櫃 Laden	空貨櫃 Empty	載貨貨櫃 Laden	空貨櫃 Empty	載貨貨櫃 Laden	空貨櫃 Empty	載貨貨櫃 Laden	空貨櫃 Empty
	(%)	(%)	(%)	(%)	(%)	(%)	(%)	(%)	(%)	(%)
泊位和倉庫碼頭 Berths and Wharves	115 (+19.7)	23 (+41.3)	80 (-13.5)	19 (+109.9)	891 (+3.8)	422 (-19.8)	953 (+0.7)	471 (-2.1)	2 040 (+2.3)	935 (-9.5)
碇泊處和浮泡 Anchorages and buoys	581 (-12.1)	38 (+54.4)	367 (-8.4)	55 (+138.1)	214 (+17.4)	27 (-17.6)	131 (+24.5)	145 (-4.2)	1 293 (-4.2)	266 (+14.4)
總計 Total	696 (-8.1)	61 (+49.3)	447 (-9.3)	74 (+130.2)	1 105 (+6.2)	450 (-19.7)	1 084 (+3.0)	616 (-2.6)	3 333 (-0.3)	1 202 (-5.1)

資料來源：政府統計處外發加工貿易及船務統計組及海事處統計組

Data Sources: Outward Processing and Shipping Statistics Section, Census and Statistics Department and Statistics Section, Marine Department

表 18
TABLE 18

2017 年按貨物種類及運輸方式劃分的裝卸港口貨物
Port Cargo Discharged/Loaded by Cargo Type and Mode of Transport, 2017

千公噸
'000 Tonnes

貨物種類 Cargo Type	海運 Seaborne		河運 River		總計 Total	
	卸下 Discharged	裝上 Loaded	卸下 Discharged	裝上 Loaded	卸下 Discharged	裝上 Loaded
	(%)	(%)	(%)	(%)	(%)	(%)
包裝散貨 Break bulk cargo	5 726 (-15.0)	291 (-24.7)	2 073 (+7.4)	2 056 (-14.6)	7 800 (-10.0)	2 346 (-16.0)
貨櫃貨物 Containerised cargo	76 753 (+8.5)	56 998 (+8.0)	22 470 (-0.6)	30 592 (+3.0)	99 223 (+6.3)	87 591 (+6.2)
無包裝液態散貨 Unpacked liquid bulk cargo	20 458 (+16.6)	189 (-23.8)	1 280 (-1.2)	222 (-10.5)	21 738 (+15.4)	411 (-17.2)
無包裝固態散貨 Unpacked solid bulk cargo	15 935 (+4.5)	539 (+38.5)	29 882 (+103.8)	16 081 (-18.8)	45 817 (+53.2)	16 620 (-17.7)
總計 Total	118 873 (+7.8)	58 017 (+7.9)	55 705 (+37.6)	48 951 (-6.2)	174 578 (+15.8)	106 967 (+1.0)

資料來源：政府統計處外發加工貿易及船務統計組
Data Source: Outward Processing and Shipping Statistics Section, Census and Statistics Department

表 19
TABLE 19

海港繫泊浮泡統計數字
Harbour Mooring Buoys Statistics

A. 浮泡數目 (年底數字) Number of Buoys (Figures as at end of the year)	2016	2017
"A 級" 繫泊浮泡數目 No. of "A Class" mooring buoys	12	12
"B 級" 繫泊浮泡數目 No. of "B Class" mooring buoys	4	4

B. 使用情況 Usage	2016	2017
"A 級" 浮泡訂用日數 Days booked for "A Class" buoys	1 141	1 007
"B 級" 浮泡訂用日數 Days booked for "B Class" buoys	263	168
"A 級" 浮泡訂用百分率 Percentage of "A Class" buoys used based on booking	27.9%	23.1%
"B 級" 浮泡訂用百分率 Percentage of "B Class" buoys used based on booking	20.1%	11.5%
上述數字只顯示訂用情況，實際使用率則如下： Whilst the above figures are indicative of booking usage, the actual physical occupancy rates are as follows:		
"A 級" 浮泡 "A Class" buoys	21.4%	22.2%
"B 級" 浮泡 "B Class" buoys	15.4%	11.3%

C. 浮泡保養 Buoys Maintenance	2016	2017
按期保養的燈浮標 Light Buoys maintained	119	126
按期保養的養魚區浮泡 Mariculture Buoys maintained	178	178
按期保養的小型繫泊浮泡 Minor Mooring maintained	163	161
按期保養的大型繫泊浮泡 Major Mooring maintained	40	40
按期保養的 "A 級" 海港繫泊浮泡 "A Class" Harbour Mooring maintained	12	12
按期保養的 "B 級" 海港繫泊浮泡 "B Class" Harbour Mooring maintained	4	4

資料來源： (A) & (B) 海事處船隻航行監察中心
Data Sources: Vessel Traffic Centre, Marine Department
(C) 海事處港口後勤組
Port Logistics Section, Marine Department

表 20
TABLE 20

2017 年按分布地點分析香港私人繫泊設備數目
Number of Private Moorings Laid in Hong Kong by Location, 2017

地點	Location	私人繫泊設備 數目 Number of Private Moorings
香港仔南避風塘及銅鑼灣避風塘	Aberdeen South Typhoon Shelter and Causeway Bay Typhoon Shelter	
香港仔南避風塘 (白沙灣)	Aberdeen South Typhoon Shelter (Pak Sha Wan)	1
香港仔南避風塘 (布廠灣)	Aberdeen South Typhoon Shelter (Po Chong Wan)	447
銅鑼灣避風塘	Causeway Bay Typhoon Shelter	186
小計	Sub-total	634
其他避風塘及 維多利亞港口界限以內的其他地方	Other Typhoon Shelters and Elsewhere within the Limits of Victoria Port	
長洲避風塘	Cheung Chau Typhoon Shelter	9
荔枝角	Lai Chi Kok	3
新油麻地避風塘	New Yau Ma Tei Typhoon Shelter	16
新油麻地避風塘 (防波堤外)	New Yau Ma Tei Typhoon Shelter (Outside Breakwater)	28
油麻地錨地以北	North of Yau Ma Tei Anchorage	1
藍巴勒海峽避風塘 (防波堤外)	Rambler Channel Typhoon Shelter (Outside Breakwater)	6
三家村避風塘	Sam Ka Tsuen Typhoon Shelter	1
汀九	Ting Kau	63
土瓜灣	To Kwa Wan	4
青衣北	Tsing Yi North	4
荃灣	Tsuen Wan	90
屯門避風塘	Tuen Mun Typhoon Shelter	7
小計	Sub-total	232

表 20 – 續
TABLE 20 – Cont'd

地點	Location	私人繫泊設備 數目 Number of Private Moorings
在香港水域內的其他地方	Elsewhere in the Waters of Hong Kong	
香港仔西避風塘 (防波堤外)	Aberdeen West Typhoon Shelter (Outside Breakwater)	14
赤徑口 (大灘海峽)	Chek Keng Hau (Long Harbour)	1
長沙欄	Cheung Sha Lan	33
愉景灣	Discovery Bay	6
下尾灣 (南丫島發電廠)	Ha Mei Wan (Lamma Island Power Station)	3
白沙灣	Hebe Haven	679
將軍澳	Junk Bay	1
滘西洲	Kau Sai Chau	4
高塘口 (大灘海峽)	Ko Tong Hau (Long Harbour)	1
鹿洲灣	Luk Chau Wan	1
龍鼓灘	Lung Kwu Tan	1
熨波洲	Middle Island	100
稔樹灣	Nim Shue Wan	13
北大嶼山	North Lantau Island	1
船灣海	Shuen Wan Hoi	40
赤柱正灘	Stanley Main Beach	4
大欖	Tai Lam	3
大美督	Tai Mei Tuk	32
大網仔	Tai Mong Tsai	7
大網仔 (阿公灣)	Tai Mong Tsai (A Kung Wan)	3
大潭港	Tai Tam Harbour	48
斬竹灣	Tsam Chuk Wan	10
青衣西	Tsing Yi West	2
早禾坑	Tso Wo Hang	18
屯門避風塘 (防波堤外)	Tuen Mun Typhoon Shelter (Outside Breakwater)	6
往灣 (黃竹角海)	Wong Wan (Wong Chuk Kok Hoi)	1
榕樹灣	Yung Shue Wan	2
小計	Sub-total	1 034
總計	Total	1 900

資料來源： 海事處私用繫泊分組
Data Source: Private Mooring Sub-unit, Marine Department

表 21
TABLE 21

碇泊處一覽 (截至 2017 年年底)
List of Anchorages (as at end 2017)

碇泊處 Anchorages		面積 (公頃) Area (hectares)
A. 檢疫及入境船隻碇泊處 Quarantine and Immigration Anchorages		
1. 東面檢疫及入境船隻碇泊處	Eastern Quarantine and Immigration Anchorage	35.1
2. 屯門入境船隻碇泊處	Tuen Mun Immigration Anchorage	89.9
3. 西面檢疫及入境船隻碇泊處	Western Quarantine and Immigration Anchorage	121.1
小計	Sub-total	246.1
B. 危險品碇泊處 Dangerous Goods Anchorages		
1. 將軍澳危險品碇泊處	Junk Bay Dangerous Goods Anchorage	28.9
2. 交椅洲危險品碇泊處	Kau Yi Chau Dangerous Goods Anchorage	288.2
3. 大鵬灣危險品碇泊處	Mirs Bay Dangerous Goods Anchorage	316.5
4. 糧船灣海危險品碇泊處	Rocky Harbour Dangerous Goods Anchorage	26.9
5. 南丫島南危險品碇泊處	South Lamma Dangerous Goods Anchorage	228.5
6. 荃灣危險品碇泊處	Tsuen Wan Dangerous Goods Anchorage	61.9
7. 西面危險品碇泊處	Western Dangerous Goods Anchorage	220.8
8. 危險品留用碇泊處	Reserved Dangerous Goods Anchorage	37.3
小計	Sub-total	1 209.0
C. 維修碇泊處 Servicing Anchorages		
1. 奇力 1 號碇泊處	Kellett Anchorage No.1	74.7
2. 奇力 2 號碇泊處	Kellett Anchorage No.2	230.4
3. 奇力 3 號碇泊處	Kellett Anchorage No.3	102.8
4. 馬灣碇泊處	Ma Wan Anchorage	138.4
5. 南丫島北碇泊處	North Lamma Anchorage	375.1
6. 南丫島西北碇泊處	North-west Lamma Anchorage	553.9
7. 半山石碇泊處	Pun Shan Shek Anchorage	352.1
8. 深水角 1 號碇泊處	Sham Shui Kok Anchorage No.1	72.6
9. 深水角 2 號碇泊處	Sham Shui Kok Anchorage No.2	35.6
10. 西面 1 號碇泊處	Western Anchorage No.1	310.6
11. 西面 2 號碇泊處	Western Anchorage No.2	278.7
12. 西面 3 號碇泊處	Western Anchorage No.3	272.4
13. 油麻地碇泊處	Yau Ma Tei Anchorage	105.0
小計	Sub-total	2 902.3

表 21 – 續
TABLE 21 – Cont'd

碇泊處 Anchorages		面積 (公頃) Area (hectares)
D. 領航特別碇泊處 Pilotage Special Anchorages		
1. 南丫島東南碇泊處	South-east Lamma Anchorage	285.5
2. 南丫島西南碇泊處	South-west Lamma Anchorage	228.4
3. 龍鼓水道碇泊處	Urmston Road Anchorage	190.0
小計	Sub-total	703.9
E. 避風碇泊處 Sheltered Anchorages		
1. 柴灣貨物裝卸灣	Chai Wan Cargo Basin	11.2
2. 長沙欄	Cheung Sha Lan	6.7
3. 吉澳	Kat O	1.6
4. 熨波洲	Middle Island	6.9
5. 稔樹灣	Nim Shue Wan	2.3
6. 白沙灣	Pak Sha Wan (Hebe Haven)	84.0
7. 西貢	Sai Kung	4.3
8. 沙頭角	Sha Tau Kok	0.6
9. 船灣海	Shuen Wan Hoi	26.0
10. 聖士提反灣	St. Stephen's Bay	1.3
11. 大美督	Tai Mei Tuk	12.3
12. 大澳	Tai O	4.0
13. 大潭港	Tai Tam Harbour	5.7
14. 汀九	Ting Kau	0.7
15. 斬竹灣	Tsam Chuk Wan	7.5
16. 荃灣	Tsuen Wan	3.7
小計	Sub-total	178.8
總計	Total	5 240.1

資料來源： 海事處策劃、發展協調及港口保安部

Data Source: Planning, Development & Port Security Branch, Marine Department

表 22
TABLE 22

避風塘一覽 (截至 2017 年年底)
List of Typhoon Shelters (as at end 2017)

避風塘	Typhoon Shelters	面積 (公頃) Area (hectares)
1. 香港仔南避風塘	Aberdeen South Typhoon Shelter	26.1
2. 香港仔西避風塘	Aberdeen West Typhoon Shelter	34.2
3. 銅鑼灣避風塘	Causeway Bay Typhoon Shelter	10.6
4. 長洲避風塘	Cheung Chau Typhoon Shelter	50.0
5. 喜靈洲避風塘	Hei Ling Chau Typhoon Shelter	76.6
6. 觀塘避風塘	Kwun Tong Typhoon Shelter	33.8
7. 新油麻地避風塘	New Yau Ma Tei Typhoon Shelter	64.6
8. 藍巴勒海峽避風塘	Rambler Channel Typhoon Shelter	12.9
9. 三家村避風塘	Sam Ka Tsuen Typhoon Shelter	1.9
10. 筲箕灣避風塘	Shau Kei Wan Typhoon Shelter	17.2
11. 船灣避風塘	Shuen Wan Typhoon Shelter	10.3
12. 土瓜灣避風塘	To Kwa Wan Typhoon Shelter	14.8
13. 屯門避風塘	Tuen Mun Typhoon Shelter	56.8
14. 鹽田仔避風塘	Yim Tin Tsai Typhoon Shelter	9.2
總計	Total	419.0

資料來源：海事處策劃、發展協調及港口保安部

Data Source: Planning, Development & Port Security Branch, Marine Department

表 23
TABLE 23

公眾貨物裝卸區一覽 (截至 2017 年年底)
List of Public Cargo Working Areas (as at end 2017)

公眾貨物裝卸區	Public Cargo Working Area	面積 (公頃) Area (hectares)	符合發牌條件之 停泊位長度 (米) Licensable Seafrontage (metres)
1. 柴灣公眾貨物裝卸區	Chai Wan Public Cargo Working Area	2.1	548
2. 新油麻地公眾貨物裝卸區	New Yau Ma Tei Public Cargo Working Area	6.8	1 212
3. 藍巴勒海峽公眾貨物裝卸區	Rambler Channel Public Cargo Working Area	4.1	1 036
4. 昂船洲公眾貨物裝卸區	Stonecutters Island Public Cargo Working Area	2.9	560
5. 屯門公眾貨物裝卸區	Tuen Mun Public Cargo Working Area	3.3	616
6. 西區公眾貨物裝卸區	Western District Public Cargo Working Area	3.3	880
總計	Total	22.5	4 852

資料來源：海事處貨物裝卸組

Data Source: Cargo Handling Section, Marine Department

表 24
TABLE 24

垃圾收集、油污和檢控個案統計數字
Refuse Collection, Oil Pollution and Prosecution Statistics

A. 垃圾收集和油污事故
Refuse Collection and Oil Pollution Incident

		2016	2017
1. 從海港收集的垃圾 (公噸)	Refuse collected from harbour (tonnes)	11 794	11 642
2. 從船舶收集的垃圾 (公噸)	Refuse collected from vessels (tonnes)	4 404	4 402
3. 接報的疑似油污事故 (宗)	Alleged oil pollution incidents reported (cases)	155	169

B. 檢控統計數字
Prosecution Statistics

罪行 Offence	陳詞／聆訊個案 No. of Cases Heard		定罪個案 No. of Cases Convicted		罰款 Fine (HK\$)	
	2016	2017	2016	2017	2016	2017
1. 違反碰撞規例 Breach of collision regulations	29	22	25	22	58,650	56,500
2. 違反牌照／准許證條件 Breach of licence/permit conditions	105	84	105	84	110,950	108,100
3. 未獲允許運載乘客／超額運載乘客 Carrying passengers without permission/excessive passengers	30	31	29	31	42,150	35,400
4. 不遵從指示 Failing to comply with direction	27	32	27	31	84,900	116,500
5. 沒有採取合理措施以確保受僱人在工程進行時戴著適當的安全頭盔 Failing to ensure the person employed to wear an appropriate safety helmet	31	30	31	30	26,150	47,150
6. 未獲允許讓該船隻緊靠著另一船舶而停放 Lying alongside another vessel without permission	55	62	55	62	50,250	60,900
7. 靠泊於已展示禁止船隻靠泊告示的岸壁／登岸梯級 Lying alongside seawall/landing steps prohibited by notice	1	5	1	5	850	4,050
8. 船上沒有合格船長／輪機員 No qualified master/engineer on board	187	191	187	188	160,300	196,850
9. 在沒有有效驗船證明書的情況下操作 Operating a vessel without valid certificate of survey	20	44	20	44	19,550	50,150
10. 沒持有效證明書的人進行貨物處理 Person carrying out cargo handling without certificates	45	54	45	54	64,450	101,700
11. 超速行駛 Steaming in excessive speed	33	24	32	24	42,450	39,700
12. 使用沒有第三者風險保險的船隻 Using a vessel not insured against third party risk	32	36	32	36	41,900	64,700
13. 船隻未有領牌／並無有效牌照 Vessel was not licensed/did not have a valid licence	162	236	157	224	367,000	452,400
14. 其他海事罪行 Other marine offences	373	526	353	510	628,550	702,550
總計 Total	1 130	1 377	1 099	1 345	1,698,100	2,036,650

資料來源： (A) 海事處港口後勤組
Data Sources: Port Logistics Section, Marine Department

(B) 海事處檢控小組
Prosecution Unit, Marine Department

表 25
TABLE 25

按噸位等級分析香港領牌船隻 (截至 2017 年年底)
Hong Kong Licensed Vessels by Tonnage Classification (as at year end 2017)

船隻類型 Vessel Type		<=60 淨註冊噸位 <=60 NRT	>60 - 300 淨註冊噸位 >60 - 300 NRT	>300 淨註冊噸位 >300 NRT	總計 Total
第 I 類 Class I	(a) 渡輪船隻 Ferry Vessel	10	28	9	47
	(b) 水上食肆 Floating Restaurant	0	0	2	2
	(c) 小輪 Launch	189	51	1	241
	(d) 多用途船隻 Multi-purposes Vessel	10	6	0	16
	(e) 原始船隻 Primitive Vessel	68	1	0	69
	(f) 固定船隻 Stationary Vessel	0	0	0	0
	小計 Sub-total	277	86	12	375
第 II 類 Class II	(a) 起重機躉船 Crane Barge	0	2	7	9
	(b) 危險品運輸船 Dangerous Goods Carrier	1	10	17	28
	(c) 挖泥船 Dredger	0	3	0	3
	(d) 乾貨貨船 Dry Cargo Vessel	36	50	12	98
	(e) 非自航駁船 Dumb Lighter	19	52	453	524
	(f) 食油運輸船 Edible Oil Carrier	0	0	13	13
	(g) 平面工作躉 Flat-top Work Barge	21	21	26	68
	(h) 浮塢 Floating Dock	0	0	3	3
	(i) 水上工場 Floating Workshop	0	1	0	1
	(j) 開底躉船 Hopper Barge	0	2	28	30
	(k) 登岸平台 Landing Platform	44	0	1	45
	(l) 登岸浮躉 Landing Pontoon	26	30	13	69
	(m) 有毒液體物質運輸船 Noxious Liquid Substance Carrier	0	0	1	1
	(n) 石油運輸船 Oil Carrier	15	98	48	161
	(o) 領港船 Pilot Boat	23	0	0	23

表 25 – 續
TABLE 25 – Cont'd

船隻類型 Vessel Type		<=60 淨註冊噸位 <=60 NRT	>60 - 300 淨註冊噸位 >60 - 300 NRT	>300 淨註冊噸位 >300 NRT	總計 Total
第 II 類 Class II (續) (Cont'd)	(p) 特別用途船隻 Special Purpose Vessel	22	9	49	80
	(q) 固定船隻 Stationary Vessel	93	23	5	121
	(r) 交通船 Transportation Boat	29	0	0	29
	(s) 交通舢舨 Transportation Sampan	73	0	0	73
	(t) 拖船 Tug	83	107	0	190
	(u) 供水船 Water Boat	13	6	0	19
	(v) 工作船 Work Boat	283	15	1	299
	小計 Sub-total	781	429	677	1 887
第 III 類 Class III	(a) 運魚船 Fish Carrier	16	14	0	30
	(b) 漁船舢舨 Fishing Sampan	1 942	0	0	1 942
	(c) 漁船 Fishing Vessel	584	1 365	0	1 949
	(d) 舷外機開敞式舢舨 Outboard Open Sampan	2 581	0	0	2 581
	小計 Sub-total	5 123	1 379	0	6 502
第 IV 類 Class IV	(a) 機械輔助帆船 Auxiliary Powered Yacht	N.A.	N.A.	N.A.	780
	(b) 遊樂船 Cruiser	N.A.	N.A.	N.A.	2 709
	(c) 開敞式遊樂船 Open Cruiser	N.A.	N.A.	N.A.	6 459
	小計 Sub-total	N.A.	N.A.	N.A.	9 948
總計 Total		6 181⁽¹⁾	1 894⁽¹⁾	689⁽¹⁾	18 712⁽²⁾

註釋： (1) 不包括第 IV 類領牌船隻的數字。

Notes: Not including Class IV licensed vessels.

(2) 包括 56 艘閒置船隻。根據《商船(本地船隻)(住家船隻)規例》(第 548A 章) 領牌的 4 艘住家船隻並不包括在內。

Figures include 56 laid-up vessels. The 4 dwelling vessels which are licensed under the Merchant Shipping (Local Vessels) (Dwelling Vessels) Regulation (Cap. 548A) are not included.

資料來源： 海事處牌照及關務組

Data Source: Licensing and Port Formalities Section, Marine Department

表 26
TABLE 26

船舶安全監督統計數字
Ship Safety Statistics

A. 貨船安全統計數字 Cargo Ships Safety Statistics	2016	2017
香港註冊貨船品質審查／檢驗 Hong Kong Registered Cargo Ships Quality Checked/Inspected <ol style="list-style-type: none"> 1. 品質審查的註冊貨船數目 No. of quality checks on Hong Kong registered cargo ships 2. 品質檢驗和稽核貨船數目 No. of flag state quality control ship inspections and company visits 3. 審核船體、機械和設備圖則數目 No. of plans examined in respect of hull, machinery and equipment 	<p>2 288</p> <p>87</p> <p>233</p>	<p>2 333</p> <p>86</p> <p>189</p>
貨船設備安全證明書 Cargo Ship Safety Equipment Certificate (SEC) <ol style="list-style-type: none"> 1. 所簽發的豁免證明書數目 No. of exemption certificates issued 2. 應其他國家機關要求而檢驗的外來船舶，以簽發設備安全證明書 Foreign ships surveyed at the request of other national authorities for the issue of SEC 	<p>728</p> <p>0</p>	<p>731</p> <p>0</p>
貨船無線電安全證明書 Cargo Ship Safety Radio Certificate (SRC) <ol style="list-style-type: none"> 1. 所簽發的豁免證明書數目 No. of exemption certificates issued 2. 應其他國家機關要求而檢驗的外來船舶，以簽發無線電安全證明書 Foreign ships surveyed at the request of other national authorities for the issue of SRC 	<p>110</p> <p>0</p>	<p>93</p> <p>0</p>
其他 Others <ol style="list-style-type: none"> 1. 所簽發的《海員培訓、發證和值班標準國際公約》最低安全配員證明書 Standards of Training, Certification and Watchkeeping Minimum Safe Manning Certificate issued 2. 對構造安全、設備安全、無線電安全證明書的監察，包括中期檢驗 Safety Construction, Equipment and Radio Certificates monitored (including intermediate surveys) 3. 對國際載重線證明書的監察，包括定期檢驗 International Load Line Certificate monitored (including periodic surveys) 4. 對國際防止油污證明書、油污損害民事責任保險證明書或其他保證證明書及燃油污染損害民事責任保險證明書或其他經濟擔保證明書的監察 – 續期、年度／中期檢驗 International Oil Pollution Prevention (IOPP) Certificate, Certificate of Insurance or Other Financial Security in Respect of Civil Liability for Oil Pollution Damage and Certificate of Insurance or Other Financial Security in Respect of Civil Liability for Bunker Oil Pollution Damage monitored (including renewal, annual/intermediate surveys) 5. 對新船公司所作的國際安全管理稽核 International Safety Management (ISM) audits of new shipping companies 6. 其他檢驗 (例如合格證明書等) Other surveys (e.g. Certificates of Fitness etc.) 	<p>2 245</p> <p>1 808</p> <p>603</p> <p>3 932</p> <p>18</p> <p>0</p>	<p>1 068</p> <p>1 851</p> <p>617</p> <p>3 170</p> <p>22</p> <p>0</p>

表 26 – 續
TABLE 26 – Cont'd

B. 客船安全統計數字 Passenger Ships Safety Statistics	2016	2017
乘客定額及船舶安全證明書 Passenger and Ship Safety Certificates		
1. 客船安全證明書 – 國際航線 Passenger Ship Safety Certificate (PSSC) – International Voyage	0	0
2. 客船安全證明書 – 短途國際航線 Passenger Ship Safety Certificate (PSSC) – Short International Voyage	1	1
3. 高速船安全證明書 – 內河航限 High Speed Craft Safety Certificate (HSCSC) – River Trade Limits	69	68
4. 延長客船安全證明書有效期 Extensions to PSSC	0	0
5. 高速船安全證明書檢驗船舶總數 Total no. of vessels surveyed for HSCSC	69	68
6. 受檢驗的客船無線電裝置 Passenger ship radio installations surveyed	69	68
7. 所簽發的載重線證明書數目 No. of Load Line Certificates issued	10	7
8. 所簽發的載重線豁免證明書數目 No. of Load Line Exemption Certificates issued	10	8
9. 所簽發的國際防止油污證明書及增補數目 No. of IOPP Certificates with Supplement issued	13	13
10. 所簽發的國際防止油污豁免證明書數目 No. of IOPP Exemption Certificates issued	0	0
11. 所簽發的最低安全配員證明書數目 No. of Minimum Safe Manning Certificates issued	49	1
12. 對船公司所作的國際安全管理稽核 ISM audits of shipping companies	3	5
13. 對船舶所作的國際安全管理稽核 ISM audits of ships	14	17
14. 所簽發的國際安全管理稽核符合證明數目 No. of ISM Document of Compliance issued	0	1
15. 所簽發的國際安全管理稽核安全管理證明書數目 No. of ISM Safety Management Certificates issued	8	6
16. 所簽發的臨時國際安全管理稽核安全管理證明書數目 No. of Interim ISM Safety Management Certificates issued	0	1
雜項檢查，圖則審核和設備 Miscellaneous Inspection, Plans Approval and Equipment		
1. 審核客船船體、機械和設備圖則數目 No. of plans examined for hull, machinery and equipment of passenger ships	39	45
2. 簽發檢查證明書、雜項檢驗／檢查數目 No. of certificates of inspection issued, miscellaneous surveys/inspections	146	155

表 26 – 續
TABLE 26 – Cont'd

C. 港口國監督統計數字 Port State Control Statistics	2016	2017
在香港特別行政區港口內進行的港口國監督檢查⁽¹⁾： Port State Control Inspections⁽¹⁾ in the Harbour of the Hong Kong Special Administrative Region:		
1. 在履行身為港口國監督委員而對《東京諒解備忘錄》應有的責任下，受港口國監督檢查的個別外來船舶數目 (遠洋船舶) No. of individual foreign ships inspected under the obligation to Tokyo Memorandum of Understanding (MOU), as a member Port State of the Committee (Ocean ships)	630	632
2. 受港口國監督檢查的個別內地註冊／領牌船舶數目 (沿岸船舶) No. of individual Mainland registered/licensed ships inspected (Coastal ships)	63	72
3. 對遠洋及沿岸船舶進行港口國監督檢查 (包括複檢) 總次數 Total no. of Port State Control inspections (including re-inspections) carried out on ocean and coastal ships	727	786
4. 因低於安全標準而被扣留在港的遠洋及沿岸船舶總次數 Total no. of detentions of sub-standard ocean and coastal ships in Hong Kong	31	37

註釋：(1) 就港口國監督檢查方面而言，遠洋船舶是指懸掛中國（不包括香港註冊）或外國旗的公約船舶和懸掛外國旗的非公約船舶，而沿岸船舶是指中國內地註冊／領牌的非公約船舶。

Note: For Port State Control inspection, ocean ships refer to those convention ships hoisting flags of China (excluding Hong Kong registered) or foreign countries, and non-convention ships registered with foreign countries. Coastal ships are those non-convention ships registered with/licensed by the Mainland of China.

資料來源：(A) 海事處貨船安全組
Data Sources: Cargo Ships Safety Section, Marine Department

(B) 海事處客船安全組
Passenger Ships Safety Section, Marine Department

(C) 海事處港口國監督組
Port State Control Section, Marine Department

表 27
TABLE 27

本地船隻安全／海事工業安全／海事意外統計數字
Local Vessels Safety/Marine Industrial Safety/Marine Accidents Statistics

A. 船舶的檢驗和檢查統計 Statistics on Surveys and Inspections of Vessels	2016*	2017#
I. 給本地船隻簽發／批註的證明書／適合聲明／紀錄等 Certificates/Declarations/Records etc. Issued/Endorsed to Local Vessels <ol style="list-style-type: none"> 1. 簽發／批註乾舷勘定證明書數目 No. of Freeboard Assignment Certificates issued/endorsed 2. 簽發安全設備檢驗紀錄數目 No. of Survey Records of Safety Equipment issued 3. 簽發／批註載重線證明書數目 No. of Load Line Certificates issued/endorsed 4. 簽發噸位丈量記錄數目 No. of Records of Tonnage Measurement issued 5. 簽發／批註散裝有毒液體物質的防污證明書數目 No. of Pollution Prevention Certificates for the Carriage of Noxious Liquid Substances in Bulk issued/endorsed 6. 簽發適合運載危險品聲明數目 No. of Declarations of Fitness for the Carriage of Dangerous Goods issued 7. 簽發香港防止油類污染證明書數目 No. of Hong Kong Oil Pollution Prevention Certificates issued 8. 簽發／批註香港防止空氣污染證明書數目 No. of Hong Kong Air Pollution Prevention Certificates issued/endorsed 9. 給本地船隻簽發驗船證明書數目 No. of Certificates of Survey issued to Local Vessels <ul style="list-style-type: none"> - 第 I 類 Class I - 第 II 類 Class II - 第 III 類 Class III - 第 IV 類 Class IV 		
總計 Total	3 007	3 130
II. 審批圖則／文件 Plans/Documents Examined <ol style="list-style-type: none"> 1. 船隻傾斜測試及穩性確定數目 No. of Vessels Inclining tested and Stability Information assessed 2. 審核本地船隻的船體、機械和設備圖則數目 No. of Plans of Hull, Machinery and Equipment examined for Local Vessels 		
總計 Total	2 779	3 242

表 27 – 續
TABLE 27 – Cont'd

A. 船舶的檢驗和檢查統計 (續) Statistics on Surveys and Inspections of Vessels (Cont'd)	2016*	2017#
III. 檢驗本地船隻數目 (包括新船、現有船隻、抽查船隻及被扣留的船隻) Local Vessels Inspected (New, Existing, Spot-check Vessels and Detained Vessels) <ol style="list-style-type: none"> 1. 執行其他政府部門要求檢查的船隻數目 No. of Inspections of Vessels for Other Government Departments 2. 為簽發證明書而接受檢驗的本地船隻數目 No. of local vessels inspected for issuing certificates <ul style="list-style-type: none"> 完成首次檢驗而新領牌的船隻數目 No. of Newly Licensed Vessels after Completing Initial Survey 在本港檢驗本地船隻的數目 No. of Local Vessels Inspected Locally 	<p style="text-align: center;">60</p> <p style="text-align: center;">2 001</p> <p style="text-align: center;">149</p> <p style="text-align: center;">1 852</p>	<p style="text-align: center;">39</p> <p style="text-align: center;">2 139</p> <p style="text-align: center;">216</p> <p style="text-align: center;">1 923</p>
總計 Total	<p style="text-align: center;">2 061</p>	<p style="text-align: center;">2 178</p>
IV. 檢驗本地船隻次數 (包括新船、現有船隻、抽查船隻及被扣留的船隻) Inspection Visits Made to Local Vessels (New, Existing, Spot-check Vessels and Detained Vessels) <ol style="list-style-type: none"> 1. 檢驗碰撞後破損的本地船隻次數 No. of Inspection Surveys of Damaged Local Vessels after Collision 2. 抽查及複驗本地船隻次數 No. of Spot Checks and Audit Checks on Local Vessels 3. 海外檢驗本地船隻次數 No. of Overseas Visits for Inspection of Local Vessels 4. 本地船隻在本港首次及定期檢查次數 No. of Initial and Periodical Inspection Visits Made Locally to Local Vessels 	<p style="text-align: center;">13</p> <p style="text-align: center;">104</p> <p style="text-align: center;">139</p> <p style="text-align: center;">2 857</p>	<p style="text-align: center;">5</p> <p style="text-align: center;">154</p> <p style="text-align: center;">105</p> <p style="text-align: center;">3 130</p>
總計 Total	<p style="text-align: center;">3 113</p>	<p style="text-align: center;">3 394</p>
V. 舉辦安全講座及研討會 Talks and Seminars Conducted	<p style="text-align: center;">0</p>	<p style="text-align: center;">0</p>

表 27 – 續
TABLE 27 – Cont'd

B. 檢查正在進行工程的船舶及調查海上工業意外事故等 Inspections of Vessels Engaged in Works and Investigations of Marine Industrial Accidents etc.	2016	2017
I. 貨櫃檢查數目 No. of Containers Inspected	8 586	7 962
II. 海事工業安全檢查 (不包括貨櫃檢查) Marine Industrial Safety Inspections (not including inspection of containers)		
1. 檢查正在修理的船舶 Inspections of Vessels Undergoing Repair	448	657
2. 檢查海事工程船舶 Inspections of Vessels Engaged in Marine Construction	182	355
3. 檢查遠洋船裝卸貨物工具 Cargo Gear Inspections on Ocean-going Vessels	111	119
4. 檢查遠洋船裝卸貨物 Stevedoring Inspections on Ocean-going Vessels	1 412	1 871
5. 檢查駁船裝卸貨物工具 Cargo Gear Inspections on Lighters	345	677
6. 檢查駁船裝卸貨物 Stevedoring Inspections on Lighters	1 021	1 281
總計 Total	3 519	4 960
III. 海事工業意外的調查及查詢數目 Marine Industrial Accidents Investigated/Inquired		
1. 調查致命的非海事工業意外 Non-marine Industrial Fatal Accidents investigated	0	0
2. 調查致命的海事工業意外 Marine Industrial Fatal Accidents investigated	1	4
3. 調查嚴重意外 Serious Accidents investigated	0	0
4. 調查嚴重意外 (無傷亡) Serious Accidents (No Casualty) investigated	0	0
5. 查詢非嚴重意外 Non-serious Accidents inquired	61*	67
總計 Total	62*	71

表 27 – 續
TABLE 27 – Cont'd

B. 檢查正在進行工程的船舶及調查海上工業意外事故等 (續) Inspections of Vessels Engaged in Works and Investigations of Marine Industrial Accidents etc. (Cont'd)	2016	2017
IV. 發生海事工業意外的數目 Marine Industrial Accidents Occurred <ol style="list-style-type: none"> 1. 修船意外總數 Total Ship Repair Accidents 2. 裝卸貨物意外總數 Total Cargo Handling Accidents 3. 海事工程意外總數 Total Marine Construction Accidents 		
總計 Total	84	88
V. 簽發修船許可證／轉介檢控小組的個案／發出警告信的數目 Letters of Permission to Undertake Repairs Issued/Cases Referred to Prosecutions Unit/Warning Letters Issued <ol style="list-style-type: none"> 1. 簽發修船許可證 Letters of Permission to Undertake Repairs issued 2. 轉介檢控小組的個案 Cases referred to Prosecutions Unit 3. 發出警告信 Warning Letters issued 		
總計 Total	4 196	3 603
VI. 海事工業安全的宣傳及教育 Promotion and Education on Marine Industrial Safety <ol style="list-style-type: none"> 1. 發出安全指令 Safety Directions issued 2. 出版或修訂的安全小冊子／單張／海報／貼紙數目 No. of Safety Pamphlets/Leaflets/Posters/Stickers published or revised 3. 出版或修訂的安全指南／工作守則數目 No. of Safety Guides/Codes of Practice published or revised 4. 安全講座及研討會的舉辦數目 No. of Safety Talks and Seminars conducted 5. 到訪船舶推廣安全 Safety Promotion Visits to Vessels 		
總計 Total	1 032	1 505

表 27 – 續
TABLE 27 – Cont'd

C. 香港註冊船舶的損失數目 ⁽¹⁾ Loss of Vessels Registered in Hong Kong ⁽¹⁾	2016	2017
損失船舶數目 Number Lost	1	2

D. 2017 年海上意外事故統計 Marine Accidents Statistics in 2017								
意外事故類別 Type of Accident	香港水域範圍以內 ⁽²⁾ Within Hong Kong Waters ⁽²⁾				香港水域範圍以外 ⁽³⁾ Outside Hong Kong Waters ⁽³⁾			
	宗數 No. of Cases	死亡人數 Persons Killed	受傷人數 Persons Injured	失蹤人數 Persons Missing	宗數 No. of Cases	死亡人數 Persons Killed	受傷人數 Persons Injured	失蹤人數 Persons Missing
相撞 Collision	144	0	12	0	38	15	2	13
擱淺／觸礁 Grounding/Stranding	25	0	0	0	17	0	0	0
沉沒／入水 Sinking/Foundering	30	0	0	0	3	0	0	10
火警／爆炸 Fire/Explosion	17	0	2	0	10	0	0	0
翻沉／傾斜 Capsized/Listing	20	1	0	0	0	0	0	0
接觸 Contact	46	0	14	0	16	0	0	0
其他 Others	86	0	1	0	46	0	0	0
總計 Total	368	1	29	0	130	15	2	23

表 27 – 續
TABLE 27 – Cont'd

E. 海上意外事故調查 Marine Accident Investigation	2016	2017
調查意外事故 《船舶及港口管制條例》、《商船 (本地船隻) 條例》及《商船條例》 Accidents Investigated Shipping and Port Control Ordinance, Merchant Shipping (Local Vessel) Ordinance and Merchant Shipping Ordinance	22	18
初步研訊 《商船條例》 Preliminary Inquiries Merchant Shipping Ordinance	0	0
領港研訊 《領港條例》 Pilotage Inquiries Pilotage Ordinance	0	0
海事法庭 Marine Courts	0	0
調查委員會 Board of Inquiry	1*	0
對調查委員會裁決提出上訴 Appeal against the Decision of Board of Inquiry	0	0

註釋：(1) 指因遇險而導致損失的船舶。

Notes: Refers to loss of vessels due to casualty or accident.

(2) 包括所有船舶 (如香港註冊及外國註冊船舶、本地領牌船隻、內河船隻、沿海船隻、政府船舶等等) 的意外及傷亡數字。

Including accidents and casualties figures of all vessels (such as Hong Kong registered and foreign registered vessels, local licensed vessels, river trade vessels, coastal vessels, government launches, etc.).

(3) 只包括在香港註冊或領牌的船舶的意外及傷亡數字。

Including accidents and casualties figures of Hong Kong registered vessels or local licensed vessels only.

資料來源：(A) 海事處本地船舶安全組

Data Sources: Local Vessels Safety Section, Marine Department

(B) 海事處海事工業安全組

Marine Industrial Safety Section, Marine Department

(C) 海事處船舶註冊及商船海員管理處

Shipping Registry and Mercantile Marine Office, Marine Department

(D) & (E) 海事處海事意外調查組

Marine Accident Investigation Section, Marine Department

表 28
TABLE 28

海員發證、註冊和僱用統計數字
Seafarers' Certification, Registration and Employment Statistics

A. 遠洋合格證明書 Seagoing Certificates of Competency		2016		2017	
		申請人數 Number of Applications	及格人數 Number of Successes	申請人數 Number of Applications	及格人數 Number of Successes
1. 商船船長及 甲板高級船員	Master Mariner and Deck Officer				
一級甲板高級船員 (商船船長)	Deck Officer Class 1 (Master Mariner)				
筆試	Written Examination	10	0	17	2
口試	Oral Examination	38	10	37	7
其他 ⁽¹⁾	Other Services ⁽¹⁾	62	55	73	72
二級甲板高級船員	Deck Officer Class 2				
筆試	Written Examination	63	16	85	26
口試	Oral Examination	4	1	14	2
其他 ⁽¹⁾	Other Services ⁽¹⁾	26	24	14	14
三級甲板高級船員	Deck Officer Class 3				
筆試	Written Examination	207	105	116	43
口試	Oral Examination	112	46	79	31
訊號	Signal	96	38	39	19
其他 ⁽¹⁾	Other Services ⁽¹⁾	63	57	47	47
小計	Sub-total	681	352	521	263
2. 輪機師	Marine Engineer Officer				
一級輪機師	Marine Engineer Officer – Class 1				
筆試	Written Examination	39	17	27	6
口試	Oral Examination	14	7	2	1
其他 ⁽¹⁾	Other Services ⁽¹⁾	42	42	35	35
二級輪機師	Marine Engineer Officer – Class 2				
筆試	Written Examination	52	27	27	8
口試	Oral Examination	16	8	15	4
其他 ⁽¹⁾	Other Services ⁽¹⁾	49	44	42	41
三級輪機師	Marine Engineer Officer – Class 3				
口試	Oral Examination	8	7	2	2
其他 ⁽¹⁾	Other Services ⁽¹⁾	121	116	93	89
電子技術高級船員	Electro-Technical Officer				
口試	Oral Examination	0	0	0	0
其他 ⁽¹⁾	Other Services ⁽¹⁾	0	0	0	0
小計	Sub-total	341	268	243	186
總計	Total	1 022	620	764	449

表 28 – 續
TABLE 28 – Cont'd

B. 內河航行合格證明書 River Trade Certificates of Competency		2016		2017	
		申請人數 Number of Applications	及格人數 Number of Successes	申請人數 Number of Applications	及格人數 Number of Successes
1. 甲板高級船員	Deck Officer				
一級甲板高級船員	Deck Officer Class 1				
筆試	Written Examination	4	0	8	2
口試	Oral Examination	18	1	18	4
其他 ⁽¹⁾	Other Services ⁽¹⁾	157	150	6	6
二級甲板高級船員	Deck Officer Class 2				
筆試	Written Examination	29	3	64	7
口試	Oral Examination	9	2	0	0
其他 ⁽¹⁾	Other Services ⁽¹⁾	47	47	6	6
三級甲板高級船員	Deck Officer Class 3				
筆試	Written Examination	72	30	112	35
口試	Oral Examination	0	0	0	0
訊號	Signal	33	12	34	8
其他 ⁽¹⁾	Other Services ⁽¹⁾	156	155	15	15
小計	Sub-total	525	400	263	83
2. 輪機師	Marine Engineer Officer				
一級輪機師	Marine Engineer Officer – Class 1				
筆試	Written Examination	0	0	0	0
口試	Oral Examination	0	0	0	0
其他 ⁽¹⁾	Other Services ⁽¹⁾	30	29	2	2
二級輪機師	Marine Engineer Officer – Class 2				
筆試	Written Examination	35	12	37	5
口試	Oral Examination	14	5	17	1
其他 ⁽¹⁾	Other Services ⁽¹⁾	98	97	6	6
三級輪機師	Marine Engineer Officer – Class 3				
口試	Oral Examination	5	2	13	9
其他 ⁽¹⁾	Other Services ⁽¹⁾	41	39	5	4
小計	Sub-total	223	184	80	27
總計	Total	748	584	343	110

表 28 – 續
TABLE 28 – Cont'd

C.1 本地合格證明書 Local Certificates of Competency		2016		2017	
		申請人數 Number of Applications	及格人數 Number of Successes	申請人數 Number of Applications	及格人數 Number of Successes
1. 船長	Coxswain				
一級船長	Coxswain Grade 1				
筆試	Written Examination	53	18	48	15
其他 ⁽¹⁾	Other Services ⁽¹⁾	164	164	183	177
二級船長	Coxswain Grade 2				
筆試	Written Examination	192	60	215	67
口試	Oral Examination	144	20	164	22
其他 ⁽¹⁾	Other Services ⁽¹⁾	496	484	587	578
三級船長	Coxswain Grade 3				
筆試	Written Examination	305	103	458	134
口試	Oral Examination	0	0	0	0
其他 ⁽¹⁾	Other Services ⁽¹⁾	679	670	812	800
小計	Sub-total	2 033	1 519	2 467	1 793
2. 輪機操作員	Engine Operator				
一級輪機操作員	Engine Operator Grade 1				
其他 ⁽¹⁾	Other Services ⁽¹⁾	278	278	371	369
二級輪機操作員	Engine Operator Grade 2				
筆試	Written Examination	71	37	93	32
其他 ⁽¹⁾	Other Services ⁽¹⁾	19	19	14	14
三級輪機操作員	Engine Operator Grade 3				
筆試	Written Examination	469	124	411	115
其他 ⁽¹⁾	Other Services ⁽¹⁾	335	331	399	398
小計	Sub-total	1 172	789	1 288	928
總計	Total	3 205	2 308	3 755	2 721

表 28 – 續
TABLE 28 – Cont'd

C.2 遊樂船隻操作人合格證明書 Pleasure Vessel Operator Certificate of Competency		2016		2017	
		申請人數 Number of Applications	及格人數 Number of Successes	申請人數 Number of Applications	及格人數 Number of Successes
遊樂船隻 一級操作人	Pleasure Vessel Operator Grade 1				
筆試	Written Examination	230	71	276	110
口試	Oral Examination	114	31	230	36
其他 ⁽¹⁾	Other Services ⁽¹⁾	540	533	595	589
遊樂船隻 二級操作人	Pleasure Vessel Operator Grade 2				
筆試	Written Examination	8 699	3 325	8 170	3 092
口試	Oral Examination	0	0	0	0
其他 ⁽¹⁾	Other Services ⁽¹⁾	718	710	773	768
總計	Total	10 301	4 670	10 044	4 595

D. 部門考試 Departmental Examinations		2016		2017	
		考試人數 Examined	及格人數 Passed	考試人數 Examined	及格人數 Passed
一級本地船長	Coxswain Grade 1	4	1	1	1
二級本地船長	Coxswain Grade 2	120	47	80	24
三級本地船長	Coxswain Grade 3	33	23	13	12
一級輪機操作員	Engine Operator Grade 1	0	0	0	0
二級輪機操作員	Engine Operator Grade 2	21	12	26	13
三級輪機操作員	Engine Operator Grade 3	67	29	44	28
總計	Total	245	112	164	78

表 28 – 續
TABLE 28 – Cont'd

E. 其他考試/評定 Other Examinations/Assessments		2016		2017	
		申請人數 Number of Applications	及格人數 Number of Successes	申請人數 Number of Applications	及格人數 Number of Successes
培訓合格證書	Certificate of Proficiency (CoP)				
甲板高級海員	Able Seafarer Deck	64	61	58	37
導航值班普通船員	Navigational Watch Rating	0	0	8	3
機房高級海員	Able Seafarer Engine	11	11	11	6
機房值班普通船員	Engine Room Watch Rating	0	0	9	5
電子技術普通船員	Electro-Technical Rating	0	0	0	0
其他	Others	437 ⁽²⁾	422 ⁽²⁾	1 114	1 015
類型級別證明書 (考試、重新生效及 夜航批准)	Type Rating Certificate (Examination, Revalidation and Night Service Approval)	480	455	489	442
香港執照	Hong Kong Licence	26 547	25 455	23 129	21 764
本地豁免	Local Exemption	13	13	11	11
總計	Total	27 552	26 417	24 829	23 283

F. 截至 2017 年 12 月 31 日為止的海員註冊人數 Seafarer's Registration as at 31.12.2017			
根據第 478 章註冊的海員 Seafarers Registered Under Cap. 478	第一部 Part I	第二部 Part II	總計 Total
		4 832	1 666

表 28 - 續
TABLE 28 - Cont'd

G. 2017 年所簽發的僱用登記簿數目 Employment Registration Books Issued, 2017		
續發簿	Subsequent Books	0
補發簿	Replacement Books	1
新海員簿	New Entrants Books	183
總計	Total	184

H. 2017 年海員就業統計數字 Seafarers Employment Statistics, 2017			
僱用海員 ⁽³⁾ 方式 Seafarers ⁽³⁾ Employed Through			
核准公司名冊 Permitted Company Roster	總名冊 General Roster	緊急僱用／重新僱用等 Emergency/ Re-employment, etc.	總計 Total
529	33	1 104	1 666

I. 船公司及職位統計數字 Companies and Posts Statistics	
截至 2017 年12月31日為止在商船海員管理處登記僱用本港註冊海員的船公司數目 Shipping companies listed with Mercantile Marine Office to employ Hong Kong registered seafarers as at 31.12.2017	23
2017 年按船公司所交周年報表而編製的本港海員就業職位 Posts filled by Hong Kong seafarers as compiled from annual returns submitted by shipping companies, 2017	1 420

表28 – 續
TABLE 28 – Cont'd

J. 2017年訂立和終結的香港註冊船舶船員協議條款 Crew Agreements of Hong Kong Registered Ships Opened and Closed, 2017				
	訂立的協議 Agreements Opened		終結的協議 Agreements Closed	
	在香港境內 In Hong Kong	在香港境外 Outside Hong Kong	在香港境內 In Hong Kong	在香港境外 Outside Hong Kong
船員協議條款數目 No. of agreements	61	1 161	66	1 248
總計 Total	1 222		1 314	

K. 香港註冊船舶僱用和解職的海員人次⁽⁴⁾ Number of Employment and Discharge of Seafarers⁽⁴⁾ by Hong Kong Registered Ships	2016	2017
僱用的海員人次 No. of employment of seafarers	58 080	73 320
解職的海員人次 No. of discharge of seafarers	70 500	78 840

註釋： (1) 包括有關證明書批註、豁免、重新生效等事宜的申請。
Notes: Including applications for endorsement, exemption and revalidation etc.

(2) 包括其他證明書及符合證明。
Including other Certificate and Statement of Compliance.

(3) 數字包括高級船員。
Figures include Officers.

(4) 數字包括在香港以外地方註冊的海員。
Figures include seafarers registered outside Hong Kong.

資料來源： (A) – (E) 海事處海員發證組
Data Sources: Seafarers' Certification Section, Marine Department

(F) – (K) 海事處船舶註冊及商船海員管理處
Shipping Registry and Mercantile Marine Office, Marine Department

表 29
TABLE 29

香港註冊船舶統計數字
Statistics on Ships Registered in Hong Kong

A. 2017 年船舶數目和噸位
Number of Ships and Tonnage, 2017

	2017 年 12 月 31 日船舶註冊概況 On register as at 31.12.2017
船舶數目 No. of Ships	2 545
淨噸位 ⁽¹⁾ (千噸) Net Tonnage ⁽¹⁾ ('000 tons)	62 276
總噸位 ⁽¹⁾ (千噸) Gross Tonnage ⁽¹⁾ ('000 tons)	113 841

B. 按總噸位分析於 2017 年年底在香港註冊的船舶數目
Ships Registered in Hong Kong Analysed by Gross Tonnage as at end 2017

總噸位 ⁽¹⁾ Gross Tonnage ⁽¹⁾	船舶數目 No. of Ships
< 500	144
500 - < 1 000	48
1 000 - < 2 000	41
2 000 - < 3 000	10
3 000 - < 4 000	17
4 000 - < 5 000	24
5 000 - < 10 000	261
10 000 - < 15 000	84
15 000 - < 20 000	185
20 000 - < 25 000	228
25 000 - < 30 000	213
30 000 - < 35 000	198
35 000 - < 40 000	145
40 000 - < 45 000	229
45 000 - < 50 000	45
50 000 - < 55 000	82
55 000 - < 60 000	17
60 000 - < 65 000	43
65 000 - < 85 000	20
85 000 - < 115 000	275
115 000 - < 145 000	68
145 000 - < 175 000	143
175 000 - < 200 000	12
≥ 200 000	13
總計 Total	2 545

表 29 – 續
TABLE 29 – Cont'd

C. 按船舶種類分析於 2017 年年底在香港註冊的船舶
Ship Registered in Hong Kong by Ship Type as at end 2017

船舶類型	Type of Ship	船舶數目 No. of Ships	總噸位 ⁽¹⁾ (千噸) Gross Tonnage ⁽¹⁾ ('000 tons)
貨船	Cargo Ship	1 904	89 492
散裝貨船	<i>Bulk Carrier</i>	1 044	45 140
集裝箱船	<i>Container Vessel</i>	506	29 241
一般貨船	<i>General Cargo Ship</i>	241	3 948
礦沙／散貨／ 油類混用船	<i>Ore/Bulk/Oil (OBO) Carrier</i>	80	10 225
其他貨船	<i>Other Cargo Ship</i>	33	939
液貨船	Tanker	476	24 269
油輪	<i>Oil Tanker</i>	228	17 667
化學品運載船	<i>Chemical Tanker</i>	178	3 358
液化氣體運載船	<i>Gas Carrier</i>	55	2 840
其他液貨船	<i>Other Tanker</i>	15	404
拖船	Tug	32	12
客船	Passenger Ship	67	62
高速客船	<i>High Speed Craft</i>	50	27
其他客船	<i>Other Passenger Ship</i>	17	35
遊艇	Yacht	66	7
總計	Total	2 545	113 841

註釋： (1) 淨噸位及總噸位以每單位 100 立方呎計算。

Note: Net and gross tonnages are in units of 100 cubic feet.

資料來源： 海事處船舶註冊處

Data Source: Shipping Registry, Marine Department

表 30
TABLE 30

政府船隊統計數字
Government Fleet Statistics

項目	Item	2016	2017
1. 開支預算總額 ⁽¹⁾ (百萬元)	Total expenditure estimate ⁽¹⁾ (\$M)	559.6	579.5
2. 政府船隊科實際員額總數(包括船員) ⁽²⁾	Total strength in Government Fleet Division (GFD) (including crew) ⁽²⁾	450	445
3. (i) 建成及交收的政府新船 (ii) 建造中的政府新船 (iii) 已完成的政府新船計劃 (iv) 正進行中的政府新船計劃	(i) Government new vessels built and delivered (ii) Government new vessels under construction (iii) Government new vessel projects completed (iv) Government new vessel projects in progress	18 34 6 12	15 206 6 20
4. 新船招標／報價	Tenders/Quotations called for new vessels	14	15
5. 新船合約	Contracts awarded for new vessels	6	11
6. 已完成的合約及購買規格書	Contracts and procurement specifications completed	20	26
7. (i) 政府船舶總數 ⁽²⁾ a. 大型機動船舶 b. 大型高速船 c. 其他雜類型船舶 (ii) 配備海事處人員的政府船舶 ⁽²⁾ (iii) 海事處可供調配船員的時數率 (%) (iv) 已處理報廢的政府船舶	(i) Total number of vessels ⁽²⁾ a. Major mechanised vessels b. High speed craft (large type) c. Other miscellaneous class vessels (ii) Government craft manned by the Marine Department (MD) ⁽²⁾ (iii) MD crew staff time available for deployment (%) (iv) Government craft disposed	848 94 13 741 43 87.0 13	850 94 13 743 43 87.5 22
8. (i) 大型機動船舶及大型高速船的可提供使用率 (%) (ii) 大型機動船舶及大型高速船的平均數目 (iii) 船舶維修後首次試航成功率 (%) (iv) 政府船隊維修保養服務使用者滿意率 (%)	(i) Availability of major mechanised vessels and high speed craft (large type) (%) (ii) Average number of major mechanised vessels and high speed craft (large type) (iii) Vessel sea trial successful rate in first attempt after repair maintenance service (%) (iv) User satisfaction level on Government fleet repair maintenance service (%)	86.1 107 92.4 99.1	87.1 107 97.2 98.6
9. 大型機動船舶及大型高速船 (包括他們的機動子艇) 保養費總額 (百萬元)	Total maintenance cost of major mechanised vessels and high speed craft (large type) (including their mechanised daughter boats) (\$M)	196.3	201.2
10. 大型機動船舶及大型高速船 (包括他們的機動子艇) 平均保養費 (百萬元)	Average maintenance cost of major mechanised vessels and high speed craft (large type) (including their mechanised daughter boats) (\$M)	1.8	1.9
11. (i) 船舶維修定期保養合約安排總數 a. 根據合約保養的船舶數目 b. 根據合約保養的主機數目 (ii) 採購機械零件的定期合約數目	(i) Total number of vessel maintenance term contract (TC) arrangements a. Number of vessels maintained under TC b. Number of main engines repaired under TC (ii) Number of TC for procurement of machinery spare parts	44 131 267 17	55 519 343 17
12. 配備海事處人員的政府船舶肇事個案 (i) 肇事政府船舶數目 (ii) 工傷意外傷亡數目 a. 船塢員工 b. 船員	Accidents involving Government craft manned by MD (i) Number of Government vessels involved (ii) Number of casualties in industrial accidents a. Dockyard staff b. Crew	5 2 6	2 0 4
13. 參加職業安全及健康 (職安健) 課程的政府船塢人員人數 (i) 職業安全健康局舉辦課程 (ii) 政府船隊科工業安全組舉辦的課程 (iii) 其他職安健課程	Number of attendees of Government Dockyard to Occupational Safety and Health (OSH) training courses (i) Organised by the OSH Council (ii) Organised by the Industrial Safety Section, GFD (iii) Other OSH courses	20 117 128	42 133 113

註釋： (1) 指財政年度內的數字 (由當年 4 月 1 日至下年 3 月 31 日)。

Notes: Figures refer to those in financial year (i.e. from 1 April of current year to 31 March of next year).

(2) 指該年年底的數字。

Figures refer to the position as at end of the year.

資料來源： 海事處政府船隊科

Data Source: Government Fleet Division, Marine Department

表 31
TABLE 31

政府船舶所屬部門及可用率情況 (截至 2017 年年底)
Departmental Ownership and Availabilities of Government Vessels (as at end 2017)

船舶類型 Vessel Type	所屬部門 Ownership														
	漁農 自然 護理署 AFCD	醫療 輔助隊 AMS	民眾 安全 服務隊 CAS	土木 工程 拓展署 CEDD	懲教署 CSD	香港 海關 C&ED	環境 保護署 EPD	消防處 FSD	衛生署 DH	香港 警務處 HKPF	入境 事務處 Imm D	康樂及 文化 事務署 LCSD	海事處 MD	水務署 WSD	總計 Total
機動子艇及泳灘艇 Mechanised Daughter Boats & Beach Craft	0	0	0	0	0	7	0	9	0	17	0	132	1	0	166
浮橋物／泳灘浮台及浮筏 Floating Bridge Structures/Beach Platforms & Rafts	0	0	0	0	0	0	0	0	0	0	0	406	0	0	406
機動及非機動充氣式橡皮艇 Mechanised and Non-mechanised Inflatable Boats	1	1	11	0	0	2	1	11	0	6	0	1	0	2	36
駁船 Lighters	0	0	0	0	0	0	0	1	0	6	0	0	21	0	28
小型機動船及小艇 Minor Mechanised Vessels & Dinghies	15	0	0	0	0	0	0	13	0	9	0	0	6	5	48
大型機動船舶 Major Mechanised Vessels	3	0	0	3	2	7	1	9	1	36	7	0	25	0	94
大型高速船 High Speed Craft (large type)	0	0	0	0	0	3	0	0	0	10	0	0	0	0	13
中型高速船 High Speed Craft (medium type)	7	0	0	0	0	2	0	2	0	43	0	0	5	0	59
總計 Total	26	1	11	3	2	21	2	45	1	127	7	539	58	7	850
大型機動船及大型高速船平均可提供使用率 ⁽¹⁾ Average Availability of Major Mechanised Vessels & High Speed Craft (large type) ⁽¹⁾	92.1%	-	-	95.8%	90.3%	87.2%	84.0%	85.7%	84.8%	86.6%	85.6%	-	87.2%	-	87.1%

註釋： (1) 數字不包括在政府船塢以外因維修而停機的時間。

Note: Figures exclude downtime due to repair conducted outside the Government Dockyard.

資料來源： 海事處政府船隊科

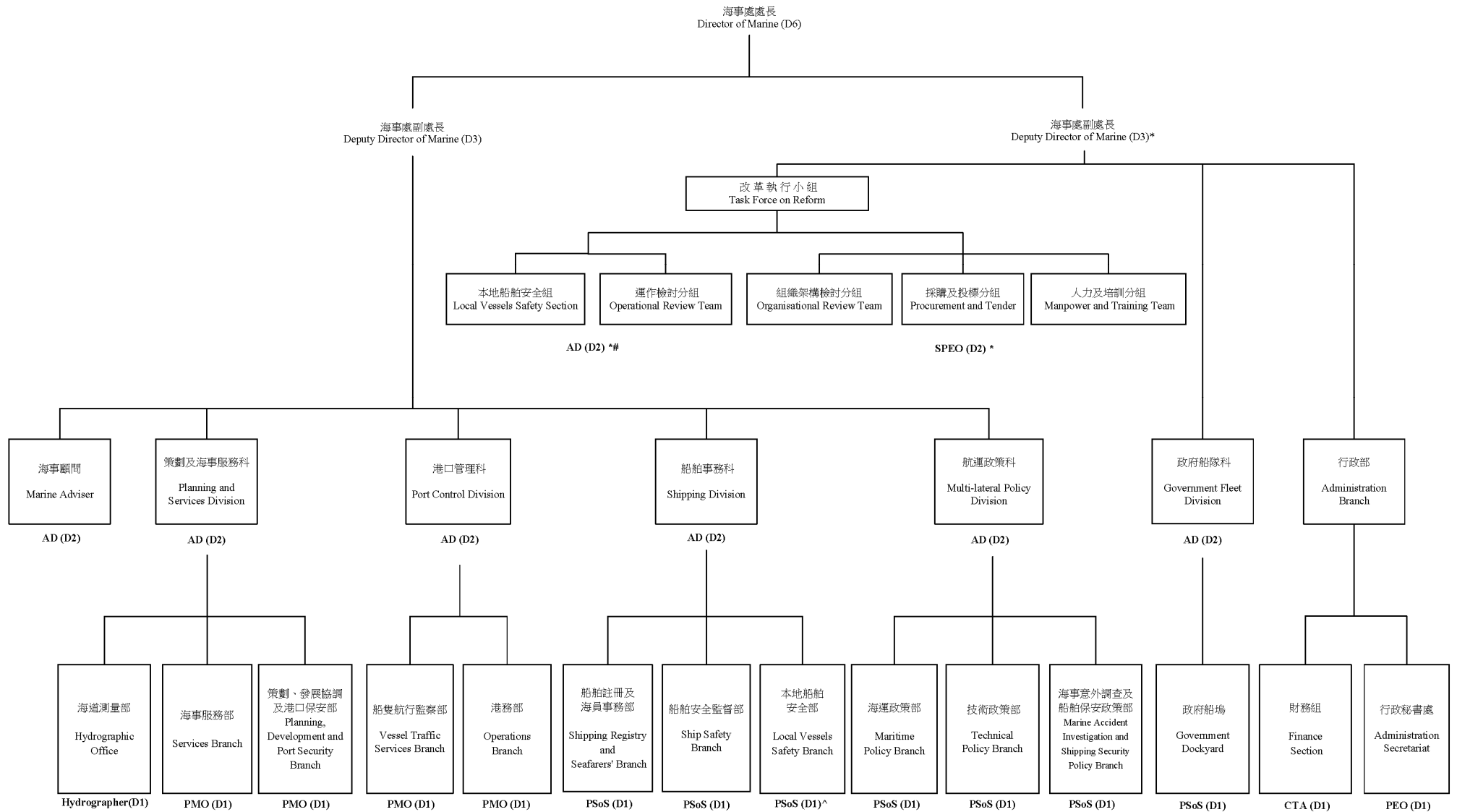
Data Source: Government Fleet Division, Marine Department

附 錄

Appendices

附錄 A
APPENDIX A

海事處組織架構圖 (截至 2017 年年底)
Organisation Chart of the Marine Department (as at end 2017)



* Supernumerary post 編外職位

Assistant Director (Special Duties) reports to Deputy Director on operation and technical matters of Local Vessels Safety Section. 助理處長 (特別職務) 負責向副處長匯報本地船舶安全組的運作和技術事宜。

^ General Manager/Local Vessels Safety Branch also oversees the operation of Local Vessels Safety Section and reports to Assistant Director (Special Duties) in this context. 本地船舶安全組總經理亦負責監督本地船舶安全組的運作，並向助理處長 (特別職務) 匯報這方面的工作。

圖例 : AD = 海事處助理處長 Assistant Director of Marine
Legend: PMO = 首席海事主任 Principal Marine Officer
PSoS = 首席驗船主任 Principal Surveyor of Ships
Hydrographer = 海道測量師 Hydrographer

SPEO = 高級首席行政主任 Senior Principal Executive Officer
PEO = 首席行政主任 Principal Executive Officer
CTA = 總庫務會計師 Chief Treasury Accountant
D6 = 首長薪級第六點 (如此類推) Directorate Level 6 (and so on)

附錄 B
APPENDIX B

海事處的編制和實際員額 (截至 2017 年年底)
Establishment and Strength of the Marine Department (as at end 2017)

		編制 Establishment	實際員額 Strength
首長級人員			
Directorate Officers			
海事處處長	Director of Marine (D6)	1	0
首長級甲級政務官	Administrative Officer Staff Grade A (D6)	0	1
海事處副處長	Deputy Director of Marine (D3)	1	1
首長級乙級政務官	Administrative Officer Staff Grade B (D3)	1♦	1
海事處助理處長	Assistant Director of Marine (D2)	6 + 1♦	5
高級首席行政主任	Senior Principal Executive Officer (D2)	1♦	0
首席驗船主任	Principal Surveyor of Ships (D1)	7 + 2♦	9
首席海事主任	Principal Marine Officer (D1)	4	4
海道測量師	Hydrographer (D1)	1	0
首席行政主任	Principal Executive Officer (D1)	1	1
總庫務會計師	Chief Treasury Accountant (D1)	1	1
部門職系			
Departmental Grade			
高級驗船主任	Senior Surveyor of Ships	18	13
驗船主任	Surveyor of Ships	33	24
高級海事主任	Senior Marine Officer	18 + 2♦	15
海事主任	Marine Officer	36	21
高級船舶安全主任	Senior Shipping Safety Officer	1	0
船舶安全主任	Shipping Safety Officer	7	8
海事監督	Marine Controller	15	10
助理海事監督	Assistant Marine Controller	51 + 1♦	49
輔航設備監督	Superintendent of Aids to Navigation	1 + 1♦	1
助理輔航設備監督	Assistant Superintendent of Aids to Navigation	2	2
總驗船督察	Chief Ship Inspector	2	2
高級驗船督察	Senior Ship Inspector	11	11
驗船督察	Ship Inspector	26	18
助理驗船督察	Assistant Ship Inspector	22	30
高級助理船務主任	Senior Assistant Shipping Master	27	23
一級海事督察	Marine Inspector I	102 + 2♦	102
二級海事督察	Marine Inspector II	129	115
小輪大偈	Launch Mechanic	1	1

附錄 B – 續
APPENDIX B – Cont'd

		編制 Establishment	實際員額 Strength
一般職系 General Grade			
高級政務主任	Senior Administrative Officer	1	0
政務主任	Administrative Officer	0	1
總行政主任	Chief Executive Officer	3	1
高級行政主任	Senior Executive Officer	3	4
一級行政主任	Executive Officer I	7	8
二級行政主任	Executive Officer II	11	12
高級庫務會計師	Senior Treasury Accountant	1	1
庫務會計師	Treasury Accountant	3 + 2 [◆]	5
高級會計主任	Senior Accounting Officer	1	1
一級會計主任	Accounting Officer I	1	1
二級會計主任	Accounting Officer II	3	3
總管理參議主任	Chief Management Services Officer	1	1
高級管理參議主任	Senior Management Services Officer	1	2
二級管理參議主任	Management Services Officer II	1	2
高級法定語文主任	Senior Official Languages Officer	1	1
一級法定語文主任	Official Languages Officer I	2	1
二級法定語文主任	Official Languages Officer II	2	3
高級系統經理	Senior Systems Manager	0	1
系統經理	Systems Manager	3	3
一級系統分析/ 程序編製主任	Analyst/Programmer I	6	3
二級系統分析/ 程序編製主任	Analyst/Programmer II	6	8
高級統計師	Senior Statistician	1	1
一級統計主任	Statistical Officer I	1	1
二級統計主任	Statistical Officer II	3	3

附錄 B – 續
APPENDIX B – Cont'd

		編制 Establishment	實際員額 Strength
一般職系 General Grade			
高級土地測量師	Senior Land Surveyor	2	2
土地測量師/ 助理土地測量師	Land Surveyor/ Assistant Land Surveyor	5	5
首席測量主任 (工程)	Principal Survey Officer (Engineering)	1	1
高級測量主任 (工程)	Senior Survey Officer (Engineering)	4	3
測量主任 (工程)/ 見習測量主任 (工程)	Survey Officer (Engineering)/ Survey Officer Trainee (Engineering)	11	11
總技術主任	Chief Technical Officer (Cartographic)	1	0
首席技術主任 (製圖)	Principal Technical Officer (Cartographic)	1	2
高級技術主任 (製圖)	Senior Technical Officer (Cartographic)	6	6
技術主任 (製圖)/ 見習技術主任 (製圖)	Technical Officer (Cartographic)/ Technical Officer Trainee (Cartographic)	9	9
高級電子工程師	Senior Electronics Engineer	1	1
電子工程師/ 助理電子工程師	Electronics Engineer/ Assistant Electronics Engineer	2	2
電子督察	Electronics Inspector	1	1
高級私人秘書	Senior Personal Secretary	1	1
一級私人秘書	Personal Secretary I	9	9
二級私人秘書	Personal Secretary II	16	14
打字員	Typist	2	1
機密檔案室助理	Confidential Assistant	1	1
高級文書主任	Senior Clerical Officer	6 + 1♦	6
文書主任	Clerical Officer	31	29
助理文書主任	Assistant Clerical Officer	80 + 2♦	82
文書助理	Clerical Assistant	120 + 1♦	117
辦公室助理員	Office Assistant	5	5

附錄 B – 續
APPENDIX B – Cont'd

		編制 Establishment	實際員額 Strength
一般職系 General Grade			
總物料供應主任	Chief Supplies Officer	1	1
高級物料供應主任	Senior Supplies Officer	1	1
物料供應主任	Supplies Officer	2	2
助理物料供應主任	Assistant Supplies Officer	1	1
高級物料供應員	Senior Supplies Supervisor	1	0
一級物料供應員	Supplies Supervisor I	2 + 1 [◆]	2
二級物料供應員	Supplies Supervisor II	11	13
助理物料供應員	Supplies Assistant	3	3
繕校員	Calligraphist	2	2
物料供應服務員	Supplies Attendant	2	2
助理空氣調節督察	Assistant Air-Conditioning Inspector	1	1
汽車司機	Motor Driver	4	4
共通職系 Common Grade			
總技術主任	Chief Technical Officer	2	2
高級電氣督察	Senior Electrical Inspector	2	2
電氣督察	Electrical Inspector	4	3
助理電氣督察	Assistant Electrical Inspector	2	1
高級機械督察	Senior Mechanical Inspector	7	5
機械督察	Mechanical Inspector	10	10
助理機械督察	Assistant Mechanical Inspector	1	1
小輪船員督導員	Launch Crew Supervisor	3 + 1 [◆]	3
高級小輪船長	Senior Launch Master	56 + 9 [◆]	60
小輪船長	Launch Master	46 + 3 [◆]	34
小輪助理員	Launch Assistant	209 + 1 [◆]	198

附錄 B – 續
APPENDIX B – Cont'd

		編制 Establishment	實際員額 Strength
共通職系 Common Grade			
一級監工	Works Supervisor I	12 + 2 [◆]	9
二級監工	Works Supervisor II	8	9
高級技工	Senior Artisan	38	33
技工	Artisan	68	45
丈量員	Chainman	4	2
二級工人	Workman II	37 + 1 [◆]	37
總計	Total	1 441 + 35[◆]	1 329

註釋: ◆ 編外職位
Note: Supernumerary post

附錄 C
APPENDIX C

2017 年海事處訓練組舉辦的課程
Training Courses Conducted by Training Section, Marine Department in 2017

課程名稱 Course Title	學期(天) Duration (days)	參加學員 ⁽¹⁾ Target Participants ⁽¹⁾	班級數目 Number of Classes	學員數目 Number of Participants
1. 全球海上遇險及安全系統 (通用操作員證書 - 縮短課程) Global Maritime Distress and Safety System (GMDSS) (General Operator's Certificate - Abridged Course)	11	OFCA, <i>MI I, MI II</i>	1	6
2. 海上救援協調中心全球海上遇險及安全系統課程 Global Maritime Distress and Safety System (GMDSS) in Maritime Rescue Co-ordination Centre (MRCC) Course	11	<i>MI I, MI II</i>	1	6
3. 海岸電台操作員搜救知識課程 Search and Rescue (SAR) Knowledge for Coast Station Operator	3	<i>MI I, MI II</i>	1	6
4. 搜救衛星任務控制中心操作員課程 Cospas-Sarsat Mission Control Centre Operator	3	<i>MI I, MI II</i>	1	6
5. 海上救援協調中心全球海上遇險及安全系統在職訓練 課程 Global Maritime Distress and Safety System (GMDSS) On-the-Job Training Course at Maritime Rescue Co-ordination Centre (MRCC)	30	<i>MI I, MI II</i>	1	5
6. 全球海上遇險及安全系統 (限用操作員證書課程) Global Maritime Distress and Safety System (GMDSS) (Restricted Operator's Certificate Course)	5	HKPF, <i>MI II</i>	2	12
7. 全球海上遇險及安全系統導師課程 Global Maritime Distress and Safety System (GMDSS) Instructor Course	1	<i>SMO</i>	1	1
8. 國際海空海上搜尋救助課程 International Aeronautical and Maritime Search and Rescue (IAMSAR) Course	5	<i>AMC, MO</i>	1	3
9. 新招聘助理海事監督導引訓練課程 Induction Training Programme for Newly Recruited AMC	4	<i>AMC</i>	1	16
10. 海事督察訓練課程 – 甲部 Marine Inspector Training Course – Part A	30	<i>MI II</i>	1	9
11. 海事督察訓練課程 – 乙部 Marine Inspector Training Course – Part B	50	<i>MI II</i>	1	10
12. 民安隊海上油污訓練課程 Oil Pollution Course for CAS	2	CAS	2	35
13. 康樂及文化事務署海上油污訓練課程 Oil Pollution Course for LCSD	1	LCSD	1	20
14. 領港員模擬船操縱課程 Pilotage Simulation Course	1	HKPA	1	1
15. 香港水域雷達操作員課程 Radar Operator Course for Hong Kong Waters	7	C&E, OFCA, HKPF, <i>LA, LM,</i> <i>MI II</i>	2	20
16. 船舶模擬器導師課程 Ship Simulator Instructor Course	2	C&E, FSD, HKPF	1	11

附錄 C – 續
APPENDIX C - Cont'd

課程名稱 Course Title	學期(天) Duration (days)	參加學員 ⁽¹⁾ Target Participants ⁽¹⁾	班級數目 Number of Classes	學員數目 Number of Participants
17. 船隻航行監察服務操作員訓練課程 (新入職助理海事監督) VTS Operator Basic Training Course (New AMC)	63	AMC	3	14
18. 船隻航行監察服務在職訓練課程 VTS On-the-Job Training Course	30	AMC	4	18
19. 船隻航行監察服務監督員訓練課程 VTS Supervisor Training Course	3	AMC	1	4
20. 教育講座 / 工作坊 (模擬船隻實習工作坊) Education Seminar / Workshop (Workshop on Ship Simulator Practice)	1	FSD	1	6
總計 Total			28	209

註釋： (1) 參加課程的機構或海事處職員職位詳列於下表：

Note: Organisations or posts in Marine Department participated in the training courses are listed below:

機構	Organisation	縮寫 Abbreviation
民眾安全服務隊	Civil Aid Service	CAS
香港海關	Customs and Excise Department	C&E
香港消防處	Fire Services Department	FSD
香港領港會	Hong Kong Pilots Association	HKPA
香港警務處	Hong Kong Police Force	HKPF
康樂及文化事務署	Leisure and Cultural Services Department	LCSD
香港通訊事務管理局	Office of the Communications Authority	OFCA

海事處職員職位	Post in Marine Department	縮寫 (以斜體表示) Abbreviation (showed in italics)
助理海事監督	Assistant Marine Controller	<i>AMC</i>
小輪助理員	Launch Assistant	<i>LA</i>
小輪船長	Launch Master	<i>LM</i>
一級海事督察	Marine Inspector I	<i>MI I</i>
二級海事督察	Marine Inspector II	<i>MI II</i>
海事主任	Marine Officer	<i>MO</i>
高級海事主任	Senior Marine Officer	<i>SMO</i>

附錄 D
APPENDIX D

2017 年海事處訪客
Visitors to the Marine Department, 2017

海事處於 2017 年接待了以下訪客：

During the year of 2017, the Marine Department hosted the following visitors:

編號 No.	訪問日期 Date of Visit	機構／代表 Organisation/Representative
1.	9.1.2017	機電工程署 Electrical and Mechanical Services Department
2.	10.1.2017	海之家有限公司 Sea Dynamics
3.	24.2.2017	香港運輸物流學會 Chartered Institute of Logistics and Transport
4.	30.3.2017	阿拉伯聯合酋長國救援中心 United Arab Emirates National Search and Rescue Center
5.	7.4.2017	職業訓練局高級文憑課程 - 機械工程學系 Vocational Training Council High Diploma - Engineering Department
6.	21.4.2017	「鼓掌、創你程」計劃 Career and Life Adventure Planning Programme for Youth (CLAP)
7.	24.4.2017	法國總領事 Consulate General of France
8.	24.4.2017	公務員薪俸及服務條件常務委員會 Standing Commission on Civil Service Salaries and Conditions of Service
9.	5.5.2017	美國加州斯托克頓港管理委員會 Port of Stockton in California, United States
10.	23.5.2017	福建自貿試驗區廈門片區管委會 Administration of Xiamen Area of China (Fujian) Pilot Free Trade Zone
11.	23.5.2017 to 25.5.2017	美國海岸警衛隊 United States Coast Guard
12.	25.5.2017 and 26.5.2017	深圳海事局 Shenzhen Maritime Safety Administration
13.	12.6.2017	政務司司長 HKSAR Government Chief Secretary
14.	27.6.2017	韓國京畿道政府和京畿平澤港灣公社 Gyeonggi Provincial Government and Gyeonggi Pyeongtaek Port Corporation, Korea
15.	11.7.2017	"海港青年商會" and "德雅中學" 中三、中五學生 Secondary School Form 3 – Form 5 Students
16.	12.7.2017	「友、導向」師友計劃 "Life Buddies" Mentoring Scheme
17.	18.7.2017	香港海關 Hong Kong Customs and Excise Department

附錄 D - 續
APPENDIX D - Cont'd

編號 No.	訪問日期 Date of Visit	機構／代表 Organisation/Representative
18.	24.7.2017 to 28.7.2017	上海海事局 (張璐珩小姐) Shanghai Maritime Safety Administration (Ms. ZHANG Luheng)
19.	25.7.2017	廣東海事局 Guangdong Maritime Safety Administration
20.	1.8.2017	英國駐香港總領事館 - 國際貿易部 Department for International Trade - British Consulate - General Hong Kong
21.	2.8.2017	香港理工大學機械工程學系 Department of Mechanical Engineering, The Hong Kong Polytechnic University
22.	15.8.2017	上海海事大學 Shanghai Maritime University
23.	21.8.2017 to 1.9.2017	智利港口國監督部 (港口國監督檢查員交流計劃) PSC officer of PSC Division (TMOU PSCO Exchange Programme)
24.	4.9.2017	國際海事組織秘書長 The Secretary General of the International Maritime Organization
25.	12.9.2017 and 22.11.2017	香港水警訓練學校 Marine Police Training School
26.	13.9.2017	中國杯賽事組委會 Organisation Committee of the China Cup
27.	20.9.2017	深圳市人民政府应急管理辦公室 Emergency Management Office of Shenzhen Municipal People's Government
28.	7.10.2017	海事專才推廣聯盟 Maritime Professional Promotion Federation
29.	13.10.2017 and 28.11.2017	香港海事博物館 Hong Kong Maritime Museum
30.	15.11.2017	明愛社區書院 The Caritas Institute of Community Education
31.	16.11.2017	中國海事局 The Maritime Safety Administration of the People's Republic of China
32.	17.11.2017	海運倫敦首席執行官 Chief Executive of Maritime London
33.	17.11.2017	香港海運週 2017 (運輸及房屋局) Hong Kong Maritime Industry Week 2017 (Transport and Housing Bureau)
34.	17.11.2017	倫敦海事服務協會 Maritime London
35.	18.11.2017	新加坡海事及港務管理局 Maritime and Port Authority of Singapore (MPA)
36.	22.11.2017	香港海運週 2017 (香港九龍塘基督教中華宣道會鄭榮之中學) Hong Kong Maritime Industry Week 2017 (Christian Alliance Cheng Wing Gee College)

附錄 D - 續
APPENDIX D - Cont'd

編號 No.	訪問日期 Date of Visit	機構／代表 Organisation/Representative
37.	28.11.2017	海事訓練學院 (海事科技高級文憑) Maritime Services Training Institute (Higher Diploma in Maritime Studies)
38.	4.12.2017	香港海員工會及集美大學 (廈門) Hong Kong Seamen's Union and Jimei University (Xiamen)
39.	4.12.2017	天主教新民書院 Newman Catholic College
40.	5.12.2017	海事訓練學院 Maritime Services Training Institute

附錄 E
APPENDIX E

2017 年刊憲的海事及航運法例
Maritime and Shipping Legislation Gazetted in 2017

2017 年在憲報刊登的海事及航運法例：
The maritime and shipping legislation published in the Gazette in 2017:

法例名稱 Title	參考編號 Reference No.
2017 年船舶及港口管制(修訂)規例 Shipping and Port Control (Amendment) Regulation 2017	2017 年第 82 號法律公告 L.N. 82 of 2017
2017 年船舶及港口管制規例(修訂附表 5)公告 Shipping and Port Control Regulations (Amendment of Fifth Schedule) Notice 2017	2017 年第 83 號法律公告 L.N. 83 of 2017
2017 年商船(本地船隻)(一般)(修訂)規例 Merchant Shipping (Local Vessels) (General) (Amendment) Regulation 2017	2017 年第 84 號法律公告 L.N. 84 of 2017
2017 年商船(安全)(救生設備)(修訂)規例 Merchant Shipping (Safety) (Life-Saving Appliances) (Amendment) Regulation 2017	2017 年第 85 號法律公告 L.N. 85 of 2017
商船(安全)(無線電通訊)規例 Merchant Shipping (Safety) (Radiocommunications) Regulation	2017 年第 86 號法律公告 L.N. 86 of 2017
〈商船(安全)(召集及訓練)規例〉(廢除)規例 Merchant Shipping (Safety) (Musters and Training) Regulations (Repeal) Regulation	2017 年第 87 號法律公告 L.N. 87 of 2017
〈商船(安全)(全球海上遇險和安全系統無線電裝設)規例〉(廢除)規例 Merchant Shipping (Safety) (GMDSS Radio Installations) Regulation (Repeal) Regulation	2017 年第 88 號法律公告 L.N. 88 of 2017
〈商船(安全)(無線電裝設)規例〉(廢除)規例 Merchant Shipping (Safety) (Radio Installations) Regulations (Repeal) Regulation	2017 年第 89 號法律公告 L.N. 89 of 2017
2017 年商船(海員)(正式航海日誌)(修訂)規例 Merchant Shipping (Seafarers) (Official Log Books) (Amendment) Regulation 2017	2017 年第 90 號法律公告 L.N. 90 of 2017
2017 年商船(安全)(貨船安全設備檢驗)(修訂)規例 Merchant Shipping (Safety) (Cargo Ship Safety Equipment Survey) (Amendment) Regulation 2017	2017 年第 91 號法律公告 L.N. 91 of 2017
2017 年商船(安全)(貨船構造及檢驗)(1984 年 9 月 1 日或之後建造的船舶)(修訂)規例 Merchant Shipping (Safety) (Cargo Ship Construction and Survey) (Ships Built On or After 1 September 1984) (Amendment) Regulation 2017	2017 年第 92 號法律公告 L.N. 92 of 2017
2017 年商船(安全)(客船構造及檢驗)(1984 年 9 月 1 日或之後建造的船舶)(修訂)規例 Merchant Shipping (Safety) (Passenger Ship Construction and Survey) (Ships Built On or After 1 September 1984) (Amendment) Regulation 2017	2017 年第 93 號法律公告 L.N. 93 of 2017

附錄 E - 續
APPENDIX E - Cont'd

法例名稱 Title	參考編號 Reference No.
2017 年商船(安全)(客船構造)(1984 年 9 月 1 日之前建造的船舶)(修訂)規例 Merchant Shipping (Safety) (Passenger Ship Construction) (Ships Built Before 1 September 1984) (Amendment) Regulation 2017	2017 年第 94 號法律公告 L.N. 94 of 2017
2017 年商船(安全)(無線電裝設檢驗)(修訂)規例 Merchant Shipping (Safety) (Radio Installations Survey) (Amendment) Regulation 2017	2017 年第 95 號法律公告 L.N. 95 of 2017
2017 年商船(限制船東責任)條例(修訂附表 2)令 Merchant Shipping (Limitation of Shipowners Liability) Ordinance (Amendment of Schedule 2) Order 2017	2017 年第 155 號法律公告 L.N. 155 of 2017
2017 年船舶及港口管制(修訂)(第 2 號)規例 Shipping and Port Control (Amendment) (No. 2) Regulation 2017	2017 年第 171 號法律公告 L.N. 171 of 2017
2017 年商船(本地船隻)(一般)(修訂)(第 2 號)規例 Merchant Shipping (Local Vessels) (General) (Amendment) (No. 2) Regulation 2017	2017 年第 178 號法律公告 L.N. 178 of 2017
2017 年商船(本地船隻)(一般)(修訂)(第 3 號)規例 Merchant Shipping (Local Vessels) (General) (Amendment) (No. 3) Regulation 2017	2017 年第 179 號法律公告 L.N. 179 of 2017
2017 年船舶及港口管制規例(修訂附表)公告 Shipping and Port Control Regulations (Amendment of Schedules) Notice 2017	2017 年第 180 號法律公告 L.N. 180 of 2017

附錄 F
APPENDIX F

2017 年輔航設備
Aids to Navigation, 2017

A. 使用中的輔航設備
Aids to Navigation in Use

輔航設備	Aids to Navigation	截至 2017 年 12 月 31 日 As at 31.12.2017
1. 燈浮標	Light Buoy	133
2. 燈航標	Light Beacon	428
3. 雷達應答標	Racon	1
4. 霧角	Fog Horn	7

B. 本年新設的輔航裝置
New Aids Established during the Year

1. 磨刀 A BMP-A	<p>於 2017 年 1 月 4 日，大小磨刀海岸公園設置 5 個燈浮標，以標示其範圍。</p> <p>On 4.1.2017, five light buoys were established to demarcate the area of the Brothers Marine Park.</p>
2. 磨刀 B BMP-B	
3. 磨刀 C BMP-C	
4. 磨刀 D BMP-D	
5. 磨刀 E BMP-E	
6. 磨刀核心區 1 BMP-CA1	<p>由 2017 年 8 月 29 日起，在大小磨刀海岸公園內設置 2 個標誌浮泡，以標示一個核心區，藉此保護中華白海豚的食糧和漁業資源。</p>
7. 磨刀核心區 2 BMP-CA2	<p>With effect from 29.8.2017, two marker buoys were established to demarcate a core area to provide protection to prey sources of Chinese White Dolphins and fisheries resources inside the Brothers Marine Park.</p>
8. 機場 1 Airport 1	<p>由 2017 年 12 月 29 日起，重新設置早前於 2012 年 3 月 5 日被移除的燈浮標“機場 1”。</p> <p>With effect from 29.12.2017, the light buoy “Airport 1”, which was withdrawn on 5.3.2012, was re-established.</p>

附錄 F – 續
APPENDIX F – Cont'd

C. 本年拆除的輔航裝置
Aids Discontinued during the Year

孤立危險泡 7A Isolated Danger buoy 7A	這個燈浮標於 2017 年 10 月 20 日永久終止服務。 The light buoy was permanently withdrawn from service on 20.10.2017.
-------------------------------------	--

D. 本年遭損毀的輔航裝置
Aids Damaged during the Year

下列燈浮標及燈航標遭損毀，航標燈熄滅。

The light buoys and light beacons listed below were damaged and unlit.

月份	Month	名稱	Name
1 月	January	南丫電力 1	P 1
3 月	March	北航 2	Northern 2
		沙龍 D	SLMP D
8 月	August	查氏文	Chesterman
		老虎吊排	Lo Fu Tiu Pai
		孖仔排	Ma Chai Pai
		大浪石	Wave Rock
9 月	September	長洲 3	Cheung Chau 3
		長洲石	Cheung Chau Rock
		高馬石	Comber Rock
		汾流	Fan Lau
		銀礦灣	Silver Mine Bay
		藍塘 2	TCS 2
10 月	October	石鼓洲	Shek Kwu Chau
		藍塘 1	TCS 1
11 月	November	機場 4	Airport 4
12 月	December	屯門	Tuen Mun

附錄 F – 續
APPENDIX F – Cont'd

E. 本年改進的輔航裝置
Aids Reprovisioned during the Year

1. 下列燈航標已換上全新現代化器材，用以提高光達距離。
The light beacons listed below were upgraded with modern equipment for better luminous range.

月份	Month	名稱	Name
1 月	January	花坪碼頭	Fa Ping Pier
2 月	February	中港 2	CFT 2
3 月	March	馬灣碼頭	Ma Wan Pier
5 月	May	佛堂門	Fat Tong Mun
6 月	June	鋼線灣	Kong Sin Wan
		澳仔	O Tsai
8 月	August	龍麟咀	Lung Lun Tsui
		北角新村碼頭	Pak Kok San Tsuen Pier
		橫瀾碼頭	Waglan Pier
12 月	December	大浪灣碼頭	Tai Long Wan Pier

2. 下列燈航標已由全新現代化器材取代，用以提高其可靠性。
The light beacons listed below were replaced with modern equipment for higher reliability.

月份	Month	名稱	Name
1 月	January	A78	A78
2 月	February	周公島	Sunshine Island
4 月	April	東博寮 3	LCS3
		羊洲	Yeung Chau
5 月	May	南丫排西南	Lamma Patch SW
6 月	June	斬竹灣	Tsam Chuk Wan
7 月	July	長洲 D	Cheung Chau D
		繫泊浮泡 B3	Mooring Buoy B3
8 月	August	查氏文	Chesterman
		老虎吊排	Lo Fu Tiu Pai
		銀洲	Ngan Chau
		孖仔排	Ma Chai Pai
		大浪石	Wave Rock

附錄 F – 續
APPENDIX F – Cont'd

E. 本年改進的輔航裝置 (續)

Aids Reprovisioned during the Year (Cont'd)

2. 下列燈航標已由全新現代化器材取代，用以提高其可靠性。(續)

The light beacons listed below were replaced with modern equipment for higher reliability. (Cont'd)

月份	Month	名稱	Name
9 月	September	長洲 3	Cheung Chau 3
		長洲石	Cheung Chau Rock
		汾流	Fan Lau
		銀礦灣	Silver Mine Bay
		藍塘 2	TCS2
		橫瀾碼頭	Waglan Pier
10 月	October	西貢新公眾碼頭	Sai Kung New Public Pier
		大澳 1	Tai O 1
12 月	December	香港仔西	Aberdeen West
		高馬石	Comber Rock
		東涌橋 3	Tung Chung Bridge 3
		東涌橋 5	Tung Chung Bridge 5

3. 下列燈航標已更換太陽能電池，用以提高航標的可靠性。

The solar batteries of the light beacons listed below were renewed in order to increase reliability.

月份	Month	名稱	Name
1 月	January	香港南 1	Aberdeen South 1
		中港 2	CFT 2
		長洲 C	Cheung Chau C
		花坪碼頭	Fa Ping Pier
		九龍灣 4	Kowloon Bay 4
		南丫電力 2	P 2
		醉酒灣	Rambler Channel
		土瓜灣 3	To Kwa Wan 3

附錄 F – 續
APPENDIX F – Cont'd

E. 本年改進的輔航裝置 (續)

Aids Reprovisioned during the Year (Cont'd)

3. 下列燈航標已更換太陽能電池，用以提高航標的可靠性。(續)

The solar batteries of the light beacons listed below were renewed in order to increase reliability. (Cont'd)

月份	Month	名稱	Name
2月	February	鶴咀	Cape D'Aguilar
		長青橋北綠	Cheung Tsing Bridge North Green
		青洲	Green Island
		高流灣碼頭	Ko Lau Wan Pier
		稔樹灣碼頭	Nim Shue Wan Pier
		三家村 1	Sam Ka Tsuen 1
		周公島	Sunshine Island
		大浪灣碼頭	Tai Long Wan Pier
		南堂尾隨	Tathong Point
		東心淇碼頭	Tung Sam Kei Pier
3月	March	長洲碼頭	Cheung Chau Pier
		青山 2	CP 2
		紅磡	Hung Hom
		滘西碼頭	Kau Sai Pier
		馬灣碼頭	Ma Wan Pier
		坪洲碼頭	Peng Chau Pier
		大尾篤北碼頭	Tai Mei Tuk North Pier
		大尾篤南碼頭	Tai Mei Tuk South Pier
		大澳碼頭	Tai O Pier
		大埔滘碼頭	Tai Po Kau Pier
		汀九橋墩 1	Ting Kau Bridge Pier 1
青馬橋墩 4	Tsing Ma Bridge Pier 4		
4月	April	長洲 1	Cheung Chau 1
		東博寮 3	LCS3
		北交椅洲	North Kau Yi Chau
		北角	Pak Kok
		醉酒灣 1	Rambler Channel 1
		筲箕灣 E	Shau Kei Wan E

附錄 F – 續
APPENDIX F – Cont'd

E. 本年改進的輔航裝置 (續)

Aids Reprovisioned during the Year (Cont'd)

3. 下列燈航標已更換太陽能電池，用以提高航標的可靠性。(續)

The solar batteries of the light beacons listed below were renewed in order to increase reliability. (Cont'd)

月份	Month	名稱	Name
5月	May	機場 3	Airport 3
		鶴咀 A	CD-A
		柴灣 C	Chai Wan C
		基準石	Datum Rock
		九龍灣 1	Kowloon Bay 1
		澳仔排	O Tsai Pai
		黃竹角	Wong Chuk Kok
		油麻地 1	Yau Ma Tei 1
6月	June	馬料水碼頭	Ma Liu Shui Pier
		澳仔	O Tsai
7月	July	長洲 D	Cheung Chau D
		九龍灣 2	Kowloon Bay 2
		蒲荅碼頭	Po Toi Pier
		西貢新公眾碼頭	Sai Kung New Public Pier
8月	August	下棚	Ha Pang
		北角新村碼頭	Pak Kok San Tsuen Pier
		草灣碼頭	Tso Wan Pier
9月	September	香港仔南 2	Aberdeen South 2
		長洲 3	Cheung Chau 3
		長洲 4	Cheung Chau 4
		高馬石	Comber Rock
		青山 7	CP 7
		汾流	Fan Lau
		馬頭角公眾碼頭西南	Ma Tau Kok Public Pier Southern West
		南丫電力 4	P 4
		銀礦灣	Silver Mine Bay
		藍塘 2	TCS 2

附錄 F – 續
APPENDIX F – Cont'd

E. 本年改進的輔航裝置 (續)

Aids Requisitioned during the Year (Cont'd)

3. 下列燈航標已更換太陽能電池，用以提高航標的可靠性。(續)

The solar batteries of the light beacons listed below were renewed in order to increase reliability. (Cont'd)

月份	Month	名稱	Name
10 月	October	北長洲石	Adamasta Rock
		長洲西灣碼頭	Cheung Chau Sai Wan Pier
		流浮山	Lau Fau Shan
		龍珠島	Pearl Island
		半山石	Pun Shan Shek
		沙洲碼頭	Sha Chau Pier
		筲箕灣 2	Shau Kei Wan 2
		石鼓洲	Shek Kwu Chau
		大鴉洲	Tai A Chau
		燈籠洲	Tang Lung Chau
		南堂尾	Tathong Point
		藍塘 1	TCS1
		青馬橋躉 5	Tsing Ma Bridge 5
氣象 11	Weather 11		
11 月	November	中港 3	C F T 3
		喜靈洲 8	Hei Ling Chau 8
		企嶺下海碼頭	Kei Ling Ha Hoi Pier
		北石鼓洲	North Shek Kwu Chau
		蒲苔	Po Toi
		西貢 1	Sai Kung 1
		西貢 2	Sai Kung 2
大浪排	Tai Long Pai		

附錄 F – 續
APPENDIX F – Cont'd

E. 本年改進的輔航裝置 (續)

Aids Reprovisioned during the Year (Cont'd)

3. 下列燈航標已更換太陽能電池，用以提高航標的可靠性。(續)

The solar batteries of the light beacons listed below were renewed in order to increase reliability. (Cont'd)

月份	Month	名稱	Name
12月	December	汾流角	Fan Lau Kok
		黃金海岸 2	Gold Coast 2
		黃金海岸 3	Gold Coast 3
		黃金海岸 4	Gold Coast 4
		喜靈洲 3	Hei Ling Chau 3
		喜靈洲 7	Hei Ling Chau 7
		北角消防局西碼頭	North Point FSD West Pier
		索罟灣新碼頭	Sok Kwu Wan New Pier
		索罟灣碼頭	Sok Kwu Wan Pier
		將軍澳 1	Tseung Kwan O 1
		東涌橋 3	Tung Chung Bridge 3
		東涌橋 5	Tung Chung Bridge 5

4. 下列燈航標的太陽能發電板數目已增加／更換，用以提高航標的可靠性。

The numbers of solar panel of the light beacons listed below were increased/replaced to enhance reliability.

月份	Month	名稱	Name
2月	February	青洲	Green Island
3月	March	紅磡	Hung Hom
		馬灣碼頭	Ma Wan Pier
		汀九橋墩 1	Ting Kau Bridge Pier 1
5月	May	鶴咀 A	CD-A
8月	August	大浪石	Wave Rock
9月	September	長洲 3	Cheung Chau 3
		長洲 4	Cheung Chau 4
		長洲石	Cheung Chau Rock
		高馬石	Comber Rock
		銀礦灣	Silver Mine Bay
		藍塘 2	TCS 2
10月	October	石鼓洲	Shek Kwu Chau
		藍塘 1	TCS1
12月	December	將軍澳 1	Tseung Kwan O 1

附錄 F – 續
APPENDIX F – Cont'd

F. 輔航燈與輔航設備工場員工比例

Ratio of Aids to Staff of Aids to Navigation Unit Workshop

年份 Year	輔航燈 Aids		輔航設備工場員工 ⁽¹⁾ Staff of Aids to Navigation Unit Workshop ⁽¹⁾		比例 Ratio (c) = (a)/(b)
	數目 Number (a)	變動百分率 Percentage Change	數目 Number (b)	變動百分率 Percentage Change	
1998	432	+9.4%	29	-9.4%	14.9
1999	463	+7.2%	27	-6.9%	17.1
2000	468	+1.1%	27	0%	17.3
2001	482	+3.0%	25	-7.4%	19.3
2002	483	+0.2%	27	+8.0%	17.9
2003	497	+2.9%	27	0%	18.4
2004	509	+2.4%	27	0%	18.9
2005	518	+1.8%	25	-7.4%	20.7
2006	529	+2.1%	23	-8.0%	23.0
2007	533	+0.8%	23	0%	23.2
2008	536	+0.6%	24	+4.3%	22.3
2009	540	+0.7%	23	-4.2%	23.5
2010	543	+0.6%	24	+4.3%	22.6
2011	541	-0.4%	23	-4.2%	23.5
2012	539	-0.4%	22	-4.3%	24.5
2013	542	+0.6%	20	-9.1%	27.1
2014	546	+0.7%	20	0%	27.3
2015	544	-0.4%	19	-5.0%	28.6
2016	554	+1.8 %	19	0%	29.2
2017	561	+1.3 %	21	10.5%	26.7

註釋： (1) 不包括負責在香港水域範圍內看管繫船設備／檢修浮泡的 5 位員工。

Note: Excluding five staff who are responsible for looking after the mooring facilities/overhaul of buoys within Hong Kong waters.