

香港港口統計年報

2015

Port of Hong Kong
Statistical Tables



中華人民共和國香港特別行政區海事處
Marine Department
Hong Kong Special Administrative Region
People's Republic of China

香 港 港 口
PORT OF HONG KONG
統 計 年 報
STATISTICAL TABLES
2015

有關本刊物的查詢，請聯絡：

海事處 策劃、發展協調及港口保安部 統計組

地址：香港中環統一碼頭道 38 號海港政府大樓 23 樓 2307 室

電話：(852) 2852 3660 圖文傳真：(852) 2542 4638

電郵：st-sec@mardep.gov.hk

Enquiries about this publication can be directed to:

Statistics Section

Planning, Development & Port Security Branch

Marine Department

Address: Room 2307, 23/F, Harbour Building,

38 Pier Road, Central, Hong Kong.

Tel.: (852) 2852 3660 Fax: (852) 2542 4638

E-mail: st-sec@mardep.gov.hk

海事處網頁

Home Page of the Marine Department

<http://www.mardep.gov.hk/>

同心協力，促進卓越海事服務

We are One in Promoting Excellence in Marine Services

如欲進入統計表／附錄，請按下有關的藍色項目
 To view the statistical tables/appendices, please click
 the item in blue

目錄 CONTENTS

	頁數 Page No.
註釋 EXPLANATORY NOTES	iv - vii
摘要 SUMMARY	viii
第一部 - 港口活動 PART I Port Activities	
<i>抵港／離港的船次</i> <i>Vessel Arrivals/Departures</i>	
表 1 2015 年 按主要停泊地點分析抵港遠洋輪船的船次 TABLE 1 Ocean Vessel Arrivals by Main Berthing Location, 2015	1
表 2 2015 年 按主要停泊地點分析離港遠洋輪船的船次 TABLE 2 Ocean Vessel Departures by Main Berthing Location, 2015	1
表 3 2015 年 按船舶類型分析抵港船舶的船次 TABLE 3 Vessel Arrivals by Ship Type, 2015	2
表 4 2015 年 按船旗分析抵港船舶的船次 TABLE 4 Vessel Arrivals by Flag, 2015	3 - 4
表 5 2015 年 按船旗分析曾停靠香港的船舶數目和淨註冊噸位 TABLE 5 Number and NRT of Vessels Calling Hong Kong by Flag, 2015	5 - 6
表 6 2015 年 按船舶類型分析離港船舶的平均在港停留時間 TABLE 6 Average Time in Port for Vessels Departing Hong Kong by Ship Type, 2015	7
表 7 2015 年 在貨櫃碼頭處理貨櫃的遠洋輪船統計數字 TABLE 7 Statistics on Ocean Vessels with Containers Handled in Container Terminals, 2015	8
表 8 2015 年 按夏季吃水分析抵港遠洋輪船的船次 TABLE 8 Ocean Vessel Arrivals by Summer Draft, 2015	9
表 9 2015 年 按船舶總長度分析抵港遠洋輪船的船次 TABLE 9 Ocean Vessel Arrivals by Vessel Length Overall, 2015	9
表 10 2015 年 按主要來港原因分析抵港遠洋輪船的船次 TABLE 10 Ocean Vessel Arrivals by Main Reason of Call, 2015	10
表 11 2015 年 按停泊地點及有否目的地分析郵輪抵港船次 TABLE 11 Cruise Arrivals by Berthing Location by Whether the Trip with Destination, 2015	11
表 12 2015 年 跨境客運碼頭的抵港及離港航次統計數字 TABLE 12 Statistics on Vessel Arrivals and Departures at Cross-boundary Ferry Terminals, 2015	12
表 13 2015 年 按船舶類型分析香港過境船舶的船次 TABLE 13 Number of Vessel Trips Transit Hong Kong by Ship Type, 2015	13

客運量

Passenger Throughput

	<p>表 14 2015 年 按跨境客運碼頭分析客運量</p> <p>TABLE 14 Passenger Throughput by Cross-boundary Ferry Terminal, 2015</p>	14
	<p>表 15 2015 年 按航線分析抵港及離港乘客人次</p> <p>TABLE 15 Passenger Arrivals and Departures by Route, 2015</p>	15 - 16

貨櫃／貨物吞吐量

Container/Cargo Throughput

	<p>表 16 2015 年 按主要貨物裝卸地點分析貨櫃吞吐量</p> <p>TABLE 16 Container Throughput by Main Cargo Handling Location, 2015</p>	17
	<p>表 17 2015 年 按貨櫃碼頭以外的主要貨物裝卸地點分析裝卸的貨櫃</p> <p>TABLE 17 Containers Discharged/Loaded at Main Cargo Handling Locations Other than Container Terminals, 2015</p>	18
	<p>表 18 2015 年 按貨物種類及運輸方式劃分的裝卸港口貨物</p> <p>TABLE 18 Port Cargo Discharged/Loaded by Cargo Type and Mode of Transport, 2015</p>	19

第二部 - 港口服務及管理
PART II Port Services and Control

	<p>表 19 海港繫泊浮泡統計數字</p> <p>TABLE 19 Harbour Mooring Buoys Statistics</p>	20
	<p>表 20 2015 年 按分布地點分析香港私人繫泊設備數目</p> <p>TABLE 20 Number of Private Moorings Laid in Hong Kong by Location, 2015</p>	21 - 22
	<p>表 21 碇泊處一覽 (截至 2015 年年底)</p> <p>TABLE 21 List of Anchorages (as at end 2015)</p>	23 - 24
	<p>表 22 避風塘一覽 (截至 2015 年年底)</p> <p>TABLE 22 List of Typhoon Shelters (as at end 2015)</p>	25
	<p>表 23 公眾貨物裝卸區一覽 (截至 2015 年年底)</p> <p>TABLE 23 List of Public Cargo Working Areas (as at end 2015)</p>	26
	<p>表 24 垃圾收集、油污和檢控個案統計數字</p> <p>TABLE 24 Refuse Collection, Oil Pollution and Prosecution Statistics</p>	27
	<p>表 25 按噸位等級分析香港持牌船隻 (截至 2015 年年底)</p> <p>TABLE 25 Hong Kong Licensed Vessels by Tonnage Classification (as at end 2015)</p>	28 - 29

	頁數 Page No.
第三部 - 船舶服務 PART III Shipping Services	
表 26 船舶安全監督統計數字 TABLE 26 Ship Safety Statistics	30 - 32
表 27 本地船隻安全／海事工業安全／海事意外統計數字 TABLE 27 Local Vessels Safety/Marine Industrial Safety/Marine Accidents Statistics	33 - 38
表 28 海員發證、註冊和僱用統計數字 TABLE 28 Seafarers' Certification, Registration and Employment Statistics	39 - 45
表 29 香港註冊船舶統計數字 TABLE 29 Statistics on Ships Registered in Hong Kong	46 - 47
表 30 政府船隊統計數字 TABLE 30 Government Fleet Statistics	48
表 31 政府船舶所屬部門及可用率情況 (截至 2015 年年底) TABLE 31 Departmental Ownership and Availabilities of Government Vessels (as at end 2015)	49
第四部 - 附錄 PART IV Appendices	
附錄 A 海事處組織架構圖 (截至 2015 年年底) APPENDIX A Organisation Chart of the Marine Department (as at end 2015)	A1
附錄 B 海事處的編制和實際員額 (截至 2015 年年底) APPENDIX B Establishment and Strength of the Marine Department (as at end 2015)	A2 – A6
附錄 C 2015 年 海事處訓練組舉辦的課程 APPENDIX C Training Courses Conducted by Training Section, Marine Department in 2015	A7 – A8
附錄 D 2015 年 海事處訪客 APPENDIX D Visitors of the Marine Department, 2015	A9 – A10
附錄 E 2015 年 新訂海事法例 APPENDIX E New Maritime Legislations, 2015	A11
附錄 F 2015 年 輔航設備 APPENDIX F Aids to Navigation, 2015	A12 – A18

1. 簡介

香港港口統計年報是香港海事處編製的港口及海事統計資料一覽表。這本年報輯錄以下統計數字和資料：

- 抵港／離港的船次
- 客運量
- 貨櫃／貨物吞吐量
- 港口服務及管理
- 船舶服務
- 海事處組織架構圖
- 海事處的編制和實際員額
- 海事處舉辦的課程
- 海事處訪客
- 新訂海事法例
- 輔航設備

2. 資料來源

船舶進出口統計數字

船舶進出口統計數字乃根據船公司或代理人向海事處申報船舶抵達／離開港口的資料時所遞交的申報表 (MO 618 及 MO 618A) 編製而成。(摘要、表一至十)

貨櫃統計數字

在貨櫃碼頭裝運的貨櫃統計數字，主要由碼頭經營者提供。不在貨櫃碼頭裝運的遠洋輪船「空」貨櫃統計數字，由海事處根據申報表 MO 618 及 MO 618A 編製。所有其他詳細的貨櫃統計數字，皆由政府統計處根據貨物艙單中所列的託運貨物抽取樣本編製而成。(摘要、表十六至十七)

貨物統計數字

貨運統計資料是由政府統計處根據貨物艙單中所列的託運貨物抽取樣本編製而成。(表十八)

停泊／貨物裝卸地點

有關遠洋輪船的主要貨物裝卸區和主要停泊地點的資料，均取自海事處船隻航行監察服務資訊系統所保存的船舶活動報告。(表一至二、表七、表十六至十七)

1. Introduction

The *Port of Hong Kong Statistical Tables* is a collection of Hong Kong Port and Maritime statistical information compiled by the Marine Department. This publication brings together the following statistics and information:

- Vessel Arrivals/Departures
- Passenger Throughput
- Container/Cargo Throughput
- Port Services and Control
- Shipping Services
- Organisation Chart of the Marine Department
- Establishment and Strength of the Marine Department
- Training Courses Conducted by the Marine Department
- Visitors to the Marine Department
- New Maritime Legislations
- Aids to Navigation

2. Data Sources

Vessel Statistics

Vessel statistics are based on the declaration forms (MO 618 & MO 618A) submitted to the Marine Department by shipping companies/agents for declaring arrivals/departures of vessels under their charge. (Summary Table, Tables 1 – 10)

Container Statistics

Statistics on container throughput handled at Container Terminals are mainly obtained from the terminal operators. Statistics on empty containers (ocean) handled at locations other than Container Terminals are compiled by the Marine Department based on the declaration forms of MO 618 and MO 618A. As for all the other detailed container throughput statistics, they are compiled by the Census and Statistics Department based on a sample of consignments listed in the cargo manifests. (Summary Table, Tables 16 – 17)

Cargo Statistics

Cargo statistics are compiled by the Census and Statistics Department based on a sample of consignments listed in the cargo manifests. (Table 18)

Berthing/Cargo Handling Location

Information on the main cargo handling location and main berthing location in respect of ocean vessels are extracted from the trip activity report kept in the Marine Department's Vessel Traffic Services Information System. (Tables 1 – 2, 7, 16 – 17)

3. 用語及分類

容量

在本報告中，船舶的容量是以淨註冊噸位來表示。計算單位為淨註冊噸。淨註冊噸位是由一艘船的船殼內的容量(以立方呎計)，加上在甲板上用以裝載貨物、貯藏品及乘客的空間，再減去船長、高級船員、船員所住的地方、燃料、導航及推進器所佔用的地方。每一淨註冊噸相等於 100 立方呎的容量。

貨物裝卸地點

在本報告中，貨物裝卸地點的分類是「貨櫃碼頭」、「泊位和倉庫碼頭(包括公眾貨物裝卸區)」、「碇泊處」和「浮泡」。

貨櫃吞吐量

這是指以標準貨櫃單位計算作為搬運貨物之用的貨櫃數目。一個標準貨櫃單位等同一個二十呎貨櫃的容量。

船旗

這是指船舶的國籍，表明其正式註冊的地方。香港在一九九二年正式開始船舶註冊制度。一九九七年七月一日起，香港特別行政區經中央人民政府授權繼續進行船舶註冊，並根據香港特別行政區的法律以「中國香港」的名義頒發有關證件。

內河航限

內河航限是指香港鄰近水域，一般指香港與珠江、大鵬灣及澳門，及其他在廣東和廣西與香港鄰近水域相連的內陸水域。內河航限的精確定義是指以下範圍內的水域：

- 東至東經 114°30'；
- 南至北緯 22°09'；及
- 西至東經 113°31'。

船舶類型

這是指船舶的特定用途，分為十八類：運車船、化學品運載船、普通貨船、其他貨船、郵船／渡輪、散裝乾貨船、漁船／魚類加工船、全槽格式貨櫃船、液化氣體運載船、駁船／躉船／貨艇、油輪、礦沙／散貨／油類混用船、其他液體運載船、遊樂船、滾裝卸式船、半貨櫃船、拖船及其他。

3. Terms and Classifications

Capacity

In this report, the capacity of a vessel is expressed in terms of net registered tonnage (NRT). The unit of measurement is net registered ton. NRT is, broadly, the capacity of a ship in cubic feet of the space within the hull, and of the enclosed space above the deck available for cargo, stores and passengers but excluding space used for the accommodation of the master, officers, crew, fuel, navigation and propelling machinery. One net registered ton is equivalent to 100 cubic feet of capacity.

Cargo Handling Location

The types of cargo handling location shown in this report are “container terminals”, “berths and wharves (including public cargo working areas)”, “anchorage” and “buoys”.

Container Throughput

This refers to the number of containers for moving the cargo in TEU terms. A TEU stands for a twenty-foot equivalent unit.

Flag

This is the nationality of the vessel, indicating where she is officially registered. In Hong Kong, the official vessel registration system was set up in 1992. As from 1.7.1997, the Hong Kong Special Administrative Region is authorised by the Central People’s Government to continue to maintain a shipping register and issue related certificates under its legislation, using the name ‘Hong Kong, China’.

River Trade Limits

River trade limits mean the waters in the vicinity of Hong Kong, which broadly include the Pearl River, Mirs Bay and Macao, and other inland waters in Guangdong and Guangxi which are accessible from waters in the vicinity of Hong Kong. The precise definition of river trade limits refers to waters within the following boundaries:

- to the East, meridian 114°30' East;
- to the South, parallel 22°09' North; and
- to the West, meridian 113°31' East.

Ship Type

This refers to the known specific function of the ship. Eighteen types of ship are distinguished: car carrier, chemical carrier/tanker, conventional cargo vessel, other cargo vessel, cruise/ferry, dry bulk carrier, fishing/fish processing vessel, fully cellular container vessel, gas carrier/tanker, lighter/barge/cargo junk, oil tanker, ore/bulk/oil carrier, other fluid carrier, pleasure vessel, roll on/roll off, semi-container vessel, tug and others.

4. 資料定義

遠洋輪船和內河船隻

遠洋輪船是指越過內河航限行駛的船隻，而內河船隻則指僅在內河航限內行駛的船隻。內河航限的定義在《船舶及港口管制條例》(第 313 章)訂明。(摘要、表一至十、表十六至十八)

停泊／貨物裝卸地點

船舶在進入香港水域後可能停泊超過一個停泊地點。若船舶來港的主要原因是裝卸貨物，則主要的貨物裝卸地點和主要的停泊地點是指最為昂貴的地點，當中以貨櫃碼頭居首位，隨後是泊位和倉庫碼頭(包括公眾貨物裝卸區)、碇泊處和浮泡。若船舶來港的主要原因不是裝卸貨物，主要停泊地點為停留時間最長的地點。(表一至二、表七、表十六至十七)

內河客船

內河客船的抵港次數是指船隻停泊於港澳碼頭、中國客運碼頭、屯門客運碼頭和海天客運碼頭的次數。屯門客運碼頭於二零一二年七月一日停止運作。(摘要、表三至五)

5. 資料局限

遠洋客船數字包括在內河航限以外水域行駛的遊樂船。但是，由於有些船主／代理人沒有申報這些船舶的淨註冊噸位資料給海事處，故遠洋客船的淨註冊噸位數字可能輕微低於實際的數字。(摘要、表一至五)

由於不能準確地統計本地持牌遊樂船和漁船來往香港及內河航限內的船次，故這兩類船隻沒有包括在內河船隻統計範圍內。(摘要、表三至六)

4. Data Definitions

Ocean Vessels and River Vessels

Ocean vessels refer to vessels operating beyond the river trade limits while river vessels refer to vessels plying exclusively within the river trade limits. The interpretation of river trade limits is defined under the Shipping and Port Control Ordinance, Cap. 313, Laws of Hong Kong. (Summary Table, Tables 1 – 10, 16 – 18)

Berthing/Cargo Handling Location

A vessel may berth at more than one location after entering into Hong Kong waters. If the main reason of call of the vessel is for loading/discharging cargo, both the main cargo handling location and the main berthing location refer to the most costly location, with Container Terminals ranked first, followed by Berths and Wharves (including Public Cargo Working Areas), Anchorages and Buoys. If the main reason of call is not for loading/discharging cargo, the main berthing location refers to the one with the longest stay. (Tables 1 – 2, 7, 16 – 17)

River Passenger Vessels

The figures on arrivals of river passenger vessels refer to the number of berthings at the Macau Ferry Terminal (MFT), the China Ferry Terminal (CFT), the Tuen Mun Ferry Terminal (TMFT) and SkyPier. The Tuen Mun Ferry Terminal ceased operation on 1 July 2012. (Summary Table, Tables 3 – 5)

5. Data Limitations

The number of ocean passenger vessels includes pleasure vessels plying beyond the river trade limits. However, as some of their owners/agents do not report NRT information to the Marine Department, the total NRT for ocean passenger vessels may be slightly under-reported. (Summary Table, Tables 1 – 5)

As accurate number of trips of locally licensed pleasure vessels and fishing vessels plying between Hong Kong and the river trade limits is not available, these two categories of vessels are not included in the river vessel statistics. (Summary Table, Tables 3 – 6)

6. 數字的進位

客運量、貨物和貨櫃吞吐量及淨註冊噸位統計數字是計算至最接近的千位。

項目	單位
客運量	千位
貨物吞吐量	千公噸
貨櫃吞吐量	千個標準貨櫃單位
淨註冊噸位	千噸

由於四捨五入關係，本報告中所列的個別數字加起來可能不等於其總數。另外，變動百分率和比重百分率是以未經進位的數字計算所得。

7. 代號

- () 與去年同期比較的變動百分率
- ※ 變動多於 1000%
- ^ 變動在 ±0.05% 之間
- @ 比重百分率少於 0.05
- † 少於 500 個標準貨櫃單位／人次／公噸
- # 臨時數字
- * 修訂數字
- N.A. 沒有數字
- 不適用

6. Rounding of Figures

Statistics on passenger throughput, cargo and container throughput and NRT are rounded to the nearest thousand.

Items	Units
Passenger Throughput	thousand units
Cargo Throughput	'000 tonnes
Container Throughput	'000 TEUs
NRT	'000 tons

Figures shown in this report may not add up to the respective totals due to rounding. Furthermore, percentage changes and percentage shares are calculated from unrounded figures.

7. Symbols

- () % change over the same period of preceding year
- ※ Change more than 1000%
- ^ Change within ±0.05%
- @ Percentage share less than 0.05
- † Less than 500 TEUs/passenger journeys/tonnes
- # Provisional figures
- * Revised figures
- N.A. Not available
- Not applicable

策劃、發展協調及港口保安部
統計組

二零一六年五月

Statistics Section
Planning, Development & Port Security Branch

May 2016

摘要
SUMMARY

2010年至2015年主要港口統計數字
Principal Port Statistics for 2010 – 2015

項目 Item		2010	2014	2015	平均每年變動百分率 Average Annual Rate of Change	
					2014-2015	2010-2015
1. 抵港船次	Number of Vessel Arrivals	211 813	189 451	187 519	-1.0%	-2.4%
(a) 遠洋輪船	Ocean Vessel	32 645	30 176	29 011	-3.9%	-2.3%
遠洋貨船	Ocean Cargo Vessel	30 340	27 402	26 753	-2.4%	-2.5%
遠洋客船	Ocean Passenger Vessel	2 305	2 774	2 258	-18.6%	-0.4%
(b) 內河船隻	River Vessel	179 168	159 275	158 508	-0.5%	-2.4%
內河貨船	River Cargo Vessel	91 039	79 316	73 794	-7.0%	-4.1%
內河客船	River Passenger Vessel	88 129	79 959	84 714	+5.9%	-0.8%
2. 抵港船舶的淨註冊噸位 (千噸)	NRT of Vessel Arrivals ('000 tons)	510 880	515 854	515 571	-0.1%	+0.2%
(a) 遠洋輪船	Ocean Vessel	401 831	404 657	411 828	+1.8%	+0.5%
(b) 內河船隻	River Vessel	109 049	111 197	103 743	-6.7%	-1.0%
3. 貨櫃吞吐量 (千個標準貨櫃單位)	Container Throughput ('000 TEUs)	23 699	22 226	20 073	-9.7%	-3.3%
(i) 按停泊地點分析	By Berthing Location					
貨櫃碼頭	Container Terminals	17 098	17 587	15 572	-11.5%	-1.9%
貨櫃碼頭以外	Other than Container Terminals	6 602	4 639	4 500	-3.0%	-7.4%
(ii) 按運輸方式分析	By Mode of Transport					
遠洋	Ocean	16 248	15 591	13 867	-11.1%	-3.1%
內河	River	7 451	6 635	6 205	-6.5%	-3.6%
4. 貨物吞吐量 (千公噸)	Cargo Throughput ('000 tonnes)	267 815	297 737	256 559	-13.8%	-0.9%
(a) 海運	Seaborne	182 004	197 321	168 586	-14.6%	-1.5%
(b) 河運	River	85 811	100 416	87 973	-12.4%	+0.5%
5. 跨境⁽¹⁾ 渡輪及郵輪乘客人次 (千位)	Cross-boundary⁽¹⁾ Ferry and Cruise Passenger Journeys ('000)	27 901	30 820	30 275	-1.8%	+1.6%
6. 海事處轄下客運碼頭⁽²⁾ 乘客人次 (千位)	Passenger Journeys at Marine Ferry Terminals⁽²⁾ ('000)	24 508	26 628	25 798	-3.1%	+1.0%
(a) 澳門 ⁽³⁾	Macau ⁽³⁾	19 752	21 631	21 242	-1.8%	+1.5%
(b) 中國內地	Mainland China	4 539	4 877	4 549	-6.7%	^
(c) 其他	Others	217	121	7	-94.1%	-49.4%

註釋： (1) 指跨境客運碼頭，即海事處轄下的客運碼頭(包括港澳碼頭、中國客運碼頭及屯門客運碼頭)和海天客運碼頭。

Notes: It refers to cross-boundary ferry terminals, i.e. Marine Ferry Terminals (including Macau Ferry Terminal, China Ferry Terminal and Tuen Mun Ferry Terminal) under the Marine Department and SkyPier.

(2) 屯門客運碼頭於二零一二年七月一日停止運作。

The Tuen Mun Ferry Terminal ceased operation on 1 July 2012.

(3) 數字包括乘搭直升機來往澳門的乘客人次。

Figures include helicopter passenger journeys to and from Macau.

統計表
Statistical
Tables

表 1
TABLE 1

2015 年按主要停泊地點分析抵港遠洋輪船的船次
Ocean Vessel Arrivals by Main Berthing Location, 2015

主要停泊地點 Main Berthing Location	主要船舶類別 Main Vessel Category				總計 Total	
	貨船 Cargo Vessels		客船 Passenger Vessels			
	抵港船次 No. of Vessel Arrivals	淨註冊噸位 (千噸) NRT ('000)	抵港船次 No. of Vessel Arrivals	淨註冊噸位 (千噸) NRT ('000)	抵港船次 No. of Vessel Arrivals	淨註冊噸位 (千噸) NRT ('000)
	(%)	(%)	(%)	(%)	(%)	(%)
貨櫃碼頭 Container Terminals	10 744 (+0.4)	246 089 (-2.2)	0 (-)	0 (-)	10 744 (+0.4)	246 089 (-2.2)
泊位和倉庫碼頭 Berths and Wharves	2 020 (+10.5)	15 880 (+3.4)	662 (-30.5)	20 958 (+11.4)	2 682 (-3.5)	36 838 (+7.8)
碇泊處 Anchorages	13 956 (-6.0)	120 675 (+10.2)	273 (+3.0)	510 (-18.3)	14 229 (-5.9)	121 185 (+10.0)
浮泡 Buoys	33 (+43.5)	127 (+47.0)	1 323 (-15.0)	7 590 (-13.1)	1 356 (-14.2)	7 717 (-12.5)
總計 Total	26 753 (-2.4)	382 770 (+1.7)	2 258 (-18.6)	29 058 (+3.1)	29 011 (-3.9)	411 828 (+1.8)

表 2
TABLE 2

2015 年按主要停泊地點分析離港遠洋輪船的船次
Ocean Vessel Departures by Main Berthing Location, 2015

主要停泊地點 Main Berthing Location	主要船舶類別 Main Vessel Category				總計 Total	
	貨船 Cargo Vessels		客船 Passenger Vessels			
	離港船次 No. of Vessel Departures	淨註冊噸位 (千噸) NRT ('000)	離港船次 No. of Vessel Departures	淨註冊噸位 (千噸) NRT ('000)	離港船次 No. of Vessel Departures	淨註冊噸位 (千噸) NRT ('000)
	(%)	(%)	(%)	(%)	(%)	(%)
貨櫃碼頭 Container Terminals	10 820 (-1.6)	245 563 (-4.6)	0 (-)	0 (-)	10 820 (-1.6)	245 563 (-4.6)
泊位和倉庫碼頭 Berths and Wharves	2 168 (+8.5)	16 368 (+4.1)	659 (-30.7)	20 964 (+11.5)	2 827 (-4.2)	37 331 (+8.1)
碇泊處 Anchorages	12 804 (-2.2)	112 092 (+10.8)	307 (-3.2)	530 (-16.1)	13 111 (-2.2)	112 622 (+10.6)
浮泡 Buoys	29 (+11.5)	112 (+9.8)	1 323 (-15.1)	7 589 (-13.2)	1 352 (-14.6)	7 702 (-12.9)
總計 Total	25 821 (-1.1)	374 135 (-0.1)	2 289 (-19.0)	29 083 (+3.2)	28 110 (-2.9)	403 218 (+0.1)

表3
TABLE 3

2015年按船舶類型分析抵港船舶的船次
Vessel Arrivals by Ship Type, 2015

船舶類型 Ship Type	遠洋輪船 Ocean Vessels		內河船隻 River Vessels		總計 Total	
	抵港船次 No. of Vessel Arrivals	比重 百分率 Percentage Share	抵港船次 No. of Vessel Arrivals	比重 百分率 Percentage Share	抵港船次 No. of Vessel Arrivals	比重 百分率 Percentage Share
	(%)		(%)		(%)	
運車船 Car Carrier	180 (+12.5)	0.6%	5 (-50.0)	@	185 (+8.8)	0.1%
化學品運載船 Chemical Carrier/Tanker	414 (+3.8)	1.4%	140 (-25.5)	0.1%	554 (-5.6)	0.3%
普通貨船 Conventional Cargo Vessel	2 080 (+4.8)	7.2%	7 502 (+8.6)	4.7%	9 582 (+7.7)	5.1%
其他貨船 Other Cargo Vessel	0 (-)	0%	0 (-)	0%	0 (-)	0%
郵船／渡輪 Cruise/Ferry	2 008 (-20.6)	6.9%	84 714 (+5.9)	53.4%	86 722 (+5.1)	46.2%
散裝乾貨船 Dry Bulk Carrier	3 299 (+36.4)	11.4%	6 122 (-31.0)	3.9%	9 421 (-16.6)	5.0%
漁船／魚類加工船 Fishing/Fish Processing Vessel	373 (+19.2)	1.3%	N.A.	N.A.	373 (+19.2)	0.2%
全槽格式貨櫃船 Fully Cellular Container Vessel	17 533 (-0.8)	60.4%	47 921 (-6.2)	30.2%	65 454 (-4.8)	34.9%
液化氣體運載船 Gas Carrier/Tanker	314 (+0.3)	1.1%	128 (-11.1)	0.1%	442 (-3.3)	0.2%
駁船／躉船／貨艇 Lighter/Barge/Cargo Junk	898 (-58.9)	3.1%	1 901 (-28.6)	1.2%	2 799 (-42.2)	1.5%
油輪 Oil Tanker	748 (+2.6)	2.6%	622 (+15.0)	0.4%	1 370 (+7.9)	0.7%
礦沙／散貨／油類混用船 Ore/Bulk/Oil (OBO) Carrier	24 (+84.6)	0.1%	5 (-)	@	29 (+123.1)	@
其他液體運載船 Other Fluid Carrier	0 (-)	0%	0 (-)	0%	0 (-)	0%
遊樂船 Pleasure Vessel	250 (+2.5)	0.9%	N.A.	N.A.	250 (+2.5)	0.1%
滾裝卸式船 Roll On/Roll Off	178 (-13.6)	0.6%	7 (-66.7)	@	185 (-18.5)	0.1%
半貨櫃船 Semi-container Vessel	172 (-29.8)	0.6%	7 290 (+11.7)	4.6%	7 462 (+10.2)	4.0%
拖船 Tug	345 (-30.4)	1.2%	1 993 (-8.5)	1.3%	2 338 (-12.6)	1.2%
其他 Others	195 (-25.6)	0.7%	158 (-16.0)	0.1%	353 (-21.6)	0.2%
總計 Total	29 011 (-3.9)	100.0%	158 508 (-0.5)	100.0%	187 519 (-1.0)	100.0%

表 4
TABLE 4

2015 年按船旗分析抵港船舶的船次
Vessel Arrivals by Flag, 2015

船旗 Flag	遠洋輪船 Ocean Vessels				內河船隻 River Vessels				總計 Total			
	抵港船次 No. of Vessel Arrivals		淨註冊噸位 (千噸) NRT ('000)		抵港船次 No. of Vessel Arrivals		淨註冊噸位 (千噸) NRT ('000)		抵港船次 No. of Vessel Arrivals		淨註冊噸位 (千噸) NRT ('000)	
		(%)		(%)		(%)		(%)		(%)		(%)
安提瓜和巴布達 Antigua and Barbuda	624	(-11.2)	3 952	(-11.8)	128	(+32.0)	706	(+23.7)	752	(-6.0)	4 658	(-7.8)
巴哈馬 Bahamas	1 364	(-0.7)	28 347	(+20.7)	34	(+100.0)	414	(+33.6)	1 398	(+0.5)	28 761	(+20.9)
伯利茲 Belize	113	(-24.2)	303	(-7.9)	12	(-42.9)	36	(-19.6)	125	(-26.5)	339	(-9.3)
柬埔寨 Cambodia	213	(+53.2)	477	(+50.3)	8	(-38.5)	16	(-40.5)	221	(+45.4)	494	(+43.1)
中國內地 Mainland China	5 675	(+4.6)	21 727	(+5.1)	94 602	(-3.7)	61 458	(-5.2)	100 277	(-3.3)	83 185	(-2.7)
塞浦路斯 Cyprus	761	(+4.2)	8 431	(+8.0)	88	(+14.3)	776	(-2.4)	849	(+5.2)	9 207	(+7.1)
丹麥 Denmark	140	(-16.7)	7 850	(-7.1)	4	(-60.0)	154	(-60.4)	144	(-19.1)	8 003	(-9.4)
法國 France	59	(-13.2)	3 204	(-16.3)	4	(-50.0)	199	(-51.4)	63	(-17.1)	3 403	(-19.7)
德國 Germany	193	(-32.8)	8 389	(-36.1)	33	(+106.3)	1 168	(+86.6)	226	(-25.4)	9 557	(-30.5)
直布羅陀 Gibraltar	60	(+114.3)	613	(+119.1)	7	(+75.0)	38	(-7.3)	67	(+109.4)	650	(+103.1)
希臘 Greece	82	(-25.5)	3 270	(-29.7)	12	(+71.4)	323	(+82.8)	94	(-19.7)	3 593	(-25.5)
香港 Hong Kong	4 240	(-20.6)	65 875	(+1.0)	62 107	(+4.9)	19 258	(-1.9)	66 347	(+2.8)	85 133	(+0.4)
意大利 Italy	97	(+7.8)	2 664	(+18.2)	5	(+25.0)	158	(+102.4)	102	(+8.5)	2 822	(+21.0)
牙買加 Jamaica	432	(-38.2)	2 183	(-40.5)	0	(-)	0	(-)	432	(-38.2)	2 183	(-40.5)
基里巴斯共和國 Republic of Kiribati	64	(+36.2)	151	(+2.7)	1	(-87.5)	2	(-91.7)	65	(+18.2)	153	(-10.7)
南韓 Republic of Korea	791	(-4.8)	6 782	(+1.7)	52	(+18.2)	339	(+64.6)	843	(-3.7)	7 120	(+3.5)
利比里亞 Liberia	2 383	(-1.1)	53 126	(+1.6)	215	(-5.3)	4 742	(-16.3)	2 598	(-1.5)	57 868	(-0.2)

表 4 – 續
TABLE 4 – Cont'd

船旗 Flag	遠洋輪船 Ocean Vessels				內河船隻 River Vessels				總計 Total			
	抵港船次 No. of Vessel Arrivals		淨註冊噸位 (千噸) NRT ('000)		抵港船次 No. of Vessel Arrivals		淨註冊噸位 (千噸) NRT ('000)		抵港船次 No. of Vessel Arrivals		淨註冊噸位 (千噸) NRT ('000)	
		(%)		(%)		(%)		(%)		(%)		(%)
馬耳他 Malta	560	(+8.3)	15 393	(-1.9)	52	(+40.5)	1 068	(-13.8)	612	(+10.5)	16 461	(-2.8)
馬紹爾群島 Marshall Islands	1 485	(+29.4)	28 030	(+37.3)	124	(+10.7)	1 702	(-2.7)	1 609	(-2.7)	29 732	(+34.1)
巴拿馬 Panama	4 504	(-6.7)	65 957	(-11.0)	434	(-26.9)	5 472	(-36.3)	4 938	(-8.9)	71 429	(-13.7)
葡萄牙 Portugal	159	(+174.1)	4 092	(+132.3)	11	(+450.0)	264	(+282.6)	170	(+282.6)	4 356	(+138.0)
塞拉利昂 Sierra Leone	111	(+42.3)	179	(+30.1)	6	(+20.0)	20	(+209.2)	117	(+41.0)	200	(+38.2)
新加坡 Singapore	2 591	(+5.0)	47 486	(+10.1)	247	(+13.8)	2 468	(-7.5)	2 838	(+5.7)	49 953	(+9.1)
台灣 Taiwan	768	(+15.3)	5 676	(+9.2)	67	(-19.3)	558	(-15.2)	835	(+11.5)	6 234	(+6.4)
泰國 Thailand	199	(-27.9)	947	(-23.2)	7	(+133.3)	16	(+295.0)	206	(-26.2)	963	(-22.1)
英國 United Kingdom	534	(+1.7)	18 624	(+15.4)	36	(+12.5)	1 324	(+15.6)	570	(+2.3)	19 948	(+15.4)
越南 Vietnam	285	(+35.7)	1 391	(+40.8)	19	(-17.4)	67	(-2.6)	304	(+30.5)	1 457	(+38.0)
其他 ⁽¹⁾ Others ⁽¹⁾	524	(-35.2)	6 711	(-18.0)	193	(+30.4)	998	(-13.7)	717	(-25.1)	7 709	(-17.5)
總計 Total	29 011	(-3.9)	411 828	(+1.8)	158 508	(-0.5)	103 743	(-6.7)	187 519	(-1.0)	515 571	(-0.1)

註釋： (1) 包括所有在二零一五年遠洋輪船抵港船次總數少於 50 船次的旗號。

Note: Including those flags of which the total number of ocean vessel arrivals in 2015 being less than 50.

表 5
TABLE 5

2015 年按船旗分析曾停靠香港的船舶數目和淨註冊噸位
Number and NRT of Vessels Calling Hong Kong by Flag, 2015

船旗 Flag	遠洋輪船 Ocean Vessels				內河船隻 River Vessels			
	船舶數目 Number of Vessels		淨註冊噸位 (千噸) NRT ('000)		船舶數目 Number of Vessels		淨註冊噸位 (千噸) NRT ('000)	
	(%)		(%)		(%)		(%)	
安提瓜和巴布達 Antigua and Barbuda	81	(-8.0)	581	(-25.7)	29	(-12.1)	218	(-15.5)
巴哈馬 Bahamas	122	(+17.3)	3 190	(+31.5)	16	(-5.9)	345	(+11.4)
伯利茲 Belize	41	(+17.1)	99	(+15.8)	10	(-23.1)	30	(+29.6)
柬埔寨 Cambodia	55	(+31.0)	138	(+28.8)	7	(-36.4)	14	(-39.3)
中國內地 Mainland China	560	(-1.9)	6 283	(+3.7)	1 494	(-5.0)	3 730	(-28.4)
塞浦路斯 Cyprus	84	(-17.6)	1 664	(-22.4)	20	(-9.1)	255	(-35.0)
丹麥 Denmark	59	(-3.3)	3 141	(+6.4)	4	(-60.0)	154	(-60.4)
法國 France	21	(0)	926	(-5.1)	3	(-57.1)	149	(-58.7)
德國 Germany	58	(-20.5)	2 704	(-14.2)	16	(+14.3)	748	(+34.2)
希臘 Greece	55	(+10.0)	2 017	(-1.3)	12	(+71.4)	323	(+82.8)
香港 Hong Kong	865	(+7.3)	17 387	(+14.3)	567	(-5.7)	3 558	(-11.0)
意大利 Italy	25	(+8.7)	817	(+39.8)	5	(+25.0)	158	(+102.4)
日本 Japan	21	(-25.0)	518	(-18.4)	1	(-50.0)	36	(-54.7)
基里巴斯共和國 Republic of Kiribati	20	(-9.1)	53	(-27.6)	1	(-85.7)	2	(-91.1)
南韓 Republic of Korea	117	(-8.6)	1 017	(+10.7)	29	(+11.5)	227	(+45.2)
利比里亞 Liberia	543	(+0.4)	14 961	(+2.5)	147	(+1.4)	3 581	(-7.6)
馬耳他 Malta	158	(0)	4 538	(-10.1)	42	(+20.0)	986	(-19.6)

表 5 – 續
TABLE 5 – Cont'd

船旗 Flag	遠洋輪船 Ocean Vessels				內河船隻 River Vessels			
	船舶數目 Number of Vessels		淨註冊噸位 (千噸) NRT ('000)		船舶數目 Number of Vessels		淨註冊噸位 (千噸) NRT ('000)	
	(%)		(%)		(%)		(%)	
馬紹爾群島 Marshall Islands	376	(+40.3)	8 827	(+54.3)	65	(+1.6)	1 213	(-11.2)
挪威 Norway	24	(+71.4)	439	(+92.8)	8	(+100.0)	154	(+166.7)
巴拿馬 Panama	1 239	(-2.6)	22 240	(-5.2)	271	(-23.0)	4 625	(-21.6)
菲律賓 Philippines	31	(+10.7)	280	(+6.9)	4	(+33.3)	68	(+111.8)
葡萄牙 Portugal	31	(+210.0)	911	(+205.8)	10	(+900.0)	227	(+318.8)
塞拉利昂 Sierra Leone	24	(+14.3)	50	(+10.0)	6	(+20.0)	20	(+209.2)
新加坡 Singapore	470	(+3.1)	10 875	(+10.5)	111	(-7.5)	1 546	(-18.5)
聖文森特和 格林納丁斯 St. Vincent and the Grenadines	23	(-23.3)	113	(-42.4)	7	(-22.2)	4	(-87.3)
台灣 Taiwan	73	(+32.7)	920	(+30.2)	8	(-27.3)	47	(-64.7)
泰國 Thailand	34	(+13.3)	185	(+40.0)	6	(+100.0)	15	(+263.9)
英國 United Kingdom	159	(-6.5)	5 267	(-1.6)	28	(+12.0)	1 112	(+28.0)
越南 Vietnam	62	(+31.9)	304	(+37.3)	15	(-11.8)	53	(+26.4)
其他 ⁽¹⁾ Others ⁽¹⁾	201	(-9.0)	2 390	(-15.8)	64	(-14.7)	617	(-31.1)
總計 Total	5 632	(+2.9)	112 836	(+5.4)	3 006	(-6.5)	24 216	(-14.8)

備註： 此表內的遠洋輪船及內河船隻數目不能直接地加在一起，因為同一艘船舶在一年內不同的抵港旅程可能會被歸納於遠洋及內河船舶類別，視乎該抵港旅程是否超越內河航限而定。

Remark: The number of ocean vessels and river vessels in this table cannot be grouped together by simple addition as the same vessel may be classified as ocean and river vessel in different trips during a year depending on whether her trips to Hong Kong were beyond the river trade limits or not.

註釋： (1) 包括所有在二零一五年遠洋輪船抵港船舶總數少於 20 船舶的旗號。

Note: Including those flags of which the total number of ocean vessels calling Hong Kong in 2015 being less than 20.

表 6
TABLE 6

2015 年按船舶類型分析離港船舶的平均在港停留時間
Average Time in Port for Vessels Departing Hong Kong by Ship Type, 2015

小時
Hours

船舶類型 Ship Type	遠洋輪船 Ocean Vessels	內河船隻 River Vessels	總計 Total
化學品運載船 Chemical Carrier/Tanker	19	41	22
普通貨船 Conventional Cargo Vessel	32	26	27
郵船／渡輪 Cruise/Ferry	14	N.A.	N.A.
散裝乾貨船 Dry Bulk Carrier	25	50	41
漁船／魚類加工船 Fishing/Fish Processing Vessel	78	N.A.	N.A.
全槽格式貨櫃船 Fully Cellular Container Vessel	21	37	33
液化氣體運載船 Gas Carrier/Tanker	57	79	62
駁船／躉船／貨艇 Lighter/Barge/Cargo Junk	102	66	70
油輪 Oil Tanker	36	85	54
滾裝卸式船 Roll On/Roll Off	8	11	9
半貨櫃船 Semi-container Vessel	49	50	50
拖船 Tug	122	118	118
其他 Others	39	81	53
所有船舶類型 All Ship Types	28	42	38

表 7
TABLE 7

2015 年在貨櫃碼頭處理貨櫃的遠洋輪船統計數字
Statistics on Ocean Vessels with Containers Handled in Container Terminals, 2015

項目 Item	抵港船次 No. of Vessel Arrivals	比重百分率 Percentage Share
在貨櫃碼頭處理貨櫃的遠洋輪船 Ocean Vessels with Containers Handled in Container Terminals	(%) 10 710 (+0.4)	100.0%
- 按載重噸分析 Analysed by Deadweight Tonnage (DWT)		
少於 10 000 載重噸 Under 10 000 DWT	302 (-16.1)	2.8%
10 000 - 19 999 載重噸 10 000 - 19 999 DWT	1 898 (+3.8)	17.7%
20 000 - 29 999 載重噸 20 000 - 29 999 DWT	2 273 (+7.3)	21.2%
30 000 - 39 999 載重噸 30 000 - 39 999 DWT	1 268 (+9.4)	11.8%
40 000 - 49 999 載重噸 40 000 - 49 999 DWT	197 (-12.1)	1.8%
50 000 - 99 999 載重噸 50 000 - 99 999 DWT	3 205 (-7.4)	29.9%
100 000 載重噸及以上 100 000 DWT and above	1 567 (+3.2)	14.6%
- 按主要貿易地區／國家分析 (根據所申報的上一個停靠港口) Analysed by Principal Trading Region/Country (Based on Reported Previous Port)		
亞洲 Asia	9 837 (+3.0)	91.8%
- 中國內地 - Mainland China	2 394 (^)	22.4%
- 台灣 - Taiwan	2 133 (+4.2)	19.9%
- 新加坡 - Singapore	1 307 (-2.2)	12.2%
- 越南 - Vietnam	1 294 (+4.0)	12.1%
- 泰國 - Thailand	727 (+7.7)	6.8%
- 韓國 - Korea	598 (+1.9)	5.6%
- 菲律賓 - Philippines	396 (+41.9)	3.7%
- 日本 - Japan	371 (-24.4)	3.5%
- 其他 - Others	617 (+24.4)	5.8%
北美洲 North America	270 (-15.1)	2.5%
西歐 Western Europe	108 (-40.7)	1.0%
中美洲、南美洲 Central and South America	158 (-7.1)	1.5%
大洋洲 Oceania	129 (-3.7)	1.2%
獨立國家聯合體及東歐 CIS and Eastern Europe	74 (-37.8)	0.7%
非洲 Africa	41 (-32.8)	0.4%
中東 Middle East	18 (-60.0)	0.2%
其他 Others	75 (-15.7)	0.7%
香港港口的平均停留時間 (包括非在貨櫃碼頭的時間) (小時) Average Time in Hong Kong Port (Including Time Outside Container Terminals) (Hours)	15.3	

表 8
TABLE 8

2015 年按夏季吃水分析抵港遠洋輪船的船次
Ocean Vessel Arrivals by Summer Draft, 2015

夏季吃水 (米) Summer Draft (m)	抵港船次 No. of Vessel Arrivals		比重百分率 Percentage Share
		(%)	
< 2	63	(+16.7)	0.2%
2 – < 4	3 506	(-4.1)	12.1%
4 – < 6	3 074	(+5.4)	10.6%
6 – < 8	3 321	(-5.8)	11.4%
8 – < 10	6 977	(-8.1)	24.0%
10 – < 12	3 771	(-2.0)	13.0%
12 – < 14	3 669	(+15.9)	12.6%
14 – < 16	4 204	(-7.3)	14.5%
16 – < 18	195	(-53.1)	0.7%
≥ 18	231	(-51.1)	0.8%
總計 Total	29 011	(-3.9)	100.0%

表 9
TABLE 9

2015 年按船舶總長度分析抵港遠洋輪船的船次
Ocean Vessel Arrivals by Vessel Length Overall, 2015

船舶總長度 (米) Vessel Length Overall (m)	抵港船次 No. of Vessel Arrivals		比重百分率 Percentage Share
		(%)	
< 30	628	(-13.4)	2.2%
30 – < 50	600	(-3.4)	2.1%
50 – < 100	5 487	(-1.0)	18.9%
100 – < 150	5 963	(-20.2)	20.6%
150 – < 200	7 639	(+5.6)	26.3%
200 – < 250	2 852	(+8.3)	9.8%
250 – < 300	3 417	(+1.5)	11.8%
300 – < 350	1 881	(-3.7)	6.5%
≥ 350	544	(-13.8)	1.9%
總計 Total	29 011	(-3.9)	100.0%

表 10
TABLE 10

2015 年按主要來港原因分析抵港遠洋輪船的船次
Ocean Vessel Arrivals by Main Reason of Call, 2015

主要來港原因 Main Reason of Call	抵港船次 No. of Vessel Arrivals		比重百分率 Percentage Share
		(%)	
裝貨、卸貨 Loading and Discharging Cargo	18 891	(-7.9)	65.1%
旅遊 (郵輪) Tour (Cruise)	1 991	(-21.1)	6.9%
船上用品補給 (燃料除外) Taking Stores (Except Bunkers)	1 792	(+27.7)	6.2%
交換文件 Switch Documents	1 699	(+0.5)	5.9%
補充燃料 Bunkers	1 649	(+10.3)	5.7%
卸貨 Discharging Cargo	1 175	(+6.6)	4.1%
裝貨 Loading Cargo	509	(+14.4)	1.8%
消遣／運動 (遊艇) Pleasure/Sports (Pleasure Vessels)	250	(+2.5)	0.9%
船員變動 (貨船) Change of Crew (Cargo Vessels)	50	(+61.3)	0.2%
緊急修理、非例行入乾塢 Emergency Repair, Non-routine Dry Docking	30	(-14.3)	0.1%
例行入乾塢 Routine Dry Docking	29	(+26.1)	0.1%
其他 Others	946	(+39.9)	3.3%
總計 Total	29 011	(-3.9)	100.0%

表 11
TABLE 11

2015 年按停泊地點及有否目的地分析郵輪抵港船次⁽¹⁾
Cruise Arrivals⁽¹⁾ by Berthing Location by Whether the Trip with Destination, 2015

停泊地點 Berthing Location	有目的地 With Destination		公海 ⁽²⁾ High Seas ⁽²⁾		總計 Total	
	數目 Number	變動百分率 Percentage Change	數目 Number	變動百分率 Percentage Change	數目 Number	變動百分率 Percentage Change
海運大廈 Ocean Terminal	86	-15.7%	485	+10.2%	571	+5.4%
中國客運碼頭 China Ferry Terminal	0	-100.0%	26	-92.9%	26	-93.1%
浮泡和碇泊處 Buoys and Anchorages	0	-100.0%	1 334	-15.1%	1 334	-15.2%
啟德郵輪碼頭 Kai Tak Cruise Terminal	56	+100.0%	0	-	56	+100.0%
其他 ⁽³⁾ Others ⁽³⁾	0	-	6	+20.0%	6	+20.0%
總計 Total	142	+1.4%	1 851	-22.4%	1 993	-21.0%

註釋： (1) 不包括非載客的船次，例如緊急修理、補充燃料等。
Notes: Excluding those trips not for passenger carrying, e.g. emergency repair, bunkers, etc.

(2) 根據海商法，公海的定義是指不屬於任何國家領海或內水的海域。
According to Maritime Law, High Seas is defined to be the waters lying outside the territorial waters of any countries.

(3) 包括私人泊位和倉庫碼頭、船塢及葵青貨櫃碼頭。
Including private berths and wharves, docks, and Kwai Tsing Container Terminals.

資料來源： 海事處船隻航行監察中心
Data Source: Vessel Traffic Centre, Marine Department

表 12
TABLE 12

2015 年跨境客運碼頭⁽¹⁾的抵港及離港航次統計數字⁽²⁾
Statistics on Vessel Arrivals and Departures at Cross-boundary Ferry Terminals^{(1) (2)}, 2015

來往 From/To	運輸工具類別 Type of Carrier	提供服務的船舶/ 直升機數目 No. of Vessels/ Helicopters in Services		抵港 Arrivals				離港 Departures			
				航次 No. of Trips		淨註冊噸位 (千噸) NRT ('000)		航次 No. of Trips		淨註冊噸位 (千噸) NRT ('000)	
			(%)	(%)	(%)	(%)	(%)	(%)	(%)	(%)	
澳門 Macau	雙體船 Catamaran	35	(-7.9)	41 938	(+7.1)	9 062	(+7.4)	42 743	(+6.8)	9 239	(+7.1)
	噴射飛翼船 Jetfoil	11	(0)	14 690	(+0.8)	1 397	(-1.7)	14 821	(+0.5)	1 410	(-2.1)
	直升機 Helicopter	6	(0)	6 466	(+2.6)	-	(-)	6 466	(+2.6)	-	(-)
小計 - 澳門 Sub-total - Macau				63 094	(+5.1)	10 459	(+6.1)	64 030	(+4.8)	10 649	(+5.8)
高明 Gaoming	雙體船 Catamaran	1	(0)	314	(-11.5)	55	(-11.5)	315	(-11.5)	55	(-11.5)
虎門 Humen	雙體船 Catamaran	4	(-20.0)	1 832	(-0.2)	288	(+0.2)	1 822	(-0.4)	286	(^)
江門 Jiangmen	雙體船 Catamaran	1	(-66.7)	461	(+5.7)	63	(+5.7)	462	(+5.5)	63	(+5.4)
蓮花山 Lianhuashan	雙體船 Catamaran	4	(0)	2 067	(+14.4)	340	(+13.9)	2 069	(+14.6)	340	(+14.1)
南沙 Nansha	雙體船 Catamaran	5	(0)	1 051	(+21.5)	199	(+21.1)	1 054	(+22.0)	199	(+21.7)
蛇口 Shekou	雙體船 Catamaran	18	(+5.9)	7 103	(+0.3)	969	(+8.1)	7 035	(+0.1)	958	(+7.9)
深圳 Shenzhen	雙體船 Catamaran	11	(+175.0)	2 710	(+73.1)	468	(+84.2)	2 741	(+75.3)	472	(+86.4)
順德 Shunde	雙體船 Catamaran	3	(0)	1 797	(+1.5)	302	(+1.2)	1 806	(+1.1)	304	(+0.8)
中山 Zhongshan	雙體船 Catamaran	7	(0)	4 104	(+5.9)	696	(+5.8)	4 087	(-0.4)	694	(-0.5)
珠海 Zhuhai	雙體船 Catamaran	11	(0)	6 647	(+0.2)	1 102	(+0.8)	6 680	(-0.4)	1 108	(+0.1)
小計 - 內河港口 Sub-total - River Trade Ports				28 086	(+7.1)	4 482	(+10.1)	28 071	(+6.0)	4 479	(+8.8)
公海 Open Sea	大船 Conventional Ferry	1	(0)	26	(-92.9)	138	(-92.9)	25	(-93.2)	133	(-93.2)
小計 - 其他 Sub-total - Others				26	(-92.9)	138	(-92.9)	25	(-93.2)	133	(-93.2)
總計 Total				91 206	(+5.3)	15 079	(-5.3)	92 126	(+4.8)	15 261	(-5.7)

註釋： (1) 指跨境客運碼頭，即海事處轄下的客運碼頭(包括港澳碼頭及中國客運碼頭)和海天客運碼頭。

Notes: It refers to cross-boundary ferry terminals, i.e. Marine Ferry Terminals (including Macau Ferry Terminal and China Ferry Terminal) under the Marine Department and SkyPier.

(2) 數字不包括非載客的跨境渡輪船次。

Non-passenger carrying trips of cross-boundary ferry are excluded.

資料來源： 海事處客運碼頭組及香港國際機場客運碼頭服務有限公司

Data Sources: Ferry Terminals Section, Marine Department and Hong Kong International Airport Ferry Terminal Services Ltd.

表 13
TABLE 13

2015 年按船舶類型分析香港過境船舶的船次⁽¹⁾
Number of Vessel Trips Transit Hong Kong⁽¹⁾ by Ship Type, 2015

船舶類型 Ship Type	過境船次 Vessel Trips Transit Hong Kong	變動百分率 Percentage Change	淨註冊噸位 (千噸) NRT ('000)	變動百分率 Percentage Change
全槽格式貨櫃船 Fully Cellular Container Vessel	16 972	+15.3%	551 615	+16.0%
拖船 Tug	144	-82.6%	110	-85.6%
普通貨船 Conventional Cargo Vessel	383	-23.6%	2 153	-17.5%
散裝乾貨船 Dry Bulk Carrier	299	-16.5%	5 870	-17.3%
液化氣體運載船 Gas Carrier/Tanker	176	+10.2%	5 447	+6.2%
化學品運載船 Chemical Carrier/Tanker	116	+30.3%	586	+2.7%
油輪 Oil Tanker	104	+18.2%	1 184	+12.2%
其他 Others	259	-52.7%	489	-61.3%
總計 Total	18 453	+6.5%	567 454	+14.9%

註釋： (1) 只包括曾提供到達前通知書的過境香港水域船舶的船次。

Note: Including only those vessel trips transit Hong Kong waters with Pre-arrival Notification.

資料來源： 海事處船隻航行監察中心

Data Source: Vessel Traffic Centre, Marine Department

表 14
TABLE 14

2015 年按跨境客運碼頭分析客運量
Passenger Throughput by Cross-boundary Ferry Terminal, 2015

千位 ('000)

來往 From/To	澳門 Macau	中國內地 Mainland China	公海 Open Sea	總計 Total
	(%)	(%)	(%)	(%)
海事處轄下客運碼頭 ⁽¹⁾ Marine Ferry Terminals ⁽¹⁾	21 242 (-1.8)	4 549 (-6.7)	7 (-94.1)	25 798 (-3.1)
港澳碼頭 ⁽²⁾ Macau Ferry Terminal ⁽²⁾	16 042 (-1.2)	1 288 (-5.2)	- (-)	17 330 (-1.5)
中國客運碼頭 China Ferry Terminal	5 200 (-3.6)	3 261 (-7.3)	7 (-94.1)	8 468 (-6.3)
海天客運碼頭 SkyPier	869 (-13.4)	1 991 (+13.6)	- (-)	2 860 (+3.8)
總計 Total	22 111 (-2.3)	6 540 (-1.4)	7 (-94.1)	28 658 (-2.5)

註釋： (1) 數字與入境事務處發布的統計數字並不相等，原因是入境事務處的數字包括毋須付船費的乘客 (例如不足一歲者)。

Notes: Figures do not tally with those released by the Immigration Department because figures of the Immigration Department cover passengers who are not required to pay fares (e.g. passengers less than one year of age).

(2) 數字包括乘搭直升機來往澳門的乘客人次。
Figures include helicopter passenger journeys to and from Macau.

資料來源： 海事處客運碼頭組及香港國際機場客運碼頭服務有限公司
Data Sources: Ferry Terminals Section, Marine Department and Hong Kong International Airport Ferry Terminal Services Ltd.

表 15
TABLE 15

2015 年按航線分析抵港及離港乘客人次
Passenger Arrivals and Departures by Route, 2015

I. 海事處轄下客運碼頭⁽¹⁾
Marine Ferry Terminals⁽¹⁾

來往 From/To	運輸工具類別 Type of Carrier	抵港乘客 Passenger Arrivals		離港乘客 Passenger Departures	
		乘客人次 (千位) Passenger Journeys ('000)	載客率 Passenger Load Factor	乘客人次 (千位) Passenger Journeys ('000)	載客率 Passenger Load Factor
		(%)	(%)	(%)	(%)
澳門 Macau	雙體船 Catamaran	7 230 (+1.3)	50.7% (-5.5)	9 875 (-2.9)	64.4% (-9.1)
	噴射飛翼船 Jetfoil	2 016 (-4.9)	62.7% (+3.4)	2 071 (-3.1)	63.8% (+5.6)
	直升機 Helicopter	24 (-18.6)	31.1% (-20.6)	26 (-18.3)	33.6% (-20.3)
小計 – 澳門 Sub-total – Macau		9 270 (-0.2)	52.8% (-4.0)	11 972 (-3.0)	64.1% (-6.6)
高明 Gaoming	雙體船 Catamaran	41 (-27.5)	38.7% (-18.0)	39 (-25.3)	36.4% (-15.6)
江門 Jiangmen	雙體船 Catamaran	46 (-10.5)	28.3% (-15.3)	49 (-13.4)	29.7% (-17.8)
蓮花山 Lianhuashan	雙體船 Catamaran	206 (-24.7)	36.8% (-15.5)	190 (-24.4)	33.9% (-15.3)
南沙 Nansha	雙體船 Catamaran	85 (+1.0)	23.6% (-21.1)	98 (+8.2)	27.2% (-15.4)
蛇口 Shekou	雙體船 Catamaran	135 (-5.9)	23.2% (-6.9)	115 (-5.3)	19.7% (-6.1)
深圳 ⁽²⁾ Shenzhen ⁽²⁾	雙體船 Catamaran	1 (+18.1)	0.9% (-52.6)	1 (+36.1)	1.1% (-51.9)
順德 Shunde	雙體船 Catamaran	293 (-11.2)	47.9% (-12.5)	288 (-10.4)	46.9% (-11.4)
中山 Zhongshan	雙體船 Catamaran	482 (-2.9)	52.5% (+3.4)	497 (-4.0)	47.5% (-1.5)
珠海 Zhuhai	雙體船 Catamaran	975 (-2.2)	55.3% (-2.6)	1 010 (-2.3)	56.9% (-1.8)
小計 – 內河港口 Sub-total – River Trade Ports		2 264 (-7.0)	44.0% (-7.2)	2 285 (-6.5)	43.4% (-6.8)
公海 Open Sea	大船 Conventional Ferry	4 (-94.0)	25.4% (-15.2)	4 (-94.2)	25.7% (-13.9)
小計 – 其他 Sub-total – Others		4 (-94.0)	25.4% (-15.2)	4 (-94.2)	25.7% (-13.9)
海事處轄下客運碼頭 Marine Ferry Terminals		11 537 (-2.1)	50.8% (-4.2)	14 261 (-4.0)	59.6% (-6.0)

註釋： (1) 指海事處轄下的客運碼頭(即港澳碼頭及中國客運碼頭)。

Notes: It refers to Marine Ferry Terminals (i.e. Macau Ferry Terminal and China Ferry Terminal) under the Marine Department.

(2) 深圳新航線於二零一四年七月十九日啟航。

The new Shenzhen route commenced operation on 19 July 2014.

表 15 - 續
TABLE 15 - Cont'd

II. 海天客運碼頭
SkyPier

來往 From/To	運輸工具類別 Type of Carrier	抵港乘客 Passenger Arrivals				離港乘客 Passenger Departures			
		乘客人次 (千位) Passenger Journeys ('000)		載客率 Passenger Load Factor		乘客人次 (千位) Passenger Journeys ('000)		載客率 Passenger Load Factor	
			(%)		(%)		(%)		(%)
澳門 Macau	雙體船 Catamaran	541	(-19.9)	27.4%	(-26.6)	328	(+0.1)	26.8%	(-10.3)
小計 - 澳門 Sub-total - Macau		541	(-19.9)	27.4%	(-26.6)	328	(+0.1)	26.8%	(-10.3)
虎門 Humen	雙體船 Catamaran	241	(+6.5)	42.7%	(+6.2)	84	(-4.4)	14.9%	(-4.4)
蓮花山 ⁽³⁾ Lianhuashan ⁽³⁾	雙體船 Catamaran	17	(-)	10.9%	(-)	7	(-)	4.4%	(-)
南沙 Nansha	雙體船 Catamaran	3	(-51.1)	10.1%	(-27.2)	†	(-50.8)	1.4%	(-29.2)
蛇口 Shekou	雙體船 Catamaran	731	(+6.8)	54.3%	(+2.7)	241	(+5.6)	18.2%	(+1.9)
深圳 Shenzhen	雙體船 Catamaran	179	(+30.9)	20.7%	(-25.2)	58	(+21.3)	6.4%	(-31.9)
中山 Zhongshan	雙體船 Catamaran	147	(+57.5)	28.4%	(+22.1)	83	(+35.4)	21.7%	(+37.1)
珠海 Zhuhai	雙體船 Catamaran	110	(+9.1)	23.9%	(+8.0)	91	(+13.8)	19.7%	(+12.6)
小計 - 內河港口 Sub-total - River Trade Ports		1 428	(+14.4)	36.2%	(-5.5)	564	(+11.6)	14.8%	(-5.6)
海天客運碼頭 SkyPier		1 969	(+2.4)	33.3%	(-12.4)	891	(+7.0)	17.7%	(-8.1)

註釋： (3) 蓮花山新航線於二零一五年七月一日啟航。
Note: The new Lianhuashan route commenced operation on 1 July 2015.

資料來源： 海事處客運碼頭組及香港國際機場客運碼頭服務有限公司
Data Sources: Ferry Terminals Section, Marine Department and Hong Kong International Airport Ferry Terminal Services Ltd.

表16
TABLE 16

2015 年按主要貨物裝卸地點分析貨櫃吞吐量
Container Throughput by Main Cargo Handling Location, 2015

千個標準貨櫃單位
'000 TEUs

類別 Category	貨櫃碼頭 Container Terminals			貨櫃碼頭以外 Other than Container Terminals			總計 Total
	遠洋 Ocean	內河 River	小計 Sub-total	遠洋 Ocean	內河 River	小計 Sub-total	
裝上 Loaded	(%)	(%)	(%)	(%)	(%)	(%)	(%)
載貨貨櫃 Laden Container	5 604 (-13.2)	1 227 (-11.0)	6 831 (-12.8)	392 (-17.9)	1 217 (+2.2)	1 608 (-3.5)	8 440 (-11.1)
空貨櫃 Empty Container	528 (-2.4)	194 (+0.6)	722 (-1.6)	28 (+14.5)	604 (-13.5)	632 (-12.6)	1 354 (-7.1)
小計 Sub-total	6 132 (-12.3)	1 421 (-9.5)	7 554 (-11.8)	419 (-16.3)	1 821 (-3.6)	2 240 (-6.3)	9 794 (-10.6)
卸下 Discharged							
載貨貨櫃 Laden Container	5 662 (-11.7)	1 343 (-10.2)	7 005 (-11.4)	641 (+10.0)	1 022 (-2.7)	1 663 (+1.8)	8 668 (-9.2)
空貨櫃 Empty Container	980 (-8.8)	34 (-11.9)	1 014 (-8.9)	33 (+32.8)	564 (-4.4)	598 (-2.9)	1 611 (-6.8)
小計 Sub-total	6 642 (-11.3)	1 377 (-10.3)	8 019 (-11.1)	674 (+10.9)	1 586 (-3.3)	2 260 (+0.5)	10 279 (-8.8)
合計 Overall							
載貨貨櫃 Laden Container	11 266 (-12.4)	2 570 (-10.6)	13 836 (-12.1)	1 033 (-2.6)	2 239 (-0.1)	3 271 (-0.9)	17 108 (-10.2)
空貨櫃 Empty Container	1 508 (-6.6)	228 (-1.5)	1 736 (-6.0)	61 (+23.8)	1 168 (-9.4)	1 229 (-8.1)	2 965 (-6.9)
總計 Total	12 774 (-11.8)	2 798 (-9.9)	15 572 (-11.5)	1 093 (-1.4)	3 407 (-3.5)	4 500 (-3.0)	20 073 (-9.7)

表 17
TABLE 17

2015 年按貨櫃碼頭以外的主要貨物裝卸地點分析裝卸的貨櫃
Containers Discharged/Loaded at Main Cargo Handling Locations Other than Container Terminals, 2015

千個標準貨櫃單位
'000 TEUs

主要貨物裝卸地點 (貨櫃碼頭以外) Main Cargo Handling Location (Other than Container Terminals)	遠洋 Ocean				內河 River				總計 Total	
	卸下 Discharged		裝上 Loaded		卸下 Discharged		裝上 Loaded			
	載貨貨櫃 Laden	空貨櫃 Empty	載貨貨櫃 Laden	空貨櫃 Empty	載貨貨櫃 Laden	空貨櫃 Empty	載貨貨櫃 Laden	空貨櫃 Empty	載貨貨櫃 Laden	空貨櫃 Empty
泊位和倉庫碼頭 Berths and Wharves	(%) 99 (+45.3)	(%) 13 (+64.6)	(%) 108 (+17.5)	(%) 11 (-22.5)	(%) 840 (-2.3)	(%) 516 (-4.3)	(%) 1 085 (+2.3)	(%) 485 (-15.0)	(%) 2 131 (+2.5)	(%) 1 024 (-9.5)
碇泊處 Anchorage	542 (+5.3)	21 (+18.9)	283 (-26.3)	17 (+66.1)	182 (-4.5)	49 (-5.3)	132 (+1.4)	119 (-6.7)	1 140 (-6.6)	205 (-0.7)
浮泡 Buoys	0 (-)	0 (-)	0 (-)	0 (-)	0 (-)	0 (-)	† (-85.1)	0 (-100.0)	† (-85.1)	0 (-100.0)
總計 Total	641 (+10.0)	33 (+32.8)	392 (-17.9)	28 (+14.5)	1 022 (-2.7)	564 (-4.4)	1 217 (+2.2)	604 (-13.5)	3 271 (-0.9)	1 229 (-8.1)

表 18
TABLE 18

2015 年按貨物種類及運輸方式劃分的裝卸港口貨物
Port Cargo Discharged/Loaded by Cargo Type and Mode of Transport, 2015

千公噸
'000 Tonnes

貨物種類 Cargo Type	海運 Seaborne		河運 River		總計 Total	
	卸下 Discharged	裝上 Loaded	卸下 Discharged	裝上 Loaded	卸下 Discharged	裝上 Loaded
	(%)	(%)	(%)	(%)	(%)	(%)
包裝散貨 Break bulk cargo	6 257 (-37.4)	510 (-23.2)	1 797 (+5.5)	2 950 (-4.5)	8 054 (-31.2)	3 460 (-7.8)
貨櫃貨物 Containerised cargo	69 762 (-11.6)	55 470 (-15.5)	23 325 (-8.1)	28 968 (-5.9)	93 086 (-10.8)	84 438 (-12.4)
無包裝液態散貨 Unpacked liquid bulk cargo	18 811 (+27.6)	216 (-12.7)	964 (+57.1)	278 (+28.5)	19 775 (+28.8)	494 (+6.5)
無包裝固態散貨 Unpacked solid bulk cargo	17 351 (-35.4)	209 (-18.8)	14 542 (-44.0)	15 149 (+19.6)	31 893 (-39.6)	15 359 (+18.8)
總計 Total	112 180 (-14.1)	56 406 (-15.6)	40 628 (-24.3)	47 345 (+1.3)	152 808 (-17.0)	103 751 (-8.6)

資料來源：政府統計處外發加工貿易及船務統計組
Data Source: Outward Processing and Shipping Statistics Section, Census and Statistics Department

表 19
TABLE 19

海港繫泊浮泡統計數字
Harbour Mooring Buoys Statistics

A. 浮泡數目 (年底數字) Number of Buoys (Figures as at End of the Year)	2014	2015
"A 級" 繫泊浮泡數目 No. of "A Class" mooring buoys	13	13
"B 級" 繫泊浮泡數目 No. of "B Class" mooring buoys	4	4

B. 使用情況 Usage	2014	2015
"A 級" 浮泡訂用日數 Days booked for "A Class" buoys	1 519	1 620
"B 級" 浮泡訂用日數 Days booked for "B Class" buoys	97	95
"A 級" 浮泡訂用百分率 Percentage of "A Class" buoys used based on booking	35.5%	37.2%
"B 級" 浮泡訂用百分率 Percentage of "B Class" buoys used based on booking	6.7%	6.6%
上述數字只顯示訂用情況，實際使用率則如下： Whilst the above figures are indicative of booking usage, the actual physical occupancy rates are as follows:		
"A 級" 浮泡 "A Class" buoys	24.0%	27.2%
"B 級" 浮泡 "B Class" buoys	4.3%	4.5%

C. 浮泡保養 Buoys Maintenance	2014	2015
按期保養的燈浮標 Light Buoys maintained	119	116
按期保養的養魚區浮泡 Mariculture Buoys maintained	178	178
按期保養的小型繫泊浮泡 Minor Mooring maintained	166	164
按期保養的大型繫泊浮泡 Major Mooring maintained	40	40
按期保養的 "A 級" 海港繫泊浮泡 "A Class" Harbour Mooring maintained	13	13
按期保養的 "B 級" 海港繫泊浮泡 "B Class" Harbour Mooring maintained	4	4

資料來源： (A) & (B) 海事處船隻航行監察中心
Data Sources: Vessel Traffic Centre, Marine Department
(C) 海事處港口後勤組
Port Logistics Section, Marine Department

表 20
TABLE 20

2015 年按分布地點分析香港私人繫泊設備數目
Number of Private Moorings Laid in Hong Kong by Location, 2015

地點	Location	私人繫泊設備 數目 Number of Private Moorings
香港仔南避風塘及銅鑼灣避風塘		
Aberdeen South Typhoon Shelter and Causeway Bay Typhoon Shelter		
香港仔南避風塘 (白沙灣)	Aberdeen South Typhoon Shelter (Pak Sha Wan)	1
香港仔南避風塘 (布廠灣)	Aberdeen South Typhoon Shelter (Po Chong Wan)	449
銅鑼灣避風塘	Causeway Bay Typhoon Shelter	186
小計	Sub-total	636
在所有其他避風塘及維多利亞港口界限以內的其他地方		
Other Typhoon Shelters and Elsewhere within the Limits of Victoria Port		
長洲避風塘	Cheung Chau Typhoon Shelter	11
荔枝角	Lai Chi Kok	3
新油麻地避風塘	New Yau Ma Tei Typhoon Shelter	16
新油麻地避風塘 (海堤對開海面)	New Yau Ma Tei Typhoon Shelter (Outside Breakwater)	33
油麻地碇泊處以北海面	North of Yau Ma Tei Anchorage	1
藍巴勒海峽避風塘 (海堤對開海面)	Rambler Channel Typhoon Shelter (Outside Breakwater)	6
三家村避風塘	Sam Ka Tsuen Typhoon Shelter	1
汀九	Ting Kau	62
土瓜灣	To Kwa Wan	4
青衣以北海面	Tsing Yi North	4
荃灣	Tsuen Wan	89
屯門避風塘	Tuen Mun Typhoon Shelter	7
小計	Sub-total	237

表 20 – 續
TABLE 20 – Cont'd

地點	Location	私人繫泊設備 數目 Number of Private Moorings
在香港水域內的其他地方		
Elsewhere in the Waters of Hong Kong		
香港仔西避風塘 (海堤對開海面)	Aberdeen West Typhoon Shelter (Outside Breakwater)	14
大灘海峽 赤徑口	Chek Keng Hau, Long Harbour	1
大嶼山 長沙欄	Cheung Sha Lan, Lantau Island	32
大嶼山 愉景灣	Discovery Bay, Lantau Island	6
南丫島 下尾灣 (電力站對開海面)	Ha Mei Wan, Lamma Island (Off Power Station)	4
西貢 白沙灣	Hebe Haven, Sai Kung	680
將軍澳	Junk Bay	1
西貢 滘西洲	Kau Sai Chau, Sai Kung	4
大灘海峽 高塘口	Ko Tong Hau, Long Harbour	1
南丫島 鹿洲灣	Luk Chau Wan, Lamma Island	1
熨波洲	Middle Island	98
大嶼山 稔樹灣	Nim Shue Wan, Lantau Island	15
北大嶼山	North Lantau	1
大埔 船灣海	Shuen Wan Hoi, Tai Po	40
赤柱正灘	Stanley Main Beach	4
大欖	Tai Lam	3
大埔 大美督	Tai Mei Tuk, Tai Po	32
西貢 大網仔	Tai Mong Tsai, Sai Kung	7
西貢 大網仔 (阿公灣)	Tai Mong Tsai, Sai Kung (A Kung Wan)	3
大潭港	Tai Tam Harbour	46
西貢 斬竹灣	Tsam Chuk Wan, Sai Kung	10
青衣以西海面	Tsing Yi West	2
西貢 早禾坑	Tso Wo Hang, Sai Kung	18
屯門避風塘 (海堤對開海面)	Tuen Mun Typhoon Shelter (Outside Breakwater)	6
黃竹角海 往灣	Wong Wan, Wong Chuk Kok Hoi	1
南丫島 榕樹灣	Yung Shue Wan, Lamma Island	2
小計	Sub-total	1 032
總計	Total	1 905

資料來源： 海事處私用繫泊分組
Data Source: Private Mooring Sub-unit, Marine Department

表 21
TABLE 21

碇泊處一覽 (截至 2015 年年底)
List of Anchorages (as at end 2015)

碇泊處 Anchorages	面積 (公頃) Area (hectares)
A. 檢疫及入境船隻碇泊處 Quarantine and Immigration Anchorages	
1. 東面檢疫及入境船隻碇泊處 Eastern Quarantine and Immigration Anchorage	35.1
2. 屯門入境船隻碇泊處 Tuen Mun Immigration Anchorage	89.9
3. 西面檢疫及入境船隻碇泊處 Western Quarantine and Immigration Anchorage	121.1
小計 Sub-total	246.1
B. 危險品碇泊處 Dangerous Goods Anchorages	
1. 將軍澳危險品碇泊處 Junk Bay Dangerous Goods Anchorage	28.9
2. 交椅洲危險品碇泊處 Kau Yi Chau Dangerous Goods Anchorage	288.2
3. 大鵬灣危險品碇泊處 Mirs Bay Dangerous Goods Anchorage	316.5
4. 糧船灣海危險品碇泊處 Rocky Harbour Dangerous Goods Anchorage	26.9
5. 南丫島南危險品碇泊處 South Lamma Dangerous Goods Anchorage	228.5
6. 荃灣危險品碇泊處 Tsuen Wan Dangerous Goods Anchorage	61.9
7. 西面危險品碇泊處 Western Dangerous Goods Anchorage	220.8
8. 危險品留用碇泊處 Reserved Dangerous Goods Anchorage	37.3
小計 Sub-total	1 209.0
C. 維修碇泊處 Servicing Anchorages	
1. 奇力 1 號碇泊處 Kellett Anchorage No.1	74.7
2. 奇力 2 號碇泊處 Kellett Anchorage No.2	230.4
3. 奇力 3 號碇泊處 Kellett Anchorage No.3	102.8
4. 馬灣碇泊處 Ma Wan Anchorage	138.4
5. 南丫島北碇泊處 North Lamma Anchorage	375.1
6. 南丫島西北碇泊處 North-west Lamma Anchorage	553.9
7. 半山石碇泊處 Pun Shan Shek Anchorage	352.1
8. 深水角 1 號碇泊處 Sham Shui Kok Anchorage No.1	72.6
9. 深水角 2 號碇泊處 Sham Shui Kok Anchorage No.2	35.6
10. 西面 1 號碇泊處 Western Anchorage No.1	310.6
11. 西面 2 號碇泊處 Western Anchorage No.2	278.7
12. 西面 3 號碇泊處 Western Anchorage No.3	272.4
13. 油麻地碇泊處 Yau Ma Tei Anchorage	105.0
小計 Sub-total	2 902.3

表 21 – 續
TABLE 21 – Cont'd

碇泊處 Anchorages		面積 (公頃) Area (hectares)
D. 領航特別碇泊處 Pilotage Special Anchorages		
1. 南丫島東南碇泊處	South-east Lamma Anchorage	285.5
2. 南丫島西南碇泊處	South-west Lamma Anchorage	228.4
3. 龍鼓水道碇泊處	Urmston Road Anchorage	190.0
小計	Sub-total	703.9
E. 遮蔽碇泊處 Sheltered Anchorages		
1. 柴灣貨物裝卸灣	Chai Wan Cargo Basin	11.2
2. 吉澳	Kat O	1.6
3. 沙頭角	Sha Tau Kok	0.6
4. 大澳	Tai O	4.0
5. 荃灣	Tsuen Wan	3.7
6. 熨波洲	Middle Island	6.9
7. 白沙灣	Pak Sha Wan (Hebe Haven)	84.0
8. 西貢	Sai Kung	4.3
9. 聖士提反灣	St. Stephen's Bay	1.3
10. 大美督	Tai Mei Tuk	12.3
11. 大潭港	Tai Tam Harbour	5.7
12. 汀九	Ting Kau	0.7
13. 斬竹灣	Tsam Chuk Wan	7.5
小計	Sub-total	143.8
總計	Total	5 205.1

資料來源： 海事處策劃、發展協調及港口保安部

Data Source: Planning, Development & Port Security Branch, Marine Department

表 22
TABLE 22

避風塘一覽 (截至 2015 年年底)
List of Typhoon Shelters (as at end 2015)

避風塘	Typhoon Shelters	面積 (公頃) Area (hectares)
1. 香港仔南避風塘	Aberdeen South Typhoon Shelter	26.1
2. 香港仔西避風塘	Aberdeen West Typhoon Shelter	34.2
3. 銅鑼灣避風塘	Causeway Bay Typhoon Shelter	10.6
4. 長洲避風塘	Cheung Chau Typhoon Shelter	50.0
5. 喜靈洲避風塘	Hei Ling Chau Typhoon Shelter	76.6
6. 觀塘避風塘	Kwun Tong Typhoon Shelter	33.8
7. 新油麻地避風塘	New Yau Ma Tei Typhoon Shelter	64.6
8. 藍巴勒海峽避風塘	Rambler Channel Typhoon Shelter	12.9
9. 三家村避風塘	Sam Ka Tsuen Typhoon Shelter	1.9
10. 筲箕灣避風塘	Shau Kei Wan Typhoon Shelter	17.2
11. 船灣避風塘	Shuen Wan Typhoon Shelter	10.3
12. 土瓜灣避風塘	To Kwa Wan Typhoon Shelter	14.8
13. 屯門避風塘	Tuen Mun Typhoon Shelter	56.8
14. 鹽田仔避風塘	Yim Tin Tsai Typhoon Shelter	9.2
總計	Total	419.0

備註： 只包括在二零一零年七月二十四日在政府憲報 (編號: L.N. 66/2010) 中所公布的避風塘。
Remark: Including only those typhoon shelters promulgated in the Government Gazette (L.N. 66 of 2010) on 24.7.2010.

資料來源： 海事處策劃、發展協調及港口保安部
Data Source: Planning, Development & Port Security Branch, Marine Department

表 23
TABLE 23

公眾貨物裝卸區一覽 (截至 2015 年年底)
List of Public Cargo Working Areas (as at end 2015)

公眾貨物裝卸區 Public Cargo Working Area	面積 (公頃) Area (hectares)	符合發牌條件之 停泊位長度 (米) Licensable Seafrontage (metres)
1. 柴灣公眾貨物裝卸區 Chai Wan Public Cargo Working Area	2.1	548
2. 新油麻地公眾貨物裝卸區 New Yau Ma Tei Public Cargo Working Area	6.8	1 212
3. 藍巴勒海峽公眾貨物裝卸區 Rambler Channel Public Cargo Working Area	4.1	1 040
4. 昂船洲公眾貨物裝卸區 Stonecutters Island Public Cargo Working Area	3.6	640
5. 屯門公眾貨物裝卸區 Tuen Mun Public Cargo Working Area	3.3	616
6. 西區公眾貨物裝卸區 Western District Public Cargo Working Area	4.0	880
總計 Total	23.9	4 936

資料來源： 海事處貨物裝卸組
Data Source: Cargo Handling Section, Marine Department

表 24
TABLE 24

垃圾收集、油污和檢控個案統計數字
Refuse Collection, Oil Pollution and Prosecution Statistics

A. 垃圾收集和油污事故
Refuse Collection and Oil Pollution Incident

	2014	2015
1. 從海港收集的垃圾 (公噸) Refuse collected from harbour (tonnes)	11 265	11 484
2. 從船舶收集的垃圾 (公噸) Refuse collected from vessels (tonnes)	4 352	4 337
3. 接報的疑似油污事故 (宗) Alleged oil pollution incidents reported (cases)	139	144

B. 檢控統計數字
Prosecution Statistics

罪行 Offence	陳詞／聆訊個案 No. of Cases Heard		定罪個案 No. of Cases Convicted		罰款 Fine (HK\$)	
	2014	2015	2014	2015	2014	2015
1. 違反碰撞規例 Breach of collision regulations	31	10	31	9	186,900	15,850
2. 違反牌照／准許證條件 Breach of licence/permit conditions	142	109	140	107	140,660	113,950
3. 未獲允許運載乘客／超額運載乘客 Carrying passengers without permission/excessive passengers	50	60	50	59	76,150	59,750
4. 不遵從指示 Failing to comply with direction	48	22	48	22	288,600	106,900
5. 沒有採取合理措施以確保受僱人在工程進行時戴著適當的安全頭盔 Failing to ensure the person employed to wear an appropriate safety helmet	43	30	43	30	22,250	19,550
6. 未獲允許讓該船隻緊靠著另一船舶而停放 Lying alongside another vessel without permission	58	39	58	39	62,090	34,500
7. 靠泊於已展示禁止船隻靠泊告示的岸壁／登岸梯級 Lying alongside seawall/landing steps prohibited by notice	6	4	6	4	5,800	3,100
8. 船上沒有合格船長／輪機員 No qualified master/engineer on board	235	230	227	221	222,900	199,300
9. 在沒有有效驗船證明書的情況下操作 Operating a vessel without valid certificate of survey	28	14	25	13	26,950	13,250
10. 沒持有有效證明書的人進行貨物處理 Person carrying out cargo handling without certificates	63	44	63	44	62,550	44,500
11. 超速行駛 Steaming in excessive speed	29	35	29	34	51,850	56,450
12. 使用沒有第三者風險保險的船隻 Using a vessel not insured against third party risk	51	49	49	48	72,600	62,700
13. 船隻未有領牌／並無有效牌照 Vessel was not licensed/did not have a valid licence	305	204	293	193	543,070	425,700
14. 其他海事罪行 Other marine offences	346	321	338	278	494,070	311,450
總計 Total	1 435	1 171	1 400	1 101	2,256,440	1,466,950

資料來源： (A) 海事處港口後勤組
(B) 海事處檢控小組

Data Sources: (A) Port Logistics Section, Marine Department
(B) Prosecution Unit, Marine Department

表 25
TABLE 25

按噸位等級分析香港持牌船隻 (截至 2015 年年底)
Hong Kong Licensed Vessels by Tonnage Classification (as at end 2015)

船隻類型 Vessel Type		60 淨噸及以下 60 Net Tons and Below	61 至 300 淨噸 61 - 300 Net Tons	300 淨噸以上 Over 300 Net Tons	總計 Total
第 I 類 Class I	(a) 渡輪船隻 Ferry Vessel	10	29	9	48
	(b) 水上食肆 Floating Restaurant	0	0	2	2
	(c) 小輪 Launch	179	52	1	232
	(d) 多用途船隻 Multi-purposes Vessel	10	7	2	19
	(e) 原始船隻 Primitive Vessel	69	1	0	70
	(f) 固定船隻 Stationary Vessel	0	0	0	0
	小計 Sub-total	268	89	14	371
第 II 類 Class II	(a) 起重機躉船 Crane Barge	0	1	8	9
	(b) 危險品運輸船 Dangerous Goods Carrier	1	10	18	29
	(c) 挖泥船 Dredger	0	4	1	5
	(d) 乾貨貨船 Dry Cargo Vessel	44	49	13	106
	(e) 非自航駁船 Dumb Lighter	20	53	456	529
	(f) 食油運輸船 Edible Oil Carrier	0	0	14	14
	(g) 平面工作躉 Flat-top Work Barge	16	24	25	65
	(h) 浮塢 Floating Dock	0	0	3	3
	(i) 水上工場 Floating Workshop	0	1	0	1
	(j) 開底躉船 Hopper Barge	0	2	33	35
	(k) 登岸平台 Landing Platform	42	1	0	43
	(l) 登岸浮躉 Landing Pontoon	20	25	13	58
	(m) 有毒液體物質運輸船 Noxious Liquid Substance Carrier	0	0	2	2
	(n) 石油運輸船 Oil Carrier	15	98	49	162
	(o) 領港船 Pilot Boat	19	0	0	19

表 25 – 續
TABLE 25 – Cont'd

船隻類型 Vessel Type		60 淨噸及以下 60 Net Tons and Below	61 至 300 淨噸 61 - 300 Net Tons	300 淨噸以上 Over 300 Net Tons	總計 Total
第 II 類 Class II (續) (Cont'd)	(p) 特別用途船隻 Special Purpose Vessel	2	1	3	6
	(q) 固定船隻 Stationary Vessel	109	24	5	138
	(r) 交通船 Transportation Boat	30	0	0	30
	(s) 交通舢舨 Transportation Sampan	81	0	0	81
	(t) 拖船 Tug	66	102	0	168
	(u) 供水船 Water Boat	13	7	0	20
	(v) 工作船 Work Boat	294	9	0	303
	小計 Sub-total	772	411	643	1 826
第 III 類 Class III	(a) 運魚船 Fish Carrier	15	11	0	26
	(b) 漁船舢舨 Fishing Sampan	1 997	0	0	1 997
	(c) 漁船 Fishing Vessel	631	1 399	0	2 030
	(d) 舷外機開敞式舢舨 Outboard Open Sampan	2 575	0	0	2 575
	小計 Sub-total	5 218	1 410	0	6 628
第 IV 類 Class IV	(a) 機械輔助帆船 Auxiliary Powered Yacht	N.A.	N.A.	N.A.	776
	(b) 遊樂船 Cruiser	N.A.	N.A.	N.A.	2 614
	(c) 開敞式遊樂船 Open Cruiser	N.A.	N.A.	N.A.	6 066
	小計 Sub-total	N.A.	N.A.	N.A.	9 456
總計	Total	6 258⁽¹⁾	1 910⁽¹⁾	657⁽¹⁾	18 281⁽²⁾

註釋：
Notes: (1) 不包括第 IV 類持牌船隻的數字。
Not including Class IV licensed vessels.

(2) 已包括 40 艘閑置船隻，但不包括 4 艘根據《商船(本地船隻)(住家船隻)規例》(第 548A 章)領牌的住家船隻。
Including 40 laid-up vessels, but excluding 4 dwelling vessels which are licensed under the Merchant Shipping (Local Vessels) (Dwelling Vessels) Regulation (Cap. 548A).

資料來源：
Data Source: 海事處牌照及關務組
Licensing and Port Formalities Section, Marine Department

表 26
TABLE 26

船舶安全監督統計數字
Ship Safety Statistics

A. 貨船安全統計數字 Cargo Ships Safety Statistics	2014	2015
香港註冊貨船品質審查／檢驗 Hong Kong Registered Cargo Ships Quality Checked/Inspected <ol style="list-style-type: none"> 1. 品質審查的註冊貨船數目 No. of quality checks on Hong Kong registered cargo ships 2. 品質檢驗和稽核貨船數目 No. of flag state quality control ship inspections and company visits 3. 審核船體、機械和設備圖則數目 No. of plans examined in respect of hull, machinery and equipment 	<p>2 138</p> <p>106</p> <p>200</p>	<p>2 247</p> <p>115</p> <p>246</p>
貨船設備安全證明書 Cargo Ship Safety Equipment Certificate (SEC) <ol style="list-style-type: none"> 1. 所簽發的豁免證明書數目 No. of exemption certificates issued 2. 應其他國家機關要求而檢驗的外來船舶，以簽發設備安全證明書 Foreign ships surveyed at the request of other national authorities for the issue of SEC 	<p>653</p> <p>0</p>	<p>631</p> <p>0</p>
貨船無線電安全證明書 Cargo Ship Safety Radio Certificate (SRC) <ol style="list-style-type: none"> 1. 所簽發的豁免證明書數目 No. of exemption certificates issued 2. 應其他國家機關要求而檢驗的外來船舶，以簽發無線電安全證明書 Foreign ships surveyed at the request of other national authorities for the issue of SRC 	<p>101</p> <p>0</p>	<p>109</p> <p>0</p>
其他 Others <ol style="list-style-type: none"> 1. 所簽發的《海員培訓、發證和值班標準國際公約》最低安全配員證明書 Standards of Training, Certification and Watchkeeping Minimum Safe Manning Certificate issued 2. 對構造安全、設備安全、無線電安全證明書的監察，包括中期檢驗 Safety Construction, Equipment and Radio Certificates monitored (including intermediate surveys) 3. 對國際載重線證明書的監察，包括定期檢驗 International Load Line Certificate monitored (including periodic surveys) 4. 對國際防止油污證明書、油污損害民事責任保險證明書或其他保證證明書及燃油污染損害民事責任保險證明書或其他經濟擔保證明書的監察－續期、年度/中期檢驗 International Oil Pollution Prevention (IOPP) Certificate, Certificate of Insurance or Other Financial Security in Respect of Civil Liability for Oil Pollution Damage and Certificate of Insurance or Other Financial Security in Respect of Civil Liability for Bunker Oil Pollution Damage monitored (including renewal, annual/intermediate surveys) 5. 對新船公司所作的國際安全管理稽核 International Safety Management (ISM) audits of new shipping companies 6. 其他檢驗 (例如合格證明書等) Other surveys (e.g. Certificates of Fitness etc.) 	<p>717</p> <p>1 595</p> <p>567</p> <p>3 483</p> <p>21</p> <p>0</p>	<p>522</p> <p>1 604</p> <p>535</p> <p>3 671</p> <p>18</p> <p>0</p>

表 26 – 續
TABLE 26 – Cont'd

B. 客船安全統計數字 Passenger Ships Safety Statistics	2014	2015
乘客定額及船舶安全證明書 Passenger and Ship Safety Certificates		
1. 客船安全證明書 – 國際航線 Passenger Ship Safety Certificate (PSSC) – International Voyage	0	0
2. 客船安全證明書 – 短途國際航線 Passenger Ship Safety Certificate (PSSC) – Short International Voyage	1	1
3. 高速船安全證明書 – 內河航限 High Speed Craft Safety Certificate (HSCSC) – River Trade Limits	72	63
4. 延長客船安全證明書有效期 Extensions to PSSC	0	0
5. 高速船安全證明書檢驗船舶總數 Total no. of vessels surveyed for HSCSC	72	63
6. 受檢驗的客船無線電裝置 Passenger ship radio installations surveyed	72	63
7. 所簽發的載重線證明書數目 No. of Load Line Certificates issued	13	8
8. 所簽發的載重線豁免證明書數目 No. of Load Line Exemption Certificates issued	13	8
9. 所簽發的國際防止油污證明書及增補數目 No. of IOPP Certificates with Supplement issued	13	10
10. 所簽發的國際防止油污豁免證明書數目 No. of IOPP Exemption Certificates issued	2	0
11. 所簽發的最低安全配員證明書數目 No. of Minimum Safe Manning Certificates issued	3	0
12. 對船公司所作的國際安全管理稽核 ISM audits of shipping companies	6	4
13. 對船舶所作的國際安全管理稽核 ISM audits of ships	14	27
14. 所簽發的國際安全管理稽核符合證明數目 No. of ISM Document of Compliance issued	1	1
15. 所簽發的國際安全管理稽核安全管理證明書數目 No. of ISM Safety Management Certificates issued	10	17
16. 所簽發的臨時國際安全管理稽核安全管理證明書數目 No. of Interim ISM Safety Management Certificates issued	2	0
雜項檢查，圖則審核和設備 Miscellaneous Inspection, Plans Approval and Equipment		
1. 審核客船船體、機械和設備圖則數目 No. of plans examined for hull, machinery and equipment of passenger ships	78	59
2. 簽發檢查證明書、雜項檢驗／檢查數目 No. of certificates of inspection issued, miscellaneous surveys/inspections	165	181

表 26 – 續
TABLE 26 – Cont'd

C. 港口國監督統計數字 Port State Control Statistics	2014	2015
<p>在香港特別行政區港口內進行的港口國監督檢查： Port State Control Inspections in the Harbour of the Hong Kong Special Administrative Region:</p>		
<p>1. 在履行身為港口國監督委員而對《東京諒解備忘錄》應有的責任下，受港口國監督檢查的個別外來船舶數目 No. of individual foreign ships inspected under the obligation to Tokyo Memorandum of Understanding (MOU), as a member Port State of the Committee</p>	830	777
<p>– 遠洋船舶 <i>Ocean vessels</i></p>	736	697
<p>– 沿岸船舶 <i>Coastal vessels</i></p>	94	80
<p>2. 對外來船舶進行港口國監督檢查 (包括複檢) 總數 Total no. of Port State Control inspections carried out for foreign ships, including re-inspections</p>	909	838
<p>3. 被扣留在港的低於安全標準的船舶數目 No. of sub-standard ships detained in Hong Kong</p>	64	59

資料來源： (A) 海事處貨船安全組
Data Sources: Cargo Ships Safety Section, Marine Department

(B) 海事處客船安全組
Passenger Ships Safety Section, Marine Department

(C) 海事處港口國監督組
Port State Control Section, Marine Department

表 27
TABLE 27

本地船隻安全／海事工業安全／海事意外統計數字
Local Vessels Safety/Marine Industrial Safety/Marine Accidents Statistics

I. 船舶的檢驗和檢查統計 Statistics on Surveys and Inspections of Vessels	2014	2015
A. 給本地船隻簽發／批註的證明書／適合聲明／紀錄等 Certificates/Declarations/Records etc. Issued/Endorsed to Local Vessels <ol style="list-style-type: none"> 1. 簽發／批註乾舷勘定證明書數目 No. of Freeboard Assignment Certificates issued/endorsed 2. 簽發安全設備檢驗紀錄數目 No. of Survey Records of Safety Equipment issued 3. 簽發／批註載重線證明書數目 No. of Load Line Certificates issued/endorsed 4. 簽發噸位丈量記錄數目 No. of Records of Tonnage Measurement issued 5. 簽發／批註散裝有毒液體物質的防污證明書數目 No. of Pollution Prevention Certificates for the Carriage of Noxious Liquid Substances in Bulk issued/endorsed 6. 簽發適合運載危險品聲明數目 No. of Declarations of Fitness for the Carriage of Dangerous Goods issued 7. 簽發香港防止油類污染證明書數目 No. of Hong Kong Oil Pollution Prevention Certificates issued 8. 簽發／批註香港防止空氣污染證明書數目 No. of Hong Kong Air Pollution Prevention Certificates issued/endorsed 9. 給本地船隻簽發驗船證明書數目 No. of Certificates of Survey issued to Local Vessels <ul style="list-style-type: none"> – 第 I 類 Class I – 第 II 類 Class II – 第 III 類 Class III – 第 IV 類 Class IV 		
總計 Total	3 218	3 310
B. 審批圖則／文件 Plans/Documents Examined <ol style="list-style-type: none"> 1. 船隻傾斜測試及穩性確定數目 No. of Vessels Inclining tested and Stability Information assessed 2. 審核本地船隻的船體、機械和設備圖則數目 No. of Plans of Hull, Machinery and Equipment examined for Local Vessels 		
總計 Total	2 563	2 968

表 27 – 續
TABLE 27 – Cont'd

I. 船舶的檢驗和檢查統計 (續) Statistics on Surveys and Inspections of Vessels (Cont'd)	2014	2015
C. 檢驗本地船隻數目 (包括新船、現有船隻、抽查船隻及被扣留的船隻) Local Vessels Inspected (New, Existing, Spot-check Vessels and Detained Vessels) <ol style="list-style-type: none"> 1. 執行其他政府部門要求檢查的船隻數目 No. of Inspections of Vessels for Other Government Departments 2. 為簽發證明書而接受檢驗的本地船隻數目 No. of local vessels inspected for issuing certificates <ul style="list-style-type: none"> 完成首次檢驗而新領牌的船隻數目 No. of Newly Licensed Vessels after Completing Initial Survey 在本港檢驗本地船隻的數目 No. of Local Vessels Inspected Locally 	<p>33</p> <p>2 522</p> <p>436</p> <p>2 086</p>	<p>59</p> <p>2 394</p> <p>230</p> <p>2 164</p>
總計 Total	2 555	2 453
D. 檢驗本地船隻次數 (包括新船、現有船隻、抽查船隻及被扣留的船隻) Inspection Visits Made to Local Vessels (New, Existing, Spot-check Vessels and Detained Vessels) <ol style="list-style-type: none"> 1. 檢驗碰撞後破損的本地船隻次數 No. of Inspection Surveys of Damaged Local Vessels after Collision 2. 抽查及複驗本地船隻次數 No. of Spot Checks and Audit Checks on Local Vessels 3. 海外檢驗本地船隻次數 No. of Overseas Visits for Inspection of Local Vessels 4. 本地船隻在本港首次及定期檢查次數 No. of Initial and Periodical Inspection Visits Made Locally to Local Vessels 	<p>9</p> <p>136</p> <p>86</p> <p>3 177</p>	<p>11</p> <p>161</p> <p>71</p> <p>3 327</p>
總計 Total	3 408	3 570
E. 舉辦安全講座及研討會 Talks and Seminars Conducted	0	0

資料來源： 海事處本地船舶安全組

Data Source: Local Vessels Safety Section, Marine Department

表 27 – 續
TABLE 27 – Cont'd

II. 檢查正在進行工程的船舶及調查海上工業意外事故等 Inspections of Vessels Engaged in Works and Investigations of Marine Industrial Accidents etc.	2014	2015
A. 貨櫃檢查數目 No. of Containers Inspected	9 290	7 670
B. 海事工業安全檢查 (不包括貨櫃檢查) Marine Industrial Safety Inspections (not including inspection of containers)		
1. 檢查正在修理的船舶 Inspections of Vessels Undergoing Repair	530	429
2. 檢查海事工程船舶 Inspections of Vessels Engaged in Marine Construction	127	164
3. 檢查遠洋船裝卸貨物工具 Cargo Gear Inspections on Ocean-going Vessels	188	172
4. 檢查遠洋船裝卸貨物 Stevedoring Inspections on Ocean-going Vessels	1 988	1 583
5. 檢查駁船裝卸貨物工具 Cargo Gear Inspections on Lighters	456	450
6. 檢查駁船裝卸貨物 Stevedoring Inspections on Lighters	840	1 162
總計 Total	4 129	3 960
C. 海事工業意外的調查及查詢數目 Marine Industrial Accidents Investigated/Inquired		
1. 調查致命的非海事工業意外 Non-marine Industrial Fatal Accidents investigated	0	0
2. 調查致命的海事工業意外 Marine Industrial Fatal Accidents investigated	9	1
3. 調查嚴重意外 Serious Accidents investigated	0	0
4. 調查嚴重意外 (無傷亡) Serious Accidents (No Casualty) investigated	0	0
5. 查詢非嚴重意外 Non-serious Accidents inquired	103	120
總計 Total	112	121

表 27 – 續
TABLE 27 – Cont'd

II. 檢查正在進行工程的船舶及調查海上工業意外事故等 (續) Inspections of Vessels Engaged in Works and Investigations of Marine Industrial Accidents etc. (Cont'd)	2014	2015
D. 發生海事工業意外的數目 Marine Industrial Accidents Occurred <ol style="list-style-type: none"> 1. 修船意外總數 Total Ship Repair Accidents 2. 裝卸貨物意外總數 Total Cargo Handling Accidents 3. 海事工程意外總數 Total Marine Construction Accidents 		
總計 Total	136	169
E. 簽發修船許可證／轉介檢控小組的個案／發出警告信的數目 Letters of Permission to Undertake Repairs Issued/Cases Referred to Prosecutions Unit/Warning Letters Issued <ol style="list-style-type: none"> 1. 簽發修船許可證 Letters of Permission to Undertake Repairs issued 2. 轉介檢控小組的個案 Cases referred to Prosecutions Unit 3. 發出警告信 Warning Letters issued 		
總計 Total	3 672	4 392
F. 海事工業安全的宣傳及教育 Promotion and Education on Marine Industrial Safety <ol style="list-style-type: none"> 1. 發出安全指令 Safety Directions issued 2. 出版或修訂的安全小冊子／單張／海報／貼紙數目 No. of Safety Pamphlets/Leaflets/Posters/Stickers published or revised 3. 出版或修訂的安全指南／工作守則數目 No. of Safety Guides/Codes of Practice published or revised 4. 安全講座及研討會的舉辦數目 No. of Safety Talks and Seminars conducted 5. 到訪船舶推廣安全 Safety Promotion Visits to Vessels 		
總計 Total	1 468	1 139

資料來源： 海事處海事工業安全組
Data Source: Marine Industrial Safety Section, Marine Department

表 27 – 續
TABLE 27 – Cont'd

III. 香港註冊船舶的損失數目 ⁽¹⁾ Loss of Vessels Registered in Hong Kong ⁽¹⁾		
損失船舶數目 Number Lost	2014	2015
		0

註釋： (1) 指因遇險而導致損失的船舶。

Note: Refers to loss of vessels due to casualty or accident.

資料來源： 海事處船舶註冊及商船海員管理處

Data Source: Shipping Registry and Mercantile Marine Office, Marine Department

IV. 2015 年海上意外事故統計 Marine Accidents Statistics in 2015								
意外事故類別 Type of Accident	香港水域範圍以內 ⁽¹⁾ Within Hong Kong Waters ⁽¹⁾				香港水域範圍以外 ⁽²⁾ Outside Hong Kong Waters ⁽²⁾			
	宗數 No. of Cases	死亡人數 Persons Killed	受傷人數 Persons Injured	失蹤人數 Persons Missing	宗數 No. of Cases	死亡人數 Persons Killed	受傷人數 Persons Injured	失蹤人數 Persons Missing
相撞 Collision	147	0	15	0	28	0	2	0
擱淺／觸礁 Grounding/Stranding	26	0	11	0	21	0	0	0
沉沒／入水 Sinking /Foundering	29	1	3	0	0	0	0	0
火警／爆炸 Fire/Explosion	19	0	8	0	11	1	4	0
翻沉／傾斜 Capsized/Listing	17	1	3	0	1	0	0	0
接觸 Contact	41	0	127	0	22	1	0	0
其他 Others	40	0	4	0	23	0	0	5
總計 Total	319	2	171	0	106	2	6	5

註釋： (1) 包括所有船舶 (如香港註冊及外國註冊船舶、本地領牌船隻、內河船隻、沿海船隻、政府船舶等等) 的意外及傷亡數字。

Notes: Including accidents and casualties figures of all vessels (such as Hong Kong registered and foreign registered vessels, local licensed vessels, river trade vessels, coastal vessels, government launches, etc.).

(2) 只包括在香港註冊或領牌的船舶之意外及傷亡數字。

Including accidents and casualties figures of Hong Kong registered vessels or local licensed vessels only.

資料來源： 海事處海事意外調查組

Data Source: Marine Accident Investigation Section, Marine Department

表 27 – 續
TABLE 27 – Cont'd

V. 海上意外事故調查 Marine Accident Investigation	2014	2015
調查意外事故 《船舶及港口管制條例》、 《商船(本地船隻)條例》及 《商船條例》	34	24
初步研訊 《商船條例》	0	0
領港研訊 《領港條例》	0	0
海事法庭	0	0
調查委員會	0	0
對調查委員會裁決提出上訴	0	0

資料來源： 海事處海事意外調查組

Data Source: Marine Accident Investigation Section, Marine Department

表 28
TABLE 28

海員發證、註冊和僱用統計數字
Seafarers' Certification, Registration and Employment Statistics

A. 遠洋合格證明書 Seagoing Certificates of Competency		2014		2015	
		申請人數 Number of Applications	及格人數 Number of Successes	申請人數 Number of Applications	及格人數 Number of Successes
1. 商船船長及 甲板高級船員	Master Mariner and Deck Officer				
一級甲板高級船員 (商船船長)	Deck Officer Class 1 (Master Mariner)				
筆試	Written Examination	4	2	7	4
口試	Oral Examination	13	4	11	4
其他	Other Services	20	20	23	20
二級甲板高級船員	Deck Officer Class 2				
筆試	Written Examination	27	7	36	11
口試	Oral Examination	14	6	22	4
其他	Other Services	12	12	3	2
三級甲板高級船員	Deck Officer Class 3				
筆試	Written Examination	59	15	304	112
口試	Oral Examination	28	7	79	17
訊號	Signal	39	11	80	13
其他	Other Services	23	23	13	12
小計	Sub-total	239	107	578	199
2. 輪機師	Marine Engineer Officer				
一級輪機師	Marine Engineer Officer – Class 1				
筆試	Written Examination	12	0	3	2
口試	Oral Examination	9	0	10	3
其他	Other Services	17	17	6	6
二級輪機師	Marine Engineer Officer – Class 2				
筆試	Written Examination	14	1	53	20
口試	Oral Examination	17	4	30	12
其他	Other Services	14	14	19	19
三級輪機師	Marine Engineer Officer – Class 3				
口試	Oral Examination	22	8	27	16
其他	Other Services	39	39	21	19
小計	Sub-total	144	83	169	97
總計	Total	383	190	747	296

表 28 – 續
TABLE 28 – Cont'd

B. 內河航行合格證明書 River Trade Certificates of Competency		2014		2015	
		申請人數 Number of Applications	及格人數 Number of Successes	申請人數 Number of Applications	及格人數 Number of Successes
1. 甲板高級船員	Deck Officer				
一級甲板高級船員	Deck Officer Class 1				
筆試	Written Examination	0	0	0	0
口試	Oral Examination	12	3	11	3
其他	Other Services	25	25	24	23
二級甲板高級船員	Deck Officer Class 2				
筆試	Written Examination	5	2	14	4
口試	Oral Examination	9	2	12	0
其他	Other Services	4	4	7	7
三級甲板高級船員	Deck Officer Class 3				
筆試	Written Examination	10	5	32	12
口試	Oral Examination	19	6	21	2
訊號	Signal	22	6	37	7
其他	Other Services	21	21	18	17
小計	Sub-total	127	74	176	75
2. 輪機師	Marine Engineer Officer				
一級輪機師	Marine Engineer Officer – Class 1				
筆試	Written Examination	0	0	0	0
口試	Oral Examination	0	0	0	0
其他	Other Services	4	4	8	8
二級輪機師	Marine Engineer Officer – Class 2				
筆試	Written Examination	18	3	19	0
口試	Oral Examination	19	4	18	2
其他	Other Services	10	10	25	25
三級輪機師	Marine Engineer Officer – Class 3				
口試	Oral Examination	13	5	6	3
其他	Other Services	18	18	6	6
小計	Sub-total	82	44	82	44
總計	Total	209	118	258	119

表 28 – 續
TABLE 28 – Cont'd

C.1 本地合格證明書 Local Certificates of Competency		2014		2015	
		申請人數 Number of Applications	及格人數 Number of Successes	申請人數 Number of Applications	及格人數 Number of Successes
1. 船長	Coxswain				
一級船長	Coxswain Grade 1				
筆試	Written Examination	6	6	7	2
其他	Other Services	115	115	91	89
二級船長	Coxswain Grade 2				
筆試	Written Examination	126	33	103	53
口試	Oral Examination	83	3	154	17
其他	Other Services	260	259	278	272
三級船長	Coxswain Grade 3				
筆試	Written Examination	465	150	400	145
口試	Oral Examination	0	0	0	0
其他	Other Services	192	192	326	313
小計	Sub-total	1 247	758	1 359	891
2. 輪機操作員	Engine Operator				
一級輪機操作員	Engine Operator Grade 1				
其他	Other Services	267	266	187	187
二級輪機操作員	Engine Operator Grade 2				
筆試	Written Examination	63	26	77	26
其他	Other Services	1	1	0	0
三級輪機操作員	Engine Operator Grade 3				
筆試	Written Examination	362	122	432	144
其他	Other Services	96	95	159	156
小計	Sub-total	789	510	855	513
總計	Total	2 036	1 268	2 214	1 404

表 28 – 續
TABLE 28 – Cont'd

C.2 遊樂船隻操作人合格證明書 Pleasure Vessel Operator Certificate of Competency		2014		2015	
		申請人數 Number of Applications	及格人數 Number of Successes	申請人數 Number of Applications	及格人數 Number of Successes
遊樂船隻 一級操作人	Pleasure Vessel Operator Grade 1				
筆試	Written Examination	141	24	140	32
口試	Oral Examination	165	19	224	39
其他	Other Services	292	290	271	269
遊樂船隻 二級操作人	Pleasure Vessel Operator Grade 2				
筆試	Written Examination	8 055	4 036	7 970	3 613
口試	Oral Examination	0	0	0	0
其他	Other Services	314	310	342	340
總計	Total	8 967	4 679	8 947	4 293

D. 部門考試 Departmental Examinations		2014		2015	
		考試人數 Examined	及格人數 Passed	考試人數 Examined	及格人數 Passed
一級本地船長	Coxswain Grade 1	1	1	0	0
二級本地船長	Coxswain Grade 2	182	94	114	35
三級本地船長	Coxswain Grade 3	93	49	53	21
一級輪機操作員	Engine Operator Grade 1	0	0	0	0
二級輪機操作員	Engine Operator Grade 2	44	26	14	9
三級輪機操作員	Engine Operator Grade 3	81	29	87	28
總計	Total	401	199	268	93

表 28 – 續
TABLE 28 – Cont'd

E. 其他考試／評定 Other Examinations/Assessments	2014		2015	
	申請人數 Number of Applications	及格人數 Number of Successes	申請人數 Number of Applications	及格人數 Number of Successes
救生艇筏熟練操作證明書 Proficiency in Survival Craft Certificate	0	0	0	0
高級水手／水手證明書 Able Bodied Seaman/Efficient Deck Hand Certificate	0	0	0	0
船舶保安員專業證書 Certificate of Proficiency (CoP) as Ship Security Officer	25	25	28	28
指定保安職責海員專業證書的符合證明 Statement of Compliance on CoP as Security Training for Seafarers with Designated Security Duties	113	113	63	63
保安意識訓練專業證書的符合證明 Statement of Compliance on CoP as Security Awareness Training	49	49	17	17
類型級別證明書 (考試、重新生效及夜航批准) Type Rating Certificate (Examination, Revalidation and Night Service Approval)	419	419	214	206
香港執照 Hong Kong Licence	19 145	19 145	20 755	20 612
本地豁免 Local Exemption	108	108	40	40
總計 Total	19 859	19 859	21 117	20 966

備註： 其他 – 包括有關證明書批註、豁免、重新生效等事宜的申請。

Remark: Other services – including applications for endorsement, exemption and revalidation etc.

表 28 – 續
TABLE 28 – Cont'd

F. 截至 2015 年 12 月 31 日為止的海員註冊人數 Seafarer's Registration as at 31.12.2015			
根據第478章註冊的海員 Seafarers Registered Under Cap. 478	第一部 Part I	第二部 Part II	總計 Total
		4 425	1 578

G. 2015 年所簽發的僱用登記簿數目 Employment Registration Books Issued, 2015		
續發簿 Subsequent Books		0
補發簿 Replacement Books		0
新海員簿 New Entrants Books		152
總計 Total		152

H. 2015 年海員就業統計數字 Seafarers Employment Statistics, 2015				
期間 Period	僱用海員方式 Seafarers Employed Through			總計 Total
	核准公司名冊 Permitted Company Roster	總名冊 General Roster	緊急僱用/ 重新僱用等 Emergency/ Re-employment, etc.	
2015年第一季 1 st Quarter 2015	60	9	1	70
2015 年第二季 2 nd Quarter 2015	57	8	79	144
2015 年第三季 3 rd Quarter 2015	99	8	657	764
2015 年第四季 4 th Quarter 2015	77	2	0	79
總計 Total	293	27	737	1 057

表28 – 續
TABLE 28 – Cont'd

I. 船公司及職位統計數字 Companies and Posts Statistics	
截至 2015 年12月31日為止在商船海員管理處登記僱用本港註冊海員的船公司數目 Shipping companies listed with Mercantile Marine Office to employ Hong Kong registered seafarers as at 31.12.2015	28
2015 年按船公司所交周年報表而編製的本港海員就業職位 Posts filled by Hong Kong seafarers as compiled from annual returns submitted by shipping companies, 2015	1 499

J. 2015 年訂立和終結的香港註冊船舶船員協議條款 Crew Agreements of Hong Kong Registered Ships Opened and Closed, 2015				
	訂立的協議 Agreements Opened		終結的協議 Agreements Closed	
	在香港境內 In Hong Kong	在香港境外 Outside Hong Kong	在香港境內 In Hong Kong	在香港境外 Outside Hong Kong
船員協議條款數目 No. of agreements	68	1 285	70	1 335
總計 Total	1 353		1 405	

K. 香港註冊船舶僱用和解職的海員人次⁽¹⁾ Number of Employment and Discharge of Seafarers by Hong Kong Registered Ships⁽¹⁾		
	2014	2015
僱用的海員人次 No. of employment of seafarers	97 920	81 180
解職的海員人次 No. of discharge of seafarers	88 200	84 300

註釋： (1) 數字包括在香港以外地方註冊的海員。
Note: Figures include seafarers registered outside Hong Kong.

資料來源： (A) – (E) 海事處海員發證組
Data Sources: Seafarers' Certification Section, Marine Department
(F) – (K) 海事處註冊及商船海員管理處
Shipping Registry and Mercantile Marine Office, Marine Department

表 29
TABLE 29

香港註冊船舶統計數字
Statistics on Ships Registered in Hong Kong

A. 2015 年船舶數目和噸位
Number of Ships and Tonnage, 2015

	船舶數目 No. of Ships	淨噸位 ⁽¹⁾ Net Tonnage ⁽¹⁾	總噸位 ⁽¹⁾ Gross Tonnage ⁽¹⁾
(i) 2015 年 12 月 31 日船舶註冊概況 On register as at 31.12.2015	2 477	56 965 452	102 293 022
(ii) 2015 年註冊的船舶 Ships Registered in the year of 2015	343	10 742 371	20 609 089
(iii) 2015 年取消註冊的船舶 Ships De-registered in the year of 2015	238	6 016 595	11 102 941

註釋： (1) 淨噸位及總噸位以每單位 100 立方呎計算。
Note: Net and gross tonnages are in units of 100 cubic feet.

B. 按總噸位分析於 2015 年年底在香港註冊的船舶數目
Ships Registered in Hong Kong Analysed by Gross Tonnage as at end 2015

總噸位 Gross Tonnage	船舶數目 No. of Ships
< 500	161
500 - 999	51
1 000 - 1 999	45
2 000 - 2 999	16
3 000 - 3 999	18
4 000 - 4 999	26
5 000 - 9 999	255
10 000 - 14 999	77
15 000 - 19 999	191
20 000 - 24 999	214
25 000 - 29 999	217
30 000 - 34 999	186
35 000 - 39 999	144
40 000 - 44 999	238
45 000 - 49 999	38
50 000 - 59 999	117
60 000 - 69 999	41
70 000 - 79 999	5
80 000 - 89 999	58
90 000 - 99 999	148
100 000 - 149 999	105
≥ 150 000	126
總計 Total	2 477

表 29 – 續
TABLE 29 – Cont'd

C. 按船舶種類分析於 2015 年在香港註冊及取消註冊的船舶數目
Ship Registered and De-registered in Hong Kong by Ship Type, 2015

船舶類型 Type of Ship	註冊船舶 Ship Registered		取消註冊船舶 Ship De-registered	
	船舶數目 No. of Ships	總噸位 Gross Tonnage	船舶數目 No. of Ships	總噸位 Gross Tonnage
散裝貨船 Bulk Carrier	140	5 625 274	107	4 694 316
化學品船 Chemical Tanker	3	43 330	6	48 562
集裝箱船 Container	112	8 411 213	67	4 657 438
渡輪 Ferry	0	0	0	0
挖泥船 Dredger	0	0	0	0
氣體運輸船 Gas Carrier	8	576 797	3	140 603
一般貨船 General Cargo Ship	17	336 313	16	186 491
高速船 High Speed Craft	0	0	1	10
躉船 Lighter and Barge	3	158 941	3	10 984
油輪 Oil Tanker	31	2 626 017	17	452 557
礦沙／散貨／ 油類混用船 Ore/Bulk/Oil (OBO) Carrier	15	2 819 118	6	910 026
其他油輪 Other Tanker	0	0	1	641
滾裝卸式船 Roll On/Roll Off	1	8 652	0	0
拖船 Tug	3	2 511	2	682
遊艇 Yacht	10	924	9	632
總計 Total	343	20 609 089	238	11 102 941

資料來源： 海事處船舶註冊處
Data Source: Shipping Registry, Marine Department

表 30
TABLE 30

政府船隊統計數字
Government Fleet Statistics

項目	Item	2014	2015
1. 開支預算總額 ⁽¹⁾ (百萬元)	Total expenditure estimate ⁽¹⁾ (\$M)	474.4	483.8
2. 截至 12 月 31 日的政府船隊科員工總數 (包括船員)	Total number of staff in Government Fleet Division (GFD) (including crew) as at 31 December	497	488
3. (i) 建成及交收的政府新船 (ii) 建造中的政府新船 (iii) 已完成的政府新船計劃 (iv) 正進行中的政府新船計劃	(i) Government new vessels built and delivered (ii) Government new vessels under construction (iii) Government new vessel projects completed (iv) Government new vessel projects in progress	45 26 13 11	43 18 13 6
4. 新船招標／報價	Tenders/Quotations called for new vessels	15	10
5. 新船合約	Contracts awarded for new vessels	14	8
6. 已完成的合約及購買規格書	Contracts and procurement specifications completed	29	18
7. (i) 政府船舶總數 a. 大型機動船舶 b. 大型高速船 c. 其他雜類型船舶 (ii) 配備海事處人員的政府船舶 (iii) 海事處可供調配船員的時數率 (%) (iv) 已處理報廢的政府船舶	(i) Total number of vessels a. Major mechanised vessels b. High speed craft (large type) c. Other miscellaneous class vessels (ii) Government craft manned by the Marine Department (MD) (iii) MD crew staff time available for deployment (%) (iv) Government craft disposed	829 95 13 721 43 86.0 0	828 95 13 720 43 86.2 18
8. (i) 大型機動船舶及大型高速船的可提供使用率 (ii) 大型機動船舶及大型高速船的平均數目 (iii) 船舶維修後首次試航成功率 (iv) 政府船隊維修保養服務使用者滿意率 (%)	(i) Availability of major mechanised vessels and high speed craft (large type) (%) (ii) Average number of major mechanised vessels and high speed craft (large type) (iii) Vessel seatrial successful rate in first attempt after repair maintenance service (%) (iv) User satisfaction level on Government fleet repair maintenance service (%)	87.1 108 93.0 99.1	86.4 108 96.6 98.7
9. 大型機動船舶及大型高速船 (包括他們的機動子艇) 保養費總額 (百萬元)	Total maintenance cost of major mechanised vessels and high speed craft (large type) (including their mechanised daughter boats) (\$M)	179.3	154.8
10. 大型機動船舶及大型高速船 (包括他們的機動子艇) 平均保養費 (百萬元)	Average maintenance cost of major mechanised vessels and high speed craft (large type) (including their mechanised daughter boats) (\$M)	1.7	1.4
11. (i) 船舶維修定期保養合約安排總數 a. 根據合約保養的船舶數目 b. 根據合約保養的主機數目 (ii) 採購機械零件的定期合約數目	(i) Total number of vessel maintenance term contract (TC) arrangements a. Number of vessels maintained under TC b. Number of main engines repaired under TC (ii) Number of TC for procurement of machinery spare parts	46 112 265 16	44 116 265 12
12. 配備海事處人員的政府船舶肇事個案 (i) 肇事政府船舶數目 (ii) 工傷意外傷亡數目 a. 船塢員工 b. 船員	Accidents involving Government craft manned by MD (i) Number of Government vessels involved (ii) Number of casualties in industrial accidents a. Dockyard staff b. Crew	7 3 5	2 1 3
13. 參加職業安全及健康 (職安健) 課程的政府船塢人員人數 (i) 職業安全健康局舉辦課程 (ii) 政府船隊科工業安全組舉辦的課程 (iii) 其他職安健課程	Number of attendees of Government Dockyard to Occupational Safety and Health (OSH) training courses (i) Organised by the OSH Council (ii) Organised by the Industrial Safety Section, GFD (iii) Other OSH courses	32 228 123	34 179 119

註釋： (1) 指財政年度內的數字 (由當年四月一日至下年三月三十一日)。

Note: Figures refer to those in financial year (i.e. from 1 April of current year to 31 March of next year).

資料來源： 海事處政府船隊科
Data Source: Government Fleet Division, Marine Department

表 31
TABLE 31

政府船舶所屬部門及可用率情況 (截至 2015 年年底)
Departmental Ownership and Availabilities of Government Vessels (as at end 2015)

船舶類型 Vessel Type	所屬部門 Ownership														
	AFCED 漁農自然護理署	AMS 醫療輔助隊	CAS 民眾安全服務隊	CEDD 土木工程拓展署	CSD 懲教署	C&ED 香港海關	EPD 環境保護署	FSD 消防處	DH 衛生署	HKPF 香港警務處	Imm D 入境事務處	LCSD 康樂及文化事務署	MD 海事處	WSD 水務署	總計 Total
機動子艇及泳灘艇 Mechanised Daughter Boats & Beach Craft	0	0	0	0	0	7	0	9	0	19	0	137	1	0	173
浮橋物／泳灘浮台及浮筏 Floating Bridge Structures/Beach Platforms & Rafts	0	0	0	0	0	0	0	0	0	0	0	382	0	0	382
機動及非機動充氣式橡皮艇 Mechanised and Non-mechanised Inflatable Boats	1	1	11	0	0	2	1	11	0	6	0	1	0	2	36
駁船 Lighters	0	0	0	0	0	0	0	1	0	6	0	0	21	0	28
小型機動船及小艇 Minor Mechanised Vessels & Dinghies	14	0	0	0	0	0	0	10	0	11	0	0	6	4	45
大型機動船舶 Major Mechanised Vessels	3	0	0	3	2	7	1	9	1	36	7	0	26	0	95
大型高速船 High Speed Craft (large type)	0	0	0	0	0	3	0	0	0	10	0	0	0	0	13
中型高速船 High Speed Craft (medium type)	8	0	0	0	0	2	0	2	0	39	0	0	5	0	56
總計 Total	26	1	11	3	2	21	2	42	1	127	7	520	59	6	828
大型機動船及大型高速船平均可提供使用率 Average Availability of Major Mechanised Vessels & High Speed Craft (large type) (%)	85.3	-	-	90.9	88.5	87.4	92.4	87.1	88.6	84.0	86.8	-	88.9	-	86.4

資料來源： 海事處政府船隊科

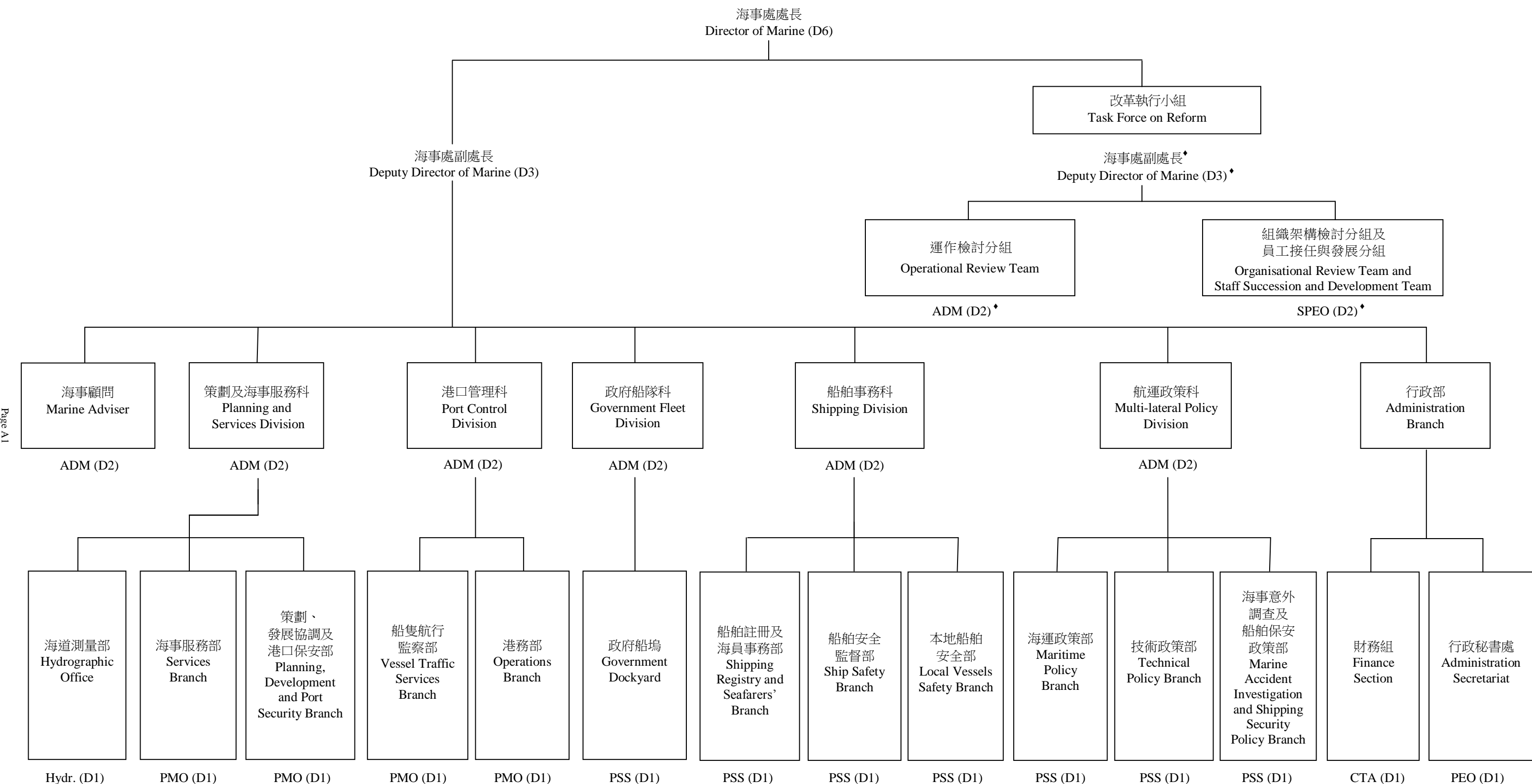
Data Source: Government Fleet Division, Marine Department

附 錄

Appendices

附錄 A
APPENDIX A

海事處組織架構圖(截至 2015 年年底)
Organisation Chart of the Marine Department (as at end 2015)



圖例： ADM = 海事處助理處長 Assistant Director of Marine
 Legend: PMO = 首席海事主任 Principal Marine Officer
 PSS = 首席驗船主任 Principal Surveyor of Ships
 Hydr. = 海道測量師 Hydrographer
 SPEO = 高級首席行政主任 Senior Principal Executive Officer
 PEO = 首席行政主任 Principal Executive Officer
 CTA = 總庫務會計師 Chief Treasury Accountant
 D6 = 首長薪級第六點 (如此類推) Directorate Level 6 (and so on)

*Supernumerary post 編外職位

附錄 B
APPENDIX B

海事處的編制和實際員額 (截至 2015 年年底)
Establishment and Strength of the Marine Department (as at end 2015)

		編制 Establishment	實際員額 Strength
首長級人員 Directorate Officers			
海事處處長	Director of Marine (D6)	1	0
首長級甲級政務官	Administrative Officer Staff Grade A (D6)	0	1
海事處副處長	Deputy Director of Marine (D3)	1	1
首長級乙級政務官	Administrative Officer Staff Grade B (D3)	1 [♦]	0
首長級丙級政務官	Administrative Officer Staff Grade C (D2)	0	1
海事處助理處長	Assistant Director of Marine (D2)	6 + 1 [♦]	6
高級首席行政主任	Senior Principal Executive Officer (D2)	1 [♦]	1
首席海事主任	Principal Marine Officer (D1)	4	5
首席驗船主任	Principal Surveyor of Ships (D1)	7	7
首席行政主任	Principal Executive Officer (D1)	1	1
總庫務會計師	Chief Treasury Accountant (D1)	1	1
海道測量師	Hydrographer (D1)	1	1
部門職系 Departmental Grade			
高級海事主任	Senior Marine Officer	20 + 1 [♦]	20
海事主任	Marine Officer	38 + 2 [♦]	21
海事監督	Marine Controller	13	13
助理海事監督	Assistant Marine Controller	42 + 2 [♦]	31
高級船舶安全主任	Senior Shipping Safety Officer	1	1
船舶安全主任	Shipping Safety Officer	7	6
高級驗船主任	Senior Surveyor of Ships	17 + 1 [♦]	15
驗船主任	Surveyor of Ships	33	26
高級助理船務主任	Senior Assistant Shipping Master	29 + 2 [♦]	28
一級海事督察	Marine Inspector I	95 + 3 [♦]	94
二級海事督察	Marine Inspector II	105	99
輔航設備監督	Superintendent of Aids to Navigation	1	1
助理輔航設備監督	Assistant Superintendent of Aids to Navigation	2	2

附錄 B - 續
APPENDIX B - Cont'd

		編制 Establishment	實際員額 Strength
總驗船督察	Chief Ship Inspector	2	2
高級驗船督察	Senior Ship Inspector	11	9
驗船督察	Ship Inspector	25 + 1 [♦]	20
助理驗船督察	Assistant Ship Inspector	14	18
小輪大偈	Launch Mechanic	1	1
一般職系 General Grade			
高級政務主任	Senior Administrative Officer	1	0
政務主任	Administrative Officer	0	1
總管理參議主任	Chief Management Services Officer	1	1
高級管理參議主任	Senior Management Services Officer	2	2
二級管理參議主任	Management Services Officer II	2	2
高級統計師	Senior Statistician	1	0
統計師	Statistician	0	2
一級統計主任	Statistical Officer I	1	1
二級統計主任/ 見習統計主任	Statistical Officer II/ Student Statistical Officer	3	3
系統經理	Systems Manager	3	1
一級系統分析/ 程序編製主任	Analyst/Programmer I	6	4
二級系統分析/ 程序編製主任	Analyst/Programmer II	5	9
高級庫務會計師	Senior Treasury Accountant	1	1
庫務會計師	Treasury Accountant	3	3
高級會計主任	Senior Accounting Officer	1	1
一級會計主任	Accounting Officer I	1	1
二級會計主任	Accounting Officer II	3	3
總行政主任	Chief Executive Officer	2	2
高級行政主任	Senior Executive Officer	4	3
一級行政主任	Executive Officer I	8	7
二級行政主任	Executive Officer II	9	11

附錄 B - 續
APPENDIX B - Cont'd

		編制 Establishment	實際員額 Strength
高級法定語文主任	Senior Official Languages Officer	1	1
一級法定語文主任	Official Languages Officer I	2	2
二級法定語文主任	Official Languages Officer II	2	2
高級電子工程師	Senior Electronics Engineer	1	1
電子工程師／ 助理電子工程師	Electronics Engineer/ Assistant Electronics Engineer	2	2
高級土地測量師	Senior Land Surveyor	1	1
土地測量師／ 助理土地測量師	Land Surveyor/ Assistant Land Surveyor	3	3
電子督察	Electronics Inspector	1	1
助理空氣調節督察	Assistant Air-Conditioning Inspector	1	1
首席測量主任 (工程)	Principal Survey Officer (Engineering)	1	1
高級測量主任 (工程)	Senior Survey Officer (Engineering)	4	4
測量主任 (工程)／ 見習測量主任 (工程)	Survey Officer (Engineering)/ Survey Officer Trainee (Engineering)	11	11
首席技術主任 (製圖)	Principal Technical Officer (Cartographic)	1	1
高級技術主任 (製圖)	Senior Technical Officer (Cartographic)	4	4
技術主任 (製圖)／ 見習技術主任 (製圖)	Technical Officer (Cartographic)/ Technical Officer Trainee (Cartographic)	6	7
高級文書主任	Senior Clerical Officer	6 + 1 [♦]	6
文書主任	Clerical Officer	30 + 1 [♦]	28
助理文書主任	Assistant Clerical Officer	76	78
文書助理	Clerical Assistant	120	118
辦公室助理員	Office Assistant	8	5
高級物料供應主任	Senior Supplies Officer	1	0
物料供應主任	Supplies Officer	1	1
助理物料供應主任	Assistant Supplies Officer	1	2

附錄 B - 續
APPENDIX B - Cont'd

		編制 Establishment	實際員額 Strength
高級物料供應員	Senior Supplies Supervisor	1	1
一級物料供應員	Supplies Supervisor I	2	2
二級物料供應員	Supplies Supervisor II	11 + 1*	12
助理物料供應員	Supplies Assistant	3 + 1*	4
物料供應服務員	Supplies Attendant	2	2
高級私人秘書	Senior Personal Secretary	1	1
一級私人秘書	Personal Secretary I	9	6
二級私人秘書	Personal Secretary II	18	17
機密檔案室助理	Confidential Assistant	1	1
繕校員	Calligraphist	2	2
打字員	Typist	3	3
汽車司機	Motor Driver	4	4
共通職系 Common Grade			
總技術主任	Chief Technical Officer	2 + 1*	2
高級電氣督察	Senior Electrical Inspector	2	2
電氣督察	Electrical Inspector	4	3
助理電氣督察	Assistant Electrical Inspector	2	1
高級機械督察	Senior Mechanical Inspector	7	7
機械督察	Mechanical Inspector	10	10
助理機械督察	Assistant Mechanical Inspector	5	4
一級監工	Works Supervisor I	12	8
二級監工	Works Supervisor II	8	9
小輪船員督導員	Launch Crew Supervisor	3	3
高級小輪船長	Senior Launch Master	56 + 3*	58
小輪船長	Launch Master	46 + 2*	37
小輪助理員	Launch Assistant	213 + 3*	192

附錄 B - 續
APPENDIX B - Cont'd

		編制 Establishment	實際員額 Strength
高級技工	Senior Artisan	38 + 3*	39
技工	Artisan	71	37
丈量員	Chainman	4	2
產業看管員	Property Attendant	1	0
二級工人	Workman II	33	23
總計	Total	1 393 + 31*	1 262

* 編外職位
Supernumerary post

附錄 C
APPENDIX C

2015 年海事處訓練組舉辦的課程
Training Courses Conducted by Training Section, Marine Department in 2015

課程名稱 Course Title	學期 Duration	參加學員* Target Participants*	班級數目 Number of Classes	學員數目 Number of Participants
1. 香港水域自動雷達標繪儀和高速船雷達課程 Automatic Radar Plotting Aid (ARPA) and High Speed Craft Radar Course for Hong Kong Waters	3 days	C&E, HKPF, MD	1	8
2. 基本小型船舶操縱技術課程 Basic Boat Handling Skills Course	5 days	C&E, FSD, MD	1	6
3. 民安隊海上油污訓練課程 CAS Oil Pollution Course	2 days	CAS	2	33
4. 全球海上遇險及安全系統 – 限用操作員證書課程 Global Maritime Distress and Safety System (GMDSS) – Restricted Operator's Certificate Course	5 days	MI II, OFCA	2	12
5. 康樂及文化事務署海上油污訓練課程 LCSD Oil Pollution Course	1 day	LCSD	1	16
6. 海事督察訓練課程 – 甲部 Marine Inspector Training Course – Part A	30 days	MI II	3	23
7. 海事督察訓練課程 – 乙部 Marine Inspector Training Course – Part B	50 days	MI II	1	7
8. 海事主任基本訓練課程 Marine Officer Elementary Training Course	5 days	MO	1	2
9. 領港員模擬船操縱課程 Pilotage Simulation Course	3 days	HKPA	2	6
10. 香港水域雷達操作員課程 Radar Operator Course for Hong Kong Waters	7 days	C&E, FSD, HKPF	2	19
11. 限用無線電話資格證書(短距離)課程 Restricted Certificate of Competency in Radiotelephony (Short Range) Course	3 days	LA	1	6
12. 船舶排放黑煙 (Ringelmann Chart) 應用課程 Ringelmann Chart Application Course on Dark Smoke Emission	0.5 day	MI I, MI II	1	10
13. 船舶模擬器維修課程 Ship Simulator Maintenance Course	3 days	PCCW	1	10
14. 船舶交通服務操作員基本培訓課程 (新入職助理海事監督課程) VTS Operator Basic Training Course (For new AMC)	93 days	AMC	1	5
15. 船舶交通服務操作員深造課程 – 海外人士 VTS Operator Enhancement Course – Overseas Participants	8 days	BJ MSA & Macao MWB	1	13
16. 船舶交通服務監督員培訓課程 VTS Supervisor Training Course	3 days	AMC, MO	1	6
總計 Total			22	182

附錄 C – 續
APPENDIX C – Cont'd

註釋：* 參加海事處在二零一五年舉辦的訓練課程的機構及職位：

Note: List of organisations/posts participated in the training courses conducted by the Marine Department in 2015:

機構	Organisation	縮寫 Abbreviation
北京海事局和澳門海事及水務局	Beijing Maritime Safety Administration of the People's Republic of China and Macao Marine and Water Bureau	BJ MSA & Macao MWB
民眾安全服務隊	Civil Aid Service	CAS
香港海關	Customs and Excise Department	C&E
消防處	Fire Services Department	FSD
香港領港會	Hong Kong Pilots Association	HKPA
香港警務處	Hong Kong Police Force	HKPF
康樂及文化事務署	Leisure and Cultural Services Department	LCSD
海事處	Marine Department	MD
香港通訊事務管理局	Office of the Communications Authority	OFCA
電訊盈科	Pacific Century Cyber Works Limited	PCCW

職位	Post	縮寫 Abbreviation
助理海事監督	Assistant Marine Controller	AMC
小輪助理員	Launch Assistant	LA
一級海事督察	Marine Inspector I	MI I
二級海事督察	Marine Inspector II	MI II
海事主任	Marine Officer	MO

附錄 D
APPENDIX D

2015 年海事處訪客
Visitors of the Marine Department, 2015

海事處於二零一五年接待了以下訪客：

During the year of 2015, the Marine Department hosted the following visitors:

編號 No.	訪問日期 Date of Visit	機構／代表 Organisation/Representative
1.	23.3.2015	日本船主協會、日本海事中心及日本貿易振興機構 (香港) Japanese Shipowners Association, Japan Maritime Centre and Japan External Trade Organization (HK)
2.	9.4.2015	摩洛哥王國駐華大使館和丹吉爾地中海專門組織 Embassy of the Kingdom of Morocco and Tangier Mediterranean Special Agency
3.	20.4.2015 – 21.4.2015	深圳海事局船員管理處 Seafarers' Management Department, Shenzhen Maritime Safety Administration of the People's Republic of China
4.	22.4.2015	紐西蘭基督城利特爾頓港行政總裁和代表團 Chief Executive of Lyttelton Port of Christchurch, New Zealand and Delegation
5.	28.4.2015	廣東海事局 Guangdong Maritime Safety Administration
6.	4.5.2015 – 15.5.2015	新加坡海事及港務管理局 (港口國監督檢查員交流計劃) Maritime and Port Authority of Singapore (PSCO Exchange Programme)
7.	5.5.2015	英國赫爾大學 University of Hull, the United Kingdom
8.	7.5.2015	交通部水運科學研究院 (中國) Waterborne Transportation Institution of the People's Republic of China
9.	3.6.2015	深圳海事局 Shenzhen Maritime Safety Administration
10.	16.6.2015	廣西壯族自治區港航管理局 Guangxi Zhuang Autonomous Region Port and Shipping Administration Bureau
11.	24.6.2015	深港電子航海以及海事意外調查交流研討 Technical Exchange on Electronic Navigation and Marine Accident Investigation with Shenzhen Maritime Safety Administration
12.	4.7.2015	孔昭華議員辦事處、海員之家和海事彙報研究會 The Office of District Councilor Derek Hung Chiu-wah, The Mariners' Club and Maritime Affairs Research Association
13.	6.7.2015	中國發展雜誌社 China Development Magazine
14.	2.8.2015 – 4.8.2015	澳門海事及水務局 (港口國監督檢查員交流計劃) Macao Marine and Water Bureau (PSCO Exchange Program)
15.	21.8.2015	南安普頓大學 University of Southampton
16.	31.8.2015 – 2.9.2015	澳門海事及水務局 (港口國監督檢查員交流計劃) Macao Marine and Water Bureau (PSCO Exchange Program)

附錄 D – 續
APPENDIX D - Cont'd

編號 No.	訪問日期 Date of Visit	機構／代表 Organisation/Representative
17.	2.9.2015	台北城市科技大學 Taipei Chengshih University of Science and Technology
18.	11.9.2015	中國杯賽事組委會 Organisation Committee of the China Cup
19.	8.10.2015	重要基礎設施保安協調中心 Critical Infrastructure Security Coordination Centre
20.	13.10.2015	南韓京畿平澤港灣公社 Gyeonggi Pyeongtaek Port Corporation, The Republic of Korea
21.	15.10.2015	新加坡民防局 Singapore Civil Defence Force
22.	26.10.2015 – 30.10.2015	廣東海事局 Guangdong Maritime Safety Administration
23.	29.10.2015	深圳市交通運輸委員會 Transport Commission of Shenzhen Municipality
24.	2.11.2015	中國引航協會 China Maritime Pilots Association
25.	6.11.2015	德國漢堡水上警察局局長 Head of Waterways and Port Police, Hamburg, Germany
26.	16.11.2015 – 24.11.2015	歐洲海事安全局 European Maritime Safety Agency
27.	16.11.2015 – 25.11.2015	中國海事局 Maritime Safety Administration of the People's Republic of China
28.	16.11.2015 – 25.11.2015	澳門海事及水務局 Macao Marine and Water Bureau
29.	17.11.2015	德國漢堡水上警察局局長 Head of Waterways and Port Police, Hamburg, Germany
30.	18.11.2015	深圳海事局 Shenzhen Maritime Safety Administration
31.	18.11.2015	南韓仁川港灣公社 Incheon Port Authority, The Republic of Korea
32.	20.11.2015	中國海事局 Maritime Safety Administration of the People's Republic of China
33.	2.12.2015	澳門海事及水務局 Macao Marine and Water Bureau
34.	3.12.2015	臺灣金門縣港務處 Kinmen Harbor Division, Kinmen, Taiwan
35.	15.12.2015	中國漁業船舶檢驗局和澳門海事及水務局 Register of Fishing Vessel of the People's Republic of China and Macao Marine and Water Bureau

附錄 E
APPENDIX E

2015 年新訂海事法例
New Maritime Legislations, 2015

二零一五年一月一日至二零一五年十二月三十一日期間通過的海事及航運法例列載如下：

The following maritime and shipping legislations were enacted during the year under review (1.1.2015 - 31.12.2015):

法例名稱 Title	參考編號 Reference No.
2015 年港口管制 (公眾貨物裝卸區) 令 Port Control (Public Cargo Working Area) Order 2015	2015 年第 28 號法律公告 L.N. 28 of 2015
2015 年港口管制 (公眾貨物裝卸區) 令 (生效日期) 公告 Port Control (Public Cargo Working Area) Order 2015 (Commencement) Notice	2015 年第 190 號法律公告 L.N. 190 of 2015
2015 年商船 (防止及控制污染) (費用) (修訂) 規例 Merchant Shipping (Prevention and Control of Pollution) (Fees) (Amendment) Regulation 2015	編號 : L.N. 53/2015 L.N. 53 of 2015
商船 (控制船舶有害防污底系統) 規例 Merchant Shipping (Control of Harmful Anti-Fouling Systems on Ships) Regulation	編號 : L.N. 54/2015 L.N. 54 of 2015
商船 (防止廢物污染) 規例 Merchant Shipping (Prevention of Pollution by Garbage) Regulation	編號 : L.N. 74/2015 L.N. 74 of 2015
商船 (防止廢物污染) 規例 (廢除) 規例 Merchant Shipping (Prevention of Pollution by Garbage) Regulation (Repeal) Regulation	編號 : L.N. 75/2015 L.N. 75 of 2015
2015 年商船 (防止污水污染) (修訂) 規例 Merchant Shipping (Prevention of Pollution by Sewage) (Amendment) Regulation 2015	編號 : L.N. 108/2015 L.N. 108 of 2015

附錄 F
APPENDIX F

2015 年輔航設備
Aids to Navigation, 2015

A. 使用中的輔航設備
Aids to Navigation in Use

輔航設備	Aids to Navigation	截至 2015 年 12 月 31 日 As at 31.12.2015
1. 燈浮標	Light Buoy	122
2. 燈航標	Light Beacon	422
3. 雷達應答標	Racon	1
4. 霧角	Fog Horn	7

B. 本年新設的輔航裝置
New Aids Established during the Year

沒有	Nil
----	-----

C. 本年拆除的輔航裝置
Aids Discontinued during the Year

1. 啟德 3 KT 3	這個燈浮標於 2015 年 11 月 4 日永久終止服務。 The lighted buoy was permanently withdrawn from service on 4.11.2015.
2. 啟德 4 KT 4	這個燈浮標於 2015 年 11 月 4 日永久終止服務。 The lighted buoy was permanently withdrawn from service on 4.11.2015.

D. 本年遭損毀的輔航裝置
Aids Damaged during the Year

下列燈浮標及燈航標遭損毀，航標燈熄滅。
The light buoys and light beacons listed below were damaged and unlit.

月份	Month	名稱	Name
2 月	February	繫泊浮泡 A17	Mooring Buoy A17
		北航 1	Northern 1
4 月	April	青衣南 1	Tsing Yi South 1
5 月	May	青衣西	Tsing Yi West
7 月	July	北航 3	Northern 3
		筲箕灣 2	Shau Kei Wan 2
		將軍澳 4	Tseung Kwan O 4
		東涌橋 2	Tung Chung Bridge 2

附錄 F – 續
APPENDIX F – Cont'd

D. 本年遭損毀的輔航裝置 (續)
Aids Damaged during the Year (Cont'd)

下列燈浮標及燈航標遭損毀，航標燈熄滅。(續)
The light buoys and light beacons listed below were damaged and unlit. (Cont'd)

月份	Month	名稱	Name
8 月	August	長洲 B	Cheung Chau B
		港澳 1	MFT 1
11 月	November	南丫電力 5	P 5
12 月	December	長洲 A	Cheung Chau A

E. 本年改進的輔航裝置
Aids Reprovisioned during the Year

1. 下列燈航標已換上全新現代化器材，用以提高光達距離。
The light beacons listed below were upgraded with modern equipment for better luminous range.

月份	Month	名稱	Name
1 月	January	索罟灣碼頭	Sok Kwu Wan Pier
		黃泥排	Wong Nei Pai
2 月	February	長洲西灣碼頭	Cheung Chau Sai Wan Pier
3 月	March	佛堂門	Fat Tong Mun
		堅尼地城東	Kennedy Town Dolphin E
		堅尼地城西	Kennedy Town Dolphin W
		銀礦灣	Silver Mine Bay
		大澳 2	Tai O 2
4 月	April	鹽田仔 1	Yim Tin Tsai 1
5 月	May	香港仔南 1	Aberdeen South 1
		香港仔南 2	Aberdeen South 2
		白芒碼頭	Pak Mong Pier
8 月	August	石牛洲	Shek Ngau Chau
9 月	September	望東灣碼頭	Mong Tung Wan Pier
10 月	October	企人石	Kei Yan Shek
11 月	November	大利橋北 7	Tai Lei Bridge North 7
		大利橋北 8	Tai Lei Bridge North 8
		大利橋南 5	Tai Lei Bridge South 5
		大利橋南 6	Tai Lei Bridge South 6
		大利橋南 8	Tai Lei Bridge South 8

附錄 F – 續
APPENDIX F – Cont'd

E. 本年改進的輔航裝置 (續)
Aids Reprovisioned during the Year (Cont'd)

1. 下列燈航標已換上全新現代化器材，用以提高光達距離。(續)
The light beacons listed below were upgraded with modern equipment for better luminous range.
(Cont'd)

月份	Month	名稱	Name
12 月	December	長洲 B	Cheung Chau B
		稔灣	Nim Wan
		筲箕灣 B	Shau Kei Wan B

2. 下列燈航標已由全新現代化器材取代，用以提高其可靠性。
The light beacons listed below were replaced with modern equipment for higher reliability.

月份	Month	名稱	Name
1 月	January	后海灣 E	Deep Bay E
		后海灣 F	Deep Bay F
2 月	February	科大	U.S.T.
3 月	March	繫泊浮泡 A17	Mooring Buoy A17
		北角新村碼頭	Pak Kok San Tsuen Pier
4 月	April	仔仔排	Ma Tsai Pai
5 月	May	鯉魚門	Lei Yue Mun
6 月	June	大利橋南 12	Tai Lei Bridge South 12
8 月	August	長洲 B	Cheung Chau B
		沙洲碼頭 1	Sha Chau Jetty 1
		沙洲碼頭 2	Sha Chau Jetty 2
9 月	September	屯門入境	IMM TM
		筲箕灣 2	Shau Kei Wan 2
11 月	November	沙螺灣	Sha Lo Wan

附錄 F – 續
APPENDIX F – Cont'd

E. 本年改進的輔航裝置 (續)

Aids Reprovisioned during the Year (Cont'd)

3. 下列燈航標已更換太陽能電池，用以提高航標的可靠性。

The solar batteries of the light beacons listed below were renewed in order to increase reliability.

月份	Month	名稱	Name
1 月	January	中航	Central
		赤角頭	Chek Kok Tau
		后海灣 E	Deep Bay E
		后海灣 F	Deep Bay F
		青洲	Green Island
		橋咀排	Kiu Tsui Pai
		龍山排	Lung Shan Pai
		模達灣新碼頭	Mo Tat Wan New Pier
		北角新村碼頭	Pak Kok San Tsuen Pier
		醉酒灣	Rambler Channel
		海上救援東局 2	Sea Rescue East Station 2
		船灣 2	Shuen Wan 2
		索罟灣新碼頭	Sok Kwu Wan New Pier
		索罟灣碼頭	Sok Kwu Wan Pier
		藍塘 2	TCS 2
黃泥排	Wong Nei Pai		
2 月	February	長洲西灣碼頭	Cheung Chau Sai Wan Pier
		佛堂門	Fat Tong Mun
		鹿頸碼頭	Luk Keng Pier
		銀洲	Ngan Chau
		蒲苔	Po Toi
		沙螺灣碼頭	Sha Lo Wan Pier
		沙橋頭碼頭	Sha Kiu Tau Pier
		青馬橋墩 2	Tsing Ma Bridge Pier 2
		圓角	Yuen Kok
3 月	March	佛堂門	Fat Tong Mun
		喜靈洲 8	Hei Ling Chau 8
		堅尼地城東	Kennedy Town Dolphin E
		堅尼地城西	Kennedy Town Dolphin W
		鹿頸	Luk Keng
		大澳 2	Tai O 2

附錄 F – 續
APPENDIX F – Cont'd

E. 本年改進的輔航裝置 (續)
Aids Reprovisioned during the Year (Cont'd)

3. 下列燈航標已更換太陽能電池，用以提高航標的可靠性。(續)
The solar batteries of the light beacons listed below were renewed in order to increase reliability.
(Cont'd)

月份	Month	名稱	Name
4 月	April	杉排	Cham Pai
		長洲石	Cheung Chau Rock
		大水坑碼頭	Tai Shui Hang Pier
		鹽田仔 1	Yim Tin Tsai 1
5 月	May	東芝麻灣	East Chi Ma Wan
		鯉魚門	Lei Yue Mun
		蘆荻灣碼頭	Lo Tik Wan Pier
		沙洲碼頭	Sha Chau Pier
7 月	July	佛堂洲	Fat Tong Chau
		北丫碼頭	Pak A Pier
8 月	August	雙仙角 (導引燈)	Gemini Point (Leading Light)
		下棚 (交通燈)	Ha Pang (Traffic Light)
		海尾灣 (交通燈)	Hoi Mei Wan (Traffic Light)
		龍麟咀	Lung Lun Tsui
		港澳 1	MFT 1
		西北馬灣 (交通燈)	NW Ma Wan (Traffic Light)
		南丫電力 6	P 6
		沙洲 (導引燈)	Sha Chau (Leading Light)
		石牛洲	Shek Ngau Chau
		燈籠洲	Tang Lung Chau
9 月	September	爛角咀發電廠	Black Point Power Station
		望東灣碼頭	Mong Tung Wan Pier
		海上救援西局 3	Sea Rescue West Station 3
		筲箕灣 2	Shau Kei Wan 2
10 月	October	喜靈洲 2	Hei Ling Chau 2
		鹽田仔 2	Yim Tin Tsai 2
11 月	November	南丫電力 5	P 5
		沙橋頭碼頭	Sha Kiu Tau Pier

附錄 F – 續
APPENDIX F – Cont'd

E. 本年改進的輔航裝置 (續)
Aids Reprovisioned during the Year (Cont'd)

3. 下列燈航標已更換太陽能電池，用以提高航標的可靠性。(續)
The solar batteries of the light beacons listed below were renewed in order to increase reliability.
(Cont'd)

月份	Month	名稱	Name
12 月	December	黃金海岸 4	Gold Coast 4
		喜靈	Hei Ling
		喜靈洲 5	Hei Ling Chau 5
		馬灣涌碼頭	Ma Wan Chung Pier
		稔灣	Nim Wan
		北角消防局西碼頭	North Point FSD West Pier
		海上救援西局 4	Sea Rescue West Station 4
		汀九橋墩 4	Ting Kau Bridge Pier 4
		西馬灣	West Ma Wan

4. 下列燈航標的太陽能發電板數目已增加，用以提高航標的可靠性。
The number of solar panel of the light beacon listed below was increased to enhance reliability.

月份	Month	名稱	Name
4 月	April	香港仔西	Aberdeen West
5 月	May	汾流角	Fan Lau Kok
6 月	June	柴灣 2	Chai Wan 2
7 月	July	佛堂洲	Fat Tong Chau
8 月	August	港澳 1	MFT 1
		南丫電力 4	P 4

附錄 F – 續
APPENDIX F – Cont'd

F. 輔航燈與輔航設備工場員工比例
Ratio of Aids to Staff of Aids to Navigation Unit Workshop

年份 Year	輔航燈 Aids		輔航設備工場員工 ⁽¹⁾ Staff of Aids to Navigation Unit Workshop ⁽¹⁾		比例 Ratio (c) = (a)/(b)
	數目 Number (a)	變動百分率 Percentage Change	數目 Number (b)	變動百分率 Percentage Change	
1996	380	+0.3%	36	-2.7%	10.6
1997	395	+3.9%	32	-11.1%	12.3
1998	432	+9.4%	29	-9.4%	14.9
1999	463	+7.2%	27	-6.9%	17.1
2000	468	+1.1%	27	0%	17.3
2001	482	+3.0%	25	-7.4%	19.3
2002	483	+0.2%	27	+8.0%	17.9
2003	497	+2.9%	27	0%	18.4
2004	509	+2.4%	27	0%	18.9
2005	518	+1.8%	25	-7.4%	20.7
2006	529	+2.1%	23	-8.0%	23.0
2007	533	+0.8%	23	0%	23.2
2008	536	+0.6%	24	+4.3%	22.3
2009	540	+0.7%	23	-4.2%	23.5
2010	543	+0.6%	24	+4.3%	22.6
2011	541	-0.4%	23	-4.2%	23.5
2012	539	-0.4%	22	-4.3%	24.5
2013	542	+0.6%	20	-9.1%	27.1
2014	546	+0.7%	20	0%	27.3
2015	544	-0.4%	19	-5%	28.6

註釋： (1) 不包括負責在香港水域範圍內看管繫船設備／檢修浮泡的 5 位員工。
Note: Excluding five staff who are responsible for looking after the mooring facilities/overhaul of buoys within Hong Kong waters.