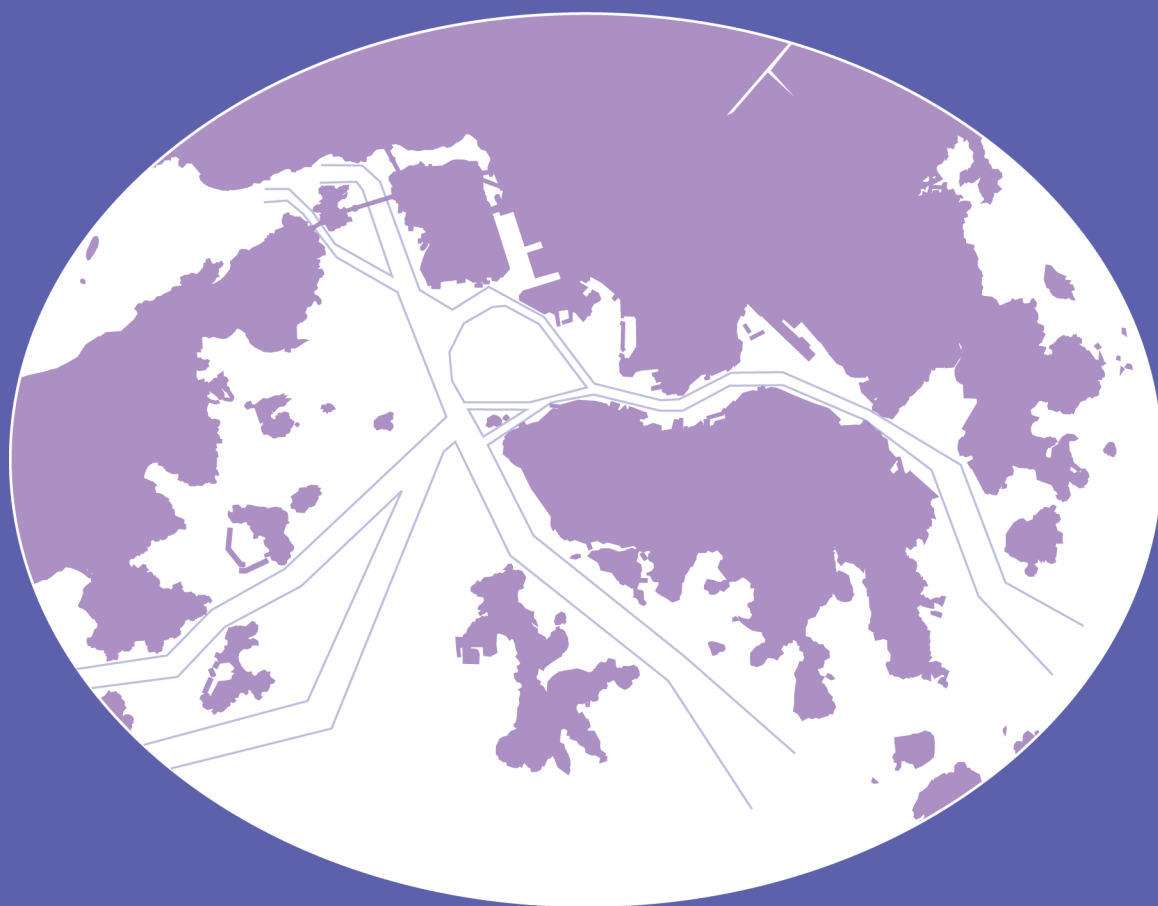


香港港口統計年報

2014

Port of Hong Kong
Statistical Tables



中華人民共和國香港特別行政區海事處
Marine Department
Hong Kong Special Administrative Region
People's Republic of China

香 港 港 口
PORT OF HONG KONG
統 計 年 報
STATISTICAL TABLES
2014

有關本刊物的查詢，請聯絡：

海事處 策劃、發展協調及港口保安部 統計組

地址：中國香港中環統一碼頭道 38 號海港政府大樓 23 樓 2307 室

電話：(852) 2852 3660 圖文傳真：(852) 2542 4638

電郵：st-sec@mardep.gov.hk

Enquiries about this publication can be directed to:

Statistics Section

Planning, Development & Port Security Branch

Marine Department

Address: Room 2307, 23/F, Harbour Building,

38 Pier Road, Central, Hong Kong, China.

Tel.: (852) 2852 3660 Fax: (852) 2542 4638

E-mail: st-sec@mardep.gov.hk

海事處網頁

Home Page of the Marine Department

<http://www.mardep.gov.hk/>

同心協力，促進卓越海事服務

We are One in Promoting Excellence in Marine Services

如欲進入統計表／附錄，請按下有關的藍色項目
 To view the statistical tables/appendices, please click
 the item in blue

目錄 CONTENTS

	頁數 Page No.
註釋 EXPLANATORY NOTES	iv - vii
摘要 SUMMARY	viii
2009 至 2014 年主要港口統計數字及每年增長率 Principal Port Statistics for 2009 - 2014 and Annual Growth Rates	
第一部 - 港口活動 PART I Port Activities	
<i>抵港／離港的船次</i> <i>Vessel Arrivals/Departures</i>	
表 1 2014 年 按主要停泊地點分析抵港遠洋輪船的船次 TABLE 1 Ocean Vessel Arrivals by Main Berthing Location, 2014	1
表 2 2014 年 按主要停泊地點分析離港遠洋輪船的船次 TABLE 2 Ocean Vessel Departures by Main Berthing Location, 2014	1
表 3 2014 年 按船舶類型分析抵港船舶的船次 TABLE 3 Vessel Arrivals by Ship Type, 2014	2
表 4 2014 年 按船旗分析抵港船舶的船次 TABLE 4 Vessel Arrivals by Flag, 2014	3 - 4
表 5 2014 年 按船旗分析曾停靠香港的船舶數目和淨註冊噸位 TABLE 5 Number and NRT of Vessels Calling Hong Kong by Flag, 2014	5 - 6
表 6 2014 年 按船舶類型分析離港船舶的平均在港停留時間 TABLE 6 Average Time in Port for Vessels Departing Hong Kong by Ship Type, 2014	7
表 7 2014 年 在貨櫃碼頭處理貨櫃的遠洋輪船統計數字 TABLE 7 Statistics on Ocean Vessels with Containers Handled in Container Terminals, 2014	8
表 8 2014 年 按夏季吃水分析抵港遠洋輪船的船次 TABLE 8 Ocean Vessel Arrivals by Summer Draft, 2014	9
表 9 2014 年 按船舶總長度分析抵港遠洋輪船的船次 TABLE 9 Ocean Vessel Arrivals by Vessel Length Overall, 2014	9
表 10 2014 年 按主要來港原因分析抵港遠洋輪船的船次 TABLE 10 Ocean Vessel Arrivals by Main Reason of Call, 2014	10
表 11 2014 年 按停泊地點及有否目的地分析郵輪抵港船次 TABLE 11 Cruise Arrivals by Berthing Location by Whether the Trip with Destination, 2014	11
表 12 2014 年 跨境客運碼頭的抵港及離港航次統計數字 TABLE 12 Statistics on Vessel Arrivals and Departures at Cross-boundary Ferry Terminals, 2014	12
表 13 2014 年 按船舶類型分析香港過境船舶的船次 TABLE 13 Number of Vessel Trips Transit Hong Kong by Ship Type, 2014	13

客運量

Passenger Throughput

	<p>表 14 2014 年 按跨境客運碼頭分析客運量</p> <p>TABLE 14 Passenger Throughput by Cross-boundary Ferry Terminal, 2014</p>	14
	<p>表 15 2014 年 按航線分析抵港及離港乘客人次</p> <p>TABLE 15 Passenger Arrivals and Departures by Route, 2014</p>	15 - 16

貨櫃／貨物吞吐量

Container/Cargo Throughput

	<p>表 16 2014 年 按主要貨物裝卸地點分析貨櫃吞吐量</p> <p>TABLE 16 Container Throughput by Main Cargo Handling Location, 2014</p>	17
	<p>表 17 2014 年 按貨櫃碼頭以外的主要貨物裝卸地點分析裝卸的貨櫃</p> <p>TABLE 17 Containers Discharged/Loaded at Main Cargo Handling Locations Other than Container Terminals, 2014</p>	18
	<p>表 18 2014 年 按貨物種類及運輸方式劃分的裝卸港口貨物</p> <p>TABLE 18 Port Cargo Discharged/Loaded by Cargo Type and Mode of Transport, 2014</p>	19

第二部 - 港口服務及管理
PART II Port Services and Control

	<p>表 19 海港繫泊浮泡統計數字</p> <p>TABLE 19 Harbour Mooring Buoys Statistics</p>	20
	<p>表 20 2014 年 按分布地點分析香港私人繫泊設備數目</p> <p>TABLE 20 Number of Private Moorings Laid in Hong Kong by Location, 2014</p>	21 - 22
	<p>表 21 碇泊處一覽 (截至 2014 年年底)</p> <p>TABLE 21 List of Anchorages (as at year end 2014)</p>	23 - 24
	<p>表 22 避風塘一覽 (截至 2014 年年底)</p> <p>TABLE 22 List of Typhoon Shelters (as at year end 2014)</p>	25
	<p>表 23 公眾貨物裝卸區一覽 (截至 2014 年年底)</p> <p>TABLE 23 List of Public Cargo Working Areas (as at year end 2014)</p>	26
	<p>表 24 垃圾收集、油污和檢控個案統計數字</p> <p>TABLE 24 Refuse Collection, Oil Pollution and Prosecution Statistics</p>	27
	<p>表 25 按噸位等級分析香港持牌船隻 (截至 2014 年年底)</p> <p>TABLE 25 Hong Kong Licensed Vessels by Tonnage Classification (as at year end 2014)</p>	28 - 29

		頁數 Page No.
第三部 -	船舶服務	
PART III	Shipping Services	
表 26	船舶安全監督統計數字	
TABLE 26	Ship Safety Statistics	30 - 32
表 27	本地船隻安全／海事工業安全／海事意外統計數字	
TABLE 27	Local Vessels Safety/Marine Industrial Safety/Marine Accidents Statistics	33 - 38
表 28	海員發證、註冊和僱用統計數字	
TABLE 28	Seafarers' Certification, Registration and Employment Statistics	39 - 45
表 29	香港註冊船舶統計數字	
TABLE 29	Statistics on Ships Registered in Hong Kong	46 - 47
表 30	政府船隊統計數字	
TABLE 30	Government Fleet Statistics	48
表 31	政府船舶所屬部門及可用率情況 (截至 2014 年年底)	
TABLE 31	Departmental Ownership and Availabilities of Government Vessels (as at year end 2014)	49
第四部 -	附錄	
PART IV	Appendices	
附錄 A	海事處組織架構圖 (截至 2014 年年底)	
APPENDIX A	Organisation Chart of the Marine Department (as at year end 2014)	A1
附錄 B	海事處的編制和實際員額 (截至 2014 年年底)	
APPENDIX B	Establishment and Strength of the Marine Department (as at year end 2014)	A2 - A5
附錄 C	2014 年 海事處訓練組舉辦的課程	
APPENDIX C	Training Courses Conducted by Training Section, Marine Department in 2014	A6 - A7
附錄 D	2014 年 海事處訪客	
APPENDIX D	Visitors of the Marine Department, 2014	A8 - A10
附錄 E	2014 年 新訂海事法例	
APPENDIX E	New Maritime Legislations, 2014	A11
附錄 F	2014 年 輔航設備	
APPENDIX F	Aids to Navigation, 2014	A12 - A19

1. 簡介

香港港口統計年報是香港海事處編製的港口及海事統計資料一覽表。這本年報輯錄以下統計數字和資料：

- 抵港／離港的船次
- 客運量
- 貨櫃／貨物吞吐量
- 港口服務及管理
- 船舶服務
- 海事處組織架構圖
(編制和實際員額)
- 海事處舉辦的課程
- 海事處訪客
- 新訂海事法例
- 輔航設備

2. 資料來源

船舶進出口統計數字

船舶進出口統計數字乃根據船公司或代理人向海事處申報船舶抵達／離開港口的資料時所遞交的申報表(MO 618及MO 618A)編製而成。(摘要、表一至十)

貨櫃統計數字

在貨櫃碼頭裝運的貨櫃統計數字，主要由碼頭經營者提供。不在貨櫃碼頭裝運的遠洋輪船「空」貨櫃統計數字，由海事處根據申報表MO 618及MO 618A編製。所有其他詳細的貨櫃統計數字，皆由政府統計處根據貨物艙單抽樣編製而成。(摘要、表十六至十七)

停泊／貨物裝卸地點

有關遠洋輪船的主要貨物裝卸區和主要停泊地點的資料，均取自海事處船舶交通管理系統所保存的船舶活動報告。(表一至二、表七、表十六至十七)

1. Introduction

The *Port of Hong Kong Statistical Tables* is a collection of Hong Kong Port and Maritime statistical information compiled by the Marine Department. This publication brings together the following statistics and information:

- Vessel Arrivals/Departures
- Passenger Throughput
- Container/Cargo Throughput
- Port Services and Control
- Shipping Services
- Organisation Chart of the Marine Department
(Establishment and Strength)
- Training Courses Conducted by the Marine Department
- Visitors to the Marine Department
- New Maritime Legislations
- Aids to Navigation

2. Data Sources

Vessel Statistics

Vessel statistics are based on the declaration forms (MO 618 & MO 618A) submitted to the Marine Department by shipping companies/agents for declaring arrivals/departures of vessels under their charge. (Summary Table, Tables 1 – 10)

Container Statistics

Statistics on container throughput handled at Container Terminals are mainly obtained from the terminal operators. Statistics on empty containers (ocean) handled at locations other than Container Terminals are compiled by the Marine Department based on the declaration forms of MO 618 and MO 618A. As for all the other detailed container throughput statistics, they are compiled by the Census and Statistics Department based on sampling of data in cargo manifests. (Summary Table, Tables 16 – 17)

Berthing/Cargo Handling Location

Information on the main cargo handling location and main berthing location in respect of ocean vessels are extracted from the trip activity report kept in the Marine Department's Vessel Traffic Management System. (Tables 1 – 2, 7, 16 – 17)

3. 用語及分類

容量

在本報告中，船舶的容量是以淨註冊噸位來表示。計算單位為淨註冊噸。淨註冊噸位是由一艘船的船殼內的容量(以立方呎計)，加上在甲板上用以裝載貨物、貯藏品及乘客的空間，再減去船長、高級船員、船員所住的地方、燃料、導航及推進器所佔用的地方。每一淨註冊噸相等於 100 立方呎的容量。

貨物裝卸地點

在本報告中，貨物裝卸地點的分類是「貨櫃碼頭」、「泊位和倉庫碼頭(包括公眾貨物裝卸區)」、「碇泊處」和「浮泡」。

貨櫃吞吐量

這是指以標準貨櫃單位計算的貨櫃搬運數目。一個標準貨櫃單位等同一個二十呎貨櫃的容量。

船旗

這是指船舶的國籍，表明其正式註冊的地方。香港在一九九二年正式開始船舶註冊制度。一九九七年七月一日起，香港特別行政區經中央人民政府授權繼續進行船舶註冊，並根據香港特別行政區的法律以「中國香港」的名義頒發有關證件。

內河航限

內河航限是指香港鄰近水域，一般指香港與珠江、大鵬灣及澳門，及其他在廣東和廣西與香港鄰近水域相連的內陸水域。內河航限的精確定義是指以下範圍內的水域：

- 東至東經 114°30'；
- 南至北緯 22°09'；及
- 西至東經 113°31'。

船舶類型

這是指船舶的特定用途，分為十八類：運車船、化學品運載船、普通貨船、其他貨船、郵船／渡輪、散裝乾貨船、漁船／魚類加工船、全槽格式貨櫃船、液化氣體運載船、駁船／躉船／貨艇、油輪、礦沙／散貨／油類混用船、其他液體運載船、遊樂船、滾裝卸式船、半貨櫃船、拖船及其他。

3. Terms and Classifications

Capacity

In this report, the capacity of a vessel is expressed in terms of net registered tonnage (NRT). The unit of measurement is net registered ton. NRT is, broadly, the capacity of a ship in cubic feet of the space within the hull, and of the enclosed space above the deck available for cargo, stores and passengers but excluding space used for the accommodation of the master, officers, crew, fuel, navigation and propelling machinery. One net registered ton is equivalent to 100 cubic feet of capacity.

Cargo Handling Location

The types of cargo handling location shown in this report are “container terminals”, “berths and wharves (including public cargo working areas)”, “anchorage” and “buoys”.

Container Throughput

This refers to the number of movement of cargo containers in TEU terms. A TEU stands for a twenty-foot equivalent unit.

Flag

This is the nationality of the vessel, indicating where she is officially registered. In Hong Kong, the official vessel registration system was set up in 1992. As from 1.7.1997, the Hong Kong Special Administrative Region is authorised by the Central People’s Government to continue to maintain a shipping register and issue related certificates under its legislation, using the name ‘Hong Kong, China’.

River Trade Limits

River trade limits mean the waters in the vicinity of Hong Kong, which broadly include the Pearl River, Mirs Bay and Macao, and other inland waters in Guangdong and Guangxi which are accessible from waters in the vicinity of Hong Kong. The precise definition of river trade limits refers to waters within the following boundaries:

- to the East, meridian 114°30' East;
- to the South, parallel 22°09' North; and
- to the West, meridian 113°31' East.

Ship Type

This refers to the known specific function of the ship. Eighteen types of ship are distinguished: car carrier, chemical carrier/tanker, conventional cargo vessel, other cargo vessel, cruise/ferry, dry bulk carrier, fishing/fish processing vessel, fully cellular container vessel, gas carrier/tanker, lighter/barge/cargo junk, oil tanker, ore/bulk/oil carrier, other fluid carrier, pleasure vessel, roll on/roll off, semi-container vessel, tug and others.

4. 資料定義

內河船隻

根據《船舶及港口管制條例》(第 313 章)所訂，內河船隻是指進出香港與內河航限內的港口之間的船隻。(摘要、表三至六、表十六至十八)

停泊／貨物裝卸地點

船舶在進入香港水域後可能停泊超過一個停泊地點。若船舶來港的主要原因是裝卸貨物，則主要的貨物裝卸地點和主要的停泊地點是指最為昂貴的地點，當中以貨櫃碼頭居首位，隨後是泊位和倉庫碼頭(包括公眾貨物裝卸區)、碇泊處和浮泡。若船舶來港的主要原因不是裝卸貨物，主要停泊地點為停留時間最長的地點。(表一至二、表七、表十六至十七)

內河客船

內河客船的抵港次數是指船隻停泊於港澳碼頭、中國客運碼頭、屯門客運碼頭和海天客運碼頭的次數。屯門客運碼頭於二零一二年七月一日停止運作。(摘要、表三至五)

5. 資料局限

遠洋客船數字包括在內河航限以外水域行駛的遊樂船。但是，由於有些船主／代理人沒有申報這些船舶的淨註冊噸位資料給海事處，故遠洋客船的淨註冊噸位數字可能輕微低於實際的數字。(摘要、表一至五)

由於不能準確地統計本地持牌遊樂船和漁船來往香港及內河航限內的船次，故這兩類船隻沒有包括在內河船隻統計範圍內。(摘要、表三至六)

4. Data Definitions

River Vessels

In accordance with the Shipping and Port Control Ordinance, Cap. 313, Laws of Hong Kong, river vessels refer to those travelling between Hong Kong and ports that are within the river trade limits. (Summary Table, Tables 3 – 6, 16 – 18)

Berthing/Cargo Handling Location

A vessel may berth at more than one location after entering into Hong Kong waters. If the main reason of call of the vessel is for loading/discharging cargo, both the main cargo handling location and the main berthing location refer to the most costly location, with Container Terminals ranked first, followed by Berths and Wharves (including Public Cargo Working Areas), Anchorages and Buoys. If the main reason of call is not for loading/discharging cargo, the main berthing location refers to the one with the longest stay. (Tables 1 – 2, 7, 16 – 17)

River Passenger Vessels

The figures on arrivals of river passenger vessels refer to the number of berthings at the Macau Ferry Terminal (MFT), the China Ferry Terminal (CFT), the Tuen Mun Ferry Terminal (TMFT) and SkyPier. The Tuen Mun Ferry Terminal ceased operation on 1 July 2012. (Summary Table, Tables 3 – 5)

5. Data Limitations

The number of ocean passenger vessels includes pleasure vessels plying beyond the river trade limits. However, as some of their owners/agents do not report NRT information to the Marine Department, the total NRT for ocean passenger vessels may be slightly under-reported. (Summary Table, Tables 1 – 5)

As accurate number of trips of locally licensed pleasure vessels and fishing vessels plying between Hong Kong and the river trade limits is not available, these two categories of vessels are not included in the river vessel statistics. (Summary Table, Tables 3 – 6)

6. 數字的進位

客運量、貨物和貨櫃吞吐量及淨註冊噸位統計數字是計算至最接近的千位。

項目	單位
客運量	千位
貨物吞吐量	千公噸
貨櫃吞吐量	千個標準貨櫃單位
淨註冊噸位	千噸

由於四捨五入關係，本報告中所列的個別數字加起來可能不等於其總數。另外，變動百分率和比重百分率是以未經進位的數字計算所得。

7. 代號

- () 與去年同期比較的變動百分率
- ※ 變動多於 1000%
- ^ 變動在 ±0.05% 之間
- @ 比重百分率少於 0.05
- † 少於 500 個標準貨櫃單位／人次／公噸
- # 臨時數字
- * 修訂數字
- N.A. 沒有數字
- 不適用

6. Rounding of Figures

Statistics on passenger throughput, cargo and container throughput and NRT are rounded to the nearest thousand.

Items	Units
Passenger Throughput	thousand units
Cargo Throughput	'000 tonnes
Container Throughput	'000 TEUs
NRT	'000 tons

Figures shown in this report may not add up to the respective totals due to rounding. Furthermore, percentage changes and percentage shares are calculated from unrounded figures.

7. Symbols

- () % change over the same period of preceding year
- ※ Change more than 1000%
- ^ Change within ±0.05%
- @ Percentage share less than 0.05
- † Less than 500 TEUs/passengers/tonnes
- # Provisional figures
- * Revised figures
- N.A. Not available
- Not applicable

策劃、發展協調及港口保安部
統計組

二零一五年五月

Statistics Section
Planning, Development & Port Security Branch

May 2015

摘要
SUMMARY

2009 至 2014 年主要港口統計數字及每年增長率
Principal Port Statistics for 2009 – 2014 and Annual Growth Rates

項目 Item	2009	2013	2014	每年增長率 Annual Growth Rate		
				2013-2014	2009-2014 ⁽¹⁾	
1. 抵港船次 Number of Vessel Arrivals						
(a) 遠洋輪船 貨船 客船	Ocean Vessel Cargo Vessel Passenger Vessel	33 157 30 681 2 476	29 915 27 076 2 839	30 176 27 402 2 774	+1.0% +1.2% -2.3%	-1.6% -2.2% +2.3%
(b) 內河船隻 貨船 客船	River Vessel Cargo Vessel Passenger Vessel	172 348 89 750 82 598	157 625 77 374 80 251	159 275 79 316 79 959	+1.0% +2.5% -0.4%	-1.6% -2.4% -0.6%
2. 抵港船舶的淨註冊噸位 (千噸) NRT of Vessel Arrivals ('000 tons)						
(a) 遠洋輪船	Ocean Vessel	377 791	414 491	404 657	-2.4%	+1.4%
(b) 內河船隻	River Vessel	97 284	109 707	111 197	+1.4%	+2.7%
3. 貨櫃吞吐量 (千個標準貨櫃單位) Container Throughput ('000 TEUs)						
(i) 按停泊地點分析	By Berthing Location					
貨櫃碼頭	Container Terminals	15 159	17 118	17 587	+2.7%	+3.0%
貨櫃碼頭以外	Other than Container Terminals	5 881	5 234	4 639	-11.4%	-4.6%
(ii) 按運輸方式分析	By Mode of Transport					
遠洋	Ocean	14 085	16 009	15 591	-2.6%	+2.1%
內河	River	6 955	6 344	6 635	+4.6%	-0.9%
4. 貨物吞吐量 (千公噸) Cargo Throughput ('000 tonnes)						
(a) 海運	Seaborne	161 591	184 238	197 321	+7.1%	+4.1%
(b) 河運	River	81 376	91 817	100 416	+9.4%	+4.3%
5. 港澳碼頭、中國客運碼頭及屯門客運碼頭⁽²⁾客運量 (千位) Total Passenger Throughput at MFT, CFT and TMFT⁽²⁾ ('000)						
(a) 澳門 ⁽³⁾	Macau ⁽³⁾	17 607	21 067	21 631	+2.7%	+4.2%
(b) 中國內地	Mainland China	4 366	4 965	4 877	-1.8%	+2.2%
(c) 其他	Others	273	183	121	-33.7%	-15.0%

備註： 由於四捨五入關係，本摘要中所列的個別數字加起來可能不等於其總數。

Remark: Figures shown in this summary may not add up to the respective totals due to rounding.

註釋： (1) 複合平均每年增長率

Notes: Average annual compound growth rate

(2) 屯門客運碼頭於二零一二年七月一日停止運作。

The Tuen Mun Ferry Terminal ceased operation on 1 July 2012.

(3) 數字包括乘搭直升機來往澳門的乘客。

Helicopter passengers to and from Macau are included.

統計表
Statistical
Tables

表 1
TABLE 1

2014 年按主要停泊地點分析抵港遠洋輪船的船次
Ocean Vessel Arrivals by Main Berthing Location, 2014

主要停泊地點 Main Berthing Location	主要船舶類別 Main Vessel Category				總計 Total	
	貨船 Cargo Vessels		客船 Passenger Vessels			
	抵港船次 No. of Vessel Arrivals	淨註冊噸位 (千噸) NRT ('000)	抵港船次 No. of Vessel Arrivals	淨註冊噸位 (千噸) NRT ('000)	抵港船次 No. of Vessel Arrivals	淨註冊噸位 (千噸) NRT ('000)
	(%)	(%)	(%)	(%)	(%)	(%)
貨櫃碼頭 Container Terminals	10 699 (-8.3)	251 524 (-8.9)	0 (-100.0)	0 (-100.0)	10 699 (-8.4)	251 524 (-9.0)
泊位和倉庫碼頭 Berths and Wharves	1 828 (+13.5)	15 357 (+12.1)	952 (+2.6)	18 816 (+48.3)	2 780 (+9.5)	34 173 (+29.5)
碇泊處 Anchorage	14 852 (+8.1)	109 516 (+9.6)	265 (+6.4)	624 (+68.3)	15 117 (+8.1)	110 140 (+9.8)
浮泡 Buoys	23 (-56.6)	86 (-54.6)	1 557 (-6.0)	8 734 (-21.7)	1 580 (-7.6)	8 821 (-22.2)
總計 Total	27 402 (+1.2)	376 482 (-3.5)	2 774 (-2.3)	28 174 (+15.0)	30 176 (+0.9)	404 657 (-2.4)

表 2
TABLE 2

2014 年按主要停泊地點分析離港遠洋輪船的船次
Ocean Vessel Departures by Main Berthing Location, 2014

主要停泊地點 Main Berthing Location	主要船舶類別 Main Vessel Category				總計 Total	
	貨船 Cargo Vessels		客船 Passenger Vessels			
	離港船次 No. of Vessel Departures	淨註冊噸位 (千噸) NRT ('000)	離港船次 No. of Vessel Departures	淨註冊噸位 (千噸) NRT ('000)	離港船次 No. of Vessel Departures	淨註冊噸位 (千噸) NRT ('000)
	(%)	(%)	(%)	(%)	(%)	(%)
貨櫃碼頭 Container Terminals	10 994 (-7.1)	257 517 (-7.9)	0 (-100.0)	0 (-100.0)	10 994 (-7.2)	257 517 (-8.0)
泊位和倉庫碼頭 Berths and Wharves	1 999 (+20.6)	15 725 (+10.6)	951 (+2.5)	18 807 (+48.2)	2 950 (+14.1)	34 532 (+28.4)
碇泊處 Anchorage	13 092 (-6.3)	101 151 (-1.8)	317 (+1.3)	632 (+66.1)	13 409 (-6.1)	101 783 (-1.5)
浮泡 Buoys	26 (-40.9)	102 (-34.5)	1 558 (-6.0)	8 739 (-21.6)	1 584 (-6.9)	8 841 (-21.8)
總計 Total	26 111 (-5.1)	374 495 (-5.7)	2 826 (-2.7)	28 177 (+15.0)	28 937 (-4.9)	402 672 (-4.5)

表3
TABLE 3

2014年按船舶類型分析抵港船舶的船次
Vessel Arrivals by Ship Type, 2014

船舶類型 Ship Type	遠洋輪船 Ocean Vessels		內河船隻 River Vessels		總計 Total	
	抵港船次 No. of Vessel Arrivals	比重 百分率 Percentage Share	抵港船次 No. of Vessel Arrivals	比重 百分率 Percentage Share	抵港船次 No. of Vessel Arrivals	比重 百分率 Percentage Share
	(%)		(%)		(%)	
運車船 Car Carrier	160 (+10.3)	0.5%	10 (-37.5)	@	170 (+5.6)	0.1%
化學品運載船 Chemical Carrier/Tanker	399 (+3.1)	1.3%	188 (+7.4)	0.1%	587 (+4.4)	0.3%
普通貨船 Conventional Cargo Vessel	1 984 (-10.4)	6.6%	6 909 (+2.8)	4.3%	8 893 (-0.4)	4.7%
其他貨船 Other Cargo Vessel	0 (-)	0%	0 (-)	0%	0 (-)	0%
郵船／渡輪 Cruise/Ferry	2 530 (-2.7)	8.4%	79 959 (-0.4)	50.2%	82 489 (-0.4)	43.5%
散裝乾貨船 Dry Bulk Carrier	2 419 (-1.1)	8.0%	8 873 (+9.7)	5.6%	11 292 (+7.2)	6.0%
漁船／魚類加工船 Fishing/Fish Processing Vessel	313 (+2.0)	1.0%	N.A.	N.A.	313 (+2.0)	0.2%
全槽格式貨櫃船 Fully Cellular Container Vessel	17 680 (-7.0)	58.6%	51 073 (+1.1)	32.1%	68 753 (-1.1)	36.3%
液化氣體運載船 Gas Carrier/Tanker	313 (+1.3)	1.0%	144 (+12.5)	0.1%	457 (+4.6)	0.2%
駁船／躉船／貨艇 Lighter/Barge/Cargo Junk	2 183 (+717.6)	7.2%	2 661 (-22.3)	1.7%	4 844 (+31.2)	2.6%
油輪 Oil Tanker	729 (-10.9)	2.4%	541 (+23.5)	0.3%	1 270 (+1.1)	0.7%
礦沙／散貨／油類混用船 Ore/Bulk/Oil (OBO) Carrier	13 (0)	@	0 (-100.0)	0%	13 (-13.3)	@
其他液體運載船 Other Fluid Carrier	0 (-)	0%	0 (-)	0%	0 (-)	0%
遊樂船 Pleasure Vessel	244 (+2.5)	0.8%	N.A.	N.A.	244 (+2.5)	0.1%
滾裝卸式船 Roll On/Roll Off	206 (-14.9)	0.7%	21 (0)	@	227 (-13.7)	0.1%
半貨櫃船 Semi-container Vessel	245 (-19.7)	0.8%	6 529 (+31.0)	4.1%	6 774 (+28.1)	3.6%
拖船 Tug	496 (+53.1)	1.6%	2 179 (-17.0)	1.4%	2 675 (-9.3)	1.4%
其他 Others	262 (-6.4)	0.9%	188 (-23.9)	0.1%	450 (-14.6)	0.2%
總計 Total	30 176 (+0.9)	100.0%	159 275 (+1.0)	100.0%	189 451 (+1.0)	100.0%

表4
TABLE 4

2014年按船旗分析抵港船舶的船次
Vessel Arrivals by Flag, 2014

船旗 Flag	遠洋輪船 Ocean Vessels		內河船隻 River Vessels		總計 Total	
	抵港船次 No. of Vessel Arrivals	淨註冊噸位 (千噸) NRT ('000)	抵港船次 No. of Vessel Arrivals	淨註冊噸位 (千噸) NRT ('000)	抵港船次 No. of Vessel Arrivals	淨註冊噸位 (千噸) NRT ('000)
	(%)	(%)	(%)	(%)	(%)	(%)
安提瓜和巴布達 Antigua and Barbuda	703 (-22.3)	4 480 (-30.4)	97 (+14.1)	570 (+12.1)	800 (-19.2)	5 051 (-27.3)
巴哈馬 Bahamas	1 374 (+41.6)	23 479 (+144.2)	17 (-19.0)	310 (-7.5)	1 391 (+40.4)	23 789 (+139.1)
伯利茲 Belize	149 (+34.2)	329 (+10.0)	21 (+31.3)	45 (+8.1)	170 (+33.9)	374 (+9.8)
柬埔寨 Cambodia	139 (-1.4)	318 (-2.9)	13 (+85.7)	27 (+59.4)	152 (+2.7)	345 (+0.2)
中國內地 Mainland China	5 425 (-10.4)	20 663 (-7.3)	98 241 (+2.8)	64 860 (+4.7)	103 666 (+2.0)	85 523 (+1.6)
塞浦路斯 Cyprus	730 (+34.9)	7 805 (+33.6)	77 (+57.1)	795 (+9.4)	807 (+36.8)	8 599 (+30.9)
丹麥 Denmark	168 (-30.9)	8 447 (-28.0)	10 (-9.1)	388 (+5.3)	178 (-29.9)	8 835 (-27.0)
法國 France	68 (+3.0)	3 829 (+5.7)	8 (+100.0)	410 (+50.5)	76 (+8.6)	4 239 (+8.8)
德國 Germany	287 (-39.1)	13 124 (-28.6)	16 (-38.5)	626 (-51.0)	303 (-39.0)	13 750 (-30.1)
希臘 Greece	110 (-9.1)	4 648 (-14.3)	7 (-12.5)	177 (-19.1)	117 (-9.3)	4 825 (-14.5)
香港 Hong Kong	5 337 (+53.9)	65 198 (+10.3)	59 225 (-1.7)	19 622 (+2.9)	64 562 (+1.3)	84 821 (+8.5)
意大利 Italy	90 (-31.3)	2 254 (-31.7)	4 (+300.0)	78 (+151.5)	94 (-28.8)	2 332 (-30.0)
牙買加 Jamaica	699 (+19.9)	3 670 (-20.0)	0 (-)	0 (-)	699 (+19.9)	3 670 (-20.0)
南韓 Republic of Korea	831 (+1.8)	6 671 (+15.7)	44 (-29.0)	206 (-44.2)	875 (-0.3)	6 877 (+12.1)
利比里亞 Liberia	2 410 (-11.5)	52 293 (-12.2)	227 (+8.1)	5 666 (-1.5)	2 637 (-10.1)	57 960 (-11.3)
馬耳他 Malta	517 (+18.9)	15 691 (+38.9)	37 (-11.9)	1 239 (+49.7)	554 (+16.1)	16 930 (+39.6)
馬紹爾群島 Marshall Islands	1 148 (+14.3)	20 422 (+6.6)	112 (+49.3)	1 749 (+36.1)	1 260 (+16.8)	22 171 (+8.5)

表 4 – 續
TABLE 4 – Cont'd

船旗 Flag	遠洋輪船 Ocean Vessels		內河船隻 River Vessels		總計 Total	
	抵港船次 No. of Vessel Arrivals	淨註冊噸位 (千噸) NRT ('000)	抵港船次 No. of Vessel Arrivals	淨註冊噸位 (千噸) NRT ('000)	抵港船次 No. of Vessel Arrivals	淨註冊噸位 (千噸) NRT ('000)
	(%)	(%)	(%)	(%)	(%)	(%)
紐西蘭 New Zealand	72 (+500.0)	32 (+901.9)	2 (-)	3 (-)	74 (+516.7)	35 (+982.8)
帛琉共和國 Republic of Palau	88 (-)	375 (-)	4 (-)	7 (-)	92 (-)	382 (-)
巴拿馬 Panama	4 826 (-20.3)	74 148 (-20.9)	594 (-5.0)	8 589 (-21.7)	5 420 (-18.9)	82 737 (-21.0)
葡萄牙 Portugal	58 (※)	1 761 (※)	2 (-)	69 (-)	60 (※)	1 830 (※)
塞拉利昂 Sierra Leone	78 (+6.8)	138 (-19.6)	5 (-28.6)	7 (-62.4)	83 (+3.8)	144 (-23.5)
新加坡 Singapore	2 468 (-3.0)	43 112 (+4.7)	217 (-6.5)	2 668 (+17.0)	2 685 (-3.3)	45 780 (+5.4)
聖文森特和 格林納丁斯 St. Vincent and the Grenadines	172 (+63.8)	860 (+61.7)	9 (+12.5)	30 (+366.6)	181 (+60.2)	890 (+65.3)
台灣 Taiwan	666 (+11.4)	5 198 (+1.7)	83 (+137.1)	658 (+97.0)	749 (+18.3)	5 857 (+7.5)
泰國 Thailand	276 (+16.9)	1 233 (+20.9)	3 (-66.7)	4 (-86.8)	279 (+13.9)	1 237 (+17.7)
英國 United Kingdom	525 (-10.4)	16 141 (-7.4)	32 (-46.7)	1 144 (-25.2)	557 (-13.8)	17 286 (-8.9)
越南 Vietnam	210 (-6.7)	988 (+14.1)	23 (+53.3)	68 (+228.2)	233 (-2.9)	1 056 (+19.2)
其他 ⁽¹⁾ Others ⁽¹⁾	552 (-19.7)	7 348 (-3.9)	145 (-30.0)	1 182 (-21.6)	697 (-22.0)	8 530 (-6.8)
總計 Total	30 176 (+0.9)	404 657 (-2.4)	159 275 (+1.0)	111 197 (+1.4)	189 451 (+1.0)	515 854 (-1.6)

註釋： (1) 包括所有在二零一四年遠洋輪船抵港船次總數少於 50 船次的旗號。

Note: Including those flags of which the total number of ocean vessel arrivals in 2014 being less than 50.

表 5
TABLE 5

2014 年按船旗分析曾停靠香港的船舶數目和淨註冊噸位
Number and NRT of Vessels Calling Hong Kong by Flag, 2014

船旗 Flag	遠洋輪船 Ocean Vessels				內河船隻 River Vessels			
	船舶數目 Number of Vessels		淨註冊噸位 (千噸) NRT ('000)		船舶數目 Number of Vessels		淨註冊噸位 (千噸) NRT ('000)	
	(%)		(%)		(%)		(%)	
安提瓜和巴布達 Antigua and Barbuda	88	(-13.7)	781	(-12.8)	33	(-5.7)	258	(-7.1)
巴哈馬 Bahamas	104	(+3.0)	2 426	(+16.1)	17	(+13.3)	310	(-2.1)
伯利茲 Belize	35	(-22.2)	85	(-22.9)	13	(+8.3)	23	(-26.8)
柬埔寨 Cambodia	42	(+2.4)	107	(+29.7)	11	(+83.3)	23	(+54.0)
中國內地 Mainland China	571	(-8.5)	6 059	(-7.0)	1 573	(+2.5)	5 213	(-0.4)
塞浦路斯 Cyprus	102	(+24.4)	2 144	(+44.2)	22	(0)	393	(+5.9)
丹麥 Denmark	61	(-12.9)	2 951	(-2.6)	10	(-9.1)	388	(+5.3)
法國 France	21	(+10.5)	976	(+9.3)	7	(+75.0)	361	(+32.6)
德國 Germany	73	(-19.8)	3 152	(-10.8)	14	(-30.0)	558	(-31.8)
希臘 Greece	50	(+22.0)	2 043	(+9.5)	7	(-12.5)	177	(-19.1)
香港 Hong Kong	806	(+2.3)	15 206	(+7.0)	601	(+6.2)	3 995	(+29.3)
印尼 Indonesia	27	(+80.0)	349	(+151.8)	12	(+20.0)	67	(-36.2)
意大利 Italy	23	(-41.0)	584	(-40.6)	4	(+300.0)	78	(+151.5)
日本 Japan	28	(+16.7)	636	(+1.3)	2	(-33.3)	79	(-41.5)
基里巴斯共和國 Republic of Kiribati	22	(0)	73	(+2.7)	7	(-30.0)	23	(-26.3)
南韓 Republic of Korea	128	(+6.7)	918	(+10.1)	26	(-25.7)	157	(-49.3)
利比里亞 Liberia	541	(-0.4)	14 595	(+3.8)	145	(+8.2)	3 876	(+3.9)

表 5 – 續
TABLE 5 – Cont'd

船旗 Flag	遠洋輪船 Ocean Vessels				內河船隻 River Vessels			
	船舶數目 Number of Vessels		淨註冊噸位 (千噸) NRT ('000)		船舶數目 Number of Vessels		淨註冊噸位 (千噸) NRT ('000)	
	(%)		(%)		(%)		(%)	
馬來西亞 Malaysia	21	(-48.8)	68	(-68.6)	11	(+10.0)	248	(+166.0)
馬耳他 Malta	158	(+14.5)	5 049	(+24.7)	35	(+9.4)	1 227	(+71.1)
馬紹爾群島 Marshall Islands	268	(+10.3)	5 723	(+11.6)	64	(+36.2)	1 366	(+54.1)
巴拿馬 Panama	1 272	(-2.1)	23 456	(-1.1)	352	(-3.3)	5 897	(-7.1)
菲律賓 Philippines	28	(+86.7)	262	(+105.9)	3	(-25.0)	32	(-58.9)
塞拉利昂 Sierra Leone	21	(-4.5)	46	(+21.8)	5	(-16.7)	7	(-54.5)
新加坡 Singapore	456	(+7.8)	9 844	(+17.5)	120	(-6.3)	1 896	(+15.0)
聖文森特和 格林納丁斯 St. Vincent and the Grenadines	30	(+3.4)	196	(+16.9)	9	(+12.5)	30	(+366.6)
台灣 Taiwan	55	(+27.9)	706	(+10.6)	11	(+22.2)	133	(+18.5)
泰國 Thailand	30	(-18.9)	132	(+14.2)	3	(-62.5)	4	(-85.5)
英國 United Kingdom	170	(+5.6)	5 354	(+9.6)	25	(-32.4)	869	(-28.9)
越南 Vietnam	47	(-14.5)	222	(-11.1)	17	(+70.0)	42	(+181.5)
其他 ⁽¹⁾ Others ⁽¹⁾	197	(+13.2)	2 948	(+28.1)	57	(+1.8)	692	(-0.5)
總計 Total	5 475	(+0.5)	107 090	(+5.6)	3 216	(+2.2)	28 420	(+4.4)

備註： 此表內的遠洋輪船及內河船隻數目不能直接地加在一起，因為同一艘船舶在一年內可能會被歸納於遠洋及內河船舶類別，視乎該船舶在該年度不同的抵港旅程是否超越內河航限而定。

Remark: The number of ocean vessels and river vessels in this table cannot be grouped together by simple addition as the same vessel may be classified as ocean and river vessel during a year depending on whether her trips to Hong Kong in that year were beyond the river trade limits or not.

註釋： (1) 包括所有在二零一四年遠洋輪船抵港船舶總數少於 20 船舶的旗號。

Note: Including those flags of which the total number of ocean vessels calling Hong Kong in 2014 being less than 20.

表 6
TABLE 6

2014 年按船舶類型分析離港船舶的平均在港停留時間
Average Time in Port for Vessels Departing Hong Kong by Ship Type, 2014

小時
Hours

船舶類型 Ship Type	遠洋輪船 Ocean Vessels	內河船隻 River Vessels	總計 Total
化學品運載船 Chemical Carrier/Tanker	18	19	18
普通貨船 Conventional Cargo Vessel	32	26	28
郵船／渡輪 Cruise/Ferry	14	N.A.	N.A.
散裝乾貨船 Dry Bulk Carrier	26	32	30
漁船／魚類加工船 Fishing/Fish Processing Vessel	60	N.A.	N.A.
全槽格式貨櫃船 Fully Cellular Container Vessel	26	42	38
液化氣體運載船 Gas Carrier/Tanker	44	97	55
駁船／躉船／貨艇 Lighter/Barge/Cargo Junk	89	41	44
油輪 Oil Tanker	36	121	61
滾裝卸式船 Roll On/Roll Off	14	12	13
半貨櫃船 Semi-container Vessel	38	52	52
拖船 Tug	111	110	110
其他 Others	43	77	53
所有船舶類型 All Ship Types	30	42	39

表 7
TABLE 7

2014 年在貨櫃碼頭處理貨櫃的遠洋輪船統計數字
Statistics on Ocean Vessels with Containers Handled in Container Terminals, 2014

項目 Item	抵港船次 No. of Vessel Arrivals	比重百分率 Percentage Share
在貨櫃碼頭處理貨櫃的遠洋輪船 Ocean Vessels with Containers Handled in Container Terminals	(%) 10 670 (-8.3)	100.0%
- 按載重噸分析 Analysed by Deadweight Tonnage (DWT)		
少於 10 000 載重噸 Under 10 000 DWT	360 (-21.7)	3.4%
10 000 - 19 999 載重噸 10 000 - 19 999 DWT	1 829 (-5.5)	17.1%
20 000 - 29 999 載重噸 20 000 - 29 999 DWT	2 119 (+8.4)	19.9%
30 000 - 39 999 載重噸 30 000 - 39 999 DWT	1 159 (-16.0)	10.9%
40 000 - 49 999 載重噸 40 000 - 49 999 DWT	224 (-44.7)	2.1%
50 000 - 99 999 載重噸 50 000 - 99 999 DWT	3 461 (-9.7)	32.4%
100 000 載重噸及以上 100 000 DWT and above	1 518 (-9.2)	14.2%
- 按主要貿易地區／國家分析 (根據所申報的上一個停靠港口) Analysed by Principal Trading Region/Country (Based on Reported Previous Port)		
亞洲 Asia	9 552 (-7.3)	89.5%
– 中國內地 – Mainland China	2 395 (-10.0)	22.4%
– 台灣 – Taiwan	2 048 (-14.4)	19.2%
– 新加坡 – Singapore	1 337 (-4.5)	12.5%
– 越南 – Vietnam	1 244 (+2.6)	11.7%
– 泰國 – Thailand	675 (-15.4)	6.3%
– 韓國 – Korea	587 (+15.1)	5.5%
– 日本 – Japan	491 (-13.1)	4.6%
– 其他 – Others	775 (+0.8)	7.3%
北美洲 North America	318 (-10.2)	3.0%
西歐 Western Europe	182 (-38.1)	1.7%
中美洲、南美洲 Central and South America	170 (-32.8)	1.6%
大洋洲 Oceania	134 (-14.6)	1.3%
獨立國家聯合體及東歐 CIS and Eastern Europe	119 (+35.2)	1.1%
非洲 Africa	61 (-4.7)	0.6%
中東 Middle East	45 (+60.7)	0.4%
其他 Others	89 (-5.3)	0.8%
使用貨櫃碼頭處理貨櫃的遠洋輪船在香港港口的平均停留時間 (小時) Average Time in Hong Kong Port for Ocean Vessels with Containers Handled in Container Terminals (Hours)	18.0 ⁽¹⁾	

註釋： (1) 指在香港港口停留的整段時間而非單在貨櫃碼頭逗留的時間。

Note: Refers to total time in Hong Kong port and not only time at container terminals.

表 8
TABLE 8

2014 年按夏季吃水分析抵港遠洋輪船的船次
Ocean Vessel Arrivals by Summer Draft, 2014

夏季吃水 (米) Summer Draft (m)	抵港船次 No. of Vessel Arrivals		比重百分率 Percentage Share
		(%)	
< 2	54	(-10.0)	0.2%
2 – < 4	3 655	(-3.2)	12.1%
4 – < 6	2 916	(-17.1)	9.7%
6 – < 8	3 526	(+16.2)	11.7%
8 – < 10	7 592	(+15.6)	25.2%
10 – < 12	3 847	(+2.0)	12.7%
12 – < 14	3 165	(-9.2)	10.5%
14 – < 16	4 533	(-2.9)	15.0%
16 – < 18	416	(-18.3)	1.4%
≥ 18	472	(-10.6)	1.6%
總計 Total	30 176	(+0.9)	100.0%

表 9
TABLE 9

2014 年按船舶總長度分析抵港遠洋輪船的船次
Ocean Vessel Arrivals by Vessel Length Overall, 2014

船舶總長度 (米) Vessel Length Overall (m)	抵港船次 No. of Vessel Arrivals		比重百分率 Percentage Share
		(%)	
< 30	725	(+28.5)	2.4%
30 – < 50	621	(+23.5)	2.1%
50 – < 100	5 543	(-7.7)	18.4%
100 – < 150	7 468	(+21.3)	24.7%
150 – < 200	7 235	(-3.7)	24.0%
200 – < 250	2 634	(-10.4)	8.7%
250 – < 300	3 365	(-5.9)	11.2%
300 – < 350	1 954	(-5.6)	6.5%
≥ 350	631	(+6.6)	2.1%
總計 Total	30 176	(+0.9)	100.0%

表 10
TABLE 10

2014 年按主要來港原因分析抵港遠洋輪船的船次
Ocean Vessel Arrivals by Main Reason of Call, 2014

主要來港原因 Main Reason of Call	抵港船次 No. of Vessel Arrivals		比重百分率 Percentage Share
		(%)	
裝貨、卸貨 Loading and Discharging Cargo	20 507	(+4.4)	68.0%
旅遊 (郵輪) Tour (Cruise)	2 524	(-2.8)	8.4%
交換文件 Switch Documents	1 691	(-10.8)	5.6%
補充燃料 Bunkers	1 495	(+32.2)	5.0%
船上用品補給 (燃料除外) Taking Stores (Except Bunkers)	1 403	(-8.5)	4.6%
卸貨 Discharging Cargo	1 102	(-14.9)	3.7%
裝貨 Loading Cargo	445	(-17.6)	1.5%
消遣／運動 (遊艇) Pleasure/Sports (Pleasure Vessels)	244	(+3.0)	0.8%
緊急修理、非例行入乾塢 Emergency Repair, Non-routine Dry Docking	35	(-25.5)	0.1%
船員變動 (貨船) Change of Crew (Cargo Vessels)	31	(-36.7)	0.1%
例行入乾塢 Routine Dry Docking	23	(+21.1)	0.1%
其他 Others	676	(-28.0)	2.2%
總計 Total	30 176	(+0.9)	100.0%

表 11
TABLE 11

2014 年按停泊地點及有否目的地分析郵輪抵港船次
Cruise Arrivals by Berthing Location by Whether the Trip with Destination, 2014

停泊地點 Berthing Location	郵輪抵港船次 ⁽¹⁾ Number of Cruise Arrivals ⁽¹⁾					
	有目的地 With Destination		公海 ⁽²⁾ High Seas ⁽²⁾		總計 Total	
	數目 Number	變動百分率 Percentage Change	數目 Number	變動百分率 Percentage Change	數目 Number	變動百分率 Percentage Change
海運大廈 Ocean Terminal	102	+67.2%	440	+22.2%	542	+28.7%
中國客運碼頭 China Ferry Terminal	8	0%	368	-23.5%	376	-23.1%
浮泡和碇泊處 Buoys and Anchorages	2	-50.0%	1 571	-5.5%	1 573	-5.6%
啟德郵輪碼頭 ⁽³⁾ Kai Tak Cruise Terminal ⁽³⁾	28	+211.1%	0	-	28	+211.1%
其他 ⁽⁴⁾ Others ⁽⁴⁾	0	-100.0%	5	+25.0%	5	-54.5%
總計 Total	140	+57.3%	2 384	-4.9%	2 524	-2.8%

- 註釋： (1) 不包括非載客的船次，例如緊急修理、補充燃料等。
Notes: Excluding those trips not for passenger carrying, e.g. emergency repair, bunkers, etc.
- (2) 根據海商法，公海的定義是指不屬於任何國家領海或內水的海域。
According to Maritime Law, High Seas is defined to be the waters lying outside the territorial waters of any countries.
- (3) 啟德郵輪碼頭於二零一三年六月十三日啟用。
Kai Tak Cruise Terminal commenced operation on 13 June 2013.
- (4) 包括私人泊位和倉庫碼頭、船塢及葵青貨櫃碼頭。
Including private berths and wharves, docks, and Kwai Tsing Container Terminals.

資料來源： 海事處船隻航行監察中心
Data Source: Vessel Traffic Centre, Marine Department

表 12
TABLE 12

2014 年跨境客運碼頭的抵港及離港航次統計數字^{(1) (2)}
Statistics on Vessel Arrivals and Departures at Cross-boundary Ferry Terminals, 2014^{(1) (2)}

來往 From/To	運輸工具類別 Type of Carrier	提供服務的船舶/ 直升機數目 No. of Vessels/ Helicopters in Services	抵港 Arrivals				離港 Departures			
			航次 No. of Trips		淨註冊噸位(千噸) NRT ('000)		航次 No. of Trips		淨註冊噸位(千噸) NRT ('000)	
		(%)	(%)	(%)	(%)	(%)	(%)	(%)	(%)	
澳門 Macau	雙體船 Catamaran	38 (-5.0)	39 164 (-1.0)	8 437 (-0.9)	40 022 (-0.6)	8 623 (-0.4)				
	噴射飛翼船 Jetfoil	11 (0)	14 568 (-0.9)	1 422 (-1.0)	14 753 (-0.8)	1 440 (-0.8)				
	直升機 Helicopter	6 (+20.0)	6 305 (-9.3)	- (-)	6 305 (-9.3)	- (-)				
小計 - 澳門 Sub-total - Macau			60 037 (-2.0)	9 858 (-0.9)	61 080 (-1.6)	10 063 (-0.5)				
高明 Gaoming	雙體船 Catamaran	1 (0)	355 (-0.3)	62 (-0.3)	356 (0)	62 (0)				
虎門 Humen	雙體船 Catamaran	5 (+66.7)	1 835 (+1.2)	287 (+1.7)	1 829 (+1.2)	286 (+1.7)				
江門 Jiangmen	雙體船 Catamaran	3 (+50.0)	436 (-0.7)	60 (-0.6)	438 (-1.4)	60 (-1.3)				
蓮花山 Lianhuashan	雙體船 Catamaran	4 (0)	1 807 (-0.8)	298 (-1.0)	1 805 (-0.1)	298 (-0.3)				
南沙 Nansha	雙體船 Catamaran	5 (0)	865 (-3.5)	164 (-2.4)	864 (-3.6)	164 (-2.5)				
蛇口 Shekou	雙體船 Catamaran	17 (0)	7 085 (+0.4)	897 (+2.9)	7 031 (+0.5)	888 (+3.1)				
深圳 Shenzhen	雙體船 Catamaran	4 (+33.3)	1 566 (+7.9)	254 (+8.7)	1 564 (+8.1)	253 (+8.8)				
順德 Shunde	雙體船 Catamaran	3 (-25.0)	1 771 (-3.4)	299 (-3.2)	1 786 (-6.0)	301 (-5.8)				
中山 Zhongshan	雙體船 Catamaran	7 (+16.7)	3 874 (+7.5)	658 (+7.7)	4 105 (+1.8)	697 (+2.1)				
珠海 Zhuhai	雙體船 Catamaran	11 (0)	6 633 (-0.9)	1 093 (-0.8)	6 710 (+0.2)	1 106 (+0.5)				
小計 - 內河港口 Sub-total - River Trade Ports			26 227 (+1.0)	4 071 (+1.8)	26 488 (+0.4)	4 116 (+1.1)				
廈門 Xiamen	大船 Conventional Ferry	1 (0)	8 (0)	43 (+48.5)	8 (0)	43 (+48.5)				
公海 Open Sea	大船 Conventional Ferry	1 (0)	368 (-23.5)	1 956 (+13.6)	369 (-23.1)	1 961 (+14.1)				
小計 - 大船 Sub-total - Conventional Ferry			376 (-23.1)	1 998 (+14.2)	377 (-22.7)	2 004 (+14.7)				
總計 Total			86 640 (-1.2)	15 928 (+1.5)	87 945 (-1.1)	16 183 (+1.6)				

註釋： (1) 包括港澳碼頭、中國客運碼頭及海天客運碼頭的統計。
Notes: Including Macau Ferry Terminal, China Ferry Terminal and SkyPier.

(2) 數字不包括非載客的跨境渡輪船次。
Non-passenger carrying trips of cross-boundary ferry are excluded.

資料來源： 海事處客運碼頭組及香港國際機場客運碼頭服務有限公司
Data Source: Ferry Terminals Section, Marine Department and Hong Kong International Airport Ferry Terminal Services Ltd

表 13
TABLE 13

2014年按船舶類型分析香港過境船舶的船次⁽¹⁾
Number of Vessel Trips Transit Hong Kong⁽¹⁾ by Ship Type, 2014

船舶類型 Ship Type	過境船次 Vessel Trips Transit Hong Kong	變動百分率 Percentage Change	淨註冊噸位 (千噸) NRT ('000)	變動百分率 Percentage Change
全槽格式貨櫃船 Fully Cellular Container Vessel	14 726	+16.2%	475 577	+23.0%
拖船 Tug	828	-34.3%	762	-37.0%
普通貨船 Conventional Cargo Vessel	501	+2.2%	2 609	+7.1%
散裝乾貨船 Dry Bulk Carrier	358	+14.7%	7 095	-3.6%
液化氣體運載船 Gas Carrier/Tanker	196	+88.5%	5 130	+94.0%
化學品運載船 Chemical Carrier/Tanker	89	-9.2%	571	+3.3%
油輪 Oil Tanker	88	-23.5%	1 056	+31.4%
其他 Others	547	+37.8%	1 264	+49.3%
總計 Total	17 333	+12.2%	494 065	+22.8%

註釋： (1) 只包括曾提供到達前通知書的過境香港水域船舶的船次。

Note: Including only those vessel trips transit Hong Kong waters with Pre-arrival Notification.

資料來源： 海事處船隻航行監察中心

Data Source: Vessel Traffic Centre, Marine Department

表 14
TABLE 14

2014 年按跨境客運碼頭分析客運量
Passenger Throughput by Cross-boundary Ferry Terminal, 2014

千位 ('000)

來往 From/To	澳門 Macau	中國內地 Mainland China	公海 Open Sea	總計 Total
海事處轄下客運碼頭 ⁽¹⁾ Marine Ferry Terminals ⁽¹⁾	(%) 21 631 (+2.7)	(%) 4 877 (-1.8)	(%) 121 (-33.7)	(%) 26 628 (+1.6)
港澳碼頭 Macau Ferry Terminal	16 238 ⁽²⁾ (+0.2)	1 358 (-0.7)	- (-)	17 596 (+0.1)
中國客運碼頭 China Ferry Terminal	5 393 (+10.8)	3 519 (-2.2)	121 (-33.7)	9 033 (+4.5)
海天客運碼頭 SkyPier	1 003 (-3.8)	1 753 (+7.8)	- (-)	2 756 (+3.3)
總計 Total	22 633 (+2.4)	6 630 (+0.6)	121 (-33.7)	29 384 (+1.7)

註釋： (1) 數字與入境事務處發布的統計數字並不相等，原因是入境事務處的數字包括毋須付船費的乘客 (例如不足一歲者)。

Notes: Figures do not tally with those released by the Immigration Department because figures of the Immigration Department cover passengers who are not required to pay fares (e.g. passengers less than one year of age).

(2) 數字包括乘搭直升機來往澳門的乘客。
Helicopter passengers to and from Macau are included.

資料來源： 海事處客運碼頭組及香港國際機場客運碼頭服務有限公司

Data Source: Ferry Terminals Section, Marine Department and Hong Kong International Airport Ferry Terminal Services Ltd

表 15
TABLE 15

2014 年按航線分析抵港及離港乘客人次
Passenger Arrivals and Departures by Route, 2014

I. 海事處轄下客運碼頭⁽¹⁾
Marine Ferry Terminals⁽¹⁾

來往 From/To	運輸工具類別 Type of Carrier	抵港乘客 Passenger Arrivals		離港乘客 Passenger Departures	
		乘客人次 (千位) Passengers ('000)	載客率 Passenger Load Factor	乘客人次 (千位) Passengers ('000)	載客率 Passenger Load Factor
		(%)	(%)	(%)	(%)
澳門 Macau	雙體船 Catamaran	7 137 (+0.1)	53.6% (+1.0)	10 174 (+6.6)	70.8% (+7.8)
	噴射飛翼船 Jetfoil	2 119 (-2.8)	60.6% (-1.9)	2 139 (+0.1)	60.4% (+0.8)
	直升機 Helicopter	30 (-16.2)	39.1% (-7.5)	32 (-14.7)	42.1% (-5.9)
小計 – 澳門 Sub-total – Macau		9 286 (-0.7)	55.0% (+0.3)	12 344 (+5.3)	68.7% (+6.5)
高明 Gaoming	雙體船 Catamaran	57 (-22.3)	47.2% (-22.1)	52 (-22.7)	43.2% (-22.7)
江門 Jiangmen	雙體船 Catamaran	52 (-10.9)	33.4% (-9.8)	56 (-11.3)	36.2% (-9.6)
蓮花山 Lianhuashan	雙體船 Catamaran	273 (-9.4)	43.6% (-8.2)	251 (-8.2)	40.0% (-7.5)
南沙 Nansha	雙體船 Catamaran	84 (-8.8)	30.0% (-8.1)	91 (-7.7)	32.2% (-7.4)
蛇口 Shekou	雙體船 Catamaran	144 (+4.5)	25.0% (-3.5)	121 (+10.9)	21.0% (+2.1)
深圳 Shenzhen ⁽²⁾	雙體船 Catamaran ⁽²⁾	1 (-)	1.9% (-)	† (-)	2.3% (-)
順德 Shunde	雙體船 Catamaran	330 (-8.7)	54.8% (-5.5)	321 (-9.1)	52.9% (-3.1)
中山 Zhongshan	雙體船 Catamaran	496 (-1.4)	50.8% (-3.4)	517 (-4.6)	48.2% (-6.8)
珠海 Zhuhai	雙體船 Catamaran	997 (+1.6)	56.7% (+3.3)	1 034 (+8.8)	57.9% (+8.9)
小計 – 內河港口 Sub-total – River Trade Ports		2 433 (-3.0)	47.4% (-3.6)	2 443 (-0.5)	46.6% (-1.3)
廈門 Xiamen	大船 Conventional Ferry	† (+22.2)	0.8% (+23.3)	† (+17.2)	0.8% (+18.3)
公海 Open Sea	大船 Conventional Ferry	61 (-33.8)	29.9% (-12.7)	61 (-33.6)	29.9% (-12.8)
小計 – 大船 Sub-total – Conventional Ferry		61 (-33.8)	29.3% (-13.1)	61 (-33.5)	29.3% (-13.2)
海事處轄下客運碼頭 Marine Ferry Terminals		11 780 (-1.4)	53.0% (-0.6)	14 848 (+4.1)	63.4% (+5.1)

註釋： (1) 包括港澳碼頭及中國客運碼頭。

Notes: Including Macau Ferry Terminal and China Ferry Terminal.

(2) 深圳新航線於二零一四年七月十九日啟航。

The new Shenzhen route commenced operation on 19 July 2014.

表 15 - 續
TABLE 15 - Cont'd

II. 海天客運碼頭
SkyPier

來往 From/To	運輸工具類別 Type of Carrier	抵港乘客 Passenger Arrivals				離港乘客 Passenger Departures			
		乘客人次 (千位) Passengers ('000)		載客率 Passenger Load Factor		乘客人次 (千位) Passengers ('000)		載客率 Passenger Load Factor	
			(%)		(%)		(%)		(%)
澳門 Macau	雙體船 Catamaran	675	(-5.7)	37.3%	(-2.7)	327	(+0.4)	29.8%	(-4.6)
小計 - 澳門 Sub-total - Macau		675	(-5.7)	37.3%	(-2.7)	327	(+0.4)	29.8%	(-4.6)
虎門 Humen	雙體船 Catamaran	226	(+3.0)	40.2%	(+2.0)	88	(-2.7)	15.6%	(-3.7)
南沙 Nansha	雙體船 Catamaran	6	(-23.0)	13.9%	(-10.6)	1	(-29.5)	1.9%	(-15.3)
蛇口 Shekou	雙體船 Catamaran	685	(+4.0)	52.8%	(+4.5)	228	(+10.3)	17.9%	(+10.6)
深圳 Shenzhen	雙體船 Catamaran	137	(+6.0)	27.6%	(+5.0)	48	(+4.4)	9.4%	(+0.5)
中山 Zhongshan	雙體船 Catamaran	93	(+43.7)	23.3%	(+17.1)	61	(+36.9)	15.8%	(+36.9)
珠海 Zhuhai	雙體船 Catamaran	101	(+8.5)	22.1%	(+8.6)	80	(+22.8)	17.5%	(+23.0)
小計 - 內河港口 Sub-total - River Trade Ports		1 248	(+6.4)	38.3%	(+4.1)	505	(+11.4)	15.6%	(+11.1)
海天客運碼頭 SkyPier		1 923	(+1.8)	38.0%	(+1.6)	833	(+6.8)	19.2%	(+5.2)

資料來源： 海事處客運碼頭組及香港國際機場客運碼頭服務有限公司

Data Source: Ferry Terminals Section, Marine Department and Hong Kong International Airport Ferry Terminal Services Ltd

表16
TABLE 16

2014年按主要貨物裝卸地點分析貨櫃吞吐量
Container Throughput by Main Cargo Handling Location, 2014

千個標準貨櫃單位
'000 TEUs

類別 Category	貨櫃碼頭 Container Terminals			貨櫃碼頭以外 Other than Container Terminals			總計 Total
	遠洋 Ocean	內河 River	小計 Sub-total	遠洋 Ocean	內河 River	小計 Sub-total	
裝上 Loaded	(%)	(%)	(%)	(%)	(%)	(%)	(%)
載貨貨櫃 Laden Container	6 453 (-3.5)	1 378 (+27.7)	7 831 (+0.8)	477 (+8.0)	1 190 (-7.8)	1 667 (-3.8)	9 499 (^)
空貨櫃 Empty Container	541 (+23.7)	193 (-7.7)	734 (+13.5)	24 (+29.8)	699 (-2.0)	723 (-1.2)	1 457 (+5.7)
小計 Sub-total	6 994 (-1.8)	1 571 (+22.0)	8 565 (+1.8)	501 (+8.9)	1 889 (-5.8)	2 390 (-3.0)	10 955 (+0.7)
卸下 Discharged							
載貨貨櫃 Laden Container	6 414 (+1.2)	1 495 (+29.0)	7 909 (+5.5)	583 (-34.6)	1 051 (-23.2)	1 633 (-27.7)	9 543 (-2.2)
空貨櫃 Empty Container	1 074 (-8.8)	39 (+22.9)	1 113 (-8.0)	25 (+35.9)	591 (+19.9)	616 (+20.5)	1 728 (+0.4)
小計 Sub-total	7 488 (-0.3)	1 534 (+28.8)	9 022 (+3.6)	608 (-33.2)	1 641 (-11.8)	2 249 (-18.8)	11 271 (-1.8)
合計 Overall							
載貨貨櫃 Laden Container	12 867 (-1.2)	2 874 (+28.4)	15 741 (+3.1)	1 060 (-20.5)	2 241 (-15.7)	3 301 (-17.3)	19 041 (-1.1)
空貨櫃 Empty Container	1 615 (^)	232 (-3.6)	1 847 (-0.5)	49 (+32.8)	1 289 (+6.9)	1 338 (+7.7)	3 185 (+2.8)
總計 Total	14 482 (-1.1)	3 105 (+25.3)	17 587 (+2.7)	1 109 (-19.1)	3 530 (-8.7)	4 639 (-11.4)	22 226 (-0.6)

表 17
TABLE 17

2014 年按貨櫃碼頭以外的主要貨物裝卸地點分析裝卸的貨櫃
Containers Discharged/Loaded at Main Cargo Handling Locations Other than Container Terminals, 2014

千個標準貨櫃單位
'000 TEUs

主要貨物裝卸地點 (貨櫃碼頭以外) Main Cargo Handling Location (Other than Container Terminals)	遠洋 Ocean				內河 River				總計 Total	
	卸下 Discharged		裝上 Loaded		卸下 Discharged		裝上 Loaded			
	載貨貨櫃 Laden	空貨櫃 Empty	載貨貨櫃 Laden	空貨櫃 Empty	載貨貨櫃 Laden	空貨櫃 Empty	載貨貨櫃 Laden	空貨櫃 Empty	載貨貨櫃 Laden	空貨櫃 Empty
泊位和倉庫碼頭 Berths and Wharves	(%) 68 (+12.4)	(%) 8 (+15.7)	(%) 92 (+70.3)	(%) 14 (+190.5)	(%) 859 (-22.5)	(%) 539 (+15.7)	(%) 1 060 (-8.1)	(%) 570 (-3.8)	(%) 2 080 (-12.5)	(%) 1 131 (+5.7)
碇泊處 Anchorage	515 (-38.0)	17 (+47.2)	385 (-0.7)	10 (-26.6)	191 (-25.8)	51 (+92.7)	130 (-5.5)	128 (+6.4)	1 221 (-24.4)	207 (+19.9)
浮泡 Buoys	0 (-)	0 (-)	0 (-)	0 (-)	0 (-100.0)	0 (-)	† (-53.6)	† (-)	† (-56.4)	† (-)
總計 Total	583 (-34.6)	25 (+35.9)	477 (+8.0)	24 (+29.8)	1 051 (-23.2)	591 (+19.9)	1 190 (-7.8)	699 (-2.0)	3 301 (-17.3)	1 338 (+7.7)

表 18
TABLE 18

2014 年按貨物種類及運輸方式劃分的裝卸港口貨物
Port Cargo Discharged/Loaded by Cargo Type and Mode of Transport, 2014

千公噸
'000 Tonnes

貨物種類 Cargo Type	海運 Seaborne		河運 River		總計 Total	
	卸下 Discharged	裝上 Loaded	卸下 Discharged	裝上 Loaded	卸下 Discharged	裝上 Loaded
	(%)	(%)	(%)	(%)	(%)	(%)
包裝散貨 Break bulk cargo	9 999 (+17.9)	664 (+33.9)	1 704 (+9.4)	3 087 (-2.5)	11 703 (+16.6)	3 751 (+2.4)
貨櫃貨物 Containerised cargo	78 922 (-3.0)	65 623 (-1.9)	25 391 (+2.4)	30 789 (+6.0)	104 313 (-1.7)	96 412 (+0.5)
無包裝液態散貨 Unpacked liquid bulk cargo	14 739 (+1.1)	248 (-41.1)	614 (+175.3)	216 (-11.5)	15 353 (+3.7)	464 (-30.3)
無包裝固態散貨 Unpacked solid bulk cargo	26 866 (+130.6)	258 (-29.9)	25 948 (+32.2)	12 666 (-3.8)	52 815 (+68.9)	12 924 (-4.5)
總計 Total	130 527 (+12.5)	66 793 (-2.0)	53 657 (+16.1)	46 758 (+2.5)	184 185 (+13.5)	113 552 (-0.2)

資料來源：政府統計處船隻及貨運統計組
Data Source: Shipping and Cargo Statistics Section, Census and Statistics Department

表 19
TABLE 19

海港繫泊浮泡統計數字
Harbour Mooring Buoys Statistics

A. 浮泡數目 (年底數字) Number of Buoys (Figures as at End of the Year)	2013	2014
"A 級" 繫泊浮泡數目 No. of "A Class" mooring buoys	13	13
"B 級" 繫泊浮泡數目 No. of "B Class" mooring buoys	4	4

B. 使用情況 Usage	2013	2014
"A 級" 浮泡訂用日數 Days booked for "A Class" buoys	1 610	1 519
"B 級" 浮泡訂用日數 Days booked for "B Class" buoys	126	97
"A 級" 浮泡訂用百分率 Percentage of "A Class" buoys used based on booking	37.9%	35.5%
"B 級" 浮泡訂用百分率 Percentage of "B Class" buoys used based on booking	8.7%	6.7%
上述數字只顯示訂用情況，實際使用率則如下： Whilst the above figures are indicative of booking usage, the actual physical occupancy rates are as follows:		
"A 級" 浮泡 "A Class" buoys	24.2%	24.0%
"B 級" 浮泡 "B Class" buoys	2.0%	4.3%

C. 浮泡保養 Buoys Maintenance	2013	2014
按期保養的燈浮標 Light Buoys maintained	114	119
按期保養的養魚區浮泡 Mariculture Buoys maintained	178	178
按期保養的小型繫泊浮泡 Minor Mooring maintained	166	166
按期保養的大型繫泊浮泡 Major Mooring maintained	39	40
按期保養的 "A 級" 海港繫泊浮泡 "A Class" Harbour Mooring maintained	13	13
按期保養的 "B 級" 海港繫泊浮泡 "B Class" Harbour Mooring maintained	4	4

資料來源： (A) & (B) 海事處船隻航行監察中心
Data Sources: Vessel Traffic Centre, Marine Department
(C) 海事處港口後勤組
Port Logistics Section, Marine Department

表 20
TABLE 20

2014 年按分布地點分析香港私人繫泊設備數目
Number of Private Moorings Laid in Hong Kong by Location, 2014

分布地點	Location	私人繫泊設備 數目 Number of Private Moorings
香港仔南避風塘及銅鑼灣避風塘 Aberdeen South Typhoon Shelter and Causeway Bay Typhoon Shelter		
香港仔南避風塘 (白沙灣)	Aberdeen South Typhoon Shelter (Pak Sha Wan)	1
香港仔南避風塘 (布廠灣)	Aberdeen South Typhoon Shelter (Po Chong Wan)	449
銅鑼灣避風塘	Causeway Bay Typhoon Shelter	186
小計	Sub-total	636
在所有其他避風塘及維多利亞港口界限以內的其他地方 Other Typhoon Shelters and Elsewhere within the Limits of Victoria Port		
長洲避風塘	Cheung Chau Typhoon Shelter	11
荔枝角	Lai Chi Kok	3
新油麻地避風塘	New Yau Ma Tei Typhoon Shelter	16
新油麻地避風塘 (海堤對開海面)	New Yau Ma Tei Typhoon Shelter (Outside Breakwater)	29
油麻地碇泊處以北海面	North of Yau Ma Tei Anchorage	1
藍巴勒海峽避風塘 (海堤對開海面)	Rambler Channel Typhoon Shelter (Outside Breakwater)	6
三家村避風塘	Sam Ka Tsuen Typhoon Shelter	1
汀九	Ting Kau	62
土瓜灣	To Kwa Wan	4
青衣以北海面	Tsing Yi North	4
荃灣	Tsuen Wan	88
屯門避風塘	Tuen Mun Typhoon Shelter	7
小計	Sub-total	232

表 20 – 續
TABLE 20 – Cont'd

分布地點	Location	私人繫泊設備 數目 Number of Private Moorings
在香港水域內的其他地方 Elsewhere in the Waters of Hong Kong		
香港仔西避風塘 (海堤對開海面)	Aberdeen West Typhoon Shelter (Outside Breakwater)	14
大灘海峽 赤徑口	Chek Keng Hau, Long Harbour	1
大嶼山 長沙欄	Cheung Sha Lan, Lantau Island	32
大嶼山 愉景灣	Discovery Bay, Lantau Island	6
南丫島 下尾灣 (電力站對開海面)	Ha Mei Wan, Lamma Island (Off Power Station)	4
西貢 白沙灣	Hebe Haven, Sai Kung	680
將軍澳	Junk Bay	1
西貢 滘西洲	Kau Sai Chau, Sai Kung	4
大灘海峽 高塘口	Ko Tong Hau, Long Harbour	1
南丫島 鹿洲灣	Luk Chau Wan, Lamma Island	1
熨波洲	Middle Island	93
大嶼山 稔樹灣	Nim Shue Wan, Lantau Island	14
北大嶼山	North Lantau	1
大埔 船灣海	Shuen Wan Hoi, Tai Po	40
赤柱正灘	Stanley Main Beach	4
大欖	Tai Lam	3
大埔 大美督	Tai Mei Tuk, Tai Po	32
西貢 大網仔	Tai Mong Tsai, Sai Kung	7
西貢 大網仔 (阿公灣)	Tai Mong Tsai, Sai Kung (A Kung Wan)	3
大潭港	Tai Tam Harbour	45
西貢 斬竹灣	Tsam Chuk Wan, Sai Kung	10
青衣以西海面	Tsing Yi West	3
西貢 早禾坑	Tso Wo Hang, Sai Kung	18
屯門避風塘 (海堤對開海面)	Tuen Mun Typhoon Shelter (Outside Breakwater)	6
黃竹角海 往灣	Wong Wan, Wong Chuk Kok Hoi	1
南丫島 榕樹灣	Yung Shue Wan, Lamma Island	2
小計	Sub-total	1 026
總計	Total	1 894

資料來源： 海事處私用繫泊分組
Data Source: Private Mooring Sub-unit, Marine Department

表 21
TABLE 21

碇泊處一覽 (截至 2014 年年底)
List of Anchorages (as at year end 2014)

碇泊處 Anchorages	面積 (公頃) Area (hectares)
A. 檢疫及入境船隻碇泊處 Quarantine and Immigration Anchorages	
1. 東面檢疫及入境船隻碇泊處 Eastern Quarantine and Immigration Anchorage	35.1
2. 屯門入境船隻碇泊處 Tuen Mun Immigration Anchorage	89.9
3. 西面檢疫及入境船隻碇泊處 Western Quarantine and Immigration Anchorage	121.1
小計 Sub-total	246.1
B. 危險品碇泊處 Dangerous Goods Anchorages	
1. 將軍澳危險品碇泊處 Junk Bay Dangerous Goods Anchorage	28.9
2. 交椅洲危險品碇泊處 Kau Yi Chau Dangerous Goods Anchorage	288.2
3. 大鵬灣危險品碇泊處 Mirs Bay Dangerous Goods Anchorage	316.5
4. 糧船灣海危險品碇泊處 Rocky Harbour Dangerous Goods Anchorage	26.9
5. 南丫島南危險品碇泊處 South Lamma Dangerous Goods Anchorage	228.5
6. 荃灣危險品碇泊處 Tsuen Wan Dangerous Goods Anchorage	61.9
7. 西面危險品碇泊處 Western Dangerous Goods Anchorage	220.8
8. 危險品留用碇泊處 Reserved Dangerous Goods Anchorage	37.3
小計 Sub-total	1 209.0
C. 維修碇泊處 Servicing Anchorages	
1. 奇力 1 號碇泊處 Kellett Anchorage No.1	74.7
2. 奇力 2 號碇泊處 Kellett Anchorage No.2	230.4
3. 奇力 3 號碇泊處 Kellett Anchorage No.3	102.8
4. 馬灣碇泊處 Ma Wan Anchorage	138.4
5. 南丫島北碇泊處 North Lamma Anchorage	375.1
6. 南丫島西北碇泊處 North West Lamma Anchorage	553.9
7. 半山石碇泊處 Pun Shan Shek Anchorage	352.1
8. 深水角 1 號碇泊處 Sham Shui Kok Anchorage No.1	72.6
9. 深水角 2 號碇泊處 Sham Shui Kok Anchorage No.2	35.6
10. 西面 1 號碇泊處 Western Anchorage No.1	310.6
11. 西面 2 號碇泊處 Western Anchorage No.2	278.7
12. 西面 3 號碇泊處 Western Anchorage No.3	272.4
13. 油麻地碇泊處 Yau Ma Tei Anchorage	105.0
小計 Sub-total	2 902.3

表 21 – 續
TABLE 21 – Cont'd

碇泊處 Anchorages		面積 (公頃) Area (hectares)
D. 領航特別碇泊處 Pilotage Special Anchorages		
1. 南丫島東南碇泊處	South East Lamma Anchorage	285.5
2. 南丫島西南碇泊處	South West Lamma Anchorage	228.4
3. 龍鼓水道碇泊處	Urmston Road Anchorage	190.0
小計	Sub-total	703.9
E. 遮蔽碇泊處 Sheltered Anchorages		
1. 柴灣貨物裝卸灣	Chai Wan Cargo Basin	11.2
2. 吉澳	Kat O	1.6
3. 沙頭角	Sha Tau Kok	0.6
4. 大澳	Tai O	4.0
5. 荃灣	Tsuen Wan	3.7
6. 熨波洲	Middle Island	6.9
7. 白沙灣	Pak Sha Wan (Hebe Haven)	84.0
8. 西貢	Sai Kung	4.3
9. 聖士提反灣	St. Stephen's Bay	1.3
10. 大美督	Tai Mei Tuk	12.3
11. 大潭港	Tai Tam Harbour	5.7
12. 汀九	Ting Kau	0.7
13. 斬竹灣	Tsam Chuk Wan (Jade Bay)	7.5
小計	Sub-total	143.8
總計	Total	5 205.1

資料來源： 海事處策劃、發展協調及港口保安部

Data Source: Planning, Development & Port Security Branch, Marine Department

表 22
TABLE 22

避風塘一覽 (截至 2014 年年底)
List of Typhoon Shelters (as at year end 2014)

避風塘	Typhoon Shelters	面積 (公頃) Area (hectares)
1. 南香港仔避風塘	Aberdeen South Typhoon Shelter	26.1
2. 西香港仔避風塘	Aberdeen West Typhoon Shelter	34.2
3. 銅鑼灣避風塘	Causeway Bay Typhoon Shelter	10.6
4. 長洲避風塘	Cheung Chau Typhoon Shelter	50.0
5. 喜靈洲避風塘	Hei Ling Chau Typhoon Shelter	76.6
6. 觀塘避風塘	Kwun Tong Typhoon Shelter	33.8
7. 新油麻地避風塘	New Yau Ma Tei Typhoon Shelter	64.6
8. 藍巴勒海峽避風塘	Rambler Channel Typhoon Shelter	12.9
9. 三家村避風塘	Sam Ka Tsuen Typhoon Shelter	1.9
10. 筲箕灣避風塘	Shau Kei Wan Typhoon Shelter	17.2
11. 船灣避風塘	Shuen Wan Typhoon Shelter	10.3
12. 土瓜灣避風塘	To Kwa Wan Typhoon Shelter	14.8
13. 屯門避風塘	Tuen Mun Typhoon Shelter	56.8
14. 鹽田仔避風塘	Yim Tin Tsai Typhoon Shelter	9.2
總計	Total	419.0

備註： 只包括於二零零七年一月二日在政府憲報 (編號: L.N. 285/2006) 中所公布的避風塘。
Remark: Including only those typhoon shelters promulgated in the Government Gazette (L.N. 285 of 2006) on 2.1.2007

資料來源： 海事處策劃、發展協調及港口保安部
Data Source: Planning, Development & Port Security Branch, Marine Department

表 23
TABLE 23

公眾貨物裝卸區一覽 (截至 2014 年年底)
List of Public Cargo Working Areas (as at year end 2014)

公眾貨物裝卸區 Public Cargo Working Area	面積 (公頃) Area (hectares)	符合發牌條件之 停泊位長度 (米) Licensable Seafrontage (metres)
1. 柴灣公眾貨物裝卸區 Chai Wan Public Cargo Working Area	2.1	548
2. 新油麻地公眾貨物裝卸區 New Yau Ma Tei Public Cargo Working Area	6.8	1 212
3. 藍巴勒海峽公眾貨物裝卸區 Rambler Channel Public Cargo Working Area	4.1	1 040
4. 昂船洲公眾貨物裝卸區 Stonecutters Island Public Cargo Working Area	3.6	640
5. 屯門公眾貨物裝卸區 Tuen Mun Public Cargo Working Area	3.3	616
6. 西區公眾貨物裝卸區 Western District Public Cargo Working Area	3.3	880
總計 Total	23.2	4 936

資料來源： 海事處貨物裝卸組
Data Source: Cargo Handling Section, Marine Department

表 24
TABLE 24

垃圾收集、油污和檢控個案統計數字
Refuse Collection, Oil Pollution and Prosecution Statistics

A. 垃圾收集和油污事故
Refuse Collection and Oil Pollution Incident

	2013	2014
1. 從海港收集的垃圾 (公噸) Refuse collected from harbour (tonnes)	10 900	11 265
2. 從船舶收集的垃圾 (公噸) Refuse collected from vessels (tonnes)	4 348	4 352
3. 接報的疑似油污事故 (宗) Alleged oil pollution incidents reported (cases)	143	139

B. 檢控統計數字
Prosecution Statistics

罪行 Offence	陳詞／聆訊個案 No. of Cases Heard		定罪個案 No. of Cases Convicted		罰款 Fine (HK\$)	
	2013	2014	2013	2014	2013	2014
1. 違反碰撞規例 Breach of collision regulations	24	31	23	31	135,600	186,900
2. 違反牌照／准許證條件 Breach of licence/permit conditions	134	142	131	140	112,050	140,660
3. 未獲允許運載乘客／超額運載乘客 Carrying passengers without permission/excessive passengers	51	50	50	50	43,100	76,150
4. 不遵從指示 Failing to comply with direction	34	48	34	48	176,050	288,600
5. 沒有採取合理措施以確保受僱人在工程進行時戴著適當的安全頭盔 Failing to ensure the person employed to wear an appropriate safety helmet	52	43	52	43	31,170	22,250
6. 未獲允許讓該船隻緊靠著另一船舶而停放 Lying alongside another vessel without permission	57	58	57	58	57,150	62,090
7. 靠泊於已展示禁止船隻靠泊告示的岸壁／登岸梯級 Lying alongside seawall/landing steps prohibited by notice	18	6	18	6	16,900	5,800
8. 船上沒有合格船長／輪機員 No qualified master/engineer on board	238	235	231	227	197,650	222,900
9. 在沒有有效驗船證明書的情況下操作 Operating a vessel without valid certificate of survey	31	28	31	25	27,900	26,950
10. 沒持有有效證明書的人進行貨物處理 Person carrying out cargo handling without certificates	55	63	55	63	50,800	62,550
11. 超速行駛 Steaming in excessive speed	48	29	47	29	75,300	51,850
12. 使用沒有第三者風險保險的船隻 Using a vessel not insured against third party risk	56	51	55	49	78,050	72,600
13. 船隻未有領牌／並無有效牌照 Vessel was not licensed/did not have a valid licence	320	305	316	293	499,200	543,070
14. 其他海事罪行 Other marine offences	381	346	376	338	503,140	494,070
總計 Total	1 499	1 435	1 476	1 400	2,004,060	2,256,440

資料來源： (A) 海事處港口後勤組
(B) 海事處檢控小組

Data Source: (A) Port Logistics Section, Marine Department
(B) Prosecution Unit, Marine Department

表 25
TABLE 25

按噸位等級分析香港持牌船隻 (截至 2014 年年底)
Hong Kong Licensed Vessels by Tonnage Classification (as at year end 2014)

船隻類型 Vessel Type		60 淨噸及以下 60 Net Tons and Below	61 至 300 淨噸 61 - 300 Net Tons	300 淨噸以上 Over 300 Net Tons	總計 Total
第 I 類 Class I	(a) 渡輪船隻 Ferry Vessel	11	30	9	50
	(b) 水上食肆 Floating Restaurant	0	0	2	2
	(c) 小輪 Launch	180	50	0	230
	(d) 多用途船隻 Multi-purposes Vessel	10	7	2	19
	(e) 原始船隻 Primitive Vessel	66	1	0	67
	(f) 固定船隻 Stationary Vessel	0	0	0	0
	小計 Sub-total	267	88	13	368
第 II 類 Class II	(a) 起重機躉船 Crane Barge	0	6	9	15
	(b) 危險品運輸船 Dangerous Goods Carrier	1	10	18	29
	(c) 挖泥船 Dredger	0	4	5	9
	(d) 乾貨貨船 Dry Cargo Vessel	45	49	10	104
	(e) 非自航駁船 Dumb Lighter	4	51	452	507
	(f) 食油運輸船 Edible Oil Carrier	0	0	14	14
	(g) 平面工作躉 Flat-top Work Barge	18	27	28	73
	(h) 浮塢 Floating Dock	0	0	3	3
	(i) 水上工場 Floating Workshop	0	1	0	1
	(j) 開底躉船 Hopper Barge	0	2	30	32
	(k) 登岸平台 Landing Platform	43	1	0	44
	(l) 登岸浮躉 Landing Pontoon	12	26	14	52
	(m) 有毒液體物質運輸船 Noxious Liquid Substance Carrier	0	0	1	1
	(n) 石油運輸船 Oil Carrier	16	102	47	165
	(o) 領港船 Pilot Boat	20	0	0	20

表 25 – 續
TABLE 25 – Cont'd

船隻類型 Vessel Type		60 淨噸及以下 60 Net Tons and Below	61 至 300 淨噸 61 - 300 Net Tons	300 淨噸以上 Over 300 Net Tons	總計 Total
第 II 類 Class II (續) (Cont'd)	(p) 特別用途船隻 Special Purpose Vessel	4	2	4	10
	(q) 固定船隻 Stationary Vessel	111	26	5	142
	(r) 交通船 Transportation Boat	30	0	0	30
	(s) 交通舢舨 Transportation Sampan	79	0	0	79
	(t) 拖船 Tug	66	102	0	168
	(u) 供水船 Water Boat	12	7	0	19
	(v) 工作船 Work Boat	296	9	0	305
	小計 Sub-total	757	425	640	1 822
第 III 類 Class III	(a) 運魚船 Fish Carrier	15	10	0	25
	(b) 漁船舢舨 Fishing Sampan	1 958	0	0	1 958
	(c) 漁船 Fishing Vessel	637	1 366	0	2 003
	(d) 舷外機開敞式舢舨 Outboard Open Sampan	2 613	0	0	2 613
	小計 Sub-total	5 223	1 376	0	6 599
第 IV 類 Class IV	(a) 機械輔助帆船 Auxiliary Powered Yacht	N.A.	N.A.	N.A.	753
	(b) 遊樂船 Cruiser	N.A.	N.A.	N.A.	2 507
	(c) 開敞式遊樂船 Open Cruiser	N.A.	N.A.	N.A.	5 699
	小計 Sub-total	N.A.	N.A.	N.A.	8 959
住家船隻 ⁽¹⁾ Dwelling Vessel ⁽¹⁾	N.A.	N.A.	N.A.	4	
總計 Total	6 247⁽²⁾	1 889⁽²⁾	653⁽²⁾	17 752⁽³⁾	

註釋： (1) 全部在銅鑼灣避風塘。
Notes: All in Causeway Bay Typhoon Shelter.

資料來源： 海事處牌照及關務組
Data Source: Licensing and Port Formalities Section, Marine Department

(2) 不包括第 IV 類持牌船隻及住家船隻的數字。
Not including Class IV licensed vessels and dwelling vessels.

(3) 已包括 31 艘閒置船隻。
Including 31 laid-up vessels.

表 26
TABLE 26

船舶安全監督統計數字
Ship Safety Statistics

A. 貨船安全統計數字 Cargo Ships Safety Statistics	2013	2014
海事處註冊貨船品質審查／檢驗 Hong Kong Registered Cargo Ships Quality Checked/Inspected <ol style="list-style-type: none"> <li data-bbox="86 412 1169 472">1. 品質審查的註冊貨船數目 No. of quality checks on Hong Kong registered cargo ships <li data-bbox="86 483 1169 544">2. 品質檢驗和稽核貨船數目 No. of flag state quality control ship inspections and company visits <li data-bbox="86 555 1169 616">3. 審核船體、機械和設備圖則數目 No. of plans examined in respect of hull, machinery and equipment 		
貨船設備安全證明書 Cargo Ship Safety Equipment Certificate (SEC) <ol style="list-style-type: none"> <li data-bbox="86 707 1169 768">1. 所簽發的豁免證明書數目 No. of exemption certificates issued <li data-bbox="86 779 1169 840">2. 應其他國家機關要求而檢驗的外來船舶，以簽發設備安全證明書 Foreign ships surveyed at the request of other national authorities for the issue of SEC 		
貨船無線電安全證明書 Cargo Ship Safety Radio Certificate (SRC) <ol style="list-style-type: none"> <li data-bbox="86 931 1169 992">1. 所簽發的豁免證明書數目 No. of exemption certificates issued <li data-bbox="86 1003 1169 1064">2. 應其他國家機關要求而檢驗的外來船舶，以簽發無線電安全證明書 Foreign ships surveyed at the request of other national authorities for the issue of SRC 		
其他 Others <ol style="list-style-type: none"> <li data-bbox="86 1155 1169 1249">1. 所簽發的《海員培訓、發證和值班標準國際公約》最低安全配員證明書 Standards of Training, Certification and Watchkeeping Minimum Safe Manning Certificate issued <li data-bbox="86 1261 1169 1355">2. 對構造安全、設備安全、無線電安全證明書的監察，包括中期檢驗 Safety Construction, Equipment and Radio Certificates monitored (including intermediate surveys) <li data-bbox="86 1366 1169 1426">3. 對國際載重線證明書的監察，包括定期檢驗 International Load Line Certificate monitored (including periodic surveys) <li data-bbox="86 1438 1169 1621">4. 對國際防止油污證明書、油污損害民事責任保險證明書或其他保證證明書及燃油污染損害民事責任保險證明書或其他經濟擔保證明書的監察 – 續期、年度/中期檢驗 International Oil Pollution Prevention (IOPP) Certificate, Certificate of Insurance or Other Financial Security in Respect of Civil Liability for Oil Pollution Damage and Certificate of Insurance or Other Financial Security in Respect of Civil Liability for Bunker Oil Pollution Damage monitored (including renewal, annual/intermediate surveys) <li data-bbox="86 1632 1169 1693">5. 對新船公司所作的國際安全管理稽核 International Safety Management (ISM) audits of new shipping companies <li data-bbox="86 1704 1169 1765">6. 其他檢驗 (例如合格證明書等) Other surveys (e.g. Certificates of Fitness etc.) 		

表 26 – 續
TABLE 26 – Cont'd

B. 客船安全統計數字 Passenger Ships Safety Statistics	2013	2014
乘客定額及船舶安全證明書 Passenger and Ship Safety Certificates		
1. 客船安全證明書 – 國際航線 Passenger Ship Safety Certificate (PSSC) – International Voyage	0	0
2. 客船安全證明書／高速船安全證明書 – 內河航限 PSSC/High Speed Craft Safety Certificate (HSCSC) – River Trade Limits	PSSC-1/ HSCSC-63	PSSC-1/ HSCSC-72
3. 延長客船安全證明書有效期 Extensions to PSSC	2	0
4. 客船安全證明書檢驗船舶總數 Total no. of vessels surveyed for PSSC	65	72
5. 受檢驗的客船無線電裝置 Passenger ship radio installations surveyed	65	72
6. 所簽發的載重線證明書數目 No. of Load Line Certificates issued	15	13
7. 所簽發的載重線豁免證明書數目 No. of Load Line Exemption Certificates issued	15	13
8. 所簽發的國際防止油污證明書及增補數目 No. of IOPP Certificates with Supplement issued	16	13
9. 所簽發的國際防止油污豁免證明書數目 No. of IOPP Exemption Certificates issued	4	2
10. 所簽發的最低安全配員證明書數目 No. of Minimum Safe Manning Certificates issued	12	3
11. 對船公司所作的國際安全管理稽核 ISM audits of shipping companies	4	6
12. 對船舶所作的國際安全管理稽核 ISM audits of ships	32	14
13. 所簽發的國際安全管理稽核符合證明數目 No. of ISM Document of Compliance issued	1	1
14. 所簽發的國際安全管理稽核安全管理證明書數目 No. of ISM Safety Management Certificates issued	17	10
15. 所簽發的臨時國際安全管理稽核安全管理證明書數目 No. of Interim ISM Safety Management Certificates issued	1	2
雜項檢查，圖則審核和設備 Miscellaneous Inspection, Plans Approval and Equipment		
1. 審核客船船體、機械和設備圖則數目 No. of plans examined for hull, machinery and equipment of passenger ships	98	78
2. 簽發檢查證明書、雜項檢驗／檢查數目 No. of certificates of inspection issued, miscellaneous surveys/inspections	99	165

表 26 – 續
TABLE 26 – Cont'd

C. 港口國監督統計數字 Port State Control Statistics	2013	2014
<p>在香港特別行政區港口內進行的港口國監督檢查： Port State Control Inspections in the Harbour of the Hong Kong Special Administrative Region:</p>		
<p>1. 在履行身為港口國監督委員而對《東京諒解備忘錄》應有的責任下，受港口國監督檢查的個別外來船舶數目 No. of individual foreign ships inspected under the obligation to Tokyo Memorandum of Understanding (MOU), as a member Port State of the Committee</p>	865	830
<p>– 遠洋船舶 <i>ocean vessels</i></p>	740	736
<p>– 沿岸船舶 <i>coastal vessels</i></p>	125	94
<p>2. 對外來船舶進行港口國監督檢查 (包括複檢) 總數 Total no. of Port State Control inspections carried out for foreign ships, including re-inspections</p>	930	909
<p>3. 被扣留在港的低於安全標準的船舶數目 No. of sub-standard ships detained in Hong Kong</p>	57	64

資料來源： (A) 海事處貨船安全組
Data Sources: Cargo Ships Safety Section, Marine Department

(B) 海事處客船安全組
Passenger Ships Safety Section, Marine Department

(C) 海事處港口國監督組
Port State Control Section, Marine Department

表 27
TABLE 27

本地船隻安全／海事工業安全／海事意外統計數字
Local Vessels Safety/Marine Industrial Safety/Marine Accidents Statistics

I. 船舶的檢驗和檢查統計 Statistics on Surveys and Inspections of Vessels	2013	2014
A. 給本地船隻簽發／批註的證明書／適合聲明／紀錄等 Certificates/Declarations/Records etc. Issued/Endorsed to Local Vessels <ol style="list-style-type: none"> 1. 簽發／批註乾舷勘定證明書數目 No. of Freeboard Assignment Certificates issued/endorsed 2. 簽發安全設備檢驗紀錄數目 No. of Survey Records of Safety Equipment issued 3. 簽發／批註載重線證明書數目 No. of Load Line Certificates issued/endorsed 4. 簽發噸位丈量記錄數目 No. of Records of Tonnage Measurement issued 5. 簽發／批註散裝有毒液體物質的防污證明書數目 No. of Pollution Prevention Certificates for the Carriage of Noxious Liquid Substances in Bulk issued/endorsed 6. 簽發適合運載危險品聲明數目 No. of Declarations of Fitness for the Carriage of Dangerous Goods issued 7. 簽發香港防止油類污染證明書數目 No. of Hong Kong Oil Pollution Prevention Certificates issued 8. 簽發／批註香港防止空氣污染證明書數目 No. of Hong Kong Air Pollution Prevention Certificates issued/endorsed 9. 給本地船隻簽發驗船證明書數目 No. of Certificates of Survey issued to Local Vessels <ul style="list-style-type: none"> – 第 I 類 Class I – 第 II 類 Class II – 第 III 類 Class III – 第 IV 類 Class IV 		
總計 Total	3 245	3 218
B. 審批圖則／文件 Plans/Documents Examined <ol style="list-style-type: none"> 1. 船隻傾斜測試及穩性確定數目 No. of Vessels Inclining tested and Stability Information assessed 2. 審核本地船隻的船體、機械和設備圖則數目 No. of Plans of Hull, Machinery and Equipment examined for Local Vessels 		
總計 Total	3 242	2 563

表 27 – 續
TABLE 27 – Cont'd

I. 船舶的檢驗和檢查統計 (續) Statistics on Surveys and Inspections of Vessels (Cont'd)	2013	2014
C. 檢驗本地船隻數目 (包括新船、現有船隻、抽查船隻及被扣留的船隻) Local Vessels Inspected (New, Existing, Spot-check Vessels and Detained Vessels)		
1. 執行其他政府部門要求檢查的船隻數目 No. of Inspections of Vessels for Other Government Departments	27	33
2. 完成首次檢驗而新領牌的船隻數目 No. of Newly Licensed Vessels after Completing Initial Survey	421	436
3. 在本港檢驗本地船隻的數目 No. of Local Vessels Inspected Locally	2 140	2 086
總計 Total	2 588	2 555
D. 檢驗本地船隻次數 (包括新船、現有船隻、抽查船隻及被扣留的船隻) Inspection Visits Made to Local Vessels (New, Existing, Spot-check Vessels and Detained Vessels)		
1. 檢驗碰撞後破損的本地船隻次數 No. of Inspection Surveys of Damaged Local Vessels after Collision	6	9
2. 抽查及複驗本地船隻次數 No. of Spot Checks and Audit Checks on Local Vessels	315	136
3. 海外檢驗本地船隻次數 No. of Overseas Visits for Inspection of Local Vessels	96	86
4. 本地船隻在本港首次及定期檢查次數 No. of Initial and Periodical Inspection Visits Made Locally to Local Vessels	3 052	3 177
總計 Total	3 469	3 408
E. 舉辦安全講座及研討會 Talks and Seminars Conducted	1	0

資料來源： 海事處本地船舶安全組

Data Source: Local Vessels Safety Section, Marine Department

表 27 – 續
TABLE 27 – Cont'd

II. 檢查正在進行工程的船舶及調查海上工業意外事故等 Inspections of Vessels Engaged in Works and Investigations of Marine Industrial Accidents etc.	2013	2014
A. 貨櫃檢查數目 No. of Containers Inspected	8 208	9 290
B. 海事工業安全檢查 (不包括貨櫃檢查) Marine Industrial Safety Inspections (not including inspection of containers)		
1. 檢查正在修理的船舶 Inspections of Vessels Undergoing Repair	663	530
2. 檢查海事工程船舶 Inspections of Vessels Engaged in Marine Construction	154	127
3. 檢查遠洋船裝卸貨物工具 Cargo Gear Inspections on Ocean-going Vessels	226	188
4. 檢查遠洋船裝卸貨物 Stevedoring Inspections on Ocean-going Vessels	1 892	1 988
5. 檢查駁船裝卸貨物工具 Cargo Gear Inspections on Lighters	409	456
6. 檢查駁船裝卸貨物 Stevedoring Inspections on Lighters	1 885	840
總計 Total	5 229	4 129
C. 海事工業意外的調查及查詢數目 Marine Industrial Accidents Investigated/Inquired		
1. 調查致命的非海事工業意外 Non-marine Industrial Fatal Accidents investigated	0	0
2. 調查致命的海事工業意外 Marine Industrial Fatal Accidents investigated	2	9
3. 調查嚴重意外 Serious Accidents investigated	0	0
4. 調查嚴重意外 (無傷亡) Serious Accidents (No Casualty) investigated	0	0
5. 查詢非嚴重意外 Non-serious Accidents inquired	157	103 #
總計 Total	159	112 #

表 27 – 續
TABLE 27 – Cont'd

II. 檢查正在進行工程的船舶及調查海上工業意外事故等 (續) Inspections of Vessels Engaged in Works and Investigations of Marine Industrial Accidents etc. (Cont'd)	2013	2014
D. 發生海事工業意外的數目 Marine Industrial Accidents Occurred <ol style="list-style-type: none"> 1. 修船意外總數 Total Ship Repair Accidents 2. 裝卸貨物意外總數 Total Cargo Handling Accidents 3. 海事工程意外總數 Total Marine Construction Accidents 		
總計 Total	180	136 #
E. 簽發修船許可證／轉介檢控小組的個案／發出警告信的數目 Letters of Permission to Undertake Repairs Issued/Cases Referred to Prosecutions Unit/Warning Letters Issued <ol style="list-style-type: none"> 1. 簽發修船許可證 Letters of Permission to Undertake Repairs issued 2. 轉介檢控小組的個案 Cases referred to Prosecutions Unit 3. 發出警告信 Warning Letters issued 		
總計 Total	4 062	3 672
F. 海事工業安全的宣傳及教育 Promotion and Education on Marine Industrial Safety <ol style="list-style-type: none"> 1. 發出安全指令 Safety Directions issued 2. 出版或修訂的安全小冊子／單張／海報／貼紙數目 No. of Safety Pamphlets/Leaflets/Posters/Stickers published or revised 3. 出版或修訂的安全指南／工作守則數目 No. of Safety Guides/Codes of Practice published or revised 4. 安全講座及研討會的舉辦數目 No. of Safety Talks and Seminars conducted 5. 到訪船舶推廣安全 Safety Promotion Visits to Vessels 		
總計 Total	1 365	1 468

資料來源： 海事處海事工業安全組
Data Source: Marine Industrial Safety Section, Marine Department

表 27 – 續
TABLE 27 – Cont'd

III. 香港註冊船舶的損失數目 ⁽¹⁾ Loss of Vessels Registered in Hong Kong ⁽¹⁾		
損失船舶數目 Number Lost	2013	2014
		1

註釋： (1) 指因遇險而導致損失的船舶。

Note: Refers to loss of vessels due to casualty or accident.

資料來源： 海事處船舶註冊及商船海員管理處

Data Source: Shipping Registry and Mercantile Marine Office, Marine Department

IV. 2014 年海上意外事故統計 Marine Accidents Statistics in 2014								
意外事故類別 Type of Accident	香港水域範圍以內 ⁽¹⁾ Within Hong Kong Waters ⁽¹⁾				香港水域範圍以外 ⁽²⁾ Outside Hong Kong Waters ⁽²⁾			
	宗數 No. of Cases	死亡人數 Persons Killed	受傷人數 Persons Injured	失蹤人數 Persons Missing	宗數 No. of Cases	死亡人數 Persons Killed	受傷人數 Persons Injured	失蹤人數 Persons Missing
相撞 Collision	156	0	41	0	26	0	2	25
擱淺／觸礁 Grounding/Stranding	38	0	1	0	13	0	0	0
沉沒／入水 Sinking /Foundering	24	0	3	0	3	2	0	3
火警／爆炸 Fire/Explosion	13	0	1	0	9	1	1	0
翻沉／傾斜 Capsized/Listing	18	1	2	0	0	0	0	0
接觸 Contact	40	0	6	0	20	0	73	0
其他 Others	69	0	1	0	25	0	4	0
總計 Total	358	1	55	0	96	3	80	28

註釋： (1) 包括所有船舶 (如香港註冊及外國註冊船舶、本地領牌船隻、內河船隻、沿海船隻、政府船舶等等) 的意外及傷亡數字。

Notes: Including accidents and casualties figures of all vessels (such as Hong Kong registered and foreign registered vessels, local licensed vessels, river trade vessels, coastal vessels, government launches, etc.).

(2) 只包括在香港註冊或領牌的船舶之意外及傷亡數字。

Including accidents and casualties figures of Hong Kong registered vessels or local licensed vessels only.

資料來源： 海事處海事意外調查組

Data Source: Marine Accident Investigation Section, Marine Department

表 27 – 續
TABLE 27 – Cont'd

V. 海上意外事故調查 Marine Accident Investigation		2013	2014
調查意外事故 《船舶及港口管制條例》、 《商船(本地船隻)條例》及 《商船條例》	Accidents Investigated Shipping and Port Control Ordinance Merchant Shipping (Local Vessel) Ordinance & Merchant Shipping Ordinance	29	34
初步研訊 《商船條例》	Preliminary Inquiries Merchant Shipping Ordinance	0	0
領港研訊 《領港條例》	Pilotage Inquiries Pilotage Ordinance	0	0
海事法庭	Marine Courts	0	0
調查委員會	Board of Inquiry	0	0
對調查委員會裁決提出上訴	Appeal against the Decision of Board of Inquiry	0	0

資料來源： 海事處海事意外調查組

Data Source: Marine Accident Investigation Section, Marine Department

表 28
TABLE 28

海員發證、註冊和僱用統計數字
Seafarers' Certification, Registration and Employment Statistics

A. 遠洋合格證明書 Seagoing Certificates of Competency		2013		2014	
		申請人數 Number of Applications	及格人數 Number of Successes	申請人數 Number of Applications	及格人數 Number of Successes
1. 商船船長及 甲板高級船員	Master Mariner and Deck Officer				
一級甲板高級船員 (商船船長)	Deck Officer Class 1 (Master Mariner)				
筆試	Written Examination	2	1	4	2
口試	Oral Examination	9	8	13	4
其他	Other Services	24	24	20	20
二級甲板高級船員	Deck Officer Class 2				
筆試	Written Examination	9	3	27	7
口試	Oral Examination	6	4	14	6
其他	Other Services	9	9	12	12
三級甲板高級船員	Deck Officer Class 3				
筆試	Written Examination	24	15	59	15
口試	Oral Examination	23	16	28	7
訊號	Signal	28	12	39	11
其他	Other Services	28	28	23	23
小計	Sub-total	162	120	239	107
2. 輪機師	Marine Engineer Officer				
一級輪機師	Marine Engineer Officer – Class 1				
筆試	Written Examination	7	2	12	0
口試	Oral Examination	4	1	9	0
其他	Other Services	16	16	17	17
二級輪機師	Marine Engineer Officer – Class 2				
筆試	Written Examination	10	1	14	1
口試	Oral Examination	8	1	17	4
其他	Other Services	10	10	14	14
三級輪機師	Marine Engineer Officer – Class 3				
口試	Oral Examination	11	6	22	8
其他	Other Services	54	54	39	39
小計	Sub-total	120	91	144	83
總計	Total	282	211	383	190

表 28 – 續
TABLE 28 – Cont'd

B. 內河航行合格證明書 River Trade Certificates of Competency		2013		2014	
		申請人數 Number of Applications	及格人數 Number of Successes	申請人數 Number of Applications	及格人數 Number of Successes
1. 甲板高級船員	Deck Officer				
一級甲板高級船員	Deck Officer Class 1				
筆試	Written Examination	1	1	0	0
口試	Oral Examination	22	13	12	3
其他	Other Services	47	47	25	25
二級甲板高級船員	Deck Officer Class 2				
筆試	Written Examination	16	12	5	2
口試	Oral Examination	30	29	9	2
其他	Other Services	25	25	4	4
三級甲板高級船員	Deck Officer Class 3				
筆試	Written Examination	18	11	10	5
口試	Oral Examination	27	19	19	6
訊號	Signal	27	10	22	6
其他	Other Services	46	46	21	21
小計	Sub-total	259	213	127	74
2. 輪機師	Marine Engineer Officer				
一級輪機師	Marine Engineer Officer – Class 1				
筆試	Written Examination	0	0	0	0
口試	Oral Examination	0	0	0	0
其他	Other Services	12	12	4	4
二級輪機師	Marine Engineer Officer – Class 2				
筆試	Written Examination	20	1	18	3
口試	Oral Examination	23	1	19	4
其他	Other Services	19	19	10	10
三級輪機師	Marine Engineer Officer – Class 3				
口試	Oral Examination	11	4	13	5
其他	Other Services	15	15	18	18
小計	Sub-total	100	52	82	44
總計	Total	359	265	209	118

表 28 – 續
TABLE 28 – Cont'd

C.1 本地合格證明書 Local Certificates of Competency		2013		2014	
		申請人數 Number of Applications	及格人數 Number of Successes	申請人數 Number of Applications	及格人數 Number of Successes
1. 船長	Coxswain				
一級船長	Coxswain Grade 1				
筆試	Written Examination	12	10	6	6
其他	Other Services	113	113	115	115
二級船長	Coxswain Grade 2				
筆試	Written Examination	92	13	126	33
口試	Oral Examination	47	23	83	3
其他	Other Services	175	175	260	259
三級船長	Coxswain Grade 3				
筆試	Written Examination	344	100	465	150
口試	Oral Examination	0	0	0	0
其他	Other Services	271	271	192	192
小計	Sub-total	1 054	705	1 247	758
2. 輪機操作員	Engine Operator				
一級輪機操作員	Engine Operator Grade 1				
其他	Other Services	149	149	267	266
二級輪機操作員	Engine Operator Grade 2				
筆試	Written Examination	42	8	63	26
其他	Other Services	1	1	1	1
三級輪機操作員	Engine Operator Grade 3				
筆試	Written Examination	203	62	362	122
其他	Other Services	108	108	96	95
小計	Sub-total	503	328	789	510
總計	Total	1 557	1 033	2 036	1 268

表 28 – 續
TABLE 28 – Cont'd

C.2 遊樂船隻操作人合格證明書 Pleasure Vessel Operator Certificate of Competency		2013		2014	
		申請人數 Number of Applications	及格人數 Number of Successes	申請人數 Number of Applications	及格人數 Number of Successes
遊樂船隻 一級操作人	Pleasure Vessel Operator Grade 1				
筆試	Written Examination	153	30	141	24
口試	Oral Examination	164	14	165	19
其他	Other Services	236	236	292	290
遊樂船隻 二級操作人	Pleasure Vessel Operator Grade 2				
筆試	Written Examination	7 485	3 960	8 055	4 036
口試	Oral Examination	0	0	0	0
其他	Other Services	415	414	314	310
總計	Total	8 453	4 654	8 967	4 679

D. 部門考試 Departmental Examinations		2013		2014	
		考試人數 Examined	及格人數 Passed	考試人數 Examined	及格人數 Passed
一級本地船長	Coxswain Grade 1	0	0	1	1
二級本地船長	Coxswain Grade 2	157	84	182	94
三級本地船長	Coxswain Grade 3	47	22	93	49
一級輪機操作員	Engine Operator Grade 1	0	0	0	0
二級輪機操作員	Engine Operator Grade 2	40	22	44	26
三級輪機操作員	Engine Operator Grade 3	64	27	81	29
總計	Total	308	155	401	199

表 28 – 續
TABLE 28 – Cont'd

E. 其他考試／評定 Other Examinations/Assessments	2013		2014	
	申請人數 Number of Applications	及格人數 Number of Successes	申請人數 Number of Applications	及格人數 Number of Successes
救生艇筏熟練操作證明書 Proficiency in Survival Craft Certificate	0	0	0	0
高級水手／水手證明書 Able Bodied Seaman/Efficient Deck Hand Certificate	0	0	0	0
船舶保安員專業證書 Certificate of Proficiency (CoP) as Ship Security Officer	4	4	25	25
指定保安職責海員專業證書的符合證明 Statement of Compliance on CoP as Security Training for Seafarers with Designated Security Duties	-	-	113	113
保安意識訓練專業證書的符合證明 Statement of Compliance on CoP as Security Awareness Training	-	-	49	49
類型級別證明書 (考試、重新生效及夜航批准) Type Rating Certificate (Examination, Revalidation and Night Service Approval)	413	412	419	419
香港執照 Hong Kong Licence	18 224	18 224	19 145	19 145
本地豁免 Local Exemption	87	87	108	108
總計 Total	18 728	18 727	19 859	19 859

備註： 其他 – 包括有關證明書批註、豁免、重新生效等事宜的申請。

Remark: Other services – including applications for endorsement, exemption and revalidation etc.

表 28 – 續
TABLE 28 – Cont'd

F. 截至 2014 年 12 月 31 日為止的海員註冊人數 Seafarer's Registration as at 31.12.2014			
根據第478章註冊的海員 Seafarers Registered Under Cap. 478	第一部 Part I	第二部 Part II	總計 Total
		4 320	1 531

G. 2014 年所簽發的僱用登記簿數目 Employment Registration Books Issued, 2014		
續發簿 Subsequent Books		0
補發簿 Replacement Books		1
新海員簿 New Entrants Books		202
總計 Total		203

H. 2014 年海員就業統計數字 Seafarers Employment Statistics, 2014				
期間 Period	僱用海員方式 Seafarers Employed Through			
	核准公司名冊 Permitted Company Roster	總名冊 General Roster	緊急僱用／重新僱用等 Emergency/Re-employment, etc.	總計 Total
2014年第一季 1 st Quarter 2014	92	3	2	97
2014年第二季 2 nd Quarter 2014	143	1	79	223
2014年第三季 3 rd Quarter 2014	119	5	643	767
2014年第四季 4 th Quarter 2014	119	6	5	130
總計 Total	473	15	729	1 217

表 28 – 續
TABLE 28 – Cont'd

I. 船公司及職位統計數字 Companies and Posts Statistics	
截至 2014年12月31日為止在商船海員管理處登記僱用本港註冊海員的船公司數目 Shipping companies listed with Mercantile Marine Office to employ Hong Kong registered seafarers as at 31.12.2014	28
2014年按船公司所交周年報表而編製的本港海員就業職位 Posts filled by Hong Kong seafarers as compiled from annual returns submitted by shipping companies, 2014	1 502

J. 2014年訂立和終結的香港註冊船舶船員協議條款 Crew Agreements of Hong Kong Registered Ships Opened and Closed, 2014				
	訂立的協議 Agreements Opened		終結的協議 Agreements Closed	
	在香港境內 In Hong Kong	在香港境外 Outside Hong Kong	在香港境內 In Hong Kong	在香港境外 Outside Hong Kong
船員協議條款數目 No. of agreements	82	1 550	74	1 396
總計 Total	1 632		1 470	

K. 香港註冊船舶僱用和解職的海員人次⁽¹⁾ Number of Employment and Discharge of Seafarers by Hong Kong Registered Ships⁽¹⁾		
	2013	2014
僱用的海員人次 No. of employment of seafarers	155 400	97 920
解職的海員人次 No. of discharge of seafarers	93 000	88 200

註釋： (1) 數字包括在香港以外地方註冊的海員。
Note: Figures include seafarers registered outside Hong Kong.

資料來源： (A) – (E) 海事處海員發證組
Data Sources: Seafarers' Certification Section, Marine Department
(F) – (K) 海事處註冊及商船海員管理處
Shipping Registry and Mercantile Marine Office, Marine Department

表 29
TABLE 29

香港註冊船舶統計數字
Statistics on Ships Registered in Hong Kong

A. 2014 年船舶數目和噸位
Number of Ships and Tonnage, 2014

	船舶數目 No. of Ships	淨噸位 ⁽¹⁾ Net Tonnage ⁽¹⁾	總噸位 ⁽¹⁾ Gross Tonnage ⁽¹⁾
(i) 2014 年 12 月 31 日船舶註冊概況 On register as at 31.12.2014	2 373	52 193 057	92 782 363
(ii) 2014 年註冊的船舶 Ships Registered in the year of 2014	253	7 797 795	13 944 228
(iii) 2014 年取消註冊的船舶 Ships De-registered in the year of 2014	207	4 295 877	7 597 338

註釋： (1) 淨噸位及總噸位以每單位 100 立方呎計算。
Note: Net and gross tonnages are in units of 100 cubic feet.

B. 按總噸位分析於 2014 年年底在香港註冊的船舶數目
Ships Registered in Hong Kong Analysed by Gross Tonnage as at end of 2014

總噸位 Gross Tonnage	船舶數目 No. of Ships
< 500	164
500 - 999	53
1 000 - 1 999	42
2 000 - 2 999	16
3 000 - 3 999	17
4 000 - 4 999	29
5 000 - 9 999	257
10 000 - 14 999	81
15 000 - 19 999	178
20 000 - 24 999	189
25 000 - 29 999	224
30 000 - 34 999	185
35 000 - 39 999	128
40 000 - 44 999	226
45 000 - 49 999	36
50 000 - 59 999	107
60 000 - 69 999	47
70 000 - 79 999	10
80 000 - 89 999	64
90 000 - 99 999	139
100 000 - 149 999	80
≥ 150 000	101
總計 Total	2 373

表 29 – 續
TABLE 29 – Cont'd

C. 按船舶種類分析於 2014 年在香港註冊及取消註冊的船舶數目
Ship Registered and De-registered in Hong Kong by Ship Type, 2014

船舶類型 Type of Ship	註冊船舶 Ship Registered		取消註冊船舶 Ship De-registered	
	船舶數目 No. of Ships	總噸位 Gross Tonnage	船舶數目 No. of Ships	總噸位 Gross Tonnage
散裝貨船 Bulk Carrier	103	4 672 705	94	3 792 868
化學品船 Chemical Tanker	10	189 939	7	106 476
集裝箱船 Container	63	5 291 755	23	1 615 727
渡輪 Ferry	0	0	0	0
挖泥船 Dredger	1	14 026	0	0
氣體運輸船 Gas Carrier	5	233 130	7	287 321
一般貨船 General Cargo Ship	15	413 697	24	297 665
高速船 High Speed Craft	0	0	1	459
躉船 Lighter and Barge	0	0	3	50 926
油輪 Oil Tanker	39	2 582 545	34	1 185 585
礦沙／散貨／ 油類混用船 Ore/Bulk/Oil (OBO) Carrier	2	212 717	1	77 255
其他油輪 Other Tanker	3	326 281	2	161 689
滾裝卸式船 Roll On/Roll Off	0	0	1	15 903
拖船 Tug	3	6 320	5	4 404
遊艇 Yacht	9	1 114	5	1 062
總計 Total	253	13 944 228	207	7 597 338

資料來源： 海事處船舶註冊處
Data Source: Shipping Registry, Marine Department

表 30
TABLE 30

政府船隊統計數字
Government Fleet Statistics

項目	Item	2013	2014
1. 開支預算總額 ⁽¹⁾ (百萬元)	Total expenditure estimate ⁽¹⁾ (\$M)	432.2	474.4
2. 截至 12 月 31 日的政府船隊科員工總數 (包括船員)	Total number of staff in Government Fleet Division (GFD) (including crew) as at 31 December	490	497
3. (i) 建成及交收的政府新船 (ii) 建造中的政府新船 (iii) 已完成的政府新船計劃 (iv) 正進行中的政府新船計劃	(i) Government new vessels built and delivered (ii) Government new vessels under construction (iii) Government new vessel projects completed (iv) Government new vessel projects in progress	34 41 9 10	45 26 13 11
4. 新船招標／報價	Tenders/Quotations called for new vessels	15	15
5. 新船合約	Contracts awarded for new vessels	14	14
6. 已完成的合約及購買規格書	Contracts and procurement specifications completed	29	29
7. (i) 政府船舶總數 a. 大型機動船舶 b. 大型高速船 c. 其他雜類型船舶 (ii) 配備海事處人員的政府船舶 (iii) 海事處可供調配船員的時數率 (%) (iv) 已處理報廢的政府船舶	(i) Total number of vessels a. Major mechanised vessels b. High speed craft (large type) c. Other miscellaneous class vessels (ii) Government craft manned by the Marine Department (MD) (iii) MD crew staff time available for deployment (%) (iv) Government craft disposed	819 95 13 711 43 85.5 7	829 95 13 721 43 86.0 0
8. (i) 大型機動船舶及大型高速船的可提供使用率 (ii) 大型機動船舶及大型高速船的平均數目 (iii) 船舶維修後首次試航成功率 (iv) 政府船隊維修保養服務使用者滿意率 (%)	(i) Availability of major mechanised vessels and high speed craft (large type) (%) (ii) Average number of major mechanised vessels and high speed craft (large type) (iii) Vessel seatrial successful rate in first attempt after repair maintenance service (%) (iv) User satisfaction level on Government fleet repair maintenance service (%)	87.4 108 97.7 99.3	87.1 108 93.0 99.1
9. 大型機動船舶及大型高速船 (包括他們的機動子艇) 保養費總額 (百萬元)	Total maintenance cost of major mechanised vessels and high speed craft (large type) (including their mechanised daughter boats) (\$M)	162.5	179.3
10. 大型機動船舶及大型高速船 (包括他們的機動子艇) 平均保養費 (百萬元)	Average maintenance cost of major mechanised vessels and high speed craft (large type) (including their mechanised daughter boats) (\$M)	1.5	1.7
11. (i) 船舶維修定期保養合約安排總數 a. 根據合約保養的船舶數目 b. 根據合約保養的主機數目 (ii) 採購機械零件的定期合約數目	(i) Total number of vessel maintenance term contract (TC) arrangements a. Number of vessels maintained under TC b. Number of main engines repaired under TC (ii) Number of TC for procurement of machinery spare parts	44 112 257 16	46 112 265 16
12. 配備海事處人員的政府船舶肇事個案 (i) 肇事政府船舶數目 (ii) 工傷意外傷亡數目 a. 船塢員工 b. 船員	Accidents involving Government craft manned by MD (i) Number of Government vessels involved (ii) Number of casualties in industrial accidents a. Dockyard staff b. Crew	10 1 9	7 3 5
13. 參加職業安全及健康 (職安健) 課程的政府船塢人員人數 (i) 職業安全健康局舉辦課程 (ii) 政府船隊科工業安全組舉辦的課程 (iii) 其他職安健課程	Number of attendees of Government Dockyard to Occupational Safety and Health (OSH) training courses (i) Organised by the OSH Council (ii) Organised by the Industrial Safety Section, GFD (iii) Other OSH courses	31 156 100	32 228 123

註釋： (1) 指財政年度內的數字 (由當年四月一日至下年三月三十一日)。

Note: Figures refer to those in financial year (i.e. from 1 April of current year to 31 March of next year).

資料來源： 海事處政府船隊科
Data Source: Government Fleet Division, Marine Department

表 31
TABLE 31

政府船舶所屬部門及可用率情況 (截至 2014 年年底)
Departmental Ownership and Availabilities of Government Vessels (as at year end 2014)

船舶類型 Vessel Type	所屬部門 Ownership														
	AFCED 漁農自然護理署	AMS 醫療輔助隊	CAS 民眾安全服務隊	CEDD 土木工程拓展署	CSD 懲教署	C&ED 香港海關	EPD 環境保護署	FSD 消防處	DH 衛生署	HKPF 香港警務處	Imm D 入境事務處	LCSD 康樂及文化事務署	MD 海事處	WSD 水務署	總計 Total
機動子艇及泳灘艇 Mechanised Daughter Boats & Beach Craft	0	0	0	0	0	7	0	9	0	20	0	126	2	0	164
浮橋物／泳灘浮台及浮筏 Floating Bridge Structures/Beach Platforms & Rafts	0	0	0	0	0	0	0	0	0	0	0	392	0	0	392
機動及非機動充氣式橡皮艇 Mechanised and Non-mechanised Inflatable Boats	3	1	11	0	0	2	1	11	0	6	0	1	0	2	38
駁船 Lighters	0	0	0	0	0	0	0	1	0	6	0	0	21	0	28
小型機動船及小艇 Minor Mechanised Vessels & Dinghies	13	0	0	0	0	0	0	8	0	10	0	0	6	5	42
大型機動船舶 Major Mechanised Vessels	3	0	0	3	2	7	1	9	1	36	7	0	26	0	95
大型高速船 High Speed Craft (large type)	0	0	0	0	0	3	0	0	0	10	0	0	0	0	13
中型高速船 High Speed Craft (medium type)	8	0	0	0	0	2	0	2	0	40	0	0	5	0	57
總計 Total	27	1	11	3	2	21	2	40	1	128	7	519	60	7	829
大型機動船及大型高速船平均可提供使用率 Average Availability of Major Mechanised Vessels & High Speed Craft (large type) (%)	93.8	-	-	91.9	94.1	88.5	83.0	88.1	94.3	85.6	88.4	-	86.6	-	87.1

資料來源： 海事處政府船隊科

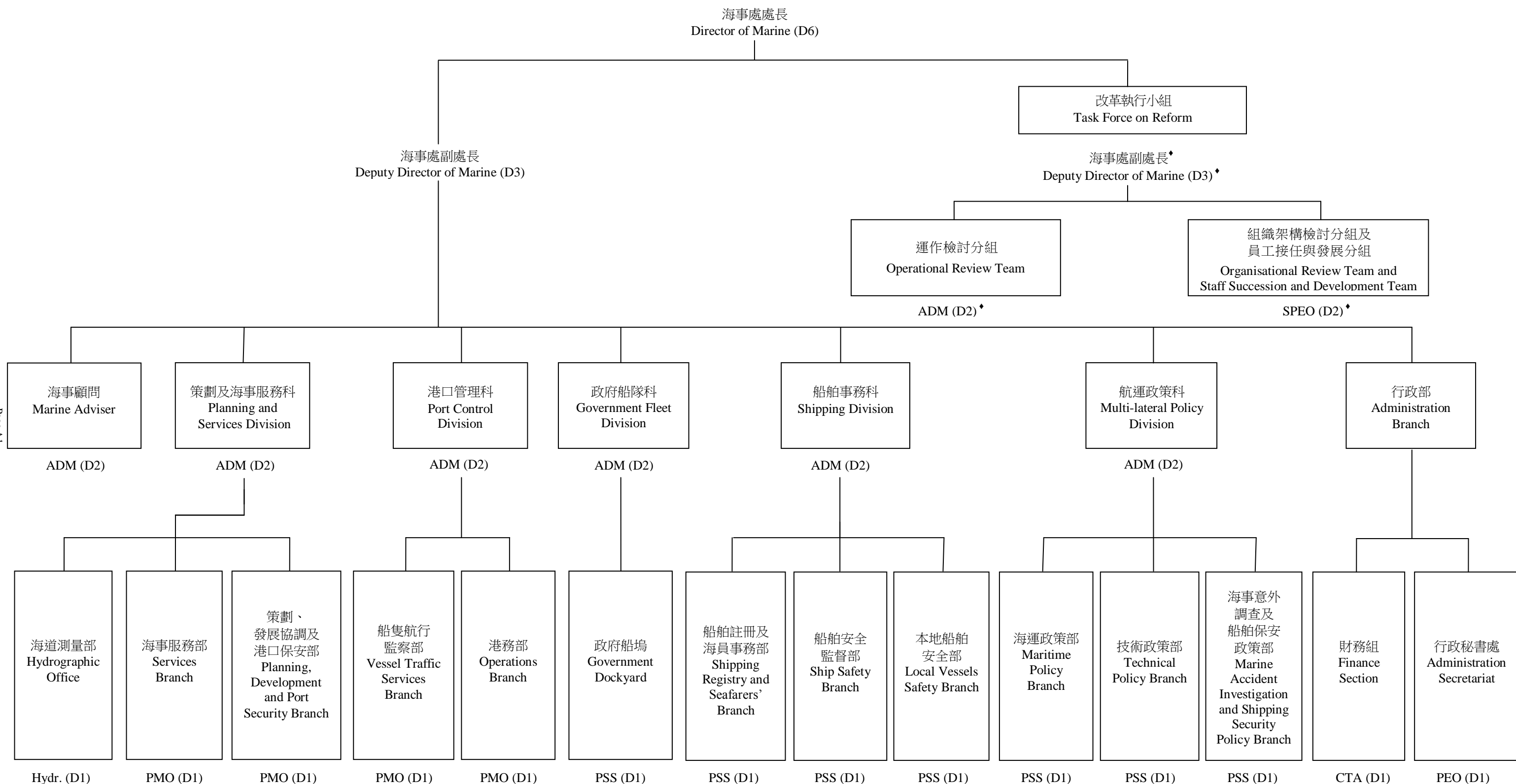
Data Source: Government Fleet Division, Marine Department

附 錄

Appendices

附錄 A
APPENDIX A

海事處組織架構圖(截至 2014 年年底)
Organisation Chart of the Marine Department (as at year end 2014)



圖例： ADM = 海事處助理處長 Assistant Director of Marine
 Legend: PMO = 首席海事主任 Principal Marine Officer
 PSS = 首席驗船主任 Principal Surveyor of Ships
 Hydr. = 海道測量師 Hydrographer
 SPEO = 高級首席行政主任 Senior Principal Executive Officer
 PEO = 首席行政主任 Principal Executive Officer
 CTA = 總庫務會計師 Chief Treasury Accountant
 D6 = 首長薪級第六點(如此類推) Directorate Level 6 (and so on)

*Supernumerary post 編外職位

附錄 B
APPENDIX B

海事處的編制和實際員額 (截至 2014 年年底)
Establishment and Strength of the Marine Department (as at year end 2014)

首長級人員 Directorate Officers		編制 Establishment	實際員額 Strength
海事處處長	Director of Marine (D6)	1	0
首長級甲級政務官	Administrative Officer Staff Grade A (D6)	0	1
海事處副處長	Deputy Director of Marine (D3)	1	1
首長級乙級政務官	Administrative Officer Staff Grade B (D3)	1 [◆]	1
海事處助理處長	Assistant Director of Marine (D2)	6 + 2 [◆]	6
高級首席行政主任	Senior Principal Executive Officer (D2)	1 [◆]	0
首席海事主任	Principal Marine Officer (D1)	4 + 1 [◆]	4
首席驗船主任	Principal Surveyor of Ships (D1)	7 + 1 [◆]	7
首席行政主任	Principal Executive Officer (D1)	1	1
總庫務會計師	Chief Treasury Accountant (D1)	1	1
海道測量師	Hydrographer (D1)	1	1
部門職系 Departmental Grade			
高級海事主任	Senior Marine Officer	20	18
海事主任	Marine Officer	38 + 3 [◆]	30
海事監督	Marine Controller	13 + 1 [◆]	12
助理海事監督	Assistant Marine Controller	42	33
高級船舶安全主任	Senior Shipping Safety Officer	1 + 1 [◆]	2
船舶安全主任	Shipping Safety Officer	7	7
高級驗船主任	Senior Surveyor of Ships	17	16
驗船主任	Surveyor of Ships	32	26
高級助理船務主任	Senior Assistant Shipping Master	29	28
一級海事督察	Marine Inspector I	95 + 1 [◆]	93
二級海事督察	Marine Inspector II	105	100
輔航設備監督	Superintendent of Aids to Navigation	1	1
助理輔航設備監督	Assistant Superintendent of Aids to Navigation	2	1

附錄 B - 續
APPENDIX B - Cont'd

部門職系 Departmental Grade		編制 Establishment	實際員額 Strength
總驗船督察	Chief Ship Inspector	2	2
高級驗船督察	Senior Ship Inspector	11	9
驗船督察	Ship Inspector	25	20
助理驗船督察	Assistant Ship Inspector	11	16
小輪大槓	Launch Mechanic	1	1
一般職系 General Grade			
高級政務主任	Senior Administrative Officer	1	0
政務主任	Administrative Officer	0	1
總管理參議主任	Chief Management Services Officer	1	1
高級管理參議主任	Senior Management Services Officer	2	1
一級管理參議主任	Management Services Officer I	0	1
二級管理參議主任	Management Services Officer II	2	2
高級統計師	Senior Statistician	1	1
統計師	Statistician	0	1
一級統計主任	Statistical Officer I	1	1
二級統計主任/ 見習統計主任	Statistical Officer II/ Student Statistical Officer	3	3
系統經理	Systems Manager	3	1
一級系統分析/ 程序編製主任	Analyst/Programmer I	6	5
二級系統分析/ 程序編製主任	Analyst/Programmer II	5	8
高級庫務會計師	Senior Treasury Accountant	1	1
庫務會計師	Treasury Accountant	3	3
高級會計主任	Senior Accounting Officer	1	0
一級會計主任	Accounting Officer I	1	2
二級會計主任	Accounting Officer II	3	3
總行政主任	Chief Executive Officer	2	3
高級行政主任	Senior Executive Officer	4	4
一級行政主任	Executive Officer I	8	6
二級行政主任	Executive Officer II	8	11

附錄 B - 續
APPENDIX B - Cont'd

一般職系 General Grade		編制 Establishment	實際員額 Strength
高級法定語文主任	Senior Official Languages Officer	1	1
一級法定語文主任	Official Languages Officer I	2	2
二級法定語文主任	Official Languages Officer II	2	2
高級電子工程師	Senior Electronics Engineer	1	1
電子工程師/ 助理電子工程師	Electronics Engineer/ Assistant Electronics Engineer	2	2
高級土地測量師	Senior Land Surveyor	1	1
土地測量師/ 助理土地測量師	Land Surveyor/ Assistant Land Surveyor	2	3
電子督察	Electronics Inspector	1	1
助理空氣調節督察	Assistant Air-Conditioning Inspector	1	1
首席測量主任 (工程)	Principal Survey Officer (Engineering)	1	1
高級測量主任 (工程)	Senior Survey Officer (Engineering)	4 + 1 [♦]	4
測量主任 (工程)/ 見習測量主任 (工程)	Survey Officer (Engineering)/ Survey Officer Trainee (Engineering)	11	11
首席技術主任 (製圖)	Principal Technical Officer (Cartographic)	1	1
高級技術主任 (製圖)	Senior Technical Officer (Cartographic)	4	3
技術主任 (製圖)/ 見習技術主任 (製圖)	Technical Officer (Cartographic)/ Technical Officer Trainee (Cartographic)	5	8
高級文書主任	Senior Clerical Officer	6	5
文書主任	Clerical Officer	30	31
助理文書主任	Assistant Clerical Officer	76	76
文書助理	Clerical Assistant	119	114
辦公室助理員	Office Assistant	8	6
高級物料供應主任	Senior Supplies Officer	1	0
物料供應主任	Supplies Officer	1	1
助理物料供應主任	Assistant Supplies Officer	1	2
高級物料供應員	Senior Supplies Supervisor	1	1
一級物料供應員	Supplies Supervisor I	2	2
二級物料供應員	Supplies Supervisor II	11	11
助理物料供應員	Supplies Assistant	3	3
物料供應服務員	Supplies Attendant	2	2

附錄 B - 續
APPENDIX B - Cont'd

一般職系 General Grade		編制 Establishment	實際員額 Strength
高級私人秘書	Senior Personal Secretary	1	1
一級私人秘書	Personal Secretary I	9	8
二級私人秘書	Personal Secretary II	18	16
機密檔案室助理	Confidential Assistant	1	1
繕校員	Calligraphist	2	2
打字員	Typist	3	3
汽車司機	Motor Driver	4	4
共通職系 Common Grade			
總技術主任	Chief Technical Officer	2	2
高級電氣督察	Senior Electrical Inspector	2	2
電氣督察	Electrical Inspector	4	3
助理電氣督察	Assistant Electrical Inspector	2	2
高級機械督察	Senior Mechanical Inspector	7	7
機械督察	Mechanical Inspector	10	10
助理機械督察	Assistant Mechanical Inspector	5	4
一級監工	Works Supervisor I	12 + 1*	8
二級監工	Works Supervisor II	8	8
小輪船員督導員	Launch Crew Supervisor	3 + 1*	3
高級小輪船長	Senior Launch Master	59 + 1*	45
小輪船長	Launch Master	46 + 2*	51
小輪助理員	Launch Assistant	213 + 3*	202
高級技工	Senior Artisan	38 + 1*	37
技工	Artisan	72 + 2*	45
丈量員	Chainman	4	3
產業看管員	Property Attendant	1	0
二級工人	Workman II	33	23
總計	Total	1 389 + 24*	1 283

* 編外職位
Supernumerary post

附錄 C
APPENDIX C

2014 年海事處訓練組舉辦的課程
Training Courses Conducted by Training Section, Marine Department in 2014

課程名稱 Course Title	學期 Duration	參加學員* Target Participants*	班級數目 Number of Classes	學員數目 Number of Participants
1. 基本小型船舶操縱技術課程 Basic Boat Handling Skills Course	5 days	FSD, MD	1	4
2. 民安隊海上油污訓練課程 CAS Oil Pollution Course	2 days	CAS	2	36
3. 電子海圖顯示及資料系統和自動識別系統課程 (海事主任課程) Electronic Chart Display and Information System (ECDIS) and Automatic Identification System (AIS) Course (For MO)	2 days	MO	1	7
4. 全球海上遇險及安全系統 – 限用操作員證書課程 Global Maritime Distress and Safety System (GMDSS) – Restricted Operator's Certificate Course	5 days	MI I, MI II	2	12
5. 國際海空海上搜尋救助課程 International Aeronautical and Maritime Search and Rescue (IAMSAR) Course	5 days	MO	1	6
6. 基本船舶操縱課程 Introduction of Ship Handling Course	2 days	MO	1	4
7. 康樂及文化事務署海上油污訓練課程 LCSD Oil Pollution Course	1 day	LCSD	1	17
8. 一級海事督察深造課程 Marine Inspector I Enhancement Course	25 days	MI I, MI II	1	10
9. 海事督察訓練課程 – 甲部 Marine Inspector Training Course – Part A	30 days	MI I, MI II	1	10
10. 海事督察訓練課程 – 乙部 Marine Inspector Training Course – Part B	50 days	MI I, MI II	1	6
11. 收集油污樣板工作坊 Oil Sampling Workshop	0.5 day	MI I, MI II	1	24
12. 領港員模擬船操縱課程 Pilotage Simulation Course	2 days	HKPA	3	5
13. 香港水域雷達操作員課程 Radar Operator Course for Hong Kong Waters	7 days	C&E, FSD, OFCA, SLM, LM, LA	8	43
14. 船舶排放黑煙 (Ringelmann Chart) 應用課程 Ringelmann Chart Application Course on Dark Smoke Emission	0.5 day	MI I, MI II	7	74
15. 船舶模擬器導師課程 Ship Simulator Instructor Course	2 days	C&E, Marpol, MO	1	11
16. 船舶交通服務在職培訓課程 VTS On-the-Job Training Course	30 days	AMC, MO	1	6
17. 船舶交通服務操作員基本課程 (海事主任課程) VTS Operator Basic Training Course (For MO)	70 days	MO	1	3
18. 船舶交通服務操作員基本課程 (新入職助理海事監督 課程) VTS Operator Basic Training Course (For new AMC)	93 days	AMC	1	3
19. 船舶交通服務操作員深造課程 – 海外人士 Participants VTS Operator Enhancement Course – Overseas Participants	8 days	Shenzhen VTS	1	8

附錄 C – 續
APPENDIX C – Cont'd

課程名稱 Course Title	學期 Duration	參加學員* Target Participants*	班級數目 Number of Classes	學員數目 Number of Participants
20. 船舶交通服務操作員增潤課程 VTS Operator Refreshment Course	0.5 day	AMC	3	36
21. 船舶交通服務重新生效課程 VTS Revalidation Course	2 days	AMC	1	2
22. 船舶交通服務研討會 / 工作坊 VTS Seminar / Workshop	0.5 day	AMC, MI I, MI II	1	12
總計 Total			41	339

註釋：* 參加海事處在二零一四年舉辦的訓練課程的機構及職位：

Note: List of organisations/posts participated in the training courses conducted by the Marine Department in 2014:

機構 Organisation	縮寫 Abbreviation	
民眾安全服務隊	Civil Aid Service	CAS
香港海關	Customs and Excise Department	C&E
消防處	Fire Services Department	FSD
香港領港會	Hong Kong Pilots Association	HKPA
康樂及文化事務署	Leisure and Cultural Services Department	LCSD
香港水警	Marine Police	Marpol
海事處	Marine Department	MD
香港通訊事務管理局	Office of the Communications Authority	OFCA
中華人民共和國深圳海事局	Shenzhen Maritime Safety Administration P.R.C.	Shenzhen VTS

職位 Post	縮寫 Abbreviation	
助理海事監督	Assistant Marine Controller	AMC
小輪助理員	Launch Assistant	LA
小輪船長	Launch Master	LM
一級海事督察	Marine Inspector I	MI I
二級海事督察	Marine Inspector II	MI II
海事主任	Marine Officer	MO
高級小輪船長	Senior Launch Master	SLM

附錄 D
APPENDIX D

2014 年海事處訪客
Visitors of the Marine Department, 2014

海事處於二零一四年接待了以下訪客：

During the year of 2014, the Marine Department hosted the following visitors:

編號 No.	訪問日期 Date of Visit	機構／代表 Organisation/Representative
1.	16.1.2014	中國近海石油服務 (香港) 有限公司 China Ocean Oilfields Services (HK) Ltd.
2.	28.1.2014	水警訓練學校 Marine Police Training School
3.	11.2.2014	美國海岸防衛隊 U.S. Coast Guard
4.	13.2.2014	美國海岸防衛隊 U.S. Coast Guard
5.	18.2.2014	大連海事大學 Dalian Maritime University
6.	20.2.2014	南韓京畿平澤港灣公社 Gyeonggi Pyeongtaek Port Corporation
7.	27.2.2014	香港消防處 Hong Kong Fire Services Department
8.	28.2.2014	舟山市市長及代表團 Mayor and delegation from Zhoushan City
9.	3.3.2014	國際海事組織 International Maritime Organization
10.	14.3.2014	日本海上保安廳 Japan Coast Guard
11.	26.3.2014	中國人民解放軍駐香港部隊 The People's Liberation Army Hong Kong Garrison
12.	8.4.2014	前海深港現代服務業合作區管理局 Authority of Qianhai Shenzhen-Hongkong Modern Service Industry Cooperation Zone
13.	9.4.2014	廣東漁業船舶檢驗局 Guangdong Register of Fishing Vessels
14.	23.4.2014	廣東海事局 Guangdong Maritime Safety Administration
15.	9.5.2014	新加坡交通部 Singapore Ministry of Transport
16.	12.5.2014 – 24.5.2014	新西蘭海事處 (東京諒解備忘錄港口國監督檢查員交流計劃) Maritime New Zealand (Tokyo MOU PSCO Exchange Programme)
17.	27.5.2014	布魯克斯貝爾香港有限公司 Brookes Bell Hong Kong Ltd.
18.	29.5.2014	新加坡民防部隊 Singapore Civil Defense Force

附錄 D – 續
APPENDIX D - Cont'd

編號 No.	訪問日期 Date of Visit	機構／代表 Organisation/Representative
19.	4.6.2014	加蓬共和國港務局局長 Port Director of the Republic of Gabon
20.	4.6.2014	印度尼西亞渡輪公司 PT ASDP Indonesia Ferry (Persero)
21.	11.6.2014	中國近海石油服務 (香港) 有限公司 China Ocean Oilfields Services (HK) Ltd.
22.	24.6.2014	澳洲基建及地區發展局運輸保安督察辦事處 Office of the Inspector of Transport Security, Department of Infrastructure and Regional Development, Australia
23.	28.6.2014	香港物流管理人員協會 Hong Kong Logistics Management Staff Association
24.	3.7.2014	澳門海事及水務局 Macao Marine and Water Bureau
25.	8.7.2014	環保處成員隨同港口國監督檢查員登外洋輪作港口國監督檢查 Environmental Protection Department Officers accompanied by PSCO for PSC inspection
26.	14.7.2014	水警訓練學校 Marine Police Training School
27.	28.7.2014	大連海事大學 Dalian Maritime University
28.	8.8.2014	澳門海事及水務局 Macau Maritime and Water Bureau
29.	11.8.2014	澳洲昆士蘭湯斯維爾市市長及代表團 Mayor of Townsville, Queensland, Australia and delegation
30.	4.9.2014	波羅的海國際航運公會 Baltic and International Maritime Council
31.	4.9.2014	中國杯賽事組委會 Organisation Committee of the China Cup
32.	5.9.2014	迪拜海港城市管理局 Dubai Maritime City Authority
33.	23.9.2014	廈門海事局 Xiamen Maritime Safety Administration
34.	23.9.2014 – 30.9.2014	廣東海事局 (港口國監督檢查員交流計劃) Guangdong Maritime Safety Administration (PSCO Exchange Programme)
35.	25.9.2014	美國海岸防衛隊 U.S. Coast Guard
36.	6.10.2014	巴西聯邦政府聖多斯港務局及德勤企業管理諮詢公司 Brazilian Federal Government (Santos Port Authority) and Deloitte Consulting
37.	10.10.2014	南安普頓索倫特大學 Southampton Solent University
38.	4.11.2014	布魯克斯貝爾香港有限公司 Brookes Bell Hong Kong Ltd.

附錄 D – 續
APPENDIX D - Cont'd

編號 No.	訪問日期 Date of Visit	機構／代表 Organisation/Representative
39.	14.11.2014	英國海道測量部 U.K. Hydrographic Office
40.	11.12.2014 - 12.12.2014	深圳海事局 Shenzhen Maritime Safety Administration
41.	15.12.2014 – 19.12.2014	深圳海事局 (港口國監督檢查員交流計劃) Shenzhen Maritime Safety Administration (PSCO Exchange Programme)
42.	18.12.2014	中國海事局 Maritime Safety Administration of the People's Republic of China
43.	19.12.2014	廣州法院法官代表團 Delegation of judges from Guangzhou Court
44.	19.12.2014	中華人民共和國廣州海事法院 Guangzhou Maritime Court of People's Republic of China

附錄 E
APPENDIX E

2014 新訂海事法例
New Maritime Legislations, 2014

二零一四年一月一日至二零一四年十二月三十一日期間通過的海事及航運法例列載如下：

The following maritime and shipping legislations were enacted during the year under review (1.1.2014 – 1.12.2014):

法例名稱 Title	參考編號 Reference No.
2014 年船舶法例 (排煙管制) (修訂) 條例 Shipping Legislation (Control of Smoke Emission) (Amendment) Ordinance 2014	2014 年第 13 號條例 Ord. No. 13 of 2014
2014 年船舶及港口管制規例 (修訂附表 7) 公告 Shipping and Port Control Regulations (Amendment of Seventh Schedule) Notice 2014	編號 : L.N. 47/2014 L.N. 47 of 2014
2014 年港口管制 (貨物裝卸區) (修訂) 規例 Port Control (Cargo Working Area) (Amendment) Regulation 2014	編號 : L.N. 148/2014 L.N. 148 of 2014

附錄 F
APPENDIX F

2014 年輔航設備
Aids to Navigation, 2014

A. 使用中的輔航設備
Aids to Navigation in Use

輔航設備	Aids to Navigation	截至 2014 年 12 月 31 日 as at 31.12.2014
1. 燈浮標	Light Buoy	124
2. 燈航標	Light Beacon	422
3. 雷達應答標	Racon	1
4. 霧角	Fog Horn	7

B. 本年新設的輔航裝置
New Aids Established during the Year

1. 龍鼓 Urmston	於 2014 年 1 月 24 日，龍鼓水道錨地以北設置一個東方位燈浮標，以標示淺水區域。 An east cardinal light buoy was established to mark the shallow water area at north of Urmston Road Anchorage on 24.1.2014.
2. 氣象 10 Weather 10	於 2014 年 3 月 7 日，沙洲以南設置兩個氣象燈浮標，以收集氣象和水流數據。 Two weather light buoys were established to the South of Sha Chau on 7.3.2014 for collecting weather and current data.
3. 氣象 11 Weather 11	
4. 啟德 4 KT 4	於 2014 年 8 月 29 日，啟德郵輪碼頭二號泊位對開一個深度在海圖基準面以下 12 米的疏浚區西北端設置一個特別標誌燈浮標，以作標識。 A special mark light buoy was established to mark the northwesterly extreme of the dredged area which had been dredged to a depth of 12 metres below Chart Datum off berth No.2 of the Kai Tak Cruise Terminal on 29.8.2014.
5. 北長洲石北 Adamasta Rock N	於 2014 年 11 月 27 日，北長洲海峽設置兩個方位燈浮標。 Two cardinal mark light buoys were established in the Adamasta Channel on 27.11.2014.
6. 北長洲石南 Adamasta Rock S	

附錄 F – 續
APPENDIX F – Cont'd

C. 本年拆除的輔航裝置
Aids Discontinued during the Year

1. 北長洲石西北 Adamasta Rock NW	於 2014 年 11 月 27 日，北長洲海峽撤銷兩個側面燈浮標。 Two lateral mark light buoys were withdrawn in the Adamasta Channel on 27.11.2014.
2. 北長洲石東南 Adamasta Rock SE	

D. 本年遭損毀的輔航裝置
Aids Damaged during the Year

下列燈浮標及燈航標遭損毀，航標燈熄滅。
The light buoys and light beacons listed below were damaged and unlit.

月份	Month	名稱	Name
1 月	January	汾流	Fan Lau
2 月	February	仔仔排	Ma Tsai Pai
		龍鼓 1	UR 1
3 月	March	繫泊浮泡 A17	Mooring Buoy A17
		繫泊浮泡 A43	Mooring Buoy A43
		南丫電力 1	P 1
5 月	May	北航 3	Northern 3
7 月	July	青衣西	Tsing Yi West
8 月	August	北航 3	Northern 3
		北航 4	Northern 4
		將軍澳 2	Tseung Kwan O 2
		將軍澳 3	Tseung Kwan O 3
		青衣南 1	Tsing Yi South 1
9 月	September	繫泊浮泡 A17	Mooring Buoy A17
		北航 2	Northern 2
10 月	October	機場 5	Airport 5
		東涌 1	TC 1
11 月	November	交椅洲北	Kau Yi Chau North
		大嶼山東南	Lantau SE

附錄 F – 續
APPENDIX F – Cont'd

E. 本年改進的輔航裝置
Aids Reprovisioned during the Year

1. 下列燈航標已換上全新現代化器材，用以提高光達距離。
The light beacons listed below were upgraded with modern equipment for better luminous range.

月份	Month	名稱	Name
1 月	January	柴灣 1	Chai Wan 1
		海下碼頭	Hoi Ha Pier
		鋼線灣	Kong Sin Wan
		醉酒灣	Rambler Channel
3 月	March	燈籠洲	Tang Lung Chau
		大浪石	Wave Rock
4 月	April	赤徑渡輪碼頭	Chek Keng Ferry Pier
		葵青橋南綠	Kwai Tsing Bridge South Green
		葵青橋南紅	Kwai Tsing Bridge South Red
		葵青橋南白	Kwai Tsing Bridge South White
		小鴉洲村碼頭	Siu A Chau Tsuen Pier
5 月	May	孖仔排	Ma Tsai Pai
		索罟灣新碼頭	Sok Kwu Wan New Pier
7 月	July	土瓜灣 1	To Kwa Wan 1
10 月	October	沙螺灣	Sha Lo Wan
		小蠔灣	Siu Ho Wan
11 月	November	高流灣碼頭	Ko Lau Wan Pier
12 月	December	繫泊浮泡 A78	Mooring Buoy A78
		東涌橋 4	Tung Chung Bridge 4
		東涌橋 6	Tung Chung Bridge 6
		東涌橋 8	Tung Chung Bridge 8

附錄 F – 續
APPENDIX F – Cont'd

E. 本年改進的輔航裝置(續)
Aids Reprovisioned during the Year (Cont'd)

2. 下列燈航標已由全新現代化器材取代，用以提高其可靠性。
The light beacons listed below were replaced with modern equipment for higher reliability.

月份	Month	名稱	Name
2月	February	仔仔排	Ma Tsai Pai
3月	March	石崗圍	Shek Kwong Wai
		大澳 1	Tai O 1
		大澳 2	Tai O 2
5月	May	白芒碼頭	Pak Mong Pier
6月	June	鳳凰笏	Fung Wong Wat
		刀頭咀	To Tau Tsui
7月	July	蜆排	Hin Pai
		谷埔碼頭	Kuk Po Pier
		荔枝莊碼頭	Lai Chi Chong Pier
		東涌橋 10	Tung Chung Bridge 10
		東涌橋 12	Tung Chung Bridge 12
		東涌橋 14	Tung Chung Bridge 14
8月	August	后海灣 G	Deep Bay G
		荔枝窩碼頭	Lai Chi Wo Pier
		西流港碼頭	Sai Lau Kong Pier
		大澳 1	Tai O 1
9月	September	政府船塢 2	GD 2
		海洋公園 2	Ocean Park 2
10月	October	鶴咀	Cape D'Aguilar
11月	November	交椅洲北	Kau Yi Chau North
		高流灣碼頭	Ko Lau Wan Pier
		東涌 1	TC 1
		東涌橋 1	Tung Chung Bridge 1

附錄 F – 續
APPENDIX F – Cont'd

E. 本年改進的輔航裝置 (續)
Aids Reprovisioned during the Year (Cont'd)

3. 下列燈航標已更換太陽能電池，用以提高航標的可靠性。
The solar batteries of the light beacons listed below were renewed in order to increase reliability.

月份	Month	名稱	Name
1 月	January	海下碼頭	Hoi Ha Pier
		鋼線灣	Kong Sin Wan
		觀塘公眾碼頭	Kwun Tong Public Pier
		北角新村碼頭	Pak Kok San Tsuen Pier
		醉酒灣	Rambler Channel
		土瓜灣 3	To Kwa Wan 3
		土瓜灣 4	To Kwa Wan 4
		鹽田仔碼頭	Yim Tin Tsai Pier
2 月	February	中港 2	CFT 2
		中港 4	CFT 4
		龍鼓洲	Lung Kwu Chau
		北鯉魚門	North Lei Yue Mun
		醉酒灣 2	Rambler Channel 2
		沙田海	Shatin Hoi
3 月	March	佛堂洲	Fat Tong Chau
		伙頭墳洲碼頭	Fo Tau Fau Chau Pier
		稔樹灣碼頭	Nim Shue Wan Pier
		石崗圍	Shek Kwong Wai
		石牛洲	Shek Ngau Chau
		大澳 1	Tai O 1
		大澳 2	Tai O 2
		大浪石	Wave Rock
4 月	April	龍珠島	Pearl Island
		筲箕灣 1	Shau Kei Wan 1
		小鴉洲村碼頭	Siu A Chau Tsuen Pier
		油麻地 2	Yau Ma Tei 2
5 月	May	青洲新碼頭	Green Island New Pier
		藍塘 2	TCS 2
		汀九橋墩 3	Ting Kau Bridge Pier 3

附錄 F – 續
APPENDIX F – Cont'd

E. 本年改進的輔航裝置 (續)

Aids Reprovisioned during the Year (Cont'd)

3. 下列燈航標已更換太陽能電池，用以提高航標的可靠性。(續)

The solar batteries of the light beacons listed below were renewed in order to increase reliability.
(Cont'd)

月份	Month	名稱	Name
6月	June	鴨洲碼頭	Ap Chau Pier
		長洲石	Cheung Chau Rock
		鳳凰笏	Fung Wong Wat
		小蠔灣	Siu Ho Wan
		刀頭咀	To Tau Tsui
		橫瀾碼頭	Waglan Pier
7月	July	荔枝莊碼頭	Lai Chi Chong Pier
		石鼓洲碼頭	Shek Kwu Chau Pier
		藍塘 4	TCS 4
		土瓜灣 1	To Kwa Wan 1
		東涌橋 10	Tung Chung Bridge 10
		東涌橋 12	Tung Chung Bridge 12
		東涌橋 14	Tung Chung Bridge 14
8月	August	馬灣碼頭	Ma Wan Pier
		坪洲碼頭	Peng Chau Pier
		半山石	Pun Shan Shek
9月	September	香港仔南 2	Aberdeen South 2
		海洋公園 2	Ocean Park 2
		西馬灣	West Ma Wan
10月	October	機場 5	Airport 5
		沙螺灣	Sha Lo Wan
		西馬灣	West Ma Wan
11月	November	長洲 A	Cheung Chau A
		高流灣碼頭	Ko Lau Wan Pier
		鹿頸	Luk Keng
		小蠔灣	Siu Ho Wan
		東涌 1	TC 1
		大浪石	Wave Rock

附錄 F – 續
APPENDIX F – Cont'd

E. 本年改進的輔航裝置 (續)
Aids Reprovisioned during the Year (Cont'd)

3. 下列燈航標已更換太陽能電池，用以提高航標的可靠性。(續)
The solar batteries of the light beacons listed below were renewed in order to increase reliability.
(Cont'd)

月份	Month	名稱	Name
12 月	December	柴灣 1	Chai Wan 1
		龍麟咀	Lung Lun Tsui
		銀鑛灣	Silver Mine Rock
		南塘 4	TCS 4

4. 下列燈航標的太陽能發電板數目已增加，用以提高航標的可靠性。
The number of solar panel of the light beacon listed below was increased to enhance reliability.

月份	Month	名稱	Name
3 月	March	石牛洲	Shek Ngau Chau
6 月	June	馬頭角公眾碼頭 東北	Ma Tau Kok Public Pier N.E.
9 月	September	奇力西	Kellett West
		燈籠洲	Tang Lung Chau

附錄 F – 續
APPENDIX F – Cont'd

F. 輔航燈與輔航設備工場員工比例
Ratio of Aids to Staff of Aids to Navigation Unit Workshop

年份 Year	輔航燈 Aids		輔航設備工場員工 ⁽¹⁾ Staff of Aids to Navigation Unit Workshop ⁽¹⁾		比例 Ratio (c) = (a)/(b)
	數目 Number (a)	變動百分率 Percentage Change	數目 Number (b)	變動百分率 Percentage Change	
1995	379	+1.1%	37	-7.5%	10.2
1996	380	+0.3%	36	-2.7%	10.6
1997	395	+3.9%	32	-11.1%	12.3
1998	432	+9.4%	29	-9.4%	14.9
1999	463	+7.2%	27	-6.9%	17.1
2000	468	+1.1%	27	0%	17.3
2001	482	+3.0%	25	-7.4%	19.3
2002	483	+0.2%	27	+8.0%	17.9
2003	497	+2.9%	27	0%	18.4
2004	509	+2.4%	27	0%	18.9
2005	518	+1.8%	25	-7.4%	20.7
2006	529	+2.1%	23	-8.0%	23.0
2007	533	+0.8%	23	0%	23.2
2008	536	+0.6%	24	+4.3%	22.3
2009	540	+0.7%	23	-4.2%	23.5
2010	543	+0.6%	24	+4.3%	22.6
2011	541	-0.4%	23	-4.2%	23.5
2012	539	-0.4%	22	-4.3%	24.5
2013	542	+0.6%	20	-9.1%	27.1
2014	546	+0.7%	20	0%	27.3

註釋： (1) 不包括負責在香港水域範圍內看管繫船設備／檢修浮泡的 5 位員工。

Note: Excluding five staff who are responsible for looking after the mooring facilities/overhaul of buoys within Hong Kong waters.