

香港港口統計年報

2013

Port of Hong Kong
Statistical Tables



中華人民共和國香港特別行政區海事處
Marine Department
Hong Kong Special Administrative Region
People's Republic of China

香 港 港 口
PORT OF HONG KONG
統 計 年 報
STATISTICAL TABLES
2013

有關本刊物的查詢，請聯絡：

海事處 策劃、發展協調及港口保安部 統計組

地址：中國香港中環統一碼頭道 38 號海港政府大樓 23 樓 2307 室

電話：(852) 2852 3660 圖文傳真：(852) 2542 4638

電郵：st-sec@mardep.gov.hk

Enquiries about this publication can be directed to:

Statistics Section

Planning, Development & Port Security Branch

Marine Department

Address: Room 2307, 23/F, Harbour Building,

38 Pier Road, Central, Hong Kong, China.

Tel.: (852) 2852 3660 Fax: (852) 2542 4638

E-mail: st-sec@mardep.gov.hk

海事處網頁

Home Page of the Marine Department

<http://www.mardep.gov.hk/>

同心協力，促進卓越海事服務

We are One in Promoting Excellence in Marine Services

目錄
CONTENTS

如欲進入統計表／附錄，請按下有關的藍色項目

To view the statistical tables/appendices, please click
the item in blue

頁數
Page No.

註釋

EXPLANATORY NOTES

iv - vii

摘要

SUMMARY

2008 至 2013 年主要港口統計數字及每年增長率

Principal Port Statistics for 2008 - 2013 and Annual Growth Rates

viii

第一部 -
PART I

港口活動

Port Activities

抵港／離港的船次

Vessel Arrivals/Departures

表 1	2013 年 按主要停泊地點分析抵港遠洋輪船的船次	
TABLE 1	Ocean Vessel Arrivals by Main Berthing Location, 2013	1
表 2	2013 年 按主要停泊地點分析離港遠洋輪船的船次	
TABLE 2	Ocean Vessel Departures by Main Berthing Location, 2013	1
表 3	2013 年 按船舶類型分析抵港船舶的船次	
TABLE 3	Vessel Arrivals by Ship Type, 2013	2
表 4	2013 年 按船旗分析抵港船舶的船次	
TABLE 4	Vessel Arrivals by Flag, 2013	3 - 4
表 5	2013 年 按船旗分析曾停靠香港的船舶數目和淨註冊噸位	
TABLE 5	Number and NRT of Vessels Calling Hong Kong by Flag, 2013	5 - 6
表 6	2013 年 按船舶類型分析離港船舶的平均在港停留時間	
TABLE 6	Average Time in Port for Vessels Departing Hong Kong by Ship Type, 2013	7
表 7	2013 年在貨櫃碼頭處理貨櫃的遠洋輪船統計數字	
TABLE 7	Statistics on Ocean Vessels with Containers Handled in Container Terminals, 2013	8
表 8	2013 年 按夏季吃水分析抵港遠洋輪船的船次	
TABLE 8	Ocean Vessel Arrivals by Summer Draft, 2013	9
表 9	2013 年 按船舶總長度分析抵港遠洋輪船的船次	
TABLE 9	Ocean Vessel Arrivals by Vessel Length Overall, 2013	9
表 10	2013 年 按主要來港原因分析抵港遠洋輪船的船次	
TABLE 10	Ocean Vessel Arrivals by Main Reason of Call, 2013	10
表 11	2013 年 按停泊地點及有否目的地分析郵輪抵港船次	
TABLE 11	Cruise Arrivals by Berthing Location by Whether the Trip with Destination, 2013	11
表 12	2013 年 跨境客運碼頭的抵港及離港航次統計數字	
TABLE 12	Statistics on Vessel Arrivals and Departures at Cross-boundary Ferry Terminals, 2013	12
表 13	2013 年 按船舶類型分析香港過境船舶的船次	
TABLE 13	Number of Vessel Trips Transit Hong Kong by Ship Type, 2013	13

客運量

Passenger Throughput

	<p>表 14 2013 年 按跨境客運碼頭分析客運量</p> <p>TABLE 14 Passenger Throughput by Cross-boundary Ferry Terminal, 2013</p>	14
	<p>表 15 2013 年 按航線分析抵港及離港乘客人次</p> <p>TABLE 15 Passenger Arrivals and Departures by Route, 2013</p>	15 - 16

貨櫃／貨物吞吐量

Container/Cargo Throughput

	<p>表 16 2013 年 按主要貨物裝卸地點分析貨櫃吞吐量</p> <p>TABLE 16 Container Throughput by Main Cargo Handling Location, 2013</p>	17
	<p>表 17 2013 年 按貨櫃碼頭以外的主要貨物裝卸地點分析裝卸的貨櫃</p> <p>TABLE 17 Containers Discharged/Loaded at Main Cargo Handling Locations Other than Container Terminals, 2013</p>	18
	<p>表 18 2013 年 按貨物種類及運輸方式劃分的裝卸港口貨物</p> <p>TABLE 18 Port Cargo Discharged/Loaded by Cargo Type and Mode of Transport, 2013</p>	19

第二部 - 港口服務及管理
PART II Port Services and Control

	<p>表 19 海港繫泊浮泡統計數字</p> <p>TABLE 19 Harbour Mooring Buoys Statistics</p>	20
	<p>表 20 2013 年 按分布地點分析香港私人繫泊設備數目</p> <p>TABLE 20 Number of Private Moorings Laid in Hong Kong by Location, 2013</p>	21 - 22
	<p>表 21 碇泊處一覽 (截至 2013 年年底)</p> <p>TABLE 21 List of Anchorages (as at year end 2013)</p>	23 - 24
	<p>表 22 避風塘一覽 (截至 2013 年年底)</p> <p>TABLE 22 List of Typhoon Shelters (as at year end 2013)</p>	25
	<p>表 23 公眾貨物裝卸區一覽 (截至 2013 年年底)</p> <p>TABLE 23 List of Public Cargo Working Areas (as at year end 2013)</p>	26
	<p>表 24 垃圾收集、油污和檢控個案統計數字</p> <p>TABLE 24 Refuse Collection, Oil Pollution and Prosecution Statistics</p>	27
	<p>表 25 按噸位等級分析香港持牌船隻 (截至 2013 年年底)</p> <p>TABLE 25 Hong Kong Licensed Vessels by Tonnage Classification (as at year end 2013)</p>	28 - 29

	頁數 Page No.
第三部 - 船舶服務 PART III Shipping Services	
表 26 船舶安全監督統計數字 TABLE 26 Ship Safety Statistics	30 - 32
表 27 本地船隻安全／海事工業安全／海事意外統計數字 TABLE 27 Local Vessels Safety/Marine Industrial Safety/Marine Accidents Statistics	33 - 38
表 28 海員發證、註冊和僱用統計數字 TABLE 28 Seafarers' Certification, Registration and Employment Statistics	39 - 45
表 29 香港註冊船舶統計數字 TABLE 29 Statistics on Ships Registered in Hong Kong	46 - 47
表 30 政府船隊統計數字 TABLE 30 Government Fleet Statistics	48
表 31 政府船舶所屬部門及可用率情況 (截至 2013 年年底) TABLE 31 Departmental Ownership and Availabilities of Government Vessels (as at year end 2013)	49
第四部 - 附錄 PART IV Appendices	
附錄 A 海事處組織架構圖 (截至 2013 年年底) APPENDIX A Marine Department Organisation Chart (as at year end 2013)	A1
附錄 B 海事處的編制和實際員額 (截至 2013 年年底) APPENDIX B Marine Department Establishment and Strength (as at year end 2013)	A2 - A5
附錄 C 2013 年 海事處訓練組舉辦的課程 APPENDIX C Training Courses Conducted by Training Section, Marine Department in 2013	A6 - A7
附錄 D 2013 年 海事處訪客 APPENDIX D Visitors of the Marine Department, 2013	A8 - A10
附錄 E 2013 年 新訂海事法例 APPENDIX E New Maritime Legislations, 2013	A11
附錄 F 2013 年 輔航設備 APPENDIX F Aids to Navigation, 2013	A12 - A18

1. 簡介

香港港口統計年報是香港海事處編製的港口及海事統計資料一覽表。這本年報輯錄以下統計數字和資料：-

- 抵港／離港的船次
- 客運量
- 貨櫃／貨物吞吐量
- 港口服務及管理
- 船舶服務
- 海事處組織架構圖
(編制和實際員額)
- 海事處舉辦的課程
- 海事處訪客
- 新訂海事法例
- 輔航設備

2. 資料來源

船舶進出口統計數字

船舶進出口統計數字乃根據船公司或代理人向海事處申報船舶抵達／離開港口的資料時所遞交的申報表(MO 618及MO 618A)編製而成。(摘要、表一至十)

貨櫃統計數字

在貨櫃碼頭裝運的貨櫃統計數字，主要由碼頭經營者提供。不在貨櫃碼頭裝運的遠洋輪船「空」貨櫃統計數字，由海事處根據申報表MO 618及MO 618A編製。所有其他詳細的貨櫃統計數字，皆由政府統計處根據貨物艙單抽樣編製而成。(摘要、表十六至十七)

停泊／貨物裝卸地點

有關遠洋輪船的主要貨物裝卸區和主要停泊地點的資料，均取自海事處船舶交通管理系統所保存的船舶活動報告。(表一至二、表七、表十六至十七)

1. Introduction

The *Port of Hong Kong Statistical Tables* is a collection of Hong Kong Port and Maritime statistical information compiled by the Marine Department. This publication brings together the following statistics and information: -

- Vessel Arrivals/Departures
- Passenger Throughput
- Container/Cargo Throughput
- Port Services and Control
- Shipping Services
- Marine Department Organisation Chart
(Establishment and Strength)
- Training Courses Conducted by the Marine Department
- Visitors to the Marine Department
- New Maritime Legislations
- Aids to Navigation

2. Data Sources

Vessel Statistics

Vessel statistics are based on the declaration forms (MO 618 & MO 618A) submitted to the Marine Department by shipping companies/agents for declaring arrivals/departures of vessels under their charge. (Summary Table, Tables 1 – 10)

Container Statistics

Statistics on container throughput handled at Container Terminals are mainly obtained from the terminal operators. Statistics on empty containers (ocean) handled at locations other than Container Terminals are compiled by the Marine Department based on the declaration forms of MO 618 and MO 618A. As for all the other detailed container throughput statistics, they are compiled by the Census and Statistics Department based on sampling of data in cargo manifests. (Summary Table, Tables 16 – 17)

Berthing/Cargo Handling Location

Information on the main cargo handling location and main berthing location in respect of ocean vessels are extracted from the trip activity report kept in the Marine Department's Vessel Traffic Management System. (Tables 1 – 2, 7, 16 – 17)

3. 用語及分類

容量

在本報告中，船舶的容量是以淨註冊噸位來表示。計算單位為淨註冊噸。淨註冊噸位是由一艘船的船殼內的容量(以立方呎計)，加上在甲板上用以裝載貨物、貯藏品及乘客的空間，再減去船長、高級船員、船員所住的地方、燃料、導航及推進器所佔用的地方。每一淨註冊噸相等於 100 立方呎的容量。

貨物裝卸地點

在本報告中，貨物裝卸地點的分類是「貨櫃碼頭」、「泊位和倉庫碼頭(包括公眾貨物裝卸區)」、「碇泊處」和「浮泡」。

貨櫃吞吐量

這是指以標準貨櫃單位計算的貨櫃搬運數目。一個標準貨櫃單位等同一個二十呎貨櫃的容量。

船旗

這是指船舶的國籍，表明其正式註冊的地方。香港在一九九二年正式開始船舶註冊制度。一九九七年七月一日起，香港特別行政區經中央人民政府授權繼續進行船舶註冊，並根據香港特別行政區的法律以「中國香港」的名義頒發有關證件。

內河航限

內河航限是指香港鄰近水域，一般指香港與珠江、大鵬灣及澳門，及其他在廣東和廣西與香港鄰近水域相連的內陸水域。內河航限的精確定義是指以下範圍內的水域：

- 東至東經 114°30'；
- 南至北緯 22°09'；及
- 西至東經 113°31'。

船舶類型

這是指船舶的特定用途，分為十八類：運車船、化學品運載船、普通貨船、其他貨船、郵船／渡輪、散裝乾貨船、漁船／魚類加工船、全槽格式貨櫃船、液化氣體運載船、駁船／躉船／貨艇、油輪、礦沙／散貨／油類混用船、其他液體運載船、遊樂船、滾裝卸式船、半貨櫃船、拖船及其他。

3. Terms and Classifications

Capacity

In this report, the capacity of a vessel is expressed in terms of net registered tonnage (NRT). The unit of measurement is net registered ton. NRT is, broadly, the capacity of a ship in cubic feet of the space within the hull, and of the enclosed space above the deck available for cargo, stores and passengers but excluding space used for the accommodation of the master, officers, crew, fuel, navigation and propelling machinery. One net registered ton is equivalent to 100 cubic feet of capacity.

Cargo Handling Location

The types of cargo handling location shown in this report are “container terminals”, “berths and wharves (including public cargo working areas)”, “anchorage” and “buoys”.

Container Throughput

This refers to the number of movement of cargo containers in TEU terms. A TEU stands for a twenty-foot equivalent unit.

Flag

This is the nationality of the vessel, indicating where she is officially registered. In Hong Kong, the official vessel registration system was set up in 1992. As from 1.7.1997, the Hong Kong Special Administrative Region is authorised by the Central People’s Government to continue to maintain a shipping register and issue related certificates under its legislation, using the name ‘Hong Kong, China’.

River Trade Limits

River trade limits mean the waters in the vicinity of Hong Kong, which broadly include the Pearl River, Mirs Bay and Macao, and other inland waters in Guangdong and Guangxi which are accessible from waters in the vicinity of Hong Kong. The precise definition of river trade limits refer to waters within the following boundaries:

- to the East, meridian 114°30' East;
- to the South, parallel 22°09' North; and
- to the West, meridian 113°31' East.

Ship Type

This refers to the known specific function of the ship. Eighteen types of ship are distinguished: car carrier, chemical carrier/tanker, conventional cargo vessel, other cargo vessel, cruise/ferry, dry bulk carrier, fishing/fish processing vessel, fully cellular container vessel, gas carrier/tanker, lighter/barge/cargo junk, oil tanker, ore/bulk/oil carrier, other fluid carrier, pleasure vessel, roll on/roll off, semi-container vessel, tug and others.

4. 資料定義

內河船隻

根據《船舶及港口管制條例》(第 313 章)所訂，內河船隻是指進出香港與內河航限內的港口之間的船隻。(摘要、表三至六、表十六至十八)

停泊／貨物裝卸地點

船舶在進入香港水域後可能停泊超過一個停泊地點。若船舶來港的主要原因是裝卸貨物，則主要的貨物裝卸地點和主要的停泊地點是指最為昂貴的地點，當中以貨櫃碼頭居首位，隨後是泊位和倉庫碼頭(包括公眾貨物裝卸區)、碇泊處和浮泡。若船舶來港的主要原因不是裝卸貨物，主要停泊地點為停留時間最長的地點。(表一至二、表七、表十六至十七)

內河客船

內河客船的抵港次數是指船隻停泊於港澳碼頭、中國客運碼頭、屯門客運碼頭和海天客運碼頭的次數。(摘要、表三至五)

5. 資料局限

遠洋客船數字包括在內河航限以外水域行駛的遊樂船。但是，由於有些船主／代理人沒有申報這些船舶的淨註冊噸位資料給海事處，故遠洋客船的淨註冊噸位數字可能輕微低於實際的數字。(摘要、表一至五)

由於不能準確地統計本地持牌遊樂船和漁船來往香港及內河航限內的船次，故這兩類船隻沒有包括在內河船隻統計範圍內。(摘要、表三至六)

4. Data Definitions

River Vessels

In accordance with the Shipping and Port Control Ordinance, Cap. 313, Laws of Hong Kong, river vessels refer to those travelling between Hong Kong and ports that are within the river trade limits. (Summary Table, Tables 3 – 6, 16 – 18)

Berthing/Cargo Handling Location

A vessel may berth at more than one location after entering into Hong Kong waters. If the main reason of call of the vessel is for loading/discharging cargo, both the main cargo handling location and the main berthing location refer to the most costly location, with Container Terminals ranked first, followed by Berths and Wharves (including Public Cargo Working Areas), Anchorages and Buoys. If the main reason of call is not for loading/discharging cargo, the main berthing location refers to the one with the longest stay. (Tables 1 – 2, 7, 16 – 17)

River Passenger Vessels

The figures on arrivals of river passenger vessels refer to the number of berthings at the Macau Ferry Terminal (MFT), the China Ferry Terminal (CFT), the Tuen Mun Ferry Terminal (TMFT) and SkyPier. (Summary Table, Tables 3 – 5)

5. Data Limitations

The number of ocean passenger vessels includes pleasure vessels plying beyond the river trade limits. However, as some of their owners/agents do not report NRT information to the Marine Department, the total NRT for ocean passenger vessels may be slightly under-reported. (Summary Table, Tables 1 – 5)

As accurate number of trips of locally licensed pleasure vessels and fishing vessels plying between Hong Kong and the river trade limits is not available, these two categories of vessels are not included in the river vessel statistics. (Summary Table, Tables 3 – 6)

6. 數字的進位

客運量、貨物和貨櫃吞吐量及淨註冊噸位統計數字是計算至最接近的千位。

項目	單位
客運量	千位
貨物吞吐量	千公噸
貨櫃吞吐量	千個標準貨櫃單位
淨註冊噸位	千噸

由於進位關係，本報告中所列的個別數字之和可能不等於其總數。另外，變動百分率和比重百分率是以未經進位的數字計算所得。

7. 代號

- () 與去年同期比較的變動百分率
- ※ 變動多於 1000%
- ^ 變動在 ±0.05% 之間
- @ 比重百分率少於 0.05
- † 少於 500 個標準貨櫃單位／人次／公噸
- # 臨時數字
- * 修訂數字
- N.A. 沒有數字
- 不適用

6. Rounding of Figures

Statistics on passenger throughput, cargo and container throughput and NRT are rounded to the nearest thousand.

Items	Units
Passenger Throughput	thousand units
Cargo Throughput	'000 tonnes
Container Throughput	'000 TEUs
NRT	'000 tons

Figures shown in this report may not add up to the respective totals due to rounding. Furthermore, percentage changes and percentage shares are calculated from unrounded figures.

7. Symbols

- () % change over the same period of preceding year
- ※ Change more than 1000%
- ^ Change within ±0.05%
- @ Percentage share less than 0.05
- † Less than 500 TEUs/ passengers/ tonnes
- # Provisional figures
- * Revised figures
- N.A. Not available
- Not applicable

策劃、發展協調及港口保安部
統計組

二零一四年五月

Statistics Section
Planning, Development & Port Security Branch

May 2014

摘要
SUMMARY

2008 至 2013 年主要港口統計數字及每年增長率
Principal Port Statistics for 2008 – 2013 and Annual Growth Rates

項目 Item	2008	2012	2013	每年增長率 Annual Growth Rate	
				2012-2013	2008-2013 ⁽¹⁾
1. 抵港船次 Number of Vessel Arrivals	217 362	190 859	187 540	-1.7%	-2.9%
(a) 遠洋輪船 Ocean Vessel	35 853	30 703	29 915	-2.6%	-3.6%
貨船 Cargo Vessel	32 843	28 286	27 076	-4.3%	-3.8%
客船 Passenger Vessel	3 010	2 417	2 839	+17.5%	-1.2%
(b) 內河船隻 River Vessel	181 509	160 156	157 625	-1.6%	-2.8%
貨船 Cargo Vessel	100 613	78 094	77 374	-0.9%	-5.1%
客船 Passenger Vessel	80 896	82 062	80 251	-2.2%	-0.2%
2. 抵港船舶的淨註冊噸位 (千噸) NRT of Vessel Arrivals ('000 tons)	483 064	518 985	524 198	+1.0%	+1.6%
(a) 遠洋輪船 Ocean Vessel	385 426	412 063	414 491	+0.6%	+1.5%
(b) 內河船隻 River Vessel	97 638	106 923	109 707	+2.6%	+2.4%
3. 貨櫃吞吐量 (千個標準貨櫃單位) Container Throughput ('000 TEUs)	24 494	23 117	22 352	-3.3%	-1.8%
(i) 按停泊地點分析 By Berthing Location					
貨櫃碼頭 Container Terminals	17 726	17 475	17 118	-2.0%	-0.7%
貨櫃碼頭以外 Other than Container Terminals	6 769	5 642	5 234	-7.2%	-5.0%
(ii) 按運輸方式分析 By Mode of Transport					
遠洋 Ocean	17 075	16 689	16 009	-4.1%	-1.3%
內河 River	7 419	6 428	6 344	-1.3%	-3.1%
4. 貨物吞吐量 (千公噸) Cargo Throughput ('000 tonnes)	259 402	269 282	276 055	+2.5%	+1.3%
(a) 海運 Seaborne	179 974	188 860	184 238	-2.4%	+0.5%
(b) 河運 River	79 428	80 423	91 817	+14.2%	+2.9%
5. 港澳碼頭、中國客運碼頭及屯門客運碼頭客運量 (千位) Total Passenger Throughput at MFT, CFT and TMFT⁽²⁾ ('000)	24 369	26 000	26 215	+0.8%	+1.5%
(a) 澳門 ⁽³⁾ Macau ⁽³⁾	18 702	21 017	21 067	+0.2%	+2.4%
(b) 中國內地 Mainland China	5 354	4 743	4 965	+4.7%	-1.5%
(c) 其他 Others	314	240	183	-24.0%	-10.2%

備註： 由於進位關係，本摘要中所列的個別數字之和可能不等於其總數。

Remark: Figures shown in this summary may not add up to the respective totals due to rounding.

註釋： (1) 複合平均每年增長率

(2) 屯門客運碼頭於二零一二年七月一日停止運作。

(3) 數字包括乘搭直升機來往澳門的乘客。

Notes: Average annual compound growth rate

The Tuen Mun Ferry Terminal ceased operation on 1 July 2012.

Helicopter passengers to and from Macau are included.

統計表
Statistical
Tables

表 1
TABLE 1

2013 年按主要停泊地點分析抵港遠洋輪船的船次
Ocean Vessel Arrivals by Main Berthing Location, 2013

主要停泊地點 Main Berthing Location	主要船舶類別 Main Vessel Category				總計 Total	
	貨船 Cargo Vessels		客船 Passenger Vessels			
	抵港船次 No. of Vessel Arrivals	淨註冊噸位 (千噸) NRT ('000)	抵港船次 No. of Vessel Arrivals	淨註冊噸位 (千噸) NRT ('000)	抵港船次 No. of Vessel Arrivals	淨註冊噸位 (千噸) NRT ('000)
	(%)	(%)	(%)	(%)	(%)	(%)
貨櫃碼頭 Container Terminals	11 672 (-5.7)	276 125 (-3.8)	5 (-44.4)	291 (-54.6)	11 677 (-5.7)	276 416 (-3.9)
泊位和倉庫碼頭 Berths and Wharves	1 610 (+2.1)	13 705 (+18.7)	928 (-10.9)	12 692 (+1.5)	2 538 (-3.1)	26 396 (+9.7)
碇泊處 Anchorages	13 741 (-3.6)	99 968 (+8.1)	249 (+3.8)	371 (+49.0)	13 990 (-3.5)	100 339 (+8.2)
浮泡 Buoys	53 (-39.1)	190 (-33.8)	1 657 (+47.2)	11 150 (+51.4)	1 710 (+41.0)	11 340 (+48.2)
總計 Total	27 076 (-4.3)	389 988 (-0.3)	2 839 (+17.5)	24 503 (+18.0)	29 915 (-2.6)	414 491 (+0.6)

表 2
TABLE 2

2013 年按主要停泊地點分析離港遠洋輪船的船次
Ocean Vessel Departures by Main Berthing Location, 2013

主要停泊地點 Main Berthing Location	主要船舶類別 Main Vessel Category				總計 Total	
	貨船 Cargo Vessels		客船 Passenger Vessels			
	離港船次 No. of Vessel Departures	淨註冊噸位 (千噸) NRT ('000)	離港船次 No. of Vessel Departures	淨註冊噸位 (千噸) NRT ('000)	離港船次 No. of Vessel Departures	淨註冊噸位 (千噸) NRT ('000)
	(%)	(%)	(%)	(%)	(%)	(%)
貨櫃碼頭 Container Terminals	11 840 (-4.9)	279 728 (-3.2)	5 (-50.0)	291 (-61.0)	11 845 (-4.9)	280 018 (-3.3)
泊位和倉庫碼頭 Berths and Wharves	1 658 (+11.3)	14 217 (+19.8)	928 (-10.7)	12 686 (+1.8)	2 586 (+2.3)	26 903 (+10.6)
碇泊處 Anchorages	13 968 (-5.4)	103 004 (+5.1)	313 (-2.5)	380 (+146.2)	14 281 (-5.3)	103 384 (+5.4)
浮泡 Buoys	44 (-37.1)	156 (-31.9)	1 657 (+46.9)	11 151 (+51.2)	1 701 (+42.0)	11 307 (+48.6)
總計 Total	27 510 (-4.4)	397 105 (-0.5)	2 903 (+16.2)	24 509 (+18.1)	30 413 (-2.7)	421 613 (+0.4)

表3
TABLE 3

2013年按船舶類型分析抵港船舶的船次
Vessel Arrivals by Ship Type, 2013

船舶類型 Ship Type	遠洋輪船 Ocean Vessels		內河船隻 River Vessels		總計 Total	
	抵港船次 No. of Vessel Arrivals	比重 百分率 Percentage Share	抵港船次 No. of Vessel Arrivals	比重 百分率 Percentage Share	抵港船次 No. of Vessel Arrivals	比重 百分率 Percentage Share
	(%)		(%)		(%)	
運車船 Car Carrier	145 (+20.8)	0.5%	16 (+433.3)	@	161 (+30.9)	0.1%
化學品運載船 Chemical Carrier/Tanker	387 (+15.2)	1.3%	175 (-16.3)	0.1%	562 (+3.1)	0.3%
普通貨船 Conventional Cargo Vessel	2 215 (+0.5)	7.4%	6 718 (-6.0)	4.3%	8 933 (-4.4)	4.8%
其他貨船 Other Cargo Vessel	0 (-)	0%	0 (-)	0%	0 (-)	0%
郵船／渡輪 Cruise/Ferry	2 601 (+19.3)	8.7%	80 251 (-2.2)	50.9%	82 852 (-1.7)	44.2%
散裝乾貨船 Dry Bulk Carrier	2 446 (+26.9)	8.2%	8 092 (+55.3)	5.1%	10 538 (+47.6)	5.6%
漁船／魚類加工船 Fishing/Fish Processing Vessel	307 (-3.5)	1.0%	N.A.	N.A.	307 (-3.5)	0.2%
全槽格式貨櫃船 Fully Cellular Container Vessel	19 018 (-10.2)	63.6%	50 503 (-7.6)	32.0%	69 521 (-8.3)	37.1%
液化氣體運載船 Gas Carrier/Tanker	309 (-6.4)	1.0%	128 (+62.0)	0.1%	437 (+6.8)	0.2%
駁船／躉船／貨艇 Lighter/Barge/Cargo Junk	267 (+281.4)	0.9%	3 425 (-3.8)	2.2%	3 692 (+1.7)	2.0%
油輪 Oil Tanker	818 (-16.5)	2.7%	438 (-21.1)	0.3%	1 256 (-18.2)	0.7%
礦沙／散貨／油類混用船 Ore/Bulk/Oil (OBO) Carrier	13 (-48.0)	@	2 (-33.3)	@	15 (-46.4)	@
其他液體運載船 Other Fluid Carrier	0 (-)	0%	0 (-)	0%	0 (-)	0%
遊樂船 Pleasure Vessel	238 (+0.4)	0.8%	N.A.	N.A.	238 (+0.4)	0.1%
滾裝卸式船 Roll On/Roll Off	242 (-0.4)	0.8%	21 (-8.7)	@	263 (-1.1)	0.1%
半貨櫃船 Semi-container Vessel	305 (+26.0)	1.0%	4 985 (+35.1)	3.2%	5 290 (+34.6)	2.8%
拖船 Tug	324 (+120.4)	1.1%	2 624 (-6.8)	1.7%	2 948 (-0.5)	1.6%
其他 Others	280 (+61.8)	0.9%	247 (+47.0)	0.2%	527 (+54.5)	0.3%
總計 Total	29 915 (-2.6)	100.0%	157 625 (-1.6)	100.0%	187 540 (-1.7)	100.0%

表 4
TABLE 4

2013 年按船旗分析抵港船舶的船次
Vessel Arrivals by Flag, 2013

船旗 Flag	遠洋輪船 Ocean Vessels		內河船隻 River Vessels		總計 Total	
	抵港船次 No. of Vessel Arrivals	淨註冊噸位 (千噸) NRT ('000)	抵港船次 No. of Vessel Arrivals	淨註冊噸位 (千噸) NRT ('000)	抵港船次 No. of Vessel Arrivals	淨註冊噸位 (千噸) NRT ('000)
	(%)	(%)	(%)	(%)	(%)	(%)
安提瓜和巴布達 Antigua and Barbuda	905 (-6.6)	6 440 (-18.4)	85 (+26.9)	509 (-10.9)	990 (-4.4)	6 949 (-17.9)
巴哈馬 Bahamas	970 (+35.7)	9 614 (+23.8)	21 (-64.4)	335 (-9.4)	991 (+28.0)	9 949 (+22.3)
伯利茲 Belize	111 (-6.7)	299 (+4.7)	16 (-5.9)	41 (+49.3)	127 (-6.6)	340 (+8.6)
柬埔寨 Cambodia	141 (+6.8)	327 (-4.1)	7 (-50.0)	17 (-49.8)	148 (+1.4)	344 (-8.3)
中國內地 Mainland China	6 058 (-12.5)	22 297 (+11.4)	95 533 (-0.7)	61 920 (+10.4)	101 591 (-1.5)	84 217 (+10.7)
塞浦路斯 Cyprus	541 (-7.7)	5 843 (-14.3)	49 (+2.1)	726 (+10.8)	590 (-6.9)	6 570 (-12.1)
丹麥 Denmark	243 (+11.5)	11 730 (+8.9)	11 (+10.0)	368 (+4.5)	254 (+11.4)	12 099 (+8.8)
法國 France	66 (+13.8)	3 622 (+9.7)	4 (-50.0)	273 (-31.2)	70 (+6.1)	3 895 (+5.3)
德國 Germany	471 (-24.6)	18 381 (-10.0)	26 (-45.8)	1 278 (-15.1)	497 (-26.2)	19 658 (-10.4)
希臘 Greece	121 (-2.4)	5 423 (+11.4)	8 (-11.1)	218 (-45.9)	129 (-3.0)	5 642 (+7.0)
香港 Hong Kong	3 467 (+15.5)	59 132 (+6.6)	60 277 (-2.9)	19 061 (-3.9)	63 744 (-2.0)	78 194 (+3.9)
印尼 Indonesia	63 (+40.0)	595 (+45.8)	19 (+58.3)	149 (-4.3)	82 (+43.9)	744 (+32.0)
意大利 Italy	131 (-3.0)	3 302 (-5.0)	1 (-75.0)	31 (-67.2)	132 (-5.0)	3 333 (-6.6)
牙買加 Jamaica	583 (※)	4 586 (※)	0 (-100.0)	0 (-100.0)	583 (※)	4 586 (※)
基里巴斯共和國 Republic of Kiribati	172 (-76.7)	1 069 (-80.8)	19(+216.7)	71(+371.8)	191 (-74.4)	1 140 (-79.6)
南韓 Republic of Korea	816 (+17.6)	5 764 (+1.7)	62 (+6.9)	369 (-11.5)	878 (+16.8)	6 134 (+0.8)
利比里亞 Liberia	2 724 (-19.0)	59 578 (-15.7)	210 (-2.3)	5 755 (-5.3)	2 934 (-18.0)	65 333 (-14.9)

表 4 – 續
TABLE 4 – Cont'd

船旗 Flag	遠洋輪船 Ocean Vessels		內河船隻 River Vessels		總計 Total	
	抵港船次 No. of Vessel Arrivals	淨註冊噸位 (千噸) NRT ('000)	抵港船次 No. of Vessel Arrivals	淨註冊噸位 (千噸) NRT ('000)	抵港船次 No. of Vessel Arrivals	淨註冊噸位 (千噸) NRT ('000)
	(%)	(%)	(%)	(%)	(%)	(%)
馬來西亞 Malaysia	61 (+74.3)	310 (-44.3)	16 (+100.0)	116 (-2.5)	77 (+79.1)	426 (-36.9)
馬耳他 Malta	435 (+32.2)	11 298 (+46.6)	42 (+55.6)	827 (+23.9)	477 (+34.0)	12 125 (+44.8)
馬紹爾群島 Marshall Islands	1 004 (-10.8)	19 149 (+0.7)	75 (-7.4)	1 285 (+5.3)	1 079 (-10.5)	20 434 (+0.9)
巴拿馬 Panama	6 059 (-3.1)	93 715 (-6.1)	625 (-15.0)	10 964 (-13.5)	6 684 (-4.3)	104 679 (-6.9)
塞拉利昂 Sierra Leone	73 (+32.7)	171 (+39.6)	7 (+40.0)	17 (+46.7)	80 (+33.3)	189 (+40.2)
新加坡 Singapore	2 545 (+5.3)	41 163 (+21.2)	232 (+0.9)	2 281 (-24.2)	2 777 (+4.9)	43 444 (+17.5)
聖文森特和 格林納丁斯 St. Vincent and the Grenadines	105 (+22.1)	532 (-10.2)	8 (-20.0)	6 (-90.6)	113 (+17.7)	538 (-18.4)
台灣 Taiwan	598 (+7.7)	5 111 (+49.1)	35 (+133.3)	334 (+154.9)	633 (+11.1)	5 446 (+53.0)
泰國 Thailand	236 (+42.2)	1 020 (+91.8)	9 (+200.0)	31 (+176.9)	245 (+45.0)	1 051 (+93.6)
英國 United Kingdom	586 (-9.7)	17 439 (+1.0)	60 (+22.4)	1 530 (+33.3)	646 (-7.4)	18 969 (+3.0)
越南 Vietnam	225 (+5.1)	865 (+7.2)	15 (0)	21 (-73.8)	240 (+4.8)	886 (^)
其他 ⁽¹⁾ Others ⁽¹⁾	405 (+8.3)	5 714 (+26.2)	153 (-8.9)	1 171 (+49.3)	558 (+3.0)	6 885 (+29.6)
總計 Total	29 915 (-2.6)	414 491 (+0.6)	157 625 (-1.6)	1 097 707 (+2.6)	187 540 (-1.7)	524 198 (+1.0)

註釋： (1) 包括所有在二零一三年遠洋輪船抵港船次總數少於 50 船次的旗號。

Note: Including those flags of which the total number of ocean vessel arrivals in 2013 being less than 50.

表 5
TABLE 5

2013 年按船旗分析曾停靠香港的船舶數目和淨註冊噸位
Number and NRT of Vessels Calling Hong Kong by Flag, 2013

船旗 Flag	遠洋輪船 Ocean Vessels				內河船隻 River Vessels			
	船舶數目 Number of Vessels		淨註冊噸位 (千噸) NRT ('000)		船舶數目 Number of Vessels		淨註冊噸位 (千噸) NRT ('000)	
	(%)		(%)		(%)		(%)	
安提瓜和巴布達 Antigua and Barbuda	102	(-17.1)	896	(-24.6)	35	(-14.6)	277	(-29.5)
巴哈馬 Bahamas	101	(+13.5)	2 090	(+4.0)	15	(+7.1)	317	(+52.3)
伯利茲 Belize	45	(+36.4)	111	(+20.6)	12	(-14.3)	32	(+26.2)
柬埔寨 Cambodia	41	(-16.3)	83	(-34.2)	6	(-33.3)	15	(-25.3)
中國內地 Mainland China	624	(+10.8)	6 516	(+22.0)	1 535	(+5.1)	5 233	(+43.3)
塞浦路斯 Cyprus	82	(-12.8)	1 486	(-11.0)	22	(-4.3)	371	(-3.6)
丹麥 Denmark	70	(+16.7)	3 029	(+14.4)	11	(+10.0)	368	(+4.5)
德國 Germany	91	(-35.9)	3 532	(-24.0)	20	(-39.4)	818	(-23.8)
希臘 Greece	41	(-6.8)	1 865	(+15.3)	8	(+14.3)	218	(-23.0)
香港 Hong Kong	788	(+5.2)	14 217	(+16.1)	566	(-4.1)	3 090	(+5.0)
意大利 Italy	39	(+25.8)	984	(+37.0)	1	(-66.7)	31	(-55.1)
日本 Japan	24	(+41.2)	627	(+57.1)	3	(+200.0)	135	(+134.0)
基里巴斯共和國 Republic of Kiribati	22	(0)	71	(+5.6)	10	(+150.0)	31	(+254.2)
南韓 Republic of Korea	120	(-9.1)	834	(-13.0)	35	(-12.5)	309	(+3.5)
利比里亞 Liberia	543	(-4.6)	14 062	(-1.3)	134	(+1.5)	3 731	(+7.1)
馬來西亞 Malaysia	41	(+78.3)	215	(-27.8)	10	(+25.0)	93	(-21.8)

表 5 – 續
TABLE 5 – Cont'd

船旗 Flag	遠洋輪船 Ocean Vessels				內河船隻 River Vessels			
	船舶數目 Number of Vessels		淨註冊噸位 (千噸) NRT ('000)		船舶數目 Number of Vessels		淨註冊噸位 (千噸) NRT ('000)	
	(%)		(%)		(%)		(%)	
馬耳他 Malta	138	(+20.0)	4 051	(+42.1)	32	(+88.2)	717	(+70.3)
馬紹爾群島 Marshall Islands	243	(+7.5)	5 126	(+19.6)	47	(-20.3)	887	(-17.2)
巴拿馬 Panama	1 299	(+0.2)	23 727	(+2.4)	364	(-0.5)	6 347	(+4.0)
塞拉利昂 Sierra Leone	22	(+10.0)	37	(-52.8)	6	(+20.0)	14	(+21.3)
新加坡 Singapore	423	(+7.6)	8 381	(+26.3)	128	(+2.4)	1 649	(-10.1)
聖文森特和 格林納丁斯 St. Vincent and the Grenadines	29	(-19.4)	168	(-40.3)	8	(-11.1)	6	(-87.7)
台灣 Taiwan	43	(-4.4)	638	(+5.4)	9	(+28.6)	112	(+76.7)
泰國 Thailand	37	(+23.3)	116	(+10.9)	8	(+166.7)	28	(+152.1)
英國 United Kingdom	161	(+3.9)	4 884	(-1.0)	37	(+23.3)	1 222	(+45.1)
越南 Vietnam	55	(+5.8)	250	(-5.5)	10	(-23.1)	15	(-80.7)
其他 ⁽¹⁾ Others ⁽¹⁾	223	(-2.2)	3 460	(+13.3)	74	(0)	1 152	(+34.0)
總計 Total	5 447	(+2.1)	101 455	(+7.3)	3 146	(+1.5)	27 218	(+10.1)

備註： 此表內的遠洋輪船及內河船隻數目不能直接地加在一起，因為同一艘船舶在一年內可能會被歸納於遠洋及內河船舶類別，視乎該船舶在該年度不同的抵港旅程是否超越內河航限而定。

Remark: The number of ocean vessels and river vessels in this table cannot be grouped together by simple addition as the same vessel may be classified as ocean and river vessel during a year depending on whether her trips to Hong Kong in that year were beyond the river trade limits or not.

註釋： (1) 包括所有在二零一三年遠洋輪船抵港船舶總數少於 20 船舶的旗號。

Note: Including those flags of which the total number of ocean vessels calling Hong Kong in 2013 being less than 20.

表 6
TABLE 6

2013 年按船舶類型分析離港船舶的平均在港停留時間
Average Time in Port for Vessels Departing Hong Kong by Ship Type, 2013

小時
Hours

船舶類型 Ship Type	遠洋輪船 Ocean Vessels	內河船隻 River Vessels	總計 Total
運車船 Car Carrier	**	**	**
化學品運載船 Chemical Carrier/Tanker	20	83	28
普通貨船 Conventional Cargo Vessel	35	26	28
郵船／渡輪 Cruise/Ferry	13	N.A.	N.A.
散裝乾貨船 Dry Bulk Carrier	25	27	26
漁船／魚類加工船 Fishing/Fish Processing Vessel	78	N.A.	N.A.
全槽格式貨櫃船 Fully Cellular Container Vessel	24	42	37
液化氣體運載船 Gas Carrier/Tanker	48	85	55
駁船／躉船／貨艇 Lighter/Barge/Cargo Junk	83	69	70
油輪 Oil Tanker	37	134	63
礦沙／散貨／油類混用船 Ore/Bulk/Oil (OBO) Carrier	**	**	**
滾裝卸式船 Roll On/Roll Off	22	11	21
半貨櫃船 Semi-container Vessel	37	52	51
拖船 Tug	120	109	110
其他 Others	25	55	43
所有船舶類型 All Ship Types	29	44	40

註釋： ** 包括在“其他”。
Note: ** Included in “Others”.

表 7
TABLE 7

2013 年在貨櫃碼頭處理貨櫃的遠洋輪船統計數字
Statistics on Ocean Vessels with Containers Handled in Container Terminals, 2013

項目 Item	抵港船次 No. of Vessel Arrivals	比重百分率 Percentage Share
在貨櫃碼頭處理貨櫃的遠洋輪船 Ocean Vessels with Containers Handled in Container Terminals	(%) 11 639 (-5.7)	100.0%
- 按載重噸分析 Analysed by Deadweight Tonnage (DWT)		
少於 10 000 載重噸 Under 10 000 DWT	460 (+9.5)	4.0%
10 000 - 19 999 載重噸 10 000 - 19 999 DWT	1 935 (+6.6)	16.6%
20 000 - 29 999 載重噸 20 000 - 29 999 DWT	1 954 (-15.1)	16.8%
30 000 - 39 999 載重噸 30 000 - 39 999 DWT	1 379 (-1.9)	11.8%
40 000 - 49 999 載重噸 40 000 - 49 999 DWT	405 (-34.4)	3.5%
50 000 - 99 999 載重噸 50 000 - 99 999 DWT	3 834 (-10.9)	32.9%
100 000 載重噸及以上 100 000 DWT and above	1 672 (+12.7)	14.4%
- 按主要貿易地區／國家分析 (根據所申報的上一個停靠港口) Analysed by Principal Trading Region/Country (Based on Reported Previous Port)		
亞洲 Asia	10 307 (-4.2)	88.6%
– 中國內地 – Mainland China	2 660 (-7.4)	22.9%
– 台灣 – Taiwan	2 393 (-0.3)	20.6%
– 新加坡 – Singapore	1 400 (-10.1)	12.0%
– 越南 – Vietnam	1 212 (-3.8)	10.4%
– 泰國 – Thailand	798 (+16.0)	6.9%
– 日本 – Japan	565 (-13.7)	4.9%
– 韓國 – Korea	510 (+4.7)	4.4%
– 其他 – Others	769 (-8.5)	6.6%
北美洲 North America	354 (-29.2)	3.0%
西歐 Western Europe	294 (-23.2)	2.5%
中美洲、南美洲 Central and South America	253 (+4.1)	2.2%
大洋洲 Oceania	157 (-15.1)	1.3%
獨立國家聯合體及東歐 CIS and Eastern Europe	88 (+125.6)	0.8%
非洲 Africa	64 (+6.7)	0.5%
中東 Middle East	28 (-40.4)	0.2%
其他 Others	94 (-26.0)	0.8%
使用貨櫃碼頭處理貨櫃的遠洋輪船在香港港口的平均停留時間 (小時) Average Time in Hong Kong Port for Ocean Vessels with Containers Handled in Container Terminals (Hours)	16.1 ⁽¹⁾	

註釋： (1) 指在香港水域停留的整段時間而非單在貨櫃碼頭逗留的時間。

Note: Refers to total time in Hong Kong waters and not only time at container terminals.

表 8
TABLE 8

2013 年按夏季吃水分析抵港遠洋輪船的船次
Ocean Vessel Arrivals by Summer Draft, 2013

夏季吃水 (米) Summer Draft (m)	抵港船次 No. of Vessel Arrivals		比重百分率 Percentage Share
		(%)	
< 2	60	(-20.0)	0.2%
2 – < 4	3 777	(-17.0)	12.6%
4 – < 6	3 516	(+2.3)	11.8%
6 – < 8	3 034	(+0.2)	10.1%
8 – < 10	6 568	(+0.4)	22.0%
10 – < 12	3 770	(-1.5)	12.6%
12 – < 14	3 487	(-1.0)	11.7%
14 – < 16	4 666	(-2.2)	15.6%
16 – < 18	509	(+4.9)	1.7%
≥ 18	528	(+13.5)	1.8%
總計 Total	29 915	(-2.6)	100.0%

表 9
TABLE 9

2013 年按船舶總長度分析抵港遠洋輪船的船次
Ocean Vessel Arrivals by Vessel Length Overall, 2013

船舶總長度 (米) Vessel Length Overall (m)	抵港船次 No. of Vessel Arrivals		比重百分率 Percentage Share
		(%)	
< 30	564	(+33.3)	1.9%
30 – < 50	503	(+30.0)	1.7%
50 – < 100	6 003	(-12.0)	20.1%
100 – < 150	6 155	(+8.0)	20.6%
150 – < 200	7 512	(-3.0)	25.1%
200 – < 250	2 941	(-7.7)	9.8%
250 – < 300	3 575	(-7.7)	12.0%
300 – < 350	2 070	(+1.8)	6.9%
≥ 350	592	(+11.5)	2.0%
總計 Total	29 915	(-2.6)	100.0%

表 10
TABLE 10

2013 年按主要來港原因分析抵港遠洋輪船的船次
Ocean Vessel Arrivals by Main Reason of Call, 2013

主要來港原因 Main Reason of Call	抵港船次 No. of Vessel Arrivals		比重百分率 Percentage Share
		(%)	
裝貨、卸貨 Loading and Discharging Cargo	19 634	(-8.3)	65.6%
旅遊 (郵輪) Tour (Cruise)	2 596	(+19.9)	8.7%
交換文件 Switch Documents	1 895	(+4.2)	6.3%
船上用品補給 (燃料除外) Taking Stores (Except Bunkers)	1 533	(+16.1)	5.1%
卸貨 Discharging Cargo	1 295	(-21.8)	4.3%
補充燃料 Bunkers	1 131	(+16.6)	3.8%
裝貨 Loading Cargo	540	(-11.3)	1.8%
消遣／運動 (遊艇) Pleasure/Sports (Pleasure Vessels)	237	(0)	0.8%
船員變動 (貨船) Change of Crew (Cargo Vessels)	49	(-41.0)	0.2%
緊急修理、非例行入乾塢 Emergency Repair, Non-routine Dry Docking	47	(-21.7)	0.2%
例行入乾塢 Routine Dry Docking	19	(-9.5)	0.1%
其他 Others	939	(+174.6)	3.1%
總計 Total	29 915	(-2.6)	100.0%

表 11
TABLE 11

2013 年按停泊地點及有否目的地分析郵輪抵港船次
Cruise Arrivals by Berthing Location by Whether the Trip with Destination, 2013

停泊地點 Berthing Location	郵輪抵港船次 ⁽¹⁾ Number of Cruise Arrivals ⁽¹⁾					
	有目的地 With Destination		公海 ⁽²⁾ High Seas ⁽²⁾		總計 Total	
	數目 Number	變動百分率 Percentage Change	數目 Number	變動百分率 Percentage Change	數目 Number	變動百分率 Percentage Change
海運大廈 Ocean Terminal	61	-10.3%	360	0.0%	421	-1.6%
中國客運碼頭 China Ferry Terminal	8	-27.3%	481	-18.1%	489	-18.2%
浮泡和碇泊處 Buoys and Anchorages	4	-20.0%	1 662	+48.7%	1 666	+48.4%
其他 ⁽³⁾ Others ⁽³⁾	16	+14.3%	4	+33.3%	20	+17.6%
總計 Total	89	-9.2%	2 507	+21.2%	2 596	+19.9%

- 註釋： (1) 不包括非載客的船次，例如緊急修理、補充燃料等。
Notes: Excluding those trips not for passenger carrying, e.g. emergency repair, bunkers, etc.
- (2) 根據海商法，公海的定義是指不屬於任何國家領海或內水的海域。
According to Maritime Law, High Seas is defined to be the waters lying outside the territorial waters of any countries.
- (3) 包括啟德郵輪碼頭、私人泊位和倉庫碼頭、船塢及葵青貨櫃碼頭。
Including the Kai Tak Cruise Terminal, private berths and wharves, docks, and Kwai Tsing Container Terminals.

資料來源： 海事處船隻航行監察中心
Data Source: Vessel Traffic Centre, Marine Department

表 12
TABLE 12

2013 年跨境客運碼頭的抵港及離港航次統計數字^{(1) (2)}
Statistics on Vessel Arrivals and Departures at Cross-boundary Ferry Terminals, 2013^{(1) (2)}

來往 From/To	運輸工具類別 Type of Carrier	提供服務的船舶/ 直升機數目 No. of Vessels/ Helicopters in Services		抵港 Arrivals				離港 Departures			
				航次 No. of Trips		淨註冊噸位 (千噸) NRT ('000)		航次 No. of Trips		淨註冊噸位 (千噸) NRT ('000)	
			(%)		(%)		(%)		(%)		(%)
澳門 Macau	雙體船 Catamaran	40	(-2.4)	39 577	(-3.2)	8 510	(-2.6)	40 277	(-3.8)	8 660	(-3.1)
	噴射飛翼船 Jetfoil	11	(0)	14 703	(-0.8)	1 436	(-0.7)	14 865	(-0.6)	1 452	(-0.6)
澳門 Macau	直升機 Helicopter	5	(0)	6 955	(-6.4)	-	(-)	6 955	(-6.4)	-	(-)
小計 – 澳門 Sub-total - Macau				61 235	(-3.0)	9 946	(-2.3)	62 097	(-3.3)	10 111	(-2.8)
高明 Gaoming	雙體船 Catamaran	1	(-50.0)	356	(-3.3)	62	(-3.3)	356	(-3.8)	62	(-3.8)
虎門 Humen	雙體船 Catamaran	3	(-25.0)	1 814	(-0.8)	282	(-0.2)	1 808	(-0.6)	281	(+0.1)
江門 Jiangmen	雙體船 Catamaran	2	(0)	439	(+12.6)	60	(+12.6)	444	(+12.4)	61	(+12.4)
蓮花山 Lianhuashan	雙體船 Catamaran	4	(-20.0)	1 821	(-1.0)	301	(-1.6)	1 807	(-0.8)	299	(-1.3)
南沙 Nansha	雙體船 Catamaran	5	(0)	896	(-7.2)	168	(-7.2)	896	(-7.4)	168	(-7.4)
蛇口 Shekou	雙體船 Catamaran	17	(0)	7 060	(-3.4)	871	(-4.2)	6 997	(-3.6)	861	(-4.5)
深圳 Shenzhen	雙體船 Catamaran	3	(+50.0)	1 451	(-0.6)	234	(-0.4)	1 447	(-0.5)	233	(-0.3)
順德 Shunde	雙體船 Catamaran	4	(-20.0)	1 833	(-14.4)	308	(-14.4)	1 901	(-12.8)	320	(-12.8)
中山 Zhongshan	雙體船 Catamaran	6	(0)	3 605	(+6.9)	611	(+6.7)	4 033	(-0.8)	683	(-1.0)
珠海 Zhuhai	雙體船 Catamaran	11	(0)	6 696	(+0.4)	1 102	(-0.2)	6 694	(-0.1)	1 101	(-0.6)
小計 – 內河港口 Sub-total - River Trade Ports				25 971	(-1.4)	3 999	(-1.7)	26 383	(-2.4)	4 070	(-2.8)
廈門 Xiamen	大船 Conventional Ferry	1	(0)	8	(-27.3)	29	(-27.3)	8	(-27.3)	29	(-27.3)
公海 Open Sea	大船 Conventional Ferry	1	(0)	481	(-18.1)	1 722	(-18.1)	480	(-18.2)	1 718	(-18.2)
小計 – 大船 Sub-total – Conventional Ferry				489	(-18.2)	1 751	(-18.2)	488	(-18.4)	1 747	(-18.4)
總計 Total				87 695	(-2.7)	15 696	(-4.2)	88 968	(-3.2)	15 928	(-4.8)

註釋： (1) 包括港澳碼頭、中國客運碼頭及海天客運碼頭的統計。屯門客運碼頭於二零一二年七月一日停止運作。
Notes: Including Macau Ferry Terminal, China Ferry Terminal and SkyPier. The Tuen Mun Ferry Terminal ceased operation on 1 July 2012.

(2) 數字不包括非載客的跨境渡輪船次。
Non-passenger carrying trips of cross-boundary ferry are excluded.

資料來源： 海事處客運碼頭組及香港國際機場客運碼頭服務有限公司
Data Source: Ferry Terminals Section, Marine Department and Hong Kong International Airport Ferry Terminal Services Ltd

表 13
TABLE 13

2013年按船舶類型分析香港過境船舶的船次⁽¹⁾
Number of Vessel Trips Transit Hong Kong⁽¹⁾ by Ship Type, 2013

船舶類型 Ship Type	過境船次 Vessel Trips Transit Hong Kong	變動百分率 Percentage Change	淨註冊噸位 (千噸) NRT ('000)	變動百分率 Percentage Change
全槽格式貨櫃船 Fully Cellular Container Vessel	12 673	+1.7%	386 544	+2.1%
拖船 Tug	1 260	+1.4%	1 209	+28.9%
普通貨船 Conventional Cargo Vessel	490	+12.9%	2 435	+31.0%
散裝乾貨船 Dry Bulk Carrier	312	-5.7%	7 362	-3.5%
液化氣體運載船 Gas Carrier/Tanker	104	-8.0%	2 645	-17.6%
化學品運載船 Chemical Carrier/Tanker	98	-5.8%	553	+7.2%
油輪 Oil Tanker	115	+18.6%	803	-10.4%
其他 Others	397	+25.6%	847	+38.7%
總計 Total	15 449	+2.3%	402 400	+2.0%

註釋： (1) 只包括曾提供到達前通知書的過境香港水域船舶的船次。

Note: Including only those vessel trips transit Hong Kong waters with Pre-arrival Notification.

資料來源： 海事處船隻航行監察中心

Data Source: Vessel Traffic Centre, Marine Department

表 14
TABLE 14

2013 年按跨境客運碼頭分析客運量
Passenger Throughput by Cross-boundary Ferry Terminal, 2013

千位 ('000)

來往 From/To	澳門 Macau	中國內地 Mainland China	公海 Open Sea	總計 Total
	(%)	(%)	(%)	(%)
海事處轄下客運碼頭 ⁽¹⁾⁽²⁾ Marine Ferry Terminals ⁽¹⁾⁽²⁾				
港澳碼頭 Macau Ferry Terminal	16 202 ⁽³⁾ (-1.0)	1 367 (+4.3)	- (-)	17 569 (-0.6)
中國客運碼頭 China Ferry Terminal	4 865 (+9.7)	3 598 (+4.8)	183 (-24.0)	8 646 (+6.7)
海天客運碼頭 SkyPier	1 042 (+0.5)	1 627 (+4.4)	- (-)	2 669 (+2.8)
總計 Total	22 110 (+0.3)	6 592 (+4.6)	183 (-24.0)	28 884 (+1.0)

註釋： (1) 包括港澳碼頭及中國客運碼頭。屯門客運碼頭於二零一二年七月一日停止運作。
Notes: Including Macau Ferry Terminal and China Ferry Terminal. The Tuen Mun Ferry Terminal ceased operation on 1 July 2012.

(2) 數字與入境事務處發布的統計數字並不相等，原因是入境事務處的數字包括毋須付船費的乘客（例如不足一歲者）。
Figures do not tally with those released by the Immigration Department because figures of the Immigration Department cover passengers who are not required to pay fares (e.g. passengers less than one year of age).

(3) 數字包括乘搭直升機來往澳門的乘客。
Helicopter passengers to and from Macau are included.

資料來源： 海事處客運碼頭組及香港國際機場客運碼頭服務有限公司
Data Source: Ferry Terminals Section, Marine Department and Hong Kong International Airport Ferry Terminal Services Ltd

表 15
TABLE 15

2013 年按航線分析抵港及離港乘客人次
Passenger Arrivals and Departures by Route, 2013

I. 海事處轄下客運碼頭⁽¹⁾
Marine Ferry Terminals⁽¹⁾

來往 From/To	運輸工具類別 Type of Carrier	抵港乘客 Passenger Arrivals		離港乘客 Passenger Departures	
		乘客人次 (千位) Passengers ('000)	載客率 Passenger Load Factor	乘客人次 (千位) Passengers ('000)	載客率 Passenger Load Factor
		(%)	(%)	(%)	(%)
澳門 Macau	雙體船 Catamaran	7 132 (+1.6)	53.1% (+4.7)	9 545 (+3.3)	65.7% (+7.0)
	噴射飛翼船 Jetfoil	2 180 (-7.8)	61.8% (-7.1)	2 137 (-7.7)	59.9% (-7.1)
澳門 Macau	直升機 Helicopter	35 (-6.6)	42.3% (-0.2)	37 (-6.4)	44.8% (-0.1)
小計 – 澳門 Sub-total – Macau		9 348 (-0.8)	53.9% (+1.8)	11 719 (+1.1)	64.5% (+4.1)
高明 Gaoming	雙體船 Catamaran	73 (-11.7)	60.6% (-8.4)	67 (-15.3)	55.8% (-11.6)
江門 Jiangmen	雙體船 Catamaran	58 (+10.8)	37.1% (-1.5)	63 (+6.1)	40.0% (-5.6)
蓮花山 Lianhuashan	雙體船 Catamaran	302 (+2.7)	47.4% (+4.5)	273 (+0.2)	43.2% (+1.6)
南沙 Nansha	雙體船 Catamaran	92 (+15.4)	32.6% (+15.0)	98 (+14.9)	34.8% (+15.1)
蛇口 Shekou	雙體船 Catamaran	137 (+4.6)	25.9% (+18.0)	109 (-3.5)	20.6% (+8.9)
順德 Shunde	雙體船 Catamaran	361 (+2.4)	57.9% (+19.7)	353 (+2.0)	54.6% (+17.1)
中山 Zhongshan	雙體船 Catamaran	504 (+1.7)	52.5% (+1.1)	542 (+4.1)	51.7% (+7.6)
珠海 Zhuhai	雙體船 Catamaran	982 (+10.6)	54.9% (+10.4)	950 (+6.7)	53.2% (+7.0)
小計 – 內河港口 Sub-total – River Trade Ports		2 509 (+5.6)	49.2% (+9.0)	2 456 (+3.7)	47.2% (+7.8)
廈門 Xiamen	大船 Conventional Ferry	† (-28.9)	0.6% (-2.3)	† (-23.7)	0.7% (+4.9)
公海 Open Sea	大船 Conventional Ferry	91 (-23.9)	34.3% (-7.1)	91 (-24.1)	34.3% (-7.1)
小計 – 大船 Sub-total – Conventional Ferry		92 (-23.9)	33.7% (-6.9)	91 (-24.1)	33.7% (-6.9)
海事處轄下客運碼頭 Marine Ferry Terminals		11 948 (+0.2)	53.3% (+3.2)	14 267 (+1.3)	60.3% (+4.8)

註釋： (1) 包括港澳碼頭及中國客運碼頭。屯門客運碼頭於二零一二年七月一日停止運作。

Note: Including Macau Ferry Terminal and China Ferry Terminal. The Tuen Mun Ferry Terminal ceased operation on 1 July 2012.

表 15 - 續
TABLE 15 - Cont'd

II. 海天客運碼頭
SkyPier

來往 From/To	運輸工具類別 Type of Carrier	抵港乘客 Passenger Arrivals				離港乘客 Passenger Departures			
		乘客人次 (千位) Passengers ('000)		載客率 Passenger Load Factor		乘客人次 (千位) Passengers ('000)		載客率 Passenger Load Factor	
			(%)		(%)		(%)		(%)
澳門 Macau	雙體船 Catamaran	716	(-0.6)	38.3%	(+5.3)	326	(+3.1)	31.2%	(+13.4)
小計 - 澳門 Sub-total - Macau		716	(-0.6)	38.3%	(+5.3)	326	(+3.1)	31.2%	(+13.4)
虎門 Humen	雙體船 Catamaran	219	(-5.0)	39.4%	(-3.5)	90	(-2.2)	16.2%	(-1.0)
南沙 Nansha	雙體船 Catamaran	8	(-46.7)	15.6%	(-20.5)	1	(-69.5)	2.3%	(-54.9)
蛇口 Shekou	雙體船 Catamaran	659	(+3.3)	50.6%	(+3.2)	207	(+11.5)	16.1%	(+11.8)
深圳 Shenzhen	雙體船 Catamaran	129	(+5.4)	26.3%	(+5.5)	46	(-8.8)	9.3%	(-8.8)
中山 Zhongshan	雙體船 Catamaran	65	(+43.8)	19.9%	(+9.9)	45	(+39.1)	11.6%	(+30.9)
珠海 Zhuhai	雙體船 Catamaran	93	(+10.2)	20.4%	(+15.6)	65	(+10.2)	14.2%	(+15.5)
小計 - 內河港口 Sub-total - River Trade Ports		1 173	(+3.3)	36.8%	(+2.6)	454	(+7.3)	14.1%	(+8.4)
海天客運碼頭 SkyPier		1 889	(+1.8)	37.4%	(+3.6)	780	(+5.5)	18.3%	(+8.9)

資料來源： 海事處客運碼頭組及香港國際機場客運碼頭服務有限公司

Data Source: Ferry Terminals Section, Marine Department and Hong Kong International Airport Ferry Terminal Services Ltd

表16
TABLE 16

2013年按主要貨物裝卸地點分析貨櫃吞吐量
Container Throughput by Main Cargo Handling Location, 2013

千個標準貨櫃單位
'000 TEUs

類別 Category	貨櫃碼頭 Container Terminals			貨櫃碼頭以外 Other than Container Terminals			總計 Total
	遠洋 Ocean	內河 River	小計 Sub-total	遠洋 Ocean	內河 River	小計 Sub-total	
裝上 Loaded	(%)	(%)	(%)	(%)	(%)	(%)	(%)
載貨貨櫃 Laden Container	6 688 (-4.6)	1 079 (+19.6)	7 767 (-1.9)	441 (-20.8)	1 292 (-4.7)	1 733 (-9.4)	9 500 (-3.3)
空貨櫃 Empty Container	438 (-13.5)	209 (-13.2)	647 (-13.4)	19 (+35.4)	713 (-13.3)	732 (-12.5)	1 378 (-12.9)
小計 Sub-total	7 125 (-5.2)	1 288 (+12.7)	8 413 (-2.9)	460 (-19.5)	2 005 (-8.0)	2 465 (-10.3)	10 878 (-4.7)
卸下 Discharged							
載貨貨櫃 Laden Container	6 336 (-0.6)	1 160 (+7.5)	7 495 (+0.6)	892 (-1.6)	1 367 (-6.8)	2 259 (-4.8)	9 754 (-0.7)
空貨櫃 Empty Container	1 178 (-10.1)	31 (-39.3)	1 210 (-11.2)	18 (+81.4)	493 (-3.5)	511 (-1.8)	1 721 (-8.6)
小計 Sub-total	7 514 (-2.2)	1 191 (+5.3)	8 705 (-1.2)	910 (-0.7)	1 860 (-5.9)	2 770 (-4.3)	11 474 (-2.0)
合計 Overall							
載貨貨櫃 Laden Container	13 023 (-2.7)	2 239 (+13.0)	15 262 (-0.7)	1 333 (-8.9)	2 659 (-5.8)	3 992 (-6.9)	19 254 (-2.0)
空貨櫃 Empty Container	1 616 (-11.0)	240 (-17.9)	1 856 (-12.0)	37 (+55.0)	1 206 (-9.5)	1 243 (-8.4)	3 099 (-10.6)
總計 Total	14 639 (-3.7)	2 479 (+9.0)	17 118 (-2.0)	1 370 (-7.9)	3 864 (-7.0)	5 234 (-7.2)	22 352 (-3.3)

表 17
TABLE 17

2013 年按貨櫃碼頭以外的主要貨物裝卸地點分析裝卸的貨櫃
Containers Discharged/Loaded at Main Cargo Handling Locations Other than Container Terminals, 2013

千個標準貨櫃單位
'000 TEUs

主要貨物裝卸地點 (貨櫃碼頭以外) Main Cargo Handling Location (Other than Container Terminals)	遠洋 Ocean				內河 River				總計 Total	
	卸下 Discharged		裝上 Loaded		卸下 Discharged		裝上 Loaded			
	載貨貨櫃 Laden	空貨櫃 Empty	載貨貨櫃 Laden	空貨櫃 Empty	載貨貨櫃 Laden	空貨櫃 Empty	載貨貨櫃 Laden	空貨櫃 Empty	載貨貨櫃 Laden	空貨櫃 Empty
泊位和倉庫碼頭 Berths and Wharves	(%) 60 (-32.0)	(%) 7 (※)	(%) 54 (-34.8)	(%) 5 (※)	(%) 1 110 (-8.1)	(%) 466 (-4.7)	(%) 1 153 (-5.1)	(%) 593 (-13.4)	(%) 2 377 (-8.4)	(%) 1 070 (-8.8)
碇泊處 Anchorage	831 (+1.8)	12 (+21.2)	387 (-18.3)	14 (+0.5)	258 (-0.2)	27 (+22.7)	138 (-1.7)	120 (-12.5)	1 614 (-4.4)	172 (-5.5)
浮泡 Buoys	0 (-100.0)	0 (-)	0 (-100.0)	0 (-)	† (-95.0)	0 (-)	† (+129.1)	0 (-)	† (-80.3)	0 (-)
總計 Total	892 (-1.6)	18 (+81.4)	441 (-20.8)	19 (+35.4)	1 367 (-6.8)	493 (-3.5)	1 292 (-4.7)	713 (-13.3)	3 992 (-6.9)	1 243 (-8.4)

表 18
TABLE 18

2013 年按貨物種類及運輸方式劃分的裝卸港口貨物
Port Cargo Discharged/Loaded by Cargo Type and Mode of Transport, 2013

千公噸
'000 Tonnes

貨物種類 Cargo Type	海運 Seaborne		河運 River		水運總計 Waterborne Total	
	卸下 Discharged	裝上 Loaded	卸下 Discharged	裝上 Loaded	卸下 Discharged	裝上 Loaded
	(%)	(%)	(%)	(%)	(%)	(%)
包裝散貨 Break bulk cargo	8 478 (+34.3)	496 (+3.8)	1 557 (-16.3)	3 167 (-6.2)	10 035 (+22.8)	3663 (-5.0)
貨櫃貨物 Containerised cargo	81 364 (-0.5)	66 883 (-4.6)	24 803 (+1.4)	29 033 (+5.3)	106 168 (-0.1)	95 916 (-1.8)
無包裝液態散貨 Unpacked liquid bulk cargo	14 576 (-12.9)	421 (+5.0)	223 (-13.9)	244 (-24.0)	14 799 (-12.9)	666 (-7.9)
無包裝固態散貨 Unpacked solid bulk cargo	11 652 (-7.5)	368 (-8.7)	19 621 (+83.7)	13 168 (+10.7)	31 273 (+34.4)	13 535 (+10.1)
總計 Total	116 071 (-1.2)	68 168 (-4.5)	46 205 (+24.0)	45 612 (+5.7)	162 275 (+4.9)	113 780 (-0.7)

資料來源：政府統計處船隻及貨運統計組
Data Source: Shipping and Cargo Statistics Section, Census and Statistics Department

表 19
TABLE 19

海港繫泊浮泡統計數字
Harbour Mooring Buoys Statistics

A. 浮泡數目 (年底數字) Number of Buoys (Figures as at End of the Year)	2012	2013
"A 級" 繫泊浮泡數目 No. of "A Class" mooring buoys	13	13
"B 級" 繫泊浮泡數目 No. of "B Class" mooring buoys	4	4

B. 使用情況 Usage	2012	2013
"A 級" 浮泡訂用日數 Days booked for "A Class" buoys	1 639	1 610
"B 級" 浮泡訂用日數 Days booked for "B Class" buoys	139	126
"A 級" 浮泡訂用百分率 Percentage of "A Class" buoys used based on booking	37.1%	37.9%
"B 級" 浮泡訂用百分率 Percentage of "B Class" buoys used based on booking	9.6%	8.7%
上述數字只顯示訂用情況，實際使用率則如下： Whilst the above figures are indicative of booking usage, the actual physical occupancy rates are as follows:		
"A 級" 浮泡 "A 級" 浮泡	26.7%	24.2%
"B 級" 浮泡 "B 級" 浮泡	9.1%	2.0%

C. 浮泡保養 Buoys Maintenance	2012	2013
按期保養的燈浮標 Light Buoys maintained	111	114
按期保養的養魚區浮泡 Mariculture Buoys maintained	178	178
按期保養的小型繫泊浮泡 Minor Mooring maintained	166	166
按期保養的大型繫泊浮泡 Major Mooring maintained	39	39
按期保養的 "A 級" 海港繫泊浮泡 "A Class" Harbour Mooring maintained	13	13
按期保養的 "B 級" 海港繫泊浮泡 "B Class" Harbour Mooring maintained	4	4

資料來源： (A) & (B) 海事處船隻航行監察中心
Data Sources: Vessel Traffic Centre, Marine Department

(C) 海事處港口後勤組
Port Logistics Section, Marine Department

表 20
TABLE 20

2013 年按分布地點分析香港私人繫泊設備數目
Number of Private Moorings Laid in Hong Kong by Location, 2013

分布地點	Location	私人繫泊設備 數目 Number of Private Moorings
香港仔南避風塘及銅鑼灣避風塘 Aberdeen South Typhoon Shelter and Causeway Bay Typhoon Shelter		
香港仔南避風塘 (白沙灣)	Aberdeen South Typhoon Shelter (Pak Sha Wan)	1
香港仔南避風塘 (布廠灣)	Aberdeen South Typhoon Shelter (Po Chong Wan)	447
銅鑼灣避風塘	Causeway Bay Typhoon Shelter	186
小計	Sub-total	634
在所有其他避風塘及維多利亞港口界限以內的其他地方 Other Typhoon Shelters and Elsewhere within the Limits of Victoria Port		
長洲避風塘	Cheung Chau Typhoon Shelter	11
荔枝角	Lai Chi Kok	3
新油麻地避風塘	New Yau Ma Tei Typhoon Shelter	16
新油麻地避風塘 (海堤對開海面)	New Yau Ma Tei Typhoon Shelter (Outside Breakwater)	32
油麻地碇泊處以北海面	North of Yau Ma Tei Anchorage	1
藍巴勒海峽避風塘 (海堤對開海面)	Rambler Channel Typhoon Shelter (Outside Breakwater)	6
三家村避風塘	Sam Ka Tsuen Typhoon Shelter	1
汀九	Ting Kau	62
土瓜灣	To Kwa Wan	4
青衣以北海面	Tsing Yi North	4
荃灣	Tsuen Wan	90
屯門避風塘	Tuen Mun Typhoon Shelter	7
小計	Sub-total	237

表 20 – 續
TABLE 20 – Cont'd

分布地點	Location	私人繫泊設備 數目 Number of Private Moorings
在香港水域內的其他地方 Elsewhere in the Waters of Hong Kong		
香港仔西避風塘 (海堤對開海面)	Aberdeen West Typhoon Shelter (Outside Breakwater)	14
大灘海峽 赤徑口	Chek Keng Hau, Long Harbour	1
大嶼山 長沙欄	Cheung Sha Lan, Lantau Island	33
大嶼山 愉景灣	Discovery Bay, Lantau Island	6
南丫島 下尾灣 (電力站對開海面)	Ha Mei Wan, Lamma Island (Off Power Station)	4
西貢 白沙灣	Hebe Haven, Sai Kung	680
將軍澳	Junk Bay	1
西貢 滘西洲	Kau Sai Chau, Sai Kung	4
南丫島 鹿洲灣	Luk Chau Wan, Lamma Island	1
熨波洲	Middle Island	87
大嶼山 稔樹灣	Nim Shue Wan, Lantau Island	15
北大嶼山	North Lantau	1
大埔 船灣海	Shuen Wan Hoi, Tai Po	34
赤柱正灘	Stanley Main Beach	4
大欖	Tai Lam	3
大埔 大美督	Tai Mei Tuk, Tai Po	32
西貢 大網仔	Tai Mong Tsai, Sai Kung	7
西貢 大網仔 (阿公灣)	Tai Mong Tsai, Sai Kung (A Kung Wan)	3
大潭港	Tai Tam Harbour	45
西貢 斬竹灣	Tsam Chuk Wan, Sai Kung	10
青衣以西海面	Tsing Yi West	3
西貢 早禾坑	Tso Wo Hang, Sai Kung	18
屯門避風塘 (海堤對開海面)	Tuen Mun Typhoon Shelter (Outside Breakwater)	6
黃竹角海 往灣	Wong Wan, Wong Chuk Kok Hoi	1
南丫島 榕樹灣	Yung Shue Wan, Lamma Island	2
小計	Sub-total	1 015
總計	Total	1 886

資料來源： 海事處私用繫泊分組
Data Source: Private Mooring Sub-unit, Marine Department

表 21
TABLE 21

碇泊處一覽 (截至 2013 年年底)
List of Anchorages (as at year end 2013)

碇泊處 Anchorages	面積 (公頃) Area (hectares)
A. 檢疫及入境船隻碇泊處 Quarantine and Immigration Anchorages	
1. 東面檢疫及入境船隻碇泊處 Eastern Quarantine and Immigration Anchorage	35.1
2. 屯門入境船隻碇泊處 Tuen Mun Immigration Anchorage	89.9
3. 西面檢疫及入境船隻碇泊處 Western Quarantine and Immigration Anchorage	121.1
小計 Sub-total	246.1
B. 危險品碇泊處 Dangerous Goods Anchorages	
1. 將軍澳危險品碇泊處 Junk Bay Dangerous Goods Anchorage	28.9
2. 交椅洲危險品碇泊處 Kau Yi Chau Dangerous Goods Anchorage	288.2
3. 大鵬灣危險品碇泊處 Mirs Bay Dangerous Goods Anchorage	316.5
4. 糧船灣海危險品碇泊處 Rocky Harbour Dangerous Goods Anchorage	26.9
5. 南丫島南危險品碇泊處 South Lamma Dangerous Goods Anchorage	228.5
6. 荃灣危險品碇泊處 Tsuen Wan Dangerous Goods Anchorage	61.9
7. 西面危險品碇泊處 Western Dangerous Goods Anchorage	220.8
8. 危險品留用碇泊處 Reserved Dangerous Goods Anchorage	37.3
小計 Sub-total	1 209.0
C. 維修碇泊處 Servicing Anchorages	
1. 奇力 1 號碇泊處 Kellett Anchorage No.1	74.7
2. 奇力 2 號碇泊處 Kellett Anchorage No.2	230.4
3. 奇力 3 號碇泊處 Kellett Anchorage No.3	102.8
4. 馬灣碇泊處 Ma Wan Anchorage	138.4
5. 南丫島北碇泊處 North Lamma Anchorage	375.1
6. 南丫島西北碇泊處 North West Lamma Anchorage	553.9
7. 半山石碇泊處 Pun Shan Shek Anchorage	352.1
8. 深水角 1 號碇泊處 Sham Shui Kok Anchorage No.1	72.6
9. 深水角 2 號碇泊處 Sham Shui Kok Anchorage No.2	35.6
10. 西面 1 號碇泊處 Western Anchorage No.1	310.6
11. 西面 2 號碇泊處 Western Anchorage No.2	278.7
12. 西面 3 號碇泊處 Western Anchorage No.3	272.4
13. 油麻地碇泊處 Yau Ma Tei Anchorage	105.0
小計 Sub-total	2 902.3

表 21 – 續
TABLE 21 – Cont'd

碇泊處 Anchorages		面積 (公頃) Area (hectares)
D. 領航特別碇泊處 Pilotage Special Anchorages		
1. 南丫島東南碇泊處	South East Lamma Anchorage	285.5
2. 南丫島西南碇泊處	South West Lamma Anchorage	228.4
3. 龍鼓水道碇泊處	Urmston Road Anchorage	190.0
小計	Sub-total	703.9
E. 遮蔽碇泊處 Sheltered Anchorages		
1. 柴灣貨物裝卸灣	Chai Wan Cargo Basin	11.2
2. 吉澳	Kat O	1.6
3. 沙頭角	Sha Tau Kok	0.6
4. 大澳	Tai O	4.0
5. 荃灣	Tsuen Wan	3.7
6. 熨波洲	Middle Island	6.9
7. 白沙灣	Pak Sha Wan (Hebe Haven)	84.0
8. 西貢	Sai Kung	4.3
9. 聖士提反灣	St. Stephen's Bay	1.3
10. 大美督	Tai Mei Tuk	12.3
11. 大潭港	Tai Tam Harbour	5.7
12. 汀九	Ting Kau	0.7
13. 斬竹灣	Tsam Chuk Wan (Jade Bay)	7.5
小計	Sub-total	143.8
總計	Total	5 205.1

資料來源： 海事處策劃、發展協調及港口保安部

Data Source: Planning, Development & Port Security Branch, Marine Department

表 22
TABLE 22

避風塘一覽 (截至 2013 年年底)
List of Typhoon Shelters (as at year end 2013)

避風塘	Typhoon Shelters	面積 (公頃) Area (hectares)
1. 南香港仔避風塘	Aberdeen South Typhoon Shelter	26.1
2. 西香港仔避風塘	Aberdeen West Typhoon Shelter	34.2
3. 銅鑼灣避風塘	Causeway Bay Typhoon Shelter	10.6
4. 長洲避風塘	Cheung Chau Typhoon Shelter	50.0
5. 喜靈洲避風塘	Hei Ling Chau Typhoon Shelter	76.6
6. 觀塘避風塘	Kwun Tong Typhoon Shelter	33.8
7. 新油麻地避風塘	New Yau Ma Tei Typhoon Shelter	64.6
8. 藍巴勒海峽避風塘	Rambler Channel Typhoon Shelter	12.9
9. 三家村避風塘	Sam Ka Tsuen Typhoon Shelter	1.9
10. 筲箕灣避風塘	Shau Kei Wan Typhoon Shelter	17.2
11. 船灣避風塘	Shuen Wan Typhoon Shelter	10.3
12. 土瓜灣避風塘	To Kwa Wan Typhoon Shelter	14.8
13. 屯門避風塘	Tuen Mun Typhoon Shelter	56.8
14. 鹽田仔避風塘	Yim Tin Tsai Typhoon Shelter	9.2
總計	Total	419.0

備註： 只包括於二零零七年一月二日在政府憲報 (編號: L.N. 285/2006) 中所公布的避風塘。
Remark: Including only those typhoon shelters promulgated in the Government Gazette (L.N. 285 of 2006) on 2.1.2007.

資料來源： 海事處策劃、發展協調及港口保安部
Data Source: Planning, Development & Port Security Branch, Marine Department

表 23
TABLE 23

公眾貨物裝卸區一覽 (截至 2013 年年底)
List of Public Cargo Working Areas (as at year end 2013)

公眾貨物裝卸區 Public Cargo Working Area	面積 (公頃) Area (hectares)	符合發牌條件之 停泊位長度 (米) Licensable Seafrontage (metres)
1. 柴灣公眾貨物裝卸區 Chai Wan Public Cargo Working Area	2.1	548
2. 新油麻地公眾貨物裝卸區 New Yau Ma Tei Public Cargo Working Area	6.8	1 212
3. 藍巴勒海峽公眾貨物裝卸區 Rambler Channel Public Cargo Working Area	4.1	1 040
4. 昂船洲公眾貨物裝卸區 Stonecutters Island Public Cargo Working Area	3.6	640
5. 屯門公眾貨物裝卸區 Tuen Mun Public Cargo Working Area	3.3	616
6. 西區公眾貨物裝卸區 Western District Public Cargo Working Area	3.3	880
總計 Total	23.2	4 936

資料來源： 海事處貨物裝卸組
Data Source: Cargo Handling Section, Marine Department

表 24
TABLE 24

垃圾收集、油污和檢控個案統計數字
Refuse Collection, Oil Pollution and Prosecution Statistics

A. 垃圾收集和油污事故
Refuse Collection and Oil Pollution Incident

	2012	2013
1. 從海港收集的垃圾 (公噸) Refuse collected from harbour (tonnes)	10 996	10 900
2. 從船舶收集的垃圾 (公噸) Refuse collected from vessel (tonnes)	4 351	4 348
3. 接報的疑似油污事故 (宗) Alleged oil pollution incidents reported (cases)	136	143

B. 檢控統計數字
Prosecution Statistics

罪行 Offence	陳詞／聆訊個案 No. of Cases Heard		定罪個案 No. of Cases Convicted		罰款 Fine (HK\$)	
	2012	2013	2012	2013	2012	2013
1. 違反碰撞規例 Breach of collision regulations	25	24	25	23	63,500	135,600
2. 違反牌照／准許證條件 Breach of licence/permit conditions	95	134	93	131	84,500	112,050
3. 未獲允許運載乘客／超額運載乘客 Carrying passengers without permission/excessive passengers	57	51	57	50	37,000	43,100
4. 不遵從指示 Failing to comply with direction	38	34	38	34	98,800	176,050
5. 沒有採取合理措施以確保受僱人在工程進行時戴著適當的安全頭盔 Failing to ensure the person employed to wear an appropriate safety helmet	33	52	33	52	32,300	31,170
6. 未獲允許讓該船隻緊靠著另一船舶而停放 Lying alongside another vessel without permission	90	57	90	57	64,550	57,150
7. 靠泊於已展示禁止船隻靠泊告示的岸壁／登岸梯級 Lying alongside seawall/landing steps prohibited by notice	21	18	21	18	13,900	16,900
8. 船上沒有合格船長／輪機員 No qualified master/engineer on board	268	238	259	231	199,800	197,650
9. 在沒有有效驗船證明書的情況下操作 Operating a vessel without valid certificate of survey	44	31	44	31	36,230	27,900
10. 沒持有有效證明書的人進行貨物處理 Person carrying out cargo handling without certificates	21	55	21	55	22,500	50,800
11. 超速行駛 Steaming in excessive speed	36	48	36	47	33,750	75,300
12. 使用沒有第三者風險保險的船隻 Using a vessel not insured against third party risk	77	56	77	55	92,700	78,050
13. 船隻未有領牌／並無有效牌照 Vessel was not licensed/did not have a valid licence	227	320	225	316	285,750	499,200
14. 其他海事罪行 Other marine offences	347	381	343	376	480,900	503,140
總計 Total	1 379	1 499	1 362	1 476	1,546,180	2,004,060

資料來源： (A) 海事處港口後勤組
(B) 海事處檢控小組

Data Source: (A) Port Logistics Section, Marine Department
(B) Prosecution Unit, Marine Department

表 25
TABLE 25

按噸位等級分析香港持牌船隻 (截至 2013 年年底)
Hong Kong Licensed Vessels by Tonnage Classification (as at year end 2013)

船隻類型 Vessel Type		60 淨噸及以下 60 Net Tons and Below	61 至 300 淨噸 61 - 300 Net Tons	300 淨噸以上 Over 300 Net Tons	總計 Total
第 I 類 Class I	(a) 渡輪船隻 Ferry Vessel	11	29	9	49
	(b) 水上食肆 Floating Restaurant	0	0	2	2
	(c) 小輪 Launch	183	50	0	233
	(d) 多用途船隻 Multi-purposes Vessel	11	7	2	20
	(e) 原始船隻 Primitive Vessel	69	1	0	70
	(f) 固定船隻 Stationary Vessel	0	0	0	0
	小計 Sub-total	274	87	13	374
第 II 類 Class II	(a) 起重機躉船 Crane Barge	1	5	7	13
	(b) 危險品運輸船 Dangerous Goods Carrier	1	10	19	30
	(c) 挖泥船 Dredger	0	3	4	7
	(d) 乾貨貨船 Dry Cargo Vessel	45	52	10	107
	(e) 非自航駁船 Dumb Lighter	4	53	430	487
	(f) 食油運輸船 Edible Oil Carrier	0	0	17	17
	(g) 平面工作躉 Flat-top Work Barge	13	28	28	69
	(h) 浮塢 Floating Dock	0	0	3	3
	(i) 水上工場 Floating Workshop	0	1	0	1
	(j) 開底躉船 Hopper Barge	0	3	35	38
	(k) 登岸平台 Landing Platform	37	1	0	38
	(l) 登岸浮躉 Landing Pontoon	7	25	14	46
	(m) 有毒液體物質運輸船 Noxious Liquid Substance Carrier	0	0	3	3
	(n) 石油運輸船 Oil Carrier	21	102	48	171
	(o) 領港船 Pilot Boat	21	0	0	21

表 25 – 續
TABLE 25 – Cont'd

船隻類型 Vessel Type		60 淨噸及以下 60 Net Tons and Below	61 至 300 淨噸 61 - 300 Net Tons	300 淨噸以上 Over 300 Net Tons	總計 Total
第 II 類 Class II (續) (Cont'd)	(p) 特別用途船隻 Special Purpose Vessel	3	2	4	9
	(q) 固定船隻 Stationary Vessel	114	29	5	148
	(r) 交通船 Transportation Boat	26	0	0	26
	(s) 交通舢舨 Transportation Sampan	88	0	0	88
	(t) 拖船 Tug	66	100	0	166
	(u) 供水船 Water Boat	13	7	0	20
	(v) 工作船 Work Boat	295	15	1	311
	小計 Sub-total	755	436	628	1 819
第 III 類 Class III	(a) 運魚船 Fish Carrier	15	8	0	23
	(b) 漁船舢舨 Fishing Sampan	1 604	0	0	1 604
	(c) 漁船 Fishing Vessel	641	1 496	0	2 137
	(d) 舷外機開敞式舢舨 Outboard Open Sampan	2 772	0	0	2 772
	小計 Sub-total	5 032	1 504	0	6 536
第 IV 類 Class IV	(a) 機械輔助帆船 Auxiliary Powered Yacht	N.A.	N.A.	N.A.	742
	(b) 遊樂船 Cruiser	N.A.	N.A.	N.A.	2 447
	(c) 開敞式遊樂船 Open Cruiser	N.A.	N.A.	N.A.	5 302
	小計 Sub-total	N.A.	N.A.	N.A.	8 491
住家船隻 ⁽¹⁾ Dwelling Vessel ⁽¹⁾	N.A.	N.A.	N.A.	4	
總計 Total	6 061⁽²⁾	2 027⁽²⁾	641⁽²⁾	17 224⁽³⁾	

註釋： (1) 全部在銅鑼灣避風塘。
Notes: All in Causeway Bay Typhoon Shelter.

資料來源： 海事處牌照及關務組
Data Source: Licensing and Port Formalities Section, Marine Department

(2) 不包括第 IV 類持牌船隻及住家船隻的數字。
Not including Class IV licensed vessels and dwelling vessels.

(3) 已包括 21 艘閑置船隻。
Including 21 laid-up vessels.

表 26
TABLE 26

船舶安全監督統計數字
Ship Safety Statistics

A. 貨船安全統計數字 Cargo Ships Safety Statistics	2012	2013
海事處註冊貨船品質審查／檢驗 Hong Kong Registered Cargo Ships Quality Checked/Inspected <ol style="list-style-type: none"> 1. 品質審查的註冊貨船數目 No. of quality checks on Hong Kong registered cargo ships 2. 品質檢驗和稽核貨船數目 No. of flag state quality control ship inspections and company visits 3. 審核船體、機械和設備圖則數目 No. of plans examined in respect of hull, machinery and equipment 	<p>1 970</p> <p>96</p> <p>342</p>	<p>2 105</p> <p>102</p> <p>295</p>
貨船設備安全證明書 Cargo Ship Safety Equipment Certificate (SEC) <ol style="list-style-type: none"> 1. 所簽發的豁免證明書數目 No. of exemption certificates issued 2. 應其他國家機關要求而檢驗的外來船舶，以簽發設備安全證明書 Foreign ships surveyed at the request of other national authorities for the issue of SEC 	<p>130</p> <p>0</p>	<p>158</p> <p>0</p>
貨船無線電安全證明書 Cargo Ship Safety Radio Certificate (SRC) <ol style="list-style-type: none"> 1. 所簽發的豁免證明書數目 No. of exemption certificates issued 2. 應其他國家機關要求而檢驗的外來船舶，以簽發無線電安全證明書 Foreign ships surveyed at the request of other national authorities for the issue of SRC 	<p>0</p> <p>0</p>	<p>0</p> <p>0</p>
其他 Others <ol style="list-style-type: none"> 1. 所簽發的《海員培訓、發證和值班標準國際公約》最低安全配員證明書 Standards of Training, Certification and Watchkeeping Minimum Safe Manning Certificate issued 2. 對構造安全、設備安全、無線電安全證明書的監察，包括中期檢驗 Safety Construction, Equipment and Radio Certificates monitored (including intermediate surveys) 3. 對國際載重線證明書的監察，包括定期檢驗 International Load Line Certificate monitored (including periodic surveys) 4. 對國際防止油污證明書、油污損害民事責任保險證明書或其他保證證明書及燃油污染損害民事責任保險證明書或其他經濟擔保證明書的監察 – 續期、年度/中期檢驗 International Oil Pollution Prevention (IOPP) Certificate, Certificate of Insurance or Other Financial Security in Respect of Civil Liability for Oil Pollution Damage and Certificate of Insurance or Other Financial Security in Respect of Civil Liability for Bunker Oil Pollution Damage monitored (including renewal, annual/intermediate surveys) 5. 對新船公司所作的國際安全管理稽核 International Safety Management (ISM) audits of new shipping companies 6. 其他檢驗 (例如合格證明書等) Other surveys (e.g. Certificates of Fitness etc.) 	<p>528</p> <p>3 682</p> <p>599</p> <p>3 135</p> <p>24</p> <p>0</p>	<p>2 205</p> <p>3 754</p> <p>529</p> <p>3 328</p> <p>31</p> <p>0</p>

表 26 – 續
TABLE 26 – Cont'd

B. 客船安全統計數字 Passenger Ships Safety Statistics	2012	2013
乘客定額及船舶安全證明書 Passenger and Ship Safety Certificates		
1. 客船安全證明書 – 國際航線 Passenger Ship Safety Certificate (PSSC) – International Voyage	0	0
2. 客船安全證明書／高速船安全證明書 – 內河航限 PSSC/High Speed Craft Safety Certificate (HSCSC) – River Trade Limits	PSSC-7/ HSCSC-61	PSSC-1/ HSCSC-63
3. 延長客船安全證明書有效期 Extensions to PSSC	7	2
4. 客船安全證明書檢驗船舶總數 Total no. of vessels surveyed for PSSC	68	65
5. 受檢驗的客船無線電裝置 Passenger ship radio installations surveyed	68	65
6. 所簽發的載重線證明書數目 No. of Load Line Certificates issued	14	15
7. 所簽發的載重線豁免證明書數目 No. of Load Line Exemption Certificates issued	14	15
8. 所簽發的國際防止油污證明書及增補數目 No. of IOPP Certificates with Supplement issued	15	16
9. 所簽發的國際防止油污豁免證明書數目 No. of IOPP Exemption Certificates issued	0	4
10. 所簽發的最低安全配員證明書數目 No. of Minimum Safe Manning Certificates issued	5	12
11. 對船公司所作的國際安全管理稽核 ISM audits of shipping companies	6	4
12. 對船舶所作的國際安全管理稽核 ISM audits of ships	21	32
13. 所簽發的國際安全管理稽核符合證明數目 No. of ISM Document of Compliance issued	2	1
14. 所簽發的國際安全管理稽核安全管理證明書數目 No. of ISM Safety Management Certificates issued	13	17
15. 所簽發的臨時國際安全管理稽核安全管理證明書數目 No. of Interim ISM Safety Management Certificates issued	4	1
雜項檢查，圖則審核和設備 Miscellaneous Inspection, Plans Approval and Equipment		
1. 審核客船船體、機械和設備圖則數目 No. of plans examined for hull, machinery and equipment of passenger ships	137	98
2. 簽發檢查證明書、雜項檢驗／檢查數目 No. of certificates of inspection issued, miscellaneous surveys/inspections	104	99

表 26 – 續
TABLE 26 – Cont'd

C. 港口國監督統計數字 Port State Control Statistics	2012	2013
<p>在香港特別行政區港口內進行的港口國監督檢查： Port State Control Inspections in the Harbour of the Hong Kong Special Administrative Region:</p>		
<p>1. 在履行身為港口國監督委員而對《東京諒解備忘錄》應有的責任下，受港口國監督檢查的個別外來船舶數目 No. of individual foreign ships inspected under the obligation to Tokyo Memorandum of Understanding (MOU), as a member Port State of the Committee</p>	869	865
<p>– 遠洋船舶 <i>ocean vessels</i></p>	743	740
<p>– 沿岸船舶 <i>coastal vessels</i></p>	126	125
<p>2. 對外來船舶進行港口國監督檢查 (包括複檢) 總數 Total no. of Port State Control inspections carried out for foreign ships, including re-inspections</p>	927	930
<p>3. 被扣留在港的低於安全標準的船舶數目 No. of sub-standard ships detained in Hong Kong</p>	52	57

資料來源： (A) 海事處貨船安全組
Data Sources: Cargo Ships Safety Section, Marine Department

(B) 海事處客船安全組
Passenger Ships Safety Section, Marine Department

(C) 海事處港口國監督組
Port State Control Section, Marine Department

表 27
TABLE 27

本地船隻安全／海事工業安全／海事意外統計數字
Local Vessels Safety/Marine Industrial Safety/Marine Accidents Statistics

I. 船舶的檢驗和檢查統計 Statistics on Surveys and Inspections of Vessels	2012	2013
A. 給本地船隻簽發／批註的證明書／適合聲明／紀錄等 Certificates/Declarations/Records etc. Issued/Endorsed to Local Vessels <ol style="list-style-type: none"> 1. 簽發／批註乾舷勘定證明書數目 No. of Freeboard Assignment Certificates issued/endorsed 2. 簽發安全設備檢驗紀錄數目 No. of Survey Records of Safety Equipment issued 3. 簽發／批註載重線證明書數目 No. of Load Line Certificates issued/endorsed 4. 簽發噸位丈量記錄數目 No. of Records of Tonnage Measurement issued 5. 簽發／批註散裝有毒液體物質的防污證明書數目 No. of Pollution Prevention Certificates for the Carriage of Noxious Liquid Substances in Bulk issued/endorsed 6. 簽發適合運載危險品聲明數目 No. of Declarations of Fitness for the Carriage of Dangerous Goods issued 7. 簽發香港防止油類污染證明書數目 No. of Hong Kong Oil Pollution Prevention Certificates issued 8. 簽發／批註香港防止空氣污染證明書數目 No. of Hong Kong Air Pollution Prevention Certificates issued/endorsed 9. 給本地船隻簽發驗船證明書數目 No. of Certificates of Survey issued to Local Vessels <ul style="list-style-type: none"> – 第 I 類 Class I – 第 II 類 Class II – 第 III 類 Class III – 第 IV 類 Class IV 		
總計 Total	3 054	3 245
B. 審批圖則／文件 Plans/Documents Examined <ol style="list-style-type: none"> 1. 船隻傾斜測試及穩性確定數目 No. of Vessels Inclining tested and Stability Information assessed 2. 審核本地船隻的船體、機械和設備圖則數目 No. of Plans of Hull, Machinery and Equipment examined for Local Vessels 		
總計 Total	9 975	3 242

表 27 – 續
TABLE 27 – Cont'd

I. 船舶的檢驗和檢查統計 (續) Statistics on Surveys and Inspections of Vessels (Cont'd)	2012	2013
C. 檢驗本地船隻數目 (包括新船、現有船隻、抽查船隻及被扣留的船隻) Local Vessels Inspected (New, Existing, Spot-check Vessels and Detained Vessels) <ol style="list-style-type: none"> 1. 執行其他政府部門要求檢查的船隻數目 No. of Inspections of Vessels for Other Government Departments 2. 完成首次檢驗而新領牌的船隻數目 No. of Newly Licensed Vessels after Completing Initial Survey 3. 在本港檢驗本地船隻的數目 No. of Local Vessels Inspected Locally 		
總計 Total	2 111	2 588
D. 檢驗本地船隻次數 (包括新船、現有船隻、抽查船隻及被扣留的船隻) Inspection Visits Made to Local Vessels (New, Existing, Spot-check Vessels and Detained Vessels) <ol style="list-style-type: none"> 1. 檢驗碰撞後破損的本地船隻次數 No. of Inspection Surveys of Damaged Local Vessels after Collision 2. 抽查及複驗本地船隻次數 No. of Spot Checks and Audit Checks on Local Vessels 3. 海外檢驗本地船隻次數 No. of Overseas Visits for Inspection of Local Vessels 4. 本地船隻在本港首次及定期檢查次數 No. of Initial and Periodical Inspection Visits Made Locally to Local Vessels 		
總計 Total	3 316	3 469
E. 舉辦安全講座及研討會 Talks and Seminars Conducted	3	1

資料來源： 海事處本地船舶安全組
Data Source: Local Vessels Safety Section, Marine Department

表 27 – 續
TABLE 27 – Cont'd

II. 檢查正在進行工程的船舶及調查海上工業意外事故等 Inspections of Vessels Engaged in Works and Investigations of Marine Industrial Accidents etc.	2012	2013
A. 貨櫃檢查數目 No. of Containers Inspected	9 409	8 208
B. 海事工業安全檢查 (不包括貨櫃檢查) Marine Industrial Safety Inspections (not including inspection of containers)		
1. 檢查正在修理的船舶 Inspections of Vessels Undergoing Repair	884	663
2. 檢查海事工程船舶 Inspections of Vessels Engaged in Marine Construction	138	154
3. 檢查遠洋船裝卸貨物工具 Cargo Gear Inspections on Ocean-going Vessels	289	226
4. 檢查遠洋船裝卸貨物 Stevedoring Inspections on Ocean-going Vessels	2 293	1 892
5. 檢查駁船裝卸貨物工具 Cargo Gear Inspections on Lighters	454	409
6. 檢查駁船裝卸貨物 Stevedoring Inspections on Lighters	2 222	1 885
總計 Total	6 280	5 229
C. 海事工業意外的調查及查詢數目 Marine Industrial Accidents Investigated/Inquired		
1. 調查致命的非海事工業意外 Non-marine Industrial Fatal Accidents investigated	1	0
2. 調查致命的海事工業意外 Marine Industrial Fatal Accidents investigated	6	2
3. 調查嚴重意外 Serious Accidents investigated	2	0
4. 調查嚴重意外 (無傷亡) Serious Accidents (No Casualty) investigated	1	0
5. 查詢非嚴重意外 Non-serious Accidents inquired	138	157 #
總計 Total	148	159 #

表 27 – 續
TABLE 27 – Cont'd

II. 檢查正在進行工程的船舶及調查海上工業意外事故等 (續) Inspections of Vessels Engaged in Works and Investigations of Marine Industrial Accidents etc. (Cont'd)	2012	2013
D. 發生海事工業意外的數目 Marine Industrial Accidents Occurred <ol style="list-style-type: none"> 1. 修船意外總數 Total Ship Repair Accidents 2. 裝卸貨物意外總數 Total Cargo Handling Accidents 3. 海事工程意外總數 Total Marine Construction Accidents 		
總計 Total	173	180 #
E. 簽發修船許可證／轉介檢控小組的個案／發出警告信的數目 Letters of Permission to Undertake Repairs Issued/Cases Referred to Prosecutions Unit/Warning Letters Issued <ol style="list-style-type: none"> 1. 簽發修船許可證 Letters of Permission to Undertake Repairs issued 2. 轉介檢控小組的個案 Cases referred to Prosecutions Unit 3. 發出警告信 Warning Letters issued 		
總計 Total	4 066	4 062
F. 海事工業安全的宣傳及教育 Promotion and Education on Marine Industrial Safety <ol style="list-style-type: none"> 1. 發出安全指令 Safety Directions issued 2. 出版或修訂的安全小冊子／單張／海報／貼紙數目 No. of Safety Pamphlets/Leaflets/Posters/Stickers published or revised 3. 出版或修訂的安全指南／工作守則數目 No. of Safety Guides/Codes of Practice published or revised 4. 安全講座及研討會的舉辦數目 No. of Safety Talks and Seminars conducted 5. 到訪船舶推廣安全 Safety Promotion Visits to Vessels 		
總計 Total	1 713	1 365

資料來源： 海事處海事工業安全組
Data Source: Marine Industrial Safety Section, Marine Department

表 27 – 續
TABLE 27 – Cont'd

III. 香港註冊船舶的損失數目 ⁽¹⁾ Loss of Vessels Registered in Hong Kong ⁽¹⁾		
損失船舶數目 Number Lost	2012	2013
		0

註釋： (1) 指因遇險而導致損失的船舶。
Note: Refers to loss of vessels due to casualty or accident.

資料來源： 海事處船舶註冊及商船海員管理處
Data Source: Shipping Registry and Mercantile Marine Office, Marine Department

IV. 2013 年海上意外事故統計 Marine Accidents Statistics in 2013								
意外事故類別 Type of Accident	香港水域範圍以內 ⁽¹⁾ Within Hong Kong Waters ⁽¹⁾				香港水域範圍以外 ⁽²⁾ Outside Hong Kong Waters ⁽²⁾			
	宗數 No. of Cases	死亡人數 Persons Killed	受傷人數 Persons Injured	失蹤人數 Persons Missing	宗數 No. of Cases	死亡人數 Persons Killed	受傷人數 Persons Injured	失蹤人數 Persons Missing
相撞 Collision	153	6	59	0	37	0	2	0
擱淺／觸礁 Grounding/Stranding	25	0	0	0	19	0	1	0
沉沒／入水 Sinking/Foundering	19	0	0	0	1	0	0	0
火警／爆炸 Fire/Explosion	22	1	3	0	7	1	3	0
翻沉／傾斜 Capsized/Listing	11	0	1	0	1	0	0	0
接觸 Contact	39	0	94	0	15	0	0	0
其他 Others	33	0	0	0	23	0	0	0
總計 Total	302	7	157	0	103	1	6	0

註釋： (1) 包括所有船舶 (如香港註冊及外國註冊船舶、本地領牌船隻、內河船隻、沿海船隻、政府船舶等等) 的意外及傷亡數字。

Notes: Including accidents and casualties figures of all vessels (such as Hong Kong registered and foreign registered vessels, local licensed vessels, river trade vessels, coastal vessels, government launches, etc.).

(2) 只包括在香港註冊或領牌的船舶之意外及傷亡數字。
Including accidents and casualties figures of Hong Kong registered vessels or local licensed vessels only.

資料來源： 海事處海事意外調查組
Data Source: Marine Accident Investigation Section, Marine Department

表 27 – 續
TABLE 27 – Cont'd

V. 海上意外事故調查 Marine Accident Investigation	2012	2013
調查意外事故 《船舶及港口管制條例》、 《商船(本地船隻)條例》及 《商船條例》	34	29
初步研訊 《商船條例》	0	0
領港研訊 《領港條例》	0	0
海事法庭	0	0
調查委員會	0	0
對調查委員會裁決提出上訴	0	0

資料來源： 海事處海事意外調查組

Data Source: Marine Accident Investigation Section, Marine Department

表 28
TABLE 28

海員發證、註冊和僱用統計數字
Seafarers' Certification, Registration and Employment Statistics

A. 遠洋合格證明書 Seagoing Certificates of Competency		2012		2013	
		申請人數 Number of Applications	及格人數 Number of Successes	申請人數 Number of Applications	及格人數 Number of Successes
1. 商船船長及 甲板高級船員	Master Mariner and Deck Officer				
一級甲板高級船員 (商船船長)	Deck Officer Class 1 (Master Mariner)				
筆試	Written Examination	1	1	2	1
口試	Oral Examination	5	5	9	8
其他	Other Services	28	28	24	24
二級甲板高級船員	Deck Officer Class 2				
筆試	Written Examination	4	4	9	3
口試	Oral Examination	4	4	6	4
其他	Other Services	17	17	9	9
三級甲板高級船員	Deck Officer Class 3				
筆試	Written Examination	7	5	24	15
口試	Oral Examination	10	6	23	16
訊號	Signal	9	6	28	12
其他	Other Services	14	14	28	28
小計	Sub-total	99	90	162	120
2. 輪機師	Marine Engineer Officer				
一級輪機師	Marine Engineer Officer – Class 1				
筆試	Written Examination	7	2	7	2
口試	Oral Examination	8	4	4	1
其他	Other Services	19	19	16	16
二級輪機師	Marine Engineer Officer – Class 2				
筆試	Written Examination	21	7	10	1
口試	Oral Examination	22	9	8	1
其他	Other Services	13	13	10	10
三級輪機師	Marine Engineer Officer – Class 3				
口試	Oral Examination	24	14	11	6
其他	Other Services	37	36	54	54
小計	Sub-total	151	104	120	91
總計	Total	250	194	282	211

表 28 – 續
TABLE 28 – Cont'd

B. 內河航行合格證明書 River Trade Certificates of Competency		2012		2013	
		申請人數 Number of Applications	及格人數 Number of Successes	申請人數 Number of Applications	及格人數 Number of Successes
1. 甲板高級船員	Deck Officer				
一級甲板高級船員	Deck Officer Class 1				
筆試	Written Examination	1	1	1	1
口試	Oral Examination	12	9	22	13
其他	Other Services	20	20	47	47
二級甲板高級船員	Deck Officer Class 2				
筆試	Written Examination	8	6	16	12
口試	Oral Examination	23	21	30	29
其他	Other Services	7	7	25	25
三級甲板高級船員	Deck Officer Class 3				
筆試	Written Examination	12	9	18	11
口試	Oral Examination	23	14	27	19
訊號	Signal	20	8	27	10
其他	Other Services	21	21	46	46
小計	Sub-total	147	116	259	213
2. 輪機師	Marine Engineer Officer				
一級輪機師	Marine Engineer Officer – Class 1				
筆試	Written Examination	0	0	0	0
口試	Oral Examination	0	0	0	0
其他	Other Services	7	7	12	12
二級輪機師	Marine Engineer Officer – Class 2				
筆試	Written Examination	22	6	20	1
口試	Oral Examination	22	5	23	1
其他	Other Services	13	13	19	19
三級輪機師	Marine Engineer Officer – Class 3				
口試	Oral Examination	9	1	11	4
其他	Other Services	5	5	15	15
小計	Sub-total	78	37	100	52
總計	Total	225	153	359	265

表 28 – 續
TABLE 28 – Cont'd

C.1 本地合格證明書 Local Certificates of Competency		2012		2013	
		申請人數 Number of Applications	及格人數 Number of Successes	申請人數 Number of Applications	及格人數 Number of Successes
1. 船長	Coxswain				
一級船長	Coxswain Grade 1				
筆試	Written Examination	14	9	12	10
其他	Other Services	113	113	113	113
二級船長	Coxswain Grade 2				
筆試	Written Examination	88	15	92	13
口試	Oral Examination	41	20	47	23
其他	Other Services	128	127	175	175
三級船長	Coxswain Grade 3				
筆試	Written Examination	211	67	344	100
口試	Oral Examination	1	0	0	0
其他	Other Services	175	175	271	271
小計	Sub-total	771	526	1 054	705
2. 輪機操作員	Engine Operator				
一級輪機操作員	Engine Operator Grade 1				
其他	Other Services	152	127	149	149
二級輪機操作員	Engine Operator Grade 2				
筆試	Written Examination	59	15	42	8
其他	Other Services	2	2	1	1
三級輪機操作員	Engine Operator Grade 3				
筆試	Written Examination	212	67	203	62
其他	Other Services	116	112	108	108
小計	Sub-total	541	323	503	328
總計	Total	1 312	849	1 557	1 033

表 28 – 續
TABLE 28 – Cont'd

C.2 遊樂船隻操作人合格證明書 Pleasure Vessel Operator Certificate of Competency		2012		2013	
		申請人數 Number of Applications	及格人數 Number of Successes	申請人數 Number of Applications	及格人數 Number of Successes
遊樂船隻 一級操作人	Pleasure Vessel Operator Grade 1				
筆試	Written Examination	118	45	153	30
口試	Oral Examination	167 *	26 *	164	14
其他	Other Services	198	198	236	236
遊樂船隻 二級操作人	Pleasure Vessel Operator Grade 2				
筆試	Written Examination	6 407	3 483	7 485	3 960
口試	Oral Examination	10	0	0	0
其他	Other Services	305	305	415	414
總計	Total	7 205 *	4 057 *	8 453	4 654

D. 部門考試 Departmental Examinations		2012		2013	
		考試人數 Examined	及格人數 Passed	考試人數 Examined	及格人數 Passed
一級本地船長	Coxswain Grade 1	0	0	0	0
二級本地船長	Coxswain Grade 2	136	26	157	84
三級本地船長	Coxswain Grade 3	34	16	47	22
一級輪機操作員	Engine Operator Grade 1	0	0	0	0
二級輪機操作員	Engine Operator Grade 2	25	6	40	22
三級輪機操作員	Engine Operator Grade 3	39	17	64	27
總計	Total	234	65	308	155

表 28 – 續
TABLE 28 – Cont'd

E. 其他考試／評定 Other Examinations/Assessments	2012		2013	
	申請人數 Number of Applications	及格人數 Number of Successes	申請人數 Number of Applications	及格人數 Number of Successes
救生艇筏熟練操作證明書 Proficiency in Survival Craft Certificate	0	0	0	0
高級水手／水手證明書 Able Bodied Seaman/Efficient Deck Hand Certificate	0	0	0	0
船舶保安主任證明書 Certificate of Proficiency of Ship Security Officer	15	15	4	4
類型級別證明書 (考試、重新生效及夜航批准) Type Rating Certificate (Examination, Revalidation and Night Service Approval)	462	461	413	412
香港執照 Hong Kong Licence	18 425	18 425	18 224	18 224
本地豁免 Local Exemption	3	3	87	87
總計 Total	18 905	18 904	18 728	18 727

備註： 其他 – 包括有關證明書批註、豁免、重新生效等事宜的申請。

Remark: Other services – including applications for endorsement, exemption and revalidation etc.

F. 截至 2013 年 12 月 31 日為止的海員註冊人數 Seafarer's Registration as at 31.12.2013			
根據第478章註冊的海員 Seafarers Registered Under Cap.478	第一部 Part I	第二部 Part II	總計 Total
	4 175	1 473	5 648

G. 2013 年所簽發的僱用登記簿數目 Employment Registration Books Issued, 2013	
續發簿 Subsequent Books	0
補發簿 Replacement Books	1
新海員簿 New Entrants Books	136
總計 Total	137

表 28 – 續
TABLE 28 – Cont'd

H. 2013 年海員就業統計數字 Seafarers Employment Statistics, 2013				
期間 Period	僱用海員方式 Seafarers Employed Through			
	核准公司名冊 Permitted Company Roster	總名冊 General Roster	緊急僱用／重新僱用等 Emergency/Re-employment, etc.	總計 Total
2013年第一季 1 st Quarter 2013	51	7	1	59
2013年第二季 2 nd Quarter 2013	60	1	100	161
2013年第三季 3 rd Quarter 2013	52	7	641	700
2013年第四季 4 th Quarter 2013	74	7	3	84
總計 Total	237	22	745	1 004

I. 船公司及職位統計數字 Companies and Posts Statistics	
截至 2013年12月31日為止在商船海員管理處登記僱用本港註冊海員的船公司數目 Shipping companies listed with Mercantile Marine Office to employ Hong Kong registered seafarers as at 31.12.2013	29
2013年按船公司所交周年報表而編製的本港海員就業職位 Posts filled by Hong Kong seafarers as compiled from annual returns submitted by shipping companies, 2013	1 469

J. 2013年訂立和終結的香港註冊船舶船員協議條款 Crew Agreements of Hong Kong Registered Ships Opened and Closed, 2013				
	訂立的協議 Agreements Opened		終結的協議 Agreements Closed	
	在香港境內 In Hong Kong	在香港境外 Outside Hong Kong	在香港境內 In Hong Kong	在香港境外 Outside Hong Kong
船員協議條款數目 No. of agreements	130	2 460	78	1 472
總計 Total	2 590		1 550	

表 28 – 續
TABLE 28 – Cont'd

K. 香港註冊船舶僱用和解職的海員人次 ⁽¹⁾ Number of Employment and Discharge of Seafarers by Hong Kong-registered Ships ⁽¹⁾		
	2012	2013
僱用的海員人次 No. of employment of seafarers	92 280	155 400
解職的海員人次 No. of discharge of seafarers	89 940	93 000

註釋： (1) 數字包括在香港以外地方註冊的海員。

Note: Figures include seafarers registered outside Hong Kong.

資料來源： (A) – (E) 海事處海員發證組

Data Sources: Seafarers' Certification Section, Marine Department

(F) – (K) 海事處註冊及商船海員管理處

Shipping Registry and Mercantile Marine Office, Marine Department

表 29
TABLE 29

香港註冊船舶統計數字
Statistics on Ships Registered in Hong Kong

A. 2013 年船舶數目和噸位
Number of Ships and Tonnage, 2013

	船舶數目 No. of Ships	淨噸位 ⁽¹⁾ Net Tonnage ⁽¹⁾	總噸位 ⁽¹⁾ Gross Tonnage ⁽¹⁾
(i) 2013 年 12 月 31 日船舶註冊概況 On register as at 31.12.2013	2 327	48 682 581	86 434 598
(ii) 2013 年註冊的船舶 Ships Registered in the year of 2013	313	7 432 675	13 196 240
(iii) 2013 年取消註冊的船舶 Ships De-registered in the year of 2013	179	3 113 787	5 619 162

註釋： (1) 淨噸位及總噸位以每單位 100 立方呎計算。
Note: Net and gross tonnages are in units of 100 cubic feet.

B. 按總噸位分析於 2013 年年底在香港註冊的船舶數目
Ships Registered in Hong Kong Analysed by Gross Tonnage, as at end of 2013

總噸位 Gross Tonnage	船舶數目 No. of Ships
< 500	167
500 - 999	56
1 000 - 1 999	41
2 000 - 2 999	15
3 000 - 3 999	20
4 000 - 4 999	34
5 000 - 9 999	261
10 000 - 14 999	76
15 000 - 19 999	180
20 000 - 24 999	179
25 000 - 29 999	219
30 000 - 34 999	194
35 000 - 39 999	134
40 000 - 44 999	212
45 000 - 49 999	34
50 000 - 59 999	108
60 000 - 69 999	48
70 000 - 79 999	13
80 000 - 89 999	67
90 000 - 99 999	127
100 000 - 149 999	58
≥ 150 000	84
總計 Total	2 327

表 29 – 續
TABLE 29 – Cont'd

C. 按船舶種類分析於 2013 年度在香港註冊及取消註冊的船舶數目
Ship Registered and De-registered in Hong Kong by Ship Type, 2013

船舶類型 Type of Ship	註冊船舶 Ship Registered		取消註冊船舶 Ship De-registered	
	船舶數目 No. of Ships	總噸位 Gross Tonnage	船舶數目 No. of Ships	總噸位 Gross Tonnage
散裝貨船 Bulk Carrier	161	6 238 759	97	3 561 109
化學品船 Chemical Tanker	3	43 268	3	23 729
集裝箱船 Container	63	4 090 489	12	427 400
渡輪 Ferry	0	0	0	0
氣體運輸船 Gas Carrier	4	105 426	2	10 652
一般貨船 General Cargo Ship	34	847 519	18	194 389
高速船 High Speed Craft	0	0	2	948
躉船 Lighter and Barge	1	22 027	0	0
油輪 Oil Tanker	33	1 693 325	33	935 030
礦沙／散貨／ 油類混用船 Ore/Bulk/Oil (OBO) Carrier	1	151 825	3	429 873
其他油輪 Other Tanker	0	0	1	28 553
滾裝卸式船 Roll On/Roll Off	0	0	0	0
拖船 Tug	5	1 732	6	7 423
遊艇 Yacht	8	1 870	2	57
總計 Total	313	13 196 240	179	5 619 162

資料來源： 海事處船舶註冊處
Data Source: Shipping Registry, Marine Department

表 30
TABLE 30

政府船隊統計數字
Government Fleet Statistics

項目	Item	2012	2013
1. 開支預算總額 ⁽¹⁾ (百萬元)	Total expenditure estimate ⁽¹⁾ (\$M)	410.0	432.2
2. 截至 12 月 31 日的政府船隊科員工總數 (包括船員)	Total number of Government Fleet Division (GFD) staff (including crew) as at 31 December	503	490
3. (i) 建成及交收的政府新船 (ii) 建造中的政府新船 (iii) 已完成的政府新船計劃 (iv) 正進行中的政府新船計劃	(i) Government new vessels built and delivered (ii) Government new vessels under construction (iii) Government new vessel projects completed (iv) Government new vessel projects in progress	31 17 9 9	34 41 9 10
4. 新船招標／報價	Tenders/Quotations called for new vessels	14	15
5. 新船合約	Contracts awarded for new vessels	9	14
6. 已完成的合約及購買規格書	Contracts and procurement specifications completed	23	29
7. (i) 政府船舶總數 a. 大型機動船舶 b. 大型高速船 c. 其他雜類型船舶 (ii) 配備海事處人員的政府船舶 (iii) 海事處可供調配船員的時數率(%) (iv) 已處理報廢的政府船舶	(i) Total number of vessels a. Major mechanised vessels b. High speed craft (large type) c. Other miscellaneous class vessels (ii) Government craft manned by the Marine Department (MD) (iii) MD crew staff time available for deployment (%) (iv) Government craft disposed	807 95 13 699 43 87.8 23	819 95 13 711 43 85.5 7
8. (i) 大型機動船舶及大型高速船的可提供使用率 (ii) 大型機動船舶及大型高速船的平均數目 (iii) 船舶維修後首次試航成功率 (iv) 政府船隊維修保養服務使用者滿意率(%)	(i) Availability of major mechanised vessels and high speed craft (large type) (%) (ii) Average number of major mechanised vessels and high speed craft (large type) (iii) Vessel seatrial successful rate in first attempt after repair maintenance service (%) (iv) User satisfaction level on Government fleet repair maintenance service (%)	88.2 108 93.8 99.1	87.4 108 97.7 99.3
9. 大型機動船舶及大型高速船 (包括他們的機動子艇) 保養費總額 (百萬元)	Total maintenance cost of major mechanised vessels and high speed craft (large type) (including their mechanised daughter boats) (\$M)	157.2	162.5
10. 大型機動船舶及大型高速船 (包括他們的機動子艇) 平均保養費 (百萬元)	Average maintenance cost of major mechanised vessels and high speed craft (large type) (including their mechanised daughter boats) (\$M)	1.5	1.5
11. (i) 船舶維修定期保養合約安排總數 a. 根據合約保養的船舶數目 b. 根據合約保養的主機數目 (ii) 採購機械零件的定期合約數目	(i) Total number of vessel maintenance term contract (TC) arrangements a. Number of vessels maintained under TC b. Number of main engines repaired under TC (ii) Number of TC for procurement of machinery spare parts	46 111 256 16	44 112 257 16
12. 配備海事處人員的政府船舶肇事個案 (i) 肇事政府船舶數目 (ii) 工傷意外傷亡數目 a. 船塢員工 b. 船員	Accidents involving Government craft manned by MD (i) Number of Government vessels involved (ii) Number of casualties in industrial accidents a. Dockyard staff b. Crew	10 7 10	10 1 9
13. 參加職業安全及健康 (職安健) 課程的政府船塢人員人數 (i) 職業安全健康局舉辦課程 (ii) 政府船隊科工業安全組舉辦的課程 (iii) 其他職安健課程	Number of attendees of Government Dockyard to Occupational Safety and Health (OSH) training courses (i) Organised by the OSH Council (ii) Organised by the Industrial Safety Section, GFD (iii) Other OSH courses	28 184 51	31 156 100

註釋： (1) 指財政年度內的數字 (由當年四月一日至下年三月三十一日)。
Note: Refer to financial year figures (i.e. from 1 April of current year to 31 March of next year).

資料來源： 海事處政府船隊科
Data Source: Government Fleet Division, Marine Department

表 31
TABLE 31

政府船舶所屬部門及可用率情況 (截至 2013 年年底)
Departmental Ownership and Availabilities of Government Vessels (as at year end 2013)

船舶類型 Vessel Type	所屬部門 Ownership														
	漁農自然護理署 AFCD	醫療輔助隊 AMS	民眾安全服務隊 CAS	土木工程拓展署 CEDD	懲教署 CSD	香港海關 C&ED	環境保護署 EPD	消防處 FSD	衛生署 DH	香港警務處 HKPF	入境事務處 Imm D	康樂及文化事務署 LCSD	海事處 MD	水務署 WSD	總計 Total
機動子艇及泳灘艇 Mechanised Daughter Boats & Beach Craft	0	0	0	0	0	7	0	9	0	21	0	128	2	0	167
浮橋物／泳灘浮台及浮筏 Floating Bridge Structures/Beach Platforms & Rafts	0	0	0	0	0	0	0	0	0	0	0	382	0	0	382
機動及非機動充氣式橡皮艇 Mechanised and Non-mechanised Inflatable Boats	3	1	11	0	0	2	1	11	0	7	0	0	0	2	38
駁船 Lighters	0	0	0	0	0	0	0	1	0	6	0	0	21	0	28
小型機動船及小艇 Minor Mechanised Vessels & Dinghies	12	0	0	0	0	0	0	8	0	10	0	0	6	5	41
大型機動船舶 Major Mechanised Vessels	3	0	0	3	2	7	1	9	1	36	7	0	26	0	95
大型高速船 High Speed Craft (large type)	0	0	0	0	0	3	0	0	0	10	0	0	0	0	13
中型高速船 High Speed Craft (medium type)	8	0	0	0	0	2	0	2	0	38	0	0	5	0	55
總計 Total	26	1	11	3	2	21	2	40	1	128	7	510	60	7	819
大型機動船及大型高速船平均可提供使用率 Average Availability of Major Mechanised Vessels & High Speed Craft (large type) (%)	90.0	-	-	89.1	88.5	88.5	84.8	89.2	83.8	87.0	85.8	-	86.9	-	87.4

資料來源： 海事處政府船隊科

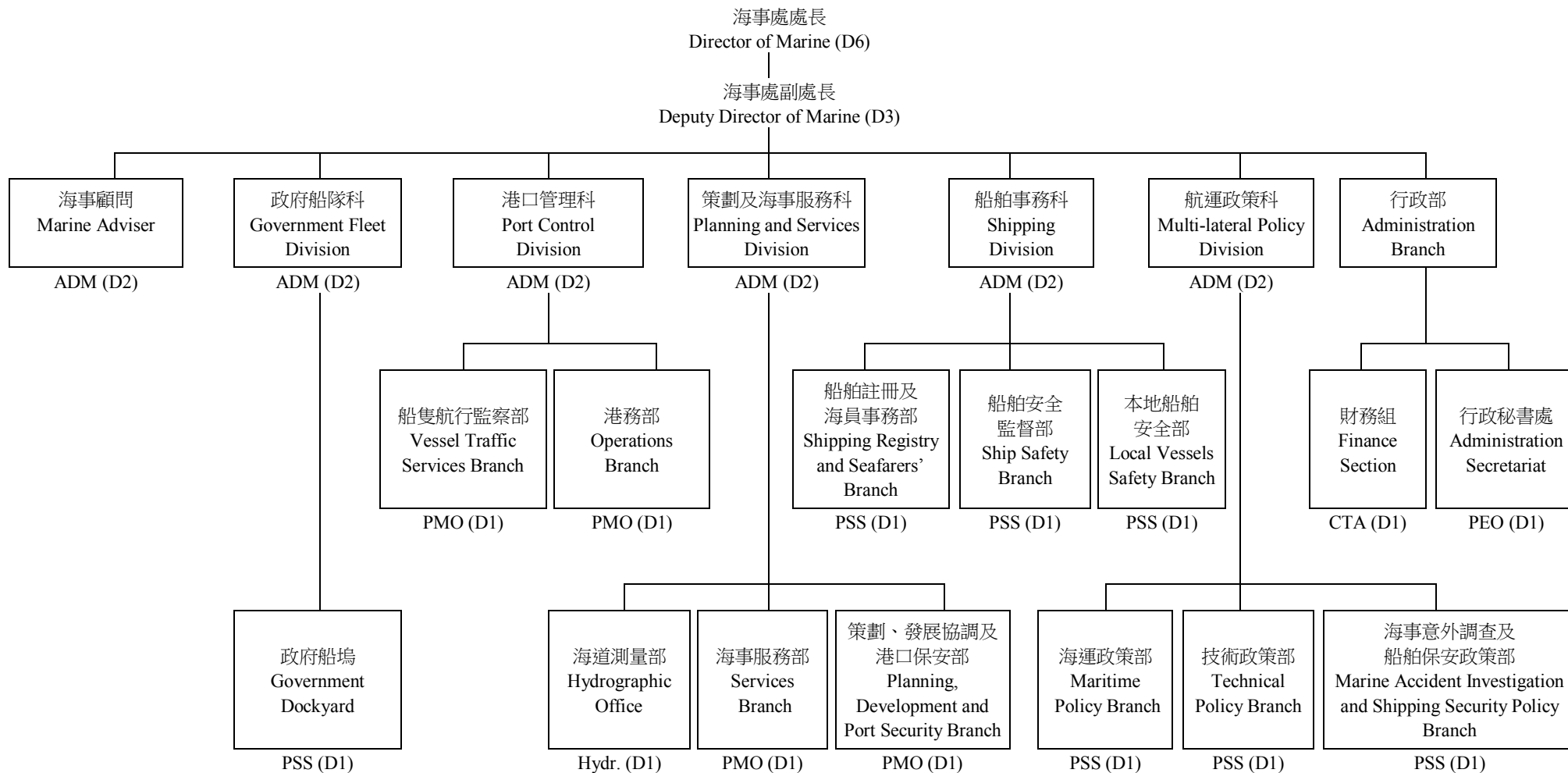
Data Source: Government Fleet Division, Marine Department

附錄

Appendices

附錄 A
APPENDIX A

海事處組織架構圖 (截至 2013 年年底)
Marine Department Organisation Chart (as at year end 2013)



- 圖例：
Legend:
- | | | | | | |
|-------|-----------|------------------------------|-----|------------------|---------------------------------|
| ADM | = 海事處助理處長 | Assistant Director of Marine | PEO | = 首席行政主任 | Principal Executive Officer |
| PMO | = 首席海事主任 | Principal Marine Officer | CTA | = 總庫務會計師 | Chief Treasury Accountant |
| PSS | = 首席驗船主任 | Principal Surveyor of Ships | D6 | = 首長薪級第六點 (如此類推) | Directorate Level 6 (and so on) |
| Hydr. | = 海道測量師 | Hydrographer | | | |

附錄 B
APPENDIX B

海事處的編制和實際員額 (截至 2013 年年底)
Marine Department Establishment and Strength (as at year end 2013)

首長級人員 Directorate Officers		編制 Establishment	實際員額 Strength
海事處處長	Director of Marine (D6)	1	1
海事處副處長	Deputy Director of Marine (D3)	1	1
海事處助理處長	Assistant Director of Marine (D2)	6 + 1 [♦]	6
首席海事主任	Principal Marine Officer (D1)	4	4
首席驗船主任	Principal Surveyor of Ships (D1)	7 + 1 [♦]	7
首席行政主任	Principal Executive Officer (D1)	1	0
總庫務會計師	Chief Treasury Accountant (D1)	1	1
海道測量師	Hydrographer (D1)	1	1
部門職系 Departmental Grade			
高級海事主任	Senior Marine Officer	19	19
海事主任	Marine Officer	39	32
海事監督	Marine Controller	13	13
助理海事監督	Assistant Marine Controller	42	35
高級船舶安全主任	Senior Shipping Safety Officer	1	1
船舶安全主任	Shipping Safety Officer	6 + 1 [♦]	7
高級驗船主任	Senior Surveyor of Ships	16 + 1 [♦]	16
驗船主任	Surveyor of Ships	31	26
高級助理船務主任	Senior Assistant Shipping Master	28 + 1 [♦]	28
助理船務主任	Assistant Shipping Master	1	0
一級海事督察	Marine Inspector I	95 + 4 [♦]	94
二級海事督察	Marine Inspector II	104	93
輔航設備監督	Superintendent of Aids to Navigation	1	1
助理輔航設備監督	Assistant Superintendent of Aids to Navigation	2	1
總驗船督察	Chief Ship Inspector	2	2
高級驗船督察	Senior Ship Inspector	11	11
驗船督察	Ship Inspector	21	18
助理驗船督察	Assistant Ship Inspector	8	10
小輪大偈	Launch Mechanic	1	1

附錄 B - 續
APPENDIX B - Cont'd

一般職系 General Grade		編制 Establishment	實際員額 Strength
高級統計師	Senior Statistician	1	1
一級統計主任	Statistical Officer I	1	1
二級統計主任/ 見習統計主任	Statistical Officer II/ Student Statistical Officer	3	3
系統經理	Systems Manager	2	2
一級系統分析/ 程序編製主任	Analyst/Programmer I	6	5
二級系統分析/ 程序編製主任	Analyst/Programmer II	6	5
高級庫務會計師	Senior Treasury Accountant	1	1
庫務會計師	Treasury Accountant	3	3
高級會計主任	Senior Accounting Officer	1	0
一級會計主任	Accounting Officer I	1	2
二級會計主任	Accounting Officer II	3	3
總行政主任	Chief Executive Officer	1	2
高級行政主任	Senior Executive Officer	2	1
一級行政主任	Executive Officer I	7	6
二級行政主任	Executive Officer II	7	9
高級法定語文主任	Senior Official Languages Officer	1	1
一級法定語文主任	Official Languages Officer I	2	1
二級法定語文主任	Official Languages Officer II	2	3
高級電子工程師	Senior Electronics Engineer	1	1
電子工程師/ 助理電子工程師	Electronics Engineer/ Assistant Electronics Engineer	2	2
土地測量師/ 助理土地測量師	Land Surveyor/ Assistant Land Surveyor	2	2
電子督察	Electronics Inspector	1	1
助理空氣調節督察	Assistant Air-Conditioning Inspector	1	1
首席測量主任 (工程)	Principal Survey Officer (Engineering)	1	1
高級測量主任 (工程)	Senior Survey Officer (Engineering)	4	4
測量主任 (工程)/ 見習測量主任 (工程)	Survey Officer (Engineering)/ Survey Officer Trainee (Engineering)	11	11

附錄 B - 續
APPENDIX B - Cont'd

一般職系 General Grade		編制 Establishment	實際員額 Strength
首席技術主任 (製圖)	Principal Technical Officer (Cartographic)	1 + 1 [♦]	2
高級技術主任 (製圖)	Senior Technical Officer (Cartographic)	3	4
技術主任 (製圖) / 見習技術主任 (製圖)	Technical Officer (Cartographic) / Technical Officer Trainee (Cartographic)	5	4
高級文書主任	Senior Clerical Officer	6 + 1 [♦]	5
文書主任	Clerical Officer	30	30
助理文書主任	Assistant Clerical Officer	73 + 1 [♦]	75
文書助理	Clerical Assistant	117	117
辦公室助理員	Office Assistant	8	6
高級物料供應主任	Senior Supplies Officer	1	1
物料供應主任	Supplies Officer	1	1
助理物料供應主任	Assistant Supplies Officer	1	1
高級物料供應員	Senior Supplies Supervisor	1	1
一級物料供應員	Supplies Supervisor I	2	2
二級物料供應員	Supplies Supervisor II	11 + 1 [♦]	12
助理物料供應員	Supplies Assistant	3	3
物料供應服務員	Supplies Attendant	2	2
高級私人秘書	Senior Personal Secretary	1	1
一級私人秘書	Personal Secretary I	6	6
二級私人秘書	Personal Secretary II	18	15
機密檔案室助理	Confidential Assistant	1	1
繕校員	Calligraphist	2	2
打字員	Typist	4	4
汽車司機	Motor Driver	4	4

附錄 B - 續
APPENDIX B - Cont'd

共通職系 Common Grade		編制 Establishment	實際員額 Strength
總技術主任	Chief Technical Officer	2	2
高級電氣督察	Senior Electrical Inspector	2	2
電氣督察	Electrical Inspector	4	3
助理電氣督察	Assistant Electrical Inspector	2	2
高級機械督察	Senior Mechanical Inspector	7	7
機械督察	Mechanical Inspector	10	10
助理機械督察	Assistant Mechanical Inspector	5	4
一級監工	Works Supervisor I	12 + 3 [♦]	13
二級監工	Works Supervisor II	8	5
小輪船員督導員	Launch Crew Supervisor	3	3
高級小輪船長	Senior Launch Master	59 + 2 [♦]	42
小輪船長	Launch Master	46 + 1 [♦]	54
小輪助理員	Launch Assistant	214 + 2 [♦]	186
高級技工	Senior Artisan	38 + 1 [♦]	35
技工	Artisan	77	47
丈量員	Chainman	4	4
產業看管員	Property Attendant	2	1
二級工人	Workman II	33 + 1 [♦]	26
總計	Total	1 365 + 23[♦]	1 246

♦ 編外職位
Supernumerary post

附錄 C
APPENDIX C

2013 年海事處訓練組舉辦的課程
Training Courses Conducted by Training Section, Marine Department in 2013

課程名稱 Course Title	學期 Duration	參加學員* Target Participants*	班級數目 Number of Classes	學員數目 Number of Participants
1. 香港水域自動雷達標繪儀和高速船雷達課程 Automatic Radar Plotting Aid (ARPA) and High Speed Craft Radar Course for Hong Kong Waters	3 days	C&E	1	6
2. 基本小型船舶操縱技術課程 Basic Boat Handling Skills Course	4 days	SLM, LM, C&E, FSD	2	12
3. 民安隊海上油污訓練課程 CAS Oil Pollution Course	2 days	CAS	2	34
4. 全球海上遇險及安全系統 – 限用操作員證書課程 Global Maritime Distress and Safety System (GMDSS) – Restricted Operator's Certificate Course	5 days	MI II, AMC	2	12
5. 基本船舶操縱課程 Introduction of Ship Handling Course	2 days	MO	1	4
6. 康樂及文化事務署海上油污訓練課程 LCSD Oil Pollution Course	1 day	LCSD	1	21
7. 海事督察訓練課程 – 甲部 Marine Inspector Training Course – Part A	30 days	MI II	1	12
8. 海事督察訓練課程 – 乙部 Marine Inspector Training Course – Part B	50 days	MI II	1	10
9. 領港員模擬船操縱課程 Pilotage Simulation Course	1 day	HKPA	1	1
10. 香港水域雷達操作員課程 Radar Operator Course for Hong Kong Waters	7 days	LA, LM, C&E, FSD, Marpol	8	66
11. 船舶交通服務在職培訓(導師)課程 Vessel Traffic Services (VTS) On-the-Job Training (Instructor) Course	5 days	AMC, MO	1	5
12. 船舶交通服務在職培訓(操作員)課程 VTS On-the-Job Training (Operator) Course	30 days	AMC, MO	1	4
13. 船舶交通服務操作員增潤課程 VTS Operator Refreshment Course	0.5 day	MC, AMC	1	9
14. 船舶交通服務操作員培訓課程(助理海事監督) VTS Operator Training Course (For AMC)	93 days	AMC	1	4
15. 船舶交通服務操作員培訓課程(海事主任) VTS Operator Training Course (For MO)	70 days	MO	1	1
16. 船舶交通服務重新生效課程 VTS Revalidation Course	2 days	MC, AMC	1	2
17. 船舶交通服務監督員培訓課程 VTS Supervisor Training Course	2 days	AMC	1	4
總計 Total			27	207

附錄 C – 續
APPENDIX C – Cont'd

註釋：* 參加海事處在二零一三年舉辦的訓練課程的機構及職位：

Note: List of organisations/posts participated in the training courses conducted by the Marine Department in 2013:

機構	Organisation	縮寫 Abbreviation
民眾安全服務隊	Civil Aid Service	CAS
香港海關	Customs and Excise Department	C&E
消防處	Fire Services Department	FSD
香港領港會	Hong Kong Pilots Association	HKPA
康樂及文化事務署	Leisure and Cultural Services Department	LCSD
香港水警	Marine Police	Marpol

職位	Post	縮寫 Abbreviation
助理海事監督	Assistant Marine Controller	AMC
小輪助理員	Launch Assistant	LA
小輪船長	Launch Master	LM
海事監督	Marine Controller	MC
二級海事督察	Marine Inspector II	MI II
海事主任	Marine Officer	MO
高級小輪船長	Senior Launch Master	SLM

附錄 D
APPENDIX D

2013 年海事處訪客
Visitors of the Marine Department, 2013

海事處於二零一三年接待了以下訪客：

During the year of 2013, the Marine Department hosted the following visitors:

編號 No.	訪問日期 Date of Visit	機構／代表 Organisation/Representative
1.	24.1.2013	美國領事館及美國海岸防衛隊 US Consulate General of HK and US Coast Guard
2.	5.2.2013	日本海上保安廳 Japan Coast Guard
3.	25.2.2013	日本駐京防衛專員 Japan defense attaché in Beijing
4.	11.3.2013 – 22.3.2013	韓國國土運輸及海洋事務部 (東京諒解備忘錄港口國監督檢查員交流計劃) Ministry of Land, Transport and Maritime Affairs, Republic of Korea (Tokyo MOU PSCO Exchange Programme)
5.	13.3.2013	俄羅斯海港聯邦海事機構 Federal State Unitary Enterprise Rosmorport
6.	15.3.2013	英國海道測量部 U.K. Hydrographic Office
7.	19.04.2013	香港領港會有限公司 (學徒領港見習計劃) Hong Kong Pilots Association Ltd (Attachment Programme for Apprentice Pilot)
8.	22.4.2013	深圳海事局 (海邦達 199 和旺達 6 相撞意外調查工作會議) Shenzhen Maritime Safety Administration (Meeting for the investigation of the collision accident between "Hai Bang Da 199" and "Wang Da 6")
9.	23.4.2013	中國船級社 (榮海輪意外調查工作會議) China Classification Society (Meeting for the investigation of the accident on board vessel "CSC Rong Hai")
10.	23.4.2013	新加坡民防部隊 Singapore Civil Defense Force
11.	23.4.2013	香港大學專業進修學院學生 Students of HKU SPACE
12.	24.4.2013	香港領港會有限公司 (學徒領港見習計劃) Hong Kong Pilots Association Ltd (Attachment Programme for Apprentice Pilot)
13.	24.4.2013	解放軍駐香港部隊 People's Liberation Army Hong Kong Garrison
14.	3.5.2013	中國海事局 China Maritime Safety Administration
15.	9.5.2013 – 10.5.2013	深圳海事局 (進行海邦達 199 和旺達 6 相撞意外調查) Shenzhen Maritime Safety Administration (Carrying out the investigation of the collision accident between "Hai Bang Da 199" and "Wang Da 6")
16.	13.5.2013	上海交通運輸和港口管理局 Shanghai Municipal Transport and Port Authority

附錄 D – 續
APPENDIX D - Cont'd

編號 No.	訪問日期 Date of Visit	機構／代表 Organisation/Representative
17.	29.5.2013	本地船隻諮詢委員會 Local Vessels Advisory Committee
18.	6.6.2013	本地船隻諮詢委員會轄下各小組委員會 Local Vessels Advisory Sub-Committees
19.	8.7.2013	海事訓練學院 Marine Services Training Institute
20.	10.7.2013	南韓國立慶尚大學 Gyeongsang National University, South Korea
21.	16.7.2013	希臘海岸防衛隊 Hellenic Coast Guard
22.	3.9.2013	土耳其地中海黑海發展處 Middle Black Sea Development Agency
23.	4.9.2013	美國領事館及美國海岸防衛隊 US Consulate General of HK and US Coast Guard
24.	11.9.2013	世界海事大學副校長 Vice President of the World Maritime University
25.	18.9.2013	鹿特丹港務局 Port of Rotterdam Authority
26.	24.9.2013	馬來西亞海事局 Malaysia Marine Department
27.	24.9.2013	水警訓練學校 Marine Police Training School
28.	25.9.2013	香港大學專業進修學院學生 Students of HKU SPACE
29.	26.9.2013	香港總商會 Hong Kong General Chamber of Commerce
30.	7.10.2013	斯洛文尼亞外交部部長 State Secretary, Ministry of Foreign Affairs of the Republic of Slovenia
31.	18.10.2013	漁農自然護理署 Agriculture, Fisheries and Conservation Department
32.	30.10.2013	西英倫保險服務(盧森堡)有限公司 West of England Insurance Services (Luxemburg) S.A.
33.	1.11.2013	西英倫船東責任保險互助協會 Protection & Indemnity Club - West of England
34.	5.11.2013 - 11.11.2013	廣東海事局 (港口國監督檢查員交流計劃) Guangdong Maritime Safety Administration (PSCO Exchange Programme)
35.	18.11.2013	中國交通運輸部部長 Minister of the Ministry of Transport, People's Republic of China

附錄 D – 續
APPENDIX D - Cont'd

編號 No.	訪問日期 Date of Visit	機構／代表 Organisation/Representative
36.	18.11.2013 - 29.11.2013	智利海軍 - 海洋國土及商船總局 (東京諒解備忘錄港口國監督檢查員交流計劃) General Directorate of the Maritime Territory and Merchant Marine - Chilean Navy, Chile (Tokyo MOU PSCO Exchange Programme)
37.	25.11.2013	摩納哥 V. Ships 公司主席 President of V. Ships (Monaco) Ltd.
38.	29.11.2013	巴拿馬運河管理局 Panama Canal Authority
39.	29.11.2013	台中港船舶交通服務 Port of Taichung Vessel Traffic Services
40.	2.12.2013 - 6.12.2013	深圳海事局 (港口國監督檢查員交流計劃) Shenzhen Maritime Safety Administration (PSCO Exchange Programme)
41.	9.12.2013	香港水警 Marine Police
42.	13.12.2013	香港領港會有限公司 (學徒領港見習計劃) Hong Kong Pilots Association Ltd (Attachment Programme for Apprentice Pilot)

附錄 E
APPENDIX E

2013 年新訂海事法例
New Maritime Legislations, 2013

二零一三年一月一日至二零一三年十二月三十一日期間通過的海事及航運法例列載如下：
The following maritime and shipping legislations were enacted during the year under review
(1.1.2013 – 31.12.2013):

法例名稱 Title	參考編號 Reference No.
2013 年領港(修訂) 條例 Pilotage (Amendment) Ordinance 2013	Ord. No. 2 of 2013
2013 年領港(修訂) 規例 Pilotage (Amendment) Regulation 2013	L.N. 142 of 2013
2013 年商船 (海員) (修訂) 條例 - 2013 年第 16 號條例 Merchant Shipping (Seafarers) (Amendment) Ordinance, No. 16 of 2013	第 17 卷第 46 期 – 第一號法律副刊 No. 46 Vol. 17 – Legal Supplement No. 1

附錄 F
APPENDIX F

2013 年輔航設備
Aids to Navigation, 2013

A. 使用中的輔航設備
Aids to Navigation in Use

輔航設備	Aids to Navigation	截至 2013 年 12 月 31 日 as at 31.12.2013
1. 燈浮標	Light Buoy	120
2. 燈航標	Light Beacon	422
3. 雷達應答標	Racon	1
4. 霧角	Fog Horn	7

B. 本年新設的輔航裝置
New Aids Established during the Year

1. 啓德 1 KT 1	<p>於 2013 年 3 月 12 日，啓德郵輪碼頭對開一個疏浚區的東北端、西北端和西南端設置三個特別標誌燈浮標，以作標識。</p> <p>Three special mark light buoys were established to mark the northeasterly, northwesterly and southwesterly extremities of a dredged area off the Kai Tak Cruise Terminal on 12.3.2013.</p>
2. 啓德 2 KT 2	
3. 啓德 3 KT 3	

C. 本年拆除的輔航裝置
Aids Discontinued during the Year

沒有	Nil
----	-----

附錄 F – 續
APPENDIX F – Cont'd

D. 本年遭損毀的輔航裝置
Aids Damaged during the Year

下列燈浮標及燈航標遭損毀，航標燈熄滅。

The light buoys and light beacons listed below were damaged and unlit.

月份	Month	名稱	Name
1 月	January	南丫電力 1	P 1
		海上救援西局 3	Sea Rescue West Station 3
		沙龍 E	SLMP E
2 月	February	螺洲	Chesterman
		繫泊浮泡 A17	Mooring Buoy A17
		青衣西	Tsing Yi West
4 月	April	南鯉魚門	South Lei Yue Mun
		藍塘 1	TCS1
5 月	May	小磨刀 西北	Siu Mo To NW
		黃茅洲	Wong Mau Chau
8 月	August	奇力北	Kellett North
		青衣西	Tsing Yi West
9 月	September	屯門入境	IMM TM
10 月	October	繫泊浮泡 A39	Mooring Buoy A39
11 月	November	長洲	Cheung Chau
		大澳 4	Tai O 4
12 月	December	南丫電力 1	P 1

附錄 F – 續
APPENDIX F – Cont'd

E. 本年改進的輔航裝置
Aids Reprovisioned during the Year

1. 下列燈航標已換上全新現代化器材，用以提高光達距離。
The light beacons listed below were upgraded with modern equipment for better luminous range.

月份	Month	名稱	Name
1 月	January	鯉魚門	Lei Yue Mun
		黃泥排	Wong Nei Pai
3 月	March	香港仔南 1	Aberdeen South 1
		香港仔南 2	Aberdeen South 2
		北角	Pak Kok
		大浪灣碼頭	Tai Long Wan Pier
4 月	April	長洲 A	Cheung Chau A
		長洲 B	Cheung Chau B
		長洲 C	Cheung Chau C
		長洲 D	Cheung Chau D
		深港西部通道 東北綠	Hong Kong-Shenzhen Western Corridor NE Green
		深港西部通道 東北紅	Hong Kong-Shenzhen Western Corridor NE Red
		深港西部通道 東北白	Hong Kong-Shenzhen Western Corridor NE White
		深港西部通道 西南綠	Hong Kong-Shenzhen Western Corridor SW Green
		深港西部通道 西南紅	Hong Kong-Shenzhen Western Corridor SW Red
深港西部通道 西南白	Hong Kong-Shenzhen Western Corridor SW White		
6 月	June	模達灣新碼頭	Mo Tat Wan New Pier
7 月	July	喜靈洲碼頭	Hei Ling Chau Pier
9 月	September	佛堂洲	Fat Tong Chau
11 月	November	長洲海傍北	Cheung Chau Praya N
		長洲海傍南	Cheung Chau Praya S
		筲箕灣 A	Shau Kei Wan A
		蛋家灣碼頭	Tan Ka Wan Pier
		塔門新碼頭	Tap Mun New Pier
12 月	December	小蠔灣	Siu Ho Wan

附錄 F – 續
APPENDIX F – Cont'd

E. 本年改進的輔航裝置(續)
Aids Reprovisioned during the Year (Cont'd)

2. 下下列燈航標已由全新現代化器材取代，用以提高其可靠性。
The light beacons listed below were replaced with modern equipment for higher reliability.

月份	Month	名稱	Name
1 月	January	龍鼓洲	Lung Kwu Chau
		麻南笏碼頭	Ma Lam Wat Pier
		白石角碼頭南	Pak Shek Kok Pier S
2 月	February	銅鑼灣 4	Causeway Bay 4
3 月	March	廈門灣碼頭	Hap Mun Wan Pier
		萬角咀碼頭	Man Kok Tsui Pier
		西貢公眾碼頭東北	Sai Kung Public Pier NE
		三門仔碼頭	Sam Mun Tsai Pier
4 月	April	葵青橋西石	Kwai Tsing Bridge West Rock
		船灣 2	Shuen Wan 2
5 月	May	三桠村碼頭	Sam A Tsuen Pier
6 月	June	杉排	Cham Pai
		白石角碼頭北	Pak Shek Kok Pier N
7 月	July	柴灣 C	Chai Wan C
8 月	August	企嶺下海碼頭	Kei Ling Ha Hoi Pier
		深涌碼頭	Sham Chung Pier
		大澳	Tai O
		將軍澳 4	Tseung Kwan O 4
9 月	September	大廟灣碼頭	Joss House Bay Pier
10 月	October	赤徑碼頭	Chek Keng Pier
		長洲碼頭	Cheung Chau Pier
		東心淇碼頭	Tung Sam Kei Pier
11 月	November	長洲 6	Cheung Chau 6
		蒲苔	Po Toi
		土瓜灣 1	To Kwa Wan 1
		土瓜灣 2	To Kwa Wan 2
12 月	December	小蠔灣	Siu Ho Wan

附錄 F – 續
APPENDIX F – Cont'd

E. 本年改進的輔航裝置 (續)
Aids Reprovisioned during the Year (Cont'd)

3. 下列燈航標已更換太陽能電池，用以提高航標的可靠性。
The solar batteries of the light beacons listed below were renewed in order to increase reliability.

月份	Month	名稱	Name
1 月	January	青洲	Green Island
		麻南笏碼頭	Ma Lam Wat Pier
		白石角碼頭南	Pak Shek Kok Pier S
		小蠔灣	Siu Ho Wan
2 月	February	佛堂洲	Fat Tong Chau
3 月	March	香港仔南 1	Aberdeen South 1
		香港仔南 2	Aberdeen South 2
		北長洲石	Adamasta Rock
		鋼線灣	Kong Sin Wan
		蒲苔	Po Toi
		三門仔碼頭	Sam Mun Tsai Pier
		燈籠洲	Tang Lung Chau
4 月	April	長洲 A	Cheung Chau A
		長洲 B	Cheung Chau B
		長洲 C	Cheung Chau C
		長洲 D	Cheung Chau D
		企人石	Kei Yan Shek
		燈洲	Tang Chau
		燈籠洲	Tang Lung Chau
5 月	May	長青橋南白	Cheung Tsing Bridge South White
		南沙甫	Nam Shan Po
		燈籠洲	Tang Lung Chau
		塔門碼頭	Tap Mun Pier
		汀九橋墩 4	Ting Kau Bridge Pier 4
6 月	June	灣仔貨運站 1	Wan Chai PCWA 1
7 月	July	柴灣 C	Chai Wan C
		扯幌排	Che Lei Pai
		下棚(交通燈)	Ha Pang (Traffic Light)
		喜靈洲碼頭	Hei Ling Chau Pier
		北鯉魚門	North Lei Yue Mun
		海上救援東局 1	Sea Rescue East Station 1

附錄 F – 續
APPENDIX F – Cont'd

E. 本年改進的輔航裝置 (續)

Aids Reprovisioned during the Year (Cont'd)

3. 下列燈航標已更換太陽能電池，用以提高航標的可靠性。(續)

The solar batteries of the light beacons listed below were renewed in order to increase reliability.
(Cont'd)

月份	Month	名稱	Name
8 月	August	飯甌洲	Fan Tsang Chau
		企嶺下海碼頭	Kei Ling Ha Hoi Pier
		北果洲	North Ninepin
		深涌碼頭	Sham Chung Pier
		大利橋北 3	Tai Lei Bridge North 3
		大利橋北 6	Tai Lei Bridge North 6
		汀九橋墩 4	Ting Kau Bridge Pier 4
		將軍澳 4	Tseung Kwan O 4
		青馬橋墩 1	Tsing Ma Bridge Pier 1
9 月	September	索罟灣新碼頭	Sok Kwu Wan New Pier
		索罟灣碼頭	Sok Kwu Wan Pier
10 月	October	蝴蝶灣	Butterfly Beach
		赤徑碼頭	Chek Keng Pier
		長洲 3	Cheung Chau 3
		東心淇碼頭	Tung Sam Kei Pier
11 月	November	長洲 6	Cheung Chau 6
		北鯉魚門	North Lei Yue Mun
		蛋家灣碼頭	Tan Ka Wan Pier
		塔門新碼頭	Tap Mun New Pier
		汀九橋墩 1	Ting Kau Bridge Pier 1
		土瓜灣 2	To Kwa Wan 2
12 月	December	青馬橋墩 3	Tsing Ma Bridge Pier 3
		鴨洲碼頭	Ap Chau Pier

4. 下列燈航標的太陽能發電板數目已增加，用以提高航標的可靠性。

The number of solar panel of the light beacon listed below was increased to enhance reliability.

月份	Month	名稱	Name
5 月	May	西馬灣	West Ma Wan

附錄 F – 續
APPENDIX F – Cont'd

F. 輔航燈與輔航設備工場員工比例
Ratio of Aids to Staff of Aids to Navigation Unit Workshop

年份 Year	輔航燈 Aids		輔航設備工場員工 ⁽¹⁾ Staff of Aids to Navigation Unit Workshop ⁽¹⁾		比例 Ratio (c) = (a)/(b)
	數目 Number (a)	變動百分率 Percentage Change	數目 Number (b)	變動百分率 Percentage Change	
1994	375	+5.3 %	40	0%	9.4
1995	379	+1.1 %	37	-7.5%	10.2
1996	380	+0.3 %	36	-2.7%	10.6
1997	395	+3.9 %	32	-11.1%	12.3
1998	432	+9.4 %	29	-9.4%	14.9
1999	463	+7.2 %	27	-6.9%	17.1
2000	468	+1.1 %	27	0%	17.3
2001	482	+3.0 %	25	-7.4%	19.3
2002	483	+0.2 %	27	+8.0%	17.9
2003	497	+2.9 %	27	0%	18.4
2004	509	+2.4 %	27	0%	18.9
2005	518	+1.8 %	25	-7.4%	20.7
2006	529	+2.1 %	23	-8.0%	23.0
2007	533	+0.8 %	23	0%	23.2
2008	536	+0.6 %	24	+4.3%	22.3
2009	540	+0.7 %	23	-4.2%	23.5
2010	543	+0.6 %	24	+4.3%	22.6
2011	541	-0.4 %	23	-4.2%	23.5
2012	539	-0.4 %	22	-4.3%	24.5
2013	542	+0.6 %	20	-9.1%	27.1

註釋： (1) 不包括負責在香港水域範圍內看管繫船設備／檢修浮泡的 5 位員工。

Note: Excluding five staff who are responsible for looking after the mooring facilities/overhaul of buoys within Hong Kong waters.