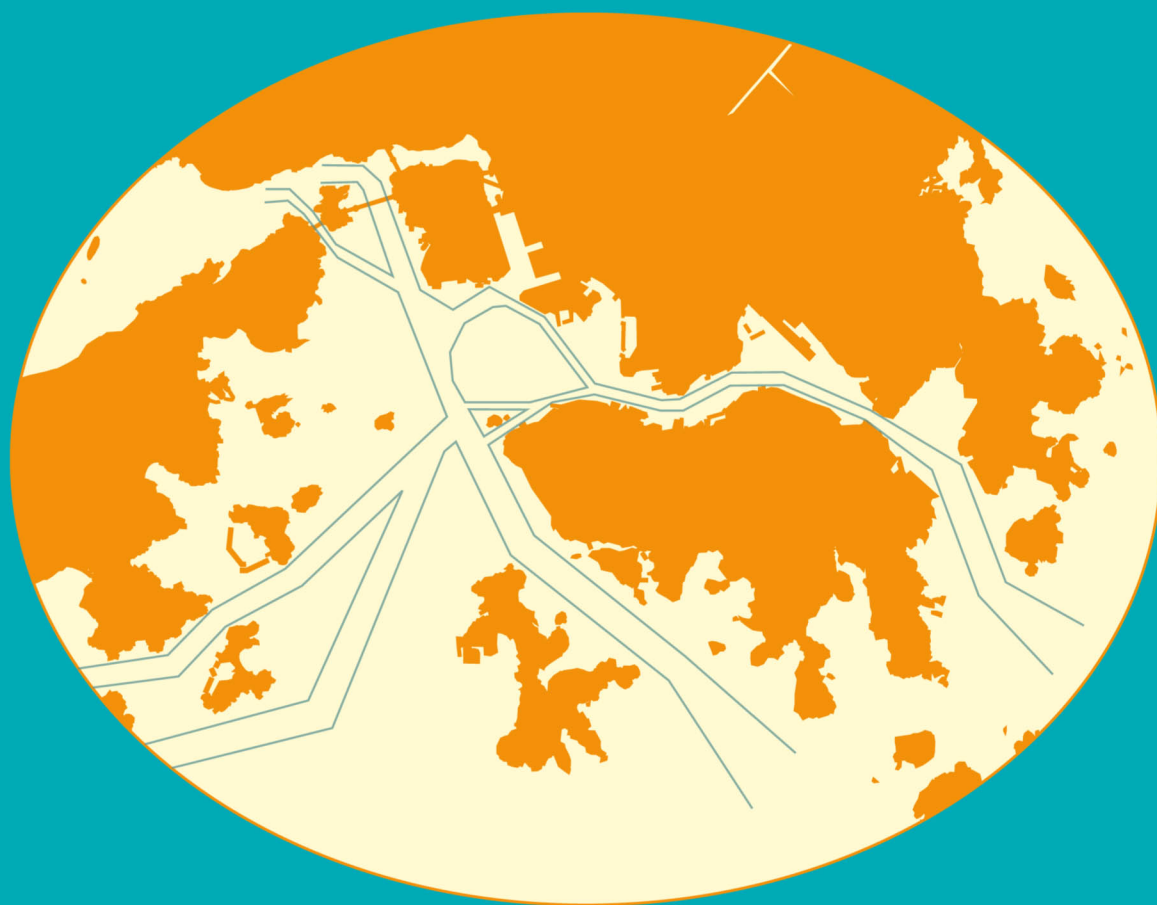


香港港口統計年報

2012

Port of Hong Kong
Statistical Tables



中華人民共和國香港特別行政區海事處
Marine Department
Hong Kong Special Administrative Region
People's Republic of China

香 港 港 口
PORT OF HONG KONG
統 計 年 報
STATISTICAL TABLES
2012

有關本刊物的查詢，請聯絡：

海事處 策劃、發展協調及港口保安部 統計組

地址：中國香港中環統一碼頭道 38 號海港政府大樓 23 樓 2307 室

電話：(852) 2852 3660 圖文傳真：(852) 2542 4638

電郵：st-sec@mardep.gov.hk

Enquiries about this publication can be directed to:

Statistics Section

Planning, Development & Port Security Branch

Marine Department

Address: Room 2307, 23/F, Harbour Building,

38 Pier Road, Central, Hong Kong, China.

Tel.: (852) 2852 3660 Fax: (852) 2542 4638

E-mail: st-sec@mardep.gov.hk

海事處網頁

Home Page of the Marine Department

<http://www.mardep.gov.hk/>

同心協力，促進卓越海事服務

We are One in Promoting Excellence in Marine Services

目錄
CONTENTS

如欲進入統計表／附錄，請按下有關的藍色項目

To view the statistical tables/appendices, please click
the item in blue

頁數
Page No.

註釋

EXPLANATORY NOTES

iv - vii

摘要

SUMMARY

2007 至 2012 年 主要港口統計數字及每年增長率

Principal Port Statistics for 2007 - 2012 and Annual Growth Rates

viii

第一部

PART I

- 港口活動

Port Activities

抵港／離港的船次

Vessel Arrivals/Departures

表 1	2012 年 按主要停泊地點分析抵港遠洋輪船的船次	
TABLE 1	Ocean Vessel Arrivals by Main Berthing Location, 2012	1
表 2	2012 年 按主要停泊地點分析離港遠洋輪船的船次	
TABLE 2	Ocean Vessel Departures by Main Berthing Location, 2012	1
表 3	2012 年 按船舶類型分析抵港船舶的船次	
TABLE 3	Vessel Arrivals by Ship Type, 2012	2
表 4	2012 年 按船旗分析抵港船舶的船次	
TABLE 4	Vessel Arrivals by Flag, 2012	3 - 4
表 5	2012 年 按船旗分析曾停靠香港的船舶數目和淨註冊噸位	
TABLE 5	Number and NRT of Vessels Calling Hong Kong by Flag, 2012	5 - 6
表 6	2012 年 按船舶類型分析離港船舶的平均在港停留時間	
TABLE 6	Average Time in Port for Vessels Departing Hong Kong by Ship Type, 2012	7
表 7	2012 年在貨櫃碼頭處理貨櫃的遠洋輪船統計數字	
TABLE 7	Statistics on Ocean Vessels with Containers Handled in Container Terminals, 2012	8
表 8	2012 年 按夏季吃水分析抵港遠洋輪船的船次	
TABLE 8	Ocean Vessel Arrivals by Summer Draft, 2012	9
表 9	2012 年 按船舶總長度分析抵港遠洋輪船的船次	
TABLE 9	Ocean Vessel Arrivals by Vessel Length Overall, 2012	9
表 10	2012 年 按主要來港原因分析抵港遠洋輪船的船次	
TABLE 10	Ocean Vessel Arrivals by Main Reason of Call, 2012	10
表 11	2012 年 按停泊地點及有否目的地分析郵輪抵港船次	
TABLE 11	Cruise Arrivals by Berthing Location by Whether the Trip with Destination, 2012	11
表 12	2012 年 跨境客運碼頭的抵港及離港航次統計數字	
TABLE 12	Statistics on Vessel Arrivals and Departures at Cross-boundary Ferry Terminals, 2012	12
表 13	2012 年 按船舶類型分析香港過境船舶的船次	
TABLE 13	Number of Vessel Trips Transit Hong Kong by Ship Type, 2012	13

客運量

Passenger Throughput

	<p>表 14 2012 年 按跨境客運碼頭分析客運量</p> <p>TABLE 14 Passenger Throughput by Cross-boundary Ferry Terminal, 2012</p>	14
	<p>表 15 2012 年 按航線分析抵港及離港乘客人次</p> <p>TABLE 15 Passenger Arrivals and Departures by Route, 2012</p>	15 - 16

貨櫃／貨物吞吐量

Container/Cargo Throughput

	<p>表 16 2012 年 按主要貨物裝卸地點分析貨櫃吞吐量</p> <p>TABLE 16 Container Throughput by Main Cargo Handling Location, 2012</p>	17
	<p>表 17 2012 年 按貨櫃碼頭以外的主要貨物裝卸地點分析裝卸的貨櫃</p> <p>TABLE 17 Containers Discharged/Loaded at Main Cargo Handling Locations Other than Container Terminals, 2012</p>	18
	<p>表 18 2012 年 按貨物種類及運輸方式劃分的裝卸港口貨物</p> <p>TABLE 18 Port Cargo Discharged/Loaded by Cargo Type and Mode of Transport, 2012</p>	19

第二部 - 港口服務及管理
PART II Port Services and Control

	<p>表 19 海港繫泊浮泡統計數字</p> <p>TABLE 19 Harbour Mooring Buoys Statistics</p>	20
	<p>表 20 2012 年 按分布地點分析香港私用繫泡數目</p> <p>TABLE 20 Number of Private Moorings Laid in Hong Kong by Location, 2012</p>	21 - 22
	<p>表 21 碇泊處一覽 (截至 2012 年年底)</p> <p>TABLE 21 List of Anchorages (as at year end 2012)</p>	23 - 24
	<p>表 22 避風塘一覽 (截至 2012 年年底)</p> <p>TABLE 22 List of Typhoon Shelters (as at year end 2012)</p>	25
	<p>表 23 公眾貨物裝卸區一覽 (截至 2012 年年底)</p> <p>TABLE 23 List of Public Cargo Working Areas (as at year end 2012)</p>	26
	<p>表 24 垃圾收集、油污和檢控個案統計數字</p> <p>TABLE 24 Refuse Collection, Oil Pollution and Prosecution Statistics</p>	27
	<p>表 25 按噸位等級分析香港持牌船隻 (截至 2012 年年底)</p> <p>TABLE 25 Hong Kong Licensed Vessels by Tonnage Classification (as at year end 2012)</p>	28 - 29

		頁數
		<u>Page No.</u>
第三部 -	船舶服務	
PART III	Shipping Services	
表 26	船舶安全監督統計數字	
TABLE 26	Ship Safety Statistics	30 - 32
表 27	本地船隻安全／海事工業安全／海事意外統計數字	
TABLE 27	Local Vessels Safety/Marine Industrial Safety/Marine Accidents Statistics	33 - 38
表 28	海員發證、註冊和僱用統計數字	
TABLE 28	Seafarers' Certification, Registration and Employment Statistics	39 - 45
表 29	香港註冊船舶統計數字	
TABLE 29	Statistics on Ships Registered in Hong Kong	46 - 47
表 30	政府船隊統計數字	
TABLE 30	Government Fleet Statistics	48
表 31	政府船舶所屬部門及可用率情況 (截至 2012 年年底)	
TABLE 31	Departmental Ownership and Availabilities of Government Vessels (as at year end 2012)	49
第四部 -	附錄	
PART IV	Appendices	
附錄 A	海事處組織架構圖 (截至 2012 年年底)	
APPENDIX A	Marine Department Organisation Chart (as at year end 2012)	A1
附錄 B	海事處的編制和實際員額 (截至 2012 年年底)	
APPENDIX B	Marine Department Establishment and Strength (as at year end 2012)	A2 - A5
附錄 C	2012 年 海事處訓練組舉辦的課程	
APPENDIX C	Training Courses Conducted by Training Section, Marine Department in 2012	A6 - A7
附錄 D	2012 年 海事處訪客	
APPENDIX D	Visitors of the Marine Department, 2012	A8 - A11
附錄 E	2012 年 新訂海事法例	
APPENDIX E	New Maritime Legislations, 2012	A12
附錄 F	2012 年 輔航設備	
APPENDIX F	Aids to Navigation, 2012	A13 - A20

1. 簡介

香港港口統計年報是香港海事處編製的港口及海事統計資料一覽表。這本年報輯錄以下統計數字和資料：-

- 抵港／離港的船次
- 客運量
- 貨櫃／貨物吞吐量
- 港口服務及管理
- 船舶服務
- 海事處組織架構圖
(編制和實際員額)
- 海事處舉辦的課程
- 海事處訪客
- 新訂海事法例
- 輔航設備

2. 資料來源

船舶進出口統計數字

船舶進出口統計數字乃根據船公司或代理人向海事處申報船舶抵達／離開港口的資料時所遞交的申報表(MO 618及MO 618A)編製而成。(摘要、表一至十)

貨櫃統計數字

在貨櫃碼頭裝運的貨櫃統計數字，主要由碼頭經營者提供。不在貨櫃碼頭裝運的遠洋輪船「空」貨櫃統計數字，由海事處根據申報表MO 618及MO 618A編製。所有其他詳細的貨櫃統計數字，皆由政府統計處根據貨物艙單抽樣編製而成。(摘要、表十六至十七)

停泊／貨物裝卸地點

有關遠洋輪船的主要貨物裝卸區和主要停泊地點的資料，均取自海事處船舶交通管理系統所保存的船舶活動報告。(表一至二、表七、表十六至十七)

1. Introduction

The *Port of Hong Kong Statistical Tables* is a collection of Hong Kong Port and Maritime statistical information compiled by the Marine Department. This publication brings together the following statistics and information: -

- Vessel Arrivals/Departures
- Passenger Throughput
- Container/Cargo Throughput
- Port Services and Control
- Shipping Services
- Marine Department Organisation Chart
(Establishment and Strength)
- Training Courses Conducted by the Marine Department
- Visitors to the Marine Department
- New Maritime Legislations
- Aids to Navigation

2. Data Sources

Vessel Statistics

Vessel statistics are based on the declaration forms (MO 618 & MO 618A) submitted to the Marine Department by shipping companies/agents for declaring arrivals/departures of vessels under their charge. (Summary Table, Tables 1 – 10)

Container Statistics

Statistics on container throughput handled at Container Terminals are mainly obtained from the terminal operators. Statistics on empty containers (ocean) handled at locations other than Container Terminals are compiled by the Marine Department based on the declaration forms of MO 618 and MO 618A. As for all the other detailed container throughput statistics, they are compiled by the Census and Statistics Department based on sampling of data in cargo manifests. (Summary Table, Tables 16 – 17)

Berthing/Cargo Handling Location

Information on the main cargo handling location and main berthing location in respect of ocean vessels are extracted from the trip activity report kept in the Marine Department's Vessel Traffic Management System. (Tables 1 – 2, 7, 16 – 17)

3. 用語及分類

容量

在本報告中，船舶的容量是以淨註冊噸位來表示。計算單位為淨註冊噸。淨註冊噸位是由一艘船的船殼內的容量(以立方呎計)，加上在甲板上用以裝載貨物、貯藏品及乘客的空間，再減去船長、高級船員、船員所住的地方、燃料、導航及推進器所佔用的地方。每一淨註冊噸相等於 100 立方呎的容量。

貨物裝卸地點

在本報告中，貨物裝卸地點的分類是「貨櫃碼頭」、「泊位和倉庫碼頭(包括公眾貨物裝卸區)」、「碇泊處」和「浮泡」。

貨櫃吞吐量

這是指以標準貨櫃單位計算的貨櫃搬運數目。一個標準貨櫃單位等同一個二十呎貨櫃的容量。

船旗

這是指船舶的國籍，表明其正式註冊的地方。香港在一九九二年正式開始船舶註冊制度。一九九七年七月一日起，香港特別行政區經中央人民政府授權繼續進行船舶註冊，並根據香港特別行政區的法律以「中國香港」的名義頒發有關證件。

內河航限

內河航限是指香港鄰近水域，一般指香港與珠江、大鵬灣及澳門，及其他在廣東和廣西與香港鄰近水域相連的內陸水域。內河航限的精確定義是指以下範圍內的水域：

- 東至東經 114°30'；
- 南至北緯 22°09'；及
- 西至東經 113°31'。

船舶類型

這是指船舶的特定用途，分為十八類：運車船、化學品運載船、普通貨船、其他貨船、郵船／渡輪、散裝乾貨船、漁船／魚類加工船、全槽格式貨櫃船、液化氣體運載船、駁船／躉船／貨艇、油輪、礦沙／散貨／油類混用船、其他液體運載船、遊樂船、滾裝卸式船、半貨櫃船、拖船及其他。

3. Terms and Classifications

Capacity

In this report, the capacity of a vessel is expressed in terms of net registered tonnage (NRT). The unit of measurement is net registered ton. NRT is, broadly, the capacity of a ship in cubic feet of the space within the hull, and of the enclosed space above the deck available for cargo, stores and passengers but excluding space used for the accommodation of the master, officers, crew, fuel, navigation and propelling machinery. One net registered ton is equivalent to 100 cubic feet of capacity.

Cargo Handling Location

The types of cargo handling location shown in this report are “container terminals”, “berths and wharves (including public cargo working areas)”, “anchorage” and “buoys”.

Container Throughput

This refers to the number of movement of cargo containers in TEU terms. A TEU stands for a twenty-foot equivalent unit.

Flag

This is the nationality of the vessel, indicating where she is officially registered. In Hong Kong, the official vessel registration system was set up in 1992. As from 1.7.1997, the Hong Kong Special Administrative Region is authorised by the Central People’s Government to continue to maintain a shipping register and issue related certificates under its legislation, using the name ‘Hong Kong, China’.

River Trade Limits

River trade limits mean the waters in the vicinity of Hong Kong, which broadly include the Pearl River, Mirs Bay and Macao, and other inland waters in Guangdong and Guangxi which are accessible from waters in the vicinity of Hong Kong. The precise definition of river trade limits refer to waters within the following boundaries:

- to the East, meridian 114°30' East;
- to the South, parallel 22°09' North; and
- to the West, meridian 113°31' East.

Ship Type

This refers to the known specific function of the ship. Eighteen types of ship are distinguished: car carrier, chemical carrier/tanker, conventional cargo vessel, other cargo vessel, cruise/ferry, dry bulk carrier, fishing/fish processing vessel, fully cellular container vessel, gas carrier/tanker, lighter/barge/cargo junk, oil tanker, ore/bulk/oil carrier, other fluid carrier, pleasure vessel, roll on/roll off, semi-container vessel, tug and others.

4. 資料定義

內河船隻

根據《船舶及港口管制條例》(第 313 章)所訂，內河船隻是指進出香港與內河航限內的港口之間的船隻。(摘要、表三至六、表十六至十八)

停泊／貨物裝卸地點

船舶在進入香港水域後可能停泊超過一個停泊地點。若船舶來港的主要原因是裝卸貨物，則主要的貨物裝卸地點和主要的停泊地點是指最為昂貴的地點，當中以貨櫃碼頭居首位，隨後是泊位和倉庫碼頭(包括公眾貨物裝卸區)、碇泊處和浮泡。若船舶來港的主要原因不是裝卸貨物，主要停泊地點為停留時間最長的地點。(表一至二、表七、表十六至十七)

內河客船

內河客船的抵港次數是指船隻停泊於港澳碼頭、中國客運碼頭、屯門客運碼頭和海天客運碼頭的次數。(摘要、表三至五)

5. 資料局限

遠洋客船數字包括在內河航限以外水域行駛的遊樂船。但是，由於有些船主／代理人沒有申報這些船舶的淨註冊噸位資料給海事處，故遠洋客船的淨註冊噸位數字可能輕微低於實際的數字。(摘要、表一至五)

由於不能準確地統計本地持牌遊樂船和漁船來往香港及內河航限內的船次，故這兩類船隻沒有包括在內河船隻統計範圍內。(摘要、表三至六)

4. Data Definitions

River Vessels

In accordance with the Shipping and Port Control Ordinance, Cap. 313, Laws of Hong Kong, river vessels refer to those travelling between Hong Kong and ports that are within the river trade limits. (Summary Table, Tables 3 – 6, 16 – 18)

Berthing/Cargo Handling Location

A vessel may berth at more than one location after entering into Hong Kong waters. If the main reason of call of the vessel is for loading/discharging cargo, both the main cargo handling location and the main berthing location refer to the most costly location, with Container Terminals ranked first, followed by Berths and Wharves (including Public Cargo Working Areas), Anchorages and Buoys. If the main reason of call is not for loading/discharging cargo, the main berthing location refers to the one with the longest stay. (Tables 1 – 2, 7, 16 – 17)

River Passenger Vessels

The figures on arrivals of river passenger vessels refer to the number of berthings at the Macau Ferry Terminal (MFT), the China Ferry Terminal (CFT), the Tuen Mun Ferry Terminal (TMFT) and SkyPier. (Summary Table, Tables 3 – 5)

5. Data Limitations

The number of ocean passenger vessels includes pleasure vessels plying beyond the river trade limits. However, as some of their owners/agents do not report NRT information to the Marine Department, the total NRT for ocean passenger vessels may be slightly under-reported. (Summary Table, Tables 1 – 5)

As accurate number of trips of locally licensed pleasure vessels and fishing vessels plying between Hong Kong and the river trade limits is not available, these two categories of vessels are not included in the river vessel statistics. (Summary Table, Tables 3 – 6)

6. 數字的進位

客運量、貨物和貨櫃吞吐量及淨註冊噸位統計數字是計算至最接近的千位。

項目	單位
客運量	千位
貨物吞吐量	千公噸
貨櫃吞吐量	千個標準貨櫃單位
淨註冊噸位	千噸

由於進位關係，本報告中所列的個別數字之和可能不等於其總數。另外，變動百分率和比重百分率是以未經進位的數字計算所得。

7. 代號

- () 與去年同期比較的變動百分率
- ※ 變動多於 1000%
- ^ 變動在 ±0.05% 之間
- @ 比重百分率少於 0.05
- † 少於 500 個標準貨櫃單位／人次／公噸
- # 臨時數字
- * 修訂數字
- N.A. 沒有數字
- 不適用

6. Rounding of Figures

Statistics on passenger throughput, cargo and container throughput and NRT are rounded to the nearest thousand.

Items	Units
Passenger Throughput	thousand units
Cargo Throughput	'000 tonnes
Container Throughput	'000 TEUs
NRT	'000 tons

Figures shown in this report may not add up to the respective totals due to rounding. Furthermore, percentage changes and percentage shares are calculated from unrounded figures.

7. Symbols

- () % change over the same period of preceding year
- ※ Change more than 1000%
- ^ Change within ±0.05%
- @ Percentage share less than 0.05
- † Less than 500 TEUs/ passengers/ tonnes
- # Provisional figures
- * Revised figures
- N.A. Not available
- Not applicable

策劃、發展協調及港口保安部
統計組

二零一三年五月

Statistics Section
Planning, Development & Port Security Branch

May 2013

摘要
SUMMARY

2007 至 2012 年主要港口統計數字及每年增長率
Principal Port Statistics for 2007 – 2012 and Annual Growth Rates

項目 Item	2007	2011	2012	每年增長率 Annual Growth Rate	
				2011-2012	2007-2012 ⁽¹⁾
1. 抵港船次 Number of Vessel Arrivals	225 991	204 670	190 859	-6.7%	-3.3%
(a) 遠洋輪船 Ocean Vessel	37 152	32 490	30 703	-5.5%	-3.7%
貨船 Cargo Vessel	33 463	30 124	28 286	-6.1%	-3.3%
客船 Passenger Vessel	3 689	2 366	2 417	+2.2%	-8.1%
(b) 內河船隻 River Vessel	188 839	172 180	160 156	-7.0%	-3.2%
貨船 Cargo Vessel	108 945	84 695	78 094	-7.8%	-6.4%
客船 ⁽²⁾ Passenger Vessel ⁽²⁾	79 894	87 485	82 062	-6.2%	+0.5%
2. 抵港船舶的淨註冊噸位 (千噸) NRT of Vessel Arrivals ('000 tons)	474 921	534 125	518 985	-2.8%	+1.8%
(a) 遠洋輪船 Ocean Vessel	372 488	425 763	412 063	-3.2%	+2.0%
(b) 內河船隻 ⁽²⁾ River Vessel ⁽²⁾	102 433	108 361	106 923	-1.3%	+0.9%
3. 貨櫃吞吐量 (千個標準貨櫃單位) Container Throughput ('000 TEUs)	23 998	24 384	23 117	-5.2%	-0.7%
(i) 按停泊地點分析 By Berthing Location					
貨櫃碼頭 Container Terminals	17 322	17 416	17 475	+0.3%	+0.2%
貨櫃碼頭以外 Other than Container Terminals	6 677	6 968	5 642	-19.0%	-3.3%
(ii) 按運輸方式分析 By Mode of Transport					
遠洋 Ocean	16 913	17 419	16 689	-4.2%	-0.3%
內河 River	7 085	6 965	6 428	-7.7%	-1.9%
4. 貨物吞吐量 (千公噸) Cargo Throughput ('000 tonnes)	245 433	277 444	269 282	-2.9%	+1.9%
(a) 海運 Seaborne	177 347	194 926	188 860	-3.1%	+1.3%
(b) 河運 River	68 086	82 518	80 423	-2.5%	+3.4%
5. 港澳碼頭、中國客運碼頭及屯門客運碼頭客運量 (千位) Total Passenger Throughput at MFT, CFT and TMFT ('000)	24 051	25 750	26 000	+1.0%	+1.6%
(a) 澳門 ⁽³⁾ Macau ⁽³⁾	16 990	20 749	21 017	+1.3%	+4.3%
(b) 中國內地 Mainland China	6 743	4 774	4 743	-0.7%	-6.8%
(c) 其他 Others	318	227	240	+5.9%	-5.5%

備註： 由於進位關係，本摘要中所列的個別數字之和可能不等於其總數。

Remark: Figures shown in this summary may not add up to the respective totals due to rounding.

註釋： (1) 複合平均每年增長率

(2) 由二零零七年開始，數字不包括非載客的跨境渡輪船次。

(3) 數字包括乘搭直升機來往澳門的乘客。

Notes: Average annual compound growth rate

As from 2007, non-passenger carrying trips of cross-boundary ferry are excluded.

Helicopter passengers to and from Macau are included.

統計表
Statistical
Tables

表 1
TABLE 1

2012 年按主要停泊地點分析抵港遠洋輪船的船次
Ocean Vessel Arrivals by Main Berthing Location, 2012

主要停泊地點 Main Berthing Location	主要船舶類別 Main Vessel Category				總計 Total	
	貨船 Cargo Vessels		客船 Passenger Vessels			
	抵港船次 No. of Vessel Arrivals	淨註冊噸位 (千噸) NRT ('000)	抵港船次 No. of Vessel Arrivals	淨註冊噸位 (千噸) NRT ('000)	抵港船次 No. of Vessel Arrivals	淨註冊噸位 (千噸) NRT ('000)
	(%)	(%)	(%)	(%)	(%)	(%)
貨櫃碼頭 Container Terminals	12 372 (-7.4)	286 991 (-5.3)	9 (+50.0)	641 (+35.6)	12 381 (-7.4)	287 632 (-5.2)
泊位和倉庫碼頭 Berths and Wharves	1 577 (+7.5)	11 547 (+8.5)	1 042 (-1.3)	12 506 (-2.4)	2 619 (+3.8)	24 053 (+2.5)
碇泊處 Anchorage	14 250 (-6.0)	92 478 (+1.5)	240 (+0.4)	249 (-22.9)	14 490 (-5.9)	92 727 (+1.4)
浮泡 Buoys	87 (-30.4)	287 (-33.1)	1 126 (+5.7)	7 364 (+6.5)	1 213 (+1.9)	7 651 (+4.2)
總計 Total	28 286 (-6.1)	391 302 (-3.4)	2 417 (+2.2)	20 760 (+1.1)	30 703 (-5.5)	412 063 (-3.2)

表 2
TABLE 2

2012 年按主要停泊地點分析離港遠洋輪船的船次
Ocean Vessel Departures by Main Berthing Location, 2012

主要停泊地點 Main Berthing Location	主要船舶類別 Main Vessel Category				總計 Total	
	貨船 Cargo Vessels		客船 Passenger Vessels			
	離港船次 No. of Vessel Departures	淨註冊噸位 (千噸) NRT ('000)	離港船次 No. of Vessel Departures	淨註冊噸位 (千噸) NRT ('000)	離港船次 No. of Vessel Departures	淨註冊噸位 (千噸) NRT ('000)
	(%)	(%)	(%)	(%)	(%)	(%)
貨櫃碼頭 Container Terminals	12 447 (-7.4)	288 950 (-5.5)	10 (+42.9)	746 (+35.2)	12 457 (-7.4)	289 696 (-5.4)
泊位和倉庫碼頭 Berths and Wharves	1 490 (-1.1)	11 864 (+7.3)	1 039 (-1.5)	12 466 (-2.6)	2 529 (-1.2)	24 330 (+2.0)
碇泊處 Anchorage	14 759 (-3.8)	97 969 (+10.1)	321 (-1.2)	154 (-57.4)	15 080 (-3.7)	98 124 (+9.8)
浮泡 Buoys	70 (-20.5)	229 (-25.0)	1 128 (+6.0)	7 377 (+6.8)	1 198 (+4.0)	7 607 (+5.5)
總計 Total	28 766 (-5.3)	399 013 (-1.7)	2 498 (+1.9)	20 744 (+0.6)	31 264 (-4.8)	419 757 (-1.6)

表3
TABLE 3

2012年按船舶類型分析抵港船舶的船次
Vessel Arrivals by Ship Type, 2012

船舶類型 Ship Type	遠洋輪船 Ocean Vessels		內河船隻 River Vessels		總計 Total	
	抵港船次 No. of Vessel Arrivals	比重 百分率 Percentage Share	抵港船次 No. of Vessel Arrivals	比重 百分率 Percentage Share	抵港船次 No. of Vessel Arrivals	比重 百分率 Percentage Share
	(%)		(%)		(%)	
運車船 Car Carrier	120 (+10.1)	0.4%	3 (-57.1)	@	123 (+6.0)	0.1%
化學品運載船 Chemical Carrier/Tanker	336 (-4.0)	1.1%	209 (-26.7)	0.1%	545 (-14.2)	0.3%
普通貨船 Conventional Cargo Vessel	2 203 (-18.9)	7.2%	7 144 (-16.1)	4.5%	9 347 (-16.8)	4.9%
其他貨船 Other Cargo Vessel	0 (-)	0%	0 (-100.0)	0%	0 (-100.0)	0%
郵船/渡輪 Cruise/Ferry	2 180 (+1.9)	7.1%	82 062 (-6.2)	51.2%	84 242 (-6.0)	44.1%
散裝乾貨船 Dry Bulk Carrier	1 928 (+19.4)	6.3%	5 211 (+24.0)	3.3%	7 139 (+22.7)	3.7%
漁船/魚類加工船 Fishing/Fish Processing Vessel	318 (+40.7)	1.0%	N.A.	N.A.	318 (+40.7)	0.2%
全槽格式貨櫃船 Fully Cellular Container Vessel	21 171 (-7.0)	69.0%	54 633 (-9.2)	34.1%	75 804 (-8.6)	39.7%
液化氣體運載船 Gas Carrier/Tanker	330 (-7.3)	1.1%	79 (0)	@	409 (-6.0)	0.2%
駁船/躉船/貨艇 Lighter/Barge/Cargo Junk	70 (+55.6)	0.2%	3 561 (-19.0)	2.2%	3 631 (-18.3)	1.9%
油輪 Oil Tanker	980 (-9.0)	3.2%	555 (-18.4)	0.3%	1 535 (-12.6)	0.8%
礦沙/散貨/油類混用船 Ore/Bulk/Oil (OBO) Carrier	25 (+212.5)	0.1%	3 (-25.0)	@	28 (+133.3)	@
其他液體運載船 Other Fluid Carrier	0 (-)	0%	0 (-)	0%	0 (-)	0%
遊樂船 Pleasure Vessel	237 (+4.9)	0.8%	N.A.	N.A.	237 (+4.9)	0.1%
滾裝卸式船 Roll On/Roll Off	243 (-24.8)	0.8%	23 (-50.0)	@	266 (-27.9)	0.1%
半貨櫃船 Semi-container Vessel	242 (+12.0)	0.8%	3 689 (+24.3)	2.3%	3 931 (+23.5)	2.1%
拖船 Tug	147 (-14.5)	0.5%	2 816 (-12.3)	1.8%	2 963 (-12.4)	1.6%
其他 Others	173 (+26.3)	0.6%	168 (+63.1)	0.1%	341 (+42.1)	0.2%
總計 Total	30 703 (-5.5)	100.0%	160 156 (-7.0)	100.0%	190 859 (-6.7)	100.0%

表 4
TABLE 4

2012 年按船旗分析抵港船舶的船次
Vessel Arrivals by Flag, 2012

船旗 Flag	遠洋輪船 Ocean Vessels		內河船隻 River Vessels		總計 Total	
	抵港船次 No. of Vessel Arrivals	淨註冊噸位 (千噸) NRT ('000)	抵港船次 No. of Vessel Arrivals	淨註冊噸位 (千噸) NRT ('000)	抵港船次 No. of Vessel Arrivals	淨註冊噸位 (千噸) NRT ('000)
	(%)	(%)	(%)	(%)	(%)	(%)
安提瓜和巴布達 Antigua and Barbuda	969 (+3.0)	7 895 (-10.9)	67 (+42.6)	571 (+15.2)	1 036 (+4.9)	8 466 (-9.5)
巴哈馬 Bahamas	715 (-7.0)	7 763 (-22.6)	59 (-6.3)	370 (-52.6)	774 (-7.0)	8 133 (-24.8)
伯利茲 Belize	119 (+26.6)	286 (+74.2)	17 (+13.3)	28 (-24.5)	136 (+24.8)	313 (+56.2)
柬埔寨 Cambodia	132 (-41.9)	341 (-15.7)	14 (-26.3)	34 (+9.0)	146 (-40.7)	375 (-13.9)
中國內地 Mainland China	6 921 (-6.9)	20 016 (+30.2)	96 188 (-6.4)	56 074 (+0.7)	103 109 (-6.5)	76 090 (+7.1)
塞浦路斯 Cyprus	586 (+0.2)	6 821 (-16.2)	48 (-11.1)	655 (-17.1)	634 (-0.8)	7 477 (-16.3)
丹麥 Denmark	218 (-13.8)	10 770 (-13.2)	10 (-33.3)	353 (-34.4)	228 (-14.9)	11 122 (-14.1)
法國 France	58 (-12.1)	3 303 (+11.9)	8 (-38.5)	396 (-44.7)	66 (-16.5)	3 699 (+0.9)
德國 Germany	625 (-20.0)	20 427 (-16.1)	48 (-35.1)	1 506 (-23.0)	673 (-21.3)	21 933 (-16.6)
希臘 Greece	124 (-31.9)	4 870 (-22.5)	9 (-30.8)	404 (+14.4)	133 (-31.8)	5 274 (-20.6)
香港 Hong Kong	3 001 (+2.1)	55 452 (+11.2)	62 046 (-7.8)	19 838 (-8.7)	65 047 (-7.4)	75 291 (+5.2)
意大利 Italy	135 (-26.6)	3 476 (-26.7)	4 (-33.3)	95 (-35.7)	139 (-26.8)	3 571 (-27.0)
基里巴斯共和國 Republic of Kiribati	739 (+29.6)	5 570 (+18.4)	6 (-33.3)	15 (-83.8)	745 (+28.7)	5 585 (+16.4)
南韓 Republic of Korea	694 (-0.1)	5 670 (+10.1)	58 (+3.6)	417 (-2.0)	752 (+0.1)	6 087 (+9.1)
利比里亞 Liberia	3 363 (-12.1)	70 703 (-8.1)	215 (-18.6)	6 077 (+3.9)	3 578 (-12.5)	76 780 (-7.2)
馬耳他 Malta	329 (+14.6)	7 706 (+10.7)	27 (-18.2)	668 (-3.4)	356 (+11.3)	8 374 (+9.4)
馬紹爾群島 Marshall Islands	1 125 (+8.9)	19 024 (+7.6)	81 (+26.6)	1 221 (+25.5)	1 206 (+9.9)	20 245 (+8.6)

表 4 – 續
TABLE 4 – Cont'd

船旗 Flag	遠洋輪船 Ocean Vessels		內河船隻 River Vessels		總計 Total	
	抵港船次 No. of Vessel Arrivals	淨註冊噸位 (千噸) NRT ('000)	抵港船次 No. of Vessel Arrivals	淨註冊噸位 (千噸) NRT ('000)	抵港船次 No. of Vessel Arrivals	淨註冊噸位 (千噸) NRT ('000)
	(%)	(%)	(%)	(%)	(%)	(%)
巴拿馬 Panama	6 252 (-11.6)	99 763 (-5.6)	735 (-6.3)	12 682 (+13.3)	6 987 (-11.1)	112 445 (-3.8)
菲律賓 Philippines	53 (+6.0)	546 (-4.8)	6 (+50.0)	63 (+102.1)	59 (+9.3)	609 (+0.7)
塞拉利昂 Sierra Leone	55 (-15.4)	123 (-4.7)	5 (0)	12 (-24.0)	60 (-14.3)	135 (-6.8)
新加坡 Singapore	2 418 (-1.3)	33 963 (+2.3)	230 (-2.1)	3 007 (+12.3)	2 648 (-1.4)	36 971 (+3.0)
聖文森特和 格林納丁斯 St. Vincent and the Grenadines	86 (+14.7)	592 (+15.0)	10 (-37.5)	68 (+8.0)	96 (+5.5)	659 (+14.3)
台灣 Taiwan	555 (+42.7)	3 427 (+16.6)	15 (-61.5)	131 (-60.8)	570 (+33.2)	3 558 (+8.7)
泰國 Thailand	166 (+41.9)	532 (+63.3)	3 (-75.0)	11 (-66.9)	169 (+31.0)	543 (+51.1)
英國 United Kingdom	649 (-13.9)	17 269 (-19.4)	49 (-2.0)	1 148 (-18.1)	698 (-13.2)	18 417 (-19.4)
越南 Vietnam	214 (-11.9)	807 (-8.9)	15 (-37.5)	80 (-37.8)	229 (-14.2)	887 (-12.5)
其他 ⁽¹⁾ Others ⁽¹⁾	402 (-1.2)	4 947 (-2.9)	183 (-8.5)	999 (-16.6)	585 (-3.6)	5 946 (-5.5)
總計 Total	30 703 (-5.5)	412 063 (-3.2)	160 156 (-7.0)	106 923 (-1.3)	190 859 (-6.7)	518 985 (-2.8)

註釋： (1) 包括所有在二零一二年遠洋輪船抵港船次總數少於 50 船次的旗號。

Note: Including those flags of which the total number of ocean vessel arrivals in 2012 being less than 50.

表 5
TABLE 5

2012 年按船旗分析曾停靠香港的船舶數目和淨註冊噸位
Number and NRT of Vessels Calling Hong Kong by Flag, 2012

船旗 Flag	遠洋輪船 Ocean Vessels				內河船隻 River Vessels			
	船舶數目 Number of Vessels		淨註冊噸位 (千噸) NRT ('000)		船舶數目 Number of Vessels		淨註冊噸位 (千噸) NRT ('000)	
	(%)		(%)		(%)		(%)	
安提瓜和巴布達 Antigua and Barbuda	123	(-14.6)	1 188	(-17.9)	41	(+36.7)	393	(+16.7)
巴哈馬 Bahamas	89	(-11.9)	2 010	(-3.4)	14	(-41.7)	208	(-64.8)
伯利茲 Belize	33	(-2.9)	92	(+34.8)	14	(+27.3)	25	(-15.8)
柬埔寨 Cambodia	49	(-22.2)	126	(+4.4)	9	(-40.0)	20	(-20.3)
中國內地 Mainland China	563	(+14.4)	5 340	(+35.5)	1 461	(-1.1)	3 653	(+25.2)
塞浦路斯 Cyprus	94	(-1.1)	1 669	(-2.5)	23	(-25.8)	385	(-32.1)
丹麥 Denmark	60	(0)	2 647	(+4.2)	10	(-33.3)	353	(-34.4)
德國 Germany	142	(-1.4)	4 647	(+3.9)	33	(-36.5)	1 074	(-21.9)
希臘 Greece	44	(-24.1)	1 617	(-22.4)	7	(-30.0)	284	(+5.6)
香港 Hong Kong	749	(+14.9)	12 241	(+18.6)	590	(-3.6)	2 942	(+1.4)
印尼 Indonesia	25	(+13.6)	224	(+27.0)	12	(+9.1)	156	(+8.7)
意大利 Italy	31	(-24.4)	718	(-31.6)	3	(-40.0)	69	(-42.9)
基里巴斯共和國 Republic of Kiribati	22	(+10.0)	67	(-15.0)	4	(-55.6)	9	(-90.7)
南韓 Republic of Korea	132	(-10.8)	958	(+5.0)	40	(-14.9)	298	(-26.8)
利比里亞 Liberia	569	(-4.8)	14 250	(-3.6)	132	(-21.0)	3 484	(-10.4)
馬來西亞 Malaysia	23	(-41.0)	298	(-34.1)	8	(-63.6)	119	(-52.0)

表 5 – 續
TABLE 5 – Cont'd

船旗 Flag	遠洋輪船 Ocean Vessels				內河船隻 River Vessels			
	船舶數目 Number of Vessels		淨註冊噸位 (千噸) NRT ('000)		船舶數目 Number of Vessels		淨註冊噸位 (千噸) NRT ('000)	
	(%)		(%)		(%)		(%)	
馬耳他 Malta	115	(+3.6)	2 851	(+6.4)	17	(-41.4)	421	(-26.4)
馬紹爾群島 Marshall Islands	226	(+10.8)	4 285	(+0.9)	59	(+7.3)	1 071	(+22.1)
挪威 Norway	23	(-4.2)	359	(-12.9)	6	(+100.0)	145	(+126.6)
巴拿馬 Panama	1 297	(-1.3)	23 169	(+3.2)	366	(-19.9)	6 106	(-14.1)
塞拉利昂 Sierra Leone	20	(-23.1)	79	(+63.3)	5	(0)	12	(-24.0)
新加坡 Singapore	393	(-4.4)	6 635	(+6.2)	125	(+4.2)	1 834	(+28.0)
聖文森特和 格林納丁斯 St. Vincent and the Grenadines	36	(+12.5)	281	(-5.3)	9	(-40.0)	52	(+4.1)
台灣 Taiwan	45	(+45.2)	606	(+58.6)	7	(-12.5)	63	(+11.9)
泰國 Thailand	30	(-6.3)	104	(+36.8)	3	(-72.7)	11	(-63.6)
英國 United Kingdom	155	(-3.7)	4 931	(+11.7)	30	(-16.7)	842	(-22.2)
越南 Vietnam	52	(+10.6)	264	(+8.7)	13	(-31.6)	77	(-34.2)
其他 ⁽¹⁾ Others ⁽¹⁾	197	(+9.4)	2 869	(+3.5)	57	(-14.9)	617	(-38.2)
總計 Total	5 337	(+1.0)	94 526	(+4.4)	3 098	(-7.9)	24 721	(-7.9)

備註： 此表內的遠洋輪船及內河船隻數目不能直接地加在一起，因為同一艘船舶在一年內可能會被歸納於遠洋及內河船舶類別，視乎該船舶在該年度不同的抵港旅程是否超越內河航限而定。

Remark: The number of ocean vessels and river vessels in this table cannot be grouped together by simple addition as the same vessel may be classified as ocean and river vessel during a year depending on whether her trips to Hong Kong in that year were beyond the river trade limits or not.

註釋： (1) 包括所有在二零一二年遠洋輪船抵港船舶總數少於 20 船舶的旗號。

Note: Including those flags of which the total number of ocean vessels calling Hong Kong in 2012 being less than 20.

表 6
TABLE 6

2012 年按船舶類型分析離港船舶的平均在港停留時間
Average Time in Port for Vessels Departing Hong Kong by Ship Type, 2012

小時
Hours

船舶類型 Ship Type	遠洋輪船 Ocean Vessels	內河船隻 River Vessels	總計 Total
運車船 Car Carrier	6	8	7
化學品運載船 Chemical Carrier/Tanker	19	59	28
普通貨船 Conventional Cargo Vessel	32	29	30
郵船／渡輪 Cruise/Ferry	13	N.A.	N.A.
散裝乾貨船 Dry Bulk Carrier	27	37	34
漁船／魚類加工船 Fishing/Fish Processing Vessel	65	N.A.	N.A.
全槽格式貨櫃船 Fully Cellular Container Vessel	24	37	34
液化氣體運載船 Gas Carrier/Tanker	49	74	52
駁船／躉船／貨艇 Lighter/Barge/Cargo Junk	90	75	75
油輪 Oil Tanker	36	118	59
礦沙／散貨／油類混用船 Ore/Bulk/Oil (OBO) Carrier	31	**	**
滾裝卸式船 Roll On/Roll Off	22	10	19
半貨櫃船 Semi-container Vessel	34	46	45
拖船 Tug	173	125	128
其他 Others	41	84	59
所有船舶類型 All Ship Types	28	42	38

註釋： ** 包括在“其他”。

Note: ** Included in “Others”.

表 7
TABLE 7

2012 年在貨櫃碼頭處理貨櫃的遠洋輪船統計數字
Statistics on Ocean Vessels with Containers Handled in Container Terminals, 2012

項目 Item	抵港船次 No. of Vessel Arrivals	比重百分率 Percentage Share
在貨櫃碼頭處理貨櫃的遠洋輪船 Ocean Vessels with Containers Handled in Container Terminals	12 344 (-7.5)	100.0%
- 按載重噸分析 Analysed by Deadweight Tonnage (DWT)	(%)	
少於 10 000 載重噸 Under 10 000 DWT	420 (-47.7)	3.4%
10 000 - 19 999 載重噸 10 000 - 19 999 DWT	1 816 (-6.0)	14.7%
20 000 - 29 999 載重噸 20 000 - 29 999 DWT	2 302 (-0.9)	18.6%
30 000 - 39 999 載重噸 30 000 - 39 999 DWT	1 405 (+6.4)	11.4%
40 000 - 49 999 載重噸 40 000 - 49 999 DWT	617 (-21.5)	5.0%
50 000 - 99 999 載重噸 50 000 - 99 999 DWT	4 301 (-10.1)	34.8%
100 000 載重噸及以上 100 000 DWT and above	1 483 (+6.1)	12.0%
- 按主要貿易地區／國家分析 (根據所申報的上一個停靠港口) Analysed by Principal Trading Region/Country (Based on Reported Previous Port)		
亞洲 Asia	10 760 (-7.4)	87.2%
– 中國內地 – Mainland China	2 872 (-13.7)	23.3%
– 台灣 – Taiwan	2 400 (-7.5)	19.4%
– 新加坡 – Singapore	1 558 (-6.1)	12.6%
– 越南 – Vietnam	1 260 (+11.7)	10.2%
– 泰國 – Thailand	688 (-5.9)	5.6%
– 日本 – Japan	655 (-3.8)	5.3%
– 韓國 – Korea	487 (-5.6)	3.9%
– 其他 – Others	840 (-14.8)	6.8%
北美洲 North America	500 (-28.7)	4.1%
西歐 Western Europe	383 (-5.0)	3.1%
中美洲、南美洲 Central and South America	243 (+42.9)	2.0%
大洋洲 Oceania	185 (+16.4)	1.5%
非洲 Africa	60 (-36.2)	0.5%
中東 Middle East	47 (+6.8)	0.4%
獨立國家聯合體及東歐 CIS and Eastern Europe	39 (-13.3)	0.3%
其他 Others	127 (+16.5)	1.0%
使用貨櫃碼頭處理貨櫃的遠洋輪船在香港港口的平均停留時間 (小時) Average Time in Hong Kong Port for Ocean Vessels with Containers Handled in Container Terminals (Hours)	14.2 ⁽¹⁾	

註釋： (1) 指在香港水域停留的整段時間而非單在貨櫃碼頭逗留的時間。

Note: Refers to total time in Hong Kong waters and not only time at container terminals.

表 8
TABLE 8

2012 年按夏季吃水分析抵港遠洋輪船的船次
Ocean Vessel Arrivals by Summer Draft, 2012

夏季吃水 (米) Summer Draft (m)	抵港船次 No. of Vessel Arrivals		比重百分率 Percentage Share
		(%)	
< 2	75	(-15.7)	0.2%
2 – < 4	4 551	(-16.4)	14.8%
4 – < 6	3 436	(-5.8)	11.2%
6 – < 8	3 028	(-14.6)	9.9%
8 – < 10	6 541	(+5.2)	21.3%
10 – < 12	3 826	(-10.7)	12.5%
12 – < 14	3 523	(-1.4)	11.5%
14 – < 16	4 773	(-0.3)	15.5%
16 – < 18	485	(-3.0)	1.6%
≥ 18	465	(+16.5)	1.5%
總計 Total	30 703	(-5.5)	100.0%

表 9
TABLE 9

2012 年按船舶總長度分析抵港遠洋輪船的船次
Ocean Vessel Arrivals by Vessel Length Overall, 2012

船舶總長度 (米) Vessel Length Overall (m)	抵港船次 No. of Vessel Arrivals		比重百分率 Percentage Share
		(%)	
< 30	423	(+10.4)	1.4%
30 – < 50	387	(-20.0)	1.3%
50 – < 100	6 824	(-14.6)	22.2%
100 – < 150	5 701	(-1.6)	18.6%
150 – < 200	7 743	(-0.4)	25.2%
200 – < 250	3 187	(+1.9)	10.4%
250 – < 300	3 874	(-8.6)	12.6%
≥ 300	2 564	(-5.1)	8.4%
總計 Total	30 703	(-5.5)	100.0%

表 10
TABLE 10

2012 年按主要來港原因分析抵港遠洋輪船的船次
Ocean Vessel Arrivals by Main Reason of Call, 2012

主要來港原因 Main Reason of Call	抵港船次 No. of Vessel Arrivals		比重百分率 Percentage Share
		(%)	
裝貨、卸貨 Loading and Discharging Cargo	21 421	(-8.9)	69.8%
旅遊 (郵輪) Tour (Cruise)	2 166	(+1.9)	7.1%
交換文件 Switch Documents	1 818	(-3.2)	5.9%
卸貨 Discharging Cargo	1 656	(-6.5)	5.4%
船上用品補給 (燃料除外) Taking Stores (Except Bunkers)	1 320	(+17.4)	4.3%
補充燃料 Bunkers	970	(+41.4)	3.2%
裝貨 Loading Cargo	609	(-21.2)	2.0%
消遣／運動 (遊艇) Pleasure/Sports (Pleasure Vessels)	237	(+5.3)	0.8%
船員變動 (貨船) Change of Crew (Cargo Vessels)	83	(+151.5)	0.3%
緊急修理、非例行入乾塢 Emergency Repair, Non-routine Dry Docking	60	(+33.3)	0.2%
例行入乾塢 Routine Dry Docking	21	(-25.0)	0.1%
其他 Others	342	(+19.6)	1.1%
總計 Total	30 703	(-5.5)	100.0%

表 11
TABLE 11

2012 年按停泊地點及有否目的地分析郵輪抵港船次
Cruise Arrivals by Berthing Location by Whether the Trip with Destination, 2012

停泊地點 Berthing Location	郵輪抵港船次 ⁽¹⁾ Number of Cruise Arrivals ⁽¹⁾					
	有目的地 With Destination		公海 ⁽²⁾ High Seas ⁽²⁾		總計 Total	
	數目 Number	變動百分率 Percentage Change	數目 Number	變動百分率 Percentage Change	數目 Number	變動百分率 Percentage Change
海運大廈 Ocean Terminal	68	-5.6%	360	-0.8%	428	-1.6%
中國客運碼頭 China Ferry Terminal	11	0%	587	-0.8%	598	-0.8%
浮泡和碇泊處 Buoys and Anchorages	5	-16.7%	1 118	+5.1%	1 123	+5.0%
其他 ⁽³⁾ Others ⁽³⁾	14	-6.7%	3	+50.0%	17	0%
總計 Total	98	-5.8%	2 068	+2.3%	2 166	+1.9%

- 註釋： (1) 不包括非載客的船次，例如緊急修理、補充燃料等。
Notes: Excluding those trips not for passenger carrying, e.g. emergency repair, bunkers, etc.
- (2) 根據海商法，公海的定義是指不屬於任何國家領海或內水的海域。
According to Maritime Law, High Seas is defined to be the waters lying outside the territorial waters of any countries.
- (3) 包括私人泊位和倉庫碼頭、船塢及葵青貨櫃碼頭。
Including private berths and wharves, docks, and Kwai Tsing Container Terminals.

資料來源： 海事處船隻航行監察中心
Data Source: Vessel Traffic Centre, Marine Department

表 12
TABLE 12

2012 年跨境客運碼頭的抵港及離港航次統計數字^{(1) (2)}

Statistics on Vessel Arrivals and Departures at Cross-boundary Ferry Terminals, 2012^{(1) (2)}

來往 From/To	運輸工具類別 Type of Carrier	提供服務的船舶/ 直升機數目 No. of Vessels/ Helicopters in Services		抵港 Arrivals				離港 Departures			
				航次 No. of Trips		淨註冊噸位(千噸) NRT ('000)		航次 No. of Trips		淨註冊噸位(千噸) NRT ('000)	
			(%)		(%)		(%)		(%)		(%)
澳門 Macau	雙體船 Catamaran	41	(-2.4)	40 900	(-10.8)	8 733	(-15.8)	41 865	(-9.4)	8 940	(-14.5)
	噴射飛翼船 Jetfoil	11	(0)	14 816	(+4.2)	1 446	(+4.3)	14 955	(+4.4)	1 460	(+4.4)
澳門 Macau	直升機 Helicopter	5	(0)	7 429	(-9.0)	-	(-)	7 429	(-9.0)	-	(-)
小計 - 澳門 Sub-total - Macau				63 145	(-7.5)	10 180	(-13.5)	64 249	(-6.5)	10 400	(-12.2)
高明 Gaoming	雙體船 Catamaran	2	(+100.0)	368	(0)	64	(^)	370	(+0.8)	65	(+0.9)
虎門 Humen	雙體船 Catamaran	4	(-33.3)	1 828	(+0.4)	283	(-0.8)	1 818	(+0.1)	281	(-1.1)
江門 Jiangmen	雙體船 Catamaran	2	(0)	390	(-12.6)	53	(-12.6)	395	(-13.0)	54	(-13.0)
蓮花山 Lianhuashan	雙體船 Catamaran	5	(+25.0)	1 840	(+0.4)	306	(-0.5)	1 821	(0)	303	(-0.8)
南沙 Nansha	雙體船 Catamaran	5	(0)	966	(-25.8)	181	(-25.3)	968	(-26.3)	181	(-25.8)
蛇口 Shekou	雙體船 Catamaran	17	(+21.4)	7 310	(+0.1)	909	(-2.1)	7 260	(-4.0)	902	(-6.7)
深圳 Shenzhen	雙體船 Catamaran	2	(-83.3)	1 460	(-39.7)	235	(-35.3)	1 454	(-39.9)	234	(-35.6)
順德 Shunde	雙體船 Catamaran	5	(+25.0)	2 141	(-3.1)	360	(-2.9)	2 180	(-2.0)	367	(-1.8)
中山 Zhongshan	雙體船 Catamaran	6	(0)	3 371	(+9.4)	572	(+9.1)	4 064	(+15.4)	690	(+15.1)
珠海 Zhuhai	雙體船 Catamaran	11	(0)	6 672	(+0.6)	1 104	(-0.3)	6 698	(+0.4)	1 108	(-0.5)
小計 - 內河港口 Sub-total - River Trade Ports				26 346	(-3.9)	4 068	(-4.4)	27 028	(-4.1)	4 185	(-4.4)
廈門 Xiamen	大船 Conventional Ferry	1	(0)	11	(0)	39	(0)	11	(0)	39	(0)
公海 Open Sea	大船 Conventional Ferry	1	(0)	587	(-0.8)	2 101	(-0.8)	587	(-0.8)	2 101	(-0.8)
小計 - 大船 Sub-total - Conventional Ferry				598	(-0.8)	2 141	(-0.8)	598	(-0.8)	2 141	(-0.8)
總計 Total				90 089	(-6.4)	16 388	(-9.8)	91 875	(-5.8)	16 726	(-9.0)

註釋： (1) 包括港澳碼頭、中國客運碼頭、屯門客運碼頭及海天客運碼頭的統計。

Notes: Including Macau Ferry Terminal, China Ferry Terminal, Tuen Mun Ferry Terminal and SkyPier.

(2) 數字不包括非載客的跨境渡輪船次。

Non-passenger carrying trips of cross-boundary ferry are excluded.

資料來源： 海事處客運碼頭組及香港國際機場客運碼頭服務有限公司

Data Source: Ferry Terminals Section, Marine Department and Hong Kong International Airport Ferry Terminal Services Ltd

表 13
TABLE 13

2012年按船舶類型分析香港過境船舶的船次⁽¹⁾
Number of Vessel Trips Transit Hong Kong⁽¹⁾ by Ship Type, 2012

船舶類型 Ship Type	過境船次 Vessel Trips Transit Hong Kong	變動百分率 Percentage Change	淨註冊噸位 (千噸) NRT ('000)	變動百分率 Percentage Change
全槽格式貨櫃船 Fully Cellular Container Vessel	12 460	-3.3%	378 729	+2.0%
拖船 Tug	1 243	+12.9%	938	+33.6%
普通貨船 Conventional Cargo Vessel	434	-4.0%	1 859	-24.2%
散裝乾貨船 Dry Bulk Carrier	331	-12.7%	7 631	-14.6%
液化氣體運載船 Gas Carrier/Tanker	113	-12.4%	3 211	-20.2%
化學品運載船 Chemical Carrier/Tanker	104	-14.8%	516	+4.0%
油輪 Oil Tanker	97	-32.6%	896	-41.2%
其他 Others	316	-24.6%	611	-32.8%
總計 Total	15 098	-3.4%	394 392	+1.0%

註釋： (1) 只包括曾提供到達前通知書的過境香港水域船舶的船次。

Note: Including only those vessel trips transit Hong Kong waters with Pre-arrival Notification.

資料來源： 海事處船隻航行監察中心

Data Source: Vessel Traffic Centre, Marine Department

表 14
TABLE 14

2012 年按跨境客運碼頭分析客運量
Passenger Throughput by Cross-boundary Ferry Terminal, 2012

千位 ('000)

來往 From/To	澳門 Macau	中國內地 Mainland China	公海 Open Sea	總計 Total
	(%)	(%)	(%)	(%)
海事處轄下客運碼頭 ⁽¹⁾ Marine Ferry Terminals ⁽¹⁾				
港澳碼頭 Macau Ferry Terminal	16 364 ⁽²⁾ (-0.9)	1 311 (+2.9)	- (-)	17 675 (-0.6)
中國客運碼頭 China Ferry Terminal	4 433 (+11.2)	3 432 (-1.9)	240 (+5.9)	8 106 (+5.1)
屯門客運碼頭 ⁽³⁾ Tuen Mun Ferry Terminal ⁽³⁾	219 (-) ⁽⁴⁾	- (-)	- (-)	219 (-) ⁽⁴⁾
海天客運碼頭 SkyPier	1 037 (+6.3)	1 559 (+9.7)	- (-)	2 596 (+8.3)
總計 Total	22 054 (+1.5)	6 302 (+1.7)	240 (+5.9)	28 596 (+1.6)

註釋： (1) 數字與入境事務處發布的統計數字並不相等，原因是入境事務處的數字包括毋須付船費的乘客（例如不足一歲者）。

Notes: Figures do not tally with those released by the Immigration Department because figures of the Immigration Department cover passengers who are not required to pay fares (e.g. passengers less than one year of age).

(2) 數字包括乘搭直升機來往澳門的乘客。
Helicopter passengers to and from Macau are included.

(3) 屯門客運碼頭已於二零一二年七月一日暫停運作。
The Tuen Mun Ferry Terminal temporarily ceased operation on 1 July 2012.

(4) 屯門至澳門新航線於二零一一年四月十五日啟航。
The new Tuen Mun-Macau route commenced operation on 15 April 2011.

資料來源： 海事處客運碼頭組及香港國際機場客運碼頭服務有限公司

Data Source: Ferry Terminals Section, Marine Department and Hong Kong International Airport Ferry Terminal Services Ltd

表 15
TABLE 15

2012 年按航線分析抵港及離港乘客人次
Passenger Arrivals and Departures by Route, 2012

I. 海事處轄下客運碼頭⁽¹⁾
Marine Ferry Terminals⁽¹⁾

來往 From/To	運輸工具類別 Type of Carrier	抵港乘客 Passenger Arrivals		離港乘客 Passenger Departures	
		乘客人次 (千位) Passengers ('000)	載客率 Passenger Load Factor	乘客人次 (千位) Passengers ('000)	載客率 Passenger Load Factor
		(%)	(%)	(%)	(%)
澳門 Macau	雙體船 Catamaran	7 020 (-2.6)	50.7% (+14.1)	9 239 (+2.9)	61.4% (+15.4)
	噴射飛翼船 Jetfoil	2 366 (+5.2)	66.5% (+1.0)	2 314 (+4.6)	64.5% (+0.2)
澳門 Macau	直升機 Helicopter	38 (-22.9)	42.4% (-15.3)	40 (-22.5)	44.8% (-14.8)
小計 – 澳門 Sub-total – Macau		9 424 (-0.9)	53.9% (+11.9)	11 593 (+3.1)	61.9% (+12.4)
高明 Gaoming	雙體船 Catamaran	83 (+19.9)	66.2% (+19.5)	79 (+12.6)	63.2% (+11.3)
江門 Jiangmen	雙體船 Catamaran	52 (-14.9)	37.6% (-2.7)	60 (-13.8)	42.4% (-0.9)
蓮花山 Lianhuashan	雙體船 Catamaran	294 (+0.8)	45.4% (+1.1)	273 (+0.6)	42.5% (+1.3)
南沙 Nansha	雙體船 Catamaran	80 (-16.8)	28.4% (+4.2)	86 (-13.9)	30.2% (+9.0)
蛇口 Shekou	雙體船 Catamaran	131 (+6.4)	21.9% (+16.5)	113 (-5.4)	18.9% (+16.6)
順德 Shunde	雙體船 Catamaran	353 (-5.6)	48.4% (-2.8)	346 (-6.0)	46.6% (-4.4)
中山 Zhongshan	雙體船 Catamaran	495 (-4.3)	52.0% (-2.4)	521 (-2.5)	48.0% (+1.6)
珠海 Zhuhai	雙體船 Catamaran	887 (+4.8)	49.7% (+4.1)	891 (+3.3)	49.7% (+2.8)
小計 – 內河港口 Sub-total – River Trade Ports		2 375 (-0.2)	45.2% (+3.2)	2 368 (-1.1)	43.8% (+4.2)
廈門 Xiamen	大船 Conventional Ferry	† (-48.6)	0.6% (-48.6)	† (-50.0)	0.6% (-50.0)
公海 Open Sea	大船 Conventional Ferry	120 (+5.9)	36.9% (+6.8)	120 (+5.8)	36.9% (+6.7)
小計 – 大船 Sub-total – Conventional Ferry		120 (+5.8)	36.2% (+6.7)	120 (+5.8)	36.2% (+6.7)
海事處轄下客運碼頭 Marine Ferry Terminals		11 919 (-0.7)	51.7% (+9.8)	14 081 (+2.4)	57.6% (+10.7)

註釋： (1) 包括港澳碼頭、中國客運碼頭及屯門客運碼頭。

Note: Including Macau Ferry Terminal, China Ferry Terminal and Tuen Mun Ferry Terminal.

表 15 - 續
TABLE 15 - Cont'd

II. 海天客運碼頭
SkyPier

來往 From/To	運輸工具類別 Type of Carrier	抵港乘客 Passenger Arrivals		離港乘客 Passenger Departures	
		乘客人次 (千位) Passengers ('000)	載客率 Passenger Load Factor	乘客人次 (千位) Passengers ('000)	載客率 Passenger Load Factor
		(%)	(%)	(%)	(%)
澳門 Macau	雙體船 Catamaran	721 (+8.6)	36.4% (+28.5)	316 (+1.4)	27.5% (+62.4)
小計 - 澳門 Sub-total - Macau		721 (+8.6)	36.4% (+28.5)	316 (+1.4)	27.5% (+62.4)
虎門 Humen	雙體船 Catamaran	231 (+7.0)	40.9% (+5.6)	92 (-7.0)	16.4% (-7.9)
南沙 Nansha	雙體船 Catamaran	15 (-20.0)	19.6% (+35.6)	4 (-42.8)	5.1% (-2.9)
蛇口 Shekou	雙體船 Catamaran	638 (+22.3)	49.0% (+19.9)	186 (+12.7)	14.4% (+9.8)
深圳 Shenzhen	雙體船 Catamaran	122 (-14.0)	24.9% (+35.7)	50 (-37.4)	10.2% (-0.8)
中山 Zhongshan	雙體船 Catamaran	45 (+48.5)	18.1% (-22.0)	32 (+75.2)	8.8% (-37.8)
珠海 Zhuhai	雙體船 Catamaran	84 (+21.7)	17.6% (+24.2)	59 (+9.3)	12.3% (+11.5)
小計 - 內河港口 Sub-total - River Trade Ports		1 136 (+13.8)	35.9% (+20.8)	423 (^)	13.0% (+2.3)
海天客運碼頭 SkyPier		1 856 (+11.7)	36.1% (+23.8)	739 (+0.6)	16.8% (+18.1)

資料來源： 海事處客運碼頭組及香港國際機場客運碼頭服務有限公司

Data Source: Ferry Terminals Section, Marine Department and Hong Kong International Airport Ferry Terminal Services Ltd

表16
TABLE 16

2012年按主要貨物裝卸地點分析貨櫃吞吐量
Container Throughput by Main Cargo Handling Location, 2012

千個標準貨櫃單位
'000 TEUs

類別 Category	貨櫃碼頭 Container Terminals			貨櫃碼頭以外 Other than Container Terminals			總計 Total
	遠洋 Ocean	內河 River	小計 Sub-total	遠洋 Ocean	內河 River	小計 Sub-total	
裝上 Loaded	(%)	(%)	(%)	(%)	(%)	(%)	(%)
載貨貨櫃 Laden Container	7 013 (-0.1)	902 (+1.6)	7 915 (+0.1)	558 (-44.0)	1 356 (-9.5)	1 913 (-23.3)	9 828 (-5.5)
空貨櫃 Empty Container	506 (-2.6)	241 (-5.0)	746 (-3.4)	14 (-46.5)	822 (-7.5)	836 (-8.6)	1 582 (-6.2)
小計 Sub-total	7 518 (-0.3)	1 143 (+0.1)	8 662 (-0.2)	571 (-44.1)	2 178 (-8.8)	2 749 (-19.4)	11 411 (-5.6)
卸下 Discharged							
載貨貨櫃 Laden Container	6 373 (+2.3)	1 079 (-6.4)	7 452 (+1.0)	906 (-30.0)	1 466 (-9.4)	2 372 (-18.6)	9 824 (-4.6)
空貨櫃 Empty Container	1 310 (+0.4)	52 (+4.8)	1 362 (+0.5)	10 (-66.7)	510 (-17.1)	521 (-19.4)	1 882 (-5.9)
小計 Sub-total	7 683 (+2.0)	1 131 (-5.9)	8 814 (+0.9)	916 (-30.9)	1 977 (-11.5)	2 893 (-18.7)	11 707 (-4.8)
合計 Overall							
載貨貨櫃 Laden Container	13 386 (+1.0)	1 981 (-2.9)	15 367 (+0.5)	1 464 (-36.1)	2 822 (-9.5)	4 286 (-20.8)	19 653 (-5.0)
空貨櫃 Empty Container	1 816 (-0.5)	293 (-3.4)	2 108 (-0.9)	24 (-57.5)	1 332 (-11.4)	1 356 (-13.1)	3 465 (-6.0)
總計 Total	15 202 (+0.9)	2 274 (-3.0)	17 475 (+0.3)	1 487 (-36.6)	4 154 (-10.1)	5 642 (-19.0)	23 117 (-5.2)

表 17
TABLE 17

2012 年按貨櫃碼頭以外的主要貨物裝卸地點分析裝卸的貨櫃
Containers Discharged/Loaded at Main Cargo Handling Locations Other than Container Terminals, 2012

千個標準貨櫃單位
'000 TEUs

主要貨物裝卸地點 (貨櫃碼頭以外) Main Cargo Handling Location (Other than Container Terminals)	遠洋 Ocean				內河 River				總計 Total	
	卸下 Discharged		裝上 Loaded		卸下 Discharged		裝上 Loaded			
	載貨貨櫃 Laden	空貨櫃 Empty	載貨貨櫃 Laden	空貨櫃 Empty	載貨貨櫃 Laden	空貨櫃 Empty	載貨貨櫃 Laden	空貨櫃 Empty	載貨貨櫃 Laden	空貨櫃 Empty
泊位和倉庫碼頭 Berths and Wharves	(%) 89 (-8.9)	(%) † (-92.3)	(%) 83 (-27.8)	(%) † (-99.3)	(%) 1 208 (-6.9)	(%) 489 (-16.8)	(%) 1 215 (-6.0)	(%) 685 (-2.7)	(%) 2 595 (-7.4)	(%) 1 174 (-9.9)
碇泊處 Anchorages	816 (-31.8)	10 (-61.4)	474 (-46.2)	14 (-29.0)	258 (-19.4)	22 (-22.0)	140 (-32.0)	137 (-25.7)	1 689 (-35.2)	182 (-29.1)
浮泡 Buoys	1 (-)	0 (-)	1 (※)	0 (-)	† (-59.9)	0 (-)	† (-)	0 (-)	2 (+68.0)	0 (-)
總計 Total	906 (-30.0)	10 (-66.7)	558 (-44.0)	14 (-46.5)	1 466 (-9.4)	510 (-17.1)	1 356 (-9.5)	822 (-7.5)	4 286 (-20.8)	1 356 (-13.1)

表 18
TABLE 18

2012 年按貨物種類及運輸方式劃分的裝卸港口貨物
Port Cargo Discharged/Loaded by Cargo Type and Mode of Transport, 2012

千公噸
'000 Tonnes

貨物種類 Cargo Type	海運 Seaborne		河運 River		水運總計 Waterborne Total	
	卸下 Discharged	裝上 Loaded	卸下 Discharged	裝上 Loaded	卸下 Discharged	裝上 Loaded
	(%)	(%)	(%)	(%)	(%)	(%)
包裝散貨 Break bulk cargo	6 314 (+4.7)	478 (-40.3)	1 860 (-21.9)	3 377 (-9.6)	8 174 (-2.8)	3 855 (-15.1)
貨櫃貨物 Containerised cargo	81 802 (-2.1)	70 129 (-4.1)	24 451 (-4.2)	27 582 (-3.0)	106 253 (-2.6)	97 711 (-3.8)
無包裝液態散貨 Unpacked liquid bulk cargo	16 739 (+2.2)	401 (+101.5)	259 (-57.5)	321 (+63.8)	16 998 (^)	723 (+83.0)
無包裝固態散貨 Unpacked solid bulk cargo	12 594 (-11.3)	403 (-36.6)	10 680 (+16.9)	11 892 (-4.9)	23 275 (-0.3)	12 294 (-6.4)
總計 Total	117 448 (-2.3)	71 412 (-4.5)	37 251 (-1.1)	43 172 (-3.8)	154 699 (-2.0)	114 583 (-4.2)

資料來源： 政府統計處船隻及貨運統計組
Data Source: Shipping and Cargo Statistics Section, Census and Statistics Department

表 19
TABLE 19

海港繫泊浮泡統計數字
Harbour Mooring Buoys Statistics

A. 浮泡數目 (年底數字) Number of Buoys (Figures as at End of the Year)	2011	2012
"A 級" 繫泊浮泡數目 No. of "A Class" mooring buoys	13	13
"B 級" 繫泊浮泡數目 No. of "B Class" mooring buoys	4	4

B. 使用情況 Usage	2011	2012
"A 級" 浮泡訂用日數 Days booked for "A Class" buoys	1 151	1 639
"B 級" 浮泡訂用日數 Days booked for "B Class" buoys	297	139
"A 級" 浮泡訂用百分率 Percentage of "A Class" buoys used based on booking	24.9%	37.1%
"B 級" 浮泡訂用百分率 Percentage of "B Class" buoys used based on booking	20.8%	9.6%
上述數字只顯示訂用情況，實際使用率則如下： Whilst the above figures are indicative of booking usage, the actual physical occupancy rates are as follows:		
"A 級" 浮泡 "A Class" buoys	16.6%	26.7%
"B 級" 浮泡 "B Class" buoys	15.7%	9.1%

C. 浮泡保養 Buoys Maintenance	2011	2012
按期保養的燈浮標 Light Buoys maintained	115	111
按期保養的養魚區浮泡 Mariculture Buoys maintained	178	178
按期保養的小型繫泊浮泡 Minor Mooring maintained	168	166
按期保養的大型繫泊浮泡 Major Mooring maintained	39	39
按期保養的 "A 級" 海港繫泊浮泡 "A Class" Harbour Mooring maintained	13	13
按期保養的 "B 級" 海港繫泊浮泡 "B Class" Harbour Mooring maintained	4	4

資料來源： (A) & (B) 海事處船隻航行監察中心
Data Sources: Vessel Traffic Centre, Marine Department

(C) 海事處港口後勤組
Port Logistics Section, Marine Department

表 20
TABLE 20

2012 年按分布地點分析香港私用繫泡數目
Number of Private Moorings Laid in Hong Kong by Location, 2012

分布地點	Location	私用繫泡數目 Number of Private Moorings
香港仔南避風塘及銅鑼灣避風塘 Aberdeen South Typhoon Shelter and Causeway Bay Typhoon Shelter		
香港仔南避風塘 (白沙灣)	Aberdeen South Typhoon Shelter (Pak Sha Wan)	1
香港仔南避風塘 (布廠灣)	Aberdeen South Typhoon Shelter (Po Chong Wan)	448
銅鑼灣避風塘	Causeway Bay Typhoon Shelter	186
小計	Sub-total	635
在所有其他避風塘及維多利亞港口界限以內的其他地方 Other Typhoon Shelters and Elsewhere within the Limits of Victoria Port		
長洲避風塘	Cheung Chau Typhoon Shelter	11
荔枝角	Lai Chi Kok	3
新油麻地避風塘	New Yau Ma Tei Typhoon Shelter	16
新油麻地避風塘 (海堤對開海面)	New Yau Ma Tei Typhoon Shelter (Outside Breakwater)	33
油麻地碇泊處以北海面	North of Yau Ma Tei Anchorage	1
藍巴勒海峽避風塘 (海堤對開海面)	Rambler Channel Typhoon Shelter (Outside Breakwater)	6
三家村避風塘	Sam Ka Tsuen Typhoon Shelter	1
汀九	Ting Kau	63
土瓜灣	To Kwa Wan	4
青衣以北海面	Tsing Yi North	4
荃灣	Tsuen Wan	91
屯門避風塘	Tuen Mun Typhoon Shelter	7
小計	Sub-total	240

表 20 – 續
TABLE 20 – Cont'd

分布地點	Location	私用繫泡數目 Number of Private Moorings
在香港水域內的其他地方 Elsewhere in the Waters of Hong Kong		
香港仔西避風塘 (海堤對開海面)	Aberdeen West Typhoon Shelter (Outside Breakwater)	16
大灘海峽 赤徑口	Chek Keng Hau, Long Harbour	1
大嶼山 長沙欄	Cheung Sha Lan, Lantau Island	33
大嶼山 愉景灣	Discovery Bay, Lantau Island	6
南丫島 下尾灣 (電力站對開海面)	Ha Mei Wan, Lamma Island (Off Power Station)	6
西貢 白沙灣	Hebe Haven, Sai Kung	680
將軍澳	Junk Bay	1
西貢 滘西洲	Kau Sai Chau, Sai Kung	4
大灘海峽 高塘口灣	Ko Tong Hau, Long Harbour	1
南丫島 鹿洲灣	Luk Chau Wan, Lamma Island	1
熨波洲	Middle Island	88
大嶼山 稔樹灣	Nim Shue Wan, Lantau Island	15
北大嶼山	North Lantau	1
大埔 船灣海	Shuen Wan Hoi, Tai Po	3
赤柱正灘	Stanley Main Beach	4
大欖	Tai Lam	3
大埔 大美督	Tai Mei Tuk, Tai Po	34
西貢 大網仔	Tai Mong Tsai, Sai Kung	7
西貢 大網仔 (阿公灣)	Tai Mong Tsai, Sai Kung (A Kung Wan)	3
大潭港	Tai Tam Harbour	48
西貢 斬竹灣	Tsam Chuk Wan, Sai Kung	10
青衣以西海面	Tsing Yi West	3
西貢 早禾坑	Tso Wo Hang, Sai Kung	18
屯門避風塘 (海堤對開海面)	Tuen Mun Typhoon Shelter (Outside Breakwater)	6
黃竹角海 往灣	Wong Wan, Wong Chuk Kok Hoi	2
南丫島 榕樹灣	Yung Shue Wan, Lamma Island	2
小計	Sub-total	996
總計	Total	1 871

資料來源： 海事處私用繫泡分組
Data Source: Private Mooring Sub-unit, Marine Department

表 21
TABLE 21

碇泊處一覽 (截至 2012 年年底)
List of Anchorages (as at year end 2012)

碇泊處 Anchorages	面積 (公頃) Area (hectares)
A. 檢疫及入境船隻碇泊處 Quarantine and Immigration Anchorages	
1. 東面檢疫及入境船隻碇泊處 Eastern Quarantine and Immigration Anchorage	35.1
2. 屯門入境船隻碇泊處 Tuen Mun Immigration Anchorage	89.9
3. 西面檢疫及入境船隻碇泊處 Western Quarantine and Immigration Anchorage	121.1
小計 Sub-total	246.1
B. 危險品碇泊處 Dangerous Goods Anchorages	
1. 將軍澳危險品碇泊處 Junk Bay Dangerous Goods Anchorage	28.9
2. 交椅洲危險品碇泊處 Kau Yi Chau Dangerous Goods Anchorage	288.2
3. 大鵬灣危險品碇泊處 Mirs Bay Dangerous Goods Anchorage	316.5
4. 糧船灣海危險品碇泊處 Rocky Harbour Dangerous Goods Anchorage	26.9
5. 南丫島南危險品碇泊處 South Lamma Dangerous Goods Anchorage	228.5
6. 荃灣危險品碇泊處 Tsuen Wan Dangerous Goods Anchorage	61.9
7. 西面危險品碇泊處 Western Dangerous Goods Anchorage	220.8
8. 危險品留用碇泊處 Reserved Dangerous Goods Anchorage	37.3
小計 Sub-total	1 209.0
C. 維修碇泊處 Servicing Anchorages	
1. 奇力 1 號碇泊處 Kellett Anchorage No.1	74.7
2. 奇力 2 號碇泊處 Kellett Anchorage No.2	230.4
3. 奇力 3 號碇泊處 Kellett Anchorage No.3	102.8
4. 馬灣碇泊處 Ma Wan Anchorage	138.4
5. 南丫島北碇泊處 North Lamma Anchorage	375.1
6. 南丫島西北碇泊處 North West Lamma Anchorage	553.9
7. 半山石碇泊處 Pun Shan Shek Anchorage	352.1
8. 深水角 1 號碇泊處 Sham Shui Kok Anchorage No.1	72.6
9. 深水角 2 號碇泊處 Sham Shui Kok Anchorage No.2	35.6
10. 西面 1 號碇泊處 Western Anchorage No.1	310.6
11. 西面 2 號碇泊處 Western Anchorage No.2	278.7
12. 西面 3 號碇泊處 Western Anchorage No.3	272.4
13. 油麻地碇泊處 Yau Ma Tei Anchorage	105.0
小計 Sub-total	2 902.3

表 21 – 續
TABLE 21 – Cont'd

碇泊處 Anchorages		面積 (公頃) Area (hectares)
D. 領航特別碇泊處 Pilotage Special Anchorages		
1. 南丫島東南碇泊處	South East Lamma Anchorage	285.5
2. 南丫島西南碇泊處	South West Lamma Anchorage	228.4
3. 龍鼓水道碇泊處	Urmston Road Anchorage	190.0
小計	Sub-total	703.9
E. 遮蔽碇泊處 Sheltered Anchorages		
1. 柴灣貨物裝卸灣	Chai Wan Cargo Basin	11.2
2. 吉澳	Kat O	1.6
3. 沙頭角	Sha Tau Kok	0.6
4. 大澳	Tai O	4.0
5. 荃灣	Tsuen Wan	3.7
6. 熨波洲	Middle Island	6.9
7. 白沙灣	Pak Sha Wan (Hebe Haven)	84.0
8. 西貢	Sai Kung	4.3
9. 聖士提反灣	St. Stephen's Bay	1.3
10. 大美督	Tai Mei Tuk	12.3
11. 大潭港	Tai Tam Harbour	5.7
12. 汀九	Ting Kau	0.7
13. 斬竹灣	Tsam Chuk Wan (Jade Bay)	7.5
小計	Sub-total	143.8
總計	Total	5 205.1

資料來源： 海事處策劃、發展協調及港口保安部

Data Source: Planning, Development & Port Security Branch, Marine Department

表 22
TABLE 22

避風塘一覽 (截至 2012 年年底)
List of Typhoon Shelters (as at year end 2012)

避風塘	Typhoon Shelters	面積 (公頃) Area (hectares)
1. 南香港仔避風塘	Aberdeen South Typhoon Shelter	26.1
2. 西香港仔避風塘	Aberdeen West Typhoon Shelter	34.2
3. 銅鑼灣避風塘	Causeway Bay Typhoon Shelter	10.6
4. 長洲避風塘	Cheung Chau Typhoon Shelter	50.0
5. 喜靈洲避風塘	Hei Ling Chau Typhoon Shelter	76.6
6. 觀塘避風塘	Kwun Tong Typhoon Shelter	33.8
7. 新油麻地避風塘	New Yau Ma Tei Typhoon Shelter	64.6
8. 藍巴勒海峽避風塘	Rambler Channel Typhoon Shelter	12.9
9. 三家村避風塘	Sam Ka Tsuen Typhoon Shelter	1.9
10. 筲箕灣避風塘	Shau Kei Wan Typhoon Shelter	17.2
11. 船灣避風塘	Shuen Wan Typhoon Shelter	10.3
12. 土瓜灣避風塘	To Kwa Wan Typhoon Shelter	14.8
13. 屯門避風塘	Tuen Mun Typhoon Shelter	56.8
14. 鹽田仔避風塘	Yim Tin Tsai Typhoon Shelter	9.2
總計	Total	419.0

備註： 只包括於二零零七年一月二日在政府憲報 (編號: L.N. 285/2006) 中所公布的避風塘。
Remark: Including only those typhoon shelters promulgated in the Government Gazette (L.N. 285 of 2006) on 2.1.2007.

資料來源： 海事處策劃、發展協調及港口保安部
Data Source: Planning, Development & Port Security Branch, Marine Department

表 23
TABLE 23

公眾貨物裝卸區一覽 (截至 2012 年年底)
List of Public Cargo Working Areas (as at year end 2012)

公眾貨物裝卸區 Public Cargo Working Area	面積 (公頃) Area (hectares)	符合發牌條件之 停泊位長度 (米) Licensable Seafrontage (metres)
1. 柴灣公眾貨物裝卸區 Chai Wan Public Cargo Working Area	2.1	548
2. 新油麻地公眾貨物裝卸區 New Yau Ma Tei Public Cargo Working Area	6.8	1 212
3. 藍巴勒海峽公眾貨物裝卸區 Rambler Channel Public Cargo Working Area	4.1	1 040
4. 昂船洲公眾貨物裝卸區 Stonecutters Island Public Cargo Working Area	3.6	640
5. 屯門公眾貨物裝卸區 Tuen Mun Public Cargo Working Area	3.3	616
6. 西區公眾貨物裝卸區 Western District Public Cargo Working Area	3.3	880
總計 Total	23.2	4 936

資料來源： 海事處貨物裝卸組
Data Source: Cargo Handling Section, Marine Department

表 24
TABLE 24

垃圾收集、油污和檢控個案統計數字
Refuse Collection, Oil Pollution and Prosecution Statistics

A. 垃圾收集和油污事故
Refuse Collection and Oil Pollution Incident

	2011	2012
1. 從海港收集的垃圾 (公噸) Refuse collected from harbour (tonnes)	11 100	10 996
2. 從船舶收集的垃圾 (公噸) Refuse collected from vessel (tonnes)	4 299	4 351
3. 接報的疑似油污事故 (宗) Alleged oil pollution incidents reported (cases)	158	136

B. 檢控統計數字
Prosecution Statistics

罪行 Offence	陳詞／聆訊個案 No. of Cases Heard		定罪個案 No. of Cases Convicted		罰款 Fine (HK\$)	
	2011	2012	2011	2012	2011	2012
1. 違反碰撞規例 Breach of Collision Regulations	33	25	31	25	34,300	63,500
2. 船上沒有合格船長／輪機員 No qualified master/engineer on board	189	268	165	259	109,450	199,800
3. 違反牌照／准許證條件 Breach of licence/permit conditions	83	95	79	93	70,000	84,500
4. 未經允許進入機場入口區域 Entered into airport approach area without permission	5	5	5	5	3,700	4,000
5. 靠泊於已展示禁止船隻靠泊告示的岸壁／登岸梯級 Lying alongside seawall/landing steps prohibited by Notice	9	21	8	21	6,950	13,900
6. 船隻未有領牌／並無有效牌照 Vessel was not licensed/did not have a valid licence	119	227	112	225	102,150	285,750
7. 未獲允許運載乘客／超額運載乘客 Carrying passengers without permission/excessive passengers	48	57	47	57	26,900	37,000
8. 沒有陳示有效的驗船／保險證明書 Failing to display valid certificate of survey/insurance	8	9	8	9	4,300	6,500
9. 超速行駛 Steaming in excessive speed	43	36	43	36	30,300	33,750
10. 海上拋置廢物 Marine littering	0	0	0	0	0	0
11. 海上拋置廢物 (定額罰款) ⁽¹⁾ Marine littering (Fixed Penalty Notice) ⁽¹⁾	20	3	16	3	29,400	4,500
12. 在公共渡輪上吸煙 Smoking on board public ferry	0	0	0	0	0	0
13. 排放黑煙 Emission of black smoke	0	3	0	3	0	4,000
14. 其他海事罪行 Other marine offences	471	630	466	626	386,350	808,980
總計 Total	1 028	1 379	980	1 362	803,800	1,546,180

註釋： (1) 二零一一年有四個申請法庭命令個案，總共涉及 \$5,400 附加罰款。

Note: There were 4 court orders applied in 2011, with a total of \$5,400 additional penalty imposed.

資料來源： (A) 海事處港口後勤組
(B) 海事處檢控小組

Data Sources: (A) Port Logistics Section, Marine Department
(B) Prosecution Unit, Marine Department

表 25
TABLE 25

按噸位等級分析香港持牌船隻 (截至 2012 年年底)
Hong Kong Licensed Vessels by Tonnage Classification (as at year end 2012)

船隻類型 Vessel Type		60 淨噸及以下 60 Net Tons and Below	61 至 300 淨噸 61 - 300 Net Tons	300 淨噸以上 Over 300 Net Tons	總計 Total
第 I 類 Class I	(a) 渡輪船隻 Ferry Vessel	11	30	9	50
	(b) 水上食肆 Floating Restaurant	0	0	2	2
	(c) 小輪 Launch	187	49	1	237
	(d) 多用途船隻 Multi-purposes Vessel	10	5	2	17
	(e) 原始船隻 Primitive Vessel	68	1	0	69
	(f) 固定船隻 Stationary Vessel	0	0	0	0
	小計 Sub-total	276	85	14	375
第 II 類 Class II	(a) 起重機躉船 Crane Barge	1	1	5	7
	(b) 危險品運輸船 Dangerous Goods Carrier	1	10	19	30
	(c) 挖泥船 Dredger	0	1	0	1
	(d) 乾貨貨船 Dry Cargo Vessel	46	59	10	115
	(e) 非自航駁船 Dumb Lighter	5	40	435	480
	(f) 食油運輸船 Edible Oil Carrier	0	0	16	16
	(g) 平面工作躉 Flat-top Work Barge	17	26	30	73
	(h) 浮塢 Floating Dock	0	0	3	3
	(i) 水上工場 Floating Workshop	0	1	0	1
	(j) 開底躉船 Hopper Barge	0	0	28	28
	(k) 登岸平台 Landing Platform	40	1	0	41
	(l) 登岸浮躉 Landing Pontoon	6	25	14	45
	(m) 有毒液體物質運輸船 Noxious Liquid Substance Carrier	0	0	3	3
	(n) 石油運輸船 Oil Carrier	23	103	47	173
	(o) 領港船 Pilot Boat	21	0	0	21

表 25 – 續
TABLE 25 – Cont'd

船隻類型 Vessel Type		60 淨噸及以下 60 Net Tons and Below	61 至 300 淨噸 61 - 300 Net Tons	300 淨噸以上 Over 300 Net Tons	總計 Total
第 II 類 Class II (續) (Cont'd)	(p) 特別用途船隻 Special Purpose Vessel	5	1	1	7
	(q) 固定船隻 Stationary Vessel	109	29	5	143
	(r) 交通船 Transportation Boat	27	0	0	27
	(s) 交通舢舨 Transportation Sampan	84	0	0	84
	(t) 拖船 Tug	67	101	0	168
	(u) 供水船 Water Boat	14	6	0	20
	(v) 工作船 Work Boat	286	13	0	299
	小計 Sub-total	752	417	616	1 785
第 III 類 Class III	(a) 運魚船 Fish Carrier	9	8	0	17
	(b) 漁船舢舨 Fishing Sampan	1 184	0	0	1 184
	(c) 漁船 Fishing Vessel	677	1 489	0	2 166
	(d) 舷外機開敞式舢舨 Outboard Open Sampan	2 835	0	0	2 835
	小計 Sub-total	4 705	1 497	0	6 202
第 IV 類 Class IV	(a) 機械輔助帆船 Auxiliary Powered Yacht	N.A.	N.A.	N.A.	725
	(b) 遊樂船 Cruiser	N.A.	N.A.	N.A.	2 326
	(c) 開敞式遊樂船 Open Cruiser	N.A.	N.A.	N.A.	4 869
	小計 Sub-total	N.A.	N.A.	N.A.	7 920
住家船隻 ⁽¹⁾ Dwelling Vessel ⁽¹⁾	N.A.	N.A.	N.A.	4	
總計 Total	5 733⁽²⁾	1 999⁽²⁾	630⁽²⁾	16 286⁽³⁾	

註釋： (1) 全部在銅鑼灣避風塘。
Notes: All in Causeway Bay Typhoon Shelter.

資料來源： 海事處牌照及關務組
Data Source: Licensing and Port Formalities Section, Marine Department

(2) 不包括第 IV 類持牌船隻及住家船隻的噸位數字。
Not including tonnage of Class IV licensed vessels and dwelling vessels.

(3) 已包括 26 艘閒置船隻。
Including 26 laid-up vessels.

表 26
TABLE 26

船舶安全監督統計數字
Ship Safety Statistics

A. 貨船安全統計數字 Cargo Ships Safety Statistics	2011	2012
海事處註冊貨船品質審查／檢驗 Hong Kong Registered Cargo Ships Quality Checked/Inspected <ol style="list-style-type: none"> <li data-bbox="86 412 1166 477">1. 品質審查的註冊貨船數目 No. of quality checks on Hong Kong registered cargo ships <li data-bbox="86 483 1166 548">2. 品質檢驗和稽核貨船數目 No. of flag state quality control ship inspections and company visits <li data-bbox="86 555 1166 620">3. 審核船體、機械和設備圖則數目 No. of plans examined in respect of hull, machinery and equipment 	<p style="text-align: center;">1 714</p> <p style="text-align: center;">83</p> <p style="text-align: center;">464</p>	<p style="text-align: center;">1 970</p> <p style="text-align: center;">96</p> <p style="text-align: center;">342</p>
貨船設備安全證明書 Cargo Ship Safety Equipment Certificate (SEC) <ol style="list-style-type: none"> <li data-bbox="86 707 1166 772">1. 所簽發的豁免證明書數目 No. of exemption certificates issued <li data-bbox="86 779 1166 844">2. 應其他國家機關要求而檢驗的外來船舶，以簽發設備安全證明書 Foreign ships surveyed at the request of other national authorities for the issue of SEC 	<p style="text-align: center;">122</p> <p style="text-align: center;">0</p>	<p style="text-align: center;">130</p> <p style="text-align: center;">0</p>
貨船無線電安全證明書 Cargo Ship Safety Radio Certificate (SRC) <ol style="list-style-type: none"> <li data-bbox="86 934 1166 999">1. 所簽發的豁免證明書數目 No. of exemption certificates issued <li data-bbox="86 1005 1166 1070">2. 應其他國家機關要求而檢驗的外來船舶，以簽發無線電安全證明書 Foreign ships surveyed at the request of other national authorities for the issue of SRC 	<p style="text-align: center;">0</p> <p style="text-align: center;">0</p>	<p style="text-align: center;">0</p> <p style="text-align: center;">0</p>
其他 Others <ol style="list-style-type: none"> <li data-bbox="86 1158 1166 1249">1. 所簽發的《海員培訓、發證和值班標準國際公約》最低安全配員證明書 Standards of Training, Certification and Watchkeeping Minimum Safe Manning Certificate issued <li data-bbox="86 1256 1166 1348">2. 對構造安全、設備安全、無線電安全證明書的監察，包括中期檢驗 Safety Construction, Equipment and Radio Certificates monitored (including intermediate surveys) <li data-bbox="86 1355 1166 1420">3. 對國際載重線證明書的監察，包括定期檢驗 International Load Line Certificate monitored (including periodic surveys) <li data-bbox="86 1426 1166 1619">4. 對國際防止油污證明書、油污損害民事責任保險證明書或其他保證證明書及燃油污染損害民事責任保險證明書或其他經濟擔保證明書的監察 – 續期、年度/中期檢驗 International Oil Pollution Prevention (IOPP) Certificate, Certificate of Insurance or Other Financial Security in Respect of Civil Liability for Oil Pollution Damage and Certificate of Insurance or Other Financial Security in Respect of Civil Liability for Bunker Oil Pollution Damage monitored (including renewal, annual/intermediate surveys) <li data-bbox="86 1626 1166 1691">5. 對新船公司所作的國際安全管理稽核 International Safety Management (ISM) audits of new shipping companies <li data-bbox="86 1697 1166 1762">6. 其他檢驗 (例如合格證明書等) Other surveys (e.g. Certificates of Fitness etc.) 	<p style="text-align: center;">470</p> <p style="text-align: center;">3 233</p> <p style="text-align: center;">524</p> <p style="text-align: center;">2 997</p> <p style="text-align: center;">39</p> <p style="text-align: center;">0</p>	<p style="text-align: center;">528</p> <p style="text-align: center;">3 682</p> <p style="text-align: center;">599</p> <p style="text-align: center;">3 135</p> <p style="text-align: center;">24</p> <p style="text-align: center;">0</p>

表 26 – 續
TABLE 26 – Cont'd

B. 客船安全統計數字 Passenger Ships Safety Statistics	2011	2012
乘客定額及船舶安全證明書 Passenger and Ship Safety Certificates		
1. 客船安全證明書 – 國際航線 Passenger Ship Safety Certificate (PSSC) – International Voyage	0	0
2. 客船安全證明書／高速船安全證明書 – 內河航限 PSSC/High Speed Craft Safety Certificate (HSCSC) – River Trade Limits	PSSC-1/ HSCSC-72	PSSC-7/ HSCSC-61
3. 延長客船安全證明書有效期 Extensions to PSSC	3	7
4. 客船安全證明書檢驗船舶總數 Total no. of vessels surveyed for PSSC	73	68
5. 受檢驗的客船無線電裝置 Passenger ship radio installations surveyed	73	68
6. 所簽發的載重線證明書數目 No. of Load Line Certificates issued	6	14
7. 所簽發的載重線豁免證明書數目 No. of Load Line Exemption Certificates issued	8	14
8. 所簽發的國際防止油污證明書及增補數目 No. of IOPP Certificates with Supplement issued	8	15
9. 所簽發的國際防止油污豁免證明書數目 No. of IOPP Exemption Certificates issued	0	0
10. 所簽發的最低安全配員證明書數目 No. of Minimum Safe Manning Certificates issued	13	5
11. 對船公司所作的國際安全管理稽核 ISM audits of shipping companies	6	6
12. 對船舶所作的國際安全管理稽核 ISM audits of ships	22	21
13. 所簽發的國際安全管理稽核符合證明數目 No. of ISM Document of Compliance issued	2	2
14. 所簽發的國際安全管理稽核安全管理證明書數目 No. of ISM Safety Management Certificates issued	16	13
15. 所簽發的臨時國際安全管理稽核安全管理證明書數目 No. of Interim ISM Safety Management Certificates issued	7	4
雜項檢查，圖則審核和設備 Miscellaneous Inspection, Plans Approval and Equipment		
1. 審核客船船體、機械和設備圖則數目 No. of plans examined for hull, machinery and equipment of passenger ships	155	137
2. 簽發檢查證明書、雜項檢驗／檢查數目 No. of certificates of inspection issued, miscellaneous surveys/inspections	88	104

表 26 – 續
TABLE 26 – Cont'd

C. 港口國監督統計數字 Port State Control Statistics	2011	2012
<p>在香港特別行政區港口內進行的港口國監督檢查： Port State Control Inspections in the Harbour of the Hong Kong Special Administrative Region:</p>		
<p>1. 在履行身為港口國監督委員而對《東京諒解備忘錄》應有的責任下，受港口國監督檢查的個別外來船舶數目 No. of individual foreign ships inspected under the obligation to Tokyo Memorandum of Understanding (MOU), as a member Port State of the Committee</p>	854 *	869
<p>– 遠洋船舶 <i>ocean vessels</i></p>	746	743
<p>– 沿岸船舶 <i>coastal vessels</i></p>	108 *	126
<p>2. 對外來船舶進行港口國監督檢查 (包括複檢) 總數 Total no. of Port State Control inspections carried out for foreign ships, including re-inspections</p>	886 *	927
<p>3. 被扣留在港的低於安全標準的船舶數目 No. of sub-standard ships detained in Hong Kong</p>	39	52

資料來源： (A) 海事處貨船安全組
Data Sources: Cargo Ships Safety Section, Marine Department

(B) 海事處客船安全組
Passenger Ships Safety Section, Marine Department

(C) 海事處港口國監督組
Port State Control Section, Marine Department

表 27
TABLE 27

本地船隻安全／海事工業安全／海事意外統計數字
Local Vessels Safety/Marine Industrial Safety/Marine Accidents Statistics

I. 船舶的檢驗和檢查統計 Statistics on Surveys and Inspections of Vessels	2011	2012
A. 給本地船隻簽發／批註的證明書／適合聲明／紀錄等 Certificates/Declarations/Records etc. Issued/Endorsed to Local Vessels <ol style="list-style-type: none"> 1. 簽發／批註乾舷勘定證明書數目 No. of Freeboard Assignment Certificates issued/endorsed 2. 簽發安全設備檢驗紀錄數目 No. of Survey Records of Safety Equipment issued 3. 簽發／批註載重線證明書數目 No. of Load Line Certificates issued/endorsed 4. 簽發噸位丈量記錄數目 No. of Records of Tonnage Measurement issued 5. 簽發／批註散裝有毒液體物質的防污證明書數目 No. of Pollution Prevention Certificates for the Carriage of Noxious Liquid Substances in Bulk issued/endorsed 6. 簽發適合運載危險品聲明數目 No. of Declarations of Fitness for the Carriage of Dangerous Goods issued 7. 簽發香港防止油類污染證明書數目 No. of Hong Kong Oil Pollution Prevention Certificates issued 8. 簽發／批註香港防止空氣污染證明書數目 No. of Hong Kong Air Pollution Prevention Certificates issued/endorsed 9. 給本地船隻簽發驗船證明書數目 No. of Certificates of Survey issued to Local Vessels <ul style="list-style-type: none"> – 第 I 類 Class I – 第 II 類 Class II – 第 III 類 Class III – 第 IV 類 Class IV 		
總計 Total	3 760	3 054
B. 審批圖則／文件 Plans/Documents Examined <ol style="list-style-type: none"> 1. 船隻傾斜測試及穩性確定數目 No. of Vessels Inclining tested and Stability Information assessed 2. 審核本地船隻的船體、機械和設備圖則數目 No. of Plans of Hull, Machinery and Equipment examined for Local Vessels 		
總計 Total	12 189	9 975

表 27 – 續
TABLE 27 – Cont'd

I. 船舶的檢驗和檢查統計 (續) Statistics on Surveys and Inspections of Vessels (Cont'd)	2011	2012
C. 檢驗本地船隻數目 (包括新船、現有船隻、抽查船隻及被扣留的船隻) Local Vessels Inspected (New, Existing, Spot-check Vessels and Detained Vessels) <ol style="list-style-type: none"> 1. 執行其他政府部門要求檢查的船隻數目 No. of Inspections of Vessels for Other Government Departments 2. 完成首次檢驗而新領牌的船隻數目 No. of Newly Licensed Vessels after Completing Initial Survey 3. 在本港檢驗本地船隻的數目 No. of Local Vessels Inspected Locally 	<p style="text-align: center;">90</p> <p style="text-align: center;">38</p> <p style="text-align: center;">2 701</p>	<p style="text-align: center;">66</p> <p style="text-align: center;">94</p> <p style="text-align: center;">1 951</p>
總計 Total	2 829	2 111
D. 檢驗本地船隻次數 (包括新船、現有船隻、抽查船隻及被扣留的船隻) Inspection Visits Made to Local Vessels (New, Existing, Spot-check Vessels and Detained Vessels) <ol style="list-style-type: none"> 1. 檢驗碰撞後破損的本地船隻次數 No. of Inspection Surveys of Damaged Local Vessels after Collision 2. 抽查及複驗本地船隻次數 No. of Spot Checks and Audit Checks on Local Vessels 3. 海外檢驗本地船隻次數 No. of Overseas Visits for Inspection of Local Vessels 4. 本地船隻在本港首次及定期檢查次數 No. of Initial and Periodical Inspection Visits Made Locally to Local Vessels 	<p style="text-align: center;">17</p> <p style="text-align: center;">95</p> <p style="text-align: center;">171</p> <p style="text-align: center;">3 581</p>	<p style="text-align: center;">9</p> <p style="text-align: center;">330</p> <p style="text-align: center;">174</p> <p style="text-align: center;">2 803</p>
總計 Total	3 864	3 316
E. 舉辦安全講座及研討會 Talks and Seminars Conducted	2	3

資料來源： 海事處本地船舶安全組
Data Source: Local Vessels Safety Section, Marine Department

表 27 – 續
TABLE 27 – Cont'd

II. 檢查正在進行工程的船舶及調查海上工業意外事故等 Inspections of Vessels Engaged in Works and Investigations of Marine Industrial Accidents etc.	2011	2012
A. 貨櫃檢查數目 No. of Containers Inspected	9 440	9 409
B. 海事工業安全檢查 (不包括貨櫃檢查) Marine Industrial Safety Inspections (not including inspection of containers)		
1. 檢查正在修理的船舶 Inspections of Vessels Undergoing Repair	931	884
2. 檢查海事工程船舶 Inspections of Vessels Engaged in Marine Construction	145	138
3. 檢查遠洋船裝卸貨物工具 Cargo Gear Inspections on Ocean-going Vessels	322	289
4. 檢查遠洋船裝卸貨物 Stevedoring Inspections on Ocean-going Vessels	2 477	2 293
5. 檢查駁船裝卸貨物工具 Cargo Gear Inspections on Lighters	536	454
6. 檢查駁船裝卸貨物 Stevedoring Inspections on Lighters	2 812	2 222
總計 Total	7 223	6 280
C. 海事工業意外的調查及查詢數目 Marine Industrial Accidents Investigated/Inquired		
1. 調查致命的非海事工業意外 Non-marine Industrial Fatal Accidents investigated	0	1
2. 調查致命的海事工業意外 Marine Industrial Fatal Accidents investigated	4	6
3. 調查嚴重意外 Serious Accidents investigated	1	2
4. 調查嚴重意外 (無傷亡) Serious Accidents (No Casualty) investigated	1	1
5. 查詢非嚴重意外 Non-serious Accidents inquired	224	128 #
總計 Total	230	138 #

表 27 – 續
TABLE 27 – Cont'd

II. 檢查正在進行工程的船舶及調查海上工業意外事故等 (續) Inspections of Vessels Engaged in Works and Investigations of Marine Industrial Accidents etc. (Cont'd)	2011	2012
D. 發生海事工業意外的數目 Marine Industrial Accidents Occurred <ol style="list-style-type: none"> 1. 修船意外總數 Total Ship Repair Accidents 2. 裝卸貨物意外總數 Total Cargo Handling Accidents 3. 海事工程意外總數 Total Marine Construction Accidents 		
總計 Total	248	157 #
E. 簽發修船許可證／轉介檢控小組的個案／發出警告信的數目 Letters of Permission to Undertake Repairs Issued/Cases Referred to Prosecutions Unit/Warning Letters Issued <ol style="list-style-type: none"> 1. 簽發修船許可證 Letters of Permission to Undertake Repairs issued 2. 轉介檢控小組的個案 Cases referred to Prosecutions Unit 3. 發出警告信 Warning Letters issued 		
總計 Total	4 400	4 066
F. 海事工業安全的宣傳及教育 Promotion and Education on Marine Industrial Safety <ol style="list-style-type: none"> 1. 發出安全指令 Safety Directions issued 2. 出版或修訂的安全小冊子／單張／海報／貼紙數目 No. of Safety Pamphlets/Leaflets/Posters/Stickers published or revised 3. 出版或修訂的安全指南／工作守則數目 No. of Safety Guides/Codes of Practice published or revised 4. 安全講座及研討會的舉辦數目 No. of Safety Talks and Seminars conducted 		
總計 Total	73	44

資料來源： 海事處海事工業安全組
Data Source: Marine Industrial Safety Section, Marine Department

表 27 – 續
TABLE 27 – Cont'd

III. 香港註冊船舶的損失數目 ⁽¹⁾ Loss of Vessels Registered in Hong Kong ⁽¹⁾		
損失船舶數目 Number Lost	2011	2012
		1

註釋： (1) 指因遇險而導致損失的船舶。

Note: Refers to loss of vessels due to casualty or accident.

資料來源： 海事處船舶註冊及商船海員管理處

Data Source: Shipping Registry and Mercantile Marine Office, Marine Department

IV. 2012 年海上意外事故統計 Marine Accidents Statistics in 2012								
意外事故類別 Type of Accident	香港水域範圍以內 ⁽¹⁾ Within Hong Kong Waters ⁽¹⁾				香港水域範圍以外 ⁽²⁾ Outside Hong Kong Waters ⁽²⁾			
	宗數 No. of Cases	死亡人數 Persons Killed	受傷人數 Persons Injured	失蹤人數 Persons Missing	宗數 No. of Cases	死亡人數 Persons Killed	受傷人數 Persons Injured	失蹤人數 Persons Missing
相撞 Collision	147	39	125	0	46	2	0	11
擱淺／觸礁 Grounding/Stranding	39	1	3	0	17	0	0	0
沉沒／入水 Sinking /Foundering	29	0	0	0	6	0	13	6
火警／爆炸 Fire/Explosion	13	1	2	0	7	4	7	0
翻沉／傾斜 Capsized/Listing	17	2	5	0	2	0	0	2
接觸 Contact	36	0	1	0	18	0	27	0
其他 Others	30	0	0	0	15	0	0	0
總計 Total	311	43	136	0	111	6	47	19

註釋： (1) 包括所有船舶 (如香港註冊及外國註冊船舶、本地領牌船隻、內河船隻、沿海船隻、政府船舶等等) 的意外及傷亡數字。

Notes: Including accidents and casualties figures of all vessels (such as Hong Kong registered and foreign registered vessels, local licensed vessels, river trade vessels, coastal vessels, government launches, etc.).

(2) 只包括在香港註冊或領牌的船舶之意外及傷亡數字。

Including accidents and casualties figures of Hong Kong registered vessels or local licensed vessels only.

資料來源： 海事處海事意外調查組

Data Source: Marine Accident Investigation Section, Marine Department

表 27 – 續
TABLE 27 – Cont'd

V. 海上意外事故調查 Marine Accident Investigation		2011	2012
調查意外事故 《船舶及港口管制條例》， 《商船(本地船隻)條例》及 《商船條例》	Accidents Investigated (Shipping and Port Control Ordinance) (Merchant Shipping (Local Vessel) Ordinance) & (Merchant Shipping Ordinance)	23	34
初步研訊 《商船條例》	Preliminary Inquiries (Merchant Shipping Ordinance)	0	0
領港研訊 《領港條例》	Pilotage Inquiries (Pilotage Ordinance)	0	0
海事法庭	Marine Courts	0	0
調查委員會	Board of Inquiry	0	0
對調查委員會裁決提出上訴	Appeal against the Decision of Board of Inquiry	0	0

資料來源： 海事處海事意外調查組

Data Source: Marine Accident Investigation Section, Marine Department

表 28
TABLE 28

海員發證、註冊和僱用統計數字
Seafarers' Certification, Registration and Employment Statistics

A. 遠洋合格證明書 Seagoing Certificates of Competency		2011		2012	
		申請人數 Number of Applications	及格人數 Number of Successes	申請人數 Number of Applications	及格人數 Number of Successes
1. 商船船長及 甲板高級船員	Master Mariner and Deck Officer				
一級甲板高級船員 (商船船長)	Deck Officer Class 1 (Master Mariner)				
筆試	Written Examination	3	2	1	1
口試	Oral Examination	8	5	5	5
其他	Other Services	37	37	28	28
二級甲板高級船員	Deck Officer Class 2				
筆試	Written Examination	5	3	4	4
口試	Oral Examination	6	4	4	4
其他	Other Services	19	19	17	17
三級甲板高級船員	Deck Officer Class 3				
筆試	Written Examination	39	19	7	5
口試	Oral Examination	38	29	10	6
訊號	Signal	51	19	9	6
其他	Other Services	28	28	14	14
小計	Sub-total	234	165	99	90
2. 輪機師	Marine Engineer Officer				
一級輪機師	Marine Engineer Officer – Class 1				
筆試	Written Examination	8	1	7	2
口試	Oral Examination	9	1	8	4
其他	Other Services	32	32	19	19
二級輪機師	Marine Engineer Officer – Class 2				
筆試	Written Examination	23	3	21	7
口試	Oral Examination	26	7	22	9
其他	Other Services	28	28	13	13
三級輪機師	Marine Engineer Officer – Class 3				
口試	Oral Examination	18	22	24	14
其他	Other Services	40	40	37	36
小計	Sub-total	184	134	151	104
總計	Total	418	299	250	194

表 28 – 續
TABLE 28 – Cont'd

B. 內河航行合格證明書 River Trade Certificates of Competency		2011		2012	
		申請人數 Number of Applications	及格人數 Number of Successes	申請人數 Number of Applications	及格人數 Number of Successes
1. 甲板高級船員	Deck Officer				
一級甲板高級船員	Deck Officer Class 1				
筆試	Written Examination	5	4	1	1
口試	Oral Examination	16	11	12	9
其他	Other Services	56	56	20	20
二級甲板高級船員	Deck Officer Class 2				
筆試	Written Examination	14	4	8	6
口試	Oral Examination	6	5	23	21
其他	Other Services	11	11	7	7
三級甲板高級船員	Deck Officer Class 3				
筆試	Written Examination	21	14	12	9
口試	Oral Examination	33	18	23	14
訊號	Signal	28	12	20	8
其他	Other Services	15	15	21	21
小計	Sub-total	205	150	147	116
2. 輪機師	Marine Engineer Officer				
一級輪機師	Marine Engineer Officer – Class 1				
筆試	Written Examination	0	0	0	0
口試	Oral Examination	1	1	0	0
其他	Other Services	12	12	7	7
二級輪機師	Marine Engineer Officer – Class 2				
筆試	Written Examination	22	4	22	6
口試	Oral Examination	28	6	22	5
其他	Other Services	24	24	13	13
三級輪機師	Marine Engineer Officer – Class 3				
口試	Oral Examination	13	7	9	1
其他	Other Services	11	11	5	5
小計	Sub-total	111	65	78	37
總計	Total	316	215	225	153

表 28 – 續
TABLE 28 – Cont'd

C.1 本地合格證明書 Local Certificates of Competency		2011		2012	
		申請人數 Number of Applications	及格人數 Number of Successes	申請人數 Number of Applications	及格人數 Number of Successes
1. 船長	Coxswain				
一級船長	Coxswain Grade 1				
筆試	Written Examination	12	7	14	9
其他	Other Services	57	56	113	113
二級船長	Coxswain Grade 2				
筆試	Written Examination	94	16	88	15
口試	Oral Examination	67	24	41	20
其他	Other Services	111	111	128	127
三級船長	Coxswain Grade 3				
筆試	Written Examination	270	120	211	67
口試	Oral Examination	0	0	1	0
其他	Other Services	142	142	175	175
小計	Sub-total	753	476	771	526
2. 輪機操作員	Engine Operator				
一級輪機操作員	Engine Operator Grade 1				
其他	Other Services	110	108	152	127
二級輪機操作員	Engine Operator Grade 2				
筆試	Written Examination	44	16	59	15
其他	Other Services	1	0	2	2
三級輪機操作員	Engine Operator Grade 3				
筆試	Written Examination	281	138	212	67
其他	Other Services	94	90	116	112
小計	Sub-total	530	352	541	323
總計	Total	1 283	828	1 312	849

表 28 – 續
TABLE 28 – Cont'd

C.2 遊樂船隻操作人合格證明書 Pleasure Vessel Operator Certificate of Competency		2011		2012	
		申請人數 Number of Applications	及格人數 Number of Successes	申請人數 Number of Applications	及格人數 Number of Successes
遊樂船隻 一級操作人	Pleasure Vessel Operator Grade 1				
筆試	Written Examination	94	19	118	45
口試	Oral Examination	90	67	168	113
其他	Other Services	211	211	198	198
遊樂船隻 二級操作人	Pleasure Vessel Operator Grade 2				
筆試	Written Examination	4 789	2 637	6 407	3 483
口試	Oral Examination	0	0	10	0
其他	Other Services	383	383	305	305
總計	Total	5 567	3 317	7 206	4 144

D. 部門考試 Departmental Examinations		2011		2012	
		考試人數 Examined	及格人數 Passed	考試人數 Examined	及格人數 Passed
一級本地船長	Coxswain Grade 1	0	0	0	0
二級本地船長	Coxswain Grade 2	43	7	136	26
三級本地船長	Coxswain Grade 3	26	15	34	16
一級輪機操作員	Engine Operator Grade 1	0	0	0	0
二級輪機操作員	Engine Operator Grade 2	28	17	25	6
三級輪機操作員	Engine Operator Grade 3	39	15	39	17
總計	Total	136	54	234	65

表 28 – 續
TABLE 28 – Cont'd

E. 其他考試／評定 Other Examinations/Assessments	2011		2012	
	申請人數 Number of Applications	及格人數 Number of Successes	申請人數 Number of Applications	及格人數 Number of Successes
救生艇筏熟練操作證明書 Proficiency in Survival Craft Certificate	0	0	0	0
高級水手／水手證明書 Able Bodied Seaman/Efficient Deck Hand Certificate	0	0	0	0
船舶保安主任證明書 Certificate of Proficiency of Ship Security Officer	22	22	15	15
類型級別證明書 (考試、重新生效及夜航批准) Type Rating Certificate (Examination, Revalidation and Night Service Approval)	543	541	462	461
香港執照 Hong Kong Licence	17 870	17 870	18 425	18 425
本地豁免 Local Exemption	9	9	3	3
總計 Total	18 444	18 442	18 905	18 904

備註： 其他 – 包括有關證明書批註、豁免、重新生效等事宜的申請。

Remark: Other services – including applications for endorsement, exemption and revalidation etc.

F. 截至 2012 年 12 月 31 日為止的海員註冊人數 Seafarer's Registration as at 31.12.2012			
根據第478章註冊的海員 Seafarers Registered Under Cap.478	第一部 Part I	第二部 Part II	總計 Total
	4 073	1 439	5 512

G. 2012 年所簽發的僱用登記簿數目 Employment Registration Books Issued, 2012	
續發簿 Subsequent Books	0
補發簿 Replacement Books	3
新海員簿 New Entrants Books	168
總計 Total	171

表 28 – 續
TABLE 28 – Cont'd

H. 2012 年海員就業統計數字 Seafarers Employment Statistics, 2012				
期間 Period	僱用海員方式 Seafarers Employed Through			
	核准公司名冊 Permitted Company Roster	總名冊 General Roster	緊急僱用／重新僱用等 Emergency/Re-employment, etc.	總計 Total
2012年第一季 1 st Quarter 2012	40	2	0	42
2012年第二季 2 nd Quarter 2012	66	0	103	169
2012年第三季 3 rd Quarter 2012	261	2	454	717
2012年第四季 4 th Quarter 2012	74	4	0	78
總計 Total	441	8	557	1 006

I. 船公司及職位統計數字 Companies and Posts Statistics	
截至 2012年12月31日為止在商船海員管理處登記僱用本港註冊海員的船公司數目 Shipping companies listed with Mercantile Marine Office to employ Hong Kong registered seafarers as at 31.12.2012	29
2012年按船公司所交周年報表而編製的本港海員就業職位 Posts filled by Hong Kong seafarers as compiled from annual returns submitted by shipping companies, 2012	1 503

J. 2012年訂立和終結的香港註冊船舶船員協議條款 Crew Agreements of Hong Kong Registered Ships Opened and Closed, 2012				
	訂立的協議 Agreements Opened		終結的協議 Agreements Closed	
	在香港境內 In Hong Kong	在香港境外 Outside Hong Kong	在香港境內 In Hong Kong	在香港境外 Outside Hong Kong
船員協議條款數目 No. of agreements	77	1 461	75	1 424
總計 Total	1 538		1 499	

表 28 – 續
TABLE 28 – Cont'd

K. 香港註冊船舶僱用和解職的海員人次 ⁽¹⁾ Number of Employment and Discharge of Seafarers by Hong Kong-registered Ships ⁽¹⁾		
	2011	2012
僱用的海員人次 No. of employment of seafarers	85 800	92 280
解職的海員人次 No. of discharge of seafarers	83 640	89 940

註釋： (1) 數字包括在香港以外地方註冊的海員。

Note: Figures include seafarers registered outside Hong Kong.

資料來源： (A) – (E) 海事處海員發證組
Data Sources: Seafarers' Certification Section, Marine Department

(F) – (K) 海事處註冊及商船海員管理處
Shipping Registry and Mercantile Marine Office, Marine Department

表 29
TABLE 29

香港註冊船舶統計數字
Statistics on Ships Registered in Hong Kong

A. 2012 年船舶數目和噸位
Number of Ships and Tonnage, 2012

	船舶數目 No. of Ships	淨噸位 ⁽¹⁾ Net Tonnage ⁽¹⁾	總噸位 ⁽¹⁾ Gross Tonnage ⁽¹⁾
(i) 2012 年 12 月 31 日船舶註冊概況 On register as at 31.12.2012	2 193	44 319 207	78 855 038
(ii) 2012 年註冊的船舶 Ships Registered in the year of 2012	406	8 948 628	15 813 566
(iii) 2012 年取消註冊的船舶 Ships De-registered in the year of 2012	133	2 334 116	4 470 890

註釋： (1) 淨噸位及總噸位以每單位 100 立方呎計算。
Note: Net and gross tonnages are in units of 100 cubic feet.

B. 按總噸位分析於 2012 年年底在香港註冊的船舶數目
Ships Registered in Hong Kong Analysed by Gross Tonnage, as at end of 2012

總噸位 Gross Tonnage	船舶數目 No. of Ships
< 500	161
500 - 999	58
1 000 - 1 999	38
2 000 - 2 999	18
3 000 - 3 999	25
4 000 - 4 999	38
5 000 - 9 999	259
10 000 - 14 999	77
15 000 - 19 999	164
20 000 - 24 999	157
25 000 - 29 999	226
30 000 - 34 999	183
35 000 - 39 999	134
40 000 - 44 999	160
45 000 - 49 999	25
50 000 - 59 999	99
60 000 - 69 999	48
70 000 - 79 999	16
80 000 - 89 999	70
90 000 - 99 999	113
100 000 - 149 999	52
≥ 150 000	72
總計 Total	2 193

表 29 – 續
TABLE 29 – Cont'd

C. 按船舶種類分析於 2012 年度在香港註冊及取消註冊的船舶數目
Ship Registered and De-registered in Hong Kong by Ship Type, 2012

船舶類型 Type of Ship	註冊船舶 Ship Registered		取消註冊船舶 Ship De-registered	
	船舶數目 No. of Ships	總噸位 Gross Tonnage	船舶數目 No. of Ships	總噸位 Gross Tonnage
散裝貨船 Bulk Carrier	208	9 214 227	60	2 383 649
化學品船 Chemical Tanker	27	312 980	9	71 182
集裝箱船 Container	54	2 922 778	11	514 388
渡輪 Ferry	0	0	2	739
氣體運輸船 Gas Carrier	4	112 853	1	6 521
一般貨船 General Cargo Ship	51	612 881	16	260 159
高速船 High Speed Craft	0	0	3	5 361
躉船 Lighter and Barge	8	20 307	5	29 145
油輪 Oil Tanker	25	1 556 815	11	510 708
礦沙／散貨／ 油類混用船 Ore/Bulk/Oil (OBO) Carrier	9	969 632	6	669 463
其他油輪 Other Tanker	1	4 126	0	0
滾裝卸式船 Roll On/Roll Off	0	0	1	16 075
拖船 Tug	8	86 004	3	3 273
遊艇 Yacht	11	963	5	227
總計 Total	406	15 813 566	133	4 470 890

資料來源： 海事處船舶註冊處
Data Source: Shipping Registry, Marine Department

表 30
TABLE 30

政府船隊統計數字
Government Fleet Statistics

項目	Item	2011	2012
1. 開支預算總額 ⁽¹⁾ (百萬元)	Total expenditure estimate ⁽¹⁾ (\$M)	392.4	410.0
2. 截至 12 月 31 日的政府船隊科員工總數 (包括船員)	Total number of Government Fleet Division (GFD) staff (including crew) as at 31 December	501	503
3. (i) 建成及交收的政府新船 (ii) 建造中的政府新船 (iii) 已完成的政府新船計劃 (iv) 正進行中的政府新船計劃	(i) Government new vessels built and delivered (ii) Government new vessels under construction (iii) Government new vessel projects completed (iv) Government new vessel projects in progress	16 16 11 5	31 17 9 9
4. 新船招標／報價	Tenders/Quotations called for new vessels	11	14
5. 新船合約	Contracts awarded for new vessels	12	9
6. 已完成的合約及購買規格書	Contracts and procurement specifications completed	23	23
7. (i) 政府船舶總數 a. 大型機動船舶 b. 大型高速船 c. 其他雜類型船舶 (ii) 配備海事處人員的政府船舶 (iii) 海事處可供調配船員的時數率 (%) (iv) 已處理報廢的政府船舶	(i) Total number of vessels a. Major mechanised vessels b. High speed craft (large type) c. Other miscellaneous class vessels (ii) Government craft manned by the Marine Department (MD) (iii) MD crew staff time available for deployment (%) (iv) Government craft disposed	788 96 14 678 43 86.2 21	807 95 13 699 43 87.8 23
8. (i) 大型機動船舶及大型高速船的可提供使用率 (ii) 大型機動船舶及大型高速船的平均數目 (iii) 船舶維修後首次試航成功率 (iv) 政府船隊維修保養服務使用者滿意率 (%)	(i) Availability of major mechanised vessels and high speed craft (large type) (%) (ii) Average number of major mechanised vessels and high speed craft (large type) (iii) Vessel seatrial successful rate in first attempt after repair maintenance service (%) (iv) User satisfaction level on Government fleet repair maintenance service (%)	88.3 110 91.7 99.1	88.2 108 93.8 99.1
9. 大型機動船舶及大型高速船 (包括他們的機動子艇) 保養費總額 (百萬元)	Total maintenance cost of major mechanised vessels and high speed craft (large type) (including their mechanised daughter boats) (\$M)	138.1	157.2
10. 大型機動船舶及大型高速船 (包括他們的機動子艇) 平均保養費 (百萬元)	Average maintenance cost of major mechanised vessels and high speed craft (large type) (including their mechanised daughter boats) (\$M)	1.3	1.5
11. (i) 船舶維修定期保養合約安排總數 a. 根據合約保養的船舶數目 b. 根據合約保養的主機數目 (ii) 採購機械零件的定期合約數目	(i) Total number of vessel maintenance term contract (TC) arrangements a. Number of vessels maintained under TC b. Number of main engines repaired under TC (ii) Number of TC for procurement of machinery spare parts	48 114 259 15	46 111 256 16
12. 配備海事處人員的政府船舶肇事個案 (i) 肇事政府船舶數目 (ii) 工傷意外傷亡數目 a. 船塢員工 b. 船員	Accidents involving Government craft manned by MD (i) Number of Government vessels involved (ii) Number of casualties in industrial accidents a. Dockyard staff b. Crew	7 4 6	10 7 10
13. 參加職業安全及健康 (職安健) 課程的政府船塢人員人數 (i) 職業安全健康局舉辦課程 (ii) 政府船隊科工業安全組舉辦的課程 (iii) 其他職安健課程	Number of attendees of Government Dockyard to Occupational Safety and Health (OSH) training courses (i) Organised by the OSH Council (ii) Organised by the Industrial Safety Section, GFD (iii) Other OSH courses	26 191 37	28 184 51

註釋： (1) 指財政年度內的數字 (由當年四月一日至下年三月三十一日)。
Note: Refer to financial year figures (i.e. from 1 April of current year to 31 March of next year).

資料來源： 海事處政府船隊科
Data Source: Government Fleet Division, Marine Department

表 31
TABLE 31

政府船舶所屬部門及可用率情況 (截至 2012 年年底)
Departmental Ownership and Availabilities of Government Vessels (as at year end 2012)

船舶類型 Vessel Type	所屬部門 Ownership														
	漁農自然護理署 AFCD	醫療輔助隊 AMS	民眾安全服務隊 CAS	土木工程拓展署 CEDD	懲教署 CSD	香港海關 C&ED	環境保護署 EPD	消防處 FSD	衛生署 DH	香港警務處 HKPF	入境事務處 Imm D	康樂及文化事務署 LCSD	海事處 MD	水務署 WSD	總計 Total
機動子艇及泳灘艇 Mechanised Daughter Boats & Beach Craft	0	0	0	0	0	7	0	9	0	26	0	129	2	0	173
浮橋物／泳灘浮台及浮筏 Floating Bridge Structures/Beach Platforms & Rafts	0	0	0	0	0	0	0	0	0	0	0	360	0	0	360
機動及非機動充氣式橡皮艇 Mechanised and Non-mechanised Inflatable Boats	3	1	11	0	0	2	1	11	0	7	0	0	0	2	38
駁船 Lighters	0	0	0	0	0	0	0	1	0	6	0	0	21	0	28
小型機動船及小艇 Minor Mechanised Vessels & Dinghies	12	0	0	0	0	0	0	11	0	11	0	0	6	5	45
大型機動船舶 Major Mechanised Vessels	3	0	0	3	2	7	1	9	1	36	7	0	26	0	95
大型高速船 High Speed Craft (large type)	0	0	0	0	0	3	0	0	0	10	0	0	0	0	13
中型高速船 High Speed Craft (medium type)	8	0	0	0	0	2	0	2	0	38	0	0	5	0	55
總計 Total	26	1	11	3	2	21	2	43	1	134	7	489	60	7	807
大型機動船及大型高速船平均可提供使用率 Average Availability of Major Mechanised Vessels & High Speed Craft (large type) (%)	90.6	-	-	91.2	88.1	88.9	92.0	88.0	89.5	87.1	85.9	-	89.7	-	88.2

資料來源： 海事處政府船隊科

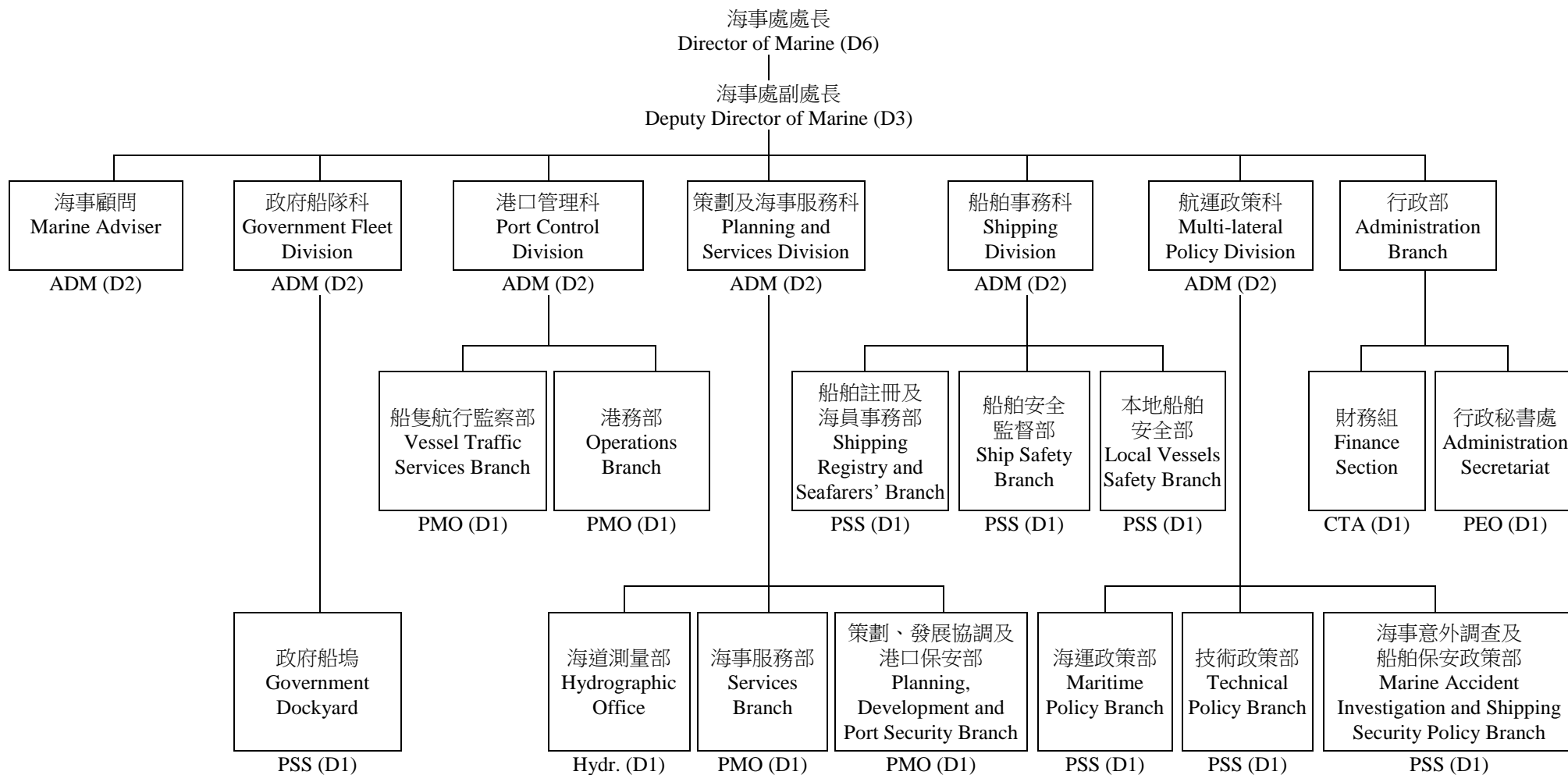
Data Source: Government Fleet Division, Marine Department

附錄

Appendices

附錄 A
APPENDIX A

海事處組織架構圖 (截至 2012 年年底)
Marine Department Organisation Chart (as at year end 2012)



- 圖例：
Legend:
- | | | | | | |
|-------|-----------|------------------------------|-----|------------------|---------------------------------|
| ADM | = 海事處助理處長 | Assistant Director of Marine | PEO | = 首席行政主任 | Principal Executive Officer |
| PMO | = 首席海事主任 | Principal Marine Officer | CTA | = 總庫務會計師 | Chief Treasury Accountant |
| PSS | = 首席驗船主任 | Principal Surveyor of Ships | D6 | = 首長薪級第六點 (如此類推) | Directorate Level 6 (and so on) |
| Hydr. | = 海道測量師 | Hydrographer | | | |

附錄 B
APPENDIX B

海事處的編制和實際員額 (截至 2012 年年底)
Marine Department Establishment and Strength (as at year end 2012)

首長級人員 Directorate Officers		編制 Establishment	實際員額 Strength
海事處處長	Director of Marine (D6)	1	1
海事處副處長	Deputy Director of Marine (D3)	1	1
海事處助理處長	Assistant Director of Marine (D2)	6	6
首席海事主任	Principal Marine Officer (D1)	4	4
首席驗船主任	Principal Surveyor of Ships (D1)	7	7
首席行政主任	Principal Executive Officer (D1)	1	1
總庫務會計師	Chief Treasury Accountant (D1)	1	1
海道測量師	Hydrographer (D1)	1	1
部門職系 Departmental Grade			
高級海事主任	Senior Marine Officer	19 + 2 [♦]	21
海事主任	Marine Officer	39	28
海事監督	Marine Controller	13	13
助理海事監督	Assistant Marine Controller	42 + 1 [♦]	34
高級船舶安全主任	Senior Shipping Safety Officer	1	1
船舶安全主任	Shipping Safety Officer	6	6
高級驗船主任	Senior Surveyor of Ships	16	16
驗船主任	Surveyor of Ships	31	26
高級助理船務主任	Senior Assistant Shipping Master	27	26
助理船務主任	Assistant Shipping Master	1	0
一級海事督察	Marine Inspector I	95 + 4 [♦]	85
二級海事督察	Marine Inspector II	104	113
輔航設備監督	Superintendent of Aids to Navigation	1	1
助理輔航設備監督	Assistant Superintendent of Aids to Navigation	2	2
總驗船督察	Chief Ship Inspector	2	2
高級驗船督察	Senior Ship Inspector	11	10
驗船督察	Ship Inspector	21	19
助理驗船督察	Assistant Ship Inspector	8	11
小輪大偈	Launch Mechanic	1	1

附錄 B - 續
APPENDIX B - Cont'd

一般職系 General Grade		編制 Establishment	實際員額 Strength
高級統計師	Senior Statistician	1	1
一級統計主任	Statistical Officer I	1	1
二級統計主任/ 見習統計主任	Statistical Officer II/ Student Statistical Officer	3	3
系統經理	Systems Manager	1	1
一級系統分析/ 程序編製主任	Analyst/Programmer I	5	5
二級系統分析/ 程序編製主任	Analyst/Programmer II	6	5
高級庫務會計師	Senior Treasury Accountant	1	1
庫務會計師	Treasury Accountant	3	3
高級會計主任	Senior Accounting Officer	1	1
一級會計主任	Accounting Officer I	1	1
二級會計主任	Accounting Officer II	3	3
總行政主任	Chief Executive Officer	1	1
高級行政主任	Senior Executive Officer	2	0
一級行政主任	Executive Officer I	7	7
二級行政主任	Executive Officer II	5	7
高級法定語文主任	Senior Official Languages Officer	1	1
一級法定語文主任	Official Languages Officer I	2	1
二級法定語文主任	Official Languages Officer II	2	3
高級電子工程師	Senior Electronics Engineer	1	0
電子工程師/ 助理電子工程師	Electronics Engineer/ Assistant Electronics Engineer	2	3
土地測量師/ 助理土地測量師	Land Surveyor/ Assistant Land Surveyor	2	2
電子督察	Electronics Inspector	1	1
助理空氣調節督察	Assistant Air-Conditioning Inspector	1	1
首席測量主任 (工程)	Principal Survey Officer (Engineering)	1 + 1 [♦]	1
高級測量主任 (工程)	Senior Survey Officer (Engineering)	4	4
測量主任 (工程)/ 見習測量主任 (工程)	Survey Officer (Engineering)/ Survey Officer Trainee (Engineering)	11	12

附錄 B - 續
APPENDIX B - Cont'd

一般職系 General Grade		編制 Establishment	實際員額 Strength
首席技術主任 (製圖)	Principal Technical Officer (Cartographic)	1	1
高級技術主任 (製圖)	Senior Technical Officer (Cartographic)	3	4
技術主任 (製圖) / 見習技術主任 (製圖)	Technical Officer (Cartographic) / Technical Officer Trainee (Cartographic)	5	5
高級文書主任	Senior Clerical Officer	6	5
文書主任	Clerical Officer	30 + 2 [♦]	30
助理文書主任	Assistant Clerical Officer	70 + 1 [♦]	69
文書助理	Clerical Assistant	117	109
辦公室助理員	Office Assistant	8	6
高級物料供應主任	Senior Supplies Officer	1	1
物料供應主任	Supplies Officer	1	1
助理物料供應主任	Assistant Supplies Officer	1	1
高級物料供應員	Senior Supplies Supervisor	1	1
一級物料供應員	Supplies Supervisor I	2	2
二級物料供應員	Supplies Supervisor II	11	11
助理物料供應員	Supplies Assistant	3	3
物料供應服務員	Supplies Attendant	2	2
高級私人秘書	Senior Personal Secretary	1	1
一級私人秘書	Personal Secretary I	6	6
二級私人秘書	Personal Secretary II	19 + 1 [♦]	17
打字督導	Supervisor of Typing Services	1 + 1 [♦]	1
機密檔案室助理	Confidential Assistant	1	1
繕校員	Calligraphist	2	2
打字員	Typist	4	4
汽車司機	Motor Driver	4	4

附錄 B - 續
APPENDIX B - Cont'd

共通職系 Common Grade		編制 Establishment	實際員額 Strength
總技術主任	Chief Technical Officer	2	2
高級電氣督察	Senior Electrical Inspector	2 + 2 [♦]	3
電氣督察	Electrical Inspector	4 + 1 [♦]	2
助理電氣督察	Assistant Electrical Inspector	2	2
高級機械督察	Senior Mechanical Inspector	7	7
機械督察	Mechanical Inspector	10	9
助理機械督察	Assistant Mechanical Inspector	5	5
一級監工	Works Supervisor I	12	11
二級監工	Works Supervisor II	7	6
小輪船員督導員	Launch Crew Supervisor	3	1
高級小輪船長	Senior Launch Master	59 + 2 [♦]	45
小輪船長	Launch Master	47	58
小輪助理員	Launch Assistant	214 + 1 [♦]	194
高級技工	Senior Artisan	40 + 1 [♦]	36
技工	Artisan	87 + 1 [♦]	50
丈量員	Chainman	4	4
產業看管員	Property Attendant	3	1
二級工人	Workman II	33	23
總計	Total	1 372 + 21[♦]	1 252

♦ 編外職位
Supernumerary post

附錄 C
APPENDIX C

2012 年海事處訓練組舉辦的課程
Training Courses Conducted by Training Section, Marine Department in 2012

課程名稱 Course Title	學期 Duration	參加學員* Target Participants*	班級數目 Number of Classes	學員數目 Number of Participants
1. 香港水域自動雷達標繪儀和高速船雷達課程 Automatic Radar Plotting Aid (ARPA) and High Speed Craft Radar Course for Hong Kong Waters	3 days	FSD, C&E	1	8
2. 基本小型船舶操縱技術課程 Basic Boat Handling Skills Course	5 days	LM, C&E, FSD	1	6
3. 民安隊海上油污訓練課程 CAS Oil Pollution Course	2 days	CAS	2	35
4. 海事教育研討會／工作坊 Education Seminar/Workshop	0.5 day	MC, AMC, MI	1	18
5. 全球海上遇險及安全系統－限用操作員證書課程 Global Maritime Distress and Safety System (GMDSS) – Restricted Operator's Certificate Course	5 days	MI II	2	12
6. 一級海事督察深造課程 Marine Inspector I Enhancement Course	25 days	SASM, MI I	1	10
7. 海事督察訓練課程－甲部 Marine Inspector Training Course – Part A	30 days	MI II	1	13
8. 海事督察訓練課程－乙部 Marine Inspector Training Course – Part B	50 days	MI II	1	12
9. 領港員模擬船操縱課程 Pilotage Simulation Course	1 day	HKPA (A)	2	2
10. 香港水域雷達操作員課程 Radar Operator Course for Hong Kong Waters	7 days	LM, C&E, FSD, Marpol	2	16
11. 船舶交通服務操作員課程 Vessel Traffic Regulator (VTR) Training Course	93 days	AMC	1	3
12. 船舶交通服務操作員課程－海事主任 VTR Training Course – Marine Officer	70 days	MO	1	1
13. 船舶交通服務操作員深造課程－海外人士 Vessel Traffic Services (VTS) Operator Enhancement Course – Overseas	10 days	CHI (VTS)	1	7
14. 船舶交通服務操作員增潤課程 VTS Operator Refreshment Course	0.5 day	MC/AMC	4	43
總計 Total			21	186

附錄 C – 續
APPENDIX C – Cont'd

註釋：* 參加海事處在二零一二年舉辦的訓練課程的機構及職位：

Note: List of organisations/posts participated in the training courses conducted by the Marine Department in 2012:

機構	Organisation	縮寫 Abbreviation
香港海關	Customs and Excise Department	C&E
民眾安全服務隊	Civil Aid Service	CAS
中國 (船隻航行服務) 官員	Chinese (VTS) Personnel	CHI (VTS)
消防處	Fire Services Department	FSD
香港領港會 (見習領港員)	Hong Kong Pilots Association (Apprentice Pilots)	HKPA (A)
香港水警	Marine Police	Marpol

職位	Post	縮寫 Abbreviation
助理海事監督	Assistant Marine Controller	AMC
小輪船長	Launch Master	LM
海事監督	Marine Controller	MC
海事督察	Marine Inspector	MI
一級海事督察	Marine Inspector I	MI I
二級海事督察	Marine Inspector II	MI II
海事主任	Marine Officer	MO
高級助理船務主任	Senior Assistant Shipping Master	SASM

附錄 D
APPENDIX D

2012 年海事處訪客
Visitors of the Marine Department, 2012

本處於二零一二年接待了以下訪客：

During the year of 2012, the Department hosted the following visitors:

編號 No.	訪問日期 Date of Visit	機構／代表 Organisation/Representative
1.	11.1.2012	香港領港會有限公司 (學徒領港見習計劃) Hong Kong Pilots Association Ltd (Attachment programme for apprentice pilots)
2.	16.1.2012	萬利輪船有限公司 Valles Shipping Company
3.	17.1.2012	中國杯帆船賽代表團 Delegation from China Cup International Regatta
4.	20.1.2012	海事雜誌《Fragrant Harbour》(訪問海事處處長) “Fragrant Harbour” (interview with DM)
5.	27.1.2012	無線電視明珠台 (拍攝海事處監察船隻黑煙排放的工作情況) TVB Pearl (filming MD’s action in monitoring black smoke emission from vessels)
6.	13.2.2012	泰國航監中心 Thailand Vessel Traffic Centre
7.	14.2.2012 – 15.2.2012	泰國船隻航行監察服務系統管理局 Vessel Traffic Services Authority of Thailand
8.	17.2.2012	新加坡海事及港務管理局 Maritime and Port Authority of Singapore
9.	21.2.2012	海事報章《勞氏日報》(訪問海事處處長) “Lloyd’s List” (interview with DM)
10.	27.2.2012	美國海岸警衛隊上尉 Captain Compagnoni of United States Coast Guard
11.	13.3.2012	瑞典商會 Swedish Chamber of Commerce
12.	14.3.2012	海事雜誌《Seatrade》(訪問海事處處長) “Seatrade” (interview with DM)
13.	21.3.2012	香港水警 Marine Police
14.	22.3.2012	新加坡民防部隊 Singapore Civil Defense Force
15.	22.3.2012	東方海外貨櫃航運公司 Orient Overseas Container Line Ltd
16.	27.3.2012	亞太經濟合作組織 (港口保安訪問計劃) APEC (Port Security Visit Program)
17.	13.4.2012	美國亞太安全研究中心 Asia-Pacific Center for Security Studies, USA
18.	30.4.2012	印度孟買港口托拉斯基金會 Mumbai Port Trust Fund, India

附錄 D – 續
APPENDIX D – Cont'd

編號 No.	訪問日期 Date of Visit	機構／代表 Organisation/Representative
19.	7.5.2012	巴基斯坦海軍軍艦指揮官 Commander of Pakistan Navy Ship “Azmat”
20.	10.5.2012	廣東海事局 Guangdong Maritime Safety Administration
21.	15.5.2012	土耳其駐港澳總領事 Turkish Consul General of Hong Kong SAR & Macao SAR
22.	16.5.2012	廣東海事局 Guangdong Maritime Safety Administration
23.	16.5.2012 – 17.5.2012	深圳海事局 Shenzhen Maritime Safety Administration
24.	21.5.2012	溢油應變有限公司 (新加坡) Oil Spill Response Limited (Singapore)
25.	24.5.2012	澳門特別行政區港務局 Maritime Administration of Macao Special Administrative Region
26.	25.5.2012	水警訓練學校 Marine Police Training School
27.	29.5.2012	新加坡海事及港務管理局船舶交通管理部門 Vessel Traffic Management Department, Maritime and Port Authority of Singapore
28.	18.6.2012	海事雜誌《Asia Maritime》(訪問海事處處長) “Asia Maritime” (interview with DM)
29.	21.6.2012	香港海事青年團 Hong Kong Sea Cadet Corps
30.	28.6.2012	噴射飛航 TurboJet
31.	29.6.2012	韓國海事大學學生 Students of Korea Maritime University
32.	6.7.2012	公務員絛用委員會 Public Service Commission
33.	6.7.2012	運輸及房屋局局長及常任秘書長(運輸) Secretary for Transport and Housing and Permanent Secretary for Transport and Housing (Transport)
34.	9.7.2012	香港聯合國教科文組織協會 UNESCO Hong Kong Association
35.	20.7.2012	香港領港會有限公司 (學徒領港見習計劃) Hong Kong Pilots Association Ltd (Attachment programme for apprentice pilots)
36.	26.7.2012	運輸及房屋局副秘書長 (運輸) 3 Deputy Secretary for Transport and Housing (Transport) 3
37.	3.9.2012	運輸及房屋局局長 Secretary for Transport and Housing

附錄 D – 續
APPENDIX D – Cont'd

編號 No.	訪問日期 Date of Visit	機構／代表 Organisation/Representative
38.	10.9.2012	香港運輸物流學會 Chartered Institute of Logistics and Transport in Hong Kong
39.	10.9.2012	加拿大卑詩省省長 Premier of British Columbia, Canada
40.	11.9.2012	兩岸三地企業家協會及廣州廣船國際股份有限公司 Association of Chinese Leaders and Entrepreneurs and Guangzhou Shipyard International Company Limited
41.	26.9.2012	警察訓練學校 Police Training School
42.	18.10.2012	美國海軍聯絡官 United States Naval Liaison Officer
43.	19.10.2012	國際運油輪船東污染聯盟有限公司 International Tanker Owners Pollution Federation Limited
44.	26.10.2012	維多利亞省港務局主席及行政總裁 President and CEO of Greater Victoria Harbour Authority
45.	29.10.2012	魯珀特王子港港務局 Prince Rupert Port Authority
46.	30.10.2012	廣東省海員工會 Guangdong Seamen Union
47.	30.10.2012	香港理工大學機械工程學系 Department of Mechanical Engineering, The Hong Kong Polytechnic University
48.	1.11.2012	ARTE 電視台攝製隊 Production team of Association Relative à la Télévision Européenne (ARTE)
49.	5.11.2012 & 9.11.2012	深圳海事局 (港口國監督檢查員交流計劃) Shenzhen Maritime Safety Administration (PSCO Exchange Programme)
50.	11.11.2012	參加“海上緝私互訪交流考察活動 2012”的內地海關人員 (由香港海關人員陪同) Mainland Customs officers under the 2012 exchange visit programme on anti-smuggling at sea (accompanied by C&E officers)
51.	12.11.2012	香港水警 Marine Police
52.	13.11.2012	廣東海事局及深圳海事局 Guangdong Maritime Safety Administration and Shenzhen Maritime Safety Administration
53.	16.11.2012	日本四日市港管理組合 Yokkachi Port Authority Assembly
54.	20.11.2012	加拿大溫哥華市副市長 Deputy Mayor Councilor of Vancouver, Canada
55.	23.11.2012	海事訓練學院 Maritime Services Training Institute
56.	27.11.2012	韓國海洋警察廳 Korea Coast Guard

附錄 D – 續
APPENDIX D – Cont'd

編號 No.	訪問日期 Date of Visit	機構／代表 Organisation/Representative
57.	2.12.2012	大多市華商總會 2012 訪華代表團 Confederation of Greater Toronto Chinese Business Association 2012 China Trade Mission
58.	4.12.2012	國家交通運輸部副部長 Vice Minister, Ministry of Transport, Mainland China
59.	13.12.2012	南中國潛水會 South China Diving Club
60.	21.12.2012	中華人民共和國人力資源和社會保障部 Ministry of Human Resources and Social Security of the People's Republic of China

附錄 E
APPENDIX E

2012 年新訂海事法例
New Maritime Legislations, 2012

二零一二年一月一日至二零一二年十二月三十一日期間通過的海事及航運法例列載如下：
The following maritime and shipping legislation was enacted during the year under review
(1.1.2012 – 31.12.2012):

法例名稱 Title	法例編號 L.N. No.
<< 2012 年危險品 (船運) 規例 >> (第 295 章，附屬法例 F) Dangerous Goods (Shipping) Regulation 2012, Chapter 295F	56 of 2012

附錄 F
APPENDIX F

2012 年輔航設備
Aids to Navigation, 2012

A. 使用中的輔航設備
Aids to Navigation in Use

輔航設備	Aids to Navigation	截至 2012 年 12 月 31 日 as at 31.12.2012
1. 燈浮標	Light Buoy	117
2. 燈航標	Light Beacon	422
3. 雷達應答標	Racon	1
4. 霧角	Fog Horn	7

B. 本年新設的輔航裝置
New Aids Established during the Year

1. 啓德發展碼頭 1 Kai Tak Development Pier 1	兩個以太陽能操作的新燈航標於 2012 年 6 月 15 日設立，用以標示啓德發展碼頭。 Two solar power operated lights were established on 15.6.2012 to mark the Kai Tak Development Pier.
2. 啓德發展碼頭 2 Kai Tak Development Pier 2	
3. 氣象 9 Weather 9	一個以太陽能操作的新氣象燈浮標於 2012 年 9 月 10 日設立在長洲以南，用以收集氣象和水流數據。 A solar power operated weather buoy was established on 10.9.2012 to the south of Cheung Chau for collecting weather and current data.

C. 本年拆除的輔航裝置
Aids Discontinued during the Year

1. 貨運 2 MCT 2	這個燈浮標於 2012 年 2 月 9 日永久終止服務。 The light buoy was permanently withdrawn from service on 9.2.2012.
2. 機場 1 Airport 1	這個燈浮標於 2012 年 3 月 5 日永久終止服務。 The light buoy was permanently withdrawn from service on 5.3.2012.
3. 貨運 1 MCT 1	這個燈浮標於 2012 年 3 月 5 日永久終止服務。 The light buoy was permanently withdrawn from service on 5.3.2012.
4. 東涌 3 T C 3	這個燈浮標於 2012 年 3 月 5 日永久終止服務。 The light buoy was permanently withdrawn from service on 5.3.2012.
5. 氣象 3 Weather 3	這個燈浮標於 2012 年 4 月 11 日永久終止服務。 The light buoy was permanently withdrawn from service on 11.4.2012.

附錄 F - 續
APPENDIX F - Cont'd

D. 本年遭損毀的輔航裝置
Aids Damaged during the Year

下列燈浮標及燈航標遭損毀，航標燈熄滅。
The light buoys and light beacons listed below were damaged and unlit.

月份	Month	名稱	Name
1 月	January	南丫電力 1	P 1
		藍塘 2	TCS2
2 月	February	北航 3	Northern 3
		一尺石	One Foot Rock
4 月	April	繫泊浮泡 A39	Mooring Buoy A39
		北航 2	Northern 2
		石鼓洲	Shek Kwu Chau
		藍塘 4	TCS4
5 月	May	藍塘 3	TCS3
6 月	June	北航 3	Northern 3
8 月	August	北航 2	Northern 2
9 月	September	南丫電力 1	P 1
10 月	October	繫泊浮泡 A43	Mooring Buoy A43
11 月	November	南丫電力 1	P 1
12 月	December	繫泊浮泡 A17	Mooring Buoy A17
		繫泊浮泡 A39	Mooring Buoy A39

附錄 F – 續
APPENDIX F – Cont'd

E. 本年改進的輔航裝置
Aids Reprovisioned during the Year

1. 下列燈航標已換上全新現代化器材，用以提高光達距離。
The light beacons listed below were upgraded with modern equipment for better luminous range.

月份	Month	名稱	Name
1 月	January	長青橋北綠	Cheung Tsing Bridge North Green
		長青橋北紅	Cheung Tsing Bridge North Red
		長青橋北白	Cheung Tsing Bridge North White
		稔灣	Nim Wan
		東涌橋 1	Tung Chung Bridge 1
		東涌橋 2	Tung Chung Bridge 2
		東涌橋 9	Tung Chung Bridge 9
		東涌橋 11	Tung Chung Bridge 11
		東涌橋 13	Tung Chung Bridge 13
2 月	February	模達灣新碼頭	Mo Tat Wan New Pier
		白角新村碼頭	Pak Kok San Tsuen Pier
		半山石	Pun Shan Shek
3 月	March	東芝麻灣	East Chi Ma Wan
5 月	May	鶴咀	Cape D'Aguilar
		鹿頸碼頭	Luk Keng Pier
		大鴉洲	Tai A Chau
		草灣碼頭	Tso Wan Pier
6 月	June	石鼓洲碼頭	Shek Kwu Chau Pier
7 月	July	荔枝莊碼頭	Lai Chi Chong Pier
		沙螺灣渡輪碼頭	Sha Lo Wan Ferry Pier
8 月	August	坪洲碼頭	Peng Chau Pier
		索罟灣碼頭	Sok Kwu Wan Pier
		索罟灣新碼頭	Sok Kwu Wan New Pier
		大水坑碼頭	Tai Shui Hang Pier
9 月	September	青洲新碼頭	Green Island New Pier
		火藥洲	Magazine Island
10 月	October	汾流角	Fan Lau Kok
		龍鼓洲	Lung Kwu Chau
12 月	December	汀九橋墩 2	Ting Kau Bridge Pier 2

附錄 F – 續
APPENDIX F – Cont'd

E. 本年改進的輔航裝置 (續)
Aids Reprovisioned during the Year (Cont'd)

2. 下列燈航標已由全新現代化器材取代，用以提高其可靠性。
The light beacons listed below were replaced with modern equipment for higher reliability.

月份	Month	名稱	Name
1 月	January	石崗圍	Shek Kwong Wai
2 月	February	鳳坑碼頭	Fung Hang Pier
		青洲	Green Island
		谷埔碼頭	Kuk Po Pier
		荔枝窩碼頭	Lai Chi Wo Pier
		筲箕灣 5	Shau Kei Wan 5
3 月	March	長排頭	Cheung Pai Tau
4 月	April	長洲西灣碼頭	Cheung Chau Sai Wan Pier
		廈門灣碼頭	Hap Mun Wan Pier
		企嶺下海碼頭	Kei Ling Ha Hoi Pier
		南鯉魚門	South Lei Yue Mun
		將軍澳 4	Tseung Kwan O 4
5 月	May	北長洲石	Adamasta Rock
		堅尼地城東	Kennedy Town Dolphin East
		西馬灣	West Ma Wan
6 月	June	白石角碼頭北	Pak Shek Kok Pier North
		白石角碼頭南	Pak Shek Kok Pier South
7 月	July	基準石	Datum Rock
		伙頭墳洲碼頭	Fo Tau Fan Chau Pier
		喜靈洲 8	Hei Ling Chau 8
8 月	August	橫瀾碼頭	Waglan Pier
12 月	December	長洲 1	Cheung Chau 1
		長洲 6	Cheung Chau 6

附錄 F – 續
APPENDIX F – Cont'd

E. 本年改進的輔航裝置 (續)
Aids Reprovisioned during the Year (Cont'd)

3. 下列燈航標已更換太陽能電池，用以提高航標的可靠性。
The solar batteries of the light beacons listed below were renewed in order to increase reliability.

月份	Month	名稱	Name
1 月	January	鶴咀	Cape D'Aguilar
		深港西部通道橋墩 1	Hong Kong – Shenzhen Western Corridor Bridge Pier 1
		深港西部通道橋墩 4	Hong Kong – Shenzhen Western Corridor Bridge Pier 4
		三家村 2	Sam Ka Tsuen 2
		燈籠洲	Tang Lung Chau
		青衣南 1	Tsing Yi South 1
		東涌橋 1	Tung Chung Bridge 1
		東涌橋 2	Tung Chung Bridge 2
		東涌橋 9	Tung Chung Bridge 9
		東涌橋 11	Tung Chung Bridge 11
		東涌橋 13	Tung Chung Bridge 13
2 月	February	青衣舊碼頭西北面	Ex Tsing Yi Ferry Pier NW End
		鳳坑碼頭	Fung Hang Pier
		深港西部通道橋墩 2	Hong Kong – Shenzhen Western Corridor Bridge Pier 2
		深港西部通道橋墩 3	Hong Kong – Shenzhen Western Corridor Bridge Pier 3
		谷埔碼頭	Kuk Po Pier
		荔枝窩碼頭	Lai Chi Wo Pier
		北角消防局東碼頭	North Point FSD East Pier
		海上救援西局 1	Sea Rescue West Station 1
		石崗圍	Shek Kwong Wai
		青馬橋墩 1	Tsing Ma Bridge Pier 1
3 月	March	油柑頭碼頭	Yau Kam Tau Pier
		長排頭	Cheung Pai Tau
		政府船塢 2	G D 2
		橋咀排	Kiu Tsui Pai
		九龍灣 2	Kowloon Bay 2
		萬角咀碼頭	Man Kok Tsui Pier
		汀九橋墩 4	Ting Kau Bridge Pier 4
烏溪沙碼頭	Wu Kai Sha Pier		

附錄 F – 續
APPENDIX F – Cont'd

E. 本年改進的輔航裝置 (續)

Aids Reprovisioned during the Year (Cont'd)

3. 下列燈航標已更換太陽能電池，用以提高航標的可靠性。(續)

The solar batteries of the light beacons listed below were renewed in order to increase reliability.
(Cont'd)

月份	Month	名稱	Name
4 月	April	廈門灣碼頭	Hap Mun Wan Pier
		企嶺下海碼頭	Kei Ling Ha Hoi Pier
		火藥洲	Magazine Island
		南沙甫	Nam Shan Po
		醉酒灣 3	Rambler Channel 3
		將軍澳 4	Tseung Kwan O 4
5 月	May	柴灣 A	Chai Wan A
		堅尼地城東	Kennedy Town Dolphin East
		九龍灣 1	Kowloon Bay 1
6 月	June	橋咀洲碼頭	Kiu Tsui Chau Pier
		白石角碼頭北	Pak Shek Kok Pier North
		白石角碼頭南	Pak Shek Kok Pier South
7 月	July	索罟灣新碼頭	Sok Kwu Wan New Pier
8 月	August	長洲 C	Cheung Chau C
9 月	September	長洲 D	Cheung Chau D
		青洲新碼頭	Green Island New Pier
		蘆荻灣碼頭	Lo Tik Wan Pier
		筲箕灣 E	Shau Kei Wan E
		大利橋南 8	Tai Lei Bridge South 8
11 月	November	北小鴉洲	North Siu A Chau
		大澳 3	Tai O 3
12 月	December	政府船塢 1	G D 1
		馬頭角公眾碼頭 東北	Ma Tau Kok Public Pier North East
		白角	Pak Kok
		石角咀	Shek Kok Tsui

附錄 F – 續
APPENDIX F – Cont'd

E. 本年改進的輔航裝置 (續)
Aids Requisitioned during the Year (Cont'd)

4. 下列燈航標的太陽能發電板數目已增加，用以提高航標的可靠性。
The numbers of solar panel of the light beacons listed below were increased to enhance reliability.

月份	Month	名稱	Name
3 月	March	汾流角	Fan Lau Kok
5 月	May	北長洲石	Adamasta Rock
		銀洲	Ngan Chau
10 月	October	龍鼓洲	Lung Kwu Chau

附錄 F – 續
APPENDIX F – Cont'd

F. 輔航燈與輔航設備工場員工比例
Ratio of Aids to Staff of Aids to Navigation Unit Workshop

年份 Year	輔航燈 Aids		輔航設備工場員工 ⁽¹⁾ Staff of Aids to Navigation Unit Workshop ⁽¹⁾		比例 Ratio (c) = (a)/(b)
	數目 Number (a)	變動百分率 Percentage Change	數目 Number (b)	變動百分率 Percentage Change	
1993	356	+8.9 %	40	+17.6%	8.9
1994	375	+5.3 %	40	0%	9.4
1995	379	+1.1 %	37	-7.5%	10.2
1996	380	+0.3 %	36	-2.7%	10.6
1997	395	+3.9 %	32	-11.1%	12.3
1998	432	+9.4 %	29	-9.4%	14.9
1999	463	+7.2 %	27	-6.9%	17.1
2000	468	+1.1 %	27	0%	17.3
2001	482	+3.0 %	25	-7.4%	19.3
2002	483	+0.2 %	27	+8.0%	17.9
2003	497	+2.9 %	27	0%	18.4
2004	509	+2.4 %	27	0%	18.9
2005	518	+1.8 %	25	-7.4%	20.7
2006	529	+2.1 %	23	-8.0%	23.0
2007	533	+0.8 %	23	0%	23.2
2008	536	+0.6 %	24	+4.3%	22.3
2009	540	+0.7 %	23	-4.2%	23.5
2010	543	+0.6 %	24	+4.3%	22.6
2011	541	-0.4 %	23	-4.2%	23.5
2012	539	-0.4 %	22	-4.3%	24.5

註釋： (1) 不包括負責在香港水域範圍內看管繫船設備／檢修浮泡的 5 位員工。

Note: Excluding five staff who are responsible for looking after the mooring facilities/overhaul of buoys within Hong Kong waters.