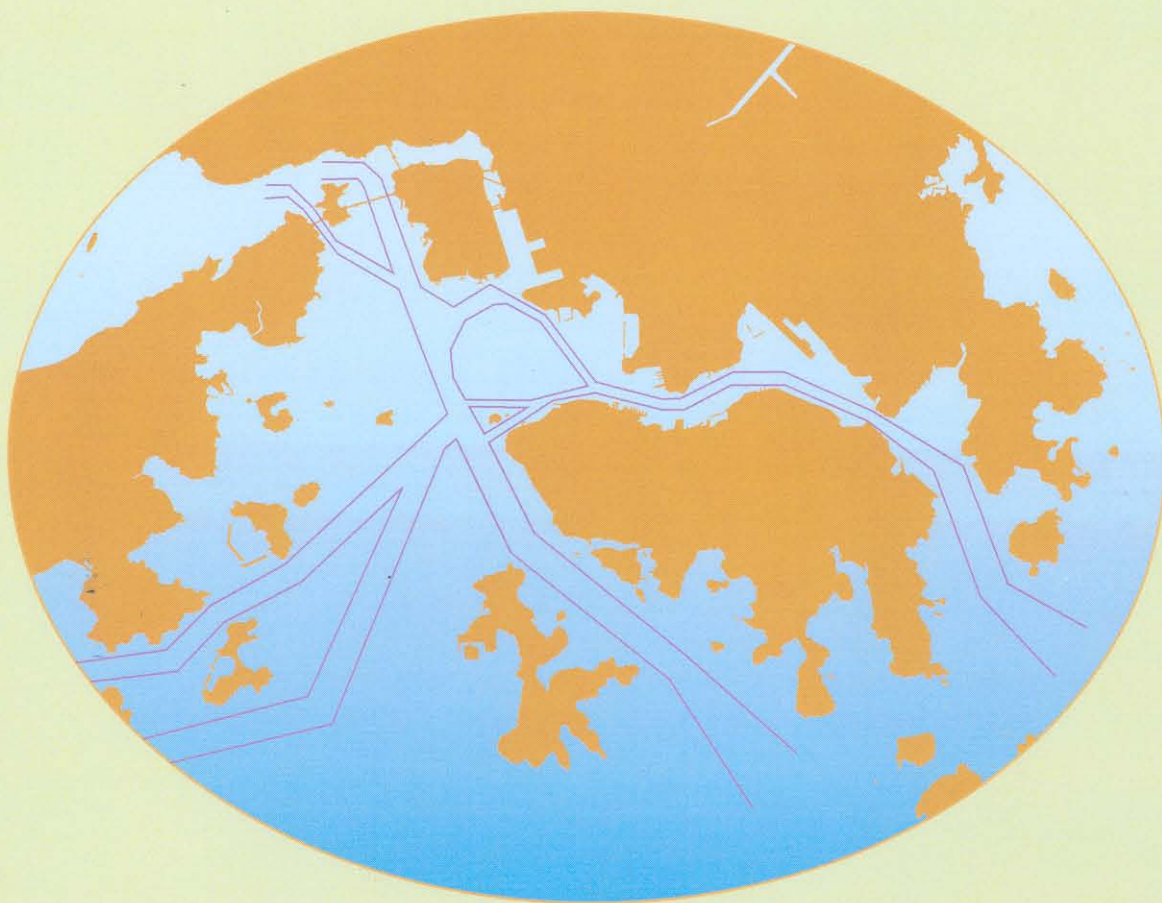


香港港口統計年報

2009

Port of Hong Kong
Statistical Tables



中華人民共和國香港特別行政區海事處
Marine Department
Hong Kong Special Administrative Region
People's Republic of China

香 港 港 口
PORT OF HONG KONG
統 計 年 報
STATISTICAL TABLES
2009

有關本刊物的查詢，請聯絡：

海事處 策劃、發展協調及港口保安部 統計組

地址：中國香港中環統一碼頭道 38 號海港政府大樓 23 樓 2307 室

電話：(852) 2852 3660 圖文傳真：(852) 2542 4638

電子郵遞：st-sec@mardep.gov.hk

Enquiries about this publication can be directed to:

Statistics Section

Planning, Development & Port Security Branch

Marine Department

Address: Room 2307, 23/F, Harbour Building,

38 Pier Road, Central, Hong Kong, China.

Tel. No.: (852) 2852 3660 Fax. No.: (852) 2542 4638

E-mail: st-sec@mardep.gov.hk

政府海事處網頁

Home Page of the Marine Department

<http://www.mardep.gov.hk/>

同心協力，促進卓越海事服務

We are One in Promoting Excellence in Marine Services

目錄 CONTENTS

如欲進入統計表／附錄，請按下有關的藍色項目

To view the statistical tables/appendices, please click
the item in blue

	頁數 Page No.
註釋 EXPLANATORY NOTES	iv - vii
摘要 SUMMARY	viii
2004 至 2009 年 主要港口統計數字及每年增長率 Principal Port Statistics for 2004 - 2009 and Annual Growth Rates	
第一部 - 港口活動 PART I - Port Activities	
<i>抵港/離港的船次</i> <i>Vessel Arrivals/Departures</i>	
表 1 . 2009 年 按主要停泊地點分析抵港遠洋輪船的船次 TABLE 1 . Ocean Vessel Arrivals by Main Berthing Location, 2009	1
表 2 . 2009 年 按主要停泊地點分析離港遠洋輪船的船次 TABLE 2 . Ocean Vessel Departures by Main Berthing Location, 2009	1
表 3 . 2009 年 按船舶類型分析抵港船舶的船次 TABLE 3 . Vessel Arrivals by Ship Type, 2009	2
表 4 . 2009 年 按船旗分析抵港船舶的船次 TABLE 4 . Vessel Arrivals by Flag, 2009	3 - 4
表 5 . 2009 年 按船旗分析曾停靠香港的船舶數目和淨註冊噸位 TABLE 5 . Number and NRT of Vessels Calling Hong Kong by Flag, 2009	5 - 6
表 6 . 2009 年 按船舶類型分析離港船舶的平均在港停留時間 TABLE 6 . Average Time in Port for Vessels Departing Hong Kong by Ship Type, 2009	7
表 7 . 2009 年在貨櫃碼頭處理貨櫃的遠洋輪船統計資料 TABLE 7 . Statistics on Ocean Vessels with Containers Handled in Container Terminals, 2009	8
表 8 . 2009 年 按夏季吃水分析抵港遠洋輪船的船次 TABLE 8 . Ocean Vessel Arrivals by Summer Draft, 2009	9
表 9 . 2009 年 按船舶長度分析抵港遠洋輪船的船次 TABLE 9 . Ocean Vessel Arrivals by Vessel Length, 2009	9
表 10 . 2009 年 按主要來港原因分析抵港遠洋輪船的船次 TABLE 10 . Ocean Vessel Arrivals by Main Reason of Call, 2009	10
表 11 . 2009 年 按停泊地點及有否指定行程分析郵輪抵港船次 TABLE 11 . Cruise Arrivals by Berthing Location by Whether the Trip with Itinerary, 2009	11
表 12 . 2009 年 跨境客運碼頭的抵港及離港航次統計資料 TABLE 12 . Statistics on Vessel Arrivals and Departures at Cross-Boundary Ferry Terminals, 2009	12
表 13 . 2009 年 按船舶類型分析香港過境船舶的船次 TABLE 13 . Number of Vessel Trips Transit Hong Kong by Ship Type, 2009	13

客運量

Passenger Throughput

表 14 . 2009 年 按跨境客運碼頭分析客運量	
TABLE 14 . Passenger Throughput by Cross-Boundary Ferry Terminals, 2009	14
表 15 . 2009 年 按航線分析抵港及離港乘客人次	
TABLE 15 . Passenger Arrivals and Departures by Routes, 2009	15 - 16

貨櫃/貨物吞吐量

Container/Cargo Throughput

表 16 . 2009 年 按主要貨物裝卸地點分析貨櫃吞吐量	
TABLE 16 . Container Throughput by Main Cargo Handling Location, 2009	17
表 17 . 2009 年 按貨櫃碼頭以外的主要貨物裝卸地點分析裝卸的貨櫃	
TABLE 17 . Containers Discharged/Loaded at Main Cargo Handling Locations Other than Container Terminals, 2009	18
表 18 . 2009 年 按貨物種類及運輸方式劃分的裝卸港口貨物	
TABLE 18 . Port Cargo Discharged/Loaded by Cargo Type and Mode of Transport, 2009	19

第二部 - 港口服務及管理
PART II - Port Services and Control

表 19 . 海港繫泊浮泡統計資料	
TABLE 19 . Harbour Mooring Buoys Statistics	20
表 20 . 2009 年 按分佈地點分析香港私用繫泡數目	
TABLE 20 . Number of Private Moorings Laid in Hong Kong by Location, 2009	21 - 22
表 21 . 碇泊處一覽	
TABLE 21 . List of Anchorages	23 - 24
表 22 . 避風塘一覽	
TABLE 22 . List of Typhoon Shelters	25
表 23 . 公眾貨物裝卸區一覽	
TABLE 23 . List of Public Cargo Working Areas	26
表 24 . 垃圾收集、油污和檢控個案統計資料	
TABLE 24 . Refuse Collection, Oil Pollution and Prosecution Statistics	27
表 25 . 2009 年底 按噸位等級分析香港持牌船舶	
TABLE 25 . Hong Kong Licensed Vessels by Tonnage Classification, as at year end 2009	28 - 29

	頁數 Page No.
第三部 - 船舶服務 PART III - Shipping Services	
表 26 . 船舶安全監督統計資料 TABLE 26 . Ship Safety Statistics	30 - 32
表 27 . 本地船隻安全統計資料 TABLE 27 . Local Vessels Safety Statistics	33 - 38
表 28 . 海員發證、註冊和僱用統計資料 TABLE 28 . Seafarers' Certification, Registration and Employment Statistics	39 - 44
表 29 . 香港註冊船舶統計資料 TABLE 29 . Statistics on Ships Registered in Hong Kong	45 - 46
表 30 . 政府船隊統計資料 TABLE 30 . Government Fleet Statistics	47
表 31 . 政府船舶所屬部門及可用率情況 (2009 年 12 月 31 日) TABLE 31 . Departmental Ownership and Availabilities of Government Vessels (as at 31 December 2009)	48
第四部 - 附錄 PART IV - Appendices	
A . 海事處組織架構圖 Marine Department Organization Chart	A1
B . 海事處的編制和實際員額 (截至 2009 年 12 月 31 日) Marine Department Establishment and Strength (as at 31 December 2009)	A2 - A5
C . 2009 年 海事處訓練組舉辦的課程 Training Courses Conducted by Training Section, Marine Department in 2009	A6 - A7
D . 2009 年 海事處訪客 Visitors of the Marine Department, 2009	A8 – A10
E . 2009 年 新訂海事法例 New Maritime Legislation, 2009	A11
F . 2009 年 輔航設備 Aids to Navigation, 2009	A12 – A18

1. 簡介

《香港港口統計年報》是香港海事處編制的港口及海事統計資料一覽表。

這本年報輯錄以下統計數字和資料：-

- 抵港/離港的船次
- 客運量
- 貨櫃/貨物吞吐量
- 港口服務及管理
- 船舶服務
- 海事處組織架構圖
(編制和實際員額)
- 海事處舉辦的課程
- 海事處訪客
- 新訂海事法例
- 輔航設備

2. 資料來源

船舶進出口統計

船舶進出口統計資料乃根據船公司或代理人向海事處申報船舶抵達/離開港口的資料時所遞交的申報表(MO 618 及 MO 618A)編製而成。(摘要、表一至十)

貨櫃統計資料

在貨櫃碼頭裝運的貨櫃統計資料，主要由碼頭經營者提供。不在貨櫃碼頭裝運的遠洋輪船「空」貨櫃統計資料，由海事處根據申報表 MO 618 及 MO 618A 編製。所有其他詳細的貨櫃統計資料，皆由政府統計處根據貨物艙單抽樣編製而成。(摘要、表十六至十七)

停泊/貨物裝卸地點

有關遠洋輪船的主要貨物裝卸區和主要停泊地點的資料，均取自海事處船舶交通管理系統所保存的船舶活動報告。(表一至二、表七、表十六至十八)

1. Introduction

The *Port of Hong Kong Statistical Tables* is a collection of Hong Kong Port and Maritime Statistics compiled by the Marine Department.

The publication brings together the following statistics and information: -

- Vessels Arrivals/Departures
- Passenger Throughput
- Container/Cargo Throughput
- Port Services and Control
- Shipping Services
- Marine Department Organization Chart
(Establishment and Strength)
- Training Courses Conducted by Marine Department
- Visitors to Marine Department
- New Maritime Legislation
- Aids to Navigation

2. Data Sources

Vessel Statistics

Vessel statistics are based on the declaration forms (MO 618 & MO 618A) submitted to Marine Department by shipping companies/agents for declaring arrivals/departures of vessels under their charge. (**Summary Table, Tables 1 – 10**)

Container Statistics

Statistics on container throughput handled at Container Terminals are mainly obtained from the terminal operators. Statistics on empty containers (ocean) handled at locations other than Container Terminals are compiled by Marine Department based on the declaration forms of MO 618 and MO 618A. As for all the other detailed container throughput statistics, they are compiled by Census and Statistics Department based on sampling of data in cargo manifests. (**Summary Table, Tables 16 – 17**)

Berthing/Cargo Handling Location

Information on the main cargo handling location and main berthing location in respect of ocean vessels are extracted from the trip activity report kept in the Marine Department's Vessel Traffic Management System. (**Tables 1 – 2, 7, 16 – 18**)

3. 用語及分類

容量

在本報告中，船舶的容量是以淨註冊噸位(計算單位為淨註冊噸)來表示。淨註冊噸位是由一艘船的船殼內的容量(以立方呎計)，加上在甲板上用以裝載貨物、貯藏品及乘客的空間，再減去船長、高級船員、船員所住的地方、燃料、導航及推進器所佔用的地方。每一淨註冊噸相等於一百立方呎的容量。

貨物裝卸地點

在本報告中，貨物裝卸地點的分類是「貨櫃碼頭」、「泊位和倉庫碼頭(包括公眾貨物裝卸區)」、「碇泊處」和「浮泡」。

貨櫃吞吐量

這是指以標準貨櫃單位計算的貨櫃搬運數目。一個標準貨櫃單位等同一個二十呎貨櫃的容量。

船旗

這是指船舶的國籍，表明其正式註冊的地方。香港在一九九二年正式開始船舶註冊制度。一九九七年七月一日起，香港特別行政區經中央人民政府授權繼續進行船舶註冊，並根據香港特別行政區的法律以「中國香港」的名義頒發有關證件。

內河航限

內河航限是指香港鄰近水域，一般指香港與珠江、大鵬灣及澳門，及其他在廣東和廣西與香港鄰近水域相連的內陸水域。內河航限的精確定義是指以下範圍內的水域：

- 東至東經 114°30'；
- 南至北緯 22°09'；及
- 西至東經 113°31'。

船舶類型

這是指船舶的特定用途，分為十八類：化學品運載船、普通貨船、散裝乾貨船、漁船/魚類加工船、全槽格式貨櫃船、液化氣體運載船、躉船/駁船/貨艇、礦沙/散貨/油類混用船、油輪、客輪(郵船)、客輪(定期)、遊樂船舶、滾裝卸式船、半貨櫃船、拖船、其他貨船、其他液體船及其他。

3. Terms and Classifications

Capacity

In this report, the capacity of a vessel is expressed in terms of net registered tonnage (the unit of measurement is net registered ton, NRT). Net registered tonnage (NRT) is, broadly, the capacity of a ship in cubic feet of the space within the hull, and of the enclosed space above the deck available for cargo, stores and passengers but excluding space used for the accommodation of the master, officers, crew, fuel, navigation and propelling machinery. One net registered ton is equivalent to 100 cubic feet of capacity.

Cargo Handling Location

The types of cargo handling location shown in this report are “container terminals”, “berths and wharves (including public cargo working areas)”, “anchorage” and “buoys”.

Container Throughput

This refers to the number of movement of cargo containers in TEU terms. A TEU stands for a twenty-foot equivalent unit.

Flag

This is the nationality of the vessel, indicating where she is officially registered. In Hong Kong, the official vessel registration system was set up in 1992. As from 1.7.1997, the Hong Kong Special Administrative Region is authorized by the Central People's Government to continue to maintain a shipping register and issue related certificates under its legislation, using the name 'Hong Kong, China'.

River Trade Limits

River trade limits mean the waters in the vicinity of Hong Kong, which broadly include the Pearl River, Mirs Bay and Macao, and other inland waters in Guangdong and Guangxi which are accessible from waters in the vicinity of Hong Kong. The precise definition of River Trade Limits refer to waters within the following boundaries:

- to the East, meridian 114°30' East;
- to the South, parallel 22°09' North; and
- to the West, meridian 113°31' East.

Ship Type

This refers to the known specific function of the ship. Eighteen types of ship are distinguished: chemical carrier/tanker, conventional cargo vessel, dry bulk carrier, fishing/fish processing vessel, fully cellular container vessel, gas carrier/tanker, lighter/barge/cargo junk, ore/bulk/oil carrier, oil tanker, passenger vessel (cruising), passenger vessel (schedule), pleasure vessel, roll on/roll off, semi-container vessel, tug, other cargo vessel, other fluid carrier and others.

4. 資料定義

內河船隻

根據《船舶及港口管制條例》(第 313 章)所訂，內河船隻是指進出香港與內河航限內的港口之間的船舶。(摘要、表三至六)

停泊地點

船舶在進入香港水域後可能停泊超過一個停泊地點。若船舶來港的主要原因是裝卸貨物，則主要的貨物裝卸地點和主要的停泊地點是指最為昂貴的地點，當中以貨櫃碼頭居首位，隨後是泊位和倉庫碼頭(包括公眾貨物裝卸區)、碇泊處和浮泡。若船舶來港的主要原因不是裝卸貨物，主要停泊地點為停留時間最長的地點。(表一至二、表七、表十六和十七)

內河客船

內河客船的抵港次數是指船舶停泊於港澳客運碼頭、中國客運碼頭、屯門客運碼頭和海天客運碼頭的次數。(摘要、表三至五)

停泊於這四個碼頭的船次與實際的抵港船次會有輕微偏差，因為船舶可能在同一次航程中停泊超過一個客運碼頭。

5. 資料限制

遠洋客船數字包括在內河航限以外水域行駛的遊樂船舶。但是，由於有些船主/代理人沒有申報這些船舶的淨註冊噸位資料給海事處，故遠洋客船的淨註冊噸位數字可能輕微低於實際的數字。(摘要、表一至五)

由於不能準確地統計本地持牌遊樂船舶和漁船來往香港及內河航限內的船次，故這兩類船舶沒有包括在內河船隻統計範圍內。(摘要、表三至六)

6. 計量單位

DWT = 載重(噸)
GRT = 總註冊噸位
LOA = 船總長度
NRT = 淨註冊單位
TEU = 二十呎標準貨櫃單位

4. Data Definitions

River Vessels

In accordance with the Shipping and Port Control Ordinance, Cap. 313, Laws of Hong Kong, river vessels refer to those travelling between Hong Kong and ports that are within the river trade limits. (Summary Table, Tables 3 – 6)

Berthing Locations

A vessel may berth at more than one locations after entering into Hong Kong waters. If the main reason of call of the vessel is for loading/discharging cargo, both the main cargo handling location and the main berthing location refer to the most costly location, with Container Terminals ranked first, followed by Berths and Wharves (including Public Cargo Working Areas), Anchorages and Buoys. If the main reason of call is not for loading/discharging cargo, the main berthing location refers to the one with the longest stay. (Tables 1 – 2, 7, 16 and 17)

River Passenger Vessels

The figures on arrivals of river passenger vessels refer to the number of berthings at the Macau Ferry Terminal, the China Ferry Terminal, the Tuen Mun Ferry Terminal and the SkyPier. (Summary Table, Tables 3 – 5)

The number of berthings at these 4 terminals are slightly different from the actual number of arrivals because a ship may berth at more than one terminal in a single trip.

5. Data Limitations

The number of ocean passenger vessels includes pleasure vessels plying beyond the river trade limits. However, as some of their owners/agents do not report NRT information to Marine Department, the total NRT for ocean passenger vessels may be slightly under-reported. (Summary Table, Tables 1 – 5)

As accurate number of trips of locally licensed pleasure vessels and fishing vessels plying between Hong Kong and the river trade limits is not available, these two categories of vessels are not included in the river vessel statistics. (Summary Table, Tables 3 – 6)

6. Units of Measurement

DWT = Deadweight [Tonnage]
GRT = Gross Registered Tonnage
LOA = Length Overall
NRT = Net Registered Tonnage
TEU = Twenty-foot Equivalent Unit

7. 數字的捨入

客運統計數字、淨註冊噸位、貨物和貨櫃吞吐量是計算至最接近的千位。

項目	單位
客運數目	千位
貨物吞吐量	千公噸
貨櫃吞吐量	千個標準貨櫃單位
淨註冊單位	千噸

由於進位關係，本報告中所列的個別數字之和可能不等於其總數。但變動百分率和比重百分率則以未經進位的數字計出。

8. 代號

- () 與去年同期比較的變動百分率
- ※ 多於 1000%
- 0 少於 0.05%
- † 少於 500 個標準貨櫃單位；
少於 500 人次；
少於 500 噸
- # 臨時數字
- * 修訂數字
- { } 年底時的估計數字
- N.A. 沒有數字
- 不適用

7. Rounding of Figures

Statistics on passenger statistics, net register tonnage, cargo and container throughput are rounded to the nearest thousand.

Items	Units
Passenger Statistics	thousand units
Cargo Throughput	'000 tonnes
Container Throughput	'000 TEUs
NRT	'000 tons

Figures shown in this report may not add up to the respective totals due to rounding. However, percentage changes and percentage shares are calculated from unrounded figures.

8. Symbols

- () % changes over the same period of preceding year
- ※ More than 1000%
- 0 Less than 0.05%
- † Less than 500 TEUs;
Less than 500 passengers;
Less than 500 tonnes
- # Provisional figures
- * Revised figures
- { } Estimates as at year end
- N.A. Not available
- Not applicable

策劃、發展協調及港口保安部
統計組

二零一零年四月

Statistics Section
Planning, Development & Port Security Branch

April 2010

摘要
SUMMARY

2004 至 2009 年主要港口統計數字及每年增長率
Principal Port Statistics for 2004 – 2009 and Annual Growth Rates

項目 Item	2004	2008	2009	每年增長率 Annual Growth Rates		
				2008-2009	2004-2009 ⁽¹⁾	
1. 抵港船次 Number of Vessel Arrivals	225 426	217 362	205 505	-5.5%	-1.8%	
(a) 遠洋輪船 貨船 客船	Ocean Vessel Cargo Vessel Passenger Vessel	35 901 32 537 3 364	35 853 32 854 2 999	33 157 30 684 2 473	-7.5% -6.6% -17.5%	-1.6% -1.2% -6.0%
(b) 內河船隻 貨船 客船 ⁽²⁾	River Vessel Cargo Vessel Passenger Vessel ⁽²⁾	189 525 117 544 71 981	181 509 100 613 80 896	172 348 89 750 82 598	-5.0% -10.8% +2.1%	-1.9% -5.3% +2.8%
2. 抵港船舶的淨註冊噸位 (千噸) N.R.T. of Vessel Arrivals ('000 tons)	399 031	483 064	475 074	-1.7%	+3.6%	
(a) 遠洋輪船 (b) 內河船隻 ⁽²⁾	Ocean Vessel River Vessel ⁽²⁾	307 713 91 318	385 426 97 638	377 791 97 284	-2.0% -0.4%	+4.2% +1.3%
3. 貨櫃吞吐量 (千個標準貨櫃單位) Container Throughput ('000 TEUs)	21 984	24 494	21 040	-14.1%	-0.9%	
(i) 按停泊地點分析 貨櫃碼頭 貨櫃碼頭以外	By Berthing Location Container Terminals Other than Container Terminals	13 425 8 559	17 726 6 769	15 159 5 881	-14.5% -13.1%	+2.5% -7.2%
(ii) 按運輸方式分析 遠洋 內河	By Mode of Transport Ocean River	15 475 6 509	17 075 7 419	14 085 6 955	-17.5% -6.3%	-1.9% +1.3%
4. 貨物吞吐量 (千公噸) Cargo Throughput ('000 tonnes)	220 879	259 402	242 967	-6.3%	+1.9%	
(a) 海運 (b) 河運	Seaborne River	158 617 62 262	179 974 79 428	161 591 81 376	-10.2% +2.5%	+0.4% +5.5%
5. 港澳客運碼頭、中國客運碼頭及屯門客運碼頭的渡輪客運量 (千位) Total Passenger Throughput for the Ferry Berthing at MFT, CFT and TMFT ('000)	19 181	24 195	22 160	-8.4%	+2.9%	
(a) 澳門 (b) 中國內地 (c) 其他	Macau Mainland China Others	11 885 7 057 238	18 572 5 310 314	17 521 4 366 273	-5.7% -17.8% -12.8%	+8.1% -9.2% +2.8%

備註： 由於進位關係，本摘要中所列的個別數字之和可能不等於其總數。

Remark: Figures shown in this summary may not add up to the respective totals due to rounding.

註釋： (1) 複合平均增長率

(2) 由二零零七年開始，數字不包括非載客的跨境渡輪船次。

Notes: (1) Average annual compound growth rate

(2) As from 2007, non-passenger carrying trips of cross boundary ferry are excluded.

統計表
Statistical
Tables

表 1
TABLE 1

2009 年按主要停泊地點分析抵港遠洋輪船的船次
Ocean Vessel Arrivals by Main Berthing Location, 2009

主要停泊地點 Main Berthing Location	主要船舶類別 Main Vessel Category								總計 Total			
	貨船 Cargo Vessels				客船 Passenger Vessels							
	抵港船次 No. of Vessel Arrivals		淨註冊噸位 (千噸) NRT ('000)		抵港船次 No. of Vessel Arrivals		淨註冊噸位 (千噸) NRT ('000)		抵港船次 No. of Vessel Arrivals		淨註冊噸位 (千噸) NRT ('000)	
	(%)		(%)		(%)		(%)		(%)		(%)	
貨櫃碼頭 Container Terminals	12 133	(-10.0)	257 363	(-2.0)	2	(-50.0)	149	(-17.3)	12 135	(-10.1)	257 512	(-2.0)
泊位和倉庫碼頭 Berths and Wharves	4 010	(-14.2)	12 577	(-25.6)	1 146	(-15.2)	15 991	(-26.1)	5 156	(-14.4)	28 568	(-25.9)
碇泊處 Anchorages	14 336	(-0.2)	82 250	(+12.7)	172	(+50.9)	1 289	(+97.5)	14 508	(+0.2)	83 539	(+13.5)
浮泡 Buoys	205	(-36.7)	724	(-44.4)	1 153	(-24.6)	7 449	(-18.5)	1 358	(-26.8)	8 173	(-21.8)
總計 Total	30 684	(-6.6)	352 913	(-0.3)	2 473	(-17.5)	24 877	(-21.3)	33 157	(-7.5)	377 791	(-2.0)

表 2
TABLE 2

2009 年按主要停泊地點分析離港遠洋輪船的船次
Ocean Vessel Departures by Main Berthing Location, 2009

主要停泊地點 Main Berthing Location	主要船舶類別 Main Vessel Category								總計 Total			
	貨船 Cargo Vessels				客船 Passenger Vessels							
	離港船次 No. of Vessel Departures		淨註冊噸位 (千噸) NRT ('000)		離港船次 No. of Vessel Departures		淨註冊噸位 (千噸) NRT ('000)		離港船次 No. of Vessel Departures		淨註冊噸位 (千噸) NRT ('000)	
	(%)		(%)		(%)		(%)		(%)		(%)	
貨櫃碼頭 Container Terminals	12 202	(-11.7)	261 300	(-3.7)	2	(-50.0)	149	(-17.3)	12 204	(-11.7)	261 449	(-3.7)
泊位和倉庫碼頭 Berths and Wharves	4 252	(-11.0)	11 903	(-13.7)	1 149	(-15.3)	16 059	(-26.4)	5 401	(-12.0)	27 962	(-21.5)
碇泊處 Anchorages	14 195	(+1.2)	77 269	(+20.2)	210	(+22.1)	1 290	(+97.7)	14 405	(+1.5)	78 559	(+21.0)
浮泡 Buoys	169	(-38.3)	623	(-45.7)	1 152	(-25.4)	7 438	(-19.4)	1 321	(-27.3)	8 062	(-22.3)
總計 Total	30 818	(-6.3)	351 096	(+0.1)	2 513	(-18.3)	24 936	(-21.8)	33 331	(-7.3)	376 032	(-1.7)

表3
TABLE 3

2009年按船舶類型分析抵港船舶的船次
Vessel Arrivals by Ship Type, 2009

船舶類型 Ship Type	遠洋輪船 Ocean Vessels		內河船隻 River Vessels		總計 Total	
	抵港船次 No. of Vessel Arrivals	比重 百分率 Percentage Share	抵港船次 No. of Vessel Arrivals	比重 百分率 Percentage Share	抵港船次 No. of Vessel Arrivals	比重 百分率 Percentage Share
	(%)		(%)		(%)	
運車船 Car Carrier	25 (+25.0)	0.1%	4 (0)	0%	29 (+20.8)	0%
化學品運載船 Chemical Carrier/Tanker	420 (-2.6)	1.3%	227 (+6.6)	0.1%	647 (+0.5)	0.3%
普通貨船 Conventional Cargo Vessel	5 951 (+15.5)	17.9%	12 543 (-7.6)	7.3%	18 494 (-1.2)	9.0%
其他貨船 Other Cargo Vessel	0 (0)	0%	179 (-17.1)	0.1%	179 (-17.1)	0.1%
郵船/渡輪 Cruise/Ferry	2 345 (-19.3)	7.1%	82 598 (+2.1)	47.9%	84 943 (+1.4)	41.3%
散裝乾貨船 Dry Bulk Carrier	1 222 (-1.1)	3.7%	2 017 (+34.9)	1.2%	3 239 (+18.6)	1.6%
漁船/魚類加工船 Fishing/Fish Processing Vessel	331 (0)	1.0%	-	-	331 (0)	0.2%
全槽格式貨櫃船 Fully Cellular Container Vessel	20 061 (-11.7)	60.5%	60 343 (-8.4)	35.0%	80 404 (-9.3)	39.1%
液化氣體運載船 Gas Carrier/Tanker	381 (+2.1)	1.1%	28 (+86.7)	0%	409 (+5.4)	0.2%
駁船/躉船/貨艇 Lighter/Barge/Cargo Junk	51 (-59.5)	0.2%	6 825 (-28.2)	4.0%	6 876 (-28.6)	3.3%
礦沙散貨油類混用船 OBO (Ore, Bulk, Oil) Carrier	6 (+500.0)	0%	0 (0)	0%	6 (+500.0)	0%
油輪 Oil Tanker	1 344 (-3.2)	4.1%	1 018 (-8.8)	0.6%	2 362 (-5.7)	1.1%
其他液體運載船 Other Fluid Carrier	0 (0)	0%	2 (+100.0)	0%	2 (+100.0)	0%
遊樂船舶 Pleasure Vessel	131 (+26.0)	0.4%	-	-	131 (+26.0)	0.1%
滾裝卸式船 Roll On/Roll Off	377 (-30.3)	1.1%	26 (+116.7)	0%	403 (-27.1)	0.2%
半貨櫃船 Semi-container Vessel	182 (+22.1)	0.5%	1 816 (+14.5)	1.1%	1 998 (+15.2)	1.0%
拖船 Tug	153 (-33.8)	0.5%	4 626 (-29.9)	2.7%	4 779 (-30.0)	2.3%
其他 Others	177 (+27.3)	0.5%	96 (-74.6)	0%	273 (-48.3)	0.1%
總計 Total	33 157 (-7.5)	100.0%	172 348 (-5.0)	100.0%	205 505 (-5.5)	100.0%

表 4
TABLE 4

2009 年按船旗分析抵港船舶的船次
Vessel Arrivals by Flag, 2009

船旗 Flag	遠洋輪船 Ocean Vessels		內河船隻 River Vessels		總計 Total	
	抵港船次 No. of Vessel Arrivals	淨註冊噸位 (千噸位) NRT ('000)	抵港船次 No. of Vessel Arrivals	淨註冊噸位 (千噸位) NRT ('000)	抵港船次 No. of Vessel Arrivals	淨註冊噸位 (千噸位) NRT ('000)
	(%)	(%)	(%)	(%)	(%)	(%)
安提瓜和巴布達 Antigua and Barbuda	716 (-16.4)	8 498 (+1.8)	44 (-4.3)	419 (-33.4)	760 (-15.7)	8 917 (-0.7)
巴哈馬 Bahamas	1 150 (-20.0)	20 366 (+23.4)	23 (-46.5)	392 (-67.4)	1 173 (-20.7)	20 758 (+17.2)
伯利茲 Belize	80 (-41.6)	139 (-12.5)	18 (+20.0)	29 (+65.1)	98 (-35.5)	169 (-4.7)
柬埔寨 Cambodia	191 (-15.9)	376 (-21.0)	34 (+21.4)	69 (-13.1)	225 (-11.8)	445 (-19.8)
中國內地 Mainland China	6 156 (-12.3)	12 065 (-8.5)	105 848 (-8.2)	51 319 (-1.7)	112 004 (-8.5)	63 383 (-3.1)
賽浦路斯 Cyprus	637 (+9.8)	8 391 (+2.9)	93 (+165.7)	912 (+6.8)	730 (+18.7)	9 303 (+3.3)
丹麥 Denmark	309 (+13.6)	15 271 (+17.2)	10 (-50.0)	282 (-58.5)	319 (+9.2)	15 554 (+13.4)
法國 France	94 (-18.3)	3 873 (-19.4)	5 (-87.5)	188 (-88.1)	99 (-36.1)	4 061 (-36.5)
德國 Germany	864 (-10.8)	24 946 (-8.7)	51 (+41.7)	1 341 (+42.2)	915 (-9.0)	26 287 (-7.0)
希臘 Greece	190 (-1.0)	6 519 (+6.4)	20 (+81.8)	718 (+199.5)	210 (+3.4)	7 238 (+13.6)
香港 Hong Kong	2 385 (-4.8)	33 260 (+3.3)	64 612 (+0.7)	23 349 (+4.2)	66 997 (+0.5)	56 609 (+3.7)
意大利 Italy	169 (+10.5)	4 024 (+24.0)	4 (+33.3)	118 (+93.4)	173 (+10.9)	4 142 (+25.3)
日本 Japan	59 (-27.2)	1 353 (-25.2)	2 (+100.0)	44 (+100.0)	61 (-25.6)	1 397 (-23.7)
基里巴斯共和國 Republic of Kiribati	333 (※)	2 784 (※)	20 (+233.3)	41 (+427.0)	353 (※)	2 825 (※)
南韓 Republic of Korea	737 (-18.2)	4 877 (-6.8)	107 (-38.5)	453 (-2.0)	844 (-21.5)	5 329 (-6.4)
利比里亞 Liberia	2 983 (-10.5)	55 949 (-5.0)	181 (-10.4)	3 071 (-17.4)	3 164 (-10.5)	59 019 (-5.7)
馬來西亞 Malaysia	107 (-50.2)	1 614 (-26.6)	8 (-65.2)	147 (-19.8)	115 (-51.7)	1 760 (-26.1)

表 4 – 續
TABLE 4 – Cont'd

船旗 Flag	遠洋輪船 Ocean Vessels		內河船隻 River Vessels		總計 Total	
	抵港船次 No. of Vessel Arrivals	淨註冊噸位 (千噸位) NRT ('000)	抵港船次 No. of Vessel Arrivals	淨註冊噸位 (千噸位) NRT ('000)	抵港船次 No. of Vessel Arrivals	淨註冊噸位 (千噸位) NRT ('000)
	(%)	(%)	(%)	(%)	(%)	(%)
馬耳他 Malta	193 (-16.1)	3 755 (+32.0)	25 (+25.0)	441 (+78.9)	218 (-12.8)	4 195 (+35.8)
荷蘭 Netherlands	121 (-12.9)	1 461 (-42.2)	2 (-71.4)	5 (-96.4)	123 (-15.8)	1 466 (-45.0)
巴拿馬 Panama	7 449 (-15.4)	99 205 (-11.8)	762 (-19.5)	9 239 (+14.8)	8 211 (-15.8)	108 445 (-10.0)
新加坡 Singapore	2 291 (+5.7)	29 283 (+17.6)	173 (+45.4)	1 893 (+59.9)	2 464 (+7.8)	31 176 (+19.6)
聖文森特和 格林納丁斯 St. Vincent and the Grenadines	120 (-19.5)	841 (-14.2)	15 (-21.1)	80 (-51.6)	135 (-19.6)	921 (-19.6)
台灣 Taiwan	3 528 (+36.4)	2 678 (-5.0)	7 (-)	78 (-)	3 535 (+36.6)	2 756 (-2.3)
泰國 Thailand	134 (-23.0)	769 (-11.8)	10 (+150.0)	27 (+152.3)	144 (-19.1)	797 (-9.8)
英國 United Kingdom	753 (-2.3)	20 785 (+11.5)	47 (+38.2)	1 288 (+63.0)	800 (-0.6)	22 073 (+13.6)
馬紹爾群島 Marshall Islands	716 (-6.8)	8 136 (+0.5)	57 (+29.5)	668 (+20.3)	773 (-4.8)	8 804 (+1.8)
越南 Vietnam	226 (+5.6)	914 (+25.3)	11 (+10.0)	35 (-50.8)	237 (+5.8)	949 (+18.5)
其他 ⁽¹⁾ Others ⁽¹⁾	466 (-8.3)	5 659 (-20.5)	159 (+63.9)	637 (-29.5)	625 (+3.3)	6 296 (-21.5)
總計 Total	33 157 (-7.5)	377 791 (-2.0)	172 348 (-5.0)	97 284 (-0.4)	205 505 (-5.5)	475 074 (-1.7)

※ 多於 1000%

※ More than 1000%

註釋： (1) 包括所有在二零零九年抵港船次總數少於五十船次的旗號。

Note: (1) Including those flags of which their total number of vessel arrivals were less than 50 in 2009.

表 5
TABLE 5

2009 年按船旗分析曾停靠香港的船舶數目和淨註冊噸位
Number and NRT of Vessels Calling Hong Kong by Flag, 2009

船旗 Flag	遠洋輪船 Ocean Vessels				內河船隻 River Vessels			
	船舶數目 Number of Vessels		淨註冊噸位 (千噸) NRT ('000)		船舶數目 Number of Vessels		淨註冊噸位 (千噸) NRT ('000)	
		(%)		(%)		(%)		(%)
安提瓜和巴布達 Antigua and Barbuda	124	(-5.3)	1 282	(-1.4)	29	(-14.7)	308	(-25.3)
巴哈馬 Bahamas	116	(-11.5)	2 456	(-2.3)	18	(-5.3)	291	(-32.3)
伯利茲 Belize	30	(-18.9)	54	(+7.0)	11	(+83.3)	18	(+82.0)
柬埔寨 Cambodia	60	(-21.1)	146	(-16.8)	24	(+41.2)	49	(+2.4)
中國內地 Mainland China	405	(+2.0)	3 295	(+26.3)	1 313	(-5.0)	2 107	(+26.7)
塞浦路斯 Cyprus	125	(+9.6)	1 994	(-1.8)	34	(+41.7)	537	(-4.0)
丹麥 Denmark	58	(-6.5)	2 544	(+1.8)	9	(-50.0)	231	(-59.8)
法國 France	25	(+13.6)	997	(+18.0)	3	(-72.7)	113	(-73.6)
德國 Germany	185	(+14.9)	5 096	(+17.9)	40	(+60.0)	1 029	(+64.1)
希臘 Greece	71	(+51.1)	2 377	(+80.9)	17	(+70.0)	579	(+157.1)
香港 Hong Kong	518	(+14.3)	7 174	(+19.9)	642	(-3.5)	2 516	(+7.0)
印度 India	22	(-4.3)	486	(+14.2)	4	(-33.3)	68	(-28.7)
意大利 Italy	29	(+7.4)	735	(+27.3)	4	(+100.0)	118	(+158.2)
基里巴斯共和國 Republic of Kiribati	25	(+316.7)	72	(+829.5)	13	(+550.0)	24	(+808.5)
南韓 Republic of Korea	163	(-0.6)	1 254	(+37.7)	55	(+3.8)	235	(-2.1)
利比里亞 Liberia	538	(+1.5)	11 533	(+7.0)	117	(+5.4)	2 273	(+12.6)
馬來西亞 Malaysia	53	(+1.9)	650	(-5.5)	7	(-61.1)	124	(+12.9)
馬耳他 Malta	95	(+33.8)	1 854	(+58.1)	24	(+20.0)	415	(+68.4)

表 5 – 續
TABLE 5 – Cont'd

船旗 Flag	遠洋輪船 Ocean Vessels				內河船隻 River Vessels			
	船舶數目 Number of Vessels		淨註冊噸位 (千噸) NRT ('000)		船舶數目 Number of Vessels		淨註冊噸位 (千噸) NRT ('000)	
		(%)		(%)		(%)		(%)
荷蘭 Netherlands	31	(-22.5)	499	(-40.2)	2	(-71.4)	5	(-96.4)
挪威 Norway	30	(+50.0)	544	(+70.9)	3	(-25.0)	35	(-12.1)
巴拿馬 Panama	1 409	(+9.1)	20 764	(+16.3)	402	(+19.6)	6 077	(+52.4)
菲律賓 Philippines	23	(+4.5)	313	(+26.4)	4	(+33.3)	53	(+1.5)
新加坡 Singapore	369	(+4.2)	5 193	(+9.3)	101	(+23.2)	1 150	(+25.1)
聖文森特和 格林納丁斯 St. Vincent and the Grenadines	47	(-16.1)	366	(-13.4)	15	(-16.7)	80	(-50.3)
台灣 Taiwan	203	(+75.0)	137	(-21.1)	6	(-)	57	(-)
泰國 Thailand	33	(-5.7)	123	(-18.2)	8	(+166.7)	24	(+182.8)
英國 United Kingdom	161	(+4.5)	4 271	(+14.8)	36	(+28.6)	1 000	(+60.2)
馬紹爾群島 Marshall Islands	176	(+21.4)	2 380	(+8.7)	37	(0)	410	(-4.7)
越南 Vietnam	51	(+24.4)	317	(+57.5)	8	(+166.7)	29	(+113.9)
其他 ⁽¹⁾ Others ⁽¹⁾	196	(+0.5)	2 308	(+2.3)	50	(-10.7)	362	(-33.5)
總計 Total	5 371	(+7.0)	81 214	(+13.4)	3 036	(+0.7)	20 316	(+18.7)

備註： 此表內的遠洋輪船及內河船隻數目不能直接地加在一起，因為同一艘船舶在一年內可能會被歸納於遠洋及內河船舶類別，視乎該船舶在該年度不同的抵港旅程是否超越內河航限而定。

Remark: The number of ocean vessels and river vessels in this table cannot be grouped together by simple addition as the same vessel may be classified as ocean and river vessel during a year depending whether her trips to Hong Kong in that year were beyond the river trade limit or not.

註釋： (1) 包括所有在二零零九年抵港船舶總數少於二十船舶的旗號。

Note: (1) Including those flags of which their total number of vessels calling Hong Kong were less than 20 in 2009.

表 6
TABLE 6

2009 年按船舶類型分析離港船舶的平均在港停留時間
Average Time in Port for Vessels Departing Hong Kong by Ship Type, 2009

小時
Hours

船舶類型 Ship Type	遠洋輪船 Ocean Vessels	內河船隻 River Vessels	總計 Total
運車船 Car Carrier	6	7	6
化學品運載船 Chemical Carrier/Tanker	18	49	29
普通貨船 Conventional Cargo Vessel	31	30	30
郵船/渡輪 Cruise/Ferry	12	N.A.	N.A.
散裝乾貨船 Dry Bulk Carrier	35	38	36
漁船/魚類加工船 Fishing/Fish Processing Vessel	78	-	-
全槽格式貨櫃船 Fully Cellular Container Vessel	22	33	30
液化氣體運載船 Gas Carrier/Tanker	55	28	53
躉船/駁船/貨艇 Lighter/Barge/Cargo Junk	209	76	77
礦沙散貨油類混用船 OBO (Ore, Bulk, Oil) Carrier	68	-	-
油輪 Oil Tanker	30	56	41
滾裝卸式船 Roll On/Roll Off	15	8	14
半貨櫃船 Semi-container Vessel	42	39	39
拖船 Tug	166	81	84
其他 Others	80	51	63
所有船舶類型 All Ship Type	27	39	35

表 7
TABLE 7

2009 年在貨櫃碼頭處理貨櫃的遠洋輪船統計資料
Statistics on Ocean Vessels with Containers Handled in Container Terminals, 2009

項目 Item	抵港船次 No. of Vessel Arrivals	比重百分率 Percentage Share
	(%)	
在貨櫃碼頭處理貨櫃的遠洋輪船 Ocean Vessels with Containers Handled in Container Terminals	12 111 (-10.0)	100.0%
- 按載重噸分析 - Analysed by Deadweight (DWT)		
少於 10 000 載重噸 Under 10 000 DWT	658 (-23.0)	5.4%
10 000 - 19 999 載重噸 10 000 - 19 999 DWT	1 886 (-19.9)	15.6%
20 000 - 29 999 載重噸 20 000 - 29 999 DWT	2 100 (-6.7)	17.3%
30 000 - 39 999 載重噸 30 000 - 39 999 DWT	1 229 (-27.9)	10.1%
40 000 - 49 999 載重噸 40 000 - 49 999 DWT	946 (-19.8)	7.8%
50 000 - 99 999 載重噸 50 000 - 99 999 DWT	4 207 (+0.3)	34.7%
100 000 載重噸及以上 100 000 DWT and above	1 085 (+17.9)	9.0%
- 按主要貿易地區/國家分析 (根據所申報的上一個停靠港口) - Analysed by Principal Trading Region/Country (Based on Reported Previous Port)		
東南亞 South East Asia	4 535 (+2.1)	37.4%
中國內地 Mainland China	2 725 (-30.2)	22.5%
台灣 Taiwan	2 724 (-0.8)	22.5%
北美洲 North America	589 (-23.4)	4.9%
日本 Japan	561 (-7.0)	4.6%
西歐 Western Europe	395 (+17.6)	3.3%
中美洲、南美洲 Central and South America	163 (-18.1)	1.3%
大洋洲 Oceania	149 (-4.5)	1.2%
中東 Middle East	66 (-1.5)	0.5%
獨立國家聯合體及東歐 CIS and Eastern Europe	52 (-28.8)	0.4%
非洲 Africa	30 (-69.4)	0.2%
其他 Others	122 (+82.1)	1.0%
使用貨櫃碼頭處理貨櫃的遠洋輪船平均在港停留時間 (小時) Average Time in Port for Ocean Vessels with Containers Handled in Container Terminals (Hours)	13.6	

表 8
TABLE 8

2009 年按夏季吃水分析抵港遠洋輪船的船次
Ocean Vessel Arrivals by Summer Draft, 2009

夏季吃水 (米) Summer Draft (m)	抵港船次 No. of Vessel Arrivals	比重百分率 Percentage Share
	(%)	
少於 2.00 Under 2.00	1 041 (-10.8)	3.1%
2.00 - 3.99	6 216 (+7.8)	18.7%
4.00 - 5.99	3 970 (-1.7)	12.0%
6.00 - 7.99	3 766 (-6.5)	11.4%
8.00 - 9.99	5 683 (-13.8)	17.1%
10.00 - 11.99	3 962 (-20.7)	11.9%
12.00 - 13.99	3 419 (-2.3)	10.3%
14.00 - 15.99	4 351 (-12.7)	13.1%
16.00 - 17.99	461 (-5.5)	1.4%
18.00 及以上 18.00 and above	288 (-2.4)	0.9%
總計 Total	33 157 (-7.5)	100.0%

表 9
TABLE 9

2009 年按船舶長度分析抵港遠洋輪船的船次
Ocean Vessel Arrivals by Vessel Length, 2009

船舶長度 (米) Length Overall (m)	抵港船次 No. of Vessel Arrivals	比重百分率 Percentage Share
	(%)	
少於 30.0 Under 30.0	506 (-33.5)	1.5%
30.0 - 49.9	3 112 (+30.9)	9.4%
50.0 - 99.9	7 257 (-9.8)	21.9%
100.0 - 149.9	5 921 (-9.1)	17.9%
150.0 - 199.9	6 521 (-21.6)	19.7%
200.0 - 249.9	3 568 (-0.3)	10.8%
250.0 - 299.9	4 245 (-3.7)	12.8%
300.0 及以上 - 300.0 and above	2 027 (+9.6)	6.1%
總計 Total	33 157 (-7.5)	100.0%

表 10
TABLE 10

2009 年按主要來港原因分析抵港遠洋輪船的船次
Ocean Vessel Arrivals by Main Reason of Call, 2009

主要來港原因 Main Reason of Call	抵港船次 No. of Vessel Arrivals		比重百分率 Percentage Share
		(%)	
裝貨、卸貨 Loading and Discharging Cargo	21 715	(-4.0)	65.5%
裝貨 Loading Cargo	2 534	(-15.3)	7.6%
交換文件 Switch Documents	2 455	(-22.6)	7.4%
旅遊 (郵輪) Tour (Cruise)	2 345	(-19.3)	7.1%
卸貨 Discharging Cargo	1 961	(-21.7)	5.9%
船上用品補給 (燃料除外) Taking Stores (Except Bunkers)	1 197	(+97.2)	3.6%
補充燃料 Bunkers	312	(-21.0)	0.9%
消遣/ 運動 (遊艇) Pleasure/ Sports (Pleasure Vessels)	131	(+27.2)	0.4%
船員變動 (貨船) Change of Crew (Cargo Vessels)	86	(+145.7)	0.3%
緊急修理、非例行入乾塢 Emergency Repair, Non-routine Dry Docking	48	(-7.7)	0.1%
例行入乾塢 Routine Dry Docking	21	(-19.2)	0.1%
其他 Others	352	(-18.3)	1.1%
總計 Total	33 157	(-7.5)	100.0%

表 11
TABLE 11

2009 年按停泊地點及有否指定行程分析郵輪抵港船次
Cruise Arrivals by Berthing Location by Whether the Trip with Itinerary, 2009

停泊地點 Berthing Location	郵輪抵港船次 ⁽¹⁾ Number of Cruise Arrivals ⁽¹⁾					
	有指定行程 With Itinerary		公海 ⁽²⁾ High Seas ⁽²⁾		總計 Total	
	數目 Number	變動百分率 Percentage Change	數目 Number	變動百分率 Percentage Change	數目 Number	變動百分率 Percentage Change
海運大廈 Ocean Terminal	62	-60.5%	484	-16.3%	546	-25.7%
中國客運碼頭 China Ferry Terminal	10	0%	613	+2.7%	623	+2.6%
浮泡和碇泊處 Buoys and Anchorages	8	+166.7%	1 151	-25.8%	1 159	-25.5%
其他 ⁽³⁾ Others ⁽³⁾	14	+75.0%	3	+50.0%	17	+70.0%
總計 Total	94	-47.2%	2 251	-17.5%	2 345	-19.3%

註釋： (1) 不包括非載客的船次，例如緊急修理、補充燃料等。
(2) 根據海商法，公海的定義是指不屬於任何國家領海或內水的海域。
(3) 包括私人泊位和倉庫碼頭、船塢及葵青貨櫃碼頭。

Notes: (1) Excluding those trips not for passenger carrying, e.g. emergency repair, bunkers, etc.
(2) According to Maritime Law, High Seas is defined to be the waters lying outside the territorial waters of any countries.
(3) Including private berths and wharves, docks, and container terminals at Kwai Chung and Tsing Yi.

表 12
TABLE 12

2009 年跨境客運碼頭⁽¹⁾的抵港及離港航次統計資料
Statistics on Vessel Arrivals and Departures at Cross-Boundary Ferry Terminals⁽¹⁾, 2009

來往 From/To	運輸工具類別 Type of Carrier	提供服務的船舶/ 直升機數目 No. of Vessels/ Helicopters in Services	抵港 Arrivals				離港 Departures			
			航次 No. of Trips		淨註冊噸位(千噸) NRT ('000)		航次 No. of Trips		淨註冊噸位(千噸) NRT ('000)	
		(%)	(%)	(%)	(%)	(%)	(%)	(%)	(%)	
澳門 Macau	雙體船 Catamaran	44 (+12.8)	41 353 (+27.1)	8 799 (+29.7)	41 461 (+25.2)	8 827 (+28.7)				
	噴射飛翼船 Jetfoil	11 (-21.4)	12 830 (-23.1)	1 253 (-23.6)	12 917 (-22.9)	1 262 (-23.4)				
	直升機 Helicopter	11 (+120.0)	7 745 (-10.5)	- (-)	7 745 (-10.5)	- (-)				
小計 - 澳門 Sub-total - Macau			61 928 (+7.0)	10 052 (+19.3)	62 123 (+6.1)	10 088 (+18.6)				
高明 Gaoming	雙體船 Catamaran	2 (-50.0)	375 (+2.5)	65 (+7.4)	376 (+3.6)	65 (+8.5)				
虎門 Humen	雙體船 Catamaran	4 (-42.9)	1 855 (-30.0)	290 (-30.7)	1 848 (-30.3)	289 (-31.0)				
江門 Jiangmen	雙體船 Catamaran	3 (-25.0)	753 (-22.0)	103 (-22.8)	746 (-22.6)	102 (-23.4)				
蓮花山 Lianhuashan	雙體船 Catamaran	5 (+150.0)	1 612 (+11.9)	275 (+11.2)	1 604 (+11.5)	273 (+10.8)				
南沙 Nansha	雙體船 Catamaran	5 (0)	2 026 (+8.3)	377 (-0.1)	2 023 (+10.8)	377 (+2.4)				
蛇口 Shekou	雙體船 Catamaran	14 (0)	7 609 (-12.8)	934 (-9.3)	7 599 (-13.0)	933 (-9.6)				
深圳 Shenzhen	雙體船 Catamaran	13 (-40.9)	2 398 (-29.5)	374 (-29.0)	2 283 (-25.9)	355 (-25.7)				
順德 Shunde	雙體船 Catamaran	6 (+50.0)	2 212 (+0.5)	373 (+0.8)	2 204 (+0.7)	371 (+1.1)				
中山 Zhongshan	雙體船 Catamaran	6 (+20.0)	3 219 (-13.3)	546 (-13.6)	3 410 (-8.1)	578 (-8.4)				
珠海 Zhuhai	雙體船 Catamaran	11 (+22.2)	6 356 (+0.2)	1 083 (+0.7)	6 354 (+0.3)	1 082 (+0.8)				
小計 - 內河港口 Sub-total - River Trade Ports			28 415 (-10.3)	4 418 (-9.3)	28 447 (-9.1)	4 426 (-8.0)				
廈門 Xiamen	大船 Conventional Ferry	1 (0)	9 (0)	32 (0)	9 (-10.0)	32 (-10.0)				
公海 High Seas	大船 Conventional Ferry	1 (0)	611 (+2.3)	2 187 (+2.3)	611 (+2.3)	2 187 (+2.3)				
小計 - 大船 Sub-total - Conventional Ferry			620 (+2.3)	2 220 (+2.3)	620 (+2.1)	2 220 (+2.1)				
總計 Total			90 963 (+0.9)	16 690 (+7.9)	91 190 (+0.8)	16 733 (+8.1)				

註釋： (1) 包括港澳客運碼頭、中國客運碼頭、屯門客運碼頭及海天客運碼頭的統計。

Note: (1) Including Macau Ferry Terminal, China Ferry Terminal, Tuen Mun Ferry Terminal and SkyPier.

表 13
TABLE 13

2009 年按船舶類型分析香港過境船舶的船次
Number of Vessel Trips Transit Hong Kong by Ship Type, 2009

船舶類型 Ship Type	過境船次 Vessel Trips Transit Hong Kong	變動百分率 Percentage Change	淨註冊噸位 (千噸) NRT ('000)	變動百分率 Percentage Change
全槽格式貨櫃船 Fully Cellular Container Vessel	10 608	-9.4%	298 716	-3.0%
拖船 Tug	851	-12.9%	482	-11.0%
散裝乾貨船 Dry Bulk Carrier	500	+4.0%	11 451	+13.1%
普通貨船 Conventional Cargo Vessel	458	+7.3%	2 050	+6.8%
油輪 Oil Tanker	179	+12.6%	1 844	+27.1%
液化氣體運載船 Gas Carrier/Tanker	130	+20.4%	3 776	+26.5%
化學品運載船 Chemical Carrier/Tanker	140	+41.1%	475	+94.8%
滾裝卸式船 Roll On/Roll Off	5	0%	18	+1.5%
半貨櫃船 Semi-container Vessel	9	+12.5%	46	-25.9%
其他 Others	708	+26.2%	604	+40.5%
總計 Total	13 588	-6.5%	319 463	-2.0%

資料來源： 海事處船隻航行監察中心
Data Source: Vessel Traffic Centre, Marine Department

表 14
TABLE 14

2009 年按跨境客運碼頭分析客運量
Passenger Throughput by Cross-Boundary Ferry Terminals, 2009

千位 ('000)

來往 From/To	澳門 Macau		中國內地 Mainland China		公海 High Seas		總計 Total	
		(%)		(%)		(%)		(%)
港澳客運碼頭 ⁽¹⁾ Macau Ferry Terminal ⁽¹⁾	14 373 ⁽²⁾	(-2.2)	1 145	(-20.1)	-	(-)	15 518	(-3.8)
中國客運碼頭 ⁽¹⁾ China Ferry Terminal ⁽¹⁾	3 148	(-18.9)	3 220	(-16.9)	273	(-12.8)	6 641	(-17.7)
屯門客運碼頭 ⁽¹⁾ Tuen Mun Ferry Terminal ⁽¹⁾	-	(-)	1	(-9.8)	-	(-)	1	(-9.8)
海天客運碼頭 SkyPier	631	(+4.1)	1 178	(-20.1)	-	(-)	1 809	(-13.1)
總計 Total	18 152	(-5.3)	5 544	(-18.3)	273	(-12.8)	23 970	(-8.8)

註釋： (1) 這數字與入境事務處發布的統計數字並不相等，原因在於入境事務處的數字包括毋須付船費的乘客 [例如不足一歲者]。

(2) 乘搭直升機經港澳碼頭來往澳門乘客沒有計算在內 (2009 年共 86 153 人次)。

Notes: (1) The figures do not tally with those released by the Immigration Department because the figures of Immigration Department cover the passengers who are not required to pay fares (e.g. passengers less than 1 year of age).

(2) The helicopter passengers to and from Macau via Macau Ferry Terminal are excluded (86 153 in 2009).

資料來源： 香港國際機場客運碼頭服務有限公司及海事處客運碼頭組

Data Source: Hong Kong International Airport Ferry Terminal Services Ltd and Ferry Terminals Section, Marine Department

表 15
TABLE 15

2009 年按航線分析抵港及離港乘客人次
Passenger Arrivals and Departures by Routes, 2009

I. 海事處轄下客運碼頭⁽¹⁾
Marine Ferry Terminals⁽¹⁾

來往 From/To	運輸工具類別 Type of Carrier	抵港乘客 Passenger Arrivals		離港乘客 Passenger Departures	
		乘客人次(千位數) Passengers ('000)	載客率 Passenger Load Factor	乘客人次(千位數) Passengers ('000)	載客率 Passenger Load Factor
		(%)	(%)	(%)	(%)
澳門 Macau	雙體船 Catamaran	6 273 (+11.1)	41.9% (-14.1)	7 434 (+7.4)	48.7% (-17.2)
	噴射飛翼船 Jetfoil	1 911 (-35.5)	62.1% (-15.6)	1 903 (-37.4)	61.4% (-18.4)
	直升機 Helicopter	41 (-14.9)	44.2% (-4.9)	45 (-22.0)	48.4% (-12.9)
小計 - 澳門 Sub-total - Macau		8 225 (-5.0)	45.3% (-17.7)	9 382 (-6.4)	50.9% (-19.3)
高明 Gaoming	雙體船 Catamaran	56 (-2.0)	44.3% (-4.1)	60 (-0.3)	47.6% (-3.7)
虎門 Humen	雙體船 Catamaran	0 (-100.0)	0% (-100.0)	0 (-100.0)	0% (-100.0)
江門 Jiangmen	雙體船 Catamaran	78 (-32.1)	29.3% (-12.4)	86 (-29.5)	32.5% (-8.1)
蓮花山 Lianhuashan	雙體船 Catamaran	203 (-0.2)	35.0% (-10.2)	179 (+2.7)	31.1% (-7.1)
南沙 Nansha	雙體船 Catamaran	178 (-25.7)	26.1% (-23.7)	176 (-22.4)	25.3% (-19.9)
蛇口 Shekou	雙體船 Catamaran	103 (-42.7)	13.2% (-25.3)	128 (-31.9)	16.4% (-11.3)
深圳 Shenzhen	雙體船 Catamaran	3 (-94.4)	11.5% (-38.2)	5 (-91.3)	22.2% (+11.8)
順德 Shunde	雙體船 Catamaran	314 (-18.1)	41.6% (-17.7)	323 (-13.8)	43.0% (-13.5)
中山 Zhongshan	雙體船 Catamaran	448 (-18.1)	44.1% (+0.2)	470 (-9.7)	44.0% (+4.8)
珠海 Zhuhai	雙體船 Catamaran	767 (-17.4)	42.5% (-11.9)	786 (-6.5)	44.1% (+0.1)
小計 - 內河港口 Sub-total - River Trade Ports		2 151 (-20.9)	35.6% (-9.2)	2 214 (-14.5)	36.4% (-2.0)
廈門 Xiamen	大船 Conventional Ferry	1 (-0.4)	10.5% (-0.4)	1 (-5.6)	10.5% (+4.9)
公海 High Seas	大船 Conventional Ferry	137 (-12.8)	40.3% (-14.8)	137 (-12.8)	40.3% (-14.8)
小計 - 大船 Sub-total - Conventional Ferry		137 (-12.8)	39.9% (-14.8)	137 (-12.7)	39.9% (-14.6)
海事處轄下客運碼頭 Marine Ferry Terminals		10 514 (-8.9)	42.9% (-14.6)	11 733 (-8.1)	47.2% (-14.2)

註釋： (1) 包括港澳客運碼頭、中國客運碼頭和屯門客運碼頭。

Note: (1) Including Macau Ferry Terminal, China Ferry Terminal and Tuen Mun Ferry Terminal.

表 15 - 續
TABLE 15 - Cont'd

II. 海天客運碼頭
SkyPier

來往 From/To	運輸工具類別 Type of Carrier	抵港乘客 Passenger Arrivals				離港乘客 Passenger Departures			
		乘客人次(千位數) Passengers ('000)		載客率 Passenger Load Factor		乘客人次(千位數) Passengers ('000)		載客率 Passenger Load Factor	
			(%)		(%)		(%)		(%)
澳門 Macau	雙體船 Catamaran	448	(+10.9)	41.9%	(-13.9)	183	(-9.6)	21.7%	(-12.8)
小計 - 澳門 Sub-total - Macau		448	(+10.9)	41.9%	(-13.9)	183	(-9.6)	21.7%	(-12.8)
虎門 Humen	雙體船 Catamaran	217	(-8.8)	37.9%	(+28.5)	114	(-37.1)	19.9%	(-11.0)
南沙 Nansha	雙體船 Catamaran	5	(-)	7.0%	(-)	2	(-)	2.4%	(-)
蛇口 Shekou	雙體船 Catamaran	359	(+0.8)	29.4%	(+0.3)	131	(-13.7)	10.8%	(-13.9)
深圳 Shenzhen	雙體船 Catamaran	135	(-39.1)	17.9%	(-30.6)	103	(-46.1)	14.3%	(-47.4)
中山 Zhongshan	雙體船 Catamaran	24	(-0.5)	18.4%	(-1.1)	15	(-73.0)	11.1%	(-63.6)
珠海 Zhuhai	雙體船 Catamaran	44	(+41.7)	11.9%	(+4.1)	29	(+14.3)	7.5%	(-13.2)
小計 - 內河港口 Sub-total - River Trade Ports		785	(-10.0)	25.1%	(-5.3)	393	(-34.8)	12.7%	(-32.7)
海天客運碼頭 SkyPier		1 233	(-3.3)	29.4%	(-5.1)	576	(-28.5)	14.6%	(-27.2)

表16
TABLE 16

2009年按主要貨物裝卸地點分析貨櫃吞吐量
Container Throughput by Main Cargo Handling Location, 2009

千個標準貨櫃單位
'000 TEUs

類別 Category	貨櫃碼頭 Container Terminals						貨櫃碼頭以外 Other than Container Terminals						總計 Total	
	遠洋 Ocean		內河 River		小計 Sub-total		遠洋 Ocean		內河 River		小計 Sub-total			
裝上 Loaded	%		%		%		%		%		%		%	
載貨貨櫃 Laden Container	6 037	(-19.6)	932	(+10.3)	6 968	(-16.6)	411	(-23.9)	1 647	(+7.2)	2 058	(-0.9)	9 026	(-13.5)
空貨櫃 Empty Container	434	(+31.9)	224	(-18.8)	658	(+8.8)	22	(-41.7)	824	(-19.1)	846	(-19.9)	1 504	(-9.5)
小計 Sub-total	6 470	(-17.5)	1 156	(+3.1)	7 626	(-14.9)	433	(-25.0)	2 470	(-3.3)	2 904	(-7.3)	10 529	(-12.9)
卸下 Discharged														
載貨貨櫃 Laden Container	5 587	(-5.2)	997	(-18.8)	6 584	(-7.5)	636	(-42.7)	1 480	(-8.3)	2 116	(-22.3)	8 700	(-11.6)
空貨櫃 Empty Container	900	(-43.1)	50	(-24.1)	949	(-42.4)	59	(-22.6)	802	(-4.3)	861	(-5.8)	1 811	(-29.3)
小計 Sub-total	6 487	(-13.2)	1 046	(-19.0)	7 533	(-14.1)	695	(-41.4)	2 283	(-6.9)	2 977	(-18.1)	10 511	(-15.2)
合計 Overall														
載貨貨櫃 Laden Container	11 624	(-13.3)	1 928	(-6.9)	13 552	(-12.4)	1 047	(-36.5)	3 127	(-0.7)	4 174	(-13.0)	17 726	(-12.6)
空貨櫃 Empty Container	1 333	(-30.2)	274	(-19.8)	1 607	(-28.6)	81	(-28.9)	1 626	(-12.4)	1 707	(-13.4)	3 314	(-21.5)
總計 Total	12 957	(-15.4)	2 202	(-8.7)	15 159	(-14.5)	1 128	(-36.0)	4 753	(-5.1)	5 881	(-13.1)	21 040	(-14.1)

表 17
TABLE 17

2009 年按貨櫃碼頭以外的主要貨物裝卸地點分析裝卸的貨櫃
Containers Discharged/Loaded at Main Cargo Handling Locations Other than Container Terminals, 2009

千個標準貨櫃單位
'000 TEUs

主要貨物裝卸地點 (貨櫃碼頭以外) Main Cargo Handling Location (Other than Container Terminals)	遠洋 Ocean				內河 River				總計 Total	
	卸下 Discharged		裝上 Loaded		卸下 Discharged		裝上 Loaded			
	載貨貨櫃 Laden	空貨櫃 Empty	載貨貨櫃 Laden	空貨櫃 Empty	載貨貨櫃 Laden	空貨櫃 Empty	載貨貨櫃 Laden	空貨櫃 Empty	載貨貨櫃 Laden	空貨櫃 Empty
泊位和倉庫碼頭 Berths and Wharves	(%) 41 (-75.7)	(%) 4 (-81.4)	(%) 85 (-1.8)	(%) 11 (-52.6)	(%) 1 096 (+0.3)	(%) 781 (-1.4)	(%) 1 449 (+9.1)	(%) 638 (-11.5)	(%) 2 671 (-0.2)	(%) 1 434 (-8.0)
碇泊處 Anchorages	588 (-35.0)	55 (+3.1)	324 (-26.8)	11 (-22.9)	385 (-26.2)	22 (-53.4)	198 (-5.2)	186 (-37.5)	1 495 (-28.1)	273 (-33.5)
浮泡 Buoys	6 (-81.2)	0 (-100.0)	2 (-82.7)	0 (-)	0(-100.0)	0 (-)	0 (-)	0 (-)	8 (-81.7)	0 (-100.0)
總計 Total	636 (-42.7)	59 (-22.6)	411 (-23.9)	22 (-41.7)	1 480 (-8.3)	802 (-4.3)	1 647 (+7.2)	824 (-19.1)	4 174 (-13.0)	1 707 (-13.4)

表 18
TABLE 18

2009 年按貨物種類及運輸方式劃分的裝卸港口貨物
Port Cargo Discharged/Loaded by Cargo Type and Mode of Transport, 2009

千公噸
'000 Tonnes

貨物種類 Cargo Type	海運 Seaborne		河運 River		水運總計 Waterborne total	
	卸下 Discharged	裝上 Loaded	卸下 Discharged	裝上 Loaded	卸下 Discharged	裝上 Loaded
	(%)	(%)	(%)	(%)	(%)	(%)
包裝散貨 Break bulk cargo	5 350 (+5.1)	853 (-31.8)	2 069 (-21.4)	4 802 (-50.4)	7 419 (-3.9)	5 655 (-48.3)
貨櫃貨物 Containerized cargo	69 823 (-10.1)	54 501 (-19.3)	22 188 (-11.3)	30 967 (+13.1)	92 010 (-10.4)	85 468 (-9.9)
無包裝液態散貨 Unpacked liquid bulk cargo	16 667 (+18.3)	270 (-13.5)	2 149 (+37.8)	486 (+5.0)	18 816 (+20.3)	756 (-2.5)
無包裝固態散貨 Unpacked solid bulk cargo	13 773 (+2.7)	355 (-46.0)	7 276 (+11.3)	11 439 (+86.1)	21 049 (+5.5)	11 794 (+73.3)
總計 Total	105 612 (-4.2)	55 979 (-19.7)	33 681 (-5.8)	47 694 (+9.2)	139 293 (-4.6)	103 673 (-8.6)

資料來源： 政府統計處船隻及貨運統計組
Data Source: Shipping and Cargo Statistics Section, Census and Statistics Department

表 19
TABLE 19

海港繫泊浮泡統計資料
Harbour Mooring Buoys Statistics

A. 浮泡數目 (年底數字) Number of Buoys (Figures as at End of the Year)	2008	2009
"A 級" 繫泊浮泡數目 No. of "A class" mooring buoys	19	13 ⁽¹⁾
"B 級" 繫泊浮泡數目 No. of "B class" mooring buoys	10	4 ⁽¹⁾

B. 使用情況 Usage	2008	2009
"A 級" 浮泡訂用日數 Days booked for "A class" buoys	1 826	1 140
"B 級" 浮泡訂用日數 Days booked for "B class" buoys	725	576
"A 級" 浮泡訂用百分率 Percentage of "A class" buoys used based on booking	34.8%	16.8%
"B 級" 浮泡訂用百分率 Percentage of "B class" buoys used based on booking	26.8%	16.1%
上述數字只顯示訂用情況，實際使用率則如下： Whilst the above figures are indicative of booking usage, the actual physical occupancy rates are as follows:		
"A 級" 浮泡 "A class" buoys	24.4%	11.2%
"B 級" 浮泡 "B class" buoys	17.4%	10.3%

C. 浮泡保養 Buoys Maintenance	2008	2009
按期保養的燈浮標 Light Buoys maintained	114	114
按期保養的養魚區浮泡 Mariculture Buoys maintained	178	178
按期保養的小型繫泊浮泡 Minor Mooring maintained	169	172
按期保養的大型繫泊浮泡 Major Mooring maintained	20	23
按期保養的"A 級" 海港繫泊浮泡 Maintained the "A Class" Harbour mooring	19	13
按期保養的"B 級" 海港繫泊浮泡 Maintained the "B Class" Harbour mooring	10	4

註釋： (1) 已於二零零九年底展開浮泡移除工程，將"A 級"和"B 級"浮泡分別減至 13 個及 4 個。

Note: (1) Buoy removal work started in end 2009 to reduce the number of Class "A" and "B" buoys to 13 and 4 respectively.

資料來源： (A) & (B) 海事處船隻航行監察中心
(C) 海事處港口後勤組

Data Sources: (A) & (B) Vessel Traffic Centre, Marine Department
(C) Port Logistics Section, Marine Department

表 20
TABLE 20

2009 年按分佈地點分析香港私用繫泡數目
Number of Private Moorings Laid in Hong Kong by Location, 2009

分佈地點	Location	私用繫泡數目 Number of Private Mooring
銅鑼灣避風塘、香港仔西避風塘及香港仔南避風塘 Causeway Bay Typhoon Shelter, Aberdeen West Typhoon Shelter and Aberdeen South Typhoon Shelter		
香港仔南避風塘 (布廠灣)	Aberdeen South Typhoon Shelter (Po Chong Wan)	347
香港仔南避風塘 (白沙灣)	Aberdeen South Typhoon Shelter (Pak Sha Wan)	1
香港仔西避風塘	Aberdeen West Typhoon Shelter	1
銅鑼灣避風塘	Causeway Bay Typhoon Shelter	296
小計	Sub-total	645
在所有其他避風塘及維多利亞港口界限以內的其他地方 Other Typhoon Shelters and Elsewhere within the limits of Victoria Port		
長洲避風塘	Cheung Chau Typhoon Shelter	11
荔枝角	Lai Chi Kok	3
新油麻地避風塘	New Yau Ma Tei Typhoon Shelter	18
新油麻地避風塘 (海堤對開海面)	New Yau Ma Tei Typhoon Shelter (Outside Breakwater)	33
油麻地碇泊處以北海面	North of Yau Ma Tei Anchorage	1
藍巴勒海峽避風塘 (海堤對開海面)	Rambler Channel Typhoon Shelter (Outside Breakwater)	6
三家村避風塘	Sam Ka Tsuen Typhoon Shelter	1
汀九	Ting Kau	62
土瓜灣	To Kwa Wan	4
青衣以北海面	Tsing Yi North	4
荃灣	Tsuen Wan	93
屯門避風塘	Tuen Mun Typhoon Shelter	7
油塘灣	Yau Tong Wan	2
小計	Sub-total	245

表 20 – 續
TABLE 20 – Cont'd

分佈地點	Location	私用繫泡數目 Number of Private Mooring
在香港水域內的其他地方 Elsewhere in the Waters of Hong Kong		
香港仔西避風塘 (海堤對開海面)	Aberdeen West Typhoon Shelter (Outside Breakwater)	16
大嶼山長沙欄	Cheung Sha Lan, Lantau Island	30
大嶼山愉景灣	Discovery Bay, Lantau Island	6
南丫島下尾灣 (電力站對開海面)	Ha Mei Wan, Lamma Island (Off Power Station)	6
西貢白沙灣	Hebe Haven, Sai Kung	680
將軍澳	Junk Bay	1
西貢滘西洲	Kau Sai Chau, Sai Kung	1
大灘海峽高塘口灣	Ko Tong Hau, Long Harbour	1
南丫島鹿洲灣	Luk Chau Wan, Lamma Island	1
熨波洲	Middle Island	89
大嶼山稔樹灣	Nim Shue Wan, Lantau Island	15
北大嶼山	North Lantau	1
赤柱正灘	Stanley Main Beach	4
大埔大美督	Tai Mei Tuk, Tai Po	35
大欖	Tai Lam	3
西貢大網仔	Tai Mong Tsai, Sai Kung	7
西貢大網仔 (阿公灣)	Tai Mong Tsai, Sai Kung (A Kung Wan)	3
大潭港	Tai Tam Harbour	32
西貢斬竹灣	Tsam Chuk Wan, Sai Kung	10
青衣以西海面	Tsing Yi West	3
西貢早禾坑	Tso Wo Hang, Sai Kung	18
屯門避風塘 (海堤對開海面)	Tuen Mun Typhoon Shelter (Outside Breakwater)	6
黃竹角海往灣	Hoi Wong Wan, Wong Chuk Kok	2
南丫島榕樹灣	Yung Shue Wan, Lamma Island	2
小計	Sub-total	972
總計	Total	1 862

資料來源： 海事處私用繫泡分組
Data Source: Private Mooring Sub-unit, Marine Department

表 21
TABLE 21
碇泊處一覽
List of Anchorages

碇泊處 Anchorages	面積 (公頃) Area (Hectares)
A. 檢疫及入境船隻碇泊處 Quarantine and Immigration Anchorages	
1. 西面檢疫及入境船隻碇泊處 Western Quarantine and Immigration Anchorage	121.1
2. 東面檢疫及入境船隻碇泊處 Eastern Quarantine and Immigration Anchorage	35.1
3. 屯門入境船隻碇泊處 Tuen Mun Immigration Anchorages	89.9
小計 Sub-total	246.1
B. 危險品碇泊處 Dangerous Goods Anchorages	
1. 交椅洲危險品碇泊處 Kau Yi Chau Dangerous Goods Anchorage	288.2
2. 荃灣危險品碇泊處 Tsuen Wan Dangerous Goods Anchorage	61.9
3. 西面危險品碇泊處 Western Dangerous Goods Anchorage	220.8
4. 糧船灣海危險品碇泊處 Rocky Harbour Dangerous Goods Anchorage	26.9
5. 將軍澳危險品碇泊處 Junk Bay Dangerous Goods Anchorage	28.9
6. 大鵬灣危險品碇泊處 Mirs Bay Dangerous Goods Anchorage	316.5
7. 南丫島南危險品碇泊處 South Lamma Dangerous Goods Anchorage	228.5
8. 危險品留用碇泊處 Reserved Dangerous Goods Anchorage	37.3
小計 Sub-total	1 209.0
C. 維修碇泊處 Servicing Anchorages	
1. 馬灣碇泊處 Ma Wan Anchorage	138.4
2. 半山石碇泊處 Pun Shan Shek Anchorage	352.1
3. 西面 1 號碇泊處 Western Anchorage No.1	310.6
4. 西面 2 號碇泊處 Western Anchorage No.2	278.7
5. 西面 3 號碇泊處 Western Anchorage No.3	272.4
6. 南丫島北碇泊處 North Lamma Anchorage	375.1
7. 南丫島西北碇泊處 North West Lamma Anchorage	553.9
8. 油麻地碇泊處 Yau Ma Tei Anchorage	105.0
9. 奇力 1 號碇泊處 Kellett Anchorage No.1	74.7
10. 奇力 2 號碇泊處 Kellett Anchorage No.2	230.4
11. 奇力 3 號碇泊處 Kellett Anchorage No.3	102.8
12. 深水角 1 號碇泊處 Sham Shui Kok Anchorage No.1	72.6
13. 深水角 2 號碇泊處 Sham Shui Kok Anchorage No.2	35.6
小計 Sub-total	2 902.3

表 21 – 續
TABLE 21 – Cont'd

碇泊處 Anchorage	面積 (公頃) Area (Hectares)
D. 領航特別碇泊處 Pilotage Special Anchorages	
1. 龍鼓水道碇泊處	Urmston Road Anchorage
2. 南丫島東南碇泊處	South East Lamma Anchorage
3. 南丫島西南碇泊處	South West Lamma Anchorage
小計 Sub-total	703.9
E. 遮蔽碇泊處 Sheltered Anchorages	
1. 柴灣貨物裝卸灣	Chai Wan Cargo Basin
2. 吉澳	Kat O
3. 沙頭角	Sha Tau Kok
4. 大澳	Tai O
5. 荃灣	Tsuen Wan
6. 熨波洲	Middle Island
7. 白沙灣	Pak Sha Wan (Hebe Haven)
8. 西貢	Sai Kung
9. 大潭港	Tai Tam Harbour
10. 斬竹灣	Tsam Chuk Wan (Jade Bay)
11. 聖士提反灣	St. Stephen's Bay
12. 大美督	Tai Mei Tuk
13. 汀九	Ting Kau
小計 Sub-total	143.8
總計 Total	5 205.1

資料來源： 海事處策劃、發展協調及港口保安部

Data Source: Planning, Development & Port Security Branch, Marine Department

表 22
TABLE 22

避風塘一覽
List of Typhoon Shelters

	避風塘	Typhoon Shelters	面積 (公頃) Area (Hectares)
1.	南香港仔避風塘 ⁽¹⁾	Aberdeen South Typhoon Shelter ⁽¹⁾	26.1
2.	西香港仔避風塘	Aberdeen West Typhoon Shelter	34.2
3.	銅鑼灣避風塘 ⁽²⁾	Causeway Bay Typhoon Shelter ⁽²⁾	14.2
4.	長洲避風塘	Cheung Chau Typhoon Shelter	50.0
5.	觀塘避風塘	Kwun Tong Typhoon Shelter	33.8
6.	藍巴勒海峽避風塘	Rambler Channel Typhoon Shelter	12.9
7.	三家村避風塘	Sam Ka Tsuen Typhoon Shelter	1.9
8.	筲箕灣避風塘	Shau Kei Wan Typhoon Shelter	17.2
9.	船灣避風塘	Shuen Wan Typhoon Shelter	10.3
10.	土瓜灣避風塘	To Kwa Wan Typhoon Shelter	14.8
11.	屯門避風塘	Tuen Mun Typhoon Shelter	56.8
12.	新油麻地避風塘	New Yau Ma Tei Typhoon Shelter	64.6
13.	鹽田仔避風塘	Yim Tim Tsai Typhoon Shelter	9.2
14.	喜靈洲避風塘	Hei Ling Chau Typhoon Shelter	76.6
	總計	Total	422.6

備註： 只包括於二零零七年一月二日在政府憲報中(編號: L.N. 285/2006)所公佈的避風塘。

Remark: Including only those typhoon shelters promulgated in the Government Gazette (L.N. 285 of 2006) on 2.1.2007.

註釋： (1) 主要由遊樂船隻使用。

(2) 包括 9.9 公頃面積給遊樂船隻使用。

Notes: (1) Mainly for use by pleasure vessels.

(2) Including 9.9 hectares of area used by pleasure vessels.

資料來源： 海事處策劃、發展協調及港口保安部

Data Source: Planning, Development & Port Security Branch, Marine Department

表 23
TABLE 23

公眾貨物裝卸區一覽
List of Public Cargo Working Areas

	公眾貨物裝卸區 Public Cargo Working Area	面積 (公頃) Area (Hectares)	符合發牌條件之 停泊位長度 (米) Licensable Seafrontage (in Metres)
1.	茶果嶺公眾貨物裝卸區 Cha Kwo Ling Public Cargo Working Area	3.9	920
2.	柴灣公眾貨物裝卸區 Chai Wan Public Cargo Working Area	2.1	600
3.	觀塘公眾貨物裝卸區 Kwun Tong Public Cargo Working Area	2.3	692
4.	新油麻地公眾貨物裝卸區 New Yau Ma Tei Public Cargo Working Area	6.8	1 212
5.	藍巴勒海峽公眾貨物裝卸區 Rambler Channel Public Cargo Working Area	4.1	1 036
6.	昂船洲公眾貨物裝卸區 Stonecutters Island Public Cargo Working Area	3.6	672
7.	屯門公眾貨物裝卸區 Tuen Mun Public Cargo Working Area	3.3	660
8.	西區公眾貨物裝卸區 Western District Public Cargo Working Area	3.4	880
	總計 Total	29.5	6 672

資料來源： 海事處貨物裝卸組
Data Source: Cargo Handling Section, Marine Department

表 24
TABLE 24

垃圾收集、油污和檢控個案統計資料
Refuse Collection, Oil Pollution and Prosecution Statistics

A. 垃圾收集和油污事故
Refuse Collection and Oil Pollution Incident

		2007	2008	2009
1.	從海港收集的垃圾(公噸) Refuse collected from harbour (tonnes)	12 209	12 913	11 726
2.	從船舶收集的垃圾(公噸) Refuse collected from vessel (tonnes)	4 341	4 261	4 469
3.	接報的疑似油污事故(宗) Alleged Oil Pollution incidents, reported (cases)	149	114	145

B. 檢控統計數字
Prosecution Statistics

罪行 Offence	陳詞/聆訊個案 No. of Cases Heard		定罪個案 No. of Cases Convicted		罰款 Fine (HK\$)	
	2008	2009	2008	2009	2008	2009
1. 違反碰撞規例 Breach of Collision Regulations	55	62	53	53	61 450	89 350
2. 船上沒有合格船長/輪機員 No qualified master/engineer on board	268	353	265	349	147 600	214 150
3. 違反牌照/准許證條件 Breach of license/permit conditions	82	47	81	47	57 300	28 550
4. 未經允許進入機場入口區域 Entered into airport approach area without permission	8	9	8	9	6 100	8 800
5. 靠泊於已展示禁止船隻靠泊告示的岸壁/登岸梯級 Lying alongside seawall/landing steps prohibited by Notice	30	8	29	7	21 100	5 400
6. 船隻未有領牌/並無有效牌照 Vessel was not licensed/did not have a valid license	101	111	100	109	125 100	113 100
7. 未獲允許運載乘客/超額運載乘客 Carrying passenger without permission/excessive passengers	61	46	61	44	39 100	22 050
8. 沒有陳示有效的驗船/保險證明書 Failing to display valid certificate of survey/insurance	19	27	18	27	10 100	14 050
9. 超速行駛 Steaming in excessive speed	54	33	54	33	39 400	24 700
10. 海上拋置廢物 Marine littering	1	2	1	2	700	1 700
11. 海上拋置廢物(定額罰款) ⁽¹⁾ Marine littering (Fixed Penalty Notice) ⁽¹⁾	45	70	40	68	66 900	103 750
12. 在公共渡輪上吸煙 ⁽²⁾ Smoking on board public ferry ⁽²⁾	0	0	0	0	0	0
13. 排放黑煙 Emission of black smoke	4	0	4	0	2 700	0
14. 其他海事罪行 Other marine offences	784	381	775	370	576 810	310 060
總計 Total	1 512	1 149	1 489	1 118	1 154 360	935 660

註釋： (1) 二個申請法庭命令個案，附加罰款\$3,000。
(2) 個案由各公共渡輪公司提出再轉交海事處跟進檢控工作。

Notes: (1) Two Court Orders applied and an additional penalty of HK\$3,000 imposed.
(2) Cases initiated by public ferry companies and referred to Marine Department for follow up prosecution actions.

資料來源： (A) 海事處港口後勤組
(B) 海事處檢控小組

Data Sources: (A) Port Logistics Section, Marine Department
(B) Prosecution Unit, Marine Department

表 25
TABLE 25

2009 年底按噸位等級分析香港持牌船舶
Hong Kong Licensed Vessels by Tonnage Classification, as at year end 2009

船舶類型 Vessel Type		60 淨噸及以下 60 Net Tons and Below	61 至 300 淨噸 61 - 300 Net Tons	300 淨噸以上 Over 300 Net Tons	總計 Total
第 I 類 Class I	(a) 渡輪船舶 Ferry Vessel	12	39	9	60
	(b) 水上食肆 Floating Restaurant	0	0	2	2
	(c) 小輪 Launch	179	49	0	228
	(d) 多用途船舶 Multi-Purposes Vessel	9	5	2	16
	(e) 原始船舶 Primitive Vessel	69	1	0	70
	(f) 固定船舶 Stationary Vessel	0	0	0	0
	小計 Sub-total	269	94	13	376
第 II 類 Class II	(a) 起重機躉船 Crane Barge	0	1	3	4
	(b) 危險品運輸船 Dangerous Goods Carrier	1	8	18	27
	(c) 挖泥船 Dredger	0	1	0	1
	(d) 乾貨貨船 Dry Cargo Vessel	53	69	10	132
	(e) 非自航駁船 Dumb Lighter	4	23	430	457
	(f) 食油運輸船 Edible Oil Carrier	0	0	19	19
	(g) 平面工作躉 Flat-Top Work Barge	16	20	25	61
	(h) 浮塢 Floating Dock	0	0	3	3
	(i) 水上工場 Floating Workshop	0	1	0	1
	(j) 開底躉船 Hopper Barge	0	0	18	18
	(k) 登岸平台 Landing Platform	37	0	0	37
	(l) 登岸浮躉 Landing Pontoon	3	22	14	39
	(m) 有毒液體物質運輸船 Noxious Liquid Substance Carrier	0	0	3	3
	(n) 石油運輸船 Oil Carrier	22	110	42	174
	(o) 領港船 Pilot Boat	18	0	0	18

表 25 – 續
TABLE 25 – Cont'd

船舶類型 Vessel Type		60 淨噸及以下 60 Net Tons and Below	61 至 300 淨噸 61 - 300 Net Tons	300 淨噸以上 Over 300 Net Tons	總計 Total
第 II 類 Class II	(p) 特別用途船舶 Special Purpose Vessel	1	1	0	2
	(q) 固定船舶 Stationary Vessel	112	26	6	144
	(r) 交通船 Transportation Boat	32	0	0	32
	(s) 交通舢舨 Transportation Sampan	84	0	0	84
	(t) 拖船 Tug	62	89	0	151
	(u) 供水船 Water Boat	13	8	0	21
	(v) 工作船 Work Boat	283	11	1	295
	小計 Sub-total	741	390	592	1 723
第 III 類 Class III	(a) 運魚船 Fish Carrier	2	1	0	3
	(b) 漁船舢舨 Fishing Sampan	865	0	0	865
	(c) 漁船 Fishing Vessel	664	1 458	0	2 122
	(d) 舷外機開敞式舢舨 Outboard Open Sampan	2 559	0	0	2 559
	小計 Sub-total	4 090	1 459	0	5 549
第 IV 類 Class IV	(a) 機械輔助帆船 Auxiliary Powered Yacht	N.A.	N.A.	N.A.	561
	(b) 遊樂船 Cruiser	N.A.	N.A.	N.A.	1 950
	(c) 開敞式遊樂船 Open Cruiser	N.A.	N.A.	N.A.	3 962
	小計 Sub-total	N.A.	N.A.	N.A.	6 473
	住家船舶 ⁽²⁾ Dwelling Vessel ⁽²⁾	N.A.	N.A.	N.A.	4
總計 Total		5 100	1 943	605	14 125⁽¹⁾

註釋： (1) 已包括 30 艘閑置船舶。
(2) 全部在銅鑼灣避風塘。

資料來源： 海事處牌照及關務組
Data Source: Licensing and Port Formalities Section, Marine Department

Notes: (2) Including 30 laid-up vessels.
(2) All in Causeway Bay Typhoon Shelter.

表 26
TABLE 26

船舶安全監督統計資料
Ship Safety Statistics

A. 貨船安全統計數字 Cargo Ships Safety Statistics	2008	2009
海事處註冊貨船數目 No. of Cargo Ships in the Hong Kong Register <ol style="list-style-type: none"> 1. 所管理公約貨船數目 (截至年底) No. of convention cargo ships (as at year end) 2. 所管理公約貨船總噸位 (千公噸) (截至年底) Gross register tonnage of convention cargo ships ('000 tonnes) (as at year end) 3. 新申請在香港註冊公約貨船數目 No. of convention cargo ships newly registered 4. 新申請在香港註冊公約貨船總噸位 (千公噸) Gross register tonnage of convention cargo ships newly registered ('000 tonnes) 		
海事處註冊貨船品質審查/檢驗數目 No. of Hong Kong Registered Cargo Ships Quality Checked/Inspected <ol style="list-style-type: none"> 1. 品質審查的註冊貨船數目 Quality checks on Hong Kong registered cargo ships 2. 品質檢驗和稽核貨船數目 No. of flag state quality control ship inspections and company visits 3. 審核船體、機械和設備圖則數目 No. of plans examined in respect of hull, machinery and equipment 		
貨船設備安全證明書 Cargo Ship Safety Equipment Certificate <ol style="list-style-type: none"> 1. 所簽發的豁免證明書數目 No. of exemption certificates issued 2. 應其他國家機關要求而檢驗的外來船舶，以簽發設備安全證明書 Foreign ships surveyed at the request of other national authorities for the issue of SEC 		
貨船無線電安全證明書 Cargo Ship Safety Radio Certificate <ol style="list-style-type: none"> 1. 所簽發的豁免證明書數目 No. of exemption certificates issued 2. 應其他國家機關要求而檢驗的外來船舶，以簽發無線電安全證明書 Foreign ships surveyed at the request of other national authorities for the issue of SRC 		
其他 Others <ol style="list-style-type: none"> 1. 所簽發的《海員培訓、發證和值班標準國際公約》最低安全配員證明書 STCW Minimum Safe Manning Certificate issued 2. 對構造安全、設備安全、無線電安全證明書的監察，包括中期檢驗 Safety Construction, Equipment and Radio Certificates monitored including Intermediate Surveys 3. 對國際載重線證明書的監察，包括定期檢驗 International Load Line Certificate monitored including periodic surveys 4. 對國際防止油污證明書的監察 - 續期、年度/中期檢驗 International Oil Pollution Prevention Certificate monitored - renewal, annual/intermediate surveys 5. 對新船公司所作的國際安全管理稽核 ISM audits of new shipping companies 6. 其他檢驗 (例如合格證明書等) Other surveys (e.g. Certificates of Fitness etc) 		

表 26 – 續
TABLE 26 – Cont'd

B. 客船安全統計數字 Passenger Ships Safety Statistics	2008	2009
所管理公約客船 Convention Passenger Ships Administered		
1. 數目 Number	63	60
2. 總噸位 Gross register tonnage	41 191	66 099
客船安全證明書 Passenger and Safety Certificates		
1. 客船安全證明書 - 國際航線 PSSC - International Voyage	0	0
2. 客船安全證明書/高速船安全證明書 - 內河航限 PSSC/HSCSC - River Trade Limits	HSCSC – 81	HSCSC – 76
3. 延長客船安全證明書有效期 Extensions to Passenger and Safety Certificate	4	16
4. 客船安全證明書檢驗船舶總數 Total number of vessels surveyed for P&S Certificate	81	76
5. 受檢驗的客船無線電裝置 Passenger ship radio installations surveyed	81	76
6. 所簽發的載重線證書數目 No. of Load Line Certificate issued	27	20
7. 所簽發的載重線豁免證書數目 No. of Load Line Exemption Certificate issued	30	21
8. 所簽發的國際防止油污證書及增補數目 No. of IOPP Certificate with Supplement issued	31	18
9. 所簽發的國際防止油污豁免證書數目 No. of IOPP Exemption Certificate issued	9	5
10. 所簽發的最低安全配員證書數目 No. of Minimum Safe Manning Certificate issued	13	6
11. 對船公司所作的安全管理稽核 ISM audits of shipping companies	4	7
12. 對船舶所作的安全管理稽核 ISM audits of ships	47	23
13. 所簽發的 ISM 符合證明數目 No. of ISM Document of Compliance (DOC) issued	2	4
14. 所簽發的 ISM 安全管理證明書數目 No. of ISM Safety Management Certificate (SMC) issued	14	18
15. 所簽發的臨時 ISM 安全管理證明書數目 No. of Interim ISM Safety Management Certificate (SMC) issued	12	7

表 26 – 續
TABLE 26 – Cont'd

B. 客船安全統計數字 (續) Passenger Ships Safety Statistics (Cont'd)	2008	2009
雜項檢查，圖則審核和設備 Miscellaneous Inspection, Plans Approval and Equipment		
1. 審核客船船體、機械和設備圖則 Plans examined for hull, machinery and equipment of passenger ships	3 537	1 235
2. 簽發檢查證明書、雜項檢驗／檢查 Certificate of Inspection issued, miscellaneous surveys/inspections	110	120

C. 港口國監督統計數字 Port State Control Statistics	2008	2009
在香港特別行政區港口內進行的港口國監督檢查： Port State Control Inspections in the Harbour of Hong Kong Special Administrative Region:		
1. 在履行身為港口國監督委員而對《東京諒解備忘錄》應有的責任下，受港口國監督檢查的個別外來船舶數目 Number of individual foreign ships inspected under the obligation to Tokyo MOU, as a member Port State of the Committee	763	776
檢查遠洋船舶數目 Number of ocean vessels inspected	681	692
檢查沿岸船舶數目 Number of coastal vessels inspected	82	84
2. 對外來船舶進行港口國監督檢查 (包括複檢) 總數 Total number of Port State Control inspections carried out for foreign ships, including re-inspections	781	798
3. 被扣留在港的低於安全標準的船舶數目 Number of sub-standard ships detained in Hong Kong	42	41

資料來源： (A) 海事處船舶註冊及
商船海員管理處
海事處貨船安全組
(B) 海事處客船安全組
(C) 海事處港口國監督組

Data Sources: (A) Shipping Registry and
Mercantile Marine Office, Marine Department
Cargo Ships Safety Section, Marine Department
(B) Passenger Ships Safety Section, Marine Department
(C) Port State Control Section, Marine Department

表 27
TABLE 27

本地船隻安全統計資料
Local Vessels Safety Statistics

I. 船舶的檢驗和檢查統計 Statistics on Surveys and Inspections of Vessels	2008	2009
A. 簽發/批註證明書/適合聲明/紀錄等給本地船隻 Certificates/Declaration/Records etc. Issued/Endorsed to Local Vessels <ol style="list-style-type: none"> 1. 簽發/批註乾舷勘定證明書數目 No. of Freeboard Assignment Certificates Issued/Endorsed 2. 簽發安全設備檢驗紀錄數目 No. of Survey Record of Safety Equipment Issued 3. 簽發/批註載重線證明書數目 No. of Load Line Certificate Issued/Endorsed 4. 簽發噸位丈量記錄數目 No. of Record of Tonnage Measurement Issued 5. 簽發散裝有毒液體物質的防污證明書數目 No. of Pollution Prevention Certificates for the Carriage of Noxious Liquid Substances in Bulk Issued 6. 簽發適合運載危險品聲明數目 No. of Declaration of Fitness for the Carriage of Dangerous Goods Issued 7. 簽發香港防止油類污染證明書數目 No. of Hong Kong Oil Pollution Prevention Certificates Issued 8. 簽發驗船證明書數給本地船隻數目 No. of Certificate of Survey Issued for Local Vessels <p>第 I 類 Class I</p> <p>第 II 類 Class II</p> <p>第 III 類 Class III</p> <p>第 IV 類 Class IV</p>		
總計 Total	3 966	4 299
B. 審批圖則/文件 Plans/Documents Examined <ol style="list-style-type: none"> 1. 船隻傾斜測試及穩性確定數目 No. of Vessels Inclining Tested and Stability Information Assessed 2. 審核本地船隻的船體，機械和設備圖則數目 No. of Plans of Hull, Machinery and Equipment Examined for Local Vessels 		
總計 Total	5 353	5 161

表 27 – 續
TABLE 27 – Cont'd

I. 船舶的檢驗和檢查統計 (續) Statistics on Surveys and Inspections of Vessels (Cont'd)	2008	2009
C. 檢驗本地船隻隻數 (包括新船、現有船隻及抽查船隻等) Local Vessels Inspected (New, Existing and Spot-check Vessels etc.) <ol style="list-style-type: none"> 1. 執行其他政府部門要求檢查的船隻數目 No. of Inspections of Vessels for other Government Departments 2. 完成首次檢驗而新領牌的船隻數目 No. of Newly Licensed Vessels after completed Initial Survey 3. 在本港檢驗本地船隻的數目 No. of Local Vessels Inspected Locally 	<p style="text-align: center;">137</p> <p style="text-align: center;">23</p> <p style="text-align: center;">3 075</p>	<p style="text-align: center;">108</p> <p style="text-align: center;">43</p> <p style="text-align: center;">3 260</p>
總計 Total	<p style="text-align: center;">3 235</p>	<p style="text-align: center;">3 411</p>
D. 檢驗本地船隻次數 (包括新船、現有船隻及抽查船隻等) Inspection Visits Made to Local Vessels (New, Existing and Spot-check Vessels etc.) <ol style="list-style-type: none"> 1. 檢驗碰撞後破損的本地船隻數目 No. of Inspection surveys of Damaged Local Vessels after Collision 2. 抽查及複驗本地船隻數目 Number of Spot Checks and Audit Checks on Local Vessels 3. 海外檢驗本地船隻次數 No. of Overseas visits for Inspection of Local Vessels 4. 本地船隻在本港首次及定期檢查次數 No. of Initial and Periodical Inspection Visits Made Locally to Local Vessels 	<p style="text-align: center;">12</p> <p style="text-align: center;">108</p> <p style="text-align: center;">108</p> <p style="text-align: center;">4 151</p>	<p style="text-align: center;">13</p> <p style="text-align: center;">90</p> <p style="text-align: center;">134</p> <p style="text-align: center;">4 272</p>
總計 Total	<p style="text-align: center;">4 379</p>	<p style="text-align: center;">4 509</p>
E. 舉辦安全講座及研討會 Talks and Seminars Conducted	<p style="text-align: center;">38</p>	<p style="text-align: center;">30</p>

資料來源： 海事處本地船舶安全組

Data Source: Local Vessels Safety Section, Marine Department

表 27 – 續
TABLE 27 – Cont'd

II. 檢查正在修理、拆卸或從事裝卸貨物的船舶、調查海上工業意外事故 Inspections of Vessels Undergoing Repair or Demolition or Engaged in Cargo Handling, Investigations of Marine Industrial Accidents	2008	2009
A. 海上貨櫃檢查 Marine Containers Inspected	6 704	5 218
B. 海事工業安全檢查 (不包括海上貨櫃的檢查數目) Marine Industrial Safety Inspections (excluding number of marine containers inspected)		
1. 檢查正在修理的船舶 Inspections of Vessels Undergoing Repair	1 670	1 598
2. 檢查海事工程船舶 Inspections of Vessels Engaged in Marine Construction	51	119
3. 檢查遠洋船裝卸貨物工具 Cargo Gear Inspections on Ocean-going Vessels	216	211
4. 檢查遠洋船裝卸貨物 Stevedoring Inspections on Ocean-going Vessels	2 934	2 297
5. 檢查駁船裝卸貨物工具 Cargo Gear Inspections on Lighters	3 686	3 435
6. 檢查駁船裝卸貨物 Stevedoring Inspections on Lighters	1 307	1 469
總計 Total	9 864	9 129
C. 海事工業意外的調查及查詢數目 Marine Industrial Accidents Investigated/Inquired		
1. 調查致命的非海事工業意外 Non-marine Industrial Fatal Accidents Investigated	2	0
2. 調查致命的海事工業意外 Marine Industrial Fatal Accidents Investigated	2	1
3. 調查嚴重意外 Serious Accidents Investigated	8	3
4. 調查嚴重意外 (無傷亡) Serious Incidents (No Casualty) Investigated	0	0
5. 查詢非嚴重意外 Non-serious Accidents Inquired	251	183
總計 Total	263	187

表 27 – 續
TABLE 27 – Cont'd

II. 檢查正在修理、拆卸或從事裝卸貨物的船舶、調查海上工業意外事故 (續) Inspections of Vessels Undergoing Repair or Demolition or Engaged in Cargo Handling, Investigations of Marine Industrial Accidents (Cont'd)	2008	2009
D. 發生海事工業意外的數目 Marine Industrial Accidents Occurred <ol style="list-style-type: none"> 1. 修船意外總數 Total Ship Repair Accidents 2. 裝卸貨物意外總數 Total Cargo Handling Accidents 3. 海事工程意外總數 Total Marine Construction Accidents 		
總計 Total	304	223
E. 簽發修船許可證/轉介檢控小組的個案/發出警告信 Letters of Permission to Undertake Repairs Issued/Cases Referred to Prosecutions Unit/ Warning Letters Issued <ol style="list-style-type: none"> 1. 簽發修船許可證 Letters of Permission to Undertake Repairs Issued 2. 轉介檢控小組的個案 Cases Referred to Prosecutions Unit 3. 發出警告信數 Warning Letters Issued 		
總計 Total	5 129	3 903
F. 海事工業安全的宣傳及教育 Promotion and Education on Marine Industrial Safety <ol style="list-style-type: none"> 1. 發出安全指令 Safety Directions Issued 2. 出版或修訂的安全小冊子/單張/海報/貼紙數目 Number of Safety Pamphlets/Leaflets/Posters/Stickers Published or Revised 3. 出版或修訂的安全指南數目 Number of Safety Guides/Codes of Practice Published or Revised 4. 安全講座及研討會的舉辦數目 Number of Safety Talks and Seminars Conducted 		
總計 Total	24	35

資料來源： 海事處海事工業安全組
Data Source: Marine Industrial Safety Section, Marine Department

表 27 – 續
TABLE 27 – Cont'd

III. 香港註冊船舶的損失數目 ⁽¹⁾ Loss of Vessels Registered in Hong Kong ⁽¹⁾						
船舶類型 Class of Vessel	該類船隻數目 Number of Vessel		損失船隻數目 Number Lost		損失船隻百分率 Percentage Lost	
	2008	2009	2008	2009	2008	2009
公約船舶 (香港註冊) Convention (HK Registered)	1 135	1 267	1	1	0.1%	0.1%

註釋： (1) 指因遇險而導致損失的船舶。
Note: (1) Refers to loss of vessels due to casualty or accident.

資料來源： 海事處船舶註冊及商船海員管理處
Data Source: Shipping Registry and Mercantile Marine Office, Marine Department

IV. 2009 年海上意外事故統計 Marine Accidents in 2009									
意外事故類別 Type of Accident	香港水域範圍以內 ⁽¹⁾ Within Hong Kong Waters ⁽¹⁾					香港水域範圍以外 ⁽²⁾ Outside Hong Kong Waters ⁽²⁾			
	宗數 No. of Case	死亡人數 Persons Killed	受傷人數 Persons Injured	失蹤人數 Persons Missing	宗數 No. of Case	死亡人數 Persons Killed	受傷人數 Persons Injured	失蹤人數 Persons Missing	
碰撞 Collision	157	1	32	0	48	5	1	18	
擱淺/ 觸底 Stranding/ Striking	36	0	2	0	15	0	0	0	
沉沒/ 入水 Foundering/ Sinking	26	0	7	0	3	0	0	0	
火警/ 爆炸 Fire/ Explosion	29	0	2	0	16	6	2	1	
翻沉/ 傾斜 Capsized/ Listing	11	2	4	0	0	0	0	0	
接觸 Contact	43	0	2	0	18	0	0	0	
其他 Others	29	0	0	0	5	0	0	0	
總計 Total	331	3	49	0	105	11	3	19	

註釋： (1) 包括所有船舶的意外及傷亡數字 (如香港註冊及外國註冊船舶、本地領牌船隻、內河船隻、沿海船隻、政府船舶等等)。

(2) 只包括在香港註冊或領牌的船舶之意外及傷亡數字。

Notes: (1) Including accidents and casualties figures of all vessels (such as Hong Kong registered and foreign registered vessels, local licensed vessels, river trade vessels, coastal vessels, government launches, etc.).

(2) Including accidents and casualties figures for Hong Kong registered vessels or local licensed vessels only.

資料來源： 海事處海事意外調查組

Data Source: Marine Accident Investigation Section, Marine Department

表 27 – 續
TABLE 27 – Cont'd

V. 海上意外事故調查 Marine Accident Investigation		2008	2009
調查意外事故 《船舶及港口管制條例》	Accidents Investigated (Shipping and Port Control Ordinance)	22	28
初步研訊 《商船條例》	Preliminary Inquiries (Merchant Shipping Ordinance)	1	1
領港研訊 《領港條例》	Pilotage Inquiries (Pilotage Ordinance)	0	0
海事法庭	Marine Courts	0	0
調查委員會	Board of Inquiry	0	0
對調查委員會裁決提出上訴	Appeal against the Decision by Board of Inquiry	0	0

資料來源： 海事處海事意外調查組

Data Source: Marine Accident Investigation Section, Marine Department

表 28
TABLE 28

海員發證、註冊和僱用統計資料
Seafarers' Certification, Registration and Employment Statistics

A. 遠洋合格證書 Seagoing Certificates of Competency	2008		2009	
	申請人數 Number of Application	及格人數 Number of Success	申請人數 Number of Application	及格人數 Number of Success
1. 商船船長及高級船員 Master Mariner and Deck Officer				
一級甲板高級船員 (商船船長) Class 1 (Master Mariner)				
筆試 Written Examination	3	0	3	0
口試 Oral Examination	2	2	4	1
其他 Other Services	17	17	25	25
二級甲板高級船員 Deck Officer Class 2				
筆試 Written Examination	3	1	0	0
口試 Oral Examination	1	0	3	2
訊號 Signal	0	0	0	0
其他 Other Services	6	6	5	5
三級甲板高級船員 Deck Officer Class 3				
筆試 Written Examination	12	5	17	1
口試 Oral Examination	8	6	6	4
訊號 Signal	9	5	11	7
其他 Other Services	6	6	14	14
小計 Sub-total	67	48	88	59
2. 輪機師 Marine Engineer Officer				
一級輪機師 Marine Engineer Officer – Class 1				
甲部 Part A	2	0	2	1
乙部 Part B	0	0	1	1
其他 Other Services	10	10	22	22
二級輪機師 Marine Engineer Officer - Class 2				
甲部 Part A	13	1	24	4
乙部 Part B	6	1	17	3
其他 Other Services	1	1	12	12
三級輪機師 Marine Engineer Officer - Class 3				
筆試 Written Examination	10	3	3	2
其他 Other Services	52	52	35	35
小計 Sub-total	94	68	116	80
總計 Total	161	116	204	139

表 28 – 續
TABLE 28 – Cont'd

B. 內河航行合格證書 River Trade Certificates of Competency	2008		2009	
	申請人數 Number of Application	及格人數 Number of Success	申請人數 Number of Application	及格人數 Number of Success
1. 甲板高級船員 Deck Officer				
一級甲板高級船員 Deck Officer Class 1				
筆試 Written Examination	4	1	1	0
口試 Oral Examination	10	6	2	1
訊號 Signal	0	0	0	0
其他 Other Services	55	55	33	33
二級甲板高級船員 Deck Officer Class 2				
筆試 Written Examination	5	0	12	4
口試 Oral Examination	3	3	2	1
訊號 Signal	0	0	0	0
其他 Other Services	56	56	14	14
三級甲板高級船員 Deck Officer Class 3				
筆試 Written Examination	75	25	92	25
口試 Oral Examination	54	32	38	19
訊號 Signal	96	34	50	24
其他 Other Services	53	53	14	14
小計 Sub-total	411	265	258	135
2. 輪機師 Marine Engineer Officer				
一級輪機師 Marine Engineer Officer - Class 1				
其他 Other Services	22	22	7	7
二級輪機師 Marine Engineer Officer - Class 2				
其他 Other Services	36	36	5	5
三級輪機師 Marine Engineer Officer - Class 3				
其他 Other Services	22	22	4	4
小計 Sub-total	168	110	88	35
總計 Total	579	375	346	170

表 28 – 續
TABLE 28 – Cont'd

C.1 本地合格證書 ⁽¹⁾ Local Certificates of Competency ⁽¹⁾	2008		2009	
	申請人數 Number of Application	及格人數 Number of Success	申請人數 Number of Application	及格人數 Number of Success
1. 船長 Coxswain				
船長一級 Coxswain Grade 1	19	14	34	20
其它 Other Services	68	68	82	82
船長二級 Coxswain Grade 2	171	10	242	37
其它 Other Services	283	283	117	117
船長三級 Coxswain Grade 3	603	199	889	276
其它 Other Services	399	369	422	421
小計 Sub-total	1 543	943	1 786	953
2. 輪機操作員 Engine Operator				
輪機操作員一級 Engine Operator Grade 1	0	0	0	0
其它 Other Services	94	94	96	96
輪機操作員二級 Engine Operator Grade 2	13	5	18	3
其它 Other Services	11	11	25	25
輪機操作員三級 Engine Operator Grade 3	335	159	526	331
其它 Other Services	337	317	179	179
小計 Sub-total	790	586	844	634
總計 Total	2 333	1 529	2 630	1 587

C.2 遊樂船隻操作人合格證明書 ⁽¹⁾ Pleasure Vessel Operator Certificate of Competency ⁽¹⁾	2008		2009	
	申請人數 Number of Application	及格人數 Number of Success	申請人數 Number of Application	及格人數 Number of Success
遊樂船隻操作人一級 Pleasure Vessel Operator Grade 1	71	43	92	43
其它 Other Services	547	547	311	311
遊樂船隻操作人二級 Pleasure Vessel Operator Grade 2	3 711	1 721	4 563	2 276
其它 Other Services	392	392	444	444
總計 Total	4 721	2 703	5 410	3 074

註釋： (1) 其他服務包括有關證書批註、豁免、重新生效等事宜的申請。
由 2007 年 3 月 1 日起根據《商船（本地船隻）條例》（第 548 章）簽發的證書。

Note: (1) Other services include applications for endorsement, exemption and revalidation etc.
Certificates issued under Cap. 548 Merchant Shipping (Local Vessels) Ordinance from 01.03.2007.

表 28 – 續
TABLE 28 – Cont'd

D. 部門考試 Departmental Examinations	2008		2009	
	考試人數 Examined	及格人數 Passed	考試人數 Examined	及格人數 Passed
一級本地船長 Coxswain Grade 1	0	0	0	0
二級本地船長 Coxswain Grade 2	60	11	88	20
三級本地船長 Coxswain Grade 3	21	8	25	11
一級輪機操作員 Engine Operator Grade 1	0	0	0	0
二級輪機操作員 Engine Operator Grade 2	30	14	24	7
三級輪機操作員 Engine Operator Grade 3	44	8	92	29
總計 Total	155	41	229	67

E. 其它考試/評定 Other Examinations/Assessments	2008		2009	
	申請人數 Number of Application	及格人數 Number of Success	申請人數 Number of Application	及格人數 Number of Success
救生艇筏熟練操作證書 Proficiency in Survival Craft Certificate	2	2	0	0
高級水手/水手證書 AB/EDH Certificate	1	1	0	0
船舶保安主任證書 Certificate of Proficiency of Ship Security Officer	1 762	1 762	923	923
類型級別證書 (考試、重新生效及夜航批准) Type Rating Certificate (Examination, Revalidation and Night Service Approval)	720	716	529	529
香港執照 Hong Kong Licence	11 358	11 358	11 698	11 698
本地豁免 Local Exemption	5	5	13	13
總計 Total	13 848	13 844	13 163	13 163

資料來源： 海事處海員發證組
Data Source: Seafarers' Certification Section, MD

表 28 – 續
TABLE 28 – Cont'd

F. 截至 2009 年 12 月 31 日為止的海員註冊人數 Seafarer's Registration as at 31.12.2009			
根據第478章註冊的海員 Seafarers Registered Under Cap.478	第一部 Part I	第二部 Part II	合計 Total
		3 754	1 329

G. 2009 年所簽發的僱用登記簿數目 Employment Registration Books Issued, 2009		
續發簿 Subsequent Books		7
補發簿 Replacement Books		7
新海員簿 New Entrants Books		202
總計 Total		216

H. 2009 年海員就業統計數字 Seafarers Employment Statistics, 2009				
期間 Period	僱用海員方式 Seafarers Employed Through			
	核准公司名冊 Permitted C.R.	總名冊 G.R.	緊急僱用/重新僱用等 Emergency/Re-employment, etc.	總計 Total
2009年第一季 1st Quarter 2009	59	6	-	65
2009年第二季 2nd Quarter 2009	72	2	104	178
2009年第三季 3rd Quarter 2009	28	1	574	603
2009年第四季 4 th Quarter 2009	29	4	246	279
總計 Total	188	13	924	1 125

表 28 – 續
TABLE 28 – Cont'd

I. 船公司及職位統計數字 Companies and Posts Statistics	
截至2009年12月31日為止在商船海員管理處登記僱用本港註冊海員的船公司數目 Shipping companies listed with M. M. Office to employ Hong Kong registered seafarers as at 31.12.2009	29
2009年按船公司所交周年報表而編製的本港海員就業職位 Posts filled by Hong Kong seafarers as compiled from annual returns submitted by shipping companies, 2009	1 641

J. 2009年訂立和終結的香港註冊船舶船員協議條款 Crew Agreement of Hong Kong Registered Ships Opened and Closed, 2009				
	所訂立的協議 Agreements Opened		終結的協議 Agreements Closed	
	在香港境內 In Hong Kong	在香港境外 Outside Hong Kong	在香港境內 In Hong Kong	在香港境外 Outside Hong Kong
船員協議條款數目 No. of agreements	50	947	48	921
總計 Total	997		969	

K. 香港註冊船舶僱用和解職的海員人次⁽¹⁾ Number of Employment and Discharge of Seafarers by Hong Kong Registered Ships⁽¹⁾			
	2007	2008	2009
所僱用的海員人次 No. of employment of seafarers	46 661	50 485	59 640
解職的海員人次 No. of discharge of seafarers	44 096	49 077	58 140

註釋： (1) 數字包括在香港以外地方註冊的海員。

Note: (1) The figures include seafarers registered outside Hong Kong.

資料來源： (A) – (E) 海事處海員發證組
(F) – (K) 海事處註冊及商船海員管理處

Data Sources: (A) – (E) Seafarers' Certification Section,
Marine Department
(F) – (K) Shipping Registry and
Mercantile Marine Office,
Marine Department

表 29
TABLE 29

香港註冊船舶統計資料
Statistics on Ships Registered in Hong Kong

A. 2008 和 2009 年年底的船舶數目和噸位
Number of Ships and Tonnage as at end of 2008 and 2009

	船舶數目 No. of ships	淨噸位 ⁽¹⁾ Net tonnage ⁽¹⁾	總噸位 ⁽¹⁾ Gross tonnage ⁽¹⁾
(i) 2008 年 12 月 31 日船舶註冊概況 ⁽²⁾ On register as at 31.12.2008 ⁽²⁾	1 361	22 147 056	39 642 972
(ii) 2009 年註冊的船舶 Ships Registered in the year of 2009	269	4 739 338	8 908 596
(iii) 2009 年取消註冊的船舶 Ships De-registered in the year of 2009	131	1 765 033	3 205 026
(iv) 2009 年 12 月 31 日船舶註冊概況 On register as at 31.12.2009	1 496	24 867 454	44 904 042

註釋： (1) 淨噸位及總噸位以每單位 100 立方呎計算。
(2) 因部分註冊船舶於 2009 年更改噸位，故 (i) + (ii) - (iii) 並不等於 (iv)。

Notes: (1) Net and gross tonnages are in units of 100 cubic feet.
(2) Due to alteration of tonnages of some ships already on register in 2009, (i) + (ii) - (iii) is not equal to (iv).

B. 按總噸位分析於 2009 年年底在香港註冊的船舶數目
Ships Registered in Hong Kong by Gross Tonnage Distribution, as at end of 2009

總噸位分配 Gross Tonnage Distribution	船舶數目 No. of Ships
500 以下 Under 500	144
500 - 999	62
1 000 - 1 999	31
2 000 - 2 999	10
3 000 - 3 999	23
4 000 - 4 999	32
5 000 - 9 999	176
10 000 - 14 999	63
15 000 - 19 999	154
20 000 - 24 999	73
25 000 - 29 999	218
30 000 - 34 999	83
35 000 - 39 999	124
40 000 - 44 999	64
45 000 - 49 999	10
50 000 - 59 999	43
60 000 - 69 999	23
70 000 - 79 999	25
80 000 - 89 999	51
90 000 - 99 999	26
100 000 - 149 999	28
150 000 及以上 - 150 000 and above	33
總計 Total	1 496

表 29 – 續
TABLE 29 – Cont'd

C. 按船隻種類分析於 2009 年度在香港註冊及取消註冊的船舶數目
Ship Registered and De-registered in Hong Kong by Ship Type during 2009

註冊船隻種類 Type of Ship Registered	註冊船舶 Ship Registered		取消註冊船舶 Ship De-registered	
	船舶數目 No. of Ships	總噸位 Gross Tonnage	船舶數目 No. of Ships	總噸位 Gross Tonnage
散裝貨船 Bulk Carrier	72	2 858 211	42	1 454 078
化學品船 Chemical Tanker	34	515 169	5	33 389
集裝箱船 Container	49	1 509 554	34	753 064
氣體運輸船 Gas Carrier	8	355 581	-	-
雜貨船 General Cargo Ship	35	336 600	16	220 056
高速船 High Speed Craft	4	2 800	2	1 021
躉船 Lighter and Barge	7	109 637	2	11 440
油輪 Oil Tanker	40	2 186 218	17	585 660
沙石/雜貨/ 油輪 Ore/Bulk/ Oil Carrier	8	983 822	3	89 072
滾裝卸式船 Roll On/Roll Off	3	50 166	4	56 702
拖船 Tug	-	-	1	188
帆船/遊艇 Yacht	9	838	5	356
總計 Total	269	8 908 596	131	3 205 026

資料來源： 海事處船舶註冊處
Data Source: Shipping Registry, Marine Department

表 30
TABLE 30

政府船隊統計資料
Government Fleet Statistics

	項目	Items	2008	2009
1.	開支預算總額 ⁽¹⁾ (百萬元)	Total expenditure estimate ⁽¹⁾ (\$M)	396.6 ⁽²⁾	397.3 ⁽³⁾
2.	截至 12 月 31 日的政府船隊科員工總數 (包括船員)	Total no. of GFD staff (including crew) as at 31 st December	543	529
3.	(i) 建成及交收的政府新船	(i) Government new vessels built and delivered	40	69
	(ii) 建造中的政府新船	(ii) Government new vessels under construction	21	13
	(iii) 已完成的政府新船計劃	(iii) Government new vessel projects completed	7	19
	(iv) 正進行中的政府新船計劃	(iv) Government new vessel projects in progress	10	5
4.	新船招標/報價	Tenders/Quotations called for new vessels	7	13
5.	新船合約	Contracts awarded for new vessels	7	14
6.	已完成的合約及購買規格書	Contracts and procurements specifications completed	14	27
7.	(i) 政府船舶總數	(i) Total number of vessels	766	795
	a. 大型機動船舶	a. major mechanized vessels	106	101
	b. 大型高速船	b. high speed craft (large-type)	15	15
	c. 其他雜類型船舶	c. other miscellaneous-class vessels	645	679
	(ii) 配備海事處人員的政府船舶	(ii) Government craft manned by Marine Department (MD)	47	45
	(iii) 海事處可供調配船員的時數率 (%)	(iii) MD crew staff time available for deployment (%)	88.5	86.6
	(iv) 已處理報廢的政府船舶	(iv) Government craft disposed	26	61
8.	(i) 大型機動船舶及高速船的可提供使用率	(i) Availability of major mechanized vessels and high speed craft (large-type) (%)	87.8 ⁽²⁾	86.4
	(ii) 大型機動船舶及高速船的平均數目	(ii) Average number of major mechanized vessels and high speed craft (large-type)	119.9 ⁽²⁾	117.2
	(iii) 船舶維修後首次試航成功率	(iii) Vessel seatrial successful rate in first attempt after repair maintenance service (%)	88.8 ⁽²⁾	93.6
	(iv) 政府船隊維修保養服務使用者滿意率 (%)	(iv) Users satisfactory level on Government fleet repair maintenance service (%)	99.0 ⁽²⁾	99.1
9.	大型機動船舶及高速船(包括它們的機動子艇)保養費總額 ⁽¹⁾ (百萬元)	Total maintenance cost of major mechanized vessels and high speed craft (large-type) (including their mechanized daughter boats) ⁽¹⁾ (\$M)	126.1 ⁽²⁾	138.4 ⁽³⁾
10.	大型機動船舶及高速船(包括它們的機動子艇)平均保養費 ⁽¹⁾ (百萬元)	Average maintenance cost of major mechanized vessels and high speed craft (large-type) (including their mechanized daughter boats) ⁽¹⁾ (\$M)	1.1 ⁽²⁾	1.2 ⁽³⁾
11.	(i) 船舶維修定期保養合約安排總數	(i) Total number of vessel maintenance term contract (TC) arrangements	42	30
	a. 根據合約保養的船舶的數目	a. Number of vessels maintained under TC	116	106
	b. 根據合約保養的主機的數目	b. Number of main engines repaired under TC	231	207
	(ii) 採購機械零件的定期合約數目	(ii) Number of TC for procurement of machinery spare parts	15	16
12.	配備海事處人員的政府船舶肇事個案	Accidents involving Government Craft manned by MD		
	(i) 肇事政府船舶個案數目	(i) Number of government vessels involved	5	7
	(ii) 工傷意外傷亡數目	(ii) Number of casualties in industrial accidents		
	a. 船塢員工	a. Dockyard staff	3	7
	b. 船員	b. Crew	6	5
	(iii) 因工傷損失人-日總數	(iii) Total Number of man-days lost		
	a. 船塢員工	a. Dockyard staff	394	271
	b. 船員	b. Crew	127	88
13.	參加職業安全及健康課程的政府船塢人員人數	Number of Attendees of Government Dockyard to Occupational Safety and Health (OSH) training courses		
	(i) 職業安全健康局舉辦課程	(i) Organized by the OSH Council	34	32
	(ii) 政府船隊科工業安全組舉辦的課程	(ii) Organized by the Industrial Safety Section, GFD	84	84
	(iii) 其他職安健課程	(iii) Other OSH courses	53	119

註釋： (1) 指財政年度內的數字 (由本年四月一日至下年三月三十一日)。

(2) 修定數字

(3) 估計數字

Notes: (1) Refer to financial year figures (i.e. from 1 April of current year to 31 March of next year).

(2) Revised Figures

(3) Estimated figures

表 31
TABLE 31

政府船舶所屬部門及可用率情況 (2009 年 12 月 31 日)
Departmental Ownership and Availabilities of Government Vessels (as at 31 December 2009)

船舶類型 Vessel Type	所屬部門 Ownership														總計 Total
	AFCD 漁農自然護理署	AMS 醫療輔助隊	CAS 民衆安全服務處	CEDD 土木工程拓展署	CSD 懲教署	C&ED 香港海關	EPD 環境保護署	FSD 消防處	DH 衛生署	HKPF 香港警務處	Imm D 入境事務處	LCSD 康樂及文化事務署	MD 海事處	WSD 水務署	
機動子艇及泳灘艇 Mechanized Daughter Boats & Beach Craft	-	-	-	-	-	7	-	9	-	37	-	130	2	-	185
浮橋物/泳灘浮台及浮筏 Floating Bridge Structure/Beach Platform & Rafts	-	-	-	-	-	-	-	1	-	8	-	319	-	-	328
機動及非機動充氣式橡皮艇 Mechanized and Non-mechanized Inflatable Boats	4	1	10	-	-	1	1	13	-	12	-	-	-	2	44
駁船 Lighters	-	-	-	-	-	-	-	1	-	6	-	-	22	-	29
小型機動船及小艇 Minor Mechanized Vessels & Dinghies	9	-	2	-	-	-	-	3	-	9	-	-	6	4	33
大型機動船舶 Major Mechanized Vessels	3	-	-	3	2	7	1	9	1	39	7	-	29	-	101
大型高速船 High Speed Craft (large type)	-	-	-	-	-	4	-	-	-	11	-	-	-	-	15
中型高速船 High Speed Craft (medium type)	8	-	-	-	-	2	-	2	-	43	-	-	5	-	60
總計 Total	24	1	12	3	2	21	2	38	1	165	7	449	64	6	795
大型機動船及高速船平均可提供使用率 Average Availability of Major Mechanized Vessels & High Speed Craft(large-type) (%)	92.8	-	-	87.9	92.5	86.5	92.7	85.4	86.5	84.1	85.9	-	88.9	-	86.4

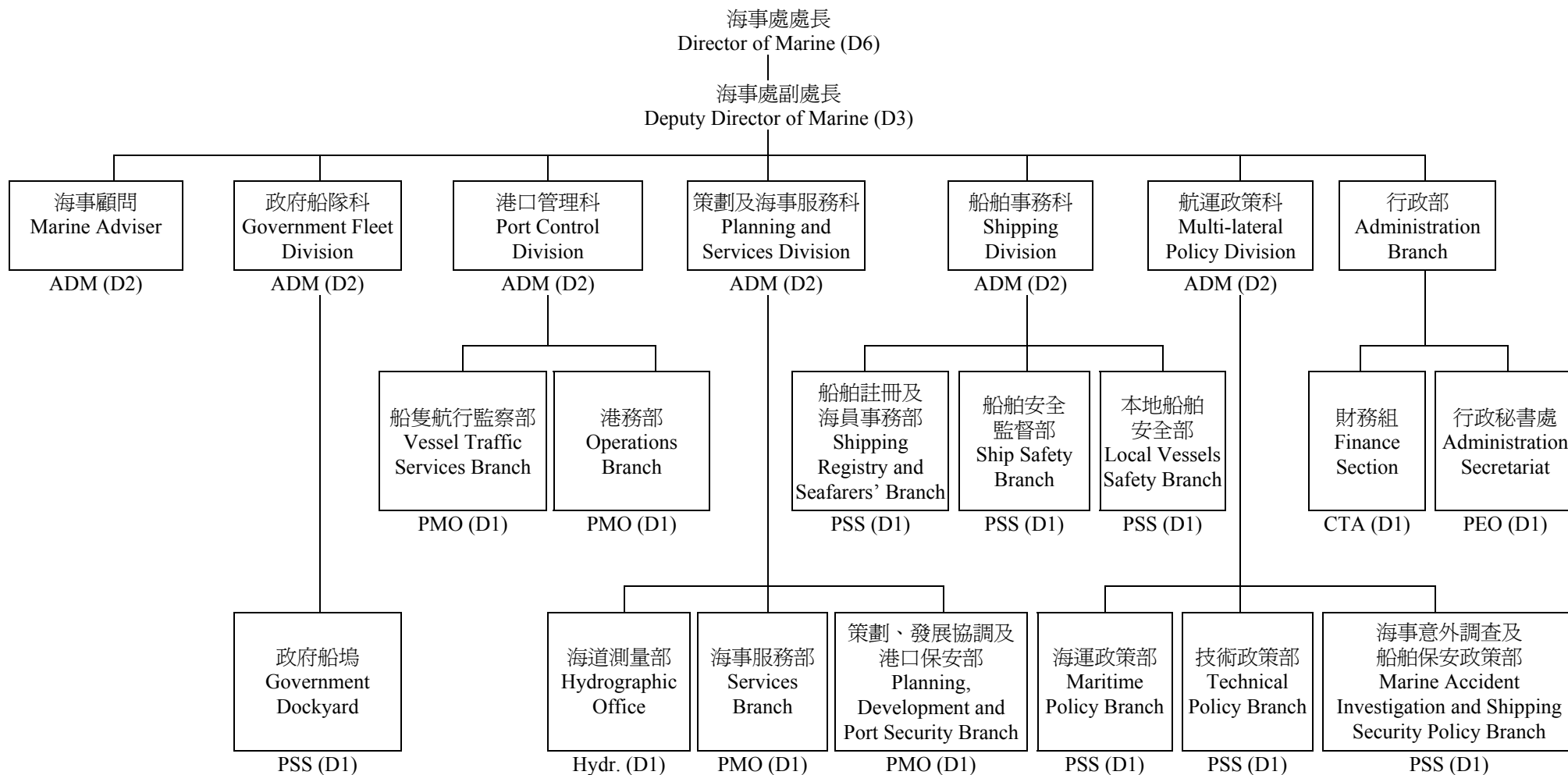
資料來源： 海事處政府船隊科
Data Source: Government Fleet Division, MD

附錄

Appendices

附錄 A
APPENDIX A

海事處組織架構圖
Marine Department Organization Chart



- | | | | | |
|---------|---------------|------------------------------|---------------------|---------------------------------|
| 圖例： | ADM = 海事處助理處長 | Assistant Director of Marine | PEO = 首席行政主任 | Principal Executive Officer |
| Legend: | PMO = 首席海事主任 | Principal Marine Officer | CTA = 總庫務會計師 | Chief Treasury Accountant |
| | PSS = 首席驗船主任 | Principal Surveyor of Ships | D6 = 首長薪級第六點 (如此類推) | Directorate Level 6 (and so on) |
| | Hydr. = 海道測量師 | Hydrographer | | |

附錄 B
APPENDIX B

海事處的編制和實際員額 (截至 2009 年 12 月 31 日)
Marine Department Establishment and Strength (as at 31 December 2009)

首長級人員 Directorate Officers		編制 Establishment	實際員額 Strength
海事處處長	Director of Marine (D6)	1	1
海事處副處長	Deputy Director of Marine (D3)	1	1
海事處助理處長	Assistant Director of Marine (D2)	6 +1 [♦]	7
首席海事主任	Principal Marine Officer (D1)	4	4
首席驗船主任	Principal Surveyor of Ships (D1)	7	7
首席行政主任	Principal Executive Officer (D1)	1	1
總庫務會計師	Chief Treasury Accountant (D1)	1	1
海道測量師	Hydrographer (D1)	1	1
部門職系 Departmental Grade			
高級海事主任	Senior Marine Officer	18	18
海事主任	Marine Officer	39 +1 [♦]	33
海事監督	Marine Controller	13 +1 [♦]	14
助理海事監督	Assistant Marine Controller	42 +2 [♦]	41
高級船舶安全主任	Senior Shipping Safety Officer	1	1
船舶安全主任	Shipping Safety Officer	6	3
高級驗船主任	Senior Surveyor of Ships	16	16
驗船主任	Surveyor of Ships	29	25
高級助理船務主任	Senior Assistant Shipping Master	22	20
助理船務主任	Assistant Shipping Master	1	1
一級海事督察	Marine Inspector I	89 +1 [♦]	82
二級海事督察	Marine Inspector II	105	99
輔航設備監督	Superintendent of Aids to Navigation	1	1
助理輔航設備監督	Assistant Superintendent of Aids to Navigation	2	2
總驗船督察	Chief Ship Inspector	2 +1 [♦]	3
高級驗船督察	Senior Ship Inspector	11	9
驗船督察	Ship Inspector	21	23
助理驗船督察	Assistant Ship Inspector	2	2

附錄 B - 續
APPENDIX B - Cont'd

部門職系 Departmental Grade		編制 Establishment	實際員額 Strength
小輪船員督導員	Launch Crew Supervisor	3	3
高級小輪船長	Senior Launch Master	61 +4♦	57
小輪船長	Launch Master	48	46
小輪助理員	Launch Assistant	223 +2♦	207
高級小輪大偈	Senior Launch Mechanic	1	0
小輪大偈	Launch Mechanic	1	1
海事工業安全督察	Marine Industrial Safety Inspector	7 +2♦	5
測量服務員	Surveyor Attendant	1	0
一般職系 General Grade			
高級統計師	Senior Statistician	1	1
一級統計主任	Statistical Officer I	1	1
二級統計主任/ 見習統計主任	Statistical Officer II/ Student Statistical Officer	3	3
系統經理	Systems Manager	1	1
一級系統分析/ 程序編製主任	Analyst/Programmer I	4	3
二級系統分析/ 程序編製主任	Analyst/Programmer II	5	2
高級庫務會計師	Senior Treasury Accountant	1	1
庫務會計師	Treasury Accountant	3	3
高級會計主任	Senior Accounting Officer	1	1
一級會計主任	Accounting Officer I	1	1
二級會計主任	Accounting Officer II	3	3
總行政主任	Chief Executive Officer	1	1
高級行政主任	Senior Executive Officer	1	1
一級行政主任	Executive Officer I	7	4
二級行政主任	Executive Officer II	2	5
高級法定語文主任	Senior Official Languages Officer	1	1
一級法定語文主任	Official Languages Officer I	2	2
二級法定語文主任	Official Languages Officer II	2	2

附錄 B - 續
APPENDIX B - Cont'd

一般職系 General Grade		編制 Establishment	實際員額 Strength
高級電子工程師	Senior Electronics Engineer	1	1
電子工程師/ 助理電子工程師	Electronics Engineer/ Assistant Electronics Engineer	2	2
土地測量師/ 助理土地測量師	Land Surveyor/ Assistant Land Surveyor	2	2
電子督察	Electronics Inspector	1	1
助理空氣調節督察	Assistant Air-Conditioning Inspector	1	1
首席測量主任 (工程)	Principal Survey Officer (Engineering)	1	1
高級測量主任 (工程)	Senior Survey Officer (Engineering)	4	3
測量主任 (工程)/ 見習測量主任 (工程)	Survey Officer (Engineering)/ Survey Officer Trainee (Engineering)	11	12
首席技術主任 (製圖)	Principal Technical Officer (Cartographic)	1	1
高級技術主任 (製圖)	Senior Technical Officer (Cartographic)	3	3
技術主任 (製圖)/ 見習技術主任 (製圖)	Technical Officer (Cartographic)/ Technical Officer Trainee (Cartographer)	5	5
高級文書主任	Senior Clerical Officer	6	6
文書主任	Clerical Officer	28 +4 [♦]	25
助理文書主任	Assistant Clerical Officer	68 +1 [♦]	68
文書助理	Clerical Assistant	115 +1 [♦]	113
辦公室助理員	Office Assistant	8	6
高級物料供應主任	Senior Supplies Officer	1	1
物料供應主任	Supplies Officer	1	1
助理物料供應主任	Assistant Supplies Officer	1	1
高級物料供應員	Senior Supplies Supervisor	1	0
一級物料供應員	Supplies Supervisor I	2	2
二級物料供應員	Supplies Supervisor II	11	12
助理物料供應員	Supplies Assistant	3	3
物料供應服務員	Supplies Attendant	2	2
高級私人秘書	Senior Personal Secretary	1	1
一級私人秘書	Personal Secretary I	6	6
二級私人秘書	Personal Secretary II	20	18

附錄 B - 續
APPENDIX B - Cont'd

一般職系 General Grade		編制 Establishment	實際員額 Strength
打字督導	Supervisor of Typing Services	1	1
機密檔案室助理	Confidential Assistant	1	1
繕校員	Calligraphist	2	2
打字員	Typist	6	5
汽車司機	Motor Driver	4	4
共通職系 Common Grade			
總技術主任	Chief Technical Officer	2	2
高級電氣督察	Senior Electrical Inspector	2	2
電氣督察	Electrical Inspector	4	3
助理電氣督察	Assistant Electrical Inspector	2	2
高級機械督察	Senior Mechanical Inspector	7	7
機械督察	Mechanical Inspector	10	10
助理機械督察	Assistant Mechanical Inspector	5	3
一級監工	Works Supervisor I	12	11
二級監工	Works Supervisor II	7	6
高級技工	Senior Artisan	40 +1 [◆]	40
技工	Artisan	100 +1 [◆]	74
丈量員	Chainman	4	4
產業看管長	Head Property Attendant	1	0
產業看管員	Property Attendant	4	3
二級工人	Workman II	33	31
總計	Total	1 403	1 279

◆ 編外職位

◆ Supernumerary post

附錄 C
APPENDIX C

2009 年海事處訓練組舉辦的課程
Training Courses Conducted by Training Section, Marine Department in 2009

1.	國際海空海上搜尋救助課程 IAMSAR Maritime SAR Course	10 days	MO, Marpol, CHI(MRCC)	2	17
2.	香港水域雷達操作員課程 Radar Operator Course for Hong Kong Waters	7 days	LM, C&E, FSD, Marpol, OFTA	3	24
3.	基本小型船舶操縱技術課程 Basic Boat Handling Skills Course	5 days	LM, C&E, FSD	1	6
4.	海事督察訓練課程 - 甲部 MI Training Course - Part A	30 days	MI II	1	24
5.	民安隊海上油污訓練課程 CAS Oil Pollution Course	2 days	CAS	2	38
6.	海上油污應變基本課程 Oil Spill Response Basic Course	2 days	MI, Artisan, Workman	1	8
7.	領港員模擬船操縱課程 Pilotage Simulation Course	2 days	HKPA(A)	1	2
8.	全球海上遇險及安全系統導師課程 GMDSS Instructor Course	1 day	SMO, MO, OFTA, Marpol	1	4
9.	全球海上遇險及安全系統 (限用操作員證書課程) GMDSS (Restricted Operator's Certificate Course)	5 days	MI II	4	23
10.	船舶模擬器導師課程 Ship Simulator Instructor Course	2 days	SMO, MO, Marpol	1	5
11.	船舶交通服務操作員深造課程 - 海外人士 VTS Operator Enhancement Course - Overseas	10 days	CHI(VTS)	3	25
12.	船舶交通服務重新生效課程 VTS Revalidation Course	2 days	MC	1	2
13.	船舶交通服務操作員課程 VTR Training Course	73 days	AMC	1	7
14.	船舶交通服務操作員增潤課程 VTS Operator Refreshment Course	2 days	MC, AMC	4	25
15.	電子海圖顯示及資料系統基本課程 ECDIS Basic Course	1 day	MI	4	24
16.	電子海圖導師培訓課程 ECDIS Train-the-Trainer Course	3 days	Marpol, C&E	1	6
17.	政府人員基本海事知識課程 Basic Maritime Knowledge for Government Officers	3 days	C&E	1	6
18.	香港水域自動雷達標繪儀和高速船雷達課程 ARPA and High Speed Craft Radar Course for Hong Kong Waters	3 days	Marpol, C&E	1	8
總計 Total				33	254

@ 請參閱下頁的參加學員編碼目錄。

@ Please refer to the coding table of target participants on the next page.

附錄 C – 續
APPENDIX C – Cont'd

參加海事處在二零零九年舉辦的訓練課程的機構及職位：

List of Organisations/Posts Participated in the Training Courses Conducted by Marine Department in 2009:

機構	Organisations	縮寫 Abbreviation
香港海關	Customs and Excise Department	C&E
民眾安全服務處	Civil Aid Service	CAS
中國(海上救助中心)官員	Chinese (MRCC) Personnel	CHI(MRCC)
中國(船隻航行服務)官員	Chinese (VTS) Personnel	CHI (VTS)
消防處	Fire Services Department	FSD
香港領港會(見習領港員)	Hong Kong Pilot Association (Apprentice Pilots)	HKPA(A)
香港水警	Marine Police	Marpol
香港電訊管理局	Office of Telecommunication Authority	OFTA

職位	Posts	縮寫 Abbreviation
助理海事監督	Assistant Marine Controller	AMC
技工	Artisan	Artisan
小輪船長	Launch Master	LM
海事監督	Marine Controller	MC
海事督察	Marine Inspector	MI
二級海事督察	Marine Inspector II	MI II
海事主任	Marine Officer	MO
高級海事主任	Senior Marine Officer	SMO
工人	Workman	Workman

附錄 D
APPENDIX D

2009 年海事處訪客
Visitors of the Marine Department, 2009

本處於 2009 年接待了以下訪客：

During the year of 2009, the Department hosted the following visitors:

編號 No.	訪問日期 Date of Visit	機構/代表 Organization/Representative
1.	05.01.2009 – 09.01.2009	廣東海事局 (港口國監督檢查員交流) Guangdong Maritime Safety Administration (PSCO Exchange)
2.	09.01.2009	香港工程師學會 Hong Kong Institution of Engineers
3.	16.01.2009	政府資訊科技總監辦公室代表 Representatives of OGCIO
4.	18.02.2009	香港物流管理人員協會 Hong Kong Logistics Management Staff Association
5.	18.02.2009	哈斯基石油中國有限公司 Husky Oil China Ltd.
6.	20.02.2009	美國海岸警衛隊太平洋區指揮官 USCG Pacific Area Commander
7.	27.02.2009	日本國土交通省國際臨海開發研究中心 (就港口保安研究進行考察) The Overseas Coastal Area Development Institute of Japan under the Ministry of Land, Infrastructure, Transport and Tourism of Japan (Visit on Port Security Research)
8.	03.03.2009	芬蘭國會就業與平等委員會代表團 Delegation from the Employment and Equality Committee of the Finnish Parliament
9.	06.03.2009	英國海道測量師 UK Hydrographer
10.	13.03.2009	荃灣聖芳濟中學 St. Francis Xavier's School
11.	19.03.2009	嘉陵有限公司 Gallany Ltd.
12.	21.03.2009	香港扶輪社 Rotary Club of Hong Kong
13.	23.03.2009	國際救生會永遠總理 Life Governor, International Life Saving Federation
14.	23.03.2009	國立台灣海洋大學 (由香港商船高級船員協會的代表陪同) National Taiwan Ocean University (Accompanied by Representatives of the Merchant Navy Officers' Guild Hong Kong)
15.	03.04.2009	英華書院交通學會 Ying Wa College Transport Society
16.	06.04.2009	華林集團有限公司代表、荷蘭總領事館代表及荷蘭總警司 Representatives of Wallem Group Limited and the Netherlands Consulate-General, and Chief Superintendent of Police, Netherlands

附錄 D – 續
APPENDIX D – Cont'd

本處於 2009 年接待了以下訪客：

During the year of 2009, the Department hosted the following visitors:

編號 No.	訪問日期 Date of Visit	機構/代表 Organization/Representative
17.	08.04.2009	海事訓練學院 Maritime Services Training Institute
18.	09.04.2009	中國交通運輸部南海救助局 Nanhai Rescue Bureau, Ministry of Transport, China
19.	14.04.2009 – 16.04.2009	中國漁業船舶檢驗局 Register of Fishing Vessel, China
20.	15.04.2009	香港專業教育學院（摩理臣山分校） Hong Kong Institute of Vocational Education (Morrison Hill Campus)
21.	16.04.2009	中國交通運輸部救助打撈局 Rescue and Salvage Bureau, Ministry of Transport, China
22.	08.05.2009	香港專業教育學院（青衣分校） Hong Kong Institute of Vocational Education (Tsing Yi Campus)
23.	19.05.2009	香港中文大學學生 Students from The Chinese University of Hong Kong
24.	21.05.2009	巴西商貿代表團 Brazilian Trade Mission
25.	22.05.2009	太古保險公司 Swire Reinsurance Company Ltd.
26.	22.05.2009	挪威船級社 Det Norske Veritas
27.	27.05.2009	2009 年航運、港口及機場國際論壇參加者（維港遊） Participants of the International Forum on Shipping, Ports and Airports (IFSPA) 2009 (Harbour Tour)
28.	24.06.2009	Seaports Publication Group（2010 年香港港口手冊及指南出版事宜） Seaports Publication Group (on Publication of The Port of Hong Kong Handbook & Directory 2010)
29.	29.06.2009	培英中學 Pui Ying Secondary School
30.	09.07.2009	蘇格蘭國際發展局（香港辦事處） Scottish Development International (Hong Kong Office)
31.	21.07.2009	名古屋港管理組合議會 Nagoya Port Authority
32.	06.08.2009	江蘇省交通部門代表團 Delegation from Various Transport Departments of Jiangsu Province
33.	17.08.2009	烏克蘭國防部副部長及代表團 Delegation Led by Deputy Minister of Defence, Ukraine
34.	25.08.2009	韓國釜山港口管理局代表團 Delegation from the Busan Port Authority, Korea

附錄 D – 續
APPENDIX D – Cont'd

本處於 2009 年接待了以下訪客：

During the year of 2009, the Department hosted the following visitors:

編號 No.	訪問日期 Date of Visit	機構/代表 Organization/Representative
35.	29.08.2009	香港童軍總會 Scout Association of Hong Kong
36.	09.09.2009	德國物流界代表團 Delegation from the Logistics Sector of Germany
37.	11.09.2009	香港聯合船塢集團有限公司 Hongkong United Dockyards Limited
38.	14.09.2009 – 18.09.2009	深圳海事局（港口國監督檢查員交流） Shenzhen Maritime Safety Administration (PSCO Exchange)
39.	16.09.2009	深圳市交通運輸委員會副主任及代表團 Delegation Led by Deputy Director of the Transport Committee, Shenzhen Municipality
40.	17.09.2009	香港運輸物流學會 Chartered Institute of Logistics and Transport in Hong Kong
41.	21.09.2009	美國駐香港總領事館官員 Officials from US Consulate-General Hong Kong
42.	29.09.2009	橫濱海上交通聯會 Yokohama Sea Transport Association
43.	16.10.2009	瑞典哥德堡港代表團 Delegation from the Port of Gothenburg, Sweden
44.	29.10.2009	越南交通部代表團 Vietnamese Ministry of Transport Delegation
45.	06.11.2009	出席亞太經合組織港口服務網絡理事會會議的加拿大交通部代表團 Canadian Delegation to APEC Port Services Network Council Meeting from Transport Canada
46.	10.11.2009	中國近海石油服務（香港）有限公司 China Ocean Oilfields Services (Hong Kong) Limited
47.	03.12.2009	交通銀行代表 Representatives of the Bank of Communications
48.	04.12.2009	深圳海事局 Shenzhen Marine Department
49.	07.12.2009	觀塘區議會代表 Representatives of Kwun Tong District Council
50.	16.12.2009	新加坡民防部隊 Singapore Civil Defence Force
51.	17.12.2009	香港消防處 Hong Kong Fire Services Department
52.	22.12.2009	日本國土交通省國際臨海開發研究中心研究員安部智文先生及白土廣信先生 Mr. Motohisa ABE and Mr. Hironobu Shiratsuchi, Researchers from the Overseas Coastal Area Development Institute of Japan under the Ministry of Land, Infrastructure, Transport and Tourism of Japan

附錄 E
APPENDIX E

2009年新訂海事法例
New Maritime Legislation, 2009

二零零九年一月一日至二零零九年十二月三十一日期間通過的海事及航運法例列載如下：
The following maritime and shipping legislation was enacted during the year under review
(1.1.2009 –31.12.2009):

法例名稱 Title	法例編號 L.N. No.
2009年商船(註冊)(費用及收費)(修訂)規例 Merchant Shipping (Registration) (Fees and Charges) (Amendment) Regulation 2009	101 (11.5.2009)
2009年商船(海員)(費用)(修訂)規例 Merchant Shipping (Seafarers) (Fees) (Amendment) Regulation 2009	102 (11.5.2009)
2009年商船(本地船隻)(費用)(修訂)規例 Merchant Shipping (Local Vessels) (Fees) (Amendment) Regulation 2009	103 (11.5.2009)
2009年商船(本地船隻)(寬免費用)規例 Merchant Shipping (Local Vessels) (Fee Concession) Regulation 2009	141 (23.6.2009)
2009年商船(安全)(修訂)條例 Merchant Shipping (Safety) (Amendment) Ordinance 2009	10 (2.7.2009)
2008年商船(本地船隻)(一般)(修訂)規例(生效日期)公告 Merchant Shipping (Local Vessels) (General) (Amendment) Regulation 2008 (Commencement) Notice	196 (16.10.2009)
燃油污染(法律責任及補償)條例(生效日期)公告 Bunker Oil Pollution (Liability and Compensation) Ordinance (Commencement) Notice	235 (23.11.2009)

附錄 F
APPENDIX F

2009 年輔航設備
Aids to Navigation, 2009

A. 使用中的輔航設備

AIDS TO NAVIGATION IN USE

	輔航設備 AIDS TO NAVIGATION	截至 2009 年 12 月 31 日 as at 31.12.2009
1.	燈浮標 Lighted Buoy	120
2.	燈航標 Lighted Beacon	420
3.	雷達應答標 Racon	1
4.	霧角 Fog Horn	7

B. 本年新設的輔航裝置

NEW AIDS ESTABLISHED DURING THE YEAR

1.	西貢新公眾碼頭 Sai Kung New Public Pier	一個以太陽能操作的新燈航標於 3 月 13 日設立，用以標示西貢新公眾碼頭。 A solar power operated light was established to mark the Sai Kung New Public Pier on 13-3-09.
2.	昂船洲橋東北紅 Stonecutters Bridge N.E. Red	一個以市電操作的新燈航標於 12 月 18 日在昂船洲大橋東北面設立，用以標示橋下的航道右舷界線。 A main operated light was established at the north-eastern side of Stonecutters Bridge on 18-12-09 to mark the starboard limit of the navigable channel under the bridge.
3.	昂船洲橋東北白 Stonecutters Bridge N.E. White	一個以市電操作的新燈航標於 12 月 18 日在昂船洲大橋東北面設立，用以標示橋下的航道中部。 A main operated light was established at the north-eastern side of Stonecutters Bridge on 18-12-09 to mark the middle of the navigable channel under the bridge.
4.	昂船洲橋東北綠 Stonecutters Bridge N.E. Green	一個以市電操作的新燈航標於 12 月 18 日在昂船洲大橋東北面設立，用以標示橋下的航道左舷界線。 A main operated light was established at the north-eastern side of Stonecutters Bridge on 18-12-09 to mark the port limit of the navigable channel under the bridge.
5.	昂船洲橋西南綠 Stonecutters Bridge S.W. Green	一個以市電操作的新燈航標於 12 月 18 日在昂船洲大橋西南面設立，用以標示橋下的航道右舷界線。 A main operated light was established at the south-western side of Stonecutters Bridge on 18-12-09 to mark the starboard limit of the navigable channel under the bridge.
6.	昂船洲橋西南白 Stonecutters Bridge S.W. White	一個以市電操作的新燈航標於 12 月 18 日在昂船洲大橋西南面設立，用以標示橋下的航道中部。 A main operated light was established at the south-western side of Stonecutters Bridge on 18-12-09 to mark the middle of the navigable channel under the bridge.

附錄 F – 續
APPENDIX F – Cont'd

B. 本年新設的輔航裝置 (續)

NEW AIDS ESTABLISHED DURING THE YEAR (Cont'd)

7.	昂船洲橋西南紅 Stonecutters Bridge S.W. Red	一個以市電操作的新燈航標於 12 月 18 日在昂船洲大橋西南面設立，用以標示橋下的航道左舷界線。 A main operated light was established at the south-western side of Stonecutters Bridge on 18-12-09 to mark the port limit of the navigable channel under the bridge.
8.	中環 10 號碼頭 Central Pier 10	一個以太陽能操作的新燈航標於 11 月 20 日設立，用以標示中環 10 號碼頭。 A solar power operated light was established to mark the Central Pier 10 on 20-11-09.

C. 本年拆除的輔航裝置

AIDS DISCONTINUED DURING THE YEAR

1.	繫泊浮泡 A46 Mooring Buoy A46	這個燈浮於 12 月 8 日永久終止服務。 The lighted buoy was permanently withdrawn from service on 8-12-2009.
2.	繫泊浮泡 A76 Mooring Buoy A76	這個燈浮於 12 月 8 日永久終止服務。 The lighted buoy was permanently withdrawn from service on 8-12-2009.
3.	繫泊浮泡 A70 Mooring Buoy A70	這個燈浮於 12 月 9 日永久終止服務。 The lighted buoy was permanently withdrawn from service on 9-12-2009.
4.	繫泊浮泡 B31 Mooring Buoy B31	這個燈浮於 12 月 9 日永久終止服務。 The lighted buoy was permanently withdrawn from service on 9-12-2009.

D. 本年遭損毀的輔航裝置

AIDS DAMAGED DURING THE YEAR

下列燈浮標遭損毀，航標燈熄滅。

The lighted buoys listed below were damaged and unlit.

月份 Month	名稱	Name
1 月 January	繫泊浮泡 A17	Mooring Buoy A17
	北航 3	Northern 3
	機場 1	Airport 1
6 月 June	奇力西	Kellett West
7 月 July	一尺石	One Foot Rock
8 月 August	西檢	W Q
	青衣西	Tsing Yi West

附錄 F – 續
APPENDIX F – Cont'd

D. 本年遭損毀的輔航裝置 (續)
AIDS DAMAGED DURING THE YEAR (Cont'd)

下列燈浮標遭損毀，航標燈熄滅。
The lighted buoys listed below were damaged and unlit.

月份 Month	名稱	Name
9月 September	氣象 5	Weather 5
10月 October	北航 1	Northern 1
11月 November	沙田	Shatin
	北航 3	Northern 3
	青山 7	C P 7
12月 December	奇力北	Kellett North

E. 本年改進的輔航裝置
AIDS REPROVISIONED DURING THE YEAR

1. 下列燈航標已換上全新現代化器材，用以提高光達距離。
The lighted beacons listed below were upgraded with modern equipment for better luminous range.

月份 Month	名稱	Name
1月 January	龍山排	Lung Shan Pai
	屯門 1	Tuen Mun 1
2月 February	青荃橋南綠	Tsing Tsuen Bridge South Green
	青荃橋南紅	Tsing Tsuen Bridge South Red
3月 March	屯門 4	Tuen Mun 4
	青荃橋北綠	Tsing Tsuen Bridge North Green
	青荃橋北紅	Tsing Tsuen Bridge North Red
4月 April	牙鷹排	Nga Ying Pai
6月 June	大浪灣碼頭	Tai Long Wan Pier
8月 August	基準石	Datum Rock
9月 September	模達灣碼頭	Mo Tat Wan Pier
	模達灣新碼頭	Mo Tat Wan New Pier
11月 November	油柑頭碼頭	Yau Kam Tau Pier

附錄 F – 續
APPENDIX F – Cont'd

E. 本年改進的輔航裝置 (續)

AIDS REPROVISIONED DURING THE YEAR (Cont'd)

2. 下列燈航標已換上全新現代化器材，用以提高其可靠性。

The lighted beacons listed below were replaced with modern equipment for higher reliability.

月份 Month	名稱	Name
1 月 January	堅尼地城東	Kennedy Town Dolphin E
2 月 February	青衣橋北紅	Tsing Yi Bridge North Red
3 月 March	將軍澳 1	Tseung Kwan O 1
	長洲 1	Cheung Chau 1
	長洲 4	Cheung Chau 4
	長洲 6	Cheung Chau 6
5 月 May	北角	Pak Kok
	爛角咀發電廠	Black Point Power Station
6 月 June	大浪排	Tai Long Pai
	爛角咀	Black Point
7 月 July	政府船塢 1	G D 1
	政府船塢 2	G D 2
	龍鼓洲	Lung Kwu Chau
	將軍澳 3	Tseung Kwan O 3
8 月 August	谷埔碼頭	Kuk Po Pier
	鳳坑碼頭	Fung Hang Pier
10 月 October	鶴咀	Cape D'Aguilar
	大利橋南 8	Tai Lei Bridge South 8
11 月 November	大利橋北 1-12	Tai Lei Bridge North 1-12
	大利橋南 1-7	Tai Lei Bridge South 1-7
	大利橋南 9-12	Tai Lei Bridge South 9-12
12 月 December	稔灣	Nim Wan

附錄 F – 續
APPENDIX F – Cont'd

E. 本年改進的輔航裝置 (續)

AIDS REPROVISIONED DURING THE YEAR (Cont'd)

3. 下列燈航標已更換太陽能電池，用以提高航標的可靠性。

The solar batteries of the lighted beacons listed below were renewed in order to increase reliability.

月份 Month	名稱	Name
1 月 January	油柑頭碼頭	Yau Kam Tau Pier
2 月 February	鴨洲碼頭	Ap Chau Pier
3 月 March	土瓜灣 2	To Kwa Wan 2
4 月 April	基準石	Datum Rock
	北小鴉洲	North Siu A Chau
	深涌碼頭	Sham Chung Pier
5 月 May	下棚(交通燈)	Ha Pang (Traffic Light)
6 月 June	南交椅洲	South Kau Yi Chau
	前青衣渡輪碼頭東南面	Ex Tsing Yi Ferry Pier SE End
7 月 July	圓角	Yuen Kok
	沙橋頭碼頭	Sha Kiu Tau Pier
	北長洲石	Adamasta Rock
8 月 August	北交椅洲	North Kau Yi Chau
	石鼓洲碼頭	Shek Kwu Chau Pier
	鳳凰笏	Fung Wong Wat
9 月 September	海上救援西局 3	Sea Rescue West Station 3
10 月 October	大鴉洲	Tai A Chau
12 月 December	海上救援西局 4	Sea Rescue West Station 4
	南鯉魚門	South Lei Yue Mun
	白芒碼頭	Pak Mong Pier
	中港 3	C F T 3
	中港 4	C F T 4

附錄 F – 續
APPENDIX F – Cont'd

E. 本年改進的輔航裝置 (續)

AIDS REPROVISIONED DURING THE YEAR (Cont'd)

4. 下列燈航標的太陽能發電板數目已增加，用以提高航標的可靠性。
The numbers of solar panel of the lighted beacons listed below were increased to enhance reliability.

月份 Month	名稱	Name
3 月 March	南丫電力 1	P 1
	奇力北	Kellett North
	龍鼓 1	U R 1
4 月 April	土瓜灣 2	To Kwa Wan 2
6 月 June	大澳 1	Tai O 1
	大澳 2	Tai O 2
7 月 July	北長洲石	Adamasta Rock
8 月 August	佛堂門	Fat Tong Mun
9 月 September	赤角頭	Chek Kok Tau

附錄 F – 續
APPENDIX F – Cont'd

F. 輔航設備工場員工與輔航燈比例
RATIO OF STAFF OF AIDS TO NAVIGATION UNIT WORKSHOP TO AIDS

年份 Year	輔航設備工場員工 ⁽¹⁾ Staff of Aids to Navigation Unit Workshop ⁽¹⁾		輔航燈 Aids		比例 Ratio
		(%)		(%)	
1990	34	(+9.7)	319	(+3.9)	9.4
1991	34	(0)	326	(+2.2)	9.6
1992	34	(0)	327	(+0.3)	9.6
1993	40	(+17.6)	356	(+8.9)	8.9
1994	40	(0)	375	(+5.3)	9.4
1995	37	(-7.5)	379	(+1.1)	10.2
1996	36	(-2.7)	380	(+0.3)	10.6
1997	32	(-11.1)	395	(+3.9)	12.3
1998	29	(-9.4)	432	(+9.4)	14.9
1999	27	(-6.9)	463	(+7.2)	17.1
2000	27	(0)	468	(+1.1)	17.3
2001	25	(-7.4)	482	(+3.0)	19.3
2002	27	(+8.0)	483	(+0.2)	17.9
2003	27	(0)	497	(+2.9)	18.4
2004	27	(0)	509	(+2.4)	18.9
2005	25	(-7.4)	518	(+1.8)	20.7
2006	23	(-8.0)	529	(+2.1)	23.0
2007	23	(0)	533	(+0.8)	23.2
2008	24	(+4.3)	536	(+0.6)	22.3
2009	23	(-4.2)	540	(+0.7)	23.5

註釋： (1) 不包括負責在香港水域範圍內看管繫船設備/檢修浮泡的 4 位員工。

Note: (1) Excluding the four staff who are responsible for looking after the mooring facilities/overhaul of buoys within Hong Kong Waters.