

香港港口統計年報

2008

Port of Hong Kong  
Statistical Tables



中華人民共和國香港特別行政區海事處  
Marine Department

Hong Kong Special Administrative Region  
People's Republic of China

香 港 港 口  
PORT OF HONG KONG  
統 計 年 報  
STATISTICAL TABLES  
2008

有關本刊物的查詢，請聯絡：

海事處 策劃、發展協調及港口保安部 統計組

地址：中國香港中環統一碼頭道 38 號海港政府大樓 23 樓 2307 室

電話：(852) 2852 3660 圖文傳真：(852) 2542 4638

電子郵遞：st-sec@mardep.gov.hk

Enquiries about this publication can be directed to:

**Statistics Section**

**Planning, Development & Port Security Branch**

**Marine Department**

Address: Room 2307, 23/F, Harbour Building,

38 Pier Road, Central, Hong Kong, China.

Tel. No.: (852) 2852 3660 Fax. No.: (852) 2542 4638

E-mail: st-sec@mardep.gov.hk

政府海事處網頁

Home Page of the Marine Department

<http://www.mardep.gov.hk/>

同心協力，促進卓越海事服務

**We are One in Promoting Excellence in Marine Services**

## 目錄 CONTENTS

如欲進入統計表／附錄，請按下有關的藍色項目

To view the statistical tables/appendices, please click  
the item in blue

	頁數 Page No.
註釋 EXPLANATORY NOTES	iv - vii
摘要 SUMMARY	viii
第一部 - 港口活動 PART I - Port Activities	
<i>抵港/離港的船次</i> <i>Vessel Arrivals/Departures</i>	
表 1. 2008 年 按主要停泊地點分析抵港遠洋輪船的船次 TABLE 1. Ocean Vessel Arrivals by Main Berthing Location, 2008	1
表 2. 2008 年 按主要停泊地點分析離港遠洋輪船的船次 TABLE 2. Ocean Vessel Departures by Main Berthing Location, 2008	1
表 3. 2008 年 按船舶類型分析抵港船舶的船次 TABLE 3. Vessel Arrivals by Ship Type, 2008	2
表 4. 2008 年 按船旗分析抵港船舶的船次 TABLE 4. Vessel Arrivals by Flag, 2008	3 - 4
表 5. 2008 年 按船旗分析曾停靠香港的船舶數目和淨註冊噸位 TABLE 5. Number and NRT of Vessels Calling Hong Kong by Flag, 2008	5 - 6
表 6. 2008 年 按船舶類型分析離港船舶的平均在港停留時間 TABLE 6. Average Time in Port for Vessels Departing Hong Kong by Ship Type, 2008	7
表 7. 2008 年 靠泊貨櫃碼頭的遠洋輪船統計資料 TABLE 7. Statistics on Ocean Vessels Calling Container Terminals, 2008	8
表 8. 2008 年 按夏季吃水分析抵港遠洋輪船的船次 TABLE 8. Ocean Vessel Arrivals by Summer Draft, 2008	9
表 9. 2008 年 按船舶長度分析抵港遠洋輪船的船次 TABLE 9. Ocean Vessel Arrivals by Vessel Length, 2008	9
表 10. 2008 年 按主要來港原因分析抵港遠洋輪船的船次 TABLE 10. Ocean Vessel Arrivals by Main Reason of Call, 2008	10
表 11. 2008 年 跨境客運碼頭的抵港及離港航次統計資料 TABLE 11. Statistics on Vessel Arrivals and Departures at Cross-Boundary Ferry Terminals, 2008	11 - 12
表 12. 2008 年 按船舶類型分析香港過境船舶的船次 TABLE 12. Number of Vessel Trips Transit Hong Kong by Ship Type, 2008	13

客運量

*Passenger Throughput*

表 13 . 2008 年 按跨境客運碼頭分析客運量	
TABLE 13 . Passenger Throughput by Cross-Boundary Ferry Terminals, 2008	14
表 14 . 2008 年 按航線分析抵港及離港乘客人次	
TABLE 14 . Passenger Arrivals and Departures by Routes, 2008	15 - 16

貨櫃/貨物吞吐量

*Container/Cargo Throughput*

表 15 . 2008 年 按主要貨物裝卸地點分析貨櫃吞吐量	
TABLE 15 . Container Throughput by Main Cargo Handling Location, 2008	17
表 16 . 2008 年 按貨櫃碼頭以外的主要貨物裝卸地點分析裝卸的貨櫃	
TABLE 16 . Containers Discharged/Loaded at Main Cargo Handling Locations Other than Container Terminals, 2008	18
表 17 . 2008 年 按貨物種類及運輸方式劃分的裝卸港口貨物	
TABLE 17 . Port Cargo Discharged/Loaded by Cargo Type and Mode of Transport, 2008	19

第二部 - 港口服務及管理  
PART II - Port Services and Control

表 18 . 海港繫泊浮泡統計資料	
TABLE 18 . Harbour Mooring Buoys Statistics	20
表 19 . 2008 年 按分布地點分析香港私用繫泡數目	
TABLE 19 . Number of Private Moorings Laid in Hong Kong by Location, 2008	21 - 22
表 20 . 碇泊處一覽	
TABLE 20 . List of Anchorages	23 - 24
表 21 . 避風塘一覽	
TABLE 21 . List of Typhoon Shelters	25
表 22 . 公眾貨物裝卸區一覽	
TABLE 22 . List of Public Cargo Working Areas	26
表 23 . 垃圾收集、油污和檢控個案統計資料	
TABLE 23 . Refuse Collection, Oil Pollution and Prosecution Statistics	27
表 24 . 2008 年 底按噸位等級分析香港持牌船舶	
TABLE 24 . Hong Kong Licensed Vessels by Tonnage Classification, as at year end 2008	28 - 29

	頁數 Page No.
第三部 - 船舶服務 PART III - Shipping Services	
表 25 . 船舶安全監督統計資料 TABLE 25 . Ship Safety Statistics	30 - 32
表 26 . 本地船隻安全統計資料 TABLE 26 . Local Vessels Safety Statistics	33 - 38
表 27 . 海員發證、註冊和僱用統計資料 TABLE 27 . Seafarers' Certification, Registration and Employment Statistics	39 - 44
表 28 . 香港註冊船舶統計資料 TABLE 28 . Statistics on Ships Registered in Hong Kong	45 - 46
表 29 . 政府船隊統計資料 TABLE 29 . Government Fleet Statistics	47
表 30 . 政府船舶所屬部門及可用率情況 (2008 年 12 月 31 日) TABLE 30 . Departmental Ownership and Availabilities of Government Vessels (as at 31 December 2008)	48
第四部 - 附錄 PART IV - Appendices	
A . 海事處組織架構圖 Marine Department Organization Chart	A1
B . 海事處的編制和實際員額 (截至 2008 年 12 月 31 日) Marine Department Establishment and Strength (as at 31 December 2008)	A2 - A5
C . 2008 年 海事處訓練組舉辦的課程 Training Courses Conducted by Training Section, Marine Department in 2008	A6 - A7
D . 2008 年 海事處訪客 Visitors of the Marine Department, 2008	A8 – A12
E . 2008 年 新訂海事法例 New Maritime Legislation, 2008	A13
F . 2008 年 輔航設備 Aids to Navigation, 2008	A14 – A19

### 1. 簡介

《香港港口統計年報》是香港海事處編制的港口及海事統計資料一覽表。

這本年報輯錄以下統計數字和資料：-

- 抵港/離港的船次
- 客運量
- 貨櫃/貨物吞吐量
- 港口服務及管理
- 船舶服務
- 海事處組織架構圖  
(編制和實際員額)
- 海事處舉辦的課程
- 海事處訪客
- 新訂海事法例
- 輔航設備

### 2. 資料來源

#### *船舶進出口統計*

船舶進出口統計資料乃根據船公司或代理人向海事處申報船舶抵達/離開港口的資料時所遞交的申報表(MO 618 及 MO 618A)編製而成。(摘要、表一至十)

#### *貨櫃統計資料*

在貨櫃碼頭裝運的貨櫃統計資料，主要由碼頭經營者提供。不在貨櫃碼頭裝運的遠洋輪船「空」貨櫃統計資料，由海事處根據申報表 MO 618 及 MO 618A 編製。所有其他詳細的貨櫃統計資料，皆由政府統計處根據貨物艙單抽樣編製而成。(摘要、表十五至十七)

#### *停泊/貨物裝卸地點*

有關遠洋輪船的主要貨物裝卸區和主要停泊地點的資料，均取自海事處船舶交通管理系統所保存的船舶活動報告。(表一至二、表七、表十五至十七)

### 1. Introduction

The *Port of Hong Kong Statistical Tables* is a collection of Hong Kong Port and Maritime Statistics compiled by the Marine Department.

The publication brings together the following statistics and information: -

- Vessels Arrivals/Departures
- Passenger Throughput
- Container/Cargo Throughput
- Port Services and Control
- Shipping Services
- Marine Department Organization Chart  
(Establishment and Strength)
- Training Courses Conducted by Marine Department
- Visitors to Marine Department
- New Maritime Legislation
- Aids to Navigation

### 2. Data Sources

#### *Vessel Statistics*

Vessel statistics are based on the declaration forms (MO 618 & MO 618A) submitted to Marine Department by shipping companies/agents for declaring arrivals/departures of vessels under their charge. (**Summary Table, Tables 1 – 10**)

#### *Container Statistics*

Statistics on container throughput handled at Container Terminals are mainly obtained from the terminal operators. Statistics on empty containers (ocean) handled at locations other than Container Terminals are compiled by Marine Department based on the declaration forms of MO 618 and MO 618A. As for all the other detailed container throughput statistics, they are compiled by Census and Statistics Department based on sampling of data in cargo manifests. (**Summary Table, Tables 15 – 17**)

#### *Berthing/Cargo Handling Location*

Information on the main cargo handling location and main berthing location in respect of ocean vessels are extracted from the trip activity report kept in the Marine Department's Vessel Traffic Management System. (**Tables 1 – 2, 7, 15 – 17**)

### 3. 用語及分類

#### 容量

在本報告中，船舶的容量是以淨註冊噸位(計算單位為淨註冊噸)來表示。淨註冊噸位是由一艘船的船殼內的容量(以立方呎計)，加上在甲板上用以裝載貨物、貯藏品及乘客的空間，再減去船長、高級船員、船員所住的地方、燃料、導航及推進器所佔用的地方。每一淨註冊噸相等於一百立方呎的容量。

#### 貨物裝卸地點

在本報告中，貨物裝卸地點的分類是「貨櫃碼頭」、「泊位和倉庫碼頭(包括公眾貨物裝卸區)」、「碇泊處」和「浮泡」。

#### 貨櫃吞吐量

這是指以標準貨櫃單位計算的貨櫃搬運數目。一個標準貨櫃單位等同一個二十呎貨櫃的容量。

#### 船旗

這是指船舶的國籍，表明其正式註冊的地方。香港在一九九二年正式開始船舶註冊制度。一九九七年七月一日起，香港特別行政區經中央人民政府授權繼續進行船舶註冊，並根據香港特別行政區的法律以「中國香港」的名義頒發有關證件。

#### 內河航限

內河航限是指香港鄰近水域，一般指香港與珠江、大鵬灣及澳門，及其他在廣東和廣西與香港鄰近水域相連的內陸水域。內河航限的精確定義是指以下範圍內的水域：

- 東至東經 114°30'；
- 南至北緯 22°09'；及
- 西至東經 113°31'。

#### 船舶類型

這是指船舶的特定用途，分為十八類：化學品運載船、普通貨船、散裝乾貨船、漁船/魚類加工船、全槽格式貨櫃船、液化氣體運載船、躉船/駁船/貨艇、礦沙/散貨/油類混用船、油輪、客輪(郵船)、客輪(定期)、遊樂船舶、滾裝卸式船、半貨櫃船、拖船、其他貨船、其他液體船及其他。

### 3. Terms and Classifications

#### Capacity

In this report, the capacity of a vessel is expressed in terms of net registered tonnage (the unit of measurement is net registered ton, NRT). Net registered tonnage (NRT) is, broadly, the capacity of a ship in cubic feet of the space within the hull, and of the enclosed space above the deck available for cargo, stores and passengers but excluding space used for the accommodation of the master, officers, crew, fuel, navigation and propelling machinery. One net registered ton is equivalent to 100 cubic feet of capacity.

#### Cargo Handling Location

The types of cargo handling location shown in this report are “container terminals”, “berths and wharves (including public cargo working areas)”, “anchorage” and “buoys”.

#### Container Throughput

This refers to the number of movement of cargo containers in TEU terms. A TEU stands for a twenty-foot equivalent unit.

#### Flag

This is the nationality of the vessel, indicating where she is officially registered. In Hong Kong, the official vessel registration system was set up in 1992. As from 1.7.1997, the Hong Kong Special Administrative Region is authorized by the Central People's Government to continue to maintain a shipping register and issue related certificates under its legislation, using the name 'Hong Kong, China'.

#### River Trade Limits

River trade limits mean the waters in the vicinity of Hong Kong, which broadly include the Pearl River, Mirs Bay and Macao, and other inland waters in Guangdong and Guangxi which are accessible from waters in the vicinity of Hong Kong. The precise definition of River Trade Limits refer to waters within the following boundaries:

- to the East, meridian 114°30' East;
- to the South, parallel 22°09' North; and
- to the West, meridian 113°31' East.

#### Ship Type

This refers to the known specific function of the ship. Eighteen types of ship are distinguished: chemical carrier/tanker, conventional cargo vessel, dry bulk carrier, fishing/fish processing vessel, fully cellular container vessel, gas carrier/tanker, lighter/barge/cargo junk, ore/bulk/oil carrier, oil tanker, passenger vessel (cruising), passenger vessel (schedule), pleasure vessel, roll on/roll off, semi-container vessel, tug, other cargo vessel, other fluid carrier and others.

## 4. 資料定義

### 內河船隻

根據《船舶及港口管制條例》(第 313 章)所訂，內河船隻是指進出香港與內河航限內的港口之間的船舶。(摘要、表三至六和十一)

### 停泊地點

船舶在進入香港水域後可能停泊超過一個停泊地點。若船舶來港的主要原因是裝卸貨物，則主要的貨物裝卸地點和主要的停泊地點是指最為昂貴的地點，當中以貨櫃碼頭居首位，隨後是泊位和倉庫碼頭(包括公眾貨物裝卸區)、碇泊處和浮泡。若船舶來港的主要原因不是裝卸貨物，主要停泊地點為停留時間最長的地點。(表一至二、表七、表十五和十六)

### 內河客船

內河客船的抵港次數是指船舶停泊於港澳客運碼頭、中國客運碼頭、屯門客運碼頭和海天客運碼頭的次數。(摘要、表三至五和十一)

停泊於這四個碼頭的船次與實際的抵港船次會有輕微偏差，因為船舶可能在同一次航程中停泊超過一個客運碼頭。

## 5. 資料限制

遠洋客船數字包括在內河航限以外水域行駛的遊樂船舶。但是，由於有些船主/代理人沒有申報這些船舶的淨註冊噸位資料給海事處，故遠洋客船的淨註冊噸位數字可能輕微低於實際的數字。(摘要、表一至五)

由於不能準確地統計本地持牌遊樂船舶和漁船來往香港及內河航限內的船次，故這兩類船舶沒有包括在內河船隻統計範圍內。(摘要、表三至六)

## 6. 計量單位

DWT = 載重(噸)  
GRT = 總註冊噸位  
LOA = 船總長度  
NRT = 淨註冊單位  
TEU = 二十呎標準貨櫃單位

## 4. Data Definitions

### River Vessels

In accordance with the Shipping and Port Control Ordinance, Cap. 313, Laws of Hong Kong, river vessels refer to those travelling between Hong Kong and ports that are within the river trade limits. (Summary Table, Tables 3 – 6 and 11)

### Berthing Locations

A vessel may berth at more than one locations after entering into Hong Kong waters. If the main reason of call of the vessel is for loading/discharging cargo, both the main cargo handling location and the main berthing location refer to the most costly location, with Container Terminals ranked first, followed by Berths and Wharves (including Public Cargo Working Areas), Anchorages and Buoys. If the main reason of call is not for loading/discharging cargo, the main berthing location refers to the one with the longest stay. (Tables 1 – 2, 7, 15 and 16)

### River Passenger Vessels

The figures on arrivals of river passenger vessels refer to the number of berthings at the Macau Ferry Terminal, the China Ferry Terminal, the Tuen Mun Ferry Terminal and the SkyPier. (Summary Table, Tables 3 – 5 and 11)

The number of berthings at these 4 terminals are slightly different from the actual number of arrivals because a ship may berth at more than one terminal in a single trip.

## 5. Data Limitations

The number of ocean passenger vessels includes pleasure vessels plying beyond the river trade limits. However, as some of their owners/agents do not report NRT information to Marine Department, the total NRT for ocean passenger vessels may be slightly under-reported. (Summary Table, Tables 1 – 5)

As accurate number of trips of locally licensed pleasure vessels and fishing vessels plying between Hong Kong and the river trade limits is not available, these two categories of vessels are not included in the river vessel statistics. (Summary Table, Tables 3 – 6)

## 6. Units of Measurement

DWT = Deadweight [Tonnage]  
GRT = Gross Registered Tonnage  
LOA = Length Overall  
NRT = Net Registered Tonnage  
TEU = Twenty-foot Equivalent Unit



## 7. 數字的捨入

船舶統計數字計算至最接近的十位，淨註冊噸位、貨物和貨櫃吞吐量是計算至最接近的千位，而客運統計數字計算至最接近的百位。

項目	單位
船舶數目	十位
貨物吞吐量	千公噸
貨櫃吞吐量	千個標準貨櫃單位
淨註冊單位	千噸
客運數目	百位

由於進位關係，本報告中所列的個別數字之和可能不等於其總數。但變動百分率和比重百分率則以未經進位的數字計出。

## 8. 代號

- ( ) 與去年同期比較的變動百分率
- ※ 多於 1000%
- 0 少於 0.05%
- ^ 少於 5 船次；少於 5 船舶
- † 少於 500 個標準貨櫃單位；  
少於 500 人次；  
少於 500 噸
- # 臨時數字
- \* 修訂數字
- { } 年底時的估計數字
- N.A. 沒有數字
- 不適用

策劃、發展協調及港口保安部  
統計組

二零零九年五月

## 7. Rounding of Figures

Statistics on the number of vessel are rounded to the nearest ten, those on net register tonnage, cargo and container throughput are rounded to the nearest thousand and those on passenger statistics are rounded to nearest hundred.

Items	Units
No. of Vessels	ten units
Cargo Throughput	'000 tonnes
Container Throughput	'000 TEUs
NRT	'000 tons
Passenger Statistics	hundred units

Figures shown in this report may not add up to the respective totals due to rounding. However, percentage changes and percentage shares are calculated from unrounded figures.

## 8. Symbols

- ( ) % changes over the same period of preceding year
- ※ More than 1000%
- 0 Less than 0.05%
- ^ Less than 5 trips; Less than 5 ships
- † Less than 500 TEUs;  
Less than 500 passengers;  
Less than 500 tonnes
- # Provisional figures
- \* Revised figures
- { } Estimates as at year end
- N.A. Not available
- Not applicable

Statistics Section  
Planning, Development & Port Security Branch

May 2009

**摘要**  
**SUMMARY**

**2003 至 2008 年主要港口統計數字及每年增長率**  
**Principal Port Statistics for 2003 – 2008 and Annual Growth Rates**

項目 Item	2003	2007	2008	每年增長率 Annual Growth Rates	
				2007-2008	2003-2008 <sup>(1)</sup>
1. 抵港船次 Number of Vessel Arrivals	218 050	225 990	217 360	-3.8%	-0.1%
(a) 遠洋輪船 Ocean Vessel	35 790	37 150	35 850	-3.5%	0%
貨船 Cargo Vessel	32 780	33 460	32 850	-1.8%	0%
客船 Passenger Vessel	3 010	3 690	3 000	-18.7%	0%
(b) 內河船隻 River Vessel	182 270	188 840	181 510	-3.9%	-0.1%
貨船 Cargo Vessel	119 480	108 950	100 610	-7.6%	-3.4%
客船 <sup>(2)</sup> Passenger Vessel <sup>(2)</sup>	62 790	79 890	80 900	+1.3%	+5.2%
2. 抵港船舶的淨註冊噸位(千噸) N.R.T. of Vessel Arrivals ('000 tons)	386 224	474 921	483 064	+1.7%	+4.6%
(a) 遠洋輪船 Ocean Vessel	300 514	372 488	385 426	+3.5%	+5.1%
(b) 內河船隻 <sup>(2)</sup> River Vessel <sup>(2)</sup>	85 710	102 433	97 638	-4.7%	+2.6%
3. 貨櫃吞吐量(千個標準貨櫃單位) Container Throughput ('000 TEUs)	20 449	23 998	24 494	+2.1%	+3.7%
(i) 按停泊地點分析 By Berthing Location					
貨櫃碼頭 Container Terminals	12 070	17 322	17 726	+2.3%	+8.0%
貨櫃碼頭以外 Other than Container Terminals	8 379	6 677	6 769	+1.4%	-4.2%
(ii) 按運輸方式分析 By Mode of Transport					
遠洋 Ocean	14 530	16 913	17 075	+1.0%	+3.3%
內河 River	5 919	7 085	7 419	+4.7%	+4.6%
4. 貨物吞吐量(千公噸) Cargo Throughput ('000 tonnes)	207 612	245 433	259 402	+5.7%	+4.6%
(a) 海運 Seaborne	148 618	177 347	179 974	+1.5%	+3.9%
(b) 河運 River	58 994	68 086	79 428	+16.7%	+6.1%
5. 港澳客運碼頭、中國客運碼頭及屯門客運碼頭的渡輪客運量 Total Passenger Throughput for the Ferry Berthing at MFT, CFT and TMFT	16 524 200	23 877 000	24 195 200	+1.3%	+7.9%
(a) 澳門 Macau	10 272 600	16 839 600	18 571 600	+10.3%	+12.6%
(b) 中國內地 Mainland China	6 037 000	6 719 000	5 310 000	-21.0%	-2.5%
(c) 其他 Others	214 500	318 400	313 500	-1.5%	+7.9%

註釋： (1) 複合平均增長率  
Note: (1) Average annual compound growth rate

(2) 由二零零七年開始，數字不包括非載客的跨境渡輪船次。  
(2) As from 2007, non-passenger carrying trips of cross boundary ferry are excluded.

統計表  
Statistical  
Tables

表 1  
TABLE 1

2008 年按主要停泊地點分析抵港遠洋輪船的船次  
Ocean Vessel Arrivals by Main Berthing Location, 2008

主要停泊地點 Main Berthing Location	主要船舶類別 Main Vessel Category								總計 Total			
	貨船 Cargo Vessels				客船 Passenger Vessels							
	抵港船次 No. of Vessel Arrivals		淨註冊噸位 (千噸) NRT ('000)		抵港船次 No. of Vessel Arrivals		淨註冊噸位 (千噸) NRT ('000)		抵港船次 No. of Vessel Arrivals		淨註冊噸位 (千噸) NRT ('000)	
	%		%		%		%		%		%	
貨櫃碼頭 Container Terminals	13 360	(+0.2)	261 630	(+4.9)	^	(-33.3)	180	(-63.5)	13 360	(+0.2)	261 810	(+4.8)
泊位和倉庫碼頭 Berths and Wharves	4 670	(-15.9)	16 915	(-15.6)	1 350	(-23.0)	21 642	(-2.3)	6 020	(-17.6)	38 557	(-8.6)
碇泊處 Anchorages	14 490	(+3.1)	73 884	(+10.3)	110	(+90.0)	652	(※)	14 600	(+3.5)	74 536	(+11.2)
浮泡 Buoys	340	(-36.8)	1 378	(-42.9)	1 530	(-18.1)	9 144	(-17.4)	1 870	(-22.3)	10 523	(-22.0)
<b>總計 Total</b>	<b>32 850</b>	<b>(-1.8)</b>	<b>353 807</b>	<b>(+4.4)</b>	<b>3 000</b>	<b>(-18.7)</b>	<b>31 618</b>	<b>(-6.3)</b>	<b>35 850</b>	<b>(-3.5)</b>	<b>385 426</b>	<b>(+3.5)</b>

表 2  
TABLE 2

2008 年按主要停泊地點分析離港遠洋輪船的船次  
Ocean Vessel Departures by Main Berthing Location, 2008

主要停泊地點 Main Berthing Location	主要船舶類別 Main Vessel Category								總計 Total			
	貨船 Cargo Vessels				客船 Passenger Vessels							
	離港船次 No. of Vessel Departures		淨註冊噸位 (千噸) NRT ('000)		離港船次 No. of Vessel Departures		淨註冊噸位 (千噸) NRT ('000)		離港船次 No. of Vessel Departures		淨註冊噸位 (千噸) NRT ('000)	
	%		%		%		%		%		%	
貨櫃碼頭 Container Terminals	13 500	(-0.3)	269 408	(+4.7)	^	(-33.3)	180	(-63.5)	13 500	(-0.4)	269 588	(+4.6)
泊位和倉庫碼頭 Berths and Wharves	4 790	(-27.4)	13 883	(-16.9)	1 360	(-23.4)	21 882	(-2.0)	6 150	(-26.6)	35 704	(-8.4)
碇泊處 Anchorages	14 310	(+10.8)	66 108	(+9.5)	170	(+102.4)	652	(※)	14 480	(+11.4)	66 760	(+10.6)
浮泡 Buoys	290	(-38.6)	1 247	(-45.2)	1 540	(-17.6)	9 228	(-16.8)	1 830	(-21.8)	10 475	(-21.6)
<b>總計 Total</b>	<b>32 890</b>	<b>(-1.9)</b>	<b>350 646</b>	<b>(+4.2)</b>	<b>3 080</b>	<b>(-17.6)</b>	<b>31 882</b>	<b>(-5.9)</b>	<b>35 970</b>	<b>(-3.5)</b>	<b>382 528</b>	<b>(+3.3)</b>

^ 少於 5 船次  
^ Less than 5 trips

※ 多於 1000%  
※ More than 1000%

表3  
TABLE 3

2008年按船舶類型分析抵港船舶的船次  
Vessel Arrivals by Ship Type, 2008

船舶類型 Ship Type	遠洋輪船 Ocean Vessels		內河船隻 River Vessels		總計 Total	
	抵港船次 No. of Vessel Arrivals	比重 百分率 Percentage Share	抵港船次 No. of Vessel Arrivals	比重 百分率 Percentage Share	抵港船次 No. of Vessel Arrivals	比重 百分率 Percentage Share
	(%)		(%)		(%)	
運車船 Car Carrier	20 (+17.6)	0%	^ (+300.0)	0%	20 (+33.3)	0%
化學品運載船 Chemical Carrier/Tanker	430 (-4.6)	1.2%	210 (-15.1)	0.1%	640 (-8.4)	0.3%
普通貨船 Conventional Cargo Vessel	5 150 (+10.5)	14.4%	13 580 (-15.2)	7.5%	18 730 (-9.4)	8.6%
其他貨船 Other Cargo Vessel	0 (0)	0%	220 (-7.3)	0.1%	220 (-7.3)	0.1%
郵船/渡輪 Cruise/Ferry	2 900 (-18.7)	8.1%	80 900 (+1.3)	44.6%	83 790 (+0.4)	38.5%
散裝乾貨船 Dry Bulk Carrier	1 240 (-9.3)	3.4%	1 500 (+14.6)	0.8%	2 730 (+2.4)	1.3%
漁船/魚類加工船 Fishing/Fish Processing Vessel	330 (-35.0)	0.9%	-	-	330 (-35.0)	0.2%
全槽格式貨櫃船 Fully Cellular Container Vessel	22 730 (-3.6)	63.4%	65 900 (-7.0)	36.3%	88 620 (-6.2)	40.8%
液化氣體運載船 Gas Carrier/Tanker	370 (+9.4)	1.0%	20 (-53.1)	0%	390 (+4.0)	0.2%
駁船/躉船/貨艇 Lighter/Barge/Cargo Junk	130 (-17.1)	0.4%	9 510 (-7.0)	5.2%	9 630 (-7.2)	4.4%
礦沙散貨油類混用船 OBO (Ore, Bulk, Oil) Carrier	^ (-66.7)	0%	^ (-60.0)	0%	^ (-62.5)	0%
油輪 Oil Tanker	1 390 (-0.9)	3.9%	1 120 (+3.0)	0.6%	2 510 (+0.8)	1.2%
其他液體運載船 Other Fluid Carrier	0 (0)	0%	^ (-88.9)	0%	^ (-88.9)	0%
遊樂船舶 Pleasure Vessel	100 (-18.1)	0.3%	-	-	100 (-18.1)	0%
滾裝卸式船 Roll On/Roll Off	540 (+21.8)	1.5%	10 (+100.0)	0%	550 (+22.9)	0.3%
半貨櫃船 Semi-container Vessel	150 (-21.6)	0.4%	1 590 (+65.7)	0.9%	1 740 (+51.3)	0.8%
拖船 Tug	230 (-7.2)	0.6%	6 600 (-12.9)	3.6%	6 830 (-12.7)	3.1%
其他 Others	150 (+29.3)	0.4%	380 (-0.3)	0.2%	530 (+6.7)	0.2%
<b>總計 Total</b>	<b>35 850 (-3.5)</b>	<b>100.0%</b>	<b>181 510 (-3.9)</b>	<b>100.0%</b>	<b>217 360 (-3.8)</b>	<b>100.0%</b>

^ 少於5船次  
^ Less than 5 trips

表 4  
TABLE 4

2008 年按船旗分析抵港船舶的船次  
Vessel Arrivals by Flag, 2008

船旗 Flag	遠洋輪船 Ocean Vessels				內河船隻 River Vessels				總計 Total			
	抵港船次 No. of Vessel Arrivals		淨註冊噸位 (千噸位) NRT ('000)		抵港船次 No. of Vessel Arrivals		淨註冊噸位 (千噸位) NRT ('000)		抵港船次 No. of Vessel Arrivals		淨註冊噸位 (千噸位) NRT ('000)	
	(%)	(%)	(%)	(%)	(%)	(%)	(%)	(%)	(%)	(%)		
安提瓜和巴布達 Antigua and Barbuda	860	(-6.6)	8 348	(+12.7)	50	(-24.6)	630	(+19.5)	900	(-7.7)	8 978	(+13.2)
巴哈馬 Bahamas	1 440	(-13.5)	16 511	(-1.0)	40	(+10.3)	1 205	(+25.8)	1 480	(-13.0)	17 715	(+0.5)
伯利茲 Belize	140	(-49.3)	159	(-51.7)	20	(-62.5)	18	(-61.9)	150	(-51.0)	177	(-53.0)
柬埔寨 Cambodia	230	(+35.9)	476	(+28.7)	30	(-30.0)	80	(-19.2)	260	(+23.2)	556	(+18.6)
中國內地 Mainland China	7 020	(-10.8)	13 191	(-5.8)	115 370	(-9.9)	52 222	(-2.8)	122 390	(-10.0)	65 413	(-3.4)
賽浦路斯 Cyprus	580	(-6.9)	8 153	(+11.3)	40	(-18.6)	854	(-6.0)	620	(-7.7)	9 007	(+9.4)
丹麥 Denmark	270	(+16.2)	13 033	(+15.9)	20	(+66.7)	679	(+60.3)	290	(+18.7)	13 713	(+17.5)
法國 France	120	(-5.7)	4 808	(-7.1)	40	(+60.0)	1 584	(+59.5)	160	(+5.4)	6 391	(+3.6)
德國 Germany	970	(+2.4)	27 328	(+11.4)	40	(-7.7)	942	(+5.3)	1 010	(+2.0)	28 271	(+11.2)
希臘 Greece	190	(-3.0)	6 129	(+15.2)	10	(0)	240	(-3.8)	200	(-2.9)	6 369	(+14.3)
香港 Hong Kong	2 510	(+7.0)	32 209	(+16.3)	64 130	(+10.1)	22 398	(+1.7)	66 640	(+10.0)	54 607	(+9.8)
印度 India	50	(-26.9)	690	(-16.9)	10	(-22.2)	108	(-28.8)	60	(-26.3)	798	(-18.7)
意大利 Italy	150	(+9.3)	3 246	(+27.4)	^	(-50.0)	61	(-50.3)	160	(+6.8)	3 307	(+23.8)
日本 Japan	80	(+58.8)	1 809	(+123.1)	^	(-50.0)	22	(-48.3)	80	(+54.7)	1 831	(+114.5)
南韓 Republic of Korea	900	(-14.0)	5 234	(-18.1)	170	(-3.3)	462	(-4.5)	1 080	(-12.5)	5 696	(-17.1)
利比里亞 Liberia	3 330	(+7.7)	58 888	(+1.6)	200	(-14.0)	3 717	(-18.9)	3 540	(+6.2)	62 604	(+0.1)
馬來西亞 Malaysia	220	(-30.2)	2 199	(-8.4)	20	(+4.5)	183	(-12.0)	240	(-27.9)	2 382	(-8.7)

表 4 – 續  
TABLE 4 – Cont'd

船旗 Flag	遠洋輪船 Ocean Vessels		內河船隻 River Vessels		總計 Total	
	抵港船次 No. of Vessel Arrivals	淨註冊噸位 (千噸位) NRT ('000)	抵港船次 No. of Vessel Arrivals	淨註冊噸位 (千噸位) NRT ('000)	抵港船次 No. of Vessel Arrivals	淨註冊噸位 (千噸位) NRT ('000)
	(%)	(%)	(%)	(%)	(%)	(%)
馬耳他 Malta	230 (+28.5)	2 843 (+19.5)	20 (+66.7)	246 (+82.1)	250 (+30.9)	3 090 (+22.9)
荷蘭 Netherlands	140 (-19.2)	2 529 (-32.2)	10 (+16.7)	138 (+47.0)	150 (-18.0)	2 666 (-30.3)
巴拿馬 Panama	8 810 (-7.0)	112 425 (+4.7)	950 (-26.6)	8 049 (-27.6)	9 750 (-9.3)	120 474 (+1.7)
塞拉利昂 Sierra Leone	140 (+430.8)	47 (+95.4)	10 (-16.7)	11 (-0.6)	140 (+346.9)	58 (+65.0)
新加坡 Singapore	2 170 (-0.4)	24 894 (+11.1)	120 (+21.4)	1 184 (+79.2)	2 290 (+0.5)	26 078 (+13.1)
聖文森特和 格林納丁斯 St. Vincent and the Grenadines	150 (-40.4)	981 (-46.4)	20 (-71.6)	165 (-71.7)	170 (-47.0)	1 146 (-52.5)
台灣 Taiwan	2 590 (+43.6)	2 820 (+0.6)	0 (-)	0 (-)	2 590 (+43.6)	2 820 (+0.6)
泰國 Thailand	170 (-24.0)	873 (-11.8)	^ (-20.0)	11 (-40.1)	180 (-23.9)	884 (-12.4)
圖瓦盧 Tuvalu	100 (-42.5)	182 (-6.8)	20 (-27.6)	95 (+159.7)	120 (-40.3)	278 (+19.5)
英國 United Kingdom	770 (+5.9)	18 640 (+5.3)	30 (-39.3)	790 (-43.8)	810 (+2.7)	19 430 (+1.7)
美國 USA	60 (-57.7)	846 (-74.4)	^ (-88.9)	14 (-90.6)	60 (-59.6)	860 (-75.1)
馬紹爾群島 Marshall Islands	770 (-24.1)	8 093 (-19.0)	40 (-22.8)	555 (-17.9)	810 (-24.0)	8 648 (-19.0)
越南 Vietnam	210 (+36.3)	729 (+17.6)	10 (-28.6)	72 (-17.8)	220 (+31.0)	801 (+13.2)
其他 <sup>(1)</sup> Others <sup>(1)</sup>	510 (+32.6)	7 114 (+72.5)	100 (+27.6)	904 (+44.2)	610 (+31.8)	8 017 (+68.8)
<b>總計 Total</b>	<b>35 850 (-3.5)</b>	<b>385 426 (+3.5)</b>	<b>181 510 (-3.9)</b>	<b>97 638 (-4.7)</b>	<b>217 360 (-3.8)</b>	<b>483 064 (+1.7)</b>

^ 少於 5 船次  
^ Less than 5 trips

註釋： (1) 包括所有在二零零八年抵港船次總數少於五十船次的旗號。  
Note: (1) Including those flags of which their total number of vessel arrivals were less than 50 in 2008.

表 5  
TABLE 5

2008 年按船旗分析曾停靠香港的船舶數目和淨註冊噸位  
Number and NRT of Vessels Calling Hong Kong by Flag, 2008

船旗 Flag	遠洋輪船 Ocean Vessels				內河船隻 River Vessels			
	船舶數目 Number of Vessels		淨註冊噸位 (千噸) NRT ('000)		船舶數目 Number of Vessels		淨註冊噸位 (千噸) NRT ('000)	
	(%)		(%)		(%)		(%)	
安提瓜和巴布達 Antigua and Barbuda	130	(+11.0)	1 301	(+22.9)	30	(+17.2)	412	(+32.7)
巴哈馬 Bahamas	130	(-3.0)	2 514	(+11.2)	20	(-17.4)	429	(-0.6)
伯利茲 Belize	40	(-39.3)	51	(-38.8)	10	(-66.7)	10	(-57.7)
柬埔寨 Cambodia	80	(+28.8)	176	(+25.9)	20	(-22.7)	47	(-12.1)
中國內地 Mainland China	400	(-15.7)	2 609	(-2.5)	1 380	(-10.5)	1 663	(-11.7)
塞浦路斯 Cyprus	110	(+9.6)	2 031	(+42.1)	20	(-14.3)	559	(+33.6)
丹麥 Denmark	60	(+37.8)	2 498	(+26.9)	20	(+80.0)	576	(+77.5)
法國 France	20	( 0)	845	(-0.2)	10	(+10.0)	426	(+4.8)
德國 Germany	160	(+8.1)	4 322	(+13.5)	30	(-19.4)	627	(-16.8)
希臘 Greece	50	(-2.1)	1 314	(+1.1)	10	(-9.1)	225	(-9.8)
香港 Hong Kong	450	(+20.8)	5 982	(+43.5)	670	(-1.0)	2 351	(+13.8)
印度 India	20	(+15.0)	426	(+12.7)	10	(-25.0)	95	(-30.0)
意大利 Italy	30	(-22.9)	577	(-11.7)	^	(-60.0)	46	(-57.4)
日本 Japan	20	(-21.1)	227	(+25.8)	^	(-50.0)	22	(-48.3)
南韓 Republic of Korea	160	(-2.4)	910	(+17.3)	50	(-3.6)	240	(+14.9)
利比里亞 Liberia	530	(+14.0)	10 783	(+13.8)	110	(-16.5)	2 018	(-23.0)
馬來西亞 Malaysia	50	(-3.7)	688	(+1.4)	20	(+12.5)	109	(+5.0)
馬耳他 Malta	70	(+18.3)	1 173	(+24.2)	20	(+66.7)	246	(+82.1)



表 5 – 續  
TABLE 5 – Cont'd

船旗 Flag	遠洋輪船 Ocean Vessels				內河船隻 River Vessels			
	船舶數目 Number of Vessels		淨註冊噸位 (千噸) NRT ('000)		船舶數目 Number of Vessels		淨註冊噸位 (千噸) NRT ('000)	
	(% )		(% )		(% )		(% )	
荷蘭 Netherlands	40	(+21.2)	834	(+40.0)	10	(+75.0)	138	(+64.7)
挪威 Norway	20	(-23.1)	318	(-23.9)	^	(-55.6)	40	(-67.9)
巴拿馬 Panama	1290	(+7.8)	17 859	(+19.1)	340	(-14.1)	3 989	(-14.8)
菲律賓 Philippines	20	(+15.8)	248	(-11.5)	^	(-66.7)	52	(-65.0)
新加坡 Singapore	350	(+16.4)	4 752	(+18.7)	80	(+9.3)	920	(+69.8)
聖文森特和 格林納丁斯 St. Vincent and the Grenadines	60	(-5.1)	423	(-2.0)	20	(+50.0)	161	(+62.8)
台灣 Taiwan	120	(-27.0)	174	(-16.7)	0	(-)	0	(-)
泰國 Thailand	40	(+12.9)	150	(+22.8)	^	(-40.0)	8	(-53.8)
圖瓦盧 Tuvalu	40	(-7.7)	92	(+24.9)	20	(+13.3)	89	(+397.9)
英國 United Kingdom	150	(-3.8)	3 720	(+3.6)	30	(-37.8)	625	(-41.2)
馬紹爾群島 Marshall Islands	150	(-4.6)	2 190	(-8.6)	40	(+15.6)	430	(+13.4)
越南 Vietnam	40	(+2.5)	201	(+23.3)	^	(-50.0)	14	(-34.6)
其他 <sup>(1)</sup> Others <sup>(1)</sup>	200	(+39.3)	2 256	(+66.5)	60	(+9.8)	545	(-2.3)
<b>總計 Total</b>	<b>5 020</b>	<b>(+4.7)</b>	<b>71 642</b>	<b>(+15.8)</b>	<b>3 020</b>	<b>(-8.4)</b>	<b>17 114</b>	<b>(-5.7)</b>

^ 少於 5 船舶  
^ Less than 5 ships

備註： 此表內的遠洋輪船及內河船隻數目不能直接地加在一起，因為同一艘船舶在一年內可能會被歸納於遠洋及內河船舶類別，視乎該船舶在該年度不同的抵港旅程是否超越內河航限而定。

Remark: The number of ocean vessels and river vessels in this table cannot be grouped together by simple addition as the same vessel may be classified as ocean and river vessel during a year depending whether her trips to Hong Kong in that year were beyond the river trade limit or not.

註釋： (1) 包括所有在二零零八年抵港船舶總數少於二十船舶的旗號。

Note: (1) Including those flags of which their total number of vessels calling Hong Kong were less than 20 in 2008.

表 6  
TABLE 6

2008 年按船舶類型分析離港船舶的平均在港停留時間  
Average Time in Port for Vessels Departing Hong Kong by Ship Type, 2008

小時  
Hours

船舶類型 Ship Type	遠洋輪船 Ocean Vessels	內河船隻 River Vessels	總計 Total
化學品運載船 Chemical Carrier/Tanker	12	49	22
普通貨船 Conventional Cargo Vessel	30	29	29
郵船/渡輪 Cruise/Ferry	12	N.A.	N.A.
散裝乾貨船 Dry Bulk Carrier	40	30	35
漁船/魚類加工船 Fishing/Fish Processing Vessel	98	-	-
全槽格式貨櫃船 Fully Cellular Container Vessel	22	32	30
液化氣體運載船 Gas Carrier/Tanker	46	34	46
躉船/駁船/貨艇 Lighter/Barge/Cargo Junk	158	71	72
油輪 Oil Tanker	25	47	35
滾裝卸式船 Roll On/Roll Off	27	12	25
半貨櫃船 Semi-container Vessel	37	37	37
拖船 Tug	122	69	71
其他 Others	48	23	29
<b>所有船舶類型 All Ship Type</b>	<b>26</b>	<b>38</b>	<b>35</b>

表 7  
TABLE 7

2008 年靠泊貨櫃碼頭的遠洋輪船統計資料  
Statistics on Ocean Vessels Calling Container Terminals, 2008

項目 Item	數目 Number	比重百分率 Percentage Share
	(%)	
在貨櫃碼頭處理貨櫃的遠洋輪船船次 Ocean Vessel Arrivals with Containers Handled in Container Terminals	13 490 (+0.8)	100.0%
- 按載重噸分析 - Analysed by Deadweight (DWT)		
少於 10 000 載重噸 Under 10 000 DWT	860 (-13.0)	6.3%
10 000 - 19 999 載重噸 10 000 - 19 999 DWT	2 360 (-1.0)	17.5%
20 000 - 29 999 載重噸 20 000 - 29 999 DWT	2 250 (-1.2)	16.7%
30 000 - 39 999 載重噸 30 000 - 39 999 DWT	1 710 (-2.6)	12.7%
40 000 - 49 999 載重噸 40 000 - 49 999 DWT	1 180 (-13.3)	8.8%
50 000 - 99 999 載重噸 50 000 - 99 999 DWT	4 210 (+8.7)	31.2%
100 000 載重噸及以上 100 000 DWT and above	920 (+23.1)	6.8%
- 按主要貿易地區/國家分析 (根據所申報的上一個停靠港口) - Analysed by Principal Trading Region/Country (Based on Reported Previous Port)		
東南亞 South East Asia	4 450 (-0.5)	33.0%
中國內地 Mainland China	3 920 (+0.6)	29.0%
台灣 Taiwan	2 750 (+7.4)	20.4%
北美洲 North America	770 (+1.6)	5.7%
日本 Japan	600 (-10.9)	4.5%
西歐 Western Europe	340 (-1.5)	2.5%
中美洲、南美洲 Central and South America	200 (-0.5)	1.5%
大洋洲 Oceania	160 (-1.9)	1.2%
非洲 Africa	100 (-10.8)	0.7%
中東 Middle East	70 (-29.5)	0.5%
獨立國家聯合體及東歐 CIS and Eastern Europe	70 (+4.3)	0.5%
其他 Others	70 (+59.5)	0.5%
使用貨櫃碼頭處理貨櫃的遠洋輪船平均在港停留時間 (小時) Average Time in Port for Ocean Vessels with Containers Handled in Container Terminals (Hours)	14	

表 8  
TABLE 8

2008 年按夏季吃水分析抵港遠洋輪船的船次  
Ocean Vessel Arrivals by Summer Draft, 2008

夏季吃水 (米) Summer Draft (m)	抵港船次 No. of Vessel Arrivals	比重百分率 Percentage Share
	(%)	
少於 2.00      Under 2.00	1 170      (-1.3)	3.3%
2.00 - 3.99	5 760      (+7.3)	16.1%
4.00 - 5.99	4 040      (-17.5)	11.3%
6.00 - 7.99	4 030      (+0.5)	11.2%
8.00 - 9.99	6 590      (-9.6)	18.4%
10.00 - 11.99	5 000      (-14.0)	13.9%
12.00 - 13.99	3 500      (+5.6)	9.8%
14.00 - 15.99	4 980      (+8.9)	13.9%
16.00 - 17.99	490      (+8.9)	1.4%
18.00 及以上      18.00 and above	300      (+21.9)	0.8%
<b>總計      Total</b>	<b>35 850      (-3.5)</b>	<b>100.0%</b>

表 9  
TABLE 9

2008 年按船舶長度分析抵港遠洋輪船的船次  
Ocean Vessel Arrivals by Vessel Length, 2008

船舶長度 (米) Length Overall (m)	抵港船次 No. of Vessel Arrivals	比重百分率 Percentage Share
	(%)	
少於 30.0      Under 30.0	760      (-18.9)	2.1%
30.0 - 49.9	2 380      (+39.5)	6.6%
50.0 - 99.9	8 040      (-8.8)	22.4%
100.0 - 149.9	6 520      (-7.3)	18.2%
150.0 - 199.9	8 320      (-12.4)	23.2%
200.0 - 249.9	3 580      (+1.1)	10.0%
250.0 - 299.9	4 410      (+11.0)	12.3%
300.0 及以上      - 300.0 and above	1 850      (+11.8)	5.2%
<b>總計      Total</b>	<b>35 850      (-3.5)</b>	<b>100.0%</b>

表 10  
TABLE 10

2008 年按主要來港原因分析抵港遠洋輪船的船次  
Ocean Vessel Arrivals by Main Reason of Call, 2008

主要來港原因 Main Reason of Call	抵港船次 No. of Vessel Arrivals		比重百分率 Percentage Share
		(%)	
裝貨、卸貨 Loading and Discharging Cargo	21 010	(-7.7)	58.6%
交換文件 Switch Documents	3 170	(-1.8)	8.8%
裝貨 Loading Cargo	2 990	(+16.7)	8.3%
人事轉動 (乘客、船員等) Change of Personnel (Passengers, Crew, etc.)	2 930	(-18.2)	8.2%
卸貨 Discharging Cargo	2 510	(-18.0)	7.0%
船上用品補給 (燃料除外) Taking Stores (Except Bunkers)	610	(+62.1)	1.7%
補充燃料 Bunkers	400	(+4.2)	1.1%
緊急修理、非例行入乾塢 Emergency Repair, Non-routine Dry Docking	50	(+33.3)	0.1%
其他 Others	2 170	(+85.2)	6.1%
<b>總計 Total</b>	<b>35 850</b>	<b>(-3.5)</b>	<b>100.0%</b>

表 11  
TABLE 11

2008 年跨境客運碼頭<sup>(1)</sup>的抵港及離港航次統計資料  
Statistics on Vessel Arrivals and Departures at Cross-Boundary Ferry Terminals<sup>(1)</sup>, 2008

來往 From/To	運輸工具類別 Type of Carrier	提供服務的船舶/ 直升機數目 No. of Vessels/ Helicopters in Services	抵港 Arrivals				離港 Departures			
			航次 No. of Trips		淨註冊噸位(千噸) NRT ('000)		航次 No. of Trips		淨註冊噸位(千噸) NRT ('000)	
		(%)	(%)	(%)	(%)	(%)	(%)	(%)	(%)	
澳門 Macau	雙體船 Catamaran	39 (+30.0)	32 530 (+36.9)	6 785 (+40.7)	33 120 (+36.1)	6 856 (+39.4)				
	噴射飛翼船 Jetfoil	14 (0)	16 690 (-11.3)	1 640 (-10.9)	16 760 (-10.9)	1 646 (-10.5)				
	直升機 Helicopter	5 (0)	8 660 (-0.6)	- (-)	8 660 (-0.6)	- (-)				
<b>小計 - 澳門 Sub-total - Macau</b>			<b>57 880 (+12.8)</b>	<b>8 425 (+26.4)</b>	<b>58 530 (+12.9)</b>	<b>8 503 (+25.8)</b>				
斗門 Doumen	雙體船 Catamaran	0 (-100.0)	0 (-100.0)	0 (-100.0)	0 (-100.0)	0 (-100.0)	0 (-100.0)	0 (-100.0)	0 (-100.0)	
高明 Gaoming	雙體船 Catamaran	4 (-20.0)	370 (-4.7)	60 (-2.8)	360 (-6.2)	60 (-4.4)				
虎門 Humen	雙體船 Catamaran	7 (-12.5)	2 650 (-16.2)	418 (-17.3)	2 650 (-16.1)	418 (-17.2)				
江門 Jiangmen	雙體船 Catamaran	4 (-42.9)	970 (-12.9)	134 (-12.7)	960 (-12.8)	134 (-12.6)				
蓮花山 Lianhuashan	雙體船 Catamaran	2 (-60.0)	1 440 (-1.8)	247 (0)	1 440 (-1.8)	247 (-0.1)				
南沙 Nansha	雙體船 Catamaran	5 (0)	1 870 (-6.5)	377 (-6.0)	1 830 (-8.5)	368 (-8.1)				
三埠 Sanbu	雙體船 Catamaran	0 (-100.0)	0 (-100.0)	0 (-100.0)	0 (-100.0)	0 (-100.0)	0 (-100.0)	0 (-100.0)	0 (-100.0)	
蛇口 Shekou	雙體船 Catamaran	14 (+16.7)	8 720 (-9.9)	1 030 (-12.9)	8 730 (-9.9)	1 032 (-12.9)				
深圳 Shenzhen	雙體船 Catamaran	22 (+46.7)	3 400 (-42.3)	527 (-46.5)	3 080 (-45.1)	478 (-48.8)				

註釋： (1) 包括港澳碼頭、中港碼頭、屯門碼頭及海天客運碼頭的統計。

Note: (1) Including Macau Ferry Terminal, China Ferry Terminal, Tuen Mun Ferry Terminal and SkyPier.

表 11 - 續  
TABLE 11 - Cont'd

來往 From/To	運輸工具類別 Type of Carrier	提供服務的船舶/ 直升機數目 No. of Vessels/ Helicopters in Services	抵港 Arrivals				離港 Departures			
			航次 No. of Trips		淨註冊噸位 (千噸) NRT ('000)		航次 No. of Trips		淨註冊噸位 (千噸) NRT ('000)	
		(%)	(%)	(%)	(%)	(%)	(%)	(%)	(%)	
順德 Shunde	雙體船 Catamaran	4 (-20.0)	2 200 (-5.4)	370 (-5.3)	2 190 (-4.6)	367 (-4.5)				
中山 Zhongshan	雙體船 Catamaran	5 (-16.7)	3 710 (-15.7)	631 (-15.7)	3 710 (-15.3)	631 (-15.3)				
珠海 Zhuhai	雙體船 Catamaran	9 (-10.0)	6 340 (-4.5)	1 075 (-4.4)	6 330 (-4.5)	1 073 (-4.3)				
<b>小計 - 內河港口 Sub-total - River Trade Ports</b>			<b>31 680 (-15.1)</b>	<b>4 869 (-16.7)</b>	<b>31 290 (-15.4)</b>	<b>4 808 (-16.8)</b>				
廈門 Xiamen	大船 Conventional Ferry	1 (0)	10 (-18.2)	5 (-87.7)	10 (-16.7)	8 (-80.4)				
<b>小計 - 中國沿岸港口 Sub-total - Mainland Coastal Ports</b>			<b>10 (-18.2)</b>	<b>5 (-87.7)</b>	<b>10 (-16.7)</b>	<b>8 (-80.4)</b>				
公海 High Seas	大船 Conventional Ferry	1 (0)	600 (-0.7)	642 (-70.1)	600 (-0.7)	642 (-70.1)				
<b>小計 - 公海 Sub-total - High Seas</b>			<b>600 (-0.7)</b>	<b>642 (-70.1)</b>	<b>600 (-0.7)</b>	<b>642 (-70.1)</b>				
<b>總計 Total</b>			<b>90 160 (+1.1)</b>	<b>13 941 (-5.1)</b>	<b>90 430 (+1.1)</b>	<b>13 962 (-5.2)</b>				

表 12  
TABLE 12

2008 年按船舶類型分析香港過境船舶的船次  
Number of Vessel Trips Transit Hong Kong by Ship Type, 2008

船舶類型 Ship Type	過境船次 Vessel Trips Transit Hong Kong	變動百分率 Percentage Change	淨註冊噸位 (千噸) NRT ('000)	變動百分率 Percentage Change
全槽格式貨櫃船 Fully Cellular Container Vessel	11 710	+15.1%	308 085	+19.6%
拖船 Tug	980	+14.3%	542	+26.3%
散裝乾貨船 Dry Bulk Carrier	480	-9.1%	10 128	-0.1%
普通貨船 Conventional Cargo Vessel	430	-25.9%	1 920	-11.9%
油輪 Oil Tanker	160	-19.3%	1 451	+9.9%
液化氣體運載船 Gas Carrier/Tanker	110	-7.7%	2 986	-12.8%
化學品運載船 Chemical Carrier/Tanker	100	+6.5%	244	-19.7%
滾裝卸式船 Roll On/Roll Off	10	-61.5%	18	-81.9%
半貨櫃船 Semi-container Vessel	10	-46.7%	63	-32.9%
其他 Others	560	+20.3%	451	+14.2%
<b>總計 Total</b>	<b>14 540</b>	<b>+11.5%</b>	<b>325 886</b>	<b>+18.1%</b>

資料來源： 海事處船隻航行監察中心  
Data Source: Vessel Traffic Centre, Marine Department



表 13  
TABLE 13

2008 年按跨境客運碼頭分析客運量  
Passenger Throughput by Cross-Boundary Ferry Terminals, 2008

來往 From/To	澳門 Macau		中國內地 Mainland China		公海 High Seas		總計 Total	
		(%)		(%)		(%)		(%)
港澳客運碼頭 <sup>(1)</sup> Macau Ferry Terminal <sup>(1)</sup>	14 690 400 <sup>(3)</sup>	(+17.2)	1 433 000	(-15.7)	-	(-)	16 123 400	(+13.3)
中國客運碼頭 <sup>(1)</sup> China Ferry Terminal <sup>(1)</sup>	3 881 300	(-9.9)	3 875 700	(-20.4)	313 500	(-1.5)	8 070 500	(-15.0)
屯門客運碼頭 <sup>(2)</sup> Tuen Mun Ferry Terminal <sup>(2)</sup>	-	(-)	1 300	(-99.2)	-	(-)	1 300	(-99.2)
海天碼頭 SkyPier	606 500	(+31.4)	1 474 500	(-8.2)	-	(-)	2 080 900	(+0.6)
<b>總計 Total</b>	<b>19 178 100</b>	<b>(+10.8)</b>	<b>6 784 500</b>	<b>(-18.5)</b>	<b>313 500</b>	<b>(-1.5)</b>	<b>26 276 100</b>	<b>(+1.3)</b>

註釋： (1) 這數字與入境事務處發布的統計數字並不相等，原因在於入境事務處的數字包括毋須付船費的乘客 [例如不足一歲者]。

(2) 屯門客運碼頭由二零零六年十一月三日開始運作。

(3) 乘搭直升機經港澳碼頭來往澳門乘客沒有計算在內 (2008 年共 106 100 人次)。

Notes: (1) The figures do not tally with those released by the Immigration Department because the figures of Immigration Department cover the passengers who are not required to pay fares (e.g. passengers less than 1 year of age).

(2) The Tuen Mun Ferry Terminal started operation with effect from 3 November 2006.

(3) The helicopter passengers to and from Macau via Macau Ferry Terminal are excluded (106 100 in 2008).

資料來源： 香港國際機場客運碼頭服務有限公司及海事處客運碼頭組

Data Source: Hong Kong International Airport Ferry Terminal Services Ltd and Ferry Terminals Section, Marine Department

表 14  
TABLE 14

2008 年按航線分析抵港及離港乘客人次  
Passenger Arrivals and Departures by Routes, 2008

I. 港澳碼頭、中港碼頭和屯門碼頭  
Macau Ferry Terminal, China Ferry Terminal and Tuen Mun Ferry Terminal

來往 From/To	運輸工具類別 Type of Carrier	抵港乘客 Passenger Arrivals		離港乘客 Passenger Departures	
		乘客人次(千位數) Passengers ('000)	載客率 Passenger Load Factor	乘客人次(千位數) Passengers ('000)	載客率 Passenger Load Factor
		(%)	(%)	(%)	(%)
澳門 Macau	雙體船 Catamaran	5 647 (+31.8)	48.8% (-6.3)	6 922 (+23.3)	58.9% (-10.0)
	噴射飛翼船 Jetfoil	2 961 (-13.8)	73.6% (-3.0)	3 041 (-13.2)	75.2% (-2.7)
	直升機 Helicopter	48 (-20.0)	46.5% (-19.5)	58 (-15.9)	55.6% (-15.4)
<b>小計 - 澳門 Sub-total – Macau</b>		<b>8 657 (+11.3)</b>	<b>55.1% (-8.8)</b>	<b>10 021 (+9.1)</b>	<b>63.0% (-9.3)</b>
斗門 Doumen	雙體船 Catamaran	0 (-100.0)	0% (-100.0)	0 (-100.0)	0% (-100.0)
高明 Gaoming	雙體船 Catamaran	57 (-25.8)	46.1% (-22.0)	61 (-25.7)	49.4% (-20.8)
虎門 Humen	雙體船 Catamaran	17 (-14.9)	47.3% (+149.1)	18 (-11.1)	47.6% (+139.9)
江門 Jiangmen	雙體船 Catamaran	116 (-19.8)	33.4% (-7.4)	122 (-16.7)	35.3% (-4.0)
蓮花山 Lianhuashan	雙體船 Catamaran	203 (-14.3)	39.0% (-14.2)	174 (-5.8)	33.5% (-5.7)
南沙 Nansha	雙體船 Catamaran	240 (-19.6)	34.2% (-11.9)	226 (-17.8)	31.6% (-11.8)
三埠 Sanbu	雙體船 Catamaran	0 (-100.0)	0% (-100.0)	0 (-100.0)	0% (-100.0)
蛇口 Shekou	雙體船 Catamaran	180 (-40.2)	17.7% (-19.4)	188 (-38.5)	18.4% (-17.3)
深圳 Shenzhen	雙體船 Catamaran	49 (-72.6)	18.6% (-16.5)	62 (-70.0)	4.8% (-79.0)
順德 Shunde	雙體船 Catamaran	383 (-15.4)	50.6% (-10.0)	375 (-14.1)	49.7% (-8.5)
中山 Zhongshan	雙體船 Catamaran	547 (-10.4)	44.0% (+11.3)	521 (-14.0)	42.0% (+7.3)
珠海 Zhuhai	雙體船 Catamaran	929 (-13.2)	48.2% (-0.6)	840 (-15.2)	44.1% (-1.9)
<b>小計 - 內河港口 Sub-total - River Trade Ports</b>		<b>2 721 (-20.5)</b>	<b>39.2% (+0.2)</b>	<b>2 588 (-21.4)</b>	<b>32.6% (-12.6)</b>
廈門 Xiamen	大船 Conventional Ferry	1 (-61.3)	10.5% (-52.6)	1 (-61.1)	10.0% (-53.3)
<b>小計 - 中國沿岸港口 Sub-total – Mainland Coastal Ports</b>		<b>1 (-61.3)</b>	<b>10.5% (-52.6)</b>	<b>1 (-61.1)</b>	<b>10.0% (-53.3)</b>

表 14 - 續  
TABLE 14 - Cont'd

I. 港澳碼頭、中港碼頭和屯門碼頭 (續)

Macau Ferry Terminal, China Ferry Terminal and Tuen Mun Ferry Terminal (Cont'd)

來往 From/To	運輸工具類別 Type of Carrier	抵港乘客 Passenger Arrivals		離港乘客 Passenger Departures	
		乘客人次(千位數) Passengers ('000)	載客率 Passenger Load Factor	乘客人次(千位數) Passengers ('000)	載客率 Passenger Load Factor
		(%)	(%)	(%)	(%)
公海 High Seas	大船 Conventional Ferry	157 (-1.5)	47.3% (-0.9)	157 (-1.5)	47.3% (-0.9)
<b>小計 - 公海 Sub-total - High Seas</b>		<b>157 (-1.5)</b>	<b>47.3% (-0.9)</b>	<b>157 (-1.5)</b>	<b>47.3% (-0.9)</b>
<b>港澳碼頭、中港碼頭及屯門碼頭 Macau Ferry Terminal, China Ferry Terminal and Tuen Mun Ferry Terminal</b>		<b>11 535 (+1.5)</b>	<b>50.2% (-3.0)</b>	<b>12 766 (+1.0)</b>	<b>52.8% (-6.5)</b>

II. 海天客運碼頭  
SkyPier

來往 From/To	運輸工具類別 Type of Carrier	抵港乘客 Passenger Arrivals		離港乘客 Passenger Departures	
		乘客人次(千位數) Passengers ('000)	載客率 Passenger Load Factor	乘客人次(千位數) Passengers ('000)	載客率 Passenger Load Factor
		(%)	(%)	(%)	(%)
澳門 Macau	雙體船 Catamaran	404 (+21.4)	48.7% (-3.0)	202 (+57.3)	24.9% (+7.3)
<b>小計 - 澳門 Sub-total - Macau</b>		<b>404 (+21.4)</b>	<b>48.7% (-3.0)</b>	<b>202 (+57.3)</b>	<b>24.9% (+7.3)</b>
虎門 Humén	雙體船 Catamaran	238 (+2.2)	29.5% (+15.4)	181 (-5.8)	22.3% (+6.3)
蛇口 Shekou	雙體船 Catamaran	357 (-7.0)	29.4% (-9.3)	152 (-12.6)	12.5% (-14.8)
深圳 Shenzhen	雙體船 Catamaran	221 (-22.8)	25.7% (+4.8)	191 (-21.7)	27.2% (+7.9)
中山 Zhongshan	雙體船 Catamaran	24 (-18.9)	18.6% (+6.0)	54 (+27.5)	30.6% (+57.5)
珠海 Zhuhai	雙體船 Catamaran	31 (-)	11.5% (-)	26 (-)	8.7% (-)
<b>小計 - 內河港口 Sub-total - River Trade Ports</b>		<b>872 (-8.0)</b>	<b>26.5% (-0.5)</b>	<b>603 (-8.5)</b>	<b>18.9% (-2.6)</b>
<b>海天客運碼頭 SkyPier</b>		<b>1 276 (-0.4)</b>	<b>31.0% (+2.1)</b>	<b>805 (+2.3)</b>	<b>20.1% (+0.9)</b>

表15  
TABLE 15

2008年按主要貨物裝卸地點分析貨櫃吞吐量  
Container Throughput by Main Cargo Handling Location, 2008

千個標準貨櫃單位  
'000 TEUs

類別 Category	貨櫃碼頭 Container Terminals						貨櫃碼頭以外 Other than Container Terminals						總計 Total	
	遠洋 Ocean		內河 River		小計 Sub-total		遠洋 Ocean		內河 River		小計 Sub-total			
裝上 Loaded	(% )		(% )		(% )		(% )		(% )		(% )		(%)	
載貨貨櫃 Laden Container	7 511	(-0.2)	845	(-0.1)	8 356	(-0.2)	540	(+8.5)	1 536	(+1.6)	2 076	(+3.3)	10 432	(+0.5)
空貨櫃 Empty Container	329	(+14.9)	276	(+13.6)	605	(+14.3)	38	(-58.0)	1 018	(+6.5)	1 056	(+0.9)	1 661	(+5.4)
<b>小計 Sub-total</b>	<b>7 840</b>	<b>(+0.3)</b>	<b>1 121</b>	<b>(+2.9)</b>	<b>8 960</b>	<b>(+0.7)</b>	<b>578</b>	<b>(-1.7)</b>	<b>2 554</b>	<b>(+3.5)</b>	<b>3 132</b>	<b>(+2.5)</b>	<b>12 092</b>	<b>(+1.1)</b>
卸下 Discharged														
載貨貨櫃 Laden Container	5 892	(+4.1)	1 227	(+11.1)	7 118	(+5.3)	1 109	(-5.7)	1 614	(+1.6)	2 722	(-1.5)	9 841	(+3.3)
空貨櫃 Empty Container	1 581	(-1.9)	66	(+42.7)	1 647	(-0.6)	76	(+13.1)	838	(+6.0)	914	(+6.5)	2 561	(+1.8)
<b>小計 Sub-total</b>	<b>7 473</b>	<b>(+2.8)</b>	<b>1 293</b>	<b>(+12.4)</b>	<b>8 766</b>	<b>(+4.1)</b>	<b>1 185</b>	<b>(-4.7)</b>	<b>2 452</b>	<b>(+3.1)</b>	<b>3 636</b>	<b>(+0.4)</b>	<b>12 402</b>	<b>(+3.0)</b>
合計 Overall														
載貨貨櫃 Laden Container	13 402	(+1.7)	2 072	(+6.2)	15 474	(+2.2)	1 649	(-1.5)	3 150	(+1.6)	4 798	(+0.5)	20 272	(+1.8)
空貨櫃 Empty Container	1 910	(+0.6)	341	(+18.2)	2 252	(+3.0)	114	(-27.6)	1 856	(+6.2)	1 970	(+3.4)	4 222	(+3.2)
<b>總計 Total</b>	<b>15 313</b>	<b>(+1.5)</b>	<b>2 413</b>	<b>(+7.8)</b>	<b>17 726</b>	<b>(+2.3)</b>	<b>1 763</b>	<b>(-3.7)</b>	<b>5 006</b>	<b>(+3.3)</b>	<b>6 769</b>	<b>(+1.4)</b>	<b>24 494</b>	<b>(+2.1)</b>

表 16  
TABLE 16

2008 年按貨櫃碼頭以外的主要貨物裝卸地點分析裝卸的貨櫃  
Containers Discharged/Loaded at Main Cargo Handling Locations Other than Container Terminals, 2008

千個標準貨櫃單位  
'000 TEUs

主要貨物裝卸地點 (貨櫃碼頭以外) Main Cargo Handling Location (Other than Container Terminals)	遠洋 Ocean				內河 River				總計 Total	
	卸下 Discharged		裝上 Loaded		卸下 Discharged		裝上 Loaded			
	載貨貨櫃 Laden	空貨櫃 Empty	載貨貨櫃 Laden	空貨櫃 Empty	載貨貨櫃 Laden	空貨櫃 Empty	載貨貨櫃 Laden	空貨櫃 Empty	載貨貨櫃 Laden	空貨櫃 Empty
	(%)	(%)	(%)	(%)	(%)	(%)	(%)	(%)	(%)	(%)
泊位和倉庫碼頭 Berths and Wharves	170 (-8.6)	23 (-3.4)	87 (-21.7)	24 (-41.6)	1 092 (+8.0)	791 (+7.7)	1 327 (+7.0)	721 (+15.0)	2 676 (+5.0)	1 559 (+9.3)
碇泊處 Anchorages	905 (-1.8)	53 (+22.9)	443 (+21.3)	14 (-71.7)	521 (-9.2)	47 (-16.8)	209 (-22.8)	297 (-9.8)	2 078 (-2.5)	411 (-14.0)
浮泡 Buoys	33 (-50.3)	† (-75.3)	10 (-52.1)	0 (-)	† (-83.1)	0 (-)	0(-100.0)	0 (-)	44 (-51.6)	† (-75.3)
<b>總計 Total</b>	<b>1 109 (-5.7)</b>	<b>76 (+13.1)</b>	<b>540 (+8.5)</b>	<b>38 (-58.0)</b>	<b>1 614 (+1.6)</b>	<b>838 (+6.0)</b>	<b>1 536 (+1.6)</b>	<b>1018 (+6.5)</b>	<b>4 798 (+0.5)</b>	<b>1 970 (+3.4)</b>

† 少於 500 個標準貨櫃單位

† Less than 500 TEUs

表 17  
TABLE 17

2008 年按貨物種類及運輸方式劃分的裝卸港口貨物  
Port Cargo Discharged/Loaded by Cargo Type and Mode of Transport, 2008

千公噸  
'000 Tonnes

貨物種類 Cargo Type	海運 Seaborne		河運 River		水運總計 Waterborne total	
	卸下 Discharged	裝上 Loaded	卸下 Discharged	裝上 Loaded	卸下 Discharged	裝上 Loaded
	(%)	(%)	(%)	(%)	(%)	(%)
包裝散貨 Break bulk cargo	5 088 (-21.7)	1 250 (-11.7)	2 632 (-35.6)	9 690 (+26.4)	7 720 (-27.1)	10 941 (+20.4)
貨櫃貨物 Containerized cargo	77 633 (+2.8)	67 535 (+4.9)	25 028 (+10.2)	27 369 (-0.3)	102 661 (+4.5)	94 905 (+3.4)
無包裝液態散貨 Unpacked liquid bulk cargo	14 086 (-11.1)	312 (-58.1)	1 560 (+81.4)	463 (-10.3)	15 646 (-6.3)	775 (-38.5)
無包裝固態散貨 Unpacked solid bulk cargo	13 412 (+15.6)	657 (-52.5)	6 538 (+54.9)	6 148 (+995.9)	19 950 (+26.1)	6 805 (+250.2)
<b>總計 Total</b>	<b>110 220 (+0.7)</b>	<b>69 755 (+2.7)</b>	<b>35 757 (+12.1)</b>	<b>43 671 (+20.6)</b>	<b>145 977 (+3.3)</b>	<b>113 425 (+8.9)</b>

資料來源：政府統計處船隻及貨運統計組  
Data Source: Shipping and Cargo Statistics Section, Census and Statistics Department

表 18  
TABLE 18

海港繫泊浮泡統計資料  
Harbour Mooring Buoys Statistics

A. 浮泡數目 (年底數字) Number of Buoys (Figures as at End of the Year)	2007	2008
"A 級" 繫泊浮泡數目 No. of "A class" mooring buoys	21	19
"B 級" 繫泊浮泡數目 No. of "B class" mooring buoys	10	10

B. 使用情況 Usage	2007	2008
"A 級" 浮泡訂用日數 Days booked for "A class" buoys	2 143	1 826
"B 級" 浮泡訂用日數 Days booked for "B class" buoys	847	725
"A 級" 浮泡訂用百分率 Percentage of "A class" buoys used based on booking	41.2%	36.6%
"B 級" 浮泡訂用百分率 Percentage of "B class" buoys used based on booking	31.5%	28.1%
上述數字只顯示訂用情況，實際使用率則如下： Whilst the above figures are indicative of booking usage, the actual physical occupancy rates are as follows:		
"A 級" 浮泡                      "A class" buoys	27.93%	25.60%
"B 級" 浮泡                      "B class" buoys	21.30%	18.21%

C. 浮泡保養 Buoys Maintenance	2007	2008
按期保養的燈浮標                      Light Buoys maintained	109	114
按期保養的養魚區浮泡                      Mariculture Buoys maintained	178	178
按期保養的小型繫泊浮泡                      Minor Mooring maintained	169	169
按期保養的大型繫泊浮泡                      Major Mooring maintained	20	20
按期保養的"A 級" 海港繫泊浮泡                      Maintained the "A Class" Harbour mooring	21	19
按期保養的"B 級" 海港繫泊浮泡                      Maintained the "B Class" Harbour mooring	10	10

資料來源： (A) & (B) 海事處船隻航行監察中心  
(C) 海事處港口後勤組

Data Sources: (A) & (B) Vessel Traffic Centre,  
Marine Department  
(C) Port Logistics Section, Marine Department

表 19  
TABLE 19

2008 年按分佈地點分析香港私用繫泡數目  
Number of Private Moorings Laid in Hong Kong by Location, 2008

	分佈地點	Location	私用繫泡數目 Number of Private Mooring
中部 Central	銅鑼灣避風塘	Causeway Bay Typhoon Shelter	315
	銅鑼灣避風塘 (防波堤外)	Causeway Bay Typhoon Shelter (Outside Breakwater)	0
	荔枝角	Lai Chi Kok	3
	新油麻地避風塘	New Yaumatei Typhoon Shelter	17
	新油麻地避風塘 (防波堤外)	New Yaumatei Typhoon Shelter (Outside Breakwater)	33
	藍巴勒海峽 (避風塘外)	Rambler Channel (Outside Typhoon Shelter)	6
	三家村避風塘	Sam Ka Tsuen Typhoon Shelter	1
	昂船洲東南	Stonecutters Island South East	1
	汀九	Ting Kau	62
	土瓜灣	To Kwa Wan	4
	青衣北	Tsing Yi North	4
	荃灣	Tsuen Wan	93
	油塘灣	Yau Tong Wan	2
	<b>小計</b>	<b>Sub-total</b>	<b>541</b>
東部 East	赤徑口 (大灘海)	Chek Keng Hau (Long Harbour)	0
	西貢白沙灣	Hebe Haven	680
	將軍澳	Junk Bay	1
	西貢滘西洲	Kau Sai Chau, Sai Kung	1
	高塘口 (大灘海)	Ko Tong Hau (Long Harbour)	1
	大埔船灣海	Shuen Wan Hoi, Tai Po	0
	大埔大美督	Tai Mei Tuk, Tai Po	35
	西貢大網仔	Tai Mong Tsai, Sai Kung	7
	西貢大網仔(阿公灣)	Tai Mong Tsai, Sai Kung (A Kung Wan)	3
	西貢斬竹灣	Tsam Chuk Wan, Sai Kung	10
	西貢早禾坑	Tso Wo Hang, Sai Kung	17
	往灣 (黃竹角海)	Wong Wan (Wong Chuk Kok Hoi)	2
	<b>小計</b>	<b>Sub-total</b>	<b>757</b>



表 19 – 續  
TABLE 19 – Cont'd

	分佈地點	Location	私用繫泡數目 Number of Private Mooring
南部 South	香港仔南避風塘 (白沙灣)	Aberdeen South Typhoon Shelter (Pak Sha Wan)	1
	香港仔南避風塘 (布廠灣)	Aberdeen South Typhoon Shelter (Po Chong Wan)	352
	香港仔西避風塘	Aberdeen West Typhoon Shelter	1
	香港仔西避風塘 (防波堤外)	Aberdeen West Typhoon Shelter (Outside Breakwater)	18
	南丫島下尾灣 (電力站)	Ha Mei Wan, Lamma Island (Power Station)	10
	南丫島蘆荻灣	Lo Tik Wan, Lamma Island	0
	南丫島鹿洲灣	Luk Chau Wan, Lamma Island	1
	熨波洲	Middle Island	88
	南丫島模達灣	Mo Tat Wan, Lamma Island	0
	赤柱正灘	Stanley Main Beach	4
	大潭港	Tai Tam Harbour	27
	南丫島榕樹灣	Yung Shue Wan, Lamma Island	2
		<b>小計</b>	<b>Sub-total</b>
西部 West	長洲避風塘	Cheung Chau Typhoon Shelter	11
	大嶼山長沙欄	Cheung Sha Lan, Lantau Island	28
	大嶼山愉景灣	Discovery Bay, Lantau Island	6
	大嶼山稔樹灣	Nim Shue Wan, Lantau Island	14
	北大嶼山	North Lantau	1
	大欖	Tai Lam	3
	青衣西	Tsing Yi West	3
	屯門避風塘	Tuen Mun Typhoon Shelter	7
	屯門避風塘 (防波堤外)	Tuen Mun Typhoon Shelter (Outside Breakwater)	6
		<b>小計</b>	<b>Sub-total</b>
<b>總計</b> <b>Total</b>			<b>1 881</b>

資料來源： 海事處私用繫泡分組  
Data Source: Private Mooring Sub-unit, Marine Department

**表 20**  
**TABLE 20**  
**碇泊處一覽**  
**List of Anchorages**

碇泊處 Anchorages	面積 (公頃) Area (Hectares)
<b>A. 檢疫及入境船隻碇泊處</b> <b>Quarantine and Immigration Anchorages</b>	
1. 西面檢疫及入境船隻碇泊處      Western Quarantine and Immigration Anchorage	121.1
2. 東面檢疫及入境船隻碇泊處      Eastern Quarantine and Immigration Anchorage	35.1
3. 屯門入境船隻碇泊處              Tuen Mun Immigration Anchorages	89.9
小計 Sub-total	<b>246.1</b>
<b>B. 危險品碇泊處</b> <b>Dangerous Goods Anchorages</b>	
1. 交椅洲危險品碇泊處              Kau Yi Chau Dangerous Goods Anchorage	288.2
2. 荃灣危險品碇泊處                  Tsuen Wan Dangerous Goods Anchorage	61.9
3. 西面危險品碇泊處                  Western Dangerous Goods Anchorage	220.8
4. 糧船灣海危險品碇泊處           Rocky Harbour Dangerous Goods Anchorage	26.9
5. 將軍澳危險品碇泊處              Junk Bay Dangerous Goods Anchorage	28.9
6. 大鵬灣危險品碇泊處              Mirs Bay Dangerous Goods Anchorage	316.5
7. 南丫島南危險品碇泊處           South Lamma Dangerous Goods Anchorage	228.5
8. 危險品留用碇泊處                  Reserved Dangerous Goods Anchorage	37.3
小計 Sub-total	<b>1 209.0</b>
<b>C. 維修碇泊處</b> <b>Servicing Anchorages</b>	
1. 馬灣碇泊處                          Ma Wan Anchorage	138.4
2. 半山石碇泊處                      Pun Shan Shek Anchorage	352.1
3. 西面 1 號碇泊處                    Western Anchorage No.1	310.6
4. 西面 2 號碇泊處                    Western Anchorage No.2	278.7
5. 西面 3 號碇泊處                    Western Anchorage No.3	272.4
6. 南丫島北碇泊處                    North Lamma Anchorage	375.1
7. 南丫島西北碇泊處                North West Lamma Anchorage	553.9
8. 油麻地碇泊處                      Yau Ma Tei Anchorage	105.0
9. 奇力 1 號碇泊處                    Kellett Anchorage No.1	74.7
10. 奇力 2 號碇泊處                  Kellett Anchorage No.2	230.4
11. 奇力 3 號碇泊處                  Kellett Anchorage No.3	102.8
12. 深水角 1 號碇泊處                Sham Shui Kok Anchorage No.1	72.6
13. 深水角 2 號碇泊處                Sham Shui Kok Anchorage No.2	35.6
小計 Sub-total	<b>2 902.3</b>

表 20 – 續  
TABLE 20 – Cont'd

<b>碇泊處 (續)</b> <b>Anchorage (Cont'd)</b>	<b>面積 (公頃)</b> <b>Area (Hectares)</b>
<b>D. 領航特別碇泊處</b> <b>Pilotage Special Anchorages</b>	
1. 龍鼓水道碇泊處                      Urmston Road Anchorage	190.0
2. 南丫島東南碇泊處                      South East Lamma Anchorage	285.5
3. 南丫島西南碇泊處                      South West Lamma Anchorage	228.4
<b>小計</b> <b>Sub-total</b>	<b>703.9</b>
<b>E. 遮蔽碇泊處</b> <b>Sheltered Anchorages</b>	
1. 柴灣貨物裝卸灣                      Chai Wan Cargo Basin	11.2
2. 吉澳                                      Kat O	1.6
3. 沙頭角                                      Sha Tau Kok	0.6
4. 大澳                                      Tai O	4.0
5. 荃灣小型繫泊浮泡區                      Tsuen Wan Minor Moorings	3.7
6. 熨波洲                                      Middle Island	6.9
7. 白沙灣                                      Pak Sha Wan (Hebe Haven)	84.0
8. 西貢海                                      Sai Kung Harbour	4.3
9. 大潭港                                      Tai Tam Harbour	5.7
10. 斬竹灣                                      Tsam Chuk Wan (Jade Bay)	7.5
11. 聖士提反灣                                      St. Stephen's Bay	1.3
12. 大美督                                      Tai Mei Tuk	12.3
13. 汀九                                      Ting Kau	0.7
<b>小計</b> <b>Sub-total</b>	<b>143.8</b>
<b>總計</b> <b>Total</b>	<b>5 205.1</b>

資料來源： 海事處策劃、發展協調及港口保安部  
 Data Source: Planning, Development & Port Security Branch, Marine Department

**表 21**  
**TABLE 21**  
**避風塘一覽**  
**List of Typhoon Shelters**

	避風塘	Typhoon Shelters	面積 (公頃) Area (Hectares)
1.	南香港仔避風塘 <sup>(1)</sup>	Aberdeen South Typhoon Shelter <sup>(1)</sup>	26.1
2.	西香港仔避風塘	Aberdeen West Typhoon Shelter	34.2
3.	銅鑼灣避風塘 <sup>(2)</sup>	Causeway Bay Typhoon Shelter <sup>(2)</sup>	14.2
4.	長洲避風塘	Cheung Chau Typhoon Shelter	50.0
5.	觀塘避風塘	Kwun Tong Typhoon Shelter	33.8
6.	藍巴勒海峽避風塘	Rambler Channel Typhoon Shelter	12.9
7.	三家村避風塘	Sam Ka Tsuen Typhoon Shelter	1.9
8.	筲箕灣避風塘	Shau Kei Wan Typhoon Shelter	17.2
9.	船灣避風塘	Shuen Wan Typhoon Shelter	10.3
10.	土瓜灣避風塘	To Kwa Wan Typhoon Shelter	14.8
11.	屯門避風塘	Tuen Mun Typhoon Shelter	56.8
12.	新油麻地避風塘	New Yau Ma Tei Typhoon Shelter	64.6
13.	鹽田仔避風塘	Yim Tim Tsai Typhoon Shelter	9.2
14.	喜靈洲避風塘	Hei Ling Chau Typhoon Shelter	76.6
<b>總計</b>		<b>Total</b>	<b>422.6</b>

備註： 只包括於二零零七年一月二日在政府憲報中(編號: L.N. 285/2006)所公佈的避風塘。  
Remark: Including only those typhoon shelters promulgated in the Government Gazette (L.N. 285 of 2006) on 2.1.2007.

註釋： (1) 主要由遊樂船隻使用。  
(2) 包括 9.9 公頃面積給遊樂船隻使用。

Notes: (1) Mainly for use by pleasure vessels.  
(2) Including 9.9 hectares of area used by pleasure vessels.

資料來源： 海事處策劃、發展協調及港口保安部  
Data Source: Planning, Development & Port Security Branch, Marine Department

表 22  
TABLE 22

公眾貨物裝卸區一覽  
List of Public Cargo Working Areas

	公眾貨物裝卸區 Public Cargo Working Area	面積 (公頃) Area (Hectares)	符合發牌條件之停泊位長度 (米) Licensable Seafrontage (in Metres)
1.	茶果嶺公眾貨物裝卸區 Cha Kwo Ling Public Cargo Working Area	3.94	920
2.	柴灣公眾貨物裝卸區 Chai Wan Public Cargo Working Area	2.12	600
3.	觀塘公眾貨物裝卸區 Kwun Tong Public Cargo Working Area	2.30	692
4.	新油麻地公眾貨物裝卸區 New Yau Ma Tei Public Cargo Working Area	6.78	1 212
5.	藍巴勒海峽公眾貨物裝卸區 Rambler Channel Public Cargo Working Area	4.11	1 036
6.	昂船洲公眾貨物裝卸區 Stonecutters Island Public Cargo Working Area	3.56	672
7.	屯門公眾貨物裝卸區 Tuen Mun Public Cargo Working Area	3.30	660
8.	西區公眾貨物裝卸區 Western District Public Cargo Working Area	3.36	880
	<b>總計 Total</b>	<b>29.47</b>	<b>6 672</b>

資料來源： 海事處貨物裝卸組  
Data Source: Cargo Handling Section, Marine Department

表 23  
TABLE 23

垃圾收集、油污和檢控個案統計資料  
Refuse Collection, Oil Pollution and Prosecution Statistics

A. 垃圾收集和油污事故  
Refuse Collection and Oil Pollution Incident

		2006	2007	2008
1.	從海港收集的垃圾(公噸) Refuse collected from harbour (tonnes)	12 167	12 209	12 913
2.	從船舶收集的垃圾(公噸) Refuse collected from vessel (tonnes)	4 043	4 341	4 261
3.	接報的疑似油污事故(宗) Alleged Oil Pollution incidents, reported (cases)	132	149	114

B. 檢控統計數字  
Prosecution Statistics

罪行 Offence	陳詞/聆訊個案 No. of Cases Heard		定罪個案 No. of Cases Convicted		罰款 Fine (HK\$)	
	2007	2008	2007	2008	2007	2008
1. 違反碰撞規例 Breach of Collision Regulations	76	55	73	53	103 350	61 450
2. 船上沒有合格船長/輪機員 No qualified master/engineer on board	441	268	437	265	275 820	147 600
3. 違反牌照條件 Breach of license condition	99	82	99	81	75 160	57 300
4. 未經允許進入機場入口區域 Entered into airport approach area without permission	3	8	3	8	2 900	6 100
5. 靠泊於已展示禁止船隻靠泊告示的岸壁/登岸梯級 Lying alongside seawall/landing steps prohibited by Notice	28	30	28	29	19 580	21 100
6. 船隻未有領牌/並無有效牌照 Vessel was not licensed/did not have a valid license	136	101	136	100	182 850	125 100
7. 未獲允許運載乘客/超額運載乘客 Carrying passenger without permission/excessive passengers	54	61	54	61	39 490	39 100
8. 沒有陳示有效的驗船/保險證明書 Failing to display valid certificate of survey/insurance	7	19	7	18	4 000	10 100
9. 超速行駛 Steaming in excessive speed	72	54	72	54	50 300	39 400
10. 海上拋置廢物 Marine littering	0	1	0	1	0	700
11. 海上拋置廢物(定額罰款) <sup>(1)</sup> Marine littering (Fixed Penalty Notice) <sup>(1)</sup>	72	45	61	40	93 000	66 900
12. 在公共渡輪上吸煙 <sup>(2)</sup> Smoking on board public ferry <sup>(2)</sup>	0	0	0	0	0	0
13. 排放黑煙 Emission of black smoke	0	4	0	4	0	2 700
14. 其他海事罪行 Other marine offences	717	784	716	775	904 740	576 810
<b>總計 Total</b>	<b>1 705</b>	<b>1 512</b>	<b>1 686</b>	<b>1 489</b>	<b>1 751 190</b>	<b>1 154 360</b>

註釋： (1) 三個申請法庭命令個案，附加罰款\$4,500。

Notes: (1) Three Court Orders applied and an additional penalty of HK\$4,500 imposed.

(2) 個案由各公共渡輪公司提出再轉交海事處跟進檢控工作。

(2) Cases initiated by public ferry companies and referred to Marine Department for follow up prosecution actions.

資料來源： (A) 海事處港口後勤組  
(B) 海事處檢控小組

Data Sources: (A) Port Logistics Section, Marine Department  
(B) Prosecution Unit, Marine Department

表 24  
TABLE 24

2008 年底按噸位等級分析香港持牌船舶  
Hong Kong Licensed Vessels by Tonnage Classification, as at year end 2008

船舶類型 Vessel Type		60 淨噸及以下 60 Net Tons and Below	61 至 300 淨噸 61 - 300 Net Tons	300 淨噸以上 Over 300 Net Tons	總計 Total
第 I 類 Class I	(a) 渡輪船舶 Ferry Vessel	11	40	8	59
	(b) 水上食肆 Floating Restaurant	0	0	2	2
	(c) 小輪 Launch	178	47	0	225
	(d) 多用途船舶 Multi-Purposes Vessel	9	5	2	16
	(e) 原始船舶 Primitive Vessel	74	2	0	76
	(f) 固定船舶 Stationary Vessel	0	0	0	0
	<b>小計</b> <b>Sub-total</b>	<b>272</b>	<b>94</b>	<b>12</b>	<b>378</b>
第 II 類 Class II	(a) 起重機躉船 Cane Barge	0	1	3	4
	(b) 危險品運輸船 Dangerous Goods Carrier	1	7	22	30
	(c) 挖泥船 Dredger	0	0	0	0
	(d) 乾貨貨船 Dry Cargo Vessel	59	87	11	157
	(e) 非自航駁船 Dumb Lighter	4	23	453	480
	(f) 食油運輸船 Edible Oil Carrier	0	0	20	20
	(g) 平面工作躉 Flat-Top Work Barge	12	12	24	48
	(h) 浮塢 Floating Dock	1	0	2	3
	(i) 水上工場 Floating Workshop	0	1	0	1
	(j) 開底躉船 Hopper Barge	0	0	19	19
	(k) 登岸平台 Landing Platform	38	0	0	38
	(l) 登岸浮躉 Landing Pontoon	3	20	10	33
	(m) 有毒液體物質運輸船 Noxious Liquid Substance Carrier	0	0	4	4
	(n) 石油運輸船 Oil Carrier	19	103	37	159
	(o) 領港船 Pilot Boat	15	0	0	15

表 24 – 續  
TABLE 24 – Cont'd

船舶類型 Vessel Type		60 淨噸及以下 60 Net Tons and Below	61 至 300 淨噸 61 - 300 Net Tons	300 淨噸以上 Over 300 Net Tons	總計 Total
第 II 類 Class II	(p) 特別用途船舶 Special Purpose Vessel	0	1	0	1
	(q) 固定船舶 Stationary Vessel	103	28	6	137
	(r) 交通船 Transportation Boat	33	0	0	33
	(s) 交通舢舨 Transportation Sampan	90	0	0	90
	(t) 拖船 Tug	61	104	0	165
	(u) 供水船 Water Boat	14	9	0	23
	(v) 工作船 Work Boat	294	11	1	306
	<b>小計</b> <b>Sub-total</b>	<b>747</b>	<b>407</b>	<b>612</b>	<b>1 766</b>
第 III 類 Class III	(a) 運魚船 Fish Carrier	1	1	0	2
	(b) 漁船舢舨 Fishing Sampan	859	0	0	859
	(c) 漁船 Fishing Vessel	597	1 194	0	1 791
	(d) 舷外機開敞式舢舨 Outboard Open Sampan	2 550	0	0	2 550
	<b>小計</b> <b>Sub-total</b>	<b>4 007</b>	<b>1 195</b>	<b>0</b>	<b>5 202</b>
第 IV 類 Class IV	(a) 機械輔助帆船 Auxiliary Powered Yacht	N.A.	N.A.	N.A.	503
	(b) 遊樂船 Cruiser	N.A.	N.A.	N.A.	1 799
	(c) 開敞式遊樂船 Open Cruiser	N.A.	N.A.	N.A.	3 666
	<b>小計</b> <b>Sub-total</b>	<b>N.A.</b>	<b>N.A.</b>	<b>N.A.</b>	<b>5 968</b>
住家船舶 <sup>(2)</sup> Dwelling Vessel <sup>(2)</sup>	-	-	-	4	
<b>總計</b> <b>Total</b>	<b>5 026</b>	<b>1 696</b>	<b>624</b>	<b>13 318 <sup>(1)</sup></b>	

註釋： (1) 已包括 21 艘閑置船舶。

Notes: (1) Including 21 laid-up vessels.

(2) 全部在銅鑼灣避風塘。

(2) All in Causeway Bay Typhoon Shelter.

資料來源： 海事處牌照及關務組

Data Source: Licensing and Port Formalities Section, Marine Department



表 25  
TABLE 25

船舶安全監督統計資料  
Ship Safety Statistics

A. 貨船安全統計數字 Cargo Ships Safety Statistics	2007	2008
<b>海事處註冊貨船數目</b> <b>No. of Cargo Ships in the Hong Kong Register</b> <ol style="list-style-type: none"> <li>1. 所管理公約貨船數目 (截至年底) No. of convention cargo ships (as at year end)</li> <li>2. 所管理公約貨船總噸位 (千公噸) (截至年底) Gross register tonnage of convention cargo ships ('000 tonnes) (as at year end)</li> <li>3. 新申請在香港註冊公約貨船數目 No. of convention cargo ships newly registered</li> <li>4. 新申請在香港註冊公約貨船總噸位 (千公噸) Gross register tonnage of convention cargo ships newly registered ('000 tonnes)</li> </ol>	<p>1 012</p> <p>35 849</p> <p>188</p> <p>6 526</p>	<p>1 135</p> <p>35 915</p> <p>226</p> <p>9 709</p>
<b>海事處註冊貨船品質審查/檢驗數目</b> <b>No. of Hong Kong Registered Cargo Ships Quality Checked/Inspected</b> <ol style="list-style-type: none"> <li>1. 品質審查的註冊貨船數目 Quality checks on Hong Kong registered cargo ships</li> <li>2. 品質檢驗和稽核貨船數目 No. of flag state quality control ship inspections and company visits</li> <li>3. 審核船體、機械和設備圖則數目 No. of plans examined in respect of hull, machinery and equipment</li> </ol>	<p>1 012</p> <p>52</p> <p>704</p>	<p>1 135</p> <p>54</p> <p>649</p>
<b>貨船設備安全證明書</b> <b>Cargo Ship Safety Equipment Certificate</b> <ol style="list-style-type: none"> <li>1. 所簽發的豁免證明書數目 No. of exemption certificates issued</li> <li>2. 應其他國家機關要求而檢驗的外來船舶，以簽發設備安全證明書 Foreign ships surveyed at the request of other national authorities for the issue of SEC</li> </ol>	<p>77</p> <p>0</p>	<p>111</p> <p>0</p>
<b>貨船無線電安全證明書</b> <b>Cargo Ship Safety Radio Certificate</b> <ol style="list-style-type: none"> <li>1. 所簽發的豁免證明書數目 No. of exemption certificates issued</li> <li>2. 應其他國家機關要求而檢驗的外來船舶，以簽發無線電安全證明書 Foreign ships surveyed at the request of other national authorities for the issue of SRC</li> </ol>	<p>0</p> <p>1</p>	<p>0</p> <p>0</p>
<b>其他</b> <b>Others</b> <ol style="list-style-type: none"> <li>1. 所簽發的《海員培訓、發證和值班標準國際公約》最低安全配員證明書 STCW Minimum Safe Manning Certificate issued</li> <li>2. 對構造安全、設備安全、無線電安全證明書的監察，包括中期檢驗 Safety Construction, Equipment and Radio Certificates monitored including Intermediate Surveys</li> <li>3. 對國際載重線證明書的監察，包括定期檢驗 International Load Line Certificate monitored including periodic surveys</li> <li>4. 對國際防止油污證明書的監察 - 續期、年度/中期檢驗 International Oil Pollution Prevention Certificate monitored - renewal, annual/intermediate surveys</li> <li>5. 對新船公司所作的國際安全管理稽核 ISM audits of new shipping companies</li> <li>6. 其他檢驗 (例如合格證明書等) Other surveys (e.g. Certificates of Fitness etc)</li> </ol>	<p>1 284 <sup>(1)</sup></p> <p>1 965</p> <p>353</p> <p>453</p> <p>17</p> <p>0</p>	<p>316</p> <p>1 272</p> <p>424</p> <p>638</p> <p>24</p> <p>0</p>

表 25 – 續  
TABLE 25 – Cont'd

B. 客船安全統計數字 Passenger Ships Safety Statistics	2007	2008
<b>所管理公約客船</b> <b>Convention Passenger Ships Administered</b>		
1. 數目 Number	44	63
2. 總噸位 Gross register tonnage	20 580	41 191
<b>客船安全證明書</b> <b>Passenger and Safety Certificates</b>		
1. 客船安全證明書 - 國際航線 PSSC - International Voyage	0	0
2. 客船安全證明書/高速船安全證明書 - 內河航限 PSSC/HSCSC - River Trade Limits	HSCSC - 62	HSCSC - 81
3. 延長客船安全證明書有效期 Extensions to Passenger and Safety Certificate	0	4
4. 客船安全證明書檢驗船舶總數 Total number of vessels surveyed for P&S Certificate	62	81
5. 受檢驗的客船無線電裝置 Passenger ship radio installations surveyed	62	81
6. 所簽發的載重線證書數目 No. of Load Line Certificate issued	13	27
7. 所簽發的載重線豁免證書數目 No. of Load Line Exemption Certificate issued	14	30
8. 所簽發的國際防止油污證書及增補數目 No. of IOPP Certificate with Supplement issued	19	31
9. 所簽發的國際防止油污豁免證書數目 No. of IOPP Exemption Certificate issued	5	9
10. 所簽發的最低安全配員證書數目 No. of Minimum Safe Manning Certificate issued	5	13
11. 對船公司所作的安全管理稽核 ISM audits of shipping companies	3	4
12. 對船舶所作的安全管理稽核 ISM audits of ships	16	47
13. 所簽發的 ISM 符合證明數目 No. of ISM Document of Compliance (DOC) issued	1	2
14. 所簽發的 ISM 安全管理證明書數目 No. of ISM Safety Management Certificate (SMC) issued	1	14
15. 所簽發的臨時 ISM 安全管理證明書數目 No. of Interim ISM Safety Management Certificate (SMC) issued	5	12

表 25 – 續  
TABLE 25 – Cont'd

B. 客船安全統計數字 (續) Passenger Ships Safety Statistics (Cont'd)	2007	2008
<b>雜項檢查，圖則審核和設備</b> <b>Miscellaneous Inspection, Plans Approval and Equipment</b>		
1. 審核客船船體、機械和設備圖則 Plans examined for hull, machinery and equipment of passenger ships	952	3 537
2. 簽發檢查證明書、雜項檢驗／檢查 Certificate of Inspection issued, miscellaneous surveys/inspections	125	110

C. 港口國監督統計數字 Port State Control Statistics	2007	2008
<b>在香港特別行政區港口內進行的港口國監督檢查：</b> <b>Port State Control Inspections in the Harbour of Hong Kong Special Administrative Region:</b>		
1. 在履行身為港口國監督委員而對《東京諒解備忘錄》應有的責任下，受港口國監督檢查的個別外來船舶數目 Number of individual foreign ships inspected under the obligation to Tokyo MOU, as a member Port State of the Committee	728	763
檢查遠洋船舶數目 Number of ocean vessels inspected	668	681
檢查沿岸船舶數目 Number of coastal vessels inspected	60	82
2. 對外來船舶進行港口國監督檢查 (包括複檢) 總數 Total number of Port State Control inspections carried out for foreign ships, including re-inspections	751	781
3. 被扣留在港的低於安全標準的船舶數目 Number of sub-standard ships detained in Hong Kong	30	42

註釋： (1) 證明書簽發數目高，是因為新證明書格式取代舊有證明書。

Note: (1) The high figure was due to replacement of the original certificate by new certificate format.

資料來源： (A) 海事處船舶註冊及  
商船海員管理處  
海事處貨船安全組  
(B) 海事處客船安全組  
(C) 海事處港口國監督組

Data Sources: (A) Shipping Registry and  
Mercantile Marine Office, Marine Department  
Cargo Ships Safety Section, Marine Department  
(B) Passenger Ships Safety Section, Marine Department  
(C) Port State Control Section, Marine Department

表 26  
TABLE 26

本地船隻安全統計資料  
Local Vessels Safety Statistics

I. 船舶的檢驗和檢查統計 Statistics on Surveys and Inspections of Vessels	2007	2008
<b>A. 簽發/批註證明書/適合聲明/紀錄等給本地船隻 Certificates/Declaration/Records etc. Issued/Endorsed to Local Vessels</b> <ol style="list-style-type: none"> <li>1. 簽發/批註乾舷勘定證明書數目 No. of Freeboard Assignment Certificates Issued/Endorsed</li> <li>2. 簽發安全設備檢驗紀錄數目 No. of Survey Record of Safety Equipment Issued</li> <li>3. 簽發/批註載重線證明書數目 No. of Load Line Certificate Issued/Endorsed</li> <li>4. 簽發噸位丈量記錄數目 No. of Record of Tonnage Measurement Issued</li> <li>5. 簽發散裝有毒液體物質的防污證明書數目 No. of Pollution Prevention Certificates for the Carriage of Noxious Liquid Substances in Bulk Issued</li> <li>6. 簽發適合運載危險品聲明數目 No. of Declaration of Fitness for the Carriage of Dangerous Goods Issued</li> <li>7. 簽發香港防止油類污染證明書數目 No. of Hong Kong Oil Pollution Prevention Certificates Issued</li> <li>8. 簽發驗船證明書數給本地船隻數目 No. of Certificate of Survey Issued for Local Vessels               <ul style="list-style-type: none"> <li>第 I 類 Class I</li> <li>第 II 類 Class II</li> <li>第 III 類 Class III</li> <li>第 IV 類 Class IV</li> </ul> </li> </ol>		
<b>總計 Total</b>	<b>4 417</b>	<b>3 966</b>
<b>B. 審批圖則/文件 Plans/Documents Examined</b> <ol style="list-style-type: none"> <li>1. 船隻傾斜測試及穩性確定數目 No. of Vessels Inclining Tested and Stability Information Assessed</li> <li>2. 審核本地船隻的船體，機械和設備圖則數目 No. of Plans of Hull, Machinery and Equipment Examined for Local Vessels</li> </ol>		
<b>總計 Total</b>	<b>4 042</b>	<b>5 353</b>

表 26 – 續  
TABLE 26 – Cont'd

I. 船舶的檢驗和檢查統計 (續) Statistics on Surveys and Inspections of Vessels (Cont'd)	2007	2008
<b>C. 檢驗本地船隻隻數 (包括新船、現有船隻及抽查船隻等)</b> <b>Local Vessels Inspected (New, Existing and Spot-check Vessels etc.)</b> <ol style="list-style-type: none"> <li>1. 執行其他政府部門要求檢查的船隻數目 No. of Inspections of Vessels for other Government Departments</li> <li>2. 完成首次檢驗而新領牌的船隻數目 No. of Newly Licensed Vessels after completed Initial Survey</li> <li>3. 在本港檢驗本地船隻的數目 No. of Local Vessels Inspected Locally</li> </ol>	   178 38 3 500	   137 23 3 075
<b>總計</b> <b>Total</b>	<b>3 716</b>	<b>3 235</b>
<b>D. 檢驗本地船隻次數 (包括新船、現有船隻及抽查船隻等)</b> <b>Inspection Visits Made to Local Vessels (New, Existing and Spot-check Vessels etc.)</b> <ol style="list-style-type: none"> <li>1. 檢驗碰撞後破損的本地船隻數目 No. of Inspection surveys of Damaged Local Vessels after Collision</li> <li>2. 抽查及複驗本地船隻數目 Number of Spot Checks and Audit Checks on Local Vessels</li> <li>3. 海外檢驗本地船隻次數 No. of Overseas visits for Inspection of Local Vessels</li> <li>4. 本地船隻在本港首次及定期檢查次數 No. of Initial and Periodical Inspection Visits Made Locally to Local Vessels</li> </ol>	    13 162 115 4 483	    12 108 108 4 151
<b>總計</b> <b>Total</b>	<b>4 773</b>	<b>4 379</b>
<b>E. 舉辦安全講座及研討會</b> <b>Talks and Seminars Conducted</b>	<b>37</b>	<b>38</b>

資料來源： 海事處本地船舶安全組

Data Source: Local Vessels Safety Section, Marine Department

表 26 – 續  
TABLE 26 – Cont'd

II. 檢查正在修理、拆卸或從事裝卸貨物的船舶、調查海上工業意外事故 Inspections of Vessels Undergoing Repair or Demolition or Engaged in Cargo Handling, Investigations of Marine Industrial Accidents	2007	2008
A. 海上貨櫃檢查 Marine Containers Inspected	7 088	6 704
B. 海事工業安全檢查 (不包括海上貨櫃的檢查數目) Marine Industrial Safety Inspections (excluding number of marine containers inspected)		
1. 檢查正在修理的船舶 Inspections of Vessels Undergoing Repair	2 022	1 670
2. 檢查海事工程船舶 Inspections of Vessels Engaged in Marine Construction	106	51
3. 檢查遠洋船裝卸貨物工具 Cargo Gear Inspections on Ocean-going Vessels	280	216
4. 檢查遠洋船裝卸貨物 Stevedoring Inspections on Ocean-going Vessels	3 899	2 934
5. 檢查駁船裝卸貨物工具 Cargo Gear Inspections on Lighters	4 312	3 686
6. 檢查駁船裝卸貨物 Stevedoring Inspections on Lighters	1 247	1 307
<b>總計</b> <b>Total</b>	<b>11 866</b>	<b>9 864</b>
C. 海事工業意外的調查及查詢數目 Marine Industrial Accidents Investigated/Inquired		
1. 調查致命的非海事工業意外 Non-marine Industrial Fatal Accidents Investigated	0	2
2. 調查致命的海事工業意外 Marine Industrial Fatal Accidents Investigated	4	2
3. 調查嚴重意外 Serious Accidents Investigated	15	8
4. 調查嚴重意外 (無傷亡) Serious Incidents (No Casualty) Investigated	1	0
5. 查詢非嚴重意外 Non-serious Accidents Inquired	295	243
<b>總計</b> <b>Total</b>	<b>315</b>	<b>255</b>

表 26 – 續  
TABLE 26 – Cont'd

II. 檢查正在修理、拆卸或從事裝卸貨物的船舶、調查海上工業意外事故 (續) Inspections of Vessels Undergoing Repair or Demolition or Engaged in Cargo Handling, Investigations of Marine Industrial Accidents (Cont'd)	2007	2008
<b>D. 發生海事工業意外的數目</b> <b>Marine Industrial Accidents Occurred</b> <ol style="list-style-type: none"> <li>1. 修船意外總數 Total Ship Repair Accidents</li> <li>2. 裝卸貨物意外總數 Total Cargo Handling Accidents</li> <li>3. 海事工程意外總數 Total Marine Construction Accidents</li> </ol>		
<b>總計</b> <b>Total</b>	<b>350</b>	<b>292</b>
<b>E. 簽發修船許可證/轉介檢控小組的個案/發出警告信</b> <b>Letters of Permission to Undertake Repairs Issued/Cases Referred to Prosecutions Unit/ Warning Letters Issued</b> <ol style="list-style-type: none"> <li>1. 簽發修船許可證 Letters of Permission to Undertake Repairs Issued</li> <li>2. 轉介檢控小組的個案 Cases Referred to Prosecutions Unit</li> <li>3. 發出警告信數 Warning Letters Issued</li> </ol>		
<b>總計</b> <b>Total</b>	<b>5 644</b>	<b>5 129</b>
<b>F. 海事工業安全的宣傳及教育</b> <b>Promotion and Education on Marine Industrial Safety</b> <ol style="list-style-type: none"> <li>1. 發出安全指令 Safety Directions Issued</li> <li>2. 出版或修訂的安全小冊子/單張/海報/貼紙數目 Number of Safety Pamphlets/Leaflets/Posters/Stickers Published or Revised</li> <li>3. 出版或修訂的安全指南數目 Number of Safety Guides/Codes of Practice Published or Revised</li> <li>4. 安全講座及研討會的舉辦數目 Number of Safety Talks and Seminars Conducted</li> </ol>		
<b>總計</b> <b>Total</b>	<b>49</b>	<b>24</b>

資料來源： 海事處海事工業安全組  
Data Source: Marine Industrial Safety Section, Marine Department

表 26 – 續  
TABLE 26 – Cont'd

III. 香港註冊船舶的損失數目 <sup>(1)</sup> Loss of Vessels Registered in Hong Kong <sup>(1)</sup>						
船舶類型 Class of Vessel	該類船隻數目 Number of Vessel		損失船隻數目 Number Lost		損失船隻百分率 Percentage Lost	
	2007	2008	2007	2008	2007	2008
公約船舶 (香港註冊) Convention (HK Registered)	1 012	1 135	1	1	0.1 %	0.09%

註釋： (1) 指因遇險而導致損失的船舶。  
Note: (1) Refers to loss of vessels due to casualty or accident.

資料來源： 海事處船舶註冊及商船海員管理處  
Data Source: Shipping Registry and Mercantile Marine Office, Marine Department

IV. 2008 年海上意外事故統計 Marine Accidents in 2008									
意外事故類別 Type of Accident	香港水域範圍以內 <sup>(1)</sup> Within Hong Kong Waters <sup>(1)</sup>					香港水域範圍以外 <sup>(2)</sup> Outside Hong Kong Waters <sup>(2)</sup>			
	宗數 No. of Case	死亡人數 Persons Killed	受傷人數 Persons Injured	失蹤人數 Persons Missing	宗數 No. of Case	死亡人數 Persons Killed	受傷人數 Persons Injured	失蹤人數 Persons Missing	
碰撞 Collision	163	18	34	0	24	5	147	1	
擱淺/ 觸底 Stranding/ Striking	18	0	1	0	3	0	0	0	
沉沒/ 入水 Foundering/ Sinking	27	0	2	0	0	0	0	0	
火警/ 爆炸 Fire/ Explosion	19	0	0	0	1	0	0	0	
翻沉/ 傾斜 Capsized/ Listing	10	0	5	0	0	0	0	0	
接觸 Contact	43	0	4	0	12	0	0	0	
其他 Others	43	0	0	0	53	0	0	0	
<b>總計 Total</b>	<b>323</b>	<b>18</b>	<b>46</b>	<b>0</b>	<b>93</b>	<b>5</b>	<b>147</b>	<b>1</b>	

註釋： (1) 包括在香港水域範圍以內所有船舶的意外及傷亡數字 (如香港註冊及外國註冊船舶、本地領牌船隻、內河船隻、沿海船隻、政府船舶等等)。

Notes: (1) Including accidents and casualties figures of all vessels within Hong Kong waters (such as Hong Kong registered and foreign registered vessels, local licensed vessels, river trade vessels, coastal vessels, government launches, etc.).

(2) 包括在香港水域範圍以外所有香港註冊船舶及本地領牌船隻的意外及傷亡數字。

(2) Including accidents and casualties figures outside Hong Kong waters for Hong Kong registered vessels and local licensed vessels.

資料來源： 海事處海事意外調查組  
Data Source: Marine Accident Investigation Section, Marine Department



表 26 – 續  
TABLE 26 – Cont'd

V. 海上意外事故調查 Marine Accident Investigation		2007	2008
調查意外事故 《船舶及港口管制條例》	Accidents Investigated (Shipping and Port Control Ordinance)	29	23
初步研訊 《商船條例》	Preliminary Inquiries (Merchant Shipping Ordinance)	2	1
領港研訊 《領港條例》	Pilotage Inquiries (Pilotage Ordinance)	0	0
海事法庭	Marine Courts	0	0
調查委員會	Board of Inquiry	0	0
對調查委員會裁決提出上訴	Appeal against the Decision by Board of Inquiry	0	0

資料來源： 海事處海事意外調查組

Data Source: Marine Accident Investigation Section, Marine Department

表 27  
TABLE 27

海員發證、註冊和僱用統計資料  
Seafarers' Certification, Registration and Employment Statistics

A. 遠洋合格證書 Seagoing Certificates of Competency	2007		2008	
	申請人數 Number of Application	及格人數 Number of Success	申請人數 Number of Application	及格人數 Number of Success
<b>1. 商船船長及高級船員 Master Mariner and Deck Officer</b>				
一級甲板高級船員 (商船船長) Class 1 (Master Mariner)				
筆試 Written Examination	1	1	3	0
口試 Oral Examination	6	5	2	2
其他 Other Services	25	25	17	17
二級甲板高級船員 Deck Officer Class 2				
筆試 Written Examination	0	0	3	1
口試 Oral Examination	1	1	1	0
訊號 Signal	0	0	0	0
其他 Other Services	7	7	6	6
三級甲板高級船員 Deck Officer Class 3				
筆試 Written Examination	17	10	12	5
口試 Oral Examination	18	15	8	6
訊號 Signal	15	5	9	5
其他 Other Services	1	1	6	6
<b>小計 Sub-total</b>	<b>91</b>	<b>70</b>	<b>67</b>	<b>48</b>
<b>2. 輪機師 Marine Engineer Officer</b>				
一級輪機師 Marine Engineer Officer – Class 1				
甲部 Part A	1	0	2	0
乙部 Part B	2	0	0	0
其他 Other Services	19	19	10	10
二級輪機師 Marine Engineer Officer - Class 2				
甲部 Part A	10	1	13	1
乙部 Part B	5	0	6	1
其他 Other Services	4	4	1	1
三級輪機師 Marine Engineer Officer - Class 3				
筆試 Written Examination	15	9	10	3
其他 Other Services	34	34	52	52
<b>小計 Sub-total</b>	<b>90</b>	<b>67</b>	<b>94</b>	<b>68</b>
<b>總計 Total</b>	<b>181</b>	<b>137</b>	<b>161</b>	<b>116</b>

表 27 – 續  
TABLE 27 – Cont'd

B. 內河航行合格證書 River Trade Certificates of Competency	2007		2008	
	申請人數 Number of Application	及格人數 Number of Success	申請人數 Number of Application	及格人數 Number of Success
<b>1. 甲板高級船員 Deck Officer</b>				
一級甲板高級船員 Deck Officer Class 1				
筆試 Written Examination	0	0	4	1
口試 Oral Examination	13	8	10	6
訊號 Signal	0	0	0	0
其他 Other Services	23	23	55	55
二級甲板高級船員 Deck Officer Class 2				
筆試 Written Examination	2	0	5	0
口試 Oral Examination	1	1	3	3
訊號 Signal	0	0	0	0
其他 Other Services	11	11	56	56
三級甲板高級船員 Deck Officer Class 3				
筆試 Written Examination	28	11	75	25
口試 Oral Examination	22	8	54	32
訊號 Signal	41	18	96	34
其他 Other Services	9	9	53	53
<b>小計 Sub-total</b>	<b>150</b>	<b>89</b>	<b>411</b>	<b>265</b>
<b>2. 輪機師 Marine Engineer Officer</b>				
一級輪機師 Marine Engineer Officer - Class 1				
其他 Other Services	10	10	22	22
二級輪機師 Marine Engineer Officer - Class 2				
其他 Other Services	17	17	36	36
三級輪機師 Marine Engineer Officer - Class 3				
其他 Other Services	5	5	22	22
<b>小計 Sub-total</b>	<b>64</b>	<b>41</b>	<b>168</b>	<b>110</b>
<b>總計 Total</b>	<b>214</b>	<b>130</b>	<b>579</b>	<b>375</b>

表 27 – 續  
TABLE 27 – Cont'd

C.1 本地合格證書 <sup>(1)</sup> Local Certificates of Competency <sup>(1)</sup>	2007		2008	
	申請人數 Number of Application	及格人數 Number of Success	申請人數 Number of Application	及格人數 Number of Success
<b>1. 船長 Coxswain</b>				
船長一級 Coxswain Grade 1	5	5	19	14
其它 Other Services	83	83	68	68
船長二級 Coxswain Grade 2	80	0	171	10
其它 Other Services	876	876	283	283
船長三級 Coxswain Grade 3	259	93	603	199
其它 Other Services	986	800	399	369
<b>小計 Sub-total</b>	<b>2 289</b>	<b>1 857</b>	<b>1 543</b>	<b>943</b>
<b>2. 輪機操作員 Engine Operator</b>				
輪機操作員一級 Engine Operator Grade 1	0	0	0	0
其它 Other Services	137	137	94	94
輪機操作員二級 Engine Operator Grade 2	7	0	13	5
其它 Other Services	8	8	11	11
輪機操作員三級 Engine Operator Grade 3	143	39	335	159
其它 Other Services	756	710	337	317
<b>小計 Sub-total</b>	<b>1 051</b>	<b>894</b>	<b>790</b>	<b>586</b>
<b>總計 Total</b>	<b>3 340</b>	<b>2 751</b>	<b>2 333</b>	<b>1 529</b>

C.2 遊樂船隻操作人合格證明書 <sup>(1)</sup> Pleasure Vessel Operator Certificate of Competency <sup>(1)</sup>	2007		2008	
	申請人數 Number of Application	及格人數 Number of Success	申請人數 Number of Application	及格人數 Number of Success
遊樂船隻操作人一級 Pleasure Vessel Operator Grade 1	50	26	71	43
其它 Other Services	501	501	547	547
遊樂船隻操作人二級 Pleasure Vessel Operator Grade 2	2 845	1 229	3 711	1 721
其它 Other Services	933	932	392	392
<b>總計 Total</b>	<b>4 329</b>	<b>2 688</b>	<b>4 721</b>	<b>2 703</b>

註釋： (1) 其他服務包括有關證書批註、豁免、重新生效等事宜的申請。  
由 2007 年 3 月 1 日起根據《商船（本地船隻）條例》（第 548 章）簽發的證書。

Note: (1) Other services include applications for endorsement, exemption and revalidation etc.  
Certificates issued under Cap. 548 Merchant Shipping (Local Vessels) Ordinance from 01.03.2007.

表 27 – 續  
TABLE 27 – Cont'd

D. 部門考試 Departmental Examinations	2007		2008	
	考試人數 Examined	及格人數 Passed	考試人數 Examined	及格人數 Passed
一級本地船長 Coxswain Grade 1	0	0	0	0
二級本地船長 Coxswain Grade 2	65	17	60	11
三級本地船長 Coxswain Grade 3	33	8	21	8
一級輪機操作員 Engine Operator Grade 1	0	0	0	0
二級輪機操作員 Engine Operator Grade 2	16	6	30	14
三級輪機操作員 Engine Operator Grade 3	28	3	44	8
<b>總計 Total</b>	<b>142</b>	<b>34</b>	<b>155</b>	<b>41</b>

E. 其它考試/評定 Other Examinations/Assessments	2007		2008	
	申請人數 Number of Application	及格人數 Number of Success	申請人數 Number of Application	及格人數 Number of Success
救生艇筏熟練操作證書 Proficiency in Survival Craft Certificate	0	0	2	2
高級水手/水手證書 AB/EDH Certificate	0	0	1	1
船舶保安主任證書 Certificate of Proficiency of Ship Security Officer	197	197	1 762	1 762
類型級別證書 (考試、重新生效及夜航批准) Type Rating Certificate (Examination, Revalidation and Night Service Approval)	599	598	720	716
香港執照 Hong Kong Licence	10 833	10 833	11 358	11 358
本地豁免 Local Exemption	13	13	5	5
<b>總計 Total</b>	<b>11 642</b>	<b>11 641</b>	<b>13 848</b>	<b>13 844</b>

資料來源： 海事處海員發證組  
Data Source: Seafarers' Certification Section, MD

表 27 – 續  
TABLE 27 – Cont'd

F. 截至 2008 年 12 月 31 日為止的海員註冊人數 Seafarer's Registration as at 31.12.2008			
根據第478章註冊的海員 Seafarers Registered Under Cap.478	第一部 Part I	第二部 Part II	合計 Total
		3 662	1 212

G. 2008 年所簽發的僱用登記簿數目 Employment Registration Books Issued, 2008		
續發簿	Subsequent Books	7
補發簿	Replacement Books	4
新海員簿	New Entrants Books	350
<b>總計</b>	<b>Total</b>	<b>361</b>

H. 2008 年海員就業統計數字 Seafarers Employment Statistics, 2008				
期間 Period	僱用海員方式 Seafarers Employed Through			
	核准公司名冊 Permitted C.R.	總名冊 G.R.	緊急僱用/重新僱用等 Emergency/Re-employment, etc.	總計 Total
2008年第一季 1st Quarter 2008	148	3	-	151
2008年第二季 2nd Quarter 2008	58	1	-	59
2008年第三季 3rd Quarter 2008	147	4	675	826
2008年第四季 4th Quarter 2008	74	6	226	306
<b>總計 Total</b>	<b>427</b>	<b>14</b>	<b>901</b>	<b>1 342</b>

表 27 – 續  
TABLE 27 – Cont'd

<b>I. 船公司及職位統計數字 Companies and Posts Statistics</b>	
截至2008年12月31日為止在商船海員管理處登記僱用本港註冊海員的船公司數目 Shipping companies listed with M. M. Office to employ Hong Kong registered seafarers as at 31.12.2008	20
2008年按船公司所交周年報表而編製的本港海員就業職位 Posts filled by Hong Kong seafarers as compiled from annual returns submitted by shipping companies, 2008	1 747

<b>J. 2008年訂立和終結的香港註冊船舶船員協議條款 Crew Agreement of Hong Kong Registered Ships Opened and Closed, 2008</b>				
	所訂立的協議 Agreements Opened		終結的協議 Agreements Closed	
	在香港境內 In Hong Kong	在香港境外 Outside Hong Kong	在香港境內 In Hong Kong	在香港境外 Outside Hong Kong
船員協議條款數目 No. of agreements	60	879	56	825
<b>總計 Total</b>	<b>939</b>		<b>881</b>	

<b>K. 香港註冊船舶僱用和解職的海員人次<sup>(1)</sup> Number of Employment and Discharge of Seafarers by Hong Kong Registered Ships<sup>(1)</sup></b>			
	2006	2007	2008
所僱用的海員人次 No. of employment of seafarers	43 312	46 661	50 485
解職的海員人次 No. of discharge of seafarers	42 012	44 096	49 077

註釋： (1) 數字包括在香港以外地方註冊的海員。

Note: (1) The figures include seafarers registered outside Hong Kong.

資料來源： (A) – (E) 海事處海員發證組  
(F) – (K) 海事處註冊及商船海員管理處

Data Sources: (A) – (E) Seafarers' Certification Section, Marine Department  
(F) – (K) Shipping Registry and Mercantile Marine Office, Marine Department

表 28  
TABLE 28

香港註冊船舶統計資料  
Statistics on Ships Registered in Hong Kong

A. 2007 和 2008 年年底的船舶數目和噸位  
Number of Ships and Tonnage as at end of 2007 and 2008

	船舶數目 No. of ships	淨噸位 <sup>(1)</sup> Net tonnage <sup>(1)</sup>	總噸位 <sup>(1)</sup> Gross tonnage <sup>(1)</sup>
(i) 2007 年 12 月 31 日船舶註冊概況 <sup>(2)</sup> On register as at 31.12.2007 <sup>(2)</sup>	1 227	20 743 986	36 315 538
(ii) 2008 年註冊的船舶 Ships Registered in the year of 2008	263	4 087 092	8 293 688
(iii) 2008 年取消註冊的船舶 Ships De-registered in the year of 2008	129	2 537 685	4 635 015
(iv) 2008 年 12 月 31 日船舶註冊概況 On register as at 31.12.2008	1 361	22 147 056	39 642 972

註釋： (1) 淨噸位及總噸位以每單位 100 立方呎計算。  
(2) 因部分註冊船舶於 2007 年更改噸位，故 (i) + (ii) - (iii) 並不等於 (iv)。

Notes: (1) Net and gross tonnages are in units of 100 cubic feet.  
(2) Due to alteration of tonnages of some ships already on register in 2007, (i) + (ii) - (iii) is not equal to (iv).

B. 按總噸位分析於 2008 年年底在香港註冊的船舶數目  
Ships Registered in Hong Kong by Gross Tonnage Distribution, as at end of 2008

總噸位分配 Gross Tonnage Distribution	船舶數目 No. of Ships
500 以下 Under 500	139
500 - 999	61
1 000 - 1 999	30
2 000 - 2 999	7
3 000 - 3 999	25
4 000 - 4 999	30
5 000 - 9 999	141
10 000 - 14 999	66
15 000 - 19 999	159
20 000 - 24 999	60
25 000 - 29 999	190
30 000 - 34 999	67
35 000 - 39 999	122
40 000 - 44 999	54
45 000 - 49 999	14
50 000 - 59 999	35
60 000 - 69 999	23
70 000 - 79 999	18
80 000 - 89 999	51
90 000 - 99 999	19
100 000 - 149 999	27
150 000 及以上 - 150 000 and above	23
<b>總計 Total</b>	<b>1 361</b>



表 28 – 續  
TABLE 28 – Cont'd

C. 按船隻種類分析於 2008 年度在香港註冊及取消註冊的船舶數目  
Ship Registered and De-registered in Hong Kong by Ship Type during 2008

船隻種類 Ship Type	註冊船舶 Ship Registered		取消註冊船舶 Ship De-registered	
	船舶數目 No. of Ships	總噸位 Gross Tonnage	船舶數目 No. of Ships	總噸位 Gross Tonnage
散裝貨船 Bulk Carrier	80	2 746 823	52	1 933 852
化學品船 Chemical Tanker	34	758 643	2	8 287
集裝箱船 Container	42	1 224 322	16	287 263
氣體運輸船 Gas Carrier	3	199 235	1	4 227
雜貨船 General Cargo Ship	33	342 128	12	114 140
高速船 High Speed Craft	10	8 730	-	-
躉船 Lighter and Barge	9	229 991	3	25 649
油輪 Oil Tanker	34	1 532 501	27	1 986 198
其他運油船 Other Tanker	-	-	1	28 059
沙石/雜貨/ 油輪 Ore/Bulk/ Oil Carrier	9	1 246 982	7	233 858
滾裝卸式船 Roll On/Roll Off	-	-	1	12 165
拖船 Tug	5	4 241	3	1 123
帆船/遊艇 Yacht	4	92	4	194
<b>總計</b> <b>Total</b>	<b>263</b>	<b>8 293 688</b>	<b>129</b>	<b>4 635 015</b>

資料來源： 海事處船舶註冊處  
Data Source: Shipping Registry, Marine Department

表 29  
TABLE 29

政府船隊統計資料  
Government Fleet Statistics

	項目	Items	2007	2008
1.	開支預算總額 <sup>(1)</sup> (百萬元)	Total expenditure estimate <sup>(1)</sup> (\$M)	381.3 <sup>(2)</sup>	398.9 <sup>(3)</sup>
2.	截至 12 月 31 日的政府船隊科員工總數 (包括船員)	Total no. of GFD staff (including crew) as at 31 <sup>st</sup> December	550	534
3.	(i) 建成及交收的政府新船	(i) Government new vessels built and delivered	28	40
	(ii) 建造中的政府新船	(ii) Government new vessels under construction	26	21
	(iii) 已完成的政府新船計劃	(ii) Government new vessel projects completed	6 <sup>(2)</sup>	7
	(iv) 正進行中的政府新船計劃	(ii) Government new vessel projects in progress	11 <sup>(2)</sup>	10
4.	新船招標/報價	Tenders/Quotations called for new vessels	10	7
5.	新船合約	Contracts awarded for new vessels	8	7
6.	已完成的合約及購買規格書	Contracts and procurements specifications completed	18	14
7.	(i) 政府船舶總數	(i) Total number of vessels	744	766
	a. 大型機動船舶	a. major mechanized vessels	109 <sup>(2)</sup>	106
	b. 大型高速船	b. high speed craft (large-type)	15 <sup>(2)</sup>	15
	c. 其他雜類型船舶	b. other miscellaneous-class vessels	620 <sup>(2)</sup>	645
	(ii) 配備海事處人員的政府船舶	(ii) Government craft manned by Marine Department (MD)	52	47
	(iii) 海事處可供調配船員的時數率 (%)	(iii) MD crew staff time available for deployment (%)	88.7	88.5
	(iv) 已處理報廢的政府船舶	(iii) Government craft disposed	3 <sup>(2)</sup>	26
8.	(i) 大型機動船舶及高速船的可提供使用率	(i) Availability of major mechanized vessels and high speed craft (large-type) (%)	87.8 <sup>(2)</sup>	87.5 <sup>(3)</sup>
	(ii) 大型機動船舶及高速船的平均數目	(ii) Average number of major mechanized vessels and high speed craft (large-type)	121.58 <sup>(2)</sup>	119.34 <sup>(3)</sup>
	(iii) 船舶維修後首次試航成功率	(iii) Vessel seatrial successful rate in first attempt after repair maintenance service (%)	88.0	88.6
	(iv) 政府船隊維修保養服務使用者滿意率 (%)	(iv) Users satisfactory level on Government fleet repair maintenance service (%)	98.40	98.92
9.	大型機動船舶及高速船(包括它們的機動子艇)保養費總額 <sup>(1)</sup> (百萬元)	Total maintenance cost of major mechanized vessels and high speed craft (large-type) (including their mechanized daughter boats) <sup>(1)</sup> (\$M)	133.3 <sup>(2)</sup>	123.0 <sup>(3)</sup>
10.	大型機動船舶及高速船(包括它們的機動子艇)平均保養費 <sup>(1)</sup> (百萬元)	Average maintenance cost of major mechanized vessels and high speed craft (large-type) (including their mechanized daughter boats) <sup>(1)</sup> (\$M)	1.096 <sup>(2)</sup>	1.031 <sup>(3)</sup>
11.	(i) 船舶維修定期保養合約安排總數	(i) Total number of vessel maintenance term contract (TC) arrangements	41	42
	a. 根據合約保養的船舶的數目	a. Number of vessels maintained under TC	105	116
	b. 根據合約保養的主機的數目	b. Number of main engines repaired under TC	214	231
	(ii) 採購機械零件的定期合約數目	(ii) Number of TC for procurement of machinery spare parts	10	15
12.	配備海事處人員的政府船舶肇事個案	Accidents involving Government Craft manned by MD		
	(i) 肇事政府船舶個案數目	(i) Number of government vessels involved	14	5
	(ii) 工傷意外傷亡數目	(ii) Number of casualties in industrial accidents		
	a. 船塢員工	a. Dockyard staff	1	3
	b. 船員	b. Crew	15	6
	(iii) 因工傷損失人-日總數	(iii) Total Number of man-days lost		
	a. 船塢員工	a. Dockyard staff	81	394
	b. 船員	b. Crew	88	127
13.	參加職業安全及健康課程的政府船塢人員人數	Number of Attendees of Government Dockyard to Occupational Safety and Health (OSH) training courses		
	(i) 職業安全健康局舉辦課程	(i) Organized by the OSH Council	4	34
	(ii) 政府船隊科工業安全組舉辦的課程	(ii) Organized by the Industrial Safety Section, GFD	134	84
	(iii) 其他職安健課程	(iii) Other OSH courses	176	53

註釋： (1) 指財政年度內的數字 (由本年四月一日至下年三月三十一日)。

Notes: (1) Refer to financial year figures (i.e. from 1 April of current year to 31 March of next year).

(2) 修定數字

(2) Revised Figures

(3) 估計數字

(3) Estimated figures

表 30  
TABLE 30

政府船舶所屬部門及可用率情況 (2008 年 12 月 31 日)  
Departmental Ownership and Availabilities of Government Vessels (as at 31 December 2008)

調配 Deployment	機動子艇及 泳灘艇 Mechanized Daughter Boats & Beach Craft	浮橋物/泳 灘浮台及 浮筏 Floating Bridge Structure/ Beach Platform & Rafts	機動及 非機動 充氣式 橡皮艇 Mechanized and Non- mechanized Inflatable Boats	駁船 Lighters	小型 機動船 及小艇 Minor Mechanized Vessels & Dinghies	大型機動 船舶 Major Mechanized Vessels	大型 高速船 High Speed Craft (large type)	中型 高速船 High Speed Craft (medium type)	總計 Total	大型 機動船及 高速船 平均 可提供 使用率 Average Availability of Major Mechanized Vessels & High Speed Craft (large-type) (%)
漁農自然護理署 AFCD	-	-	4	-	10	3	-	8	25	88.98
醫療輔助隊 AMS	-	-	1	-	-	-	-	-	1	-
民眾安全服務處 CAS	-	-	12	-	2	-	-	-	14	-
土木工程拓展署 CEDD	-	-	-	-	-	3	-	-	3	91.53
懲教署 CSD	-	-	-	-	-	2	-	-	2	91.26
香港海關 C&ED	5	-	3	-	-	7	4	2	21	85.82
環境保護署 EPD	-	-	1	-	-	1	-	-	2	81.76
消防處 FSD	9	1	13	1	3	9	-	2	38	87.90
衛生署 DH	-	-	-	-	-	1	-	-	1	92.21
香港警務處 HKPF	43	8	15	6	9	44	11	39	175	86.90
入境事務處 Imm D	-	-	-	-	-	7	-	-	7	85.23
康樂及文化事務署 LCSD	119	286	-	-	-	-	-	-	405	-
海事處 MD	2	-	-	23	6	29	-	5	65	88.96
水務署 WSD	-	-	3	-	4	-	-	-	7	-
<b>總計 Total</b>	<b>178</b>	<b>295</b>	<b>52</b>	<b>30</b>	<b>34</b>	<b>106</b>	<b>15</b>	<b>56</b>	<b>766</b>	<b>87.50</b>

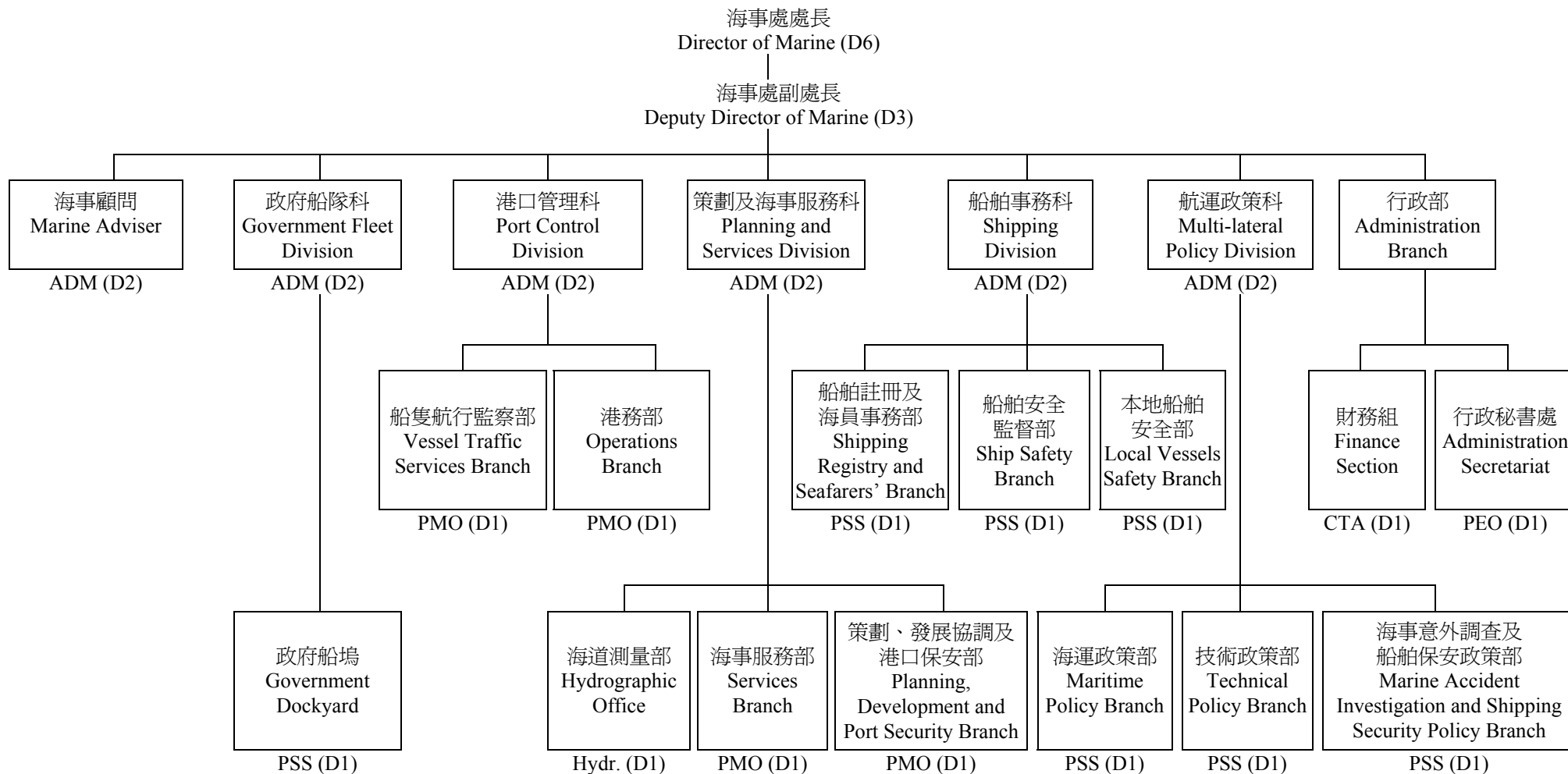
資料來源： 海事處政府船隊科  
Data Source: Government Fleet Division, MD

附錄

Appendices

附錄 A  
APPENDIX A

海事處組織架構圖  
Marine Department Organization Chart



- |         |               |                              |                     |                                 |
|---------|---------------|------------------------------|---------------------|---------------------------------|
| 圖例：     | ADM = 海事處助理處長 | Assistant Director of Marine | PEO = 首席行政主任        | Principal Executive Officer     |
| Legend: | PMO = 首席海事主任  | Principal Marine Officer     | CTA = 總庫務會計師        | Chief Treasury Accountant       |
|         | PSS = 首席驗船主任  | Principal Surveyor of Ships  | D6 = 首長薪級第六點 (如此類推) | Directorate Level 6 (and so on) |
|         | Hydr. = 海道測量師 | Hydrographer                 |                     |                                 |

**附錄 B**  
**APPENDIX B**

**海事處的編制和實際員額 (截至 2008 年 12 月 31 日)**  
**Marine Department Establishment and Strength (as at 31 December 2008)**

<b>首長級人員</b> <b>Directorate Officers</b>		<b>編制</b> <b>Establishment</b>	<b>實際員額</b> <b>Strength</b>
海事處處長	Director of Marine (D6)	1	1
海事處副處長	Deputy Director of Marine (D3)	1	1
海事處助理處長	Assistant Director of Marine (D2)	6	5
首席海事主任	Principal Marine Officer (D1)	4	4
首席驗船主任	Principal Surveyor of Ships (D1)	7	7
首席行政主任	Principal Executive Officer (D1)	1	1
總庫務會計師	Chief Treasury Accountant (D1)	1	1
海道測量師	Hydrographer (D1)	1	1
<b>部門職系</b> <b>Departmental Grade</b>			
高級海事主任	Senior Marine Officer	18	17
海事主任	Marine Officer	39	33
海事監督	Marine Controller	13	13
助理海事監督	Assistant Marine Controller	42	40
高級船舶安全主任	Senior Shipping Safety Officer	1	1
船舶安全主任	Shipping Safety Officer	7 +1 <sup>♦</sup>	4
高級驗船主任	Senior Surveyor of Ships	16 +1 <sup>♦</sup>	17
驗船主任	Surveyor of Ships	28	25
高級助理船務主任	Senior Assistant Shipping Master	22 +1 <sup>♦</sup>	18
助理船務主任	Assistant Shipping Master	2	1
一級海事督察	Marine Inspector I	82 +3 <sup>♦</sup>	78
二級海事督察	Marine Inspector II	109	91
輔航設備監督	Superintendent of Aids to Navigation	1	1
助理輔航設備監督	Assistant Superintendent of Aids to Navigation	2	2
總驗船督察	Chief Ship Inspector	2	2
高級驗船督察	Senior Ship Inspector	10	9
驗船督察	Ship Inspector	23	19
助理驗船督察	Assistant Ship Inspector	1	0

附錄 B - 續  
APPENDIX B - Cont'd

部門職系 Departmental Grade		編制 Establishment	實際員額 Strength
小輪船員督導員	Launch Crew Supervisor	3	3
高級小輪船長	Senior Launch Master	65 +3 <sup>♦</sup>	59
小輪船長	Launch Master	49 +1 <sup>♦</sup>	45
小輪助理員	Launch Assistant	231 +1 <sup>♦</sup>	219
高級小輪大偈	Senior Launch Mechanic	1 +1 <sup>♦</sup>	1
小輪大偈	Launch Mechanic	1	1
海事工業安全督察	Marine Industrial Safety Inspector	8	7
測量服務員	Surveyor Attendant	1	0
<b>一般職系</b> <b>General Grade</b>			
高級統計師	Senior Statistician	1	1
一級統計主任	Statistical Officer I	1	1
二級統計主任/ 見習統計主任	Statistical Officer II/ Student Statistical Officer	3	3
系統經理	Systems Manager	2	2
一級系統分析/ 程序編製主任	Analyst/Programmer I	4	3
二級系統分析/ 程序編製主任	Analyst/Programmer II	2	3
高級庫務會計師	Senior Treasury Accountant	1	1
庫務會計師	Treasury Accountant	3	3
高級會計主任	Senior Accounting Officer	1	1
一級會計主任	Accounting Officer I	1	1
二級會計主任	Accounting Officer II	3	3
總行政主任	Chief Executive Officer	1	1
高級行政主任	Senior Executive Officer	1	1
一級行政主任	Executive Officer I	7	5
二級行政主任	Executive Officer II	2	3
高級法定語文主任	Senior Official Languages Officer	1	0
一級法定語文主任	Official Languages Officer I	2	3
二級法定語文主任	Official Languages Officer II	2	2

附錄 B - 續  
APPENDIX B - Cont'd

一般職系 General Grade		編制 Establishment	實際員額 Strength
高級電子工程師	Senior Electronics Engineer	1	1
電子工程師/ 助理電子工程師	Electronics Engineer/ Assistant Electronics Engineer	2	2
土地測量師/ 助理土地測量師	Land Surveyor/ Assistant Land Surveyor	2	2
電子督察	Electronics Inspector	1	1
助理空氣調節督察	Assistant Air-Conditioning Inspector	1	1
首席技術主任 (製圖)	Principal Technical Officer (Cartographic)	1	1
高級技術主任 (製圖)	Senior Technical Officer (Cartographic)	2	2
技術主任 (製圖)/ 見習技術主任 (製圖)	Technical Officer (Cartographic)/ Technical Officer Trainee (Cartographer)	5	5
高級文書主任	Senior Clerical Officer	6	5
文書主任	Clerical Officer	28	26
助理文書主任	Assistant Clerical Officer	67 +1*	65
文書助理	Clerical Assistant	115	114
辦公室助理員	Office Assistant	10	7
高級物料供應主任	Senior Supplies Officer	1	1
物料供應主任	Supplies Officer	1	1
助理物料供應主任	Assistant Supplies Officer	1	1
一級物料供應員	Supplies Supervisor I	2	2
二級物料供應員	Supplies Supervisor II	11	11
助理物料供應員	Supplies Assistant	3	3
物料供應服務員	Supplies Attendant	4	4
高級私人秘書	Senior Personal Secretary	1	1
一級私人秘書	Personal Secretary I	6	5
二級私人秘書	Personal Secretary II	20	19
打字督導	Supervisor of Typing Services	1	1
機密檔案室助理	Confidential Assistant	1	1
繕校員	Calligraphist	2	2
打字員	Typist	6	5
汽車司機	Motor Driver	4	4



附錄 B - 續  
APPENDIX B - Cont'd

共通職系 Common Grade		編制 Establishment	實際員額 Strength
總技術主任	Chief Technical Officer	2	2
高級電氣督察	Senior Electrical Inspector	2	2
電氣督察	Electrical Inspector	4	3
助理電氣督察	Assistant Electrical Inspector	2	2
高級機械督察	Senior Mechanical Inspector	7	6
機械督察	Mechanical Inspector	10	11
助理機械督察	Assistant Mechanical Inspector	4	2
首席測量主任 (工程)	Principal Survey Officer (Engineering)	1	1
高級測量主任 (工程)	Senior Survey Officer (Engineering)	4	4
測量主任 (工程)/ 見習測量主任 (工程)	Survey Officer (Engineering)/ Survey Officer Trainee (Engineering)	11	11
一級監工	Works Supervisor I	12 +1 <sup>♦</sup>	13
二級監工	Works Supervisor II	7	5
高級技工	Senior Artisan	40 +1 <sup>♦</sup>	39
技工	Artisan	103 +4 <sup>♦</sup>	78
丈量員	Chainman	4	4
產業看管長	Head Property Attendant	1 +1 <sup>♦</sup>	1
產業看管員	Property Attendant	4	4
二級工人	Workman II	31	29
<b>總計</b>	<b>Total</b>	<b>1 391</b>	<b>1 274</b>

- ♦ 編外職位
- ♦ Supernumerary post

**附錄 C**  
**APPENDIX C**

**2008 年海事處訓練組舉辦的課程**  
**Training Courses Conducted by Training Section, Marine Department in 2008**

	課程名稱 Course Title	學期 Duration	參加學員 <sup>@</sup> Target Participants <sup>@</sup>	班級數目 Number of Classes	學員數目 Number of Participants
1.	香港水域自動雷達標繪儀和高速船雷達課程 ARPA and High Speed Craft Radar for Hong Kong Waters	3 days	LM, C&E, Marpol	1	6
2.	香港水域雷達操作員課程 Radar Operator Course for Hong Kong Waters	7 days	MI, C&E, FSD	2	16
3.	基本小型船舶操縱技術課程 Basic Boat Handling Skills Course	5 days	MI, C&E, FSD, Marpol	1	6
4.	海事督察訓練課程 - 甲部 MI Training Course - Part A	30 days	MI II	2	24
5.	民安隊海上油污訓練課程 CAS Oil Pollution Course	2 days	CAS	2	28
6.	海上油污訓練課程 Oil Pollution Course	1 day	LCSD	1	20
7.	領港員模擬船操縱課程 Pilotage Simulation Course	2 days	HKPA(A)	1	2
8.	全球海上遇險及安全系統 (通用操作員證書 - 縮短課程) GMDSS (General Operator's Certificate - Abridged Course)	11 days	SMO, MO, S, OFTA, Marpol	1	6
9.	全球海上遇險及安全系統 (限用操作員證書課程) GMDSS (Restricted Operator's Certificate Course)	5 days	SMO, MO, MI II	4	24
10.	船舶交通服務監督員增強課程 VTS Enhancement Course for Supervisor	2 days	SMO, MO, AMC	2	7
11.	船舶交通服務操作員深造課程 - 海外人士 VTS Operator Enhancement Course - Overseas	10 days	CHI(VTS)	1	9
12.	船舶交通服務重新生效課程 VTS Revalidation Course	2 days	AMC	1	2
13.	船舶交通服務操作員課程 VTR Training Course	63 days	AMC	1	4
14.	電子海圖顯示及資料系統基本課程 ECDIS Basic Course	1 day	MI, LM, C&E	3	19
15.	船隻排放過量黑煙檢舉員課程 Smoky Vessel Spotter Course	½ day	Public	2	26
16.	船舶交通服務操作員增潤課程 VTS Operator Refreshment Course	2 days	MC, AMC	2	14
<b>總計 Total</b>				<b>27</b>	<b>213</b>

<sup>@</sup> 請參閱下頁的參加學員編碼目錄。

<sup>@</sup> Please refer to the coding table of target participants on the next page.

**附錄 C – 續**  
**APPENDIX C – Cont'd**

參加海事處在二零零八年舉辦的訓練課程的職位及機構：

List of Organisations/Posts Participated in the Training Courses Conducted by Marine Department in 2008: -

機構	Organisations	縮寫 Abbreviation
中國(船隻航行服務)官員	Chinese (VTS) Personnel	CHI(VTS)
民眾安全服務處	Civil Aid Service	CAS
香港海關	Customs and Excise Department	C&E
消防處	Fire Services Department	FSD
香港領港會(見習領港員)	Hong Kong Pilot Association (Apprentice Pilots)	HKPA(A)
康樂及文化事務處	Leisure and Cultural Services Department	LCSD
香港水警	Marine Police	Marpol
市民	Members of Public	Public
香港電訊管理局	Office of Telecommunication Authority	OFTA
職位	Posts	縮寫 Abbreviation
助理海事監督	Assistant Marine Controller	AMC
小輪船長	Launch Master	LM
海事督察	Marine Inspector	MI
二級海事督察	Marine Inspector II	MI II
海事主任	Marine Officer	MO
高級海事主任	Senior Marine Officer	SMO
驗船主任	Surveyor of Ships	S

**附錄 D**  
**APPENDIX D**

**2008 年海事處訪客**  
**Visitors of the Marine Department, 2008**

本處於 2008 年接待了以下訪客：

During the year of 2008, the Department hosted the following visitors: -

編號 No.	訪問日期 Date of Visit	機構/代表 Organization/Representative
1.	17.01.2008	美國傳統基金會國際研究所 Institute for International Studies, the Heritage Foundation, USA
2.	25.01.2008	綠色力量代表 Officers of Green Power
3.	25.01.2008	希臘船務有限公司代表 Representatives of Stamford Co. Ltd.
4.	17.02.2008 – 29.02.2008	廣東海事局 (港口國監督檢查員交流) Guangdong Maritime Safety Administration (PSCO exchange)
5.	20.02.2008	中海油公司代表 Delegation of China National Offshore Oil Corporation
6.	21.02.2008	政府飛行服務隊 Government Flying Service
7.	04.03.2008	香港船東協會代表 Representatives of Hong Kong Ship Owners Association
8.	05.03.2008	重慶海事局代表團 Delegation of Chongqing Maritime Safety Administration
9.	10.03.2008 – 21.03.2008	新加坡海事及港務管理局驗船主任洪文淵先生 (港口國監督檢查員交流) Mr. ANG Boon Yen, Marine Surveyor of Maritime and Port Authority of Singapore (PSCO exchange)
10.	19.03.2008	香港工會聯合會物流、運輸、工業協會人員 Meeting with HKFTU Logistic & Transport Industry Committee
11.	20.03.2008	泰國海軍官員 Thai naval officers
12.	25.03.2008	香港海事博物館 Hong Kong Maritime Museum
13.	27.03.2008	中海集裝箱運輸有限公司 Mr. Peter Cartis Hamburg Mr. Peter Cartis Hamburg of China Shipping Container Lines Co. Ltd.
14.	28.03.2008	海運學會 Innospec Institute of Sea Transport
15.	28.03.2008	香港商船高級船員協會代表 Representatives of Merchant Navy Officers Guild – HK
16.	02.04.2008	Innospec 訪問團 Innospec Delegation
17.	10.04.2008	深圳海事局 Shenzhen Maritime Safety Administration

**附錄 D – 續**  
**APPENDIX D – Cont'd**

本處於 2008 年接待了以下訪客：

During the year of 2008, the Department hosted the following visitors: -

編號 No.	訪問日期 Date of Visit	機構/代表 Organization/Representative
18.	25.04.2008	日本海事協會代表 Representatives of Nippon Kaiji Kyokai
19.	29.04.2008	海事訓練學院 Vocational Training Council – Maritime Services Training Institute
20.	29.04.2008	三方聯席會議代表 Tripartite Meeting with Operators
21.	05.05.2008	立法局何鍾泰議員 Ir. Dr. the Honourable Raymond Ho Chung Tai, J.P.
22.	06.05.2008	澳洲弗里曼特爾港港務長 Harbour Master of Fremantle Ports, Australia
23.	07.05.2008	太平紳士訪問團 JP's Goodwill visit
24.	14.05.2008	國際油輪船東防污染聯合會 International Tanker Owners Pollution Federation
25.	15.05.2008 & 19.05.2008	香港專業教育學院 (青衣分校) IVE (Tsing Yi)
26.	19.05.2008 – 24.05.2008	廣東海事局 (港口國監督檢查員交流) Guangdong Maritime Safety Administration (PSCO exchange)
27.	20.05.2008	韓國平澤市議會 Pingze City Legislative Body
28.	22.05.2008	廣東海事局 Guangdong Maritime Safety Administration
29.	29.05.2008	北韓搜救訓練課程 North Korea SAR Personnel -- IMO Training Programme (5 days)
30.	02.06.2008	溢油反應暨東亞反應有限公司 Oil Spill Response and East Asia Response Limited
31.	03.06.2008	新加坡海事及港務管理局 Maritime and Port Authority of Singapore
32.	10.06.2008	澳門特別行政區港務局 Maritime Administration of Macao Special Administrative Region
33.	12.06.2008	一國兩制研究中心訪問團 Delegates from the One Country Two Systems Study Centre
34.	12.06.2008	信德船務有限公司崔崇堯先生 Mr. Tsui Sung Yiu of Shun Tak Shipping Co. Ltd.
35.	23.06.2008	廣東漁檢局代表 Representatives of Guangdong Fishing Vessel Registers

**附錄 D – 續**  
**APPENDIX D – Cont'd**

本處於 2008 年接待了以下訪客：

During the year of 2008, the Department hosted the following visitors: -

編號 No.	訪問日期 Date of Visit	機構/代表 Organization/Representative
36.	27.06.2008	一國兩制研究中心訪問團 Delegates from the One Country Two Systems Study Centre
37.	03.07.2008	船級社代表 Representatives of the Classification Societies
38.	15.07.2008	振華船務公司代表 Representatives of Chun Wah Shipping Co. Ltd.
39.	15.07.2008	港九電船拖輪商會代表 Representatives of Hong Kong & Kowloon Motor Boats & Tug Boats Association
40.	17.07.2008	西門子沿岸電力供應公司代表 Representatives of Siemens Onshore Power Supply Company
41.	22.07.2008 – 22.08.2008	深圳海事局 (港口國監督檢查員交流) Shenzhen Maritime Safety Administration (PSCO exchange)
42.	31.07.2008	新加坡政府官員 Singaporean government officials
43.	02.08.2008	香港業餘電台聯會 Hong Kong Amateur Radio Transmitting Society
44.	20.08.2008	羅馬尼亞政府秘書長 Secretary General of Government of Romania
45.	27.08.2008	運輸及房屋局副局長邱誠武先生 Under Secretary for Transport and Housing, JP Yau Shing-mu
46.	27.08.2008	USTH 交流訪問團 Familiarization Visit for Undersecretary TH
47.	27.08.2008	日本海事協會代表 Nippon Kaiji Kyokai Representatives
48.	29.08.2008	孟加拉國駐港總領事秘書及航運部代表團 Secretary to the Consul General of Bangladesh in Hong Kong and delegation from the Ministry of Shipping, Bangladesh
49.	29.08.2008 – 30.08.2008	孟加拉航運部部長 Bangladesh Ministry for Shipping
50.	02.09.2008	中遠航運有限公司劉國元先生 Mr. Liu Kuo Yuen of Cosco Shipping Co. Ltd.
51.	04.09.2008	國立台灣海洋大學 National Taiwan Ocean University
52.	05.09.2008	南韓政府代表團 Various Government Departments of Korea
53.	12.09.2008	國際油輪船東防污染聯合會 International Tanker Owners Pollution Federation

**附錄 D – 續**  
**APPENDIX D – Cont'd**

本處於 2008 年接待了以下訪客：

During the year of 2008, the Department hosted the following visitors: -

編號 No.	訪問日期 Date of Visit	機構/代表 Organization/Representative
54.	16.09.2008 – 26.09.2008	澳洲海上安全局驗船主任大偉費格遜先生 (港口國監督檢查員交流) Mr. David Ferguson, Marine Surveyor of Australian Maritime Safety Authority (PSCO exchange)
55.	17.09.2008	深圳海事局 VTS Operator Course for Shenzhen MSA
56.	17.09.2008	廣東海事局 Guangdong Maritime Safety Administration
57.	29.09.2008	泰國海軍官員 Thai naval officers
58.	10.10.2008	香港民航局 SAR Trainees from Civil Aviation Dept.
59.	10.10.2008	世界交通之友 Universal Transport Fans Association
60.	14.10.2008	印尼海軍官員 Indonesian naval officers
61.	14.10.2008	I.R. Iran 船務公司 Sarraf 船長及 Mr. Sadat, 副總經理 Capt. Sarraf & Mr. Sadat, Dep. General Manager of I.R. Iran Shipping Co.
62.	23.10.2008 – 31.10.2008 (5 days)	澳門海事局 Familiarization Programme for Macau Marine Dept.
63.	27.10.2008	阿拉伯聯合酋長國訪問團 Maritime Security Executive Committee of the United Arab Emirates
64.	31.10.2008	加拿大供應鏈及物流協會會長 Robert Armstrong 先生 President of Supply Chain & Logistics Association, Canada, Mr Robert Armstrong
65.	05.11.2008	中遠航運有限公司 上海代表團 Cosco Shipping (Shanghai) Co. Representatives
66.	06.11.2008	Navigation Safety and Information Division 南韓海事廳助理處長 Ministry of Land, Transport and Maritime Affairs, South Korea
67.	06.11.2008	烏克蘭代表團 Ukrainian delegation
68.	07.11.2008	挪威船級社代表 Det Norske Veritas Representatives
69.	07.11.2008	海員協會及船東會代表 Representatives of Seafarers Union and Ship Owners Association
70.	10.11.2008 – 21.11.2008	杭州市交通局 Hangzhou Municipal Transportation Bureau

**附錄 D – 續**  
**APPENDIX D – Cont'd**

本處於 2008 年接待了以下訪客：

During the year of 2008, the Department hosted the following visitors: -

編號 No.	訪問日期 Date of Visit	機構/代表 Organization/Representative
71.	10.11.2008 & 29.12.2008	香港理工大學機械工程學系 Department of Mechanical Engineering, Hong Kong Polytechnic University
72.	13.11.2008	Energy Futures, Inc. 的 Mr. James S. CANNON Mr. James S. CANNON of Energy Futures, Inc.
73.	20.11.2008 – 24.11.2008	美國海岸警衛隊國際港口保安聯絡小組 US Coast Guard International Port Security Liaison Team
74.	25.11.2008	中國航運安全部人員 Representatives of China Shipping Safety Officer Branch
75.	25.11.2008	香港水警 Marine Police
76.	27.11.2008	Delphis 船務公司及香港海事處工程監督協會代表 Representatives of Delphis Shipping Co & MD Technical Inspector Association
77.	27.11.2008	比利時船東 Belgium Ship Owners
78.	28.11.2008	職業訓練局代表 Representatives of Vocational Training Council
79.	03.12.2008	珠海海事局 Zhu Hai Maritime Safety Administration
80.	03.12.2008	中國外運代表分享會 Sharing Session with Representatives of Sinotran
81.	10.12.2008	政府飛行服務隊 Government Flying Service
82.	16.12.2008 – 18.12.2008	孟加拉代表團 Delegation of Bangladesh
83.	17.12.2008 – 19.12.2008	深圳海事局危防處 Department of Dangerous Cargo & Pollution Control, Shenzhen MSA
84.	18.12.2008 – 20.12.2008	廣東海事局, 深圳海事局及珠海海事局 Guangdong Maritime Safety Administration (MSA), Shenzhen MSA & Zhu Hai MSA
85.	30.12.2008	香港中流作業總商會代表 Representatives of Hong Kong Mid-Stream Operators Association



**附錄 E**  
**APPENDIX E**

**2008 年新訂海事法例**  
**New Maritime Legislation, 2008**

二零零八年一月一日至二零零八年十二月三十一日期間通過的海事及航運法例列載如下：  
The following maritime and shipping legislation was enacted during the year under review  
(1.1.2008 –31.12.2008):

法例名稱 Title	法例編號 L.N. No.
2008 年商船(限制船東責任)(利率)(修訂)令 Merchant Shipping (Limitation of Shipowners Liability) (Rate of Interest) (Amendment) Order 2008	56 (14.3.2008)
2008 年第二令 (No.2) Order 2008	151 (30.5.2008)
2008 年第三令 (No.3) Order 2008	261 (12.12.2008)
2008 年商船(本地船隻)(一般)(修訂)規例 Merchant Shipping (Local Vessels) (General) (Amendment) Regulation 2008	150 (30.5.2008)
2008 年商船(防止及控制污染)(排放污染廢物費用)(修訂)規例 Merchant Shipping (Prevention and Control of Pollution) (Charges for Discharge of Polluting Waste) (Amendment) Regulation 2008	99 (2.5.2008)
2008 年商船(防止及控制污染)(費用)(修訂)規例(生效日期)公告 Merchant Shipping (Prevention and Control of Pollution) (Fees) (Amendment) Regulation 2008 (Commencement) Notice	95 (25.4.2008)
商船(防止空氣污染)規例(生效日期)公告 Merchant Shipping (Prevention of Air Pollution) Regulation (Commencement) Notice	94 (25.4.2008)
2008 年領港(費用)(修訂)令 Pilotage (Dues) (Amendment) Order 2008	70 (3.4.2008)
2008 年船舶及港口管制(修訂)規例 Shipping and Port Control (Amendment) Regulation 2008	148 (30.5.2008)

**附錄 F**  
**APPENDIX F**

**2008 年輔航設備**  
**Aids to Navigation, 2008**

**A. 使用中的輔航設備**

**AIDS TO NAVIGATION IN USE**

	輔航設備 AIDS TO NAVIGATION	截至 2008 年 12 月 31 日 as at 31.12.2008
1.	燈浮標 Lighted Buoy	124
2.	燈航標 Lighted Beacon	412
3.	雷達應答標 Racon	1
4.	霧角 Fog Horn	7

**B. 本年新設的輔航裝置**

**NEW AIDS ESTABLISHED DURING THE YEAR**

1.	渠務 1 DSD 1	一個以太陽能操作的新燈浮標於 1 月 17 日設立，用以標示西面危險品錨地範圍內裝有海底渠口連擴散器。 A solar power operated light was established on 17-1-08 to mark an area in Western Dangerous Goods Anchorage where submarine outfalls with diffusers are installed.
2.	渠務 2 DSD 2	一個以太陽能操作的新燈浮標於 1 月 17 日設立，用以標示西面危險品錨地範圍內裝有海底渠口連擴散器。 A solar power operated light was established on 17-1-08 to mark an area in Western Dangerous Goods Anchorage where submarine outfalls with diffusers are installed.
3.	渠務 3 DSD 3	一個以太陽能操作的新燈浮標於 1 月 17 日設立，用以標示西面危險品錨地範圍內裝有海底渠口連擴散器。 A solar power operated light was established on 17-1-08 to mark an area in Western Dangerous Goods Anchorage where submarine outfalls with diffusers are installed.
4.	渠務 4 DSD 4	一個以太陽能操作的新燈浮標於 1 月 17 日設立，用以標示西面危險品錨地範圍內裝有海底渠口連擴散器。 A solar power operated light was established on 17-1-08 to mark an area in Western Dangerous Goods Anchorage where submarine outfalls with diffusers are installed.
5.	氣象 6 Weather 6	一個以太陽能操作的新氣象燈浮標於 10 月 30 日設立在大潭灣，用以收集氣象和水流數據。 A solar power operated weather buoy was established on 31-10-08 in Tai Tam Bay for collecting weather and current data.

**C. 本年拆除的輔航裝置**

**AIDS DISCONTINUED DURING THE YEAR**

1.	繫泊浮泡 A79 Mooring Buoy A79	這個燈浮於 10 月 21 日永久終止服務。 The lighted buoy was permanently withdrawn from service on 21-10-08.
2.	繫泊浮泡 A80 Mooring Buoy A80	這個燈浮於 10 月 21 日永久終止服務。 The lighted buoy was permanently withdrawn from service on 21-10-08.

附錄 F – 續  
APPENDIX F – Cont'd

**D. 本年遭損毀的輔航裝置  
AIDS DAMAGED DURING THE YEAR**

下列燈浮標遭損毀，航標燈熄滅。  
The lighted buoys listed below were damaged and unlit.

月份 Month	名稱	Name
1 月 January	小鴉洲北	Siu A Chau North
	南丫電力 1	P 1
2 月 February	繫泊浮泡 A74	Mooring Buoy A74
4 月 April	博寮 1	LCS 1
6 月 June	小鴉洲北	Siu A Chau North
	機場 1	Airport 1
7 月 July	小鴉洲北	Siu A Chau North
8 月 August	青衣西	Tsing Yi West
	藍塘 1	TCS 1
	繫泊浮泡 A70	Mooring Buoy A70
	繫泊浮泡 A46	Mooring Buoy A46
9 月 September	青山 7	C P 7
	北航 3	Northern 3
	白石	White Rock
10 月 October	屯門入境	IMM TM
	繫泊浮泡 A76	Mooring Buoy A76
	藍塘 1	TCS 1
	青山 7	C P 7
11 月 November	小磨刀 西北	Siu Mo To NW
	繫泊浮泡 A39	Mooring Buoy A39
12 月 December	繫泊浮泡 B31	Mooring Buoy B31

附錄 F – 續  
APPENDIX F – Cont'd

**E. 本年改進的輔航裝置  
AIDS REPROVISIONED DURING THE YEAR**

1. 下列燈航標已換上全新現代化器材，用以提高光達距離。  
The lighted beacons listed below were upgraded with modern equipment for better luminous range.

月份 Month	名稱	Name
3 月 March	青荃橋北白	Tsing Tsuen Bridge North White
	青衣南 2	Tsing Yi South 2
4 月 April	舊啓德機場加油站西北面	Ex - Kai Tak Airport Fuel Dolphin NW End
	舊啓德機場加油站東南面	Ex - Kai Tak Airport Fuel Dolphin SE End
	白角	Pak Kok
	海上救援東局 1	Sea Rescue East Station 1
	海上救援東局 2	Sea Rescue East Station 2
	青衣南 1	Tsing Yi South 1
	香港內河碼頭 2	RTT-2
5 月 May	黃泥排	Wong Nei Pai
	赤徑渡輪碼頭	Chek Keng Ferry Pier
	海上救援西局 1	Sea Rescue West Station 1
	大澳 3	Tai O 3
	大澳 4	Tai O 4
6 月 June	基準石	Datum Rock
7 月 July	龍山排	Lung Shan Pai
	高馬石	Comber Rock
	海上救援西局 2	Sea Rescue West Station 2
	海上救援西局 3	Sea Rescue West Station 3
	海上救援西局 4	Sea Rescue West Station 4
	香港內河碼頭 2	RTT-2
	大澳 2	Tai O 2
9 月 September	香港內河碼頭 1	RTT-1
	香港內河碼頭 4	RTT-4
11 月 November	香港仔南 1	Aberdeen South 1
	香港仔南 2	Aberdeen South 2
12 月 December	屯門 2	Tuen Mun 2
	屯門 3	Tuen Mun 3

附錄 F – 續  
APPENDIX F – Cont'd

E. 本年改進的輔航裝置 (續)

**AIDS REPROVISIONED DURING THE YEAR (Cont'd)**

2. 下列燈航標已換上全新現代化器材，用以提高其可靠性。  
The lighted beacons listed below were replaced with modern equipment for higher reliability.

月份 Month	名稱	Name
1 月 January	大利橋北 2	Tai Lei Bridge North 2
	大利橋南 9	Tai Lei Bridge South 9
	將軍澳 3	Tseung Kwan O 3
	石崗圍	Shek Kwong Wai
	后海灣 H	Deep Bay H
2 月 February	九龍公眾碼頭東	Kowloon Public Pier E.
	青荃橋南紅	Tsing Tsuen Bridge South Red
3 月 March	沙洲碼頭 1	Sha Chau Jetty 1
	沙洲碼頭 2	Sha Chau Jetty 2
6 月 June	觀塘公眾碼頭	Kwun Tong Public Pier
	聖士提反灣碼頭	St. Stephen's Beach Pier
9 月 September	九龍公眾碼頭西	Kowloon Public Pier W.
10 月 October	赤徑渡輪碼頭	Chek Keng Ferry Pier
11 月 November	青洲	Green Island
12 月 December	麻南笏碼頭	Ma Lam Wat Pier

附錄 F – 續  
APPENDIX F – Cont'd

E. 本年改進的輔航裝置 (續)

AIDS REPROVISIONED DURING THE YEAR (Cont'd)

3. 下列燈航標已更換太陽能電池，用以提高航標的可靠性。

The solar batteries of the lighted beacons listed below were renewed in order to increase reliability.

月份 Month	名稱	Name
1 月 January	大尾篤南碼頭	Tai Mei Tuk South Pier
	基準石	Datum Rock
2 月 February	大鴉洲	Tai A Chau
	筲箕灣 5	Shau Kei Wan 5
	筲箕灣 1	Shau Kei Wan 1
	筲箕灣 4	Shau Kei Wan 4
	柴灣 2	Chai Wan 2
	三家村 1	Sam Ka Tsuen 1
3 月 March	大浪排	Tai Long Pai
4 月 April	北交椅洲	North Kau Yi Chau
	長洲石	Cheung Chau Rock
	基準石	Datum Rock
	圓角	Yuen Kok
	銀礦灣石	Silver Mine Bay Rock
	灣仔貨運站 2	Wan Chai PCWA 2
5 月 May	黃花排	Wong Fa Pai
	青龍頭碼頭	Tsing Lung Tau Pier
	觀塘公眾碼頭	Kwun Tong Public Pier
6 月 June	赤徑渡輪碼頭	Chek Keng Ferry Pier
	吉澳碼頭	Kat O Pier
7 月 July	灣仔貨運站 1	Wan Chai PCWA 1
	海上救援西局 4	Sea Rescue West Station 4
	汀九橋墩 1	Ting Kau Bridge Pier 1
	汀九橋墩 2	Ting Kau Bridge Pier 2
	汀九橋墩 3	Ting Kau Bridge Pier 3
8 月 August	中環 9 號碼頭	Central Pier 9
	汀九橋墩 4	Ting Kau Bridge Pier 4
10 月 October	大鴉洲	Tai A Chau
12 月 December	銀礦灣石	Silver Mine Bay Rock
	下棚 (交通燈)	Ha Pang (Traffic Light)
	布袋澳新碼頭	Po Toi O New Pier

附錄 F – 續  
APPENDIX F – Cont'd

E. 本年改進的輔航裝置 (續)

**AIDS REPROVISIONED DURING THE YEAR (Cont'd)**

4. 下列燈航標的太陽能發電板數目已增加，用以提高航標的可靠性。

The numbers of solar panel of the lighted beacons listed below were increased to enhance reliability.

月份 Month	地區	Location
7月 July	蒲苔	Po Toi
10月 October	藍塘 1	TCS 1
12月 December	長洲 5	Cheung Chau 5

F. 工場員工與輔航燈比例

**RATIO OF WORKSHOP STAFF TO AIDS**

年份 Year	員工 <sup>(1)</sup> Staff <sup>(1)</sup>		輔航燈 Aids		比例 Ratio
		(%)		(%)	
1989	31	(+10.7)	307	(-2.2)	9.9
1990	34	(+9.7)	319	(+3.9)	9.4
1991	34	(0)	326	(+2.2)	9.6
1992	34	(0)	327	(+0.3)	9.6
1993	40	(+17.6)	356	(+8.9)	8.9
1994	40	(0)	375	(+5.3)	9.4
1995	37	(-7.5)	379	(+1.1)	10.2
1996	36	(-2.7)	380	(+0.3)	10.6
1997	32	(-11.1)	395	(+3.9)	12.3
1998	29	(-9.4)	432	(+9.4)	14.9
1999	27	(-6.9)	463	(+7.2)	17.1
2000	27	(0)	468	(+1.1)	17.3
2001	25	(-7.4)	482	(+3.0)	19.3
2002	27	(+8.0)	483	(+0.2)	17.9
2003	27	(0)	497	(+2.9)	18.4
2004	27	(0)	509	(+2.4)	18.9
2005	25	(-7.4)	518	(+1.8)	20.7
2006	23	(-8.0)	529	(+2.1)	23.0
2007	23	(0)	533	(+0.8)	23.2
2008	24	(+4.3)	536	(+0.6)	22.3

註釋： (1) 不包括負責在香港水域範圍內看管繫船設備/檢修浮泡的 4 位員工。

Note: (1) Excluding the four staffs who are responsible for looking after the mooring facilities/overhaul of buoys within Hong Kong Waters.