

## PILOTAGE ADVISORY COMMITTEE

### Amendment of the Fifth Schedule to Shipping and Port Control Regulations (Cap. 313A) Restricted Areas around Hong Kong International Airport

#### Purpose

1. The Hong Kong-Zhuhai-Macao Bridge (HZMB) Hong Kong Link Road (HKLR), HZMB Hong Kong Boundary Crossing Facilities (HKBCF) and Tuen Mun - Chek Lap Kok Link (TM-CLKL) projects will affect the Hong Kong International Airport Approach Area (HKIAAA) Nos. 2, 3, 5 and 7 as specified in the Fifth Schedule to the Shipping and Port Control Regulations (Cap. 313A) ("Schedule 5"). Schedule 5 will therefore need to be amended to cater for these projects. The Highways Department had consulted the Pilotage Advisory Committee in 2009<sup>1</sup> before gazetting the above projects under the Town Planning Ordinance (Cap. 131), the Foreshore and Sea-bed (Reclamations) Ordinance (Cap. 127) and the Roads (Works, Use and Compensation) Ordinance (Cap. 370) in the same year. The projects were then authorized under the respective Ordinances in October 2011 and works are now being carried out under full swing. The above amendment had been presented at a joint consultation forum on HZMB HKLR, HKBCF and TM-CLKL on 3 June 2009. This paper is to update members on the proposed amendment before its implementation.

#### Background

2. According to the design of the HKBCF, HKLR and TM-CLKL, the HKBCF will be located on reclamation at the north-eastern waters off the Hong Kong International Airport (HKIA); whilst the HKLR will connect the HZMB Main Bridge Section from the Hong Kong Special Administrative Region boundary to the HKBCF which include viaducts, a tunnel through Scenic Hill, and tunnel cum at-grade road on reclamation along the eastern coast of the Airport Island. The TM-CLKL's southern landfall for its Northern Connection sub-sea tunnel and its Southern Connection (viaduct connecting HKBCF to the North Lantau Highway) will be integrated with the HKBCF. The overall layout of HKBCF, HKLR and TM-CLKL is shown in *Figure 1*.

---

<sup>1</sup> PAC Paper No. 4/2009 at [http://www.mardep.gov.hk/en/aboutus/pdf/pacp04\\_09.pdf](http://www.mardep.gov.hk/en/aboutus/pdf/pacp04_09.pdf)

3. On the proposed layout, the existing HKIAAA Nos. 2, 5 and 7 around the Hong Kong International Airport (HKIA) will inevitably be encroached and needs to be amended. In addition, to allow current vessels to access to and from the existing SkyPier and Fire Service Department's rescue berth, the existing HKIAAA No. 3 needs to be amended as well.

4. To cater for the three projects of HKBCF, HKLR and TM-CLKL, it is necessary to amend the boundary of the HKIAAA around the HKIA as specified in paragraph 5 and as detailed in *Figure 2*.

### **Detailed Instructions**

5. The Schedule 5 should be amended as follows (the proposed amendments are also shown in attached *Figure 2*):

- (i) Paragraph 6 of Schedule 5 specifying the boundary of the HKIAAA No. 2 should be replaced by the following:

The area of the waters of Hong Kong bounded by the shore and straight lines joining the following positions-

- (a) latitude 22°18' 37.5" north,  
longitude 113° 56' 25.5" east;
- (b) latitude 22° 18' 39" north,  
longitude 113° 56' 29" east;
- (c) latitude 22° 18' 35" north,  
longitude 113° 56' 31" east;
- (d) latitude 22° 18' 32.7" north,  
longitude 113° 56' 23.3" east.

- (ii) Paragraph 7 of Schedule 5 specifying the boundary of the HKIAAA No. 3 should be replaced by the following:

The area of the waters of Hong Kong bounded by the shore and straight lines joining the following positions-

- (a) latitude 22° 18' 24" north,  
longitude 113 ° 53' 47" east;

- (b) latitude  $22^{\circ} 18' 06''$  north,  
longitude  $113^{\circ} 52' 50''$  east;
- (c) latitude  $22^{\circ} 18' 30''$  north,  
longitude  $113^{\circ} 52' 40''$  east;
- (d) latitude  $22^{\circ} 18' 40''$  north,  
longitude  $113^{\circ} 53' 13''$  east;
- (e) latitude  $22^{\circ} 19' 04.5''$  north,  
longitude  $113^{\circ} 53' 45.6''$  east;
- (f) latitude  $22^{\circ} 19' 38''$  north,  
longitude  $113^{\circ} 55' 34.7''$  east;
- (g) latitude  $22^{\circ} 19' 39''$  north,  
longitude  $113^{\circ} 56' 19''$  east;
- (h) latitude  $22^{\circ} 19' 50''$  north,  
longitude  $113^{\circ} 56' 51''$  east;
- (i) latitude  $22^{\circ} 19' 35.5''$  north,  
longitude  $113^{\circ} 56' 56.2''$  east;
- (j) latitude  $22^{\circ} 19' 21.7''$  north,  
longitude  $113^{\circ} 56' 50.8''$  east;
- (k) latitude  $22^{\circ} 19' 19.8''$  north,  
longitude  $113^{\circ} 56' 45.3''$  east.

(iii) Paragraph 9 of Schedule 5 specifying the boundary of the HKIAAA No. 5 should be replaced by the following:

The area of the waters of Hong Kong bounded by the shore and straight lines joining the following positions (a) to (c), and (d) to (f)-

- (a) latitude  $22^{\circ} 18' 52''$  north,  
longitude  $113^{\circ} 56' 33''$  east;
- (b) latitude  $22^{\circ} 18' 57''$  north,  
longitude  $113^{\circ} 56' 50''$  east;

- (c) latitude 22° 18' 55.7" north,  
longitude 113° 56' 50.7" east;
  - (d) latitude 22° 18' 49" north,  
longitude 113° 56' 53.1" east;
  - (e) latitude 22° 18' 33" north,  
longitude 113 ° 56' 59" east;
  - (f) latitude 22° 18' 21.9" north,  
longitude 113° 56' 24.8" east.
- (iv) Paragraph 11 of Schedule 5 specifying the boundary of the HKIAAA No. 7 should be replaced by the following:

The area of the waters of Hong Kong bounded by the shore and straight lines joining the following positions (a) to (f), (g) to (i), and (j) to (k)-

- (a) latitude 22° 17' 15" north,  
longitude 113° 53' 40" east;
- (b) latitude 22° 16' 53" north,  
longitude 113° 52' 32" east;
- (c) latitude 22° 17' 55" north,  
longitude 113° 52' 00" east;
- (d) latitude 22° 18' 32" north,  
longitude 113° 52' 00" east;
- (e) latitude 22° 20' 10" north,  
longitude 113 ° 57' 19" east;
- (f) latitude 22° 19' 18.5" north,  
longitude 113° 57' 38.1" east;
- (g) latitude 22° 19' 07.4" north,  
longitude 113° 57' 42.3" east;
- (h) latitude 22° 18' 36" north,  
longitude 113° 57' 54" east;

- (i) latitude 22° 18' 08.3" north,  
longitude 113° 56' 26.7" east;
- (j) latitude 22 ° 17' 42" north,  
longitude 113° 55' 04" east;
- (k) latitude 22° 17' 31" north,  
longitude 113° 54' 30" east.

### **Programme of Amendment**

6. This proposed legislative amendment to Schedule 5 shall come into operation before end 2017 as the essential works for commissioning of HZMB local projects in Hong Kong including HKBCF and HKLR are targeted to be completed by end of 2017.

7. Members are invited to note this paper, which will be co-presented by the Highways Department and its consultant.

Hong Kong-Zhuhai-Macao Bridge Hong Kong Project Management Office  
Highways Department

January 2017

Figure 1

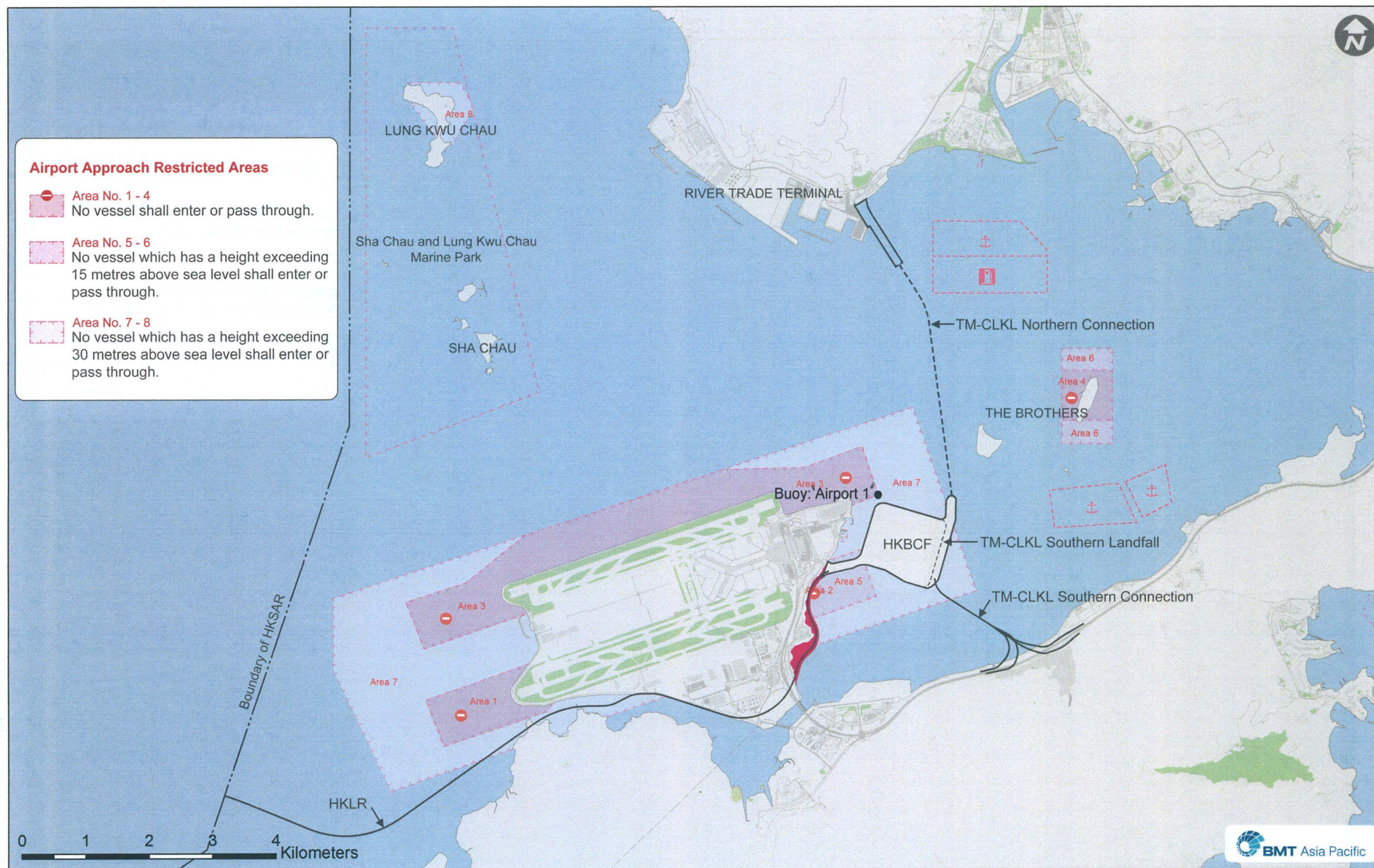
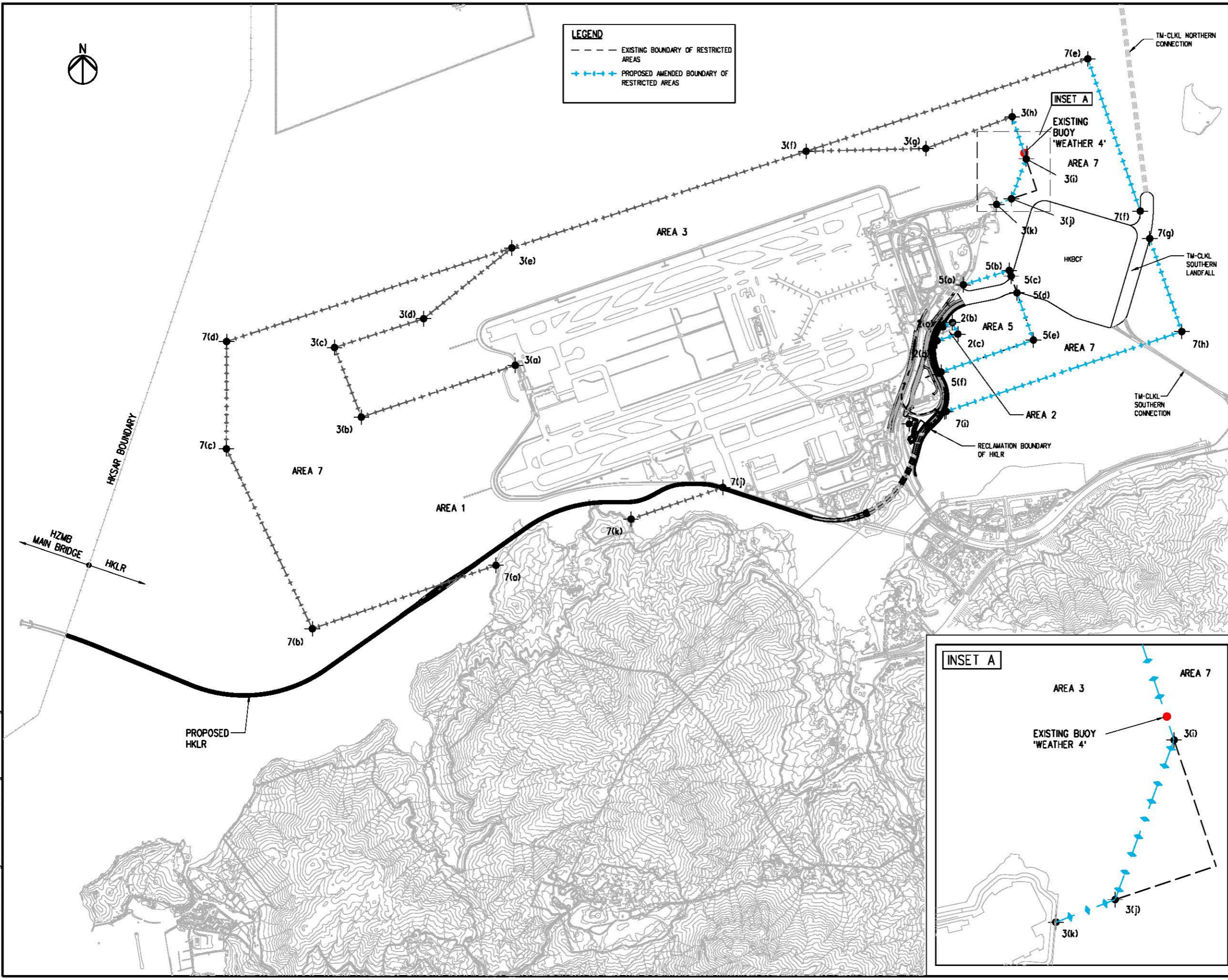


Figure 2



HONG KONG INTERNATIONAL AIRPORT APPROACH AREA NO.	COORDINATES OF THE BOUNDARIES (REPRESENTED BY THE WCS 84)	RESTRICTIONS
2	THE AREA OF THE WATERS OF HONG KONG BOUNDED BY THE SHORE AND STRAIGHT LINES JOINING THE FOLLOWING POSITIONS-	EXCEPT WITH THE PERMISSION OF THE DIRECTOR OF MARINE, NO VESSEL SHALL ENTER OR PASS THROUGH.
	(a) 22° 18' 37.5" N 113° 58' 25.5" E	
	(b) 22° 18' 39" N 113° 58' 29" E	
	(c) 22° 18' 35" N 113° 58' 31" E	
3	THE AREA OF THE WATERS OF HONG KONG BOUNDED BY THE SHORE AND STRAIGHT LINES JOINING THE FOLLOWING POSITIONS-	EXCEPT WITH THE PERMISSION OF THE DIRECTOR OF MARINE, NO VESSEL SHALL ENTER OR PASS THROUGH.
	(a) 22° 18' 24" N 113° 53' 47" E	
	(b) 22° 18' 06" N 113° 52' 50" E	
	(c) 22° 18' 30" N 113° 52' 40" E	
	(d) 22° 18' 40" N 113° 53' 13" E	
	(e) 22° 19' 04.5" N 113° 53' 45.5" E	
	(f) 22° 19' 38" N 113° 53' 34.7" E	
	(g) 22° 19' 39" N 113° 56' 19" E	
	(h) 22° 19' 50" N 113° 56' 51" E	
	(i) 22° 19' 35.5" N 113° 56' 56.2" E	
	(j) 22° 19' 21.7" N 113° 56' 50.8" E	
5	THE AREA OF THE WATERS OF HONG KONG BOUNDED BY THE SHORE AND STRAIGHT LINES JOINING THE FOLLOWING POSITIONS (a) TO (c), AND (d) TO (f)-	EXCEPT WITH THE PERMISSION OF THE DIRECTOR OF MARINE, NO VESSEL WHICH HAS A HEIGHT EXCEEDING 15 METRES ABOVE SEA LEVEL SHALL ENTER OR PASS THROUGH.
	(a) 22° 18' 52" N 113° 56' 33" E	
	(b) 22° 18' 57" N 113° 56' 50" E	
	(c) 22° 18' 53.7" N 113° 56' 50.7" E	
	(d) 22° 18' 49" N 113° 56' 53.1" E	
	(e) 22° 18' 33" N 113° 56' 59" E	
7	THE AREA OF THE WATERS OF HONG KONG BOUNDED BY THE SHORE AND STRAIGHT LINES JOINING THE FOLLOWING POSITIONS (a) TO (f), (g) TO (i), AND (j) TO (k)-	EXCEPT WITH THE PERMISSION OF THE DIRECTOR OF MARINE, NO VESSEL WHICH HAS A HEIGHT EXCEEDING 30 METRES ABOVE SEA LEVEL SHALL ENTER OR PASS THROUGH.
	(a) 22° 17' 15" N 113° 53' 40" E	
	(b) 22° 16' 53" N 113° 52' 32" E	
	(c) 22° 17' 55" N 113° 52' 00" E	
	(d) 22° 18' 32" N 113° 52' 00" E	
	(e) 22° 20' 10" N 113° 57' 19" E	
	(f) 22° 19' 18.5" N 113° 57' 38.1" E	
	(g) 22° 19' 07.4" N 113° 57' 42.3" E	
	(h) 22° 18' 36" N 113° 57' 54" E	
	(i) 22° 18' 08.3" N 113° 58' 26.7" E	
	(j) 22° 17' 42" N 113° 55' 04" E	
(k) 22° 17' 31" N 113° 54' 30" E		

Printed by : 12-Dec-16  
 Filename : Z:\Drawing\Draft\Leon Mo\Figure 2\_2\_FF.dgn