

LOCAL VESSEL ADVISORY COMMITTEE

Adjustments of Passage Areas in New Yau Ma Tei Typhoon Shelter

Purpose

Members are invited to note the adjustments of the passage areas at the New Yau Ma Tei Typhoon Shelter and the establishment of two sets of multiple moorings to accommodate ferries providing essential public transport services.

Background

2. To continuously enhance the quality of public transport services, the Government announced a vessel subsidy scheme (hereinafter referred to as the “Scheme”) in the Chief Executive’s 2019 Policy Address, fully subsidising the replacement of vessels engage in public transport services on outlying island ferry routes. A total of 22 new vessels were procured under the first phase of the Scheme, which are being put into operation gradually for the outlying island ferry services since March 2024.

3. In order to provide essential public transport service, ferry services operators are required to maintain ferry services up to two hours after a tropical cyclone warning signal No. 8 is hoisted, subject to prevailing weather and sea conditions and resume services within two hours after the signal is lowered. Given the above requirement, ferries to berth in locations distant from service points for shelter is impractical. However, once a tropical cyclone warning signal No. 8 is hoisted, the usage rate of typhoon shelters near the service points has almost reached their capacity, making it challenging for ferry operators to find safe anchorage after service suspension.

The Adjustments

4. To effectively maintain public ferry services and adequately safeguard the Government-funded vessels, Marine Department (MD) will realign the passage area in the southern part of the New Yau Ma Tei Typhoon Shelter and lay two sets of moorings in that area. This adjustment will increase the berthing area by 0.65 hectares, facilitating ferry services operators in mooring a pontoon to the new moorings and enabling the berthing of four ferries on both the starboard and port sides (two on each side). Additionally, it will facilitate fire boat access to the south mooring area of New Yau Ma Tei Typhoon Shelter for carrying out emergence services.

5. The adjustment to the passage areas is illustrated at **Annex A**, and the abovementioned multiple moorings are detailed at **Annex B**.

Way Forward

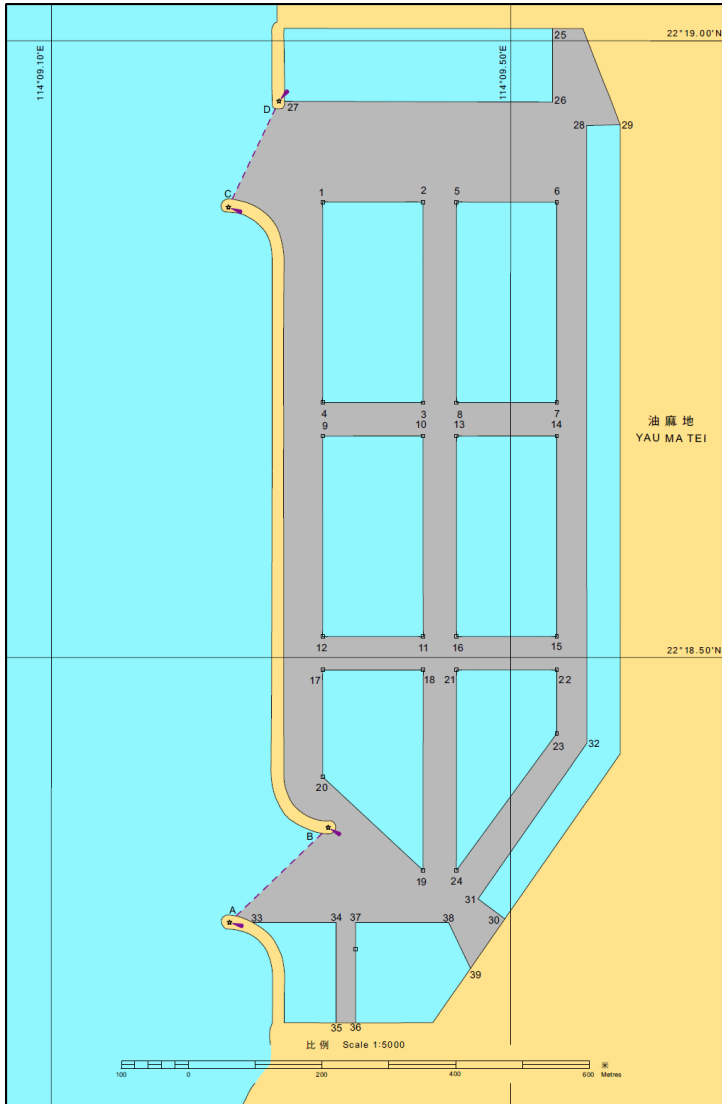
6. Members are invited to note the details of the adjustments to the passage areas and the adoption of multiple moorings outlines in this paper.

7. The adjustments will be put in place in the first quarter of 2025.

Planning and Services Division
Marine Department
December 2024

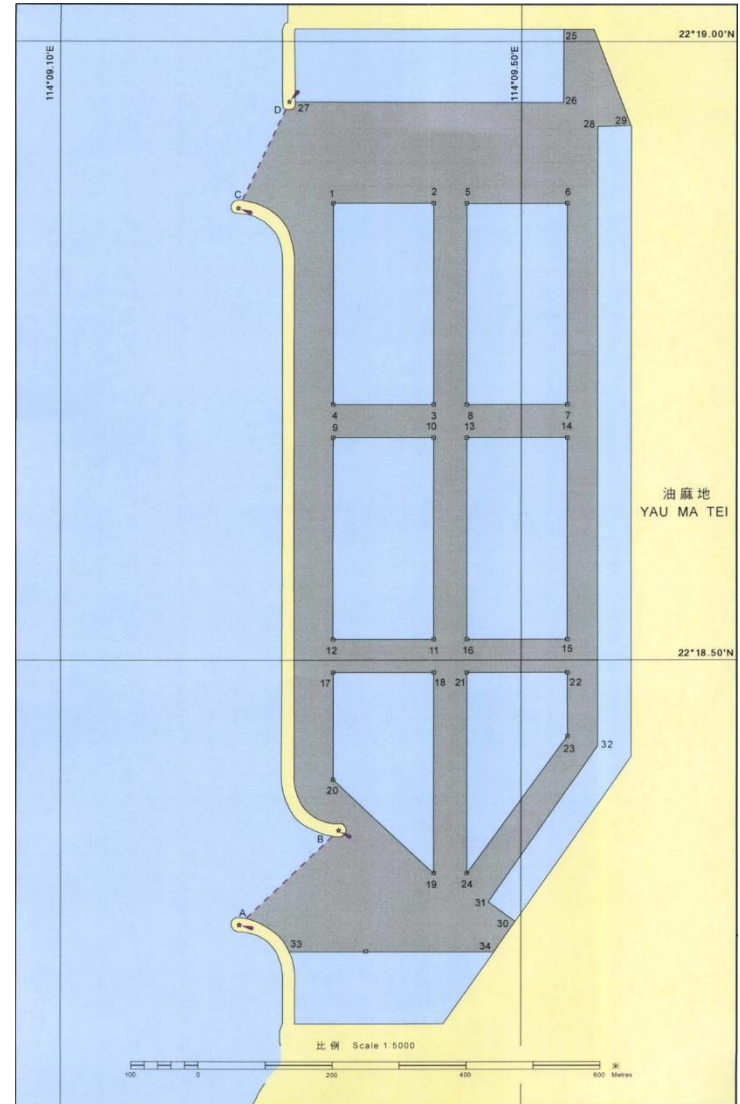
調整後的安排

Adjusted Arrangement



現有的安排

Existing Arrangement



於新油麻地避風塘內設立的多船繫泊設備

Multiple Moorings in the new Yau Ma Tei Typhoon Shelter

