

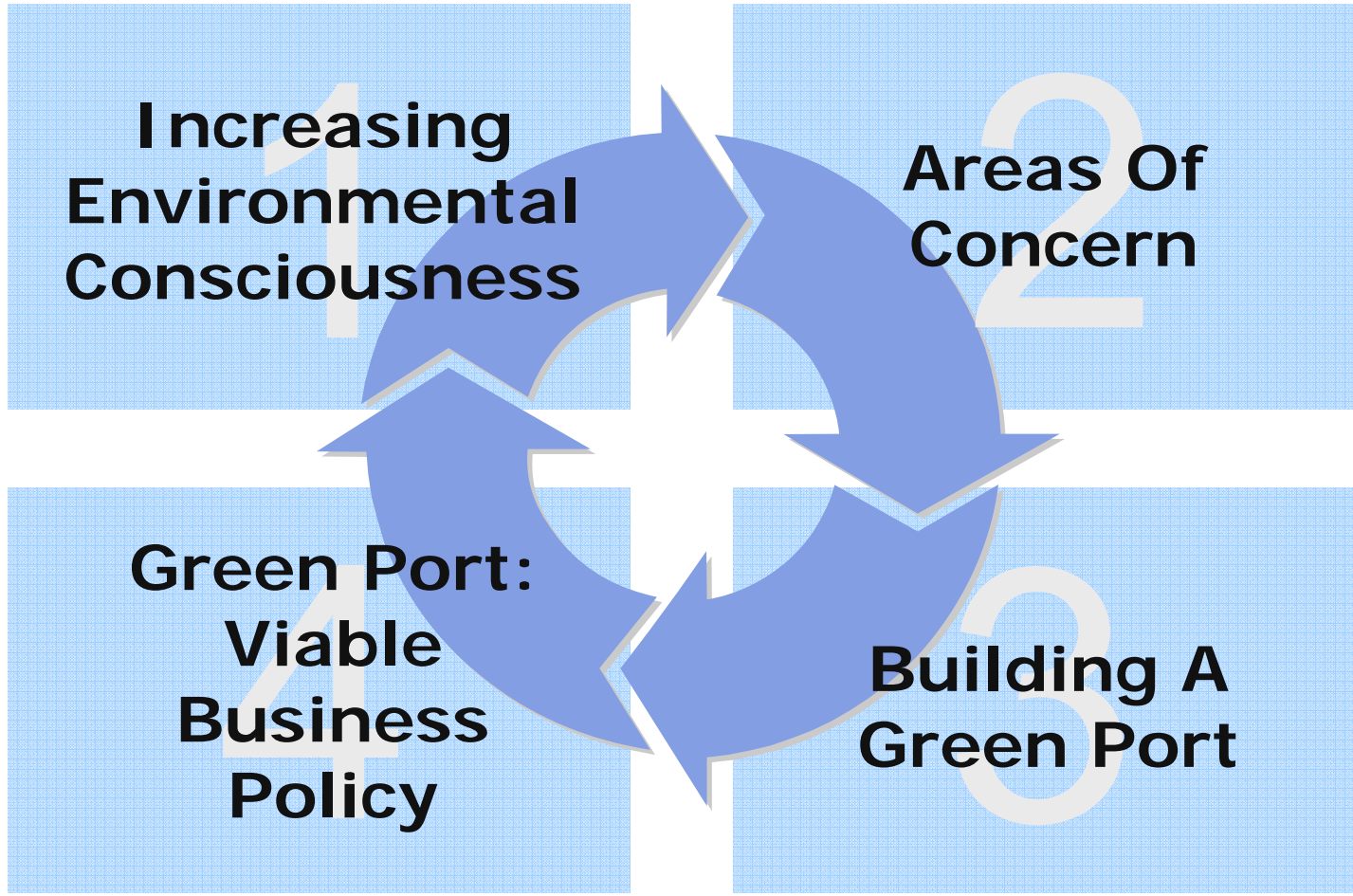


# The Green Port as a Viable Business Policy

Dr. FU, Yu-ning

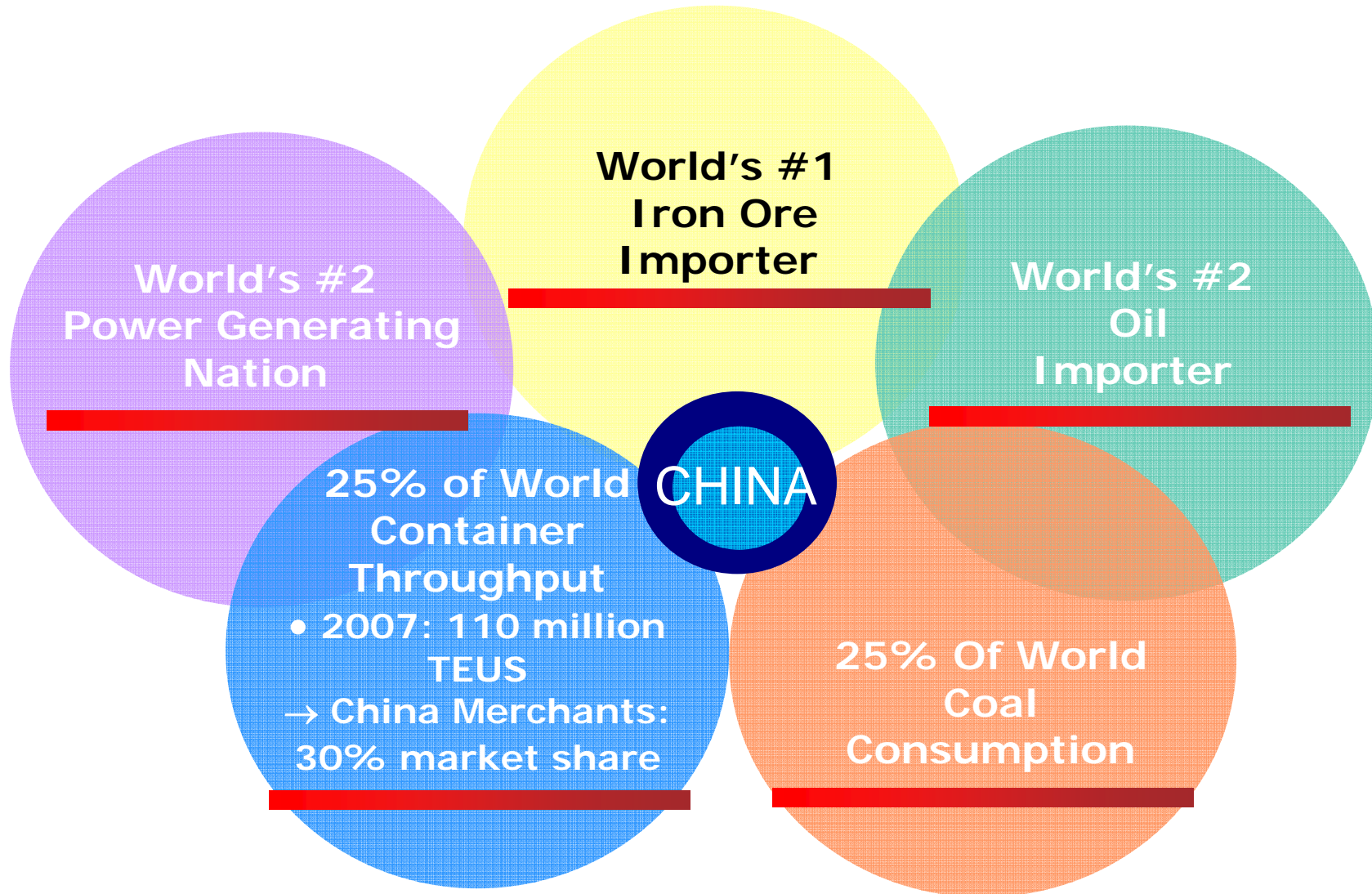
# Contents

---



# Sheer Size And Scale

---



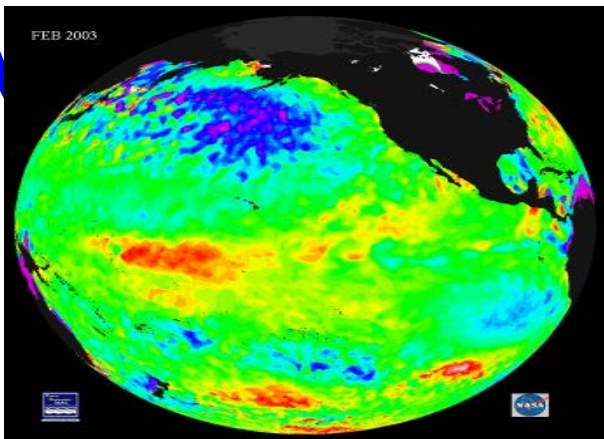
# World Agenda

## Exhaust Emissions

- Carbon Dioxide
- Nitrous Oxide



## El Nino/La Nina



## Rising Sea Temperatures

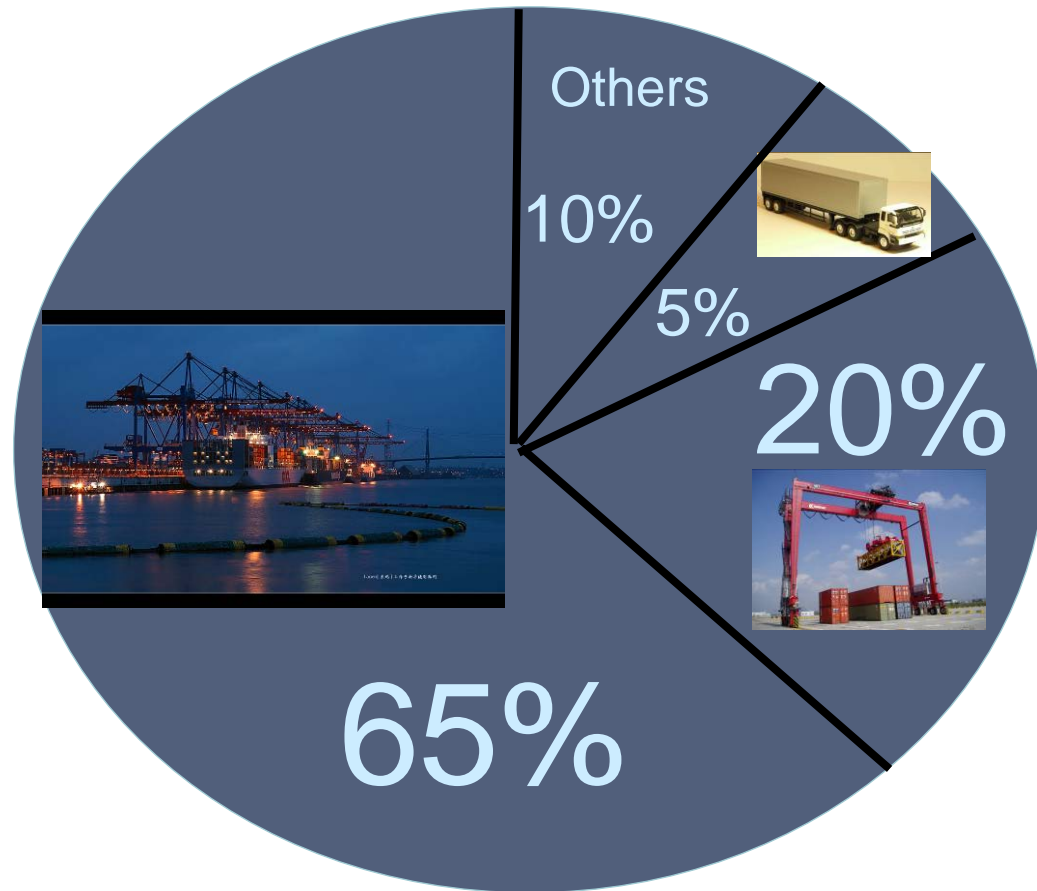


## Melting Glaciers and Polar Ice Caps



# Areas Of Concern

## EXHAUST EMISSIONS IN THE TERMINAL



# Ships at Berth

---

## AMP

- Definition

A program whereby a container vessel is powered via shore-supplied electrical power in lieu of the container vessel's on-board generators, during the period when the vessel is docked alongside the wharf.

- Environmentally Friendly

- Cost-Effective





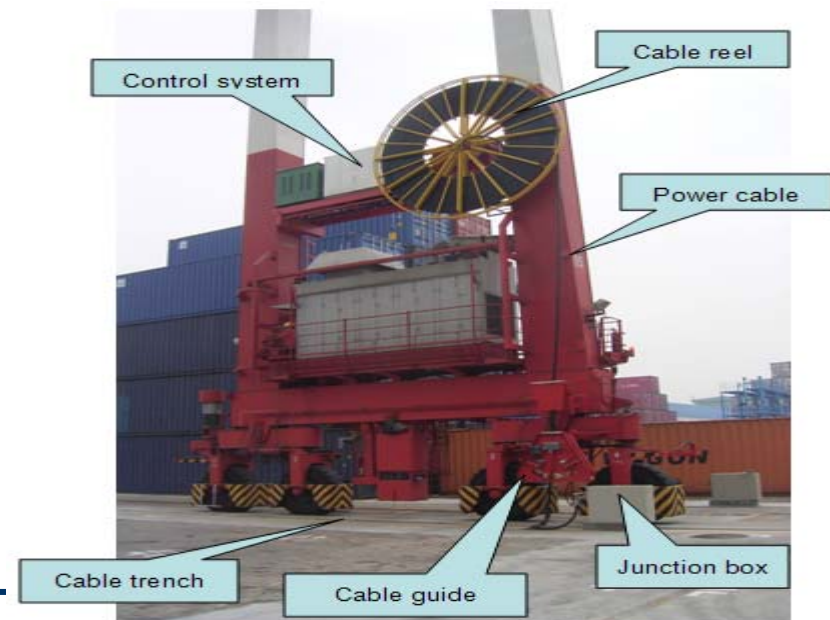
# Cargo Handling Equipment

## E-RTG

- Saves energy consumption costs by 70%.
- Ensures handling flexibility.
- Improves operating conditions.
- Saves on maintenance costs.



May 24, 2006, CMHI Ports (Shenzhen)



# Trucks and Vehicles at the Terminal

---

## Hybrid Tractors

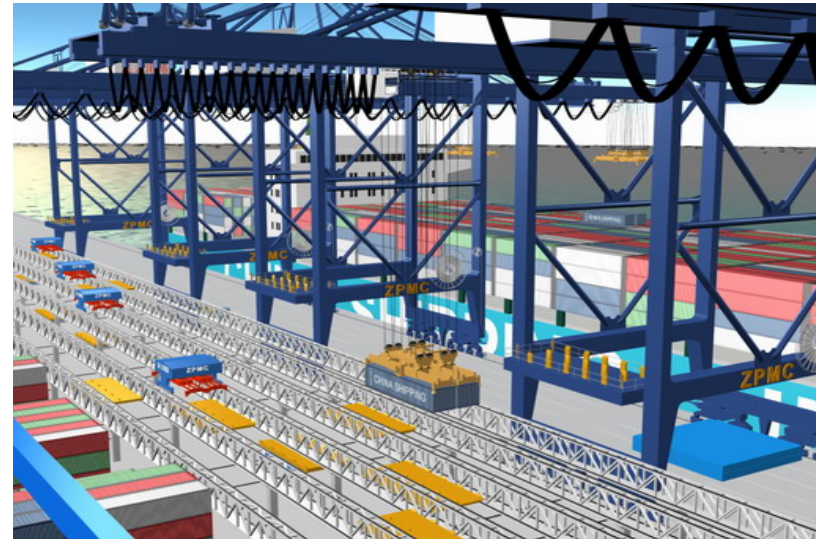
- In alignment with alternative power philosophy.
- Fuel conservation.
- 30% emissions reduction.
- 20% quieter.





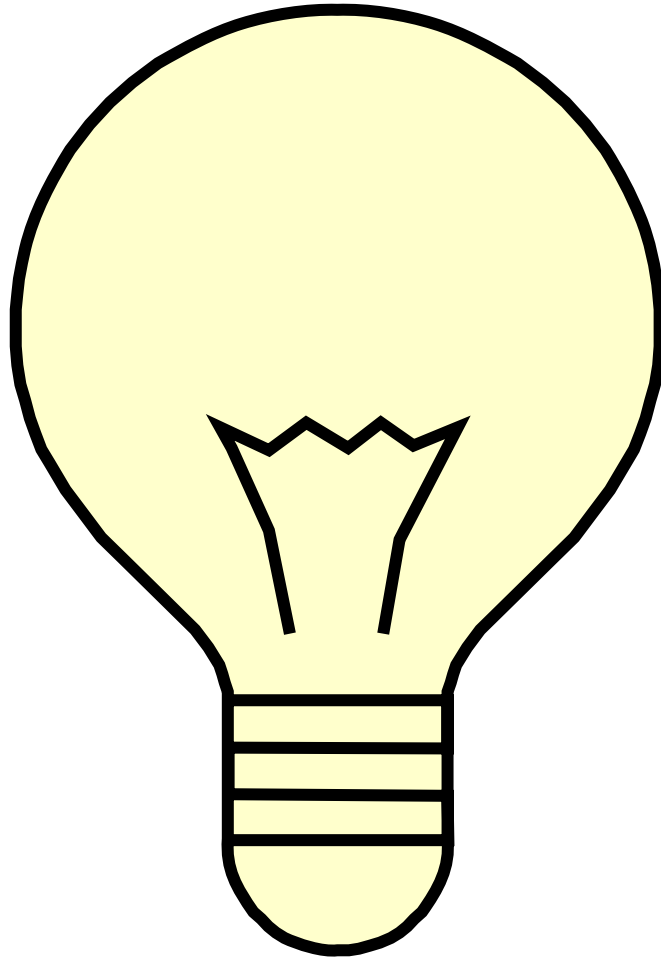
# Building A Green Port

- The choice of terminal location.
- Design and lay-out of terminal.
- Environmental consciousness.
- Employee participation.



# Conclusion

---



A change  
of mind  
set