

香港港口統計年報

2007

Port of Hong Kong Statistical Tables



中華人民共和國香港特別行政區海事處
Marine Department
Hong Kong Special Administrative Region
People's Republic of China

香 港 港 口
PORT OF HONG KONG
統 計 年 報
STATISTICAL TABLES
2007

有關本刊物的查詢，請聯絡：

海事處 策劃、發展協調及港口保安部 統計組

地址：中國香港中環統一碼頭道 38 號海港政府大樓 23 樓 2307 室

電話：(852) 2852 3661 圖文傳真：(852) 2542 4638

電子郵遞：st-sec@mardep.gov.hk

Enquiries about this publication can be directed to:

Statistics Section

Planning, Development & Port Security Branch

Marine Department

Address: Room 2307, 23/F, Harbour Building,

38 Pier Road, Central, Hong Kong, China.

Tel. No.: (852) 2852 3661 Fax. No.: (852) 2542 4638

E-mail: st-sec@mardep.gov.hk

政府海事處網頁

Home Page of the Marine Department

<http://www.mardep.gov.hk/>

同心協力，促進卓越海事服務

We are One in Promoting Excellence in Marine Services

目錄 CONTENTS

如欲進入統計表／附錄，請按下有關的藍色項目

To view the statistical tables/appendices, please click
the item in blue

	頁數 Page No.
註釋 EXPLANATORY NOTES	iv - vii
摘要 SUMMARY	viii
2002 至 2007 年 主要港口統計數字及每年增長率 Principal Port Statistics for 2002 - 2007 and Annual Growth Rates	
第一部 - 港口活動 PART I - Port Activities	
<i>抵港/離港的船次</i> <i>Vessel Arrivals/Departures</i>	
表 1 . 2007 年 按主要停泊地點分析抵港遠洋輪船的船次 TABLE 1 . Ocean Vessel Arrivals by Main Berthing Location, 2007	1
表 2 . 2007 年 按主要停泊地點分析離港遠洋輪船的船次 TABLE 2 . Ocean Vessel Departures by Main Berthing Location, 2007	1
表 3 . 2007 年 按船舶類型分析抵港船舶的船次 TABLE 3 . Vessel Arrivals by Ship Type, 2007	2
表 4 . 2007 年 按船旗分析抵港船舶的船次 TABLE 4 . Vessel Arrivals by Flag, 2007	3 - 4
表 5 . 2007 年 按船旗分析曾停靠香港的船舶數目和淨註冊噸位 TABLE 5 . Number and NRT of Vessels Calling Hong Kong by Flag, 2007	5 - 6
表 6 . 2007 年 按船舶類型分析離港船舶的平均在港停留時間 TABLE 6 . Average Time in Port for Vessels Departing Hong Kong by Ship Type, 2007	7
表 7 . 2007 年 靠泊貨櫃碼頭的遠洋輪船統計資料 TABLE 7 . Statistics on Ocean Vessels Calling Container Terminals, 2007	8
表 8 . 2007 年 按夏季吃水分析抵港遠洋輪船的船次 TABLE 8 . Ocean Vessel Arrivals by Summer Draft, 2007	9
表 9 . 2007 年 按船舶長度分析抵港遠洋輪船的船次 TABLE 9 . Ocean Vessel Arrivals by Vessel Length, 2007	9
表 10 . 2007 年 按主要來港原因分析抵港遠洋輪船的船次 TABLE 10 . Ocean Vessel Arrivals by Main Reason of Call, 2007	10
表 11 . 2007 年 跨境客運碼頭的抵港及離港航次統計資料 TABLE 11 . Statistics on Vessel Arrivals and Departures at Cross-Boundary Ferry Terminals, 2007	11 - 12
表 12 . 2007 年 按船舶類型分析香港過境船舶的船次 TABLE 12 . Number of Vessel Trips Transit Hong Kong by Ship Type, 2007	13

客運量

Passenger Throughput

表 13 . 2007 年 按跨境客運碼頭分析客運量	
TABLE 13 . Passenger Throughput by Cross-Boundary Ferry Terminals, 2007	14
表 14 . 2007 年 按航線分析抵港及離港乘客人次	
TABLE 14 . Passenger Arrivals and Departures by Routes, 2007	15 - 17

貨櫃/貨物吞吐量

Container/Cargo Throughput

表 15 . 2007 年 按主要貨物裝卸地點分析貨櫃吞吐量	
TABLE 15 . Container Throughput by Main Cargo Handling Location, 2007	18
表 16 . 2007 年 按貨櫃碼頭以外的主要貨物裝卸地點分析裝卸的貨櫃	
TABLE 16 . Containers Discharged/Loaded at Main Cargo Handling Locations Other than Container Terminals, 2007	19
表 17 . 2007 年 按貨物種類及運輸方式劃分的裝卸港口貨物	
TABLE 17 . Port Cargo Discharged/Loaded by Cargo Type and Mode of Transport, 2007	20

第二部 - 港口服務及管理
PART II - Port Services and Control

表 18 . 海港繫泊浮泡統計資料	
TABLE 18 . Harbour Mooring Buoys Statistics	21
表 19 . 2007 年 按分布地點分析香港私用繫泡數目	
TABLE 19 . Number of Private Moorings Laid in Hong Kong by Location, 2007	22 - 23
表 20 . 碇泊處一覽	
TABLE 20 . List of Anchorages	24 - 25
表 21 . 避風塘一覽	
TABLE 21 . List of Typhoon Shelters	26
表 22 . 公眾貨物裝卸區一覽	
TABLE 22 . List of Public Cargo Working Areas	27
表 23 . 垃圾收集、油污和檢控個案統計資料	
TABLE 23 . Refuse Collection, Oil Pollution and Prosecution Statistics	28
表 24 . 2007 年 底按噸位等級分析香港持牌船舶	
TABLE 24 . Hong Kong Licensed Vessels by Tonnage Classification, as at year end 2007	29 - 30

	頁數 Page No.
第三部 - 船舶服務 PART III - Shipping Services	
表 25 . 船舶安全監督統計資料 TABLE 25 . Ship Safety Statistics	31 - 33
表 26 . 本地船舶安全統計資料 TABLE 26 . Local Vessels Safety Statistics	34 - 39
表 27 . 海員發證、註冊和僱用統計資料 TABLE 27 . Seafarers' Certification, Registration and Employment Statistics	40 - 46
表 28 . 香港註冊船舶統計資料 TABLE 28 . Statistics on Ships Registered in Hong Kong	47 - 48
表 29 . 政府船隊統計資料 TABLE 29 . Government Fleet Statistics	49
表 30 . 政府船舶所屬部門及可用率 (截至 2007 年 12 月 31 日) TABLE 30 . Departmental Ownership and Availabilities of Government Vessels (as at 31 December 2007)	50
第四部 - 附錄 PART IV - Appendices	
A . 海事處組織架構圖 Marine Department Organization Chart	A1
B . 海事處的編制和實際員額 (截至 2007 年 12 月 31 日) Marine Department Establishment and Strength (as at 31 December 2007)	A2 - A5
C . 2007 年 海事處訓練組舉辦的課程 Training Courses Conducted by Training Section, Marine Department in 2007	A6 - A7
D . 2007 年 海事處訪客 Visitors of the Marine Department, 2007	A8 - A10
E . 2007 年 新訂海事法例 New Maritime Legislation, 2007	A11
F . 2007 年 輔航設備 Aids to Navigation, 2007	A12 - A17

1. 簡介

《香港港口統計年報》是香港海事處編制的港口及海事統計資料一覽表。

這本年報輯錄以下統計數字和資料：-

- 抵港/離港的船次
- 客運量
- 貨櫃/貨物吞吐量
- 港口服務及管理
- 船舶服務
- 海事處組織架構圖
(編制和實際員額)
- 海事處舉辦的課程
- 海事處訪客
- 新訂海事法例
- 輔航設備

2. 資料來源

船舶進出口統計

船舶進出口統計資料乃根據船公司或代理人向海事處申報船舶抵達/離開港口的資料時所遞交的申報表(MO 618 及 MO 618A)編製而成。(摘要、表一至十)

貨櫃統計資料

在貨櫃碼頭裝運的貨櫃統計資料，主要由碼頭經營者提供。不在貨櫃碼頭裝運的遠洋輪船「空」貨櫃統計資料，由海事處根據申報表 MO 618 及 MO 618A 編製。所有其他詳細的貨櫃統計資料，皆由政府統計處根據貨物艙單抽樣編製而成。(摘要、表十五至十七)

停泊/貨物裝卸地點

有關遠洋輪船的主要貨物裝卸區和主要停泊地點的資料，均取自海事處船舶交通管理系統所保存的船舶活動報告。(表一至二、表七、表十五至十七)

1. Introduction

The *Port of Hong Kong Statistical Tables* is a collection of Hong Kong Port and Maritime Statistics compiled by the Marine Department.

The publication brings together the following statistics and information: -

- Vessels Arrivals/Departures
- Passenger Throughput
- Container/Cargo Throughput
- Port Services and Control
- Shipping Services
- Marine Department Organization Chart
(Establishment and Strength)
- Training Courses Conducted by Marine Department
- Visitors to Marine Department
- New Maritime Legislation
- Aids to Navigation

2. Data Sources

Vessel Statistics

Vessel statistics are based on the declaration forms (MO 618 & MO 618A) submitted to Marine Department by shipping companies/agents for declaring arrivals/departures of vessels under their charge. (**Summary Table, Tables 1 – 10**)

Container Statistics

Statistics on container throughput handled at Container Terminals are mainly obtained from the terminal operators. Statistics on empty containers (ocean) handled at locations other than Container Terminals are compiled by Marine Department based on the declaration forms of MO 618 and MO 618A. As for all the other detailed container throughput statistics, they are compiled by Census and Statistics Department based on sampling of data in cargo manifests. (**Summary Table, Tables 15 – 17**)

Berthing/Cargo Handling Location

Information on the main cargo handling location and main berthing location in respect of ocean vessels are extracted from the trip activity report kept in the Marine Department's Vessel Traffic Management System. (**Tables 1 – 2, 7, 15 – 17**)

3. 用語及分類

容量

在本報告中，船舶的容量是以淨註冊噸位(計算單位為淨註冊噸)來表示。淨註冊噸位是由一艘船的船殼內的容量(以立方呎計)，加上在甲板上用以裝載貨物、貯藏品及乘客的空間，再減去船長、高級船員、船員所住的地方、燃料、導航及推進器所佔用的地方。每一淨註冊噸相等於一百立方呎的容量。

貨物裝卸地點

在本報告中，貨物裝卸地點的分類是「貨櫃碼頭」、「泊位和倉庫碼頭(包括公眾貨物裝卸區)」、「碇泊處」和「浮泡」。

貨櫃吞吐量

這是指以標準貨櫃單位計算的貨櫃搬運數目。一個標準貨櫃單位等同一個二十呎貨櫃的容量。

船旗

這是指船舶的國籍，表明其正式註冊的地方。香港在一九九二年正式開始船舶註冊制度。一九九七年七月一日起，香港特別行政區經中央人民政府授權繼續進行船舶註冊，並根據香港特別行政區的法律以「中國香港」的名義頒發有關證件。

內河航限

內河航限是指香港鄰近水域，一般指香港與珠江、大鵬灣及澳門，及其他在廣東和廣西與香港鄰近水域相連的內陸水域。內河航限的精確定義是指以下範圍內的水域：

- 東至東經 114°30'；
- 南至北緯 22°09'；及
- 西至東經 113°31'。

船舶類型

這是指船舶的特定用途，分為十八類：化學品運載船、普通貨船、散裝乾貨船、漁船/魚類加工船、全槽格式貨櫃船、液化氣體運載船、躉船/駁船/貨艇、礦沙/散貨/油類混用船、油輪、客輪(郵船)、客輪(定期)、遊樂船舶、滾裝卸式船、半貨櫃船、拖船、其他貨船、其他液體船及其他。

3. Terms and Classifications

Capacity

In this report, the capacity of a vessel is expressed in terms of net registered tonnage (the unit of measurement is net registered ton, NRT). Net registered tonnage (NRT) is, broadly, the capacity of a ship in cubic feet of the space within the hull, and of the enclosed space above the deck available for cargo, stores and passengers but excluding space used for the accommodation of the master, officers, crew, fuel, navigation and propelling machinery. One net registered ton is equivalent to 100 cubic feet of capacity.

Cargo Handling Location

The types of cargo handling location shown in this report are “container terminals”, “berths and wharves (including public cargo working areas)”, “anchorage” and “buoys”.

Container Throughput

This refers to the number of movement of cargo containers in TEU terms. A TEU stands for a twenty-foot equivalent unit.

Flag

This is the nationality of the vessel, indicating where she is officially registered. In Hong Kong, the official vessel registration system was set up in 1992. As from 1.7.1997, the Hong Kong Special Administrative Region is authorized by the Central People's Government to continue to maintain a shipping register and issue related certificates under its legislation, using the name 'Hong Kong, China'.

River Trade Limits

River trade limits mean the waters in the vicinity of Hong Kong, which broadly include the Pearl River, Mirs Bay and Macao, and other inland waters in Guangdong and Guangxi which are accessible from waters in the vicinity of Hong Kong. The precise definition of River Trade Limits refer to waters within the following boundaries:

- to the East, meridian 114°30' East;
- to the South, parallel 22°09' North; and
- to the West, meridian 113°31' East.

Ship Type

This refers to the known specific function of the ship. Eighteen types of ship are distinguished: chemical carrier/tanker, conventional cargo vessel, dry bulk carrier, fishing/fish processing vessel, fully cellular container vessel, gas carrier/tanker, lighter/barge/cargo junk, ore/bulk/oil carrier, oil tanker, passenger vessel (cruising), passenger vessel (schedule), pleasure vessel, roll on/roll off, semi-container vessel, tug, other cargo vessel, other fluid carrier and others.

4. 資料定義

內河船舶

根據《船舶及港口管制條例》(第 313 章)所訂，內河船舶是指進出香港與內河航限內的港口之間的船舶。(摘要、表三至六和十一)

停泊地點

船舶在進入香港水域後可能停泊超過一個停泊地點。若船舶來港的主要原因是裝卸貨物，則主要的貨物裝卸地點和主要的停泊地點是指最為昂貴的地點，當中以貨櫃碼頭居首位，隨後是泊位和倉庫碼頭(包括公眾貨物裝卸區)、碇泊處和浮泡。若船舶來港的主要原因不是裝卸貨物，主要停泊地點為停留時間最長的地點。(表一至二、表七、表十五和十六)

內河客船

內河客船的抵港次數是指船舶停泊於港澳客運碼頭、中國客運碼頭、屯門客運碼頭和海天客運碼頭的次數。(摘要、表三至五和十一)

停泊於這四個碼頭的船次與實際的抵港船次會有輕微偏差，因為船舶可能同一次航程中停泊超過一個客運碼頭。

5. 資料限制

遠洋客船數字包括在內河航限以外水域行駛的遊樂船舶。但是，由於有些船主/代理人沒有申報這些船舶的淨註冊噸位資料給海事處，故遠洋客船的淨註冊噸位數字可能輕微低於實際的數字。(摘要、表一至五)

由於不能準確地統計本地持牌遊樂船舶和漁船來往香港及內河航限內的船次，故這兩類船舶沒有包括在內河船舶統計範圍內。(摘要、表三至六)

6. 計量單位

DWT = 載重(噸)
GRT = 總註冊噸位
LOA = 船總長度
NRT = 淨註冊單位
TEU = 二十呎標準貨櫃單位

4. Data Definitions

River Vessels

In accordance with the Shipping and Port Control Ordinance, Cap. 313, Laws of Hong Kong, river vessels refer to those travelling between Hong Kong and ports that are within the river trade limits. (Summary Table, Tables 3 – 6 and 11)

Berthing Locations

A vessel may berth at more than one locations after entering into Hong Kong waters. If the main reason of call of the vessel is for loading/discharging cargo, both the main cargo handling location and the main berthing location refer to the most costly location, with Container Terminals ranked first, followed by Berths and Wharves (including Public Cargo Working Areas), Anchorages and Buoys. If the main reason of call is not for loading/discharging cargo, the main berthing location refers to the one with the longest stay. (Tables 1 – 2, 7, 15 and 16)

River Passenger Vessels

The figures on arrivals of river passenger vessels refer to the number of berthings at the Macau Ferry Terminal, the China Ferry Terminal, the Tuen Mun Ferry Terminal and the SkyPier. (Summary Table, Tables 3 – 5 and 11)

The number of berthings at these 4 terminals are slightly different from the actual number of arrivals because a ship may berth at more than one terminal in a single trip.

5. Data Limitations

The number of ocean passenger vessels includes pleasure vessels plying beyond the river trade limits. However, as some of their owners/agents do not report NRT information to Marine Department, the total NRT for ocean passenger vessels may be slightly under-reported. (Summary Table, Tables 1 – 5)

As accurate number of trips of locally licensed pleasure vessels and fishing vessels plying between Hong Kong and the river trade limits is not available, these two categories of vessels are not included in the river vessel statistics. (Summary Table, Tables 3 – 6)

6. Units of Measurement

DWT = Deadweight [Tonnage]
GRT = Gross Registered Tonnage
LOA = Length Overall
NRT = Net Registered Tonnage
TEU = Twenty-foot Equivalent Unit

7. 數字的捨入

船舶統計數字計算至最接近的十位，淨註冊噸位、貨物和貨櫃吞吐量是計算至最接近的千位，而客運統計數字計算至最接近的百位。

項目	單位
船舶數目	十位
貨物吞吐量	千公噸
貨櫃吞吐量	千個標準貨櫃單位
淨註冊單位	千噸
客運數目	百位

由於進位關係，本報告中所列的個別數字之和可能不等於其總數。但變動百分率和比重百分率則以未經進位的數字計出。

8. 代號

- () 與去年同期比較的變動百分率
- ※ 多於 1000%
- 0 少於 0.05%
- ^ 少於 5 船次；少於 5 船舶
- † 少於 500 個標準貨櫃單位；
少於 500 人次；
少於 500 噸
- # 臨時數字
- * 修訂數字
- { } 年底時的估計數字
- N.A. 沒有數字
- 不適用

策劃、發展協調及港口保安部
統計組

二零零八年五月

7. Rounding of Figures

Statistics on the number of vessel are rounded to the nearest ten, those on net register tonnage, cargo and container throughput are rounded to the nearest thousand and those on passenger statistics are rounded to nearest hundred.

Items	Units
No. of Vessels	ten units
Cargo Throughput	'000 tonnes
Container Throughput	'000 TEUs
NRT	'000 tons
Passenger Statistics	hundred units

Figures shown in this report may not add up to the respective totals due to rounding. However, percentage changes and percentage shares are calculated from unrounded figures.

8. Symbols

- () % changes over the same period of preceding year
- ※ More than 1000%
- 0 Less than 0.05%
- ^ Less than 5 trips; Less than 5 ships
- † Less than 500 TEUs;
Less than 500 passengers;
Less than 500 tonnes
- # Provisional figures
- * Revised figures
- { } Estimates as at year end
- N.A. Not available
- Not applicable

Statistics Section
Planning, Development & Port Security Branch

May 2008

摘要
SUMMARY

2002 至 2007 年主要港口統計數字及每年增長率
Principal Port Statistics for 2002 – 2007 and Annual Growth Rates

項目 Item	2002	2006	2007	每年增長率 Annual Growth Rates	
				2006-2007	2002-2007 ⁽¹⁾
1. 抵港船次 Number of Vessel Arrivals	218 490	230 960	228 010	-1.3%	+0.9%
(a) 遠洋輪船 Ocean Vessel	35 620	39 020	37 150	-4.8%	+0.8%
貨船 Cargo Vessel	32 830	35 490	33 460	-5.7%	+0.4%
客船 Passenger Vessel	2 790	3 520	3 690	+4.7%	+5.8%
(b) 內河船舶 River Vessel	182 870	191 940	190 860	-0.6%	+0.9%
貨船 Cargo Vessel	119 520	116 140	108 950	-6.2%	-1.8%
客船 Passenger Vessel	63 340	75 810	81 910	+8.1%	+5.3%
2. 抵港船舶的淨註冊噸位(千噸) N.R.T. of Vessel Arrivals ('000 tons)	372 415	456 403	475 258	+4.1%	+5.0%
(a) 遠洋輪船 Ocean Vessel	295 285	346 645	372 488	+7.5%	+4.8%
(b) 內河船舶 River Vessel	77 130	109 757	102 770	-6.4%	+5.9%
3. 貨櫃吞吐量(千個標準貨櫃單位) Container Throughput ('000 TEUs)	19 144	23 539	23 998	+2.0%	+4.6%
(i) 按停泊地點分析 By Berthing Location					
貨櫃碼頭 Container Terminals	11 892	16 048	17 322	+7.9%	+7.8%
貨櫃碼頭以外 Other than Container Terminals	7 252	7 491	6 677	-10.9%	-1.6%
(ii) 按運輸方式分析 By Mode of Transport					
遠洋 Ocean	13 910	16 011	16 913	+5.6%	+4.0%
內河 River	5 234	7 528	7 085	-5.9%	+6.2%
4. 貨物吞吐量(千公噸) Cargo Throughput ('000 tonnes)	192 510	238 238	245 433	+3.0%	+5.0%
(a) 海運 Seaborne	138 301	166 208	177 347	+6.7%	+5.1%
(b) 河運 River	54 210	72 031	68 086	-5.5%	+4.7%
5. 停泊於港澳客運碼頭、中國客運碼頭及屯門客運碼頭的客運量 (不包括乘搭直升機之乘客) Total Passenger Throughput for the Ferry Berthing at MFT, CFT and TMFT (Excluding Passengers Carried by Helicopter)	18 666 900	21 124 500	23 877 000	+13.0%	+5.0%
(a) 澳門 Macau	11 468 000	14 347 300	16 840 000	+17.4%	+8.0%
(b) 中國內地 The Mainland of China	7 022 700	6 479 100	6 719 000	+3.7%	-0.9%
(c) 其他 Others	175 200	298 100	318 400	+6.8%	+12.7%

註釋： (1) 複合平均增長率

Note: (1) Average annual compound growth rate

統計表
Statistical
Tables

表 1
TABLE 1

2007 年按主要停泊地點分析抵港遠洋輪船的船次
Ocean Vessel Arrivals by Main Berthing Location, 2007

主要停泊地點 Main Berthing Location	主要船舶類別 Main Vessel Category								總計 Total			
	貨船 Cargo Vessels				客船 Passenger Vessels							
	抵港船次 No. of Vessel Arrivals		淨註冊噸位 (千噸) NRT ('000)		抵港船次 No. of Vessel Arrivals		淨註冊噸位 (千噸) NRT ('000)		抵港船次 No. of Vessel Arrivals		淨註冊噸位 (千噸) NRT ('000)	
	%		%		%		%		%		%	
貨櫃碼頭 Container Terminals	13 330	(+9.7)	249 299	(+11.3)	10	(+100.0)	493	(+108.4)	13 340	(+9.8)	249 792	(+11.4)
泊位和倉庫碼頭 Berths and Wharves	5 550	(+5.7)	20 031	(-6.4)	1 750	(+0.6)	22 149	(+39.5)	7 310	(+4.5)	42 180	(+13.1)
碇泊處 Anchorages	14 040	(-19.7)	67004	(-8.2)	60	(+5.3)	27	(-24.1)	14 100	(-19.6)	67 031	(-8.2)
浮泡 Buoys	530	(-10.7)	2 416	(-11.7)	1 870	(+8.7)	11 069	(+19.2)	2 400	(+3.7)	13 485	(+12.1)
總計 Total	33 460	(-5.7)	338 750	(+5.5)	3 690	(+4.7)	33 737	(+32.6)	37 150	(-4.8)	372 488	(+7.5)

表 2
TABLE 2

2007 年按主要停泊地點分析離港遠洋輪船的船次
Ocean Vessel Departures by Main Berthing Location, 2007

主要停泊地點 Main Berthing Location	主要船舶類別 Main Vessel Category								總計 Total			
	貨船 Cargo Vessels				客船 Passenger Vessels							
	離港船次 No. of Vessel Departures		淨註冊噸位 (千噸) NRT ('000)		離港船次 No. of Vessel Departures		淨註冊噸位 (千噸) NRT ('000)		離港船次 No. of Vessel Departures		淨註冊噸位 (千噸) NRT ('000)	
	%		%		%		%		%		%	
貨櫃碼頭 Container Terminals	13 550	(+5.8)	257 270	(+8.5)	10	(+100.0)	493	(+108.4)	13 550	(+5.8)	257 763	(+8.6)
泊位和倉庫碼頭 Berths and Wharves	6 600	(+48.4)	16 696	(+12.1)	1 770	(+4.2)	22 269	(+40.1)	8 370	(+36.1)	38 965	(+26.6)
碇泊處 Anchorages	12 920	(-28.8)	60 346	(-11.5)	90	(-38.8)	26	(-28.2)	13 000	(-28.9)	60 372	(-11.5)
浮泡 Buoys	470	(-2.3)	2 278	(+0.8)	1 870	(+8.8)	11 089	(+19.1)	2 350	(+6.3)	13 367	(+15.5)
總計 Total	33 530	(-6.5)	336 590	(+4.4)	3 740	(+4.8)	33 877	(+33.0)	37 270	(-5.5)	370 467	(+6.5)

表3
TABLE 3

2007年按船舶類型分析抵港船舶的船次
Vessel Arrivals by Ship Type, 2007

船舶類型 Ship Type	遠洋輪船 Ocean Vessels		內河船舶 River Vessels		總計 Total	
	抵港船次 No. of Vessel Arrivals	比重百分率 Percentage Share	抵港船次 No. of Vessel Arrivals	比重百分率 Percentage Share	抵港船次 No. of Vessel Arrivals	比重百分率 Percentage Share
	(%)		(%)		(%)	
運車船 Car Carrier	20 (-10.5)	0%	^ (-)	0%	20 (-10.0)	0%
化學品運載船 Chemical Carrier/Tanker	450 (+12.7)	1.2%	250 (-11.6)	0.1%	700 (+2.6)	0.3%
普通貨船 Conventional Cargo Vessel	4 660 (-26.2)	12.6%	16 000 (-16.0)	8.4%	20 670 (-18.5)	9.1%
其他貨船 Other Cargo Vessel	0 (0)	0%	230 (-5.7)	0.1%	230 (-5.7)	0.1%
郵船/渡輪 ⁽¹⁾ Cruise/Ferry ⁽¹⁾	3 560 (+4.4)	9.6%	81 910 (+8.1)	42.9%	85 480 (+7.9)	37.5%
散裝乾貨船 Dry Bulk Carrier	1 360 (+0.4)	3.7%	1 310 (+8.0)	0.7%	2 670 (+4.0)	1.2%
漁船/魚類加工船 Fishing/Fish Processing Vessel	510 (-11.8)	1.4%	-	-	-	-
全槽格式貨櫃船 Fully Cellular Container Vessel	23 560 (-2.1)	63.4%	70 880 (-1.9)	37.1%	94 440 (-2.0)	41.4%
液化氣體運載船 Gas Carrier/Tanker	340 (+2.4)	0.9%	30 (-34.7)	0%	370 (-2.4)	0.2%
駁船/躉船/貨艇 Lighter/Barge/Cargo Junk	150 (+53.5)	0.4%	10 220 (-15.3)	5.4%	10 380 (-14.7)	4.6%
礦沙散貨油類混用船 OBO (Ore, Bulk, Oil) Carrier	^ (-84.2)	0%	10 (-54.5)	0%	10 (-73.3)	0%
油輪 Oil Tanker	1 400 (+0.2)	3.8%	1 080 (-10.9)	0.6%	2 480 (-4.9)	1.1%
其他液體運載船 Other Fluid Carrier	0 (0)	0%	10 (-25.0)	0%	10 (-25.0)	0%
遊樂船舶 Pleasure Vessel	130 (+15.5)	0.3%	-	-	-	-
滾裝卸式船 Roll On/Roll Off	440 (-5.9)	1.2%	10 (+50.0)	0%	450 (-5.5)	0.2%
半貨櫃船 Semi-container Vessel	190 (+38.7)	0.5%	960 (+36.7)	0.5%	1 150 (+37.0)	0.5%
拖船 Tug	250 (+34.6)	0.7%	7 580 (-13.9)	4.0%	7 830 (-12.9)	3.4%
其他 Others	120 (+5.5)	0.3%	380 (+66.5)	0.2%	490 (+46.6)	0.2%
總計 Total	37 150 (-4.8)	100.0%	190 860 (-0.6)	100.0%	228 010 (-1.3)	100.0%

^ 少於5船次
^ Less than 5 trips

註釋：(1) 數字已包括於二零零六年十一月啓用之屯門客運碼頭的統計。

Note: (1) The figures have included the statistics for Tuen Mun Ferry Terminals which came into operation in November 2006.

表 4
TABLE 4

2007 年按船旗分析抵港船舶的船次
Vessel Arrivals by Flag, 2007

船旗 Flag	遠洋輪船 Ocean Vessels				內河船舶 River Vessels				總計 Total			
	抵港船次 No. of Vessel Arrivals		淨註冊噸位 (千噸位) NRT ('000)		抵港船次 No. of Vessel Arrivals		淨註冊噸位 (千噸位) NRT ('000)		抵港船次 No. of Vessel Arrivals		淨註冊噸位 (千噸位) NRT ('000)	
	(%)	(%)	(%)	(%)	(%)	(%)	(%)	(%)	(%)	(%)	(%)	
安提瓜和巴布達 Antigua and Barbuda	920	(-1.4)	7 405	(+7.4)	60	(-18.7)	527	(-17.5)	980	(-2.7)	7 932	(+5.2)
巴哈馬 Bahamas	1 660	(+13.8)	16 671	(+46.3)	40	(+50.0)	958	(+94.8)	1 700	(+14.5)	17 629	(+48.3)
伯利茲 Belize	270	(-12.6)	329	(-10.7)	40	(-57.4)	47	(-63.1)	310	(-23.1)	376	(-24.1)
柬埔寨 Cambodia	170	(+125.7)	370	(+147.0)	40	(+135.3)	99	(+311.2)	210	(+127.5)	469	(+169.7)
中國內地 The Mainland of China	7 870	(-11.4)	14 005	(-14.6)	125 000	(+0.3)	53 179	(+3.4)	132 850	(-0.5)	67 185	(-1.0)
賽浦路斯 Cyprus	620	(-14.1)	7 324	(-4.9)	40	(-4.4)	909	(+37.0)	670	(-13.5)	8 233	(-1.6)
丹麥 Denmark	230	(-21.5)	11 247	(-12.1)	10	(+33.3)	424	(+119.9)	250	(-19.9)	11 671	(-10.2)
法國 France	120	(+3.4)	5 177	(+9.2)	30	(-3.8)	993	(-14.8)	150	(+2.1)	6 170	(+4.4)
德國 Germany	950	(-8.5)	24 534	(+1.6)	40	(-23.5)	895	(-23.8)	990	(-9.2)	25 429	(+0.4)
希臘 Greece	200	(-25.0)	5 322	(-32.3)	10	(+10.0)	249	(+39.0)	210	(-23.7)	5 571	(-30.7)
香港 Hong Kong	2 340	(+24.5)	27 699	(+28.3)	63 380	(-1.4)	22 900	(+2.0)	65 720	(-0.7)	50 599	(+14.9)
印度 India	70	(+19.6)	830	(+24.5)	10	(+12.5)	151	(+41.9)	80	(+18.8)	981	(+26.9)
以色列 Israel	90	(-4.3)	1 738	(-6.4)	^	(+200.0)	101	(+512.7)	90	(-2.1)	1 839	(-1.8)
意大利 Italy	140	(+57.3)	2 548	(+53.1)	10	(+50.0)	123	(+96.3)	150	(+57.0)	2 671	(+54.6)
日本 Japan	50	(+8.5)	811	(-5.6)	^	(+100.0)	43	(+93.6)	50	(+10.4)	854	(-3.2)
南韓 Republic of Korea	1 050	(-1.8)	6 387	(-12.2)	180	(+3.4)	484	(+0.4)	1 230	(-1.0)	6 871	(-11.4)
利比里亞 Liberia	3 100	(+23.3)	57 970	(+24.9)	240	(+2.6)	4 581	(-28.3)	3 330	(+21.5)	62 551	(+18.5)

表 4 – 續
TABLE 4 – Cont'd

船旗 Flag	遠洋輪船 Ocean Vessels		內河船舶 River Vessels		總計 Total	
	抵港船次 No. of Vessel Arrivals	淨註冊噸位 (千噸位) NRT ('000)	抵港船次 No. of Vessel Arrivals	淨註冊噸位 (千噸位) NRT ('000)	抵港船次 No. of Vessel Arrivals	淨註冊噸位 (千噸位) NRT ('000)
	(%)	(%)	(%)	(%)	(%)	(%)
馬來西亞 Malaysia	310 (-23.8)	2 402 (-3.5)	20 (-18.5)	208 (+56.6)	330 (-23.4)	2 610 (-0.5)
馬耳他 Malta	180 (-39.7)	2 380 (-25.9)	10 (-42.9)	135 (-49.4)	190 (-39.9)	2 515 (-27.7)
荷蘭 Netherlands	170 (+3.6)	3 732 (+7.9)	10 (-25.0)	94 (+42.3)	180 (+2.3)	3 825 (+8.6)
挪威 Norway	80 (+74.4)	1 402 (+88.0)	10 (-35.7)	123 (-36.2)	80 (+47.4)	1 525 (+62.5)
巴拿馬 Panama	9 470 (+0.4)	107 336 (+11.5)	1 290 (-27.1)	11 125 (-42.7)	10 750 (-3.9)	118 461 (+2.4)
菲律賓 Philippines	70 (-34.3)	910 (-12.8)	10 (+66.7)	178 (+22.2)	80 (-28.6)	1 089 (-8.5)
新加坡 Singapore	2 180 (-1.7)	22 402 (+13.1)	100 (-13.3)	661 (-7.7)	2 270 (-2.3)	23 063 (+12.4)
聖文森特和 格林納丁斯 St. Vincent and the Grenadines	250 (-13.2)	1 829 (-15.5)	70 (-29.5)	585 (-33.0)	320 (-17.2)	2 414 (-20.5)
台灣 Taiwan	1 800 (-44.6)	2 803 (-16.0)	^ (-100.0)	† (-100.0)	1 800 (-44.6)	2 803 (-16.0)
泰國 Thailand	230 (+6.5)	990 (-19.0)	10 (-66.7)	18 (-67.3)	230 (+1.7)	1 008 (-21.1)
圖瓦盧 Tuvalu	170 (+96.5)	196 (-3.6)	30 (+26.1)	37 (-52.9)	200 (+81.5)	232 (-17.3)
英國 United Kingdom	730 (+3.6)	17 694 (+4.7)	60 (+51.4)	1 405 (+56.3)	780 (+5.9)	19 099 (+7.3)
美國 USA	140 (-4.1)	3 304 (-4.9)	10 (+50.0)	149 (+61.2)	150 (-1.9)	3 453 (-3.1)
馬紹爾群島 Marshall Islands	1 010 (-9.0)	9 996 (-24.2)	60 (+72.7)	676 (+73.9)	1 070 (-6.6)	10 673 (-21.3)
越南 Vietnam	160 (+18.0)	620 (+22.2)	10 (-17.6)	88 (-10.5)	170 (+14.0)	708 (+16.9)
其他 ⁽¹⁾ Others ⁽¹⁾	380 (-54.3)	4 123 (-41.4)	80 (-31.6)	627 (-14.5)	460 (-50.5)	4 750 (-37.8)
總計 Total	37 150 (-4.8)	372 488 (+7.5)	190 860 (-0.6)	102 770 (-6.4)	228 010 (-1.3)	475 258 (+4.1)

^ 少於 5 船次

† 少於 500 噸

^ Less than 5 trips

† Less than 500 tonnes

註釋： (1) 包括所有在二零零七年抵港船次總數少於五十船次的旗號。

Note: (1) Including those flags of which their total number of vessel arrivals were less than 50 in 2007.

表 5
TABLE 5

2007 年按船旗分析曾停靠香港的船舶數目和淨註冊噸位
Number and NRT of Vessels Calling Hong Kong by Flag, 2007

船旗 Flag	遠洋輪船 Ocean Vessels				內河船舶 River Vessels			
	船舶數目 Number of Vessels		淨註冊噸位 (千噸) NRT ('000)		船舶數目 Number of Vessels		淨註冊噸位 (千噸) NRT ('000)	
	(%)		(%)		(%)		(%)	
安提瓜和巴布達 Antigua and Barbuda	120	(+16.8)	1 058	(+19.2)	30	(-14.7)	311	(-0.3)
巴哈馬 Bahamas	140	(-1.5)	2 261	(+4.2)	20	(+27.8)	432	(+45.9)
伯利茲 Belize	60	(-21.8)	83	(-20.9)	20	(-33.3)	23	(-39.2)
柬埔寨 Cambodia	60	(+59.5)	140	(+62.5)	22	(+57.1)	54	(+165.1)
中國內地 The Mainland of China	470	(-10.5)	2 675	(-7.3)	1 540	(-2.5)	1 884	(-0.6)
塞浦路斯 Cyprus	100	(-21.2)	1 429	(-26.0)	30	(-15.2)	419	(-19.9)
丹麥 Denmark	50	(-6.3)	1 968	(+2.0)	10	(+11.1)	325	(+68.3)
法國 France	20	(+4.8)	847	(+7.3)	10	(-23.1)	407	(-28.5)
德國 Germany	150	(-8.6)	3 809	(-2.3)	30	(-8.8)	754	(+0.9)
希臘 Greece	50	(-25.0)	1 299	(-21.7)	10	(+83.3)	249	(+95.3)
香港 Hong Kong	380	(+8.1)	4 168	(+15.0)	670	(-0.9)	2 066	(+49.9)
印度 India	20	(+5.3)	378	(+42.7)	10	(0)	135	(+27.1)
意大利 Italy	40	(+59.1)	654	(+63.5)	10	(+25.0)	107	(+71.8)
日本 Japan	20	(+18.8)	180	(-33.3)	^	(+100.0)	43	(+93.6)
南韓 Republic of Korea	170	(+11.3)	776	(-21.3)	60	(+3.8)	209	(-9.6)
利比里亞 Liberia	470	(+10.5)	9 480	(+10.4)	130	(+1.5)	2 623	(+3.8)
馬來西亞 Malaysia	50	(-18.2)	679	(+38.5)	20	(-20.0)	104	(+8.8)
馬耳他 Malta	60	(-17.8)	944	(-2.8)	10	(-25.0)	135	(-20.6)

表 5 – 續
TABLE 5 – Cont'd

船旗 Flag	遠洋輪船 Ocean Vessels				內河船舶 River Vessels			
	船舶數目 Number of Vessels		淨註冊噸位 (千噸) NRT ('000)		船舶數目 Number of Vessels		淨註冊噸位 (千噸) NRT ('000)	
	(%)	(%)	(%)	(%)	(%)	(%)	(%)	(%)
荷蘭 Netherlands	30	(0)	595	(+9.6)	^	(-20.0)	84	(+69.5)
挪威 Norway	30	(-3.7)	418	(-14.6)	10	(-10.0)	123	(-11.5)
巴拿馬 Panama	1 200	(+2.0)	14 995	(+6.5)	390	(+0.5)	4 683	(-5.4)
菲律賓 Philippines	20	(-17.4)	280	(-7.7)	10	(+80.0)	149	(+27.8)
新加坡 Singapore	300	(+11.8)	4 002	(+31.7)	80	(+7.1)	541	(+14.0)
聖文森特和 格林納丁斯 St. Vincent and the Grenadines	60	(-16.9)	431	(-22.2)	10	(0)	99	(-23.0)
台灣 Taiwan	160	(-18.5)	209	(-45.2)	^	(-100.0)	†	(-100.0)
泰國 Thailand	30	(-24.4)	122	(-21.8)	10	(-58.3)	18	(-64.8)
圖瓦盧 Tuvalu	40	(+14.7)	73	(-17.0)	20	(+25.0)	18	(-38.9)
英國 United Kingdom	160	(-1.2)	3 592	(+1.9)	50	(+28.6)	1 063	(+24.9)
美國 USA	30	(+13.6)	416	(+7.2)	10	(+33.3)	138	(+49.5)
馬紹爾群島 Marshall Islands	150	(+10.1)	2 396	(+6.5)	30	(+10.3)	379	(+6.5)
越南 Vietnam	40	(+2.6)	163	(+23.7)	10	(-25.0)	21	(-8.4)
其他 ⁽¹⁾ Others ⁽¹⁾	140	(-35.0)	1 355	(-45.3)	50	(-5.9)	558	(+17.2)
總計 Total	4 790	(-0.7)	61 875	(+3.9)	3 290	(-1.1)	18 154	(+6.7)

^ 少於 5 船舶

† 少於 500 噸

^ Less than 5 ships

† Less than 500 tonnes

備註：此表內的遠洋輪船及內河船舶數目不能直接地加在一起，因為同一艘船舶在一年內可能會被歸納於遠洋及內河船舶類別，視乎該船舶在該年度不同的抵港旅程是否超越內河航限而定。

Remark: The number of ocean vessels and river vessels in this table cannot be grouped together by simple addition as the same vessel may be classified as ocean and river vessel during a year depending whether her trips to Hong Kong in that year were beyond the river trade limit or not.

註釋：(1) 包括所有在二零零七年抵港船舶總數少於二十船舶的旗號。

Note: (1) Including those flags of which their total number of vessels calling Hong Kong were less than 20 in 2007.

表 6
TABLE 6

2007 年按船舶類型分析離港船舶的平均在港停留時間
Average Time in Port for Vessels Departing Hong Kong by Ship Type, 2007

小時
Hours

船舶類型 Ship Type	遠洋輪船 Ocean Vessels	內河船舶 River Vessels	總計 Total
化學品運載船 Chemical Carrier/Tanker	13	28	18
普通貨船 Conventional Cargo Vessel	38	30	32
郵船/渡輪 Cruise/Ferry	10	N.A.	N.A.
散裝乾貨船 Dry Bulk Carrier	36	22	30
漁船/魚類加工船 Fishing/Fish Processing Vessel	98	-	-
全槽格式貨櫃船 Fully Cellular Container Vessel	22	34	31
液化氣體運載船 Gas Carrier/Tanker	46	9	44
躉船/駁船/貨艇 Lighter/Barge/Cargo Junk	112	69	70
油輪 Oil Tanker	22	59	37
滾裝卸式船 Roll On/Roll Off	16	9	15
半貨櫃船 Semi-container Vessel	29	43	41
拖船 Tug	92	68	69
其他 Others	66	19	28
所有船舶類型 All Ship Type	26	39	36

表 7
TABLE 7

2007 年靠泊貨櫃碼頭的遠洋輪船統計資料
Statistics on Ocean Vessels Calling Container Terminals, 2007

項目 Item	數目 Number	比重百分率 Percentage Share
	(%)	
在貨櫃碼頭處理貨櫃的遠洋輪船船次 Ocean Vessel Arrivals with Containers Handled in Container Terminals	13 390 (+10.0)	100.0%
- 按載重噸分析 - Analysed by Deadweight (DWT)		
少於 10 000 載重噸 Under 10 000 DWT	980 (+22.7)	7.4%
10 000 - 19 999 載重噸 10 000 - 19 999 DWT	2 380 (+7.2)	17.8%
20 000 - 29 999 載重噸 20 000 - 29 999 DWT	2 280 (+11.2)	17.0%
30 000 - 39 999 載重噸 30 000 - 39 999 DWT	1 760 (+5.8)	13.1%
40 000 - 49 999 載重噸 40 000 - 49 999 DWT	1 360 (+13.8)	10.2%
50 000 - 99 999 載重噸 50 000 - 99 999 DWT	3 870 (+2.8)	28.9%
100 000 載重噸及以上 100 000 DWT and above	750 (+59.4)	5.6%
- 按主要貿易地區/國家分析 (根據所申報的上一個停靠港口) - Analysed by Principal Trading Region/Country (Based on Reported Previous Port)		
東南亞 South East Asia	4 470 (+16.5)	33.4%
中國內地 The Mainland of China	3 900 (+31.8)	29.1%
台灣 Taiwan	2 560 (+4.2)	19.1%
北美洲 North America	760 (-21.1)	5.7%
日本 Japan	680 (-16.6)	5.1%
西歐 Western Europe	340 (-16.2)	2.5%
中美洲、南美洲 Central and South America	200 (+26.6)	1.5%
大洋洲 Oceania	160 (-40.5)	1.2%
非洲 Africa	110 (+29.1)	0.8%
中東 Middle East	100 (-25.2)	0.7%
獨立國家聯合體及東歐 CIS and Eastern Europe	70 (+37.3)	0.5%
其他 Others	40 (+5.0)	0.3%
使用貨櫃碼頭處理貨櫃的遠洋輪船平均在港停留時間 (小時) Average Time in Port for Ocean Vessels with Containers Handled in Container Terminals (Hours)	13	

表 8
TABLE 8

2007 年按夏季吃水分析抵港遠洋輪船的船次
Ocean Vessel Arrivals by Summer Draft, 2007

夏季吃水 (米) Summer Draft (m)	抵港船次 No. of Vessel Arrivals	比重百分率 Percentage Share
	(%)	
少於 2.00 Under 2.00	1 180 (-46.1)	3.2%
2.00 - 3.99	5 370 (-16.4)	14.5%
4.00 - 5.99	4 900 (-3.5)	13.2%
6.00 - 7.99	4 010 (+12.2)	10.8%
8.00 - 9.99	7 300 (+1.1)	19.6%
10.00 - 11.99	5 810 (-7.8)	15.6%
12.00 - 13.99	3 320 (-2.1)	8.9%
14.00 - 15.99	4 580 (+12.0)	12.3%
16.00 - 17.99	450 (-12.0)	1.2%
18.00 及以上 18.00 and above	240 (-1.6)	0.7%
總計 Total	37 150 (-4.8)	100.0%

表 9
TABLE 9

2007 年按船舶長度分析抵港遠洋輪船的船次
Ocean Vessel Arrivals by Vessel Length, 2007

船舶長度 (米) Length Overall (m)	抵港船次 No. of Vessel Arrivals	比重百分率 Percentage Share
	(%)	
少於 30.0 Under 30.0	940 (-56.5)	2.5%
30.0 - 49.9	1 700 (-17.5)	4.6%
50.0 - 99.9	8 820 (-6.7)	23.7%
100.0 - 149.9	7 030 (-1.6)	18.9%
150.0 - 199.9	9 500 (-2.3)	25.6%
200.0 - 249.9	3 540 (+10.6)	9.5%
250.0 - 299.9	3 970 (+0.1)	10.7%
300.0 及以上 - 300.0 and above	1 660 (+26.3)	4.5%
總計 Total	37 150 (-4.8)	100.0%

表 10
TABLE 10

2007 年按主要來港原因分析抵港遠洋輪船的船次
Ocean Vessel Arrivals by Main Reason of Call, 2007

主要來港原因 Main Reason of Call	抵港船次 No. of Vessel Arrivals	比重百分率 Percentage Share
	(%)	
裝貨、卸貨 Loading and Discharging Cargo	22 750 (+60.8)	61.2%
人事轉動 (乘客、船員等) Change of Personnel (Passengers, Crew, etc.)	3 580 (+4.1)	9.6%
交換文件 Switch Documents	3 230 (+4.5)	8.7%
卸貨 Discharging Cargo	3 060 (-4.6)	8.2%
裝貨 Loading Cargo	2 560 (-81.1)	6.9%
補充燃料 Bunkers	380 (+8.3)	1.0%
船上用品補給 (燃料除外) Taking Stores (Except Bunkers)	380 (+1.1)	1.0%
緊急修理、非例行入乾塢 Emergency Repair, Non-routine Dry Docking	40 (-18.8)	0.1%
其他 Others	1 190 (-42.8)	3.2%
總計 Total	37 150 (-4.8)	100.0%

表 11
TABLE 11

2007 年跨境客運碼頭⁽¹⁾的抵港及離港航次統計資料
Statistics on Vessel Arrivals and Departures at Cross-Boundary Ferry Terminals⁽¹⁾, 2007

來往 From/To	運輸工具類別 Type of Carrier	提供服務的船舶/ 直升機數目 No. of Vessels/ Helicopters in Services	抵港 Arrivals				離港 Departures			
			航次 No. of Trips		淨註冊噸位 (千噸) NRT ('000)		航次 No. of Trips		淨註冊噸位 (千噸) NRT ('000)	
		(%)	(%)	(%)	(%)	(%)	(%)	(%)	(%)	
澳門 Macau	雙體船 Catamaran	30 (+20.0)	24 820 (+13.1)	5 012 (+12.3)	25 080 (+12.1)	5 058 (+11.4)				
	噴射飛翼船 Jetfoil	14 (-6.7)	19 030 (+3.5)	1 862 (+3.5)	19 030 (+3.5)	1 862 (+3.5)				
	直升機 Helicopter	5 (0)	8 710 (+4.6)	- (-)	8 710 (+4.6)	- (-)				
小計 - 澳門 Sub-total - Macau			52 560 (+8.0)	6 874 (+9.8)	52 820 (+7.6)	6 921 (+9.2)				
斗門 Doumen	雙體船 Catamaran	2 (0)	80 (+41.5)	13 (+116.7)	80 (+40.7)	13 (+116.3)				
高明 Gaoming	雙體船 Catamaran	3 (0)	390 (-35.7)	62 (-37.9)	390 (-35.5)	63 (-37.7)				
鶴山 Heshan	雙體船 Catamaran	0 (0)	0 (0)	0 (0)	0 (0)	0 (0)				
虎門 Humen	雙體船 Catamaran	8 (+14.3)	3 180 (+33.6)	507 (+37.4)	3 170 (+33.5)	506 (+37.3)				
江門 Jiangmen	雙體船 Catamaran	7 (+40.0)	1 120 (+0.2)	155 (-0.5)	1 120 (+0.2)	155 (-0.5)				
蓮花山 Lianhuashan	雙體船 Catamaran	5 (+25.0)	1 480 (+11.1)	249 (+8.8)	1 480 (+11.0)	248 (+8.7)				
南沙 Nansha	雙體船 Catamaran	5 (0)	2 020 (-9.0)	405 (-5.3)	2 010 (-9.3)	403 (-5.5)				
平州 Pingzhou	雙體船 Catamaran	0 (-100.0)	0 (-100.0)	0 (-100.0)	0 (-100.0)	0 (-100.0)				
三埠 Sanbu	雙體船 Catamaran	1 (0)	170 (-46.5)	30 (-46.5)	170 (-46.5)	30 (-46.5)				
蛇口 Shekou	雙體船 Catamaran	13 (+30.0)	9 710 (+3.6)	1 187 (+1.9)	9 710 (+3.7)	1 187 (+2.0)				
	大船 Conventional Ferry	0 (0)	0 (0)	0 (0)	0 (0)	0 (0)				

註釋： (1) 包括港澳碼頭、中港碼頭、屯門碼頭及海天客運碼頭的統計。

Note: (1) Including Macau Ferry Terminal, China Ferry Terminal, Tuen Mun Ferry Terminal and SkyPier.

表 11 - 續
TABLE 11 - Cont'd

來往 From/To	運輸工具類別 Type of Carrier	提供服務的船舶/ 直升機數目 No. of Vessels/ Helicopters in Services	抵港 Arrivals				離港 Departures			
			航次 No. of Trips		淨註冊噸位 (千噸) NRT ('000)		航次 No. of Trips		淨註冊噸位 (千噸) NRT ('000)	
		(%)	(%)	(%)	(%)	(%)	(%)	(%)	(%)	
深圳 Shenzhen	雙體船 Catamaran	14 (+16.7)	6 020 (+2.5)	1 006 (-1.4)	5 670 (-1.7)	943 (-5.6)				
順德 Shunde	雙體船 Catamaran	5 (0)	2 350 (+2.8)	395 (+2.5)	2 350 (+3.1)	394 (+2.8)				
肇慶 Zhaoqing	雙體船 Catamaran	0 (0)	0 (0)	0 (0)	0 (-100.0)	0 (-100.0)				
中山 Zhongshan	雙體船 Catamaran	6 (+20.0)	4 800 (+14.3)	817 (+14.1)	4 450 (+6.0)	756 (+5.8)				
珠海 Zhuhai	雙體船 Catamaran	10 (-28.6)	6 760 (+21.0)	1 143 (+23.6)	6 750 (+20.8)	1 142 (+23.4)				
小計 - 內河港口 Sub-total - River Trade Ports			38 060 (+7.3)	5 969 (+7.0)	37 340 (+5.6)	5 841 (+5.2)				
汕頭 Shantou	大船 Conventional Ferry	0 (0)	0 (0)	0 (0)	0 (0)	0 (0)				
廈門 Xiamen	大船 Conventional Ferry	1 (0)	10 (+9.1)	43 (+9.1)	10 (+9.1)	43 (+9.1)				
小計 - 中國沿岸港口 Sub-total - Mainland Coastal Ports			10 (+9.1)	43 (+9.1)	10 (+9.1)	43 (+9.1)				
公海 High Seas	大船 Conventional Ferry	1 (0)	600 (-1.3)	2 152 (-1.3)	600 (-1.3)	2 152 (-1.3)				
小計 - 公海 Sub-total - High Seas			600 (-1.3)	2 152 (-1.3)	600 (-1.3)	2 152 (-1.3)				
總計 Total			91 240 (+7.6)	15 037 (+7.0)	90 770 (+6.7)	14 957 (+6.0)				

表 12
TABLE 12

2007 年按船舶類型分析香港過境船舶的船次
Number of Vessel Trips Transit Hong Kong by Ship Type, 2007

船舶類型 Ship Type	過境船次 Vessel Trips Transit Hong Kong	變動百分率 Percentage Change	淨註冊噸位 (千噸) NRT ('000)	變動百分率 Percentage Change
化學品運載船 Chemical Carrier/Tanker	90	-21.8%	304	-6.2%
普通貨船 Conventional Cargo Vessel	580	+23.6%	2 178	+27.5%
散裝乾貨船 Dry Bulk Carrier	530	-4.5%	10 140	-5.6%
全槽格式貨櫃船 Fully Cellular Container Vessel	10 180	+16.9%	257 601	+25.1%
液化氣體運載船 Gas Carrier/Tanker	120	+50.0%	3 423	+187.0%
油輪 Oil Tanker	200	0.0%	1 320	+14.8%
滾裝卸式船 Roll On/Roll Off	10	+225.0%	100	+514.8%
半貨櫃船 Semi-container Vessel	20	-25.0%	93	-40.9%
拖船 Tug	860	-7.5%	429	-3.0%
其他 Others	470	+30.1%	394	+42.0%
總計 Total	13 040	+14.0%	275 980	+24.3%

資料來源： 海事處船隻航行監察中心
Data Source: Vessel Traffic Centre, Marine Department

表 13
TABLE 13

2007 年按跨境客運碼頭分析客運量
Passenger Throughput by Cross-Boundary Ferry Terminals, 2007

來往 From/To	澳門 Macau	中國內地 The Mainland of China	公海 High Seas	總計 Total
	(%)	(%)	(%)	(%)
港澳客運碼頭 ⁽¹⁾ Macau Ferry Terminal ⁽¹⁾	12 530 800 ⁽³⁾ (+14.5)	1 699 800 (+2.7)	- (-)	14 230 600 (+13.0)
中國客運碼頭 ⁽¹⁾ China Ferry Terminal ⁽¹⁾	4 308 800 (+22.6)	4 868 000 (+1.7)	318 400 (+6.8)	9 495 200 (+10.4)
屯門客運碼頭 ⁽²⁾ Tuen Mun Ferry Terminal ⁽²⁾	- (-)	151 300 (+321.2)	- (-)	151 300 (+321.2)
海天碼頭 SkyPier	461 500 (+40.9)	1 606 200 (+16.0)	- (-)	2 067 800 (+20.7)
總計 Total	17 301 200 (+17.0)	8 325 200 (+5.9)	318 400 (+6.8)	25 944 800 (+13.1)

註釋： (1) 這數字源自海事處，與入境事務處發布的統計數字並不相等，原因在於入境事務處的數字包括毋須付船費的乘客 [例如不足一歲者]。

(2) 屯門客運碼頭由二零零六年十一月三日開始運作。

(3) 乘搭直升機經港澳碼頭來往澳門乘客沒有計算在內。

Notes: (1) The figures are originated from the Marine Department and do not tally with those released by the Immigration Department because the figures of Immigration Department cover the passengers who are not required to pay fares (e.g. passengers less than 1 year of age).

(2) The Tuen Mun Ferry Terminal started operation with effect from 3 November 2006.

(3) The helicopter passengers to and from Macau via Macau Ferry Terminal are excluded.

資料來源： 香港國際機場客運碼頭服務有限公司及海事處客運碼頭組

Data Source: Hong Kong International Airport Ferry Terminal Services Ltd and Ferry Terminals Section, Marine Department.

表 14
TABLE 14

2007 年按航線分析抵港及離港乘客人次
Passenger Arrivals and Departures by Routes, 2007

I. 港澳碼頭、中港碼頭和屯門碼頭⁽¹⁾
Macau Ferry Terminal, China Ferry Terminal and Tuen Mun Ferry Terminal⁽¹⁾

來往 From/To	運輸工具類別 Type of Carrier	抵港乘客 Passenger Arrivals		離港乘客 Passenger Departures	
		乘客人次(千位數) Passengers ('000)	載客率 Passenger Load Factor	乘客人次(千位數) Passengers ('000)	載客率 Passenger Load Factor
		(%)	(%)	(%)	(%)
澳門 Macau	雙體船 Catamaran	4 284 (+32.3)	49.6% (+16.9)	5 615 (+19.1)	63.6% (+5.8)
	噴射飛翼船 Jetfoil	3 437 (+8.5)	74.9% (+4.9)	3 504 (+8.5)	76.4% (+4.9)
	直升機 Helicopter	60 (+19.1)	57.8% (+13.8)	69 (+21.7)	65.7% (+16.4)
小計 - 澳門 Sub-total - Macau		7 781 (+20.5)	58.4% (+10.0)	9 187 (+14.9)	67.9% (+5.1)
斗門 Doumen	雙體船 Catamaran	14 (+70.1)	49.5% (-7.4)	15 (+54.9)	52.8% (-15.4)
高明 Gaoming	雙體船 Catamaran	77 (-22.0)	59.0% (+21.3)	82 (-18.9)	62.2% (+25.8)
鶴山 Heshan	雙體船 Catamaran	0 (0)	0% (0)	0 (0)	0% (0)
虎門 Humen	雙體船 Catamaran	19 (+7.1)	18.8% (+16.0)	20 (+2.6)	19.4% (+11.4)
江門 Jiangmen	雙體船 Catamaran	144 (+1.2)	36.0% (-0.1)	147 (+1.5)	36.8% (+0.3)
蓮花山 Lianhuashan	雙體船 Catamaran	237 (+39.1)	45.4% (+25.4)	185 (+58.1)	35.5% (+42.7)
南沙 Nansha	雙體船 Catamaran	299 (-2.9)	38.8% (+6.6)	275 (-2.7)	35.9% (+7.1)
平州 Pingzhou	雙體船 Catamaran	0 (-100.0)	0% (-100.0)	0 (-100.0)	0% (-100.0)
三埠 Sanbu	雙體船 Catamaran	21 (-59.7)	34.0% (-24.6)	23 (-59.2)	37.1% (-23.7)

註釋： (1) 數字已包括於二零零六年十一月啓用之屯門客運碼頭的統計。

Note: (1) The figures have included the statistics for Tuen Mun Ferry Terminals which came into operation in November 2006.

表 14 - 續
TABLE 14 - Cont'd

來往 From/To	運輸工具類別 Type of Carrier	抵港乘客 Passenger Arrivals				離港乘客 Passenger Departures			
		乘客人次(千位數) Passengers ('000)		載客率 Passenger Load Factor		乘客人次(千位數) Passengers ('000)		載客率 Passenger Load Factor	
			(%)		(%)		(%)		(%)
蛇口 Shekou	雙體船 Catamaran	301	(-7.8)	22.0%	(-10.8)	306	(-8.4)	22.3%	(-11.5)
	大船 Conventional Ferry	0	(0)	0%	(0)	0	(0)	0%	(0)
深圳 Shenzhen	雙體船 Catamaran	179	(-20.2)	22.1%	(-19.0)	206	(-22.7)	23.0%	(-22.9)
順德 Shunde	雙體船 Catamaran	453	(+16.3)	56.2%	(+13.5)	436	(+13.4)	54.1%	(+10.4)
肇慶 Zhaoqing	雙體船 Catamaran	0	(0)	0%	(0)	0	(0)	0%	(0)
中山 Zhongshan	雙體船 Catamaran	611	(+7.3)	39.5%	(-7.8)	605	(+1.7)	39.1%	(-12.6)
珠海 Zhuhai	雙體船 Catamaran	1 070	(+14.4)	48.5%	(-0.5)	991	(+11.6)	45.0%	(-2.7)
小計 - 內河港口 Sub-total - River Trade Ports		3 425	(+4.9)	39.1%	(+0.5)	3 291	(+2.5)	37.2%	(-1.9)
汕頭 Shantou	大船 Conventional Ferry	0	(0)	0%	(0)	0	(0)	0%	(0)
廈門 Xiamen	大船 Conventional Ferry	1	(+63.6)	20.3%	(+134.8)	1	(+68.8)	21.5%	(+142.1)
小計 - 中國沿岸港口 Sub-total - Mainland Coastal Ports		1	(+63.6)	20.3%	(+134.8)	1	(+68.8)	21.5%	(+142.1)
公海 High Seas	大船 Conventional Ferry	159	(+6.8)	47.7%	(+73.8)	159	(+6.8)	47.7%	(+73.7)
小計 - 公海 Sub-total - High Seas		159	(+6.8)	47.7%	(+73.8)	159	(+6.8)	47.7%	(+73.7)
港澳碼頭、中港碼頭及屯門碼頭 Macau Ferry Terminal, China Ferry Terminal and Tuen Mun Ferry Terminal		11 367	(+15.1)	50.7%	(+8.4)	12 639	(+11.3)	55.7%	(+4.8)

表 14 - 續
TABLE 14 - Cont'd

II. 海天客運碼頭
SkyPier

來往 From/To	運輸工具類別 Type of Carrier	抵港乘客 Passenger Arrivals		離港乘客 Passenger Departures	
		乘客人次(千位數) Passengers ('000)	載客率 Passenger Load Factor	乘客人次(千位數) Passengers ('000)	載客率 Passenger Load Factor
		(%)	(%)	(%)	(%)
澳門 Macau	雙體船 Catamaran	333 (+23.2)	50.2% (+2.7)	129 (+123.9)	23.2% (+105.0)
小計 - 澳門 Sub-total - Macau		333 (+23.2)	50.2% (+2.7)	129 (+123.9)	23.2% (+105.0)
虎門 Humen	雙體船 Catamaran	233 (+25.5)	25.5% (-12.4)	192 (+30.3)	21.0% (-8.6)
蓮花山 Lianhuashan	雙體船 Catamaran	0 (0)	0% (0)	0 (0)	0% (0)
蛇口 Shekou	雙體船 Catamaran	384 (+9.2)	32.4% (+5.6)	174 (+6.9)	14.7% (+4.2)
深圳 Shenzhen	雙體船 Catamaran	286 (+8.6)	24.6% (-9.3)	243 (+2.5)	25.2% (-13.4)
中山 Zhongshan	雙體船 Catamaran	30 (+21.5)	17.5% (+9.1)	42 (+248.4)	19.4% (+139.4)
珠海 Zhuhai	雙體船 Catamaran	14 (+100.0)	12.0% (+100.0)	7 (+100.0)	6.1% (+100.0)
小計 - 內河港口 Sub-total - River Trade Ports		947 (+14.8)	26.7% (-5.0)	659 (+17.7)	19.4% (-2.0)
海天客運碼頭 SkyPier		1 280 (+16.8)	30.4% (-2.8)	787 (+27.6)	19.9% (+7.2)

表15
TABLE 15

2007年按主要貨物裝卸地點分析貨櫃吞吐量
Container Throughput by Main Cargo Handling Location, 2007

千個標準貨櫃單位
'000 TEUs

類別 Category	貨櫃碼頭 Container Terminals			貨櫃碼頭以外 Other than Container Terminals			總計 Total
	遠洋 Ocean	內河 River	小計 Sub-total	遠洋 Ocean	內河 River	小計 Sub-total	
裝上 Loaded	(%)	(%)	(%)	(%)	(%)	(%)	(%)
載貨貨櫃 Laden Container	7 527 (+11.5)	846 (-8.4)	8 373 (+9.1)	498 (-33.6)	1 511 (-2.5)	2 009 (-12.7)	10 382 (+4.1)
空貨櫃 Empty Container	286 (+38.9)	243 (-15.2)	529 (+7.5)	90 (-3.7)	957 (+4.9)	1 047 (+4.1)	1 575 (+5.2)
小計 Sub-total	7 813 (+12.3)	1 089 (-10.0)	8 902 (+9.0)	588 (-30.3)	2 468 (+0.2)	3 056 (-7.6)	11 958 (+4.2)
卸下 Discharged							
載貨貨櫃 Laden Container	5 658 (+9.5)	1 104 (+0.5)	6 762 (+7.9)	1 176 (-18.2)	1 587 (-4.6)	2 763 (-10.9)	9 525 (+1.7)
空貨櫃 Empty Container	1 612 (+3.4)	46 (-16.6)	1 658 (+2.7)	67 (+48.6)	791 (-23.8)	858 (-20.8)	2 516 (-6.7)
小計 Sub-total	7 269 (+8.1)	1 150 (-0.3)	8 420 (+6.9)	1 243 (-16.2)	2 378 (-12.0)	3 621 (-13.5)	12 041 (-0.2)
合計 Overall							
載貨貨櫃 Laden Container	13 185 (+10.6)	1 950 (-3.5)	15 135 (+8.6)	1 673 (-23.5)	3 099 (-3.6)	4 772 (-11.7)	19 907 (+2.9)
空貨櫃 Empty Container	1 898 (+7.5)	289 (-15.4)	2 187 (+3.8)	157 (+13.3)	1 747 (-10.4)	1 905 (-8.8)	4 091 (-2.5)
總計 Total	15 083 (+10.2)	2 239 (-5.3)	17 322 (+7.9)	1 830 (-21.3)	4 846 (-6.2)	6 677 (-10.9)	23 998 (+2.0)

表 16
TABLE 16

2007 年按貨櫃碼頭以外的主要貨物裝卸地點分析裝卸的貨櫃
Containers Discharged/Loaded at Main Cargo Handling Locations Other than Container Terminals, 2007

千個標準貨櫃單位
'000 TEUs

主要貨物裝卸地點 (貨櫃碼頭以外) Main Cargo Handling Location (Other than Container Terminals)	遠洋 Ocean				內河 River				總計 Total		
	卸下 Discharged		裝上 Loaded		卸下 Discharged		裝上 Loaded				
	載貨貨櫃 Laden	空貨櫃 Empty	載貨貨櫃 Laden	空貨櫃 Empty	載貨貨櫃 Laden	空貨櫃 Empty	載貨貨櫃 Laden	空貨櫃 Empty	載貨貨櫃 Laden	空貨櫃 Empty	
	(%)	(%)	(%)	(%)	(%)	(%)	(%)	(%)	(%)	(%)	(%)
泊位和倉庫碼頭 Berths and Wharves	186 (-1.5)	24 (+17.3)	111 (-9.0)	41 (+159.2)	1 011 (-13.1)	735 (-20.9)	1 241 (-0.1)	627 (-10.8)	2 549 (-6.2)	1 426 (-14.5)	
碇泊處 Anchorages	922 (-21.8)	43 (+78.2)	365 (-39.0)	49 (-36.8)	574 (+15.3)	56 (-19.6)	270 (-11.5)	330 (+60.5)	2 132 (-17.4)	478 (+26.8)	
浮泡 Buoys	67 (-3.3)	† (-57.4)	22 (-26.0)	0 (-100.0)	2 (-17.6)	0 (-100.0)	† (-97.8)	0 (-100.0)	91 (-12.2)	† (-99.3)	
總計 Total	1 176 (-18.2)	67 (+48.6)	498 (-33.6)	90 (-3.7)	1 587 (-4.6)	791 (-23.8)	1 511 (-2.5)	957 (+4.9)	4 772 (-11.7)	1 905 (-8.8)	

† 少於 500 個標準貨櫃單位

† Less than 500 TEUs

表 17
TABLE 17

2007 年按貨物種類及運輸方式劃分的裝卸港口貨物
Port Cargo Discharged/Loaded by Cargo Type and Mode of Transport, 2007

千公噸
'000 Tonnes

貨物種類 Cargo Type	海運 Seaborne		河運 River		水運總計 Waterborne total	
	卸下 Discharged	裝上 Loaded	卸下 Discharged	裝上 Loaded	卸下 Discharged	裝上 Loaded
	(%)	(%)	(%)	(%)	(%)	(%)
包裝散貨 Break bulk cargo	6 502 (-4.5)	1 416 (-10.5)	4 090 (-19.3)	7 668 (+0.3)	10 592 (-10.8)	9 084 (-1.5)
貨櫃貨物 Containerized cargo	75 495 (+4.3)	64 370 (+13.3)	22 719 (-2.7)	27 451 (-2.6)	98 214 (+2.6)	91 821 (+8.0)
無包裝液態散貨 Unpacked liquid bulk cargo	15 840 (+0.6)	745 (+115.3)	860 (+32.5)	516 (-27.7)	16 700 (+1.9)	1 261 (+19.0)
無包裝固態散貨 Unpacked solid bulk cargo	11 599 (-0.3)	1 382 (+55.3)	4 220 (-28.4)	561 (+5.6)	15 819 (-9.8)	1 943 (+36.7)
總計 Total	109 436 (+2.7)	67 913 (+13.9)	31 889 (-8.8)	36 196 (-2.4)	141 325 (-0.2)	104 109 (+7.7)

資料來源： 政府統計處船隻及貨運統計組
Data Source: Shipping and Cargo Statistics Section, Census and Statistics Department

表 18
TABLE 18

海港繫泊浮泡統計資料
Harbour Mooring Buoys Statistics

A. 浮泡數目 (年底數字) Number of Buoys (Figures as at End of the Year)	2006	2007
"A 級" 繫泊浮泡數目 No. of "A class" mooring buoys	21	21
"B 級" 繫泊浮泡數目 No. of "B class" mooring buoys	10	10

B. 使用情況 Usage	2006	2007
"A 級" 浮泡訂用日數 Days booked for "A class" buoys	2 162	2 143
"B 級" 浮泡訂用日數 Days booked for "B class" buoys	824	847
"A 級" 浮泡訂用百分率 Percentage of "A class" buoys used based on booking	39.8%	41.2%
"B 級" 浮泡訂用百分率 Percentage of "B class" buoys used based on booking	33.4%	31.5%
上述數字只顯示訂用情況，實際使用率則如下： Whilst the above figures are indicative of booking usage, the actual physical occupancy rates are as follows:		
"A 級" 浮泡 "A class" buoys	27.79%	27.93%
"B 級" 浮泡 "B class" buoys	21.61%	21.30%

C. 浮泡保養 Buoys Maintenance	2006	2007
按期保養的燈浮標 Light Buoys maintained	109	109
按期保養的養魚區浮泡 Mariculture Buoys maintained	178	178
按期保養的小型繫泊浮泡 Minor Mooring maintained	169	169
按期保養的大型繫泊浮泡 Major Mooring maintained	20	20
按期保養的"A 級" 海港繫泊浮泡 Maintained the "A Class" Harbour mooring	21	21
按期保養的"B 級" 海港繫泊浮泡 Maintained the "B Class" Harbour mooring	10	10

資料來源： (A) & (B) 海事處船隻航行監察中心 Data Sources: (A) & (B) Vessel Traffic Centre,
Marine Department
(C) 海事處港口後勤組 (C) Port Logistics Section, Marine Department

表 19
TABLE 19

2007 年按分佈地點分析香港私用繫泡數目
Number of Private Moorings Laid in Hong Kong by Location, 2007

	分佈地點	Location	私用繫泡數目 Number of Private Mooring	
中部 Central	銅鑼灣避風塘	Causeway Bay Typhoon Shelter	316	
	銅鑼灣避風塘 (防波堤外)	Causeway Bay Typhoon Shelter (Outside Breakwater)	0	
	堅尼地城新海旁	Kennedy Town New Praya	0	
	荔枝角	Lai Chi Kok	3	
	新油麻地避風塘 (防波堤外)	New Yaumatei Typhoon Shelter (Outside Breakwater)	33	
	新油麻地避風塘	New Yaumatei Typhoon Shelter	17	
	皇后碼頭西	Queen's Pier West	0	
	藍巴勒海峽 (避風塘外)	Rambler Channel (Outside Typhoon Shelter)	6	
	三家村避風塘	Sam Ka Tsuen Typhoon Shelter	1	
	昂船洲東南	Stonecutters Island South East	1	
	汀九	Ting Kau	61	
	土瓜灣	To Kwa Wan	4	
	青衣北	Tsing Yi North	4	
	荃灣	Tsuen Wan	93	
	灣仔龍景街對出海旁	Wan Chai (Off Lung King Street)	0	
油塘灣	Yau Tong Wan	2		
	小計	Sub-total	541	
東部 East	赤徑口	Chek Keng Hau	0	
	西貢白沙灣	Hebe Haven	738	
	高塘口灣	Ko Tong Hau Wan	1	
	滘西洲	Kau Sai Chau	1	
	大埔船灣海	Shuen Wan Hoi, Tai Po	0	
	大埔大尾篤	Tai Mei Tuk, Tai Po	38	
	西貢大網仔	Tai Mong Tsai, Sai Kung	7	
	西貢大網仔(阿公灣)	Tai Mong Tsai, Sai Kung (A Kung Wan)	2	
	西貢斬竹灣	Tsam Chuk Wan, Sai Kung	10	
	西貢早禾坑	Tso Wo Hang, Sai Kung	14	
	往灣洲 (黃竹角海)	Wong Wan Chau (Wong Chuk Kok Hoi)	2	
		小計	Sub-total	814

表 19 – 續
TABLE 19 – Cont'd

	分佈地點	Location	私用繫泡數目 Number of Private Mooring
南部 South	香港仔南避風塘 (白沙灣)	Aberdeen South Typhoon Shelter (Pak Sha Wan)	1
	香港仔南避風塘 (布廠灣)	Aberdeen South Typhoon Shelter (Po Chong Wan)	350
	香港仔西避風塘	Aberdeen West Typhoon Shelter	2
	香港仔西避風塘 (防波堤外)	Aberdeen West Typhoon Shelter (Outside Breakwater)	18
	南丫島鹿洲灣	Luk Chau Wan, Lamma Island	1
	南丫島蘆荻灣	Lo Tik Wan, Lamma Island	0
	南丫島模達灣	Mo Tat Wan, Lamma Island	0
	熨波洲	Middle Island	89
	南丫島波羅嘴	Po Lo Tsui, Lamma Island	10
	赤柱正灣	Stanley Main Beach	4
	大潭	Tai Tam	39
	南丫島榕樹灣	Yung Shue Wan, Lamma Island	2
		小計	Sub-total
西部 West	長洲避風塘	Cheung Chau Typhoon Shelter	11
	大嶼山(長沙欄)	Cheung Sha Lan, Lantau Island	29
	大嶼山愉景灣	Discovery Bay, Lantau Island	6
	大嶼山稔樹灣	Nim Shue Wan, Lantau Island	14
	北大嶼山	North Lantau	1
	坪洲西	Peng Chau West	0
	大嶼山竹篙灣	Penny's Bay, Lantau Island	0
	大欖	Tai Lam	3
	青衣西	Tsing Yi West	3
	屯門(渡輪碼頭以西)	Tuen Mun (West of Ferry Pier)	0
	屯門避風塘	Tuen Mun Typhoon Shelter	7
	屯門(避風塘外)	Tuen Mun (Outside Typhoon Shelter)	6
		小計	Sub-total
總計 Total			1 951

資料來源： 海事處私用繫泡分組
Data Source: Private Mooring Sub-unit, Marine Department

表 20
TABLE 20
碇泊處一覽
List of Anchorages

碇泊處 Anchorages	面積 (公頃) Area (Hectares)
A. 檢疫及入境船隻碇泊處 Quarantine and Immigration Anchorages	
1. 西面檢疫及入境船隻碇泊處 Western Quarantine and Immigration Anchorage	121.1
2. 東面檢疫及入境船隻碇泊處 Eastern Quarantine and Immigration Anchorage	35.1
3. 屯門入境船隻碇泊處 Tuen Mun Immigration Anchorages	89.9
小計 Sub-total	246.1
B. 危險品碇泊處 Dangerous Goods Anchorages	
1. 交椅洲危險品碇泊處 Kau Yi Chau Dangerous Goods Anchorage	288.2
2. 荃灣危險品碇泊處 Tsuen Wan Dangerous Goods Anchorage	61.9
3. 西面危險品碇泊處 Western Dangerous Goods Anchorage	220.8
4. 糧船灣海危險品碇泊處 Rocky Harbour Dangerous Goods Anchorage	26.9
5. 將軍澳危險品碇泊處 Junk Bay Dangerous Goods Anchorage	28.9
6. 大鵬灣危險品碇泊處 Mirs Bay Dangerous Goods Anchorage	316.5
7. 南丫島南危險品碇泊處 South Lamma Dangerous Goods Anchorage	228.5
8. 危險品留用碇泊處 Reserved Dangerous Goods Anchorage	37.3
小計 Sub-total	1 209.0
C. 維修碇泊處 Servicing Anchorages	
1. 馬灣碇泊處 Ma Wan Anchorage	138.4
2. 半山石碇泊處 Pun Shan Shek Anchorage	352.1
3. 西面 1 號碇泊處 Western Anchorage No.1	310.6
4. 西面 2 號碇泊處 Western Anchorage No.2	278.7
5. 西面 3 號碇泊處 Western Anchorage No.3	272.4
6. 南丫島北碇泊處 North Lamma Anchorage	375.1
7. 南丫島西北碇泊處 North West Lamma Anchorage	553.9
8. 油麻地碇泊處 Yau Ma Tei Anchorage	105.0
9. 奇力 1 號碇泊處 Kellett Anchorage No.1	74.7
10. 奇力 2 號碇泊處 Kellett Anchorage No.2	230.4
11. 奇力 3 號碇泊處 Kellett Anchorage No.3	102.8
12. 深水角 1 號碇泊處 Sham Shui Kok Anchorage No.1	72.6
13. 深水角 2 號碇泊處 Sham Shui Kok Anchorage No.2	35.6
小計 Sub-total	2 902.3

表 20 – 續
TABLE 20 – Cont'd

碇泊處 (續) Anchorage (Cont'd)	面積 (公頃) Area (Hectares)
D. 領航特別碇泊處 Pilotage Special Anchorages	
1. 龍鼓水道碇泊處 Urmston Road Anchorage	190.0
2. 南丫島東南碇泊處 South East Lamma Anchorage	285.5
3. 南丫島西南碇泊處 South West Lamma Anchorage	228.4
小計 Sub-total	703.9
E. 遮蔽碇泊處 Sheltered Anchorages	
1. 柴灣貨物裝卸區 Chai Wan Cargo Basin	11.2
2. 吉澳 Kat O	1.6
3. 沙頭角 Sha Tau Kok	0.6
4. 大澳船隻碇泊保護區 Tai O Sheltered Boat Anchorage	4.0
5. 荃灣小型浮泡區 Tsuen Wan Bay Minor Moorings	3.7
6. 熨波洲 Middle Island	6.9
7. 白沙灣 Pak Sha Wan (Hebe Haven)	84.0
8. 西貢海 Sai Kung Harbour	4.3
9. 大潭灣 Tai Tam Bay	5.7
10. 斬竹灣 Tsam Chuk Wan (Jude Bay)	7.5
11. 聖士提反灣 St. Stephen's Bay	1.3
12. 大尾篤 Tai Mei Tuk	12.3
13. 汀九 Ting Kau	0.7
小計 Sub-total	143.8
總計 Total	5 205.1

資料來源： 海事處策劃、發展協調及港口保安部

Data Source: Planning, Development & Port Security Branch, Marine Department

表 21
TABLE 21
避風塘一覽
List of Typhoon Shelters

	避風塘	Typhoon Shelters	面積 (公頃) Area (Hectares)
1.	南香港仔避風塘 ⁽¹⁾	Aberdeen South Typhoon Shelter ⁽¹⁾	26.1
2.	西香港仔避風塘	Aberdeen West Typhoon Shelter	34.2
3.	銅鑼灣避風塘 ⁽²⁾	Causeway Bay Typhoon Shelter ⁽²⁾	14.2
4.	長洲避風塘	Cheung Chau Typhoon Shelter	50.0
5.	觀塘避風塘	Kwun Tong Typhoon Shelter	33.8
6.	藍巴勒海峽避風塘	Rambler Channel Typhoon Shelter	12.9
7.	三家村避風塘	Sam Ka Tsuen Typhoon Shelter	1.9
8.	筲箕灣避風塘	Shau Kei Wan Typhoon Shelter	17.2
9.	船灣避風塘	Shuen Wan Typhoon Shelter	10.3
10.	土瓜灣避風塘	To Kwa Wan Typhoon Shelter	14.8
11.	屯門避風塘	Tuen Mun Typhoon Shelter	56.8
12.	新油麻地避風塘	New Yau Ma Tei Typhoon Shelter	64.6
13.	鹽田仔避風塘	Yim Tim Tsai Typhoon Shelter	9.2
14.	喜靈洲避風塘	Hei Ling Chau Typhoon Shelter	76.6
	總計	Total	422.6

備註： 只包括於二零零七年一月二日在政府憲報中(編號: L.N. 285/2006)所公佈的避風塘。
Remark: Including only those typhoon shelters promulgated in the Government Gazette (L.N. 285 of 2006) on 2.1.2007.

註釋： (1) 主要由遊樂船隻使用。
(2) 包括 9.9 公頃面積給遊樂船隻使用。

Notes: (1) Mainly for use by pleasure vessels.
(2) Including 9.9 hectares of area used by pleasure vessels.

資料來源： 海事處策劃、發展協調及港口保安部
Data Source: Planning, Development & Port Security Branch, Marine Department

表 22
TABLE 22

公眾貨物裝卸區一覽
List of Public Cargo Working Areas

	公眾貨物裝卸區 Public Cargo Working Area	面積 (公頃) Area (Hectares)	符合發牌條件之停泊位長度 (米) Licensable Seafrontage (in Metres)
1.	茶果嶺公眾貨物裝卸區 Cha Kwo Ling Public Cargo Working Area	3.94	920
2.	柴灣公眾貨物裝卸區 Chai Wan Public Cargo Working Area	2.12	600
3.	觀塘公眾貨物裝卸區 Kwun Tong Public Cargo Working Area	2.91	892
4.	新油麻地公眾貨物裝卸區 New Yau Ma Tei Public Cargo Working Area	6.78	1 212
5.	藍巴勒海峽公眾貨物裝卸區 Rambler Channel Public Cargo Working Area	4.11	1 036
6.	昂船洲公眾貨物裝卸區 Stonecutters Island Public Cargo Working Area	3.56	672
7.	屯門公眾貨物裝卸區 Tuen Mun Public Cargo Working Area	3.30	660
8.	西區公眾貨物裝卸區 Western District Public Cargo Working Area	4.02	1 052
	總計 Total	30.74	7 044

資料來源： 海事處貨物裝卸組
Data Source: Cargo Handling Section, Marine Department

表 23
TABLE 23

垃圾收集、油污和檢控個案統計資料
Refuse Collection, Oil Pollution and Prosecution Statistics

A. 垃圾收集和油污事故
Refuse Collection and Oil Pollution Incident

		2005	2006	2007
1.	從海港收集的垃圾(公噸) Refuse collected from harbour (tonnes)	11 727	12 167	12 209
2.	從船舶收集的垃圾(公噸) Refuse collected from vessel (tonnes)	3 258	4 043	4 341
3.	接報的疑似油污事故(宗) Alleged Oil Pollution incidents, reported (cases)	101	132	149

B. 檢控統計數字
Prosecution Statistics

罪行 Offence	陳詞/聆訊個案 No. of Cases Heard		定罪個案 No. of Cases Convicted		罰款 Fine (HK\$)	
	2006	2007	2006	2007	2006	2007
1. 違反碰撞規例 Breach of Collision Regulations	123	76	117	73	162 400	103 350
2. 船上沒有合格船長/輪機員 No qualified master/engineer on board	703	441	657	437	486 550	275 820
3. 違反牌照條件 breach of license condition	135	99	129	99	115 980	75 160
4. 未經允許進入機場入口區域 Entered into airport approach area without permission	11	3	11	3	10 250	2 900
5. 靠泊於已展示禁止船隻靠泊告示的岸壁/登岸梯級 Lying alongside seawall/landing steps prohibited by Notice	47	28	45	28	34 420	19 580
6. 船隻未有領牌/並無有效牌照 Vessel was not licensed/did not have a valid license	188	136	173	136	314 140	182 850
7. 未獲允許運載乘客/超額運載乘客 Carrying passenger without permission/excessive passengers	55	54	54	54	41 990	39 490
8. 沒有陳示有效的驗船/保險證明書 Failing to display valid certificate of survey/insurance	3	7	3	7	1 800	4 000
9. 超速行駛 Steaming in excessive speed	52	72	50	72	52 740	50 300
10. 海上拋置廢物 Marine littering	2	0	1	0	500	0
11. 海上拋置廢物(定額罰款) ⁽¹⁾ Marine littering (Fixed Penalty Notice) ⁽¹⁾	60	72	43	61	65 780	93 000
12. 在公共渡輪上吸煙 ⁽²⁾ Smoking on board public ferry ⁽²⁾	1	0	1	0	1 000	0
13. 排放黑煙 Emission of black smoke	7	0	7	0	17 000	0
14. 其他海事罪行 Other marine offences	420	717	409	716	966 650	904 740
總計 Total	1 807	1 705	1 700	1 686	2 271 200	1 751 190

註釋： (1) 一個申請法庭命令個案，附加罰款\$1,500。

Notes: (1) One Court Orders applied and an additional penalty of HK\$1,500 imposed.

(2) 個案由各公共渡輪公司提出再轉交海事處跟進檢控工作。

(2) Cases initiated by public ferry companies and referred to Marine Department for follow up prosecution actions.

資料來源： (A) 海事處港口後勤組
(B) 海事處檢控小組

Data Sources: (A) Port Logistics Section, Marine Department
(B) Prosecution Unit, Marine Department

表 24
TABLE 24

2007 年底按噸位等級分析香港持牌船舶
Hong Kong Licensed Vessels by Tonnage Classification, as at year end 2007

船舶類型 Vessel Type		60 淨噸及以下 60 Net Tons and Below	61 至 300 淨噸 61 - 300 Net Tons	300 淨噸以上 Over 300 Net Tons	總計 ⁽¹⁾ Total ⁽¹⁾
第 I 類 Class I	(a) 渡輪船舶 Ferry Vessel	11	40	9	60
	(b) 水上食肆 Floating Restaurant	0	0	2	2
	(c) 小輪 Launch	193	49	0	242
	(d) 多用途船舶 Multi-Purposes Vessel	9	4	2	15
	(e) 原始船舶 Primitive Vessel	75	2	0	77
	(f) 固定船舶 Stationary Vessel	0	0	0	0
	小計 Sub-total	288	95	13	396
第 II 類 Class II	(a) 起重機躉船 Cane Barge	0	0	2	2
	(b) 危險品運輸船 Dangerous Goods Carrier	1	5	25	31
	(c) 挖泥船 Dredger	0	0	2	2
	(d) 乾貨貨船 Dry Cargo Vessel	66	122	11	199
	(e) 非自航駁船 Dumb Lighter	4	24	502	530
	(f) 食油運輸船 Edible Oil Carrier	0	0	20	20
	(g) 平面工作躉 Flat-Top Work Barge	14	13	22	49
	(h) 浮塢 Floating Dock	0	0	3	3
	(i) 水上工場 Floating Workshop	0	0	1	1
	(j) 開底躉船 Hopper Barge	0	0	20	20
	(k) 登岸平台 Landing Platform	36	0	0	36
	(l) 登岸浮躉 Landing Pontoon	3	20	8	31
	(m) 有毒液體物質運輸船 Noxious Liquid Substance Carrier	0	0	4	4
	(n) 石油運輸船 Oil Carrier	22	101	40	163
	(o) 領港船 Pilot Boat	12	0	0	12

表 24 – 續
TABLE 24 – Cont'd

船舶類型 Vessel Type		60 淨噸及以下 60 Net Tons and Below	61 至 300 淨噸 61 - 300 Net Tons	300 淨噸以上 Over 300 Net Tons	總計 ⁽¹⁾ Total ⁽¹⁾
第 II 類 Class II	(p) 特別用途船舶 Special Purpose Vessel	0	1	0	1
	(q) 固定船舶 Stationary Vessel	114	29	6	149
	(r) 交通船 Transportation Boat	35	0	0	35
	(s) 交通舢舨 Transportation Sampan	93	0	0	93
	(t) 拖船 Tug	78	104	0	182
	(u) 供水船 Water Boat	15	9	0	24
	(v) 工作船 Work Boat	321	11	1	333
	小計 Sub-total	814	439	667	1 920
第 III 類 Class III	(a) 運魚船 Fish Carrier	1	1	0	2
	(b) 漁船舢舨 Fishing Sampan	911	0	0	911
	(c) 漁船 Fishing Vessel	622	1 299	1	1 922
	(d) 舷外機開敞式舢舨 Outboard Open Sampan	2 654	0	0	2 654
	小計 Sub-total	4 188	1 300	1	5 489
第 IV 類 Class IV	(a) 機械輔助帆船 Auxiliary Powered Yacht	N.A.	N.A.	N.A.	481
	(b) 遊樂船 Cruiser	N.A.	N.A.	N.A.	1 757
	(c) 開敞式遊樂船 Open Cruiser	N.A.	N.A.	N.A.	3 476
	小計 Sub-total	N.A.	N.A.	N.A.	5 714
	住家船舶 ⁽²⁾ Dwelling Vessel ⁽²⁾	-	-	-	5
總計 Total		5 290	1 834	681	13 524

註釋： (1) 已包括 22 艘閑置船舶。

Notes: (1) Including 22 laid-up vessels.

(2) 全部在銅鑼灣避風塘。

(2) All in Causeway Bay Typhoon Shelter.

資料來源： 海事處牌照及關務組

Data Source: Licensing and Port Formalities Section, Marine Department

表 25
TABLE 25

船舶安全監督統計資料
Ship Safety Statistics

A. 貨船安全統計數字 Cargo Ships Safety Statistics	2006	2007
海事處註冊貨船數目 No. of Cargo Ships in the Hong Kong Register <ol style="list-style-type: none"> 1. 所管理公約貨船數目 (截至年底) No. of convention cargo ships (as at year end) 2. 所管理公約貨船總噸位 (千公噸) (截至年底) Gross register tonnage of convention cargo ships ('000 tonnes) (as at year end) 3. 新申請在香港註冊公約貨船數目 No. of convention cargo ships newly registered 4. 新申請在香港註冊公約貨船總噸位 (千公噸) Gross register tonnage of convention cargo ships newly registered ('000 tonnes) 		
海事處註冊貨船品質審查/檢驗數目 No. of Hong Kong Registered Cargo Ships Quality Checked/Inspected <ol style="list-style-type: none"> 1. 品質審查的註冊貨船數目 Quality checks on Hong Kong registered cargo ships 2. 品質檢驗和稽核貨船數目 No. of flag state quality control ship inspections and company visits 3. 審核船體、機械和設備圖則數目 No. of plans examined in respect of hull, machinery and equipment 		
貨船設備安全證明書 Cargo Ship Safety Equipment Certificate <ol style="list-style-type: none"> 1. 所簽發的豁免證明書數目 No. of exemption certificates issued 2. 應其他國家機關要求而檢驗的外來船舶，以簽發設備安全證明書 Foreign ships surveyed at the request of other national authorities for the issue of SEC 		
貨船無線電安全證明書 Cargo Ship Safety Radio Certificate <ol style="list-style-type: none"> 1. 所簽發的豁免證明書數目 No. of exemption certificates issued 2. 應其他國家機關要求而檢驗的外來船舶，以簽發無線電安全證明書 Foreign ships surveyed at the request of other national authorities for the issue of SRC 		
其他 Others <ol style="list-style-type: none"> 1. 所簽發的《海員培訓、發證和值班標準國際公約》最低安全配員證明書 STCW Minimum Safe Manning Certificate issued 2. 對構造安全、設備安全、無線電安全證明書的監察，包括中期檢驗 Safety Construction, Equipment and Radio Certificates monitored including Intermediate Surveys 3. 對國際載重線證明書的監察，包括定期檢驗 International Load Line Certificate monitored including periodic surveys 4. 對國際防止油污證明書的監察 - 續期、年度/中期檢驗 International Oil Pollution Prevention Certificate monitored - renewal, annual/intermediate surveys 5. 對新船公司所作的國際安全管理稽核 ISM audits of new shipping companies 6. 其他檢驗 (例如合格證明書等) Other surveys (e.g. Certificates of Fitness etc) 		

表 25 – 續
TABLE 25 – Cont'd

B. 客船安全統計數字 Passenger Ships Safety Statistics	2006	2007
所管理公約客船 Convention Passenger Ships Administered		
1. 數目 Number	39	44
2. 總噸位 Gross register tonnage	18 302	20 580
客船安全證明書 Passenger and Safety Certificates		
1. 客船安全證明書 - 國際航線 PSSC - International Voyage	0	0
2. 客船安全證明書/高速船安全證明書 - 內河航限 PSSC/HSCSC - River Trade Limits	HSCSC - 62	HSCSC - 62
3. 延長客船安全證明書有效期 Extensions to Passenger and Safety Certificate	1	0
4. 客船安全證明書檢驗船舶總數 Total number of vessels surveyed for P&S Certificate	62	62
5. 受檢驗的客船無線電裝置 Passenger ship radio installations surveyed	62	62
6. 所簽發的載重線證書數目 No. of Load Line Certificate issued	6	13
7. 所簽發的載重線豁免證書數目 No. of Load Line Exemption Certificate issued	6	14
8. 所簽發的國際防止油污證書及增補數目 No. of IOPP Certificate with Supplement issued	11	19
9. 所簽發的國際防止油污豁免證書數目 No. of IOPP Exemption Certificate issued	0	5
10. 所簽發的最低安全配員證書數目 No. of Minimum Safe Manning Certificate issued	0	5
11. 對船公司所作的安全管理稽核 ISM audits of shipping companies	2	3
12. 對船舶所作的安全管理稽核 ISM audits of ships	11	16
13. 所簽發的 ISM 符合證明數目 No. of ISM Document of Compliance (DOC) issued	0	1
14. 所簽發的 ISM 安全管理證明書數目 No. of ISM Safety Management Certificate (SMC) issued	11	1
15. 所簽發的臨時 ISM 安全管理證明書數目 No. of Interim ISM Safety Management Certificate (SMC) issued	0	5

表 25 – 續
TABLE 25 – Cont'd

B. 客船安全統計數字 (續) Passenger Ships Safety Statistics (Cont'd)	2006	2007
雜項檢查，圖則審核和設備 Miscellaneous Inspection, Plans Approval and Equipment		
1. 審核客船船體、機械和設備圖則 Plans examined for hull, machinery and equipment of passenger ships	260	952
2. 簽發檢查證明書、雜項檢驗／檢查 Certificate of Inspection issued, miscellaneous surveys/inspections	116	125

C. 港口國監督統計數字 Port State Control Statistics	2006	2007
在香港特別行政區港口內進行的港口國監督檢查： Port State Control Inspections in the Harbour of Hong Kong Special Administrative Region:		
1. 在履行身為港口國監督委員而對《東京諒解備忘錄》應有的責任下，受港口國監督檢查的個別外來船舶數目 Number of individual foreign ships inspected under the obligation to Tokyo MOU, as a member Port State of the Committee	674	728
2. 對外來船舶進行港口國監督檢查 (包括複檢) 總數 Total number of Port State Control inspections carried out for foreign ships, including re-inspections	742	751
3. 因低於公約之規定標準而滯留於香港的船舶數目 Number of sub-standard ships detained in Hong Kong	62	19

註釋： (1) 證明書簽發數目激增，是因為須更換原來的證明書以符合新的格式要求。

Note: (1) The drastic increase in certificate issuance was due to the replacement of original certificates for compliance with new format requirements.

資料來源： (A) 海事處船舶註冊及
商船海員管理處
海事處貨船安全組
(B) 海事處客船安全組
(C) 海事處港口國監督組

Data Sources: (A) Shipping Registry and
Mercantile Marine Office, Marine Department
Cargo Ships Safety Section, Marine Department
(B) Passenger Ships Safety Section, Marine Department
(C) Port State Control Section, Marine Department

表 26
TABLE 26

本地船舶安全統計資料
Local Vessels Safety Statistics

I. 船舶的檢驗和檢查統計 Statistics on Surveys and Inspections of Vessels	2006	2007
A. 簽發/批註證明書/適合聲明/紀錄等給本地船隻 Certificates/Declaration/Records etc. Issued/Endorsed to Local Vessels <ol style="list-style-type: none"> 1. 簽發/批註乾舷勘定證明書數目 No. of Freeboard Assignment Certificates Issued/Endorsed 2. 簽發安全設備檢驗紀錄數目 No. of Survey Record of Safety Equipment Issued 3. 簽發/批註載重線證明書數目 No. of Load Line Certificate Issued/Endorsed 4. 簽發噸位丈量記錄數目 No. of Record of Tonnage Measurement Issued 5. 簽發散裝有毒液體物質的防污證明書數目 No. of Pollution Prevention Certificates for the Carriage of Noxious Liquid Substances in Bulk Issued 6. 簽發適合運載危險品聲明數目 No. of Declaration of Fitness for the Carriage of Dangerous Goods Issued 7. 簽發香港防止油類污染證明書數目 No. of Hong Kong Oil Pollution Prevention Certificates Issued 8. 簽發驗船證明書數給本地船隻數目 No. of Certificate of Survey Issued for Local Vessels <ul style="list-style-type: none"> 第 I 類 Class I 第 II 類 Class II 第 III 類 Class III 第 IV 類 Class IV 		
總計 Total	4 282	4 417
B. 審批圖則/文件 Plans/Documents Examined <ol style="list-style-type: none"> 1. 船隻傾斜測試及穩性確定數目 No. of Vessels Inclining Tested and Stability Information Assessed 2. 審核本地船隻的船體，機械和設備圖則數目 No. of Plans of Hull, Machinery and Equipment Examined for Local Vessels 		
總計 Total	3 949	4 042

表 26 – 續
TABLE 26 – Cont'd

I. 船舶的檢驗和檢查統計 (續) Statistics on Surveys and Inspections of Vessels (Cont'd)	2006	2007
C. 檢驗本地船隻隻數 (包括新船、現有船隻及抽查船隻等) Local Vessels Inspected (New, Existing and Spot-check Vessels etc.)		
1. 執行其他政府部門要求檢查的船隻數目 No. of Inspections of Vessels for other Government Departments	191	178
2. 完成首次檢驗而新領牌的船隻數目 No. of Newly Licensed Vessels after completed Initial Survey	18	38
3. 在本港檢驗本地船隻的數目 No. of Local Vessels Inspected Locally	3 539	3 500
總計 Total	3 748	3 716
D. 檢驗本地船隻次數 (包括新船、現有船隻及抽查船隻等) Inspection Visits Made to Local Vessels (New, Existing and Spot-check Vessels etc.)		
1. 檢驗碰撞後破損的本地船隻數目 No. of Inspection surveys of Damaged Local Vessels after Collision	20	13
2. 抽查及複驗本地船隻數目 Number of Spot Checks and Audit Checks on Local Vessels	37	162
3. 海外檢驗本地船隻次數 No. of Overseas visits for Inspection of Local Vessels	125	115
4. 本地船隻在本港首次及定期檢查次數 No. of Initial and Periodical Inspection Visits Made Locally to Local Vessels	4 920	4 483
總計 Total	5 102	4 773
E. 舉辦安全講座及研討會 Talks and Seminars Conducted	11	37

資料來源： 海事處本地船舶安全組

Data Source: Local Vessels Safety Section, Marine Department

表 26 – 續
TABLE 26 – Cont'd

II. 檢查正在修理、拆卸或從事裝卸貨物的船舶、調查海上工業意外事故 Inspections of Vessels Undergoing Repair or Demolition or Engaged in Cargo Handling, Investigations of Marine Industrial Accidents	2006	2007
A. 海上貨櫃檢查 Marine Containers Inspected	8 448	7 088
B. 海事工業安全檢查 (不包括海上貨櫃的檢查數目) Marine Industrial Safety Inspections (excluding number of marine containers inspected)		
1. 檢查正在修理的船舶 Inspections of Vessels Undergoing Repair	2 195	2 022
2. 檢查海事工程船舶 Inspections of Vessels Engaged in Marine Construction	116	106
3. 檢查遠洋船裝卸貨物工具 Cargo Gear Inspections on Ocean-going Vessels	309	280
4. 檢查遠洋船裝卸貨物 Stevedoring Inspections on Ocean-going Vessels	3 295	3 899
5. 檢查駁船裝卸貨物工具 Cargo Gear Inspections on Lighters	4 631	4 312
6. 檢查駁船裝卸貨物 Stevedoring Inspections on Lighters	1 691	1 247
總計 Total	12 237	11 866
C. 海事工業意外的調查及查詢數目 Marine Industrial Accidents Investigated/Inquired		
1. 調查致命的非海事工業意外 Non-marine Industrial Fatal Accidents Investigated	0	0
2. 調查致命的海事工業意外 Marine Industrial Fatal Accidents Investigated	2	4
3. 調查嚴重意外 Serious Accidents Investigated	4	15
4. 調查嚴重意外 (無傷亡) Serious Incidents (No Casualty) Investigated	4	1
5. 查詢非嚴重意外 Non-serious Accidents Inquired	387	256
總計 Total	397	276

表 26 – 續
TABLE 26 – Cont'd

II. 檢查正在修理、拆卸或從事裝卸貨物的船舶、調查海上工業意外事故 (續) Inspections of Vessels Undergoing Repair or Demolition or Engaged in Cargo Handling, Investigations of Marine Industrial Accidents (Cont'd)	2006	2007
D. 發生海事工業意外的數目 Marine Industrial Accidents Occurred <ol style="list-style-type: none"> 1. 修船意外總數 Total Ship Repair Accidents 2. 裝卸貨物意外總數 Total Cargo Handling Accidents 3. 海事工程意外總數 Total Marine Construction Accidents 		
總計 Total	410	306
E. 簽發修船許可證/轉介檢控小組的個案/發出警告信 Letters of Permission to Undertake Repairs Issued/Cases Referred to Prosecutions Unit/ Warning Letters Issued <ol style="list-style-type: none"> 1. 簽發修船許可證 Letters of Permission to Undertake Repairs Issued 2. 轉介檢控小組的個案 Cases Referred to Prosecutions Unit 3. 發出警告信數 Warning Letters Issued 		
總計 Total	5 617	5 644
F. 海事工業安全的宣傳及教育 Promotion and Education on Marine Industrial Safety <ol style="list-style-type: none"> 1. 發出安全指令 Safety Directions Issued 2. 出版或修訂的安全小冊子/單張/海報/貼紙數目 Number of Safety Pamphlets/Leaflets/Posters/Stickers Published or Revised 3. 出版或修訂的安全指南數目 Number of Safety Guides/Codes of Practice Published or Revised 4. 安全講座及研討會的舉辦數目 Number of Safety Talks and Seminars Conducted 		
總計 Total	165	49

資料來源： 海事處海事工業安全組
Data Source: Marine Industrial Safety Section, Marine Department

表 26 – 續
TABLE 26 – Cont'd

III. 香港註冊船舶的損失數目 ⁽¹⁾ Loss of Vessels Registered in Hong Kong ⁽¹⁾						
船舶類型 Class of Vessel	該類船隻數目 Number of Vessel		損失船隻數目 Number Lost		損失船隻百分率 Percentage Lost	
	2006	2007	2006	2007	2006	2007
公約船舶 (香港註冊) Convention (HK Registered)	939	1 012	1	1	0.1 %	0.09 %

註釋： (1) 指因遇險而導致損失的船舶。
Note: (1) Refers to loss of vessels due to casualty or accident.

資料來源： 海事處船舶註冊及商船海員管理處
Data Source: Shipping Registry and Mercantile Marine Office, Marine Department

IV. 2007 年海上意外事故統計 Marine Accidents in 2007									
意外事故類別 Type of Accident		香港水域範圍以內 Within Hong Kong Waters				香港水域範圍以外 Outside Hong Kong Waters			
		宗數 No. of Case	死亡人數 Persons Killed	受傷人數 Persons Injured	失蹤人數 Persons Missing	宗數 No. of Case	死亡人數 Persons Killed	受傷人數 Persons Injured	失蹤人數 Persons Missing
碰撞	Collision	148	1	12	0	14	9	0	8
擱淺/ 觸礁	Stranding/ Grounding	27	0	0	0	16	0	0	0
沉沒/ 入水	Foundering/ Sinking	25	3	3	0	2	0	0	0
火警/ 爆炸	Fire/ Explosion	14	0	5	0	4	2	2	0
翻沉/ 傾斜	Capsized/ Listing	7	1	3	0	0	0	0	0
接觸	Contact	33	0	8	0	14	0	3	0
其他	Others	24	0	2	0	5	0	0	0
總計	Total	278	5	33	0	55	11	5	8

資料來源： 海事處海事意外調查組
Data Source: Marine Accident Investigation Section, Marine Department

表 26 – 續
TABLE 26 – Cont'd

V. 海上意外事故調查 Marine Accident Investigation		2006	2007
調查意外事故 《船舶及港口管制條例》	Accidents Investigated (Shipping and Port Control Ordinance)	24	29
初步研訊 《商船條例》	Preliminary Inquiries (Merchant Shipping Ordinance)	3	2
領港研訊 《領港條例》	Pilotage Inquiries (Pilotage Ordinance)	0	0
海事法庭	Marine Courts	0	0
調查委員會	Board of Inquiry	0	0
對調查委員會裁決提出上訴	Appeal against the Decision by Board of Inquiry	0	0

資料來源： 海事處海事意外調查組

Data Source: Marine Accident Investigation Section, Marine Department

表 27
TABLE 27

海員發證、註冊和僱用統計資料
Seafarers' Certification, Registration and Employment Statistics

A. 遠洋合格證書 Seagoing Certificates of Competency	2006		2007	
	申請人數 Number of Application	及格人數 Number of Success	申請人數 Number of Application	及格人數 Number of Success
1. 商船船長及高級船員 Master Mariner and Deck Officer				
一級甲板高級船員 Class 1 (Master Mariner) (商船船長)				
筆試 Written Examination	2	0	1	1
口試 Oral Examination	3	2	6	5
其他 Other Services	33	33	25	25
二級甲板高級船員 Deck Officer Class 2				
筆試 Written Examination	0	0	0	0
口試 Oral Examination	0	0	1	1
訊號 Signal	0	0	0	0
其他 Other Services	11	11	7	7
三級甲板高級船員 Deck Officer Class 3				
筆試 Written Examination	11	3	17	10
口試 Oral Examination	5	3	18	15
訊號 Signal	7	6	15	5
其他 Other Services	22	22	1	1
小計 Sub-total	94	80	91	70
2. 輪機師 Marine Engineer Officer				
一級輪機師 Marine Engineer Officer – Class 1				
甲部 Part A	3	1	1	0
乙部 Part B	3	1	2	0
其他 Other Services	21	21	19	19
二級輪機師 Marine Engineer Officer - Class 2				
甲部 Part A	5	1	10	1
乙部 Part B	2	0	5	0
其他 Other Services	24	24	4	4
三級輪機師 Marine Engineer Officer - Class 3				
筆試 Written Examination	13	7	15	9
其他 Other Services	67	67	34	34
小計 Sub-total	138	122	90	67
總計 Total	232	202	181	137

表 27 – 續
TABLE 27 – Cont'd

B. 內河航行合格證書 River Trade Certificates of Competency	2006		2007	
	申請人數 Number of Application	及格人數 Number of Success	申請人數 Number of Application	及格人數 Number of Success
1. 甲板高級船員 Deck Officer				
一級甲板高級船員 Deck Officer Class 1				
筆試 Written Examination	0	0	0	0
口試 Oral Examination	1	1	13	8
訊號 Signal	0	0	0	0
其他 Other Services	47	47	23	23
二級甲板高級船員 Deck Officer Class 2				
筆試 Written Examination	4	3	2	0
口試 Oral Examination	6	6	1	1
訊號 Signal	0	0	0	0
其他 Other Services	15	15	11	11
三級甲板高級船員 Deck Officer Class 3				
筆試 Written Examination	18	8	28	11
口試 Oral Examination	8	7	22	8
訊號 Signal	20	9	41	18
其他 Other Services	6	6	9	9
小計 Sub-total	125	102	150	89
2. 輪機師 Marine Engineer Officer				
一級輪機師 Marine Engineer Officer - Class 1				
其他 Other Services	6	6	10	10
二級輪機師 Marine Engineer Officer - Class 2				
其他 Other Services	17	17	17	17
三級輪機師 Marine Engineer Officer - Class 3				
其他 Other Services	10	10	5	5
小計 Sub-total	58	41	64	41
總計 Total	183	143	214	130

表 27 – 續
TABLE 27 – Cont'd

C. 本地合格證書 ⁽¹⁾ Local Certificates of Competency ⁽¹⁾	2006		2007		
	申請人數 Number of Application	及格人數 Number of Success	申請人數 Number of Application	及格人數 Number of Success	
1. 船長 Master					
船長 - 300 噸或 以下船隻	Master - Vessels up to 300 tons	275	76	23	12
其他	Other Services	18	16	0	0
船長 - 60 噸或 以下船隻	Master - Vessels up to 60 tons	217	76	48	21
其他	Other Services	5	5	0	0
船長 - 漁船	Master - Fishing Vessel	8	1	1	0
其他	Other Services	295	295	0	0
船長 - 限制	Master - Restricted	14	2	0	0
其他	Other Services	2	2	0	0
小計 Sub-total		834	473	72	33
2. 輪機員 Engineer					
輪機員 - 渡輪船隻	Engineer - Ferry Vessels	0	0	0	0
其他	Other Services	0	0	0	0
輪機員 - 150 匹馬力 以上船隻	Engineer - Vessels over 150 BHP	290	143	37	20
其他	Other Services	8	8	0	0
輪機員 - 150 匹馬力或 以下船隻	Engineer - Vessels up to 150 BHP	11	4	1	1
其他	Other Services	0	0	0	0
輪機員 - 漁船	Engineer - Fishing Vessels	1	1	0	0
其他	Other Services	134	134	0	0
小計 Sub-total		444	290	38	21
總計 Total		1 278	763	110	54

D.1 遊樂船隻證書考試 ⁽¹⁾ Pleasure Vessel Certificate Examinations ⁽¹⁾	2006		2007	
	申請人數 Number of Application	及格人數 Number of Success	申請人數 Number of Application	及格人數 Number of Success
船長及輪機員 Master and Engineer				
船長 - 遊樂船隻 (考試) Master - Pleasure Vessel (Examination)	2 349	928	641	234
船長 - 遊樂船隻 (其他) Master - Pleasure Vessel (Other Services)	176	175	1	0
輪機員 - 遊樂船隻 (考試) Engineer - Pleasure Vessel (Examination)	2 832	1 509	549	261
輪機員 - 遊樂船隻 (其他) Engineer - Pleasure Vessel (Other Services)	124	123	0	0
總計 Total	5 481	2 735	1 191	495

表 27 – 續
TABLE 27 – Cont'd

D.2 本地合格證書 ⁽²⁾ Local Certificates of Competency ⁽²⁾	2007	
	申請人數 Number of Application	及格人數 Number of Success
1. 船長 Coxswain		
船長一級 Coxswain Grade 1	5	5
其它 Other Services	83	83
船長二級 Coxswain Grade 2	80	0
其它 Other Services	876	876
船長三級 Coxswain Grade 3	259	93
其它 Other Services	986	800
小計 Sub-total	2 289	1 857
2. 輪機操作員 Engine Operator		
輪機操作員一級 Engine Operator Grade 1	0	0
其它 Other Services	137	137
輪機操作員二級 Engine Operator Grade 2	7	0
其它 Other Services	8	8
輪機操作員三級 Engine Operator Grade 3	143	39
其它 Other Services	756	710
小計 Sub-total	1 051	894
總計 Total	3 340	2 751

D.3 遊樂船隻操作人合格證明書 ⁽²⁾ Pleasure Vessel Operator Certificate of Competency ⁽²⁾	2007	
	申請人數 Number of Application	及格人數 Number of Success
遊樂船隻操作人一級 Pleasure Vessel Operator Grade 1	50	26
其它 Other Services	501	501
遊樂船隻操作人二級 Pleasure Vessel Operator Grade 2	2 845	1 229
其它 Other Services	933	932
總計 Total	4 329	2 688

註釋： (1) 其他服務包括有關證書批註、豁免、重新生效等事宜的申請。

截至 2007 年 2 月 28 日根據《船舶及港口管制條例》(第 313 章)簽發的證書。

Notes: (1) Other services include applications for endorsement, exemption and revalidation etc.

Certificates issued under Cap. 313 Shipping and Port Control Ordinance upto 28.02.2007.

(2) 其他服務包括有關證書批註、豁免、重新生效等事宜的申請。

由 2007 年 3 月 1 日起根據《商船(本地船隻)條例》(第 548 章)簽發的證書。

(2) Other services include applications for endorsement, exemption and revalidation etc.

Certificates issued under Cap. 548 Merchant Shipping (Local Vessels) Ordinance from 01.03.2007.

表 27 – 續
TABLE 27 – Cont'd

E. 部門考試 Departmental Examinations		2006		2007	
		考試人數 Examined	及格人數 Passed	考試人數 Examined	及格人數 Passed
一級航行證書	1st Class Certificate of Navigation	9	9	0	0
二級航行證書	2nd Class Certificate of Navigation	0	0	0	0
三級航行證書	3rd Class Certificate of Navigation	0	0	0	0
一級本地船長	Coxswain Grade 1	11	11	0	0
二級本地船長	Coxswain Grade 2	11	1	65	17
三級本地船長	Coxswain Grade 3	22	14	33	8
一級小輪大偈	Launch Mechanic Class 1	3	3	0	0
二級小輪大偈	Launch Mechanic Class 2	0	0	0	0
三級小輪大偈	Launch Mechanic Class 3	0	0	0	0
一級輪機操作員	Engine Operator Grade 1	6	6	0	0
二級輪機操作員	Engine Operator Grade 2	25	11	16	6
三級輪機操作員	Engine Operator Grade 3	99	31	28	3
遊樂船隻船長	Pleasure Vessel Master	82	4	107	31
遊樂船隻輪機員	Pleasure Vessel Engineer	85	20	111	26
總計 Total		353	110	360	91

F. 其它考試/評定 Other Examinations/Assessments		2006		2007	
		申請人數 Number of Application	及格人數 Number of Success	申請人數 Number of Application	及格人數 Number of Success
救生艇筏熟練操作證書	Proficiency in Survival Craft Certificate	0	0	0	0
高級水手/水手證書	AB/EDH Certificate	0	0	0	0
船舶保安主任證書	Certificate of Proficiency of Ship Security Officer	0	0	197	197
類型級別證書 (考試、重新生效及夜航批准)	Type Rating Certificate (Examination, Revalidation and Night Service Approval)	501	498	599	598
香港執照	Hong Kong Licence	9 904	9 904	10 833	10 833
本地豁免	Local Exemption	243	243	13	13
總計 Total		10 648	10 645	11 642	11 641

資料來源： 海事處海員發證組
Data Source: Seafarers' Certification Section, MD

表 27 – 續
TABLE 27 – Cont'd

G. 截至 2007 年 12 月 31 日為止的海員註冊人數 Seafarer's Registration as at 31.12.2007			
根據第478章註冊的海員 Seafarers Registered Under Cap.478	第一部 Part I	第二部 Part II	合計 Total
		3 527	971

H. 2007 年所簽發的僱用登記簿數目 Employment Registration Books Issued, 2007		
續發簿	Subsequent Books	8
補發簿	Replacement Books	7
新海員簿	New Entrants Books	202
總計	Total	217

I. 2007 年海員就業統計數字 Seafarers Employment Statistics, 2007				
期間 Period	僱用海員方式 Seafarers Employed Through			
	核准公司名冊 Permitted C.R.	總名冊 G.R.	緊急僱用/重新僱用等 Emergency/Re-employment, etc.	總計 Total
2007年第一季 1st Quarter 2007	39	---	4	43
2007年第二季 2nd Quarter 2007	39	2	118	159
2007年第三季 3rd Quarter 2007	39	1	529	569
2007年第四季 4th Quarter 2007	212	4	1	217
總計 Total	329	7	652	988

表 27 – 續
TABLE 27 – Cont'd

J. 船公司及職位統計數字 Companies and Posts Statistics	
截至2007年12月31日為止在商船海員管理處登記僱用本港註冊海員的船公司數目 Shipping companies listed with M. M. Office to employ Hong Kong registered seafarers as at 31.12.2007	29
2007年按船公司所交周年報表而編製的本港海員就業職位 Posts filled by Hong Kong seafarers as compiled from annual returns submitted by shipping companies, 2007	1 435

K. 2007年訂立和終結的香港註冊船舶船員協議條款 Crew Agreement of Hong Kong Registered Ships Opened and Closed, 2007				
	所訂立的協議 Agreements Opened		終結的協議 Agreements Closed	
	在香港境內 In Hong Kong	在香港境外 Outside Hong Kong	在香港境內 In Hong Kong	在香港境外 Outside Hong Kong
船員協議條款數目 No. of agreements	57	833	58	755
總計 Total	890		813	

L. 香港註冊船舶僱用和解職的海員人次⁽¹⁾ Number of Employment and Discharge of Seafarers by Hong Kong Registered Ships⁽¹⁾			
	2005	2006	2007
所僱用的海員人次 No. of employment of seafarers	42 523	43 312	46 661
解職的海員人次 No. of discharge of seafarers	38 956	42 012	44 096

備註： 其他服務包括申請批註、豁免及重新生效等。

Remark: Other services including applications for endorsement, exemption and revalidation and etc.

註釋： (1) 數字包括在香港以外地方註冊的海員。

Note: (1) The figures include seafarers registered outside Hong Kong.

資料來源： (A) – (F) 海事處海員發證組
(G) – (L) 海事處註冊及商船海員管理處

Data Sources: (A) – (F) Seafarers' Certification Section, Marine Department
(G) – (L) Shipping Registry and Mercantile Marine Office, Marine Department

表 28
TABLE 28

香港註冊船舶統計資料
Statistics on Ships Registered in Hong Kong

A. 2006 和 2007 年年底的船舶數目和噸位
Number of Ships and Tonnage as at end of 2006 and 2007

	船舶數目 No. of ships	淨噸位 ⁽¹⁾ Net tonnage ⁽¹⁾	總噸位 ⁽¹⁾ Gross tonnage ⁽¹⁾
(i) 2006 年 12 月 31 日船舶註冊概況 ⁽²⁾ On register as at 31.12.2006 ⁽²⁾	1 150	18 759 525	32 528 574
(ii) 2007 年註冊的船舶 Ships Registered in the year of 2007	229	3 807 345	7 028 505
(iii) 2007 年取消註冊的船舶 Ships De-registered in the year of 2007	152	1 988 063	3 548 380
(iv) 2007 年 12 月 31 日船舶註冊概況 On register as at 31.12.2007	1 227	20 743 986	36 315 538

註釋： (1) 淨噸位及總噸位以每單位 100 立方呎計算。
(2) 因部分註冊船舶於 2006 年更改噸位，故 (i) + (ii) - (iii) 並不一定等於 (iv)。

Notes: (1) Net and gross tonnages are in units of 100 cubic feet.
(2) Due to alteration of tonnages of some ships already on register in 2006, (i) + (ii) - (iii) is not necessarily equal to (iv).

B. 按總噸位分析於 2007 年年底在香港註冊的船舶數目
Ships Registered in Hong Kong by Gross Tonnage Distribution, as at end of 2007

總噸位分配 Gross Tonnage Distribution	船舶數目 No. of Ships
500 以下 Under 500	139
500 - 999	52
1 000 - 1 999	26
2 000 - 2 999	6
3 000 - 3 999	24
4 000 - 4 999	26
5 000 - 9 999	123
10 000 - 14 999	61
15 000 - 19 999	148
20 000 - 24 999	56
25 000 - 29 999	137
30 000 - 34 999	59
35 000 - 39 999	127
40 000 - 44 999	42
45 000 - 49 999	14
50 000 - 59 999	30
60 000 - 69 999	20
70 000 - 79 999	0
80 000 - 89 999	26
90 000 - 99 999	64
100 000 - 149 999	18
150 000 及以上 - 150 000 and above	29
總計 Total	1 227

表 28 – 續
TABLE 28 – Cont'd

C. 按船隻種類分析於 2007 年度在香港註冊及取消註冊的船舶數目
Ship Registered and De-registered in Hong Kong by Ship Type during 2007

船隻種類 Ship Type	註冊船舶 Ship Registered		取消註冊船舶 Ship De-registered	
	船舶數目 No. of Ships	總噸位 Gross Tonnage	船舶數目 No. of Ships	總噸位 Gross Tonnage
散裝貨船 Bulk Carrier	63	2 237 456	68	1 960 163
化學品船 Chemical Tanker	18	377 751	4	35 971
集裝箱船 Container	48	1 918 674	13	228 467
氣體運輸船 Gas Carrier	2	27 233	5	27 035
雜貨船 General Cargo Ship	31	330 488	15	154 081
高速船 High Speed Craft	5	3 121	-	-
躉船 Lighter and Barge	2	25 216	4	26 481
油輪 Oil Tanker	31	1 210 024	22	927 639
其他運油船 Other Tanker	5	337 126	1	3 967
沙石/雜貨/ 油輪 Ore/Bulk/ Oil Carrier	8	387 319	2	87 880
滾裝卸式船 Roll On/Roll Off	4	103 960	3	94 133
專用船 Specialized Vessel	2	67 112	-	-
拖船 Tug	3	2 134	8	2 277
帆船/遊艇 Yacht	7	891	7	286
總計 Total	229	7 028 505	152	3 548 380

資料來源： 海事處船舶註冊處
Data Source: Shipping Registry, Marine Department

表 29
TABLE 29

政府船隊統計資料
Government Fleet Statistics

	項目	Items	2006	2007
1.	開支預算總額 ⁽¹⁾ (百萬元)	Total expenditure estimate ⁽¹⁾ (\$M)	373.4 ⁽²⁾	378.1 ⁽³⁾
2.	截至 12 月 31 日的政府船隊科員工總數 (包括船員)	Total no. of GFD staff (including crew) as at 31 st December	592	550
3.	(i) 建成及交付的政府新船	(i) Government new vessels built and delivered	9	28
	(ii) 建造中的政府新船	(ii) Government new vessels under construction	-	26
4.	新船招標/報價	Tenders/Quotations called for new vessels	7	10
5.	新船合約	Contracts awarded for new vessels	12	8
6.	已完成的合約及購買規格書	Contracts and procurements specifications completed	19	18
7.	(i) 政府船舶總數	(i) Total number of Government craft	755	744
	a. 大型機動船舶數目	a. number of major mechanized vessels	125 ⁽²⁾	124
	b. 其他類別船舶數目	b. number of remaining classes of craft	-	620
	(ii) 配備海事處人員的政府船舶	(ii) Government craft manned by Marine Department (MD)	-	52
	(iii) 海事處可供調配船員時數 (%)	(iii) MD crew staff time available for deployment (%)	-	88.7
8.	(i) 大型機動船舶的平均可用率 (%)	(i) Average Availability of major mechanized vessels (%)	87.9	88.8
	(ii) 大型機動船舶的平均數目	(ii) Average number of major mechanized vessels	125 ⁽²⁾	124.4
	(iii) 船舶維修保養後首次試航成功率 (%)	(iii) Vessel seatrial successful rate in first attempt after repair maintenance service (%)	-	88.0
	(iv) 政府船隊科維修保養服務使用者滿意度 (%)	(iv) Users satisfaction level on GFD repair maintenance service (%)	-	98.4
9.	大型機動船舶保養費總額 ⁽¹⁾ (百萬元)	Total maintenance cost of major mechanized vessels ⁽¹⁾ (\$M)	130.8 ⁽²⁾	127.9 ⁽³⁾
10.	大型機動船舶平均保養費 ⁽¹⁾ (百萬元)	Average maintenance cost of major mechanized vessels ⁽¹⁾ (\$M)	1.05 ⁽²⁾	1.03 ⁽³⁾
11.	(i) 船舶定期保養合約安排總數	(i) Total number of Vessel Maintenance term contract (TC) arrangements	-	41
	a. 根據合約安排保養的船舶數目	a. Number of vessels maintained under TC	86	105
	b. 根據合約安排維修的主機數目	b. Number of main engines repaired under TC	244	214
	(ii) 採購機械零件的定期合約數目	(ii) Number of TC for procurement of machinery spare parts	-	10
12.	配備海事處人員的政府船舶肇事個案	Accidents involving Government Craft manned by MD		
	(i) 肇事政府船舶數目	(i) Number of government vessels involved	12	14
	(ii) 工傷意外傷亡數目	(ii) Number of casualties in industrial accidents		
	a. 船塢員工	a. Dockyard staff	5	1
	b. 船員	b. Crew	11	15
	(iii) 因工傷損失人-日總數	(iii) Total Number of man-days lost		
	a. 船塢員工	a. Dockyard staff	31	73
	b. 船員	b. Crew	123	81
13.	參加職業安全及健康課程的政府船塢人員數目	Number of Attendees of Government Dockyard to Occupational Safety and Health (OSH) training courses		
	(i) 職業安全健康局舉辦的課程	(i) Organized by the OSH Council	31	4
	(ii) 政府船隊科工業安全組舉辦的課程	(ii) Organized by the Industrial Safety Section, GFD	198	134
	(iii) 其他職安健課程	(iii) Other OSH courses	54	176

註釋： (1) 指財政年度內的數字 (本年四月一日至下年三月三十一日)。

Notes: (1) Refer to financial year figures (i.e. from 1 April of current year to 31 March of next year)

(2) 修定數字

(2) Revised Figures

(3) 估計數字

(3) Estimated figures

表 30
TABLE 30

政府船舶所屬部門及可用率 (截至 2007 年 12 月 31 日)
Departmental Ownership and Availabilities of Government Vessels (as at 31 December 2007)

所屬部門 Departmental Ownership	泳灘 船艇 Beach Crafts	泳灘 浮台 Beach Rafts	小艇 Dinghies	充氣式 橡皮艇 Inflatable Boats	駁船 Lighters	大型機動 船舶 Major Mechanized Vessels	快艇 Speed Boats	總計 Total	大型機動船 平均可用率 Average Availability of Major Mechanized Vessels (%)
漁農自然護理署 AFCD	-	-	8	4	-	3	10	25	94.0
醫療輔助隊 AMS	-	-	-	1	-	-	-	1	-
民眾安全服務處 CAS	-	-	2	8	-	-	-	10	-
土木工程拓展署 CEDD	-	-	-	-	-	3	-	3	92.0
懲教署 CSD	-	-	-	-	-	2	-	2	90.9
香港海關 C&ED	-	-	-	8	-	7	6	21	87.1
環境保護署 EPD	-	-	-	1	-	1	-	2	90.2
消防處 FSD	-	-	-	18	-	9	10	37	86.8
衛生署 DH	-	-	-	-	-	3	-	3	88.1
香港警務處 HKPF	-	-	2	57	6	55	43	163	88.3
入境事務處 Imm D	-	-	-	-	-	7	-	7	84.8
康樂及文化事務署 LCSD	247	37	21	87	-	-	1	393	-
海事處 MD	-	-	4	3	23	32	7	69	90.4
水務署 WSD	-	-	2	3	-	2	1	8	97.4
總計 Total	247	37	39	190	29	124	78	744	88.8

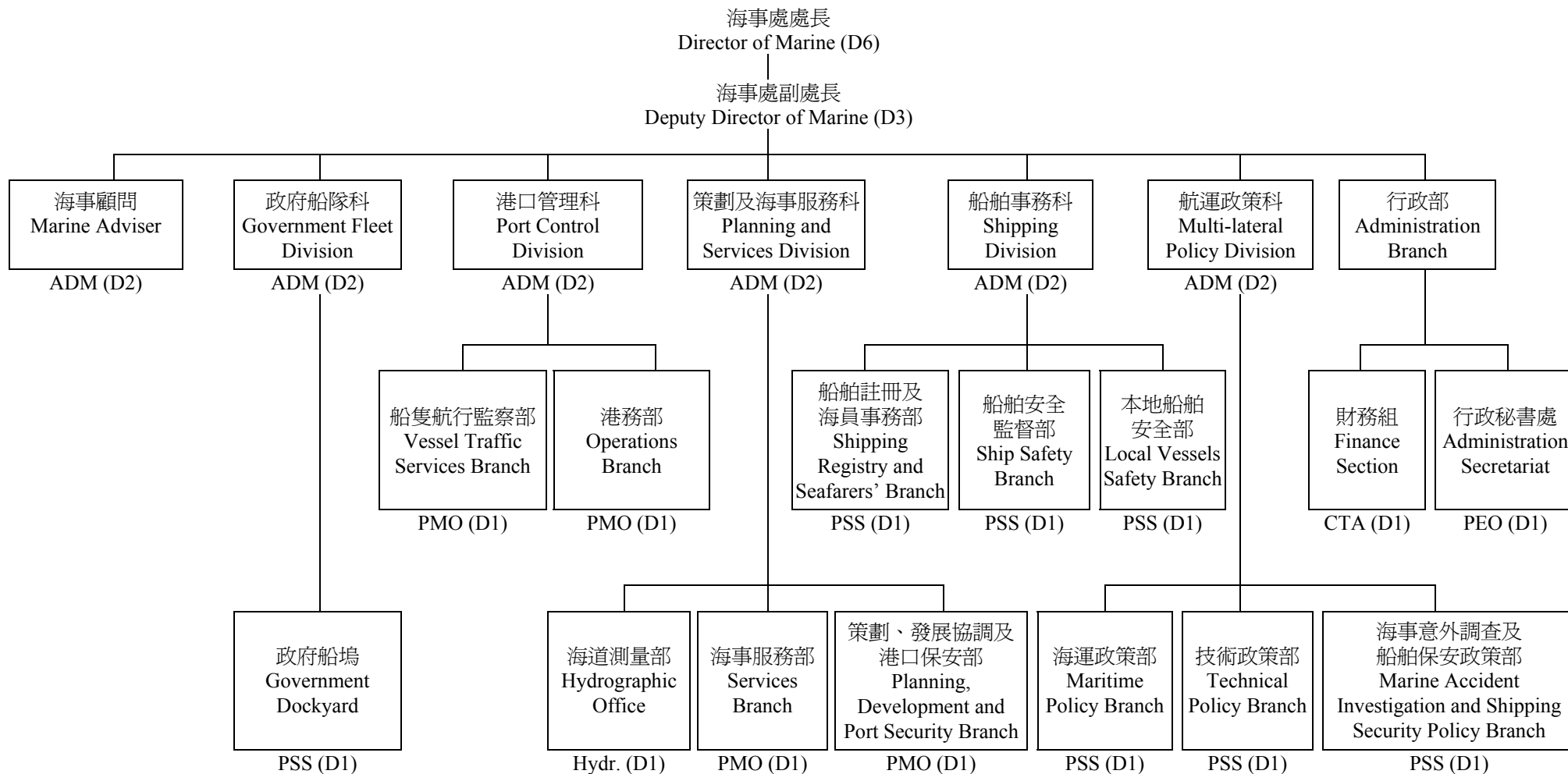
資料來源： 海事處政府船隊科
Data Source: Government Fleet Division, MD

附錄

Appendices

附錄 A
APPENDIX A

海事處組織架構圖
Marine Department Organization Chart



- 圖例： Legend:
- | | | | |
|---------------|------------------------------|---------------------|---------------------------------|
| ADM = 海事處助理處長 | Assistant Director of Marine | PEO = 首席行政主任 | Principal Executive Officer |
| PMO = 首席海事主任 | Principal Marine Officer | CTA = 總庫務會計師 | Chief Treasury Accountant |
| PSS = 首席驗船主任 | Principal Surveyor of Ships | D6 = 首長薪級第六點 (如此類推) | Directorate Level 6 (and so on) |
| Hydr. = 海道測量師 | Hydrographer | | |

附錄 B
APPENDIX B

海事處的編制和實際員額 (截至 2007 年 12 月 31 日)
Marine Department Establishment and Strength (as at 31 December 2007)

首長級人員 Directorate Officers		編制 Establishment	實際員額 Strength
海事處處長	Director of Marine (D6)	1	1
海事處副處長	Deputy Director of Marine (D3)	1	0
海事處助理處長	Assistant Director of Marine (D2)	6	6
首席海事主任	Principal Marine Officer (D1)	4	4
首席驗船主任	Principal Surveyor of Ships (D1)	7	7
首席行政主任	Principal Executive Officer (D1)	1 +1 [♦]	2
總庫務會計師	Chief Treasury Accountant (D1)	1	1
海道測量師	Hydrographer (D1)	1	1
部門職系 Departmental Grade			
高級海事主任	Senior Marine Officer	18	17
海事主任	Marine Officer	39 +1 [♦]	31
海事監督	Marine Controller	13	13
助理海事監督	Assistant Marine Controller	48 +2 [♦]	41
高級船舶安全主任	Senior Shipping Safety Officer	1 +1 [♦]	2
船舶安全主任	Shipping Safety Officer	8	4
高級驗船主任	Senior Surveyor of Ships	16	16
驗船主任	Surveyor of Ships	25	23
高級助理船務主任	Senior Assistant Shipping Master	19 +1 [♦]	19
助理船務主任	Assistant Shipping Master	2	1
一級海事督察	Marine Inspector I	77 +3 [♦]	78
二級海事督察	Marine Inspector II	104	88
輔航設備監督	Superintendent of Aids to Navigation	1	1
助理輔航設備監督	Assistant Superintendent of Aids to Navigation	2	2
總驗船督察	Chief Ship Inspector	2	2
高級驗船督察	Senior Ship Inspector	10	9
驗船督察	Ship Inspector	24 +1 [♦]	20
助理驗船督察	Assistant Ship Inspector	1	0

附錄 B - 續
APPENDIX B - Cont'd

部門職系 Departmental Grade		編制 Establishment	實際員額 Strength
小輪船員督導員	Launch Crew Supervisor	3 +3 [♦]	5
高級小輪船長	Senior Launch Master	65 +3 [♦]	61
小輪船長	Launch Master	50 +2 [♦]	49
小輪助理員	Launch Assistant	239	224
高級小輪大偈	Senior Launch Mechanic	2 +1 [♦]	2
小輪大偈	Launch Mechanic	1	1
海事工業安全督察	Marine Industrial Safety Inspector	8 +1 [♦]	8
測量服務員	Surveyor Attendant	1 +1 [♦]	1
一般職系 General Grade			
高級統計師	Senior Statistician	1	1
一級統計主任	Statistical Officer I	1	1
二級統計主任/ 見習統計主任	Statistical Officer II/ Student Statistical Officer	2	2
系統經理	Systems Manager	1	1
一級系統分析/ 程序編製主任	Analyst/Programmer I	4	3
二級系統分析/ 程序編製主任	Analyst/Programmer II	2	3
高級庫務會計師	Senior Treasury Accountant	1	1
庫務會計師	Treasury Accountant	3	2
高級會計主任	Senior Accounting Officer	1	1
一級會計主任	Accounting Officer I	1	0
二級會計主任	Accounting Officer II	3	4
總行政主任	Chief Executive Officer	1	0
高級行政主任	Senior Executive Officer	1	2
一級行政主任	Executive Officer I	7	5
二級行政主任	Executive Officer II	2	3
高級法定語文主任	Senior Official Languages Officer	1	0
一級法定語文主任	Official Languages Officer I	2	3
二級法定語文主任	Official Languages Officer II	1	1

附錄 B - 續
APPENDIX B - Cont'd

一般職系 General Grade		編制 Establishment	實際員額 Strength
高級電子工程師	Senior Electronics Engineer	1	1
電子工程師/ 助理電子工程師	Electronics Engineer/ Assistant Electronics Engineer	2	2
土地測量師/ 助理土地測量師	Land Surveyor/ Assistant Land Surveyor	2	2
電子督察	Electronics Inspector	1	1
助理空氣調節督察	Assistant Air-Conditioning Inspector	1	1
首席技術主任 (製圖)	Principal Technical Officer (Cartographic)	1	1
高級技術主任 (製圖)	Senior Technical Officer (Cartographic)	2	2
技術主任 (製圖)/ 見習技術主任 (製圖)	Technical Officer (Cartographic)/ Technical Officer Trainee (Cartographer)	5	5
高級文書主任	Senior Clerical Officer	6 +1 [♦]	6
文書主任	Clerical Officer	28	28
助理文書主任	Assistant Clerical Officer	67	65
文書助理	Clerical Assistant	116	116
辦公室助理員	Office Assistant	10	10
高級物料供應主任	Senior Supplies Officer	1	1
物料供應主任	Supplies Officer	1	1
助理物料供應主任	Assistant Supplies Officer	1	1
一級物料供應員	Supplies Supervisor I	2	2
二級物料供應員	Supplies Supervisor II	11	11
助理物料供應員	Supplies Assistant	3	3
物料供應服務員	Supplies Attendant	4	4
高級私人秘書	Senior Personal Secretary	1	1
一級私人秘書	Personal Secretary I	6	5
二級私人秘書	Personal Secretary II	20 +1 [♦]	20
打字督導	Supervisor of Typing Services	1	1
機密檔案室助理	Confidential Assistant	1	1
繕校員	Calligraphist	2	2
打字員	Typist	6	6
汽車司機	Motor Driver	4 +1 [♦]	5

附錄 B - 續
APPENDIX B - Cont'd

共通職系 Common Grade		編制 Establishment	實際員額 Strength
總技術主任	Chief Technical Officer	2	2
高級電氣督察	Senior Electrical Inspector	2	2
電氣督察	Electrical Inspector	4	3
助理電氣督察	Assistant Electrical Inspector	2	2
高級機械督察	Senior Mechanical Inspector	6	6
機械督察	Mechanical Inspector	11	11
助理機械督察	Assistant Mechanical Inspector	3	2
首席測量主任 (工程)	Principal Survey Officer (Engineering)	1	1
高級測量主任 (工程)	Senior Survey Officer (Engineering)	4	4
測量主任 (工程)/ 見習測量主任 (工程)	Survey Officer (Engineering)/ Survey Officer Trainee (Engineering)	11	11
一級監工	Works Supervisor I	12 +1 [♦]	13
二級監工	Works Supervisor II	7	6
高級技工	Senior Artisan	39 +3 [♦]	30
技工	Artisan	104 +5 [♦]	99
丈量員	Chainman	4	4
產業看管長	Head Property Attendant	1	1
產業看管員	Property Attendant	4	4
二級工人	Workman II	30 +2 [♦]	28
總計	Total	1 389	1 306

- ♦ 編外職位
- ♦ Supernumerary post

附錄 C
APPENDIX C

2007 年海事處訓練組舉辦的課程
Training Courses Conducted by Training Section, Marine Department in 2007

課程名稱 Course Title	學期 Duration	參加學員@ Target Participants @	班級數目 Number of Classes	學員數目 Number of Participants
1. 香港水域自動雷達標繪儀和高速船雷達課程 ARPA and High Speed Craft Radar for Hong Kong Waters	3 days	LM, C&E, Marpol	2	16
2. 香港水域雷達操作員課程 Radar Operator Course for Hong Kong Waters	7 days	MI, C&E, FSD	3	24
3. 基本小型船舶操縱技術課程 Basic Boat Handling Skills Course	5 days	LA, C&E, FSD	2	12
4. 一級海事督察深造課程 MI I Enhancement Course	25 days	MI I	1	4
5. 民安隊海上油污訓練課程 CAS Oil Pollution Course	2 days	CAS	3	52
6. 海上油污訓練課程 Oil Pollution Course	1 day	LCSD	2	28
7. 航行安全工作坊 Navigation Safety Workshop	½ day	FSD	2	35
8. 政府人員基本海事知識課程 Basic Maritime Knowledge for Government Officers	3 days	C&E	1	8
9. 領港員模擬船操縱課程 Pilotage Simulation Course	1-3 days	HKPA(A)	2	3
10. 搜尋現場協調員課程 On Scene Co-ordinator Course	5 days	Marpol, GFS, FSD, MD	2	23
11. 全球海上遇險及安全系統 - 限用無線電(短距離) 課程 GMDSS Restricted Certificate Course in R/T (Short Range)	4 days	C&E, Marpol	1	6
12. 船舶交通服務監督員增強課程 VTS Enhancement Course for Supervisor	2 days	MC, AMC	1	4
13. 船舶交通服務操作員深造課程 - 海外人士 VTS Operator Enhancement Course - Overseas	10 days	CHI(VTS)	4	24
14. 船舶交通服務重新生效課程 VTS Revalidation Course	2 days	MC, AMC	1	4
15. 船舶交通服務操作員增強課程 VTS Enhancement Course for Operator	5 days	SMO, MO	1	3
16. 個人品性訓練課程 Personal Attribute Course	1 day	SMO, MO	1	4
17. 船隻排放過量黑煙檢舉員課程 Smoky Vessel Spotters Training Course	½ day	Public	3	76
總計 Total			32	326

@ 請參閱下頁的參加學員編碼目錄。

@ Please refer to the coding table of target participants on the next page.

附錄 C – 續
APPENDIX C – Cont'd

參加海事處在二零零七年舉辦的訓練課程的職位及機構：

List of Organisations/Posts Participated in the Training Courses Conducted by Marine Department in 2007: -

機構	Orgainsations	縮寫 Abbreviation
香港海關	Customs and Excise Department	C&E
民眾安全服務處	Civil Aid Service	CAS
中國(船隻航行服務)官員	Chinese (VTS) Personnel	CHI(VTS)
消防處	Fire Services Department	FSD
政府飛行服務隊	Government Flying Service	GFS
香港領港會(見習領港員)	Hong Kong Pilot Association (Apprentice Pilots)	HKPA(A)
康樂及文化事務處	Leisure and Cultural Services Department	LCSD
香港水警	Marine Police	Marpol
海事處	Marine Department	MD
市民	Members of Public	Public
職位	Posts	縮寫 Abbreviation
助理海事監督	Assistant Marine Controller	AMC
小輪助理員	Launch Assistant	LA
小輪船長	Launch Master	LM
海事監督	Marine Controller	MC
一級海事督察	Marine Inspector I	MI I
海事主任	Marine Officer	MO
高級海事主任	Senior Marine Officer	SMO

附錄 D
APPENDIX D

2007 年海事處訪客
Visitors of the Marine Department, 2007

本處於 2007 年接待了以下訪客：

During the year of 2007, the Department hosted the following visitors: -

編號 No.	訪問日期 Date of Visit	機構/代表 Organization/Representative
1.	11.01.2007	航海學會香港分會 Nautical Institute, Hong Kong Branch
2.	18.01.2007 – 20.01.2007	廣東及北京漁檢局代表 Registers of Fishing Vessel of Guangdong & Beijing Representatives
3.	01.02.2007	港九電船拖輪商會代表 Hong Kong & Kowloon Motor Boats & Tug Boats Association Representatives
4.	14.02.2007	香港理工大學伍占美博士 Dr. Jimmy NG of Hong Kong Polytechnic University
5.	08.03.2007	廣州港務局 Guangzhou Port Authority
6.	13.03.2007	商務部台港澳司巡視員陳星女士 Ms. Chen Xing, Director-General of the Department of Taiwan, Hong Kong and Macao Affairs, Ministry of Commerce
7.	16.3.2007	廣東海事局 Guandong Maritime Safety Administration
8.	19.03.2007	大連港代表團 Dalian Port Official
9.	12.04.2007	行政長官曾蔭權先生 Mr. Donald TSANG Yam-kuen, the Chief Executive
10.	09.05.2007	南華船務公司代表 South China Shipping Co. Representative
11.	09.05.2007	廣東海事局 Guandong Maritime Safety Administration
12.	10.05.2007	青年總裁協會香港分會 Young Presidents' Organisation - Hong Kong Chapter
13.	10.05.2007 – 11.05.2007	廣東海事局 Guandong Maritime Safety Administration
14.	15.05.2007	英國港口人員 Visitor from a UK Port
15.	18.05.2007	澳洲紐卡斯爾港口公司 Newcastle Port Corporation, Australia
16.	04.06.2007	出席波羅的海和國際海運理事會大會的歐盟委員會代表 Delegates of the EU Commission attending the BIMCO General Meeting

附錄 D – 續
APPENDIX D – Cont'd

本處於 2007 年接待了以下訪客：

During the year of 2007, the Department hosted the following visitors: -

編號 No.	訪問日期 Date of Visit	機構/代表 Organization/Representative
17.	12.06.2007	中央人民政府駐香港特別行政區聯絡辦公室 Liaison Office of the Central People's Government in HKSAR
18.	12.06.2007	愉景灣航運服務有限公司代表陳先生 Discovery Bay Transportation Services Ltd. Representative Mr. CHAN
19.	13.06.2007 – 15.06.2007	廣東海事局 Guangdong Maritime Safety Administration
20.	26.06.2007	法國敦刻爾克港人員 Visitors from the Port of Dunkirk, France
21.	28.06.2007	香港海員公會代表 Hong Kong Seamen's Union Representative
22.	12.07.2007 – 13.07.2007	廣東海事局 Guangdong Maritime Safety Administration
23.	17.07.2007	東方海外貨櫃航運有限公司代表 OOCL Ltd. Representative
24.	18.07.2007 – 20.07.2007	深圳海事局 Shenzhen Maritime Safety Administration
25.	02.08.2007	肯亞政府代表團 Delegation from Kenya Government
26.	28.08.2007	馬來西亞海事廳 Malaysia Marine Department
27.	30.08.2007	美國洛杉磯港人員 Visitors from the Port of Los Angeles, USA
28.	04.09.2007	澳洲海上安全局首席執行官 Chief Executive Officer of the Australian Maritime Safety Authority
29.	06.09.2007	香港百通航運有限公司 Pacifictop Shipping Ltd. (HK)
30.	10.09.2007	美國運輸部 United States Department of Transportation
31.	21.09.2007	國際貨物裝卸協調協會非洲分會代表團 Delegation from the Africa Regional Chapter of the International Cargo Handling Coordination Association
32.	27.09.2007	廣東海事局 Guangdong Maritime Safety Administration
33.	04.10.2007	泰國海事廳、預算局及泰國航空無線電有限公司代表團 Delegation from Marine Department, Bureau of the Budget and the Aeronautical Radio of Thailand

附錄 D – 續
APPENDIX D – Cont'd

本處於 2007 年接待了以下訪客：

During the year of 2007, the Department hosted the following visitors: -

編號 No.	訪問日期 Date of Visit	機構/代表 Organization/Representative
34.	24.10.2007	日本清水港訪問團 Shimizu Port Mission, Japan
35.	24.10.2007	美國塔科馬港代表團 Delegation from the Port of Tacoma, USA
36.	31.10.2007	廣東海事局 Guangdong Maritime Safety Administration
37.	08.11.2007	大連海事大學校長王祖溫先生 Mr. Wang Zuwen, President of Dalian Maritime University
38.	15.11.2007	中石化（香港）有限公司總經理張先生及代表 Sinopec (HK) Ltd. General Manager Mr. CHEUNG and Representative
39.	19.11.2007	香港理工大學機械工程學系 Department of Mechanical Engineering, Hong Kong Polytechnic University
40.	19.11.2007	廣東海事局 Guangdong Maritime Safety Administration
41.	23.11.2007	中華人民共和國交通部水運司 Department of Water Transport, Ministry of Communications
42.	28.11.2007	香港大學專業進修附屬學院物流學會 Logistics Society, HKU SPACE Community College
43.	28.11.2007 – 30.11.2007	深圳海事局 Shenzhen Maritime Safety Administration
44.	03.12.2007	香港理工大學機械工程學系 Department of Mechanical Engineering, Hong Kong Polytechnic University
45.	09.12.2007	加泰羅尼亞巴塞羅那物流中心 Barcelona – Catalunya Centre Logistic
46.	09.12.2007	馬來西亞財務部、Pelaburan Hartanah Bumiputera Berhad 及馬來西亞資源集團的 11 人代表團 A delegation of 11 persons from Malaysia Ministry of Finance together with Pelaburan Hartanah Bumiputera Berhad and Malaysian Resources Corporation Berhad
47.	18.12.2007	廣州海事法院考察團 Study Mission, Guangzhou Maritime Court

附錄 E
APPENDIX E

2007 年新訂海事法例
New Maritime Legislation, 2007

二零零七年一月一日至二零零七年十二月三十一日期間通過的海事及航運法例列載如下：
The following maritime and shipping legislation was enacted during the year under review
(1.1.2007 –31.12.2007):

法例名稱 Title	法例編號 L.N. No.
商船(防止污水污染)規例 Merchant Shipping (Prevention of Pollution by Sewage) Regulation	287/2006
商船(防止及控制污染)(費用)規例 Merchant Shipping (Prevention and Control of Pollution) (Fees) Regulation	8/2005; 287/2006

附錄 F
APPENDIX F

2007 年輔航設備
Aids to Navigation, 2007

A. 使用中的輔航設備

AIDS TO NAVIGATION IN USE

	輔航設備 AIDS TO NAVIGATION	截至 2007 年 12 月 31 日 as at 31.12.2007
1.	燈浮標 Lighted Buoy	121
2.	燈航標 Lighted Beacon	412
3.	雷達應答標 Racon	1
4.	霧角 Fog Horn	7

B. 本年新設的輔航裝置

NEW AIDS ESTABLISHED DURING THE YEAR

1.	馬料水碼頭 Ma Liu Shui Pier	一個以太陽能操作的新燈航標於 3 月 5 日設立，用以標示馬料水碼頭。 A solar power operated light was established to mark the Ma Liu Shui Pier on 5-3-07.
2.	赤柱卜公碼頭 Stanley Blake Pier	一個以太陽能操作的新燈航標於 7 月 9 日設立，用以標示赤柱卜公碼頭。 A solar power operated light was established to mark the Stanley Blake Pier on 9-7-07.
3.	中環 9 號碼頭 Central Pier 9	一個以太陽能操作的新燈航標於 9 月 11 日設立，用以標示中環 9 號碼頭。 A solar power operated light was established to mark the Central Pier 9 on 11-9-07.
4.	西貢公眾碼頭東北 Sai Kung Public Pier NE	一個以太陽能操作的新燈航標於 10 月 31 日設立，用以標示西貢公眾東北碼頭。 A solar power operated light was established to mark the Sai Kung Public Pier NE on 31-10-07.
5.	白石角碼頭南 Pak Shek Kok Pier S.	一個以太陽能操作的新燈航標於 11 月 30 日設立，用以標示白石角南碼頭。 A solar power operated light was established to mark the Pak Shek Kok Pier S on 30-11-07.
6.	白石角碼頭北 Pak Shek Kok Pier N.	一個以太陽能操作的新燈航標於 11 月 30 日設立，用以標示白石角北碼頭。 A solar power operated light was established to mark the Pak Shek Kok Pier N on 30-11-07.

C. 本年拆除的輔航裝置

AIDS DISCONTINUED DURING THE YEAR

1.	皇后碼頭東 Queen's Pier E.	這個燈航標於 8 月 20 日永久終止服務。 The lighted beacon was permanently withdrawn from service on 20-8-07.
2.	皇后碼頭西 Queen's Pier W.	這個燈航標於 8 月 20 日永久終止服務。 The lighted beacon was permanently withdrawn from service on 20-8-07.

附錄 F – 續
APPENDIX F – Cont'd

**D. 本年遭損毀的輔航裝置
AIDS DAMAGED DURING THE YEAR**

下列燈浮標遭損毀，航標燈熄滅。
The lighted buoys listed below were damaged and unlit.

月份 Month	地區	Location
1月 January	奇力西	Kellett West
	石鼓洲	Shek Kwu Chau
	青衣西	Tsing Yi West
2月 February	藍塘 1	TCS1
3月 March	小鴉洲北	Siu A Chau North
	北航 3	Northern 3
5月 May	博寮 3	LCS 3
	北航 3	Northern 3
6月 June	南丫電力 1	P 1
7月 July	博寮 3	LCS 3
	西錨	WA
	北航 3	Northern 3
	繫泊浮泡 A39	Mooring Buoy A39
	繫泊浮泡 A70	Mooring Buoy A70
8月 August	繫泊浮泡 A46	Mooring Buoy A46
	繫泊浮泡 B31	Mooring Buoy B31
9月 September	繫泊浮泡 A43	Mooring Buoy A43
	繫泊浮泡 A79	Mooring Buoy A79
10月 October	繫泊浮泡 IMM TM	Mooring Buoy IMM TM
11月 November	東航 2	Eastern 2
	北航 3	Northern 3
	繫泊浮泡 A39	Mooring Buoy A39
	繫泊浮泡 A43	Mooring Buoy A43
12月 December	青衣西	Tsing Yi West
	繫泊浮泡 A78	Mooring Buoy A78

附錄 F – 續
APPENDIX F – Cont'd

**E. 本年改進的輔航裝置
AIDS REPROVISIONED DURING THE YEAR**

1. 下列燈航標已換上全新現代化器材，用以提高光達距離。
The lighted beacons listed below were upgraded with modern equipment for better luminous range.

月份 Month	地區	Location
1月 January	西貢 2	Sai Kung 2
2月 February	西貢 1	Sai Kung 1
3月 March	醉酒灣 3	Rambler Channel 3
	醉酒灣 4	Rambler Channel 4
4月 April	中港 3	C F T 3
	中港 4	C F T 4
	黃金海岸 1	Gold Coast 1
	黃金海岸 2	Gold Coast 2
5月 May	船灣 1 和 2	Shuen Wan 1 and 2
6月 June	長洲 1、2、3 和 4	Cheung Chau 1, 2, 3 and 4
	鹽田仔 1	Yim Tin Tsai 1
	鹽田仔 2	Yim Tin Tsai 2
	沙頭角 1	Sha Tau Kok 1
8月 August	沙頭角 2	Sha Tau Kok 2
	黃金海岸 3	Gold Coast 3
	三家村 1	Sam Ka Tsuen 1
10月 October	龍珠島	Pearl Island
11月 November	三家村 2	Sam Ka Tsuen 2
	青洲	Green Island
12月 December	燈籠洲	Tang Lung Chau
	爛排	Laan Pai
	稔灣	Nim Wan
	爛角咀	Black Point

附錄 F – 續
APPENDIX F – Cont'd

E. 本年改進的輔航裝置 (續)

AIDS REPROVISIONED DURING THE YEAR (Cont'd)

2. 下列燈航標已換上全新現代化器材，用以提高其可靠性。

The lighted beacons listed below were replaced with modern equipment for higher reliability.

月份 Month	地區	Location
3 月 March	大利橋南 1、2、3 和 4	Tai Lei Bridge South 1, 2, 3 and 4
	汀九橋西紅	Ting Kau Bridge West Red
	后海灣 I	Deep Bay I
4 月 April	長洲 A	Cheung Chau A
5 月 May	大利橋南 5、6、7 和 8	Tai Lei Bridge South 5, 6, 7 and 8
	青馬橋墩 3	Tsing Ma Bridge Pier 3
6 月 June	大利橋南 9、10、11 和 12	Tai Lei Bridge South 9, 10, 11 and 12
	草灣碼頭	Tso Wan Pier
7 月 July	青荃橋北綠	Tsing Tsuen Bridge North Green
	后海灣 G	Deep Bay G
7 月 July	大利橋北 1、2、3、4、5、6、7、8、9、10、11 和 12	Tai Lei Bridge North 1, 2, 3, 4, 5, 6, 7, 8, 9, 10, 11 and 12
8 月 August	大澳 4	Tai O 4
9 月 September	堅尼地城東	Kennedy Town Dolphin E
10 月 October	青馬橋墩 5	Tsing Ma Bridge Pier 5
	鶴咀	Cape D'Aguilar
	鹿頸	Luk Keng
11 月 November	銀洲	Ngan Chau
	北長洲石	Adamasta Rock

附錄 F – 續
APPENDIX F – Cont'd

E. 本年改進的輔航裝置 (續)

AIDS REPROVISIONED DURING THE YEAR (Cont'd)

3. 下列燈航標已更換太陽能電池，用以提高航標的可靠性。

The solar batteries of the lighted beacons listed below were renewed in order to increase reliability.

月份 Month	地區	Location
1 月 January	海尾灣 (交通燈)	Hoi Mei Wan (Traffic Light)
2 月 February	政府船塢 2	G D 2
	廈門灣碼頭	Hap Mun Wan Pier
3 月 March	北小鴉洲	North Siu A Chau
4 月 April	沙螺灣	Sha Lo Wan
	鹽田仔碼頭	Yim Tin Tsai Pier
	大頭洲碼頭	Tai Tau Chau Pier
	燈洲	Tang Chau
	南沙甫	Nam Shan Po
5 月 May	鴨洲碼頭	Ap Chau Pier
	沙橋頭碼頭	Sha Kiu Tau Pier
6 月 June	九龍公眾碼頭西	Kowloon Public Pier W.
	荔枝窩碼頭	Lai Chi Wo Pier
7 月 July	鳳凰笏	Fung Wong Wat
	刀頭咀	To Tau Tsui
8 月 August	企人石	Kei Yan Shek
	蜆排	Hin Pai
	杉排	Cham Pai
	伙頭墳洲	Fo Tau Fan Chau
9 月 September	沙田海	Shatin Hoi
	塔門漁民村碼頭	Tap Mun Fisherman's Village Pier
10 月 October	汲水門橋墩 1	Kap Shui Mun Bridge Pier 1
	高馬石	Comber Rock
11 月 November	蒲苔	Po Toi
	筲箕灣 1	Shau Kei Wan 1
12 月 December	土瓜灣 4	To Kwa Wan 4
	青荃橋南綠	Tsing Tsuen Bridge South Green
	雙仙角 (導引燈)	Gemini Point (Leading Light)

附錄 F – 續
APPENDIX F – Cont'd

E. 本年改進的輔航裝置 (續)
AIDS REPROVISIONED DURING THE YEAR (Cont'd)

4. 下列燈航標的太陽能發電板數目已增加，用以提高航標的可靠性。
The numbers of solar panel of the lighted beacons listed below were increased to enhance reliability.

月份 Month	地區	Location
11 月 November	北長洲石東南	Adamasta Rock SE
	北航 3	Northern 3
12 月 December	屯門 1	Tuen Mun 1

F. 工場員工與輔航燈比例
RATIO OF WORKSHOP STAFF TO AIDS

年份 Year	員工 ⁽¹⁾ Staff ⁽¹⁾		輔航燈 Aids		比例 Ratio
		(%)		(%)	
1989	31	(+10.7)	307	(-2.2)	9.9
1990	34	(+9.7)	319	(+3.9)	9.4
1991	34	(0)	326	(+2.2)	9.6
1992	34	(0)	327	(+0.3)	9.6
1993	40	(+17.6)	356	(+8.9)	8.9
1994	40	(0)	375	(+5.3)	9.4
1995	37	(-7.5)	379	(+1.1)	10.2
1996	36	(-2.7)	380	(+0.3)	10.6
1997	32	(-11.1)	395	(+3.9)	12.3
1998	29	(-9.4)	432	(+9.4)	14.9
1999	27	(-6.9)	463	(+7.2)	17.1
2000	27	(0)	468	(+1.1)	17.3
2001	25	(-7.4)	482	(+3.0)	19.3
2002	27	(+8.0)	483	(+0.2)	17.9
2003	27	(0)	497	(+2.9)	18.4
2004	27	(0)	509	(+2.4)	18.9
2005	25	(-7.4)	518	(+1.8)	20.7
2006	23	(-8.0)	529	(+2.1)	23.0
2007	23	(0)	533	(+0.8)	23.2

註釋： (1) 不包括負責在香港水域範圍內看管繫船設備/檢修浮泡的 4 位員工。

Note: (1) Excluding the four staffs who are responsible for looking after the mooring facilities/overhaul of buoys within Hong Kong Waters