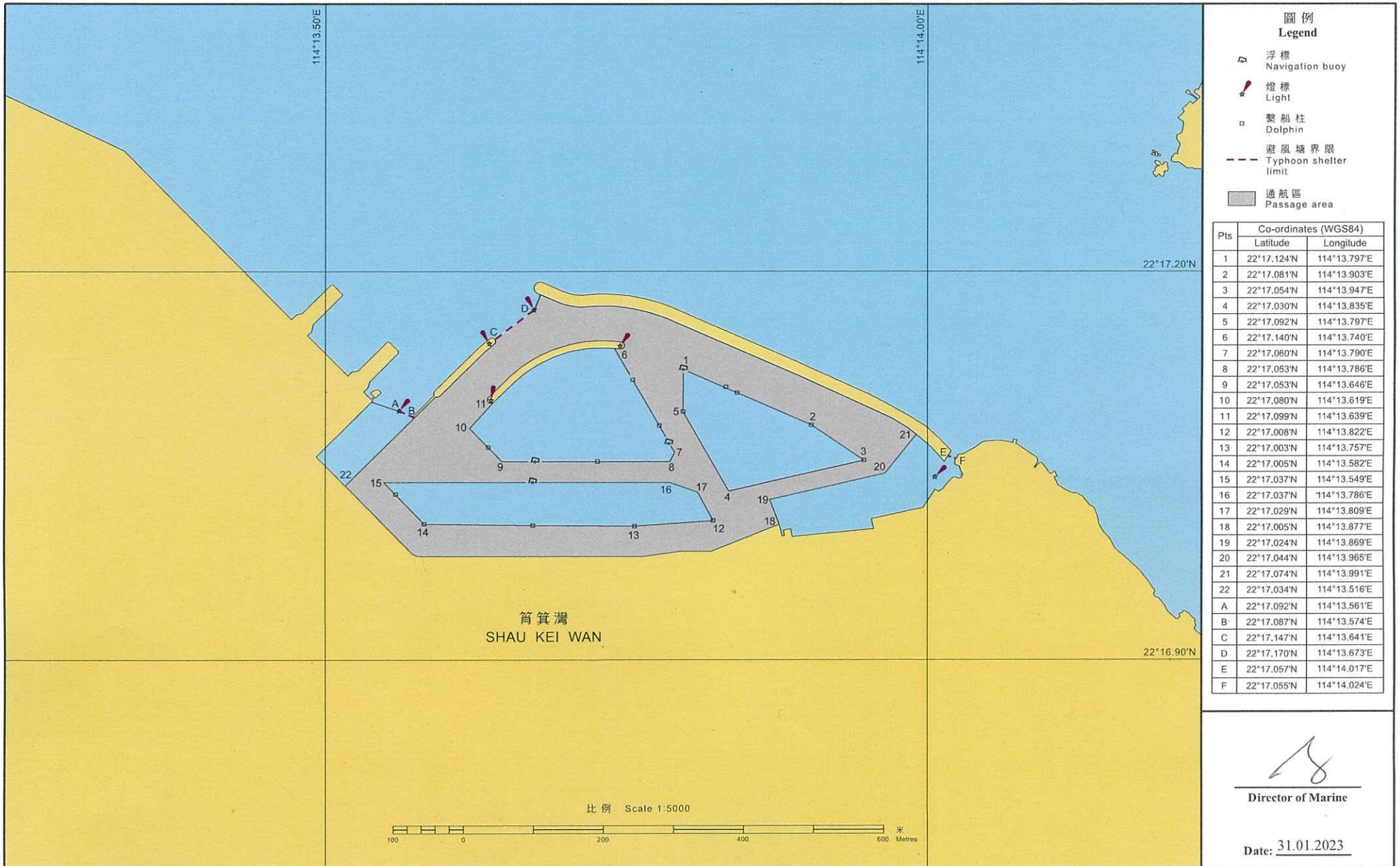


根據《商船(本地船隻)(避風塘)規例》(第548E章)第3條規定

筲箕灣避風塘通航區圖則

Pursuant to Section 3 of the Merchant Shipping (Local Vessels) (Typhoon Shelters) Regulation (Cap. 548E)

Plan of Passage Area in Shau Kei Wan Typhoon Shelter



圖例
Legend

- 浮標
Navigation buoy
- 燈標
Light
- 繫船柱
Dolphin
- 避風塘界限
Typhoon shelter limit
- 通航區
Passage area

Pts	Co-ordinates (WGS84)	
	Latitude	Longitude
1	22°17.124'N	114°13.797'E
2	22°17.081'N	114°13.903'E
3	22°17.054'N	114°13.947'E
4	22°17.030'N	114°13.835'E
5	22°17.092'N	114°13.797'E
6	22°17.140'N	114°13.740'E
7	22°17.060'N	114°13.790'E
8	22°17.053'N	114°13.786'E
9	22°17.053'N	114°13.646'E
10	22°17.080'N	114°13.619'E
11	22°17.099'N	114°13.639'E
12	22°17.008'N	114°13.822'E
13	22°17.003'N	114°13.757'E
14	22°17.005'N	114°13.582'E
15	22°17.037'N	114°13.549'E
16	22°17.037'N	114°13.786'E
17	22°17.029'N	114°13.809'E
18	22°17.005'N	114°13.877'E
19	22°17.024'N	114°13.869'E
20	22°17.044'N	114°13.965'E
21	22°17.074'N	114°13.991'E
22	22°17.034'N	114°13.516'E
A	22°17.092'N	114°13.561'E
B	22°17.087'N	114°13.574'E
C	22°17.147'N	114°13.641'E
D	22°17.170'N	114°13.673'E
E	22°17.057'N	114°14.017'E
F	22°17.055'N	114°14.024'E

Director of Marine

Date: 31.01.2023

比例 Scale 1:5000

