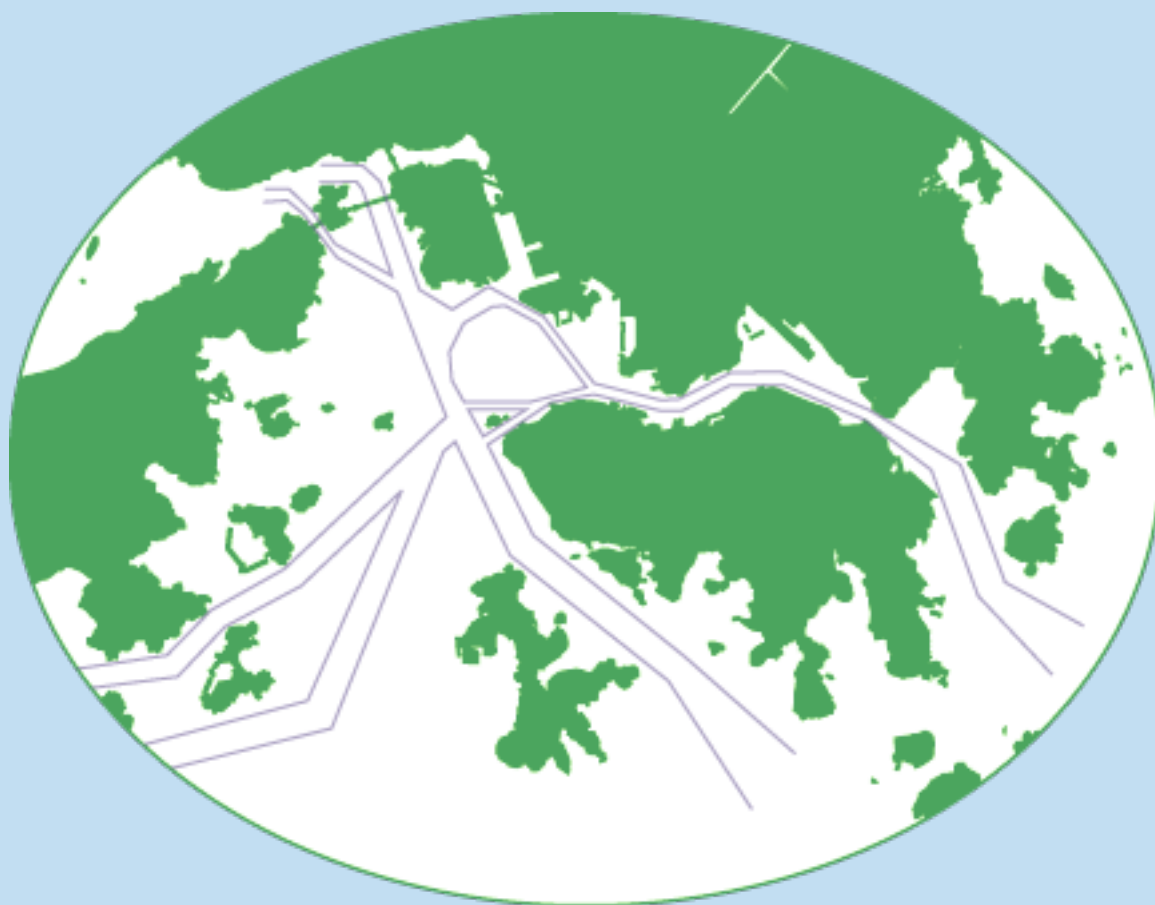


香港港口統計年報

2010

Port of Hong Kong  
Statistical Tables



中華人民共和國香港特別行政區海事處  
Marine Department  
Hong Kong Special Administrative Region  
People's Republic of China

香 港 港 口  
PORT OF HONG KONG  
統 計 年 報  
STATISTICAL TABLES  
2010

有關本刊物的查詢，請聯絡：

海事處 策劃、發展協調及港口保安部 統計組

地址：中國香港中環統一碼頭道 38 號海港政府大樓 23 樓 2307 室

電話：(852) 2852 3660 圖文傳真：(852) 2542 4638

電子郵遞：st-sec@mardep.gov.hk

Enquiries about this publication can be directed to:

**Statistics Section**

**Planning, Development & Port Security Branch**

**Marine Department**

Address: Room 2307, 23/F, Harbour Building,

38 Pier Road, Central, Hong Kong, China.

Tel. No.: (852) 2852 3660 Fax. No.: (852) 2542 4638

E-mail: st-sec@mardep.gov.hk

政府海事處網頁

Home Page of the Marine Department

<http://www.mardep.gov.hk/>

同心協力，促進卓越海事服務

**We are One in Promoting Excellence in Marine Services**

## 目錄 CONTENTS

如欲進入統計表／附錄，請按下有關的藍色項目

To view the statistical tables/appendices, please click  
the item in blue

	頁數 Page No.
註釋 EXPLANATORY NOTES	iv - vii
摘要 SUMMARY	viii
2005 至 2010 年 主要港口統計數字及每年增長率 Principal Port Statistics for 2005 - 2010 and Annual Growth Rates	
第一部 - 港口活動 PART I - Port Activities	
<i>抵港/離港的船次</i> <i>Vessel Arrivals/Departures</i>	
表 1 . 2010 年 按主要停泊地點分析抵港遠洋輪船的船次 TABLE 1 . Ocean Vessel Arrivals by Main Berthing Location, 2010	1
表 2 . 2010 年 按主要停泊地點分析離港遠洋輪船的船次 TABLE 2 . Ocean Vessel Departures by Main Berthing Location, 2010	1
表 3 . 2010 年 按船舶類型分析抵港船舶的船次 TABLE 3 . Vessel Arrivals by Ship Type, 2010	2
表 4 . 2010 年 按船旗分析抵港船舶的船次 TABLE 4 . Vessel Arrivals by Flag, 2010	3 - 4
表 5 . 2010 年 按船旗分析曾停靠香港的船舶數目和淨註冊噸位 TABLE 5 . Number and NRT of Vessels Calling Hong Kong by Flag, 2010	5 - 6
表 6 . 2010 年 按船舶類型分析離港船舶的平均在港停留時間 TABLE 6 . Average Time in Port for Vessels Departing Hong Kong by Ship Type, 2010	7
表 7 . 2010 年在貨櫃碼頭處理貨櫃的遠洋輪船統計資料 TABLE 7 . Statistics on Ocean Vessels with Containers Handled in Container Terminals, 2010	8
表 8 . 2010 年 按夏季吃水分析抵港遠洋輪船的船次 TABLE 8 . Ocean Vessel Arrivals by Summer Draft, 2010	9
表 9 . 2010 年 按船舶長度分析抵港遠洋輪船的船次 TABLE 9 . Ocean Vessel Arrivals by Vessel Length, 2010	9
表 10 . 2010 年 按主要來港原因分析抵港遠洋輪船的船次 TABLE 10 . Ocean Vessel Arrivals by Main Reason of Call, 2010	10
表 11 . 2010 年 按停泊地點及有否目的地分析郵輪抵港船次 TABLE 11 . Cruise Arrivals by Berthing Location by Whether the Trip with Destination, 2010	11
表 12 . 2010 年 跨境客運碼頭的抵港及離港航次統計資料 TABLE 12 . Statistics on Vessel Arrivals and Departures at Cross-boundary Ferry Terminals, 2010	12
表 13 . 2010 年 按船舶類型分析香港過境船舶的船次 TABLE 13 . Number of Vessel Trips Transit Hong Kong by Ship Type, 2010	13

客運量

*Passenger Throughput*

表 14 . 2010 年 按跨境客運碼頭分析客運量	14
TABLE 14 . Passenger Throughput by Cross-boundary Ferry Terminals, 2010	14
表 15 . 2010 年 按航線分析抵港及離港乘客人次	15 - 16
TABLE 15 . Passenger Arrivals and Departures by Route, 2010	15 - 16

貨櫃/貨物吞吐量

*Container/Cargo Throughput*

表 16 . 2010 年 按主要貨物裝卸地點分析貨櫃吞吐量	17
TABLE 16 . Container Throughput by Main Cargo Handling Location, 2010	17
表 17 . 2010 年 按貨櫃碼頭以外的主要貨物裝卸地點分析裝卸的貨櫃	18
TABLE 17 . Containers Discharged/Loaded at Main Cargo Handling Locations Other than Container Terminals, 2010	18
表 18 . 2010 年 按貨物種類及運輸方式劃分的裝卸港口貨物	19
TABLE 18 . Port Cargo Discharged/Loaded by Cargo Type and Mode of Transport, 2010	19

第二部 - 港口服務及管理  
PART II - Port Services and Control

表 19 . 海港繫泊浮泡統計資料	20
TABLE 19 . Harbour Mooring Buoys Statistics	20
表 20 . 2010 年 按分佈地點分析香港私用繫泡數目	21 - 22
TABLE 20 . Number of Private Moorings Laid in Hong Kong by Location, 2010	21 - 22
表 21 . 碇泊處一覽	23 - 24
TABLE 21 . List of Anchorages	23 - 24
表 22 . 避風塘一覽	25
TABLE 22 . List of Typhoon Shelters	25
表 23 . 公眾貨物裝卸區一覽	26
TABLE 23 . List of Public Cargo Working Areas	26
表 24 . 垃圾收集、油污和檢控個案統計資料	27
TABLE 24 . Refuse Collection, Oil Pollution and Prosecution Statistics	27
表 25 . 2010 年底 按噸位等級分析香港持牌船舶	28 - 29
TABLE 25 . Hong Kong Licensed Vessels by Tonnage Classification, as at year end 2010	28 - 29

	頁數 Page No.
第三部 - 船舶服務 PART III - Shipping Services	
表 26. 船舶安全監督統計資料 TABLE 26. Ship Safety Statistics	30 - 32
表 27. 本地船隻安全統計資料 TABLE 27. Local Vessels Safety Statistics	33 - 38
表 28. 海員發證、註冊和僱用統計資料 TABLE 28. Seafarers' Certification, Registration and Employment Statistics	39 - 44
表 29. 香港註冊船舶統計資料 TABLE 29. Statistics on Ships Registered in Hong Kong	45 - 46
表 30. 政府船隊統計資料 TABLE 30. Government Fleet Statistics	47
表 31. 政府船舶所屬部門及可用率情況 (2010 年 12 月 31 日) TABLE 31. Departmental Ownership and Availabilities of Government Vessels (as at 31 December 2010)	48
第四部 - 附錄 PART IV - Appendices	
A. 海事處組織架構圖 Marine Department Organization Chart	A1
B. 海事處的編制和實際員額 (截至 2010 年 12 月 31 日) Marine Department Establishment and Strength (as at 31 December 2010)	A2 - A5
C. 2010 年 海事處訓練組舉辦的課程 Training Courses Conducted by Training Section, Marine Department in 2010	A6 - A7
D. 2010 年 海事處訪客 Visitors of the Marine Department, 2010	A8 - A11
E. 2010 年 新訂海事法例 New Maritime Legislation, 2010	A12
F. 2010 年 輔航設備 Aids to Navigation, 2010	A13 - A19

### 1. 簡介

《香港港口統計年報》是香港海事處編制的港口及海事統計資料一覽表。

這本年報輯錄以下統計數字和資料：-

- 抵港/離港的船次
- 客運量
- 貨櫃/貨物吞吐量
- 港口服務及管理
- 船舶服務
- 海事處組織架構圖  
(編制和實際員額)
- 海事處舉辦的課程
- 海事處訪客
- 新訂海事法例
- 輔航設備

### 2. 資料來源

#### *船舶進出口統計*

船舶進出口統計資料乃根據船公司或代理人向海事處申報船舶抵達/離開港口的資料時所遞交的申報表(MO 618 及 MO 618A)編製而成。(摘要、表一至十)

#### *貨櫃統計資料*

在貨櫃碼頭裝運的貨櫃統計資料，主要由碼頭經營者提供。不在貨櫃碼頭裝運的遠洋輪船「空」貨櫃統計資料，由海事處根據申報表 MO 618 及 MO 618A 編製。所有其他詳細的貨櫃統計資料，皆由政府統計處根據貨物艙單抽樣編製而成。(摘要、表十六至十七)

#### *停泊/貨物裝卸地點*

有關遠洋輪船的主要貨物裝卸區和主要停泊地點的資料，均取自海事處船舶交通管理系統所保存的船舶活動報告。(表一至二、表七、表十六至十七)

### 1. Introduction

The *Port of Hong Kong Statistical Tables* is a collection of Hong Kong Port and Maritime Statistics compiled by the Marine Department.

The publication brings together the following statistics and information: -

- Vessels Arrivals/Departures
- Passenger Throughput
- Container/Cargo Throughput
- Port Services and Control
- Shipping Services
- Marine Department Organization Chart  
(Establishment and Strength)
- Training Courses Conducted by Marine Department
- Visitors to Marine Department
- New Maritime Legislation
- Aids to Navigation

### 2. Data Sources

#### *Vessel Statistics*

Vessel statistics are based on the declaration forms (MO 618 & MO 618A) submitted to Marine Department by shipping companies/agents for declaring arrivals/departures of vessels under their charge. (**Summary Table, Tables 1 – 10**)

#### *Container Statistics*

Statistics on container throughput handled at Container Terminals are mainly obtained from the terminal operators. Statistics on empty containers (ocean) handled at locations other than Container Terminals are compiled by Marine Department based on the declaration forms of MO 618 and MO 618A. As for all the other detailed container throughput statistics, they are compiled by Census and Statistics Department based on sampling of data in cargo manifests. (**Summary Table, Tables 16 – 17**)

#### *Berthing/Cargo Handling Location*

Information on the main cargo handling location and main berthing location in respect of ocean vessels are extracted from the trip activity report kept in the Marine Department's Vessel Traffic Management System. (**Tables 1 – 2, 7, 16 – 17**)

### 3. 用語及分類

#### 容量

在本報告中，船舶的容量是以淨註冊噸位(計算單位為淨註冊噸)來表示。淨註冊噸位是由一艘船的船殼內的容量(以立方呎計)，加上在甲板上用以裝載貨物、貯藏品及乘客的空間，再減去船長、高級船員、船員所住的地方、燃料、導航及推進器所佔用的地方。每一淨註冊噸相等於一百立方呎的容量。

#### 貨物裝卸地點

在本報告中，貨物裝卸地點的分類是「貨櫃碼頭」、「泊位和倉庫碼頭(包括公眾貨物裝卸區)」、「碇泊處」和「浮泡」。

#### 貨櫃吞吐量

這是指以標準貨櫃單位計算的貨櫃搬運數目。一個標準貨櫃單位等同一個二十呎貨櫃的容量。

#### 船旗

這是指船舶的國籍，表明其正式註冊的地方。香港在一九九二年正式開始船舶註冊制度。一九九七年七月一日起，香港特別行政區經中央人民政府授權繼續進行船舶註冊，並根據香港特別行政區的法律以「中國香港」的名義頒發有關證件。

#### 內河航限

內河航限是指香港鄰近水域，一般指香港與珠江、大鵬灣及澳門，及其他在廣東和廣西與香港鄰近水域相連的內陸水域。內河航限的精確定義是指以下範圍內的水域：

- 東至東經 114°30'；
- 南至北緯 22°09'；及
- 西至東經 113°31'。

#### 船舶類型

這是指船舶的特定用途，分為十八類：運車船、化學品運載船、普通貨船、散裝乾貨船、漁船/魚類加工船、全槽格式貨櫃船、液化氣體運載船、駁船/躉船/貨艇、礦沙/散貨/油類混用船、油輪、郵船/渡輪、遊樂船舶、滾裝卸式船、半貨櫃船、拖船、其他貨船、其他液體運載船及其他。

### 3. Terms and Classifications

#### Capacity

In this report, the capacity of a vessel is expressed in terms of net registered tonnage (the unit of measurement is net registered ton, NRT). Net registered tonnage (NRT) is, broadly, the capacity of a ship in cubic feet of the space within the hull, and of the enclosed space above the deck available for cargo, stores and passengers but excluding space used for the accommodation of the master, officers, crew, fuel, navigation and propelling machinery. One net registered ton is equivalent to 100 cubic feet of capacity.

#### Cargo Handling Location

The types of cargo handling location shown in this report are “container terminals”, “berths and wharves (including public cargo working areas)”, “anchorage” and “buoys”.

#### Container Throughput

This refers to the number of movement of cargo containers in TEU terms. A TEU stands for a twenty-foot equivalent unit.

#### Flag

This is the nationality of the vessel, indicating where she is officially registered. In Hong Kong, the official vessel registration system was set up in 1992. As from 1.7.1997, the Hong Kong Special Administrative Region is authorized by the Central People's Government to continue to maintain a shipping register and issue related certificates under its legislation, using the name 'Hong Kong, China'.

#### River Trade Limits

River trade limits mean the waters in the vicinity of Hong Kong, which broadly include the Pearl River, Mirs Bay and Macao, and other inland waters in Guangdong and Guangxi which are accessible from waters in the vicinity of Hong Kong. The precise definition of River Trade Limits refer to waters within the following boundaries:

- to the East, meridian 114°30' East;
- to the South, parallel 22°09' North; and
- to the West, meridian 113°31' East.

#### Ship Type

This refers to the known specific function of the ship. Eighteen types of ship are distinguished: car carrier, chemical carrier/tanker, conventional cargo vessel, dry bulk carrier, fishing/fish processing vessel, fully cellular container vessel, gas carrier/tanker, lighter/barge/cargo junk, ore/bulk/oil carrier, oil tanker, cruise/ferry, pleasure vessel, roll on/roll off, semi-container vessel, tug, other cargo vessel, other fluid carrier and others

## 4. 資料定義

### 內河船隻

根據《船舶及港口管制條例》(第 313 章)所訂，內河船隻是指進出香港與內河航限內的港口之間的船舶。(摘要、表三至六)

### 停泊地點

船舶在進入香港水域後可能停泊超過一個停泊地點。若船舶來港的主要原因是裝卸貨物，則主要的貨物裝卸地點和主要的停泊地點是指最為昂貴的地點，當中以貨櫃碼頭居首位，隨後是泊位和倉庫碼頭(包括公眾貨物裝卸區)、碇泊處和浮泡。若船舶來港的主要原因不是裝卸貨物，主要停泊地點為停留時間最長的地點。(表一至二、表七、表十六和十七)

### 內河客船

內河客船的抵港次數是指船舶停泊於港澳客運碼頭、中國客運碼頭、屯門客運碼頭和海天客運碼頭的次數。(摘要、表三至五)

停泊於這四個碼頭的船次與實際的抵港船次會有輕微偏差，因為船舶可能在同一次航程中停泊超過一個客運碼頭。

## 5. 資料限制

遠洋客船數字包括在內河航限以外水域行駛的遊樂船舶。但是，由於有些船主/代理人沒有申報這些船舶的淨註冊噸位資料給海事處，故遠洋客船的淨註冊噸位數字可能輕微低於實際的數字。(摘要、表一至五)

由於不能準確地統計本地持牌遊樂船舶和漁船來往香港及內河航限內的船次，故這兩類船舶沒有包括在內河船隻統計範圍內。(摘要、表三至六)

## 6. 計量單位

DWT = 載重(噸)  
GRT = 總註冊噸位  
LOA = 船總長度  
NRT = 淨註冊噸位  
TEU = 二十呎標準貨櫃單位

## 4. Data Definitions

### River Vessels

In accordance with the Shipping and Port Control Ordinance, Cap. 313, Laws of Hong Kong, river vessels refer to those travelling between Hong Kong and ports that are within the river trade limits. (Summary Table, Tables 3 – 6)

### Berthing Locations

A vessel may berth at more than one location after entering into Hong Kong waters. If the main reason of call of the vessel is for loading/discharging cargo, both the main cargo handling location and the main berthing location refer to the most costly location, with Container Terminals ranked first, followed by Berths and Wharves (including Public Cargo Working Areas), Anchorages and Buoys. If the main reason of call is not for loading/discharging cargo, the main berthing location refers to the one with the longest stay. (Tables 1 – 2, 7, 16 and 17)

### River Passenger Vessels

The figures on arrivals of river passenger vessels refer to the number of berthings at the Macau Ferry Terminal, the China Ferry Terminal, the Tuen Mun Ferry Terminal and the SkyPier. (Summary Table, Tables 3 – 5)

The number of berthings at these 4 terminals are slightly different from the actual number of arrivals because a ship may berth at more than one terminal in a single trip.

## 5. Data Limitations

The number of ocean passenger vessels includes pleasure vessels plying beyond the river trade limits. However, as some of their owners/agents do not report NRT information to Marine Department, the total NRT for ocean passenger vessels may be slightly under-reported. (Summary Table, Tables 1 – 5)

As accurate number of trips of locally licensed pleasure vessels and fishing vessels plying between Hong Kong and the river trade limits is not available, these two categories of vessels are not included in the river vessel statistics. (Summary Table, Tables 3 – 6)

## 6. Units of Measurement

DWT = Deadweight [Tonnage]  
GRT = Gross Registered Tonnage  
LOA = Length Overall  
NRT = Net Registered Tonnage  
TEU = Twenty-foot Equivalent Unit

## 7. 數字的捨入

客運統計數字、淨註冊噸位、貨物和貨櫃吞吐量是計算至最接近的千位。

項目	單位
客運數目	千位
貨物吞吐量	千公噸
貨櫃吞吐量	千個標準貨櫃單位
淨註冊噸位	千噸

由於進位關係，本報告中所列的個別數字之和可能不等於其總數。但變動百分率和比重百分率則以未經進位的數字計出。

## 8. 代號

- ( ) 與去年同期比較的變動百分率
- ※ 多於 1000%
- 0 少於 0.05%
- † 少於 500 個標準貨櫃單位；  
少於 500 人次；  
少於 500 公噸
- # 臨時數字
- \* 修訂數字
- { } 年底時的估計數字
- N.A. 沒有數字
- 不適用

## 7. Rounding of Figures

Statistics on passenger statistics, net register tonnage, cargo and container throughput are rounded to the nearest thousand.

Items	Units
Passenger Statistics	thousand units
Cargo Throughput	'000 tonnes
Container Throughput	'000 TEUs
NRT	'000 tons

Figures shown in this report may not add up to the respective totals due to rounding. However, percentage changes and percentage shares are calculated from unrounded figures.

## 8. Symbols

- ( ) % changes over the same period of preceding year
- ※ More than 1000%
- 0 Less than 0.05%
- † Less than 500 TEUs;  
Less than 500 passengers;  
Less than 500 tonnes
- # Provisional figures
- \* Revised figures
- { } Estimates as at year end
- N.A. Not available
- Not applicable

策劃、發展協調及港口保安部  
統計組

二零一一年四月

Statistics Section  
Planning, Development & Port Security Branch

April 2011

摘要  
SUMMARY

2005 至 2010 年主要港口統計數字及每年增長率  
Principal Port Statistics for 2005 – 2010 and Annual Growth Rates

項目 Item	2005	2009	2010	每年增長率 Annual Growth Rates	
				2009-2010	2005-2010 <sup>(1)</sup>
<b>1. 抵港船次 Number of Vessel Arrivals</b>	<b>231 812</b>	<b>205 505</b>	<b>211 813</b>	<b>+3.1%</b>	<b>-1.8%</b>
(a) 遠洋輪船 Ocean Vessel	39 135	33 157	32 645	-1.5%	-3.6%
貨船 Cargo Vessel	35 691	30 681	30 340	-1.1%	-3.2%
客船 Passenger Vessel	3 444	2 476	2 305	-6.9%	-7.7%
(b) 內河船隻 River Vessel	192 677	172 348	179 168	+4.0%	-1.4%
貨船 Cargo Vessel	117 490	89 750	91 039	+1.4%	-5.0%
客船 <sup>(2)</sup> Passenger Vessel <sup>(2)</sup>	75 187	82 598	88 129	+6.7%	+3.2%
<b>2. 抵港船舶的淨註冊噸位 (千噸) N.R.T. of Vessel Arrivals ('000 tons)</b>	<b>424 703</b>	<b>475 074</b>	<b>510 880</b>	<b>+7.5%</b>	<b>+3.8%</b>
(a) 遠洋輪船 Ocean Vessel	323 863	377 791	401 831	+6.4%	+4.4%
(b) 內河船隻 <sup>(2)</sup> River Vessel <sup>(2)</sup>	100 840	97 284	109 049	+12.1%	+1.6%
<b>3. 貨櫃吞吐量 (千個標準貨櫃單位) Container Throughput ('000 TEUs)</b>	<b>22 602</b>	<b>21 040</b>	<b>23 699</b>	<b>+12.6%</b>	<b>+1.0%</b>
(i) 按停泊地點分析 By Berthing Location					
貨櫃碼頭 Container Terminals	14 284	15 159	17 098	+12.8%	+3.7%
貨櫃碼頭以外 Other than Container Terminals	8 318	5 881	6 602	+12.3%	-4.5%
(ii) 按運輸方式分析 By Mode of Transport					
遠洋 Ocean	15 507	14 085	16 248	+15.4%	+0.9%
內河 River	7 095	6 955	7 451	+7.1%	+1.0%
<b>4. 貨物吞吐量 (千公噸) Cargo Throughput ('000 tonnes)</b>	<b>230 139</b>	<b>242 967</b>	<b>267 815</b>	<b>+10.2%</b>	<b>+3.1%</b>
(a) 海運 Seaborne	161 467	161 591	182 004	+12.6%	+2.4%
(b) 河運 River	68 672	81 376	85 811	+5.5%	+4.6%
<b>5. 港澳客運碼頭、中國客運碼頭及屯門客運碼頭客運量 (千位) Total Passenger Throughput at MFT, CFT and TMFT ('000)</b>	<b>19 520</b>	<b>22 247</b>	<b>24 508</b>	<b>+10.2%</b>	<b>+4.7%</b>
(a) 澳門 <sup>(3)</sup> Macau <sup>(3)</sup>	12 743	17 607	19 752	+12.2%	+9.2%
(b) 中國內地 Mainland China	6 568	4 366	4 539	+4.0%	-7.1%
(c) 其他 Others	208	273	217	-20.7%	+0.8%

備註： 由於進位關係，本摘要中所列的個別數字之和可能不等於其總數。

Remark: Figures shown in this summary may not add up to the respective totals due to rounding.

註釋： (1) 複合平均增長率

(2) 由二零零七年開始，數字不包括非載客的跨境渡輪船次。

(3) 數字包括乘搭直升機來往澳門乘客。

Notes: (1) Average annual compound growth rate

(2) As from 2007, non-passenger carrying trips of cross-boundary ferry are excluded.

(3) The helicopter passengers to and from Macau are included.

統計表  
Statistical  
Tables

表 1  
TABLE 1

2010 年按主要停泊地點分析抵港遠洋輪船的船次  
Ocean Vessel Arrivals by Main Berthing Location, 2010

主要停泊地點 Main Berthing Location	主要船舶類別 Main Vessel Category								總計 Total			
	貨船 Cargo Vessels				客船 Passenger Vessels							
	抵港船次 No. of Vessel Arrivals		淨註冊噸位 (千噸) NRT ('000)		抵港船次 No. of Vessel Arrivals		淨註冊噸位 (千噸) NRT ('000)		抵港船次 No. of Vessel Arrivals		淨註冊噸位 (千噸) NRT ('000)	
	(%)		(%)		(%)		(%)		(%)		(%)	
貨櫃碼頭 Container Terminals	12 723	(+4.9)	283 523	(+10.2)	12	(+500.0)	628	(+322.2)	12 735	(+4.9)	284 151	(+10.3)
泊位和倉庫碼頭 Berths and Wharves	2 172	(-45.8)	10 925	(-13.1)	1 080	(-5.8)	14 181	(-11.3)	3 252	(-36.9)	25 107	(-12.1)
碇泊處 Anchorages	15 292	(+6.7)	85 209	(+3.6)	173	(-1.1)	165	(-87.2)	15 465	(+6.6)	85 374	(+2.2)
浮泡 Buoys	153	(-25.4)	493	(-31.9)	1 040	(-9.8)	6 707	(-10.0)	1 193	(-12.2)	7 199	(-11.9)
<b>總計 Total</b>	<b>30 340</b>	<b>(-1.1)</b>	<b>380 150</b>	<b>(+7.7)</b>	<b>2 305</b>	<b>(-6.9)</b>	<b>21 681</b>	<b>(-12.9)</b>	<b>32 645</b>	<b>(-1.5)</b>	<b>401 831</b>	<b>(+6.4)</b>

表 2  
TABLE 2

2010 年按主要停泊地點分析離港遠洋輪船的船次  
Ocean Vessel Departures by Main Berthing Location, 2010

主要停泊地點 Main Berthing Location	主要船舶類別 Main Vessel Category								總計 Total			
	貨船 Cargo Vessels				客船 Passenger Vessels							
	離港船次 No. of Vessel Departures		淨註冊噸位 (千噸) NRT ('000)		離港船次 No. of Vessel Departures		淨註冊噸位 (千噸) NRT ('000)		離港船次 No. of Vessel Departures		淨註冊噸位 (千噸) NRT ('000)	
	(%)		(%)		(%)		(%)		(%)		(%)	
貨櫃碼頭 Container Terminals	12 887	(+5.6)	286 761	(+9.7)	12	(+500.0)	628	(+322.2)	12 899	(+5.7)	287 390	(+9.9)
泊位和倉庫碼頭 Berths and Wharves	2 197	(-48.3)	10 461	(-12.1)	1 076	(-6.4)	14 209	(-11.5)	3 273	(-39.4)	24 670	(-11.8)
碇泊處 Anchorages	15 357	(+8.2)	83 091	(+7.5)	270	(+28.6)	167	(-87.1)	15 627	(+8.5)	83 258	(+6.0)
浮泡 Buoys	115	(-32.0)	385	(-38.2)	1 040	(-9.7)	6 704	(-9.9)	1 155	(-12.6)	7 089	(-12.1)
<b>總計 Total</b>	<b>30 556</b>	<b>(-0.9)</b>	<b>380 699</b>	<b>(+8.4)</b>	<b>2 398</b>	<b>(-4.6)</b>	<b>21 708</b>	<b>(-12.9)</b>	<b>32 954</b>	<b>(-1.1)</b>	<b>402 407</b>	<b>(+7.0)</b>

表3  
TABLE 3

2010年按船舶類型分析抵港船舶的船次  
Vessel Arrivals by Ship Type, 2010

船舶類型 Ship Type	遠洋輪船 Ocean Vessels		內河船隻 River Vessels		總計 Total	
	抵港船次 No. of Vessel Arrivals	比重 百分率 Percentage Share	抵港船次 No. of Vessel Arrivals	比重 百分率 Percentage Share	抵港船次 No. of Vessel Arrivals	比重 百分率 Percentage Share
	(%)		(%)		(%)	
運車船 Car Carrier	95 (+280.0)	0.3%	2 (-50.0)	0%	97 (+234.5)	0%
化學品運載船 Chemical Carrier/Tanker	396 (-5.7)	1.2%	317 (+39.6)	0.2%	713 (+10.2)	0.3%
普通貨船 Conventional Cargo Vessel	3 880 (-34.8)	11.9%	11 144 (-11.2)	6.2%	15 024 (-18.8)	7.1%
其他貨船 Other Cargo Vessel	0 (0)	0%	125 (-30.2)	0.1%	125 (-30.2)	0.1%
郵船/渡輪 Cruise/Ferry	2 134 (-9.0)	6.5%	88 129 (+6.7)	49.2%	90 263 (+6.3)	42.6%
散裝乾貨船 Dry Bulk Carrier	1 357 (+11.0)	4.2%	2 769 (+37.3)	1.5%	4 126 (+27.4)	1.9%
漁船/魚類加工船 Fishing/Fish Processing Vessel	267 (-19.3)	0.8%	-	-	267 (-19.3)	0.1%
全槽格式貨櫃船 Fully Cellular Container Vessel	21 717 (+8.3)	66.5%	63 093 (+4.6)	35.2%	84 810 (+5.5)	40.0%
液化氣體運載船 Gas Carrier/Tanker	366 (-3.9)	1.1%	78 (+178.6)	0%	444 (+8.6)	0.2%
駁船/躉船/貨艇 Lighter/Barge/Cargo Junk	79 (+54.9)	0.2%	6 463 (-5.3)	3.6%	6 542 (-4.9)	3.1%
礦沙散貨油類混用船 OBO (Ore, Bulk, Oil) Carrier	12 (+100.0)	0%	4 (-)	0%	16 (+166.7)	0%
油輪 Oil Tanker	1 170 (-12.9)	3.6%	724 (-28.9)	0.4%	1 894 (-19.8)	0.9%
其他液體運載船 Other Fluid Carrier	0 (0)	0%	0 (-100.0)	0%	0 (-100.0)	0%
遊樂船舶 Pleasure Vessel	171 (+30.5)	0.5%	-	-	171 (+30.5)	0.1%
滾裝卸式船 Roll On/Roll Off	411 (+9.0)	1.3%	28 (+7.7)	0%	439 (+8.9)	0.2%
半貨櫃船 Semi-container Vessel	276 (+51.6)	0.8%	2 004 (+10.4)	1.1%	2 280 (+14.1)	1.1%
拖船 Tug	170 (+11.1)	0.5%	4 160 (-10.1)	2.3%	4 330 (-9.4)	2.0%
其他 Others	144 (-18.6)	0.4%	128 (+33.3)	0.1%	272 (-0.4)	0.1%
<b>總計 Total</b>	<b>32 645 (-1.5)</b>	<b>100.0%</b>	<b>179 168 (+4.0)</b>	<b>100.0%</b>	<b>211 813 (+3.1)</b>	<b>100.0%</b>

表 4  
TABLE 4

2010 年按船旗分析抵港船舶的船次  
Vessel Arrivals by Flag, 2010

船旗 Flag	遠洋輪船 Ocean Vessels				內河船隻 River Vessels				總計 Total			
	抵港船次 No. of Vessel Arrivals		淨註冊噸位 (千噸位) NRT ('000)		抵港船次 No. of Vessel Arrivals		淨註冊噸位 (千噸位) NRT ('000)		抵港船次 No. of Vessel Arrivals		淨註冊噸位 (千噸位) NRT ('000)	
	(%)	(%)	(%)	(%)	(%)	(%)	(%)	(%)	(%)	(%)	(%)	
安提瓜和巴布達 Antigua and Barbuda	1 072	(+49.7)	10 640	(+25.2)	80	(+81.8)	967	(+130.5)	1 152	(+51.6)	11 607	(+30.2)
巴哈馬 Bahamas	1 035	(-10.0)	18 898	(-7.2)	25	(+8.7)	608	(+55.1)	1 060	(-9.6)	19 507	(-6.0)
伯利茲 Belize	106	(+32.5)	185	(+33.4)	9	(-50.0)	15	(-48.6)	115	(+17.3)	201	(+19.0)
柬埔寨 Cambodia	241	(+26.2)	471	(+25.2)	30	(-11.8)	53	(-23.4)	271	(+20.4)	524	(+17.6)
中國內地 Mainland China	7 037	(+14.3)	12 454	(+3.2)	108 045	(+2.1)	56 017	(+9.2)	115 082	(+2.7)	68 471	(+8.0)
賽浦路斯 Cyprus	656	(+3.0)	8 858	(+5.6)	104	(+11.8)	1 062	(+16.4)	760	(+4.1)	9 920	(+6.6)
丹麥 Denmark	335	(+8.4)	16 656	(+9.1)	18	(+80.0)	515	(+82.7)	353	(+10.7)	17 171	(+10.4)
法國 France	83	(-11.7)	3 893	(+0.5)	8	(+60.0)	323	(+72.1)	91	(-8.1)	4 216	(+3.8)
德國 Germany	800	(-7.4)	24 454	(-2.0)	76	(+49.0)	2 026	(+51.2)	876	(-4.3)	26 481	(+0.7)
希臘 Greece	179	(-5.8)	6 674	(+2.4)	19	(-5.0)	618	(-14.0)	198	(-5.7)	7 292	(+0.8)
香港 Hong Kong	2 860	(+19.9)	42 013	(+26.3)	68 760	(+6.4)	23 642	(+1.3)	71 620	(+6.9)	65 656	(+16.0)
意大利 Italy	178	(+5.3)	4 438	(+10.3)	13	(+225.0)	308	(+161.2)	191	(+10.4)	4 747	(+14.6)
基里巴斯共和國 Republic of Kiribati	388	(+16.5)	3 670	(+31.8)	16	(-20.0)	117	(+187.8)	404	(+14.4)	3 787	(+34.1)
南韓 Republic of Korea	614	(-16.7)	3 532	(-27.6)	100	(-6.5)	337	(-25.6)	714	(-15.4)	3 869	(-27.4)
利比里亞 Liberia	3 494	(+17.1)	69 602	(+24.4)	346	(+91.2)	6 781	(+120.8)	3 840	(+21.4)	76 383	(+29.4)
馬來西亞 Malaysia	87	(-18.7)	980	(-39.3)	19	(+137.5)	250	(+70.4)	106	(-7.8)	1 230	(-30.1)

表 4 – 續  
TABLE 4 – Cont'd

船旗 Flag	遠洋輪船 Ocean Vessels		內河船隻 River Vessels		總計 Total	
	抵港船次 No. of Vessel Arrivals	淨註冊噸位 (千噸位) NRT ('000)	抵港船次 No. of Vessel Arrivals	淨註冊噸位 (千噸位) NRT ('000)	抵港船次 No. of Vessel Arrivals	淨註冊噸位 (千噸位) NRT ('000)
	(%)	(%)	(%)	(%)	(%)	(%)
馬耳他 Malta	233 (+20.7)	5 353 (+42.6)	33 (+32.0)	686 (+55.7)	266 (+22.0)	6 039 (-43.9)
荷蘭 Netherlands	78 (-35.5)	1 469 (+0.5)	13 (+550.0)	210 (※)	91 (-26.0)	1 678 (+14.5)
巴拿馬 Panama	7 113 (-4.5)	94 899 (-4.3)	722 (-5.2)	8 746 (-5.3)	7 835 (-4.6)	103 645 (-4.4)
塞拉利昂 Sierra Leone	102 (+436.8)	89 (+678.8)	14 (+55.6)	41 (+121.2)	116 (+314.3)	130 (+332.9)
新加坡 Singapore	2 380 (+3.9)	32 144 (+9.8)	308 (+78.0)	2 969 (+56.8)	2 688 (+9.1)	35 113 (+12.6)
聖文森特和 格林納丁斯 St. Vincent and the Grenadines	82 (-31.7)	674 (-19.9)	15 (0)	83 (+3.8)	97 (-28.1)	757 (-17.9)
台灣 Taiwan	1 161 (-67.1)	2 829 (+5.7)	9 (+28.6)	97 (+23.9)	1 170 (-66.9)	2 926 (+6.2)
泰國 Thailand	166 (+23.9)	746 (-3.0)	8 (-20.0)	14 (-48.3)	174 (+20.8)	760 (-4.6)
英國 United Kingdom	663 (-12.0)	19 236 (-7.5)	36 (-23.4)	872 (-32.3)	699 (-12.6)	20 108 (-8.9)
馬紹爾群島 Marshall Islands	817 (+14.1)	11 066 (+36.0)	71 (+24.6)	703 (+5.3)	888 (+14.9)	11 770 (+33.7)
越南 Vietnam	295 (+30.5)	992 (+8.6)	11 (0)	52 (+47.5)	306 (+29.1)	1 045 (+10.0)
其他 <sup>(1)</sup> Others <sup>(1)</sup>	390 (-16.3)	4 915 (-13.1)	260 (+63.5)	935 (+46.7)	650 (+4.0)	5 850 (-7.1)
<b>總計 Total</b>	<b>32 645 (-1.5)</b>	<b>401 831 (+6.4)</b>	<b>179 168 (+4.0)</b>	<b>109 049 (+12.1)</b>	<b>211 813 (+3.1)</b>	<b>510 880 (+7.5)</b>

※ 多於 1000%

※ More than 1000%

註釋： (1) 包括所有在二零一零年遠洋輪船抵港船次總數少於五十船次的旗號。

Note: (1) Including those flags of which their total number of ocean vessel arrivals were less than 50 in 2010.

表 5  
TABLE 5

2010 年按船旗分析曾停靠香港的船舶數目和淨註冊噸位  
Number and NRT of Vessels Calling Hong Kong by Flag, 2010

船旗 Flag	遠洋輪船 Ocean Vessels				內河船隻 River Vessels			
	船舶數目 Number of Vessels		淨註冊噸位 (千噸) NRT ('000)		船舶數目 Number of Vessels		淨註冊噸位 (千噸) NRT ('000)	
	(%)		(%)		(%)		(%)	
安提瓜和巴布達 Antigua and Barbuda	151	(+21.8)	1 544	(+20.4)	44	(+51.7)	581	(+88.7)
巴哈馬 Bahamas	105	(-9.5)	2 306	(-6.1)	19	(+5.6)	418	(+43.7)
伯利茲 Belize	36	(+20.0)	70	(+29.2)	8	(-27.3)	14	(-22.7)
柬埔寨 Cambodia	70	(+16.7)	149	(+1.8)	21	(-12.5)	39	(-20.2)
中國內地 Mainland China	420	(+3.7)	2 938	(-10.8)	1 413	(+7.6)	2 750	(+30.5)
塞浦路斯 Cyprus	112	(-10.4)	1 924	(-3.5)	36	(+5.9)	566	(+5.4)
丹麥 Denmark	55	(-5.2)	2 358	(-7.3)	18	(+100.0)	515	(+122.7)
法國 France	22	(-12.0)	870	(-12.8)	5	(+66.7)	210	(+86.9)
德國 Germany	154	(-16.8)	4 462	(-12.4)	56	(+40.0)	1 486	(+44.4)
希臘 Greece	66	(-7.0)	2 194	(-7.7)	19	(+11.8)	618	(+6.8)
香港 Hong Kong	591	(+14.1)	8 239	(+14.8)	609	(-5.1)	3 053	(+21.3)
印尼 Indonesia	22	(+120.0)	155	(+123.9)	10	(+233.3)	85	(+452.7)
意大利 Italy	38	(+31.0)	1 053	(+43.3)	13	(+225.0)	308	(+161.2)
基里巴斯共和國 Republic of Kiribati	22	(-12.0)	114	(+57.6)	11	(-15.4)	100	(+323.6)
南韓 Republic of Korea	130	(-20.2)	594	(-52.6)	48	(-12.7)	199	(-15.2)
利比里亞 Liberia	586	(+8.9)	13 342	(+15.7)	196	(+67.5)	4 271	(+87.9)
馬來西亞 Malaysia	33	(-37.7)	404	(-37.9)	18	(+157.1)	241	(+95.2)
馬耳他 Malta	97	(+2.1)	2 368	(+27.7)	31	(+29.2)	622	(+49.9)

表 5 – 續  
TABLE 5 – Cont'd

船旗 Flag	遠洋輪船 Ocean Vessels				內河船隻 River Vessels			
	船舶數目 Number of Vessels		淨註冊噸位 (千噸) NRT ('000)		船舶數目 Number of Vessels		淨註冊噸位 (千噸) NRT ('000)	
		(%)		(%)		(%)		(%)
荷蘭 Netherlands	23	(-25.8)	282	(-43.5)	12	(+500.0)	180	(※)
挪威 Norway	25	(-16.7)	346	(-36.4)	9	(+200.0)	131	(+276.7)
巴拿馬 Panama	1 351	(-4.1)	20 624	(-0.7)	428	(+6.5)	6 114	(+0.6)
塞拉利昂 Sierra Leone	47	(+370.0)	36	(+320.3)	6	(+200.0)	15	(+387.8)
新加坡 Singapore	372	(+0.8)	5 624	(+8.3)	130	(+28.7)	1 351	(+17.5)
聖文森特和 格林納丁斯 St. Vincent and the Grenadines	43	(-8.5)	385	(+5.1)	15	(0)	83	(+3.8)
台灣 Taiwan	152	(-25.1)	301	(+119.3)	7	(+16.7)	87	(+54.1)
泰國 Thailand	33	(0)	135	(+10.0)	8	(0)	14	(-40.2)
圖瓦魯 Tuvalu	21	(+10.5)	131	(+166.6)	7	(-12.5)	21	(-44.3)
英國 United Kingdom	161	(0)	4 575	(+7.1)	29	(-19.4)	758	(-24.2)
馬紹爾群島 Marshall Islands	189	(+7.4)	2 943	(+23.6)	42	(+13.5)	470	(+14.7)
越南 Vietnam	57	(+11.8)	267	(-15.8)	11	(+37.5)	52	(+79.8)
其他 <sup>(1)</sup> Others <sup>(1)</sup>	173	(-11.7)	2 434	(+5.5)	61	(+22.0)	477	(+31.5)
<b>總計 Total</b>	<b>5 357</b>	<b>(-0.3)</b>	<b>83 164</b>	<b>(+2.4)</b>	<b>3 340</b>	<b>(+10.0)</b>	<b>25 831</b>	<b>(+27.1)</b>

※ 多於 1000%

※ More than 1000%

備註： 此表內的遠洋輪船及內河船隻數目不能直接地加在一起，因為同一艘船舶在一年內可能會被歸納於遠洋及內河船舶類別，視乎該船舶在該年度不同的抵港旅程是否超越內河航限而定。

Remark: The number of ocean vessels and river vessels in this table cannot be grouped together by simple addition as the same vessel may be classified as ocean and river vessel during a year depending whether her trips to Hong Kong in that year were beyond the river trade limit or not.

註釋： (1) 包括所有在二零一零年遠洋輪船抵港船舶總數少於二十船舶的旗號。

Note: (1) Including those flags of which their total number of ocean vessels calling Hong Kong were less than 20 in 2010.

**表 6**  
**TABLE 6**

**2010 年按船舶類型分析離港船舶的平均在港停留時間**  
**Average Time in Port for Vessels Departing Hong Kong by Ship Type, 2010**

小時  
Hours

船舶類型 Ship Type	遠洋輪船 Ocean Vessels	內河船隻 River Vessels	總計 Total
運車船 Car Carrier	8	6	7
化學品運載船 Chemical Carrier/Tanker	15	71	36
普通貨船 Conventional Cargo Vessel	34	31	32
郵船/渡輪 Cruise/Ferry	11	N.A.	N.A.
散裝乾貨船 Dry Bulk Carrier	27	35	31
漁船/魚類加工船 Fishing/Fish Processing Vessel	93	-	-
全槽格式貨櫃船 Fully Cellular Container Vessel	23	35	32
液化氣體運載船 Gas Carrier/Tanker	48	64	50
駁船/躉船/貨艇 Lighter/Barge/Cargo Junk	173	72	73
礦沙散貨油類混用船 OBO (Ore, Bulk, Oil) Carrier	17	-	-
油輪 Oil Tanker	34	66	45
滾裝卸式船 Roll On/Roll Off	11	12	11
半貨櫃船 Semi-container Vessel	47	45	45
拖船 Tug	146	87	90
其他 Others	136	46	84
<b>所有船舶類型 All Ship Type</b>	<b>27</b>	<b>40</b>	<b>37</b>

表 7  
TABLE 7

2010 年在貨櫃碼頭處理貨櫃的遠洋輪船統計資料  
Statistics on Ocean Vessels with Containers Handled in Container Terminals, 2010

項目 Item	抵港船次 No. of Vessel Arrivals	比重百分率 Percentage Share
在貨櫃碼頭處理貨櫃的遠洋輪船 Ocean Vessels with Containers Handled in Container Terminals	12 699 (+4.9)	100.0%
	(%)	
- 按載重噸分析 - Analysed by Deadweight (DWT)		
少於 10 000 載重噸 Under 10 000 DWT	670 (+1.8)	5.3%
10 000 - 19 999 載重噸 10 000 - 19 999 DWT	1 918 (+1.7)	15.1%
20 000 - 29 999 載重噸 20 000 - 29 999 DWT	2 237 (+6.5)	17.6%
30 000 - 39 999 載重噸 30 000 - 39 999 DWT	1 163 (-5.4)	9.2%
40 000 - 49 999 載重噸 40 000 - 49 999 DWT	874 (-7.6)	6.9%
50 000 - 99 999 載重噸 50 000 - 99 999 DWT	4 543 (+8.0)	35.8%
100 000 載重噸及以上 100 000 DWT and above	1 294 (+19.3)	10.2%
- 按主要貿易地區/國家分析 (根據所申報的上一個停靠港口) - Analysed by Principal Trading Region/Country (Based on Reported Previous Port)		
東南亞 South East Asia	4 894 (+7.9)	38.5%
中國內地 Mainland China	2 809 (+3.1)	22.1%
台灣 Taiwan	2 588 (-5.0)	20.4%
日本 Japan	695 (+23.9)	5.5%
北美洲 North America	636 (+8.0)	5.0%
西歐 Western Europe	433 (+9.6)	3.4%
中美洲、南美洲 Central and South America	196 (+20.2)	1.5%
大洋洲 Oceania	160 (+7.4)	1.3%
非洲 Africa	81 (+170.0)	0.6%
中東 Middle East	66 (0)	0.5%
獨立國家聯合體及東歐 CIS and Eastern Europe	41 (-21.2)	0.3%
其他 Others	100 (-18.0)	0.8%
使用貨櫃碼頭處理貨櫃的遠洋輪船在香港港口的平均停留時間(小時) Average Time in Hong Kong Port for Ocean Vessels with Containers Handled in Container Terminals (Hours)	14.1	

表 8  
TABLE 8

2010 年按夏季吃水分析抵港遠洋輪船的船次  
Ocean Vessel Arrivals by Summer Draft, 2010

夏季吃水 (米) Summer Draft (m)	抵港船次 No. of Vessel Arrivals	比重百分率 Percentage Share
	(%)	
少於 2.00      Under 2.00	278                      (-73.3)	0.9%
2.00 - 3.99	5 707                    (-8.2)	17.5%
4.00 - 5.99	3 985                    (+0.4)	12.2%
6.00 - 7.99	4 021                    (+6.8)	12.3%
8.00 - 9.99	5 990                    (+5.4)	18.3%
10.00 - 11.99	4 192                    (+5.8)	12.8%
12.00 - 13.99	3 449                    (+0.9)	10.6%
14.00 - 15.99	4 174                    (-4.1)	12.8%
16.00 - 17.99	485                      (+5.2)	1.5%
18.00 及以上      18.00 and above	364                      (+26.4)	1.1%
<b>總計      Total</b>	<b>32 645                    (-1.5)</b>	<b>100.0%</b>

表 9  
TABLE 9

2010 年按船舶長度分析抵港遠洋輪船的船次  
Ocean Vessel Arrivals by Vessel Length, 2010

船舶長度 (米) Length Overall (m)	抵港船次 No. of Vessel Arrivals	比重百分率 Percentage Share
	(%)	
少於 30.0      Under 30.0	353                      (-30.2)	1.1%
30.0 - 49.9	1 080                    (-65.3)	3.3%
50.0 - 99.9	8 208                    (+13.1)	25.1%
100.0 - 149.9	5 943                    (+0.4)	18.2%
150.0 - 199.9	6 953                    (+6.6)	21.3%
200.0 - 249.9	3 510                    (-1.6)	10.8%
250.0 - 299.9	4 196                    (-1.2)	12.9%
300.0 及以上      300.0 and above	2 402                    (+18.5)	7.4%
<b>總計      Total</b>	<b>32 645                    (-1.5)</b>	<b>100.0%</b>

表 10  
TABLE 10

2010 年按主要來港原因分析抵港遠洋輪船的船次  
Ocean Vessel Arrivals by Main Reason of Call, 2010

主要來港原因 Main Reason of Call	抵港船次 No. of Vessel Arrivals		比重百分率 Percentage Share
		(%)	
裝貨、卸貨 Loading and Discharging Cargo	23 085	(+6.3)	70.7%
交換文件 Switch Documents	2 137	(-13.0)	6.5%
旅遊 (郵輪) Tour (Cruise)	2 111	(-10.0)	6.5%
卸貨 Discharging Cargo	1 956	(-0.3)	6.0%
裝貨 Loading Cargo	1 184	(-53.3)	3.6%
船上用品補給 (燃料除外) Taking Stores (Except Bunkers)	990	(-17.3)	3.0%
補充燃料 Bunkers	549	(+76.0)	1.7%
消遣/ 運動 (遊艇) Pleasure/ Sports (Pleasure Vessels)	168	(+28.2)	0.5%
船員變動 (貨船) Change of Crew (Cargo Vessels)	49	(-43.0)	0.2%
例行入乾塢 Routine Dry Docking	36	(+71.4)	0.1%
緊急修理、非例行入乾塢 Emergency Repair, Non-routine Dry Docking	33	(-31.3)	0.1%
其他 Others	347	(-1.4)	1.1%
<b>總計 Total</b>	<b>32 645</b>	<b>(-1.5)</b>	<b>100.0%</b>

**表 11**  
**TABLE 11**

**2010 年按停泊地點及有否目的地分析郵輪抵港船次**  
**Cruise Arrivals by Berthing Location by Whether the Trip with Destination, 2010**

停泊地點 Berthing Location	郵輪抵港船次 <sup>(1)</sup> Number of Cruise Arrivals <sup>(1)</sup>					
	有目的地 With Destination		公海 <sup>(2)</sup> High Seas <sup>(2)</sup>		總計 Total	
	數目 Number	變動百分率 Percentage Change	數目 Number	變動百分率 Percentage Change	數目 Number	變動百分率 Percentage Change
海運大廈 Ocean Terminal	86	+38.7%	348	-28.1%	434	-20.5%
中國客運碼頭 China Ferry Terminal	9	-10.0%	603	-1.6%	612	-1.8%
浮泡和碇泊處 Buoys and Anchorages	3	-62.5%	1 038	-9.8%	1 041	-10.2%
其他 <sup>(3)</sup> Others <sup>(3)</sup>	22	+57.1%	2	-33.3%	24	+41.2%
<b>總計 Total</b>	<b>120</b>	<b>+27.7%</b>	<b>1 991</b>	<b>-11.6%</b>	<b>2 111</b>	<b>-10.0%</b>

註釋： (1) 不包括非載客的船次，例如緊急修理、補充燃料等。  
(2) 根據海商法，公海的定義是指不屬於任何國家領海或內水的海域。  
(3) 包括私人泊位和倉庫碼頭、船塢及葵青貨櫃碼頭。

Notes: (1) Excluding those trips not for passenger carrying, e.g. emergency repair, bunkers, etc.  
(2) According to Maritime Law, High Seas is defined to be the waters lying outside the territorial waters of any countries.  
(3) Including private berths and wharves, docks, and container terminals at Kwai Chung and Tsing Yi.

表 12  
TABLE 12

2010 年跨境客運碼頭的抵港及離港航次統計資料<sup>(1)(2)</sup>  
Statistics on Vessel Arrivals and Departures at Cross-boundary Ferry Terminals, 2010<sup>(1)(2)</sup>

來往 From/To	運輸工具類別 Type of Carrier	提供服務的船舶/ 直升機數目 No. of Vessels/ Helicopters in Services		抵港 Arrivals				離港 Departures			
				航次 No. of Trips		淨註冊噸位(千噸) NRT ('000)		航次 No. of Trips		淨註冊噸位(千噸) NRT ('000)	
			(%)		(%)		(%)		(%)		(%)
澳門 Macau	雙體船 Catamaran	40	(-9.1)	46 464	(+12.4)	10 336	(+17.5)	47 319	(+14.1)	10 495	(+18.9)
	噴射飛翼船 Jetfoil	11	(0)	13 346	(+4.0)	1 303	(+4.0)	13 370	(+3.5)	1 305	(+3.5)
澳門 Macau	直升機 Helicopter	6	(-45.5)	7 452	(-3.8)	-	(-)	7 452	(-3.8)	-	(-)
<b>小計 - 澳門 Sub-total - Macau</b>				<b>67 262</b>	<b>(+8.6)</b>	<b>11 639</b>	<b>(+15.8)</b>	<b>68 141</b>	<b>(+9.7)</b>	<b>11 801</b>	<b>(+17.0)</b>
高明 Gaoming	雙體船 Catamaran	1	(-50.0)	370	(-1.3)	65	(+0.1)	370	(-1.6)	65	(-0.1)
虎門 Humen	雙體船 Catamaran	6	(+50.0)	1 830	(-1.3)	286	(-1.2)	1 825	(-1.2)	286	(-1.1)
江門 Jiangmen	雙體船 Catamaran	3	(0)	803	(+6.6)	110	(+6.6)	801	(+7.4)	110	(+7.3)
蓮花山 Lianhuashan	雙體船 Catamaran	4	(-20.0)	1 826	(+13.3)	305	(+11.1)	1 802	(+12.3)	301	(+10.2)
南沙 Nansha	雙體船 Catamaran	5	(0)	2 140	(+5.6)	387	(+2.8)	2 136	(+5.6)	387	(+2.6)
蛇口 Shekou	雙體船 Catamaran	14	(0)	7 590	(-0.2)	943	(+0.9)	7 677	(+1.0)	968	(+3.7)
深圳 Shenzhen	雙體船 Catamaran	11	(-15.4)	2 231	(-7.0)	354	(-5.4)	2 231	(-2.3)	354	(-0.4)
順德 Shunde	雙體船 Catamaran	4	(-33.3)	2 195	(-0.8)	369	(-1.0)	2 204	(0)	370	(-0.3)
中山 Zhongshan	雙體船 Catamaran	5	(-16.7)	3 007	(-6.6)	512	(-6.2)	3 670	(+7.6)	625	(+8.1)
珠海 Zhuhai	雙體船 Catamaran	12	(+9.1)	6 327	(-0.5)	1 074	(-0.8)	6 343	(-0.2)	1 077	(-0.5)
<b>小計 - 內河港口 Sub-total - River Trade Ports</b>				<b>28 319</b>	<b>(-0.3)</b>	<b>4 405</b>	<b>(-0.3)</b>	<b>29 059</b>	<b>(+2.2)</b>	<b>4 541</b>	<b>(+2.6)</b>
廈門 Xiamen	大船 Conventional Ferry	1	(0)	9	(0)	32	(0)	10	(+11.1)	36	(+11.1)
公海 High Seas	大船 Conventional Ferry	1	(0)	603	(-1.3)	2 159	(-1.3)	603	(-1.3)	2 159	(-1.3)
<b>小計 - 大船 Sub-total - Conventional Ferry</b>				<b>612</b>	<b>(-1.3)</b>	<b>2 191</b>	<b>(-1.3)</b>	<b>613</b>	<b>(-1.1)</b>	<b>2 195</b>	<b>(-1.1)</b>
<b>總計 Total</b>				<b>96 193</b>	<b>(+5.7)</b>	<b>18 235</b>	<b>(+9.3)</b>	<b>97 813</b>	<b>(+7.3)</b>	<b>18 536</b>	<b>(+10.8)</b>

註釋： (1) 包括港澳客運碼頭、中國客運碼頭、屯門客運碼頭及海天客運碼頭的統計。

Notes: (1) Including Macau Ferry Terminal, China Ferry Terminal, Tuen Mun Ferry Terminal and SkyPier.

(2) 數字不包括非載客的跨境渡輪船次。

(2) Non-passenger carrying trips of cross-boundary ferry are excluded.

**表 13**  
**TABLE 13**

**2010年按船舶類型分析香港過境船舶的船次<sup>(1)</sup>**  
**Number of Vessel Trips Transit Hong Kong<sup>(1)</sup> by Ship Type, 2010**

船舶類型 Ship Type	過境船次 Vessel Trips Transit Hong Kong	變動百分率 Percentage Change	淨註冊噸位 (千噸) NRT ('000)	變動百分率 Percentage Change
全槽格式貨櫃船 Fully Cellular Container Vessel	12 625	+18.8%	358 191	+19.9%
拖船 Tug	1 020	+19.9%	604	+25.4%
普通貨船 Conventional Cargo Vessel	548	+19.7%	2 351	+14.7%
散裝乾貨船 Dry Bulk Carrier	440	-12.0%	9 720	-15.1%
油輪 Oil Tanker	233	+30.2%	2 558	+38.7%
液化氣體運載船 Gas Carrier/Tanker	160	+23.1%	4 483	+18.7%
化學品運載船 Chemical Carrier/Tanker	139	-0.7%	479	+0.8%
滾裝卸式船 Roll On/Roll Off	19	+280.0%	151	+720.4%
半貨櫃船 Semi-container Vessel	3	-66.7%	31	-34.1%
其他 Others	381	-46.2%	452	-25.1%
<b>總計 Total</b>	<b>15 568</b>	<b>+14.4%</b>	<b>379 020</b>	<b>+18.6%</b>

註釋： (1) 只包括曾提供到達前通知書的過境香港水域船舶的船次。

Note: (1) Only those vessel trips transit Hong Kong waters with Pre-arrival Notification are included.

資料來源： 海事處船隻航行監察中心

Data Source: Vessel Traffic Centre, Marine Department

表 14  
TABLE 14

2010 年按跨境客運碼頭分析客運量  
Passenger Throughput by Cross-boundary Ferry Terminals, 2010

千位 ('000)

來往 From/To	澳門 Macau	中國內地 Mainland China	公海 High Seas	總計 Total
	(%)	(%)	(%)	(%)
海事處轄下客運碼頭 <sup>(1)</sup> Marine Ferry Terminals <sup>(1)</sup>				
港澳客運碼頭 Macau Ferry Terminal	16 098 <sup>(2)</sup> (+11.3)	1 169 (+2.1)	- (-)	17 267 (+10.7)
中國客運碼頭 China Ferry Terminal	3 654 (+16.1)	3 369 (+4.6)	217 (-20.7)	7 240 (+9.0)
屯門客運碼頭 Tuen Mun Ferry Terminal	- (-)	1 (+1.0)	- (-)	1 (+1.0)
海天客運碼頭 SkyPier	881 (+39.6)	1 361 (+15.5)	- (-)	2 242 (+23.9)
<b>總計 Total</b>	<b>20 633 (+13.1)</b>	<b>5 900 (+6.4)</b>	<b>217 (-20.7)</b>	<b>26 750 (+11.2)</b>

註釋： (1) 這數字與入境事務處發布的統計數字並不相等，原因在於入境事務處的數字包括毋須付船費的乘客 [例如不足一歲者]。

(2) 數字包括乘搭直升機來往澳門乘客。

Notes: (1) The figures do not tally with those released by the Immigration Department because the figures of Immigration Department cover the passengers who are not required to pay fares (e.g. passengers less than 1 year of age).

(2) The helicopter passengers to and from Macau are included.

資料來源： 香港國際機場客運碼頭服務有限公司及海事處客運碼頭組

Data Source: Hong Kong International Airport Ferry Terminal Services Ltd and Ferry Terminals Section, Marine Department

表 15  
TABLE 15

2010 年按航線分析抵港及離港乘客人次  
Passenger Arrivals and Departures by Route, 2010

I. 海事處轄下客運碼頭<sup>(1)</sup>  
Marine Ferry Terminals<sup>(1)</sup>

來往 From/To	運輸工具類別 Type of Carrier	抵港乘客 Passenger Arrivals		離港乘客 Passenger Departures	
		乘客人次(千位數) Passengers ('000)	載客率 Passenger Load Factor	乘客人次(千位數) Passengers ('000)	載客率 Passenger Load Factor
		(%)	(%)	(%)	(%)
澳門 Macau	雙體船 Catamaran	7 245 (+15.5)	44.7% (+6.6)	8 684 (+16.8)	52.0% (+6.7)
	噴射飛翼船 Jetfoil	1 872 (-2.1)	58.4% (-5.9)	1 864 (-2.1)	58.1% (-5.4)
澳門 Macau	直升機 Helicopter	41 (+0.9)	46.4% (+4.9)	45 (+0.9)	50.8% (+4.9)
<b>小計 - 澳門 Sub-total – Macau</b>		<b>9 159 (+11.3)</b>	<b>46.9% (+3.5)</b>	<b>10 594 (+12.9)</b>	<b>53.0% (+4.2)</b>
高明 Gaoming	雙體船 Catamaran	56 (-0.1)	44.8% (+1.2)	61 (+0.7)	48.7% (+2.3)
江門 Jiangmen	雙體船 Catamaran	73 (-7.6)	25.4% (-13.4)	82 (-4.3)	28.9% (-11.0)
蓮花山 Lianhuashan	雙體船 Catamaran	247 (+21.5)	38.2% (+9.2)	224 (+24.8)	35.1% (+13.0)
南沙 Nansha	雙體船 Catamaran	145 (-18.5)	25.3% (-2.9)	139 (-20.6)	24.4% (-3.8)
蛇口 Shekou	雙體船 Catamaran	101 (-1.9)	14.0% (+5.5)	110 (-14.4)	13.9% (-15.3)
深圳 Shenzhen	雙體船 Catamaran	0 (-100.0)	0% (-100.0)	0 (-100.0)	0% (-100.0)
順德 Shunde	雙體船 Catamaran	352 (+12.2)	47.1% (+13.1)	349 (+8.3)	46.5% (+8.3)
中山 Zhongshan	雙體船 Catamaran	487 (+8.6)	51.6% (+17.0)	502 (+6.9)	42.4% (-3.5)
珠海 Zhuhai	雙體船 Catamaran	798 (+4.0)	45.3% (+6.7)	811 (+3.2)	46.0% (+4.1)
<b>小計 - 內河港口 Sub-total - River Trade Ports</b>		<b>2 259 (+5.0)</b>	<b>38.9% (+9.2)</b>	<b>2 279 (+3.0)</b>	<b>37.3% (+2.6)</b>
廈門 Xiamen	大船 Conventional Ferry	1 (+35.9)	14.2% (+35.9)	1 (+56.1)	14.8% (+40.5)
公海 High Seas	大船 Conventional Ferry	108 (-20.7)	32.4% (-19.6)	108 (-20.7)	32.4% (-19.7)
<b>小計 - 大船 Sub-total – Conventional Ferry</b>		<b>109 (-20.4)</b>	<b>32.1% (-19.4)</b>	<b>109 (-20.4)</b>	<b>32.1% (-19.5)</b>
<b>海事處轄下客運碼頭 Marine Ferry Terminals</b>		<b>11 526 (+9.6)</b>	<b>44.9% (+4.8)</b>	<b>12 982 (+10.6)</b>	<b>49.1% (+4.1)</b>

註釋： (1) 包括港澳客運碼頭、中國客運碼頭和屯門客運碼頭。

Note: (1) Including Macau Ferry Terminal, China Ferry Terminal and Tuen Mun Ferry Terminal.

表 15 - 續  
TABLE 15 - Cont'd

II. 海天客運碼頭  
SkyPier

來往 From/To	運輸工具類別 Type of Carrier	抵港乘客 Passenger Arrivals		離港乘客 Passenger Departures	
		乘客人次(千位數) Passengers ('000)	載客率 Passenger Load Factor	乘客人次(千位數) Passengers ('000)	載客率 Passenger Load Factor
		(%)	(%)	(%)	(%)
澳門 Macau	雙體船 Catamaran	599 (+33.7)	24.7% (-41.0)	282 (+54.0)	12.6% (-41.9)
<b>小計 - 澳門 Sub-total - Macau</b>		<b>599 (+33.7)</b>	<b>24.7% (-41.0)</b>	<b>282 (+54.0)</b>	<b>12.6% (-41.9)</b>
虎門 Humen	雙體船 Catamaran	210 (-3.6)	37.4% (-1.3)	102 (-10.6)	18.2% (-8.6)
南沙 Nansha	雙體船 Catamaran	18 (+261.5)	8.5% (+21.7)	8 (+350.7)	3.6% (+50.7)
蛇口 Shekou	雙體船 Catamaran	487 (+35.6)	38.4% (+30.4)	151 (+14.8)	12.3% (+13.6)
深圳 Shenzhen	雙體船 Catamaran	151 (+12.2)	20.0% (+12.0)	91 (-11.2)	12.1% (-15.6)
中山 Zhongshan	雙體船 Catamaran	30 (+24.3)	22.5% (+22.7)	18 (+23.9)	13.8% (+24.0)
珠海 Zhuhai	雙體船 Catamaran	56 (+26.6)	14.1% (+18.0)	39 (+34.2)	9.8% (+30.4)
<b>小計 - 內河港口 Sub-total - River Trade Ports</b>		<b>952 (+21.3)</b>	<b>28.6% (+13.8)</b>	<b>408 (+3.9)</b>	<b>12.4% (-2.2)</b>
<b>海天客運碼頭 SkyPier</b>		<b>1 551 (+25.8)</b>	<b>27.0% (-8.3)</b>	<b>690 (+19.8)</b>	<b>12.5% (-14.6)</b>

表16  
TABLE 16

2010年按主要貨物裝卸地點分析貨櫃吞吐量  
Container Throughput by Main Cargo Handling Location, 2010

千個標準貨櫃單位  
'000 TEUs

類別 Category	貨櫃碼頭 Container Terminals			貨櫃碼頭以外 Other than Container Terminals			總計 Total
	遠洋 Ocean	內河 River	小計 Sub-total	遠洋 Ocean	內河 River	小計 Sub-total	
裝上 Loaded	(%)	(%)	(%)	(%)	(%)	(%)	(%)
載貨貨櫃 Laden Container	6 864 (+13.7)	1 080 (+15.9)	7 944 (+14.0)	663 (+61.3)	1 472 (-10.6)	2 135 (+3.8)	10 078 (+11.7)
空貨櫃 Empty Container	443 (+2.3)	282 (+26.0)	726 (+10.4)	23 (+5.7)	921 (+11.8)	944 (+11.6)	1 670 (+11.1)
<b>小計 Sub-total</b>	<b>7 307 (+12.9)</b>	<b>1 362 (+17.9)</b>	<b>8 669 (+13.7)</b>	<b>686 (+58.4)</b>	<b>2 393 (-3.1)</b>	<b>3 079 (+6.0)</b>	<b>11 748 (+11.6)</b>
卸下 Discharged							
載貨貨櫃 Laden Container	5 949 (+6.5)	1 270 (+27.5)	7 220 (+9.7)	1 110 (+74.6)	1 594 (+7.7)	2 704 (+27.8)	9 923 (+14.1)
空貨櫃 Empty Container	1 153 (+28.2)	55 (+11.3)	1 209 (+27.3)	43 (-27.0)	776 (-3.3)	819 (-4.9)	2 027 (+12.0)
<b>小計 Sub-total</b>	<b>7 102 (+9.5)</b>	<b>1 326 (+26.7)</b>	<b>8 428 (+11.9)</b>	<b>1 153 (+66.0)</b>	<b>2 370 (+3.8)</b>	<b>3 523 (+18.3)</b>	<b>11 951 (+13.7)</b>
合計 Overall							
載貨貨櫃 Laden Container	12 813 (+10.2)	2 350 (+21.9)	15 163 (+11.9)	1 773 (+69.3)	3 066 (-1.9)	4 839 (+15.9)	20 002 (+12.8)
空貨櫃 Empty Container	1 597 (+19.8)	338 (+23.3)	1 934 (+20.4)	66 (-18.1)	1 697 (+4.3)	1 763 (+3.3)	3 697 (+11.6)
<b>總計 Total</b>	<b>14 410 (+11.2)</b>	<b>2 688 (+22.1)</b>	<b>17 098 (+12.8)</b>	<b>1 839 (+63.1)</b>	<b>4 763 (+0.2)</b>	<b>6 602 (+12.3)</b>	<b>23 699 (+12.6)</b>

表 17  
TABLE 17

2010 年按貨櫃碼頭以外的主要貨物裝卸地點分析裝卸的貨櫃  
Containers Discharged/Loaded at Main Cargo Handling Locations Other than Container Terminals, 2010

千個標準貨櫃單位  
'000 TEUs

主要貨物裝卸地點 (貨櫃碼頭以外) Main Cargo Handling Location (Other than Container Terminals)	遠洋 Ocean				內河 River				總計 Total	
	卸下 Discharged		裝上 Loaded		卸下 Discharged		裝上 Loaded			
	載貨貨櫃 Laden	空貨櫃 Empty	載貨貨櫃 Laden	空貨櫃 Empty	載貨貨櫃 Laden	空貨櫃 Empty	載貨貨櫃 Laden	空貨櫃 Empty	載貨貨櫃 Laden	空貨櫃 Empty
泊位和倉庫碼頭 Berths and Wharves	(%) 96 (+132.7)	(%) 3 (-32.9)	(%) 87 (+2.3)	(%) 3 (-69.7)	(%) 1 230 (+12.2)	(%) 748 (-4.2)	(%) 1 291 (-10.9)	(%) 702 (+10.1)	(%) 2 703 (+1.2)	(%) 1 456 (+1.6)
碇泊處 Anchorages	1 011 (+71.9)	40 (-26.5)	575 (+77.4)	20 (+85.8)	364 (-5.3)	28 (+28.0)	181 (-8.6)	219 (+17.6)	2 132 (+42.6)	306 (+12.2)
浮泡 Buoys	3 (-58.9)	0 (-)	1 (-63.3)	0 (-)	† (-)	† (-)	0 (-)	† (-)	4 (-56.5)	† (-)
<b>總計 Total</b>	<b>1 110 (+74.6)</b>	<b>43 (-27.0)</b>	<b>663 (+61.3)</b>	<b>23 (+5.7)</b>	<b>1 594 (+7.7)</b>	<b>776 (-3.3)</b>	<b>1 472 (-10.6)</b>	<b>921 (+11.8)</b>	<b>4 839 (+15.9)</b>	<b>1 763 (+3.3)</b>

表 18  
TABLE 18

2010 年按貨物種類及運輸方式劃分的裝卸港口貨物  
Port Cargo Discharged/Loaded by Cargo Type and Mode of Transport, 2010

千公噸  
'000 Tonnes

貨物種類 Cargo Type	海運 Seaborne		河運 River		水運總計 Waterborne total	
	卸下 Discharged	裝上 Loaded	卸下 Discharged	裝上 Loaded	卸下 Discharged	裝上 Loaded
	(%)	(%)	(%)	(%)	(%)	(%)
包裝散貨 Break bulk cargo	6 319 (+18.1)	753 (-11.7)	2 429 (+17.4)	4 765 (-0.8)	8 749 (+17.9)	5 518 (-2.4)
貨櫃貨物 Containerized cargo	78 800 (+12.9)	66 179 (+21.4)	26 227 (+18.2)	30 173 (-2.6)	105 027 (+14.1)	96 352 (+12.7)
無包裝液態散貨 Unpacked liquid bulk cargo	17 427 (+4.6)	113 (-58.1)	1 810 (-15.8)	253 (-47.9)	19 236 (+2.2)	366 (-51.6)
無包裝固態散貨 Unpacked solid bulk cargo	11 901 (-13.6)	512 (+44.2)	9 351 (+28.5)	10 804 (-5.6)	21 251 (+1.0)	11 316 (-4.1)
<b>總計 Total</b>	<b>114 447 (+8.4)</b>	<b>67 557 (+20.7)</b>	<b>39 816 (+18.2)</b>	<b>45 995 (-3.6)</b>	<b>154 263 (+10.7)</b>	<b>113 552 (+9.5)</b>

資料來源： 政府統計處船隻及貨運統計組  
Data Source: Shipping and Cargo Statistics Section, Census and Statistics Department

表 19  
TABLE 19

海港繫泊浮泡統計資料  
Harbour Mooring Buoys Statistics

A. 浮泡數目 (年底數字) Number of Buoys (Figures as at End of the Year)	2009	2010
"A 級" 繫泊浮泡數目 No. of "A class" mooring buoys	13	13
"B 級" 繫泊浮泡數目 No. of "B class" mooring buoys	4	4

B. 使用情況 Usage	2009	2010
"A 級" 浮泡訂用日數 Days booked for "A class" buoys	1 140	795
"B 級" 浮泡訂用日數 Days booked for "B class" buoys	576	454
"A 級" 浮泡訂用百分率 Percentage of "A class" buoys used based on booking	16.8%	17.1%
"B 級" 浮泡訂用百分率 Percentage of "B class" buoys used based on booking	16.1%	32.3%
上述數字只顯示訂用情況，實際使用率則如下： Whilst the above figures are indicative of booking usage, the actual physical occupancy rates are as follows:		
"A 級" 浮泡                      "A class" buoys	11.2%	10.6%
"B 級" 浮泡                      "B class" buoys	10.3%	19.7%

C. 浮泡保養 Buoys Maintenance	2009	2010
按期保養的燈浮標                      Light Buoys maintained	114	115
按期保養的養魚區浮泡                      Mariculture Buoys maintained	178	178
按期保養的小型繫泊浮泡                      Minor Mooring maintained	172	175
按期保養的大型繫泊浮泡                      Major Mooring maintained	23	33
按期保養的"A 級" 海港繫泊浮泡                      Maintained the "A Class" Harbour mooring	13	13
按期保養的"B 級" 海港繫泊浮泡                      Maintained the "B Class" Harbour mooring	4	4

資料來源： (A) & (B) 海事處船隻航行監察中心  
(C) 海事處港口後勤組  
Data Sources: (A) & (B) Vessel Traffic Centre, Marine Department  
(C) Port Logistics Section, Marine Department

表 20  
TABLE 20

2010 年按分佈地點分析香港私用繫泡數目  
Number of Private Moorings Laid in Hong Kong by Location, 2010

分佈地點	Location	私用繫泡數目 Number of Private Moorings
<b>銅鑼灣避風塘、香港仔西避風塘及香港仔南避風塘</b> <b>Causeway Bay Typhoon Shelter, Aberdeen West Typhoon Shelter and Aberdeen South Typhoon Shelter</b>		
香港仔南避風塘 (布廠灣)	Aberdeen South Typhoon Shelter (Po Chong Wan)	345
香港仔南避風塘 (白沙灣)	Aberdeen South Typhoon Shelter (Pak Sha Wan)	1
香港仔西避風塘	Aberdeen West Typhoon Shelter	1
銅鑼灣避風塘	Causeway Bay Typhoon Shelter	290
<b>小計</b>	<b>Sub-total</b>	<b>637</b>
<b>在所有其他避風塘及維多利亞港口界限以內的其他地方</b> <b>Other Typhoon Shelters and Elsewhere within the limits of Victoria Port</b>		
長洲避風塘	Cheung Chau Typhoon Shelter	11
荔枝角	Lai Chi Kok	3
新油麻地避風塘	New Yau Ma Tei Typhoon Shelter	18
新油麻地避風塘 (海堤對開海面)	New Yau Ma Tei Typhoon Shelter (Outside Breakwater)	33
油麻地碇泊處以北海面	North of Yau Ma Tei Anchorage	1
藍巴勒海峽避風塘 (海堤對開海面)	Rambler Channel Typhoon Shelter (Outside Breakwater)	6
三家村避風塘	Sam Ka Tsuen Typhoon Shelter	1
汀九	Ting Kau	62
土瓜灣	To Kwa Wan	4
青衣以北海面	Tsing Yi North	4
荃灣	Tsuen Wan	92
屯門避風塘	Tuen Mun Typhoon Shelter	7
油塘灣	Yau Tong Wan	2
<b>小計</b>	<b>Sub-total</b>	<b>244</b>

表 20 – 續  
TABLE 20 – Cont'd

分佈地點	Location	私用繫泡數目 Number of Private Moorings
<b>在香港水域內的其他地方 Elsewhere in the Waters of Hong Kong</b>		
香港仔西避風塘 (海堤對開海面)	Aberdeen West Typhoon Shelter (Outside Breakwater)	16
大嶼山長沙欄	Cheung Sha Lan, Lantau Island	32
大嶼山愉景灣	Discovery Bay, Lantau Island	6
南丫島下尾灣 (電力站對開海面)	Ha Mei Wan, Lamma Island (Off Power Station)	6
西貢白沙灣	Hebe Haven, Sai Kung	680
將軍澳	Junk Bay	1
西貢滘西洲	Kau Sai Chau, Sai Kung	5
大灘海峽高塘口灣	Ko Tong Hau, Long Harbour	1
南丫島鹿洲灣	Luk Chau Wan, Lamma Island	1
熨波洲	Middle Island	89
大嶼山稔樹灣	Nim Shue Wan, Lantau Island	15
北大嶼山	North Lantau	1
赤柱正灘	Stanley Main Beach	4
大埔大美督	Tai Mei Tuk, Tai Po	35
大欖	Tai Lam	3
西貢大網仔	Tai Mong Tsai, Sai Kung	7
西貢大網仔 (阿公灣)	Tai Mong Tsai, Sai Kung (A Kung Wan)	3
大潭港	Tai Tam Harbour	33
西貢斬竹灣	Tsam Chuk Wan, Sai Kung	10
青衣以西海面	Tsing Yi West	3
西貢早禾坑	Tso Wo Hang, Sai Kung	18
屯門避風塘 (海堤對開海面)	Tuen Mun Typhoon Shelter (Outside Breakwater)	6
黃竹角海往灣	Hoi Wong Wan, Wong Chuk Kok	2
南丫島榕樹灣	Yung Shue Wan, Lamma Island	2
<b>小計</b>	<b>Sub-total</b>	<b>979</b>
<b>總計</b>	<b>Total</b>	<b>1 860</b>

資料來源： 海事處私用繫泡分組  
Data Source: Private Mooring Sub-unit, Marine Department

**表 21**  
**TABLE 21**  
**碇泊處一覽**  
**List of Anchorages**

碇泊處 Anchorages	面積 (公頃) Area (Hectares)
<b>A. 檢疫及入境船隻碇泊處</b> <b>Quarantine and Immigration Anchorages</b>	
1. 西面檢疫及入境船隻碇泊處      Western Quarantine and Immigration Anchorage	121.1
2. 東面檢疫及入境船隻碇泊處      Eastern Quarantine and Immigration Anchorage	35.1
3. 屯門入境船隻碇泊處              Tuen Mun Immigration Anchorages	89.9
小計 Sub-total	<b>246.1</b>
<b>B. 危險品碇泊處</b> <b>Dangerous Goods Anchorages</b>	
1. 交椅洲危險品碇泊處              Kau Yi Chau Dangerous Goods Anchorage	288.2
2. 荃灣危險品碇泊處                  Tsuen Wan Dangerous Goods Anchorage	61.9
3. 西面危險品碇泊處                  Western Dangerous Goods Anchorage	220.8
4. 糧船灣海危險品碇泊處           Rocky Harbour Dangerous Goods Anchorage	26.9
5. 將軍澳危險品碇泊處              Junk Bay Dangerous Goods Anchorage	28.9
6. 大鵬灣危險品碇泊處              Mirs Bay Dangerous Goods Anchorage	316.5
7. 南丫島南危險品碇泊處           South Lamma Dangerous Goods Anchorage	228.5
8. 危險品留用碇泊處                  Reserved Dangerous Goods Anchorage	37.3
小計 Sub-total	<b>1 209.0</b>
<b>C. 維修碇泊處</b> <b>Servicing Anchorages</b>	
1. 馬灣碇泊處                              Ma Wan Anchorage	138.4
2. 半山石碇泊處                          Pun Shan Shek Anchorage	352.1
3. 西面 1 號碇泊處                      Western Anchorage No.1	310.6
4. 西面 2 號碇泊處                      Western Anchorage No.2	278.7
5. 西面 3 號碇泊處                      Western Anchorage No.3	272.4
6. 南丫島北碇泊處                      North Lamma Anchorage	375.1
7. 南丫島西北碇泊處                  North West Lamma Anchorage	553.9
8. 油麻地碇泊處                          Yau Ma Tei Anchorage	105.0
9. 奇力 1 號碇泊處                      Kellett Anchorage No.1	74.7
10. 奇力 2 號碇泊處                     Kellett Anchorage No.2	230.4
11. 奇力 3 號碇泊處                     Kellett Anchorage No.3	102.8
12. 深水角 1 號碇泊處                  Sham Shui Kok Anchorage No.1	72.6
13. 深水角 2 號碇泊處                  Sham Shui Kok Anchorage No.2	35.6
小計 Sub-total	<b>2 902.3</b>



表 22  
TABLE 22

避風塘一覽  
List of Typhoon Shelters

	避風塘	Typhoon Shelters	面積 (公頃) Area (Hectares)
1.	南香港仔避風塘 <sup>(1)</sup>	Aberdeen South Typhoon Shelter <sup>(1)</sup>	26.1
2.	西香港仔避風塘	Aberdeen West Typhoon Shelter	34.2
3.	銅鑼灣避風塘 <sup>(2)</sup>	Causeway Bay Typhoon Shelter <sup>(2)</sup>	12.3
4.	長洲避風塘	Cheung Chau Typhoon Shelter	50.0
5.	觀塘避風塘	Kwun Tong Typhoon Shelter	33.8
6.	藍巴勒海峽避風塘	Rambler Channel Typhoon Shelter	12.9
7.	三家村避風塘	Sam Ka Tsuen Typhoon Shelter	1.9
8.	筲箕灣避風塘	Shau Kei Wan Typhoon Shelter	17.2
9.	船灣避風塘	Shuen Wan Typhoon Shelter	10.3
10.	土瓜灣避風塘	To Kwa Wan Typhoon Shelter	14.8
11.	屯門避風塘	Tuen Mun Typhoon Shelter	56.8
12.	新油麻地避風塘	New Yau Ma Tei Typhoon Shelter	64.6
13.	鹽田仔避風塘	Yim Tin Tsai Typhoon Shelter	9.2
14.	喜靈洲避風塘	Hei Ling Chau Typhoon Shelter	76.6
	<b>總計</b>	<b>Total</b>	<b>420.7</b>

備註： 只包括於二零零七年一月二日在政府憲報中(編號: L.N. 285/2006)所公佈的避風塘。

Remark: Including only those typhoon shelters promulgated in the Government Gazette (L.N. 285 of 2006) on 2.1.2007.

註釋： (1) 主要由遊樂船隻使用。

(2) 減少是因為中環灣仔繞道和東區走廊連接路工程計劃影響。

Notes: (1) Mainly for use by pleasure vessels.

(2) Variation is due to the Central-Wanchai Bypass & Island Eastern Corridor Link project.

資料來源： 海事處策劃、發展協調及港口保安部

Data Source: Planning, Development & Port Security Branch, Marine Department

表 23  
TABLE 23

公眾貨物裝卸區一覽  
List of Public Cargo Working Areas

	公眾貨物裝卸區 Public Cargo Working Area	面積 (公頃) Area (Hectares)	符合發牌條件之 停泊位長度 (米) Licensable Seafrontage (in Metres)
1.	茶果嶺公眾貨物裝卸區 Cha Kwo Ling Public Cargo Working Area	3.9	920
2.	柴灣公眾貨物裝卸區 Chai Wan Public Cargo Working Area	2.1	600
3.	觀塘公眾貨物裝卸區 Kwun Tong Public Cargo Working Area	2.3	692
4.	新油麻地公眾貨物裝卸區 New Yau Ma Tei Public Cargo Working Area	6.8	1 212
5.	藍巴勒海峽公眾貨物裝卸區 Rambler Channel Public Cargo Working Area	4.1	1 036
6.	昂船洲公眾貨物裝卸區 Stonecutters Island Public Cargo Working Area	3.6	672
7.	屯門公眾貨物裝卸區 Tuen Mun Public Cargo Working Area	3.3	660
8.	西區公眾貨物裝卸區 Western District Public Cargo Working Area	3.3	880
	<b>總計 Total</b>	<b>29.4</b>	<b>6 672</b>

資料來源： 海事處貨物裝卸組  
Data Source: Cargo Handling Section, Marine Department

表 24  
TABLE 24

垃圾收集、油污和檢控個案統計資料  
Refuse Collection, Oil Pollution and Prosecution Statistics

A. 垃圾收集和油污事故  
Refuse Collection and Oil Pollution Incident

		2008	2009	2010
1.	從海港收集的垃圾(公噸) Refuse collected from harbour (tonnes)	12 913	11 726	11 368
2.	從船舶收集的垃圾(公噸) Refuse collected from vessel (tonnes)	4 261	4 469	4 420
3.	接報的疑似油污事故(宗) Alleged Oil Pollution incidents, reported (cases)	114	145	168

B. 檢控統計數字  
Prosecution Statistics

罪行 Offence	陳詞/聆訊個案 No. of Cases Heard		定罪個案 No. of Cases Convicted		罰款 Fine (HK\$)	
	2009	2010	2009	2010	2009	2010
1. 違反碰撞規例 Breach of Collision Regulations	62	55	53	53	89 350	48 800
2. 船上沒有合格船長/輪機員 No qualified master/engineer on board	353	261	349	254	214 150	177 890
3. 違反牌照/准許證條件 Breach of license/permit conditions	47	54	47	50	28 550	37 250
4. 未經允許進入機場入口區域 Entered into airport approach area without permission	9	9	9	9	8 800	7 300
5. 靠泊於已展示禁止船隻靠泊告示的岸壁/登岸梯級 Lying alongside seawall/landing steps prohibited by Notice	8	17	7	17	5 400	14 250
6. 船隻未有領牌/並無有效牌照 Vessel was not licensed/did not have a valid license	111	97	109	97	113 100	86 800
7. 未獲允許運載乘客/超額運載乘客 Carrying passenger without permission/excessive passengers	46	59	44	59	22 050	31 550
8. 沒有陳示有效的驗船/保險證明書 Failing to display valid certificate of survey/insurance	27	20	27	19	14 050	13 550
9. 超速行駛 Steaming in excessive speed	33	49	33	49	24 700	48 350
10. 海上拋置廢物 Marine littering	2	0	2	0	1 700	0
11. 海上拋置廢物(定額罰款) <sup>(1)</sup> Marine littering (Fixed Penalty Notice) <sup>(1)</sup>	70	43	68	40	103 750	64 500
12. 在公共渡輪上吸煙 <sup>(2)</sup> Smoking on board public ferry <sup>(2)</sup>	0	0	0	0	0	0
13. 排放黑煙 Emission of black smoke	0	1	0	1	0	2 500
14. 其他海事罪行 Other marine offences	381	404	370	397	310 060	343 150
<b>總計 Total</b>	<b>1 149</b>	<b>1 069</b>	<b>1 118</b>	<b>1 045</b>	<b>935 660</b>	<b>875 890</b>

註釋： (1) 三個申請法庭命令個案，附加罰款\$4,500。  
(2) 個案由各公共渡輪公司提出再轉交海事處跟進檢控工作。

Notes: (1) Three Court Orders applied and an additional penalty of HK\$4,500 imposed.  
(2) Cases initiated by public ferry companies and referred to Marine Department for follow up prosecution actions.

資料來源： (A) 海事處港口後勤組  
(B) 海事處檢控小組

Data Sources: (A) Port Logistics Section, Marine Department  
(B) Prosecution Unit, Marine Department

表 25  
TABLE 25

2010 年底按噸位等級分析香港持牌船舶  
Hong Kong Licensed Vessels by Tonnage Classification, as at year end 2010

船舶類型 Vessel Type		60 淨噸及以下 60 Net Tons and Below	61 至 300 淨噸 61 - 300 Net Tons	300 淨噸以上 Over 300 Net Tons	總計 Total
第 I 類 Class I	(a) 渡輪船舶 Ferry Vessel	11	37	9	57
	(b) 水上食肆 Floating Restaurant	0	0	1	1
	(c) 小輪 Launch	188	51	0	239
	(d) 多用途船舶 Multi-Purposes Vessel	10	4	2	16
	(e) 原始船舶 Primitive Vessel	68	1	0	69
	(f) 固定船舶 Stationary Vessel	0	0	0	0
	<b>小計</b> <b>Sub-total</b>	<b>277</b>	<b>93</b>	<b>12</b>	<b>382</b>
第 II 類 Class II	(a) 起重機躉船 Crane Barge	0	1	4	5
	(b) 危險品運輸船 Dangerous Goods Carrier	1	10	20	31
	(c) 挖泥船 Dredger	0	2	1	3
	(d) 乾貨貨船 Dry Cargo Vessel	49	62	10	121
	(e) 非自航駁船 Dumb Lighter	4	23	426	453
	(f) 食油運輸船 Edible Oil Carrier	0	0	18	18
	(g) 平面工作躉 Flat-Top Work Barge	23	14	23	60
	(h) 浮塢 Floating Dock	0	0	3	3
	(i) 水上工場 Floating Workshop	0	1	0	1
	(j) 開底躉船 Hopper Barge	3	0	28	31
	(k) 登岸平台 Landing Platform	40	0	0	40
	(l) 登岸浮躉 Landing Pontoon	2	22	12	36
	(m) 有毒液體物質運輸船 Noxious Liquid Substance Carrier	0	0	2	2
	(n) 石油運輸船 Oil Carrier	23	112	44	179
	(o) 領港船 Pilot Boat	18	0	0	18

表 25 – 續  
TABLE 25 – Cont'd

船舶類型 Vessel Type		60 淨噸及以下 60 Net Tons and Below	61 至 300 淨噸 61 - 300 Net Tons	300 淨噸以上 Over 300 Net Tons	總計 Total
第 II 類 Class II	(p) 特別用途船舶 Special Purpose Vessel	3	0	2	5
	(q) 固定船舶 Stationary Vessel	103	26	6	135
	(r) 交通船 Transportation Boat	26	0	0	26
	(s) 交通舢舨 Transportation Sampan	78	0	0	78
	(t) 拖船 Tug	59	103	0	162
	(u) 供水船 Water Boat	12	7	0	19
	(v) 工作船 Work Boat	288	10	1	299
	<b>小計</b> <b>Sub-total</b>	<b>732</b>	<b>393</b>	<b>600</b>	<b>1 725</b>
第 III 類 Class III	(a) 運魚船 Fish Carrier	11	8	0	19
	(b) 漁船舢舨 Fishing Sampan	846	0	0	846
	(c) 漁船 Fishing Vessel	691	1 435	0	2 126
	(d) 舷外機開敞式舢舨 Outboard Open Sampan	2 580	0	0	2 580
	<b>小計</b> <b>Sub-total</b>	<b>4 128</b>	<b>1 443</b>	<b>0</b>	<b>5 571</b>
第 IV 類 Class IV	(a) 機械輔助帆船 Auxiliary Powered Yacht	N.A.	N.A.	N.A.	630
	(b) 遊樂船 Cruiser	N.A.	N.A.	N.A.	2 085
	(c) 開敞式遊樂船 Open Cruiser	N.A.	N.A.	N.A.	4 209
	<b>小計</b> <b>Sub-total</b>	<b>N.A.</b>	<b>N.A.</b>	<b>N.A.</b>	<b>6 924</b>
	住家船舶 <sup>(2)</sup> Dwelling Vessel <sup>(2)</sup>	-	-	-	4
<b>總計</b> <b>Total</b>		<b>5 137</b>	<b>1 929</b>	<b>612</b>	<b>14 606<sup>(1)</sup></b>

註釋： (1) 已包括 40 艘閑置船舶。  
(2) 全部在銅鑼灣避風塘。

資料來源： 海事處牌照及關務組  
Data Source: Licensing and Port Formalities Section, Marine Department

Notes: (2) Including 40 laid-up vessels.  
(2) All in Causeway Bay Typhoon Shelter.

表 26  
TABLE 26

船舶安全監督統計資料  
Ship Safety Statistics

A. 貨船安全統計數字 Cargo Ships Safety Statistics	2009	2010
<b>海事處註冊貨船數目</b> <b>No. of Cargo Ships in the Hong Kong Register</b> <ol style="list-style-type: none"> <li>1. 所管理公約貨船數目 (截至年底) No. of convention cargo ships (as at year end)</li> <li>2. 所管理公約貨船總噸位 (千公噸) (截至年底) Gross register tonnage of convention cargo ships ('000 tonnes) (as at year end)</li> <li>3. 新申請在香港註冊公約貨船數目 No. of convention cargo ships newly registered</li> <li>4. 新申請在香港註冊公約貨船總噸位 (千公噸) Gross register tonnage of convention cargo ships newly registered ('000 tonnes)</li> </ol>		
<b>海事處註冊貨船品質審查/檢驗數目</b> <b>No. of Hong Kong Registered Cargo Ships Quality Checked/Inspected</b> <ol style="list-style-type: none"> <li>1. 品質審查的註冊貨船數目 Quality checks on Hong Kong registered cargo ships</li> <li>2. 品質檢驗和稽核貨船數目 No. of flag state quality control ship inspections and company visits</li> <li>3. 審核船體、機械和設備圖則數目 No. of plans examined in respect of hull, machinery and equipment</li> </ol>		
<b>貨船設備安全證明書</b> <b>Cargo Ship Safety Equipment Certificate</b> <ol style="list-style-type: none"> <li>1. 所簽發的豁免證明書數目 No. of exemption certificates issued</li> <li>2. 應其他國家機關要求而檢驗的外來船舶，以簽發設備安全證明書 Foreign ships surveyed at the request of other national authorities for the issue of SEC</li> </ol>		
<b>貨船無線電安全證明書</b> <b>Cargo Ship Safety Radio Certificate</b> <ol style="list-style-type: none"> <li>1. 所簽發的豁免證明書數目 No. of exemption certificates issued</li> <li>2. 應其他國家機關要求而檢驗的外來船舶，以簽發無線電安全證明書 Foreign ships surveyed at the request of other national authorities for the issue of SRC</li> </ol>		
<b>其他</b> <b>Others</b> <ol style="list-style-type: none"> <li>1. 所簽發的《海員培訓、發證和值班標準國際公約》最低安全配員證明書 STCW Minimum Safe Manning Certificate issued</li> <li>2. 對構造安全、設備安全、無線電安全證明書的監察，包括中期檢驗 Safety Construction, Equipment and Radio Certificates monitored including intermediate surveys</li> <li>3. 對國際載重線證明書的監察，包括定期檢驗 International Load Line Certificate monitored including periodic surveys</li> <li>4. 對國際防止油污證明書的監察 - 續期、年度/中期檢驗 International Oil Pollution Prevention Certificate monitored - renewal, annual/intermediate surveys</li> <li>5. 對新船公司所作的國際安全管理稽核 ISM audits of new shipping companies</li> <li>6. 其他檢驗 (例如合格證明書等) Other surveys (e.g. Certificates of Fitness etc)</li> </ol>		

表 26 – 續  
TABLE 26 – Cont'd

B. 客船安全統計數字 Passenger Ships Safety Statistics	2009	2010
<b>所管理公約客船</b> <b>Convention Passenger Ships Administered</b>		
1. 數目 Number	60	62
2. 總噸位 Gross register tonnage	66 099	67 017
<b>客船安全證明書</b> <b>Passenger and Safety Certificates</b>		
1. 客船安全證明書 - 國際航線 PSSC - International Voyage	0	0
2. 客船安全證明書/高速船安全證明書 - 內河航限 PSSC/HSCSC - River Trade Limits	HSCSC – 76	PSSC-1 HSCSC-70
3. 延長客船安全證明書有效期 Extensions to Passenger and Safety Certificate	16	1
4. 客船安全證明書檢驗船舶總數 Total number of vessels surveyed for P&S Certificate	76	71
5. 受檢驗的客船無線電裝置 Passenger ship radio installations surveyed	76	71
6. 所簽發的載重線證書數目 No. of Load Line Certificate issued	20	9
7. 所簽發的載重線豁免證書數目 No. of Load Line Exemption Certificate issued	21	10
8. 所簽發的國際防止油污證書及增補數目 No. of IOPP Certificate with Supplement issued	18	10
9. 所簽發的國際防止油污豁免證書數目 No. of IOPP Exemption Certificate issued	5	0
10. 所簽發的最低安全配員證書數目 No. of Minimum Safe Manning Certificate issued	6	1
11. 對船公司所作的安全管理稽核 ISM audits of shipping companies	7	7
12. 對船舶所作的安全管理稽核 ISM audits of ships	23	30
13. 所簽發的 ISM 符合證明數目 No. of ISM Document of Compliance (DOC) issued	4	3
14. 所簽發的 ISM 安全管理證明書數目 No. of ISM Safety Management Certificate (SMC) issued	18	17
15. 所簽發的臨時 ISM 安全管理證明書數目 No. of Interim ISM Safety Management Certificate (SMC) issued	7	3

表 26 – 續  
TABLE 26 – Cont'd

B. 客船安全統計數字 (續) Passenger Ships Safety Statistics (Cont'd)	2009	2010
<b>雜項檢查，圖則審核和設備</b> <b>Miscellaneous Inspection, Plans Approval and Equipment</b>		
1. 審核客船船體、機械和設備圖則 Plans examined for hull, machinery and equipment of passenger ships	1 235	2 471
2. 簽發檢查證明書、雜項檢驗／檢查 Certificate of Inspection issued, miscellaneous surveys/inspections	120	100

C. 港口國監督統計數字 Port State Control Statistics	2009	2010
<b>在香港特別行政區港口內進行的港口國監督檢查：</b> <b>Port State Control Inspections in the Harbour of Hong Kong Special Administrative Region:</b>		
1. 在履行身為港口國監督委員而對《東京諒解備忘錄》應有的責任下，受港口國監督檢查的個別外來船舶數目 Number of individual foreign ships inspected under the obligation to Tokyo MOU, as a member Port State of the Committee	776	820
檢查遠洋船舶數目 Number of ocean vessels inspected	692	734
檢查沿岸船舶數目 Number of coastal vessels inspected	84	86
2. 對外來船舶進行港口國監督檢查 (包括複檢) 總數 Total number of Port State Control inspections carried out for foreign ships, including re-inspections	798	836
3. 被扣留在港的低於安全標準的船舶數目 Number of sub-standard ships detained in Hong Kong	41	29

資料來源： (A) 海事處船舶註冊及  
商船海員管理處  
海事處貨船安全組  
(B) 海事處客船安全組  
(C) 海事處港口國監督組

Data Sources: (A) Shipping Registry and  
Mercantile Marine Office, Marine Department  
Cargo Ships Safety Section, Marine Department  
(B) Passenger Ships Safety Section, Marine Department  
(C) Port State Control Section, Marine Department

表 27  
TABLE 27

本地船隻安全統計資料  
Local Vessels Safety Statistics

I. 船舶的檢驗和檢查統計 Statistics on Surveys and Inspections of Vessels	2009	2010
<b>A. 簽發/批註證明書/適合聲明/紀錄等給本地船隻 Certificates/Declaration/Records etc. Issued/Endorsed to Local Vessels</b> <ol style="list-style-type: none"> <li>1. 簽發/批註乾舷勘定證明書數目 No. of Freeboard Assignment Certificates Issued/Endorsed</li> <li>2. 簽發安全設備檢驗紀錄數目 No. of Survey Record of Safety Equipment Issued</li> <li>3. 簽發/批註載重線證明書數目 No. of Load Line Certificate Issued/Endorsed</li> <li>4. 簽發噸位丈量記錄數目 No. of Record of Tonnage Measurement Issued</li> <li>5. 簽發/批註散裝有毒液體物質的防污證明書數目 No. of Pollution Prevention Certificates for the Carriage of Noxious Liquid Substances in Bulk Issued/Endorsed</li> <li>6. 簽發適合運載危險品聲明數目 No. of Declaration of Fitness for the Carriage of Dangerous Goods Issued</li> <li>7. 簽發香港防止油類污染證明書數目 No. of Hong Kong Oil Pollution Prevention Certificates Issued</li> <li>8. 簽發/批註香港防止空氣污染證明書數目 No. of Hong Kong Air Pollution Prevention Certificates Issued/Endorsed</li> <li>9. 簽發驗船證明書數給本地船隻數目 No. of Certificate of Survey Issued for Local Vessels</li> </ol> <p>第 I 類 Class I</p> <p>第 II 類 Class II</p> <p>第 III 類 Class III</p> <p>第 IV 類 Class IV</p>		
<b>總計 Total</b>	<b>4 299</b>	<b>4 004</b>
<b>B. 審批圖則/文件 Plans/Documents Examined</b> <ol style="list-style-type: none"> <li>1. 船隻傾斜測試及穩性確定數目 No. of Vessels Inclining Tested and Stability Information Assessed</li> <li>2. 審核本地船隻的船體，機械和設備圖則數目 No. of Plans of Hull, Machinery and Equipment Examined for Local Vessels</li> </ol>		
<b>總計 Total</b>	<b>5 161</b>	<b>16 069</b>

表 27 – 續  
TABLE 27 – Cont'd

I. 船舶的檢驗和檢查統計 (續) Statistics on Surveys and Inspections of Vessels (Cont'd)	2009	2010
<b>C. 檢驗本地船隻隻數 (包括新船、現有船隻及抽查船隻等)</b> <b>Local Vessels Inspected (New, Existing and Spot-check Vessels etc.)</b> <ol style="list-style-type: none"> <li>1. 執行其他政府部門要求檢查的船隻數目 No. of Inspections of Vessels for Other Government Departments</li> <li>2. 完成首次檢驗而新領牌的船隻數目 No. of Newly Licensed Vessels after Completed Initial Survey</li> <li>3. 在本港檢驗本地船隻的數目 No. of Local Vessels Inspected Locally</li> </ol>	<p style="text-align: center;">108</p> <p style="text-align: center;">43</p> <p style="text-align: center;">3 260</p>	<p style="text-align: center;">91</p> <p style="text-align: center;">23</p> <p style="text-align: center;">2 934</p>
<b>總計</b> <b>Total</b>	<p style="text-align: center;"><b>3 411</b></p>	<p style="text-align: center;"><b>3 048</b></p>
<b>D. 檢驗本地船隻次數 (包括新船、現有船隻及抽查船隻等)</b> <b>Inspection Visits Made to Local Vessels (New, Existing and Spot-check Vessels etc.)</b> <ol style="list-style-type: none"> <li>1. 檢驗碰撞後破損的本地船隻數目 No. of Inspection Surveys of Damaged Local Vessels after Collision</li> <li>2. 抽查及複驗本地船隻數目 Number of Spot Checks and Audit Checks on Local Vessels</li> <li>3. 海外檢驗本地船隻次數 No. of Overseas Visits for Inspection of Local Vessels</li> <li>4. 本地船隻在本港首次及定期檢查次數 No. of Initial and Periodical Inspection Visits Made Locally to Local Vessels</li> </ol>	<p style="text-align: center;">13</p> <p style="text-align: center;">90</p> <p style="text-align: center;">134</p> <p style="text-align: center;">4 272</p>	<p style="text-align: center;">14</p> <p style="text-align: center;">81</p> <p style="text-align: center;">191</p> <p style="text-align: center;">3 904</p>
<b>總計</b> <b>Total</b>	<p style="text-align: center;"><b>4 509</b></p>	<p style="text-align: center;"><b>4 190</b></p>
<b>E. 舉辦安全講座及研討會</b> <b>Talks and Seminars Conducted</b>	<p style="text-align: center;"><b>30</b></p>	<p style="text-align: center;"><b>2</b></p>

資料來源： 海事處本地船舶安全組

Data Source: Local Vessels Safety Section, Marine Department

表 27 – 續  
TABLE 27 – Cont'd

II. 檢查正在修理、拆卸或從事裝卸貨物的船舶、調查海上工業意外事故 Inspections of Vessels Undergoing Repair or Demolition or Engaged in Cargo Handling, Investigations of Marine Industrial Accidents	2009	2010
A. 海上貨櫃檢查 Marine Containers Inspected	5 218	7 836
B. 海事工業安全檢查 (不包括海上貨櫃的檢查數目) Marine Industrial Safety Inspections (excluding number of marine containers inspected)		
1. 檢查正在修理的船舶 Inspections of Vessels Undergoing Repair	1 598	1 206
2. 檢查海事工程船舶 Inspections of Vessels Engaged in Marine Construction	119	129
3. 檢查遠洋船裝卸貨物工具 Cargo Gear Inspections on Ocean-going Vessels	211	321
4. 檢查遠洋船裝卸貨物 Stevedoring Inspections on Ocean-going Vessels	2 297	2 449
5. 檢查駁船裝卸貨物工具 Cargo Gear Inspections on Lighters	3 435	1 969
6. 檢查駁船裝卸貨物 Stevedoring Inspections on Lighters	1 469	2 357
總計 Total	9 129	8 431
C. 海事工業意外的調查及查詢數目 Marine Industrial Accidents Investigated/Inquired		
1. 調查致命的非海事工業意外 Non-marine Industrial Fatal Accidents Investigated	0	0
2. 調查致命的海事工業意外 Marine Industrial Fatal Accidents Investigated	1	6
3. 調查嚴重意外 Serious Accidents Investigated	3	1
4. 調查嚴重意外 (無傷亡) Serious Incidents (No Casualty) Investigated	0	1
5. 查詢非嚴重意外 Non-serious Accidents Inquired	* 196	# 177
總計 Total	* 200	# 185



表 27 – 續  
TABLE 27 – Cont'd

III. 香港註冊船舶的損失數目 <sup>(1)</sup> Loss of Vessels Registered in Hong Kong <sup>(1)</sup>						
船舶類型 Class of Vessel	該類船隻數目 Number of Vessels		損失船隻數目 Number Lost		損失船隻百分率 Percentage Lost	
	2009	2010	2009	2010	2009	2010
公約船舶 (香港註冊) Convention (HK Registered)	1 267	1 511	1	0	0.1%	0%

註釋： (1) 指因遇險而導致損失的船舶。  
Note: (1) Refers to loss of vessels due to casualty or accident.

資料來源： 海事處船舶註冊及商船海員管理處  
Data Source: Shipping Registry and Mercantile Marine Office, Marine Department

IV. 2010 年海上意外事故統計 Marine Accidents Statistics in 2010									
意外事故類別 Type of Accident	香港水域範圍以內 <sup>(1)</sup> Within Hong Kong Waters <sup>(1)</sup>				香港水域範圍以外 <sup>(2)</sup> Outside Hong Kong Waters <sup>(2)</sup>				
	宗數 No. of Cases	死亡人數 Persons Killed	受傷人數 Persons Injured	失蹤人數 Persons Missing	宗數 No. of Cases	死亡人數 Persons Killed	受傷人數 Persons Injured	失蹤人數 Persons Missing	
碰撞 Collision	182	8	23	0	27	0	9	8	
擱淺/ 觸底 Stranding/ Striking	34	0	4	0	16	0	0	0	
沉沒/ 入水 Foundering/ Sinking	23	0	4	0	2	0	0	0	
火警/ 爆炸 Fire/ Explosion	11	0	19	0	9	0	1	0	
翻沉/ 傾斜 Capsized/ Listing	18	0	3	0	1	0	0	0	
接觸 Contact	36	0	5	0	21	0	1	0	
其他 Others	25	0	0	0	14	0	1	0	
<b>總計 Total</b>	<b>329</b>	<b>8</b>	<b>58</b>	<b>0</b>	<b>90</b>	<b>0</b>	<b>12</b>	<b>8</b>	

註釋： (1) 包括所有船舶的意外及傷亡數字 (如香港註冊及外國註冊船舶、本地領牌船隻、內河船隻、沿海船隻、政府船舶等等)。

(2) 只包括在香港註冊或領牌的船舶之意外及傷亡數字。

Notes: (1) Including accidents and casualties figures of all vessels (such as Hong Kong registered and foreign registered vessels, local licensed vessels, river trade vessels, coastal vessels, government launches, etc.).

(2) Including accidents and casualties figures for Hong Kong registered vessels or local licensed vessels only.

資料來源： 海事處海事意外調查組

Data Source: Marine Accident Investigation Section, Marine Department

表 27 – 續  
TABLE 27 – Cont'd

V. 海上意外事故調查 Marine Accident Investigation	2009	2010
調查意外事故 《船舶及港口管制條例》及 《商船條例》	28	31
初步研訊 《商船條例》	1	0
領港研訊 《領港條例》	0	0
海事法庭	0	0
調查委員會	0	0
對調查委員會裁決提出上訴	0	0

資料來源： 海事處海事意外調查組

Data Source: Marine Accident Investigation Section, Marine Department

表 28  
TABLE 28

海員發證、註冊和僱用統計資料  
Seafarers' Certification, Registration and Employment Statistics

A. 遠洋合格證書 Seagoing Certificates of Competency	2009		2010	
	申請人數 Number of Applications	及格人數 Number of Successes	申請人數 Number of Applications	及格人數 Number of Successes
<b>1. 商船船長及高級船員 Master Mariner and Deck Officer</b>				
一級甲板高級船員 (商船船長) Class 1 (Master Mariner)				
筆試 Written Examination	3	0	2	1
口試 Oral Examination	4	1	2	1
其他 Other Services	*28	*28	37	37
二級甲板高級船員 Deck Officer Class 2				
筆試 Written Examination	0	0	0	0
口試 Oral Examination	3	2	0	0
訊號 Signal	0	0	0	0
其他 Other Services	5	5	13	13
三級甲板高級船員 Deck Officer Class 3				
筆試 Written Examination	17	1	9	2
口試 Oral Examination	6	4	8	7
訊號 Signal	11	7	8	5
其他 Other Services	14	14	19	19
<b>小計 Sub-total</b>	<b>*91</b>	<b>*62</b>	<b>98</b>	<b>85</b>
<b>2. 輪機師 Marine Engineer Officer</b>				
一級輪機師 Marine Engineer Officer – Class 1				
筆試 Written Examination	2	1	2	0
口試 Oral Examination	1	1	3	1
其他 Other Services	22	22	31	31
二級輪機師 Marine Engineer Officer - Class 2				
筆試 Written Examination	24	4	34	5
口試 Oral Examination	*20	3	34	7
其他 Other Services	12	12	20	20
三級輪機師 Marine Engineer Officer - Class 3				
口試 Oral Examination	3	2	13	4
其他 Other Services	35	35	39	39
<b>小計 Sub-total</b>	<b>*119</b>	<b>80</b>	<b>176</b>	<b>107</b>
<b>總計 Total</b>	<b>*210</b>	<b>*142</b>	<b>274</b>	<b>192</b>

表 28 – 續  
TABLE 28 – Cont'd

B. 內河航行合格證書 River Trade Certificates of Competency	2009		2010	
	申請人數 Number of Applications	及格人數 Number of Successes	申請人數 Number of Applications	及格人數 Number of Successes
<b>1. 甲板高級船員 Deck Officer</b>				
一級甲板高級船員 Deck Officer Class 1				
筆試 Written Examination	1	0	0	0
口試 Oral Examination	2	1	7	3
訊號 Signal	0	0	0	0
其他 Other Services	33	33	28	28
二級甲板高級船員 Deck Officer Class 2				
筆試 Written Examination	12	4	11	4
口試 Oral Examination	*3	*2	9	8
訊號 Signal	0	0	0	0
其他 Other Services	14	14	14	14
三級甲板高級船員 Deck Officer Class 3				
筆試 Written Examination	92	25	59	21
口試 Oral Examination	*39	*22	37	24
訊號 Signal	*53	*25	80	32
其他 Other Services	14	14	9	9
<b>小計 Sub-total</b>	<b>*263</b>	<b>*140</b>	<b>254</b>	<b>143</b>
<b>2. 輪機師 Marine Engineer Officer</b>				
一級輪機師 Marine Engineer Officer - Class 1				
其他 Other Services	7	7	9	9
二級輪機師 Marine Engineer Officer - Class 2				
其他 Other Services	5	5	20	20
三級輪機師 Marine Engineer Officer - Class 3				
其他 Other Services	4	4	4	4
<b>小計 Sub-total</b>	<b>*99</b>	<b>*38</b>	<b>128</b>	<b>60</b>
<b>總計 Total</b>	<b>*362</b>	<b>*178</b>	<b>382</b>	<b>203</b>

表 28 – 續  
TABLE 28 – Cont'd

C.1 本地合格證書 Local Certificates of Competency	2009		2010	
	申請人數 Number of Applications	及格人數 Number of Successes	申請人數 Number of Applications	及格人數 Number of Successes
<b>1. 船長 Coxswain</b>				
船長一級 Coxswain Grade 1	34	20	12	12
其他 Other Services	82	82	68	68
船長二級 Coxswain Grade 2	242	37	203	36
其他 Other Services	117	117	103	102
船長三級 Coxswain Grade 3	889	276	716	281
其他 Other Services	*438	*437	197	197
<b>小計 Sub-total</b>	<b>*1 802</b>	<b>*969</b>	<b>1 299</b>	<b>696</b>
<b>2. 輪機操作員 Engine Operator</b>				
輪機操作員一級 Engine Operator Grade 1	0	0	0	0
其他 Other Services	96	96	72	72
輪機操作員二級 Engine Operator Grade 2	18	3	29	12
其他 Other Services	25	25	1	0
輪機操作員三級 Engine Operator Grade 3	526	331	451	284
其他 Other Services	*184	*184	98	96
<b>小計 Sub-total</b>	<b>*849</b>	<b>*639</b>	<b>651</b>	<b>464</b>
<b>總計 Total</b>	<b>*2 651</b>	<b>*1 608</b>	<b>1 950</b>	<b>1 160</b>

C.2 遊樂船隻操作人合格證明書 Pleasure Vessel Operator Certificate of Competency	2009		2010	
	申請人數 Number of Applications	及格人數 Number of Successes	申請人數 Number of Applications	及格人數 Number of Successes
遊樂船隻操作人一級 Pleasure Vessel Operator Grade 1	*93	*44	168	100
其他 Other Services	311	311	216	216
遊樂船隻操作人二級 Pleasure Vessel Operator Grade 2	*4 564	*2 277	5 377	2 627
其他 Other Services	*445	444	440	439
<b>總計 Total</b>	<b>*5 413</b>	<b>*3 076</b>	<b>6 201</b>	<b>3 382</b>

表 28 – 續  
TABLE 28 – Cont'd

D. 部門考試 Departmental Examinations	2009		2010	
	考試人數 Examined	及格人數 Passed	考試人數 Examined	及格人數 Passed
一級本地船長 Coxswain Grade 1	0	0	0	0
二級本地船長 Coxswain Grade 2	88	20	54	20
三級本地船長 Coxswain Grade 3	25	11	44	28
一級輪機操作員 Engine Operator Grade 1	0	0	0	0
二級輪機操作員 Engine Operator Grade 2	24	7	50	19
三級輪機操作員 Engine Operator Grade 3	92	29	45	19
<b>總計 Total</b>	<b>229</b>	<b>67</b>	<b>193</b>	<b>86</b>

E. 其他考試/評定 Other Examinations/Assessments	2009		2010	
	申請人數 Number of Applications	及格人數 Number of Successes	申請人數 Number of Applications	及格人數 Number of Successes
救生艇筏熟練操作證書 Proficiency in Survival Craft Certificate	0	0	0	0
高級水手/水手證書 AB/EDH Certificate	0	0	0	0
船舶保安主任證書 Certificate of Proficiency of Ship Security Officer	923	923	27	27
類型級別證書 (考試、重新生效及夜航批准) Type Rating Certificate (Examination, Revalidation and Night Service Approval)	*567	*566	553	552
香港執照 Hong Kong Licence	*11 691	*11 691	14 863	14 863
本地豁免 Local Exemption	13	13	6	6
<b>總計 Total</b>	<b>*13 194</b>	<b>*13 193</b>	<b>15 449</b>	<b>15 448</b>

備註： 其他 - 包括有關證書批註、豁免、重新生效等事宜的申請。  
Remark: Other services - including applications for endorsement, exemption and revalidation etc.

註釋： \* 修訂後的數字。  
Note: \* Amended figures.

表 28 – 續  
TABLE 28 – Cont'd

F. 截至 2010 年 12 月 31 日為止的海員註冊人數 Seafarer's Registration as at 31.12.2010			
根據第478章註冊的海員 Seafarers Registered Under Cap.478	第一部 Part I	第二部 Part II	合計 Total
		3 852	1 369

G. 2010 年所簽發的僱用登記簿數目 Employment Registration Books Issued, 2010		
續發簿 Subsequent Books		0
補發簿 Replacement Books		6
新海員簿 New Entrants Books		135
<b>總計 Total</b>		<b>141</b>

H. 2010 年海員就業統計數字 Seafarers Employment Statistics, 2010				
期間 Period	僱用海員方式 Seafarers Employed Through			
	核准公司名冊 Permitted C.R.	總名冊 G.R.	緊急僱用/重新僱用等 Emergency/Re-employment, etc.	總計 Total
2010年第一季 1 <sup>st</sup> Quarter 2010	24	5	0	29
2010年第二季 2 <sup>nd</sup> Quarter 2010	69	5	109	183
2010年第三季 3 <sup>rd</sup> Quarter 2010	58	1	542	601
2010年第四季 4 <sup>th</sup> Quarter 2010	59	0	252	311
<b>總計 Total</b>	<b>210</b>	<b>11</b>	<b>903</b>	<b>1 124</b>

表 28 – 續  
TABLE 28 – Cont'd

<b>I. 船公司及職位統計數字 Companies and Posts Statistics</b>	
截至2010年12月31日為止在商船海員管理處登記僱用本港註冊海員的船公司數目 Shipping companies listed with M. M. Office to employ Hong Kong registered seafarers as at 31.12.2010	30
2010年按船公司所交周年報表而編製的本港海員就業職位 Posts filled by Hong Kong seafarers as compiled from annual returns submitted by shipping companies, 2010	1 542

<b>J. 2010年訂立和終結的香港註冊船舶船員協議條款 Crew Agreement of Hong Kong Registered Ships Opened and Closed, 2010</b>				
	所訂立的協議 Agreements Opened		終結的協議 Agreements Closed	
	在香港境內 In Hong Kong	在香港境外 Outside Hong Kong	在香港境內 In Hong Kong	在香港境外 Outside Hong Kong
船員協議條款數目 No. of agreements	58	1 090	54	1 022
<b>總計 Total</b>	<b>1 148</b>		<b>1 076</b>	

<b>K. 香港註冊船舶僱用和解職的海員人次<sup>(1)</sup> Number of Employment and Discharge of Seafarers by Hong Kong Registered Ships<sup>(1)</sup></b>			
	<b>2008</b>	<b>2009</b>	<b>2010</b>
所僱用的海員人次 No. of employment of seafarers	50 485	59 640	68 880
解職的海員人次 No. of discharge of seafarers	49 077	58 140	64 560

註釋： (1) 數字包括在香港以外地方註冊的海員。

Note: (1) The figures include seafarers registered outside Hong Kong.

資料來源： (A) – (E) 海事處海員發證組  
(F) – (K) 海事處註冊及商船海員管理處

Data Sources: (A) – (E) Seafarers' Certification Section, Marine Department  
(F) – (K) Shipping Registry and Mercantile Marine Office, Marine Department

表 29  
TABLE 29

香港註冊船舶統計資料  
Statistics on Ships Registered in Hong Kong

A. 2009 和 2010 年年底的船舶數目和噸位  
Number of Ships and Tonnage as at end of 2009 and 2010

	船舶數目 No. of ships	淨噸位 <sup>(1)</sup> Net tonnage <sup>(1)</sup>	總噸位 <sup>(1)</sup> Gross tonnage <sup>(1)</sup>
(i) 2009 年 12 月 31 日船舶註冊概況 <sup>(2)</sup> On register as at 31.12.2009 <sup>(2)</sup>	1 496	24 867 454	44 904 042
(ii) 2010 年註冊的船舶 Ships Registered in the year of 2010	360	8 824 110	15 469 772
(iii) 2010 年取消註冊的船舶 Ships De-registered in the year of 2010	121	2 208 839	3 868 004
(iv) 2010 年 12 月 31 日船舶註冊概況 On register as at 31.12.2010	1 736	31 485 279	56 519 132

註釋： (1) 淨噸位及總噸位以每單位 100 立方呎計算。  
(2) 因部分註冊船舶於 2010 年更改噸位，故 (i) + (ii) - (iii) 並不等於 (iv)。

Notes: (1) Net and gross tonnages are in units of 100 cubic feet.  
(2) Due to alteration of tonnages of some ships already on register in 2010, (i) + (ii) - (iii) is not equal to (iv).

B. 按總噸位分析於 2010 年年底在香港註冊的船舶數目  
Ships Registered in Hong Kong by Gross Tonnage Distribution, as at end of 2010

總噸位分配 Gross Tonnage Distribution	船舶數目 No. of Ships
500 以下 Under 500	157
500 - 999	60
1 000 - 1 999	31
2 000 - 2 999	14
3 000 - 3 999	24
4 000 - 4 999	34
5 000 - 9 999	203
10 000 - 14 999	65
15 000 - 19 999	170
20 000 - 24 999	95
25 000 - 29 999	223
30 000 - 34 999	112
35 000 - 39 999	130
40 000 - 44 999	88
45 000 - 49 999	16
50 000 - 59 999	58
60 000 - 69 999	29
70 000 - 79 999	23
80 000 - 89 999	63
90 000 - 99 999	66
100 000 - 149 999	31
150 000 及以上 150 000 and above	44
<b>總計 Total</b>	<b>1 736</b>

表 29 – 續  
TABLE 29 – Cont'd

C. 按船隻種類分析於 2010 年度在香港註冊及取消註冊的船舶數目  
Ship Registered and De-registered in Hong Kong by Ship Type during 2010

註冊船隻種類 Type of Ship Registered	註冊船舶 Ship Registered		取消註冊船舶 Ship De-registered	
	船舶數目 No. of Ships	總噸位 Gross Tonnage	船舶數目 No. of Ships	總噸位 Gross Tonnage
散裝貨船 Bulk Carrier	173	8 292 215	59	2 313 264
化學品船 Chemical Tanker	5	38 652	4	38 564
集裝箱船 Container	45	2 631 850	17	744 355
氣體運輸船 Gas Carrier	5	105 480	1	3 901
雜貨船 General Cargo Ship	51	729 327	14	124 032
高速船 High Speed Craft	3	3 358	1	479
躉船 Lighter and Barge	4	80 758	3	46 246
油輪 Oil Tanker	51	2 521 306	14	558 790
沙石/雜貨/ 油輪 Ore/Bulk/ Oil Carrier	8	1 062 209	1	37 399
拖船 Tug	5	3 913	2	638
帆船/遊艇 Yacht	10	704	5	336
<b>總計 Total</b>	<b>360</b>	<b>15 469 772</b>	<b>121</b>	<b>3 868 004</b>

資料來源： 海事處船舶註冊處  
Data Source: Shipping Registry, Marine Department

表 30  
TABLE 30

政府船隊統計資料  
Government Fleet Statistics

	項目	Items	2009	2010
1.	開支預算總額 <sup>(1)</sup> (百萬元)	Total expenditure estimate <sup>(1)</sup> (\$M)	397.3	390.8 <sup>(2)</sup>
2.	截至 12 月 31 日的政府船隊科員工總數 (包括船員)	Total no. of GFD staff (including crew) as at 31 <sup>st</sup> December	529	516
3.	(i) 建成及交收的政府新船	(i) Government new vessels built and delivered	69	40
	(ii) 建造中的政府新船	(ii) Government new vessels under construction	13	6
	(iii) 已完成的政府新船計劃	(iii) Government new vessel projects completed	19	10
	(iv) 正進行中的政府新船計劃	(iv) Government new vessel projects in progress	5	5
4.	新船招標/報價	Tenders/Quotations called for new vessels	13	11
5.	新船合約	Contracts awarded for new vessels	14	10
6.	已完成的合約及購買規格書	Contracts and procurements specifications completed	27	21
7.	(i) 政府船舶總數	(i) Total number of vessels	795	791
	a. 大型機動船舶	a. major mechanized vessels	101	96
	b. 大型高速船	b. high speed craft (large-type)	15	15
	c. 其他雜類型船舶	c. other miscellaneous-class vessels	679	680
	(ii) 配備海事處人員的政府船舶	(ii) Government craft manned by Marine Department (MD)	45	43
	(iii) 海事處可供調配船員的時數率 (%)	(iii) MD crew staff time available for deployment (%)	86.6	87.4
	(iv) 已處理報廢的政府船舶	(iv) Government craft disposed	61	44
8.	(i) 大型機動船舶及高速船的可提供使用率	(i) Availability of major mechanized vessels and high speed craft (large-type) (%)	86.4	87.5
	(ii) 大型機動船舶及高速船的平均數目	(ii) Average number of major mechanized vessels and high speed craft (large-type)	117.2	113
	(iii) 船舶維修後首次試航成功率	(iii) Vessel seatrial successful rate in first attempt after repair maintenance service (%)	93.6	89
	(iv) 政府船隊維修保養服務使用者滿意率 (%)	(iv) Users satisfactory level on Government fleet repair maintenance service (%)	99.1	98.9
9.	大型機動船舶及高速船(包括它們的機動子艇)保養費總額 <sup>(1)</sup> (百萬元)	Total maintenance cost of major mechanized vessels and high speed craft (large-type) (including their mechanized daughter boats) <sup>(1)</sup> (\$M)	138.4	133.7
10.	大型機動船舶及高速船(包括它們的機動子艇)平均保養費 <sup>(1)</sup> (百萬元)	Average maintenance cost of major mechanized vessels and high speed craft (large-type) (including their mechanized daughter boats) <sup>(1)</sup> (\$M)	1.2	1.2
11.	(i) 船舶維修定期保養合約安排總數	(i) Total number of vessel maintenance term contract (TC) arrangements	30	42
	a. 根據合約保養的船舶的數目	a. Number of vessels maintained under TC	106	107
	b. 根據合約保養的主機的數目	b. Number of main engines repaired under TC	207	231
	(ii) 採購機械零件的定期合約數目	(ii) Number of TC for procurement of machinery spare parts	16	15
12.	配備海事處人員的政府船舶肇事個案	Accidents involving Government Craft manned by MD		
	(i) 肇事政府船舶個案數目	(i) Number of government vessels involved	7	10
	(ii) 工傷意外傷亡數目	(ii) Number of casualties in industrial accidents		
	a. 船塢員工	a. Dockyard staff	7	6
	b. 船員	b. Crew	5	13
13.	參加職業安全及健康課程的政府船塢人員人數	Number of Attendees of Government Dockyard to Occupational Safety and Health (OSH) training courses		
	(i) 職業安全健康局舉辦課程	(i) Organized by the OSH Council	32	35
	(ii) 政府船隊科工業安全組舉辦的課程	(ii) Organized by the Industrial Safety Section, GFD	84	61
	(iii) 其他職安健課程	(iii) Other OSH courses	119	113

註釋： (1) 指財政年度內的數字 (由本年四月一日至下年三月三十一日)。

(2) 估計數字

Notes: (1) Refer to financial year figures (i.e. from 1 April of current year to 31 March of next year).

(2) Estimated figures

表 31  
TABLE 31

政府船舶所屬部門及可用率情況 (2010 年 12 月 31 日)  
Departmental Ownership and Availabilities of Government Vessels (as at 31 December 2010)

船舶類型 Vessel Type	所屬部門 Ownership														總計 Total
	AFCD 漁農自然護理署	AMS 醫療輔助隊	CAS 民衆安全服務處	CEDD 土木工程拓展署	CSD 懲教署	C&ED 香港海關	EPD 環境保護署	FSD 消防處	DH 衛生署	HKPF 香港警務處	Imm D 入境事務處	LCSD 康樂及文化事務署	MD 海事處	WSD 水務署	
機動子艇及泳灘艇 Mechanized Daughter Boats & Beach Craft	-	-	-	-	-	7	-	9	-	28	-	130	2	-	176
浮橋物/泳灘浮台及浮筏 Floating Bridge Structure/Beach Platform & Rafts	-	-	-	-	-	-	-	-	-	-	-	341	-	-	341
機動及非機動充氣式橡皮艇 Mechanized and Non-mechanized Inflatable Boats	4	1	11	-	-	1	1	13	-	11	-	-	-	2	44
駁船 Lighters	-	-	-	-	-	-	-	1	-	6	-	-	22	-	29
小型機動船及小艇 Minor Mechanized Vessels & Dinghies	9	-	2	-	-	-	-	3	-	11	-	-	6	4	35
大型機動船舶 Major Mechanized Vessels	3	-	-	3	2	7	1	9	1	36	7	-	27	-	96
大型高速船 High Speed Craft (large type)	-	-	-	-	-	4	-	-	-	11	-	-	-	-	15
中型高速船 High Speed Craft (medium type)	8	-	-	-	-	2	-	2	-	38	-	-	5	-	55
<b>總計 Total</b>	<b>24</b>	<b>1</b>	<b>13</b>	<b>3</b>	<b>2</b>	<b>21</b>	<b>2</b>	<b>37</b>	<b>1</b>	<b>141</b>	<b>7</b>	<b>471</b>	<b>62</b>	<b>6</b>	<b>791</b>
大型機動船及高速船平均可提供使用率 Average Availability of Major Mechanized Vessels & High Speed Craft (large-type) (%)	90.4	-	-	89.3	92.1	84.9	92.0	82.7	89.7	87.2	88.6	-	89.1	-	87.5

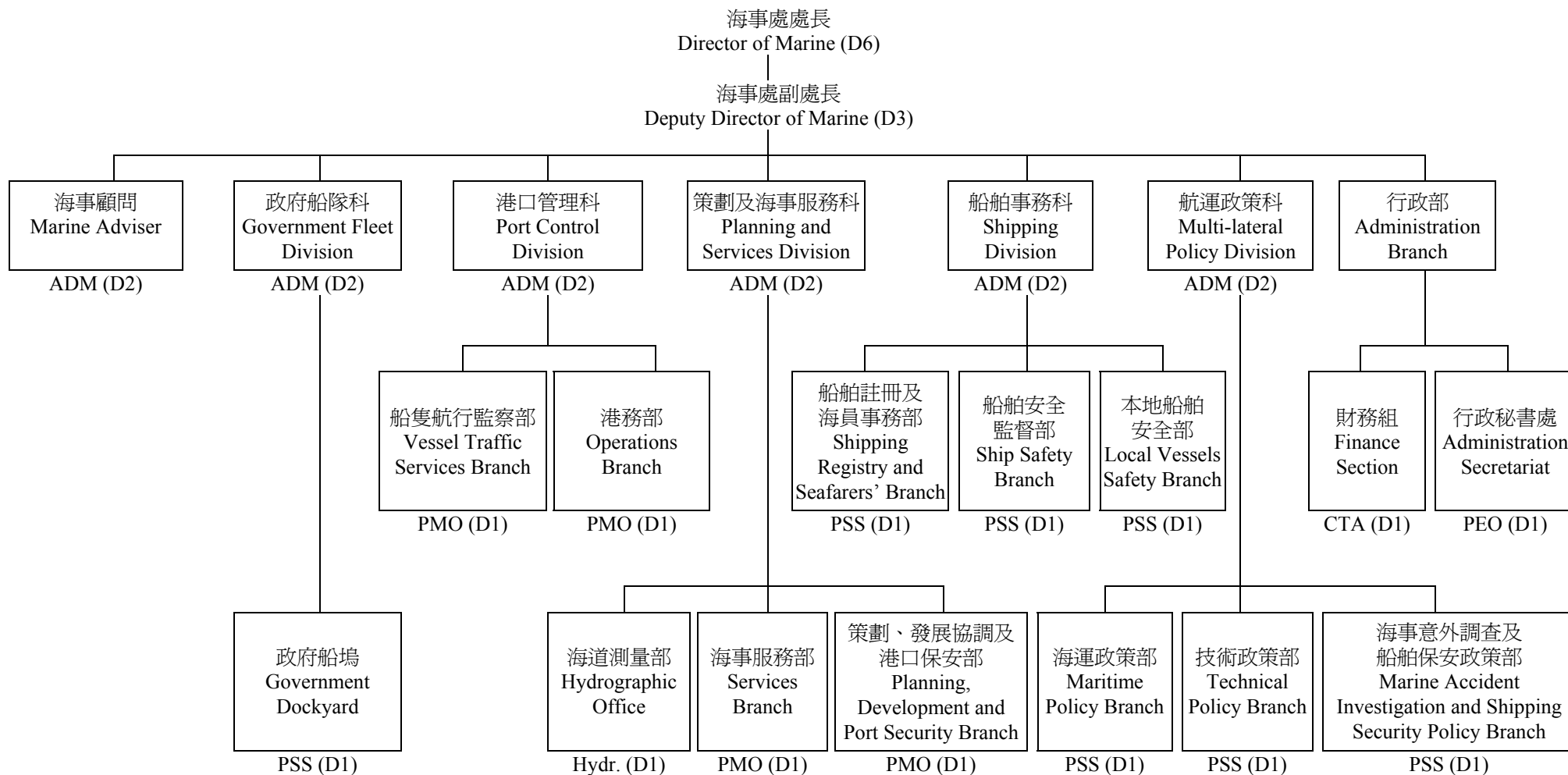
資料來源： 海事處政府船隊科  
Data Source: Government Fleet Division, MD

附錄

Appendices

附錄 A  
APPENDIX A

海事處組織架構圖  
Marine Department Organization Chart



圖例： ADM = 海事處助理處長 Assistant Director of Marine PEO = 首席行政主任 Principal Executive Officer  
 Legend: PMO = 首席海事主任 Principal Marine Officer CTA = 總庫務會計師 Chief Treasury Accountant  
 PSS = 首席驗船主任 Principal Surveyor of Ships D6 = 首長薪級第六點 (如此類推) Directorate Level 6 (and so on)  
 Hydr. = 海道測量師 Hydrographer

**附錄 B**  
**APPENDIX B**

**海事處的編制和實際員額 (截至 2010 年 12 月 31 日)**  
**Marine Department Establishment and Strength (as at 31 December 2010)**

<b>首長級人員</b> <b>Directorate Officers</b>		<b>編制</b> <b>Establishment</b>	<b>實際員額</b> <b>Strength</b>
海事處處長	Director of Marine (D6)	1	1
海事處副處長	Deputy Director of Marine (D3)	1	1
海事處助理處長	Assistant Director of Marine (D2)	6 +1 <sup>♦</sup>	7
首席海事主任	Principal Marine Officer (D1)	4	4
首席驗船主任	Principal Surveyor of Ships (D1)	7	7
首席行政主任	Principal Executive Officer (D1)	1	1
總庫務會計師	Chief Treasury Accountant (D1)	1	1
海道測量師	Hydrographer (D1)	1	1
<b>部門職系</b> <b>Departmental Grade</b>			
高級海事主任	Senior Marine Officer	18	18
海事主任	Marine Officer	39	31
海事監督	Marine Controller	13 +2 <sup>♦</sup>	13
助理海事監督	Assistant Marine Controller	42 +2 <sup>♦</sup>	37
高級船舶安全主任	Senior Shipping Safety Officer	1	1
船舶安全主任	Shipping Safety Officer	6	6
高級驗船主任	Senior Surveyor of Ships	16	16
驗船主任	Surveyor of Ships	29 +1 <sup>♦</sup>	25
高級助理船務主任	Senior Assistant Shipping Master	22	19
助理船務主任	Assistant Shipping Master	1	1
一級海事督察	Marine Inspector I	94 +2 <sup>♦</sup>	96
二級海事督察	Marine Inspector II	100 +1 <sup>♦</sup>	99
輔航設備監督	Superintendent of Aids to Navigation	1	1
助理輔航設備監督	Assistant Superintendent of Aids to Navigation	2	2
總驗船督察	Chief Ship Inspector	2	2
高級驗船督察	Senior Ship Inspector	11	11
驗船督察	Ship Inspector	21	19
助理驗船督察	Assistant Ship Inspector	8	7

附錄 B - 續  
APPENDIX B - Cont'd

部門職系 Departmental Grade		編制 Establishment	實際員額 Strength
小輪船員督導員	Launch Crew Supervisor	3 +1 <sup>♦</sup>	3
高級小輪船長	Senior Launch Master	61 +2 <sup>♦</sup>	55
小輪船長	Launch Master	48 +1 <sup>♦</sup>	40
小輪助理員	Launch Assistant	221 +1 <sup>♦</sup>	191
小輪大傷	Launch Mechanic	1	1
海事工業安全督察	Marine Industrial Safety Inspector	1	0
<b>一般職系 General Grade</b>			
高級統計師	Senior Statistician	1	1
一級統計主任	Statistical Officer I	1	1
二級統計主任/ 見習統計主任	Statistical Officer II/ Student Statistical Officer	3	2
系統經理	Systems Manager	1	1
一級系統分析/ 程序編製主任	Analyst/Programmer I	4	3
二級系統分析/ 程序編製主任	Analyst/Programmer II	5	2
高級庫務會計師	Senior Treasury Accountant	1	1
庫務會計師	Treasury Accountant	3	2
高級會計主任	Senior Accounting Officer	1	1
一級會計主任	Accounting Officer I	1	1
二級會計主任	Accounting Officer II	3	3
總行政主任	Chief Executive Officer	1	1
高級行政主任	Senior Executive Officer	2	1
一級行政主任	Executive Officer I	7	5
二級行政主任	Executive Officer II	4	6
高級法定語文主任	Senior Official Languages Officer	1	1
一級法定語文主任	Official Languages Officer I	2	2
二級法定語文主任	Official Languages Officer II	2	2

附錄 B - 續  
APPENDIX B - Cont'd

一般職系 General Grade		編制 Establishment	實際員額 Strength
高級電子工程師	Senior Electronics Engineer	1	1
電子工程師/ 助理電子工程師	Electronics Engineer/ Assistant Electronics Engineer	2	2
土地測量師/ 助理土地測量師	Land Surveyor/ Assistant Land Surveyor	2	2
電子督察	Electronics Inspector	1	1
助理空氣調節督察	Assistant Air-Conditioning Inspector	1	1
首席測量主任 (工程)	Principal Survey Officer (Engineering)	1	1
高級測量主任 (工程)	Senior Survey Officer (Engineering)	4	4
測量主任 (工程)/ 見習測量主任 (工程)	Survey Officer (Engineering)/ Survey Officer Trainee (Engineering)	11	11
首席技術主任 (製圖)	Principal Technical Officer (Cartographic)	1	1
高級技術主任 (製圖)	Senior Technical Officer (Cartographic)	3	3
技術主任 (製圖)/ 見習技術主任 (製圖)	Technical Officer (Cartographic)/ Technical Officer Trainee (Cartographer)	5	5
高級文書主任	Senior Clerical Officer	6 +1 <sup>♦</sup>	6
文書主任	Clerical Officer	28	27
助理文書主任	Assistant Clerical Officer	67 +2 <sup>♦</sup>	69
文書助理	Clerical Assistant	115	112
辦公室助理員	Office Assistant	8	6
高級物料供應主任	Senior Supplies Officer	1	1
物料供應主任	Supplies Officer	1	1
助理物料供應主任	Assistant Supplies Officer	1	1
高級物料供應員	Senior Supplies Supervisor	1	0
一級物料供應員	Supplies Supervisor I	2	2
二級物料供應員	Supplies Supervisor II	11	12
助理物料供應員	Supplies Assistant	3	3
物料供應服務員	Supplies Attendant	2	2
高級私人秘書	Senior Personal Secretary	1	1
一級私人秘書	Personal Secretary I	6	6
二級私人秘書	Personal Secretary II	19 +1 <sup>♦</sup>	18

附錄 B - 續  
APPENDIX B - Cont'd

一般職系 General Grade		編制 Establishment	實際員額 Strength
打字督導	Supervisor of Typing Services	1	1
機密檔案室助理	Confidential Assistant	1	1
繕校員	Calligraphist	2	2
打字員	Typist	5	5
汽車司機	Motor Driver	4	4
<b>共通職系 Common Grade</b>			
總技術主任	Chief Technical Officer	2	2
高級電氣督察	Senior Electrical Inspector	2	2
電氣督察	Electrical Inspector	4	3
助理電氣督察	Assistant Electrical Inspector	2	2
高級機械督察	Senior Mechanical Inspector	7	6
機械督察	Mechanical Inspector	10	10
助理機械督察	Assistant Mechanical Inspector	5	6
一級監工	Works Supervisor I	12 +2 <sup>♦</sup>	11
二級監工	Works Supervisor II	7	6
高級技工	Senior Artisan	40	35
技工	Artisan	96 +2 <sup>♦</sup>	68
丈量員	Chainman	4	4
產業看管員	Property Attendant	3	2
二級工人	Workman II	33	30
<b>總計</b>	<b>Total</b>	<b>1 392</b>	<b>1 252</b>

♦ 編外職位

♦ Supernumerary post

**附錄 C**  
**APPENDIX C**

**2010 年海事處訓練組舉辦的課程**  
**Training Courses Conducted by Training Section, Marine Department in 2010**

	課程名稱 Course Title	學期 Duration	參加學員 * Target Participants *	班級數目 Number of Classes	學員數目 Number of Participants
1.	電子海圖顯示及資料系統基本課程 ECDIS Basic Course	1 day	MI II	3	17
2.	搜尋現場協調員課程 On Scene Co-ordinator Course	5 days	MO, MI I, Marpol, GFS, FSD	2	22
3.	船舶交通服務研討會 / 工作坊 VTS Seminar/Workshop	1 day	MC, AMC	7	48
4.	海上油污訓練課程 Oil Pollution Course	1 day	LCSD	2	39
5.	民安隊海上油污訓練課程 CAS Oil Pollution Course	2 days	CAS	1	19
6.	一級海事督察深造課程 Marine Inspector I Enhancement Course	25 days	SASM, MI I	1	8
7.	香港水域雷達操作員課程 Radar Operator Course for Hong Kong Waters	7 days	LM, C&E, FSD, Marpol	2	16
8.	香港水域自動雷達標繪儀和高速船雷達課程 ARPA and High Speed Craft Radar Course for Hong Kong Waters	3 days	Marpol, C&E	1	8
9.	基本小型船舶操縱技術課程 Basic Boat Handling Skills Course	5 days	LM, C&E, FSD	2	12
10.	海事督察訓練課程 - 甲部 MI Training Course – Part A	30 days	MI II	1	24
11.	海事督察訓練課程 - 乙部 Marine Inspector Training Course – Part B	50 days	MI II	1	12
12.	領港員模擬船操縱課程 Pilotage Simulation Course	2 days	HKPA (A)	2	4
13.	船舶交通服務操作員深造課程 - 海外人士 VTS Operator Enhancement Course – Overseas	10 days	CHI(VTS)	1	6
14.	船舶交通服務監督員課程 VTS Supervisor Training Course	2 days	AMC	1	4
15.	船舶交通服務重新生效課程 VTS Revalidation Course	2 days	AMC	1	1
16.	船舶交通服務監督員增強課程 VTS Enhancement Course for Supervisor	1 day	MC	3	10
17.	全球海上遇險及安全系統 (通用操作員證書 - 縮 短課程) GMDSS (General Operator's Certificate - Abridged Course)	11 days	SMO, MO, OFTA	1	6
18.	全球海上遇險及安全系統 (限用操作員證書課程) GMDSS (Restricted Operator's Certificate Course)	5 days	MI II	1	6
19.	海事教育研討會 / 工作坊 Education Seminar / Workshop	1 day	SMO, MO, MC, MI II, PCCW	3	57
<b>總計</b> <b>Total</b>				<b>36</b>	<b>319</b>

**附錄 C – 續**  
**APPENDIX C – Cont'd**

\*參加海事處在二零一零年舉辦的訓練課程的機構及職位：

\*List of Organisations/Posts Participated in the Training Courses Conducted by Marine Department in 2010:

<b>機構</b>	<b>Organisations</b>	<b>縮寫 Abbreviation</b>
香港海關	Customs and Excise Department	C&E
民眾安全服務處	Civil Aid Service	CAS
中國(船隻航行服務)官員	Chinese (VTS) Personnel	CHI (VTS)
消防處	Fire Services Department	FSD
政府飛行服務隊	Government Flying Service	GFS
香港領港會 (見習領港員)	Hong Kong Pilot Association (Apprentice Pilots)	HKPA(A)
香港水警	Marine Police	Marpol
康樂文化事務處	Leisure, Culture Services Department	LCSD
香港電訊管理局	Office of Telecommunication Authority	OFTA
電訊盈科	Pacific Century Cyber Works	PCCW

<b>職位</b>	<b>Posts</b>	<b>縮寫 Abbreviation</b>
助理海事監督	Assistant Marine Controller	AMC
小輪船長	Launch Master	LM
海事監督	Marine Controller	MC
一級海事督察	Marine Inspector I	MI I
二級海事督察	Marine Inspector II	MI II
海事主任	Marine Officer	MO
高級助理船務主任	Senior Assistant Shipping Master	SASM
高級海事主任	Senior Marine Officer	SMO

**附錄 D**  
**APPENDIX D**

**2010 年海事處訪客**  
**Visitors of the Marine Department, 2010**

本處於 2010 年接待了以下訪客：

During the year of 2010, the Department hosted the following visitors:

編號 No.	訪問日期 Date of Visit	機構/代表 Organization/Representative
1.	18.01.2010	美國伍斯特理工學院及創建香港（維港遊 – 乘坐 Laissez Faire No.22） Worcester Polytechnic Institute, USA, together with Designing Hong Kong (Harbour Tour – on Laissez Faire No.22)
2.	25.01.2010	美國伍斯特理工學院 Worcester Polytechnic Institute, USA
3.	26.01.2010	卡塔爾民防部隊 Qatar Civil Defence Force
4.	27.01.2010	中國海事局 China Maritime Safety Administration
5.	28.01.2010	香港理工大學機械工程學系 Department of Mechanical Engineering, The Hong Kong Polytechnic University
6.	29.01.2010	新加坡海事及港務管理局 Maritime and Port Authority of Singapore
7.	05.02.2010	MOBILIS 浮標（亞洲）有限公司 MOBILIS BUOYS Asia Ltd.
8.	09.02.2010	英國海道測量局首席行政官 CEO of the UK Hydrographic Office
9.	09.02.2010	上海海事大學 Shanghai Maritime University
10.	22.02.2010	香港水警（由水警總區指揮官率領） Hong Kong Marine Police (led by Regional Commander)
11.	10.03.2010	民航處 Civil Aviation Department
12.	11.03.2010	奧斯陸港口代表團 Delegation from the Port of Oslo
13.	12.03.2010	電訊盈科有限公司 PCCW Limited
14.	15.03.2010	第三屆香港船舶金融及投資論壇 3 <sup>rd</sup> Annual Hong Kong Ship Finance & Investment Forum
15.	16.03.2010	國際海上保險聯盟 International Union of Marine Insurance
16.	19.03.2010	上海福星航科信息科技有限公司（羅凱姆） Shanghai Fuxing Navigation Digital Technology Co., Ltd (Rokem)
17.	26.03.2010	國際海上人命救助聯盟（由夏禮文律師行人員陪同） International Maritime Rescue Federation (accompanied by staff of Holman Fenwick Willan)

**附錄 D – 續**  
**APPENDIX D – Cont'd**

本處於 2010 年接待了以下訪客：

During the year of 2010, the Department hosted the following visitors:

編號 No.	訪問日期 Date of Visit	機構/代表 Organization/Representative
18.	26.03.2010	勞合社 35 歲以下海事保險從業員羣組 Lloyd's Marine Under 35's Insurance Group
19.	31.03.2010	泰國海軍官員（由泰國駐港領事館人員陪同） Thai naval officers (accompanied by staff of Thailand Consulate-General Hong Kong)
20.	01.04.2010	國家發展和改革委員會綜合運輸研究所粵港澳基礎設施建設合作專項規劃研究小組（調研計劃座談會） Research Group on the Guangdong-Hong Kong-Macao Regional Co-operation Plan on Infrastructure Construction, the Institute of Comprehensive Transportation Research of the National Development and Reform Commission (Seminar)
21.	12.04.2010	天津港東疆保稅港區管理委員會及天津海事局（調研航運業的發展趨勢及運作情況） Tianjin East Port Customs Bonded Zone Administrative Committee and the Tianjin Maritime Safety Administration (research study on trends and operation of the marine industry)
22.	15.04.2010	荷蘭德勤港口服務 Deloitte Port Services, the Netherlands
23.	19.04.2010	新西蘭海軍官員（由駐港領事館人員陪同） New Zealand naval officers (accompanied by staff of Consulate-General Hong Kong)
24.	21.04.2010	新加坡 Universal Energy Pte Ltd Universal Energy Pte Ltd, Singapore
25.	23.04.2010	美國船級社 American Bureau of Shipping
26.	28.04.2010	海南省海防與口岸辦 Hainan Coast Defence and Port Office
27.	04.05.2010	瑞典查爾摩斯工學院碩士生 MSc students from Chalmers University of Technology, Sweden
28.	12.05.2010	信德中旅船務管理有限公司 Shun Tak-China Travel Ship Management Limited
29.	13.05.2010 – 14.05.2010	廣東海事局航標處 Department of Aids to Navigation, Guangdong Maritime Safety Administration
30.	26.05.2010	香港人類工效學學會 The Hong Kong Ergonomics Society
31.	26.05.2010	科特迪瓦共和國經濟基礎建設部部長代表 Representative of Minister of Economic Infrastructures of the Republic of Cote d'Ivoire
32.	31.05.2010	拉脫維亞里加港口管理局 Riga Port Authority, Latvia
33.	01.06.2010	美國威斯康星大學密爾沃基分校行政人員工商管理碩士學生 EMBA students from the University of Wisconsin - Milwaukee, USA

附錄 D – 續  
APPENDIX D – Cont'd

本處於 2010 年接待了以下訪客：

During the year of 2010, the Department hosted the following visitors:

編號 No.	訪問日期 Date of Visit	機構/代表 Organization/Representative
34.	04.06.2010	加拿大交通部 Transport Canada
35.	25.06.2010	香港理工大學 The Hong Kong Polytechnic University
36.	05.07.2010, 23.07.2010 & 30.07.2010	海事訓練學院 (了解危險貨物小組的工作) Maritime Services Training Institute (familiarization with Dangerous Goods Unit)
37.	08.07.2010 & 29.07.2010	海事訓練學院 (了解檢控小組的工作) Maritime Services Training Institute (familiarization with Prosecution Unit)
38.	16.07.2010	韓國海事大學海事科學學院院長 Dean, College of Maritime Sciences, Korea Maritime University
39.	27.07.2010	英國海道測量局首席行政官 CEO of the UK Hydrographic Office
40.	13.08.2010	李均頤區議員辦事處 Office of District Councillor LEE Kwun-ye, Kenny
41.	16.08.2010	明報校園記者 Ming Pao Student Reporters
42.	30.08.2010 – 10.09.2010	加拿大交通部 (港口國監督檢查員交流) Transport Canada (Port State Control Officer Exchange)
43.	31.08.2010	美國駐香港總領事館 US Consulate-General Hong Kong
44.	10.09.2010	荷蘭交通部部長及代表團 Delegation led by the Minister of Transport of the Netherlands
45.	10.09.2010	荷蘭商貿代表團 Netherlands Trade Mission
46.	14.09.2010	越南發展策略研究所 Development Strategy Institute of Vietnam
47.	27.09.2010 – 30.09.2010	深圳海事局 (港口國監督檢查員交流) Shenzhen Maritime Safety Administration (Port State Control Officer Exchange)
48.	04.10.2010	英國海道測量師 UK Hydrographer
49.	06.10.2010	馬來西亞瑪拉工藝大學 MARA University of Technology, Malaysia
50.	09.10.2010	澳門特殊奧運會會員 Members of Macao Special Olympics
51.	15.10.2010	墨西哥米卻肯州政府經濟發展委員會 Secretariat of Economic Development of the Government of the State of Michoacán, Mexico

**附錄 D – 續**  
**APPENDIX D – Cont'd**

本處於 2010 年接待了以下訪客：

During the year of 2010, the Department hosted the following visitors:

編號 No.	訪問日期 Date of Visit	機構/代表 Organization/Representative
52.	15.10.2010	墨西哥拉薩羅卡德納斯港口管理部門商務經理 Commercial Manager of the Mexican Lazaro Cardenas Port Administration
53.	25.10.2010	Shoreline 公司及 Arvak 公司的管理層 Directors of Shoreline and Arvak
54.	28.10.2010	香港海關 Customs and Excise Department
55.	28.10.2010	廣東海關 Guangdong Customs
56.	03.11.2010	港口衛生處 Port Health Office
57.	03.11.2010	司法機構政務處 Judiciary Administration
58.	22.11.2010 – 24.11.2010	越南交通運輸部代表團 Delegation from the Ministry of Transport, Vietnam
59.	24.11.2010	廣州船舶及海洋工程設計研究院 Guangzhou Marine Engineering Corporation
60.	26.11.2010	廣東造船工程學會 Guangdong SNAME
61.	26.11.2010	新加坡民防部隊 Singapore Civil Defence Force
62.	30.11.2010	香港保險業聯會 Hong Kong Federation of Insurers
63.	30.11.2010	越南發展策略研究所 Development Strategy Institute of Vietnam
64.	30.11.2010	香港海事保險協會 Marine Insurance Association of Hong Kong
65.	10.12.2010	青島海洋研究設備服務有限公司 China – O.R.E.S Ltd.
66.	16.12.2010	巴西國內水運委員會代表團 Brazilian National Agency for Waterway Transportation Mission
67.	23.12.2010	越南海上搜救協調中心代表團 Delegation from the Vietnam Maritime Search and Rescue Co-ordination Centre

**附錄 E**  
**APPENDIX E**

**2010 年新訂海事法例**  
**New Maritime Legislation, 2010**

二零一零年一月一日至二零一零年十二月三十一日期間通過的海事及航運法例列載如下：  
The following maritime and shipping legislation was enacted during the year under review  
(1.1.2010 –31.12.2010):

法例名稱 Title	法例編號 L.N. No.
2010 年商船(本地船隻)(避風塘)規例(修訂附表)公告 Merchant Shipping (Local Vessels) (Typhoon Shelters) Regulation (Amendment of Schedule) notice 2010	66 (20.5.2010)

**附錄 F**  
**APPENDIX F**

**2010 年輔航設備**  
**Aids to Navigation, 2010**

**A. 使用中的輔航設備**

**AIDS TO NAVIGATION IN USE**

	輔航設備 AIDS TO NAVIGATION	截至 2010 年 12 月 31 日 as at 31.12.2010
1.	燈浮標 Lighted Buoy	121
2.	燈航標 Lighted Beacon	422
3.	雷達應答標 Racon	1
4.	霧角 Fog Horn	7

**B. 本年新設的輔航裝置**

**NEW AIDS ESTABLISHED DURING THE YEAR**

1.	PH 9 PH 9	一個以太陽能操作的新燈浮標於 4 月 1 日設立，用以標示香港國際機場航道區西北面界線。已往這是海港巡邏組負責保養的。 A solar power operated light buoy was established on 1-4-2010 to mark the northwestern boundary of the Hong Kong International Airport. Formerly, it was under the jurisdiction of HPS.
2.	氣象 8 Weather 8	一個以太陽能操作的新氣象燈浮標於 5 月 11 日設立在香港國際機場以東，用以收集氣象和水流數據。 A solar power operated weather buoy was established on 11-5-2010 to the East of Hong Kong International Airport for collecting weather and current data.
3.	長洲海傍北 Cheung Chau Praya N	一個以太陽能操作的新燈航標於 7 月 2 日設立，用以標示長洲海傍。已往這是機電工程署負責保養的。 A solar power operated light was established on 2-7-2010 to mark the Cheung Chau Praya. Formerly, it was under the jurisdiction of EMSD.
4.	長洲海傍南 Cheung Chau Praya S	一個以太陽能操作的新燈航標於 7 月 2 日設立，用以標示長洲海傍。已往這是機電工程署負責保養的。 A solar power operated light was established on 2-7-2010 to mark the Cheung Chau Praya. Formerly, it was under the jurisdiction of EMSD.
5.	海軍基地 Naval Base	一個以太陽能操作的新燈浮標於 12 月 14 日設立，用以標示昂船洲海軍港池限制區域的西南端。 A solar power operated light buoy was established on 14-12-2010 to mark the southwest extremity of the Ngong Shuen Chau Naval Basin restricted area.

**C. 本年拆除的輔航裝置**

**AIDS DISCONTINUED DURING THE YEAR**

1.	氣象 6 Weather 6	這個燈浮於 4 月 16 日永久終止服務。 The lighted buoy was permanently withdrawn from service on 16-4-2010.
2.	沙洲 1 Sha Chau 1	這個燈浮於 5 月 13 日永久終止服務。 The lighted buoy was permanently withdrawn from service on 13-5-2010.

附錄 F – 續  
APPENDIX F – Cont'd

**D. 本年遭損毀的輔航裝置  
AIDS DAMAGED DURING THE YEAR**

下列燈浮標遭損毀，航標燈熄滅。  
The lighted buoys listed below were damaged and unlit.

月份 Month	名稱	Name
1 月 January	沙龍 A	SLMP A
3 月 March	北航 3	Northern 3
4 月 April	繫泊浮泡 A43	Mooring Buoy A43
5 月 May	藍塘 4	TCS 4
	北航 3	Northern 3
6 月 June	北航 2	Northern 2
	西檢	W Q
8 月 August	青洲	Green Island
	后海灣 E	Deep Bay E
11 月 November	藍塘 3	TCS3
	繫泊浮泡 A43	Mooring Buoy A43
	沙龍 C	SLMP C
12 月 December	南丫電力 2	P 2
	藍塘 1	TCS1

附錄 F – 續  
APPENDIX F – Cont'd

**E. 本年改進的輔航裝置  
AIDS REPROVISIONED DURING THE YEAR**

1. 下列燈航標已換上全新現代化器材，用以提高光達距離。  
The lighted beacons listed below were upgraded with modern equipment for better luminous range.

月份 Month	名稱	Name
1月 January	索罟灣新碼頭	Sok Kwu Wan New Pier
2月 February	土瓜灣 1	To Kwa Wan 1
	土瓜灣 2	To Kwa Wan 2
	土瓜灣 3	To Kwa Wan 3
	土瓜灣 4	To Kwa Wan 4
	企嶺下海碼頭	Kei Ling Ha Hoi Pier
3月 March	北長洲石	Adamasta Rock
	汲水門橋北紅	Kap Shui Mun Bridge North Red
	汲水門橋北綠	Kap Shui Mun Bridge North Green
	塔門漁民村碼頭	Tap Mun Fisherman's Village Pier
	布袋澳碼頭	Po Toi O Pier
	鳳坑碼頭	Fung Hang Pier
4月 April	長洲 D	Cheung Chau D
	黃竹角	Wong Chuk Kok
	汾流西灣碼頭	Fan Lau Sai Wan Pier
	汀九橋西紅	Ting Kau Bridge West Red
	汀九橋西綠	Ting Kau Bridge West Green
	汀九橋東紅	Ting Kau Bridge East Red
	汀九橋東綠	Ting Kau Bridge East Green
7月 July	香港仔南 1	Aberdeen South 1
	香港仔南 2	Aberdeen South 2
8月 August	澳仔	O Tsai
9月 September	東芝麻灣	East Chi Ma Wan
10月 October	長洲 1	Cheung Chau 1
	長洲 2	Cheung Chau 2
	長洲 3	Cheung Chau 3
	長洲 4	Cheung Chau 4
	長洲 5	Cheung Chau 5
	長洲 6	Cheung Chau 6
	中環 10 號碼頭	Central Pier 10
	柴灣 2	Chai Wan 2
	東涌橋 10	Tung Chung Bridge 10
	東涌橋 12	Tung Chung Bridge 12
	東涌橋 14	Tung Chung Bridge 14

**附錄 F – 續**  
**APPENDIX F – Cont'd**

**E. 本年改進的輔航裝置 (續)**

**AIDS REPROVISIONED DURING THE YEAR (Cont'd)**

月份 Month	名稱	Name
11 月 November	基準石	Datum Rock
12 月 December	東心淇碼頭	Tung Sam Kei Pier
	赤徑碼頭	Chek Keng Pier

2. 下列燈航標已換上全新現代化器材，用以提高其可靠性。  
The lighted beacons listed below were replaced with modern equipment for higher reliability.

月份 Month	名稱	Name
3 月 March	下徑碼頭	Ha Keng Pier
4 月 April	大浪石	Wave Rock
6 月 June	模達灣新碼頭	Mo Tat Wan New Pier
	索罟灣新碼頭	Sok Kwu Wan New Pier
	后海灣 E	Deep Bay E
	后海灣 F	Deep Bay F
7 月 July	蒲荅村碼頭	Po Toi Tsuen Pier
8 月 August	磡石灣碼頭	San Shek Wan Pier
	筲箕灣 D	Shau Kei Wan D
10 月 October	赤徑渡輪碼頭	Chek Keng Ferry Pier
	九龍公眾碼頭東	Kowloon Public Pier E
	九龍公眾碼頭西	Kowloon Public Pier W
11 月 November	筲箕灣 B	Shau Kei Wan B

附錄 F – 續  
APPENDIX F – Cont'd

E. 本年改進的輔航裝置 (續)

**AIDS REPROVISIONED DURING THE YEAR (Cont'd)**

3. 下列燈航標已更換太陽能電池，用以提高航標的可靠性。  
The solar batteries of the lighted beacons listed below were renewed in order to increase reliability.

月份 Month	名稱	Name
1 月 January	鹿洲村碼頭	Luk Chau Tsuen Pier
	礮石灣碼頭	San Shek Wan Pier
	索罟灣新碼頭	Sok Kwu Wan New Pier
	南鯉魚門	South Lei Yue Mun
	赤柱卜公碼頭	Stanley Blake Pier
2 月 February	黃花排	Wong Fa Pai
	土瓜灣 1	To Kwa Wan 1
	筲箕灣 3	Shau Kei Wan 3
	銅鑼灣 1	Causeway Bay 1
	銅鑼灣 4	Causeway Bay 4
	中港 2	CFT 2
	石牛洲	Shek Ngau Chau
3 月 March	下徑碼頭	Ha Keng Pier
	將軍澳 1	Tseung Kwan O 1
	西馬灣	West Ma Wan
	東龍洲碼頭	Tung Lung Chau Pier
	北長洲石	Adamasta Rock
	北角消防局西碼頭	North Point FSD West Pier
	流浮山	Lau Fau Shan
	醉酒灣 2	Rambler Channel 2
4 月 April	大浪石	Wave Rock
	長洲 D	Cheung Chau D
	汾流角	Fan Lau Kok
	汾流西灣碼頭	Fan Lau Sai Wan Pier
	中環 10 號碼頭	Central Pier 10
	大廟灣碼頭	Joss House Bay Pier
	將軍澳 2	Tseung Kwan O 2

**錄 F – 續**  
**APPENDIX F – Cont'd**

**E. 本年改進的輔航裝置 (續)**

**AIDS REPROVISIONED DURING THE YEAR (Cont'd)**

月份 Month	名稱	Name
5 月 May	喜靈洲 2	Hei Ling Chau 2
	喜靈洲 7	Hei Ling Chau 7
	大鴉洲	Tai A Chau
6 月 June	蒲苔碼頭	Po Toi Pier
	油麻地 3	Yau Ma Tei 3
7 月 July	流浮山	Lau Fau Shan
	西貢公眾碼頭東北	Sai Kung Public Pier NE
8 月 August	長洲 C	Cheung Chau C
	長洲 1	Cheung Chau 1
	塔門碼頭	Tap Mun Pier
9 月 September	大鴉洲	Tai A Chau
	圓角	Yuen Kok
	銀礦灣石	Silver Mine Bay Rock
	船灣 2	Shuen Wan 2
10 月 October	南堂尾	Tathong Point
	橫瀾	Waglan
	基準石	Datum Rock
11 月 November	石牛洲	Shek Ngau Chau
	白石角碼頭南	Pak Shek Kok Pier S
12 月 December	黃金海岸 1	Gold Coast 1
	早禾坑碼頭	Tso Wo Hang Pier

4. 下列燈航標的太陽能發電板數目已增加，用以提高航標的可靠性。  
The numbers of solar panel of the lighted beacons listed below were increased to enhance reliability.

月份 Month	名稱	Name
1 月 January	一尺排	One Foot Rock
9 月 September	醉酒灣	Rambler Channel

附錄 F – 續  
APPENDIX F – Cont'd

F. 輔航設備工場員工與輔航燈比例

RATIO OF STAFF OF AIDS TO NAVIGATION UNIT WORKSHOP TO AIDS

年份 Year	輔航設備工場員工 <sup>(1)</sup> Staff of Aids to Navigation Unit Workshop <sup>(1)</sup>		輔航燈 Aids		比例 Ratio
		(%)		(%)	
1990	34	(+9.7)	319	(+3.9)	9.4
1991	34	( 0 )	326	(+2.2)	9.6
1992	34	( 0 )	327	(+0.3)	9.6
1993	40	(+17.6)	356	(+8.9)	8.9
1994	40	( 0 )	375	(+5.3)	9.4
1995	37	(-7.5)	379	(+1.1)	10.2
1996	36	(-2.7)	380	(+0.3)	10.6
1997	32	(-11.1)	395	(+3.9)	12.3
1998	29	(-9.4)	432	(+9.4)	14.9
1999	27	(-6.9)	463	(+7.2)	17.1
2000	27	( 0 )	468	(+1.1)	17.3
2001	25	(-7.4)	482	(+3.0)	19.3
2002	27	(+8.0)	483	(+0.2)	17.9
2003	27	( 0 )	497	(+2.9)	18.4
2004	27	( 0 )	509	(+2.4)	18.9
2005	25	(-7.4)	518	(+1.8)	20.7
2006	23	(-8.0)	529	(+2.1)	23.0
2007	23	( 0 )	533	(+0.8)	23.2
2008	24	(+4.3)	536	(+0.6)	22.3
2009	23	(-4.2)	540	(+0.7)	23.5
2010	24	(+4.3)	543	(+0.6)	22.6

註釋： (1) 不包括負責在香港水域範圍內看管繫船設備/檢修浮泡的 4 位員工。

Note: (1) Excluding the four staff who are responsible for looking after the mooring facilities/overhaul of buoys within Hong Kong Waters.