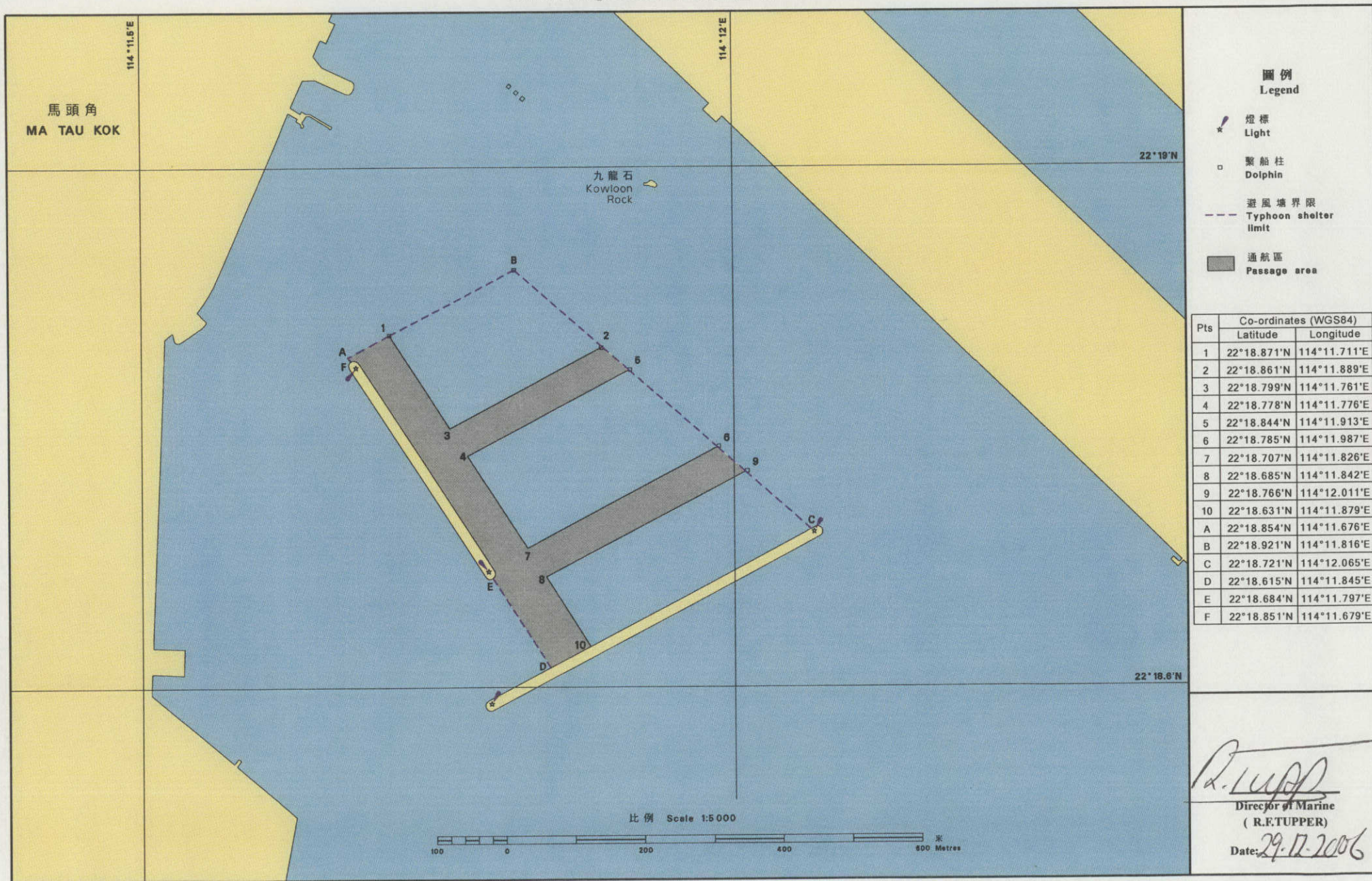


根據《商船(本地船隻)(避風塘)規例》(第548E章)第3條規定
 土瓜灣避風塘通航區圖則

Pursuant to Section 3 of the Merchant Shipping (Local Vessels) (Typhoon Shelters) Regulation (Cap. 548E)
 Plan of Passage Area in To Kwa Wan Typhoon Shelter



圖例 Legend

- 燈標 Light
- 繫船柱 Dolphin
- 避風塘界限 Typhoon shelter limit
- 通航區 Passage area

Pts	Co-ordinates (WGS84)	
	Latitude	Longitude
1	22°18.871'N	114°11.711'E
2	22°18.861'N	114°11.889'E
3	22°18.799'N	114°11.761'E
4	22°18.778'N	114°11.776'E
5	22°18.844'N	114°11.913'E
6	22°18.785'N	114°11.987'E
7	22°18.707'N	114°11.826'E
8	22°18.685'N	114°11.842'E
9	22°18.766'N	114°12.011'E
10	22°18.631'N	114°11.879'E
A	22°18.854'N	114°11.676'E
B	22°18.921'N	114°11.816'E
C	22°18.721'N	114°12.065'E
D	22°18.615'N	114°11.845'E
E	22°18.684'N	114°11.797'E
F	22°18.851'N	114°11.679'E

Director of Marine
 (R.F. TUPPER)
 Date: 29-12-2006