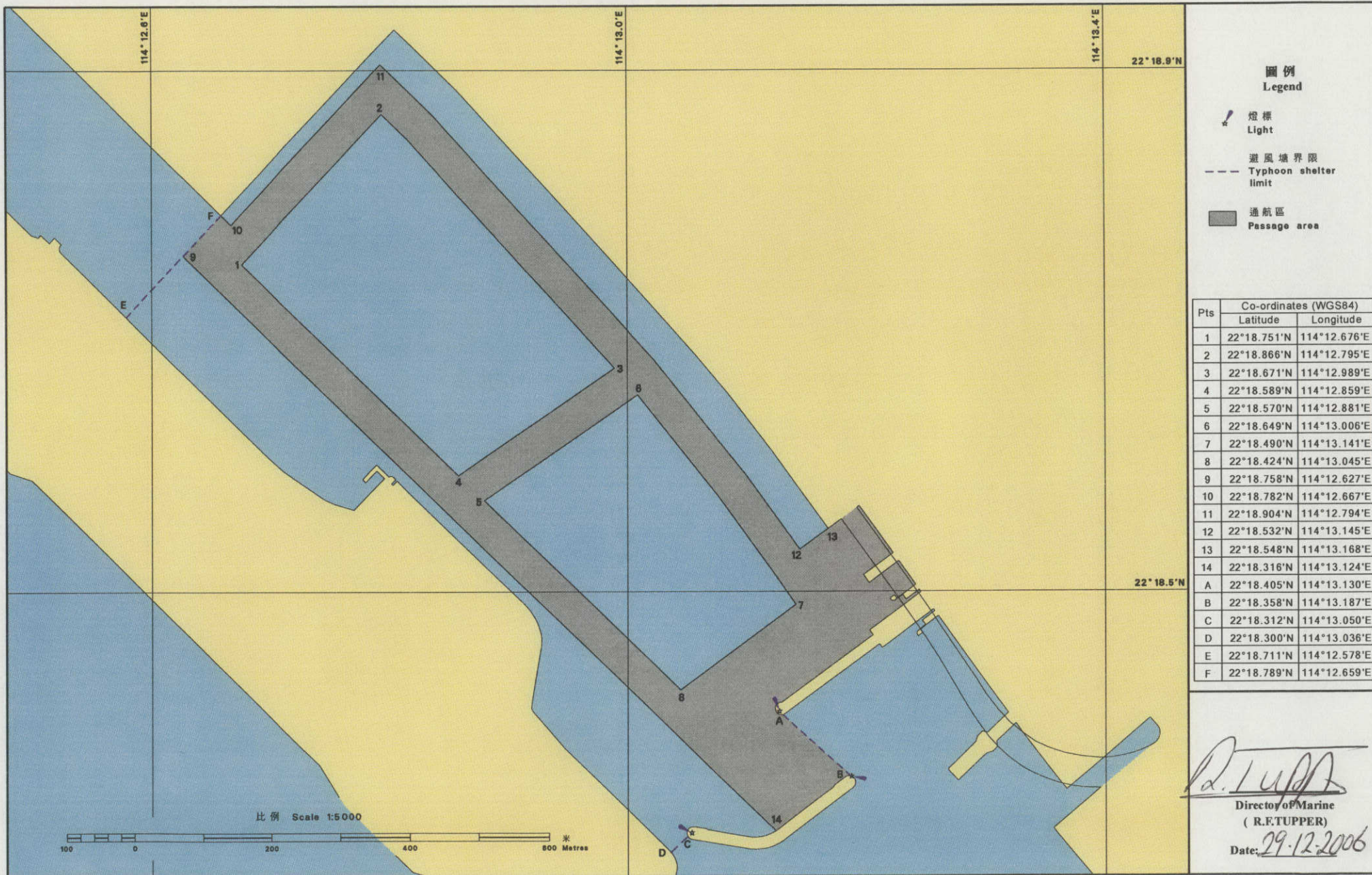


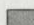


根據《商船(本地船隻)(避風塘)規例》(第548E章)第3條規定  
觀塘避風塘通航區圖則

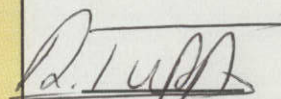
Pursuant to Section 3 of the Merchant Shipping (Local Vessels) (Typhoon Shelters) Regulation (Cap. 548E)  
Plan of Passage Area in Kwun Tong Typhoon Shelter



圖例  
Legend

-  燈標  
Light
-  避風塘界限  
Typhoon shelter limit
-  通航區  
Passage area

Pts	Co-ordinates (WGS84)	
	Latitude	Longitude
1	22°18.751'N	114°12.676'E
2	22°18.866'N	114°12.795'E
3	22°18.671'N	114°12.989'E
4	22°18.589'N	114°12.859'E
5	22°18.570'N	114°12.881'E
6	22°18.649'N	114°13.006'E
7	22°18.490'N	114°13.141'E
8	22°18.424'N	114°13.045'E
9	22°18.758'N	114°12.627'E
10	22°18.782'N	114°12.667'E
11	22°18.904'N	114°12.794'E
12	22°18.532'N	114°13.145'E
13	22°18.548'N	114°13.168'E
14	22°18.316'N	114°13.124'E
A	22°18.405'N	114°13.130'E
B	22°18.358'N	114°13.187'E
C	22°18.312'N	114°13.050'E
D	22°18.300'N	114°13.036'E
E	22°18.711'N	114°12.578'E
F	22°18.789'N	114°12.659'E

  
Director of Marine  
(R.F. TUPPER)  
Date: 29.12.2006