

**MARINE DEPARTMENT NOTICE NO. 115 OF 2010**

(Marine Works)

**Marine Site Investigation off Peng Chau, Sunshine Island and Hei Ling Chau**

With immediate effect and for a period of approximately 13 weeks, marine site investigation works involving drilling of boreholes will be carried out at the following locations (WGS 84 Datum) from (A) to (I):

(A)	22° 16.717' N	114° 02.886' E
(B)	22° 16.513' N	114° 02.721' E
(C)	22° 16.468' N	114° 03.001' E
(D)	22° 16.260' N	114° 02.825' E
(E)	22° 16.219' N	114° 03.116' E
(F)	22° 15.827' N	114° 03.436' E
(G)	22° 15.767' N	114° 02.877' E
(H)	22° 15.663' N	114° 02.718' E
(I)	22° 15.444' N	114° 02.727' E

2. Two flat top barges will carry out the works. They will change their locations from time to time to suit operational requirements. One tug will provide assistance.

3. A working area of approximately 80 metres will be established around each barge. Yellow marker buoys fitted with yellow flashing lights will be laid to mark the positions of the anchors extending from each barge.

4. The hours of work will be from 0700 to 1900 hours. The vessels employed for the works will stay at the works locations outside the hours of work.

5. Vessels engaged in the operations will display signals as prescribed in international and local regulations.

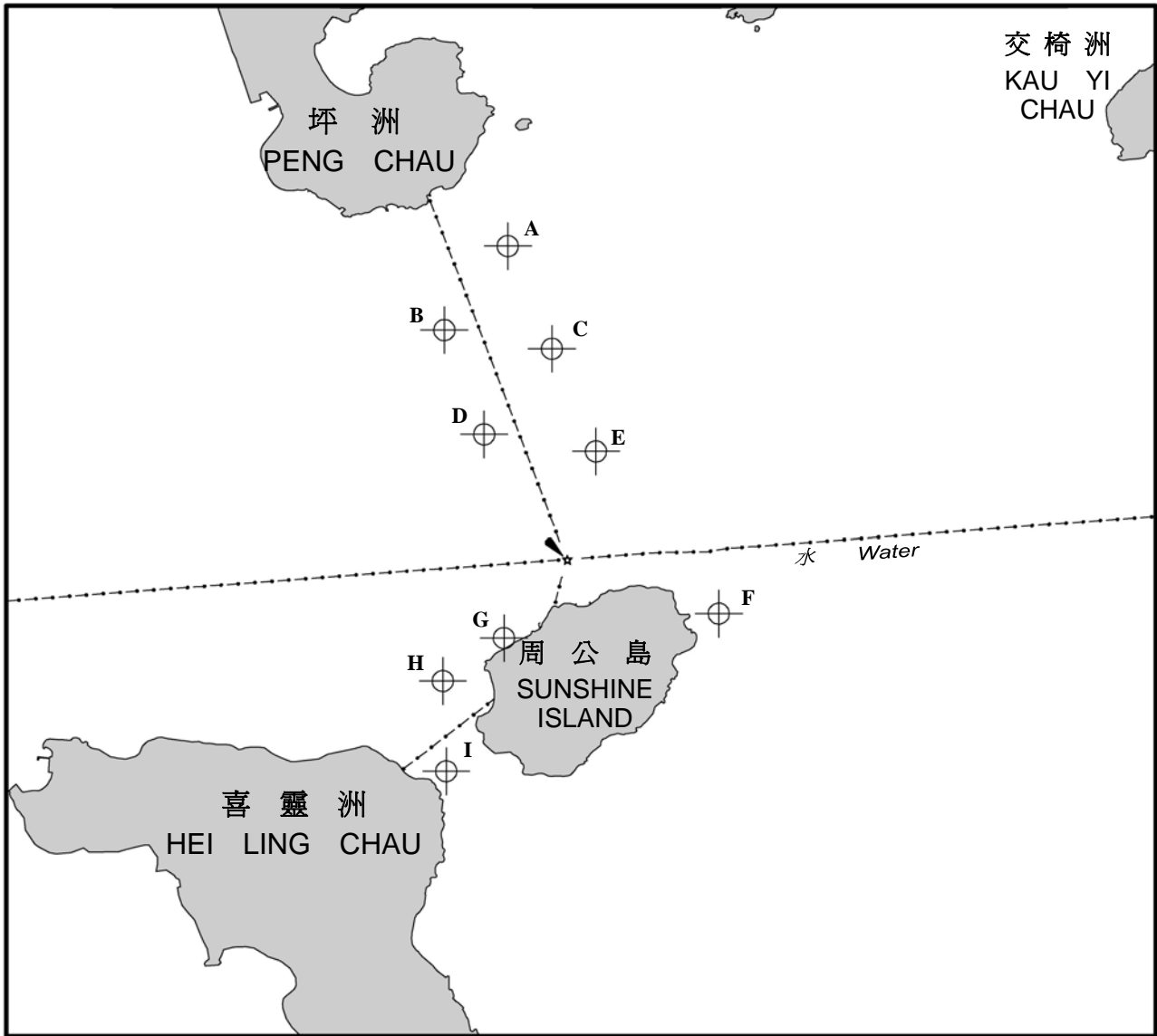
6. Vessels navigating in the vicinity should proceed with caution.
7. A drawing showing the works locations is attached to this Notice.

**H. P. LIU**  
**Director of Marine (Ag)**

Marine Department  
Government of the HKSAR  
Date : 20 August 2010  
Action File Ref. : L/M 94/10 in PA/S 909/12/32

海事處佈告 2010 年第 115 號附圖

Drawing Attached to Marine Department Notice No. 115 of 2010



不宜作航行用途

NOT TO BE USED FOR NAVIGATION